

Designing rural development interventions – management commitments

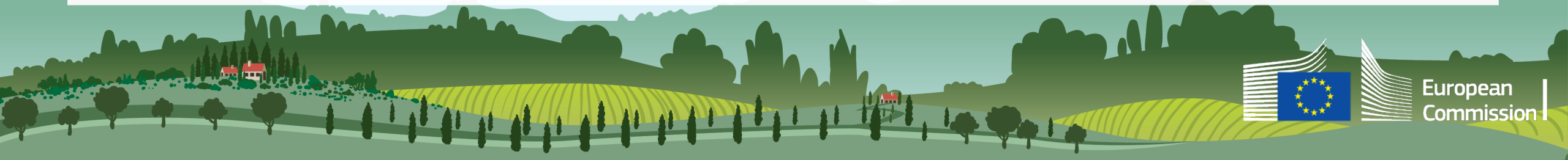
Article 65: Environmental, climate and other management commitments

ENRD webinar 25/11/20

This presentation is only intended to facilitate the work of the ENRD workshop. It has no interpretative value as regards the draft Regulations for the CAP post 2020.

Description of intervention – general features

- Definition of specific interventions within the “type of intervention” (art. 65), i.e. consistent package of types of operations, or a set of commitments, responding to same need & targeting same result(s)
- Generally these interventions are expected to belong to these categories:
 - *Agri-environment-climate commitments*
 - *Organic farming*
 - *Animal welfare*
 - *Forest-environment-climate services*
 - *Genetic resources*



Description of intervention – general features

➤ Description of the defined interventions

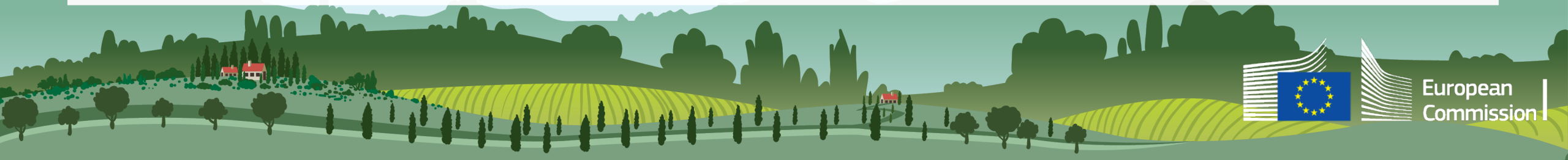
- *The level of details in describing commitments/requirements necessary for assessing their nature, ambition, potential to deliver on the corresponding specific objectives and targets*
- *Length of commitments (based on options provided by legal FW)*
 - > *for animal welfare commitments: at least 1 year*
- *Type of commitments (management based, result-based)*
 - > *example: Niedersachsen (DE) - fattening pigs (intact tails as indicator for pig welfare)*



Description of intervention – eligibilities

➤ Eligibility conditions

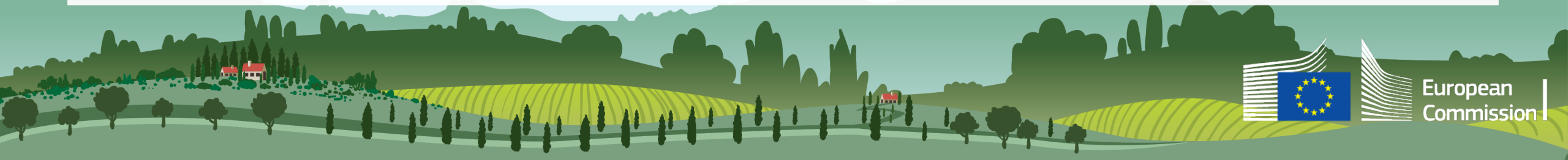
- *Beneficiaries: farmers (and other beneficiaries)*
- *Baseline & consistency with other CAP instruments*
 - *Identification of relevant baseline elements & explanation how commitment goes beyond mandatory requirements (for animal welfare: relevant minimum requirements for AW (SMRs, national legislation, “normal practices”))*
 - *not sufficient to refer to source of baseline’s rules or to reproduce entire content of national rules*
 - *good practice: demonstrate articulation betw. commitments & relevant baseline elements in a table*
- *Additional eligibility conditions set by MS in their CAP SP*



Description of intervention – support

➤ *Support*

- *Support rate: unit amount at level of each defined intervention or commitment, calculated based on income foregone & additional costs principle*
- *Unit amount can also include transaction costs*
- *Type of outputs: ha (for AEC interventions, organic farming and forest-environment-climate) & other units if justified for other interventions, such as LU for animal welfare*
- *Method of calculating support and certification of its adequacy & accuracy*



Description of intervention – other elements

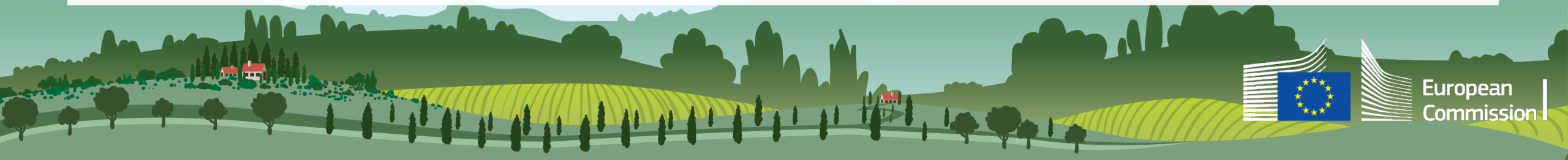
➤ Other elements of the description

- *WTO requirements: para 12 of Annex II (possibility to notify AW under other paragraph of Annex 2 if judged more suitable)*
- *Indicators:*
 - *annual planned outputs: one output indicator per each defined intervention, annual planned outputs broken down by unit amount (or more aggregated - as per Council position)*
 - *result indicators: link between indicator(s) and an entire intervention - or a type of operation within an intervention if different types contribute to different result indicators*



Points of attention

- If certain needs are identified and not addressed through the relevant categories of interventions - MS to explain how this need will be addressed outside the CAP SPs
- Integrated approach (combining various interventions) is particularly relevant for management commitments
 - > e.g. combining animal welfare commitments with other interventions such as training/advice, investments, etc.
- CAP evaluations, studies and ECA recommendations: important sources of information for designing interventions



Thank you
For your attention!

