



European Network for
Rural Development

Update on ENRD activity strands

Veronika Korcekova and David Lamb, ENRD Contact Point

Athlone, Ireland – 21 February 2019

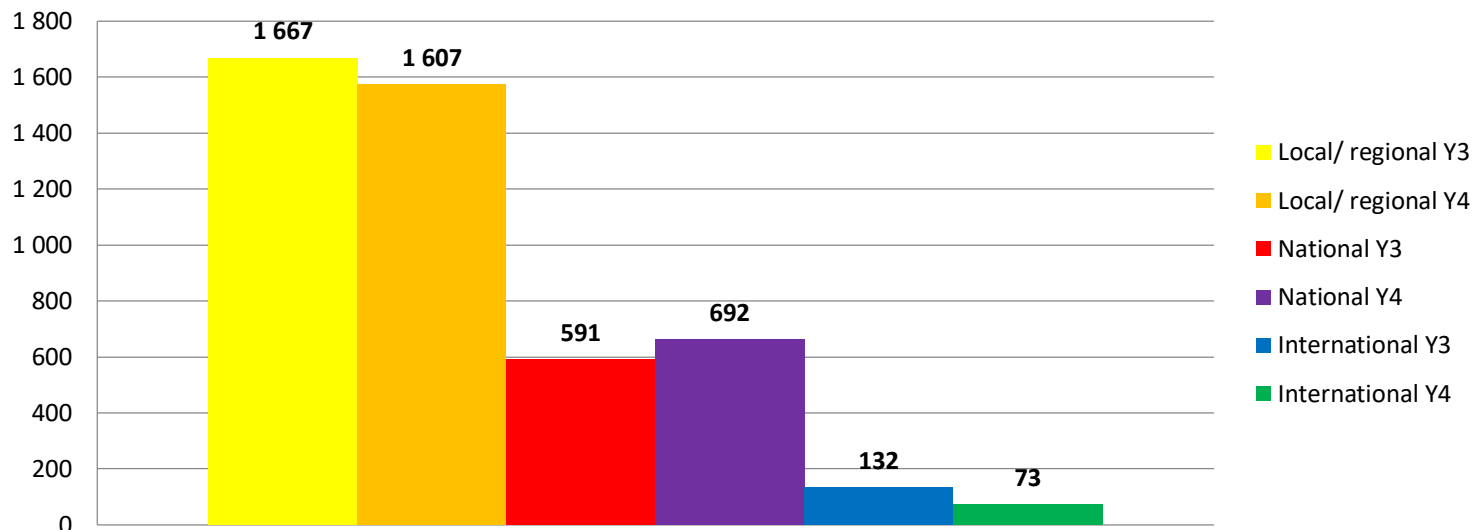
Content

- **Common Network Statistics**
- **Workshop on Project Examples and Good Practices – follow-up**
- **Updating the Website**
- **Rural Inspiration Awards**
- **RDP Analysis / Networking - Survey**
- **ENRD Communication Survey**

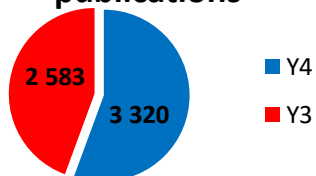
Common Network Statistics

2017 / Y4 Survey

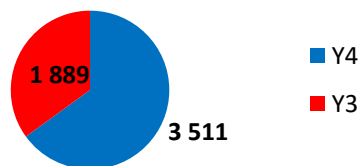
Number of events organised



Total number of publications



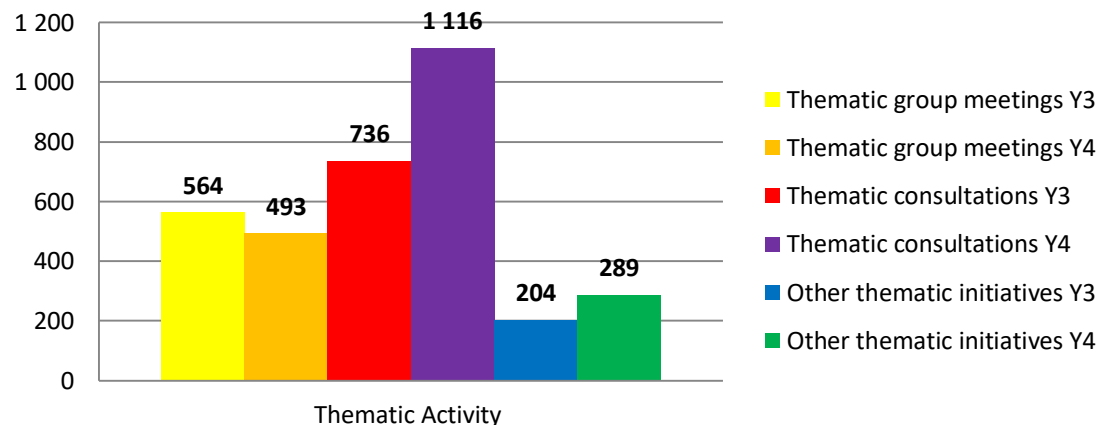
Number of GPs



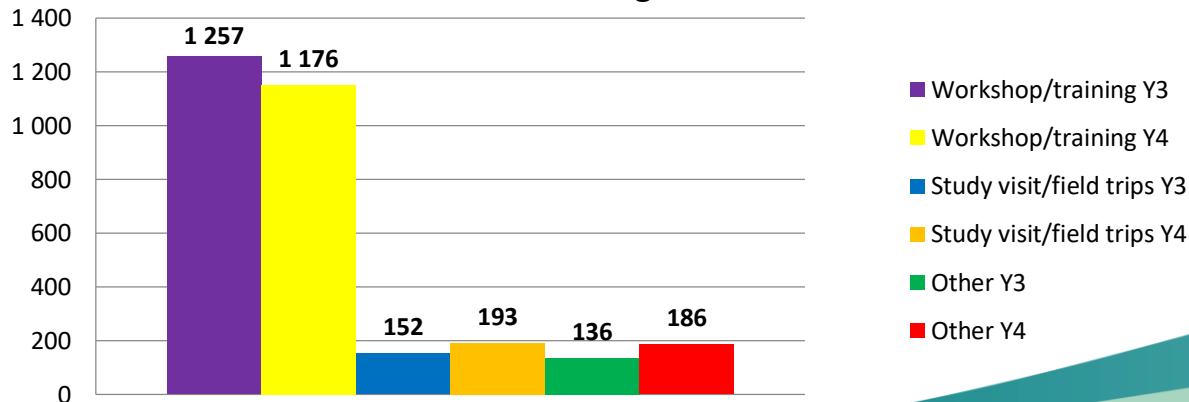
Common Network Statistics

2017 / Y4 Survey

Thematic activity by type



Number of training activities



Common Network Statistics

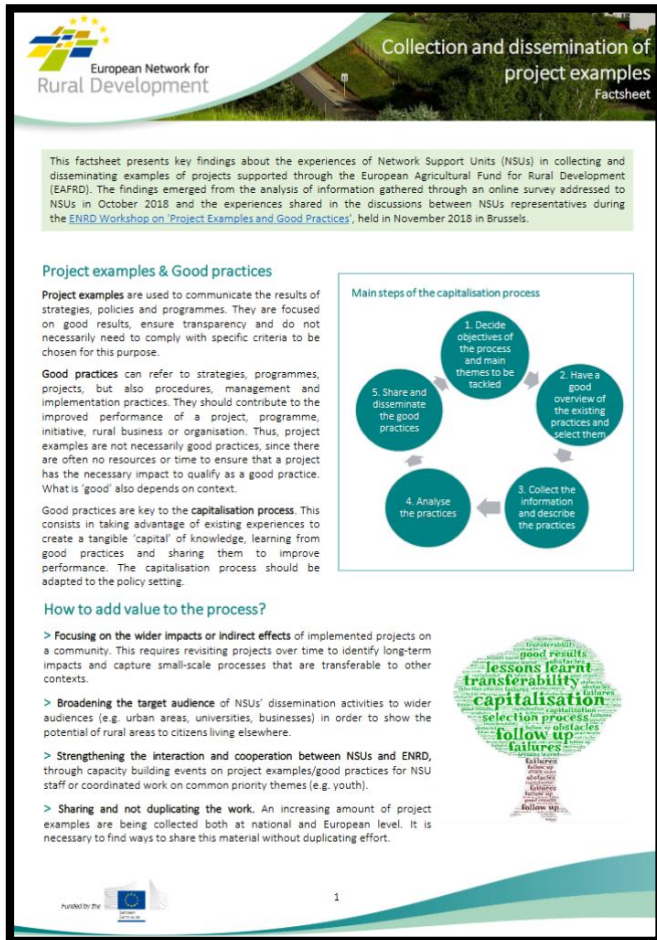
2018 / Y5 Survey

Process:

- Early March 2019 – data collection launched
- **15 June 2019** – deadline for data submission
- possibility to fill in online survey or excel file
- After completion, confirmation via email with a copy of the submitted responses

Thank you in advance for your cooperation 😊

Workshop on Project Examples and Good Practices Follow-up



- Capacity-building workshop for NSUs
- November 2018

- Outcomes available online:

www.enrd.eu > News & Event > Past events
> NRN Toolkit > NRN Tasks

Updating the Website

NRN Toolkit

- Adding in 'how to' guides based on the NRN Guidebook
- Creating new examples
- Updating the NRN Profiles and exploring new functionality

How to...?

Setting up the NRN

The text is based on the [NRN Guidebook](#) published on 2014 on the ENRD website.

The Network Support Unit (NSU) is the structure needed for running the NRN. It is responsible for animating the NRN and may be established either within the national/regional authority or outsourced to an external entity by tendering procedures. A "mixed NSU" is also possible, where both the national administration and a selected external entity cooperate to animate the network.

Planning NSU and NRN set-up parallel to the RDP planning

The NSU must be able to carry out the tasks described in the work plan during the whole programming period, and must have sufficient qualified staff. The development of the NSU and National Rural Networks (NRNs) should ideally be carried out in parallel with the development of the [Rural Development Regulation \(RDR\) No 1305/2013](#) so that the necessary planning has taken place well before the RDP is approved. This gives time to clarify the specific role of the NSU and plan its activities with input from stakeholders. It also helps to ensure that the NSU will be properly resourced and that adequate time is allocated to start to build the capacity of staff and network users. Furthermore, timely planning makes sure that the network is up and running, ready for when the RDP stakeholders need it the most. The NSU and its network are important elements in improving the efficient and effective delivery of the RDP.

Setting up a Network

Stakeholder involvement during the early stages of setting up the NSU and NRN is vital. Many Member States achieve this by establishing a co-ordination body such as a Working

176 entries

25 finalists

**1 winner per category – to be
revealed 11 April 2019**



**RURAL
INSPIRATION**

AWARDS



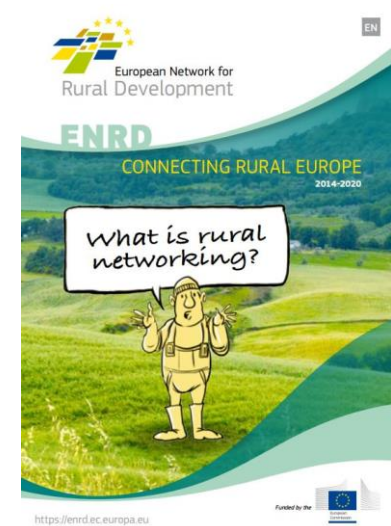
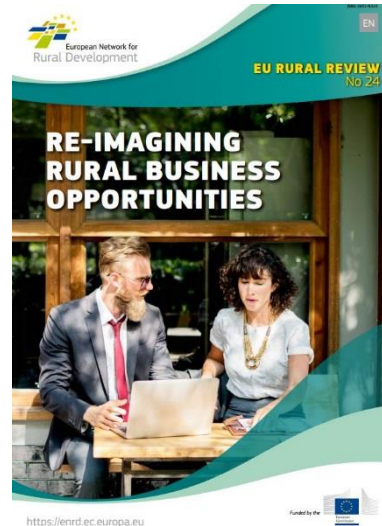
ENRD Communication Survey

Survey available online here:

bit.ly/2DfDxsv



ENRD Publications



Subscribe to ENRD publications online at:

<http://bit.ly/SubscribeENRD>

ENRD Contact Point

Rue de la Loi / Wetstraat, 38 (bte 4)

1040 Bruxelles/Brussel

BELGIQUE/BELGIË

Tel. +32 2 801 38 00

info@enrd.eu