



*Within the rural network we are creating an arena/venue, for mutual learning and cooperation to contribute to a sustainable development in Swedish rural and coastal areas.*

## NRN objectives

Objectives are described in the action plan for 2014-2020 in line with the mandatory NRN objectives.

- 

**Increase stakeholders participation** in the implementation of rural development and maritime - and fisheries development.
- 

**Improve the quality of the rural development programme**, the maritime and fisheries program and the program for community-led local development.
- 

**Inform the broader public and potential beneficiaries** on rural development and on maritime - and fisheries policies.
- 

**Promote innovation, mainly in agriculture, horticulture and in reindeer husbandry** through EIP-AGRI initiatives, but also widely used in forestry and rural areas, and in the maritime and fisheries sector.

## Membership

We are a **membership based network** and the members are representing various organisations and authorities which are important for the development of the activities and companies based in rural and coastal areas.

*The Rural Network is a platform to gather and engage rural actors*

*Who can join the network?*

We welcome all organisations and authorities working with, or interested in, rural development issues at a national level. Private persons and businesses working for profits cannot be members, but their organisations can. Added to that all LAGs and FLAGs are also members, though they do not operate at a national level.



To be a member the organisation **has to apply by using an application form** available at the website describing their fields of interests and competences, and also the level of involvement they foresee:

- ✓ **active member** willing to take part in thematic working groups and other activities
- ✓ **passive member** attending meetings and receiving information.

*How to become a member?*

The application is checked by the NSU, who then presents it to the Steering Committee with the additional information found about the applicant. The Steering Committee decides according to the rules if the applicant can be accepted or cannot. Sometimes additional information is requested by the Committee in order to be able to make a decision. There is no membership fee.

## NRN Governance



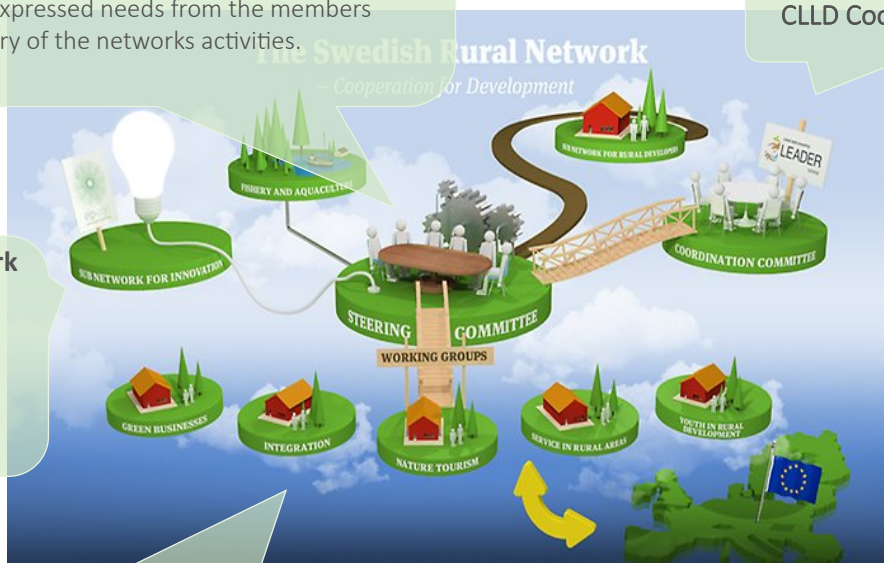
### Steering Committee

- **Elected and chaired by the Board of Agriculture (MA)**, which has the task to secure the functioning of the rural network.
- Consists of **15 representatives** from different key actors
- Discusses, sets priorities and approves the network action plan based on the expressed needs from the members
- **Monitors** the delivery of the networks activities.

### CLLD Coordination Group

### Innovation Network

- Supported by five thematic innovation advisors (20% employment) and one coordinator (full-time)



### Thematic Groups

- Group members can **receive payment** for their working hours at meetings and other gatherings of the thematic working group.
- **Actions agreed in the working group** and approved by the Steering Committee are funded by the NRN budget; however, the activities are implemented in cooperation between all the members of the working group.
- Thematic group regularly **reports to the Steering Committee** (including outputs & results)
- These **activities** are not regarded as separate projects but as a **part of the working plan** for the group.
- Currently **6 thematic working groups** are running

Sub-network for rural development officers in municipalities and regions

### Part of the ENRD

- Exchange experience & foster cooperation
- Network is often represented by member organisations
- Baltic Sea NRNs' meetings (twice a year)

## The NSU and RDP management

There is one national NSU, which is established within the MA:

- The NSU facilitates the learning and cooperation among the member organisations participating in the network activities;
- Administrators of the NSU coordinate events and conferences.
- Communication officers of the NSU work with the different channels of communication, also supporting the thematic working groups in implementing their communication plans.
- Coordinators act as secretaries to the thematic working groups and the sub networks, as well as give technical service to get the activities running. The network support unit is led by a manager.

### The NSU and the Managing Authority

- The Managing Authority has a **chairmanship in the NRN Steering Committee**.
- The **staff** of the NSU are **employed by the MA**.
- **All costs** for the NRN are approved by the manager of the EAFRD and EMMF programme units at the MA

### The NSU and the Monitoring Committee

There are **NSU** representatives in the three Monitoring Committees (MC):

- The EARDF MC,
- The EMFF MC
- The MC for the CLLD programme funded jointly by ERF and ESF

## Communication

The Swedish Rural Network is a **member-based network**, and as such much relies on members when it comes to disseminating the results. Together with members the network is launching twitter campaigns, members are guest administrators on Instagram, participate in podcast and take an active part in the development of the newsletter etc.

The network has a **communication strategy** for the period 2014-2020, setting out the framework for the communication work and its aims. The strategy concerns the Swedish Rural Development Programme, the Swedish Maritime and Fisheries Programme and the Swedish Programme for the Regional and Social Fund within CLLD. The strategy will be revised on a continuous basis.

There is also a **two-year communication plan** (the current one running for 2015 and 2016) established by the Steering Committee. It sets out more in detail what the network should focus on during these years and how it should be done.



Our main channel of communication is our **website**. It has been recently updated with a new appearance and content. The new website is now more explanatory towards people who do not know what we are doing or what our task is.

## Timeline of NRN Workplans

### 1st period

1 Jan 2014 – 31 Dec 2015

### 2nd period

1 Jan 2015 – 31 Dec 2016

### 3rd period

to be confirmed...

...



## NRN self-assessment



- 1. Intervention logic for focus areas** (described in the Activity plan):
  - ✓ needs that should be addressed by the network
  - ✓ **changes** we want to achieve in terms of specific objectives and expected results
  - ✓ estimated **contribution to the overall objectives**.
- 2. Intervention logic of thematic working groups** (elaborated in their workplans):
  - ✓ **Operational objectives** are determined
  - ✓ **Activities** are described
  - ✓ **Outputs** are listed
  - ✓ **Results assessment** is described



The actual **outputs are reported once a year**, using the indicators suggested by the ENRD and some additional indicators developed by the Swedish Network Support Unit.

The **results are assessed continuously** and will be used in the planning process for the thematic working groups as well as the steering group. The assessment of results will also be an input to the external evaluation of the network.

## NRN Resources

Financial resources (2014-2020)	Budget
Total NRN public funds:	70.000.000 Skr
Out of which national co-financing:	42.000.000 Skr
Out of which EAFRD:	28.000.000 Skr
2014:	4.800.000 Skr
2015:	9.300.000 Skr
2016:	12.200.000 Skr
2017:	10.500.000 Skr
2018:	10.500.000 Skr
2019:	10.500.000 Skr
2020:	10.500.000 Skr
2021:	1.700.000 Skr

Human resources (NSU)	No
Number of full-time equivalent (FTE) staff	7.3



Main contacts 	Function	Contact Person	Email
<b>Address:</b> Landsbygdsnätverkets kansli, c/o Jordbruksverket, 551 82 Jönköping, Sweden  <b>Phone number:</b> + 46 36 15 50 00  <b>Website:</b> <a href="http://www.landsbygdsnatverket.se">www.landsbygdsnatverket.se</a>  <b>General e-mail:</b> <a href="mailto:landsbygdsnatverket@jordbruksverket.se">landsbygdsnatverket@jordbruksverket.se</a>	Main contact/ TNC & youth activities	Hans-Olof Stålgren	<a href="mailto:hans-olof.stalgren@jordbrukverket.se">hans-olof.stalgren@jordbrukverket.se</a>
	NSU manager	Maria Gustafsson	<a href="mailto:Maria.Gustafsson@jordbruksverket.se">Maria.Gustafsson@jordbruksverket.se</a>
	Communication	Tommy Nilsson	<a href="mailto:Tommy.Nilsson@jordbruksverket.se">Tommy.Nilsson@jordbruksverket.se</a>
	Innovation/ EIP	Inger Pehrson	<a href="mailto:Inger.Pehrsson@jordbruksverket.se">Inger.Pehrsson@jordbruksverket.se</a>
	LEADER/CLLD & Nature tourism	Beata Allen	<a href="mailto:Beata.Allen@jordbruksverket.se">Beata.Allen@jordbruksverket.se</a>
	NRN self-assessment/ Evaluation	Maria Gustafsson Karin Hjerpe	<a href="mailto:Maria.Gustafsson@jordbruksverket.se">Maria.Gustafsson@jordbruksverket.se</a> <a href="mailto:Karin.Hjerpe@jordbruksverket.se">Karin.Hjerpe@jordbruksverket.se</a>
	Area based businesses & social inclusion of refugees	Nils Lagerroth	<a href="mailto:Nils.Lagerroth@jordbruksverket.se">Nils.Lagerroth@jordbruksverket.se</a>
	Service in rural areas, Fisheries and Aquaculture	Magnus Nordgren	<a href="mailto:Mangus.Nordgren@jordbruksverket.se">Mangus.Nordgren@jordbruksverket.se</a>