



*“NATIONAL RURAL NETWORK
CONNECTING THE RURAL IN PORTUGAL
AND IN EUROPE”*

NRN objectives

The Portuguese Rural Network has defined **four main objectives** in line with the mandatory objectives specified in the EU Regulation.

In order to achieve the strategic objectives, the actions and activities developed within the framework of the NRN are structured in **4 Areas of Intervention**.

4 intervention areas –

Supported by the Technical Assistance of the RDP

1. Running of the NSU;
2. Dissemination and information in order to implement the RDP;
3. Dissemination of information and facilitation of processes to monitoring and evaluation of RD policies;
4. Observation on agriculture and territories.

- ➔ To increase the **involvement of stakeholders** in the implementation of rural development.
- ➔ To improve the **quality of the RDP** implementation
- ➔ To **inform** the broader public and potential beneficiaries on rural development policy and funding opportunities
- ➔ To foster **innovation** in agriculture, food production, forestry and rural areas

3 Operational objectives:

1. To promote networking
2. To support the LEADER / DLBC approach and Innovation
3. To promote the sharing and dissemination of information



[Click here for the Action Plan of Portuguese NRN 2014-2020 \(PT\)](#)



The NRN is not a Measure it is part of the Technical Assistance of the RDP.

Regional NRN Structure

- ✓ In addition to the national NSU, there are **7 regional antennas** (one for each Regional Directorate of Agriculture and Fisheries: 5 in the mainland and 2 in the autonomous regions of Azores and Madeira).
- ✓ There are **regular meetings** between the central NSU and the regional antenna in order to prepare, monitor and evaluate NRN activities.

Membership

The Portuguese NRN is **open** to everyone. In order to apply to the operational group initiatives organisations have to become members of the NRN.

Who can join the network?

How to become a member?

There is **no formal application** process to become a member.

The members of the Portuguese NRN come from **different stakeholder groups**:

- ✓ Central administration-2,9%
- ✓ Regional administration- 0,8%
- ✓ Private associations and foundations- 32,2%
- ✓ Education and R&D – 3%
- ✓ SME and natural persons – 36,8%
- ✓ Other enterprises – 14,7%
- ✓ LAG and other organized territories – 9,7%

Who the members are?

How to get involved?

The involvement of all NRN members (including those at regional level) is highly important for the Portuguese NRN. This involvement has been ensured through the organisation of **meetings** to identify territorial needs.

The Portuguese NRN will allow members implementing **projects**.

The NSU and RDP management

The NSU and the Managing Authority

- ✓ The Network Support Unit operates within the Directorate General of Agriculture and Rural Development (Ministry of Agriculture);
- ✓ The NRN Coordinator, nominated by the DGADR (Directorate General of Agriculture and Rural development) is in charge of the presentation of NRN actions and activity plans to the MA for approval.
- ✓ The NSU communicates regularly with the MA, and the action and activity plans are discussed and approved by the 3 Mas, which are Mainland (PDR2020); Azores (PRORURAL +); Madeira (PRODERAM 2020).
- ✓ Meetings under the thematic of evaluation: there is a Monitoring and Evaluation Network of PT2020 composed by several entities, among them the National Coordination Commission of the EAFRD (CCN FEADER). There is also a National Group of Coordination, the monitoring and evaluation group (NSU belongs to this one) that provides information to the CCN FEADER.
- ✓ The Portuguese NRN coordinates meetings and ensures an information exchange with the MA on a series of rural development topics that are essential to the functioning of the NRN and the cooperation with the ENRD.
- ✓ The NSU and the MA organise common activities (e.g. training/capacity building activities to the LAGs) and prepare jointly the public calls for NRN projects.

The NSU and the Monitoring Committee

- ✓ The NRN coordinator represents the network in the various monitoring committees of the RDPs.

NRN Governance



The National Support Unit (NSU) has a central team of 8 staff and 1 person per regional antenna (7)

NRN Coordinator

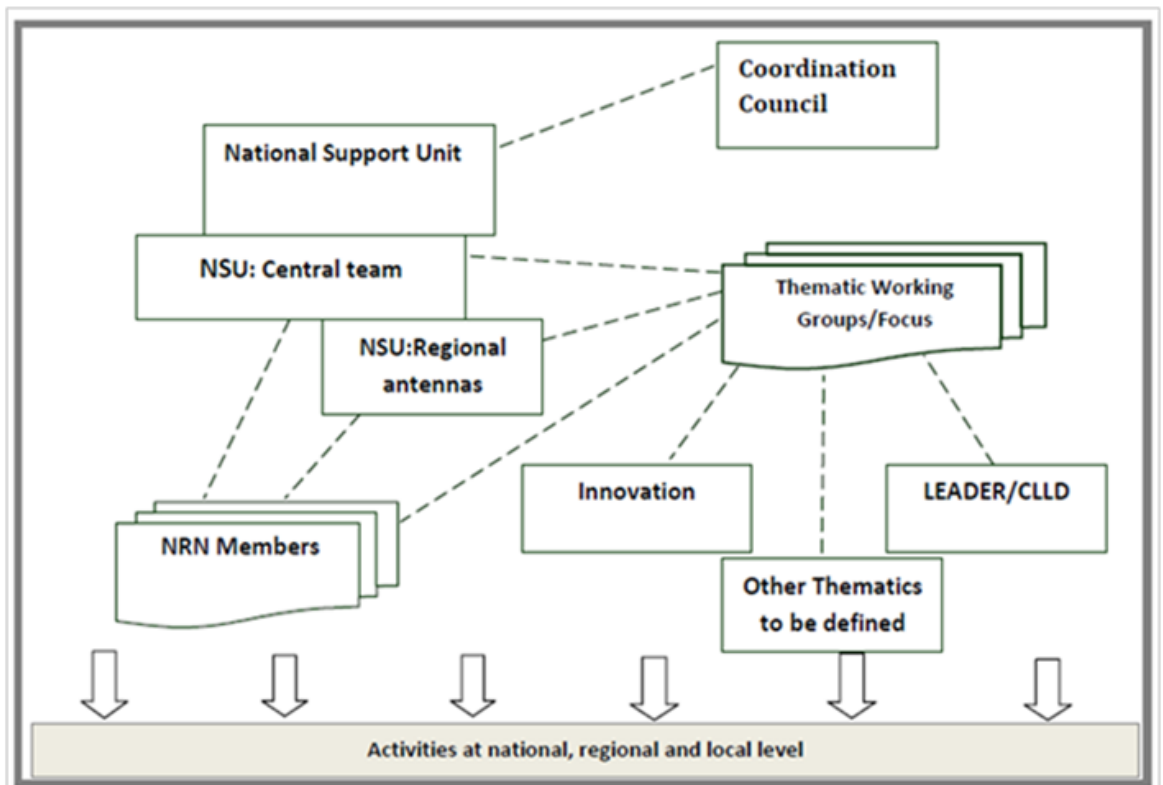


- The NRN Coordinator (nominated by DGADR - Directorate General of Agriculture and Rural Development):
- ✓ promotes the elaboration of the NRN action and activity plans (and presents these to the MA for approval).
 - ✓ represents the network in the various monitoring committees of the RDPs.
 - ✓ ensures representation of the NRN in activities from ENRD, EIP-AGRI, Evaluation Helpdesk and other networks from different MS.

Coordination Council (CC)



- ✓ The CC is a body that contributes to the definition of the structural priorities of the NRN action plan and monitors the implementation of the action plan (in particular through plans and activity reports), in accordance with the European and national guidelines for the Portuguese NRN.
- ✓ The (CC) is comprised of the President of the National Coordination Commission of EAFRD – Department of Planning and Policies; the coordinator of the NRN; 1 representative of each MA; 1 representative of the payment agency.
- ✓ The CC meets once a year.



Communication

The general communication objectives are:

1. To **inform** the public and the beneficiaries of the RDPs;
2. To **promote** rural development policy;
3. To **involve** rural development actors.


The Portuguese NRN will use the following communication tools:



Website: e-mails and personal contacts




Publications and Newsletter



Films and audiovisuals



Social Media



Events and meetings

 [Cfr. page 13 of the NRN Action Plan \(PT\)](#)

NRN Self-assessment



The PT NRN has developed an evaluation guide (see attachment below) and 18 tools that enable gathering the necessary information to feed in the indicators (common and specific ones).



An annual evaluation report will be produced and discussed with the members of the NRN to determine their level of satisfaction with the work carried out the network.

 [Click here for the NRN Evaluation Guide \(PT\)](#)

Timeline of NRN Workplans

1st period

01 Aug 2015 – 31 Dec 2016

2nd period

1 Jan 2017 – 31 Dec 2018

3rd period

01 Jan 2019 – 31 Dec 2018

4th period



01 Jan 2019 – 31 Dec 2022

NRN Resources

Financial resources (2014-2020)	Budget (€)
Total NRN public funds:	12 266 404
Out of which national co-financing:	85%
Out of which EAFRD:	15%

Human resources (NSU)	No
Number of full-time equivalent (FTE) staff	6.2



Main contacts 	Function	Contact Person 	Email
Address: Av. Afonso Costa, n.º 3, 7.º. 1949-002 Lisboa Phone number: 00351218442410 Website: www.rederural.pt General e-mail: rederuralnacional@dgadr.pt	Other function (NRN Coordinator)	Maria Custódia Correia	mccorreia@dgadr.pt ; rederuralnacional@dgadr.pt
	Communication	Paula Rocha	procha@dgadr.pt ; rederuralnacional@dgadr.pt
	LEADER/CLLD (representative in the subgroup LEADER/CLLD)	Ana Pires da Silva	anasilva@dgadr.pt ; rederuralnacional@dgadr.pt
	Innovation/EIP (representative in the subgroup Innovation)	Maria de S. Luís Centeno	mcenteno@dgadr.pt ; rederuralnacional@dgadr.pt
	NRN self-assessment/evaluation	Maria Custódia Correia Ana Pires da Silva	rederuralnacional@dgadr.pt