

The word "LEADER" is written in white, bold, uppercase letters inside a green arrow-shaped graphic pointing to the right. The background of the slide features a gradient from green to blue with abstract circular patterns.

LEADER

Planning for future **LEADER** in Finland

Leader/CLLD subgroup meeting 4th February 2020

Laura Jänis, Ministry of Agriculture and Forestry

Juha-Matti Markkola, National Rural Network

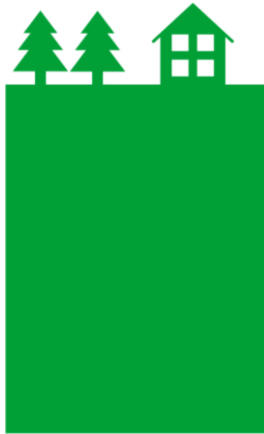


LEADER in Finland 2014-2020

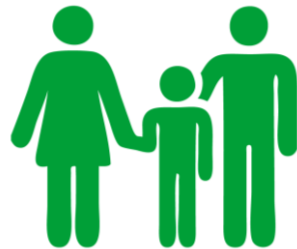


54 rural LAGs
+ 1 in Åland

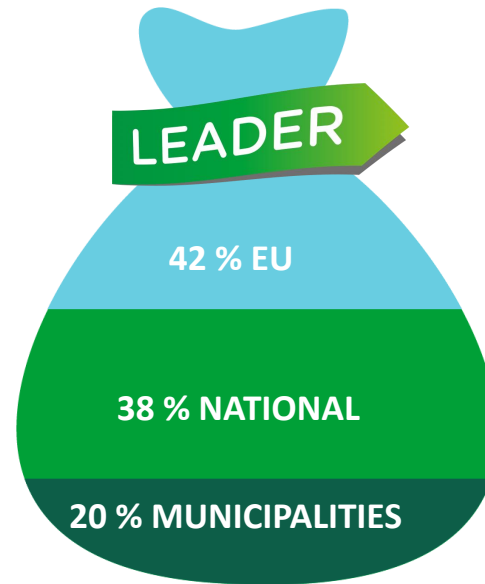
100 %



of rural population



14 000-123 000 inhabitants,
average 50 000



Total public funding
300 M€



Per LAG 3-11 M€

A photograph of three brown bear cubs standing in a forest. The cubs are positioned on the left, center, and right sides of the frame. They are surrounded by green foliage and a birch tree trunk is visible in the background. The text '3 main points' is overlaid in the center of the image.

3 main points

Leader Project: Wild Life Safaris Finland



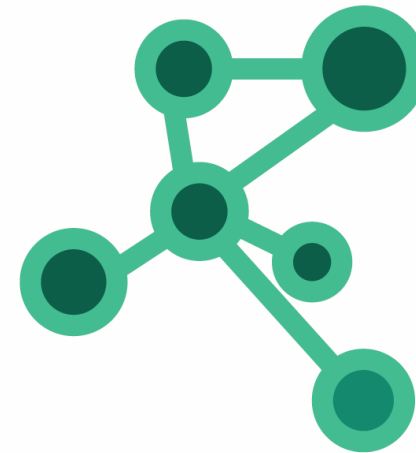
Key elements from 2014-2020



1 LAGs cover all of Finland



2 Work of LAGs covers all aspects of rural life

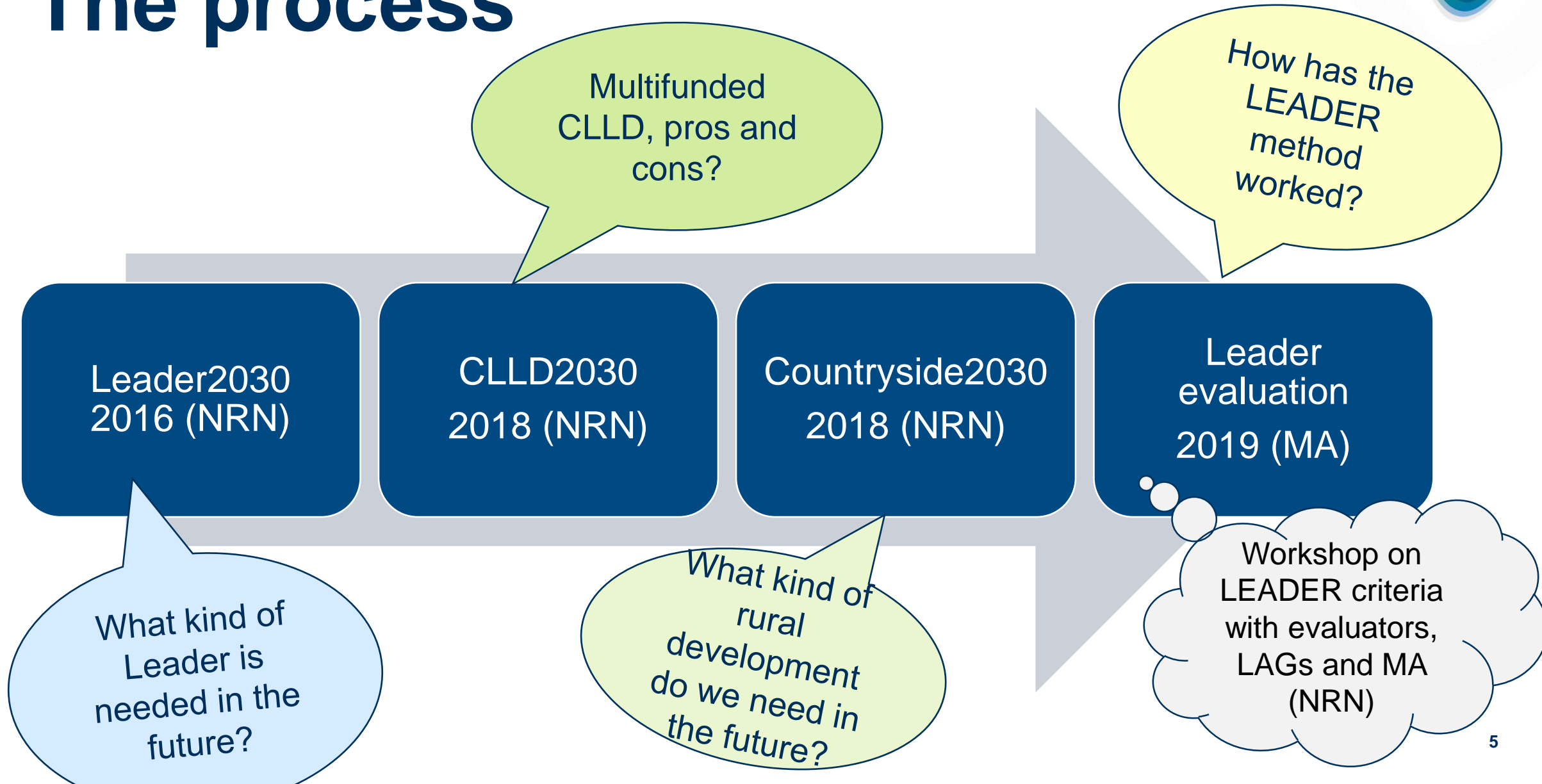


3 Networking

- LAG as a platform, hub
- Peer-to-peer support btw LAGs
- International and regional cooperation
- Vertical network of LAGs, regional & national administration

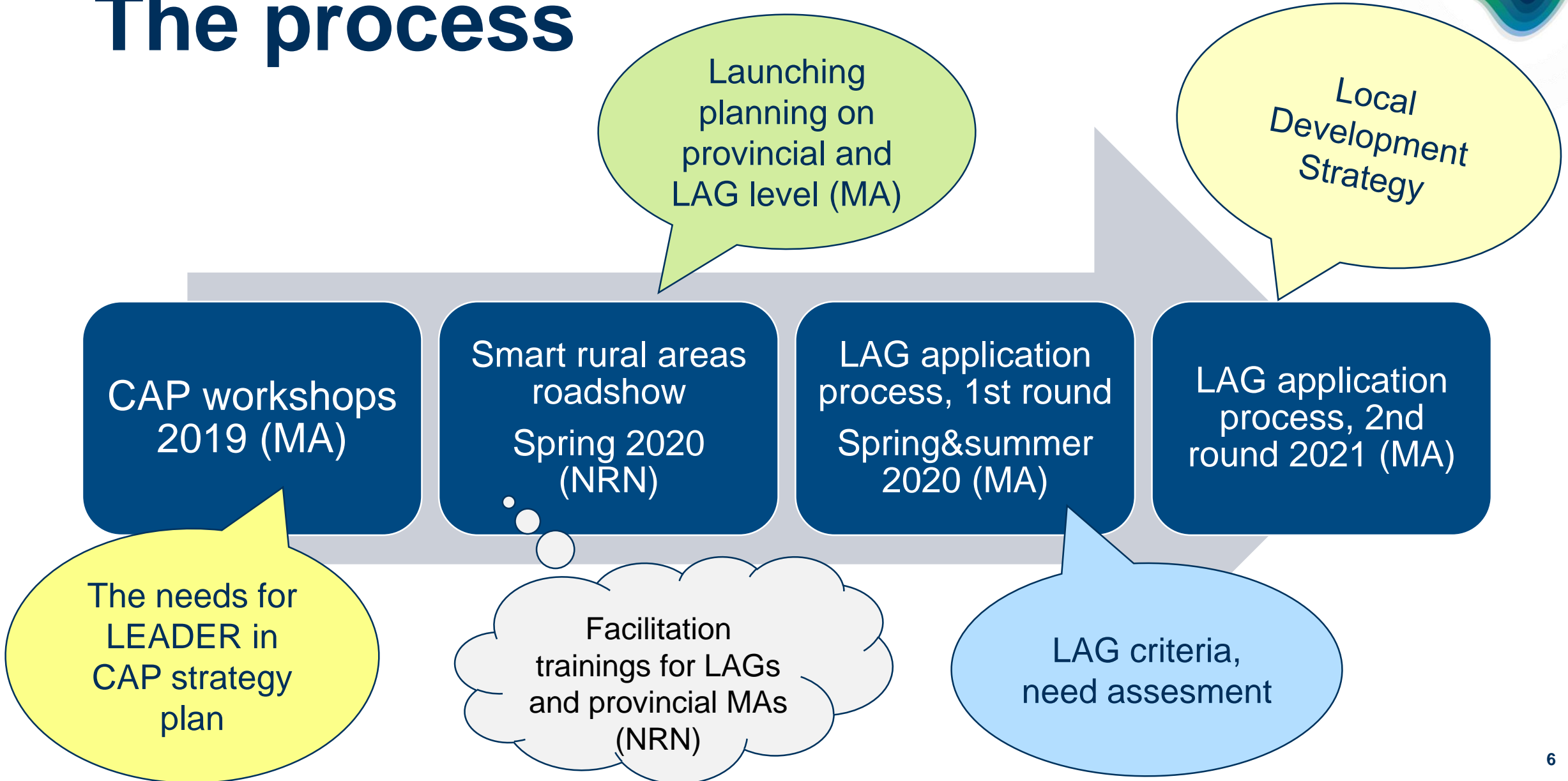


The process





The process



The main strategic themes and policy choices for the future LEADER



- How to ensure LEADER in all of Finland, if there will be less funding?
 - Reducing the number of LAGs? Possibilities of larger LAG areas, merging LAGs?
 - More funding from somewhere else?
- Result orientated approach: quality of the strategy and implementation as a basis for LAG budget
- Strengthening the networking and innovation -principles
 - Dynamic network analysis: what's the role of the LAG in the area and how to strengthen it?
- Simplification, the use of SCO
 - New running cost model: benchmarking the Polish flatrate/lumpsum approach
 - Theme project 2.0: benchmarking the Austrian umbrella project
- What could be the role of LEADER in
 - Environmental and climate issues
 - Developing agriculture
 - Smart Villages



Next steps

- Smart Rural Areas - roadshow 15 regional CAP27 seminars, spring 2020
- 1st round of applications 2020
 - Defining the LAG area; possible mergers
 - Description of LAGs administration and know-how
 - Dynamic network analysis
 - SWOT of the area
 - Plan how to build the strategy and participate the whole area
- 2nd round of applications 2021
 - Local Development Strategies
 - Final applications
- Multifunding
 - ESF+ & ERDF won't apply CLLD
 - EMFF still in process: how to strengthen CLLD and co-operation with rural LAGs



Thank you!



For ideas on a human scale!

laura.janis@mmm.fi

juha-matti.markkola@maaseutu.fi