

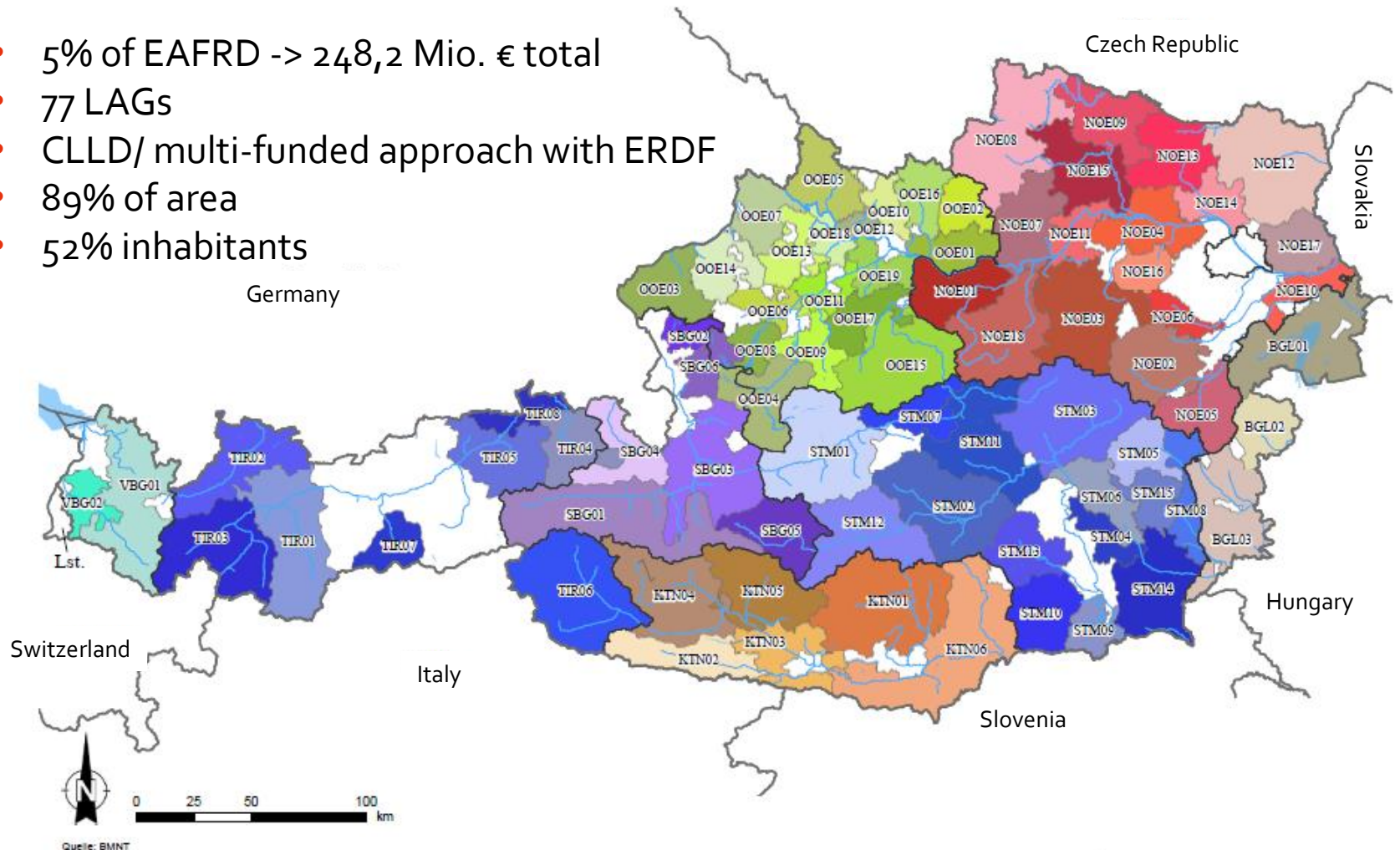
LEADER in CAP-Strategic Plan - Austria

ENRD Subgroup LEADER

Christa Rockenbauer-Peirl
BMLRT, V/6, Innovation, Local Development and
Cooperation
Brussels, 04. February 2020

Austrian Programme for Rural Development 2014 – 2020

- 5% of EAFRD -> 248,2 Mio. € total
- 77 LAGs
- CLLD/ multi-funded approach with ERDF
- 89% of area
- 52% inhabitants



Experiences – what worked well

Diversity in LAG Boards:

- **49/50% rule** Reg. 1303/13 (public or interest group)
 - maintenance of definition
- Minimum of **one third women** in selection board (national rule)
 - extension
- Evaluation study “LEADER and social Innovation”: diversity in boards promotes social innovation
- Evaluation study on Gender Equality in RDP: quota in LEADER selection board works

Experiences – what worked well

- **Communication and cooperation** in administrative and strategic questions:
 - regular meetings (app. 4 / year) with Managing Authority, Paying Agency, Provinces, LEADER-Forum, sometimes NRN
 - Inclusion of LAGs (LEADER-Forum) proved to be very helpful, immediate feedback from experience in the regions
 - better decisions and less complications
 - no change planned

Experiences – what worked well

- **Strengthening of bottom up**
 - Clear definition of LAG`s tasks and competences
 - No changes planned
- **Professional management**
 - at least 60h /week full time equivalent employed at the LAG
 - Maybe a bit more flexibility (LAG-Size)
- **Multi-Fund Approach – CLLD (with ERDF) in parts of Austria**
 - Extension to other areas? ESF?

Thematic structure in LDS 14-20 – View to GSP

- **Create Added value**
 - Agriculture, forestry, tourism, SME, ..
- **Natural resources and cultural heritage**
 - Nature and ecosystems
 - Culture and craftsmanship
- **Common welfare**
 - Basic services, local supply
 - local learning, participation, inclusion



- Adaptation and extension: **topic climate/ energy/ sustainability**
- We want a higher strategic focus in future LDS!

Strategic points for LEADER future

- **Higher strategic focus** in LDS, more focus on projects with added value for the whole region?
- **Inclusion** of some **small measures** like village renewal?
- **Governance**: Coherence of strategies (EU/ national/ regional)
- **Smart Villages**
- Extension of **simplified cost options**:
 - Use of lump sums calculated by draft budgets
 - Off-the-shelf SCOs: max 40% flat rate of direct staff costs for LAG-management

Planning and consultation process

- Embedded in the overall **process of GSP programming**
- **Expert groups:** LEADER is in the “non agricultural project measures”
 - MA, Paying Agency, Provinces, LEADER Forum, Chambers, ..
 - Inputs to SWOT and needs assessments
 - Preparation of a complete LEADER intervention:
 - Strategic decisions: CLLD, LDS selection, size, area, topics ...
 - Administrative rules: eligibility, SCOs, ...
 - New delivery model: milestones, targets, indicators, unit amount
- Several **stakeholder meetings** for broader public consultation
- **Time line:** final version of GSP for submission planned at end of 2020

Together for attractive rural areas!



Christa Rockenbauer-Peirl
BMNT, V/6
Christa.Rockenbauer@bmnt.gv.at