



## European Rural Networks' Assembly

# Update on Rural Networking support and activities : ENRD Evaluation Helpdesk

Hannes WIMMER, Team Leader

8th Meeting of the European Rural Networks' Assembly  
Brussels, 7 December 2021



POWERED BY



# Content



Yearly capacity building events

Better data for evaluating the CAP

SFC for the ex-post of RDPs 2014-2022

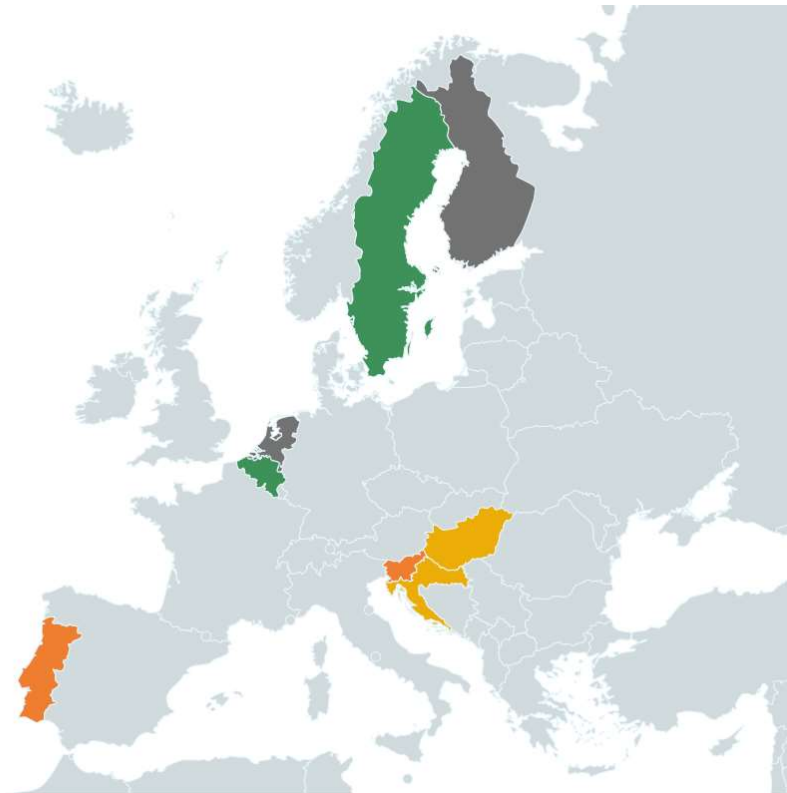
Publications

Outlook to 2022



## Yearly Capacity Building events (Sep. – Nov.)

### *Peer-learning events*



### **General EvaluationWORKS! topics:**

- Evaluation plans: experiences and outlook to the future
- Better data for evaluating the CAP
- How to deal with a changing context in monitoring and evaluation?

### **Peer learning events:**

- Best use of FADN for evaluation (PT-SI)
- Planning data management for evaluation: focus on environmental indicators/impacts: (HR-HU and BE Flanders-SE)
- Planning data management for evaluation: focus on data quality (FI-NL)

# TWG-9: Better data for evaluating the CAP



European Commission > ENRD Home > Evaluation > Evaluation Knowledge Bank

Home

- About the ENRD
- Policy in Action
- Projects & Practice
- ENRD Thematic Work
- LEADER / CLLD
- Networking
- Evaluation
- News & Events
- Publications
- Contact

Search ENRD

### Evaluation Knowledge Bank

The purpose of the Knowledge Bank is to provide insights into various outputs developed in initiatives and projects at the EU and Member States levels concerning data infrastructures and data use. Furthermore, it proposes a quick guide on potential use, showing how these outputs could be used for monitoring and evaluation of the CAP. You can send new project info and feedback to [info@ruralevaluation.eu](mailto:info@ruralevaluation.eu).

Free-text search in the Evaluation Knowledge Bank

Total results: 57

#### DiverIMPACTS

A database of diversification impacts from European field experiments

The database records a wide range of expected impacts stemming from 10 diversification field experiments carried out throughout an array of diverse physical and economic environments in Europe.

#### Methodology for mapping the distribution of small farms in Europe

This product classifies the European regions according to the presence and distribution of small farms. For selected regions, it applies a novel approach for estimating the distribution of small farms.

Log in | Share

#### Projects

- DEMETER 1
- DESIRA 2
- DIANA 3
- DIONE 4
- DiverIMPACTS 1

Show more

#### Relevant CAP Objectives

- 1. Ensure fair income 16
- Increase competitiveness 9
- Rebalance power in food chain 9
- 4. Climate change action 39
- 5. Environmental care 39

Show more

#### Data Collection Systems Used

- Ad-hoc data collection 20
- Copernicus 31
- ESPN database 2
- Eurostat 17
- FADN(FSDN) 9

Show more

<https://enrd.ec.europa.eu/evaluation/knowledge-bank>

TOOLS

- Project Database
- Evaluation Knowledge Bank
- Share your Rural Story
- LEADER Partner Search
- LEADER Resources



**Contains** innovative data-collection /processing initiatives and projects

**Categorizes** relevant outputs

**Explores** potential use for CAP monitoring and evaluation

→ **Further developed** through Taskforces / workshops in Oct/Nov. 4



# Publications



## Report

A journey through evaluation plans: Learning from past experiences for the future CAP. Good Practice Workshop 28-29 June 2021

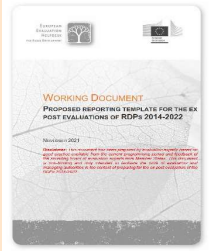
Download [here](#)



## Report

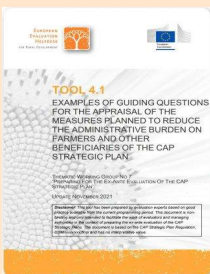
New tools for monitoring and evaluation: insights from the Evaluation Knowledge Bank. Good Practice Workshop 20-21 October 2021

Download [here](#)



## Working document

SFC template for ex-post of RDPs 2014-2022 (collaboratively developed with stakeholders )



## Tool 4.1

Examples of guiding questions for the appraisal of the measures planned to reduce the administrative burden on farmers and other beneficiaries of the CAP Strategic Plan.

Download [here](#)

# Publications



## Factsheet

The Information System of the Rural Support Service in Latvia: A Unified Data Portal for Evaluation

Download [here](#)



## Factsheet

Building the Evaluation Culture in Tuscany - Local Level LEADER Evaluation Support for LAGs

Download [here](#)

upcoming

## Factsheet

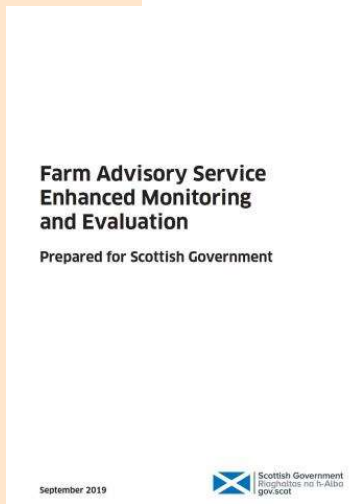
Assessing secondary effects of measure 13 on agricultural farms supported under the Focus Area 2A in Slovakia

upcoming

## Summary Report

Assessment of the progress in implementing the evaluation plans of RDPs 2014-2022.

# Publications



More than 200  
Member States'  
evaluations online!



Check [https://enrd.ec.europa.eu/evaluation/publications\\_en](https://enrd.ec.europa.eu/evaluation/publications_en)

# Outlook to 2022



Annual Work Programme 2022 currently under preparation.

## Main objectives:

- Methodological support to MS on monitoring and evaluation (M&E) related activities, with focus on performance framework for CAP 2023-27 (e.g. Evaluation Plans)
- Collecting, developing and sharing information on M&E
- Thematic analysis, summaries and mapping on the CAP performance
- Capacity building activities, including peer learning events
- Supporting the communication of M&E related activities
- Supporting networking activities and exchange of good practices
- Performing ad-hoc M&E related activities





# Thank You

DO YOU HAVE ANY QUESTIONS?

European Evaluation Helpdesk for Rural Development

Boulevard Saint Michel 77-79

B-1040 Brussels

Tel. +32 2 7375130

E-mail [info@ruralevaluation.eu](mailto:info@ruralevaluation.eu)

<http://enrd.ec.europa.eu/evaluation>