



# European Evaluation Helpdesk for the CAP

European Rural Networks' Assembly

7 December 2021

Olivier Chartier

# Introduction to the Consortium

## Ecorys




Large company (more than 500 employees) with substantial experience and capacity in the **evaluation of cross-thematic CAP issues**, technical assistance and integrated communications services

## Metis

Running the **Evaluation Helpdesk since 2002**

## Agrosynergie (Oréade-Brèche and Cogea)

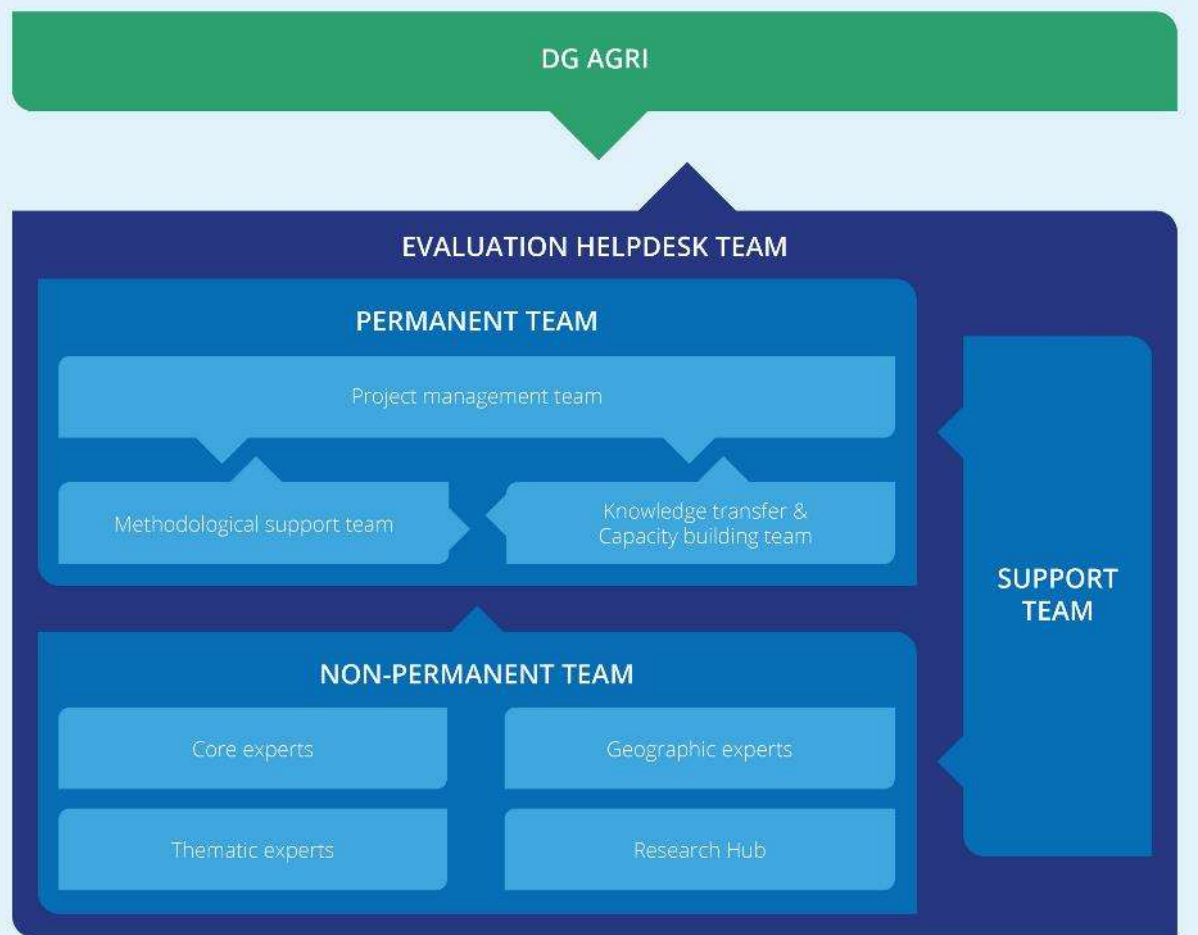
More than **40 CAP evaluations in the last 20 years**, specialising in evaluations related to the first and second general CAP objectives.

		
<p>Holistic evaluation competencies covering all CAP objectives and instruments from both EAGF and EAFRD CAP funds.</p>	<p>Track record and know-how stemming from its leader role of the ongoing "European Evaluation Helpdesk for rural development".</p>	<p>Track record and know-how stemming from its leader role of the ongoing "Framework contract for the evaluation of CAP measures contributing to the general objective of viable food production".</p>
<p>Track record and know-how stemming from its leader role of the ongoing "Framework contract for the evaluation studies of the CAP, synthesis and cross-thematic issues"</p>	<p>Specific expertise in Pillar 2 evaluation; experience in conducting evaluations related to the third general CAP objective.</p>	<p>Specific expertise in Pillar 1 evaluation; experience in conducting evaluations related to the first and second general CAP objectives.</p>
<p>Unrivalled technical assistance track record including long-term expertise in the operation of European help desk services and secretariats, full-cycle communication activities, management of pan-European networks and working groups, capacity building, workshops and training activities delivered for EU projects and programmes.</p>	<p>Specialised company with more than 12 years of experience in running the Evaluation Helpdesk for DG AGRI.</p>	<p>Specialised company with more than 15 years of experience in implementing evaluation studies for DG AGRI.</p>
<p>In-house communications and digital teams of over 80 permanent employees with in-house creative and graphic design services, in-house web, digital and audio-visual capabilities, and in-house editorial team.</p>	<p>Network of geographic experts with well-established relationships with Member States' Managing Authorities.</p>	<p>In-house CAP evaluation experts and access to a large network of thematic and geographic experts.</p>
<p>Large company (&gt; 500 employees) headquartered in central Brussels with fully equipped offices and meeting room facilities along with onsite IT and admin support.</p>		
<p>Offices across Europe along with large European network including thematic and geographic experts and academics with participation in several Horizon 2020 projects.</p>		

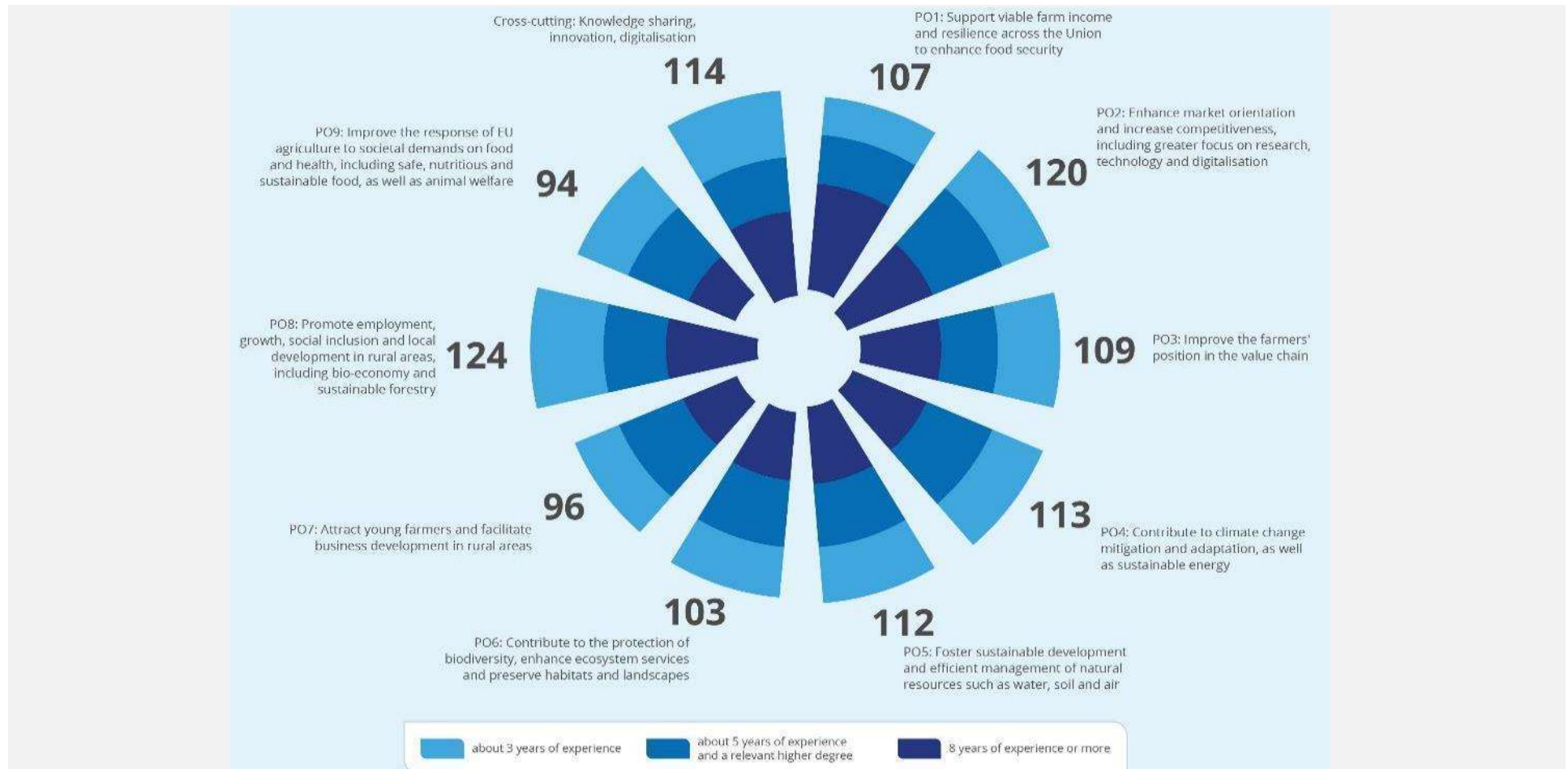
# The Evaluation Helpdesk Team

## Four main operating bodies:

1. A Brussels-based **Permanent Team** supported by a 'backstopping team' and a support team
2. A **Core Team** of 16 CAP evaluation experts
3. Pool of **50+ Geographic Experts**
4. Pool of **50+ Thematic Experts**



# Knowledge & experience of network of experts



# We are looking forward to working with you

## Contact

Olivier Chartier: [Olivier.chartier@ecorys.com](mailto:Olivier.chartier@ecorys.com)

Hannes Wimmer: [hannes@ruralevaluation.eu](mailto:hannes@ruralevaluation.eu)