

ENRD Workshop on Social Inclusion & Experience of the Swedish Network

Leader/CLLD subgroup meeting
Brussels, 16 Feb 2016

ENRD Workshop on

The role of LEADER/CLLD and networking in supporting social inclusion in rural areas

When? 17 March - Where? Brussels, L42

Objective: Discuss opportunities provided by the RDPs for supporting social inclusion in rural areas

- Exploring examples of ‘integrated social inclusion strategies’
- Focus on the added value of **LEADER/CLLD** - LAGs with experience in social inclusion
- Focus on specific marginalised groups: **immigrants, Roma, youth**
- How networks can contribute to the process? – **NRN experience**

Limited number of participants at the workshop, but...

If interested contact: social-inclusion@enrd.eu

or Edina Ocsko (edina.ocsko@enrd.eu)

Social inclusion of refugees and immigrants in Swedish rural areas

Charlotta Heimersson

LAG manager Leader Mälardalen

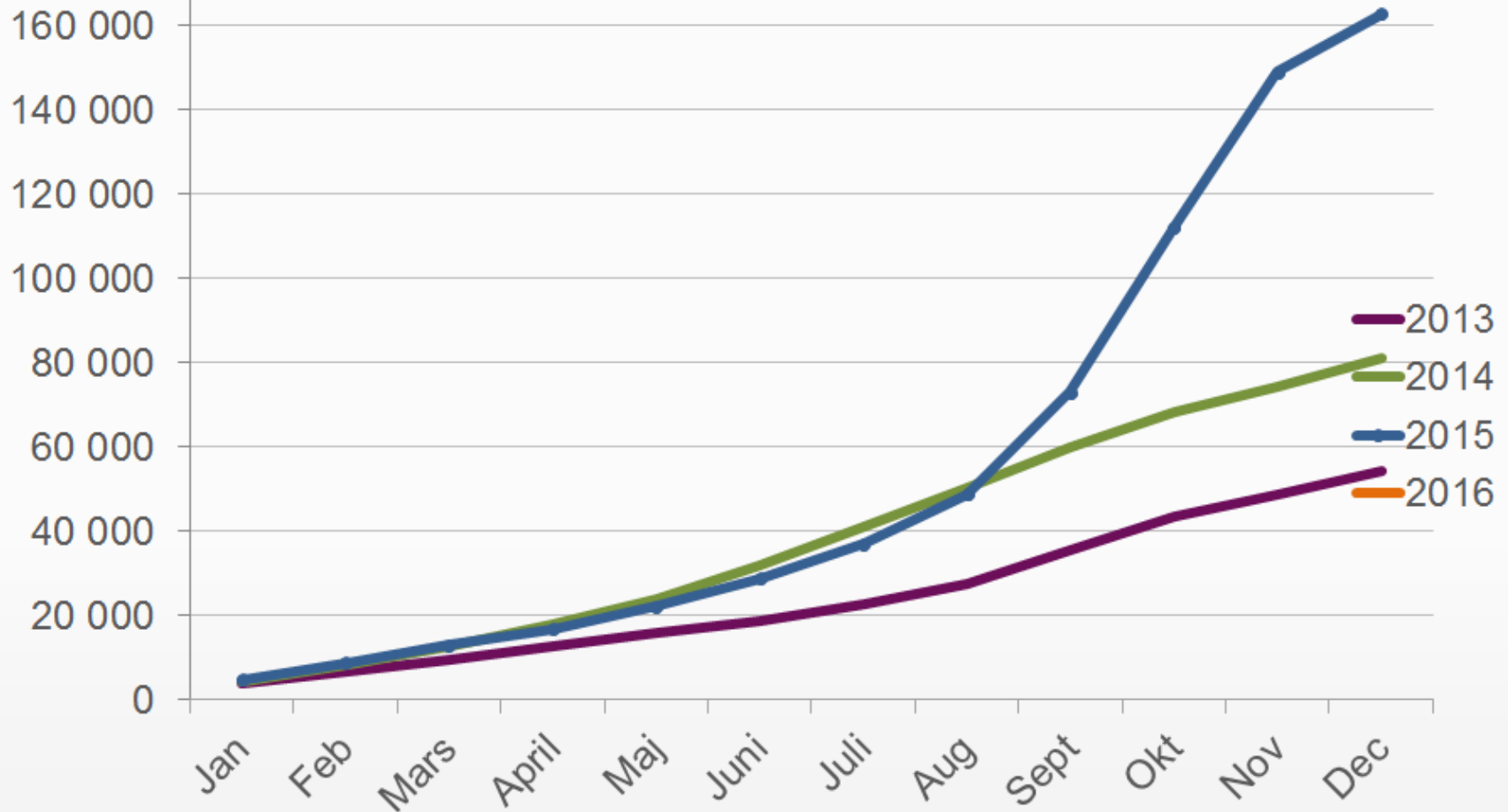
Representing the Swedish Rural Network



Why is social inclusion important to us?

- Has been on the agenda for a long time
- With the refugee crisis even more urgent
- Opportunity and challenge
- What can Leader and NRN:s do?
- How can we make a difference?

Asylum seekers in Sweden 2013, 2014 and 2015



Small rural villages



Undrom, Sollefteå:	85 inhabitants.	200 refugees.
Trensum, Karlshamn:	106 inhabitants.	300 refugees.
Långträsk, Piteå:	109 inhabitants.	52 refugees.
Byxelkrok, Borgholm:	129 inhabitants.	133 refugees.
Dalskog, Mellerud:	133 inhabitants.	124 refugees.
Blackstad, Västervik:	145 inhabitants.	120 refugees.
Gysinge, Sandviken:	149 inhabitants.	200 refugees.
Virestad, Älmhult:	155 inhabitants.	81 refugees.
Trehörningsjö, Örnsköldsvik:	160 inhabitants.	50 refugees.
Rätan, Berg:	195 inhabitants.	84 refugees.
Stavsjö, Nyköping:	212 inhabitants.	150 refugees.
Liden, Sundsvall:	254 inhabitants.	110 refugees.
Ramsberg, Lindesberg:	257 inhabitants.	55 refugees.
Hällnäs, Vindeln:	259 inhabitants.	500 refugees.
Åsarna, Berg:	268 inhabitants.	148 refugees.

Rural areas need everyone to stay

- To meet the challenge with decreasing population
- To keep local schools, shops, health care and other services
- To meet the problems with an upcoming labour shortage in different sectors



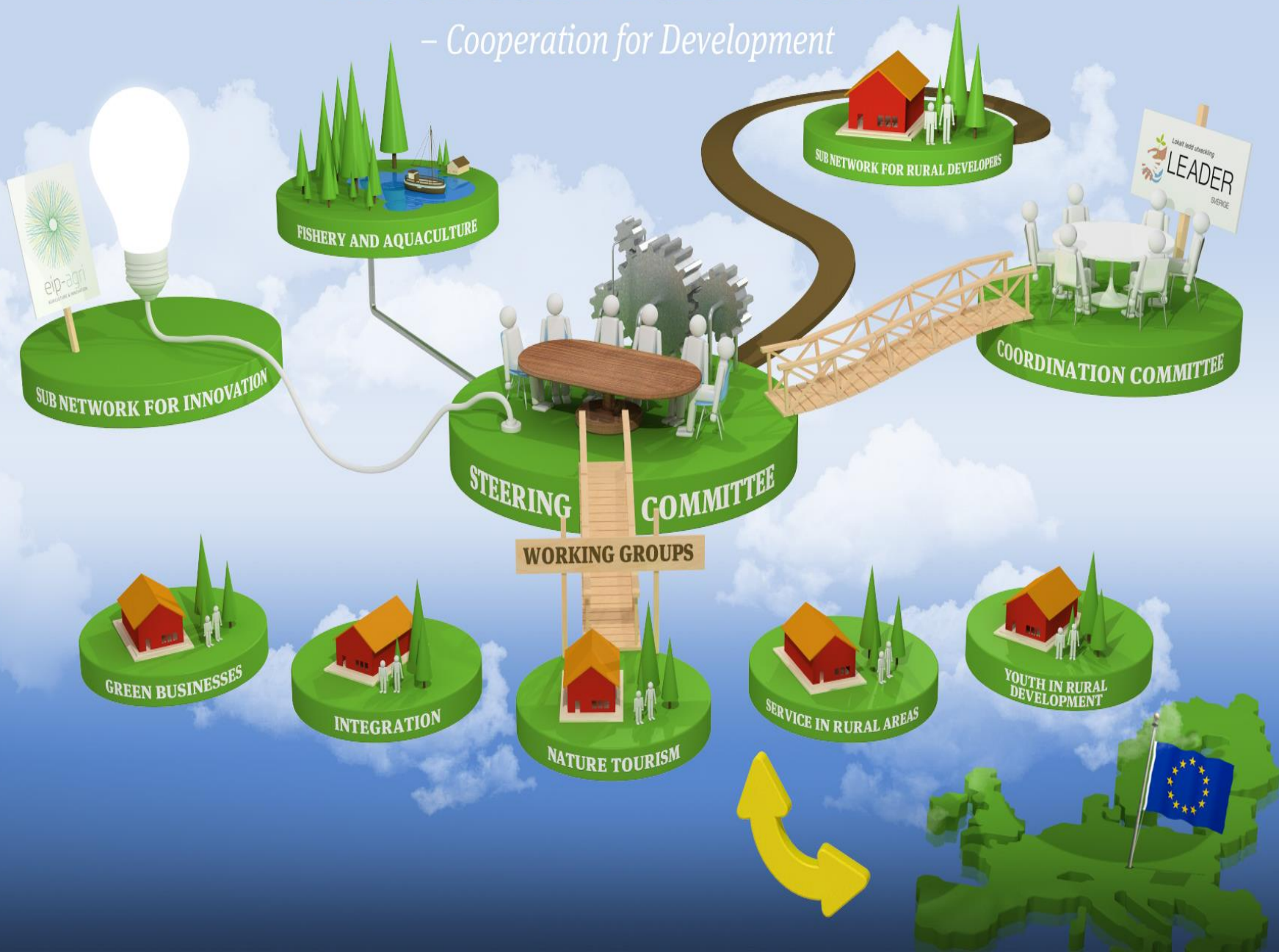
Social inclusion in rural areas?

- Less than 10 of 100 stay in rural areas
- With early social inclusion 20-30 of 100 want to stay
- We need commitment, involvement and engagement from the
 - Local community (friendship, local knowledge)
 - NGOs (social life, training)
 - Business sector(internship, matchmaking for jobs)
 - Municipalities(education, healthcare, housing)
- Reduce prejudice!



The Swedish Rural Network

– Cooperation for Development



Impressive efforts by local actors

Results from a survey undertaken by the Rural Network working group on social inclusion of refugees and immigrants

- Volunteer language introduction
- Internship and job matching
- Volunteer transportation
- Finding and matching houses for those who want to stay
- Society guidance and help with other contacts with authorities
- Include refugees in ordinary recreational activities, such as sport and cultural activities
- Special events to promote meetings between locals and refugees
- Take refugees on study trips
- Teach about the local landscape and nature
- Collect clothes, etc to supply the refugees



The NRN group collect and disseminate good examples through articles and short films



In Sollerön, nine different nationalities play in the soccer team – it brings people together

To start a company, promote local food products and promote integration. That's the objectives for the Project International Food Orust.



Swedish NRN Thematic Working Group

Social Inclusion of Refugees and Immigrants

- The Agriculture and Rural Economy Society
- The Swedish Football Association
- The County Administration Board
- The Swedish Village Action Movement
- Private expert
- The Federation of Swedish Farmers
- The Swedish Board of Agriculture
- LEADER
- SIOS, The Cooperation Group for Ethnical Associations in Sweden
- The Swedish public employment service
- The Migration Agency
- The Federation of Business Owners



Working group action plan

Supporting local civil society, LAGs and NGOs for social inclusion

- Mapping:
 - Overview
 - Finding good examples
 - Finding areas with potential
- Handbook, checklists, web
- Disseminating good examples
- Seminars
- Test models for inventory housing in rural areas
- Assisting ethnic organisations in rural areas
- Meeting decision makers, MPs etc



LAG Leader Mälardalen

- Social inclusion in the strategy before the refugee crisis
- Feasibility study on integration and social inclusion as soon as possible
- Where in the process do we come in?
- How can Leader make a difference?
- Small scale/umbrella projects?
- Synergies with other projects in order to meet our own targets and objectives



The **ENRD Workshop on Social inclusion** will aim to identify further practices from NRNs, LAGs and other relevant stakeholders...

...and make recommendations for improvement

17 March 2016

