



MINISTRY OF AGRICULTURE AND RURAL DEVELOPMENT
GENERAL DIRECTORATE RURAL DEVELOPMENT
MANAGING AUTHORITY FOR NRDP



RDP 2014-2020 EVALUATION

Implementation of the Evaluation Plan

European Evaluation Helpdesk - Good Practice Workshop 28-29 June, 2021

Camelia Popescu

Evaluation Unit

Managing Authority for NRDP Romania



GOVERNANCE AND COORDINATION

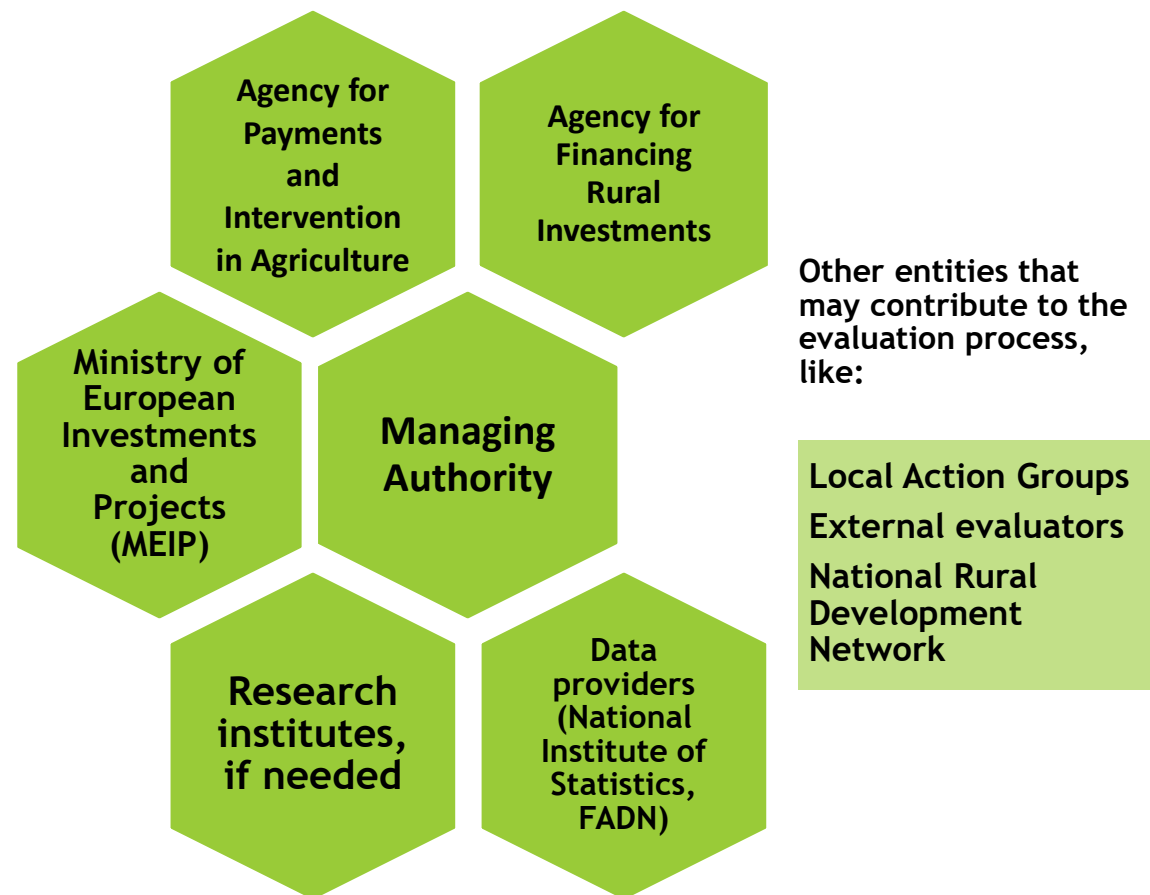
Implementation of the NRDP Evaluation Plan 2014-2020



❖ The evaluation plan of NRDP 2014-2020 is transposed into annual evaluation plans detailing the evaluation activities that will be carried out during the year, and reported to:

- ✓ the Monitoring Committee;
- ✓ the Evaluation Steering Committee (ESC)

The **ESC** has technical and operational advisory role in evaluation activities, with **members** from all relevant structures, **representatives of:**





Planning evaluation activities



Since 2015, **6 Annual Evaluation Plans** were approved, targeting (in addition to compulsory evaluation activities) projects such as:

❖ Thematic evaluation studies:

- ✓ Evaluation of poorly accessed measures within the Romanian RDP 2014-2020 (2019);
- ✓ Evaluation of the impact of over-regulation on the implementation of the Romanian RDP 2014-2020 (2019);
- ✓ Mountain area - (2018);
- ✓ Performance framework - (2019);
- ✓ Small farms and the development of associative forms - (2020);
- ✓ Administrative capacity in the implementation of NRDP - (2020);
- ✓ Environmental and climate measures of NRDP 2014-2020 - (2020);
- ✓ **Results of the National Rural Network (NRN) - *being developed during 2021-2022***;
- ✓ **Socio-economic and environmental benefits the commitments for Areas with Natural Constraints - *being developed during 2021-2022***



❖ Administrative capacity building activities



Identifying evaluation needs



- ❖ **Evaluation needs** target several levels:
 - ✓ qualitative and sufficient data;
 - ✓ relevant and useful evaluation results;
 - ✓ interconnected processes;
 - ✓ strengthened governance structure.

- ❖ Concern focused on **carrying out activities** that cover these categories of needs:
 - ✓ consulting the relevant structures;
 - ✓ analysing the evaluation results;
 - ✓ training activities;
 - ✓ participation in good practice dissemination events.



FOLLOW UP ON THE RECOMMENDATIONS OF EVALUATION



Implementing the recommendations and monitoring the measures



- ❖ The results of the evaluation studies contain **recommendations to improve the implementation of the programme** as well as the post-2020 regulatory framework.
- ❖ Together with the structures responsible for the implementation of the recommendations, **measures for implementing the recommendations and implementation deadlines** are agreed.
- ❖ Monitoring fiches of the planned measures are drawn up, which are **updated quarterly with the stage of the measures taken**, with possible adjustments depending on the factors influencing the decisions.



Strengthening monitoring and evaluation capacity



- ❖ **Developing the capacity for evaluation and monitoring of the staff of the institutions involved in the implementation of the RDP 2014-2020**

PURPOSE

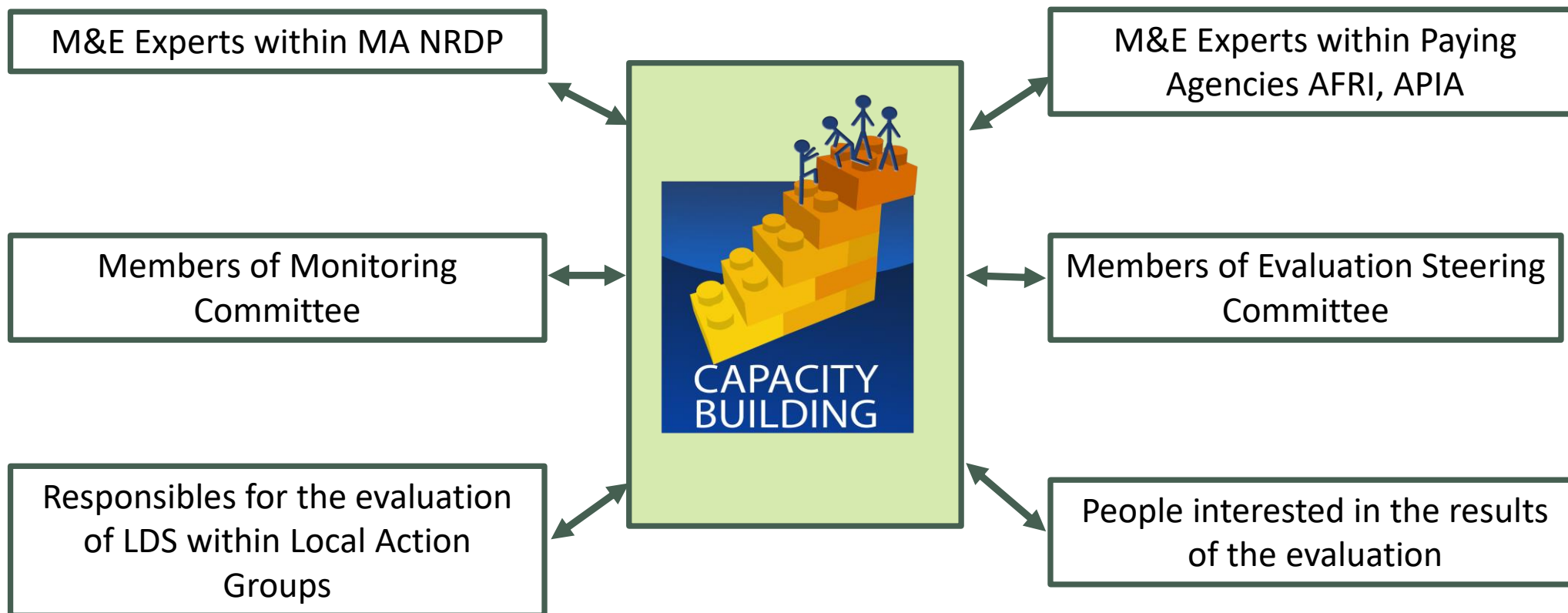
- ✓ **Strengthening the administrative capacity needed for the evaluation of RDP 2014-2020**
 - by ensuring a **qualitative level of experience and knowledge** in the field of **evaluation** among the actors involved in the implementation of RDP;
 - by **raising awareness** among these actors on the role of evaluation.

Project under implementation (2018 - March 2022)



Capacity building on Monitoring and Evaluation

Target groups





Capacity building on Monitoring and Evaluation

Type of activities



1. Analysis of the evaluation and monitoring system RDP 2014-2020

2. Support in the evaluation activities carried out by the Managing Authority

3. Training and exchange of experience to strengthen M&E capacity

❖ Problems identified during the programming period 2014-2020



- ✓ the **long period** of the **planning** and running a public procurement process due to the national legislation;
- ✓ the **difficult access** of evaluators to certain **information/data**, monitoring data (relevant for the evaluation) related to:
 - ✓ difficult process of collecting and processing data: eg., inadequate levels of aggregation of the data;
 - ✓ not very recent values for certain indicators (esp. agri-environment), difficulties in identifying proxy indicators;
- ✓ correlating the **moment** of the evaluation results with the different **stages of program implementation** / planning of future stages.



Lessons learned in the evaluation process 2014-2020



❖ Suggestions for improving the post - 2020 evaluation



- ✓ Launching **projects** for collecting specific indicators;
- ✓ Maintaining a constant **dialogue with the evaluator and the actors involved in the evaluation process** to agree on the best tools and ways to collect data and have a realistic planning;
- ✓ Interconnecting the structures involved in the cycle of a program (planning, implementation, monitoring and evaluation);
- ✓ Carry out **diverse number of activities** to understand the needs and prioritize them in relation to the stage of program implementation / development of future policies;
- ✓ Continuing activities to **strengthen evaluation capacity and raise awareness** of the importance of the evaluation process.

Thank you!

Managing Authority for NRDP

www.madr.ro

Contact: biroul.evaluare@madr.ro

