



# Access to Services

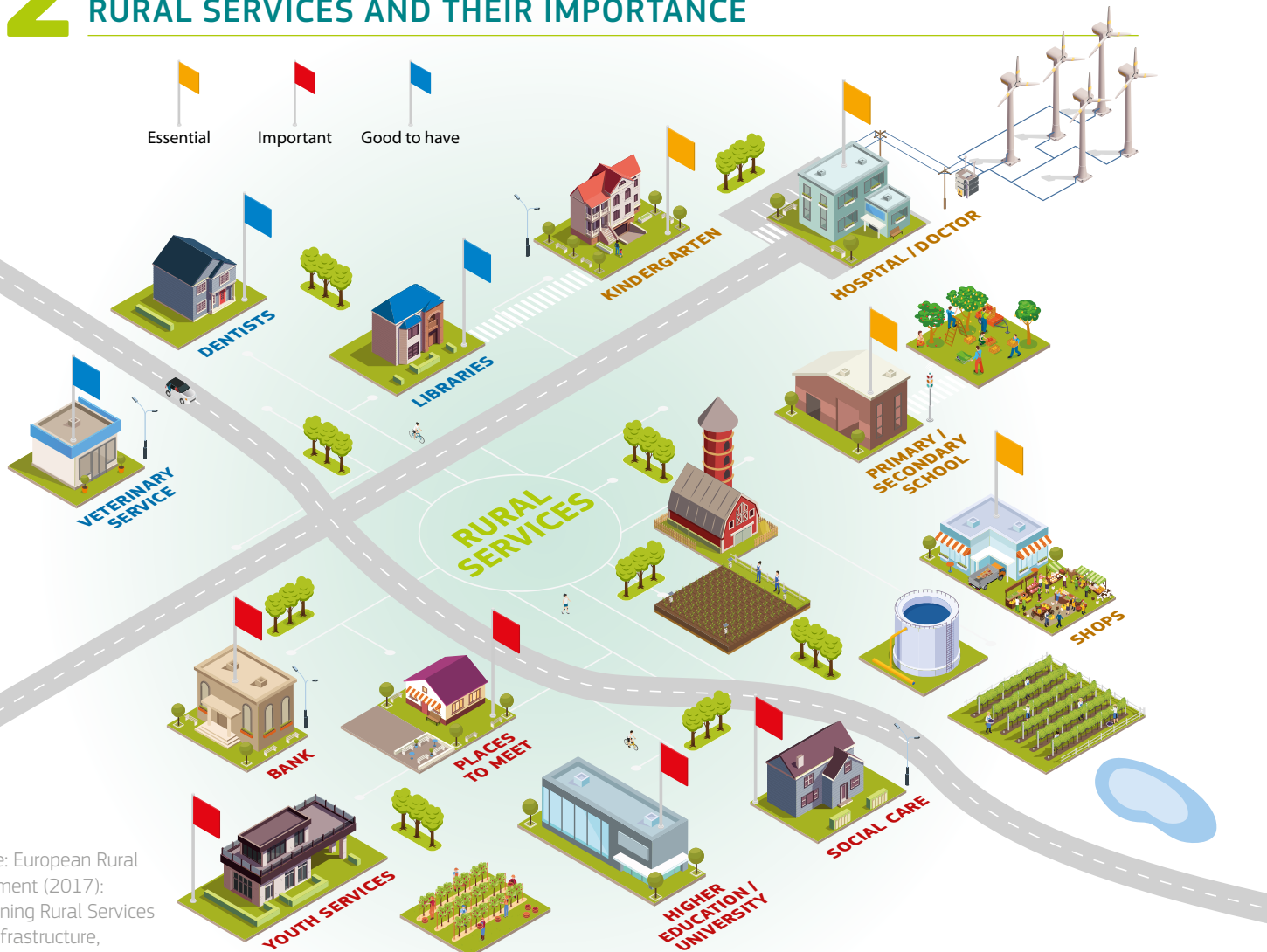
## Factsheet

Photo © Freepik

## 1 INTRODUCTION

The accessibility of rural services is one of the key factors to help rural areas thrive and make them more attractive and viable. To achieve this goal, it is essential to provide the relevant infrastructure (such as water pipelines, electricity supply, roads, broadband etc.), to bring together public and private partners and to create synergies between the different policies. The EU plays an important role in this endeavour.

## 2 RURAL SERVICES AND THEIR IMPORTANCE

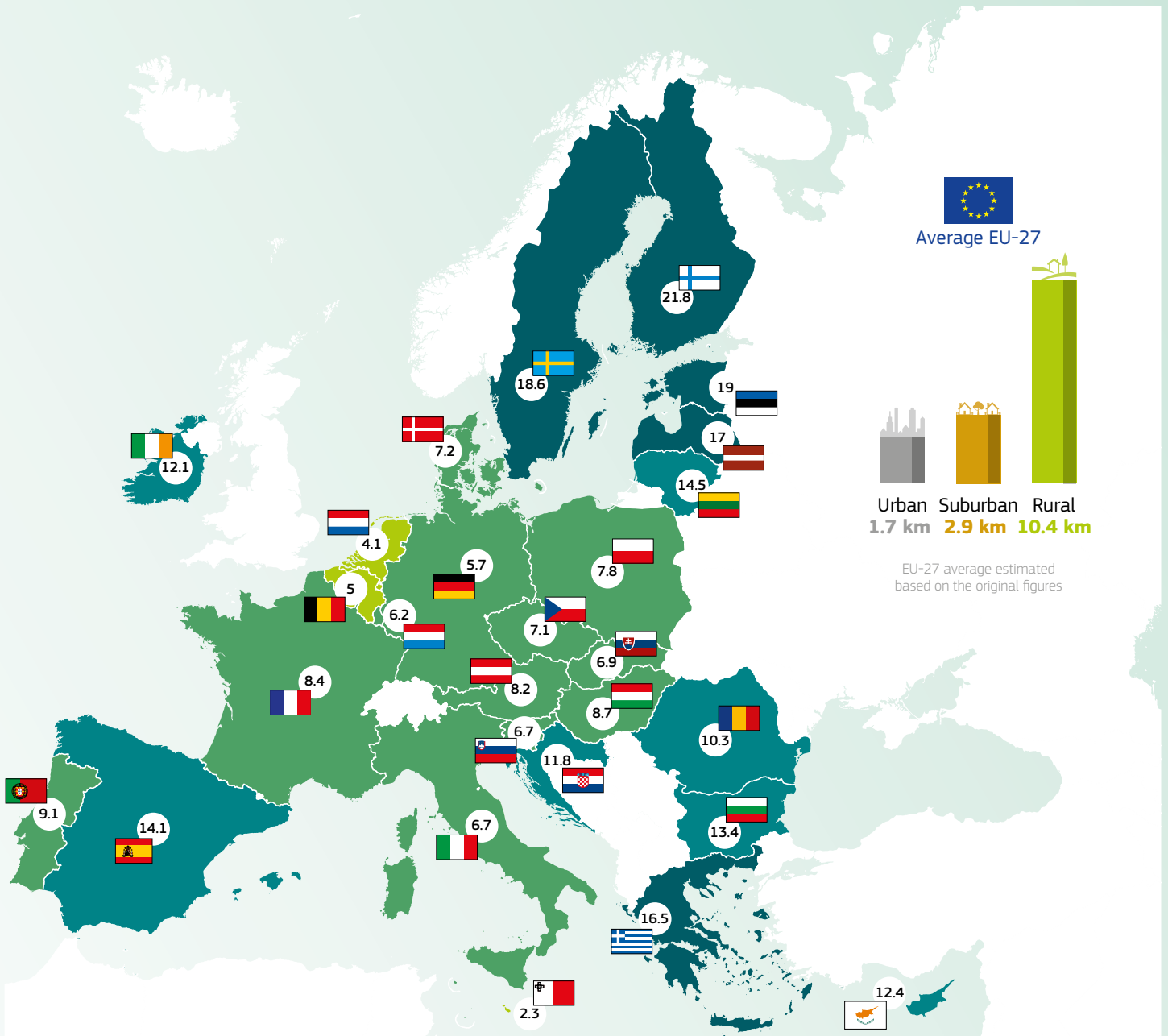


Source: European Rural  
Parliament (2017):  
Sustaining Rural Services  
and Infrastructure,  
Project report  
[www.europeanruralparliament.com](http://www.europeanruralparliament.com)

# 3

## GENERAL ACCESSIBILITY OF RURAL SERVICES

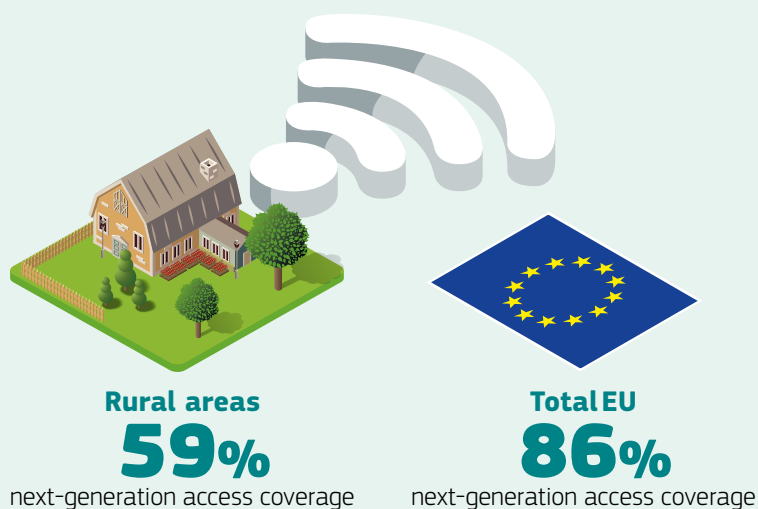
Average distance to the nearest local facility in rural areas, serving to 5 to 10 thousand people



- Up to 5 km: MT, NL, BE
- up to 10 km: DE, LU, SI, IT, SK, CZ, DK, PL, AT, FR, HU, PT
- up to 15 km: RO, HR, IE, CY, BG, ES, LT
- 15 km and above: EL, LV, SE, EE, FI



# 4 INTERNET AND MOBILITY AS ENABLING FACTORS

## ACCESS TO HIGH SPEED INTERNET\*



### Rural-urban divide (fixed standard broadband)\*\*

#### ▲ Highest

-  Greece
-  Portugal
-  Bulgaria
-  Romania

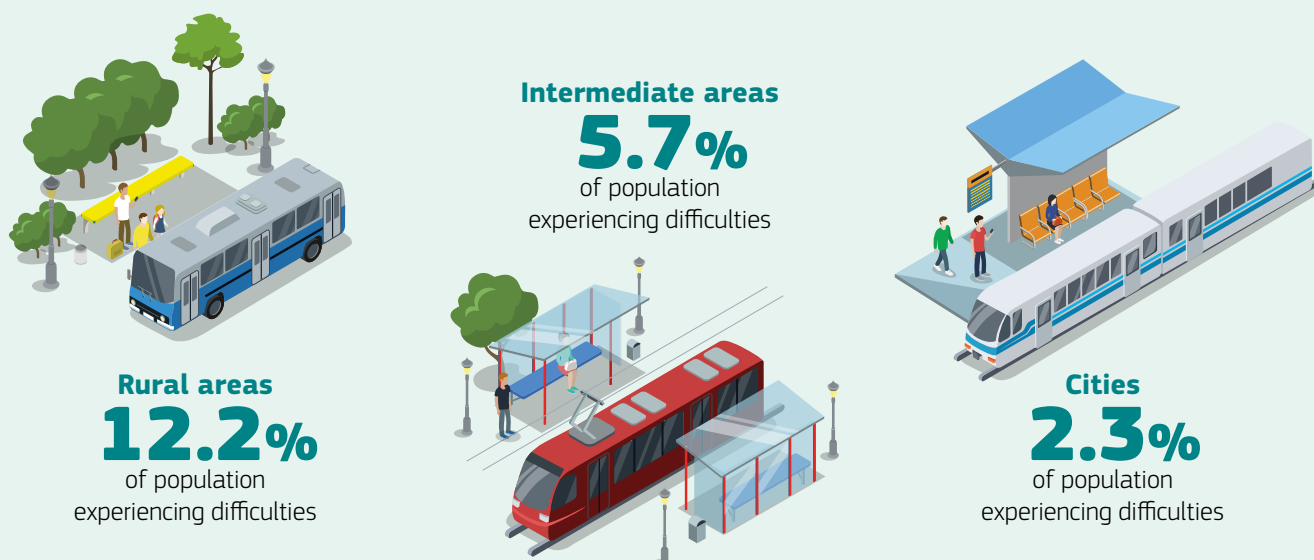
#### ▼ Lowest

-  Estonia
-  Austria
-  Italy

\* Source: EC (2020) Digital Economy and Society Index Report 2020 - Connectivity [https://ec.europa.eu/newsroom/dae/document.cfm?doc\\_id=67079](https://ec.europa.eu/newsroom/dae/document.cfm?doc_id=67079)

\*\* Source: Eurostat (2018): Internet access in households by degree of urbanisation [https://ec.europa.eu/eurostat/statistics-explained/index.php/Digital\\_economy\\_and\\_society\\_statistics\\_-\\_households\\_and\\_individuals#Internet\\_access](https://ec.europa.eu/eurostat/statistics-explained/index.php/Digital_economy_and_society_statistics_-_households_and_individuals#Internet_access)

## ACCESS TO PUBLIC TRANSPORT



Source: European Parliament (2017) Rural poverty in the European Union [https://www.europarl.europa.eu/RegData/etudes/BRIE/2017/599333/EPRS\\_BRI\(2017\)599333\\_EN.pdf](https://www.europarl.europa.eu/RegData/etudes/BRIE/2017/599333/EPRS_BRI(2017)599333_EN.pdf)

# 5 CONTRIBUTION OF EUROPEAN AGRICULTURAL FUND FOR RURAL DEVELOPMENT (EAFRD)

## TARGET VALUES FOR EU RURAL DEVELOPMENT PROGRAMMES (RDPs) 2014-2020



**23%**

of the rural population to benefit from improved services



**14%**

of the rural population to benefit from new or improved ICT services/infrastructures

Source: ENRD (2017): Priority and focus areas summaries for FA 6B and 6C  
[https://enrd.ec.europa.eu/policy-in-action/rural-development-policy-figures/priority-focus-area-summaries\\_en](https://enrd.ec.europa.eu/policy-in-action/rural-development-policy-figures/priority-focus-area-summaries_en)

## EXAMPLES OF EAFRD-FUNDED PROJECTS



### INTEGRATED VETERINARY MOBILE LAB, ROMANIA

To better respond to clients' needs, an integrated mobile labo offering a range of veterinary services was put in place thanks to RDP Measure 6.

[https://enrd.ec.europa.eu/projects-practice/integrated-veterinary-services-using-mobile-lab\\_en](https://enrd.ec.europa.eu/projects-practice/integrated-veterinary-services-using-mobile-lab_en)



### MEDICAL HOUSE 'CELLA SANTÉ' AT PONT-À-CELLES, BELGIUM

Providing quality healthcare services for ageing citizens using RDP Measure 7.

[https://enrd.ec.europa.eu/projects-practice/medical-house-cella-sante-pont-celles\\_en](https://enrd.ec.europa.eu/projects-practice/medical-house-cella-sante-pont-celles_en)



### THE COOPERATIVE STORE AT BALLSTÄDT, GERMANY

RDP Measure 19-LEADER was used to support a combined village shop and café. An important meeting place for the local community, it became financially self-sustaining.

[https://enrd.ec.europa.eu/projects-practice/new-cooperative-store-ballstadt\\_en](https://enrd.ec.europa.eu/projects-practice/new-cooperative-store-ballstadt_en)

See more projects at [https://enrd.ec.europa.eu/projects-practice\\_en](https://enrd.ec.europa.eu/projects-practice_en)