

## Country summary for Italy

Rural Development in Italy is the overall responsibility of the Ministry of Agriculture, Food and Forestry. There is a National Strategic Plan for Italy which provides the overall policy framework for rural development in the country, complemented by 21 Rural Development Programmes for the separate administrative regions of the country. Each of these regions has developed an individual Rural Development Programme for the period 2007 - 2013 which defines the overall policy framework which is consistent with the National Framework for Rural Development and selection of specific measures that address the particular regional rural needs and differences.

## Contact Details

**Address:** Ministry for Agricultural, Food and Forestry Policies, Directorate General for Rural Development, Infrastructure and Services, Via xx Settembre, 20 00186 Roma, Italy

**Telephone number:** + 39 06 4665 5056 57

**Website:** <http://www.politicheagricole.it/>



**Map of Italy**  
(© European Commission)

## General socio-economic situation in rural areas in Italy

Being a country with 2.6 million (M) farms, and 13.2 M ha of UAA, Italy hosts a strong and varied agricultural production, mainly due to its stretching between the mountain climate of the Alps and some semi-arid areas of Sicily in the South. This high degree of variation encompasses also the socio-economic characteristics of land and farm management.

Mostly due to historical background, and partially to the geographical position respect to the main cities, agricultural systems range from small districts centred on typical quality produce (wine, cheese, meat, extra-virgin olive oil, etc), to the extensive farming of many internal hilly and plain areas, to the intensive farming/rearing patterns of the Padana Valley in the North (also strongly linked to agribusiness with their focus on commodities and livestock). This blend of distinct farming patterns can be found in almost every single Region, apart from the smaller ones (e.g. Valle d'Aosta, Trento and Bolzano), where a mountainous geo-morphological context forges the shape of agricultural activities in a more stringent way. Remote and mountain areas particularly suffer from unemployment and abandonment. In terms of economic importance, the bulk of agricultural production value comes from 7 Regions: Lombardy, Latium, Veneto, Emilia-Romagna, Tuscany, Piedmont, Campania.

Positive features, like the strength of produce with protected origin denomination (1<sup>st</sup> place in the EU in terms of number of recognized products), the large diffusion of organic farming (2<sup>nd</sup>

place in the EU in terms of surface), the strong orientation to export (10<sup>th</sup> place in the world in terms of value), and a wide diffusion of agri-tourism, couple with rather worrying ones: small average size of farms (5 ha of UAA), low level of training/education among entrepreneurs and high aging of them (6% is the ratio between younger/older farmers, compared to a EU average of 18%), low work productivity in agriculture and forestry (average in the food processing sector), low level of gross added value in the farm sector.

A rosier picture is offered by the environmental context, with high biodiversity in and around farming systems, a large amount of protected areas, strongest pollution threats under control, and a generally high value of landscapes. However, lack of proper enforcement of nature protection norms, together with the high percentage of soil prone to erosion (double the EU rate), and an often inefficient management of water resources, all represent concrete problems.

### Rural development challenges

Fragmentation of agricultural offer and inefficiency in many parts of the market chain represent the key problems of the Italian agriculture; this is true both for the group of the 16 Regions included in the Competitiveness objective, and for the 5 ones classified as in need of Convergence, all located in the South. This broad distinction (although each of the two groups approximately receives 50% of the FEASR budget) does not help in a more close identification of the path chosen to address rural development challenges, because every RDP retains its specificity, although almost all of them tend to follow the development model adopted in the previous programming period (2000/2006).

In order to better frame these and the other key challenges for rural development, the NSP classifies the Italian territory into four categories: A) urban poles; B) intensively farmed rural areas; C) intermediate rural areas; D) rural areas with severe development problems. In summary, interventions in the 1<sup>st</sup> category are quite limited and centred on ameliorating agri-environmental patterns, while "B" areas are interested mainly by the provision of services, as well as of help to convert from previously strong tobacco/sugar productions. Most interventions tend to be localised in the C and D areas. To make a comparison, the sum of "C" and of "D" areas according to the classification presented in the NSP broadly corresponds to the amount of Less advantaged areas identified via the OECD method (75.2% of the territory versus 77.4%).

In terms of regional/area peculiarities, it appears that key challenges affecting "A" zones are represented by pollution problems, property fragmentation, and inadequate development of short-chains between agricultural producers and consumers. Examples of such issues can be found in the neighbouring areas of main cities like Milan, Turin, Florence, Naples, Palermo.

For what concerns the "B" areas, critical challenges can be identified in lack of adequate agricultural infrastructures (e.g. irrigation), low modernisation of farm holdings, low integration between farms and the agribusiness sector. These intensively managed farm areas usually match the lowlands of the Padana valley (the main part of Piedmont, Lombardy, Veneto, Emilia-Romagna), and the plains of some Southern regions (e.g. Campania, Puglia, Sicily), where fruit and horticulture are practiced. In the "C" areas key challenges may be found in high production costs, in the severe aging of farm entrepreneurs, in lack of integrated initiatives to exploit rural and environmental resources, and in problems deriving from the re-conversion of some sensitive crops (tobacco, sugar). These zones can be more easily found in regions like Veneto, Tuscany, Marche, Umbria, Campania, Puglia, and wherever a transition

occurs between land devoted to cereals and the one allocated to specialized viticulture.

Finally, challenges in “D” areas are represented by settlements abandonment, high production costs, aging of entrepreneurs and of farm equipment, lack of services for the rural population. Such areas tend to overlap with the mountain chains of the Alps in the North, of the Apennines along central Italy, and with the internal mountains of many Southern regions (e.g. Abruzzo, Calabria, Sicily).

The recent process of adjustment linked to the availability of additional financial resources provided by the CAP Health Check, the European Economic Recovery Package, Modulation, and the Wine/Tobacco OCM (from now on simply called the “Health Check process”), enabled to focus also on 6 new challenges: climate change, renewable energies, water management, biodiversity, restructuring of the dairy sector, provision of innovative services in rural areas (broad band).

Water management and broad band provision seem the two challenges to which the majority (18) of Regions paid more attention, followed by Biodiversity (17); renewable energies the sector where less additional resources were allocated (only 11 Regions address this issue). Another interesting distinction refers to the fact that Convergence Regions tend to focus more on Biodiversity and climate change issues (all of them are placed in the South), whereas the ones in the Competitiveness objective are more inclined to allocate additional resources to the restructuring of the dairy sector (highly concentrated in the Northern regions).

### **Italian national strategic objectives**

Italy is a multi-RDP country, where rural development strategies are elaborated at regional level (19 Regions plus 2 autonomous Provinces-Trento and Bolzano, for a total of 21 RDPs) and only loosely coordinated at national scale. Moreover, difference in scale among Regions can be very high, and this is reflected in the respective RDP budget.

The NSP focuses on three main strategic objectives, chosen according to the Community Strategic Guidelines (CSG):

- 1-to improve the competitiveness of the farm/forestry sectors;
- 2-sustainable use of existing environmental and rural resources;
- 3-to improve the overall quality of life in rural areas, also by diversifying economic activities.

It can be easily seen that each strategic goal matches a given axis (1, 2, 3), with the 4<sup>th</sup> axis basically meant to serve as an integrated/bottom-up approach for reaching objectives n.2 and 3.

Looking at the key strategic objectives in more detail, the NSP states that objective 1 should be pursued mainly by: - promoting farm innovation and filieres integration; developing quality of farm and forestry produce; -strengthening the provision of physical and ICT infrastructures; -improving the entrepreneurial capacity of farm and forestry workers. For what concerns key objective 2, the NSP indicates as priority sub-objectives: -biodiversity conservation and safeguard of high-value agro-forestry systems; -conservation of water resources; -reduction of greenhouse gases; -countryside conservation.

Although a common feature of almost all the RDPs is the prevalent allocation of resources to Axis 2 (43.5% as national average, followed by Axis 1 with 38%), great variations can be found at regional level, in terms of the percentage allocated to each axis, to the measure design, and to the type of target beneficiaries. In broad terms, the high percentage allocated to axis 1 corresponds to the belief that in specialized/intense farming systems, productivity

can be greatly enhanced by strategic investments. The even greater amount of resources devoted to axis 2 can be explained by the acknowledged and well spread high value of the countryside and of landscapes, seen in their pivotal role for fostering diversification of farm/rural activities.

The relatively minor attention to axis 3 in terms of funding should be explained by the fact that, according to the NSP, its objectives can be better fulfilled if/when the previous two axis are properly supported and implemented. After the recent Health Check process, the RDPs opted for addressing the new 6 challenges mainly by adapting already selected measures, rather than introducing new ones. The additional funds were used primarily through the Axis 1, in order to handle the majority of the new challenges, while Axis 2 was frequently chosen to address Biodiversity issues, and axis 3 to ensure provision of innovative infrastructures (broad band).

### **Expected outcomes of the policy**

In Italy, quantitative indicators to assess outcome/impacts of rural development tools have been defined in both the RDPs and in the NSP, which should sum up the data from the various RDPs; this is not always possible due to the different approval date of the distinct RDPs by the Commission, compared to the period when the NSP has been written. Many indicators have been updated as a result of the Health Check process, but this varies according to the axis and indicator type.

The NSP outlines a series of 23 different Output indicators for what concerns axis 1, represented by intuitive quantitative targets according to specific measures (e.g. number of beneficiaries, number/value of investments, number of affected ha). 11 of these 23 indicators were revised upwards due to the Health Check process. A larger amount of Output indicators has been defined for the various measures of axis 2.: 32 of which 22 have been revised due to the Health Check process; the type of indicators is pretty similar to the one depicted for axis 1 (e.g. number of farms, amount of involved ha, etc).

Dealing with axis 3, we can find some 17 Output indicators, of which only 4 have been recently updated because of the Health Check process. In this case the indicators mainly focus on the number of new initiatives/enterprises set-up. Finally, 8 Output indicators (none of which has been revised due to the Health Check process) have been selected to track the implementation of axis 4.

The targets set for each indicator usually depend on the budget size of the RDP and on the strategic importance of the measure they track in each Region. However, this general pattern leaves room for some unexpected findings:

-concerning axis 1, Piedmont is the Region that devotes more attention to the set-up of training and information actions, as well as of advisory services, but Sardinia comes 2<sup>nd</sup> in this particular ranking. Campania leads the group of Italian regions both in terms of expectations regarding modernisation of farm holdings and provision of infrastructures for agriculture/forestry (with Emilia-Romagna and Sardinia coming at 2<sup>nd</sup> place in the respective rankings). Tuscany is the region that set by far the highest target concerning the level of participation of farmers in food quality schemes;

-regarding axis 2 measures, it was not easy to foresee Campania and Sardinia leading the group of regions in terms of mountain UAA supported, and Sardinia with Umbria leading the one supporting other less advantaged areas. Veneto appears the region involving more surface in Natura 2000 payments, and Apulia with Basilicata the regions setting the highest

targets in terms of agri-environmental payments;  
-for what concerns axis 3, Tuscany almost always leads the group: in terms of diversification into non-farm activities, regarding new business creation, in terms of encouragement of tourism initiatives, while is placed at the 3<sup>rd</sup> place when dealing with conservation of rural heritage. Campania is listed 1<sup>st</sup> for village renewal activities (with Piedmont a distant 2<sup>nd</sup>), Emilia-Romagna set the highest target for the provision of basic services to the rural population.

Even more interesting appears to examine the Outcome and the Impact indicators presented in the NSP, and how they vary due to the Health Check process.

16 Outcome indicators are listed by the NSP:

-5 concerning the 1<sup>st</sup> strategic objective (competitiveness): - n. of successful participants in training activities (167,429); - n. of farms managed by young entrepreneurs (24,536); - increase in value added in the involved farms (in thousands of € - 1,801,887); -n. of farms that adopt new technologies/produce (26,717); -value of quality recognized farm production (€6,710,121);

-5 indicators relate to the 2<sup>nd</sup> strategic objective (sustainable use of environmental resources): it is a common based indicator referring to the amount of land (ha) where a successful management enhances a certain environmental quality (e.g. biodiversity- 3,822,142 ha interested, water quality, soil quality- 2,894,131 ha, land abandonment, climate change);

-finally, 6 indicators refer to the 3<sup>rd</sup> strategic objective (quality of life in rural areas): increase of the value added portion from non-farm activities (€182,978,000); n. of employments created (5,195); increase in the n. of tourists (1,624,685); -n. of successful participants in training activities (21,000); -amount of rural population affected by the provision of improved services (7,156,435); - amount of rural population affected by the provision of broad band (2,124,637).

For what concerns the Impact indicators, the NSP outlines the 7 following ones:

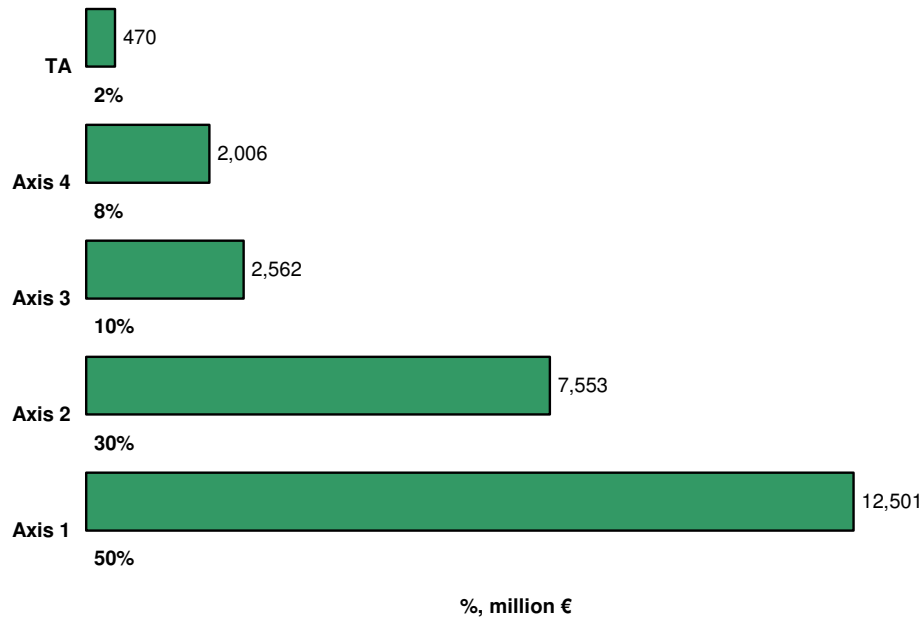
- increase in net added value;
- n. of new, full-time employments;
- increase in gross added value/worker;
- inversion in the negative trend leading to biodiversity loss;
- increase in high value natural land (659.471 ha);
- change in soil nutrient balance (- 5,4 kg of N/ha);
- production of energy from Renewable resources (1,060,774 ktoe).

It is interesting to note that, due to the Health Check process, 13 out of the 18 Outcome indicators have been revised, with an average upward trend of 6.4% for what concerns all the indicators in the objective 1; 4.6% for the indicators selected in objective 2, and 1.6% for the indicators concerning strategic objective 3 (apart from the increase in the access to broad band, where a 74.5% is planned). This pattern of change on one hand confirms what has already been stated in the previous paragraphs, that is to say the stress put on the measures implemented within axis 1 to cope with the new challenges. But on the other hand raises some doubts on the methodology adopted, because it seems quite strange that almost every indicator (even of very different nature) referring to a given objective should show exactly the same trend due to the additional resources made available by the Health Check process.

Such doubts are reinforced when looking at the Impact indicators. It appears strange that only 3 of the 7 listed indicators have been revised due to the Health Check process, and that, in particular, the two impact indicators concerning Biodiversity (the Farm Bird Index and the

change in the soil nutrient balance) are not included in the list. One should conclude that, notwithstanding the several updates regarding outcome indicators affecting Biodiversity, no actual impact should be expected on its state.

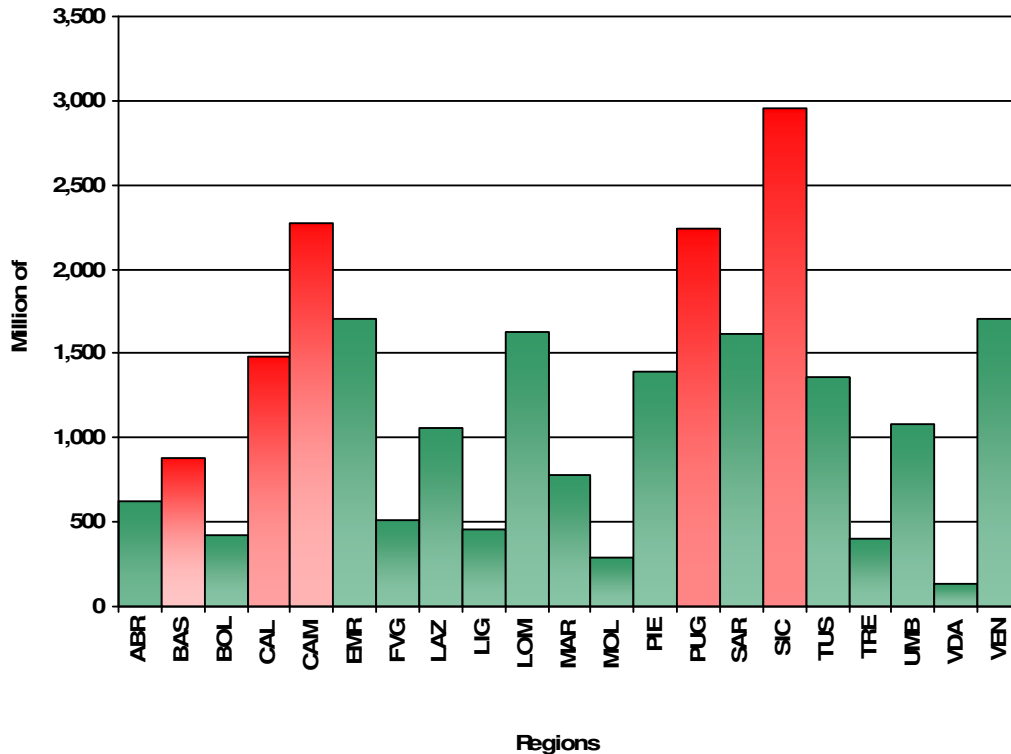
**Total country budget breakdown by axis: Total expenditure (including national/regional + EAFRD + private funding), of €25,090,624,693<sup>1</sup>**



Axis 1 (€12,500.83 million) represents 50% of the overall country budget, Axis 2 (€7,552.69 million) represents 30% of the overall country budget, Axis 3 (€2,561.67 million) represents 10% of the overall country budget, Axis 4 (€2,005.55 million) represents 8% of the overall country budget and Technical Assistance (€469.89 million) represents 2% of the overall RDP budget.

<sup>1</sup> Note that the NRN budget does not represent the part of the overall budget presented in this fiche.

## Regional break down of the country budget



The convergence regions are represented in red colour.

The regions in Italy that receive more than 55% of all the funding are Sicily (€2.9 billion), Campania (€2.3 billion), Puglia (€2.2 billion), Emilia-Romagna (€1.7 billion), Veneto (€1.7 billion), Lombardy (€1.6 billion) and Sardinia (€1.6 billion).

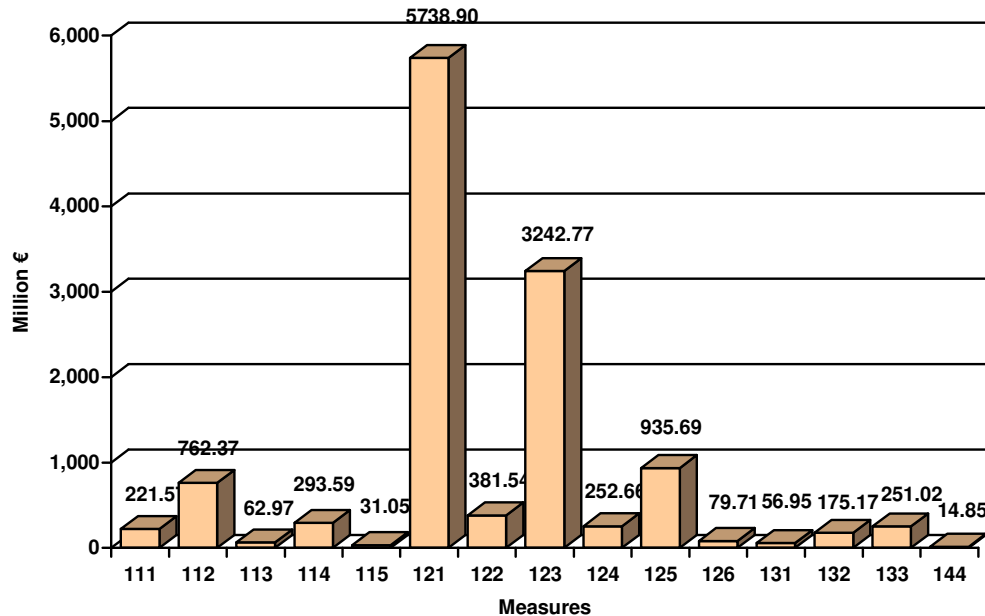
## Axis Information

### **Axis 1 objectives - Improving the competitiveness of the agricultural and forestry sector**

Four core objectives are established in Axis 1:

1. Promotion of the modernisation and innovation of enterprises and the integration of filières;
2. Consolidation and development of the quality of agricultural and forestry production;
3. Upgrading of physical and telecommunication infrastructure resources;
4. Improvement of the entrepreneurial and professional capacity of workers in the agricultural and forestry sector, and support for generational renewal.

**Axis 1 indicative budget breakdown by measure: Total allocated budget (including regional/national public funds + EAFRD + private funds) of €12,500,830,109**



It appears appropriate to provide some additional comments about how this axis has been used to address the new challenges introduced with the Health Check process. From the analysis of the updated RDPs it appears that n.121 represents the key measure (used in 8 regions) for handling climate change issues, while n.121 (6 Regions) and n.123 (4) the measures preferred to support renewable energies. For what concerns water resources, n.125 (11 regions) and again n.121 (8) are the measures selected by most Regions. Finally, measures n.121 (9) and n.123 (8) are the ones more often chosen to address the issue of restructuring of the milk-dairy sector. Veneto is the region that by far uses measures included in this axis to address the various new challenges, remotely followed by Piedmont and Campania.

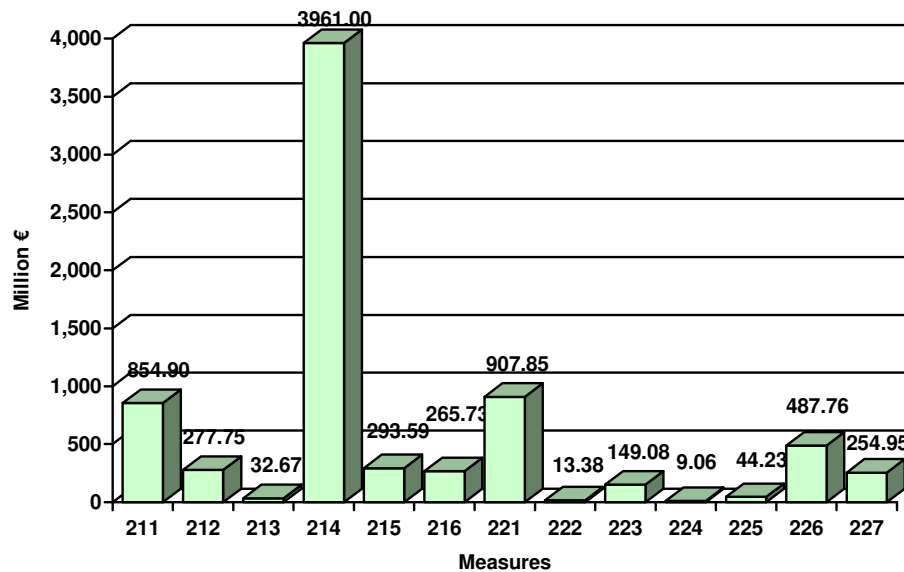
**Axis 2 objectives - Improving the environment and the countryside**

In Axis 2, four core objectives are established:

1. Preservation of biodiversity and protection and diffusion of high nature value added agro-forestry systems;
2. Qualitative and quantitative protection of surface and subsurface water resources;
3. Reduction of greenhouse gases;
4. Territory conservation.



**Axis 2 indicative budget breakdown by measure: Total allocated budget (including regional/national public funds + EAFRD + private funds) of €7,552,694,022**



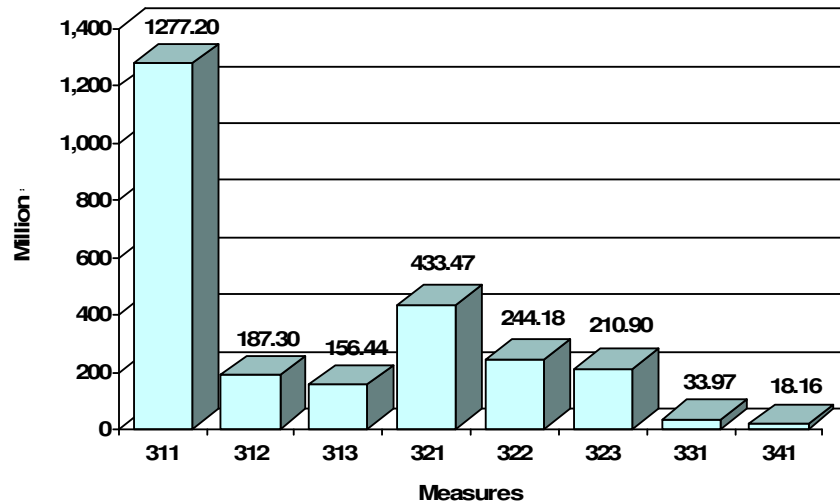
For what concerns the use of this axis for addressing the new challenges introduced with the Health Check process, it appears that measures n.214 is both used to address climate change problems (used in this sense by 8 Regions), and for handling Biodiversity issues (14 regions); also n.216 is adopted in 4 regions for the same objective. In terms of distinct areas, it appears that Valle d'Aosta, Bolzano Province and Sicily are the ones that make more use of this axis for addressing the new challenges.

**Axis 3 objectives - The quality of life in rural areas and diversification of the rural economy**

In Axis 3, the priority objectives established are as follows:

1. Enhancement of the attractiveness of rural territories for businesses and the population;
2. Preservation and creation of employment and income opportunities in rural areas.

**Axis 3 indicative budget breakdown by measure: Total allocated budget (including regional/national public funds + EAFRD + private funds) of €2,561,665,659**



In this axis, for what concerns the new challenges, the analysis of the revised RDPs shows that measure n. 311 has been often used (8 regions- mainly placed in central and southern Italy) to promote the diffusion of renewable energies, while measure 321 is the favourite (18 regions-all except for the 3 smaller/mountainous ones of Valle d'Aosta, Trento and Bolzano, which had already approved specific programs for such issue) one to support the provision of broad band in remote rural areas.

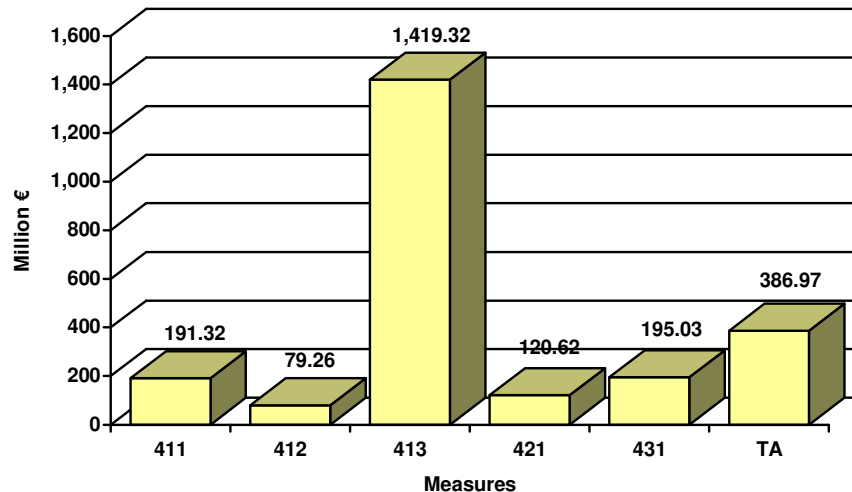
**Axis 4 objectives - Leader**

In Axis 4, the core objectives established are as follows:

1. Upgrading of local planning and management capacity;
2. Valorisation of the endogenous resources of the territories.

Number of LAGs envisaged in the RDP areas as of March 2010 was 189.

**Axis 4 indicative budget breakdown by measure: Total allocated budget (including regional/national public funds + EAFRD + private funds) of €2,005,547,591**



## The National Rural Network

In Italy, the extreme diversity of rural contexts and the specificity of the various development strategies outlined in the 21 RDPs, made the set-up of a National Rural Network (NRN) a logical move.

The strategic objectives of this network are:

- 1) to improve national and regional governance of farm/rural policies;
- 2) to strengthen the managerial and planning capacities;
- 3) to diffuse good practices and knowledge about rural development planning and dynamics among all rural stakeholders.

In addition, the NRN aims at improving capacity building at local, regional, and national level, and at enhancing the transnational vocation of rural development policies concerning cooperation.

The NRN operates under the responsibility and coordination of the Ministry of Agricultural, Food and Forestry Policies (MAFF P), General Direction of Rural Development, which represents the Managing Authority (MA) for the operational programme. Activities are partially implemented in a direct manner by the MA, and partially by three public institutes of the Agricultural Ministry (INEA, ISMEA, SIN).

The Central Unit for Animation and Coordination (UNAC) is the central core of the NRN that operates according to a yearly revised Operation Plan. Its content foresees the set-up of thematic groups, the implementation of various networking activities (including a web site), the promotion of stakeholders' events.

Such work is centred on the 3 main priorities outlined above, to which a series of actions is related:

- 1) Governance improvement: horizontal support to administrations engaged in the RDP implementation, support to the set-up of the national M +E system, provision of a forum on partnership, inter-regional workshops for rural development;
- 2) Strengthening of managerial/ planning capacities: training programmes for LAGs, organisation of know-how exchange initiatives, workshops on pilot ideas/projects;
- 3) Diffusion of good practices and knowledge: identification of transferable good practices, transfer of good practices into different contexts, support to the promotion of services to rural stakeholders, information on content/results achieved by the CAP and EU Rural Development policies.

Members of the NRN (which is freely open to new entries) includes main organisations and administrations working in the rural development sector at national, regional and local level, such as:

- regional and national administrations involved in the implementation of rural development programmes and structural funds; LAGs and their networks; professional organisations, forestry associations, cooperatives, local institutions (local councils, provinces and mountain communities), environmental associations and non-governmental organisations (NGOs), Chambers of Trade, technician associations involved in agribusiness.

The NRN is funded up to a maximum limit of 0.5% of the total EAFRD provision for Italy.

### **Monitoring and evaluation strategy**

In Italy, the key responsibility for monitoring and evaluating the progress of the RDP with respect to its planned outcomes lies at the regional scale. This is carried out using Common Monitoring and Evaluation Framework (CMEF) indicators, with minimum set that has been defined at national level. In fact, a National Monitoring System (NMS) and the National Evaluation System (NES) have been set-up by the Ministry for Agriculture and Forestry.

The first foresees the gathering and registration of key procedural data for every measure activated in each RDP, in way that enables their aggregation at national level. In particular, the required set of information concentrates on:

- personal data and structural farm data of beneficiaries;
- financial characteristics of the approved interventions, inclusive of progress indicators;
- financial and physical features of such interventions, enabling their monitoring.

The NMS also includes tools for allowing strategic monitoring of actual expenditure in order to prevent compulsory redemption of allocated funds. These minimum requirements in terms of data processing/exchange were set and agreed at the State/Regions conference of 20/03/2008.

At regional scale, Authorities can activate additional data requirements for the two key monitoring tasks (financial, strategic) at stake. The State verifies the coherence of the implementation of programs with the NSP, and it is in charge of preparing an annual report on the progress of implementation of such coordinating instrument.

Moreover, the Italian State supports monitoring activities carried out by the Monitoring Authorities (MA) set at regional level, with a specific coordinating structure established at the Ministry. MAs are overseen by a Monitoring Committee, and are responsible for producing the Annual Progress Report and Final Report, as well as ongoing, mid-term and ex-post

evaluations. Their monitoring system is supported by the Regional Agricultural Information System that provides relevant data from various registers, starting from the farm business one.

A pretty similar scheme operates for what concerns Evaluation tasks. Their main responsibility being in regional hands, the Ministry for Agriculture and Forestry supports their action mainly in order to guarantee that their operations comply with EU requirements. This activity enables to get also valuable information for the proper strategic monitoring of the NSP, and in particular of some horizontal themes and objectives.

The NES ensures comparability of evaluation results at National scale, and it is centred on the following, critical goals:

- orienteeing and guide evaluation at regional level, promoting common methods and tools;
- promoting the diffusion of evaluation activities, by organising training/updating initiatives;
- promoting ad-hoc evaluation efforts on special issues of National interest (e.g. Environment, integrated planning).

## Communication and publicity

The Italian NSP does not include a specific section on this topic. This is due to the fact that the bulk of the communication activities are delegated to the single Regions responsible for the implementation of the 21 RDPs, leaving to the national level the responsibility for ensuring mainly a networking task via the National Rural Network.

At regional scale, it seems that all the Authorities share a deep awareness for duly informing rural stakeholders and potential beneficiaries of the RDP measures, also because they need to spend the allocated budget within the deadlines set by the EU regulations, avoiding under-spending.

An information plan is consequently usually devised, including the following components:

- 1) information to potential beneficiaries: issue and distribution of the RDP (usually by a call centre, information desks and help desks, institutional websites), publishing call for the distinct RDP measures (via media advertising, leaflets, brochures, posters, tools for operators and intermediary organizations, information services through articles in the local newspapers radio, TV). More horizontal actions include training for administrators/officers, and publication of previous best practices;
- 2) Information to actual beneficiaries on: Administrative and selection procedures (information desk and help desk), requirements for applicants (brochure, web sites, desks set by professional organisations); implementation and updates on administrative process (help desks, e-mail, newsletter);
- 3) Information for the general public: Communication activities (newsletter, conferences, press conferences, meetings, etc); Information on RDP implementation (ad hoc dossier, Region web sites).

In addition, many Regions have set-up specific "Concertation Tables", where RDP key updates and measures' design are presented and discussed with a wide range of stakeholders, including environmental NGOs. This normally represents a relevant passage for estimating the RDP potential impact, and to improve the Region awareness about some sensitive rural issues.

All beneficiaries are informed of the EAFRD assistance at stake, and there is a due acknowledgement of the EU contribution in all related publicity over the implementation period.

## Annex I - Measures

<b>Axis 1 - Improving the competitiveness of the agricultural and forestry sector</b>	<i>Promoting knowledge and improving human potential</i>	<b>111</b>	Vocational training and information actions	
		<b>112</b>	Setting up of young farmers	
		<b>113</b>	Early retirement	
		<b>114</b>	Use of advisory services	
		<b>115</b>	Setting up of management, relief and advisory services	
	<i>Restructuring and developing physical potential and promoting innovation</i>	<b>121</b>	Modernisation of agricultural holdings	
		<b>122</b>	Improvement of the economic value of forests	
		<b>123</b>	Adding value to agricultural and forestry products	
		<b>124</b>	Cooperation for development of new products, processes and technologies in the agriculture and food sector and in the forestry sector	
		<b>125</b>	Infrastructure related to the development and adaptation of agriculture and forestry	
		<b>126</b>	Restoring agricultural production potential	
	<i>Quality of agricultural production and products</i>	<b>131</b>	Meeting standards based on Community legislation	
		<b>132</b>	Participation of farmers in food quality schemes	
		<b>133</b>	Information and promotion activities	
<i>Transitional measures</i>	<b>141</b>	Semi-subsistence farming		
	<b>142</b>	Producer groups		
	<b>143</b>	Providing farm advisory and extension services		
<b>Axis 2 - Improving the environment and the countryside</b>	<i>Sustainable use of agricultural land</i>	<b>211</b>	Natural handicap payments to farmers in mountain areas	
		<b>212</b>	Payments to farmers in areas with handicaps, other than mountain areas	
		<b>213</b>	Natura 2000 payments and payments linked to Directive 2000/60/EC	
		<b>214</b>	Agri-environment payments	
		<b>215</b>	Animal welfare payments	
		<b>216</b>	Non-productive investments	
	<i>Sustainable use of forestry land</i>	<b>221</b>	First afforestation of agricultural land	
		<b>222</b>	First establishment of agroforestry systems on agricultural land	
		<b>223</b>	First afforestation of non-agricultural land	
		<b>224</b>	Natura 2000 payments	
		<b>225</b>	Forest-environment payments	
		<b>226</b>	Restoring forestry potential and introducing prevention actions	
		<b>227</b>	Non-productive investments	
	<b>Axis 3 - Quality of life in rural areas and diversification of the rural economy</b>	<i>Diversify the rural economy</i>	<b>311</b>	Diversification into non-agricultural activities
<b>312</b>			Support for business creation and development	
<b>313</b>			Encouragement of tourism activities	
<i>Improve the quality of life in rural areas</i>		<b>321</b>	Basic services for the economy and rural population	
		<b>322</b>	Village renewal and development	
		<b>323</b>	Conservation and upgrading of the rural heritage	
		<b>331</b>	Training and information	
		<b>341</b>	Skills-acquisition and animation measure with a view to preparing and implementing a local development strategy	
	<b>Axis 4 - Leader</b>	<i>Implementing local development strategies</i>	<b>411</b>	Competitiveness
			<b>412</b>	Environment/land management
<b>413</b>			Quality of life/diversification	
<b>421</b>			Implementing cooperation projects	
<b>431</b>	Running the local action group, skills acquisition, animation			