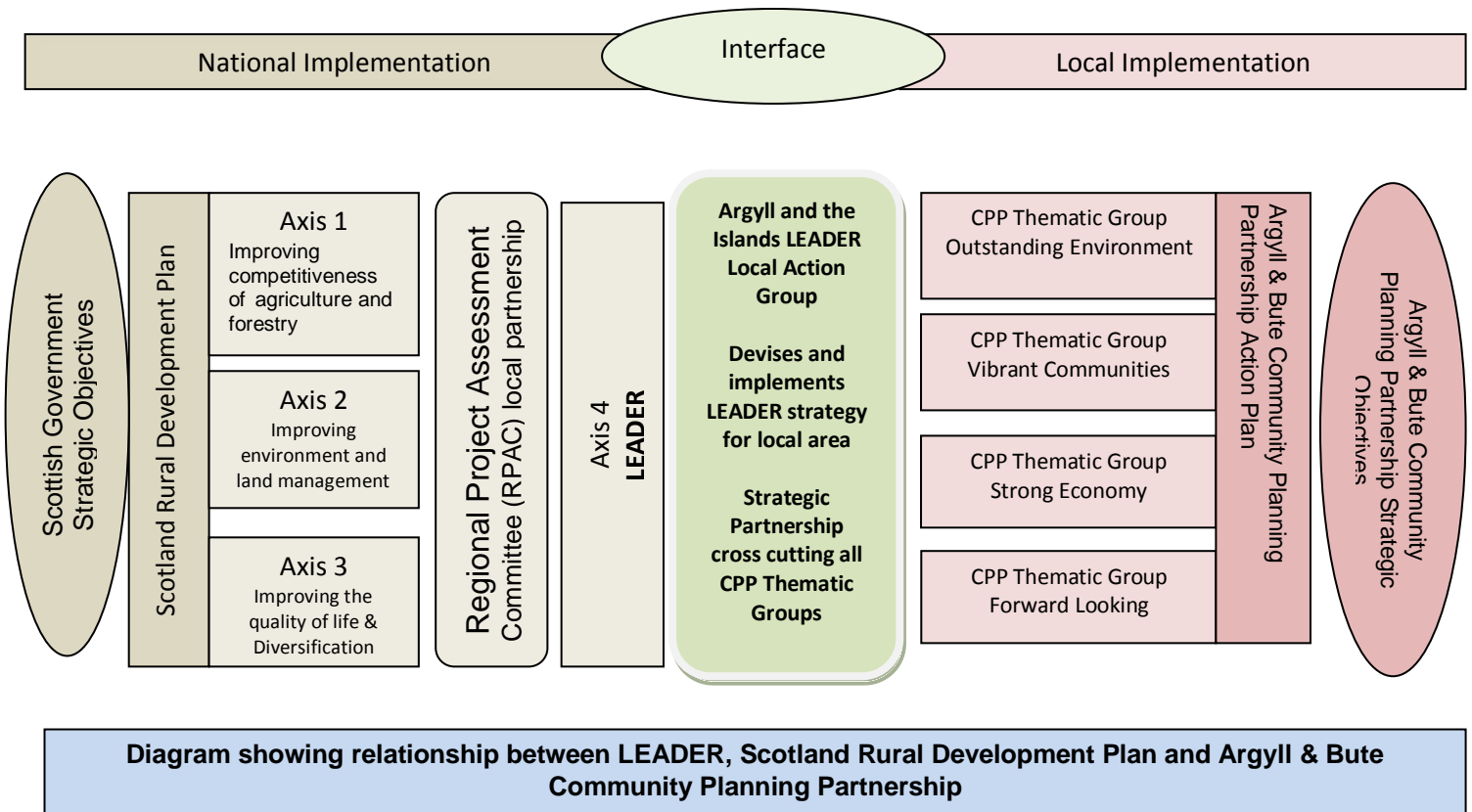


COMPLIMENTARITY WITH NATIONAL AND LOCAL PLANS

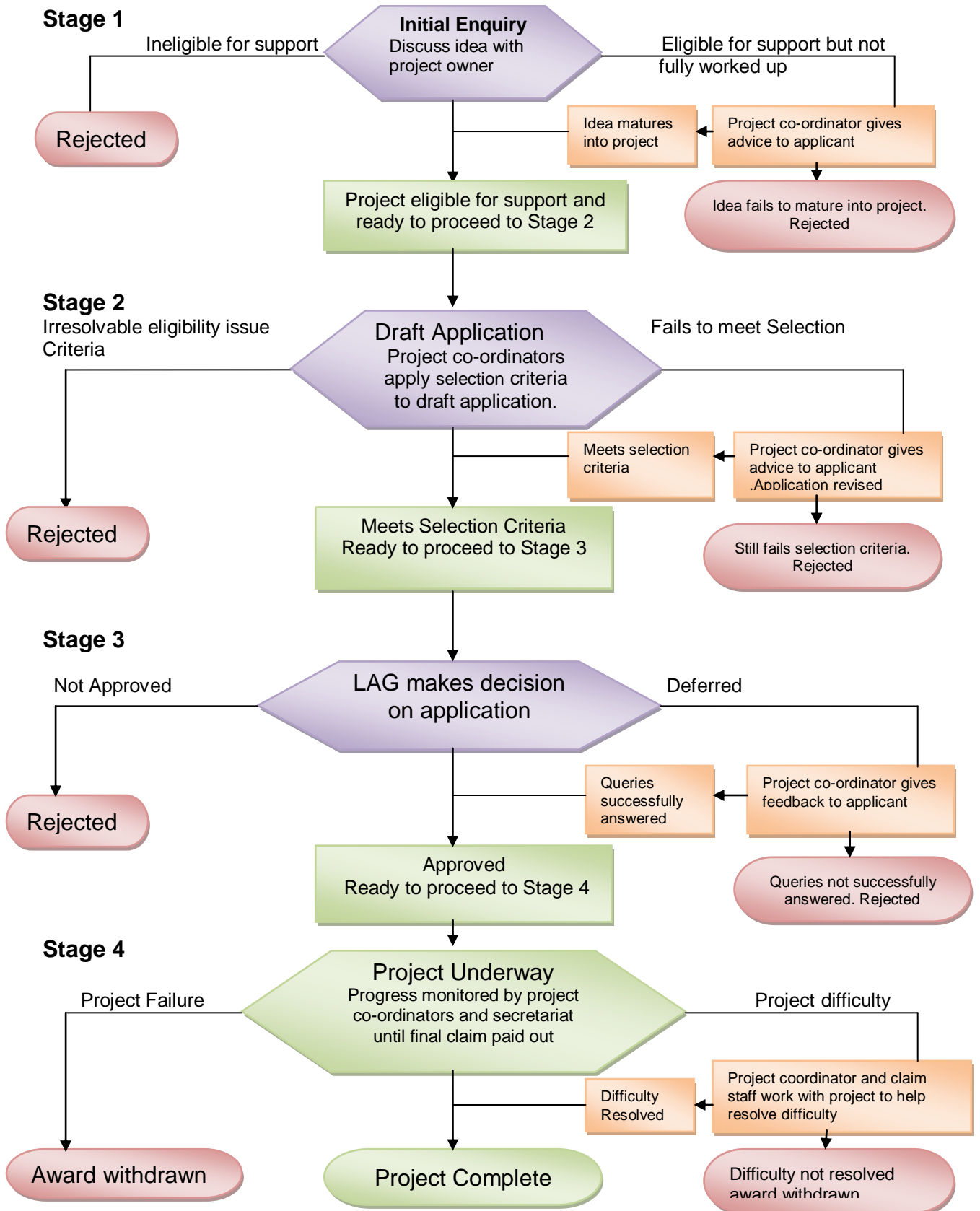
The Argyll and the Islands LEADER Local Development Strategy is closely aligned to the Argyll and Bute Community Partnership Community Action Plan and the Argyll Regional Priorities set by the Argyll Rural Project Assessment committee (RPAC). A diagram demonstrating this relationship is shown below.



The diagram opposite demonstrates the complexity of rural development and the number of organisations operating in the Argyll and the Islands LAG area

Argyll and the Islands LEADER plays a key role played by working across all sectors to enable rural communities to find their own solutions to development issues by piloting new approaches to rural development.

LAG members are familiar with the strategies and objectives which relate to their particular area of expertise at both a local and national level and are able to bring this knowledge to LAG meeting thereby ensuring an integrated approach through the area.



Flow Chart showing Argyll and the Islands LEADER Delivery Process

Overall Aim

To support the sustainable, community-based development of rural communities within the Argyll and the Islands LEADER Programme Local Action Group Area

Input

Grant funding from Argyll and the Islands LEADER Programme

Outcomes

1. An increase in the accessibility of information, support and services within the rural community
2. An increase in the sustainability of the voluntary sector
3. An increase in the number of community groups that identify and successfully deliver community priority projects
4. An increase in the number of community-based actions to enhance the rural heritage of Argyll and the Islands
5. An increase in the sustainability of tourism within Argyll and the islands
6. Cooperative initiatives leading to increased confidence within the agricultural community in Argyll and the islands
7. Woodland initiatives leading to increased use of the woodland resource
8. An increase in cooperation between the aquaculture and fishing sectors and the wider rural community.

Activities

Revitalising Communities

Supporting Voluntary Action
Improving Access
Enhancing Quality of Life
Enhancing the Rural Environment

Progressive Rural Economy

Strengthening the Rural Economy
Building Capacity
Improving collaboration
Encouraging Research & Development

Outputs

Community Facilities Created
Community Facilities Improved
Innovative Method of Local Service Provision
Marketing Activity Undertaken
New Markets accessed
Adding Value to Local Product
New Product Developed
Best Practice Model Transferred
Awareness Raising Event
Promotional Activity
Feasibility Study

Development Plan
Heritage Sites with Interpretation Introduced
Amenity Access Improved
Training Courses Delivered (Accredited)
Training Days Provided (Accredited)
Individuals Trained (Accredited)
Workshop Held (Unaccredited)
Job created
Job Safeguarded

Impact

Community groups, social enterprises, micro businesses, young people, older people, women and unemployed assisted resulting in a more robust rural economy

Overview Argyll and the Islands LEADER Programme



The European Agricultural Fund
for Rural Development
Europe investing in rural areas



The Scottish Government
Riaghaltas na h-Alba

