

THE MULTIFUND PLATFORM

Delivered by **South & East Cork Area Development (SECAD):**
A Local Action Group based in Southern Ireland

The MultiFund Approach in Action:

1. TARGET GROUP

Disadvantaged Youths

Action:

Develop film making hub for disadvantaged youths via the LCDP.

Multifund Approach:

1. Rural Transport Programme funding facilitated transport for the various groups contributing to the projects success.
2. Rural Development Programme funding is now being assessed by the individual hubs to purchase equipment and make the hubs self sufficient and independent.

2. TARGET GROUP

Women in Business

Action:

An ESF "Equality for Women" programme has attracted many entrepreneurs across the SECAD area- upon learning about the broader supports of SECAD one participant has sought:

- Tailored business mentoring support through the nationally Funded Local Community Development Programme (LCDP).
- Additional training through the ESF Equality for Women Programme.
- Capital grant aid through the Rural Development Programme 2007-2013.

This promoter is based in Youghal, Co. Cork. Youghal is a bypassed coastal town that has RAPID status, this represents the most disadvantaged urban areas and provincial towns in Ireland. The promoter has gained invaluable strategic business advice, made new business contacts via mentoring and accessed RDP funding. SECAD's support could not have been so comprehensive without the Multifund platform.

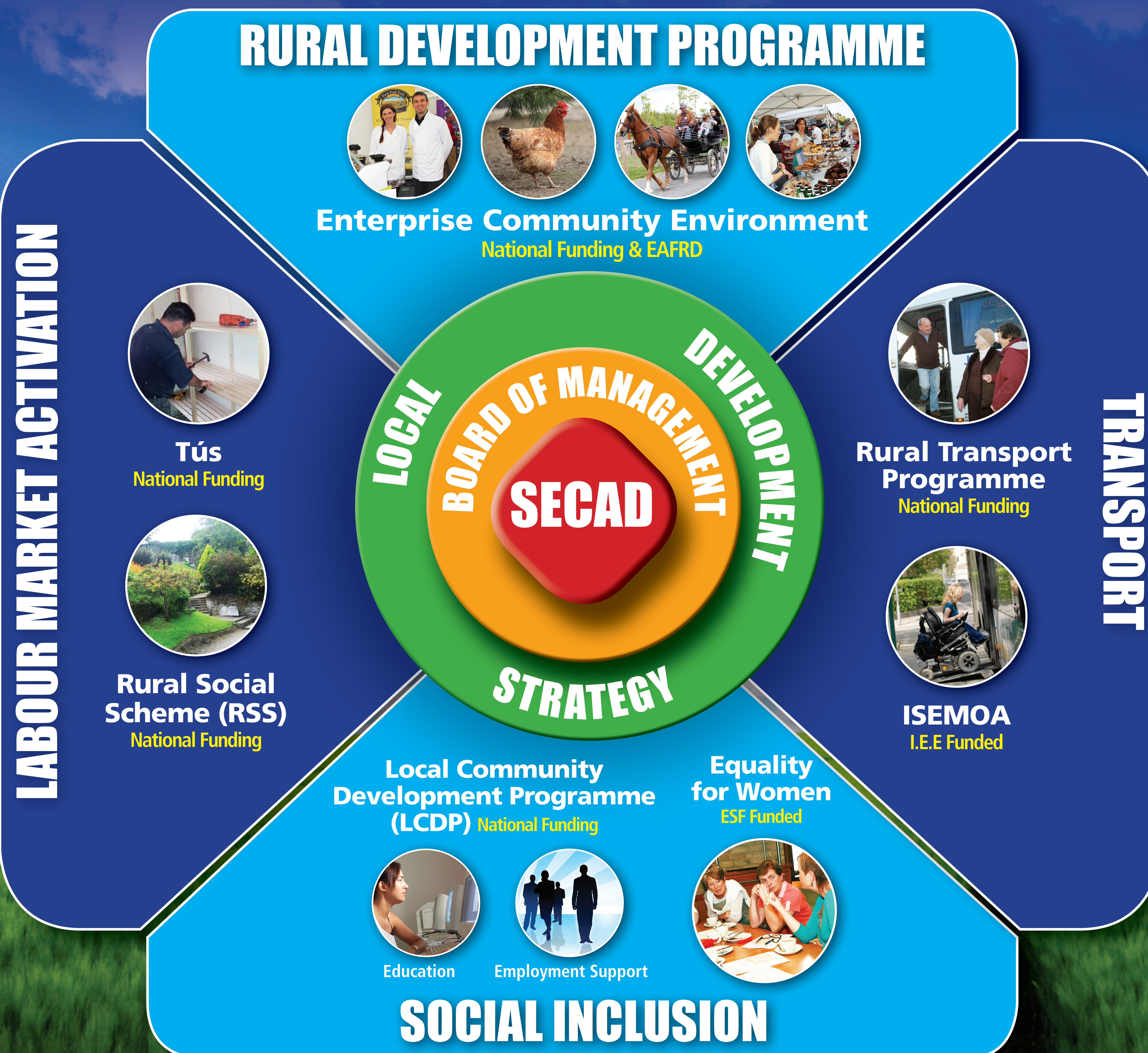
South and East Cork Area Development Ltd.
Midleton Community Enterprise Centre
Knockgriffin, Midleton, Co. Cork, Ireland

Contact Details:

Presenter: Ross Curley

email: rcurley@secad.ie

Tel: 00-353-21-4613432



OPPORTUNITIES

1. Integrated Strategic Planning
2. Broader Community Needs
3. Efficiency and Innovation
4. Common Strategic Framework

CHALLENGES

1. Dealing with:

An increasing level of inconsistent, unsupportive policies, rules and regulations being decreed by bureaucrats separately, fund by fund.

2. Develop and introduce:

A central Brussels led "Common Support Framework" which member states will adhere to for all LEADER type activity through Community Led Local Development. This must recognise the developmental and small scale nature of all LAG's.