

The Swedish Rural Network

2010 03 17-18

Hans-Olof Stålgren



Europeiska jordbruksfonden för
landsbygdsutveckling: Europa
investerar i landsbygdsområden





Europeiska jordbruksfonden för
landsbygdsutveckling: Europa
investerar i landsbygdsområden

NATIONAL RURAL
NETWORK

Sweden – a long coast line





Europeiska jordbruksfonden för
landsbygdsutveckling: Europa
investerar i landsbygdsområden

Swedish RDP

SEK 36,5 billion, aiming at:



Strengthening the competitiveness in farming and forestry

Protecting biodiversity

Preserving cultural heritage

Meet the climate challenges and develop renewable energy

Create new employment

Increase the number of enterprises with new products and services

Increase the number of visiting tourists

Village renewal and development

Better service and access to broadband



Europeiska jordbruksfonden för
landsbygdsutveckling: Europa
investerar i landsbygdsområden

A National Rural Network (NRN) in all EU member states

NATIONAL RURAL
NETWORK

The EU RDP article 68: Each Member State shall establish a national rural network, which groups the organisations and administrations involved in rural development.

In Sweden understood:

”...to bring together parties involved in or affected by the Rural Development Programme, through information activities, exchanges of experience.....
to improve its implementation and strengthen its potential for rural development. ... serve as
a national and transnational forum for wide-ranging exchange of information

to broaden dialogue on implementation at and between local, regional, national and international levels.”



Europeiska jordbruksfonden för
landsbygdsutveckling: Europa
investerar i landsbygdsområden

The purpose of the Swedish Rural Network

NATIONAL RURAL
NETWORK

The Rural
Development
Program

Axis 1

Axis 2

Axis 3

Axis 4 Leader

The aim of the network

Improve the implementation
Strengthen its potential for rural development

Type of activities

Exchange of information,
experience and methods

Broad dialogue
between local, regional,
national and inter-
national level

Exchanges
of experience between
rural development policy,
regional development
policy and environ-
mental policy



Europeiska jordbruksfonden för
landsbygdsutveckling: Europa
investerar i landsbygdsområden

A formal, official network

NATIONAL RURAL
NETWORK

Basic structure

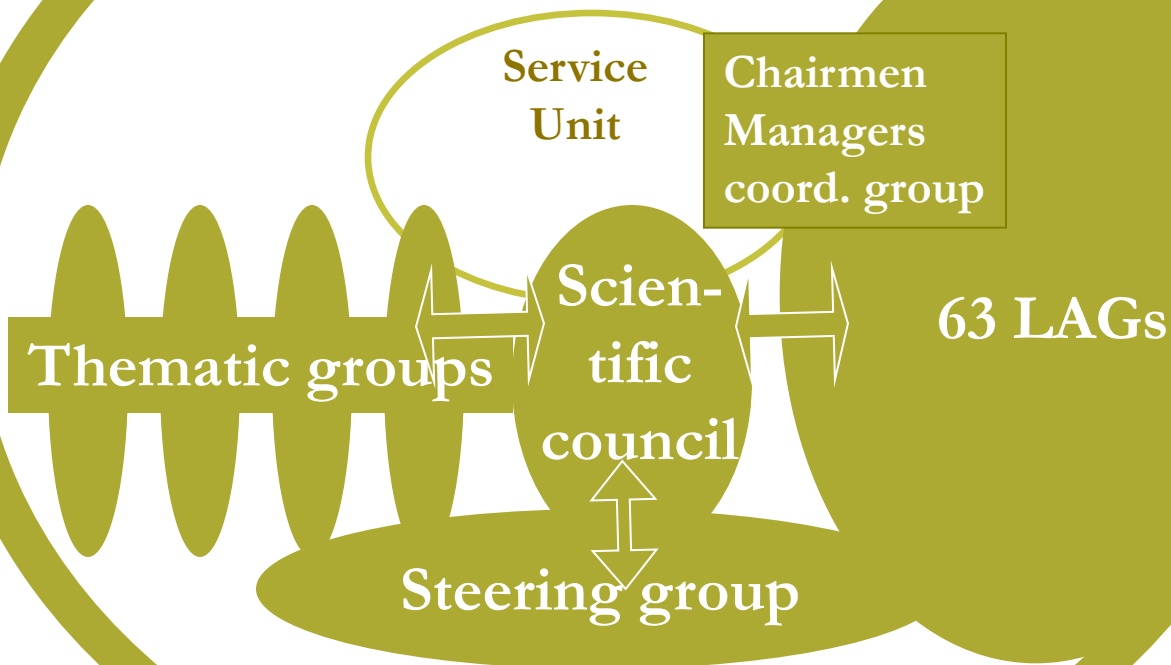
- Members:
All actors at national level working with rural development
- A Steering Committee of 11 members
- Network (service) Unit at the Managing Authority
- Activities driven by the members



Europeiska jordbruksfonden för
landsbygdsutveckling: Europa
investerar i landsbygdsområden

100 national actors and 63 LAGs

NATIONAL RURAL
NETWORK



Acting both together in
co-operation and individually



Europeiska jordbruksfonden för
landsbygdsutveckling: Europa
investerar i landsbygdsområden

Some of the member organisations

NATIONAL RURAL
NETWORK

Swedish Association for Breeding of Warm Blood Race Horses

National Federation of Community Halls

Swedish Biodiversity Centre

Farmers Union, LRF

Swedish mapping, cadastral and land registration authority (Lantmäteriet)

Ecological Farmers

Swedish Society for Nature Conservation

Swedish Board of Fishery

National Association All Sweden Shall Live (The village movement)

Swedish Federation of Rural Economy and Agricultural Societies, HUSH

Leader LAG:s

Swedish University of Agricultural Sciences

County Administrations

Association Young in Rural Areas

Royal Academy for Forestry and Agriculture

Many more



Europeiska jordbruksfonden för
landsbygdsutveckling: Europa
investerar i landsbygdsområden

Network activities

NATIONAL RURAL
NETWORK

- Yearly
 - 2 network conferences
 - 1 national Leader conference
 - 1 Rural Gala with awards for best practice
- Meetings with Leader managers and chairmen
- "Cheques" for member activities
- "Cheques" to LAGs for transnational cooperation
- Telephone Think Tanks
- Training and education
- Thematic working groups
- Animation activities for the RDP
- Support measures for LAGs
- Newsletter
- Web site



Europeiska jordbruksfonden för
landsbygdsutveckling: Europa
investerar i landsbygdsområden

Collecting and analysing experiences



➤ **”Think Tanks”:**

- The RDP implementation
- CAP post 2013
- Think tanks on demand
 - Local food processing
 - Entrepreneurship

➤ **Surveys**

- Regional partnerships
- Cooperation LAGs/County Adm
- Research ”shadows”
- Good practice – yearly Rural Best

➤ **Thematic working groups**

- Gender equality
- Integration
- Youth
- Community planning
- Environmental challenges
- Local risk capital





Europeiska jordbruksfonden för
landsbygdsutveckling: Europa
investerar i landsbygdsområden

Participation in international thematic groups



- Focus groups: Bottom up approach, Transnational co-operation....
- Relevant examples (success factors, innovations, transferability, sustainability, effectiveness)
- Forestry
- Social farming
- Rural Entrepreneurship
- EU Commission Thematic Working Groups



The aim of this conference is to establish an arena for researchers with an interest in the Nordic rural areas as an empirical field. For this purpose biennial conferences circulating between the Nordic countries are planned. The first conference will be held in the Stockholm-Uppsala region in Sweden in 3-5 May 2010 with the following sub themes:

- New understandings and use of nature and landscapes
- Flows of people, ideas and images
- Politics and policy

Deadlines are as follows:

Oct 15th	call for abstracts posted
Dec 15th	deadline for abstracts
Jan 15th	abstracts accepted/rejected
April 15th	deadline for papers

Registration to nrf@sol.slu.se no later than March 15th, 2010.

Keynote speakers include:

- Professor *em Ottar Brox*, Norwegian Institute for Urban and Regional Research
- Johannes Nergaard Frandsen*, Head of Department Institut for Litteratur, Kultur og Medier; University of Southern Denmark
- Professor *Katherine Gibson*, College of Asia and the Pacific, The Australian National University,
- Professor *Erik Westholm*, Institute for Future Studies, Stockholm

The conference is hosted by the Department for Urban and Rural Development, Swedish University of Agricultural Sciences and Swedish National Rural Network in collaboration.

Visit our conference website for more information and registration:

www.sol.slu.se/nrf

The planning committee for the conference includes:

- Cecilia Waldenström*, Assistant professor, Rural Development, Swedish University of Agricultural Sciences, Sweden
 - Ann-Kristin Ekman*, Professor in Rural Development, Swedish University of Agricultural Sciences, Sweden
 - Leif Berndtsson*, Research coordinator, Swedish National Rural Network
 - Lars Pettersson*, Ph.D., Swedish School of Agriculture and Livestock Production
 - Hilke Thines*, Professor of Rural Policy, MTT Agrifood Research Finland
 - Stina Powell*, Principal Research Scientist, MTT Agrifood Research Finland
 - Hanne Tanvig*, Senior researcher and adviser, Forest & Landscape, University of Copenhagen
 - Marit S. Haugen*, Research Manager, Centre for Rural Research, Trondheim, Norway
 - Karl Benediktsson*, Professor of Human Geography, Faculty of Life and Environmental Sciences, University of Iceland
- Conference coordinator is *Stina Powell*, Department of Urban and Rural Development, Swedish University of Agricultural Sciences. Stina.Powell@sol.slu.se

We look forward to receiving your submissions, and to meeting you in Sweden next year! Most welcome!



3-5 May 2010

DANSK FØRBA SØSKA TRAFIKKONTOR/STATIONEN • TRONDHEIM • NORGE



**Nordic Rural Futures:
pressures and possibilities
Research conference May 2010**

RURAL PARLIAMENT

S U N N E S W E D E N 6 - 9 M A Y 2 0 1 0

Don't miss!

NATIONAL RURAL
NETWORK

How do we develop the rural areas?
The Rural Parliament is Sweden's largest meeting place with dialogue, inspiration and exchange of experience.

The main purpose of the Rural Parliament is to motivate and inspire participants to start new rural projects and develop the countryside even more than today. The aim is to discuss the current "tool-box" (Rural development programme including Leader, national tools, other relevant EU-programmes). What kind of "tool-box" is needed after 2013?

We will look into the future – what will be the living conditions 2020? We will focus on three themes: transport, climate and energy. Researchers will describe scenarios for the future, 2020/2025, and their impact on the rural areas.

We will show the participants different rural projects that has been, and

still are, successful. There will be 10 seminars in English and 70 seminars in Swedish. The seminars and the visit to different rural projects will cover topics such as energy (water, wind, sun, biodiesel production) tourism, nature projects, culture, youth projects, integration etcetera.

5-9 of May

Where generations meet rural development happens!





Europeiska jordbruksfonden för
landsbygdsutveckling: Europa
investerar i landsbygdsområden



Thank you!

Please feel free to contact us at the Swedish Rural Network

first name.family name@jordbruksverket.se

www.landsbygdsnatverket.se

www.leaderplus.se



Europeiska jordbruksfonden för landsbygdsutveckling: Europa investerar i landsbygdsområden

www.landsbygdsnatverket.se

NATIONAL RURAL NETWORK

[Kontakt](#) | [Så fungerar webbplatsen](#) | [Anpassa](#) | [Webbkarta](#) | [In English](#)



[HEM](#) | [OM NÄTVERKET](#) | [AKTIVITETER](#) | [LEADER](#) | [OM LANDSBYGDSPROGRAMMET](#) | [LÄNKAR](#) | [PRESS](#)

landsbygdsnatverket | [In English](#)

Måndag 8 November 2010

Hem

- [Nyhetsbrev](#)
- [Prenumerationer](#)
- [A - Ö Lista](#)
- [Nyhetsarkiv](#)
- [Bevakning via RSS](#)
- [Inspirationsfilmer](#)
- [Twitter](#)
- [Landsbygdsprojekt](#)
- [Publiceringspolicy](#)
- [Grafisk profil](#)

Ange sökord

Information about the Swedish Rural Network

The Rural Network shall reinforce the implementation of the Swedish Rural Development Programme 2007-2013.

The Swedish Rural Network invite You to The Swedish Rural Gala 2010, 23:rd of November 2010. [More information](#)

[More information about the nominated here](#) (only in Swedish)

Contact information

Sofie Nordén, sofie.norden@jordbruksverket.se	Network Administration	+ 4636 15 50 98
Anna Lööv, anna.loov@jordbruksverket.se	Network cheques	+ 4636 15 60 63
Maria Gustafsson, maria.gustafsson@jordbruksverket.se	General network issues	+ 4636 15 51 04
Jessica Hagård, jessica.hagard@jordbruksverket.se	Webmaster, information officer	+ 4636 15 61 16
Hans-Olof Stålgren, hans-olof.stalgren@hush.se	International cooperation Method training	+ 46703 30 42 37
Nils Lagerroth, nils.lagerroth@hush.se	International cooperation Method training/ Network cheques	+ 46705 34 91 64
Suzanne Printzell, suzanne.printzell@jordbruksverket.se	Network administration	+ 4636 15 62 13

Further information

[About the Swedish Rural Network](#)

[Follow-up of the Swedish national Rural network 2007-2009](#)

[The nominated to the Swedish Rural Gala 2009](#)

[Leader in the Swedish Rural Network](#)

[Get the Swedish Rural Development Programme](#)

[Power Point about the Swedish Rural Network](#)

[Power Point from the 12th of May about the Swedish Rural Network](#)

[Activity Plan for the Swedish Rural Network 2009](#)



Europeiska jordbruksfonden för
landsbygdsutveckling: Europa
investerar i landsbygdsområden

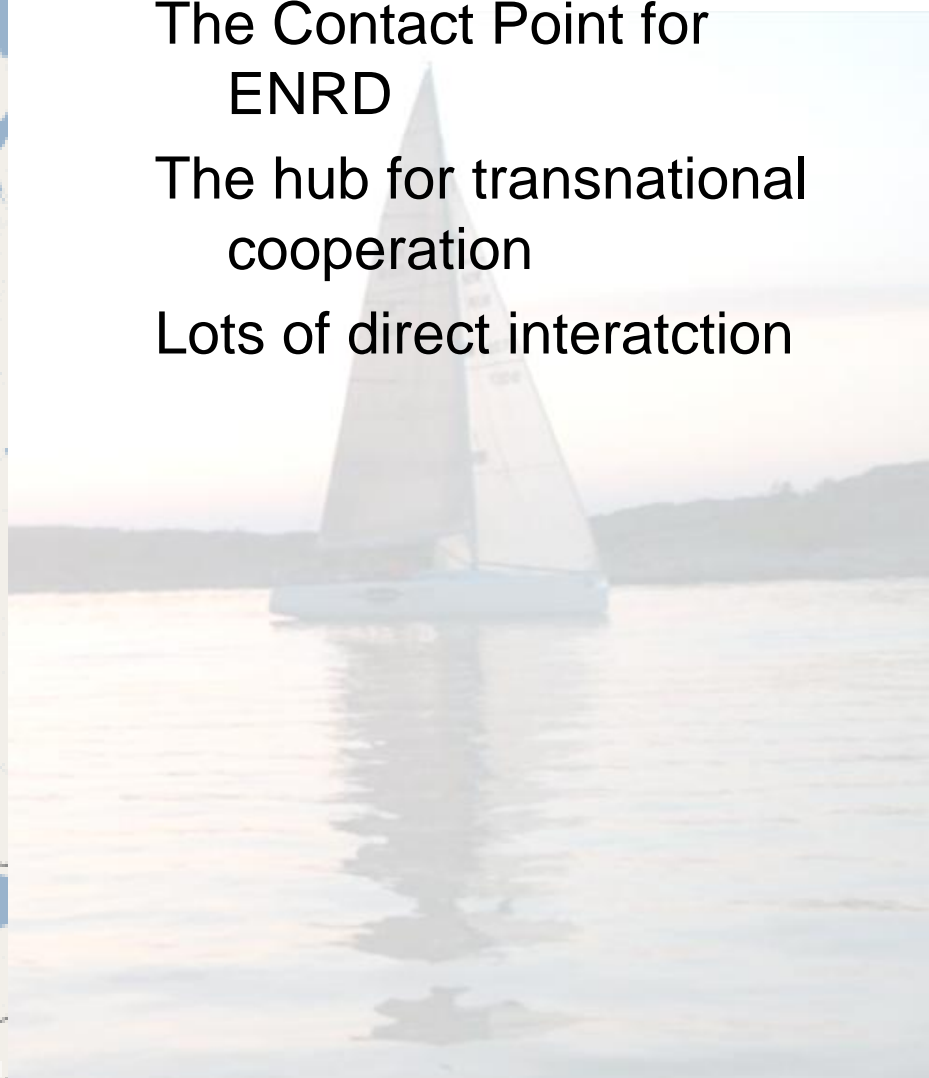
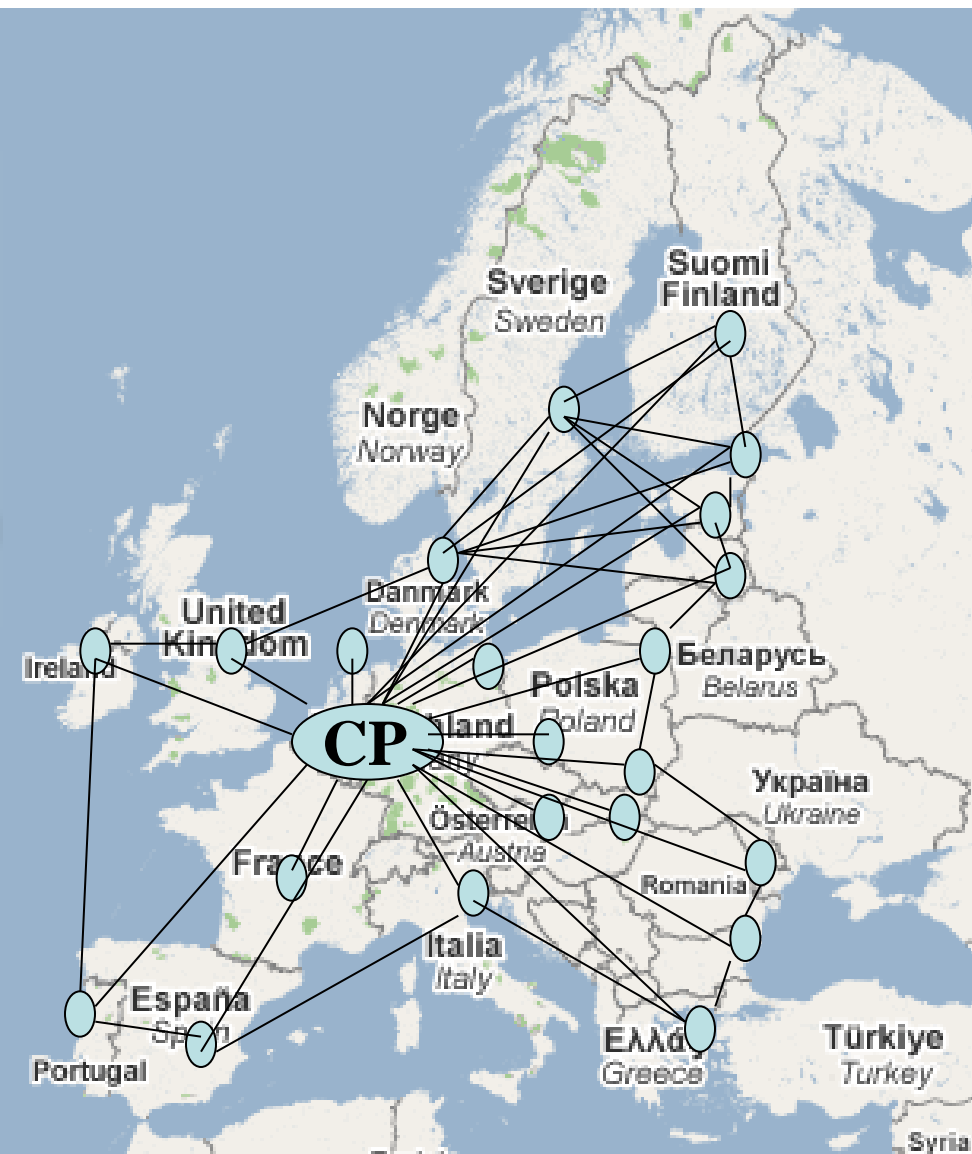
NATIONAL RURAL
NETWORK

International networking

The Contact Point for
ENRD

The hub for transnational
cooperation

Lots of direct interaction





Europeiska jordbruksfonden för
landsbygdsutveckling: Europa
investerar i landsbygdsområden

NATIONAL RURAL
NETWORK

Experiences from LEADER II and Leader+

Networking linked people and competences

Created capacity building

Created personal relations

Lifted good examples

Facilitated cooperation projects

Gathered and distributed information

Created a Competence Pool

Etc.....