

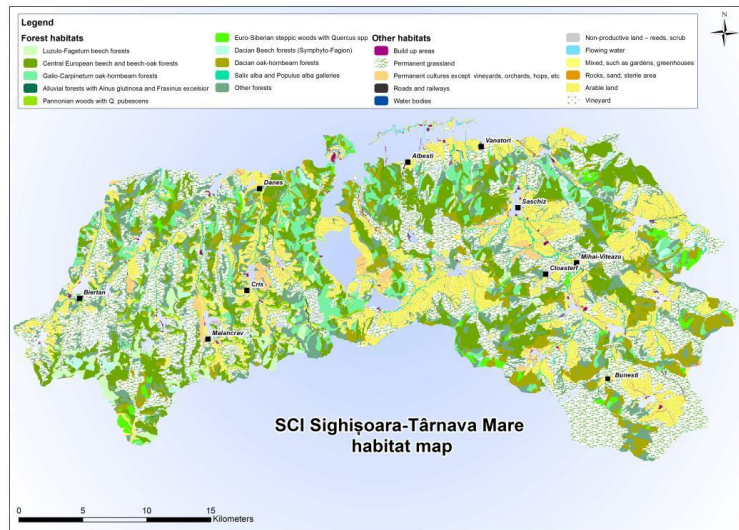
# ENRD thematic webinar

Local approaches that help disseminating environmentally sustainable practices in agriculture and other land management

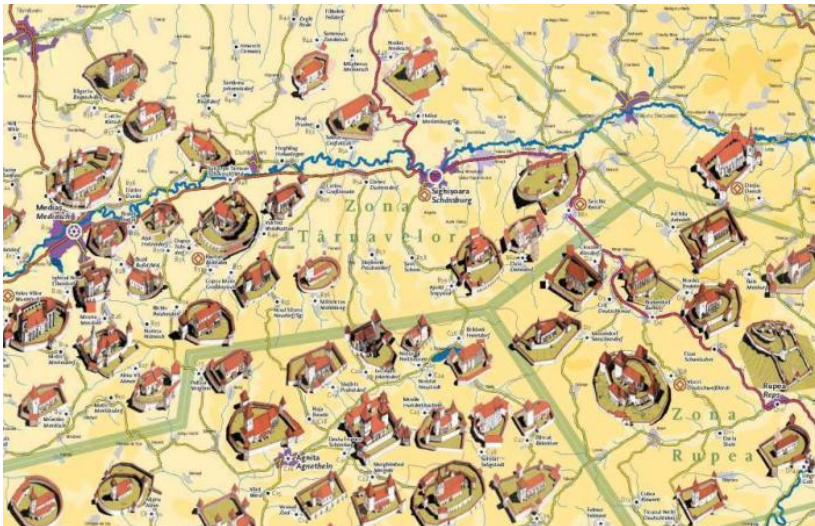


**Results-Based Payments for Biodiversity: A New Pilot Agri-Environment Scheme for the Tarnava Mare and Pogány Havas Regions**

# Identification of values, local practices, traditions, farmers needs etc



Natura 2000 site for species and habitats



Cultural landscape and traditional management

## ADEPT's Mission

*„To protect the High Nature Value Farmed Landscapes of Transylvania, working with and supporting the small-scale farming communities that created them.”*

..a romantic view of these landscape is not enough

We need a integrated, science and market-based approach in the advisory service.

# High biodiversity conservation needs informed farmers and "sexy" AE measures that are responding to detailed biodiversity needs

Tab. 2: Some EU Habitats Directive habitats typically found in Romania's HNV farmland areas

Code	Name
40A0*	Sub-continental Peripannonic scrub
6210*	Semi-natural dry grasslands and scrubland facies on calcareous substrates ( <i>Festuco-Brometalia</i> ) with important orchid sites
6230*	Mountain pastures with <i>Nardus</i>
6240*	Sub-Pannonic steppic grasslands
62C0*	Ponto-sarmatic steppes
6410	Molinea meadows
6430	Hydrophilous tall herb fringe communities of plains and of the montane to alpine levels
6510	Lowland hay meadows ( <i>Alopecurus pratensis</i> , <i>Sanguisorba officinalis</i> )
6520	Mountain hay meadows

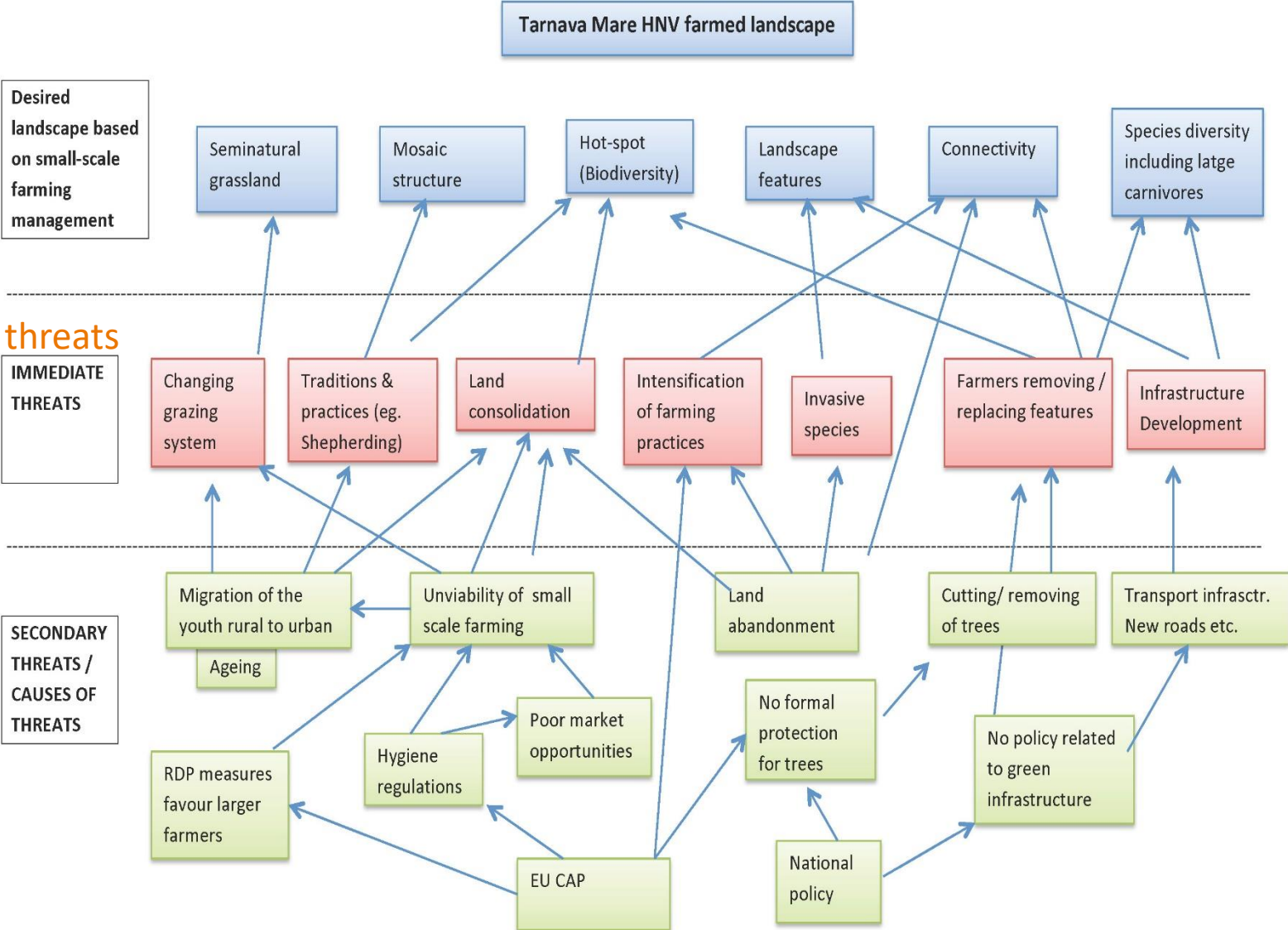
Tab. 4: Some EU Birds Directive species typically found in Romania's HNV farmland areas

Species	Species
<i>Aquila pomarina</i> (lesser spotted eagle)	<i>Crex crex</i> (corncrake)
<i>Aquila chrysaetos</i> (golden eagle)	<i>Picus canus</i> (grey-headed woodpecker)
<i>Circus golicus</i> (short-toed eagle)	<i>Lanius collurio</i> (red-backed shrike)
<i>Circus aeruginosus</i> (western marsh harrier)	<i>Lanius minor</i> (lesser grey shrike)
<i>Circus cyaneus</i> (hen harrier)	<i>Lullula arborea</i> (woodlark)
<i>Falco tinnunculus</i> (red-footed falcon)	<i>Anthus campestris</i> (tawny pipit)
<i>Pernis ptilorhynchus</i> (European honey buzzard)	<i>Coprimolagus europaeus</i> (European nightjar)
<i>Bubo bubo</i> (Eurasian eagle owl)	<i>Tringa glareola</i> (wood sandpiper)
<i>Ciconia ciconia</i> (white stork)	<i>Philomachus pugnax</i> (ruff)
<i>Ciconia nigra</i> (black stork)	<i>Branta ruficollis</i> (red-breasted goose)

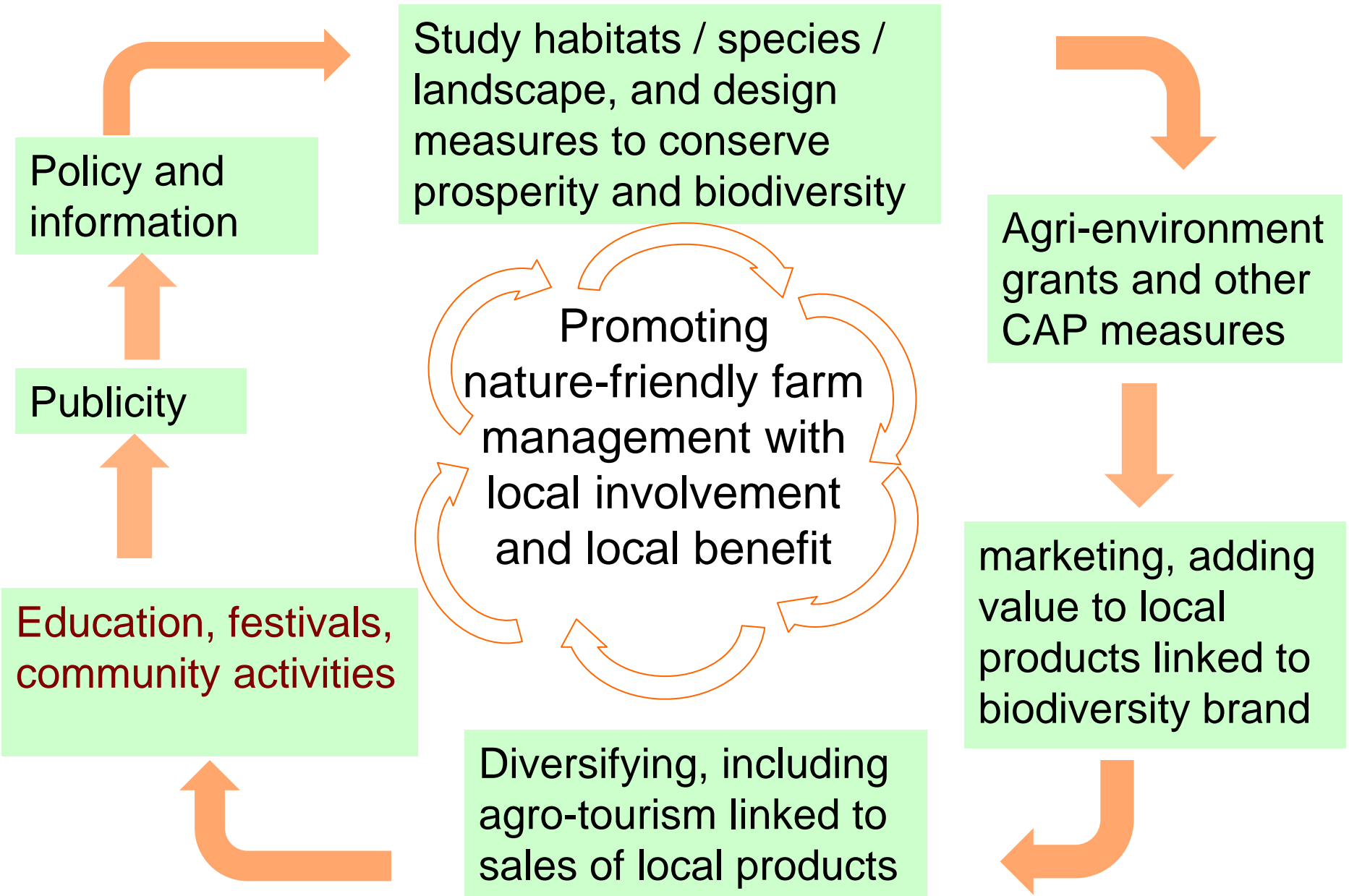
Tab. 3: Some EU Habitats Directive and Berne Convention animal and plant species typically found in Romania's HNV farmland areas

Group	Species	Group	Species	
Plants	<i>Echium russicum</i>	Lepidoptera	<i>Callimorpha quadripunctaria</i> (Jersey tiger moth)*	
	<i>Crambe tataria</i>		<i>Catopta thrips</i>	
	<i>Cypripedium calceolus</i>		<i>Eriogaster catax</i>	
	<i>Angelica palustris</i>		<i>Euphydryas aurinia</i> (marsh fritillary)	
	<i>Iris aphylla</i>		<i>Euphydryas maturna</i> (scarce fritillary)	
	<i>Adenophora liliifolia</i>		<i>Leptidea morsei</i> (Fenton's wood white)	
Also:	<i>Cephalaria radiata</i> (endemic)		<i>Lycaena dispar</i> (large copper)	
	<i>Salvia transsylvanica</i> (end.)		<i>Maculinea teleius</i> (scarce large blue).	
Mammals	<i>Ursus arctos</i> *		<b>Lepidoptera species protected under Berne Convention</b>	
	<i>Lutra lutra</i>		<i>Proserpinus proserpina</i>	
	<i>Myotis myotis</i>	<i>Maculinea arion</i> (large blue)		
	<i>Barbastella barbastellus</i>	<i>Aricia eumedon</i> (geranium argus)		
Reptiles	<i>Lacerta agilis</i>	<i>Brenthis ino</i> (lesser marbled fritillary)		
	<i>Natrix natrix</i>	<i>Brenthis daphne</i> (marbled fritillary)		
	<i>Emys orbicularis</i>	<i>Brenthis euphrosyne</i> (pearl bordered fritillary)		
Amphibia	<i>Triturus cristatus</i>	<i>Lycaena alciphron</i> (purple shot copper)		
	<i>Rana dalmatina</i>	<i>Lycaena helle</i> (violet copper)		
	<i>Bombina variegata</i>	<i>Maculinea alcon</i> (alcon blue)		
	<i>Rana temporaria</i>	<i>Plebeius argus</i> (silver studded blue).		

# Threats identification

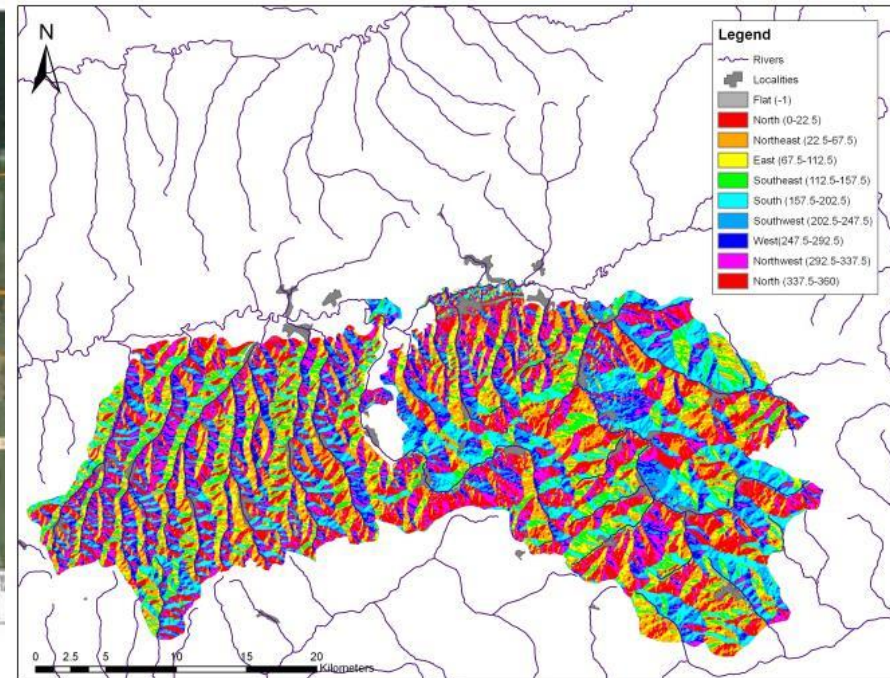


# Interdisciplinary approach



# Lobby and technical/science based proposals

- Active participation in the technical WG (ministry of environment and ministry of agriculture),
- Member in the Monitoring Committee),
- Access to scientific data and scientific community,
- Coalition with other NGO's and if possible farmers associations,
- Involvement in the National Rural Network,
- GIS specialist/knowledge,
- Use same methodology as the Ministry developing AEW measures,
- Consultation with local authorities etc



## Example: Policy development

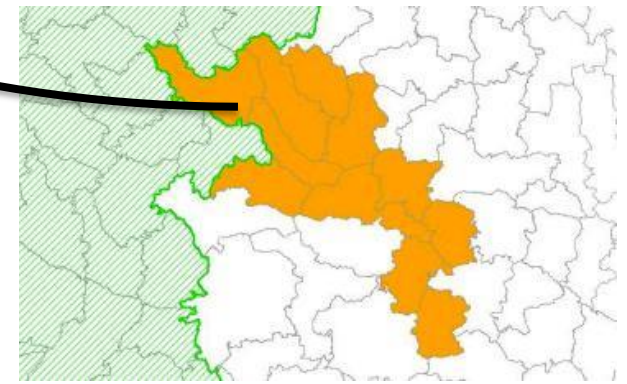
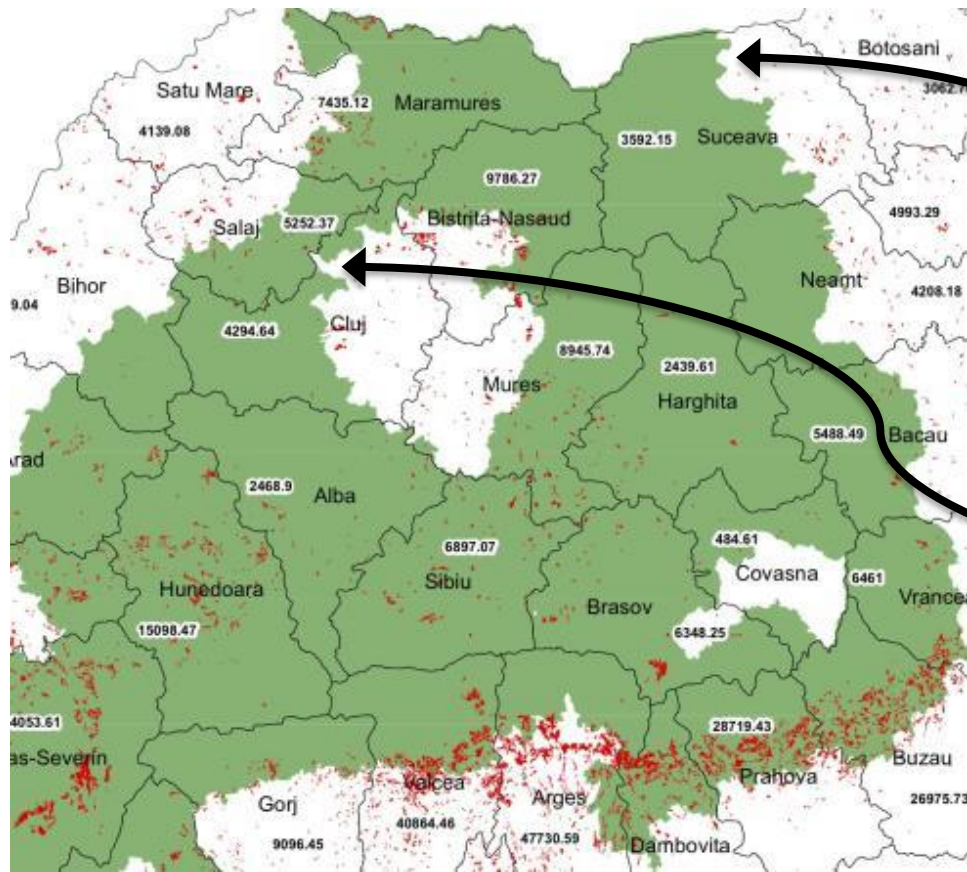
Developing new agri-environment payments for small-scale farmers at national level

Working directly with the Ministry of Agriculture, we have successfully proposed new agri-environment measures effective from 2012.

Impact: additional payments for HNV farmers (assuming 30% uptake):

➤ 195.000 ha of extensive orchards now eligible throughout HNV area

➤ Additional 26 communes in Cluj and Bucovina



# Designing a results-based agri-environment payment scheme for Southern Transylvania

**Until now:** management-based AES → e.g. mowing dates

**RBAPS** : payments for desired result

→ more freedom for farmers

→ more adaptable to local conditions (wet year/dry year, aspect of slope, altitude, etc.)





# Pros and cons of RBAPS



- **Clear link** between payment and biodiversity objective
- “**production**” of biodiversity becomes part of farming system
- Farmers are rewarded for their **entrepreneurial effort**
- Greater **public recognition** of farmer’s role in maintaining biodiversity



- In some cases it is **not possible to design indicators** of biodiversity results
- **Managing authority** does not always have **access** to expertise to set up a RBAPS
- **Farmers must be willing** to accept a results-based approach

# The Romania pilot scheme 2015-2018

**90 ha contracted** in each region (continental and mountain)

Target: **Hay meadows** of High Nature Value

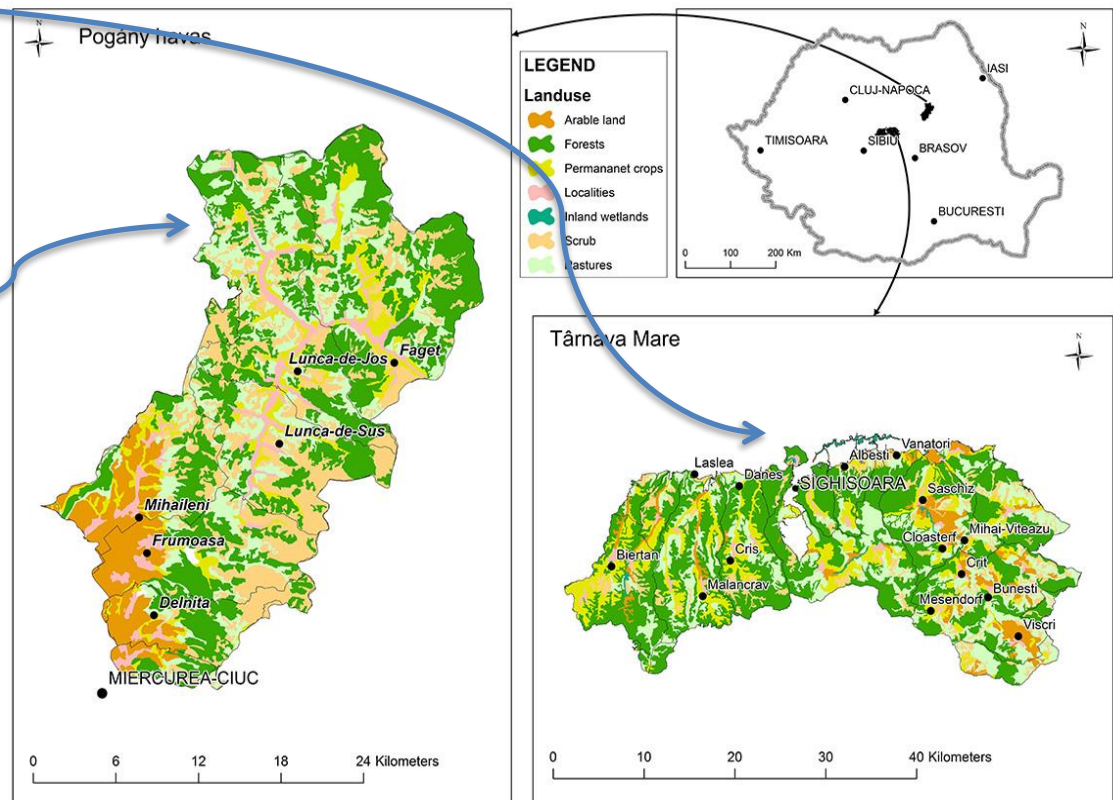
## Târnava Mare:

approx. 85,000 ha, 350-700 m altitude:  
Continental b-g region

## Pogány-havas (Muntii Ciucului):

approx. 60,000 ha, 650-1500 m altitude: alpine b-g region

→ HNV, Natura 2000,  
good relations between  
project partners and  
farmers



## 30 indicator species for TM & PH



*Primula spec.*



*Trollius europaeus*



*Orchidaceae spec.*

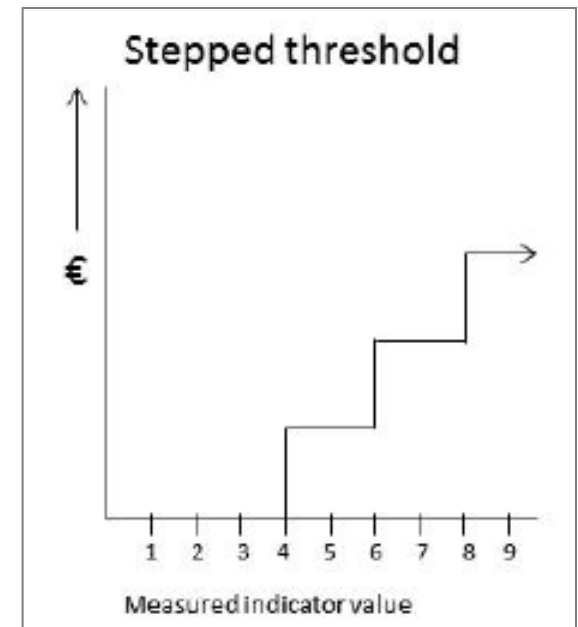
- Same list for two regions
- Easily to recognize
- Species groups to avoid confusion
- Flowering in spring-summer
- Indicators for wet, mesic & dry meadows
- Only grow at **low intensity hay meadows**
- Are associated with **high plant & animal species richness**
- **Are not rare**
- **Are sensitive to change in management**

# Payment levels

- 3 payment levels calculated with methodology (income foregone) agreed by Managing Authority:
  - **5 species: €213 / ha / year**
  - **8 species: €229 / ha / year**
  - **10 species: €259 / ha / year**

Contract holders...

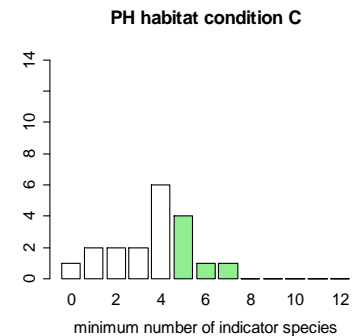
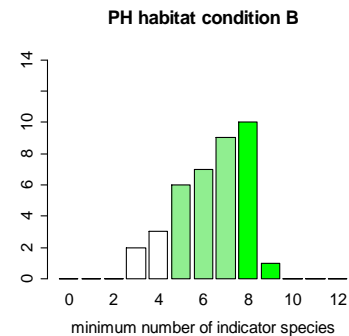
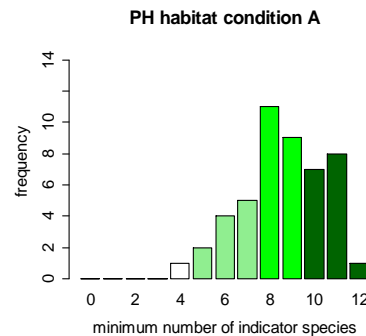
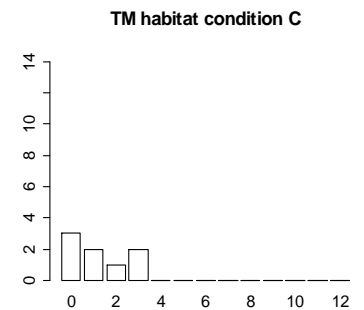
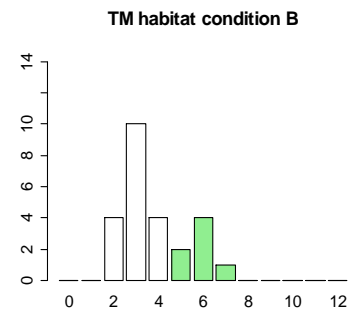
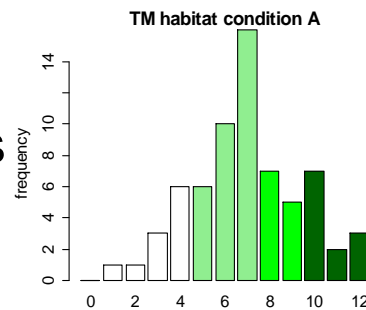
- cannot step down during contract period
- are incentivised to manage in a way to step up to get higher payment rates



# Why these levels?

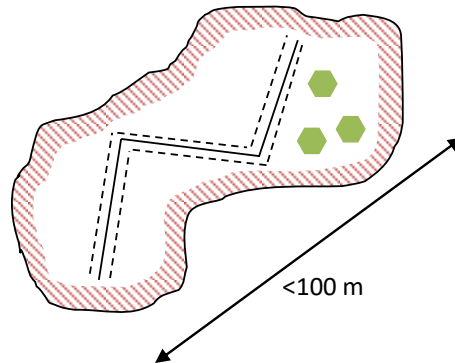
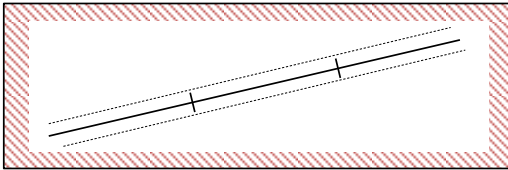
Number of transects achieving the different indicator species levels according to habitat conditions status.

A = favourable  
B = unfavourable – insufficient  
C = unfavourable – bad



# Indicator recording method

- Used by farmers AND payment agencies



Number of species per transect section

5	7	5	✓
6	4	5	✗
11	8	10	✓

## Results

- Farmers are interested and like the flexibility of the scheme
    - 56 farmers, 98.95 ha, 155 parcels in Pogany-Havas
    - 17 farmers, 72.91 ha, 48 parcels in T. Mare
    - more suitable land offered: limited by budget, not availability of suitable land
  - Farmers already recognize many of the species
- Further information needed to assist self-assessment: training, guidance booklets



## Next steps

- Working closely with Managing Authority and Paying Agency makes integration into national policy post 2023 more possible?
- Possible use as an option for Natura 2000 areas?



## For further information



**Results-based Payments for  
Biodiversity**  
**Guidance Handbook**  
Designing and implementing  
results-based agri-environment  
schemes 2014-2020



Environment



**SUMMARY**  
of  
**Results-based Payments for  
Biodiversity**  
**Guidance Handbook**  
Designing and implementing  
results-based agri-environment schemes  
2014-2020



Environment

[http://ec.europa.eu/environment/nature/rbaps/handbook/index\\_en.htm](http://ec.europa.eu/environment/nature/rbaps/handbook/index_en.htm)

# Fundatia ADEPT seeks to promote links between biodiversity conservation continued traditional land management, and local incomes on scientific basis



## **Acknowledgments:**

Laura Sutcliffe, Rainer Oppermann, IFAB  
Clunie Keenleyside, Graham Tucker IEEP  
Mihai Constantinescu, Andrei Balan, MADR

Thank you!

[www.fundatia-adept.org](http://www.fundatia-adept.org)