



Main messages from Horizon 2020 projects for the Vision

Alexia ROUBY – European Commission DG AGRI
Research and innovation

*ENRD Thematic group #Rural2040
22-23 September 2020*



Vision for rural areas

Flow

- A quick look backwards
- H2020: what's at hand?
- Looking ahead: main messages

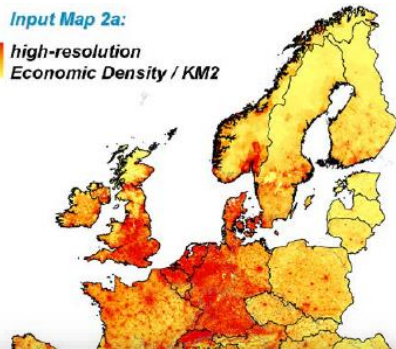
Looking back - Rural diversity



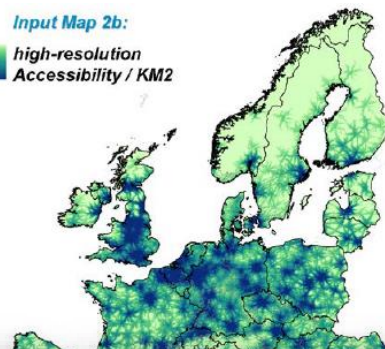
Faro.eu

Foresight Analysis of Rural areas Of Europe

Input Map 2a:
high-resolution
Economic Density / KM2



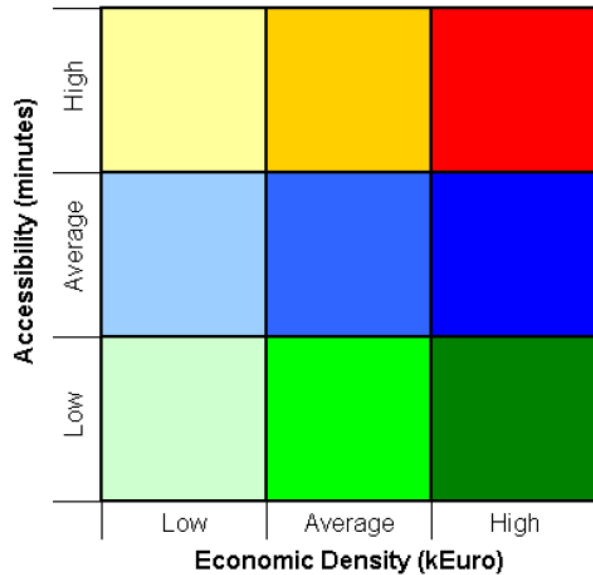
Input Map 2b:
high-resolution
Accessibility / KM2



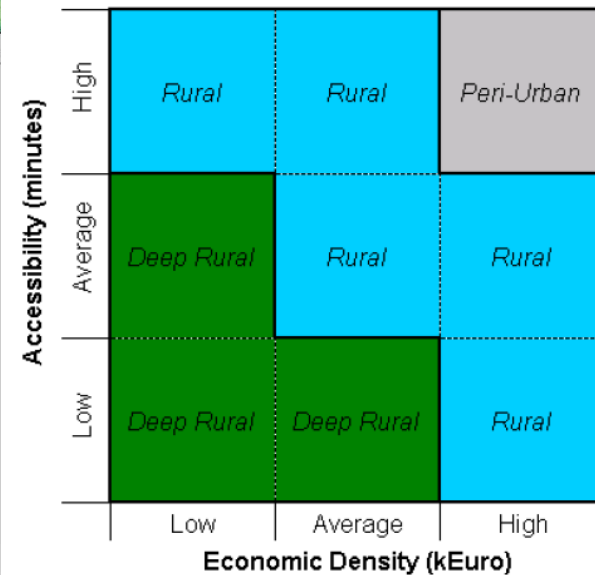
Input Map 1:
Environmental Zones



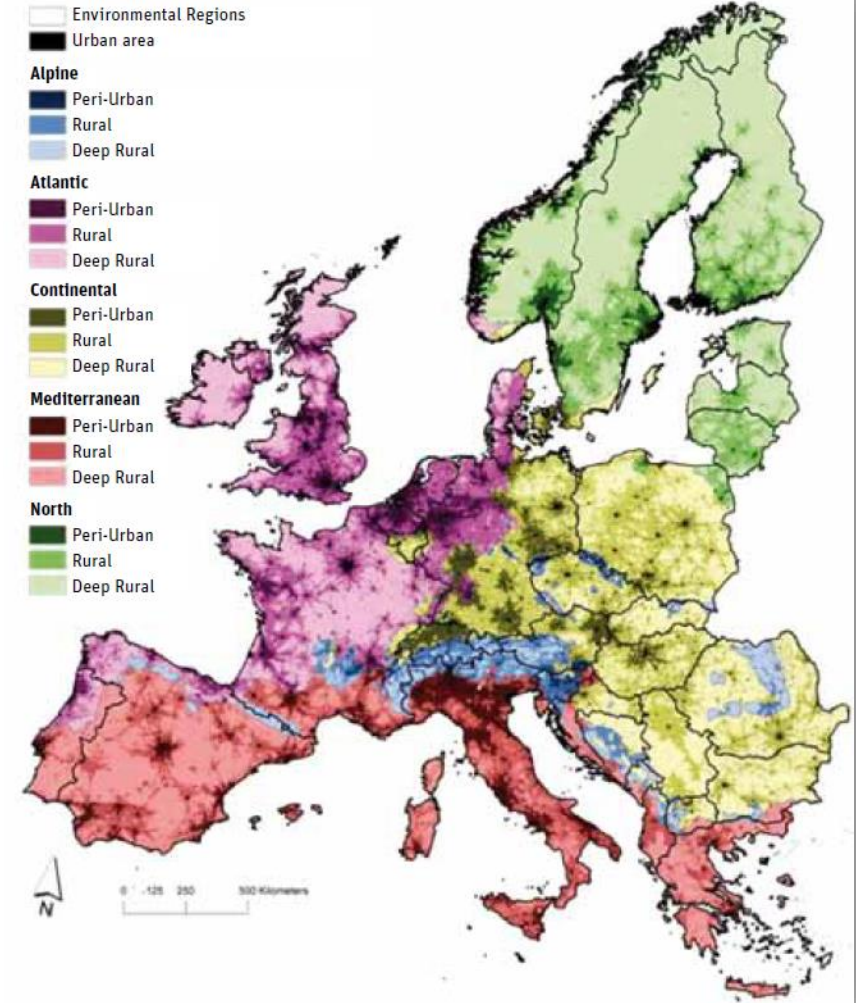
Environmental Zone



Environmental Zone



- Environmental Regions
- Urban area
- Alpine**
 - Peri-Urban
 - Rural
 - Deep Rural
- Atlantic**
 - Peri-Urban
 - Rural
 - Deep Rural
- Continental**
 - Peri-Urban
 - Rural
 - Deep Rural
- Mediterranean**
 - Peri-Urban
 - Rural
 - Deep Rural
- North**
 - Peri-Urban
 - Rural
 - Deep Rural



Looking back – trends and issues



Foresight Analysis of Rural areas Of Europe

- Main trends identified:
 - **Demography**: variable across regions and rural classes, ageing and migration as main issues
 - **Employment**: farm employment low everywhere
 - **Land-use**: farm area decline in peri-urban mostly
 - **Economic diversification**: more diversification in rural and deep rural than peri-urban
 - **Energy** crisis, loss of landscapes, **quality of life** and **climate** and **land-use change** already identified as pressing issues
- Main findings:
 - Trends analysis: « **There is no unified declining trend in rural areas** »
 - Scenarios with policy as main driver « **Non-agricultural trends in rural areas appear more relevant in shaping rural futures than agricultural processes** »

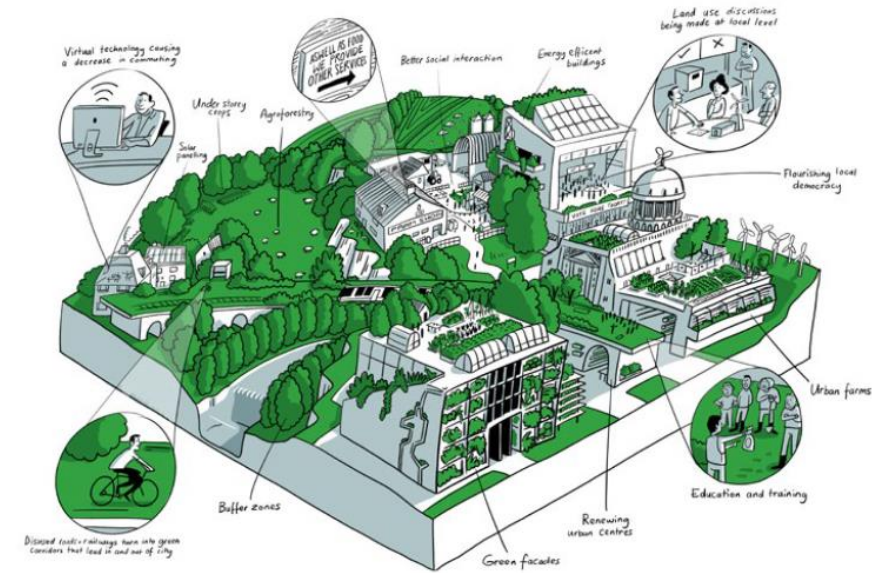
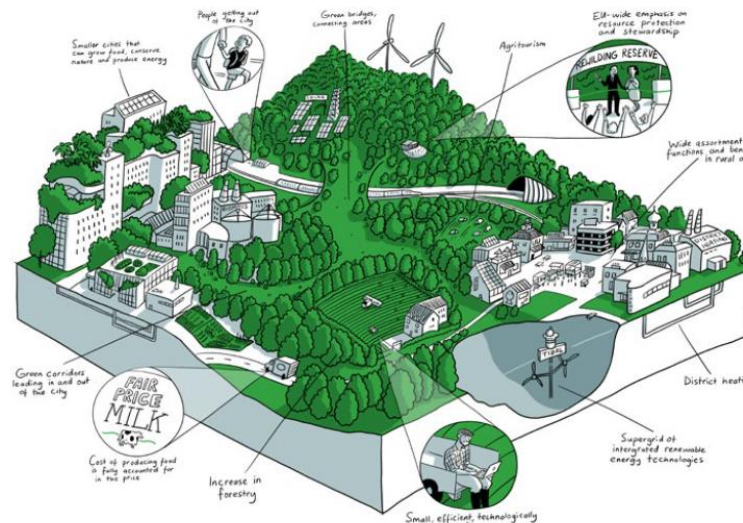
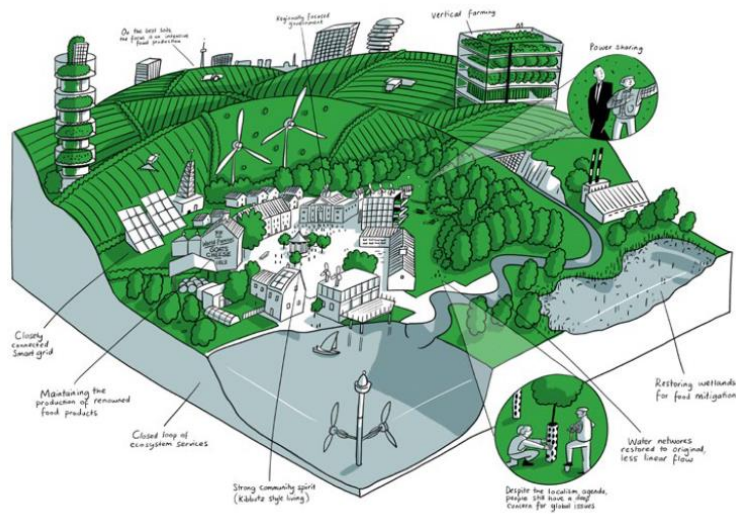
Looking back

Land-use scenarios for 2040



VISIONS OF LAND USE TRANSITIONS IN EUROPE

VOLANTE



Best land in Europe
 Maximise land-use efficiency at EU level, increased specialisation

Severe rural decline

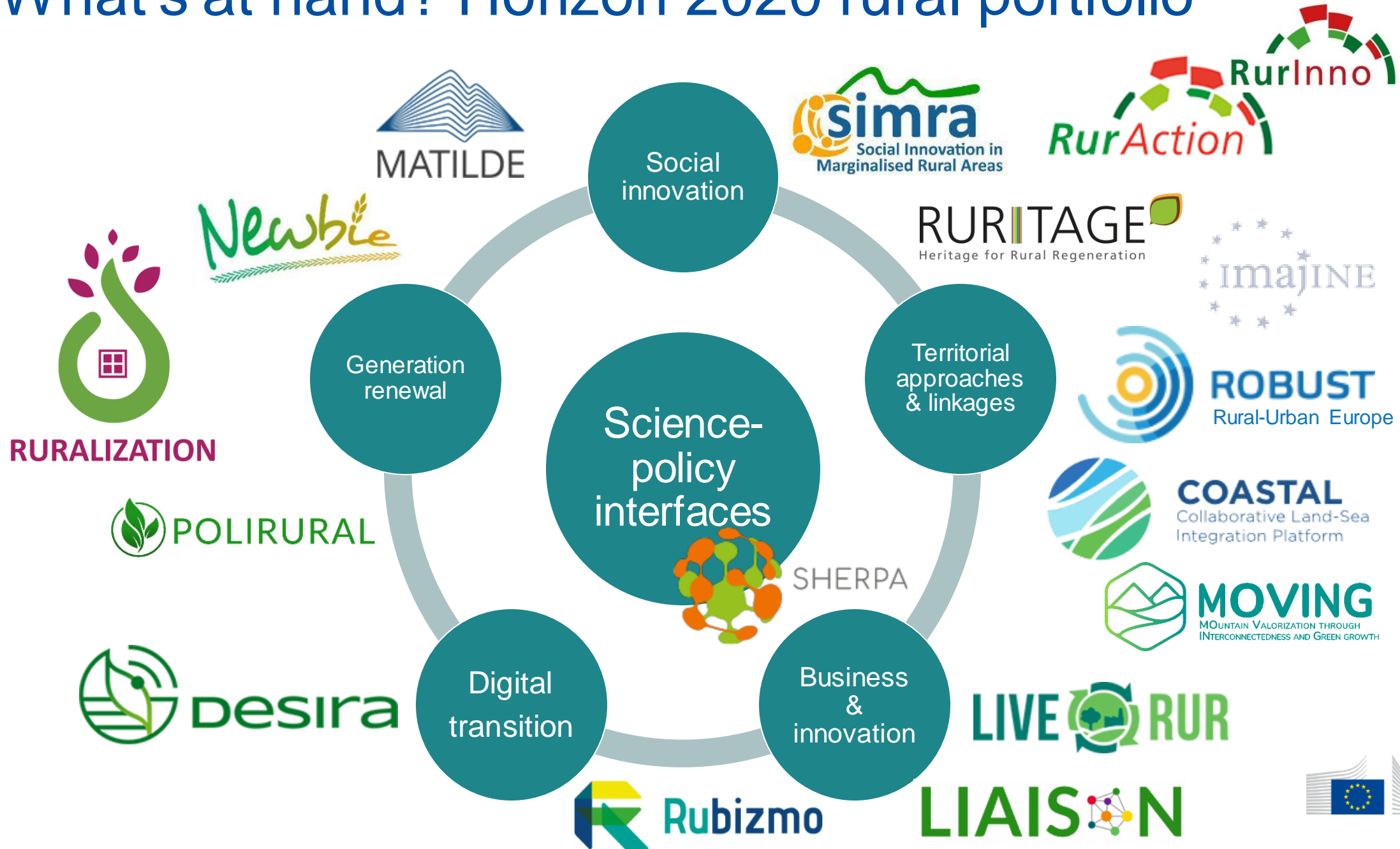
Regional connected
 Societal needs are met regionally
 No need for globalisation

Rural areas connected to cities
Regional coherence

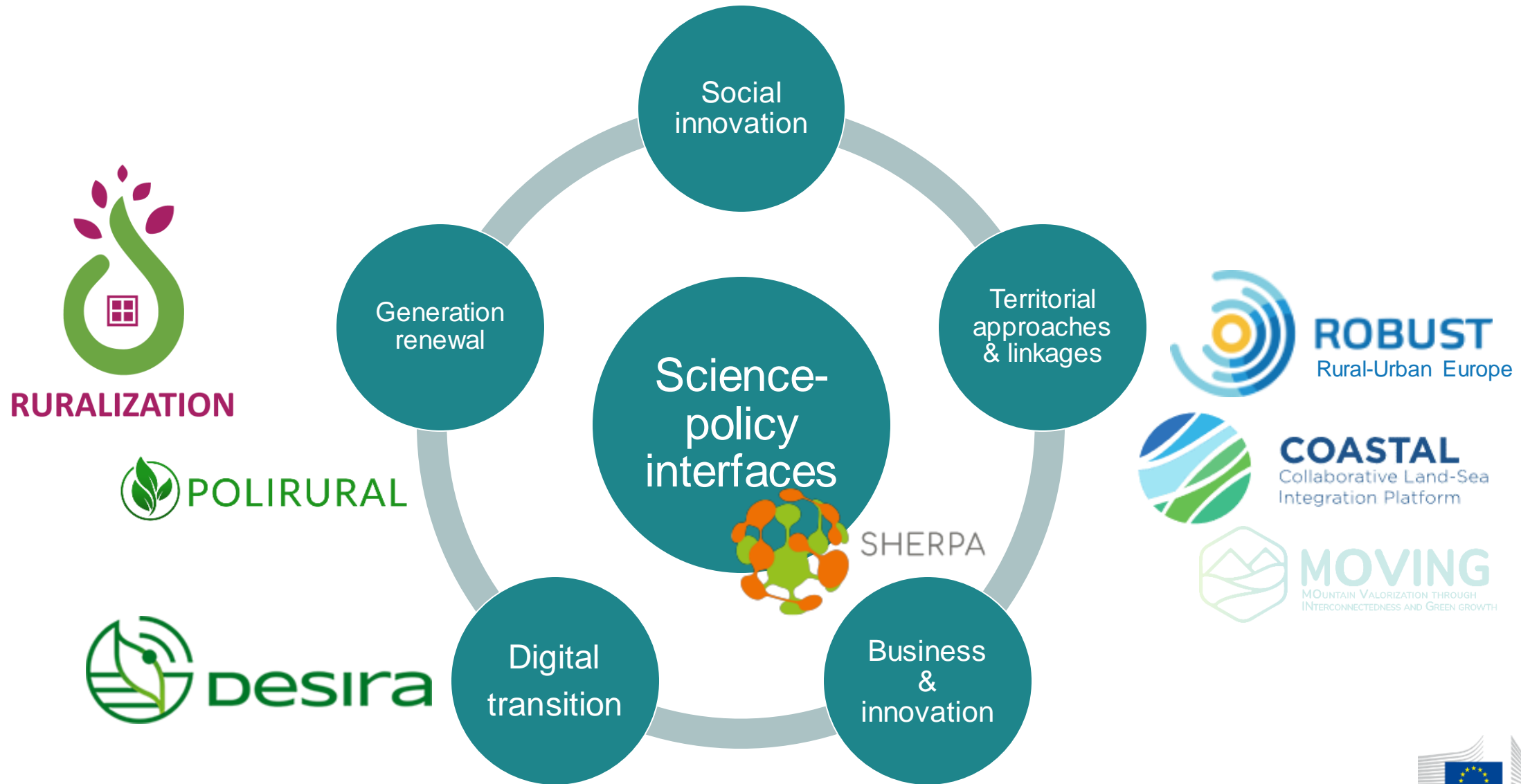
Local multifunctional
 Multifunctionality at local/field scale - diversification

Thriving, diversified rural areas attracting newcomers

What's at hand? Horizon 2020 rural portfolio



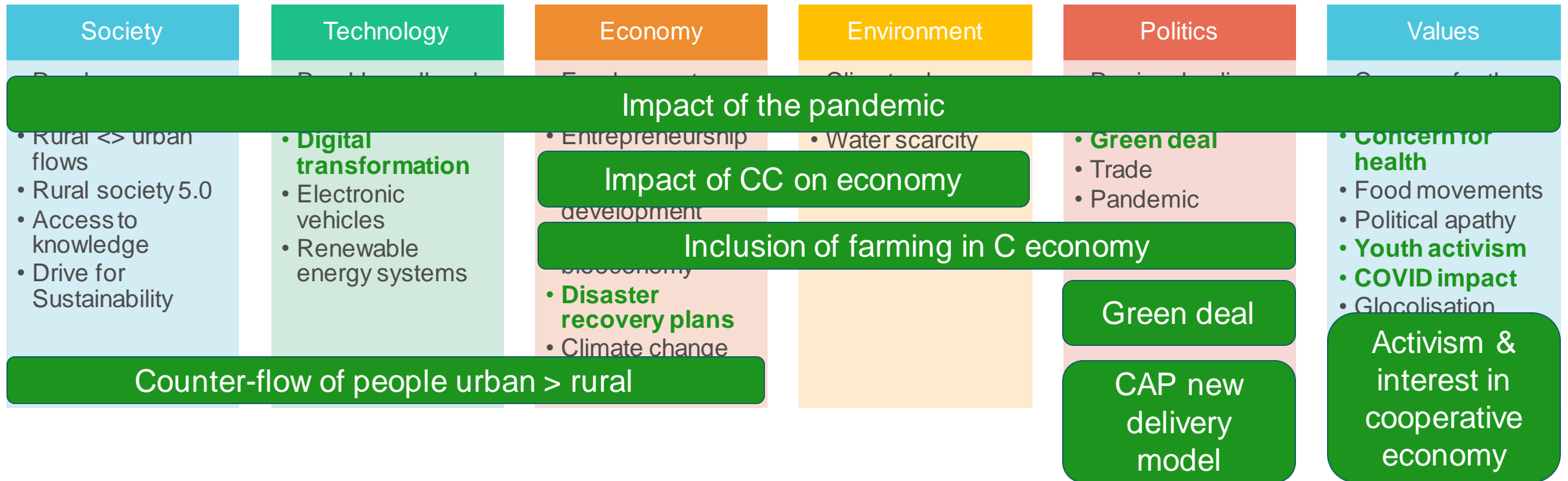
What's at hand? Foresight



POLIRURAL – STEEPV drivers



- STEEPV drivers of change: Examples



SHERPA

Foresight review - Scenarios



Scenario	Project	Description
Enabling	SALSA	Thriving rural communities with high numbers of small farmers and small food business
European Localism	Volante	Agriculture more regionalised and less specialised. Multifunctional landscapes as key elements.
Local Sustainability	SoilCare	A large part of the agricultural sector transforming into a more boutique style of farming with a regional focus , and a reduction in food imports from across the world. Not everyone can afford the premium prices of high-quality food.
The price of health	Transmango	Europeans returning to rural lives , encouraged by improved communication technologies
Clustered networks	LEI Wageningen	Migration away from polluted urban areas is encouraged. Medium-sized cities outside the main urban centre are encouraged.
Lattuce surprises U	LEI Wageningen	Environmental awareness grows , as does demand for sustainably produced food. Agriculture in core production regions becomes more tech, clean and relatively small scale.
Caring and sharing	SoilCare	Widespread societal awareness that an urgent change in food production is needed. Strong, visionary leaders step up and propose changes

Localism?

Counter-flow of people urban > rural

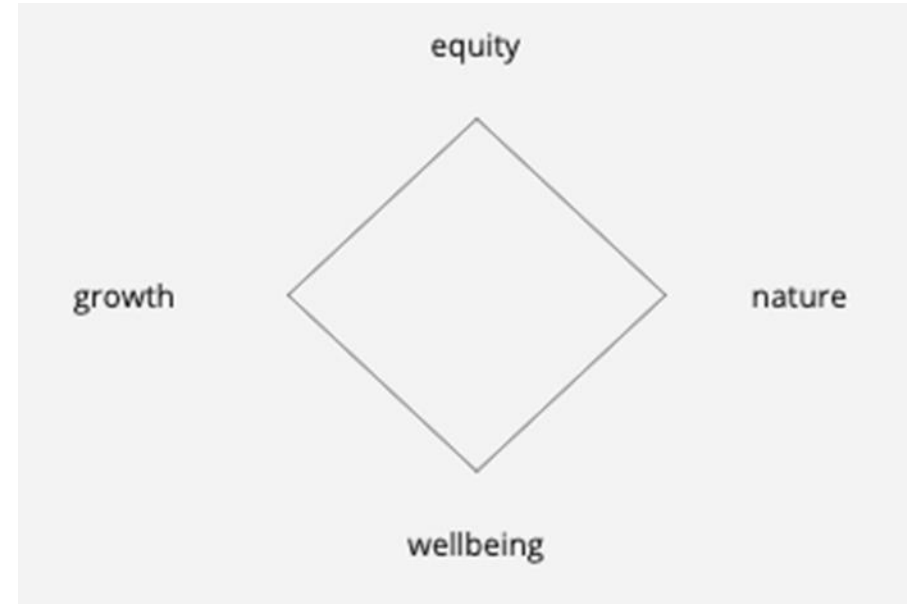
Activism & interest in cooperative economy

SHERPA

Foresight review - Trends



- Most relevant trends for rural:
 - **Demography**: ageing + migration
 - Global **shifts in production**
 - Rise of **emerging economies**
 - **Technological breakthroughs**
 - **Climate change and environmental pressures**
 - **Environmental** adjustments
 - Rural **policies**
 - **Taxation**



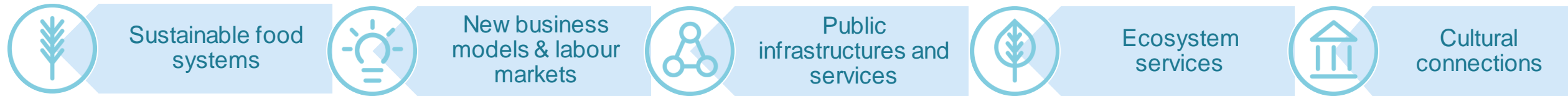
- Rural diversity → scenario relevance depends on remoteness/local conditions
- Rural-urban linkages are key

Rural-urban Europe (ROBUST)

Towards new rural-urban alliances?



5 functional linkages



→ Innovation trends that could benefit rural-urban synergies

- Proximity economy
- Circular economy
- New governance arrangements for natural resources
- Territorial governance
- Public services
- Heritage-led tourism

Sustainable well-being economy



COVID impacts + & -

Some personal highlights...

- **Demography** looks central to all projects: **ageing** and **decline** but also **return to rural areas/lifestyle migration** → is a ruralisation wave plausible?
- The rise of a **new type of economy/society** backed by **strong social and environmental values** with **well-being as objective** → Plausible by 2040?
- Globalisation vs localism?
- The **breadth and pace of technological change** looks central → can rural areas benefit?
- A new **rural-urban alliance** could materialise
- Activism & democracy as important drivers that were not so prominent before

Thank you



© European Union 2020

Unless otherwise noted the reuse of this presentation is authorised under the [CC BY 4.0](https://creativecommons.org/licenses/by/4.0/) license. For any use or reproduction of elements that are not owned by the EU, permission may need to be sought directly from the respective right holders.

Slide xx: [element concerned](#), source: [e.g. Fotolia.com](#); Slide xx: [element concerned](#), source: [e.g. iStock.com](#)

