

MAMBA

Mobility • Accessibility • Innovation

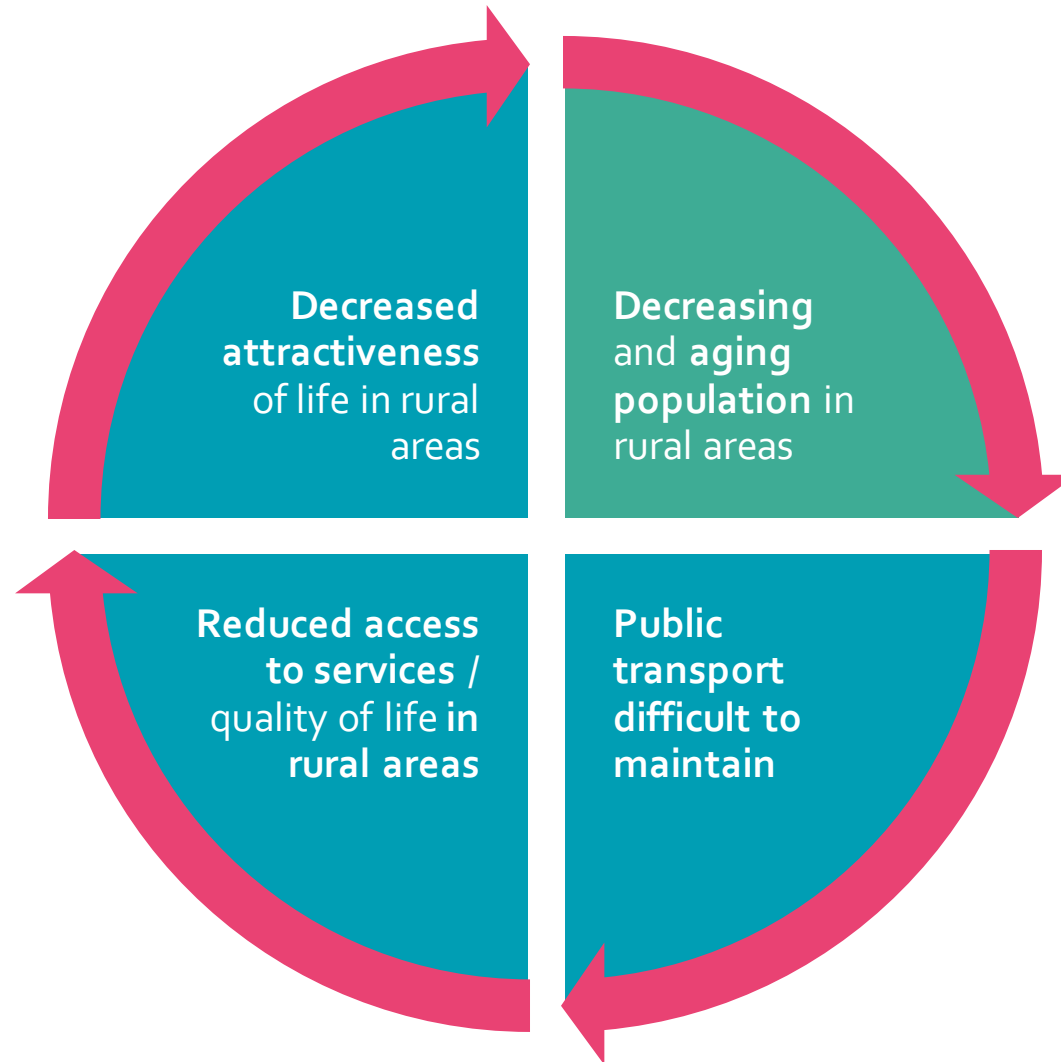
June 2020, ENRD Workshop on Vibrant Rural Areas: Access to Services

Linda Randall
Nordregio

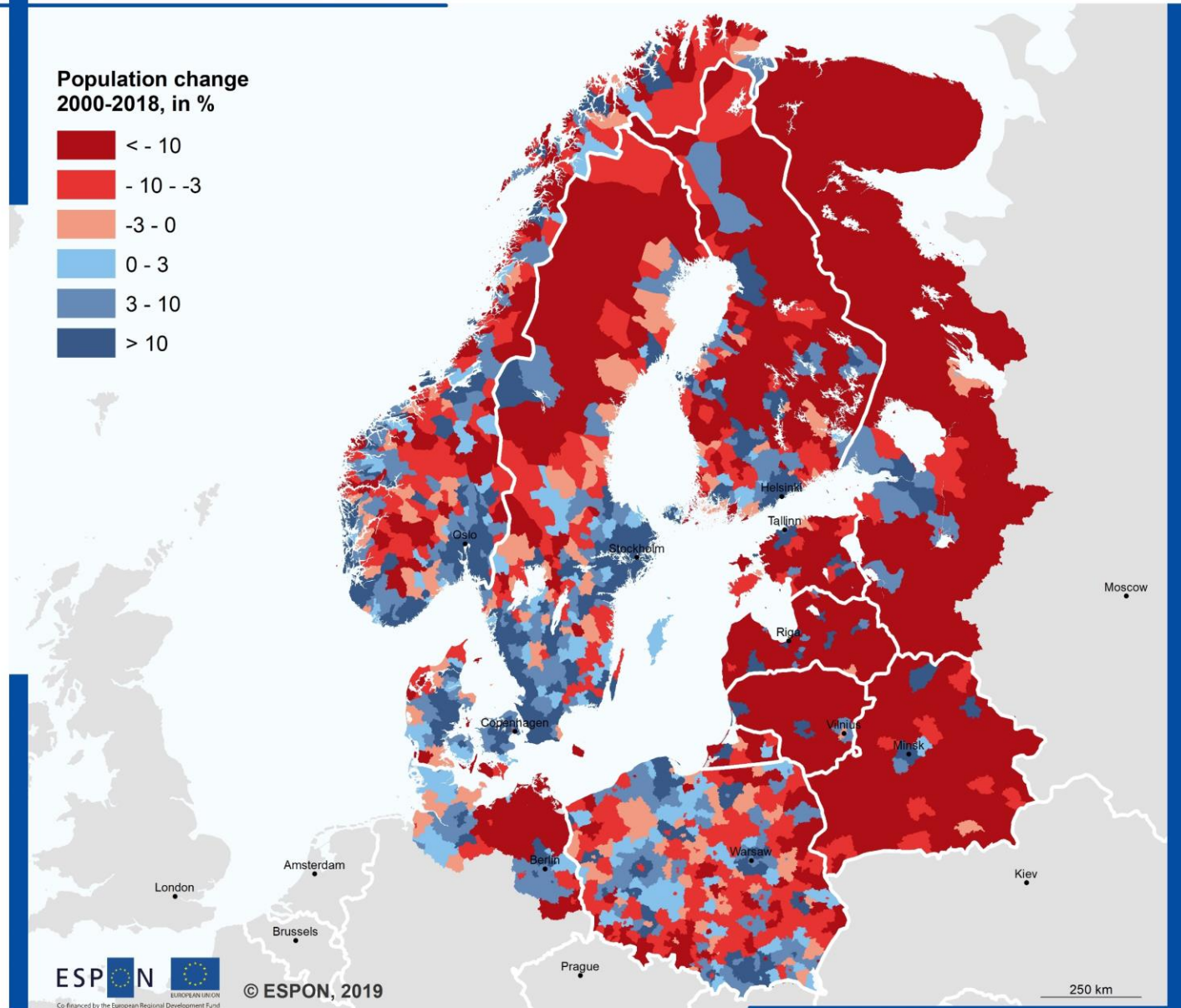
MAMBA = MAXIMIZING MOBILITY AND ACCESSIBILITY OF SERVICES IN REGIONS AFFECTED BY DEMOGRAPHIC CHANGE



Why MAMBA?



Population change 2000-2018



Territorial level: LAU2: FI, NO, SE, EE, LV; LAU1: DK, LT, PL; (version 2017). NUTS3: DE; Rayon: RU & BY
Source: BT2050, 2019
Origin of data: NSI's, 2019

© University of Geneva for administrative boundaries

**10+ local MAMBA projects exemplify how to reduce mobility
and accessibility gaps in rural regions**

MAMBA's lesson learnt: Rural mobility and accessibility challenges require genuine rural solutions



**Community
needs**



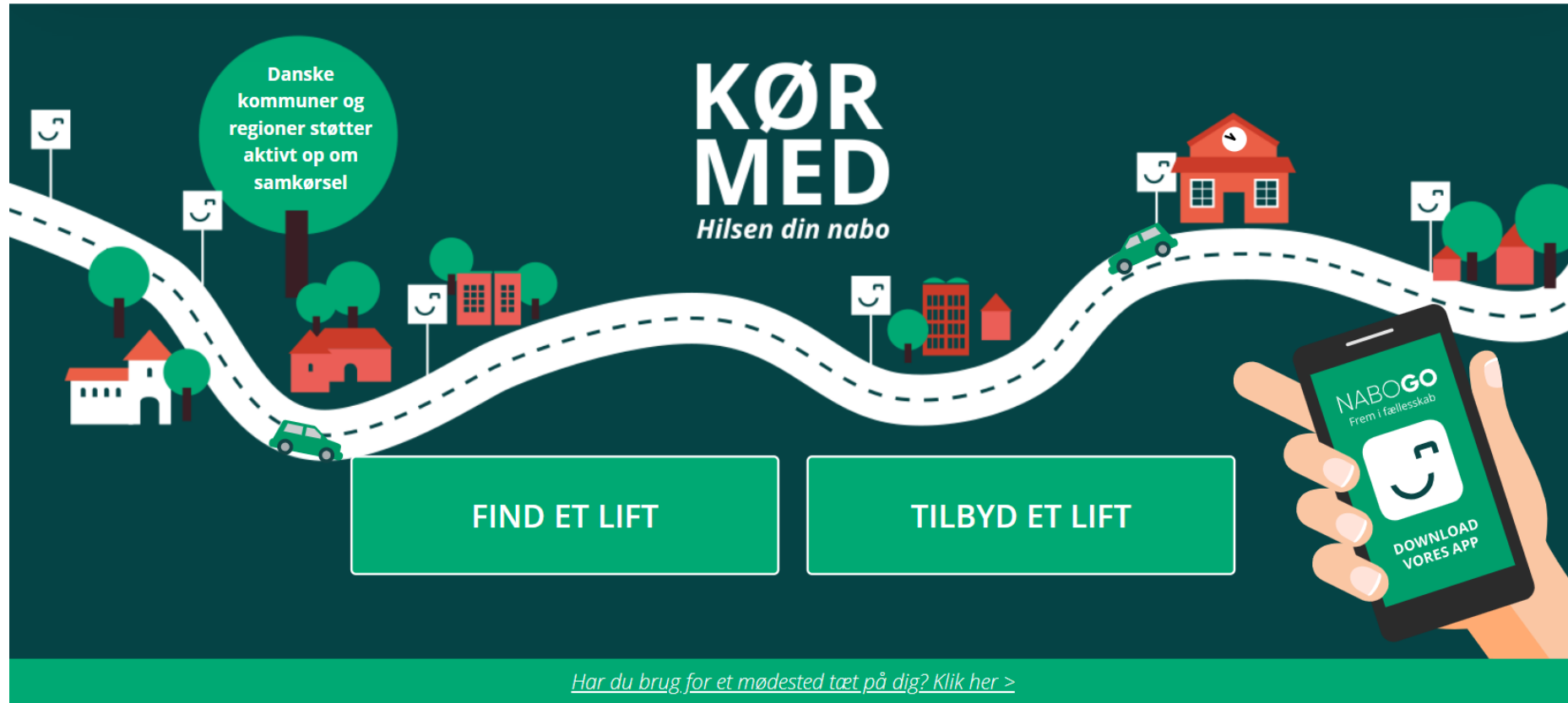
**Territorial
specificities**



**Economic
context**



**Legal constraints
& enablers**



Danske kommuner og regioner støtter aktivt op om samkørsel

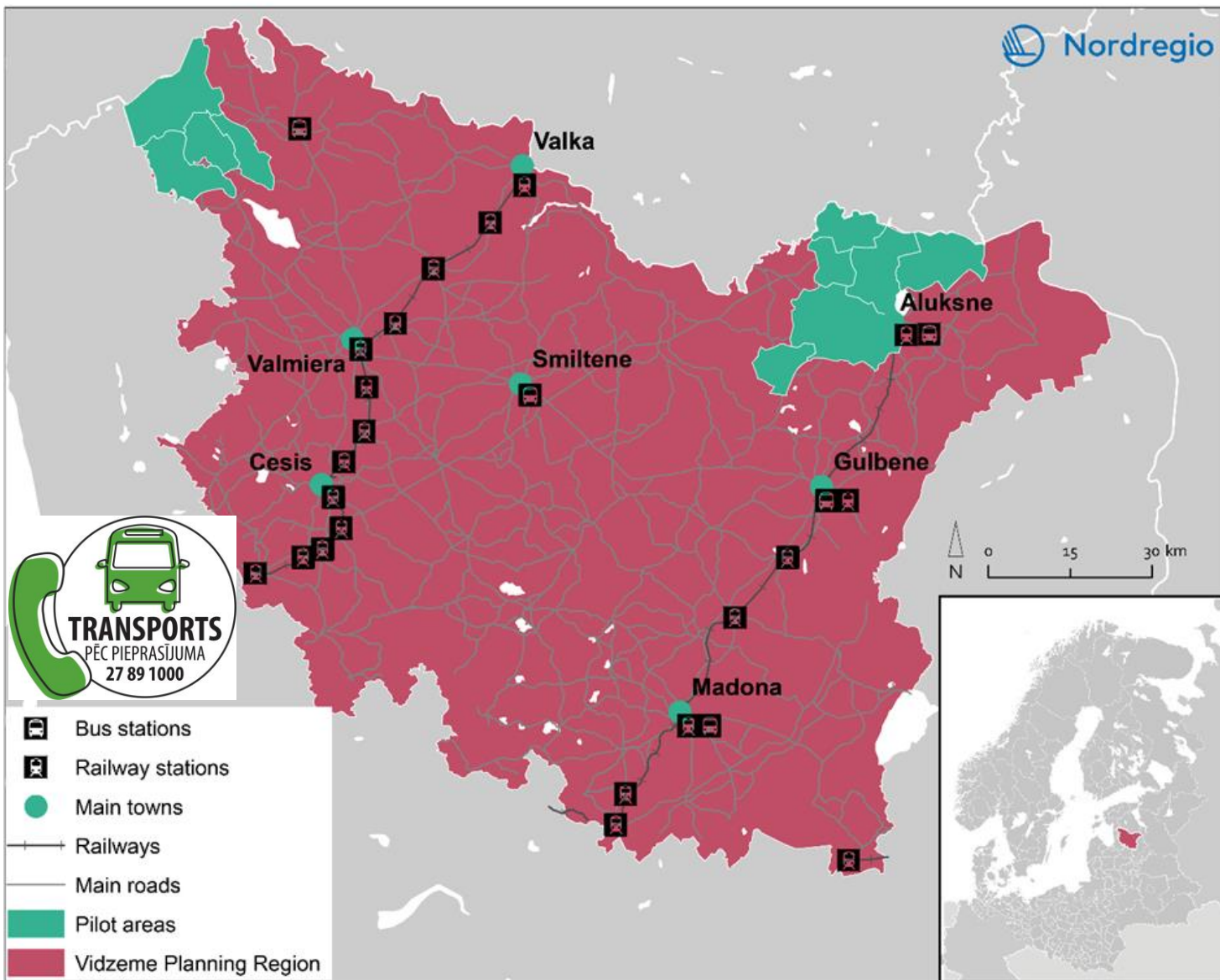
KØR MED

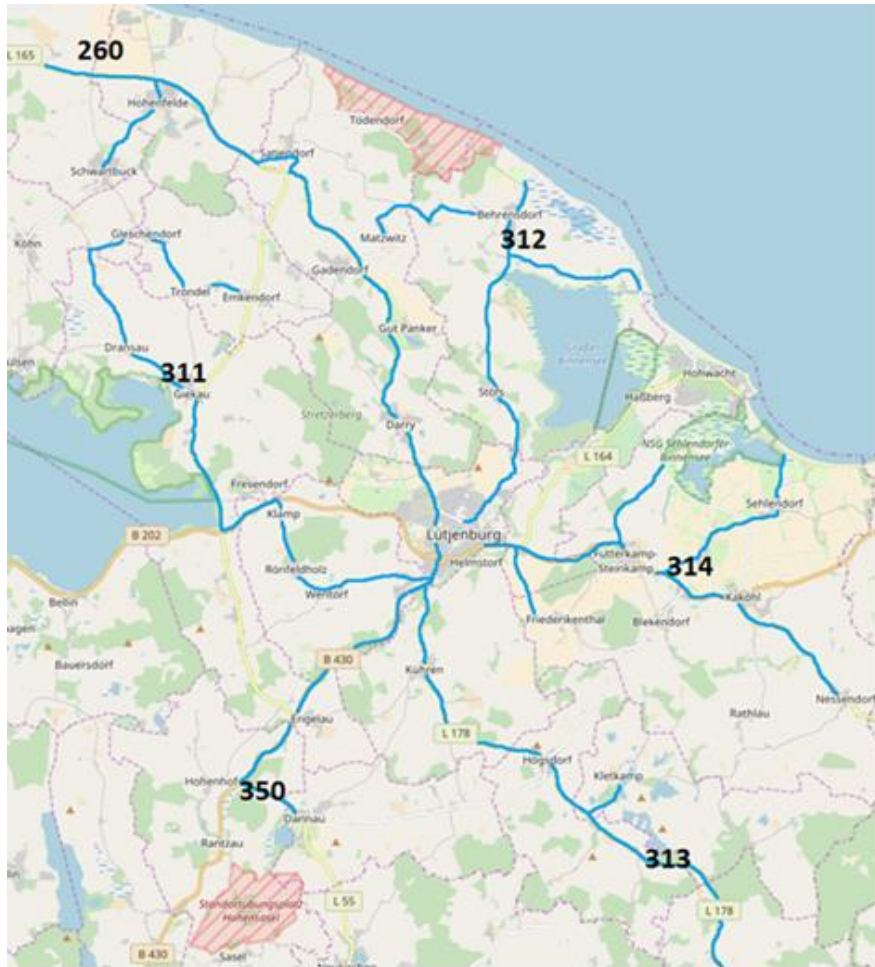
Hilsen din nabo

FIND ET LIFT **TILBYD ET LIFT**

Har du brug for et mødested tæt på dig? [Klik her >](#)







MAMBA's lesson learnt: Rural mobility and accessibility challenges require genuine rural solutions



**Community
needs**



**Territorial
specificities**



**Economic
context**



**Legal constraints
& enablers**

Resources and events

Resources

<https://www.mambaproject.eu/products/>

Final conference

<https://www.mambaproject.eu/2020/06/22/register-now-for-mamba-final-conference-webinar-series/>



Contact

Linda Randall | Nordregio

linda.randall@nordregio.org

www.nordregio.org

mamba

mobility – accessibility – innovation

www.mamba-project.eu



EUROPEAN UNION

EUROPEAN
REGIONAL
DEVELOPMENT
FUND



Nordregio