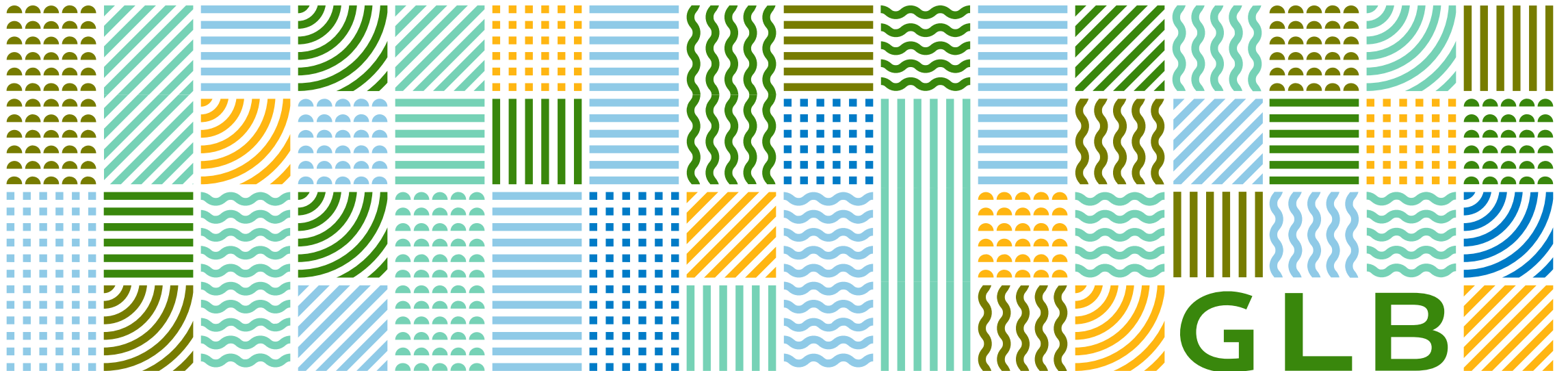




Rijksoverheid

# A rating system for the future CAP

A way to implement Eco-Schemes in the future CAP



**Aard Mulders**, 25 February 2021



## A new approach for green blue delivery

1 + 1 = 3

- A new intervention logic for green delivery:
  - Supporting a change in agriculture: growing towards sustainable agriculture.
  - A targeted approach for EU legal obligations with focus on public objectives for climate, soil-, water-, air quality, biodiversity and landscape elements.
  - Linking income support with interventions for rural development:
    - Aligning conditionality, ecoschemes and AECM;
    - Supported by investments, improvement of knowledge skills, cooperation, experiments and innovation, both on agricultural land, farmhouses as other rural areas;
    - Linking policy goals with policy results in a region;
    - Efficient and simple.

# A green blue farmlandscape



Knowledge, cooperation and investments

AECM

Compensation for disadvantages

Ecoschemes

Ecoschemes

Heighten the water table in peatland

Support pollinators

Broaden buffer strips beside watercourses

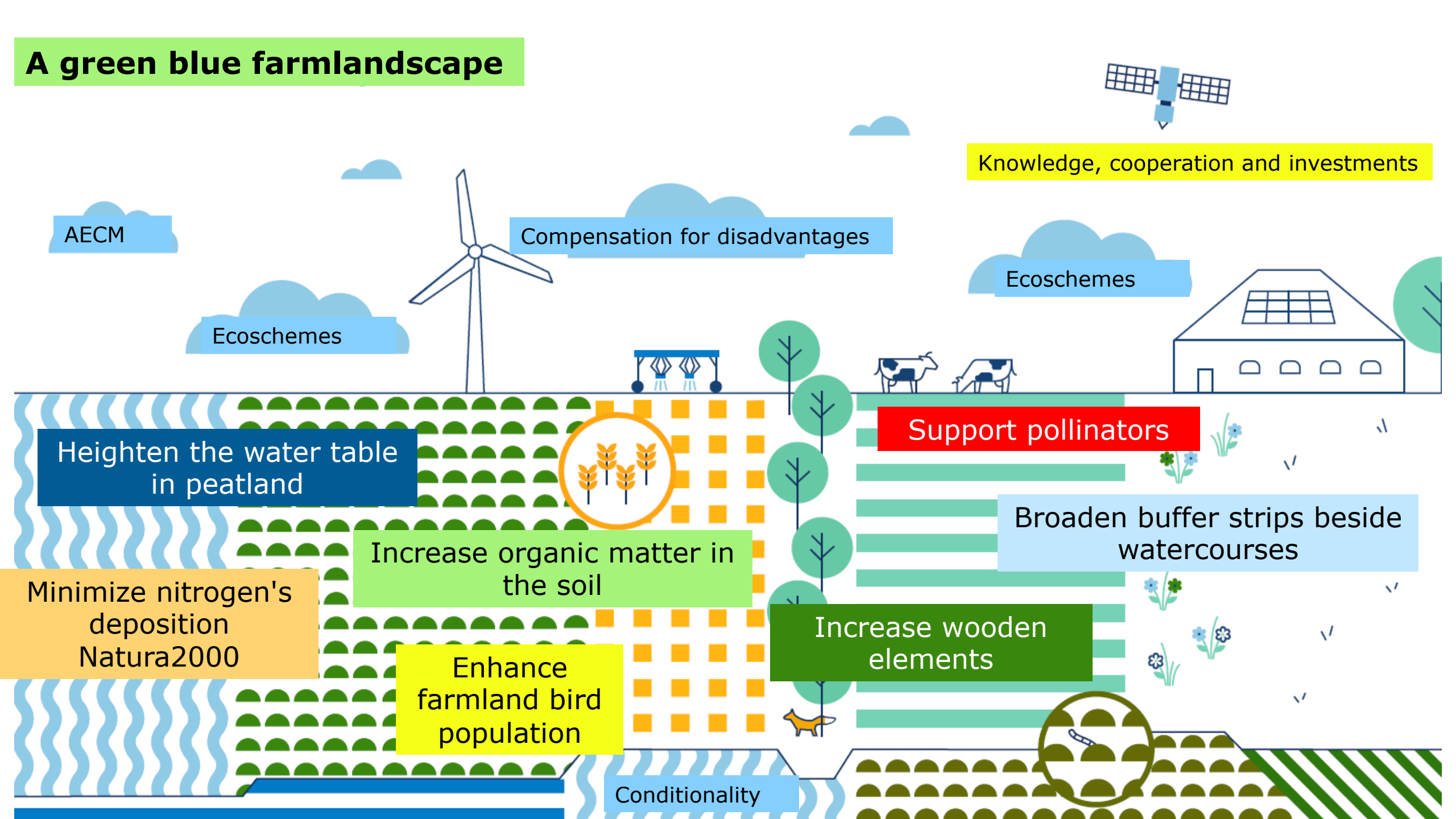
Increase organic matter in the soil

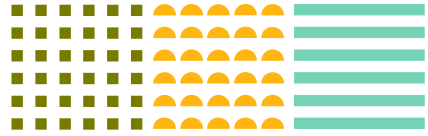
Increase wooden elements

Minimize nitrogen's deposition Natura2000

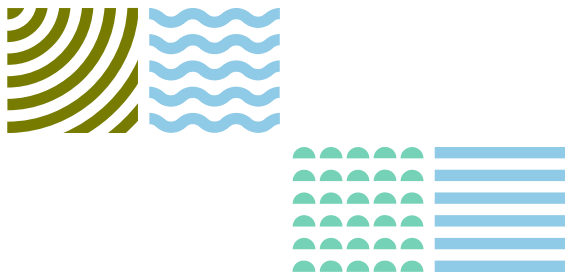
Enhance farmland bird population

Conditionality





# Focus on ecoschemes





# Ecoschemes: 4 options

1. Payment per action/ha;
2. Payment per action/farm;
3. Rating system/farm;
4. Rating system/ha.

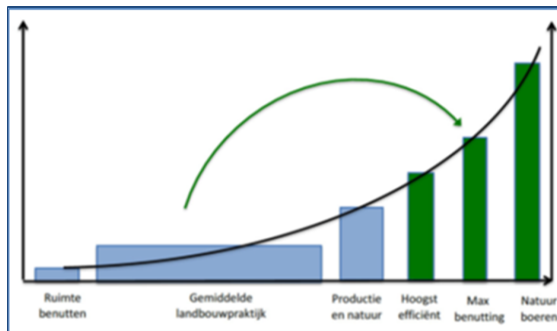
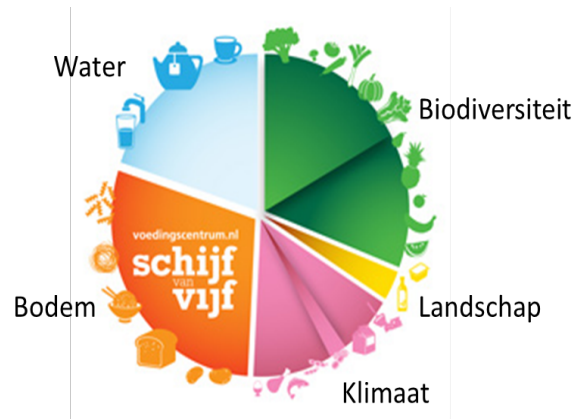
Analyses on the basis of:

- participants,
- targeting,
- ambition/goals,
- flexibility,
- regionally applicable, and
- implementation.

Kolom1	▼ Action/Ha realization ▼	Action/Ha Farm	▼ Rating system/Ha Farm ▼	▼ Rating system/Ha realization ▼
Scale	100%	100%	100%	100%
Participants	++	++	++	+
Targeting	++	+	+	++
Ambition / goals	0	0	++	++
Flexibility	+	+	++	++
Regional applicable	+	+	++	++
Implementation/justification	--	++	+	--
<b>TOTAL</b>	<b>6</b>	<b>7</b>	<b>10</b>	<b>9</b>

CHOISE: option 3: Rating system/farm level

# What should it do?



- A rating system, developed by the government, supported by farmers and other stakeholders.
- The goal is to strengthen the sustainability performance of farmers, in a:
  - national rating system with regional differentiation;
  - broadly accessible by farmers;
  - activities go beyond conditionality AND good agricultural practices.
- Working with the rating system should be easy and flexible for farmers.
- The rating system gives insight in a farm(ers) sustainability profile and can improve farmers' market award.
- The measures in a rating system should be easy to monitor, for example by satellite.





## Central characteristics

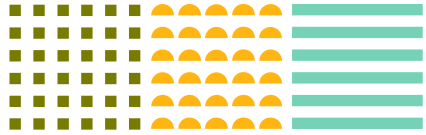
- National scheme for all (groups of) BISS applicants.
- National goals and activities with regional differentiation, laid down in a GIS-application.
- Fixed maximum payment per hectare for all farmers, differentiated by points (bronze, silver, gold).
- Payment when enough activities to justify the fixed maximum payment.



Score op gebiedsdoelen																
doel	Score per doel	Wegingsfactor (minimum vanuit landelijke)	Wegingsfactor vanuit gebiedsdoel	Wegingsfactor	aantal punten brons	aantal punten zilver	aantal punten goud	Brons			Zilver			Goud		
Klimaat	66,0	25%	0%	25%	50	50	50	voldoende								
Bodem	174,2	10%	15%	25%	50	50	50	voldoende								
Water	117,9	10%	0%	10%	20	20	20	voldoende								
Lucht	0,0	0%	0%	0%	0	0	0	voldoende								
Landschap	139,0	10%	5%	15%	30	30	30	voldoende								
Biodiversiteit	164,0	25%	0%	25%	50	50	50	voldoende								
Totaal	661,1	voldoende						voldoende	voldoende	voldoende						

# Various activities on farmland

## Growth plan change



- more rest crops
- more protein crops
- deep-rooting crops
- long-term grassland
- multi-annual crops
- agroforestry
- various grassland (grass/clover; more herbs)

Extended grazing  
Ureum in milk



Landscape elements  
ditches  
wooden elements  
field margins

## Cultivation/use



- keep soil covered
- no tillage
- mixed cropping
- no pest management

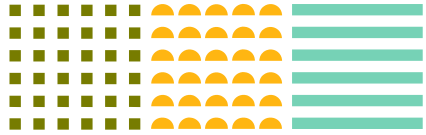



## Other measures

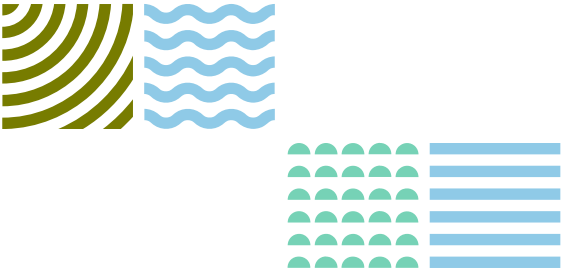
- cooperation in circular agriculture
- cooperating farmers in an area (sustainability plan)
- cooperation with AECM management
- soil passport




# From activity to payment



1. A farmer chooses (Single payment application) from the list of available measures (app)
2. The measures have a number of points per CAP-NSP target 
3. The farmer must score a minimum number of points
4. The farmer must score a minimum number of points per goal
5. Control: If so? Then eco-premium
6. Bronze, silver gold.



 doelen	Score per doel	Wegingsfactor (gebiedsafhanke lijk)	Benodigd aantal punten	Uitslag
Klimaat	11,4	10%	10	voldoende
Bodem	25,4	25%	25	voldoende
Water	15,8	15%	15	voldoende
Lucht	0,0	0%	0	voldoende
Landschap	26,4	25%	25	voldoende
Biodiversiteit	28,0	25%	25	voldoende

# Questions?

