



European Network for  
Rural Development

EN



# RURAL DEVELOPMENT POLICY IN FIGURES

Insight into programme delivery  
throughout the EU

**ENRD** *Connecting Rural Europe...*  
[www.enrd.eu](http://www.enrd.eu)

Funded by the



# INSIGHT INTO POLICY DELIVERY

For each year of the current programming period (2007-2013), the ENRD publishes a series of information products based on the RDPs' monitoring indicators which provide key insight into rural development policy delivery by illustrating expenditure levels and by reporting on the outputs achieved. The indicators are used to assess whether Rural Development Programme (RDP) targets are being attained, both by policy measure and overall.



The information is freely available to all via the ENRD website and it includes data regarding:

- Rural Development Programme (RDP) performance at national and European level;
- the performance of individual rural development policy measures; and
- rural development policy interventions by theme (i.e. by groups of related policy measures).

The suite of products is based on the data communicated by RDP Managing Authorities in their Annual Progress Reports to the European Commission. Information is provided for all EU27 Member States, covering 88 national and regional programmes.

Link to rural development policy in figures:

<http://enrd.ec.europa.eu/policy-in-action/rural-development-policy-in-figures>

# RDP MONITORING INDICATORS

The ENRD website provides data and illustrative charts and graphs to indicate the implementation progress of each RDP. Financial (EAFRD and national expenditure) and physical indicators are provided (specifically output indicators, as defined by the Common Monitoring and Evaluation Framework for rural development 2007-2013):

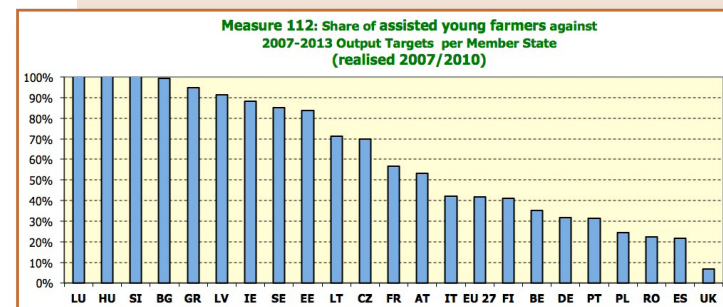
**i) Financial progress summary tables:** show the financial implementation of the RDPs, providing data on the budget allocated for each measure for the entire programming period and the actual payments to beneficiaries.

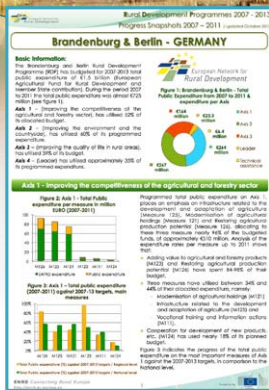
Description	Realised 2007-2008-2009-2010-2011	
	EAFRD	Total Public
Vocational training and information actions	19,509,009.35	39,561,116.05
Setting up of young farmers	41,955,798.02	85,660,156.08
Early retirement	0.00	0.00
Use of advisory services	0.00	0.00
Setting up of management, relief and advisory services	0.00	0.00
Modernisation of agricultural holdings	212,035,032.27	429,226,715.71
Improvement of the economic value of forests	14,463,632.45	29,014,831.54
Adding value to agricultural and forestry products	40,793,674.97	79,648,369.51
Cooperation for development of new products, processes and technologies in the agriculture and food sector and in the forestry sector	4,787,377.80	9,196,884.01
Infrastructure related to the development and adaptation of agriculture and forestry	25,026,060.76	51,287,466.36
Restoring agricultural production potential	0.00	0.00
Meeting standards based on EU legislation	0.00	0.00
Participation of farmers in food quality schemes	5,543,379.80	11,008,857.00

**ii) Physical indicators summary tables:** data and graphs providing information about the progress of each RDP in terms of output (e.g. number of young farmers supported including gender breakdown).

Output	Unit	Value	Targets 2007-13
Number of participants in training	N.	17,018	101,450
Number of training days received	N.	109,107,22	238,905,00
Number of assisted young farmers	N.	190	600
Total volume of investments	thousand EUR	7,805,65	9,000,00
Number of farm holdings that received investment support	N.	8,818	31,777
Total volume of investments	thousand EUR	3,287,412,14	8,122,443,63
Number of forest holdings that received investment support	N.	27	105
Total volume of investments	thousand EUR	548,79	3,700,00
Number of enterprises supported	N.	547	1,692
Total volume of investments	thousand EUR	859,900,04	2,016,327,00
Number of cooperation initiatives supported	N.	14	158
Number of operations supported	N.	13,268	18,895
Total volume of investments	thousand EUR	1,339,262,18	2,058,802,00
Supported area of damaged agricultural land	Ha	401,510	1,257,461

**iii) Progress summary tables per measure:** data providing an indication of the progress of each rural development policy measure in terms of outputs at the EU level and including breakdown per Member State.

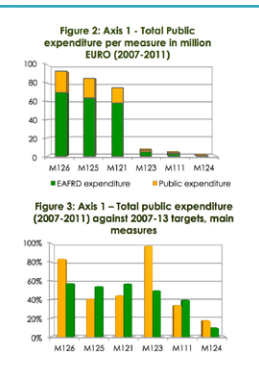




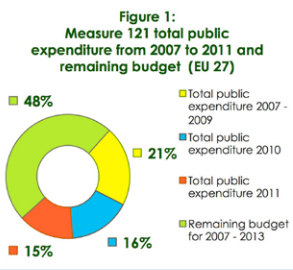
# ANALYSIS OF POLICY DELIVERY

The ENRD complements the monitoring indicator data with information sheets that provide analysis of policy delivery. This useful resource establishes connections between resources and outcomes of the rural development policy.

**i) RDP Information Sheets:** these are 'snapshots' of the progress achieved by RDPs and they combine information about financial implementation of the programmes and the overall progress in terms of outputs.



**ii) Measures Information Sheets:** these are 'snapshots' of the progress made at measure level and in comparison with the targets set for the whole programming period.



# ANALYSIS BY POLICY THEME

Further analysis is provided by the **Thematic Information Sheets** which provide a clear picture of the rural development policy interventions by theme and highlight linkages between policy priorities, the implementing measures and the actual outcomes on the ground.

The Thematic Information Sheets provide a brief summary of the conceptual framework behind the policy intervention and describe the measures through which priorities are to be implemented. Furthermore this analysis provides illustrative examples of actual beneficiaries and information on budgetary allocation, expenditure and the outputs achieved.



# Check out the re-launched ENRD Website!

## www.enrd.eu

The screenshot displays the ENRD website interface. At the top, it features the European Commission logo and the title 'EUROPEAN NETWORK FOR RURAL DEVELOPMENT (ENRD) Connecting Rural Europe...'. Below this is a navigation menu with options like 'Home', 'Policy in Action', 'Country', 'Themes', 'LEADER', 'Networks & Networking', 'Publications & Media', 'Events & Meetings', 'Info', and 'LOGIN'. A search bar is located on the right side. The main content area includes a section titled 'The European Network for Rural Development (ENRD)' with a brief description of its role as a hub connecting rural development stakeholders. Below this is a banner for the 'LEADER Event 2013' with the slogan 'Got ideas for the LEADER Event 2013...? Join the debate!'. A large map of Europe is featured, with various country flags placed over the map to indicate connections. A legend at the bottom of the map identifies EU Member Countries, Accession to EU in 2013, Candidate countries, Potential candidate countries, and Other countries. On the right side of the page, there are sections for 'Key Tools' (including eENRD, RDP Database, Gallery, and Communication Gateway) and 'News' (with a 'Story of the Month' section).

### European Network for Rural Development (ENRD) Contact Point:

Rue du Marteau, 81 Tel: +32 2 235 20 20  
 B - 1000 Brussels Fax: +32 2 280 04 38  
 Belgium E-mail: info@enrd.eu

Cover photo : © ENRD Contact Point



Publications Office

ENRD Connecting Rural Europe...

DOI 10.2762/52190

ISBN 978-92-79-28761-9



9 789279 287619