

In national currency					
	Euro-super 95 (I)	Gas oil automobile Automotive gas oil Dieselkraftstoff (I)	Gas oil de chauffage Heating gas oil Heizöl (II)	Fuel oil - Schweres Heizöl (III) Soufre <= 1% Sulphur <= 1% Schwefel <= 1%	Fuel oil - Schweres Heizöl (III) Soufre > 1% Sulphur > 1% Schwefel > 1%
	1000L	1000L	1000L	t	t
Bulgaria (BGN)	839.00	844.00	823.00		680.00
Czech Republic (CZK)	11,831.67	12,497.50	11,235.00	7,443.00	
Denmark (DKK)	3,922.00	3,851.00	4,070.00	2,700.00	
Estonia (EEK)	6,761.67	6,960.33	6,880.67		
Hungary (HUF)	128,354.95	136,219.94	136,219.94	94,842.37	
Latvia (LVL)	321.91	340.38	307.32		
Lithuania (LTL)	1,529.17	1,555.26	1,569.15		1,113.14
Poland (PLN)	1,845.28	1,899.15	1,838.31	1,579.00	1,259.00
Romania (RON)	1,984.89	2,017.23	1,647.48	1,670.00	
Sweden (SEK)	4,552.00	4,973.00	4,604.00	4,173.02	
United Kingdom (GBP)	368.65	383.43	370.06		

En/In EURO					
	Euro-super 95 (I)	Gas oil automobile Automotive gas oil Dieselkraftstoff (I)	Gas oil de chauffage Heating gas oil Heizöl (II)	Fuel oil - Schweres Heizöl (III) Soufre <= 1% Sulphur <= 1% Schwefel <= 1%	Fuel oil - Schweres Heizöl (III) Soufre > 1% Sulphur > 1% Schwefel > 1%
	1000L	1000L	1000L	t	t
Austria	430.32	455.74	458.64	340.00	
Belgium	438.50	461.16	453.00	320.05	
Bulgaria	428.98	431.54	420.80		347.68
Cyprus	493.10	498.81	467.06	468.75	
Czech Republic	450.13	475.46	427.43	283.17	
Denmark	527.04	517.50	546.93	362.83	
Estonia	432.15	444.85	439.75		
Finland	501.89	536.60	457.41		
France	441.37	458.22	492.56	365.75	345.27
Germany	449.70	464.89	465.15	324.30	
Greece	485.26	525.05	457.73	383.96	
Hungary	475.65	504.80	504.80	351.46	
Ireland	464.67	481.63	579.74	271.36	
Italy	514.31	523.22	520.35	374.89	
Latvia	453.84	479.88	433.27		
Lithuania	442.88	450.43	454.46		322.39
Luxembourg	480.35	476.93	433.40		
Malta	502.30	469.63	436.90	428.98	
Netherlands	487.66	476.59	372.69	310.94	
Poland	449.74	462.87	448.04	384.84	306.85
Portugal	502.05	520.59	469.36	452.56	
Romania	469.76	477.42	389.91	395.24	
Slovakia	472.89	474.99	485.00	273.00	266.36
Slovenia	440.49	446.33	415.50	372.00	
Spain	502.97	510.96	438.16	364.25	
Sweden	446.58	487.88	451.68	409.40	
United Kingdom	413.56	430.14	415.14		
CE/EC/EG EUR 27 (IV) Moyenne pondérée Weighted average Gewichteter Durchschnitt	460.69	479.57	471.70	368.82	328.95
CE/EC/EG Euro Area 16 (€) (V) Moyenne pondérée € Weighted average € Gewichteter Durchschnitt €	473.62	486.72	472.30	367.27	342.16

Other petroleum products	In National Currency	In/En EURO
--------------------------	-------------------------	------------

Lead Substitute Petrol (1000L) (I)

Czech Republic (CZK)	11,295.83	429.74
Greece (EUR)		543.99

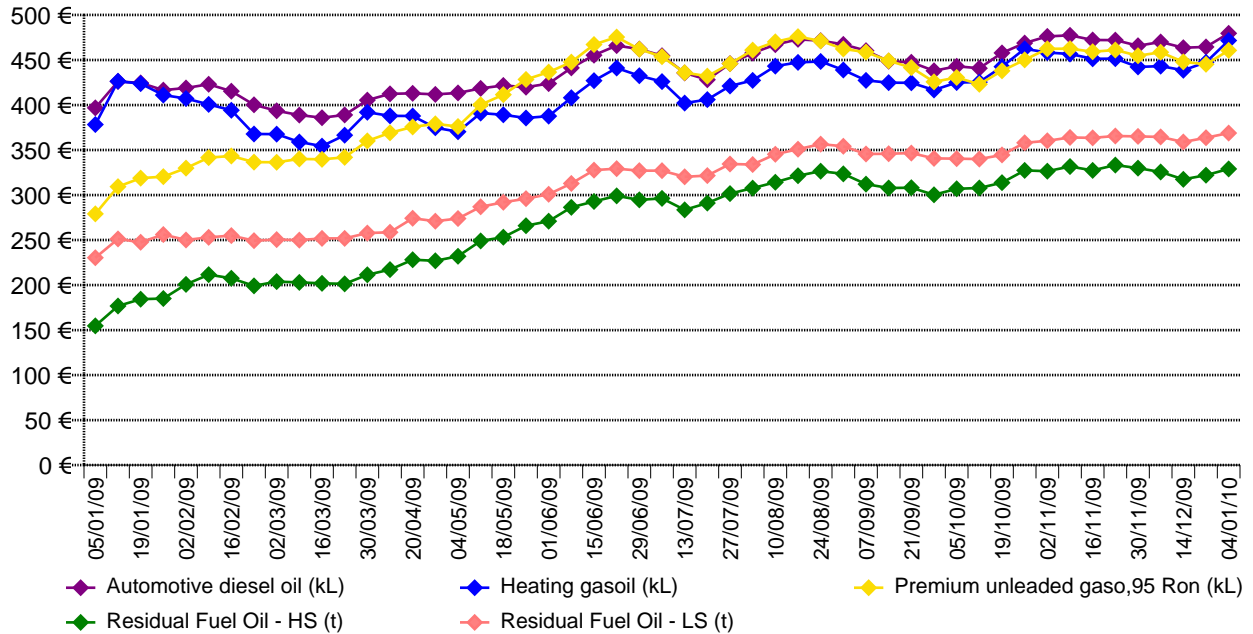
LPG - motor fuel (1000L) (I)

Belgium (EUR)		423.14
Bulgaria (BGN)	1,150.00	587.99
Czech Republic (CZK)	8,548.33	325.22
Estonia (EEK)	6,322.67	404.09
France (EUR)		517.69
Germany (EUR)		397.58
Hungary (HUF)	107,635.98	398.87
Italy (EUR)		381.46
Latvia (LVL)	219.09	308.88
Lithuania (LTL)	992.10	287.33
Luxembourg (EUR)		419.59
Netherlands (EUR)		472.66
Poland (PLN)	1,275.79	310.94
Portugal (EUR)		477.85
Romania (RON)	1,266.62	299.77
Slovakia (EUR)		378.15
Slovenia (EUR)		431.81
Spain (EUR)		420.33

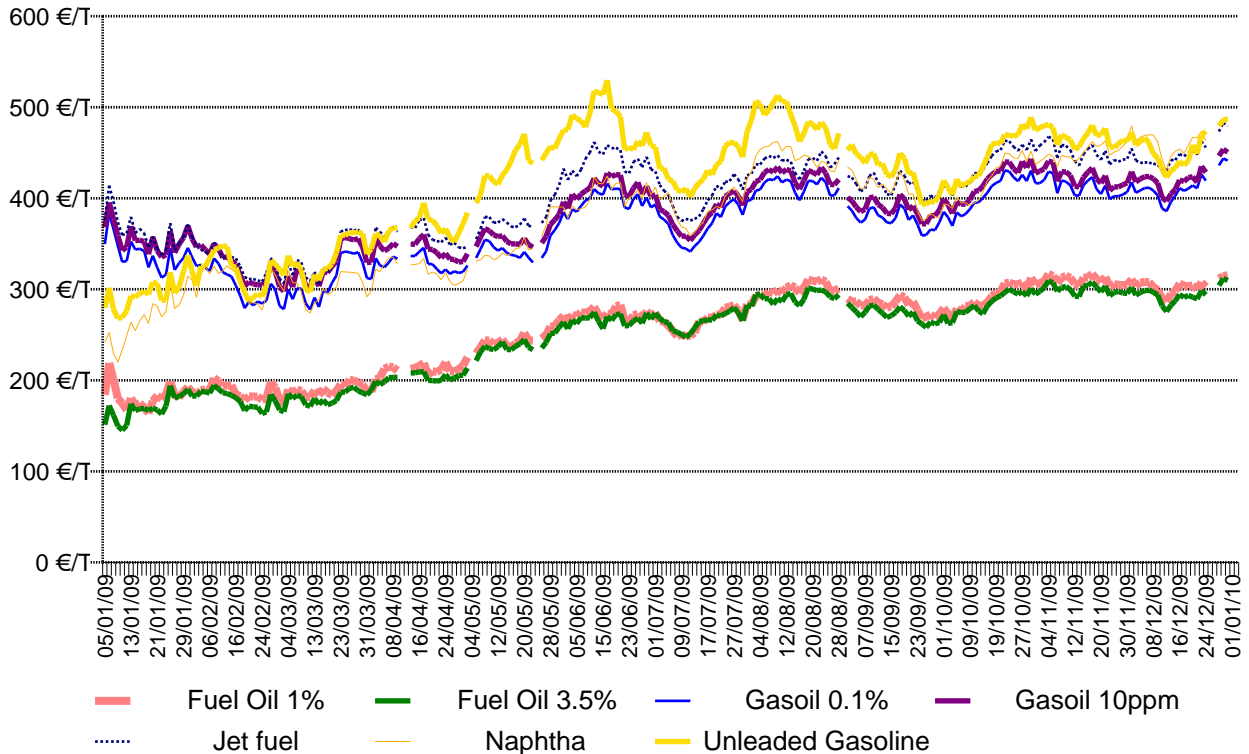
Standard Grade Burning Oil UK (1000L) (II)

United Kingdom (GBP)	390.75	438.36
----------------------	--------	--------

PRIX A LA CONSOMMATION DES PRODUITS PETROLIERS (hors droits et taxes) - MOYENNE PONDEREE - EUR 27
 CONSUMER PRICES OF PETROLEUM PRODUCTS (Net of duties and taxes) - WEIGHTED AVERAGE - EUR 27
 VERBRAUCHERPREISE FÜR MINERALÖLERZEUGNISSE (ohne Steuern und Abgaben) - GEWICHTETER DURCHSCHNITT - EUR 27



PRIX SPOT DES PRODUITS PETROLIERS (Platts) - COTATIONS DE ROTTERDAM FOB
 SPOT OIL PRODUCTS PRICES (Platts) - ROTTERDAM QUOTATIONS-BARGES FOB
 SPOT-PREISE MINERALÖLERZEUGNISSE (Platts) - ROTTERDAM NOTIERUNGEN FOB



Euro exchange rate		
Bulgaria	BGN	1.95580
Czech Republic	CZK	26.28500
Denmark	DKK	7.44150
Estonia	EEK	15.64660
Hungary	HUF	269.85000
Latvia	LVL	0.70930
Lithuania	LTL	3.45280
Poland	PLN	4.10300
Romania	RON	4.22530
Sweden	SEK	10.19300
United Kingdom	GBP	0.89140

- (I) Pump prices
- (II) Delivered consumer prices for deliveries of 2 000 to 5 000 litres (for offtakes of less than 2 000 litres the industrial sector may be taken into consideration)
- (III) Delivered consumer prices for offtakes of less than 2 000 tonnes per month or less than 24 000 tonnes per year (for Ireland, deliveries of 500 to 1 000 tonnes per month)

The prices inclusive of duties and taxes are VAT excluded

- (IV) Average resulting from the weighting of the quantities consumed during the year 2008 (EUR 27/EUR 25)
- (V) Average resulting from the weighting of the quantities consumed during the year 2008 (EUROLAND)



EUROPEAN COMMISSION
Directorate General Energy and Transport

Prix à la consommation des produits pétroliers hors droits et taxes
Consumer prices of petroleum products net of duties and taxes
Verbraucherpreise für Mineralölzeugnisse ohne Abgaben und Steuern

Prix en vigueur au
Prices in force on
Preise geltend am

04/01/2010

The prices communicated by the Member States are the prices most frequently charged, based on a weighted average.

Comparisons between prices and price trends in different countries shall be carefully made. They are of limited validity because of differences in product quality, in marketing practices, in market structures, and to the extent that standard categories are representative of the total sales of a given product.

Information concerning subscriptions to the Oil bulletin : e-mail : tren-oil-bulletin@ec.europa.eu

Disclaimer

This oil bulletin prepared by the European Commission aims at enhancing public access to information about petroleum product prices within the Members States of the European Union. Our goal is to keep this information timely and accurate. If errors are brought to our attention, we will try to correct them.

However the Commission accepts no responsibility or liability whatsoever with regard to the information on this publication.

Copyright notice

Reproduction is authorised provided the source is acknowledged.

© European Communities, 2009