



**Social Protection and Social Integration -
Social protection and Inclusion Policies Unit**

**Call for proposals VP/2001/014 for preparatory actions to
combat and prevent social exclusion
(under 2001 Budget line B3-4105)**

This call was for proposals that would prepare Community action to encourage cooperation between Member States in order to combat social exclusion and promote social inclusion. The call was published in the Official Journal on 03.05.2001 (2001/C 131/05) and proposals had to be submitted by 10.07.2001 at the latest.

This document presents the objectives of the call and the results of the selection process, including a short description of the 46 selected projects. All projects are supposed to start at the end of 2001 for a maximum period of 18 months.

TABLE OF CONTENTS

1.	CONTEXT OF THE CALL.....	4
2.	OBJECTIVES OF THE CALL	4
3.	PRIORITY AREAS FOR COOPERATION	5
3.1.	Strand 1: Conducting and disseminating research making for a better understanding of social exclusion	5
3.2.	Strand 2: Action to help the most vulnerable	5
3.3.	Strand 3: Promoting innovative approaches in policies for combating exclusion through the exchange of good practices	6
4.	RESULTS OF THE SELECTION OF PROPOSALS SUBMITTED	6
4.1.	List of selected projects divided up by priority areas for cooperation	8
4.2.	List of selected projects divided up by country applying.....	11
5.	DESCRIPTION OF PROPOSALS SELECTED IN THE FRAMEWORK OF THE CALL FOR PROPOSALS VP/2001/014	13
5.1.	ASSOCIAZIONE PER LA PACE ONLUS.....	14
5.2.	Accademia Europea di Bolzano / Europäische Akademie Bozen - EURAC	16
5.3.	Associação para o Desenvolvimento dos Recursos Humanos - ADERE.....	19
5.4.	Associação Fernão Mendes Pinto.....	21
5.5.	AMITIE	23
5.6.	Associazione On the Road.....	25
5.7.	Ayuntamiento de Barcelona, Sector de Servicios Personales	28
5.8.	BaS - Bundesarbeitsgemeinschaft Seniorenbüros e.V.	30
5.9.	CENTRO DI SOLIDARIETA' DI REGGIO EMILIA - CESRE.....	32
5.10.	Caisse Centrale de la Mutualité Sociale Agricole - CCMSA.....	35
5.11.	Confédération Européenne des Coopératives de Travail Associé, des Coopératives Sociales et des Entreprises Participatives - CECOP	37
5.12.	Fosie stadsdelsförvaltning	39
5.13.	COMUNE DI FORLI'	41
5.14.	CONFEDERACIÓN DE EMPRESARIOS DE ARAGÓN	44
5.15.	COO.S.S. Marche a R. L. - Cooperativa Sociale ONLUS	47
5.16.	El Sur Piccola Società Cooperativa a Responsabilità Limitata	49
5.17.	European Forum for Child Welfare.....	51
5.18.	EUROPEAN OFFENDER EMPLOYMENT FORUM - EOEF	53

5.19. EUROCITIES.....	55
5.20. Fondazione Istituto Andrea Devoto.....	58
5.21. Gesellschaft für Berufsbildende Massnahmen e.V.	61
5.22. Hoger Instituut voor de Arbeid (Catholic University of Leuven)	63
5.23. INDE, Organização Cooperativa para a Intercooperação e o Desenvolvimento, CRL	67
5.24. Instituto Municipal de Formación y Empleo, Ayuntamiento de Granada.....	69
5.25. Institut für Finanzdienstleistungen e.V.....	71
5.26. Associazione Irene - Iniziative, Ricerche Esperienze Nuova Europa.....	73
5.27. Istituto Antonio Provolo - I.A.P.	75
5.28. National Technical University of Athens, Research Committee.....	77
5.29. Royal National Institute for the Blind	79
5.30. SIGN.....	81
5.31. Solco S.r.l. - Servizi per l'Organizzazione del Lavoro e la Creazione di Occupazione.....	83
5.32. Stadt Göttingen, Amt für Beschäftigungsförderung.....	85
5.33. Steunpunt Mensen Zonder Papieren vzw. - SMZP	87
5.34. Asociación de Mujeres para la Reinserción Laboral	89
5.35. The Bridge Child Care Development Service.....	91
5.36. Unión de Cooperativas Madrileñas de Trabajo Asociado - UCMTA.....	93
5.37. Transport & Travel Research Ltd TTR	95
5.38. ULF- Udviklingshæmmedes Landsforbund.....	97
5.39. Union Nationale Interfédérale des Organismes Privés Sanitaires et Sociaux - UNIOPSS	99
5.40. The University of Birmingham	101
5.41. Vlaams Forum Armoedebestrijding	104
5.42. Verein Niedersächsischer Bildungsinitiativen e.V.....	107
5.43. European Association of Service Providers for Persons with Disabilities.....	109
5.44. Fédération des Centres d'Insertion.....	113
5.45. Association for Innovative Cooperation in Europe - AICE	115
5.46. The Quest Trust	117

1. CONTEXT OF THE CALL

The Amsterdam Treaty includes provisions for the Community to adopt measures designed to encourage such cooperation to combat social exclusion. The Lisbon European Council concluded that "policies for combating social exclusion should be based on an open method of coordination combining national action plans and a Commission initiative for cooperation in this field to be presented by June 2000".

Building on the Lisbon European Council commitments, the Nice European Council adopted appropriate objectives in combating social exclusion and eliminating poverty, on the basis of which Member States were invited to determine their priorities and present a two-year national action plan by June 2001. These objectives centre around the following four themes:

- promoting participation in employment and access for all to resources, rights, goods and services;
- preventing the risks of exclusion;
- taking action to help the most vulnerable;
- mobilising all the players involved.

In keeping with the Lisbon European Council mandate, the Commission presented a proposal for a programme of Community action to encourage cooperation between Member States to combat social exclusion (COM(2000) 368 final of 16 June 2000). This programme is intended to support the open method of coordination initiated by the Lisbon European Council and fleshed out at the Nice European Council. The objectives of the programme are to enhance the effectiveness and efficiency of Community and Member States' policies and actions by:

- improving the understanding of social exclusion;
- organising policy cooperation and mutual learning in the context of the national action plans;
- developing the capacity of the players concerned to address social exclusion effectively, in particular through support for networks at European level.

2. OBJECTIVES OF THE CALL

This call was seeking proposals for preparatory actions aimed at promoting cooperation and exchanges of information, improving knowledge as regards best practices and assessing the experience gained in combating exclusion.

These actions should involve the widest possible range of players, in particular Member States' administrations, local and regional authorities, the agencies in charge of combating social exclusion, the two sides of industry, organisations

providing social services, non-governmental organisations, universities and research institutes, national statistical offices, the media and actual or potential victims of exclusion.

The call was published in the Official Journal on 03.05.2001 and proposals had to be submitted by 10.07.2001 at the latest.

3. PRIORITY AREAS FOR COOPERATION

As part of the overall aim of preparing the way for the new open method of coordination to promote social inclusion, the Commission was interested in initiatives which would take into account the multi-dimensional nature of social exclusion and would be based on transnational partnerships. Since the goal of Community action is to foster cooperation among Member States, priority was given to proposals entailing active participation by national, regional or local administrations.

Proposals could cover a number of issues relating to the fight against social exclusion and the promotion of social integration in keeping with the strands of action described below. For this call, the Commission opted for the following three strands of action:

3.1. Strand 1: Conducting and disseminating research making for a better understanding of social exclusion

This strand was targeted mainly at administrations, universities and research institutes, national statistical offices and non-governmental organisations.

It aimed to promote analytical studies, including devising indicators, so as to better characterise and measure social exclusion phenomena from a European angle. The projects had to take into account knowledge already acquired in this field in order to update and push forward the understanding of what social exclusion is.

The activities envisaged could take the form of seminars and conferences at European level, exchanges of staff and publications and other such activities.

3.2. Strand 2: Action to help the most vulnerable

This strand was intended for all the players concerned. Priority was given to projects capable of involving a broad range of partners and Member States.

It was meant to foster the social integration of people considered to be more vulnerable within society, especially children, dependent elderly people, and women and men at risk of encountering particular integration problems due to their having a disability, their age or belonging to a particular social group or region. Since some preparatory actions had already been successfully concluded on such topics, the Commission gave preference to innovative proposals, both in terms of content and partnerships.

The activities under such projects could consist of studies making it possible to characterise the situation of such people in the different national and/or local settings, identification of innovative policies and approaches allowing them to

overcome the specific obstacles they face, the holding of meetings/workshops/seminars at European level or other forms of exchange such as joint drafting of strategies, joint dissemination of information, field visits and exchanges of staff.

3.3. Strand 3: Promoting innovative approaches in policies for combating exclusion through the exchange of good practices

This strand was aimed at all the players concerned. Priority was given to projects capable of involving a broad range of partners and Member States.

It was intended to support identification of innovative approaches, the exchange and dissemination of good practices at all levels with a view to improving the effectiveness of social integration policies and facilitating access for all to a certain number of resources, rights, goods and services. The following are some of the fields involved: access to accommodation, health, education and vocational training, the labour market, the new information and knowledge society, public services, including legal advice, social protection, culture and leisure, etc. Since some preparatory actions had already been successfully concluded on such topics, the Commission gave preference to innovative proposals, both in terms of content and partnerships.

The activities under such projects could consist of identifying innovative approaches in the various fields mentioned above, conducting studies into experience in the field, the holding of meetings/workshops/seminars at European level or other forms of exchange such as joint drafting of strategies, joint dissemination of information, field visits and exchanges of staff.

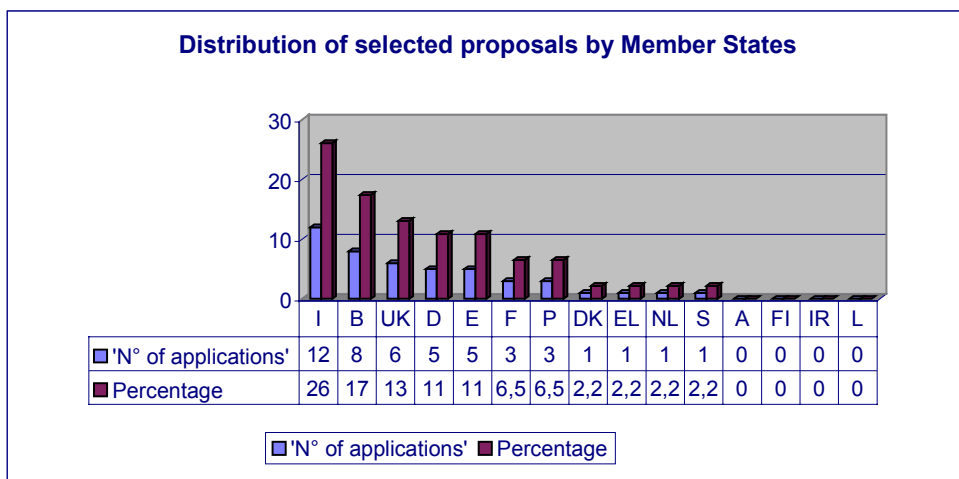
4. RESULTS OF THE SELECTION OF PROPOSALS SUBMITTED

- 250 applications were submitted requesting a total amount of € 46 658 756,38.
- 44 proposals did not fulfil the formal eligibility criteria mentioned in the guidelines of the call and could not therefore be admitted into the assessment procedure based on the criteria as laid down in the guidelines of the call;
- 206 proposals were evaluated on their merits, out of which 46 proposals were selected for financial support.

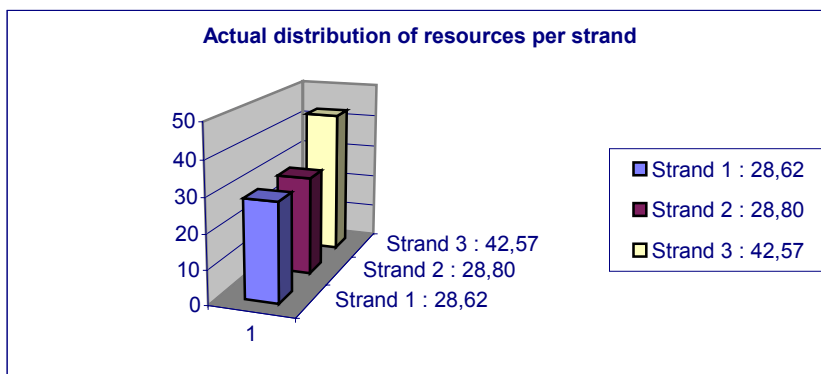
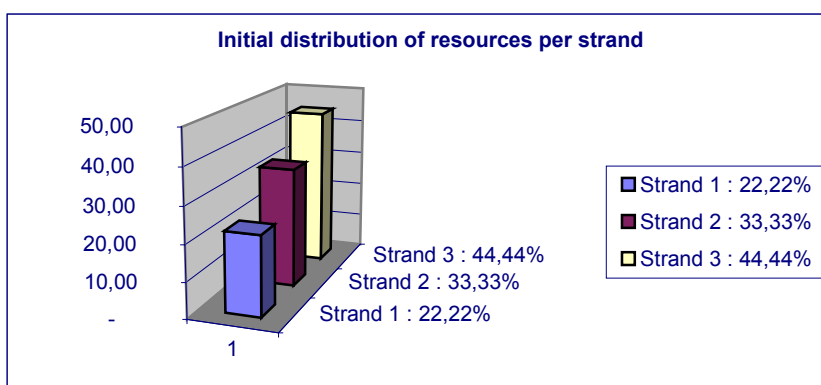
As to the nationality of the promoters of selected projects (see below the attached chart), Italy comes first with 12 proposals, followed by Belgium with 8 proposals selected, United Kingdom (6), Germany and Spain tie for fourth place (with 5 proposals each), France and Portugal are placed equal fifth (with 2 proposals each), Denmark, Greece, The Netherlands and Sweden come at the end with 1 proposal each. Four Member States do not appear among the selected projects : Austria (though 1 proposal had been received), Finland (1), Ireland (3) and Luxembourg (2).

I	12	26,08696
B	8	17,3913
UK	6	13,04348
D	5	10,86957
E	5	10,86957
F	3	6,521739
P	3	6,521739
DK	1	2,173913
EL	1	2,173913
NL	1	2,173913
S	1	2,173913
A	0	0
FIN	0	0
IRL	0	0
L	0	0

46



Proposals had to be for projects totalling more than € 100 000 and the proposed duration of the actions could not be longer than 18 months. Community funding to the selected projects, which last on average for 15,6 months, cover a maximum of 80% of total project cost. The total amount allocated to these transnational proposals is € 7 381 539,24, and the actual distribution of resources per strand is quite in line with the initial allocation for each priority area (see below the attached chart), with a slight difference between strand 1 and 2:



4.1. List of selected projects divided up by priority areas for cooperation

Priority areas	Organisation selected	Title of the Project	Promoter's country
Strand 1: Conducting and disseminating research making for a better understanding of social exclusion	Institut für Finanzdienstleistungen e.v.	Financial literacy: financial services, education and social exclusion	D
	Accademia europea di Bolzano / Europäische Akademie Bozen	Legal indicators for social inclusion of new minorities generated by immigration (LISI)	I
	Transport & Travel Teseach Ltd	Methodology for assessment of transport impacts of social exclusion (MATISSE)	UK
	The University of Birmingham	Measuring neighbourhood trajectories in understanding processes of social exclusion	UK
	El Sur - piccola società cooperativa a responsabilità limitata	Le cause e le dinamiche dell'esclusione sociale degli immigrati in europa. studio e analisi di tre casi: Danimarca, Italia e Spagna.	I
	Gesellschaft für berufsbildende Massnahmen e.v.	Step by step: the effectiveness of innovative approaches for democratic participation, individual counselling and networking of local services in the fight against the social exclusion of young people	D
	Stadt Göttingen, Amt für Beschäftigungsförderung	Strategies&effects - transnational research on unexpected effects of local strategies against social exclusion	D
	Associazione per la Pace onlus	The kurdish population in europe: asylum right and social rights	I
	Hoger instituut voor de arbeid (catholic university of Leuven)	Minimum income as the social protection of last resort : safety net, trap and/or springboard ?	B
	Vlaams forum armoedebestrijding	Indicateurs de pauvreté par le croisement des savoirs à partir des personnes vivant en pauvreté	B
National technical university of athens, research committee	Field study of ex-convicts' reintegration into labour market and social life	EL	

Priority areas	Organisation selected	Title of the Project	Promoter's country
Strand 2: Action to help the most vulnerable	Comune Di Forli'	Immigrated Women Health Access - Iwaha	I
	Ulf- Udviklingshæmmedes Landsforbund	Social Inclusion For Europeans With Learning Disabilities - A Community Compact (The Compact Project)	DK
	COO.S.S. Marche A R. L. – Cooperativa Sociale ONLUS	MEPESE - Methods to prevent elderly social exclusion	I
	The Bridge Child Care Development Service	Children In State Care And Mental Health	UK
	European Association Of Service Providers For Persons With Disabilities	Combating against discrimination towards community based settings for persons with disabilities: Tolerance or acceptance?	B
	Associação Fernão Mendes Pinto	Projecto Ineu: Para A Inclusao Social De Crianças E Jovens Na Europa	P
	Solco S.R.L. - Servizi Per l'Organizzazione Del Lavoro E La Creazione Di Occupazione	Alcohol & the workplace - a european comparative study on preventive and supportive measures for problem drinkers in their working environment	I
	INDE, Organização Cooperativa Para A Intercooperação E O Desenvolvimento, CRL	ACACIA	P
	Sign	Sign Net	UK
	Fondazione Istituto Andrea Devoto	Pelican Preparazione Di Una Rete Di Inclusione	I
	Istituto Antonio Provolo	Kaleidos: Modello Di Servizi Integrati Per Il Benessere Dei Non Uidenti	I
	Fédération Des Centres d'Insertion	A la recherche d'actions moins excluantes (R.A.M.E.)	F
	European Forum For Child Welfare	Families under stress - Supporting services in Europe	B
	Asociación De Mujeres Para La Reinserción Laboral	Estrategias para la inclusion: estudio de las competencias clave para empleabilidad en los colectivos en riesgo de exclusion.	E

Priority areas	Organisation selected	Title of the Project	Promoter's country
Strand 3: Promoting innovative approaches in policies for combating exclusion through the exchange of good practices	Fosie Stadsdelsförvaltning	European to local innovation for best practice policy development combating social exclusion, ELIPSE	S
	Confederación De Empresarios De Aragón	Networking For The Labour Insertion Of The Excluded Immigrants -IMINET-	E
	Instituto Municipal De Formación Y Empleo, Ayuntamiento De Granada	IMPAREM, participated research: co-operation on the search of new approaches for the social and labour integration of people in situation / risk of social exclusion	E
	Amitié	CAMEO (Comparison and Analysis of Mentoring in Europe)	I
	Associazione Irene – Iniziative, Ricerche Esperienze Nuova Europa	I.W.I. Immigrated Women Integration - The European Network Against Social Exclusion	I
	Union Nationale Interfédérale Des Organismes Privés Sanitaires Et Sociaux	Participation et Partenariat Au Service de L'insertion et de La Citoyenneté	F
	Royal National Institute For The Blind	The Employment Continuum	UK
	Centro Di Solidarieta' Di Reggio Emilia	Partnership Vs Esclusion	I
	Steunpunt Mensen Zonder Papieren Vzw.	Book of solidarity	B
	Verein Niedersächsischer Bildungsinitiativen E.V.	SOLICOM III : EASI - European action for social inclusion	D
	Associazione On The Road	MARGINALIA: Tra le righe fuori dai margini letture e risposte multidimensionali all'emarginazione	I
	The Quest Trust	HERMES	UK
	Association For Innovative Cooperation In Europe	Overcoming Fragmentation - New Forms Of Partnership In Combating And Preventing Social Exclusion	B
	Caisse Centrale De La Mutualité Sociale Agricole	PACE AVENIR, Prévenir Agir Contre L'exclusion Attitudes Volontaires Pour L'émergence de Nouvelles Pratiques d'inclusion en Milieu Rural	F
	Bundesarbeitsgemeinschaft Seniorenbüros E.V.	Entwicklung innovativer Konzepte zur sozialen Integration alterer Migranten/Innen	D
	Confédération Européenne Des Coopératives De Travail Associé, Des Coopératives Sociales Et Des Entreprises Participatives	L'entreprise sociale lutte contre l'exclusion par l'insertion économique et sociale: ELEXIES	B
	Ayuntamiento De Barcelona, Sector De Servicios Personales	Buenos Vecinos: Definicion De Un Nuevo Modelo De Apoyo A Las Personas Mayores Que Viven Solas	E
	Associação Para O Desenvolvimento Dos Recursos Humanos	BASICS - Basic Approaches To Social Inclusion By Cooperative Strategies	P
	Unión De Cooperativas Madrileñas De Trabajo Asociado	From outsiders to insiders	E
	Eurocities	CASE (Cities' Actions To Combat Social Exclusion)	B
European Offender Employment Forum	What Works With Offenders?	NL	

4.2. List of selected projects divided up by country applying

MS	Strand N°	Organisation selected	Title of the Project
B	1	Hoger Instituut voor de Arbeid (Catholic University of Leuven)	MINIMUM INCOME AS THE SOCIAL PROTECTION OF LAST RESORT : SAFETY NET, TRAP AND/OR SPRINGBOARD ?
B	1	Vlaams Forum Armoedebestrijding	INDICATEURS DE PAUVRETE PAR LE CROISEMENT DES SAVOIRS A PARTIR DES PERSONNES VIVANT EN PAUVRETE
B	2	European Association of Service Providers for Persons with Disabilities	COMBATING AGAINST DISCRIMINATION TOWARDS COMMUNITY BASED SETTINGS FOR PERSONS WITH DISABILITIES: TOLERANCE OR ACCEPTANCE?
B	2	European Forum for Child Welfare	FAMILIES UNDER STRESS - SUPPORTING SERVICES IN EUROPE
B	3	ASSOCIATION FOR INNOVATIVE COOPERATION IN EUROPE	OVERCOMING FRAGMENTATION - NEW FORMS OF PARTNERSHIP IN COMBATING AND PREVENTING SOCIAL EXCLUSION
B	3	Confédération Européenne des Coopératives de Travail Associé, des Coopératives Sociales et des Entreprises Participatives	L'ENTREPRISE SOCIALE LUTTE CONTRE L'EXCLUSION PAR L'INSERTION ECONOMIQUE ET SOCIALE: ELEXIES
B	3	EUROCITIES	CASE (CITIES' ACTIONS TO COMBAT SOCIAL EXCLUSION)
B	3	Steunpunt Mensen Zonder Papieren vzw.	BOOK OF SOLIDARITY
D	1	Gesellschaft für Berufsbildende Massnahmen e.V.	STEP BY STEP: THE EFFECTIVENESS OF INNOVATIVE APPROACHES FOR DEMOCRATIC PARTICIPATION, INDIVIDUAL COUNSELLING AND NETWORKING OF LOCAL SERVICES IN THE FIGHT AGAINST THE SOCIAL EXCLUSION OF YOUNG PEOPLE
D	1	Institut für Finanzdienstleistungen e.V.	FINANCIAL LITERACY: FINANCIAL SERVICES, EDUCATION AND SOCIAL EXCLUSION
D	1	Stadt Göttingen, Amt für Beschäftigungsförderung	STRATEGIES&EFFECTS - TRANSNATIONAL RESEARCH ON UNEXPECTED EFFECTS OF LOCAL STRATEGIES AGAINST SOCIAL EXCLUSION
D	3	Bundesarbeitsgemeinschaft Seniorenbüros e.V.	ENTWICKLUNG INNOVATIVER KONZEPTE ZUR SOZIALEN INTEGRATION ALTERER MIGRANTEN/INNEN
D	3	Verein Niedersächsischer Bildungsinitiativen e.V.	SOLICOM III : EASI - EUROPEAN ACTION FOR SOCIAL INCLUSION
DK	2	ULF- Udviklingshæmmedes Landsforbund	SOCIAL INCLUSION FOR EUROPEANS WITH LEARNING DISABILITIES - A COMMUNITY COMPACT (THE COMPACT PROJECT)
E	2	Asociación de Mujeres para la Reinserción Laboral	ESTRATEGIAS PARA LA INCLUSION: ESTUDIO DE LAS COMPETENCIAS CLAVE PARA EMPLEABILIDAD EN LOS COLECTIVOS EN RIESGO DE EXCLUSION.
E	3	Ayuntamiento de Barcelona, Sector de Servicios Personales	BUENOS VECINOS: DEFINICION DE UN NUEVO MODELO DE APOYO A LAS PERSONAS MAYORES QUE VIVEN SOLAS
E	3	CONFEDERACIÓN DE EMPRESARIOS DE ARAGÓN	NETWORKING FOR THE LABOUR INSERTION OF THE EXCLUDED IMMIGRANTS -IMINET-
E	3	Instituto Municipal de Formación y Empleo, Ayuntamiento de Granada	IMPAREM, PARTICIPATED RESEARCH: CO-OPERATION ON THE SEARCH OF NEW APPROACHES FOR THE SOCIAL AND LABOUR INTEGRATION OF PEOPLE IN SITUATION / RISK OF SOCIAL EXCLUSION
E	3	Unión de Cooperativas Madrileñas de Trabajo Asociado	FROM OUTSIDERS TO INSIDERS
EL	1	National Technical University of Athens, Research Committee	FIELD STUDY OF EX-CONVICTS' REINTEGRATION INTO LABOUR MARKET AND SOCIAL LIFE
F	2	Fédération des Centres d'Insertion	A LA RECHERCHE D'ACTIONS MOINS EXCLUANTES (R.A.M.E.)
F	3	Caisse Centrale de la Mutualité Sociale Agricole	PACE AVENIR, PREVENIR AGIR CONTRE L'EXCLUSION ATTITUDES VOLONTAIRES POUR L'EMERGENCE DE NOUVELLES PRATIQUES D'INCLUSION EN MILIEU RURAL
F	3	Union Nationale Interfédérale des Organismes Privés Sanitaires et Sociaux	PARTICIPATION ET PARTENARIAT AU SERVICE DE L'INSERTION ET DE LA CITOYENNETE
I	1	Accademia Europea di Bolzano / Europäische Akademie Bozen	LEGAL INDICATORS FOR SOCIAL INCLUSION OF NEW MINORITIES GENERATED BY IMMIGRATION (LISI)
I	1	ASSOCIAZIONE PER LA PACE ONLUS	THE KURDISH POPULATION IN EUROPE: ASYLUM RIGHT AND SOCIAL RIGHTS
I	1	El Sur Piccola Società Cooperativa a Responsabilità Limitata	LE CAUSE E LE DINAMICHE DELL'ESCLUSIONE SOCIALE DEGLI IMMIGRATI IN EUROPA. STUDIO E ANALISI DI TRE CASI: DANIMARCA, ITALIA E SPAGNA.
I	2	COMUNE DI FORLI'	IMMIGRATED WOMEN HEALTH ACCESS - IWHA
I	2	COO.S.S. Marche a R. L. - Cooperativa Sociale ONLUS	MEPESE - METHODS TO PREVENT ELDERLY SOCIAL EXCLUSION
I	2	Fondazione Istituto Andrea Devoto	PELICAN PREPARAZIONE DI UNA RETE DI INCLUSIONE
I	2	Istituto Antonio Provolo	KALEIDOS: MODELLO DI SERVIZI INTEGRATI PER IL BENESSERE DEI NON UDENTI
I	2	Solco S.r.l. - Servizi per l'Organizzazione del Lavoro e la Creazione di Occupazione	ALCOHOL & THE WORKPLACE - A EUROPEAN COMPARATIVE STUDY ON PREVENTIVE AND SUPPORTIVE MEASURES FOR PROBLEM DRINKERS IN THEIR WORKING ENVIRONMENT
I	3	AMITIE	CAMEO (COMPARISON AND ANALYSIS OF MENTORING IN EUROPE)
I	3	Associazione Irene - Iniziative, Ricerche Esperienze Nuova Europa	I.W.I. IMMIGRATED WOMEN INTEGRATION - THE EUROPEAN NETWORK AGAINST SOCIAL EXCLUSION
I	3	Associazione On the Road	MARGINALIA: TRA LE RIGHE FUORI DAI MARGINI LETTURE E RISPOSTE MULTIDIMENSIONALI ALL'EMARGINAZIONE
I	3	CENTRO DI SOLIDARIETA' DI REGGIO EMILIA	PARTNERSHIP VS EXCLUSION

NL	3	EUROPEAN OFFENDER EMPLOYMENT FORUM	WHAT WORKS WITH OFFENDERS?
P	2	Associação Fernão Mendes Pinto	PROJECTO INEU: PARA A INCLUSAO SOCIAL DE CRIANCAS E JOVENS NA EUROPA
P	2	INDE, Organização Cooperativa para a Intercooperação e o Desenvolvimento, CRL	ACACIA
P	3	Associação para o Desenvolvimento dos Recursos Humanos	BASICS - BASIC APPROACHES TO SOCIAL INCLUSION BY COOPERATIVE STRATEGIES
S	3	Fosie stadsdelsförvaltning	EUROPEAN TO LOCAL INNOVATION FOR BEST PRACTICE POLICY DEVELOPMENT COMBATING SOCIAL EXCLUSION, ELIPSE
UK	1	The University of Birmingham	MEASURING NEIGHBOURHOOD TRAJECTORIES IN UNDERSTANDING PROCESSES OF SOCIAL EXCLUSION
UK	1	Transport & Travel Research Ltd	METHODOLOGY FOR ASSESSMENT OF TRANSPORT IMPACTS OF SOCIAL EXCLUSION (MATISSE)
UK	2	SIGN	SIGN NET
UK	2	The Bridge Child Care Development Service	CHILDREN IN STATE CARE AND MENTAL HEALTH
UK	3	ROYAL NATIONAL INSTITUTE FOR THE BLIND	THE EMPLOYMENT CONTINUUM
UK	3	THE QUEST TRUST	HERMES

5. DESCRIPTION OF PROPOSALS SELECTED IN THE FRAMEWORK OF THE CALL FOR PROPOSALS VP/2001/014

The following information concerning the applicants and their projects has been gathered from the application form given by the main promoters of the proposal and commits only themselves.

Supplementary information on the projects can be obtained directly from the project promoters or from the project partners. You may also contact DG Employment and Social Affairs, Unit E2 Social Protection and inclusion policies, through e-mail: empl-e2@cec.eu.int

5.1. ASSOCIAZIONE PER LA PACE ONLUS

Title of the project:

THE KURDISH POPULATION IN EUROPE: ASYLUM RIGHT AND SOCIAL RIGHTS

Duration (*in month*): 12 Estimated total cost (in €): 103 423,37 Granted amount:

Identification ref. (SAGA n°): 2001/E2/014/1002

Lead Organisation:

ASSOCIAZIONE PER LA PACE ONLUS

via Salaria, 89
I-00198 Roma
Tel: +39 068841958
Fax: +39 068841749
e-mail: info@assopace.org
Website: www.assopace.org

Contact Name:

Dott. Davide BERRUTI

assopace.nazionale@assopace.org

Type/Legal Status of organisation:

Private Non-Profit Making
Organisation (NGO)

Member States involved:

Italy, Germany, France, Sweden

Priority area for cooperation: 1

Conducting and disseminating research making for a better understanding of social exclusion.

Grounds of Social Exclusion to be addressed:

Access to services for migrants

Target group:

Kurdish Population; minors; women

Main objectives / Summary of the project:

A one-year research project to study the socio-economic situation of Kurdish refugees (with particular attention to the situation of women and of minors) who are already living in the countries of the European Union. The aim of the project is to encourage active participation on the part of the people concerned so that they can learn how to access services, improve the quality of their lives and so prevent the types of exclusion that can arise in various parts of the social security

system in the countries of the EU where Kurdish people are living and are to some extent already integrated in the socio-economic system of the country concerned. The social situation that is revealed will be compared in a monitoring exercise covering four Member States – France, Germany, Italy and Sweden.

Partners involved in the project:

**UIKI – ONLUS UFFICIO
INFORMAZIONE DEL KURDISTAN IN
ITALIA**

Contact person : Bengin Aksu
Project coordinator : Francesca
Gianfelice
Via Quintini Sella, 41
IT-00187 Roma
Tel: 00390642013576
Fax: 00390642013799
uiki.onlus@tin.it

**KURDISTAN INFORMATIONS-
ZENTRUM E.V.**

Contact person : Songul Karabulut
Project coordinator : Selin Busse
Kaiser – Friedrich – str. 63
D-10627 Berlin
Tel: 00493032764023
Fax: 00493032764028
kurdistaniz@aol.com

**CENTRE D'INFORMATION DU
KURDISTAN**

Contact person : Doru Eyyup
Project coordinator : Celine Leroux
147, rue Lafayette
F-75010 Paris
Tel: 0033140164489
Fax : 0033140164723
cik@wanadoo.fr
ONG

KURDISKA INSTITUTET I STOCKHOLM

Contact person : Husein Kurnijad
Project coordinator : Taloyan Marina
Fridhemsgatan 15 3TR
SE-11240 Stockholm
Tel: 0046703447426
Fax: 0046865243330
kurdiskainstitue@hotmail.com
NGO

5.2. Accademia Europea di Bolzano / Europäische Akademie Bozen - EURAC

Title of the project:

LEGAL INDICATORS FOR SOCIAL INCLUSION OF NEW MINORITIES GENERATED BY IMMIGRATION (LISI)

Duration (*in month*): 18 Estimated total (€) : 174 079,27 Granted amount:

Identification ref. (SAGA n°): 2001/E2/014/1004

Lead Organisation:

ACCADEMIA EUROPEA DI BOLZANO / EUROPÄISCHE AKADEMIE BOZEN - EURAC

Weggensteinstraße 12/a
IT-39100 Bolzano
Tel: +39 0471306121
Fax: +39 0471306199
e-mail: infofb2@eurac.edu
Website: www.eurac.edu

Contact Name:

Dr. Werner STUFLESSER
werner.stuflessen@eurac.edu

Type/Legal Status of organisation:

Research Institute, NGO

Member States involved:

Italy, United-Kingdom, Austria

Priority area for cooperation: 1

Conducting and disseminating research for a better understanding of social exclusion

Grounds of Social Exclusion to be addressed:

Migrants

Target group:

Ethnic minorities

Main objectives / Summary of the project:

The project aims at :

1. Identifying, analysing and comparing conditions and processes leading to social exclusion of new minorities originating from immigration
2. Devising common legal indicators for the target group with the active and direct involvement of stakeholders

3. Widening the debate : dissemination, awareness rising and public consultation on proposed set of indicators

Each Phase consists of a series of activities, including one international and three local workshops, an open discussion forum and a major publication. The proposed activities will include in depth analyses and comparative evaluation of social exclusion experienced by this specific category of new minorities, identification of a set of legal indicators to measure this type of phenomenon in a wide context, experience and knowledge sharing, dialogue and network building, dissemination of substantive insights gained through the activities and awareness raising.

Partners involved in the project:

THE AIRE CENTRE

Contact person: Nicola Rogers
Unit 74 Eurolink Business Centre
49 Effra Road
London
SW2 1BZ
United Kingdom
Tel : (44) 2079249233
Fax : (44) 2077336786
aire@btinternet.com
Non-governmental organisation

**EUROPEAN TRAINING AND RESEARCH CENTRE FOR HUMAN RIGHTS AND
DEMOCRACY (ETC)**

Contact person : Dr. Gerd Oberleitner

Project coordinator : Mag. Alice Prutsch

Schubertstrasse 29

A – 8010 Graz

Tel : +43 316 322 8881

Fax : +43 316 322 8884

Office@etc-graz.at

Non-governmental

5.3. Associação para o Desenvolvimento dos Recursos Humanos - ADERE

Title of the project:

BASICS - BASIC APPROACHES TO SOCIAL INCLUSION BY COOPERATIVE STRATEGIES

Duration (*in month*): 18 Estimated total cost (in €): 179 068,39 Granted amount:

Identification ref. (SAGA n°): 2001/E2/014/1006

Lead Organisation:

ASSOCIAÇÃO PARA O DESENVOLVIMENTO DOS RECURSOS HUMANOS - ADERE

Rua das Flores, nº 5-B, Centro Comercial
Sommer, Sala 4/11
PT - 2800 - 078 Almada
Tel: +351.21.274.87.59
Fax: +351.21.386.07.72
e-mail: rdd85274@mail.telepac.pt
Website: None

Contact Name:

Dr. Dra Ana LUCENA
rdd85274@mail.telepac.pt

Type/Legal Status of organisation:

Private Non-Profit Making
Organisation (NGO)

Member States involved:

Portugal, Netherlands, Germany, Italy, Spain

Priority area for cooperation: 3

Promoting innovative approaches in policies for combating exclusion through the exchange of good practice

Grounds of Social Exclusion to be addressed:

Access to rights, goods and services; access to labour market, access to social and legal services

Target group:

Immigrants and refugees, ethnic and cultural minorities, long-term unemployed, youngsters in disruption, ex-offenders and ex-drug abusers and cases of extreme poverty

Main objectives / Summary of the project:

Project generic focus will be social inclusion and citizenship-granting pathways allowing or facilitating the access of socially vulnerable persons to: basic rights and commodities, employment, social recognition and participation in community life. Project objectives are to be achieved by means of the joint and strongly

committed action of a 5 Members/5 Countries European transnational partnership, that will be engaged in performing the following five main project activities:

1-Identification and recording of prospective Good Practices and innovative measures, at national/regional level, by each Partner in cooperation with the relevant Agencies concerned

2-Debate on the preliminary assessed findings and conclusions and determination of selection criteria, display frames and detailed dissemination procedures (both at national and transnational levels)

3-Detailed reporting and further illustration on the selected cases and pre-edition of the materials concerned

4-Final edition of the materials, by means of digital support (CD ROM and/or Web-site)

5-Dissemination of project outcomes, including one national workshop/conference in each participating Country and public disclosure of project results and material outputs (mailing ; internet ; Agencies-relay)

Partners involved in the project:

VEB – DAS EUROPAISCHE BILDUNGSINSTITUT

Contact person : Christian Sauter

Richard-Wagner-Strasse 11-13

D-28209 Bremen

Tel : +49 (0)421 3499430

Fax : +49 (0)421 3499127

mail@veb.org

Private, non profit

ACTIVA BV

Contact person : Mr. G.J. Bakker

Project coordinator : Mr. W.M. de Mol

PO Box 482

NL-7500 AL Enschede

Tel: +31 53 4814436

Fax :+31 53 4814487

m.d.mol@activa.nl

Private

SISTEMAS TÉCNICOS DE ENSEÑANZA CONSULTORES S. L.

Contact person : Núria de la Fuente

Teixidó

Avenida de los Guindos nº 20, 2º

E-29004 Málaga

Tel : +34 952 23 61 83

Fax : +34 952 23 51 65

ateneas@retemail.es

Private

ARCI NUOVA ASSOCIAZIONE – DIREZIONE NAZIONALE

Contact person : Roberto Tavani

Via Monti di Pietralata 16

IT-00157 Roma

Tel : +390641609236

Fax : +390641609232

lapis@arci.it

Social Promotion Association

5.4. Associação Fernão Mendes Pinto

Title of the project:

PROJECTO INEU: PARA A INCLUSÃO SOCIAL DE CRIANÇAS E JOVENS NA EUROPA

Duration (*in month*): 18 Estimated total cost (in €): 222 710,49 Granted amount:

Identification ref. (SAGA n°): 2001/E2/014/1007

Lead Organisation:

ASSOCIAÇÃO FERNÃO MENDES PINTO

Rua Dr. José Galvão n° 211 Apartado 9

PT- 3140 - 853 Montemor-o-Velho

Tel: + 351 239 687 170

Fax: + 351 239 687 175

e-mail: afmp@esoterica.pt

Website: —

Contact Name:

Sr. Victor Manuel Forte
CAMARNEIRO

afmp@esoterica.pt

**Type/Legal Status of
organisation:**

Private Non-Profit Making
Organisation (NGO)

Member States involved:

Portugal, Italy, Germany, Spain

Priority area for cooperation: 2

Action to help the most vulnerable

Grounds of Social Exclusion to be addressed:

Access to education and training; school drop-out

Target group:

Children and young people

Main objectives / Summary of the project:

The *INEU* is aimed at deepening knowledge of the phenomena determining social exclusion as experienced by children and young people. Special attention will be devoted to generational exclusion and the importance of education as a basic strategy for halting the cycle of generational exclusion.

Aims:

A. To deepen knowledge on the phenomenon of social exclusion as experienced by children and young people;

B. To assess systematically the need and determine courses of action that will break the mould of generational social exclusion;

C. To organise information/awareness-raising campaigns aimed at persons who owing to their work are directly involved in securing social and occupational integration, with special emphasis on the links with education as a basic strategy for establishing equal opportunities at various levels within society.

Partners involved in the project:

COO.S.S. MARCHE SCRL

Contact person : Ms Susy Sartini
Project coordinator : Ms Francesca
Cesaroni
Via Saffi n. 4 -
IT- 60121 Ancona
Tel: +39 071 5010 31
Fax : +39 071 50103206
ricerca8@cooss.marche.it;
ricerca2@cooss.marche.it;
Private - Cooperative providing social and
health services

BUNDESARBEITSGEMEINSCHAFT

EVANGELISCHE JUGENDSOZIALARBEIT (BAG EJSA)

Contact person : Hans Steimle
Project coordinator : Sandra Kröger
Wagenburgstr. 26-28
D - 70184 Stuttgart
Tel : +49-711-16489-23
Fax : +49-711-1648921
kroeger@bagejsa.de
Non-profit making organisation - NGO

FOUNDATION MARÍA AURÈLIA

CAPMANY

Contact person :
- Rosa M^a Dumenjó Martí
Project coordinators :
- Lidia Vaquero Merediz
- Carolina ° Mas
Rambles, 81
E-08002 Barcelona
Tel : +34 93 301 11 95
Fax : +34 93 301 07 63
fmac@bitmailer.net
Private – non-governmental
Foundation

5.5. AMITIE

Title of the project:

CAMEO (COMPARISON AND ANALYSIS OF MENTORING IN EUROPE)

Duration (*in month*): 18 Estimated total cost (in €): 246 584,57 Granted amount:

Identification ref. (SAGA n°): 2001/E2/014/1013

Lead Organisation:

AMITIE

Via Val d'Aposa 3
IT-40123 Bologna
Tel: +39/051/65 60 401
Fax: +39/051/65 60 402
e-mail: amitie@amitie.it
Website: www.amitie.it

Contact Name:

Mr Pier Giacomo SOLA
pgsola@amitie.it

Type/Legal Status of organisation:

Private / Research Institute

Member States involved:

Italy, France, Greece, Spain

Priority area for cooperation: 3

Promoting innovative approaches in policies for combating exclusion through the exchange of good practices.

Grounds of Social Exclusion to be addressed:

Youth facing alcohol and drug use, teen pregnancy, educational failure, gangs and violence.

Target group:

Youth

Main objectives / Summary of the project:

CAMEO (Comparison and Analysis of Mentoring in EurOpe) intends to carry out a systematic study that draws a complete picture of the role of “the mentor”, the relative functions assigned to this figure as well as quality assurance standards of mentor programmes and different Member States with different experiences due to different approaches. Indeed the aim of the proposal is to analyse the definition and development of the “mentor” role in different partner countries, investigate the contexts where he/she works, provide a professional description whilst revealing the existing differences in terms of meaning and duties between each

partner country, in order to compare the evolution of this figure at European level. Actions: - analysis of the role of mentor; - analysis of the competences requested to the mentor;- analysis of the role of private and public institutions which supply mentoring services, investigating their field of action, their mutual relationship and their official recognition. - identification, analysis and evaluation of best practices and models on mentoring at European level;- awareness raising;- editing of a final reports;- organisation of a final transnational conference.

Partners involved in the project:

**CHAMBRE RÉGIONALE DE COMMERCE
ET D'INDUSTRIE DE BRETAGNE /
EUROCRIF**

Contact person : Vincenette Durand
1 rue Général Guillaudot
CS 14422
F - 35044 Rennes Cedex
Tel : +33 (0)2 99 25 41 74 ou 67
Fax : +33 (0)2 99 25 41 07
Vincenette.Durand@bretagne.cci.fr ou
Marie-Claude.Guerrier@bretagne.cci.fr

**CHAMBER OF COMMERCE AND
INDUSTRY**

IAL TOSCANA
Contact person : Viviana Viviani
Via Ponte di mezzo n°56
IT-50127 Firenze
Tel : +39 055 3215240
Fax : +39 055 3249063
v.viviani@ialtoscana.it
No-profit training organisation

**ISFOL – OSSERVATORIO
SULL'INCLUSIONE SOCIALE**

Contact person : Alessandra Felice
Via Morgagni 30/e
IT-00161 Roma
Tel : +39-0644590420/441
Fax : +39-0644590442
ois@isfol.it
Public

KEMOP

Contact person : Guido Scagno
Project coordinator : Alexandros
Athanasoulis
Km. 7, Ethniki Odos Antirriou-Nafpaktou
EL- 30300 Nafpaktos
Greece
Tel : +30 634 29486
Fax : +30 634 23431
kemop@hol.gr
NGO (Non Governmental Organisation)

SCIENTER ESPAÑA

Contact person : M. Begoña Arenas
Project coordinator : Claudio Dondi
Fray Leopoldo de Alpanseire 4 3º dcha.
E- Granada 18014
Tel : +34 958 80 65 90
Fax : +34 958 80 65 91
barenas@scienter.es
Private

5.6. Associazione On the Road

Title of the project:

MARGINALIA: TRA LE RIGHE... FUORI DAI MARGINI – LETTURE E RISPOSTE
MULTIDIMENSIONALI ALL'EMARGINAZIONE

Duration (*in month*): 18 Estimated total cost (in €): 153 000 Granted amount:

Identification ref. (SAGA n°): 2001/E2/014/1020

Lead Organisation:

ASSOCIAZIONE ON THE ROAD

Via delle Lancette, 27-27/A
IT - 64014 MARTINSICURO (TE)
Tel: +39.0861.796666 - 762327
Fax: +39.0861.765112
e-mail: ontheroad@advcom.it
Website: www.
associazioneontheroad.it

Contact Name:

Dott. Roberto GOBBATO
ontheroad@advcom.it

Type/Legal Status of organisation:

Private Non-Profit Making
Organisation (NGO)

Member States involved:

Italy, France, Spain, Portugal, Belgium, Greece

Priority area for cooperation: 3

Promoting innovative approaches in policies for combating exclusion through the exchange of good practices

Grounds of Social Exclusion to be addressed:

Le tipologie di marginalità sociale da prendere in considerazione saranno quelle fluide, pluridimensionali e spesso sovrapposte legate:

- alla prostituzione
- all'immigrazione e alla clandestinità
- all'uso di sostanze stupefacenti
- al traffico (di esseri umani, di droga e di armi)
- all'identità di genere

Target group:

Migrants; Homeless; Undocumented migrants; Drug addicted; Minors; Trafficked human beings

Main objectives / Summary of the project:

The aim of the project is to tackle, at European level and in a holistic way, the multidimensional nature of the vast area of marginalisation that is normally approached on a category-by-category basis. Its main features are the merging and the superimposition of various phenomena (prostitution, immigration, illicit labour, human trafficking, drug addiction, deviant behaviour in the after-dark community, street life etc. that affect various groups of people who are excluded from society. The aim is to improve the guidance and effectiveness of policies aimed at social integration. Action: to study the correlation between the broad area of marginalisation, the policies and strategies for action and to study, exchange and devise innovative and across-the-board models for courses of action and ensure wide European coverage. Our extensive network of partners will produce research-with-action at European level on multidimensional marginalisation, a European Telematics area for Research and Documentation on Marginalisation, research-with-action at European level on models for courses of action, exchanges of views on the models with field visits and staff exchanges, two laboratories for the development of targeted strategies for across-the-board/innovative models, a bilingual book (4 000 copies) and a concluding transnational conference.

Partners involved in the project:

REGIONE EMILIA-ROMAGNA

Contact person : Ms Cinzia Ioppi

Viale Aldo Moro 38

IT-40127 Bologna

Tel : +39 051 283544

Fax : +39 051 283911

Cioppi@regione.emilia-romagna.it

Public administration

PROVINCIA DI TERAMO

Contact person : Dr. Antonio Lagreca

Project coordinator : Prof. Luigi Puca

Via G. Milli 2

IT-64100 Teramo

Tel : +39 0861 3311 - 331201

Fax : +39 0861 331263

Presidenza@provincia.teramo.it

Public authority

REGIONE MARCHE - SERVIZI SOCIALI

Contact person : Mr Marcello Secchiaroli

Project coordinator : Ms Susanna Piscitelli

Via Gentile da Fabriano 9

IT- 60125 Ancona

Tel : +39 071 8062170

Fax : +39 071 8062171

m.secchiaroli@regione.marche.it

Public administration

COMUNE DI PERUGIA U.O. POLITICHE SOCIALI

SETTORE SERVIZI SOCIALI

Contact person : Ms Stefania Alunni

Breccolenti

Project coordinator : Mr Vincenzo

Castelli

Via Scarlatti 43

IT-06100 Perugia

Tel : +39 075 577 38 43

Fax : +39 075 577 39 16

s.breccolenti@comune.perugia.it

Public administration

FAMILY GUIDANCE CENTRE OF MUNICIPALITY OF ZOGRAFOU

Contact person : Evina D. Sagali

Project coordinator : Athina

Kokolodimitraki-Bonelli

26, J. Maratou Street & Evrinomis

EL-15771 Zografou

Tel : +30 1 0 7793622 - 7488382 - 7778052

Fax : +30 1 0 7488382

Evinasko@hol.gr

Private non-profit local organisation

**REDE EUROPEIA ANTI-POBREZA /
PORTUGAL - REAPN**

Contact person : Agostinho Cesário Jardim Morel
Project coordinator : Sérgio Aires
Rua de Costa Cabral 2368
PT-4200-218 Porto
Tel : +351 22 540 32 67
Fax : +351 22 540 32 50
Eapnp@mail.telepac.pt
Non-governmental network

**COORDINAMENTO NAZIONALE
COMUNITA' DI ACCOGLIENZA**

Contact person : Giorgio Bisirri
Project coordinator : Giuseppina De Angelis
Via Baglivi 8
IT-00161 Roma
Tel : +39 06 44 23 03 95
Fax : +39 06 44 11 74 55
Cnca.progetti@flashnet.it
Non-profit National Federation

GABINET D'ESTUDIS SOCIALS - GES

Contact person : Raúl Martínez
Aragó, 281, 2on. 2a.
E-08009 Barcelona
Tel : +34 93 487 38 16
Fax : +34 93 215 88 15
Ges@gabinet.com
Private organisation

VZW. PAYOKE

Contact person : Bruno Moens
Iraguit 4
B-2000 Antwerpen
Tel : +32 03 201 16 94/97
Fax : +32 03 233 23 24
Trafficking.payoke@yucom.be
Prostitutie.payoke@yucom.be
NGO

**HEALTH PROJECT ANTWERP
PROSTITUTION - UNIVERSITY OF
ANTWERP**

Contact person : Dr. Kristien Wouters
Project coordinator : Prof. Dr. Pierre
Van Damme
Centre for the Evaluation of Vaccination
Dept. Epidemiology and Social
Medicine
Universiteitsplein 1
B-2600 Wilrijk
Tel : +32 3 820 25 38
Fax : +32 3 820 26 40
Kriwout@uia.ua.ac.be
Pvdamme@uia.ua.ac.be
University

**UNIVERSITY OF THE AEGEAN, DEPT.
OF PRIMARY EDUCATION**

Contact person : Anastasia Tsamparli-
Kitsara
Democratias 1 ave.
EL-85100 Rhodes
Tel : +30 24 199 127
Fax : +30 24 199 127
Tsamparli@rhodes.aegean.gr
University - Public

5.7. Ayuntamiento de Barcelona, Sector de Servicios Personales

Title of the project:

"BUENOS VECINOS: DEFINICIÓN DE UN NUEVO MODELO DE APOYO A LAS PERSONAS MAYORES QUE VIVEN SOLAS"

Duration (*in month*): 18 Estimated total cost (in €): 184515,01 Granted amount:

Identification ref. (SAGA nº): 2001/E2/014/1028

Lead Organisation:

AYUNTAMIENTO DE BARCELONA, SECTOR DE SERVICIOS PERSONALES

Avda. Diagonal, 233
E-08013 Barcelona
Tel: +34 93 413 26 07
Fax: +34 93 413 26 52
e-mail: psolanes@mail.bcn.es
Website:

Contact Name:

Sr. Eduardo SPAGNOLO

Tel : +34 93 413 26 03

Type/Legal Status of organisation:

Local Authority

Member States involved:

Spain, Italy, France, The Netherlands, United Kingdom

Priority area for cooperation: 3

Promoting innovative approaches in policies for combating exclusion through the exchange of good practices

Grounds of Social Exclusion to be addressed:

Access to social services and resources for elderly

Target group:

Older people

Main objectives / Summary of the project:

Study of the exclusion situation of adults living alone in the cities of Barcelona, Milan, Lyon, Birmingham and Rotterdam on the basis of input from participants. A diagnosis of the situation of adults in these five cities. The production of a model for action, the "Good Neighbour model" to support adults living alone. A comparative study of other similar models plus transferability of the model.

Application in the city of Barcelona of the model so defined with dissemination of the results.

Partners involved in the project:

BIRMINGHAM AGEWELL INITIATIVE

Contact person : Michael B Scott
Project coordinator : Michael Scott
(Information/Administrative Worker and Jackie Hancox (Outreach Development Worker)
Institute of Ageing, Moseley Hall
Hospital, Alcester Road, Moseley,
Birmingham
B13 8JL
United Kingdom
Tel : +44 121 442 3501
Fax : +44 121 449 8360
BhamAgewell@aol.com
Joint Funded Project

REDS RED EUROPEA DE DIÁLOGO SOCIAL

Contact person : Katia Pistrin
Project coordinator : Eduard Balsebre
Trafalgar 25 2-2
E-08010 Barcelona
España
Tel : +34 93 319 47 52
Fax : +34 93 268 41 08
reds@redeuropea.org
NGO

HÔTEL DE VILLE DE LYON – DÉLÉGATION « PERSONNES AGÉES »

Contact person : Evelyn Haguenauer
Project coordinators : Annick Giroux;
Corinne Paul
1 place de la Comédie
BP 1065
F-63205 Lyon
Tel : + 33 (0) 472105232
Fax : + 33 (0) 472105255
Corinne.paul@mairie-lyon.fr
Public organisation

COMUNE DI MILANO – SERVIZI SOCIO SANITARI

Contact person : Francesca Feraboli
Project coordinator : Dott. Matteo Fiore
Largo Treves, 1
IT- 20100 Milano
Tel : +39-02 88463172
Fax : +39-02 88463163
Francesca.feraboli@comune.milano.it
Public organisation

DEPARTMENT OF SOCIAL AFFAIRS AND EMPLOYMENT CITY OF ROTTERDAM

Contact person : R.J. van Sluijs
Willem Ruijslaan 225
p.o. box 1024
NL- 3000 BA Rotterdam
Netherlands
Tel : +31 10 45 33 541
Fax : +31 10 45 21 271
Rj.vansluijs@sozawe.rotterdam.nl
Public, municipal

5.8. BaS - Bundesarbeitsgemeinschaft Seniorenbüros e.V.

Title of the project:

ENTWICKLUNG INNOVATIVER KONZEPTE ZUR SOZIALEN INTEGRATION ÄLTERER
MIGRANTEN/INNEN

Duration (*in month*): 18 Estimated total cost (in €): 150363,49 Granted amount:
Identification ref. (SAGA n°): 2001/E2/014/1035

Lead Organisation:

BAS - BUNDESARBEITSGEMEINSCHAFT SENIORENBÜROS E.V.

Graurheindorfer Straße 79
D-53111 Bonn
Tel: +49-228-614078
Fax: +49-228-614060
e-mail: hinn@seniorenbueros.org
Website: www.seniorenbueros.de

Contact Name:

Frau Gabriella Hinn
hinn@seniorenbueros.org

Type/Legal Status of organisation:

Private Einrichtung ohne
Erwerbszweck (NRO) / NGO

Member States involved:

Germany, Austria, The Netherlands, Belgium

Priority area for cooperation: 3

Promoting innovative approaches in policies for combating exclusion through the
exchange of good practice

Grounds of Social Exclusion to be addressed:

Access to resources, rights, social services, vocational training

Target group:

Elderly migrants

Main objectives / Summary of the project:

The aim of the project is to produce innovative models for the integration and
improvement of opportunities for older migrants in four different European
countries (A, B, D and NL). Emphasis is on projects and procedures to improve
the social integration, access to cultural and leisure facilities, education and the
promotion of voluntary commitment by older migrants to improve their own

situation. The activities will comprise the development of criteria to determine the innovative nature, organisation of a cross-border exchange of experience by establishing two workshops plus PR activities and the transfer of experience via reports and an internet presentation.

Partners involved in the project:

**INSTITUT FÜR
SOZIALWISSENSCHAFTLICHE
ANALYSEN UND BERATUNG**

Contact person : Joachim Braun
Overstolzenstr. 15
D-50677 Köln
Tel : +49 0221 41 20 94
Fax : +49 0221 41 70 15
Isab@isab-institut.de
Private Research Institute

**EUROPÄISCHES ZENTRUM FÜR
WOHLFAHRTSPOLITIK UND
SOZIALFORSCHUNG**

Contact person : Dr. Bernhard Perchinig
Berggasse 17
A-1090 Wien
Tel : +43 1 31 94 505 34
Fax : +43 1 31 94 505 59
Perchinig@euro.centre.org
Public Intergovernmental Organisation

**THE NETHERLANDS INSTITUTE FOR
CARE AND WELFARE - NIZW**

Contact person : Drs H.W. Mertens
PO Box 19152
NL- 3501 DD Utrecht
Tel : +31 30 230 63 11
Fax : +31 30 231 96 41
h.mertens@nizw.nl
Public organisation

**STEBO VZW STEUNPUNT
BUURTOPBOUWWERK**

Contact person : Griet Bouwen
Project coordinator : Jac De Bruyn
E. Coppélaan 91
B-3600 Genk
Tel : +32 89 32 95 30
Fax : +32 89 36 43 03
Griet.bouwen@stebo.be
NGO

5.9. CENTRO DI SOLIDARIETA' DI REGGIO EMILIA - CESRE

Title of the project:

PARTNERSHIP vs ESCLUSION

Duration (*in month*): 18 Estimated total cost (in €): 179846,51 Granted amount:

Identification ref. (SAGA n°): 2001/E2/014/1039

Lead Organisation:

CENTRO DI SOLIDARIETA' DI REGGIO EMILIA - CESRE

Via Reverberi, 3
IT-42100 Reggio Emilia
Tel: +39 0522 451800-452134
Fax: +39 0522 438542
e-mail: centro.studi@comune.re.it
Website: www.centro.solidarieta.re.it

Contact Name:

Dott. Giuseppe DOSSETTI

centro.solidarieta@re.nettuno.it

Type/Legal Status of organisation:

Private Non-Profit Making
Organisation (NGO)

Member States involved:

Italy, Germany, Spain, United Kingdom

Priority area for cooperation: 3

Promoting innovative approaches in policies for combating exclusion through the exchange of good practices

Grounds of Social Exclusion to be addressed:

Target group:

Main objectives / Summary of the project:

Main objectives

- a) the exchange of good practice and the best partnership experiences between Regional Administrations and No Profit Organisations in the respective areas as regards the planning/creation/evaluation of public policies in the campaign against marginalisation;
- b) assessment of the partnership method employed (collaboration/convergence) to construct a single public policy from the concept stage through to the assessment stage as a useful approach method to define campaigns against marginalisation which are: 1) efficient; 2) realistic; 3) sustainable.

Secondary objectives

1. Improve understanding of the social marginalisation phenomenon through:
a) full exploitation of No Profit Organisations as a source of awareness regarding the problem and the resources needed to face it; b) exchange of information and tasks between Public Administrations and civic organisations.
2. Organise transregional collaboration to strengthen the partnership culture, and exploit this collaboration to allow the group partners a more incisive participation in drawing up/creating national action programs.
3. Develop the capacity of the project target operators (Regional Administrations and No Profit Organisations) to tackle the problem of social marginalisation (as regards accommodation, culture, training, health, access to information, recreational activities, equal opportunities), bearing in mind the European extent of the phenomenon.
4. Construct efficient communication channels to consolidate the partnership after the project has ended.
5. Spread throughout the areas directly involved the partnership culture as an effective decision-making and participation method to create policies in the campaign against marginalisation on not just a local level. At least 80 public administrations will participate and 200 non profit organisations. One Regional Administration and one Non Profit Organisation from a total of another 8 countries will be involved as discussants in the project.

Partners involved in the project:

REGIONE EMILIA ROMAGNA

Contact name : Cinzia Ioppi
Viale Aldo Moro, 38
IT - 40127 Bologna
Tel : +39 051 283544
Fax : +39 051 283911
cioppi@regione.emilia-romagna.it
Public Administration

HESSISCHES SOZIALMINISTERIUM; ABTEILUNG GESUNDHEIT, REFERAT SUCHTHILFE

Contact name : Lothar Dicks
Leader of the section of drug addiction
Dostojewskistraße 4
D-65187 Wiesbaden
Tel : +49 611-817 3653
Fax : +49 611- 817 3651
l.dicks@hsm.hessen.de
Governmental

HESSISCHE LANDESSTELLE GEGEN DIE SUCHTGEFAHREN (HLS) E.V.

Contact name : Wolfgang Schmidt
Auf der Körnerwiese 5
D-60322 Frankfurt/Main
Tel : +49 69-5969621
Fax : +49 69-5969724
hls@hls-ksh.de
NGO

LONDON BOROUGH OF GREENWICH

Contact name : Maureen Walby
European Office, 3rd Floor
Peggy Middleton House
50 Woolwich New Road
London SE18 6HQ
United Kingdom
Tel : +44 208 921 6008
Fax : +44 208 921 5950
Maureen.walby@greenwich.gov.uk
Local Authority

**GREENWICH CO-OPERATIVE
DEVELOPMENT AGENCY**
Contact name : Sergio Olivares
Trafalgar Road
London SE10 9EQ
United Kingdom
Tel : +44 020 8269 4880
Fax : +44 020 8269 4899
info@gcda.org.uk
Non profit organisation

FUNDACION DIAGRAMA
Contact name : Francisco Legaz Cervantes
Project coordinator: Luis Pelegrin Calero
C/Virgen de los Dolores, n. 16 - Bajo
Aljucer
E-30152 Murcia
Tel : +34 968 344344
Fax : +37 968 344979
murciages@diagrama.org
Non profit organisation

SERVICIO MURCIANO DE SALUD
Contact name : Martin Quinonero Sánchez
Project coordinator : José Antonio Penalver
Pardinez
Ronda de Levante, 11 4 Planta-
Drogodependencias
E-30008 Murcia
Tel : +34 968 362070
Fax : +34 968 201612
Jantonio.Penalver@carm.es
Regional public authority

5.10. Caisse Centrale de la Mutualité Sociale Agricole - CCMSA

Title of the project:

PACE AVENIR, PRÉVENIR AGIR CONTRE L'EXCLUSION ATTITUDES VOLONTAIRES POUR L'EMERGENCE DE NOUVELLES PRATIQUES D'INCLUSION EN MILIEU RURAL

Duration (*in month*): 12 Estimated total cost (in €): 242986,65 Granted amount:

Identification ref. (SAGA n°): 2001/E2/014/1041

Lead Organisation:

CAISSE CENTRALE DE LA MUTUALITÉ SOCIALE AGRICOLE - CCMSA

Les Mercuriales 40 Rue Jean Jaurès
F-93547 Bagnolet Cedex
Tel: +33 1 41 63 74 38
Fax: +33 1 41 63 77 54
e-mail: frota.luis@ccmsa.msa.fr
Website: www.msa.fr

Contact Name:

M. Daniel LENOIR

lenoir.daniel@ccmsa.msa.fr

Type/Legal Status of organisation:

Organisme privé sans but
lucratif (notamment ONG)

Member States involved:

France, Ireland, Portugal, Germany

Priority area for cooperation: 3

Promoting innovative approaches in policies for combating exclusion through the exchange of good practice

Grounds of Social Exclusion to be addressed:

Target group:

Main objectives / Summary of the project:

The PACE AVENIR project will bring together local actors from the rural environment of four European countries: France, Ireland, Portugal and Germany, all of whom are involved in combating social exclusion in the rural environment. The aim is to contribute to the effectiveness of policies targeting social inclusion by providing support for the local actors in rural communities – both public and private-sector – in terms of the development and introduction of approaches and coordination activities at local level. A later stage will see the production of a

methodological guide to help local actors develop their approaches so that there can be genuine social development in rural areas. Another aim is to define an approach that will allow the local actors in rural areas to become involved in the development and adaptation of regional tools or national tools designed to promote social inclusion.

Partners involved in the project:

COMBAT POVERTY AGENCY

Contact person : Jim Walsh
Project coordinator : Helen Johnston
Bridgewater Centre
Conyngham Road
Islandbridge
Dublin 8
Ireland
Tel : +353-1-6706746
Fax : +353-1-6706760
walshj@cpa.ie
Public

DEUTSCHER PARITÄTISCHER WOHLFAHRTSVERBAND

**LANDESVERBAND SACHSEN E. V. -
DPWV LV SACHSEN E.V.**
Contact person : Arnold Glum
Project coordinator : Regina Mannel
Liliengasse 19
D-01067 Dresden
Tel : +49 351 49166 32
Fax : +49 351 49166 14
Arnold.glum@parisax.de
Charity - Non-governmental

COMISSARIADO REGIONAL DO SUL DA LUTA CONTRA A POBREZA

Contact person : Elza Chambel
Project coordinator : Ana Maria Cruz
Lage
Rua Viriato, n° 7 – 7° andar Dto
PT- 1050 – 233 Lisboa
Tel : +351 21 330 1000 / 8
Fax : +351 21 330 1 009
Crsulpobreza@mail.telepac.pt
Public

5.11. Confédération Européenne des Coopératives de Travail Associé, des Coopératives Sociales et des Entreprises Participatives - CECOP

Title of the project:

L'ENTREPRISE SOCIALE LUTTE CONTRE L'EXCLUSION PAR L'INSERTION ÉCONOMIQUE ET SOCIALE: ELEXIES

Duration (*in month*): 18 Estimated total cost (in €): 273819,75 Granted amount:

Identification ref. (SAGA n°): 2001/E2/014/1042

Lead Organisation:

<p>CONFÉDÉRATION EUROPÉENNE DES COOPÉRATIVES DE TRAVAIL ASSOCIÉ, DES COOPÉRATIVES SOCIALES ET DES ENTREPRISES PARTICIPATIVES - CECOP</p>

Rue Guillaume Tell 59b
B-1060 Bruxelles
Tel: +32 2 543 10 33
Fax: +32 2 543 10 37
e-mail: cecop@cecop.org
Website: www.cecop.org

Contact Name:

Mr Felice SCALVINI

Type/Legal Status of organisation:

Confederation - European NGO

Member States involved:

Belgium, France , Sweden

Priority area for cooperation: 3

Promoting innovative approaches in policies for combating exclusion through the exchange of good practice

Grounds of Social Exclusion to be addressed:

Target group:

Main objectives / Summary of the project:

In partnership with EMES (universities) and ENSIE (social enterprises) and with the support of the ministries responsible for economic affairs in Belgium, France and Sweden, CECOP, as part of the ELEXIES project, intends to update the information on the social enterprises for integrating people in the 12 countries of the EU, to produce innovative indicators and, on the basis of the said indicators and of the methodological guide developed with the EMES research team, to undertake some 30 case studies of excellence in the 12 countries of the EU. On

the basis of the results the project will set up a benchmarking exercise by establishing three national comparative workshops for the exchange of best practice, launching a pilot scheme for coordination between the ministries with responsibility for economic affairs in the Member States concerned. The results envisaged include data bases, sites and portals on social enterprises for the integration of people, the creation of a benchmarking tool (indicators) and ensuring widespread dissemination of publications and extracts.

Partners involved in the project:

**CENTRE D'ECONOMIE SOCIALE DE
L'UNIVERSITÉ DE LIÈGE**

Membre du réseau européen EMES
Contact name : Jacques Defourny,
Directeur du Centre d'Economie Sociale
et coordinateur du Réseau Européen
EMES

Université de Liège au Sart Tilman
3, bd du Rectorat - Bât.B33 – bte 4
B-4000 Liège

Tel : +32 4 366 3136

Fax : +32 4 366 2751 (secrétariat)

+32 4 366 2851

j.defourny@ulg.ac.be

Public university; european network

ENSIE vzw

Membre du réseau européen EMES
Contact name : Walter Van den Bergh
Rue Guillaume Tell 59
B-1060 Bruxelles

Tel : + 32 2 543.10.43

Fax : +32 2 543.10.45

info@ensie.org

Non gouvernemental, European network

**SWEDISH MINISTRY OF INDUSTRY,
EMPLOYMENT AND
COMMUNICATIONS**

Ms Ulrica Messing
SE-103 33 Stockholm

Tel : +46 8 405 10 00

Fax : +46 8 411 36 16

Registrar@industry.ministry.se

Governmental

**MINISTÈRE BELGE DU BUDGET, DE
L'INTÉGRATION SOCIALE ET DE
L'ECONOMIE SOCIALE**

M. Johann Vande Lanotte

Rue Royale 180

B-1000 Bruxelles

Tel : +32 2 210 19 11

Fax : +32 2 217 33 28

Governmental

**MINISTÈRE DE L'EMPLOI ET DE LA
SOLIDARITÉ
SECRETARIAT D'ÉTAT À L'ÉCONOMIE
SOLIDAIRE**

M. Guy Hascoët

85, Bld du Montparnasse

F-75006 Paris

Tel : +33 1 40 56 60 00

Fax : +33 1 53 86 12 70

Governmental

5.12. Fosie stadsdelsförvaltning

Title of the project:

EUROPEAN TO LOCAL INNOVATION FOR BEST PRACTICE POLICY DEVELOPMENT COMBATING SOCIAL EXCLUSION, ELIPSE

Duration (*in month*): 12 Estimated total cost (in €): 235187,55 Granted amount:

Identification ref. (SAGA n°): 2001/E2/014/1049

Lead Organisation:

FOSIE STADSELSFÖRVALTNING

Box 31065
SE -200 49 Malmö
Tel: +4640347220
Fax: +4640229547
e-mail: sdf.fosie@malmo.se
Website: www.fosie.malmo.se

Contact Name:

Ms Sjöström, Susanne

susanne.sjostrom@malmo.se

Type/Legal Status of organisation:

Public Body, Local Authority

Member States involved:

Sweden, United Kingdom, Italy, France, Denmark, Germany

Priority area for cooperation: 3

Promoting innovative approaches in policies for combating exclusion through the exchange of good practices

Grounds of Social Exclusion to be addressed:

Target group:

Main objectives / Summary of the project:

The proposal aims at achieving five objectives:

1. To extract, assess and take care of knowledge about good practice that exist among people who work with area-based social exclusion, either professionally or voluntary.
2. To engender and establish a joint understanding, based on a bottom-up and multi-dimensional perspective, among representatives from different groups and cities working with social exclusion.
3. To develop action-oriented methods for how to succeed with promoting co-operation and exchanges of information in ways which means the taking care of existing knowledge and the engendering of a joint understanding.

4. To develop the capacity of the players concerned to address social exclusion effectively, both by adapting cross-sectoral approaches and taking part in networks at European level.
5. To encourage various ways of co-operation in order to combat social exclusion and promote social inclusion which could continue to develop after the project conclusion.

Partners involved in the project:

**UNIVERSITY OF NORTHUMBRIA AT
NEWCASTLE**

Contact name : Dr Natasha Vall
Centre for Northern Studies
School of Humanities
Squires Building
University of Northumbria
Newcastle upon Tyne
NE1 8ST
United Kingdom
Tel : (+44) (191) 227 3733
Fax : (+44) (191) 227 4187
natasha.vall@unn.ac.uk
Higher Education

JOHANN DANIEL LAWAEZT-STIFTUNG

Contact name : Dr. Thomas Mirbach
Neumühlen 16-20
D-22763 Hamburg
Tel : +49/40/39909429
Fax : +49/49/392598
fe@lawaetz.de
Non governmental

**ASSOCIAZIONE GRUPPO ABELE
O.N.L.U.S**

Contact name : Lucia Bianco
Project coordinator : Paola Molinatto
Via Giolitti, 21
IT - 10123 Torino
Tel : +39 011 8142717
Fax : +39 011 8395577
animazionesociale@tin.it
monterovere@libero.it
Non-governmental, no profit
organisation

ASSOCIATION CITEVAL

Contact name : Georges RENSONNET
Administrateur délégué
1bis rue JLB Cocquerel
F-62650 Lille
Tel : +33 3 21 06 54 54
Fax : +33 3 21 06 54 54
citeval@selos.org
Association sans but lucratif –
Organisme de formation

URBAN REGENERATION SECRETARIAT

Contact name : Jesper Bladt Jørgensen
and Maria Riisom Degn
Urban Regeneration Secretariat
Directorate of Finance
City of Copenhagen
City Hall
DK-1599 Copenhagen V
Tel : +45 3366 2515
Fax : +45 3366 7030
mrd.udv@of.kk.dk
jbl.udv@of.kk.dk
Public administration

5.13. COMUNE DI FORLI'

Title of the project:

IMMIGRATED WOMEN HEALTH ACCESS - IWHA

Duration (*in month*): 18 Estimated total cost (in €): 180245,29 Granted amount:

Identification ref. (SAGA n°): 2001/E2/014/1055

Lead Organisation:

COMUNE DI FORLI'

P.zza Saffi, 4
IT-47100 FORLI'
Tel: +39/543/712111
Fax: +39/543/7122670
e-mail: centrodonna@comune.forli.fo.it
Website: www.comune.forli.fo.it

Contact Name:

Dott. Franco Rusticali

banpa@comune.forli.fo.it

Type/Legal Status of organisation:

Public body, Local authority

Member States involved:

Italy, Greece, Spain, Germany, Portugal

Priority area for cooperation: 2

Action to help the most vulnerable

Grounds of Social Exclusion to be addressed:

Target group:

Migrants women and families

Main objectives / Summary of the project:

The project will aim at: improving the understanding of the causes of social exclusion, particularly directed to women and immigrant families through a methodological comparison at a European level; creating a local study group, in order to monitor permanently migrant phenomena, to carry out the survey and the study of innovative practices, to point out models of effective interventions and proposals of adjustment of local policies; strengthening regional, national and transnational network through the creation of a virtual transnational forum which will reflect cultural recognition on policies and will analyse the impact of

immigrant women and families social integration policies, considering the risks of reproducing exclusion and marginalisation.

Partners involved in the project:

OASE PANKOW E.V. PUBLIC CENTER OF CONSULTATION FOR REFUGEE

Project of integration and School education.

Contact name : Mrs Sofia Padovani

Project coordinator : Mrs Gabriella Török

Schonensche Straße 9

D- 10439 Berlin

Tel : +49 30 4714071

Fax : +49 30 47002550

pankow@planet-interkom.de

Non-profit organisation

MORNA – ASSOCIAÇÃO CULTURAL LUSO-AFRICANA

Contact name : Albertina Rocha Delgado

Project coordinator :Nardi Abraão Sousa

Rua das Fontainhas, 266 – Venda Nova

PT -2700-391 Amadora

Tel : +351 213582880

Fax : +351 213590692

morna@baisite.com

Non-governmental

CITY COUNCIL OF MALAGA. UNIT OF SOCIAL WELFARE

Contact name : Manuel Jiménez Rodríguez (Director)

Avenida de la Aurora, 55

E - 29006 Malaga

Tel : +34 952 13 49 50

Fax : +34 952 13 49 51

Europa.bsocial@ayto-malaga.es

Public

MUNICIPAL ORGANISATION FOR SOCIAL INTERVENTION AND HEALTH (D.O.K.P.Y.)

Contact name : Mr Spyros Iatropoulos

Christou Louli and Efesou

Nea Ionia Magnesias

GR-38446

Greece

Tel : +30 421 86044

Fax : +30 421 91078

info@dokpy.gr

spyros.iatropoulos@dokpy.gr

Non-profit organisation

COMUNE DI RAVENNA

Contact name : Lorenza Bartolotti
Project coordinator : Dott.ssa Raffaella Sutter
Via d'Azeglio 2
IT-48100 Ravenna
Tel : +39 0544 482515 /482060 / 482568
Fax : +39 0544 482355
lbartolotti@comune.ra.it
rsutter@comune.ra.it
asspariopportunita@comune.ra.it
Public body

PROVINCIA DI FORLÌ-CESENA

Contact name : Giuliana Mazzotti
Project coordinator : Pres. Piero Gallina
Piazza Morgagni n.9
IT-47100 Forli
Tel : +39 0543-714111
Fax : +39 0543-21081
polSOC@provincia.forli-cesena.it
Public Body

COMUNE DI IMOLA

Contact name : Poggiali Tiziana
Responsabile Ufficio Pari opportunità del Comune di Imola
Via Mazzinni n.4 –
IT-40026 Imola (Bologna)
Tel : +39/0542/602347
Fax : +39/0542/602162
parita@comune.imola.bo.it
Public body

MUNICIPALITY OF CESENA

Contact name : Morena Righi
Project coordinator : Vittorio Severi
Pzza del Popolo n. 1
IT-47023 Cesena
Tel : +39/547/356484 /547/356343
Fax : +39/547356509
severiv@comune.cesena.fc.it
Public body

TRAMA DI TERRE

Contact name : Patrizia Randini
Via Aldrovandi 31
IT-40026 Imola (Bologna)
Tel + Fax: +39 0542 28705
Trama.terre@mbox.queen.it
Private association

5.14. CONFEDERACIÓN DE EMPRESARIOS DE ARAGÓN

Title of the project:

NETWORKING FOR THE LABOUR INSERTION OF THE EXCLUDED IMMIGRANTS - IMINET

Duration (*in month*): 14 Estimated total cost (in €): 183778 Granted amount:

Identification ref. (SAGA n°): 2001/E2/014/1060

Lead Organisation:

CONFEDERACIÓN DE EMPRESARIOS DE ARAGÓN

Plaza Roma F-1, 1º
E-50010 Zaragoza
Tel: + 34 976 46 00 66
Fax: + 34 976 32 75 08
e-mail: joalonso@crea.es
Website: www.crea.es

Contact Name:

Mr Fernando García de Leániz

fgl@crea.es

Type/Legal Status of organisation:

Confederation, Employer's
organisation

Member States involved:

Spain, Italy, Denmark, Germany

Priority area for cooperation: 3

Promoting innovative approaches in policies for combating exclusion through the exchange of good practices

Grounds of Social Exclusion to be addressed:

Access to labour market

Target group:

Migrants

Main objectives / Summary of the project:

IMINET has as its main objective the preparation of action plans for social enterprises active in the fight against social and labour-market exclusion of immigrants by the exchange and learning of the programme's methods or campaigns that are most effective and are in use in Europe in this field, plus the creation of tools to convert information into action.

- To develop and step up the scope for cooperation between the social partners, the NGOs and the local authorities in terms of the integration of immigrants, in particular through the channel of employment, and consolidate the working method based on transnational cooperation and local action. It is expected that the result will be the creation of an innovative transnational cooperation model for local action to combat exclusion within the community with the prospect of sustainability.

- Evaluation of the programmes, campaigns, ideas selected as good practice on the basis of quantitative and qualitative criteria to be established jointly by all the partners in order to measure its effectiveness and multiplier effect, transferability and critical points.

Method: networking; cooperation among all the actors involved in the work at local level; integrated approach to problems and solutions; processing of psychosociological factors in the integration programmes for this community; involvement of the immigrant in the preparation application of policies and actions.

Products: a catalogue of best practice; a decalogue of recommendations for the labour market integration programmes under social policy; model approaches for the integration of immigrants; regional labour-market forecasts for immigrants;

Dissemination: production of a web page; the organisation of regional forums for the local actors involved (local authorities, NGOs, social partners ...); media campaign; international seminar; inclusion of our products and bodies in existing European networks that support the integration of immigrants.

Partners involved in the project:

THE CENTRE FOR EDUCATION AND TRAINING OF IMMIGRANTS. COPENHAGEN CITY

Contact name :Mr. Henning Aglund
Hejrevej 10
DK-2400 Kobenhavn NV
Tel : +45 331 73 000
Fax : +45 3317 3010
Henning.aglund@faf.kk.dk
Public

JOHANN DANIEL LAWAEZ-STIFTUNG

Contact name : Dr. Thomas Mirbach
Neumühlen 16-20
D-22763 Hamburg
Tel : +49 40 399 09 429
Fax : +49 49 3925 98
fe@lawaez.de
Non-governmental

EUROSPORTELLLO VENETO DELL'UNIONE REGIONALE DELLE CAMERE DI COMMERCIO DEL VENETO

Contact name : Gian Angelo Bellati
Project coordinator : Michela Oliva
Via Sansovino 9
IT-30173 Mestre- Venezia
Tel : +39 041 2581 666
Fax : +39 041 2581 600
europa@eicveneto.it
Non-profit organisation financed by public funds.

FUNDACIÓN FEDERICO OZANAM

Contact name : José María Lamana Cónsola
C/ Ramón y Cajal 24
E-50004 Zaragoza
Tel : +34 976 44 33 66
Fax : +34 976 43 26 56
accionsocial@ozanam.com
Fundación

**DIPUTACIÓN GENERAL DE ARAGÓN
DEPARTAMENTO DE SANIDAD, CONSUMO Y
BIENESTAR SOCIAL**

Contact name : Luisa Noeno Ceamanos
Paseo M^a Agustín 36
Edificio Pignatelli
E-50004 Zaragoza
Tel : +34 976 715 041
Fax : +34 976 712 111
Lnoeno@aragob.es
Administración Pública Autonómica

**UNIÓN GENERAL DE TRABAJADORES DE
ARAGÓN**

Contact name : Jesús Membrado Abadía
Project coordinator : Ana Fernández Abadía
C/ Costa nº 1
E-50001 Zaragoza
Tel : +34 976 70 01 19
Fax : +34 976 70 02 08
Sai@argon.ugt.org
Organización sindical

**ADMINISTRAZIONE PROVINCIALE DE
BELLUNO**

Assessore Politiche del Lavoro
Project coordinator : Walfre Grisot
Via S. Andrea 5
IT-32100 Belluno
Tel : +39 0437 959 111
Fax : +39 0437 941 222
assessori@provincia.belluno.it
Public

**ISTITUTO REGIONALE PER
L'EDUCAZIONE E GLI STUDI
COOPERATIVI IRECOOP VENETO**

Contact name : Garttolin Eugenio
Project coordinator : Barison Franca
Via Savelli 128
IT- 35129 Padova
Tel : +39 049 807 6143
Fax : +39 049 807 6136
info@irecoop.veneto.it
Non-profit organisation

5.15. COO.S.S. Marche a R. L. - Cooperativa Sociale ONLUS

Title of the project:

MEPESE - METHODS TO PREVENT ELDERLY SOCIAL EXCLUSION

Duration (*in month*): 18 Estimated total cost (in €): 134827,94 Granted amount:

Identification ref. (SAGA n°): 2001/E2/014/1062

Lead Organisation:

COO.S.S. MARCHE A R. L. - COOPERATIVA SOCIALE ONLUS

Via Saffi n. 4
IT-60121 Ancona
Tel: +39 071 501031
Fax: +39 071 50103206
e-mail: ricerca6@cooss.marche.it
Website: www.cooss.marche.it

Contact Name:

Sig. Amedeo Duranti

presidenza@cooss.marche.it

Type/Legal Status of organisation:

Cooperative, Private Non-Profit
Making Organisation

Member States involved:

Italy, Austria, United Kingdom, Spain

Priority area for cooperation: 2

Action to help the most vulnerable

Grounds of Social Exclusion to be addressed:

Target group:

Elderly

Main objectives / Summary of the project:

MEPESE project aims to prevent social exclusion of the elderly by providing a comprehensive collection of methods in order to help old people to stay in their spontaneous social networks without being isolated. The proposal aims to define and evaluate new methodologies and tools for the prevention and the reduction of the phenomenon of social exclusion of the elderly. This main objective is pursued by the consortium of partners through the following activities: preliminary review of literature about marginalisation of old people and of the existent supply of services to elderly people in Europe; individuation of the users' needs through a

specific analysis of the needs of the elderly excluded and of those at risk of exclusion; definition of methodologies for the interpretation of the resources present in the Local Community in order to create a strong network active in preventing and combating the phenomenon of social exclusion of the elderly; MEPESE proposal intends to suggest, debate and evaluate in a large contest of stakeholders its proposal of 'Local Social Network Intervention' approach in order to prevent and reduce the risk of social exclusion of older people, with a view to set guidelines that will be specifically addressed to policy makers at community, local and regional level.

Partners involved in the project:

SOUTH AND EAST BELFAST HEALTH**AND SOCIAL SERVICES TRUST**

Contact name : Mr John Donaghy

Trust Headquarters

Knockbracken Healthcare Park

Saintfield Road

Northern Ireland

BT8 8BH

United Kingdom

Tel : + 44 28 90565680

Fax : + 44 28 90565806

john.donaghy@sebt.n-i.nhs.uk

public

SERVIGRUP POVISAD COOP. V.

Contact name : Carmen Planells Tello

Project coordinator : M Ascención

Macías Marassa

C/ Progreso, 92

E- 46011 Valencia

Tel : +34963561464

Fax : +34963561476

Servigrupeuropa@eresmas.com

Private Co operative

SOZIALES SERVICE

Contact name :Renate Meszarics

Project coordinator : Marianne Egger de Campo

Flosslendstrasse 18

A-8020 Graz

Tel : +43-316-68-71-41

Fax : +43-316-68-71-41-41

marianneegger@sozialeservice.at

charity

IMPRESA A RETE COOP SOCIALE A**R. L. - ONLUS**

Contact name : Paolo Villarecci

Via dell'Artigianato 20

IT-33080 Roveredo in Piano (PN)

Tel : + 39 0434 960000

Fax : + 39 0434 960003

ir@impresarete.com

p.villarecci@impresarete.com

NGO

5.16. El Sur Piccola Società Cooperativa a Responsabilità Limitata

Title of the project:

LE CAUSE E LE DINAMICHE DELL'ESCLUSIONE SOCIALE DEGLI IMMIGRATI IN EUROPA. STUDIO E ANALISI DI TRE CASI: DANIMARCA, ITALIA E SPAGNA.

Duration (*in month*): 12 Estimated total cost (in €): 148220,6 Granted amount:

Identification ref. (SAGA n°): 2001/E2/014/1083

Lead Organisation:

EL SUR PICCOLA SOCIETÀ COOPERATIVA A RESPONSABILITÀ LIMITATA

Via Nazionale Appia 151
IT-81022 Casagiove (Caserta)
Tel: +39 0812535823
Fax: +39 0812535849
e-mail: vitiello@unina.it
Website:

Contact Name:

Dott. Formisano Catello

catelfor@tin.it

Type/Legal Status of organisation:

Cooperative, Private Profit-
Making Organisation

Member States involved:

Italy, Denmark, Spain

Priority area for cooperation: 1

Conducting and disseminating research making for a better understanding of social exclusion

Grounds of Social Exclusion to be addressed:

Target group:

Migrants

Main objectives / Summary of the project:

The aim of the research is to understand and explain the nature, causes and types of social exclusion suffered by immigrants while at the same time defining the mechanisms by which immigrants find themselves economically and socially marginalised in the three countries in question (Italy, Denmark and Spain).

Secondly, to define the factors responsible for the social exclusion of immigrants that are common to the three countries whilst identifying those that are particular to each single context. Lastly, to design social policy measures that largely cater

for the requirements of immigrants with the aim of strengthening their integration processes within the European Union and in the various national contexts.

Partners involved in the project:

PUNTO.SUD

Contact name : Francesco Slaviero
Via Angera 3
IT-20125 Milano
Tel : +39-02-67574345
Fax : +39-02-67574341
puntosud@iol.it
non-profit organisation

**TRAINING, EDUCATION &
DEVELOPMENT**

Contact name : Herluf Thomsen
Project coordinator : Bø Bogeskov
Dannebrogsgade 3
DK-1660 Copenhagen V
Tel : +45 4674 2518
Fax : +45 4674 3083
Lyffa@hotmail.com
non-profit organisation

CENTRE D'ESTUDIS AFRICANS (CEA)

Contact name : Rafa Crespo (President)
Project coordinator : Lola Lopez
Mare de Déu del Pilar 15 Pral
E- 08003 Barcelona
Tel : +34-933194008
Fax : +34-933194008
Cea@pangea.org
Non-governmental

**COOPERAZIONE INTERNAZIONALE
(COOPI)**

Contact name : Davide Martina
Via Francesco De Lemene
IT-20151 Milano
Tel : +39-02-3085057
Fax : +39-02-33403570
martina@coopi.org
NGO

**FEDERICO CAFFÈ CENTRE – DEPT. OF
SOCIAL SCIENCES, ROSKILDE
UNIVERSITY**

Contact name : Andrea Gallina
Project coordinator : Bruno Amoroso
Universitetsvej, 1
DK-4000 Roskilde
Denmark
Tel : +45 4674 2162
Fax : +45 4674 3083
agallina@ruc.dk
Non-profit training and research institute

**FACOLTÀ DI SOCIOLOGIA –
UNIVERSITÀ DEGLI STUDI DI NAPOLI
FEDERICO II**

Contact Name : Formisano Catello
Vico Monte della Pietà 1
IT-80138 Napoli
Tel : +39 812535823
Fax : +39 812535849
catio@libero.itmailto:Lyffa@hotmail.com
Public

5.17. European Forum for Child Welfare

Title of the project:

FAMILIES UNDER STRESS - SUPPORTING SERVICES IN EUROPE

Duration (*in month*): 18 Estimated total cost (in €): 166843,31 Granted amount:

Identification ref. (SAGA n°): 2001/E2/014/1084

Lead Organisation:

EUROPEAN FORUM FOR CHILD WELFARE

53 rue de la Concorde
B-1050 Brussels
Tel: +32 2 511 70 83
Fax: +32 2 511 72 98
e-mail: eleni@efcw.org
Website: www.efcw.org

Contact Name:

Ms Eleni Andrikopoulou

Type/Legal Status of organisation:

Private Non-Profit Making
Organisation - European Level
Non Governmental
Organisation

Member States involved:

Belgium, Greece, Ireland, Spain, United Kingdom

Priority area for cooperation: 2

Action to help the most vulnerable

Grounds of Social Exclusion to be addressed:

Problems which prevent families from taking full part in society, whether this is because of poverty, substance abuse, violence, (mental) health problems, race or ethnic origin.

Target group:

Families

Main objectives / Summary of the project:

The objective of the project will be to promote a better understanding of what exclusion means for disadvantaged families, to identify and review the different types of services that exist to support families in need across Europe, to share best practice on services for disadvantaged families and to produce guidelines for family support services in Europe. To do this a consultation paper/questionnaire

will be formulated by a researcher based on discussions with the four partners and users of services. This will be distributed widely across Europe. Users will also be asked to write their life stories to improve understanding of what exclusion means. A comprehensive literature review will be carried out and four study visits will be organised to promote the exchange of knowledge and experience between service providers for families.

Partners involved in the project:

BARNARDOS - IRELAND

Contact name : Owen Keenan
4 Christchurch Square
Dublin 8
Ireland
Tel : +353 1 453 0355
Fax : +353 1 453 0300
owen.keenan@barnardos.ie
Charity

FUNDACION ANAR

Contact name : Beatriz Fernandez
Project coordinator : David Lopez Royo
Avenida de America 24, 1 int
E-28028 Madrid
Tel : (34) 91 726 27 00
Fax : (34) 91 726 76 00
Contabilidad@anar.org
Non governmental

NATIONAL ORGANISATION FOR SOCIAL CARE

Contact name : Lambrini-Ninetta Zoi
Project coordinator : Anna Constantinou-Psarra
Ypatias 6, PO Box 30218
EL-10033 Athens
Tel : +30 1 6462741, + 30 31 931694
Fax : +30 1 6462741, + 30 31 931694
Kesyyeop@otenet.gr
Public

NATIONAL COUNCIL OF VOLUNTARY CHILD CARE ORGANISATIONS

Contact name : I Vallender - Policy and information officer
Unit 4, Pride Court
80-82 White Lion Street
London N1 9PF
England
Tel : +44 207 833 33 19
Fax : +44 207 833 86 37
Info@ncvcco.org
Charity

5.18. EUROPEAN OFFENDER EMPLOYMENT FORUM - EOE F

Title of the project:

WHAT WORKS WITH OFFENDERS? *European networking for the identification of successful practices in preparing ex offenders for employment integration.*

Duration (*in month*): 18 Estimated total cost (in €): 189898,02 Granted amount:

Identification ref. (SAGA n°): 2001/E2/014/1088

Lead Organisation:

EUROPEAN OFFENDER EMPLOYMENT FORUM - EOE F

Laborel Postbus 1127
NL - 5200 BD 'S Hertogenbosch
Tel: +31 (0) 73 683 6360
Fax: +31 (0) 73 683 6361
e-mail: eoef@tref.nl
Website: www.eoef.org

Contact Name:

Mr George MOSCHOS

arsisath@compulink.gr

Type/Legal Status of organisation:

Private Non-Profit Making
Organisation - European Level
Non Governmental
Organisation

Member States involved:

The Netherlands, Greece, Belgium

Priority area for cooperation: 3

Promoting innovative approaches in policies for combating exclusion through the exchange of good practices

Grounds of Social Exclusion to be addressed:

Access to labour market

Target group:

Ex-offenders

Main objectives / Summary of the project:

The project is concerned with the trans-European recording, elaboration, presentation and promotion of "good practices" of ex offenders' preparation for employment integration. With the help and guidelines set by a Steering Committee, consisting of the Board members of EOE F, the project manager (Director of EOE F) and specially recruited scientific staff will collect information

and register innovative and successful projects from all over Europe, in which offenders are prepared and supported in various ways for labour market integration. Based on agreed criteria, selected projects will be presented and elaborated comparatively in two introductory seminars to take place one in the North and one in the South of Europe. In the following, recorded projects will appear in a database promoted by EOEf website and will be included in the project final report. This report, together with selected projects will be presented in the final European conference, in which project representatives, policy makers and academics will discuss their implications in policy planning both at national and European level. The report of the project will become available in the form of a book and of a CD-ROM.

Partners involved in the project:

PSW EMPLOYMENT CONSULTANCY

Contact name : René van Hooren

Postbus 1228

NL-5200 BG 'S Hertogenbosch

Tel : +31 73 6124 325

Fax : +31 73 6128 575

r.v.hooren@psw.nl

Non-Profit Making Organisation

ARSIS ASSOCIATION FOR THE SOCIAL SUPPORT OF YOUTH

Contact name : George Moschos

15, K. Loukareos

EL-11475 Athens

Tel : +30 3 01 644 21 98

Fax : +30 3 01 642 46 03

Arasisath@compulink.gr

NGO

ORGANISATION POUR L'EMPLOI DES DÉLINQUANTS

Contact name : Alain Harford

Sentier Kleindal 5

B-1630 Linkebeek

Tel + Fax : +32 2 380 98 93

Harford.alain@worldonline.be

Non-profit Making Organisation

5.19. EUROCITIES

Title of the project:

CASE (CITIES' ACTIONS TO COMBAT SOCIAL EXCLUSION)

Duration (*in month*): 17 Estimated total cost (in €): 205964,68 Granted amount:

Identification ref. (SAGA n°): 2001/E2/014/1092

Lead Organisation:

EUROCITIES

18 Square de Meeûs
B-1050 Brussels
Tel: + 32 2 552 0888
Fax: + 32 2 552 0889
e-mail: info@eurocities.be
Website: www.eurocities.org

Contact Name:

Ms Catherine PARMENTIER

c.parmentier@eurocities.be

Type/Legal Status of organisation:

Private Non-Profit Making Organisation

Member States involved:

Belgium, Ireland, United Kingdom, The Netherlands, Greece, Spain, Denmark

Priority area for cooperation: 3

Promoting innovative approaches in policies for combating exclusion through the exchange of good practices

Grounds of Social Exclusion to be addressed:

Target group:

Main objectives / Summary of the project:

The project CASE (Cities' Actions to combat Social Exclusion) is an initiative from EUROCITIES incorporating the local authorities of 10 European cities (Aarhus, Barcelona, Bologna, Dublin, Glasgow, Lewisham-London, Newcastle, Rotterdam, Stockholm and Trikala) from 7 Member States, coordinated by the EUROCITIES secretariat. The project aims to enable local authorities and other relevant local players to effectively contribute to the process of the National Action Plans to combat social exclusion by promoting the exchange of good practices as regards innovative approaches to combat social exclusion, and by fostering cooperation at the local and transnational levels. The objective of the project is to develop a comparative framework to enable the identification and

exchange of good practices among cities to provide the necessary basis for cities and their relevant local players to (re-)consider the effectiveness of their actions and improve them in a continuous process of innovation.

Partners involved in the project:

MUNICIPALITY OF AARHUS, SOCIAL DEPARTMENT

Contact name : Jesper Eskelund
Jaergergaarden
Vaerkmestergade 15
DK-8100 Aarhus
Denmark
Tel : +45 8940 3006
Fax : +45 8940 3077
jje@soc.aarhus.dk
Public Municipality

AYUNTAMIENTO DE BARCELONA

Contact name :Jordi Plana
Avd. Diagonal, 233, 4ª pl.
E- 08013 Barcelona
Tel : +34-3-413 26 10
Fax : +34-3-413-26-52
jplana@mail.bcn.es
Public authority

COMUNE DI BOLOGNA

Contact name : Marina Aldrovandi
Project coordinator : Fausto Amelii
Coordinamento servizi sociali
Viale Vicini 20
IT-40122 Bologna
Tel : +39 051 204310
Fax : +39 051 203799
marina.aldrovandi@comune.bologna.it
Public authority

DUBLIN CORPORATION /

Contact name : Geraldine Gorman,
Block 1, Floor 1
Civic Offices, Fishamble Street
Ireland, Dublin 8
Tel : +353 16 722 005
Fax : +353 16 793 730
Geraldine.gorman@dublincorp.ie

Local authority

/ IN PARTNERSHIP WITH

DUBLIN EMPLOYMENT PACT

Contact name : Philip O'Connor
7 North Great Georges Street
Ireland, Dublin 1
Tel : +353 18 788 900
Fax: +353 18 788 711
poconnor@dublinpact.ie
Local Authority

GLASGOW CITY COUNCIL

Contact name : Eleanor McAllister
Development and Regeneration Services
229 George Street
Glasgow G1 1QU
Scotland
Tel : +44 (0)141 287 7211
Fax : +44 (0)141 287 7292
eleanor.mcallister@drs.glasgow.gov.uk
Local Authority

LONDON BOROUGH OF LEWISHAM

Contact name : Antoinette Moussalli
European and International Affairs
3rd Floor Lewisham Town Hall
1 Catford Road
Catford, London
SE6 4RU
United Kingdom
Tel : + 44 (0) 208 314 8263
Fax : + 44 (0) 208 314 3226
European.projects@lewisham.gov.uk
Public

**DEPARTMENT OF SOCIAL AFFAIRS AND
EMPLOYMENT CITY OF ROTTERDAM**

G. Oude Engberink
Willem Ruijslaan 225
p.o.box 1024
NL- 3000 BA Rotterdam
Tel : +31 10 45 33 480
Fax : +31 10 45 21 824
Csp@sozawe.rotterdam.nl
Public, municipal

**THE CITY OF STOCKHOLM, THE
SOCIAL SERVICE ADMINISTRATION**

Contact name : Mr. Stig Hanno
SE-106 64 Stockholm, Sweden
Tel : +46 8 508 25
Fax : +46 8 508 25 202
stig.hanno@sot.stockholm.se
public

5.20. Fondazione Istituto Andrea Devoto

Title of the project:

PELIC@N PREPARAZIONE DI UNA RETE DI INCLUSIONE

Duration (*in month*): 12 Estimated total cost (in €): 167122,28

Granted amount:

Identification ref. (SAGA n°): 2001/E2/014/1105

Lead Organisation:

FONDAZIONE ISTITUTO ANDREA DEVOTO

Viale Mazzini, 40

IT-50136 Firenze

Tel: + 39 55 2469055

Fax: + 39 55 2469167

e-mail: me3699@mclink.it

Website: www.fondazioneandreadevoto.it

Contact Name:

Dott.ssa Maria Giovanna Le Divelec

Type/Legal Status of organisation:

Organisme privé sans but lucratif (notamment ONG)

Member States involved:

Italy, United Kingdom, Austria, Belgium, Greece

Priority area for cooperation: 2

Action to help the most vulnerable

Grounds of Social Exclusion to be addressed:

Target group:

Disabled people, Aids seropositive; vulnerable people in suburban areas

Main objectives / Summary of the project:

The aim of the project is to promote self-help as an innovative way of making best use of an individual's resources within groups at risk of social exclusion, in particular: people with disabilities, people who are HIV-positive, people living in outlying areas of cities affected by the phenomena of new poverty.

On the basis of direct involvement and participation by the target groups we intend to develop a method to generate better links between groups and other groups and between groups and institutions, namely a method that uses the new technologies as a way of facilitating exchanges, information flow and enhancing

visibility. The project will commence with a study of disadvantage as a situation. The study will be conducted jointly in the participating countries. It will comprise various stages involving research, focus groups, seminars with target intermediaries, dissemination of results at a final conference and using a web site that will be both an inter-active area and a discussion forum.

Partners involved in the project:

TREFPUNT ZELFHULP VZW

Contact name : Peter Gielen
Project coordinator : Prof. Dr. Koen
Matthijs
E. Van Evenstraat 2c
B-3000 Belgium
Tel : +32 163 231 58
Fax : +32 163 230 52
Peter.gielen@soc.kuleuven.ac.be
NGO

FONDS GESUNDES ÖSTERREICH

Contact name : Mag. Andrea Lins
Mariahilfer Strasse 176
A-1150 Wien
Tel : +43 1 8950 400-12
Fax : +43 1 8950 400-20
Andrea.lins@fgoe.org
Non-profit making organisation

SELFHELP NOTTINGHAM

Contact name : Barbara-Anne Walker
Ormiston House
32-36 Pelham Street
Nottingham NG1 2EG
United Kingdom
Tel : +44 115 911 1662
Fax : +44 115 911 1660
Barbara-Anne@selfhelp.org.uk
Charity organisation

EPISTROFI

Contact name : I.A. Mouzas
Epistrofi Mahis Kritis n. 3/1e étage
EL- 71303 Heraclion, Crete
Tel : +30 81 318 889
Fax : +30 81 262 405
Mouzas@med.uoc.gr
NGO

CONSORZIO INTERCOMUNALE DEI SERVIZI SOCIOASSISTENZIALI - CISS CHIVASSO

Contact name : Giovanna Pentenero
Project coordinator : Dott.ssa Alessandra
Prada
Via Po 54
IT-10034 Chivasso
Tel : +39 11 910 6561
Fax : +39 11 910 2452
Ciss-chivasso@tin.it
Public body

CONSORZIO INTERCOMUNALE DEI SERVIZI SOCIOASSISTENZIALI - CISS CALUSO

Contact name : Elio Lepore
Project coordinator : Nadia Marin
Via San Francesco 2
IT-10014 Caluso
Tel : +39 0119 89 35 11
Fax : +39 0119 83 29 76
Eliolep@tin.it
Public body

CONSORZIO INTERCOMUNALE DEI SERVIZI SOCIOASSISTENZIALI - CISS 38

Contact name : Geom. Fassio Renato
Project coordinator : Dott.ssa Fiorentina
Bausano
Via Gramsci, 5
IT-10082 Cuorgne (TO)
Tel : +39 124 65 41 20
Fax : +39 124 65 41 71
Ciss38@misper.it
Public body

CONSORZIO SERVIZI SOCIALI INRETE

Contact name : Patrizia Merlo
Project coordinator : Vanda Perano
Via Jervis 24
IT-10015 Ivrea
Tel : +39 0125 64 61 11
Fax : +39 0125 64 61 90
Ssa@asl.ivrea.to.it

Public body

SELF-HELP GROUPS

Contact name : Rossana Ciambelli
Parco Comola Ricci, 39
IT-80122 Italia
Tel + Fax : +39 081 76 143 30
Shgvo@libero.it
Volunteer organisation

COMUNE DI FIGLINE VALDARNO

Contact name : Dott. Andrea Perini
Project coordinator : Dott. Luciano
Tagliaferro
P.zza VI Novembre 3
IT-50063 Figline Valdarno (FI)
Tel : +39 055 912 5265
Fax : +39 055 912 5264
Scuola@comune.figline-valdarno.fi.it
Public authority

**CENTRO DI ALCOLOGIA E DELLA
NUTRIZIONE - DIPARTIMENTO DI
FISIOPATOLOGIA CLINICA -
UNIVERSITÀ DI FIRENZE**

Contact name : Dott. Valentino Patussi
Viale Morgagni 85
IT-50134 Firenze
Tel : +39 55 433 665
Fax : +39 55 422 2409
v.patussi@dfc.unifi.it
Public organisation / University

FONDAZIONE RUFFINI ONLUS

Contact name : Dott. Luigi Stabile
Project coordinator : Dott.ssa Daniela
Maffei
Cascina Vesco
Località Montenavale sn
IT-10015 Ivrea (TO)
Tel + Fax : +39 125 627184
Fondazioneruffini@libero.it
Private organisation

**CESIAV - CENTRO STUDI E INIZIATIVE
PER L'ASSOCIAZIONISMO E IL
VOLONTARIATO**

Contact name : Marco Landucci
Project coordinator : Guido Memo
Via Pietro Mengoli 4
IT-00146 Italia
Tel : +39 06 553 69 329
Fax : +39 06 557 21 97
Seg@cesiaiv.vie.it
Cesiaivfi@cesiaiv.vie.it
Volunteer organisation

5.21. Gesellschaft für Berufsbildende Massnahmen e.V.

Title of the project:

STEP BY STEP: THE EFFECTIVENESS OF INNOVATIVE APPROACHES FOR DEMOCRATIC PARTICIPATION, INDIVIDUAL COUNSELLING AND NETWORKING OF LOCAL SERVICES IN THE FIGHT AGAINST THE SOCIAL EXCLUSION OF YOUNG PEOPLE. PROPOSAL FOR A PARTICIPATIVE ACTION RESEARCH PROJECT.

Duration (*in month*): 12 Estimated total cost (in €): 306635,81 Granted amount:
Identification ref. (SAGA n°): 2001/E2/014/1110

Lead Organisation:

GESELLSCHAFT FÜR BERUFSBILDENDE MASSNAHMEN E.V.

Reichenbergerstrasse 88
D-10999 Berlin
Tel: +49 30 6177640
Fax: +49 30 61776418
e-mail: Lowtec-GFBM@t-online.de
Website: www.gfbm.de

Contact Name:

Herrn Louis KAUFMANN
kaufmann@gfbm.de

Type/Legal Status of organisation:

Private Einrichtung ohne
Erwerbszweck (NRO)/NGO

Member States involved:

Germany, United Kingdom, The Netherlands, Belgium, Italy

Priority area for cooperation: 1

Conducting and disseminating research making for a better understanding of social exclusion.

Grounds of Social Exclusion to be addressed:

Target group:

Main objectives / Summary of the project:

Case studies, cross-over pilot seminars and a joint evaluation of existing innovative approaches will determine in five participating cities what are the best ways to establish preventive and cooperative structures to encourage young people threatened by social exclusion not to abandon their education or to end their education with very poor qualifications. Tests will be run to establish the most effective way to establish a network encompassing youth services, social services, schools, employment exchanges, advisory and support institutions as

well as training and further training projects and to ascertain how young people can become involved by taking part and ensuring democratic transparency.

Partners involved in the project:

MUNICIPALITY OF DEN HELDER

Contact person: Drs. W.M. Veltkamp
Project coordinator: Drs. W.M. Veltkamp
Postbox 36, Den Helder
NL-1780 AA
The Netherlands
Tel: +31 223 671316
Fax: +31 223 671683
p.veltcamp@denhelder.nl
Public Organisation

**MUNICIPALITY OF ANDERLECHT /
EDUCATION DEPARTMENT**

Contact person: Jean-Jacques Boelpaep
Project coordinator: Christian
Vanderstratten
Rue Van Lints
B-1070 Bruxelles
Belgium
Tel: 02/558.08.24
Fax:
Email:
Public Organisation

ARCES ASSOCIATION

Contact person: Nicoletta Pupura
Project coordinator: Maria Francesca Guli
Via Lombardia 6
I-90144 Palermo
Italy
Tel: +39 091 346629
Fax: +39 091 346377
arces@infcom.it
NGO

HERTFORDSHIRE COUNTY COUNCIL

Contact person: Andrew Burt
Project coordinator: Andrew Burt
Ground Floor, North East Block
County Hall
Pegs Lane
Hertford SG13 8 DF
United Kingdom
Tel: +44 01992 555213
Fax: +44 01992 555238
Andrew.burt@hertscc.gov.uk
Local Government Authority

**BEZIRKSAMT FRIEDRICHSHAIN-
KREUZBERG OF BERLIN**

Contact person: Ms. Doris Nahawandi
Project coordinator: Ms. Doris Nahawandi
Frankfurter Allee 35/37
D-10216 Berlin
Germany
Tel: +49 30 5058-6660
Fax: +49 30 50586617
Jug1.15@ba-krzbg.verwalt-berlin.de
Public Administration

5.22. Hoger Instituut voor de Arbeid (Catholic University of Leuven)

Title of the project:

MINIMUM INCOME AS THE "SOCIAL PROTECTION OF LAST RESORT": SAFETY NET, TRAP AND/OR SPRINGBOARD?

Duration (*in month*): 18 Estimated total cost (in €): 394708,11 Granted amount:

Identification ref. (SAGA n°): 2001/E2/014/1116

Lead Organisation:

HOGER INSTITUUT VOOR DE ARBEID (CATHOLIC UNIVERSITY OF LEUVEN)

E. Van Evenstraat 2E

B-3000 Leuven

Belgium

Tel: +32 16 32 33 70

Fax: +32 16 32 33 44

ides.nicaise@hiva.kuleuven.ac.be

www.kuleuven.ac.be/hiva

Contact Name:

Prof. Hubert COSSEY

hubert.cossey@hiva.kuleuven.ac.be

Type/Legal Status of organisation:

Private Non-Profit Making Organisation (NGO)

Member States involved:

Belgium, United Kingdom, Spain, Austria, Finland, Denmark, France, Greece, Ireland, The Netherlands, Portugal

Priority area for cooperation: 1

Conducting and disseminating research making for a better understanding of social exclusion

Grounds of Social Exclusion to be addressed:

Target group:

Main objectives / Summary of the project:

This project aims (a) to develop performance indicators of minimum income schemes, and (b) to study related processes of prevention (safety nets), inclusion (springboards) and exclusion (traps) in national social protection schemes. Our statistical framework thus closely fits with the modern conceptual approach to social inclusion, where structural and dynamic processes are emphasised rather than static individual characteristics. Data are drawn from the ECHP. The project

builds on a pilot covering 4 countries over 3 years, carried out in 2000-2001. This present proposal aims at a fourfold extension: (a) to all countries of the EU, (b) to more recent years, (c) to further analysis of structural influences and (d) to policy implications for the NAPs for social inclusion.

Partners involved in the project:

**FORSCHUNGS- UND BERATUNGSSTELLE
ARBEITSWELT (FORBA) (WORKING
LIFE RESEARCH CENTRE)**

Contact person: Ingrid Mairhuber
Aspernbrückengasse 4/5
A-1020 Vienna
Tel: +43 01 2124770 61
Fax: +43 01 2124700 77
Mairhuber@forba.at
NGO

**UNIVERSITY OF COPENHAGEN,
DEPARTEMENT OF SOCIOLOGY**

Contact person: Peter Abrahamson
Departement of sociology, 22 Linnésgade
DK-1361 Copenhagen K
Tel: +45 3532 3940
Fax: +45 3532 3940
Peter.Abrahamson@sociology.ku.dk
Public Organisation

**WORK RESEARCH CENTRE,
UNIVERSITY OF TAMPERE**

Contact person: Simo Aho
Work Research Centre; 33014 University
of Tampere
FIN-33014 University of Tampere
Tel: +358 3 215 72 63
Fax: +358 3 215 72 65
Simo.aho@uta.fi
Public Organisation

INSEE

Contact person: Jean-Paul Zoyem
15, bd Gabriel Peri
Timbre G211
F-92244 Malakoff cedex
Tel: +33.1.41.17.59.97
Fax: +33.1.41.17.60.45
jean-paul.zoyem@insee.fr
paul.zoyem@insee.fr
Public Organisation

**CENTER FOR ECONOMIC RESEARCH
AND ENVIRONMENTAL STRATEGY
(CERES)**

Contact person: Dimitris Zevgolis
Project coordinator: Prof. Panos
TSAKLOGLOU
18 Omirou STR.
EL-10672 Athens
Tel: +3010 3612380 3612575
Fax: +3010 3612380 3612575
ceres@k-netgroup.com
jean-paul.zoyem@insee.fr
Private Organisation

**THE ECONOMIC AND SOCIAL
RESEARCH INSITUTE**

Contact person: Brian Nolan
4 Burlington Road
Dublin 4
Ireland
Tel: +353 1 667 1525
Fax: +353 1 668 6231
brian.nolan@esri.ie
NGO

**ISTITUTO DI SOCIOLOGIA – UNIVERSITÀ
DI URBINO**

Contact person: Yuri Kazepov
Istituto di Sociologia
Via A. Saffi, 15
I-61029 Urbino (PS)
Tel: +(39) 0722-2670
Fax: +(39) 0722-322437
yuri.kazepov@unimib.it
Public Organisation

**INSTITUT DE RECHERCHE JURIDIQUE
SUR L'ENTREPRISE ET LES RELATIONS
PROFESSIONNELLES (IRERP) - ESA
CNRS 7029**

Contact person: Marie-Armelle Souriac
Project coordinator: Nicole Kerschen
Université Paris X – UFR de Sciences
Juridiques
2, rue de Rouen
F-92001 Nanterre Cedex
Tel: +33 1 40 97 76 45/77 72

Fax: +
nkersche@u-paris10.fr
Public Organisation

**TILBURG UNIVERSITY/TISSER-
TILBURG INSTITUTE FOR SOCIAL AND
SOCIO-ECONOMIC RESEARCH/OSA-
INSTITUTE FOR LABOUR STUDIES**
Contact person: Prof.Dr. Ruud.J.A.
Muffels
Warandelaan 2, PO. Box 90153
NL-5000 LE Tilburg
Tel: +0031134662795
Fax: +0031134668068
Ruud.j.muffels@kub.nl
Public Organisation

**CISEP - CENTRO DE INVESTIGAÇÃO
SOBRE ECONOMIA PORTUGUESA**
Contact person: Carlos Farinha Rodrigues
Rua Miguel Lupi N° 20
P-1200-725 Lisboa
Tel: +351-21-3955745
Fax: +351-21-3967309
carlosfr@iseg.utl.pt
NGO

**FUNDACIÓ CENTRE D'INICIATIVES I
RECERQUES EUROPEES A LA
MEDITERRÀNIA (CIREM)**

Contact person: Xavier Matheu
Travessera de les Corts , 39-43 lat. 2^a pl.
E- 08028 Barcelona
Tel: +34 93 440 10 00
Fax: +34 93 440 45 60
xavier.matheu@cirem.es
NGO

**CENTRE FOR RESEARCH IN SOCIAL
POLICY, LOUGHBOROUGH UNIVERSITY**

Contact person: Sue Middleton
Centre for Research in Social Policy
Department of Social Sciences
Loughborough University
Loughborough
Leicestershire
LE 11 3TU
United Kingdom
Tel: +0044 (0) 1509 223372
Fax: +0044 (0) 1509 213409
CRSP@lboro.ac.uk
Public Organisation

5.23. INDE, Organização Cooperativa para a Intercooperação e o Desenvolvimento, CRL

Title of the project:

ACACIA

Duration (*in month*): 18 Estimated total cost (in €): 188622,17 Granted amount:

Identification ref. (SAGA n°): 2001/E2/014/1117

Lead Organisation:

INDE, ORGANIZAÇÃO COOPERATIVA PARA A INTERCOOPERAÇÃO E O DESENVOLVIMENTO, CRL

Av. Frei Miguel Contreiras 54, 3º

P- 1700-213 Lisboa

Tel: +351 21 843 58 70

Fax: + 351 21 843 58 71

inde@inde.pt

www.inde.pt

Contact Name:

Dra. Cristina CAVACO

ccavaco@inde.pt

**Type/Legal Status of
organisation:**

Private Non-Profit Making
Organisation (NGO)

Member States involved:

Spain, France, Portugal

Priority area for cooperation: 2

Action to help the most vulnerable.

Grounds of Social Exclusion to be addressed:

Target group:

Main objectives / Summary of the project:

The main idea underlying the project is to determine the existence of a large number of occupational and aggressive practices, specifically as regards the intermediaries involved in easing the social and occupational integration of the more fragile elements of society in terms of social exclusion. In view of the sizeable public-sector investment that they represent and the ways in which the various types of actors work, it will be necessary to arrive at an objective assessment of the various approaches and identify those that are positive in their impact, the differences between the approaches and the innovative potential that

they represent. The project will also produce instruments (methodological guides, toolbox) that may offer added value for any action undertaken under these approaches so that a register of common sense can be produced as well as any related perverse effects.

Partners involved in the project:

AJUNTAMENT DE GIRONA

Contact person: Josep Just i Rimbau
Project coordinator: M^a Pia Bosch i Codolà
Plaça del Vi, 1
E-17004 Girona
Tel: +34 972 419 404
Fax: +34 972 419 450
jjust@ajgirona.org
Public Organisation

CENTRE D'ETUDES DE L'EMPLOI

Contact person: Jean-François GERME
Project Coordinator: Patrick NIVOLLE
29, promenade Michel Simon
Le Descartes 1
29, promenade Michel Simon
F-93166 NOISY LE GRAND cedex
Tel: +33 1 45 92 68 00
Fax: +33 1 49 31 02 44
cee@mail.enpc.fr
Public Organisation

AIP/CCI — ASSOCIAÇÃO INDUSTRIAL PORTUGUESA/ CÂMARA DE COMÉRCIO E INDÚSTRIA

Contact person: João Pereira Bastos
Praça das Indústrias
Apartado 3200
EC Junqueira
P-1301-965 Lisboa
Tel: +351 21 3601000
Fax: 351 21 3641301
aip@aip.pt
NGO

CÂMARA MUNICIPAL DE ODEMIRA

Contact person: Dr.^a Paula Cristina Valentim Carrasco
Project Coordinator: Dr. António Manuel Viana Afonso
Praça da República
P- 7630 Odemira
Tel: +351 283 320 900
Fax: +351 283 327 323
cmod@mail.telepac.pt
Public Organisation

TAIPA – ORGANIZAÇÃO

COOPERATIVA PARA O DESENVOLVIMENTO INTEGRADO DO CONCELHO DE ODEMIRA
Contact person: Helder Guerreiro
Rua Alexandre Herculano, 1 – 1^oand.
P- 7630-147 Odemira
Tel: +351 283 322 130
Fax: +351 283 322 142
Taipa@mail.pt
NGO

ADL - ASSOCIAÇÃO DE DESENVOLVIMENTO DO LITORAL ALENTEJANO

Contact person: Paula Carneiro
Parque de Feiras e Exposições - Entrada Norte
P-7540-230 Santiago do Cacém
Tel: +351 269 827233
Fax: +351 269 829744
ad.litoral.alentejano@ip.pt
Private Organisation

5.24. Instituto Municipal de Formación y Empleo, Ayuntamiento de Granada

Title of the project:

IMPAREM, PARTICIPATED RESEARCH: CO-OPERATION ON THE SEARCH OF NEW APPROACHES FOR THE SOCIAL AND LABOUR INTEGRATION OF PEOPLE IN SITUATION / RISK OF SOCIAL EXCLUSION

Duration (*in month*): 18 Estimated total cost (in €): 152839,27 Granted amount:
Identification ref. (SAGA n°): 2001/E2/014/1122

Lead Organisation:

INSTITUTO MUNICIPAL DE FORMACIÓN Y EMPLEO, AYUNTAMIENTO DE GRANADA

Avenida Divina Pastora, 7 - 9 bajos
E-1812 Granada
Tel: +34 958 805 036
Fax: +34 958 805 156
imfe@imfegranada.es
www.imfegranada.es

Contact Name:

Sra Amelia ROMACHO
aroma@imfegranada.es

Type/Legal Status of organisation:

Local Authority

Member States involved:

Spain, Italy, France

Priority area for cooperation: 3

Promoting innovative approaches in policies for combating exclusion through the exchange of good practices

Grounds of Social Exclusion to be addressed:

Target group:

Main objectives / Summary of the project:

The aim is to develop a cooperation project (municipalities of Var, Granada and Rome) over a period of eighteen months that will establish new approaches to encourage the participation of the actors involved in training and employment activities aimed at persons and groups who are socially marginalised or vulnerable; by adopting a process of investigation with participatory action to study a wide range of experience working with investigatory groups, public

authorities and other associated bodies. A catalogue of conclusions and best practice will be drawn up for distribution throughout the local, national and European networks resulting from this project and from other projects already underway, including those organised by the co-applicant bodies. A seminar will be held, a CD and a web page produced along with a final report setting out the conclusions.

Partners involved in the project:

CROIX-ROUGE FRANÇAISE – INSTITUT DE FORMATION EN SCIENCES DU TRAVAIL

Contact person: Cristina De Robertis
37 avenue Lazare Carnot – B.P. 5510
F–83097 TOULON CEDEX
Tel: +33 4 94 91 93 81
Fax: +33 4 94 92 29 13
Crf.ifts@wanadoo.fr
Private Organisation

COOPERATIVA OESSE – OFFICINA SOCIALE

Contact person: Francesco Calmarini
Project Coordinator: Paolo Raciti
Viale di Trastevere, 209
I–00153 Roma
Tel: +39 06 5803084
Fax: +39 06 58179842
oesse@oesse.org
NGO

UNION DIACONALE DU VAR

Contact person: Denis Mangeolle
17 Fd. Commandant Nicolas
F–83000 Quartier Montety
Tel: +33 4 94 24 45 90
Fax: +33 4 94 24 90 03
Udv@free.fr
NGO

SEMINARIO DE ESTUDIOS PARALA INTERVENCIÓN SOCIAL Y EDUCATIVA

Contact person: Francisco Fernández Palomares/Enrique Raya Lozano
Project Coordinator: Carmen Vilchez IMFE
Facultad de CC. De la Educación
Campus de Cartuja s/n. Universidad de Granada
E–18071 Granada
Tel: +34 958 243979
Fax: +34 958 248009
Ffernan@ugr.es y eraya@ugr.es
Public Organisation

UNIVERSITÀ DEGLI STUDI DI TERAMO – FACOLTÀ DI SCIENZE POLITICHE, DIPARTAMENTO DI TEORIA DEI SISTEMI E DELLE ORGANIZZAZIONI

Contact person: Prof. Salvatore Rizza
Viale Crucioli, 122
I–64100 Teramo (TE)
Tel: +39 0861/266527
Fax: +39 0861/240243
Segdtso@dtso.spol.unite.it
Public Organisation

5.25. Institut für Finanzdienstleistungen e.V.

Title of the project:

FINANCIAL LITERACY: FINANCIAL SERVICES, EDUCATION AND SOCIAL EXCLUSION

Duration (*in month*): 16 Estimated total cost (in €): 335089,93 Granted amount:

Identification ref. (SAGA n°): 2001/E2/014/1123

Lead Organisation:

INSTITUT FÜR FINANZDIENSTLEISTUNGEN E.V.

Rödingsmarkt 31-33
D-20459 Hamburg
Tel: +49 40 30 96 91-0
Fax: +49 40 30 96 91-22
iff@iff-hamburg.de
www.iff-hamburg.de

Contact Name:

Prof. Udo REIFNER

Udo.Reifner@iff-hamburg.de

Type/Legal Status of organisation:

Private Non-Profit Making
Organisation (NGO)

Member States involved:

Germany, France, Belgium, Italy, United Kingdom

Priority area for cooperation: 1

Conducting and disseminating research making for a better understanding of social exclusion

Grounds of Social Exclusion to be addressed:

Target group:

Main objectives / Summary of the project:

In modern Credit Society, financial services play an important part in opportunities but also in discrimination and social exclusion. Poor people represent a high risk, high cost and low return investment. This research will investigate the extent to which exclusion and the extra costs which burden the poor are linked to their financial education and what may be done to improve that situation. It will draw on research conducted in the USA to study financial literacy practice in five EU Member States. With special area report it will also draw on the special expertise of the project partners. A joint critical report will be

prepared, addressing both objective constraints on the use of financial services and the subjective conditions to use this offer. Both themes will be given equal weight in the analysis of the causes of social exclusion and the formulation of proposals for combating it through financial education embedded into the provision of services. The project will take advantage of the opportunity presented by the participation of seven institutions (including a parallel organisation in New York) in the financial literacy work by developing a database within the framework of IFF's financial clearing house database FIS Money Advice, which is available on the Internet, in order to promote best practice and make available examples and materials.

Partners involved in the project:

**ANIL / ASSOCIATION NATIONALE
POUR L'INFORMATION SUR LE
LOGEMENT**

Contact person: Bernard Vorms
Project Coordinator: Jean Bosvieux
2, boulevard Saint-Martin
F-75010 Paris
Tel: +33 1 42 02 05 50
Fax: +33 1 42 41 15 10
anil@wanadoo.fr
NGO

UNIVERSITY OF YORK

Contact person: Prof. Janet Ford
Centre for Housing Policy
University of York
Heslington
Y010 5DD York
United Kingdom
Tel: +44 1904 433690
Fax: +44 1904 432318
Jrf3@york.ac.uk
Public Organisation

**FONDAZIONE GIORDANO
DELL'AMORE**

Contact person: Prof. Laura Viganò
Project Coordinator: Prof. Luisa
Anderloni
Via San Vigilio, 10
I-20142 Milano (MI)
Tel: +39 02 8135341
Fax: +39 02 8137481
info@fgda.org
NGO

**INSTITUT NATIONAL DE LA
CONSOMMATION - INC**

Contact person: Chantal Martin
80 rue Lecourbe
F-75732 Paris Cedex 15
Tel: +33 1 45 66 20 78
Fax: +33 1 45 66 21 70
c.martin@inc60.fr
Public Organisation

**OBSERVATOIRE DU CRÉDIT ET DE
L'ENDETTEMENT**

Contact person: Nadine Fraselle
Avenue Général Michel 1A
B-6000 Charleroi
Tel: +32 71 71 33 12 59
Fax: +32 71 32 25 00
info@observatoire-credit.be
Private Organisation

5.26. Associazione Irene - Iniziative, Ricerche Esperienze Nuova Europa

Title of the project:

I.W.I. IMMIGRATED WOMEN INTEGRATION - THE EUROPEAN NETWORK AGAINST SOCIAL EXCLUSION

Duration (*in month*): 16 Estimated total cost (in €): 132494,36 Granted amount:

Identification ref. (SAGA n°): 2001/E2/014/1127

Lead Organisation:

ASSOCIAZIONE IRENE - INIZIATIVE, RICERCHE ESPERIENZE NUOVA EUROPA

P.zza san Giorgio, 2
I-20123 Milano
Tel: +39 02 805 7196
Fax: +39 02 805 7333
irene@irene.mi.it
www.irene.mi.it

Contact Name:

Dott.ssa Gabriella MERLO

irene@irene.mi.it

Type/Legal Status of organisation:

Private Non-Profit Making Organisation (NGO)

Member States involved:

Greece, Spain, Belgium; Italy

Priority area for cooperation: 3

Promoting innovative approaches in policies for combating exclusion through the exchange of good practices

Grounds of Social Exclusion to be addressed:

Target group:

Main objectives / Summary of the project:

The aim of the project is to supply operators within the institutions, the NGOs and private undertakings in the social sector and the social partners with the knowledge, methods and approaches that are most suitable for the social and labour-market integration of female immigrants from non-Community countries. The project will produce web pages as a forum for the exchange and sharing of examples of best practice as they can be made easily accessible within institutions, or within educational training cultural health-care or social bodies. The guidelines for knowledge transfer on the methods and solutions adopted in

the countries of the European Union that take account of the specific nature of action on behalf of female immigrants and to define courses of action. The international meetings for research on and gathering of examples of best practice plus a seminar for the dissemination of the guidelines. The involvement of partners from such important European regions as Lombardy, Belgium's Walloon region and Madrid will help to highlight the aspects of the system that will have an impact on the guidelines to be drawn up.

Partners involved in the project:

**COOPERATIVA SOCIALE VESTI
SPERANZA A.R.L.**

Contact person: MariaTeresa
Mantegazzini
Project Coordinator: Carla Torno
Via Tobagi 5
I-20081 Abbiategrasso
Tel: +39 029465154
Fax: +39 0294050175
coopvest@netsys.it
NGO

**REGIONE LOMBARDIA – DIREZIONE
GENERALE GIOVANI, SPORT E PARI
OPPORTUNITÀ**

Contact person: Giovanna Bassi
Project Coordinator: Donata Corelli
Via Fabio Filzi, 22
I-20124 Milano
Tel: +39 02 676 55 220
Fax: +39 02 676 54 594
Politiche_Femminili@regione.lombardia.it
Public Organisation

ORIENTAMENTO LAVORO ONLUS

Contact person: Pia Zuccolin
Piazza Aspromonte 26
I-20131 Milano
Tel: +39 02 394 00 100
Fax: +39 02 295 26 853
corami@tin.it
NGO

DIRECCIÓN GENERAL DE LA MUJER

Contact person: Asunción Miura
C/Gran Via 12
E-28013 Madrid
Tel: +34 91 420 86 36
Fax: +34 91 420 85 89
asuncion.miura@comadrid.es
Private organisation

**RESEARCH CENTRE FOR WOMEN'S
AFFAIRS**

Contact person: Ms Mata Kaloudaki
109 Asklepiou street
EL-11472 Athens
Tel: +301 362 8104
Fax: +301 361 9287
ginaika@otenet.gr
NGO

**MINISTÈRE DE LA RÉGION
WALLONNE –DIRECTION GÉNÉRALE
DE L'ACTION SOCIALE ET DE LA
SANTÉ**

Contact person: Michel Villan
100, Avenue Bovesse
B-2100 Namur
Tel: +32 81 32 73 51
Fax: +32 81 32 72 15
m.villan@mrw.wallonie.be
Public Organisation

5.27. Istituto Antonio Provolo - I.A.P.

Title of the project:

KALEIDOS: MODELLO DI SERVIZI INTEGRATI PER IL BENESSERE DEI NON UDENTI

Duration (*in month*): 12 Estimated total cost (in €): 180 000 Granted amount:

Identification ref. (SAGA n°): 2001/E2/014/1134

Lead Organisation:

ISTITUTO ANTONIO PROVOLO - I.A.P.

Via Berardi, 9
IT-37139 Chievo (Verona)
Tel: +39 045/8167300
Fax: +39 045/575396
e-mail: mimaf@tiscalinet.it
Website: www.provolo.it

Contact Name:

Sig. Orazio ZENORINI

ozenorini@provolo.it

Type/Legal Status of organisation:

Private Non-Profit Making Organisation

Member States involved:

Italy, United Kingdom, France, Spain, Ireland

Priority area for cooperation: 2

Action to help the most vulnerable

Grounds of Social Exclusion to be addressed:

Target group:

Main objectives / Summary of the project:

The aim of the project is to organise the following activities: 1. Improving access to health care and social services for diagnosis, rehabilitation and treatment for the deaf. 2. To ease access to education and training for minors who are deaf. 3. To ensure high-quality workplaces for workers who are deaf. The project will also compare what is being done at local level on the basis of such activities as a) the testing of techniques for the treatment and rehabilitation of a person's hearing within the context of body language and psycho-motor expression, of music and dance (eurhythmia) and of logopedics and logogenia; b) experimental work with innovative (dedicated or otherwise) school integration, integrated training, self-

employment and monitoring at work; c) devising and developing information and communication technologies specifically to target treatment and rehabilitation as well as for the training and preparation for employment.

Partners involved in the project:

CNA-CEFAG

Contact name : Pépita Jodar
61 rue Orfila
F-75020 Paris
Tel : +33 1 43 49 42 93
Fax : +33 1 43 49 46 37
Pjodar@cna-cefag.org
Public organisation

ROYAL ASSOCIATION FOR DEAF PEOPLE

Contact name : Mr Jonatha Isaac
Walsingham Road, Colchester, Essex
CO2 7BP
United Kingdom
Tel : +44 0 1206 509 509
Fax : +44 0 1206 769 755
j.isaac@btinternet.com
Private non-profit making / charity
organisation

ALONSO Y GARAY S.L. - ASIMAG

Contact name : Begoña Azpiaz Azcuenaga
Alda. Urquijo 85 - Entpta
E-48013 Bilbao
Tel : +34 94 439 92 69
Fax : +34 94 439 87 04
Proyectos@asimag.es
Private

MOY VALLEY IRD NORTH MAYO

WEST SLIGO - LDP DEPT

Contact name : Breda Murray
Project coordinator : Bridie Conway
Unit 5 The Quay
Quay Road
Ballina Co Mayo
Ireland
Tel : +353 0035 96 72951
Fax : +353 0035 96 72950
bmmurray@eircom.net
mvrld@eircom.net
Private non-profit making / charity
organisation

5.28. National Technical University of Athens, Research Committee

Title of the project:

FIELD STUDY OF EX-CONVICTS' REINTEGRATION INTO LABOUR MARKET AND SOCIAL LIFE

Duration (*in month*): 18 Estimated total cost (in €): 209858,57 Granted amount:

Identification ref. (SAGA n°): 2001/E2/014/1149

Lead Organisation:

NATIONAL TECHNICAL UNIVERSITY OF ATHENS, RESEARCH COMMITTEE

9, Iroon Politechniou str.
EL-15780 Zografos ATHENS
Tel: +30 107723227
Fax: +30 107723228
e-mail: n.markatos@ntua.g
Website: www.ntua.gr

Contact Name:

Prof. Nikolas MARKATOS

n.markatos@ntua.gr

Type/Legal Status of organisation:

Public Organisation

Member States involved:

Greece, Germany, France

Priority area for cooperation: 1

Conducting and disseminating research making for a better understanding of social exclusion

Grounds of Social Exclusion to be addressed:

Target group:

Main objectives / Summary of the project:

The major objective of this proposal is to place the issue of prisoner inclusion into the more general debate of social exclusion related to poverty, marginality, social and economic inequality and, to a lesser extent, homelessness. The proposal aims at enhancing the effectiveness of the Community and Member States policies and actions directed to the *cause of a successful re-integration of offenders into public life and employment* by the implementation of a policy oriented research; the proposal will study the Curriculum Vitae of a number of ex-convicts in all three countries in order to identify the difficulties they had to integrate the labour market and the problems they faced. Concrete outputs are: European level

conference, press conferences, a CD-Rom offered to European and national relevant bodies, a Website, the editing of a white book and a significant number of publications.

Partners involved in the project:

**REM LABORATORY, DPT. OF
GEOGRAPHY, UNIVERSITY OF THE
AEGEAN**

Contact person: Prof. Lila Leontidou
Project Coordinator: Dr. Alex Afouxenidis
30, Boulgaroktonou str.
EL-11472 Athens
Tel: +30-107225986
Fax: +30-107237196
l.leontidou@geo.aegean.gr
Research Center

**UNIVERSITÉ PARIS 8 VINCENNES-SAINT-
DENIS – DÉPARTEMENT DES SCIENCES
POLITIQUES**

Contact person: Cavouriaris Efthimios
2, rue de la Liberté
F-93526 Saint-Denis Cedex
Tel: +33 1 49 40 66 31
Fax: +33 1 49 40 65 02
cavour@wanadoo.fr
Public Organisation

**INSTITUTE FOR APPLIED ECONOMIC
RESEARCH**

Contact person: Dr. Sigfried CASPAR
Project Coordinator: Gunther KLEE
Ob dem Himmelreich 1
D-72074 Tübingen
Tel: +49 7071 98960
Fax: +49-7071-989699
iaw@iaw.edu
NGO

5.29. Royal National Institute for the Blind

Title of the project:

THE EMPLOYMENT CONTINUUM

Duration (*in month*): 15 Estimated total cost (in €): 178066 Granted amount:

Identification ref. (SAGA n°): 2001/E2/014/1165

Lead Organisation:

ROYAL NATIONAL INSTITUTE FOR THE BLIND

224 Great Portland Street
W1N 6AA London
United Kingdom
Tel: +44 115 852 6705
Fax: +44 115 852 6701
e-mail: philippa.simkiss@rnib.org.uk
Website: www.rnib.org.uk

Contact Name:

Mr Gordon DRYDEN

gordon.dryden@rnib.org.uk

Type/Legal Status of organisation:

Private Non-Profit Making
Organisation (NGO)

Member States involved:

United Kingdom, Sweden, Ireland

Priority area for cooperation: 3

Promoting innovative approaches in policies for combating exclusion through the exchange of good practices

Grounds of Social Exclusion to be addressed:

Access to the labour market

Target group:

Disabled people

Main objectives / Summary of the project:

To explore ways to support the growth and effectiveness of the Intermediate Labour Market (ILM) and develop a shared understanding of how to promote the inclusion of visually impaired people, to enable us to influence the policy making process to promote sustained employment for these individuals. Partners will conduct research on a series of pre-determined topics, identifying innovative approaches and conducting small scale studies of the experience of providers and beneficiaries within the ILM. Partners will then share their findings through a

series of specialist seminars held in partner countries. Bringing participants together in each country will enhance the opportunities for intensive and highly focused discussions and a seminar format will enable other organisations and individuals to participate with the core partners. Outcomes will include reviews of research on models of the ILM in partner countries, reports from seminars, and a joint strategy for research and policy development.

Partners involved in the project:

**NATIONAL COUNCIL FOR THE BLIND
OF IRELAND**

Contact person: Desmond P. Kenny

Whitworth Road

Drumcondra

Dublin

Ireland

Tel: +353 1 830 7033

Fax: +353 1 830 7787

Info@ncbi.ie

NGO

**AF RESURS RESEARCH AND
DEVELOPMENT SECTION,****ASSESSMENT INSTITUTE, NATIONAL****LABOUR MARKET – BOARD OF****SWEDEN**

Contact person: Kerstin Eriksson

PO Box 8188

S-FE 200 41 Malmö

Tel: +46 40 672 7637

Fax: +46 40 672 7650

Public Organisation

5.30. SIGN

Title of the project:

SIGN NET

Duration (*in month*): 18 Estimated total cost (in €): 191378,98

Granted amount:

Identification ref. (SAGA n°): 2001/E2/014/1169

Lead Organisation:

SIGN

13 Station Road
HP9 1YP Beaconsfield
United Kingdom

Tel: +44 1494 816777

Fax: +44 1494 812555

e-mail:

sign@charityheadoffice.freemove.co.uk

Website: none

Contact Name:

Mr Steve POWELL

sign@charityheadoffice.freemove.co.uk

Type/Legal Status of organisation:

Private Non-Profit Making
Organisation (NGO)

Member States involved:

United Kingdom, Greece, Finland

Priority area for cooperation: 2

Action to help the most vulnerable.

Grounds of Social Exclusion to be addressed:

Target group:

People with mental health and deafness problem

Main objectives / Summary of the project:

This project aims to foster the social integration of people considered to be more vulnerable within society, especially those individuals at risk of encountering particular integration problems due to their having a disability. In this particular project it is targeted at those with mental health and deafness. The specific objective of the project will be the development, testing and promotion of an Internet based on-line communication software tools (coupled with an off-line CD-Rom) that is targeted specifically to individuals throughout Europe with mental health and deafness problems (and those who are associated with them) in order to promote their equality of access to the services they need and thus reduce their exclusion from society. The project will include an on-line Sign Language

course for those people who will come in to contact with people with a mental health and deafness problem so they will be able to communicate effectively with them - this could be family members, carers, health service staff, employers or trainers.

Partners involved in the project:

MILLENNIUM 3 INTERNATIONAL LTD

Contact name : John-Robert Curtin

Project coordinator : Rob Allen

7 Bladons Walk

Kirk Ella

Hull HU10 7AX

United Kingdom

Tel : +44 1482 653858

Fax : +44 1482 659281

Info@M3INT.com

Private

THE FOUNDATION FOR EUROPEAN INITIATIVES

Contact name : Paul Quantock

Project coordinator : Kevin Osmond

PO Box 49

Willerby

Hull HU10 7YB

United kingdom

Tel : +44 1482 651695

Fax : +44 1482 659281

Info@tfei.org.uk

Non-governmental and Not-for-profit

TULOSSILTA LTD

Contact name : Paeivi Siltanen

Aaltosenkatu 27-29

FIN-33500 Tampere

Tel : +358 3 222 72 50

Fax : +358 3 222 72 51

Tulossilta@tulossilta.fi

Private

IDEC S.A.

Contact name : Sofia Spiliotopoulou

Project coordinator : Efi Kranidioti

96, Iroon Polytechniou Ave.

EL-18536 Piraeus

Tel : +30 1 428 62 27

Fax : +30 1 428 62 28

Efi@idec.gr

Private

EUROPEAN SOCIETY FOR MENTAL HEALTH AND DEAFNESS - ESMHD

Contact name : Bob Clowes

Daylesford

Stokeinteignhead

Newton Abbot

South Devon TQ12 4QD

United Kingdom

Tel + Fax : +44 1626 87 33 32

Bob@esmhd.org

European NGO

5.31. Solco S.r.l. - Servizi per l'Organizzazione del Lavoro e la Creazione di Occupazione

Title of the project:

ALCOHOL & THE WORKPLACE - A EUROPEAN COMPARATIVE STUDY ON PREVENTIVE AND SUPPORTIVE MEASURES FOR PROBLEM DRINKERS IN THEIR WORKING ENVIRONMENT

Duration (*in month*): 16 Estimated total cost (in €): 180008,07 Granted amount:
Identification ref. (SAGA n°): 2001/E2/014/1173

Lead Organisation:

SOLCO S.R.L. - SERVIZI PER L'ORGANIZZAZIONE DEL LAVORO E LA CREAZIONE DI OCCUPAZIONE

Via Carlo Bartolomeo Piazza 13
I-00161 Roma
Tel: +39 06 44 29 27 17
Fax: +39 06 44 29 07 19
e-mail: Solco@mclink.it
dgruiters@e-solco.it
Website: www.e-solco.it

Contact Name:

Mr. Salvatore MESSINA

solco@mclink.it

Type/Legal Status of organisation:

Private Profit-Making Organisation

Member States involved:

Italy, United Kingdom, The Netherlands

Priority area for cooperation: 2

Action to help the most vulnerable.

Grounds of Social Exclusion to be addressed:

Target group:

Main objectives / Summary of the project:

The realisation of a European comparative study on alcohol related problems in the workplace, in which existing best practices in companies will be identified and analysed, will enable the development of a European strategy to encourage a better dissemination of information, as well as raise awareness of the problem among employees and companies in Europe. It will also provide guidelines and tools for the adoption of preventive and supportive measures by companies for employees with alcohol problems, who would otherwise risk losing their jobs and,

as a consequence, risk social exclusion. Furthermore the study will seek to identify methodologies that will encourage the dialogue and exchange of experiences between European companies. This bottom-up approach will contribute to the design of social policies to reduce unemployment and social exclusion at a European level.

Partners involved in the project:

ADDICTION RESEARCH INSTITUTE ROTTERDAM

Contact person: M.J. Audeaerd
Project Coordinator: Prof.Dr. H.F.L.
Garretsen
Heemraadsingel 194
NL-3021 DM Rotterdam
Tel: 31 10 425 3366
Fax: 31 10 276 3988
Audenaerd@ivo.nl
Private Organisation

SOCIETÀ ITALIANA DI ALCOLOGIA

Contact person: Valentino Patussi
SIA – c/o Centro di Alcolologia e della
Nutrizione Azienda Ospedaliera di
Careggi Università degli Studi di
Firenze (Palazzo Cliniche Mediche)
Viale Morgagni 85
I-50134 Firenze
Tel: +39 55-417222
Fax: +39 55-4222409
Sia@dfc.unifi.it
Private Organisation

ALCOHOL CONCERN

Contact person: Mary-Ann McKibben
Waterbridge House
32-36 Loman Street
SE1 0EE London
United Kingdom
Tel: +44 20 7928 7377
Fax: +44 20 7928 4644
Mamckibben@alcoholconcern.org.uk
NGO

5.32. Stadt Göttingen, Amt für Beschäftigungsförderung

Title of the project:

STRATEGIES&EFFECTS - TRANSNATIONAL RESEARCH ON UNEXPECTED EFFECTS OF LOCAL STRATEGIES AGAINST SOCIAL EXCLUSION

Duration (*in month*): 18 Estimated total cost (in €): 263323,22 Granted amount:

Identification ref. (SAGA n°): 2001/E2/014/1175

Lead Organisation:

<p>STADT GÖTTINGEN, AMT FÜR BESCHÄFTIGUNGSFÖRDERUNG</p>

Bürgerstraße 48
D-37073 Göttingen
Tel: +49 551 - 400 - 2318
Fax: +49 551 - 400 - 2888
e-mail: K.Geide@goettingen.de
Website: www.goettingen.de

Contact Name:

Herrn Klaus Geide

K.Geide@goettingen.de

Type/Legal Status of organisation:

Local authority

Member States involved:

Germany, Austria, Denmark

Priority area for cooperation: 1

Conducting and disseminating research for a better understanding of social exclusion

Grounds of Social Exclusion to be addressed:

Target group:

Main objectives / Summary of the project:

The project proposed will examine and evaluate the impact of municipal integration policies to combat social marginalisation that are currently counterproductive. The main question underlying the investigation is whether and to what extent the unintentional side effects of municipal integrational policy can occur that in turn give rise to processes of social exclusion. There will be an international comparison of practice in the three municipalities concerned: Aarhus/DK, Göttingen/DE and Graz/AT to investigate possible marginalising effects using as an example the municipal employment promotion measures in

place. The objective of the project being proposed is the development of methods with the aid of which the assumed marginalising effects of municipal integration policy can be recorded and evaluated. The methods developed will produce a broader understanding of social marginalisation, in particular of the effects of strategies to combat social marginalisation. Firm results expected include a Internet home page for the project, three presentational conferences, plus the publication of a CD-ROM of the results.

Partners involved in the project:

SOCIOLOGISK ANALYSE

Contact name : Thorsten Braun

Rolighedsvej 45 B

DK- 8240 Risskov

Tel : 0045 70222273

Fax : 0045 70222263

tb@sociologisk-analyse.dk

Private organisation

PERIPHERIE INSTITUT FÜR**PRAXISORIENTIERTE****GENDERFORSCHUNG**

Contact name : Mag. Dr. Doris Kapeller

Schwimmschulkai 6

A-8010 Graz

Tel : +43 (0)316 - 672864

Fax : +43 (0)316 - 672864

dor.kapeller@kfunigraz.ac.at

Public organisation (Verein)

5.33. Steunpunt Mensen Zonder Papieren vzw. - SMZP

Title of the project:

BOOK OF SOLIDARITY

Duration (*in month*): 18 Estimated total cost (in €): 170427,12

Granted amount:

Identification ref. (SAGA n°): 2001/E2/014/1178

Lead Organisation:

STEUNPUNT MENSEN ZONDER PAPIEREN VZW. - SMZP

Lostraat 89

B-1703 Schepdaal

Tel: +32 2 274 14 31

Fax: + 32 2 274 14 48

e-mail: steunpunt.mzp.bru@wanadoo.be

Website: None

Contact Name:

Mr Didier Vanderslycke

kms@broederlijkdelen.be

**Type/Legal Status of
organisation:**

Private Non-Profit Making
Organisation (NGO)

Member States involved:

Belgium, The Netherlands, Germany

Priority area for cooperation: 3

Promoting innovative approaches in policies for combating exclusion through the exchange of good practices

Grounds of Social Exclusion to be addressed:

Target group:

Main objectives / Summary of the project:

The project aims at rendering visible the manifold ways humanitarian support is being given to sans papiers residing in Europe, and wants to present a solid ethical and legal basis for this humanitarian support to avoid that the latter be discouraged, forbidden or penalised. This will be done by producing several 'Books of Solidarity', containing besides juridical information also examples of good practices, and analysing the problems that are met by organisations and citizens rendering support to undocumented migrants. The last report will contain conclusions and recommendations addressing NGOs as well as the relevant

policymakers at local, national and European level. These reports will be distributed and made available on a website that will function as a permanent platform for exchange of expertise and experience. Besides this, in all the ten countries involved workshops will be organised for representatives of NGOs that give support to ‘sans papiers’ in order to deepen their insight in the possibilities of committing civil society at large as well as public institutions on the local level.

Partners involved in the project:

PICUM (PLATFORM FOR INTERNATIONAL COOPERATION ON UNDOCUMENTED MIGRATION)

Contact name : Ms. Verbruggen Nele
Gaucheretstraat 164
B-1030 Brussels
Tel : + 32 2 274.14.39
Fax : + 32 2 274.14.48
info@picum.org
NGO

ASKV/SV

Contact name : Dominique van Huijstee
Haarlemmerplein 17
NL-1013 HP Amsterdam
Tel : +31 20 6272408
Fax : +31 20 4203208
askvsv@dds.nl
NGO

**BUNDESARBEITSGEMEINSCHAFT
‘ASYL IN DER KIRCHE’**

Contact name : Hildegard Grosse
Berliner Freiheit 16
D-53111 Bonn
Tel : +49/228/965.03.42
Fax : +49/228/965.03.43
info@kirchenasyl.de
NGO

5.34. Asociación de Mujeres para la Reinserción Laboral

Title of the project:

ESTRATEGIAS PARA LA INCLUSIÓN: ESTUDIO DE LAS COMPETENCIAS CLAVE PARA EMPLEABILIDAD EN LOS COLECTIVOS EN RIESGO DE EXCLUSIÓN.

Duration (*in month*): 18 Estimated total cost (in €): 254115,04 Granted amount:

Identification ref. (SAGA n°): 2001/E2/014/1182

Lead Organisation:

ASOCIACIÓN DE MUJERES PARA LA REINSERCIÓN LABORAL

Bruc, 5, 1º 2ª
E-08010 Barcelona
Tel: +34 9326 80257
Fax: +34 9326 84167
e-mail: surt@pangea.ogr
Website: www.surt.org

Contact Name:

Sra Fina Rubio
finarub@teleline.es

Type/Legal Status of organisation:

Private Non-Profit Making Organisation (NGO)

Member States involved:

Spain, The Netherlands, Italy, France, Finland

Priority area for cooperation: 2

Action to help the most vulnerable

Grounds of Social Exclusion to be addressed:

Target group:

Main objectives / Summary of the project:

The project will study the key skills needed for employability in the following groups at risk of social exclusion: women over 40 in long-term unemployment, female immigrants and women having no vocational qualifications. The study will include a field study, the design of a diagnostic tool, the joint drafting of strategies and the exchange of innovative experience. The project will include the involvement of four transnational partners who are representative of the problems that exist throughout the EU, various experts who collaborate with the SURT,

other associations working in the field, the groups of women and the competent public authorities responsible for drafting public policy. The products that will ultimately be obtained and the dissemination methods used will be a web page, a European conference in Brussels to conclude the project, the publication of a book describing the conclusions of the project, the publication of a CD-ROM with the diagnostic tool for employability skills. The publication of a brochure describing the project; information from the five transnational seminars in Barcelona, Paris, Rome, Holland and Finland.

Partners involved in the project:

THE INTERNATIONAL TRAINING CENTRE FOR WOMEN I.T.W.

Contact name : Drs Elsje Dijkgraaff
Herengracht 213
PO Box 3611
NL-1001 AK Amsterdam
Tel : +31 20 420 52 43
Fax : +31 20 626 31 78
Itw@euronet.nl
Private organisation

VIITTAKIVI INTERNATIONAL CENTRE (VIITTAKIVEN OPISTO)

Contact name : Ms Teija Enoranta
Viittakiventie 75
FIN-14700 Hauho
Tel : +358 3 6448 20
Fax : +358 3 6448 222
Vic@ofw.fi
Teija.enoranta@ofw.fi
www.ofw.fi/viittakivi
Private organisation

C.L.P. COMITÉ DE LIAISON POUR LA PROMOTION DES MIGRANTS ET DES PUBLICS EN DIFFICULTÉ D'INSERTION

Contact name : M. Joseph Le Corre
Project coordinator : Mr Jonathan Kaplan
35, rue Chanzy
F-75011 Paris
Tel : +33 1 55 25 22 00
Fax : +33 1 55 25 22 01
Info@clp.asso.fr
Non-profit national organisation

CRAS - CENTRE RESEARCH ON SOCIAL AFFAIRS

Contact name : Ms Raffaella Milazzo
Project coordinator : Mr Giuseppe Di Giovambattista
Corso Vittorio Emanuele II, 269
IT-00186 Roma
Tel : +39 06 6810021
Fax : +39 06 68130372
Info@crasitalia.it
Private research centre

5.35. The Bridge Child Care Development Service

Title of the project:

CHILDREN IN STATE CARE AND MENTAL HEALTH

Duration (*in month*): 17 Estimated total cost (in €): 177132,71

Granted amount:

Identification ref. (SAGA n°): 2001/E2/014/1184

Lead Organisation:

THE BRIDGE CHILD CARE DEVELOPMENT SERVICE

First Floor
34 Upper Street
N1 0PN
London
United Kingdom
Tel: +44 20 7704 2386
Fax: +44 20 7704 2387
e-mail: enquiries@bccds.demon.co.uk
Website: None

Contact Name:

Ms Renuka Jeyarajah Dent

enquiries@bccds.demon.co.uk

Type/Legal Status of organisation:

Private Non-Profit Making Organisation (NGO)

Member States involved:

United Kingdom, Greece, Belgium

Priority area for cooperation: 2

Action to help the most vulnerable

Grounds of Social Exclusion to be addressed:

Target group:

Main objectives / Summary of the project:

To create a profile of children in state care across Europe in partner countries and in doing so identify the extent of mental health problems for children and young people in state care. This study will also look at identifying risk factors linked to mental health problems for children in state care in order to develop a better understanding of outcomes for children in state care in partner countries. Finally the study will identify existing models of practice across Europe in partner countries with a view to sharing what works and best practice models in order to address mental health problems for children and young people in state care as such problems lead to social exclusion.

Partners involved in the project:

BARNARDO'S

Contact Name : Dr Darshan Sachdev
Policy, Planning and Research Unit
Tanners Lane, Barkingside
Ilford, Essex
IG6 10G
United kingdom
Tel : +44 020 8498 7741
Fax : +44 020 8498 7086
Darshan.sachdev@barnardos.org.uk
Voluntary Organisation / Charity

**SECTION OF ORTHOPEDAGOGICS
FACULTY OF PSYCHOLOGY &
EDUCATIONAL SCIENCES - KUL**

Contact Name : Prof. Dr. Walter Hellinckx
Katholic Universiteit Leuven
Vesaliusstraat 2
B-3000 Leuven
Tel : +32 16 32 62 36
Fax : +32 16 32 59 33
Walter.hellinckx@ped.kuleuven.ac.be
University

INSTITUTE OF CHILD HEALTH

Contact person: Assoc. Prof. Dr. P. Lagos
Project coordinator : Dr Helen Agathonos-
Georgopoulou
Department of family relations - Centre for the
study and prevention of child abuse and
neglect
7 Fokidos
EL-11526 Athens
Tel : +30 1 7793 648/7715 791
Fax : +30 1 7793 648
Agatinst@otenet.gr
Agathonos@hotmail.com
Public research centre

5.36. Unión de Cooperativas Madrileñas de Trabajo Asociado - UCMTA

Title of the project:

FROM OUTSIDERS TO INSIDERS

Duration (*in month*): 15 Estimated total cost (in €): 207856,75

Granted amount:

Identification ref. (SAGA n°): 2001/E2/014/1186

Lead Organisation:

UNIÓN DE COOPERATIVAS MADRILEÑAS DE TRABAJO ASOCIADO - UCMTA

Valverde, 13, 4ª planta

E-28004 Madrid

Tel: +34 91 532 24 88

Fax: +34 91 522 59 80

e-mail: programaseuropeos@ucmta.es

Website: www.ucmta.org

Contact Name:

Sr. Ruben Villa Benayas

presidencia@ucmta.es

**Type/Legal Status of
organisation:**

Private Non-Profit Making
Organisation (NGO) -
Employers' Organisation

Member States involved:

Spain, Italy, Denmark

Priority area for cooperation: 3

Promoting innovative approaches in policies for combating exclusion through the exchange of good practices

Grounds of Social Exclusion to be addressed:

Target group:

Main objectives / Summary of the project:

A study on good practices will be carried out which focuses specifically on social and labour market integration for ex-drug addicts. Exemplary cases will be drawn from various countries (Spain, Italy and Denmark). These sources will provide a diversity that ensures a representative collection of what is being done with respect to this matter in the European Union. The study will lead to the necessary conclusions that will enable us to perfect the Intervention Models applied by the entities participating in the project. In addition, a Charter of Recommendations

would be created which includes proposals to be included in policies applied by the public administration and private associations.

The proposal's results will be diffused through the creation of a WEB site. The charter of recommendations will be published in four languages and will be spread widely (via mail) to local administrations and social entities that provide services to the formerly chemically dependent. Two workshops will be held on subjects related to the project and public seminar will be held in Madrid during which the results will be presented.

Partners involved in the project:

CITY OF ODENSE, CULTURAL AND SOCIAL SECTOR

Contact name : Susanne Kvolsgaard
Garvergården Ll. Dansestrade 1.
DK 5000 Odense C.
Direct tel. : +45 66148814, local 4570
Fax : +45 661 46089
sla@odense.dk
public

CENTRO ITALIANA DI SOLIDARIETA' DI ROMA

Contact name : Juan Pares y Plans
Project coordinator : Domenico Arzu
Via Attilio Ambrosini 129
IT-00147 Roma
Tel : +39 6 541951
Fax : +39 6 5407304
Ceis@ceis.it
NGO

5.37. Transport & Travel Research Ltd TTR

Title of the project:

METHODOLOGY FOR ASSESSMENT OF TRANSPORT IMPACTS OF SOCIAL EXCLUSION (MATISSE)

Duration (*in month*): 6 Estimated total cost (in €): 224361,26 Granted amount:

Identification ref. (SAGA n°): 2001/E2/014/1189

Lead Organisation:

TRANSPORT & TRAVEL RESEARCH LTD TTR

30 High Street
OX20 1TG
Woodstock
United Kingdom
Tel: +44 1993 810780
Fax: +44 1993 810781
e-mail: ttr_oxford@compuserve.com
Website: www.ttr-ltd.com

Contact Name:

Mr David Blackledge

ttr@compuserve.com

Type/Legal Status of organisation:

Private Profit-Making Organisation

Member States involved:

United Kingdom, Italy, Germany

Priority area for cooperation: 1

Conducting and disseminating research making for a better understanding of social exclusion

Grounds of Social Exclusion to be addressed:

Target group:

Main objectives / Summary of the project:

The MATISSE project will promote participation of otherwise socially excluded groups in civil society, employment and cultural life, by improving access to means of mobility in cities and rural areas of Europe. This will be done by the development of a methodology to support the identification of those social groups

and geographical areas where policies to combat social exclusion are most needed, and where such policies might yield the most efficient results. The project will support the monitoring of social inclusion measures by publishing guidelines for the assessment of transport impacts on social exclusion, and will disseminate the results of its work among stakeholders and other researchers. Such dissemination will be done by means of the internet, news bulletins and a workshop targeted at policy actors in the field.

Partners involved in the project:

**RUPPRECHT CONSULT - FORSCHUNG
& BERATUNG GMBH**

Contact name : Mr Siegfried Rupprecht
Kemperbachstrasse 55
D-51069 Köln
Tel : +49 221 689 7254
Fax : +49 221 689 7255
s.rupprecht@rupprecht-consult.de
Private

MERSEYTRAVEL

Contact name : Murray Grant
Project coordinator : Neil Scales
24 Hatton Garden
UK-13 2AN Liverpool
Tel : +44 0151 227 5181 / 330 1303
Fax : +44 0151 236 2457 / 330 1094
CPO@mtrav.u-net.com
Local Government

**ISIS - ISTITUTO DI STUDI PER
L'INTEGRAZIONE DEI SISTEMI**

Contact name : Carlo Sessa
Via Flaminia, 21
IT-00196 Roma
Tel : +39 06 32 12 655/36 12 920
Fax : +39 06 32 13 049
Isisrome@isis-it.com
Private

5.38. ULF- Udviklingshæmmedes Landsforbund

Title of the project:

SOCIAL INCLUSION FOR EUROPEANS WITH LEARNING DISABILITIES - A COMMUNITY COMPACT (THE COMPACT PROJECT)

Duration (*in month*): 17 Estimated total cost (in €): 151970,37 Granted amount:

Identification ref. (SAGA n°): 2001/E2/014/1192

Lead Organisation:

ULF- UDVIKLINGSHÆMMEDES LANDSFORBUND

Koldingvej 19
DK-7100 Vejle
Tel: + 45 75724688
Fax: + 45 75468833
e-mail: ulf@ulf-web.dk
Website: www.ulf-ewb.dk

Contact Name:

Ms Gitte CHRISTENSEN

gitte@ulf-web.dk

Type/Legal Status of organisation:

Private Non-Profit Making
Organisation (NGO)

Member States involved:

Denmark, Spain, Portugal

Priority area for cooperation: 2

Action to help the most vulnerable

Grounds of Social Exclusion to be addressed:

Target group:

Main objectives / Summary of the project:

This project addresses the societal poverty, systemic loneliness and isolation experienced by many Europeans with learning disabilities. It aims at a comparative review in four countries, and 'premier' community workshops involving self advocates and local authority representatives to work in partnership on achievable solutions to promote their social inclusion. A European workshop will then develop a 'social skills and attitude' training and support package to be distributed widely among organisations of people with learning disabilities throughout Europe; a European Rountable will draft a 'model' national action

plan on social inclusion from the perspective of people with learning disabilities, in the spirit of mainstreaming, to raise awareness among organisations and policy makers at national and European level.

Partners involved in the project:

CONFEDERACIÓN ESPAÑOLA DE ORGANIZACIONES A FAVOR DE PERSONAS CON RETRASO MENTAL - FEAPS

Contact name : Maite Casado Serrate
General Perón nº 32, 1º
E-28020 Madrid
Tel : +34 91 556 74 13
Fax : +34 91 597 41 05
Maitecasado@arrakis.es
Feaps@arrakis.org
NGO

FUNDACIÓN LATEP-AFANIAS

Contact name : Cristina Maroto Centeno
C/ Las Pedroñeras 41 Bajo
E-28043 Madrid
Tel : +34 91 300 26 99
Fax : +34 91 388 28 58
Latep@sp-editores.es
NGO

FEDERAÇÃO NACIONAL DE COOPERATIVAS DE SOLIDARIEDADE SOCIAL (FENACERCI)

Contact name : Sandra Marques
Rua Augusto Macedo 2A
PT-1600-794 Lisboa
Tel : +351 217 112 580
Fax : +351 217 112 581
Fenacerci@fenacerci.pt
Smarques@fenacerci.pt
NGO

**VESTJÆLLANDS AMT
TIDSELBJERG**

Contact name : Hans Christian Hansen
Rosenkildevej 73
DK-4200 Slagelse
Tel : +45 58 50 30 78
Fax : +45 58 30 30 02
180hh@vestamt.dk
Public

ADEPE - ASSOCIAÇÃO PARA O DESENVOLVIMENTO DE PENICHE

Contact name : António José Ferreira de Sousa Correia Santos
Av. Porto de Pesca
PT-2520-208 Peniche
Tel : +351 262 787 959
Fax : +351 787 855
Adepe@mail.telepac.pt
NGO

**EESTI VAIMUPUUDEGA INIMESTE
TUGILIT (EVIT)**

Contact person : Kadri
Tatari 12
10116 Tallinn
Estonia
Tel : + 372 6 605067
Fax : + 372 6 455 171
Kadri@apollos.ttu.ee
NGO

5.39. Union Nationale Interfédérale des Organismes Privés Sanitaires et Sociaux - UNIOPSS

Title of the project:

PARTICIPATION ET PARTENARIAT AU SERVICE DE L'INSERTION ET DE LA CITOYENNETÉ

Duration (*in month*): 15 Estimated total cost (in €): 197778,61 Granted amount:

Identification ref. (SAGA n°): 2001/E2/014/1195

Lead Organisation:

UNION NATIONALE INTERFÉDÉRALE DES ORGANISMES PRIVÉS SANITAIRES ET SOCIAUX - UNIOPSS

133 rue Saint Maur

F-75011 Paris

Tel: +33- 1-53-36-35-00

Fax: +33-1-47-00-84-52

e-mail: jmblochlaine@uniopss.asso.fr

Website: None

Contact Name:

M. Michel BLOCH-LAINE

jmblochlaine@uniopss.asso.fr

Type/Legal Status of organisation:

Private Non-Profit Making
Organisation / NGO

Member States involved:

France, Italy, United Kingdom

Priority area for cooperation: 3

Promoting innovative approaches in policies for combating exclusion through the exchange of good practice

Grounds of Social Exclusion to be addressed:

Target group:

Main objectives / Summary of the project:

Using as a base a research project and the study of practice we would seek to draw up, evaluate and recommend participation-based tools and methods for people who are marginalised as well as partnership-based tools and methods for the promotion of dialogue between all the various actors involved in the implementation of strategies and policies combating exclusion and between these actors and the persons for whom the policies are devised. Using a bottom-up

approach the project will gather a wide range of field data from the three Member States concerned (France, Italy, and the UK), analyse them, organise them and forward them to the highest level both at national and European levels. The work, results and tools that this project will generate will be collated in a methodological guide for use by the representatives of the Community institutions and national and local authorities in the three participating Member States. It will also be accessible on the European Anti-Poverty Network's website.

Partners involved in the project:

CILAP EAPN ITALIA

Contact name : Letizia Cesarini Sforza

Via dei Mille, 6

IT- 00185 Roma

Tel : +39 06 44 70 22 99

Fax : +39 06 44 70 02 29

cilap@romacivica.net

lcsforza@tin.it

Non-Profit Making Organisation / NGO

LONDON VOLUNTARY SECTOR**TRAINING CONSORTIUM - LVSTC**

Contact name : Ray Phillips

The Print House

18, Ashwin Street

London

E8 3DL

United Kingdom

Tel : +44 20 7249 4441

Fax : +44 20 7983 4280

ray@lvstc.org.uk

Charitable voluntary organisation
(NGO)

5.40. The University of Birmingham

Title of the project:

MEASURING NEIGHBOURHOOD TRAJECTORIES IN UNDERSTANDING PROCESSES OF SOCIAL EXCLUSION

Duration (*in month*): 16 Estimated total cost (in €): 316780,23 Granted amount:

Identification ref. (SAGA n°): 2001/E2/014/1200

Lead Organisation:

THE UNIVERSITY OF BIRMINGHAM

Centre for Urban and Regional Studies,
JG Smith Building, Pritchatts Road
Edgbaston
B15 2TT
UK- Birmingham
Tel: +44 0121 414 3645
Fax: +44 0121 414 3279/4989
e-mail: p.w.lee@bham.ac.uk
Website: www.bham.ac.uk/curs

Contact Name:

Ms Jean Hammersley

j.hammersley@bham.ac.uk

Type/Legal Status of organisation:

Public body - University

Member States involved:

United Kingdom, Belgium, The Netherlands, Italy, Finland

Priority area for cooperation: 1

Conducting and disseminating research making for a better understanding of social exclusion

Grounds of Social Exclusion to be addressed:

Target group:

Main objectives / Summary of the project:

The overall objective would be to develop an approach to neighbourhood analysis of social exclusion that could be used to identify poor neighbourhoods with different trajectories and act as an early warning system for local policy makers. The partners have significant experience in working with local authorities and an important part of the dissemination activity would be to use existing networks in bridging the gap between academic research in this area and policy making at the local and regional level in each country.

The project has several objectives:

1. Draw together existing area measures of social exclusion at different spatial scales
2. Review existing attempts to measure neighbourhood trajectories
3. Help policy makers differentiate between different types of 'socially excluded' neighbourhoods
4. Reconcile theories of poverty relating to area measurement of deprivation with theories of integration in debates on social exclusion.

Partners involved in the project:

**HOUSING DEPARTMENT
BIRMINGHAM CITY COUNCIL**
 Contact name : John Downie
 Housing strategy & standards division
 Housing Dept
 Louisa Ryland House
 44 Newhall Street
 Birmingham B3 3PL
 United Kingdom
 Tel (+44) 121 303 6136
 Fax (+44) 121 303 6142
John.downie@birmingham.gov.uk
 Public authority

**WEST MIDLANDS LOCAL GOVERNMENT
ASSOCIATION**
 Contact name : Emma Kiteley
 Lombard House, 4th Floor
 145 Great Charles Street
 Queensway
 Birmingham B3 3LS
 United Kingdom
 Tel (+44) 121 678 1010
 Fax (+44) 121 678 1049
Email@wmlga.gov.uk
www.wmlga.gov.uk
 Public, Regional authority

**REGIONAL RESEARCH INSTITUTE,
SCHOOL OF HUMANITIES AND SOCIAL
SCIENCES
UNIVERSITY OF WOLVERHAMPTON**
 Contact name : Dr Martin Roche
 Wolverhampton Science Park
 Glaisher Drive
 Wolverhampton WV10 9RU
 United Kingdom
 Tel (+44) 1902 824103
 Fax (+44) 1902 824005
m.j.roche@wlv.ac.uk
 Public, Higher Education/Research
 Institute

**DIPARTIMENTO DI SOCIOLOGIA E
RICERCA SOCIALE
UNIVERSITA' DEGLI STUDI DI MILANO-
BICOCCA**
 Contact name : Prof.Francesca Zajczyk
 Via Bicocca degli Arcimboldi, 8
 I - 20126 MILANO
francesca.zajczyk@unimib.it
 Tel. (+39) 02 6448 7531
 Fax (+39) 02 6448 7561
 University

**KATHOLIEKE UNIVERSITEIT LEUVEN,
INSTITUUT VOOR SOCIALE EN
ECONOMISCHE GEOGRAFIE,**
 Contact name : Prof. Dr. Christian
 Kesteloot
 W. de Croylaan 42
 B-3001 Heverlee
 Tel. (+32) 16 322 432
 Fax (+32) 16 322 980
chris.kesteloot@geo.kuleuven.ac.be
 University

COMMUNE DE SCHAARBEEK
 Echevinat de l'intégration sociale,
 Prévention et solidarité
 Contact name : Mrs. Tamimount Essaidi
 Avenue Voltaire, 163
 B-1030 Bruxelles
 Tel. (+32) 2 216 91 73
 Fax. (+32) 2 245 02 61
tamimount_essaidi@hotmail.com
 Local authority

CDIE - CENTRO DI INIZIATIVA EUROPEA

Contact name : Anna Catasta
Via Carlo Poerio 39
I- 20129 Milano
Tel. (+39) 02 2052 4711
Fax (+39) 02 2052 4733
cdie@planet.it
Non-Profit making Organisation

**AME AMSTERDAM STUDY CENTRE FOR
THE METROPOLITAN ENVIRONMENT,
UNIVERSITY OF AMSTERDAM**

Department of Geography and Planning
Contact name : Dr. Wim Ostendorf
Project coordinator : Prof. Sako Musterd
Nieuwe Prinsengracht 130,
NL-1018 VZ Amsterdam
Tel (+31) 20 525 5022
Fax (+31) 20 525 5822
s.musterd@frw.uva.nl
Public body, University

MUNICIPALITY OF AMSTERDAM

Department of Research and Statistics
Contact name : Drs Jeroen Slot
Project coordinator : Drs. Joanna van
Antwerpen
Weesperstraat 79
NL-1018 VN Amsterdam
Tel : +31 20 527 9 527
Fax : +31 20 527 9 595
j.antwerpen@ontstat.amsterdam.nl
J.slot@ontstat.amsterdam.nl
Public, Local authority

**STAKES - NATIONAL RESEARCH AND
DEVELOPMENT CENTRE FOR WELFARE
AND HEALTH**

Contact name : Matti Kortteinen
Siltasaarenkatu 18
PO Box 220
FIN-00531 Helsinki
Tel : +358 9 39 671
Fax : +358 9 396 72 007
Matti.kortteinen@stakes.fi
Public

**CITY OF HELSINKI URBAN FACTS
URBAN RESEARCH DEPARTMENT**

Contact name : Dr. Mari Vaattovaara,
Senior Researcher
P.O.Box 5530
FIN-00099 Helsinki
Tel (+358) 9 1693605
Fax (+358) 9 1693612
Mari.vaattovaara@hel.fi
Public, Local authority

5.41. Vlaams Forum Armoedebestrijding

Title of the project:

INDICATEURS DE PAUVRETÉ PAR LE CROISEMENT DES SAVOIRS À PARTIR DES PERSONNES VIVANT EN PAUVRETÉ

Duration (*in month*): 18 Estimated total cost (in €): 246121,2 Granted amount:

Identification ref. (SAGA n°): 2001/E2/014/1205

Lead Organisation:

VLAAMS FORUM ARMOEDEBESTRIJDING

Sint-Amandusstraat 3
B-2060 Antwerpen
Tel: + 32 3 203 08 42
Fax: + 32 3 226 15 35
e-mail: V.F.A.@skynet.be
Website: None

Contact Name:

Mr Ludo HOREMANS

ludo.horemans@antwerpen.be

Type/Legal Status of organisation:

Non-profit making organisation
- NGO

Member States involved:

Belgium, France, Italy, Portugal, The Netherlands

Priority area for cooperation: 1

Conducting and disseminating research for a better understanding of social exclusion

Grounds of Social Exclusion to be addressed:

Target group:

Main objectives / Summary of the project:

The aim of the project is to launch a process whereby different types of knowledge on poverty and social exclusion can be brought together from:

- Different angles of approach within our society;
- Defined objectives giving rise to new indicators and/or fine-tuned indicators that can better express and measure falling levels of poverty;
- A comparison of different indicators in order to arrive at a range that is balanced and based on a comprehensive view of poverty and the effort to combat it;

- A (small-scale) public debate bringing together persons who live in poverty (extreme cases), people from the world of science, local government and the institutions plus the social partners. The debate will cover the acceptance and recognition by society of the full range of new indicators (or of renewed indicators); at certain times the small-scale debate could be extended to include discussion partners from outside the project team.

The final objective will be to place this new method for bringing together knowledge (research/action/training) in relation to existing research and current policy on combating poverty and social exclusion in each participating Member State and to exchange, using seminars and task forces, the experience and results obtained so that a full and balanced set of indicators can be established. The results will be disseminated via the EAPN European Network.

Partners involved in the project:

FOUNDATION LKU

Contact name : Jo Bothmer

P.O.Box 9545

NL-3506 GM Utrecht

Tel : +31.30.26.222.33

Fax : +31.30.26.22.065

iku.scholing@wanadoo.nl

NGO

MISSION RÉGIONALE D'INFORMATION SUR L'EXCLUSION RHÔNE-ALPES (MRIE)

Contact name : Patrice SAUVAGE

18bis rue d'Enghien

F-69002 Lyon

Tel : +33 - 4 72 77 50 15

Fax : +33 - 4 72 77 50 14

mrie.ra@wanadoo.fr

NGO

CILAP EAPN ITALIA

Contact name : Letizia Cesarini Sforza

Project coordinator : Massimo Crucioli

Via dei Mille, 6

IT-00185 Rome

Tel : +39 06 44 70 22 99

Fax : +39 06 44 70 02 29

cilap@romacivica.net

Non-profit making organisation - NGO

REDE EUROPEIA ANTI-POBREZA / PORTUGAL

Contact name : Agostinho Cesário Jardim Moreira

Project coordinator : Sérgio Aires

Rua de Costa Cabral, 2368

PT- 4200-218 Porto

Tel : +351.22.5403267

Fax : +351.22.5403250

eapnp@mail.telepac.pt

NGO

5.42. Verein Niedersächsischer Bildungsinitiativen e.V.

Title of the project:

SOLICOM III : e@SI - EUROPEAN ACTION FOR SOCIAL INCLUSION

Duration (*in month*): 18 Estimated total cost (in €): 183552,95 Granted amount:

Identification ref. (SAGA n°): 2001/E2/014/1206

Lead Organisation:

VEREIN NIEDERSÄCHSISCHER BILDUNGSINITIATIVEN E.V.

Bahnhofstrasse 16

D-49406 Barnstorf

Tel: +49(0)5442-991027

Fax: +49(0)5442-22 41

e-mail: barnstorf@vnb.de

Website: www.vnb-barnstorf.de

Contact Name:

Mr Reinhold BÖMER

boemer@vnb.de

Type/Legal Status of organisation:

Non-profit making organisation
- NGO

Member States involved:

Germany, Italy, Denmark, United Kingdom, France

Priority area for cooperation: 3

Promoting innovative approaches in policies for combating exclusion through the exchange of good practice

Grounds of Social Exclusion to be addressed:

Target group:

Main objectives / Summary of the project:

This project - the Solicom III - e@si Projekt, will develop an online data base on its own Internet website in which European projects and activities aimed at combating social exclusion in Europe will be introduced and broadcast via the Internet. At an earlier stage interviews with all projects will be carried out in order to obtain a comparable synopsis of European activities aimed at combating social exclusion. The website will include search and comparison facilities as well as discussion forums. It will also be possible to assess projects by means of online voting and to introduce personal ideas for projects aimed at improving social

integration. All the web content will be in five languages. Finally, six projects will be selected and presented at a conference. The direct participation of persons affected by social exclusion will be a central theme for all activities under the project.

Partners involved in the project:

**C.L.P. – COMITÉ DE LIAISON POUR LA
PROMOTION DES MIGRANTS ET DES
PUBLICS EN DIFFICULTÉ D’INSERTION**

Contact name : Joseph Le Corre
Project coordinator : Jonathan Kaplan
35, rue Chanzy
F-75011 Paris
Tel : +33 (0)15-5252-200
Fax : +33 (0)15-5252-200
info@clp.asso.fr
Non-profit making national organisation

**COOPERATIVA SOCIALE PARSEC
A.R.L. ONLUS**

Contact name : Dr. Ingo Stöckel
Piazza O. Marucchi, 5
I-00162 Roma
Tel : +39 – 06 – 8620.99.91
Fax : +39 – 06 – 861.10.67
coop.parsec@tiscalinet.it
Private / non-governmental

**SCHOOL OF EDUCATIONAL STUDIES,
UNIVERSITY OF SURREY**

Contact name : Nicholas Walters
Guildford Institute of the University of
Surrey
Ward Street
Guildford, Surrey
GU1 4LH
United Kingdom
Tel : +44 1483 562142
Fax : +44 1483 451034
N.Walters@surrey.ac.uk
University

UVI2

Contact name : Karen Bjerg Petersen
Vester Søgårdsvej 15
8230 Åbyhøj
Denmark
Tel : +45 87460346
Fax : +45 87460323
uvi2@uvi2.dk
Private

5.43. European Association of Service Providers for Persons with Disabilities

Title of the project:

COMBATING AGAINST DISCRIMINATION TOWARDS COMMUNITY BASED SETTINGS FOR PERSONS WITH DISABILITIES: "TOLERANCE OR ACCEPTANCE?"

Duration (*in month*): 18 Estimated total cost (in €): 262677,82 Granted amount:

Identification ref. (SAGA n°): 2001/E2/014/1215

Lead Organisation:

EUROPEAN ASSOCIATION OF SERVICE PROVIDERS FOR PERSONS WITH DISABILITIES

Avenue d'Auderghem 63
B-1040 Brussels
Tel: +32/2. 282 46 10
Fax: +32/2. 531 01 20
e-mail: katrijn.easpd@skynet.be
Website: www.easpd.org

Contact Name:

Mr Luk ZELDERLOO

eamsp@skynet.be

Type/Legal Status of organisation:

Private Non-Profit Making Organisation (NGO)

Member States involved:

Belgium, Austria, Finland, Ireland

Priority area for cooperation: 2

Action to help the most vulnerable

Grounds of Social Exclusion to be addressed:

Target group:

Main objectives / Summary of the project:

In several European countries, service providers for individuals with disabilities seem to have serious difficulties establishing community based services, because residents don't want to live next door to people with learning disabilities, mental health problems, etc... This results in people with intellectual and physical disabilities which find themselves discriminated against.

With the project « Tolerance or Acceptance », the EASPD is interested in the degree to which persons with disabilities, service providers and authorities all together can combat discrimination in European community based settings.

Since the tendency in the social sector has become to split up wide groups of the elderly, disabled, migrants, ... into smaller units, we cannot ignore the implications of change for everyone involved. We welcome of course all positive outcomes, but will combat any negative effects.

Our findings at the end could be applied to the other minority groups.

Concrete outputs and methods of diffusion envisaged are a Book, website, good practice report, conference, advisory letter and an evaluation report.

Partners involved in the project:

INSTITUT FÜR SOZIALDIENSTE

Contact name : Angelika Würbel

Römerstrasse 35

AT-6900 Bregenz

Tel : +43 5574 42890-0

Fax : +43 5574 42890-22

Wuerbel.angelika@ifs.at

Non-profit making organisation

CHANCE B - SOZIALBETRIEBS GMBH

Contact name : Mag. Regina Senarclens de Grancy

Project coordinator : Monika Wölkhart

Franz Josef Strasse 5

AT-8200 Gleisdorf

Tel : +43 3112 4911-85

Fax : +43 3112 4911-83

Regina.grancy@chanceb.at

NGO

KATHOLIEK UNIVERSITEIT LEUVEN

Dept of Orthopedagogics

Contact name : Prof. Dr. Bea Maes

Vesaliusstraat 2

B-3000 Leuven

Tel : +32 16 326224

Fax : +32 16 325933

Bea.maes@ped.kuleuven.ac.be

University

VLAAMS WELZIJNSVERBOND

Contact name : Mr Frank Cuyt

Guimard 1

B-1040 Bruxelles

Tel : +32 2 5114470

Fax : +32 2 5138514

Frank.cuyt@vlaamswelzijnsverbond.be

Private umbrella-organisation

FDUV R.F. - FÖRBUNDET DE

UTVECKLINGSSTÖRDAS VÄL R.F.

Contact name : Mikael Lindholm

Project coordinator : Maarit Aalto

Tölögatan 27 A 15

FIN-00260 Helsinki

Tel : +358 9 407070

Fax : +358 9 407748

Maarit.aalto@fduv.fi

NGO

NATIONAL FEDERATION OF VOLUNTARY BODIES PROVIDING SERVICES TO PEOPLE WITH INTELLECTUAL DISABILITY

Contact name : Brian O'Donnell

Oranmore Business Park

Oranmore, Galway

Ireland

Tel : +353 91 792 316

Fax : +353 91 792 317

Fedvol@indigo.ie

NGO

VERENIGING GEHANDICAPTENZORG NEDERLAND

Contact name : Mineke Hardeman

P/a Cuneraweg 340

NL-3911 RV Rhenen

Tel : +31 318 5102 521

Fax : +31 318 5203 29

m.hardemanrhenen@planet.nl

Private / Umbrella organisation

ASOCIACIÓN PAZ Y BIEN

Contact name : Francisco Molina

Cortegana

Project coordinator : Josefa Romero

Jiménez

Ronda de Capuchinos 4-6

E-41003 Sevilla
Tel : +34 954 41 41 03
Fax : +34 954 41 43 35
Pazbien@interbook.net
NGO

FUNDACIÓN TUTELAR TAU
Contact name : Francisco Molina
Cortegana
Project coordinator : Rafael Pozo
Bascón
C/. Cuna 50 - Pasaje Sierpes
E-41004 Sevilla
Tel : +34 954 56 41 16
Fax : +34 954 500 109
Fundatau@interbook.net
Non-profit making foundation

ASSOCIATION FOR RESIDENTIAL CARE
Contact name : Jane Livingstone
ARC House
Marsden Street
Chesterfield, Derbyshire
S40 1JY
United Kingdom
Tel : +44 01246 55 50 43
Fax : +44 01246 55 50 45
Jane.livingstone@arcuk.org.uk
Charity

THE HOME FARM TRUST
Contact name : Phil Madrew
Merchants' House
Wapping Road
Bristol B51 9RW
United Kingdom
Tel : +44 011 79 24 30 50
Philm@hft.org.uk
Charity

TACT

Contact name : Bob Rhodes
6 St Mary's Street
Wallingford
Oxon OX10 0EL
United Kingdom
Tel : +44 01491 83 22 38 / 84 84 57
Fax : +44 01491 83 27 71
Rhodestact@aol.com
Voluntary Organisation

HAND IN HAND FOUNDATION

Contact name : Mr Ákos Pordán
PO Box 105
Lónyay str. 19
HUN-1458 Budapest
Tel : +36 1 215 5213
Fax : +36 1 217 8115

Kezenfogva@c3.hu

NGO

**MACEDONIAN SCIENTIFIC SOCIETY
FOR AUTISM**

Contact name : Assist. Dr. Vladimir
Trajkovski, Msc
Institute for Immunology and Human
genetics
Medical Faculty
PO Box 60
1109 Skopje 1000
Republic of Macedonia
Tel : +389 2 110 556
Fax : +389 2 110 558
Vladotra@freemail.com.mk
NGO - Research Institute

5.44. Fédération des Centres d'Insertion

Title of the project:

A LA RECHERCHE D'ACTIONS MOINS EXCLUANTES (R.A.M.E.)

Duration (*in month*): 12 Estimated total cost (in €): 251589,85 Granted amount:

Identification ref. (SAGA n°): 2001/E2/014/1217

Lead Organisation:

FÉDÉRATION DES CENTRES D'INSERTION

57 rue de Rivoli

F-59800 Lille

Tel: + 33.03.20.47.57.51

Fax: + 33.03.20.47.51.68

e-mail: fci.admin@wanadoo.fr

Website:

Contact Name:

Mr Samir AMOR TEBA

fci.admin@wanadoo.fr

Type/Legal Status of organisation:

Non-profit making organisation
(NGO)

Member States involved:

France, Spain, Italy

Priority area for cooperation: 2

Action to help the most vulnerable

Grounds of Social Exclusion to be addressed:

Target group:

Main objectives / Summary of the project:

This study (research and action) targets the exchange of experience and best practice (four international seminars) involving organisations active in the fields of training, social integration, occupational integration for young people aged between 16 and 25 and who are experiencing severe problems. The mechanisms whereby young people are excluded will be diagnosed using common law mechanisms. The project will include an analysis of training and integration measures on offer in the three countries. Research will be conducted on new integration training areas. Teamwork will concentrate on multidisciplinary aspects

of producing in common a strategy aimed at setting up new educational styles that cater for the public concerned. Two types of products are envisaged: a website offering potential for storing and disseminating the full range of results, the publication of a final report (on paper) that will show how urgent it is to revise the reference material for integration both as regards its design, its content and the processes associated with it.

Partners involved in the project:

COOPERATIVA OESSE – OFFICINA SOCIALE

Contact name : Francesco Calmarini
Project coordinator : Paolo Raciti
Viale di Trastevere, 209
IT-00153 Roma
Tel : +39.06.5803084
Fax : +39.06.58179842
oesse@oesse.org
Private non-profit making organisation

**AYUNTAMIENTO DE JEREZ.
DELEGACIÓN DE BIENESTAR SOCIAL.**

Contact name : Francisco Ramírez
Plaza de la Merced s/n
E-11404 Jerez de la Frontera
Tel : +34 956 35 94 61
Fax : +34 956 35 94 62
Proy.europeos@aytojerez.es
Public body

SINTESI COOPERATIVA SOCIALE A R.L.

Contact name : Antonietta Natale
Via Nazionale Sannitica, P.co dei Pini,
Centro Commerciale Fabbricato A/6
Centurano
IT-81100 Caserta
Tel : +39 823.341782 – 823.328708
Fax : +39 823.341782
copsintesi@tin.it
Private

5.45. Association for Innovative Cooperation in Europe - AICE

Title of the project:

OVERCOMING FRAGMENTATION - NEW FORMS OF PARTNERSHIP IN COMBATING AND PREVENTING SOCIAL EXCLUSION

Duration (*in month*): 15 Estimated total cost (in €): 299966,23 Granted amount:

Identification ref. (SAGA n°): 2001/E2/014/1230

Lead Organisation:

ASSOCIATION FOR INNOVATIVE COOPERATION IN EUROPE - AICE

51, rue de la Concorde
B-1050 Bruxelles
Tel: +32 2 508 30 66
Fax: +32 2 512 48 83
e-mail: Raymond.Georis@alice.be
Website: www.efc.be/alice

Contact Name:

Mr Raymond GEORIS
Raymond.Georis@alice.be

Type/Legal Status of organisation:

Non-profit making organisation
- European NGO

Member States involved:

Belgium, France, Germany, Finland

Priority area for cooperation: 3

Promoting innovative approaches in policies for combating exclusion through the exchange of good practice

Grounds of Social Exclusion to be addressed:

Target group:

Main objectives / Summary of the project:

The project aims at developing new holistic ways to fight against social exclusion by associating public administrations, non governmental organisations, associations and foundations. Each of them use a diversity of instruments for alleviating poverty, promoting employability and economic development and activating citizenship. Companies develop social initiatives searching new forms of corporate citizenship. But many of these activities suffer from a lack of continuity and co-ordination. The project aims at comparing and exchanging good

practice between urban and rural pioneer sites in four European countries (Belgium : Antwerp ; Finland : Ostrobothnia Region ; France : Lille ; Germany : Mannheim) where innovative forms of public-private partnership are being developed with the support of foundations working in close relationship with local authorities. The project combines three priorities and objectives:

- Establishing consistent forms of public-private partnership by developing new forms of interaction in the triangle: public administrations – non-governmental organisations, associations and foundations – companies.
- Strengthening at the local level active participation of the population by developing new forms of empowerment and active citizenship including young people and their families.
- Establishing interaction between local initiatives and the larger economic, social, cultural and political context at the local (urban and rural), regional, national and European level.

Partners involved in the project:

**ASSOCIATION RÉUSSIR : PLAN
LILLOIS POUR L'INSERTION ET
L'EMPLOI - PLIE**

Contact name : Ms Malika MONNIER
3, rue Jeanne Maillotte
F-59000 Lille
Tel : +33 03.20.14.85.50
Fax : +33 03.20.14.85.51
Association Loi 1901

FACE LILLE MÉTROPOLE

Contact name : Ayité CREPPY
24/24 Boulevard de Metz
F-59000 Lille
Tel : +33 03.20.50.52.84
Fax : +33 03.20.50.51.60
a.creppy@fondationface.org
Association membre du réseau de la
Fondation Agir contre l'exclusion.
Private organisation / Charity

KRISTINESTAD

Contact name : Harriet Lindelöf-Sahl
Postbox 13
FIN- 64 100 Kristinestad
Finland
Tel : +358 6 22 16264
Fax : +358 6 22 16241
harriet.lindelof-sahl@krs.fi
Public

STRATEN-GENERAAL

Contact name : Noortje Wiesbauer
Schildersstraat 17
B- 2000 Antwerpen
Tel + Fax : +32 3 216 44 74
noortje.wiesbauer@pandora.be
Non profit organisation

**CITY OF MANNHEIM – DEPARTMENT
III - YOUTH, SOCIAL AND HEALTH**

Contact name : Ms Ingrid Bodamer
K 1, 7-13
D-68159 Mannheim
Tel : +49-621-293 9335
Fax : +49-621-293 9703
ingrid.bodamer@mannheim.de
Public

5.46. The Quest Trust

Title of the project:

HERMES

Duration (*in month*): 14 Estimated total cost (in €): 188238,61 Granted amount:

Identification ref. (SAGA n°): 2001/E2/014/1238

Lead Organisation:

THE QUEST TRUST

1 Belmont
Lansdown Road
UK - BA1 5DZ Bath
Tel: +44 01225 466222
Fax: +44 01225 315904
e-mail: enquiries@questtrust.co.uk
Website: www.questtrust.co.uk

Contact Name:

Mr Buxton Simon

Simonbuxton@questtrust.co.uk

Type/Legal Status of organisation:

Private Non-Profit Making Organisation (NGO)

Member States involved:

United Kingdom, Ireland, Denmark, Germany, The Netherlands

Priority area for cooperation: 3

Promoting innovative approaches in policies for combating exclusion through the exchange of good practices

Grounds of Social Exclusion to be addressed:

Target group:

Main objectives / Summary of the project:

As a sequel to our EC funded project with AKB (Copenhagen) and Focus Ireland (Dublin), we want to explore ways in which community involvement strategies can help transient communities. Working additionally with the City of Alkmaar (Netherlands) and the Klaus Novy Institut (Cologne), we have identified socially excluded groups, in each of those cities and in London, willing to co-operate in testing a range of techniques involving mixed media, including face-to-face meetings, the written word, and a range of electronic forms of communication. Transnational workshops will be held at the beginning and end of the project and

a dedicated interactive website will sustain daily contacts throughout the project. The relative success of each form of communication will be evaluated by the Community Development Foundation.

Partners involved in the project:

FOCUS IRELAND

Contact name : Orla Barry
Project coordinator : David Burke
14a Eusrace Street
Dublin 2
Republic of Ireland
Tel : +353 1 671 2555
Fax : +353 1 679 6843
Info@focusireland.ie
Charity

MUNICIPALITY OF ALKMAAR

Contact name : B.J. Schuyt
Project coordinators : Overdie, De Mare,
J. Visser, R. van Menen
Mallegatsplein 1
Postbus 53
NL-1800 BC Alkmaar
Tel : +31 725488661
Fax : +31 725488777
Bschuyt@alkmaar.nl
Public

KLAUS NOVY INSTITUT E.V.

Contact name : Dr. Jürgen Bärsch
Project coordinator : Philip Potter
Annostr. 27-33
D-50678 Köln
Tel : +49 221 931 207 0
Fax : +49 221 931 207 20
Kni@kni.de
Charity (gemeinnütziger Verein)

**BOLIGSELSKABET AKB S.M.B.A.
(HOUSING ASSOCIATION)**

Contact name : Henning Andersen
Project coordinator : Kim Osterberg
Tomsgaardsvej 28
DK-2400 Kobenhavn NV
Tel : +45 38 33 27 03
Fax : +45 38 33 27 03
Akb@akb.dk
Non Profit social Housing Association