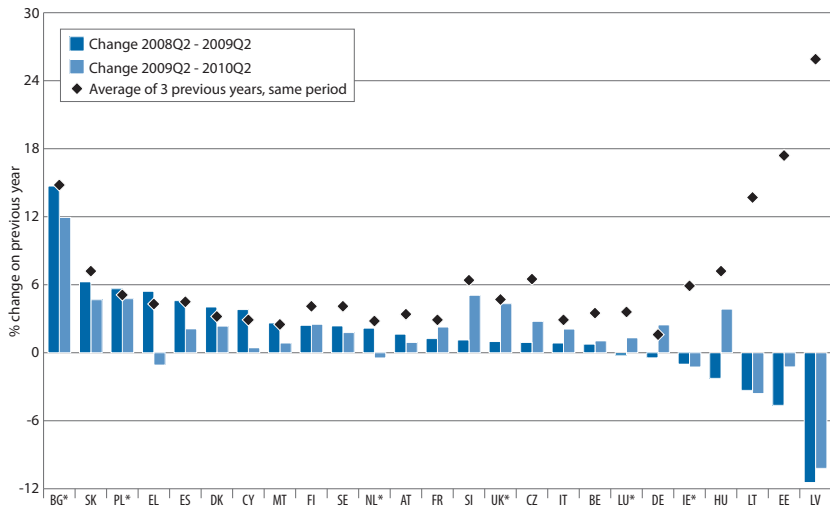


Chart 42: Year-on-year percentage changes in EU Member States in wages per employee 2008q2 - 2009q2 and 2009q2 - 2010q2 compared to the average over the preceding three years



Source: Eurostat, National Accounts, DG EMPL calculations. Data non-seasonally adjusted.

Note: * Data for BG, IE, LU, NL, PL and UK q1 instead of q2. Data for PT and RO not available.