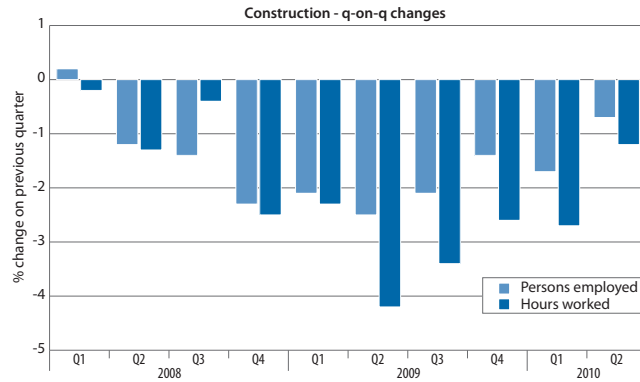
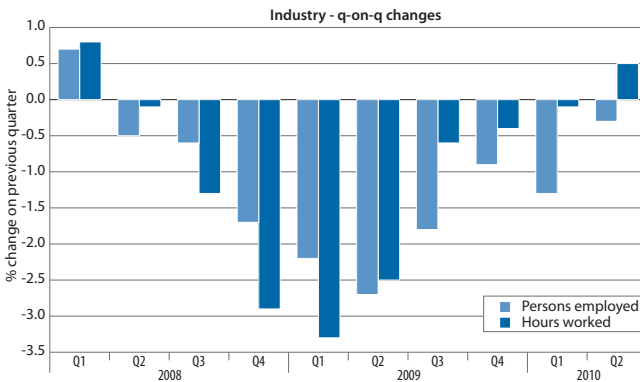
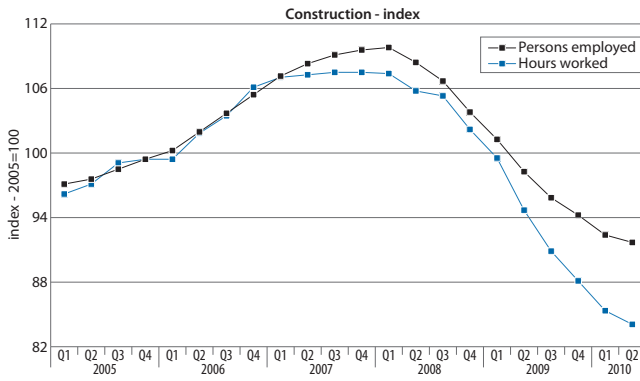
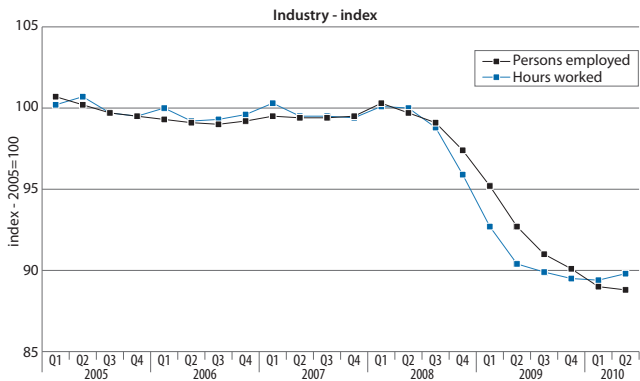


Chart 35: Employment and hours worked in industry and construction sectors in the EU, 2005-2010



Source: Eurostat, short term business statistics. Data seasonally adjusted.

Note: Industry: NACE rev2 B-D (Mining and quarrying & manufacturing & electricity, gas, steam and air conditioning supply), Construction: NACE rev2 F.