

Tim O' Donovan

Teagasc

Presentation Outline

Teagasc...very fast

Farmer needs/Focus Group Report

Role of advisory/extension services

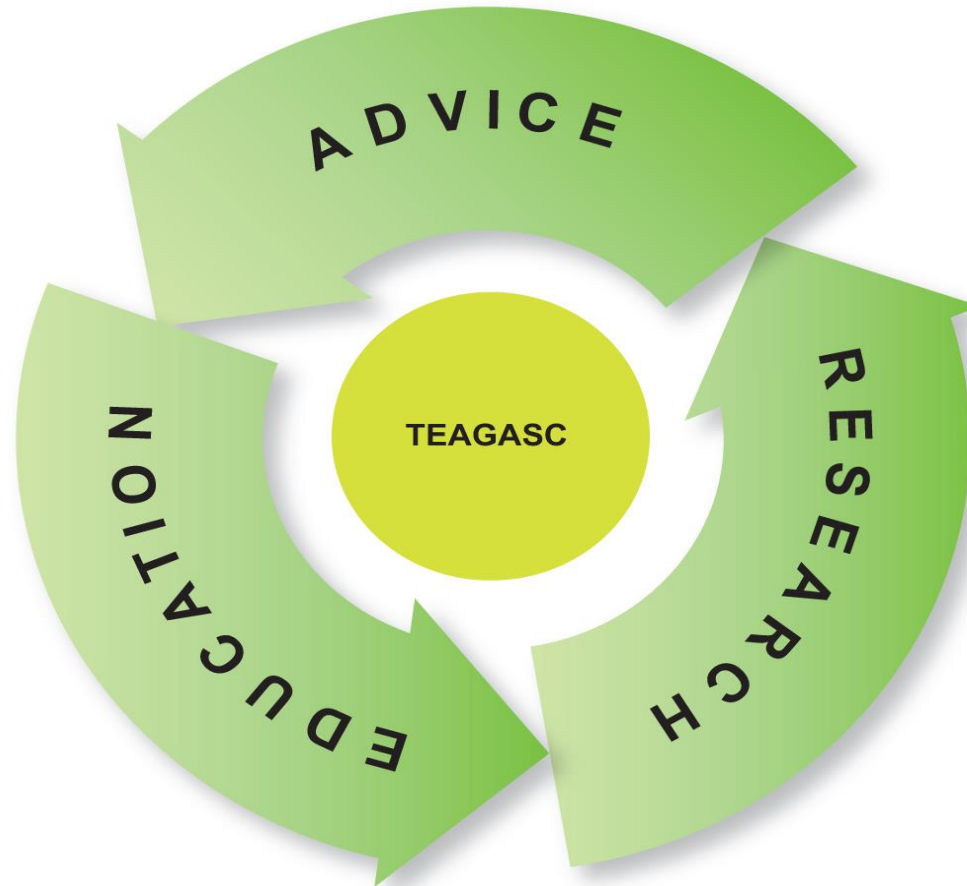
Advisory needs

Teagasc... very fast

Teagasc = 'Instruction'

1000 Staff

- Since 1988 but 'roots' in 1950's
- Research Centres
- Education Centres
- Advisory Centres
- State funded
- Advisory revenue
- Research projects
- www.teagasc.ie



What does a farmer need – my experience

Reliability of profits comprising of...

market, yield, usable technology & knowledge

Market Signals comprising of...

price, demand, customer relationships

Policy Signals

complimentary to above e.g. Greening, SUD

Farmer needs and Focus Group (FG) Report

Farmer needs

Reliable profits

- yields
- price
- policy

Support to innovate

- Depends on decision process
- Links to other innovators
- Peer to peer 'collisions'

FG Report

Financial Gap

Yield Gap

- Soybean/sunflower 30%
- Faba bean 76%
- Is possible

Lack of processing structure

Volumes will remain limited

What can advisors do?

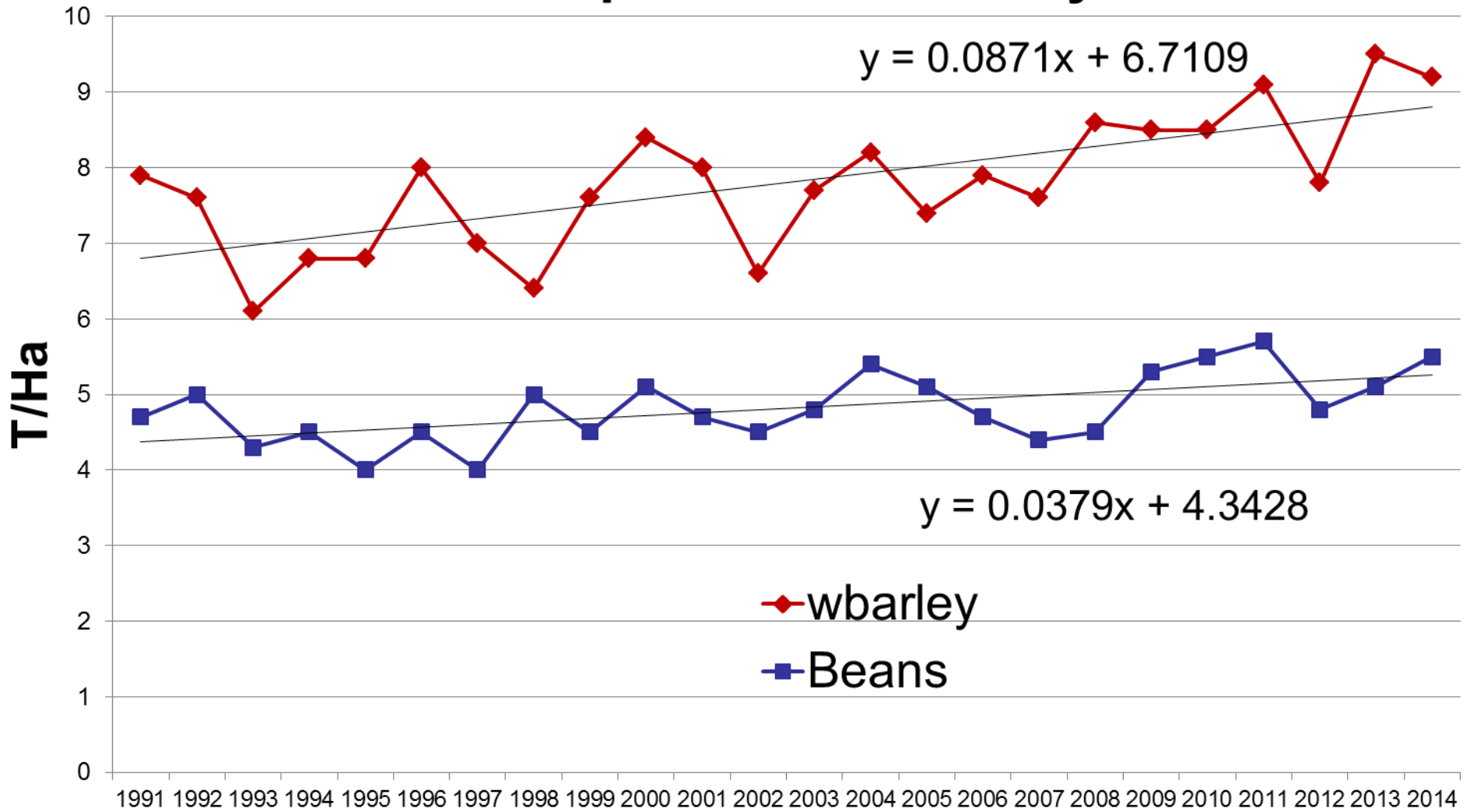
Advisors incl. state, private, industry etc.

Regional analysis of crops

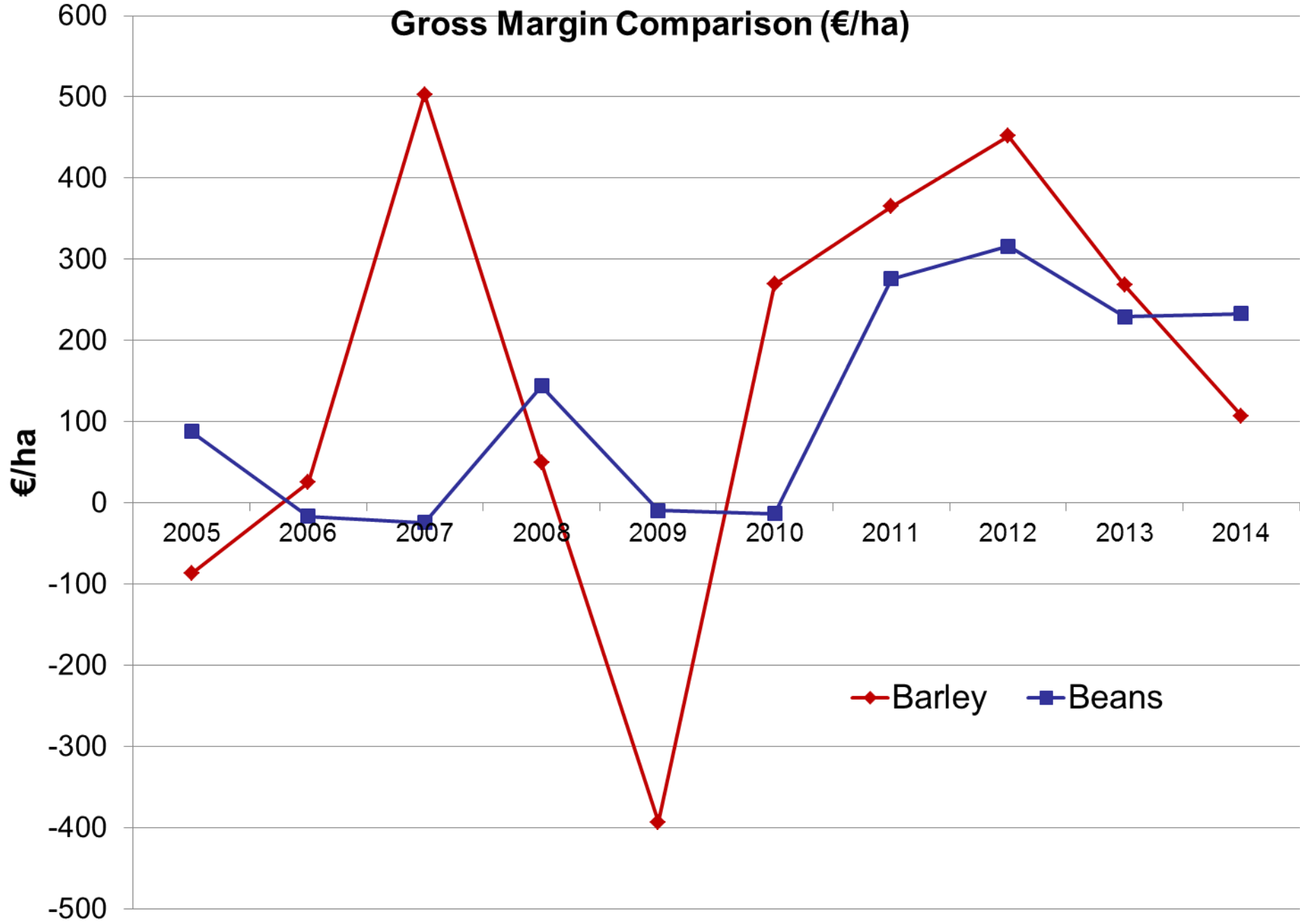
local knowledge is critical for local crops

Some ideas in Labarthe & Laurent, 2013

Yield of beans/peas v's W. barley in Ireland



Gross Margin Comparison (€/ha)



What can advisors do?

Regional analysis of crops

local knowledge is critical for local crops

Seek out knowledge to suit local crops

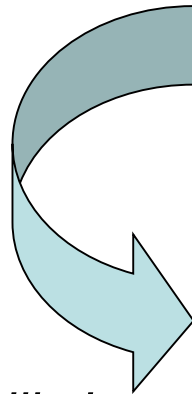
Act as broker between markets and growers

Support innovation process on local crops but in future on new crops

Brokering Research and Knowledge Transfer

See Klerkx & Leeuwis, 2008

Researchers



Advisers work with farmers to implement the new technology and feedback to research

Education gives skills but critical for 'first impressions' ❤️

What do advisors need?

Clear opportunities for farmers/clients/customers

- market, prices

Clear policy signals

- SUD, EFA, Greening

Knowledge supports

- If its not easy, it wont be done
- Who is 'pushing' project results?
- Is Google enough? No as time will not allow it!
- Protein Crop Repository needed (Annex 4 FG Report)

Links to other similar advisors

- Disparate actors need a Community of Practise (SCAR 2012)

Thank You