

eip-agri  
AGRICULTURE & INNOVATION

European Commission | European Network for Rural Development | eip-agri  
European Rural Networks' Assembly

**Subgroup on Innovation  
for agricultural productivity and sustainability**  
17<sup>th</sup> Meeting  
3 December 2020

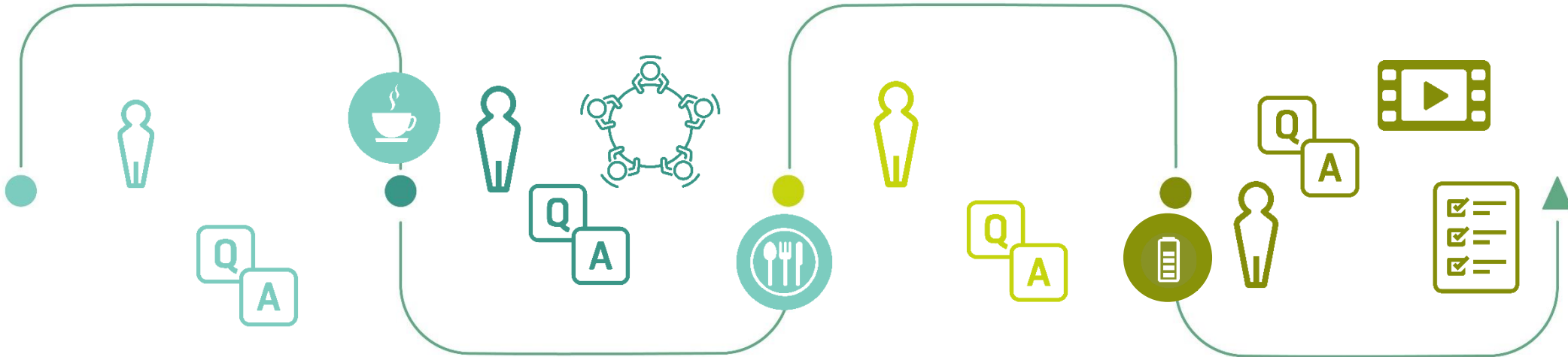
#RNSubInnovation - @EIPAGRI\_SP

## MORNING

## AFTERNOON

W  
E  
L  
C  
O  
M  
E

C  
L  
O  
S  
I  
N  
G



EIP-AGRI Service Point work programme

Ideas for the innovation strand national CAP network

Ideas for networking activities European CAP network

Achievements of EIP-AGRI network



## *PAN Europe's work on low impact farming*

**Henriette Christensen**  
PAN Europe

SUBGROUP ON INNOVATION  
for agricultural productivity and sustainability  
17<sup>th</sup> meeting  
*3 December 2020*



# PAN Europe's work on low impact farming



Henriette Christensen  
PAN Europe  
[www.pan-europe.info](http://www.pan-europe.info)

3 December 2020  
17th meeting of the Subgroup on Innovation



# Outline

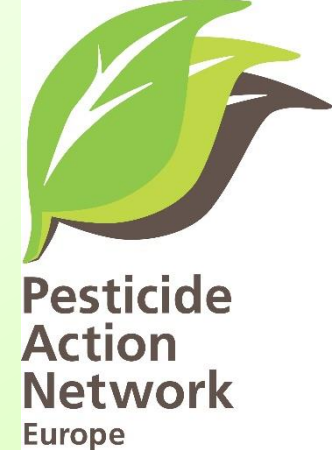
- Who is Pesticide Action Network Europe
- Low Impact Farming campaign
- Exchange on possible collaboration



47 testimonies

<https://www.low-impact-farming.info>

# Who is PAN Europe



- **Pesticide Action Network:** a network of 600 NGOs united 5 centers of PAN International
- **PAN Europe:** 42 not-for-profit members in 26 European countries, annual turnover 300.000 euro
- **Mission:** Working to replace use of hazardous pesticides with ecologically sound alternatives

# Integrated Pest Management lacking uptake across Europe

SUD: mandatory for farmers to apply Integrated Pest Management since 2014

CAP: FAS needs to be able to inform about alternative techniques since 2015

EIP focus groups on Ecological Focus Areas, non chemical herbicides

*..despite many good examples of research on, and promotion of, IPM by Member States, the assessment of the implementation of IPM continues to be the most widespread weakness in the application of the SUD.*

*Consequently, Member States have failed to exploit the significant potential for greater adoption of IPM, including the more widespread adoption of non-chemical pest control techniques.*

European Commission 2020

COM(2020) 204 final



●  
Agronomic practices

●  
Monitoring

●  
Physical control

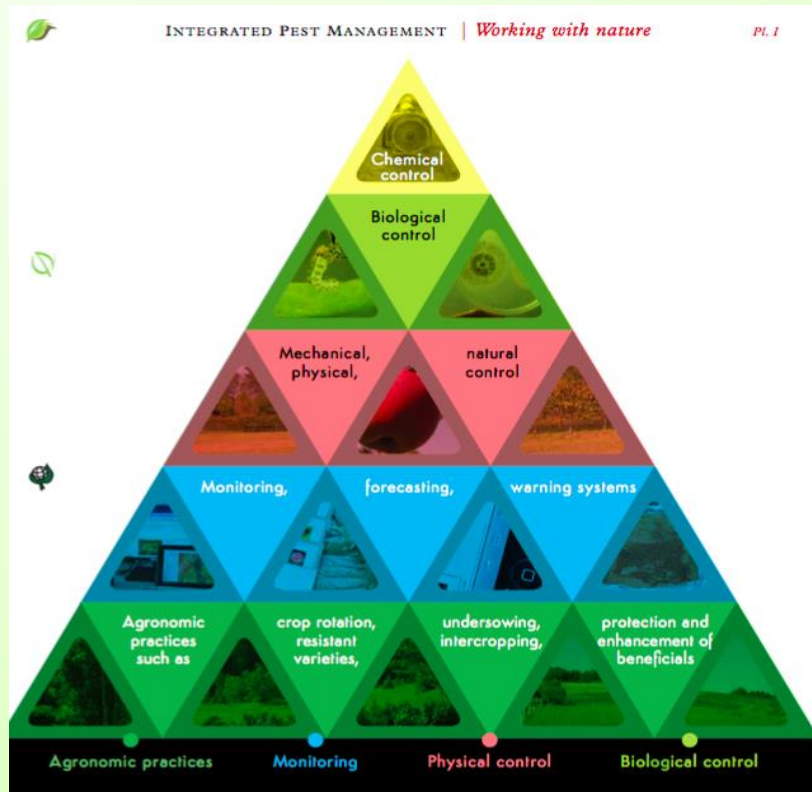
●  
Biological control

# PAN Europe working on alternatives with researchers and companies

**SUD symposium have illustrated that**

- it is not only possible to replace pesticide in fruit and vegetables
- It is also possible to replace pesticides in arable crops

## Alternatives to insecticides



## Alternatives to herbicides





# Pesticide use reductions is possible

50% pesticide reduction arable:



90% insecticide reduction in wheat:



100% reduction of insecticides and herbicides in grapes:



100% reduction is possible in rice:



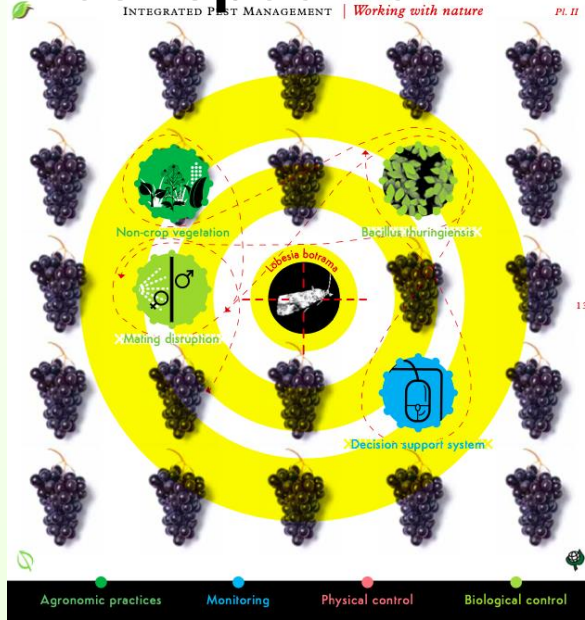


# Collaboration with EIP-AGRI



# Ex. IPM in grapes

## Pest specific



5<sup>TH</sup> SYMPOSIUM ON SUSTAINABLE USE OF PESTICIDES:  
UNLOCKING THE IPM TRIANGLE-USING GREEN TOOLS 1<sup>ST</sup>  
FOCUSING ON SUSTAINABLE GRAPE GROWING

7/02  
2017

S&D

WWW.SOCIALISTSANDDEMOCRATS.EU

WWW.IOBIC-WPES.ORG

WWW.IBMA-GLOBAL.ORG

WWW.PAN-EUROPE.INFO

WWW.PAN-EUROPE.INFO

IPM

Sectorial  
approach

IPM THE  
HOLISTIC  
VINE  
PYRAMID



PAN-EUROPE.INFO

ORGANIC MATTER

VINE  
STOCK QUALITY

PRUNING  
QUALITY PRUNING

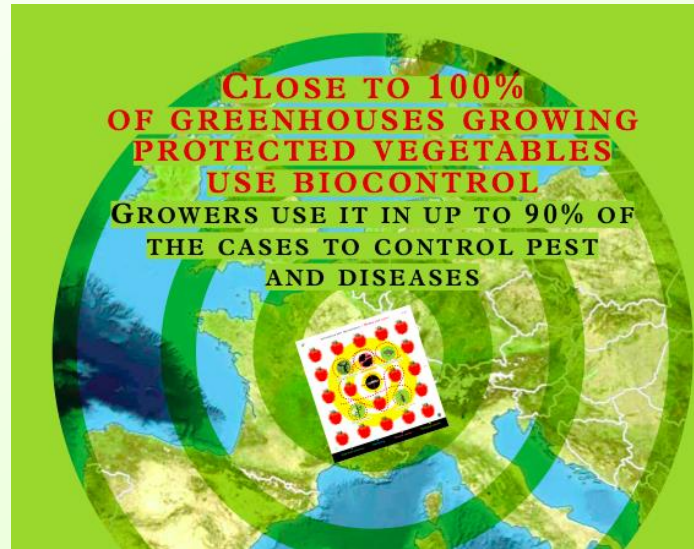
FAUNA  
DIVERSITY

FLORAL  
DIVERSITY

PERMANENT COVER



# Mapping best practices and scaling up



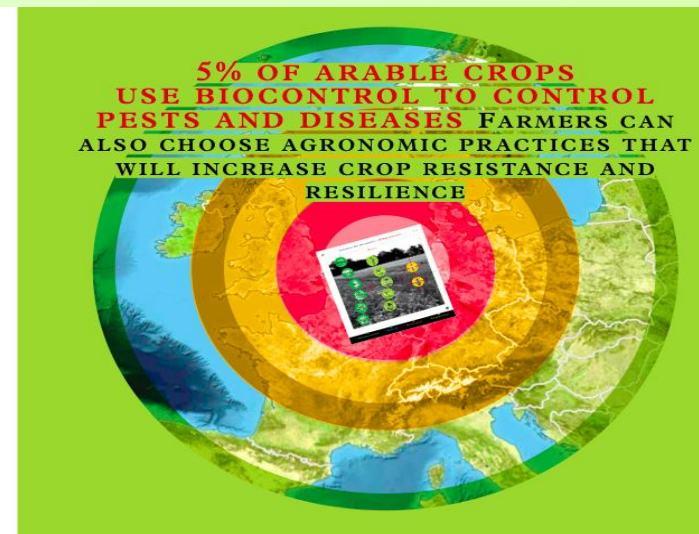
This can apply to all sectors, including arables: groups of farmers can adopt good practices to manage weeds and insects without pesticides thanks to independent advice from agronomists, and the collective aspect creates a synergy that make farmers willing to go further.

In Normandie, France, a group of arable farmers from the Dephy Phyto network reduced their pesticides use by 50% following the advice of Bertrand Omon, agricultural advisor from the regional Chamber of Agriculture.

**TO REDUCE YOUR USAGE, YOU NEED A CULTIVATION SYSTEM WHICH INVOLVES A NUMBER OF LINKED STEPS CARRIED OUT ONE AFTER THE OTHER. THIS INCLUDES FOR EXAMPLE ALTERNATING SPRING AND WINTER CROPS TO RESTRICT MOULD AND DISEASE AND USING VARIETIES WHICH ARE LESS SUSCEPTIBLE TO DISEASE... FOR WHEAT, I SOW DIFFERENT VARIETIES TOGETHER TO PREVENT THE ISSUES THAT ARISE WHEN YOU HAVE ONLY ONE SINGLE VARIETY!... I SOW MUCH LATER THAN USUAL TO PREVENT WEEDS FROM GROWING AT THEIR OPTIMUM TIMES.**  
 Antoine Lambert — Cereal-grower in Fours-en-Vexin, France

**"I ROTATE EVERY 9 YEARS BETWEEN 6 DIFFERENT CROPS. IT INVOLVES MECHANICAL WEEDING AND USING STAGGERED SOWING DATES TO PREVENT PROBLEMS WITH INSECTS AND DISEASES. IT ALSO INVOLVES MIXING WHEAT VARIETIES TO TRY TO POOL THE DISEASE RESISTANCES OF DIFFERENT VARIETIES AND MAKE USE OF ALL OF THEIR PROPERTIES."**  
 Jean-Bernard Lozier — Cereal and protein-crop grower in Coudres, France

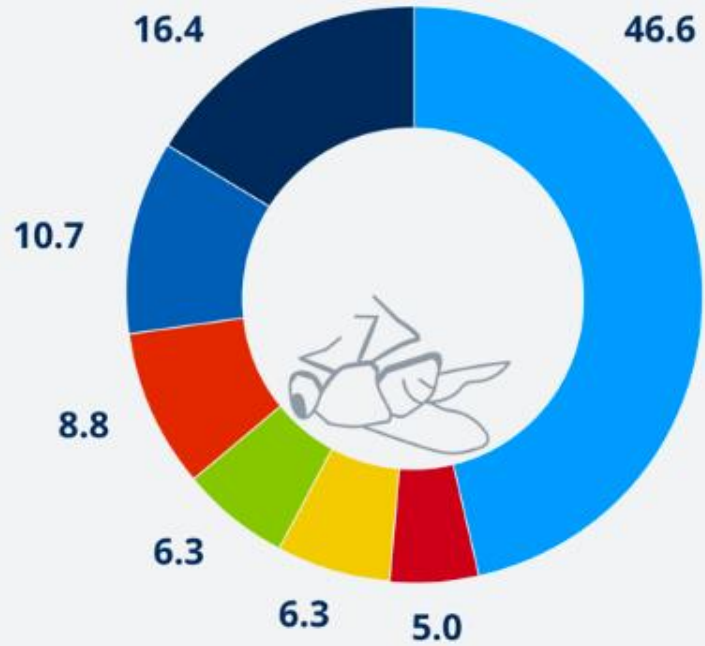
**"I REORGANISED MY PLOT STRUCTURE INTO PLOTS OF NO MORE THAN 12 HA, SEPARATED WITH STRIPS OF GRASS... FROM THE THIRD OR FOURTH YEAR, YOU START GETTING A LOT OF BEETLES IN THE GRASSY AREAS WHICH EAT THE SLUGS AROUND THE CROPS."**  
 Jean-Philippe Pétillon — Cereal-grower in Richeville, France





# Main drivers of insect decline

Infografik Insektensterben Ursachen EN



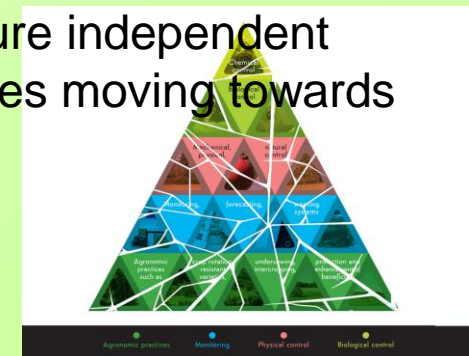
- Intensive agriculture with pesticides and fertilizer
- Biological factors, introduced species and pathogens
- Urbanization
- Deforestation
- Wetlands and river alteration
- Others
- Global warming

Source: Sanchez-Bayo & Wyckhuys, Biological Conservation, 2019

©DW

# PAN Europe's proposal for future reflections on the EIP-AGRI:

- Highlight (non-chemical) alternatives we already know (where no more research is needed)
- Focus on how to scale up (incl. CAPs potential) nature based solutions
- Discuss how to ensure independent farm advisory services moving towards pesticide free



**Thank you for your attention**  
**Contact: [henriette@pan-europe.info](mailto:henriette@pan-europe.info)**



Copyright: Sandrine Boulet