



EIP-AGRI Seminar 'Promoting creativity and learning through agricultural knowledge systems and interactive innovation'

3-4 December 2015
Dublin, Ireland

**All information of the workshop
available on www.eip-agri.eu
at the event webpage**

<http://ec.europa.eu/eip/agriculture/node/1336>

How can advice and knowledge be better organised to support farmers?

Dr Katrin Prager

Social Economic and Geographical Sciences



The James
Hutton
Institute

Presentation at the EIP seminar “Promoting creativity and learning through agricultural knowledge systems”, 3-4 Dec 2015, Ireland



Introduction

- **What sort of advice and knowledge do farmers need?**
Crop and animal health, production systems, farm buildings, business planning , bookkeeping, marketing, machinery and technology, regulations and payments...
- **Where does this information and knowledge reside?**
Universities, colleges, research stations, levy bodies, government agencies, independent consultants, machinery companies, input suppliers – and farmers themselves!



The James
Hutton
Institute

PRO AKIS project

- Inventory of AKIS in the EU: 27 national reports + searchable database (www.proakis.eu)
- Aimed to create an overview of advisory systems and AKIS, considering recent political attention and drastic institutional changes



Prospects for Farmers' Support : Advisory Services in European AKIS (PRO AKIS)

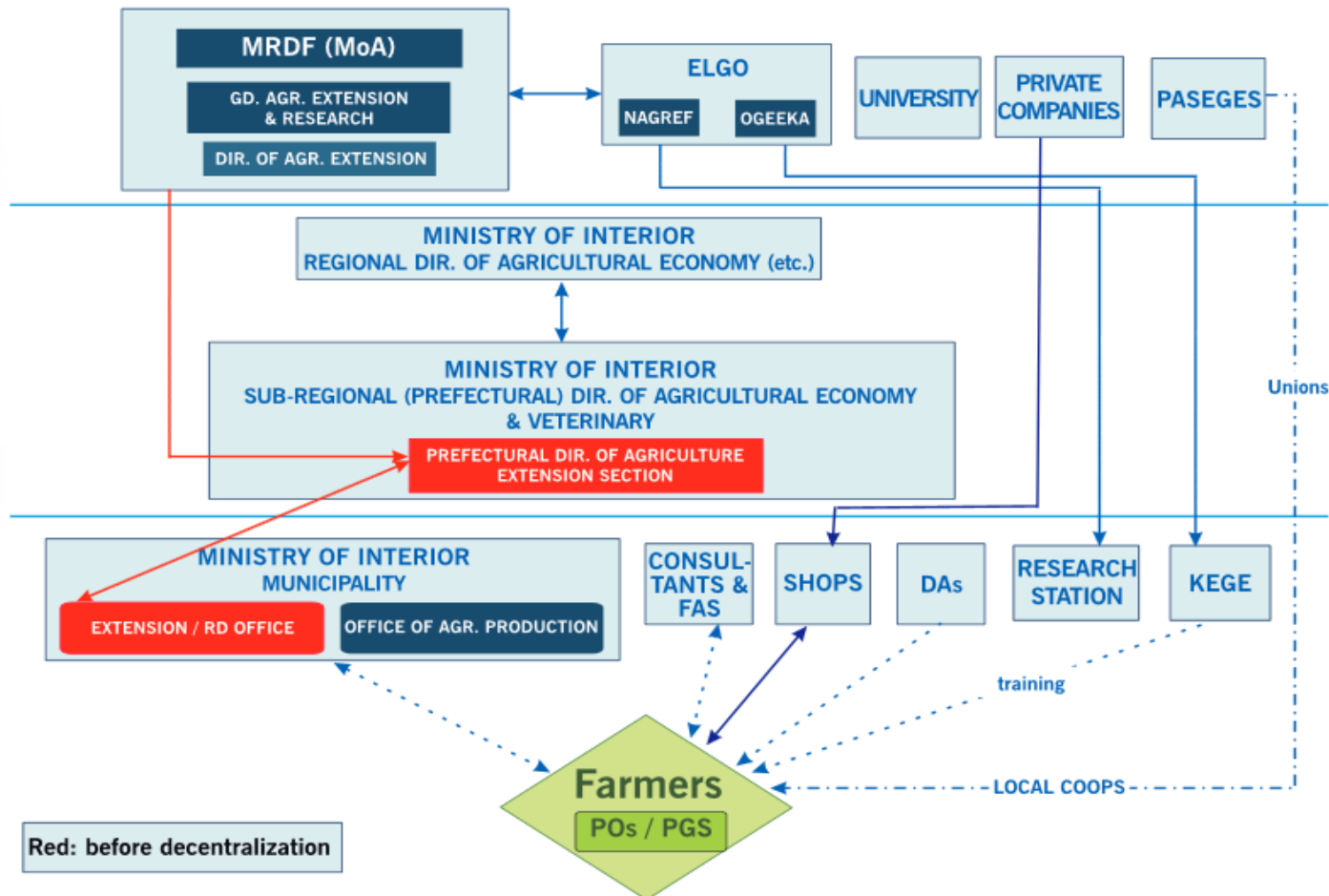
[About](#) [Inventory](#) [Partners](#) [Publications and events](#) [Contact](#) [Login](#)



Examples of AKIS

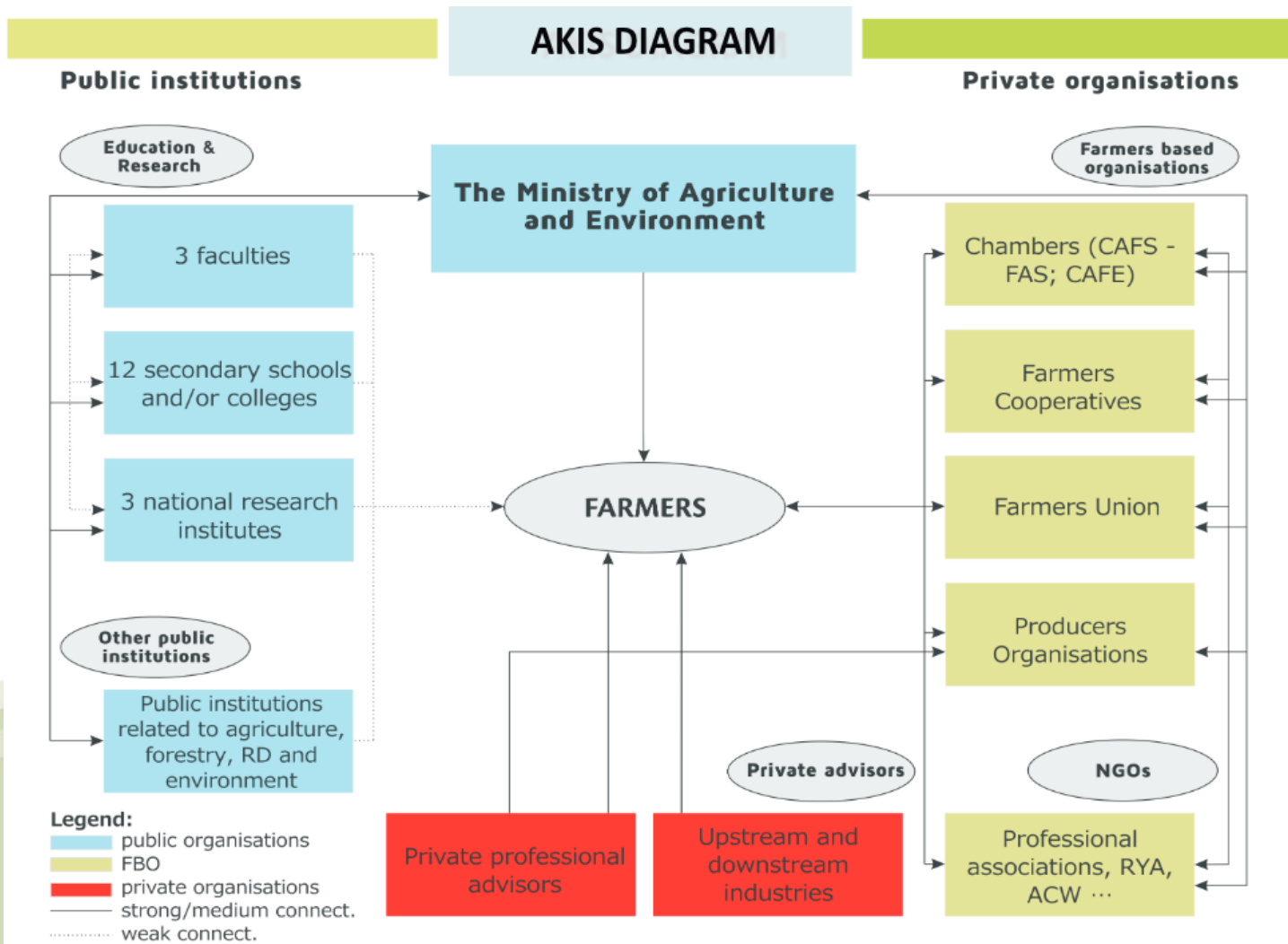
- Greece

AKIS DIAGRAM



Examples of AKIS

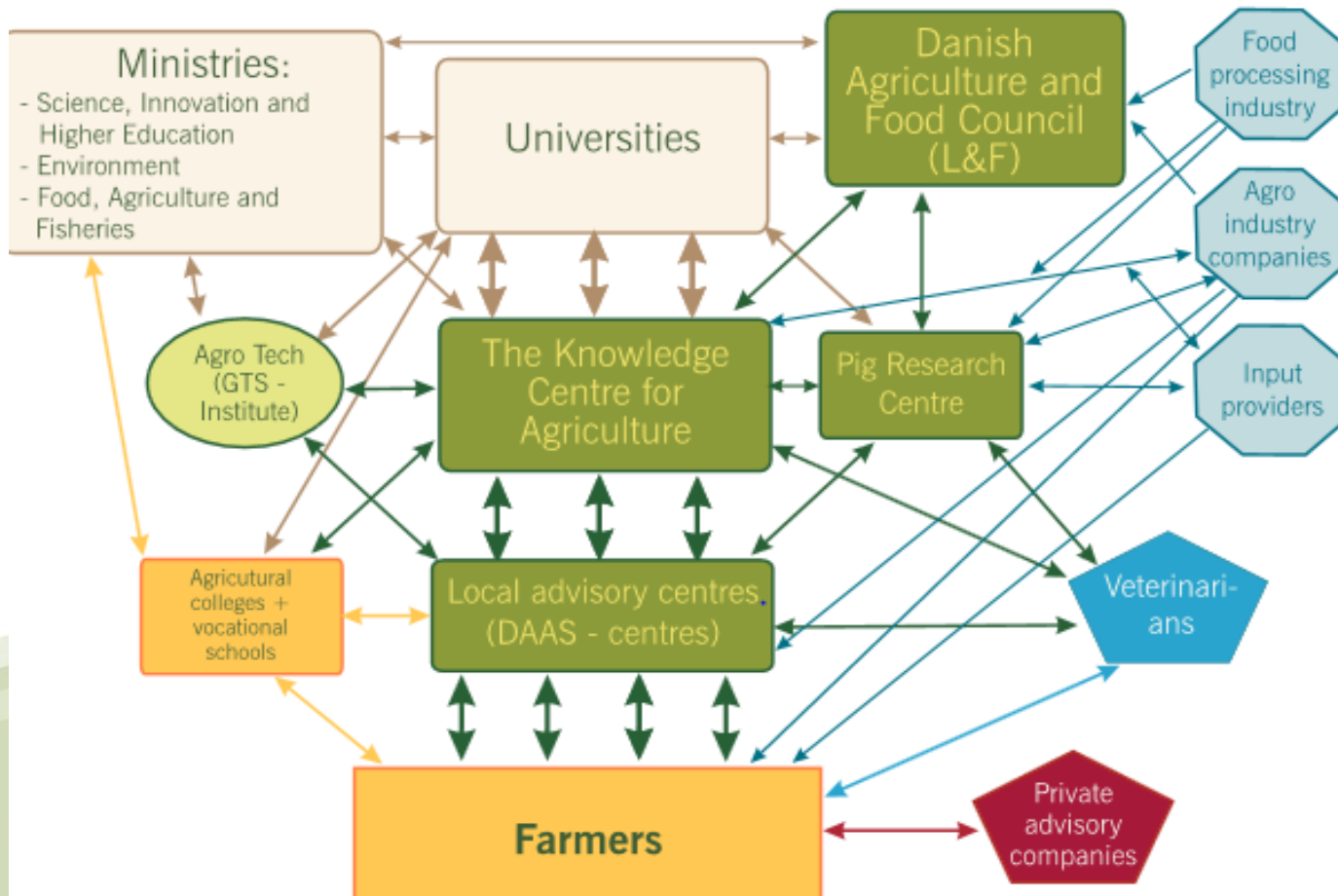
● Slovenia



Examples of AKIS

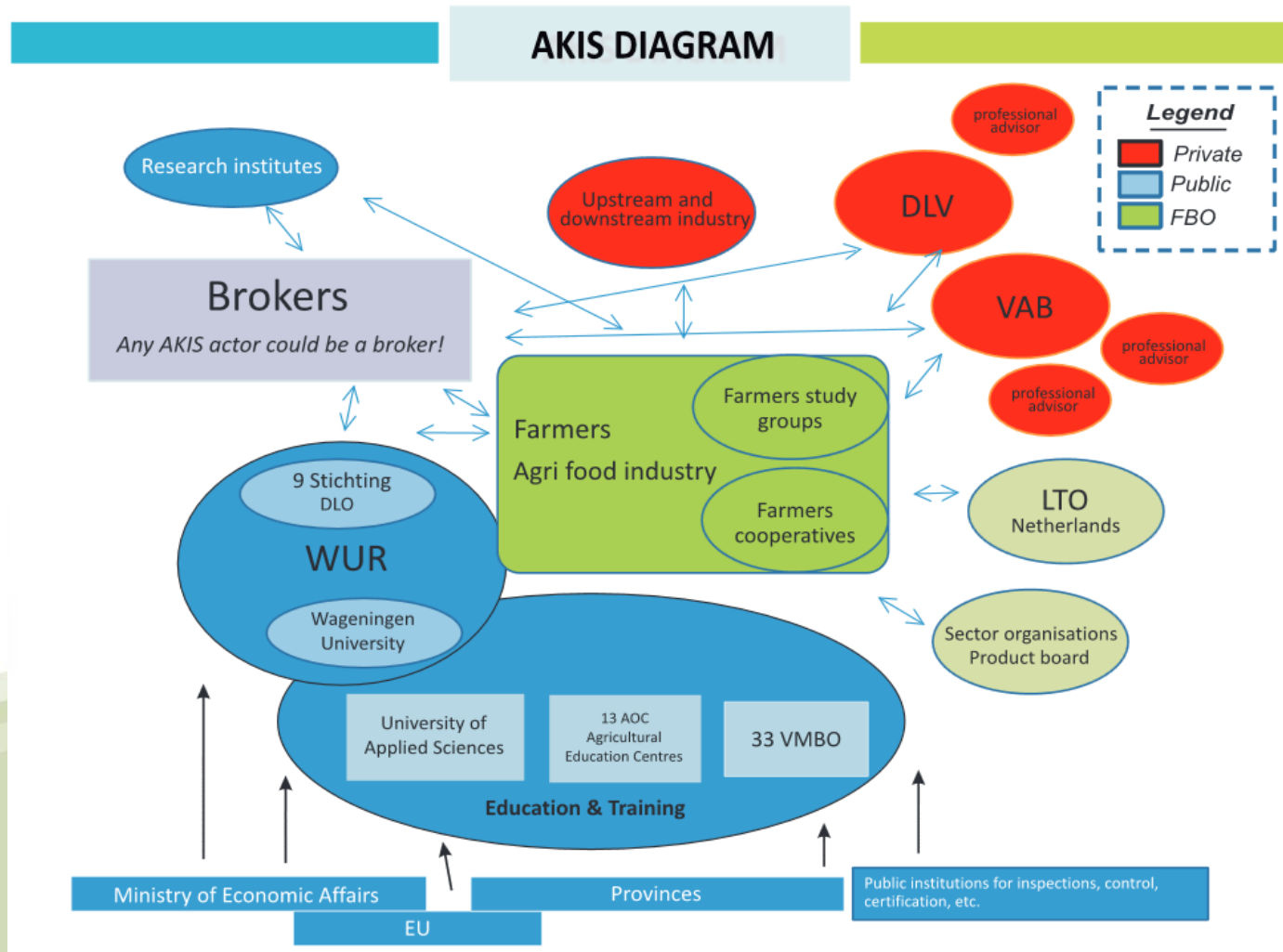
- Denmark

AKIS DIAGRAM



Examples of AKIS

- Netherlands





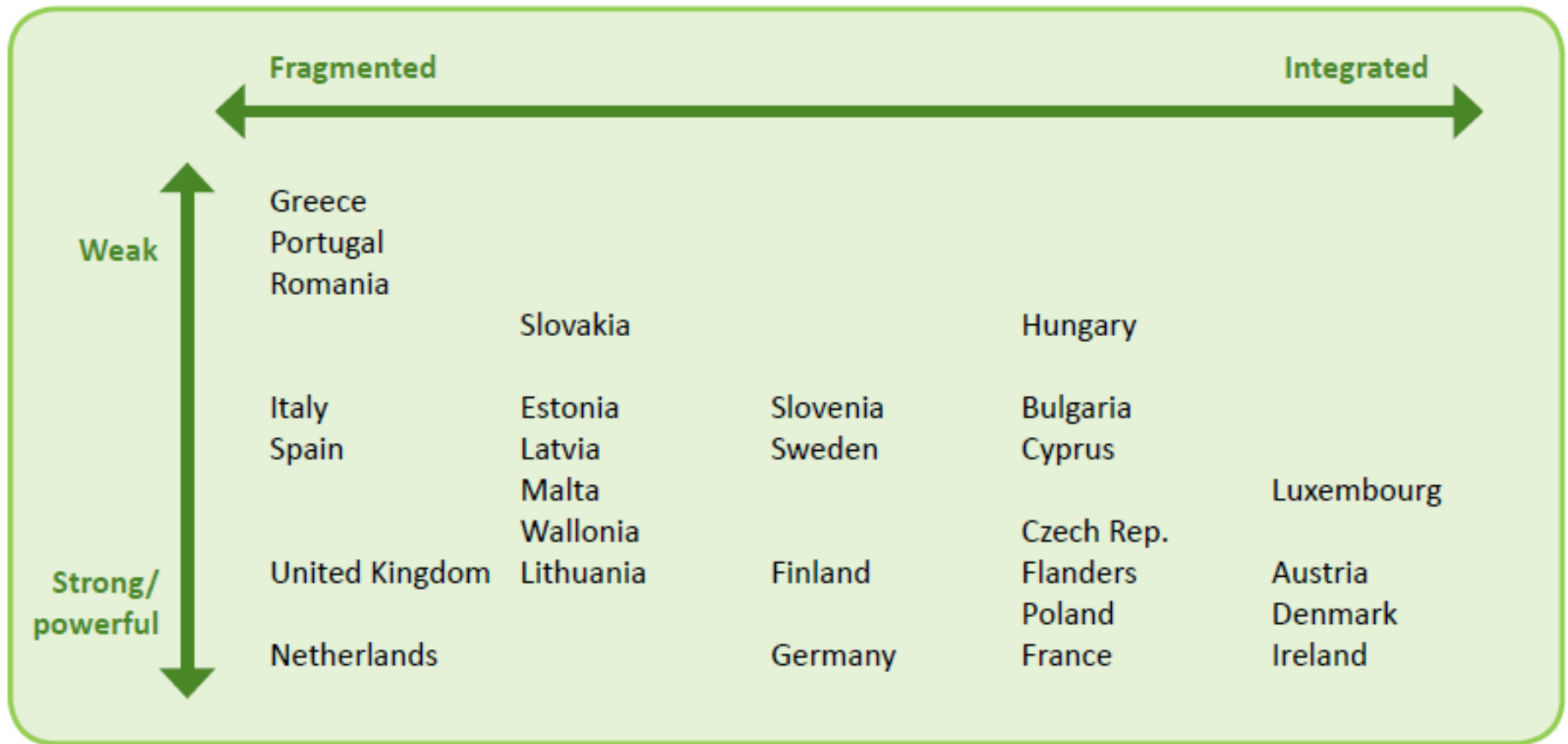
Characterising AKIS

- National AKIS are not directly comparable (national laws, institutions, cultures, farming systems)
- Distinction of two characteristics
 - ▶ **Strength:** Continuum from 'weak' to 'strong'
 - ▶ **Level of integration:** Continuum from 'fragmented' to 'integrated'



Characterising AKIS

- An overview of European AKIS (as of 2014)





Characterising AKIS

- European AKIS are characterised by a mix of public and private actors = institutional pluralism
- No countries where only public actors dominate the knowledge system
- Both public organisations and private enterprises provide advisory services
- Agricultural education (e.g. colleges) may have mixed financing or are completely private.

How to better organise farm advice?

- Good examples would feature:
 - ▶ Regular assessments of farmers' needs
 - ▶ Close cooperation between research, education, farmers, advisors
 - ▶ Interaction formats that allow knowledge EXCHANGE
 - ▶ Clarity in roles, i.e. farmers know where to go for what kind of advice
 - ▶ Investment into assessment of the quality of service provision, including transparent objectives and indicators (what does 'better' mean?)