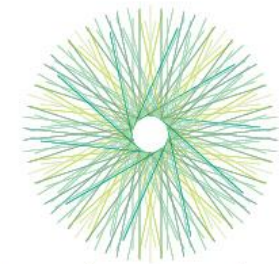


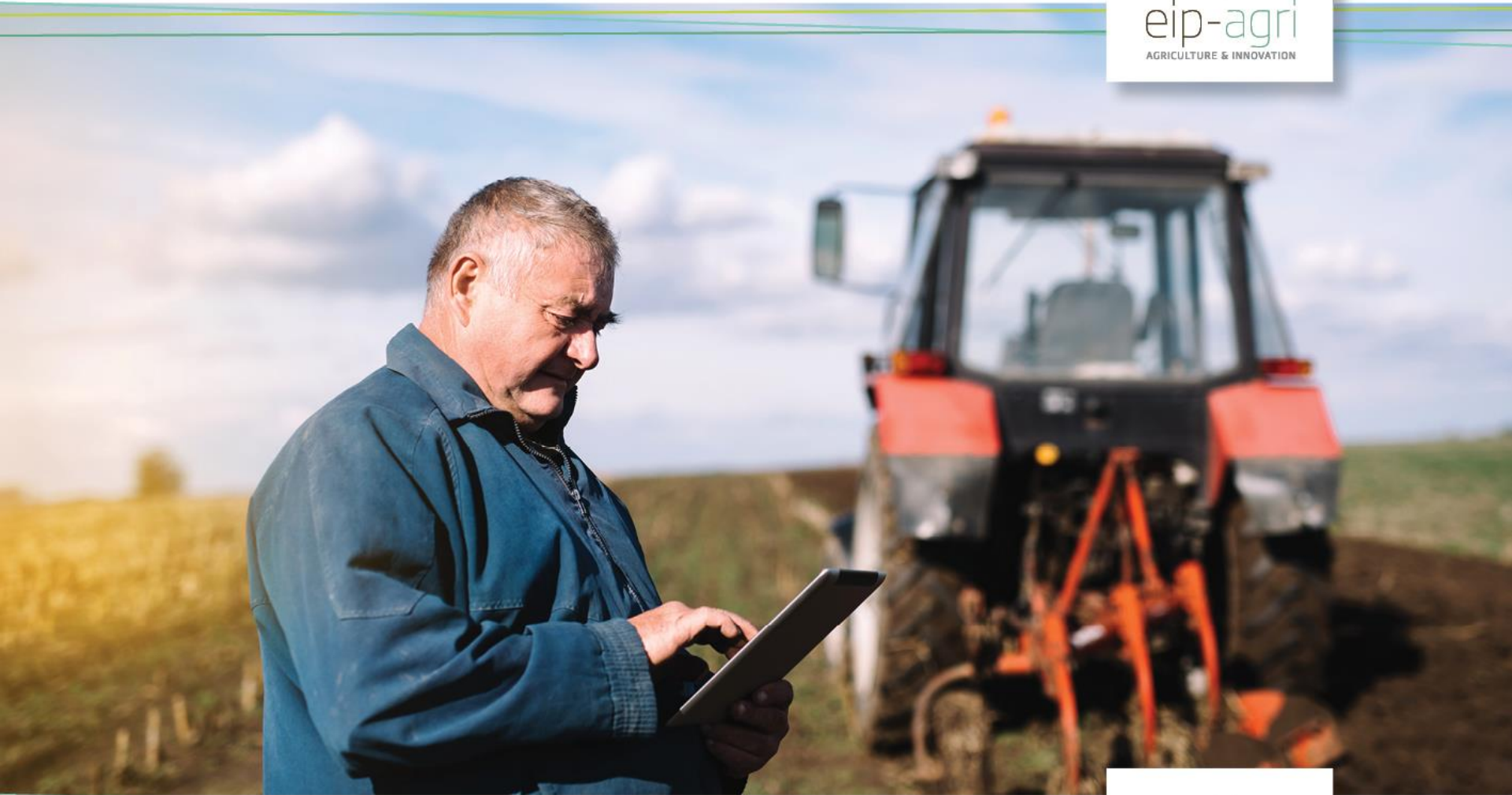
EIP-AGRI Seminar

New skills for digital farming

5-6 February 2020 – Aranjuez, Spain



eip-agri
AGRICULTURE & INNOVATION



funded by  European Commission



Programme

THURSDAY 6 FEBRUARY 2020

08:15 – 08:45 Registration for day 2

08:45 – 09:10 Introduction to the day

Session 2: How do we move forward?

09:10 – 10:45 Developing skills for digitalisation: An inspirational journey

Presentations by: *George Beers (NL), Miguel Cordero (ES), Beatrice Dingli (FR), Thomas Engel (DE), Hubert Gerhardy (DE), Lotte Ipsen (DK), Tom Kelly (IE), Gintare Kucinskiene (Lt), Hercules Panoutsopoulos (GR), Tetiana Pavlenko (DE), Jürgen Vangeyte (BE)*

10:45 – 11:15 Coffee break



Selected survey results on the uptake of precision agriculture technologies - Challenges & Drivers -

EIP-AGRI Seminar – New Skills for Digital Farming

Spain, February 2020

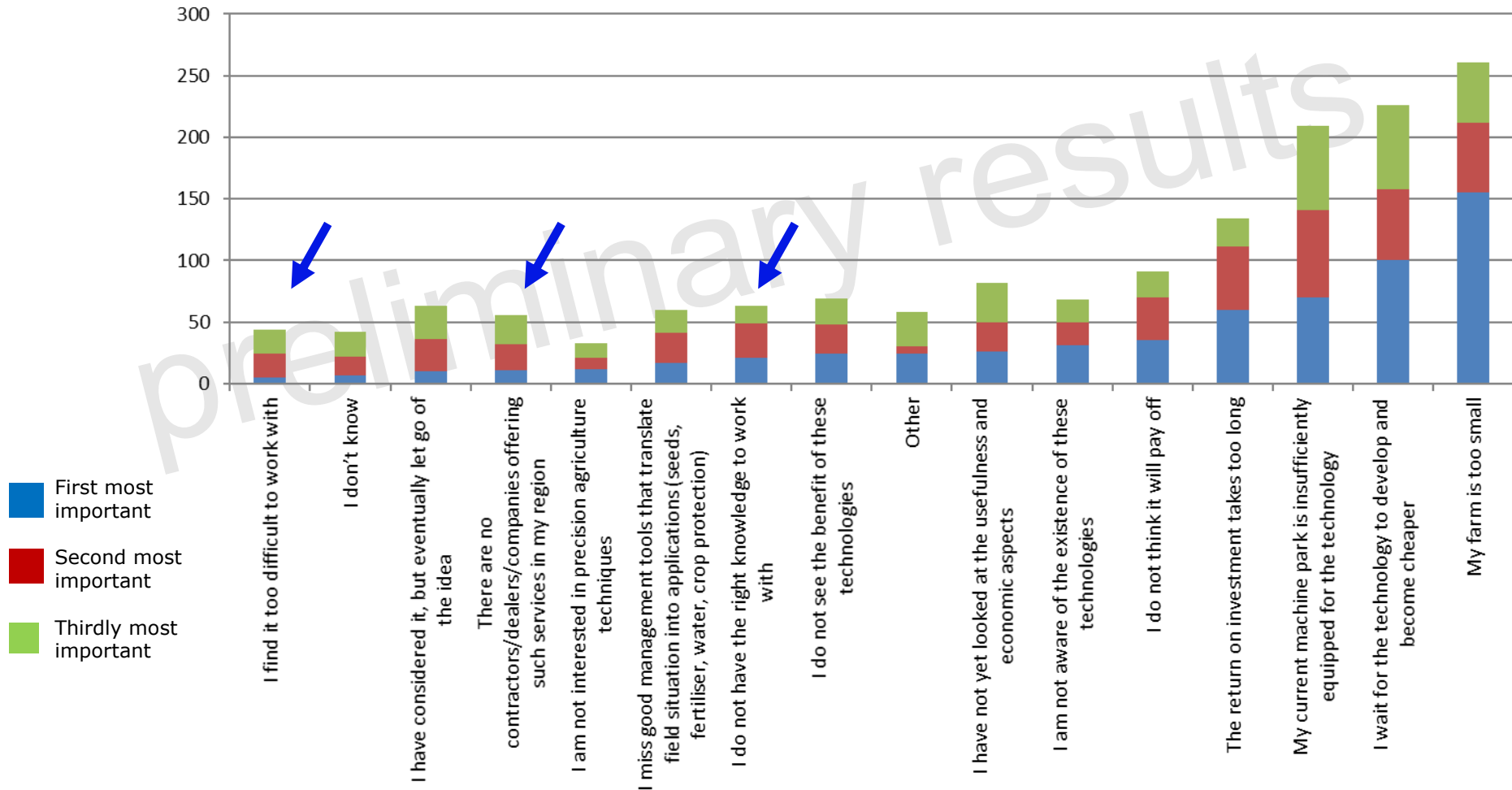
Prepared by: Riccardo Borgia, Martin Kukk, Laura Aguglia, Andrea Furlan, Doris Marquardt
DG AGRI - European Commission

Overview

- Joint project carried out by the EEA, the EU Commission (DG AGRI, DG ENV, DG CLIMA, DG GROW, JRC, Eurostat), Copa-Cogeca and CEMA; supported by Wageningen Environmental Research (WEnR).
- Surveys among
 - Farmers and their organisations
 - Representatives of the machinery sector
 - Contractors
 - Managing Authorities, Paying Agencies, Farm Advisory Services
- Main objectives
 - **Assess extent of current use of PAT and bottlenecks to their uptake**
 - Assess existing policy support and vehicles to the use of PAT
 - Inform policy-makers, sectors and stakeholders about the potential of PAT and how its use can be facilitated

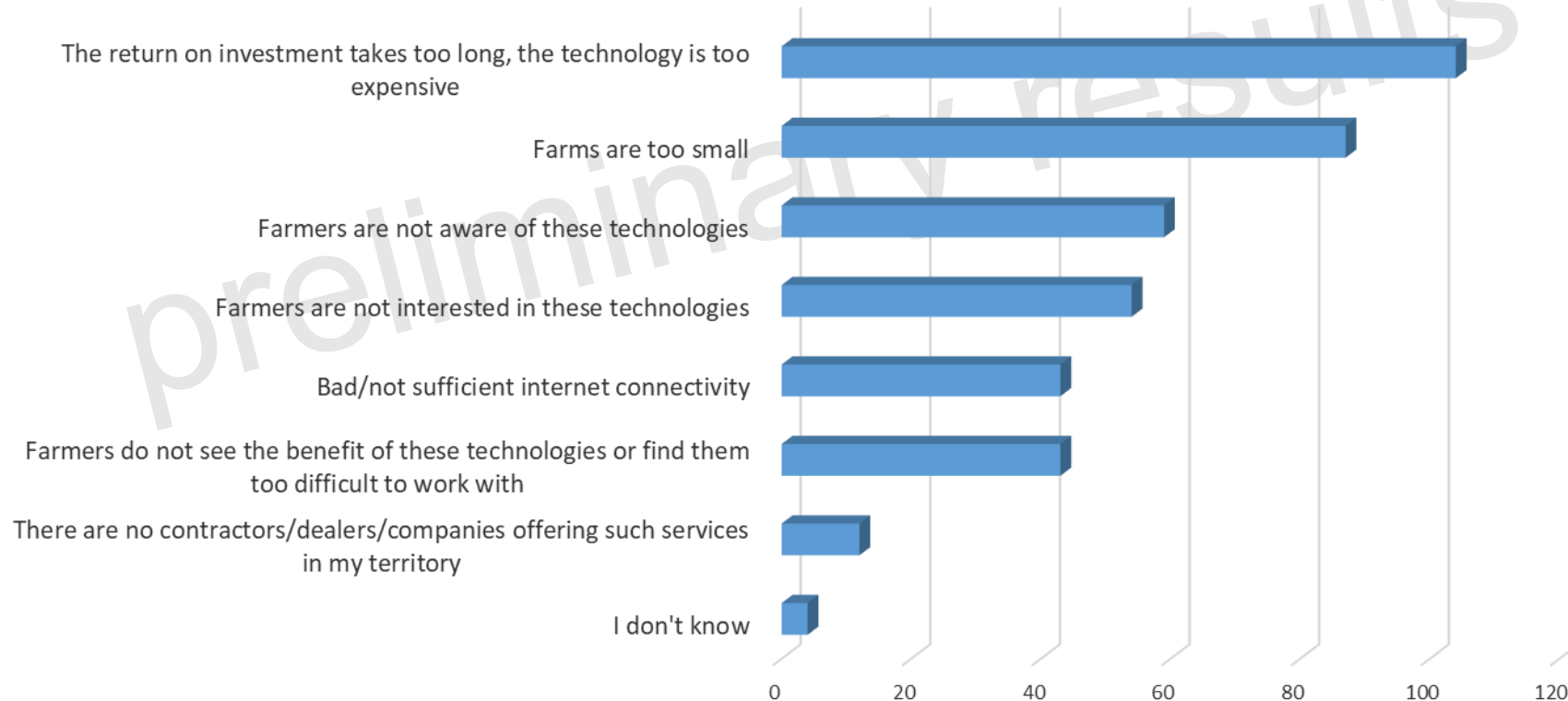
Bottlenecks for the uptake of PAT- Farmers

Answers to the questions: Why have on your farm no PAT been used so far?
What prevents you from using PAT?



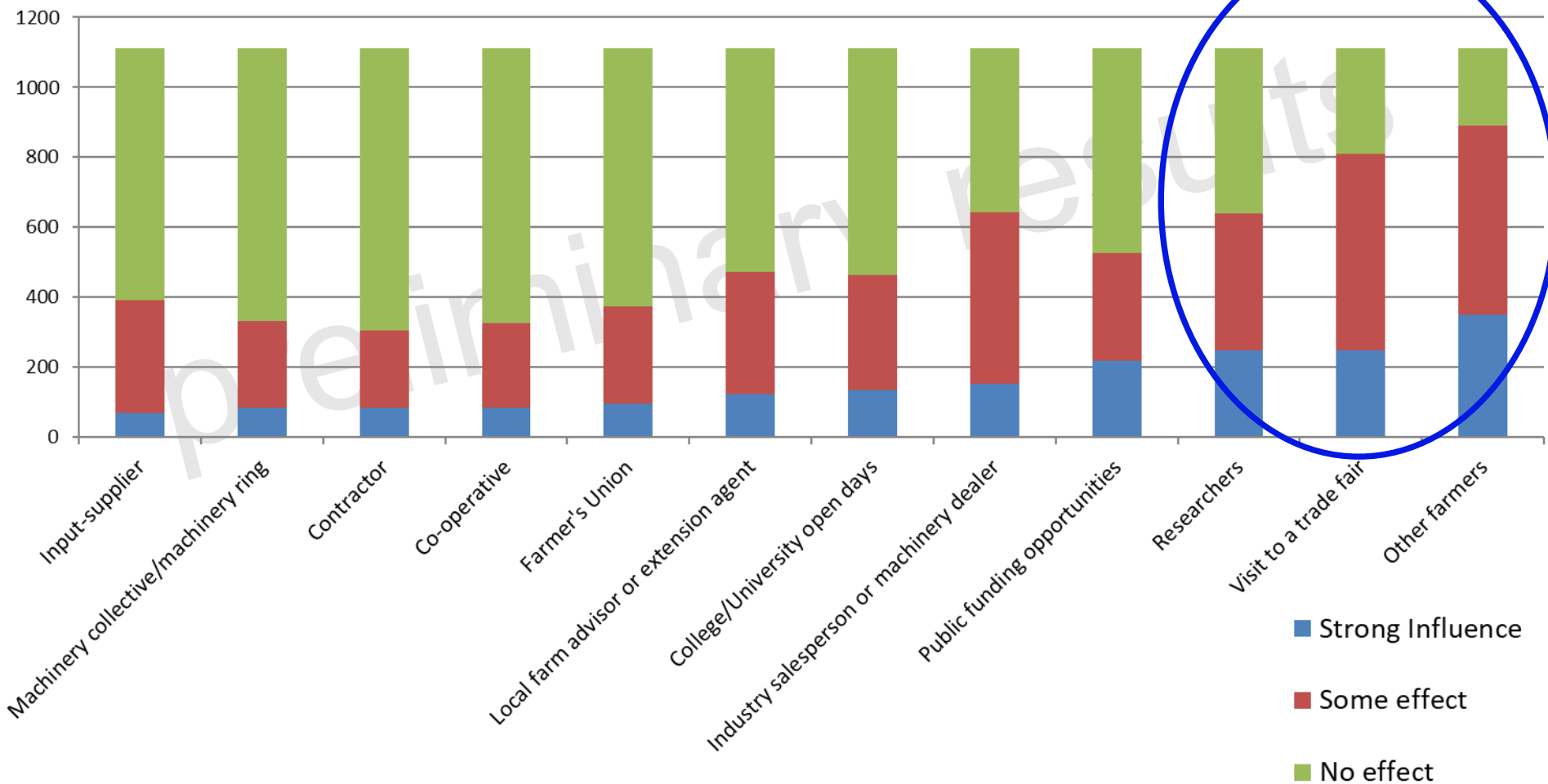
Bottlenecks for the uptake of PAT – views of public authorities

Are there any barriers to PAT adoption in your territory?



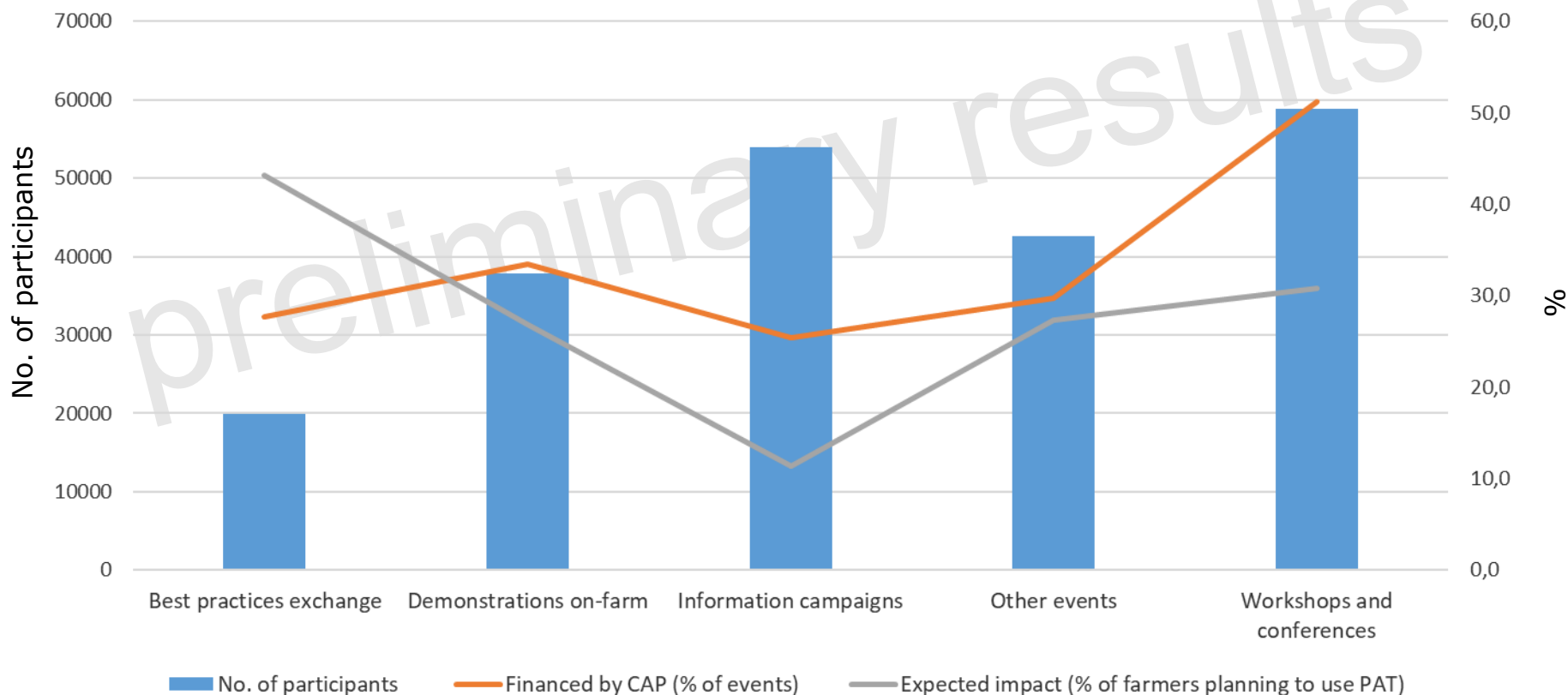
Drivers for uptake – Farmers

Answers to the question: Who or what did influence your decision to use precision agriculture/precision livestock farming?



Public support to capacity building to PAT uptake

Which information initiatives were implemented by your organisation to promote PAT utilization within the farming community in your territory?



A winter landscape with snow-covered fields, bare trees, and a herd of cows grazing. The scene is set in a rural area with rolling hills in the background under a clear blue sky. Several tall, thin trees with bare branches are scattered across the field. In the foreground, a herd of black and white cows is grazing on the snow-covered ground. The overall atmosphere is peaceful and serene.

Thank you

Contact

Dr Doris Marquardt
European Commission
DG AGRI, Unit B2
Doris.marquardt@ec.europa.eu

Further information on the surveys can be found