



EIP-AGRI Workshop

'Opportunities for farm diversification in the circular bioeconomy'

DAY 1 – 6 FEBRUARY 2019

13:00 – 13:50

Welcome & introduction

- Ms. Sarah Watson, Lead facilitator. Warm up: who is in the room?
- Mr. Darius Liutikas, Vice-minister - Ministry of Agriculture of Lithuania. Welcome to Lithuania
- Mr. Alberto D'Avino, European Commission DG AGRI. Introduction to DG AGRI and EIP-AGRI activities
- Interviews with:
 - Mr. Paolo Mantovi, EIP-AGRI Operational Group representative
 - Ms. Efthymia Alexopoulou, Researcher
 - Mr. James Gaffey, BBI project representative
- Introducing the event programme and the Open Space opportunity, Ms. Sarah Watson

13:50 – 14:20

Presentations

- Mr. Liutauras Guobys, European Commission DG RTD. Introduction to the EU bio-economy strategy,
- Mr. Jose Ruiz ESPI, European Commission DG AGRI. Feedback on a workshop for policy makers on the integration of primary producers in the bio-economy,
- Ms. Laura Jalasjoki, ENRD Contact Point. State of play on the ENRD Thematic Group on the bio-economy,

14:20 – 14:40

The Bio-economy - a challenge and an opportunity for farmers

- **Mr. Kevin O'Connor, Chairperson Scientific Committee BBIJU. Utilising relevant case studies to highlight practical opportunities for diversification into the bio-economy, focused on the farmer's perspective.**

14:45 – 15:45

Presentations of four projects to highlight the broad variety of work being undertaken under the circular bio-economy theme

- Mr. Johan Sanders, CEO of Sannovations - Developer of small-scale bio-economy systems.
- Ms. Lucrezia Lamastra, Researcher at Università Cattolica Del Sacro Cuore - involved in two Operational Groups.
- Mr. Fernando Sebastián Nogués, Coordinator of AGROINLOG - H2020 project
- Ms. Tuula Raukola - Involved in various innovative projects in circular bio-economy in Finland

15:50 – 16:20

Coffee break

Kevin O Connor
Scientific Committee BBIJU



funded by the European Commission



The bioeconomy – A challenge and an opportunity for farmers

Prof. Kevin O Connor

Director BEACON SFI bioeconomy research centre Ireland

Chair of the Scientific Committee BBIJU

Member of Irish Bioeconomy Foundation





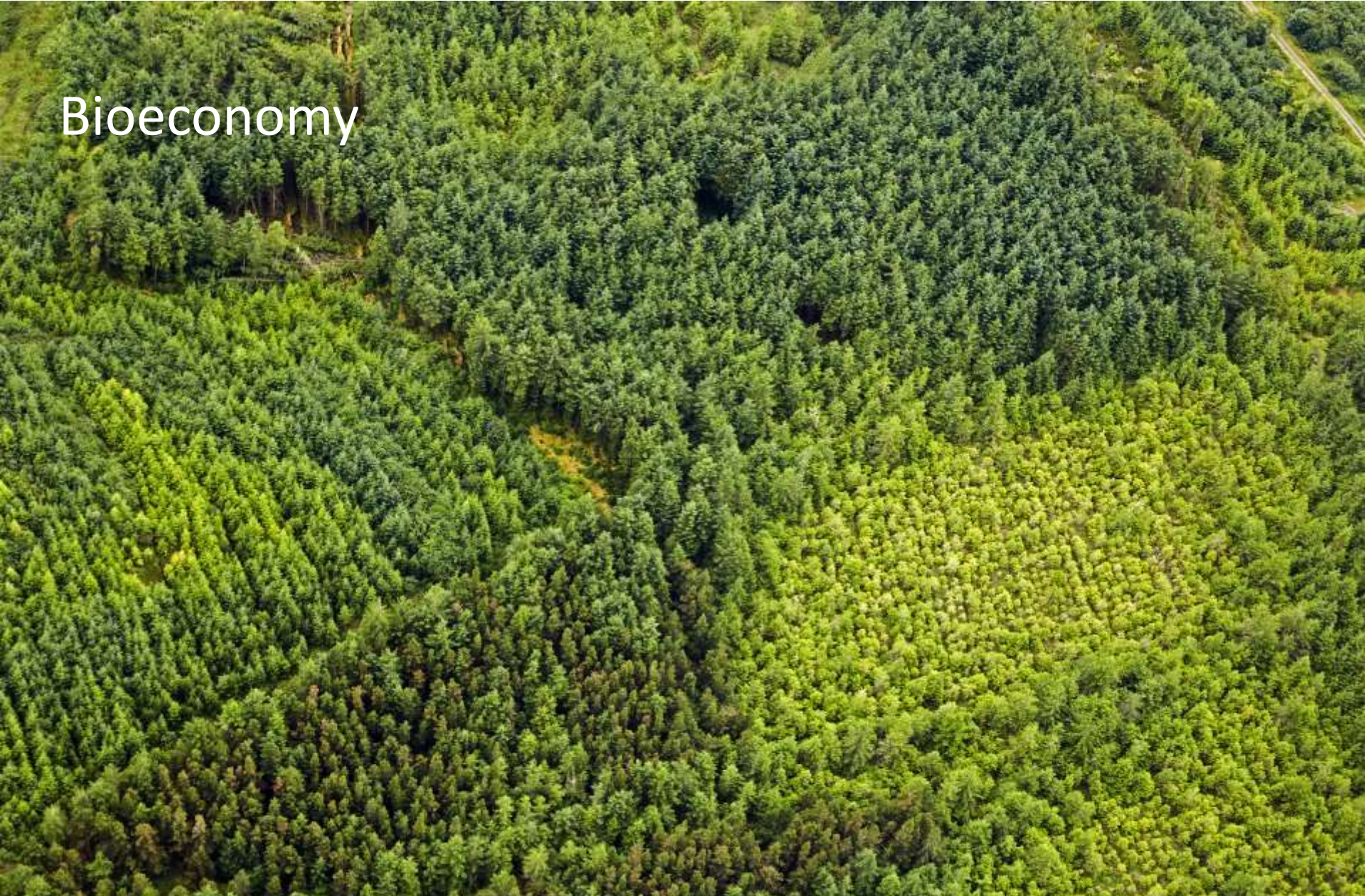
The transition

The transition from a fossil to a bioeconomy is widely recognized as a necessity, rather than an option

A sustainable bioeconomy



Bioeconomy





Bioeconomy

Paints and dyes



Onion skins

Turmeric

Squid ink

Blueberries

Red cabbage

Beets

Solvents and glues



Pharmaceuticals



A photograph of a forest path. The path is made of gravel and dirt, winding through a dense forest. On the right side of the path, there is a large, thick tree trunk with rough, textured bark. In the foreground, there are lush green bushes and ferns. The background is filled with tall, slender trees, likely redwoods or sequoias, reaching towards a bright sky. The overall scene is vibrant and natural.

Inspirational
Natural
capital

Biodiversity



Fertiliser Bioactives



Biodiversity
Energy
Climate





Bioeconomy is beyond just fossil replacement

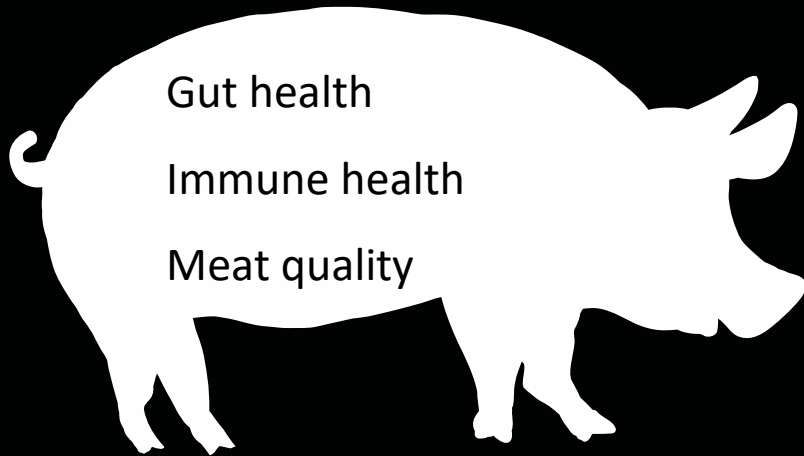
Biobased functionality

Products without a
fossil equivalent



Bioeconomy:
Human health
Human nutrition

Bioeconomy for animal health



Bioeconomy for soil health

Biocontrol agents

Bio-stimulants

Biobased fertilisers





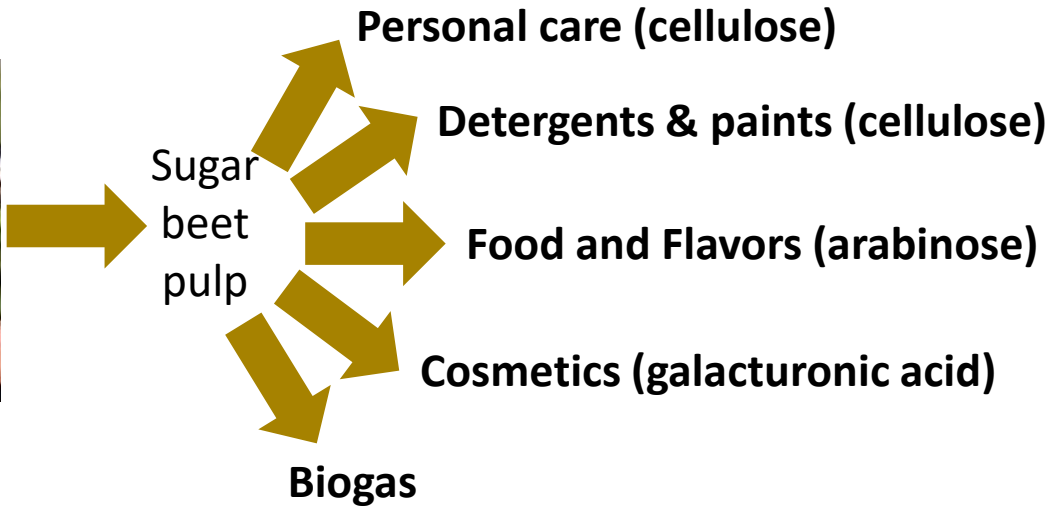
Farmers are central to the bioeconomy

**Biomass producers/harvesters are invisible/@ bottom of value chain
Stimulate, re-organise, re-educate, innovate
Feedstock, processing technologies, products, markets**



PULP2VALUE

Netherlands





First 2 Run

Italy

Marginal
land &
Brownfield
site

- New value chains
- Reuse of defunct Industrial site

Organic
acids

- Polymers
- Lubricants
- Cosmetics

Co-product
valorization

- Energy
- Feed





EXILVA

Norway

- **Nanocellulose at industrial scale** - Microfibrilated cellulose (MFC)
- **Sector:** Home and personal care, adhesives, agrochemicals, detergents, coatings



- **Challenges:**
 - Processing of wood into MFC
 - Operation of world's first MFC industrial plant (2000 tons/year)





AgriChemWhey

Ireland

Developing a dairy side stream biorefinery



Lactic acid

Natural Preservative

Green solvent

Personal care

Bioplastic

Minerals

Supplement
Biostimulant



Research and innovation

Partnership for an integrated bioeconomy ecosystem

Fundamental
research

Pilot
scale


Demonstration
& Market place



AgriChemWhey



Conclusion

- Bioeconomy presents **new opportunities and challenges** for farmers and rural communities
 - **Farmers must organize and educate themselves** to avail of the opportunity
 - **Farmers** should not simply be biomass suppliers but **shareholders in the new businesses**
 - New value chains within the **bioeconomy require cooperation** of biomass producers, industry, policy makers and researchers
 - **Policy** can enable farmer participation and benefit in the new bioeconomy
- 

Thank you

