
DIH for Smart Agriculture Competence Centre

Prof. Dr.-Ing. Peter Liggesmeyer

Executive Director, Fraunhofer IESE

President, German Informatics Society

Software Dependability, University of
Kaiserslautern



Fraunhofer-Gesellschaft – Generating Innovation

About

Application-oriented research – direct benefit for companies and society



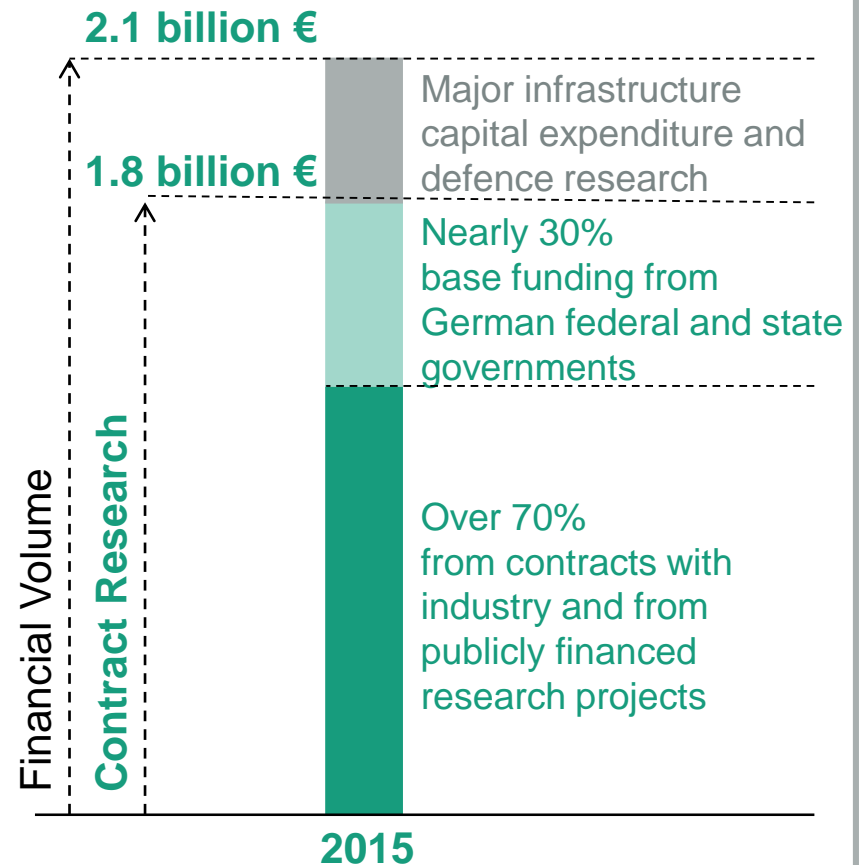
69 institutes and research units



24,500 staff



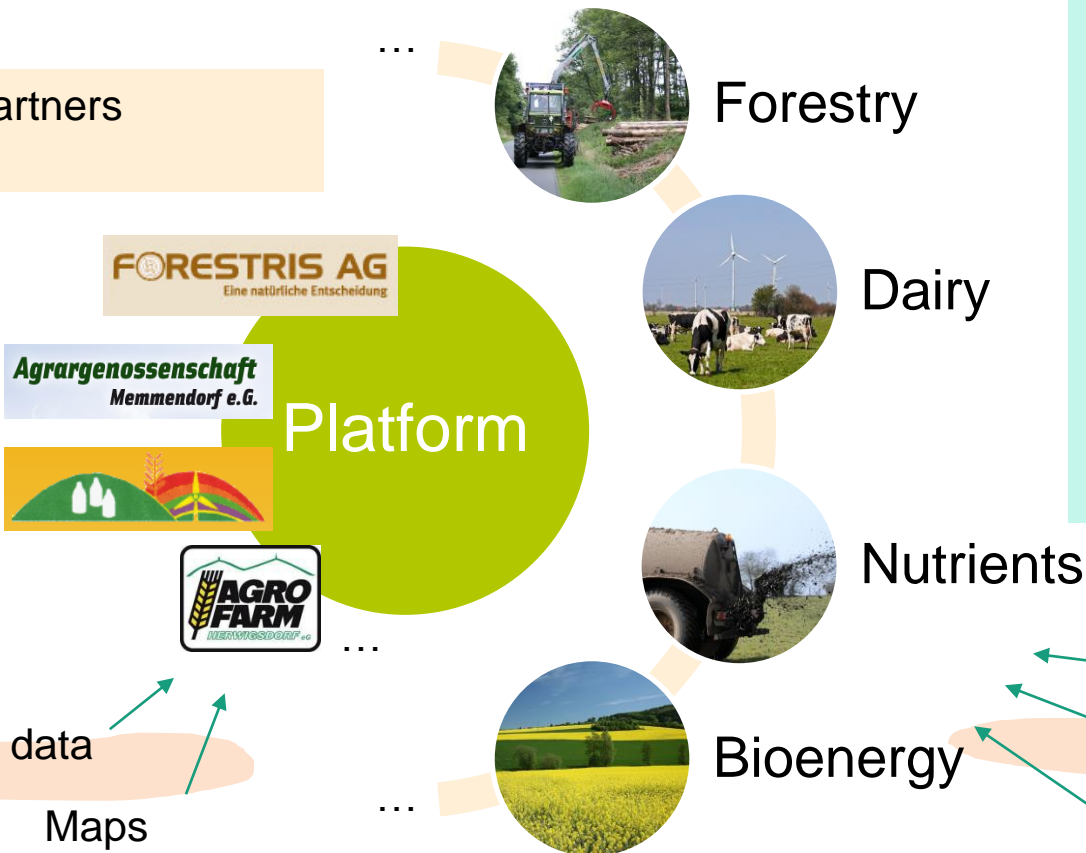
7 independent subsidiaries abroad



An example: Smart agricultural ecosystems

Innovation Center Applied System Modeling: “Smart Farming” Living Lab @Fraunhofer IESE

- SME partners



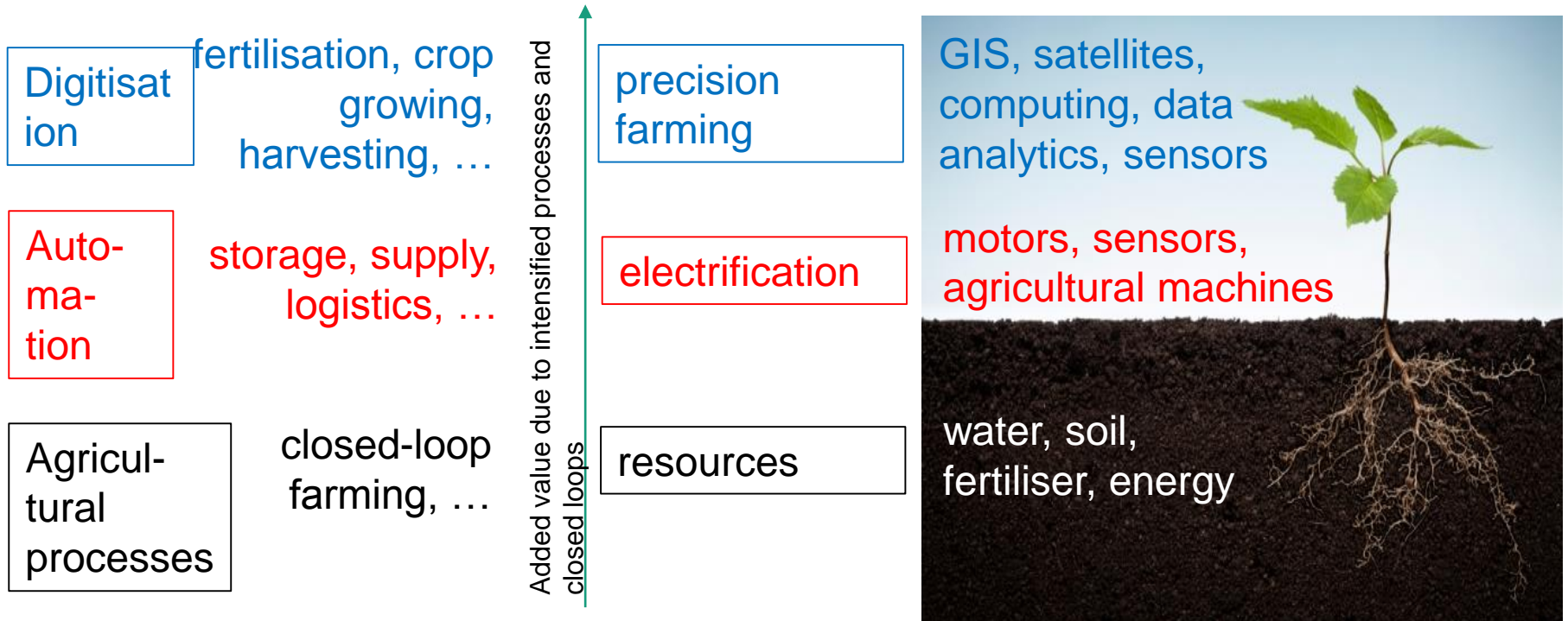
Smart Farming Software:

- Security
- Open architectures
- Modular safety
- Mobile devices



Fraunhofer Smart Closed-Loop Agricultural Research

Digitisation of Agriculture



Digital Innovation Hub

Competence Centre

- Smart agriculture is a large ecosystem that requires expertise in different domains => competence centre as a clearinghouse service
- Fraunhofer provides comprehensive innovative solutions together with companies that produce equipment, fertilisers, digital services, ...
- Many complicated key issues, e.g.:
 - Understanding trade-offs between various aspects
 - Predicting the consequences of decisions
 - ...

Digital Innovation Hub

Competence Centre and Fraunhofer

- Broad coverage of domains and technologies
- Strong history in industry cooperations (also SMEs and Start-ups), projects w.r.t. smart agriculture are already in place
- Strong history in running publicly funded projects (also on the EU-level)
- Expertise in bridging the gap between research and practise
- European-based, but institutes and offices distributed worldwide (also representatives at Brussels)
- Similar activities currently very successful (e.g., Industrial Data Space; IDS)
- Fraunhofer is willing to bring partners together and is very flexible w.r.t. cooperation models