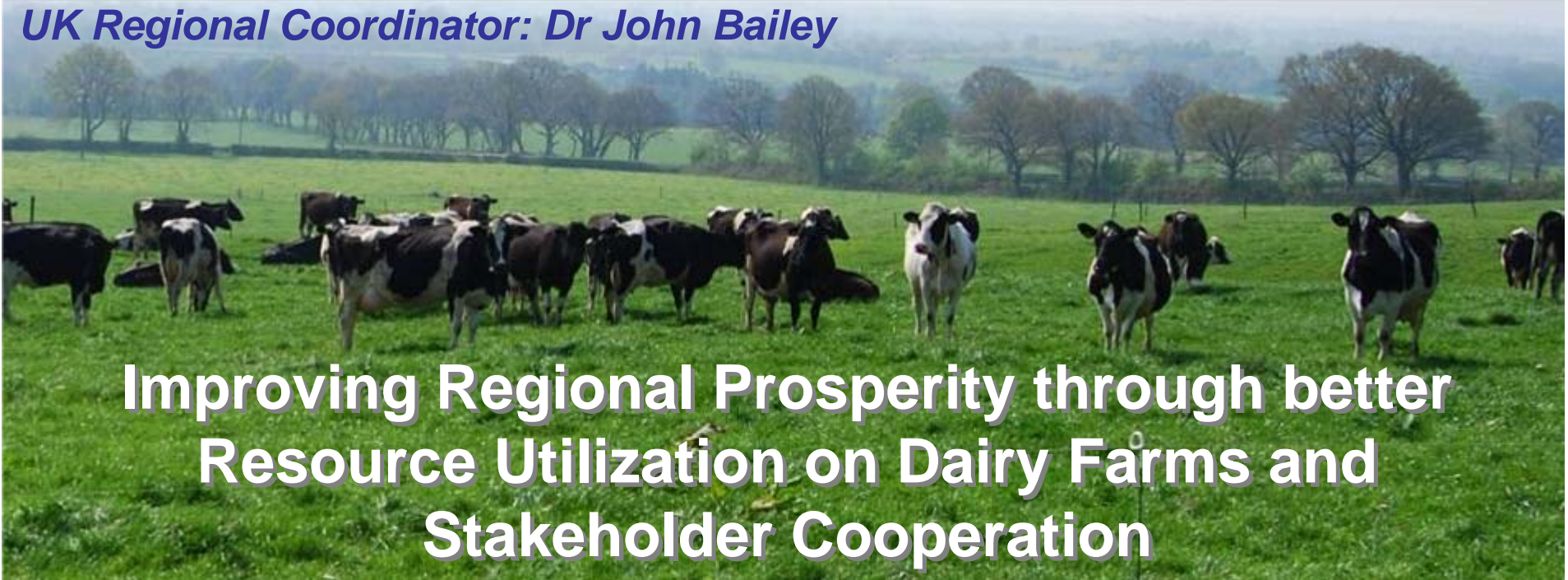
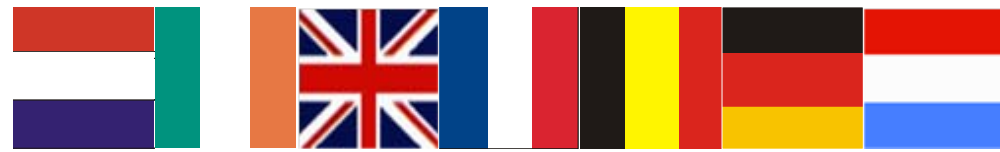




UK Regional Coordinator: Dr John Bailey



Improving Regional Prosperity through better Resource Utilization on Dairy Farms and Stakeholder Cooperation



www.interregdairyman.eu



PRESENTATION OUTLINE



- ▀ **Background to DAIRYMAN**
- ▀ **Project Overview**
- ▀ **Questions being Addressed in DAIRYMAN**

- ▀ **DAIRYMAN Stakeholders**
- ▀ **DAIRYMAN Networks and Linkages**

- ▀ **An Assessment of the Effectiveness of DAIRYMAN Linkages**





BACKGROUND TO DAIRYMAN



- Climatic conditions in North West (NW) Europe are good for dairy production, and extensive markets are close at hand
- Nutrient and GHG emissions, however, tend to be high, owing to suboptimal efficiencies in the use of fertilisers, feed and energy
- These inefficiencies are hindering the delivery of key environmental services, e.g. clean water, and threatening the ecological and economic sustainability of dairy farming





PROJECT OVERVIEW



- DAIRYMAN is an INTERREG project aimed at enhancing both the competitiveness and the ecological performance of dairy farming in NW Europe
- Its ultimate goal is to strengthen rural communities and regional economies





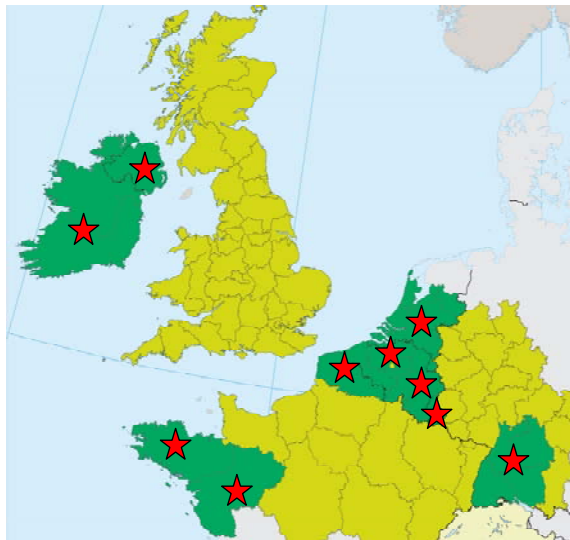
PROJECT OVERVIEW



DAIRYMAN
involves 14 Partner
Organizations



From 10 countries or
regions  in NWE



Netherlands



1. Wageningen UR/ Wageningen University
2. Wageningen UR/Plant Research International
3. Wageningen UR/Livestock Research

Ireland



4. Teagasc

UK



5. Agri-Food and Biosciences Institute (AFBI);
Sub-Partner: College of Agriculture, Food and Rural Enterprise (CAFRE).

France



6. Institut de l'Elevage
7. Chambre Régionale d'Agric' de Bretagne
8. Chambre Régionale d'Agric' des Pays de la Loire
9. Chambre Régionale d'Agric' du Nord Pas-de-Calais

Belgium



10. Instituut voor Landbouw- en Visserijonderzoek
11. Provincie Antwerpen (Hooibeeckhoeve)
12. Centre Wallon de Recherches agronomiques

Germany



13. Landwirtschaftliches Zentrum für Rinderhaltung, Grünlandwirtschaft, Milchwirtschaft, Wild und Fischerei Baden-Württemberg“ (LAZBW)

Luxembourg



14. Lycée Technique Agricole

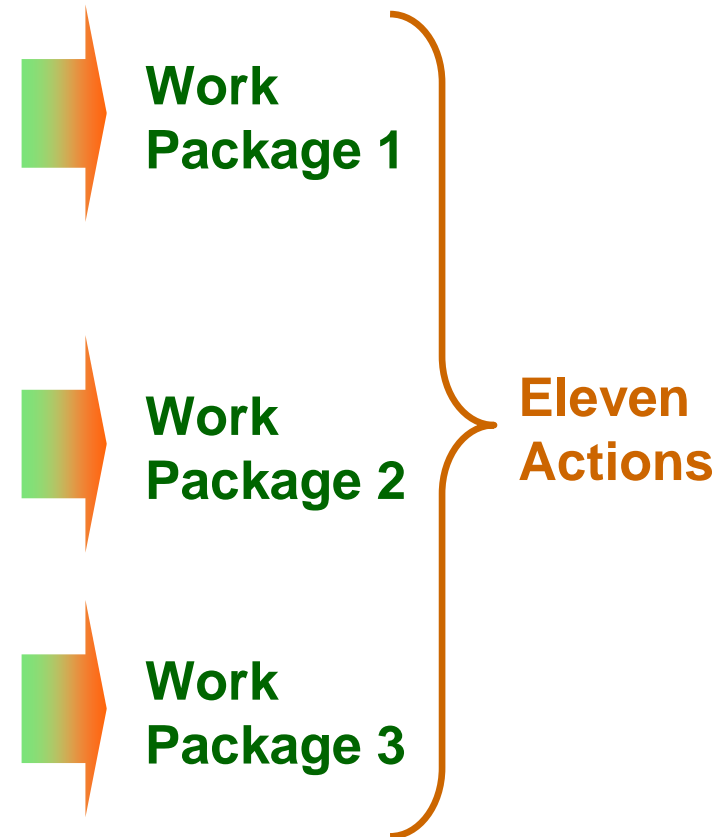
www.interregdairyman.eu





QUESTIONS BEING ADDRESSED

- How the ecological, economic and social performances of dairy sectors differ between regions, and how they might be improved via stakeholder cooperation?
- How dairy farm performances and on-farm management practices differ between regions, and how networking and use of innovative tools might lead to improvements?
- What are the most effective mechanisms for knowledge exchange between dairy industry stakeholders, e.g. researchers, farmers, advisors, and policy makers



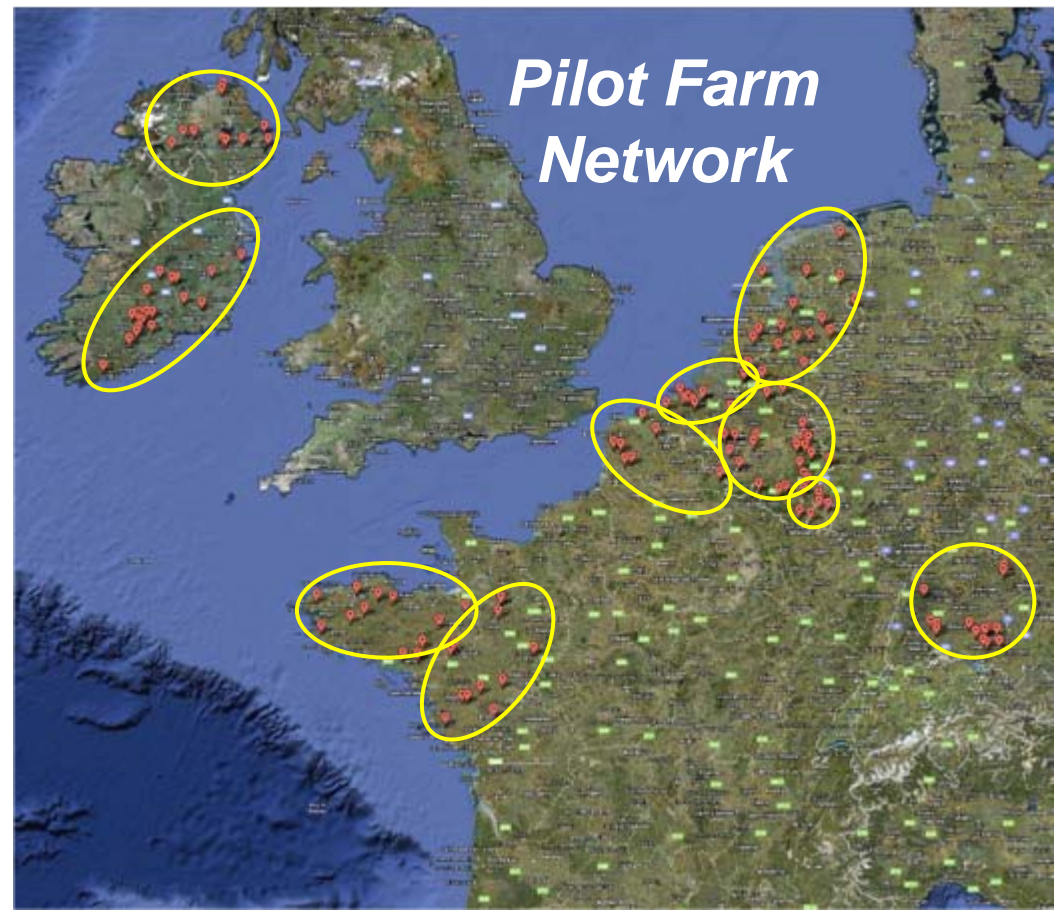


DAIRYMAN STAKEHOLDERS



Internal Stakeholders

- /// *Pilot dairy farmers (130)*
- /// *Advisors (50+)*
- /// *Researchers (50+)*
- /// *Students (100+)*





DAIRYMAN STAKEHOLDERS



Internal Stakeholders

- /// *Pilot dairy farmers (130)*
- /// *Advisors (50+)*
- /// *Researchers (50+)*
- /// *Students (100+)*

External Stakeholders

- /// Local dairy farmers
- /// Researchers
- /// Environmentalists
- /// Teachers
- /// Dairy Processors
- /// Policy Makers
- /// Politicians





DAIRYMAN NETWORKS & LINKAGES



PF Commercial Pilot Dairy Farmer

AS Agricultural School

KTC Knowledge Transfer Centre

Regional Zone of Influence

Inter-regional Zone of Influence



Regional Network



Inter-regional Network

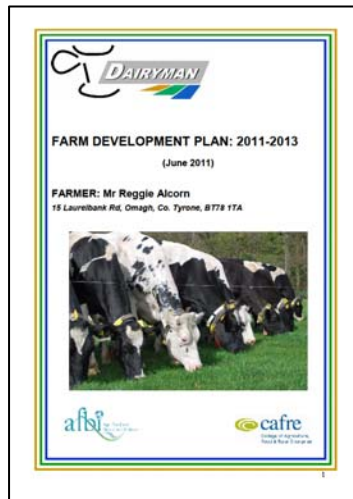




ASSESSMENT OF LINKAGES ETC



Pilot Farmer – Advisor – Researcher linkages, at regional and inter-regional levels, have been *HIGHLY EFFECTIVE* in DAIRYMAN



DEVELOPMENT PLAN (DP) OBJECTIVES:

Objective	Importance	Explanation
1	1	Ensuring farm sustainability on the present strategic plan.
2	2	Ensuring farm sustainability on the present strategic plan.
3	2	Ensuring farm sustainability on the present strategic plan.
4	2	Ensuring farm sustainability on the present strategic plan.
5	2	Ensuring farm sustainability on the present strategic plan.
6	2	Ensuring farm sustainability on the present strategic plan.
7	2	Ensuring farm sustainability on the present strategic plan.
8	2	Ensuring farm sustainability on the present strategic plan.
9	2	Ensuring farm sustainability on the present strategic plan.
10	2	Ensuring farm sustainability on the present strategic plan.
11	2	Ensuring farm sustainability on the present strategic plan.
12	2	Ensuring farm sustainability on the present strategic plan.
13	2	Ensuring farm sustainability on the present strategic plan.
14	2	Ensuring farm sustainability on the present strategic plan.
15	2	Ensuring farm sustainability on the present strategic plan.
16	2	Ensuring farm sustainability on the present strategic plan.
17	2	Ensuring farm sustainability on the present strategic plan.
18	2	Ensuring farm sustainability on the present strategic plan.
19	2	Ensuring farm sustainability on the present strategic plan.
20	2	Ensuring farm sustainability on the present strategic plan.

INDICATORS AND TARGETS TO ACHIEVE OBJECTIVES

Indicator	Unit	Actual value	Minimum value	Target value
1	€	100	100	100
2	€	100	100	100
3	€	100	100	100
4	€	100	100	100
5	€	100	100	100
6	€	100	100	100
7	€	100	100	100
8	€	100	100	100
9	€	100	100	100
10	€	100	100	100
11	€	100	100	100
12	€	100	100	100
13	€	100	100	100
14	€	100	100	100
15	€	100	100	100
16	€	100	100	100
17	€	100	100	100
18	€	100	100	100
19	€	100	100	100
20	€	100	100	100

FARM PORTRAIT

APPENDIX 1



Investing in Opportunities

This project has received European Regional Development Funding through INTERREG IV B.

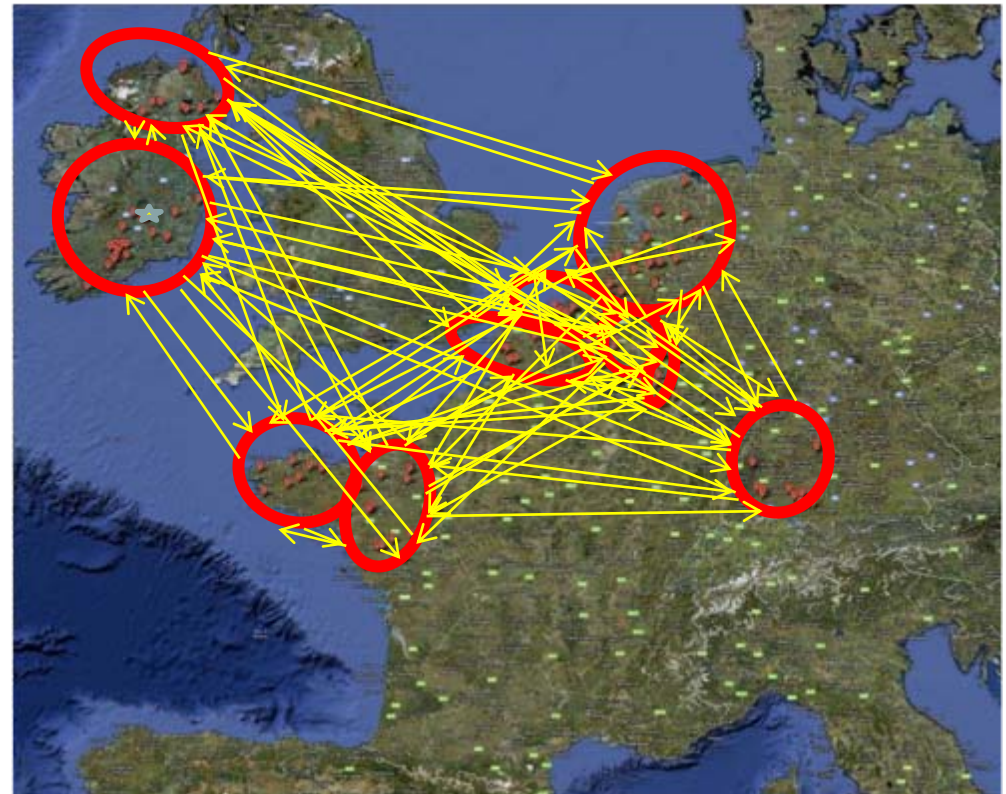
INTERREG IVB



ASSESSMENT OF LINKAGES ETC



- Pilot Farmer – Advisor – Researcher linkages, at regional and inter-regional levels, have been **HIGHLY EFFECTIVE** in DAIRYMAN
- Researcher linkages across KTC's and Researcher – Student linkages at regional and interregional levels, have also been **PRODUCTIVE**





ASSESSMENT OF LINKAGES ETC



- Pilot Farmer – Advisor – Researcher linkages, at regional and inter-regional levels, have been **HIGHLY EFFECTIVE** in DAIRYMAN
- Researcher linkages across KTC's and Researcher – Student linkages at regional and interregional levels, have also been **PRODUCTIVE**
- Pilot Farmer – Advisor – Local Farmer linkages are **PROGRESSING** as results become available for dissemination at open days and local fairs etc





ASSESSMENT OF LINKAGES ETC



- Pilot Farmer – Advisor – Researcher linkages, at regional and inter-regional levels, have been **HIGHLY EFFECTIVE** in DAIRYMAN
- Researcher linkages across KTC's and Researcher – Student linkages at regional and interregional levels, have also been **PRODUCTIVE**
- Pilot Farmer – Advisor – Local Farmer linkages are **PROGRESSING** as results become available for dissemination at open days and local fairs etc
- Reseacher - Dairy Processor - Policy Maker linkages **BEGINNING TO DEVELOP** as the project matures and outputs become available for discussion and debate





UK Regional Coordinator: Dr John Bailey



THANK YOU FOR LISTENING



www.interregdairyman.eu