

eip-agri

AGRICULTURE & INNOVATION



16-17-18 September 2020

EIP-AGRI Seminar 'CAP Strategic Plans: the key role of AKIS in Member States'

eip-agri

AGRICULTURE & INNOVATION

Razvan Popa

Adept Foundation, Romania



16-17-18 September 2020

EIP-AGRI Seminar 'CAP Strategic Plans: the key role of AKIS in Member States'

Day 2: Thursday 17 September 2020

Part III: Main building blocks of AKIS

14:00 - 15:00

Integrating advisors in the AKIS to foster the sharing of knowledge and innovation for agriculture and rural areas

- **Introduction** to the topic – Inge Van Oost, DG AGRI
- **Inspirational speakers:**
 - Integration of Slovenian advisors in the AKIS – Anton Jagodic, Chamber of Agriculture and Forestry of Slovenia, SI
 - Experience from an NGO delivering advice and much more – Razvan Popa, Adept Foundation, RO
 - Develop innovation support services including innovation brokering, facilitation and innovation tools and much more - Marleen Gysen, Innovatiesteunpunt, BE
- **Inputs to the topic from participants:** highlights from the **Google Document B** – Mark Gibson, EIP-AGRI Service Point
- **Group discussion** in plenary

15:00 - 15:20

Coffee break



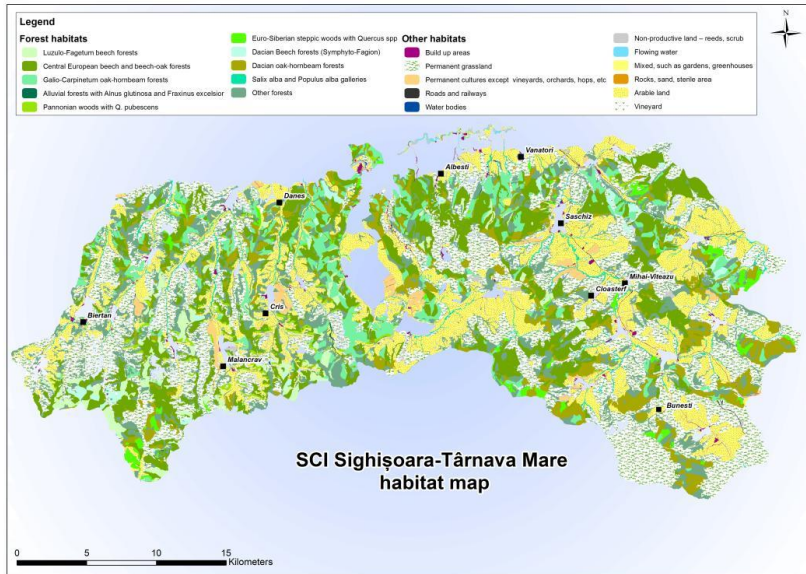
Funded by

Fundatia ADEPT Transilvania, experience from an NGO delivering advice and much more



*Cluj Napoca; România
17 september 2020*

Protecting Romania's unique **high-biodiversity landscapes** and the small-scale **farming communities** that have created them through **a integrated approach** in the **Advisory Service**



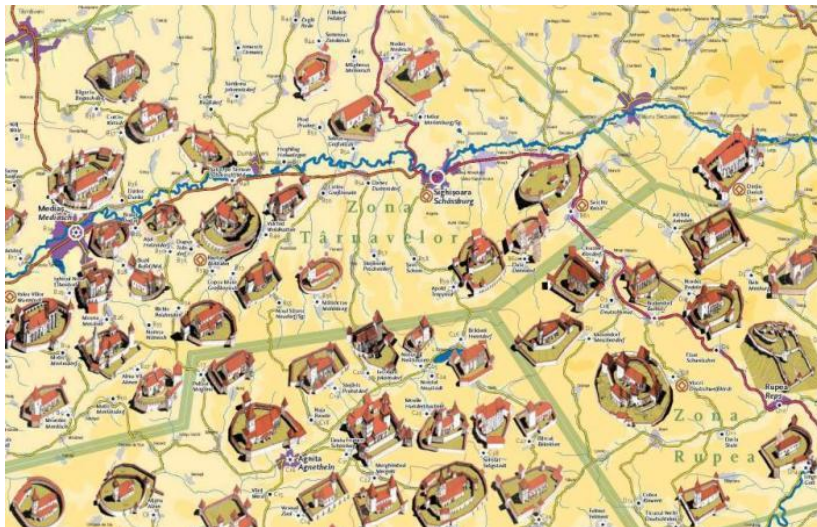
Natura 2000 site for species and habitats

ADEPT's Mission

„To protect the High Nature Value Farmed Landscapes of Transylvania, working with and supporting the small-scale farming communities that created them.”

..a romantic view of these landscape is not enough

We need a integrated, science and market-based approach in the advisory service.



Cultural landscape and traditional management

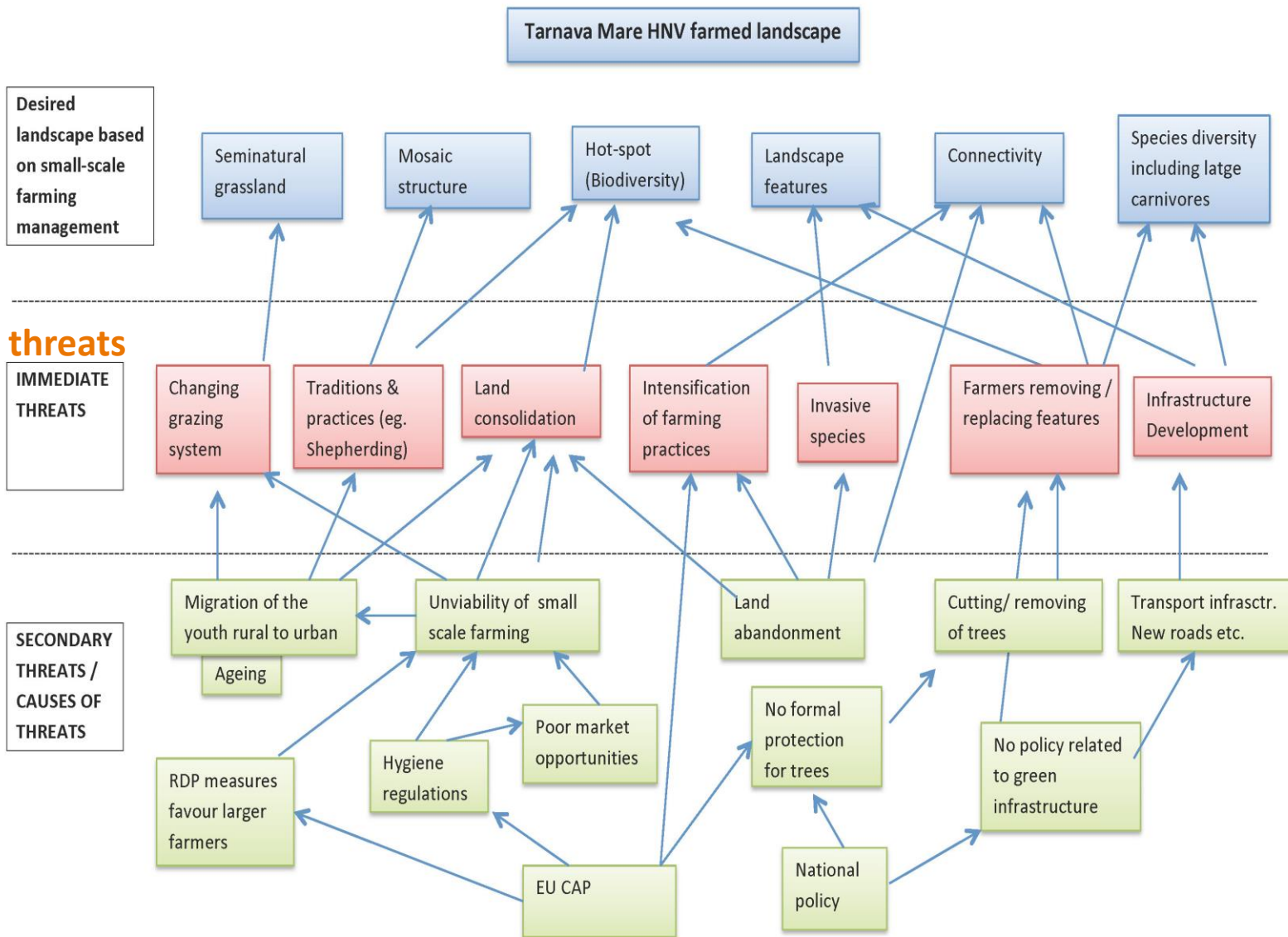
What are we doing?



established in 2004 on **5 principles:**

1. biodiversity conservation / landscape-scale approach,
2. identify / protect hotspots,
3. work with communities,
4. influence policy,
5. staff development and young professional building.

Why? This is reality, complex situation, environmental, social and economic approach is needed



High biodiversity conservation needs informed farmers

Tab. 2: Some EU Habitats Directive habitats typically found in Romania's HNV farmland areas

Code	Name
40A0*	Sub-continental Peripannonic scrub
6210*	Semi-natural dry grasslands and scrubland facies on calcareous substrates (<i>Festuco-Brometalia</i>) with important orchid sites
6230*	Mountain pastures with <i>Nardus</i>
6240*	Sub-Pannonic steppic grasslands
62C0*	Ponto-sarmatic steppes
6410	Molinea meadows
6430	Hydrophilous tall herb fringe communities of plains and of the montane to alpine levels
6510	Lowland hay meadows (<i>Alopecurus pratensis</i> , <i>Sanguisorba officinalis</i>)
6520	Mountain hay meadows

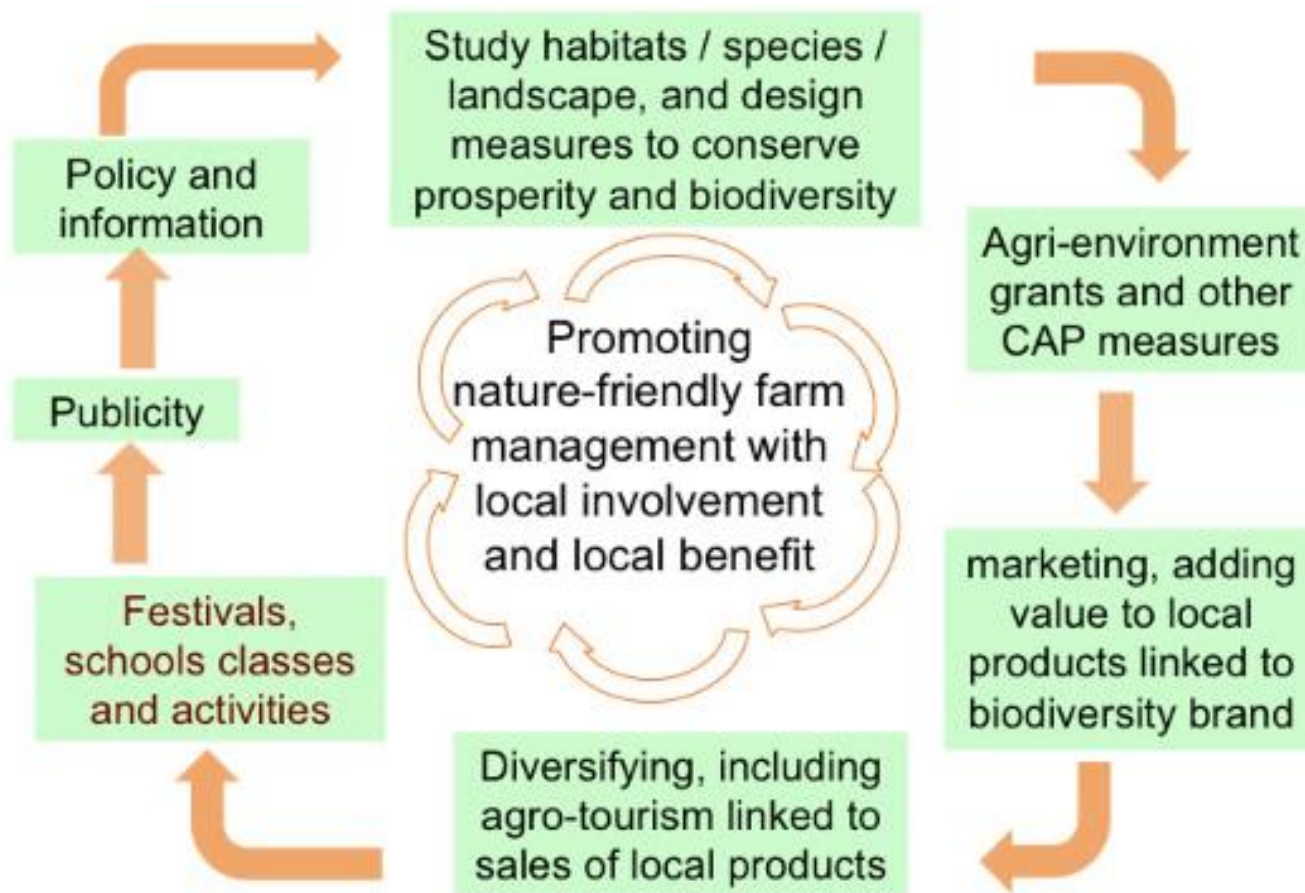
Tab. 4: Some EU Birds Directive species typically found in Romania's HNV farmland areas

Species	Species
<i>Aquila pomarina</i> (lesser spotted eagle)	<i>Crex crex</i> (corncrake)
<i>Aquila chrysaetos</i> (golden eagle)	<i>Picus canus</i> (grey-headed woodpecker)
<i>Circus gollicus</i> (short-toed eagle)	<i>Lanius collurio</i> (red-backed shrike)
<i>Circus aeruginosus</i> (western marsh harrier)	<i>Lanius minor</i> (lesser grey shrike)
<i>Circus cyaneus</i> (hen harrier)	<i>Lullula arborea</i> (woodlark)
<i>Falco tinnunculus</i> (red-footed falcon)	<i>Anthus campestris</i> (tawny pipit)
<i>Pernis ptilorhynchus</i> (European honey buzzard)	<i>Caprimulgus europaeus</i> (European nightjar)
<i>Bubo bubo</i> (Eurasian eagle owl)	<i>Tringa glareola</i> (wood sandpiper)
<i>Ciconia ciconia</i> (white stork)	<i>Philomachus pugnax</i> (ruff)
<i>Ciconia nigra</i> (black stork)	<i>Branta ruficollis</i> (red-breasted goose)

Tab. 3: Some EU Habitats Directive and Berne Convention animal and plant species typically found in Romania's HNV farmland areas

Group	Species	Group	Species	
Plants	<i>Echium russicum</i>	Lepidoptera	<i>Callimorpha quadripunctaria</i> (Jersey tiger moth)*	
	<i>Crambe tataria</i>		<i>Catopta thrips</i>	
	<i>Cypripedium calceolus</i>		<i>Eriogaster catax</i>	
	<i>Angelica palustris</i>		<i>Euphydryas aurinia</i> (marsh fritillary)	
	<i>Iris aphylla</i>		<i>Euphydryas maturna</i> (scarce fritillary)	
	<i>Adenophora liliifolia</i>		<i>Leptidea morsei</i> (Fenton's wood white)	
Also:	<i>Cephalaria radiata</i> (endemic)		<i>Lycaena dispar</i> (large copper)	
	<i>Salvia transsylvanica</i> (end.)		<i>Maculinea teleius</i> (scarce large blue).	
Mammals	<i>Ursus arctos</i> *		Lepidoptera species protected under Berne Convention	
	<i>Lutra lutra</i>		<i>Proserpinus proserpina</i>	
	<i>Myotis myotis</i>	<i>Maculinea arion</i> (large blue)		
	<i>Barbastella barbastellus</i>	<i>Aricia eumedon</i> (geranium argus)		
Reptiles	<i>Lacerta agilis</i>	<i>Brenthis ino</i> (lesser marbled fritillary)		
	<i>Natrix natrix</i>	<i>Brenthis daphne</i> (marbled fritillary)		
	<i>Emys orbicularis</i>	<i>Brenthis euphrosyne</i> (pearl bordered fritillary)		
Amphibia	<i>Triturus cristatus</i>	<i>Lycaena alciphron</i> (purple shot copper)		
	<i>Rana dalmatina</i>	<i>Lycaena helle</i> (violet copper)		
	<i>Bombina variegata</i>	<i>Maculinea alcon</i> (alcon blue)		
	<i>Rana temporaria</i>	<i>Plebeius argus</i> (silver studded blue).		

How? ADEPT's integrated approach



- Even as a “small NGO”, and not a big public advisory service we need to connect/include ALL advisors in the AKIS (big and small, public or private).
- Advisors are the closest to farmers and most trusted.

How do we react based on our 5 principles as a regional advisory service?

See elements in green showcasing how

ADAPT advisory work is integrated within the AKIS

biodiversity conservation / landscape-scale approach 1

Inventory / long term monitoring of biodiversity and land-use with a view to give the right advice and to identify the needs of farmers; concrete interventions in different EU priority habitats; forest certification; identification of innovation / new extensive technology for land management, **advise on science based interventions and innovation.**

work with communities / multi stakeholder approach 2

multi stakeholder approach (also with bigger farmers, companies); **advice on RD measures: make biodiversity pay:** branding regions, products and services at local, regional and national level; **clarifying EU regulations; advice on hygiene regulation:** improving the market for milk by developing milk collection points, **milk hygiene trainings** and cow milk processing unit using minimum conditions for small-scale producers; **advice on farmers markets; developing efficient communication tools** (apps, SMS system, annual meetings, **developing new partnerships in our projects (innovation support service); advice on diversification:** mountain bike trails, linking producers and guest houses; **education useable for farmers, local community, school children and tourist (flyers, brochures, workshops, nature guides etc) advice on management of associations and producers groups** etc.

identify and protect hotspots / core areas **3**

through concrete interventions (grassland management, scrub removal, innovative grazing systems); **advice to groups: developing farmers action hub's to act together**, at landscape level, on land management and local infrastructure in the benefits of biodiversity and local economy.

influence and developing policy **4**

advisors also need to interact with policy because they have the field experience and the trust of the farmers, and know best the needs: we act as members in the Monitoring Committee, Thematic Advisory Board, technical working groups in the Ministry of Agriculture developing the new Strategic Plan 2021-2027 since 2007; we are members in EU level organizations (ex: EEB, ELO etc); developing new AE measures; LAG involvement; pilot RBAPS, etc

staff development and young professional building **5**

new business development: **training of advisors inside + outside ADEPT, teaching students, advice on farm management** on the Angofa farm model; ceramic center (**identification of retro-innovation**), etc

ADEPTs actions are based on:

- **impartiality, interaction, facilitation, innovation** support, **dissimination** of new knowlege, **practical science based approach, monitoring** of ecological and socio-economical **indicators**,
- **permanent consultation** with farmers, scientist, local business, etc

Balance and integrated approach brings diversification, economic vitality and beauty

Success is a series of small wins!



- Adapted policy keeps environment and economy balanced.
- Developing the ability of local communities to capitalize on opportunities.
- Connect/include ALL advisors in the AKIS (big and small, public or private).

Thank you!



EIP-AGRI seminar 'CAP Strategic Plans: the key role of AKIS in Member States'

Online 16-17-18 September 2020

All information of the seminar available on
www.eip-agri.eu

on the event webpage

<https://ec.europa.eu/eip/agriculture/en/event/eip-agri-seminar-cap-strategic-plans-key-role-akis>

