



eip-agri
AGRICULTURE & INNOVATION

Dr. John Gilliland
Devenish, Ireland



20-21 October 2020

EIP-AGRI Workshop Shaping the EU mission 'Caring for soil is caring for life'

The Devenish Lands at Dowth – The Irish Lighthouse Farm

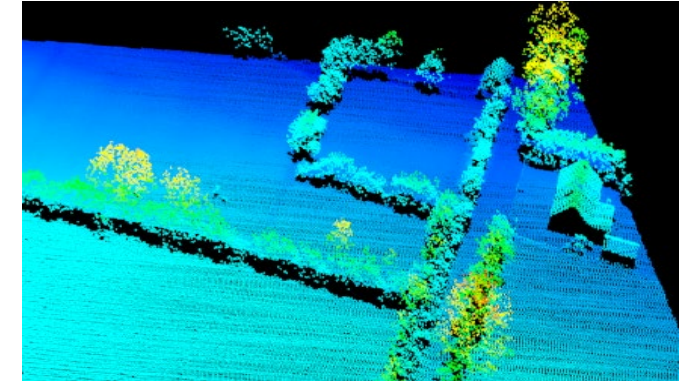
Delivering Carbon Neutral Beef & Lamb by 2025, while driving Profitability



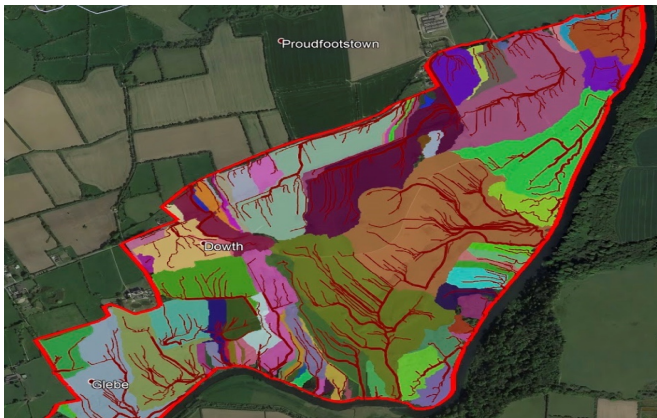
Purchased in 2013
185 ha, Grassland Farm



Delivering Soil Improvement
Fertility & Health



Measuring Carbon Sequestration,
Above & Below Ground



Reducing Over Land Flow
Nutrients & Soil



Optimising Biodiversity
Ireland's Top Mammal vis a vis Trees

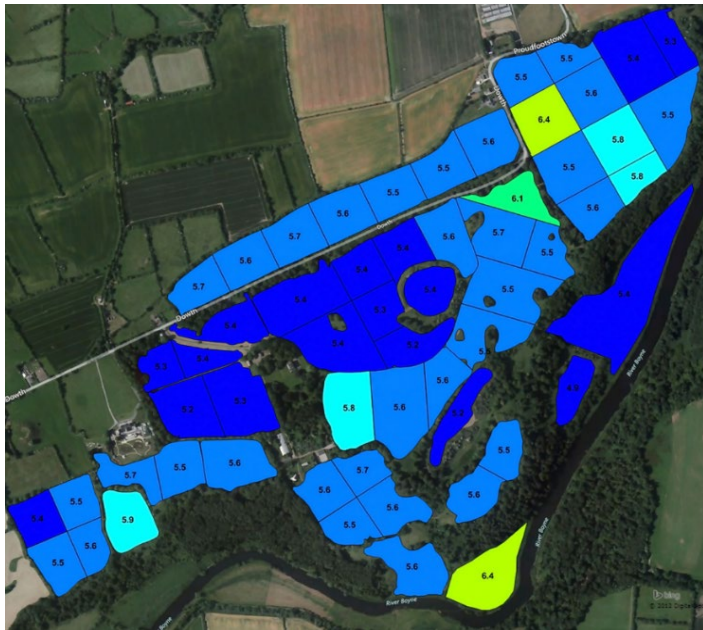


Managing UNESCO World Heritage
Site, 6,000 yrs of farming evolution

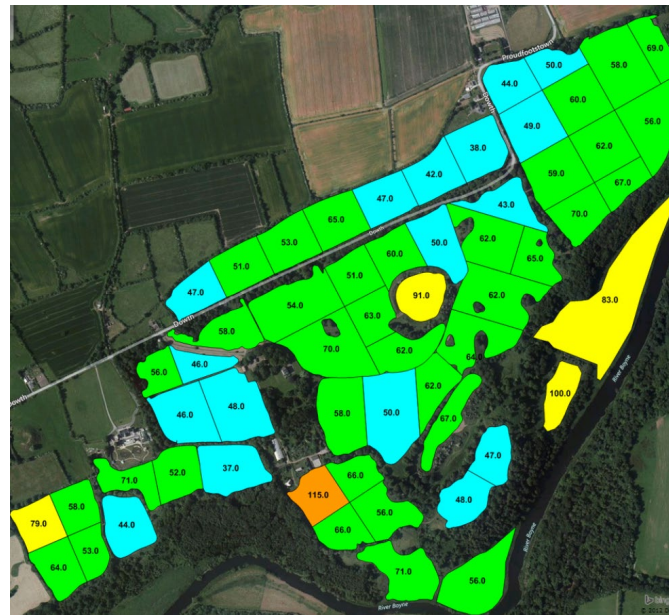
Created Robust GPS Baseline on Soil Fertility

25 soil cores from 2 ha, virtual land parcels, analysed

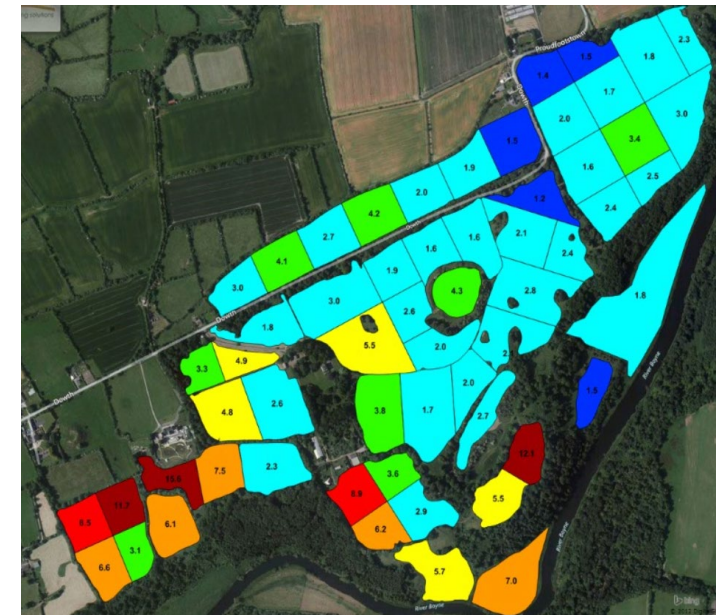
Feb. 2014
Average pH 5.5



Feb. 2014
Average K Index 2-



Feb. 2014
Average P Index 1+



Very poor soil fertility, after 40 years of neglect

Created Robust GPS Baseline on Soil Carbon

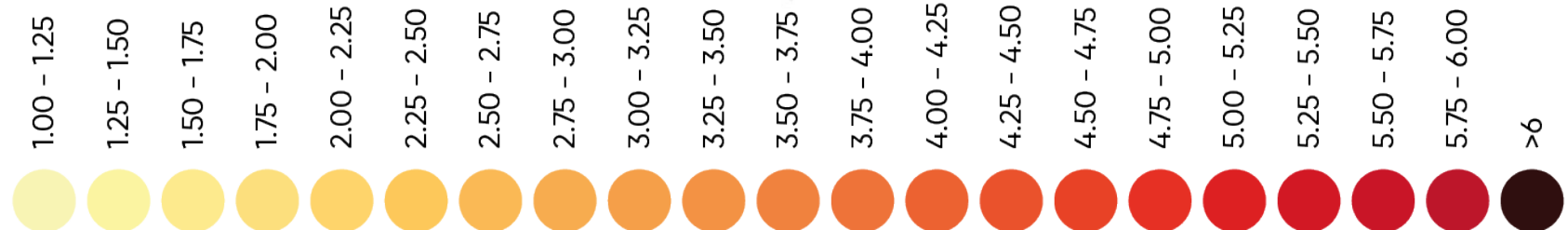
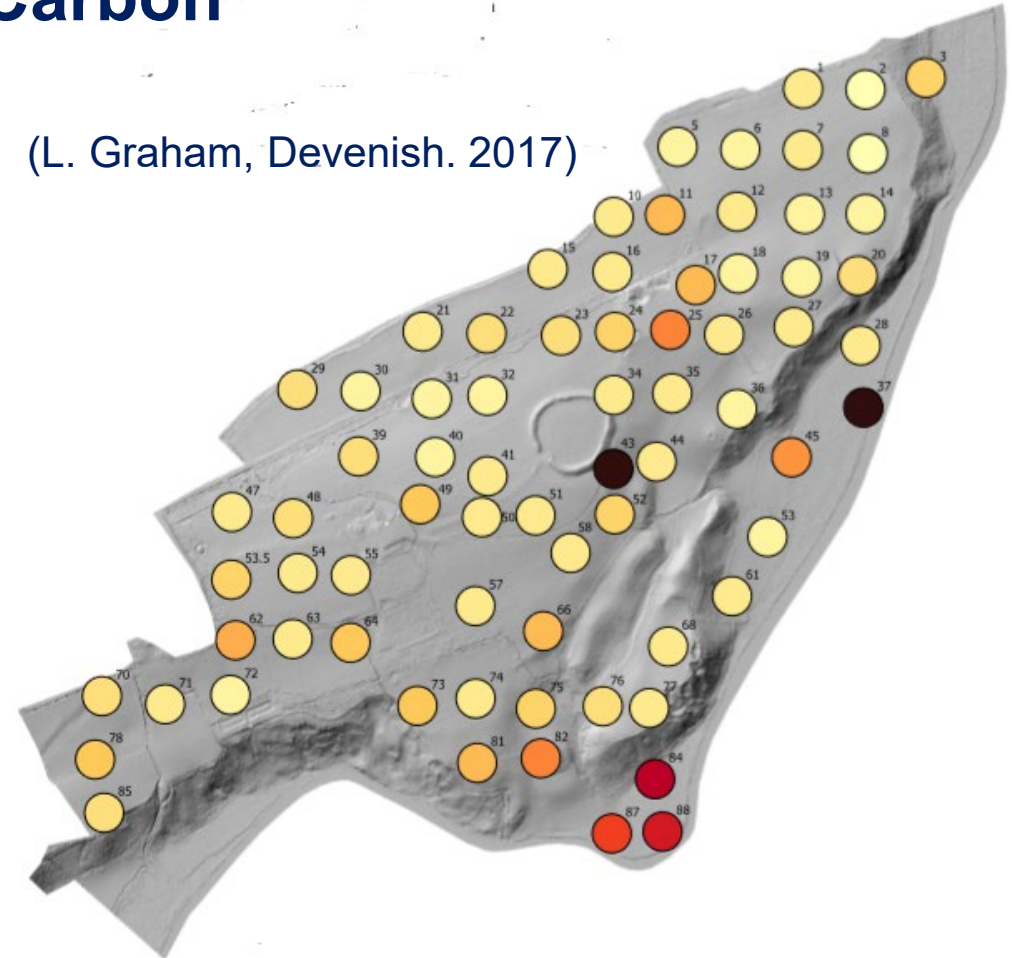
(L. Graham, Devenish. 2017)

Representative Sampling of Soils under Grass
Soil A Horizon sampled to 30cm in 88 soil pits

No ploughing for 40 Years
Some land never ploughed
Soil Type – Brown Earth

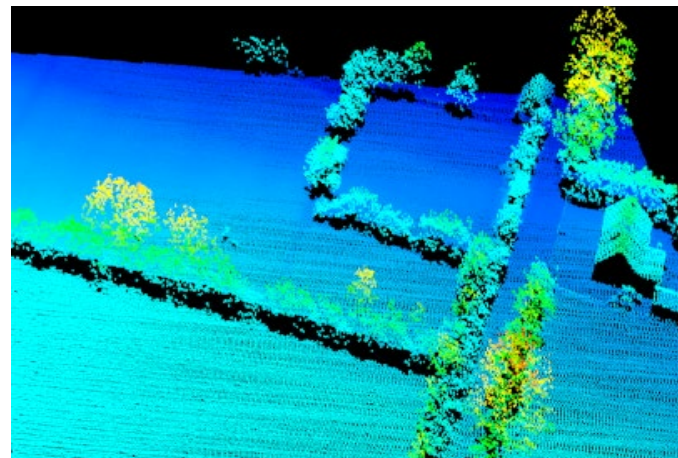
Average Soil Carbon - 2.1%
Expected Soil Carbon – 4 to 5%

Why the disparity in Soil Carbon Levels???



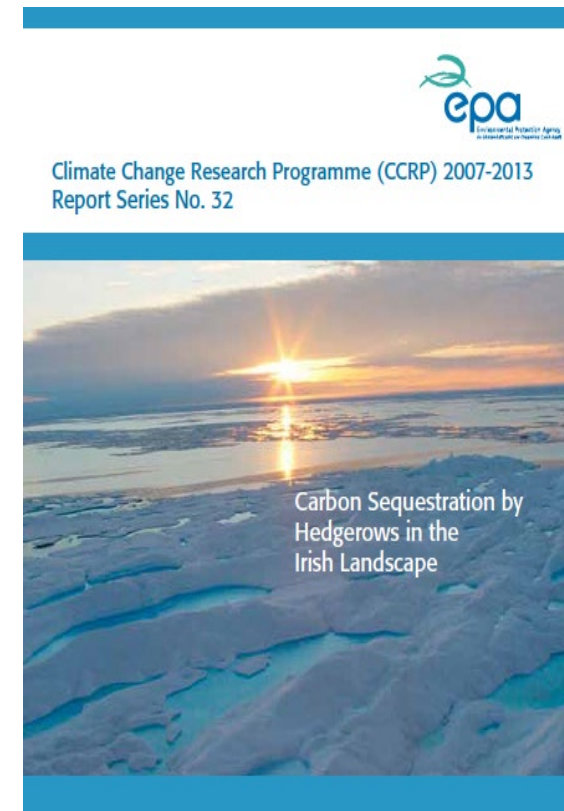
Created Robust GPS Baseline of Carbon in Trees & Hedges

Aerial LiDAR Survey to measure Biomass Density/Carbon



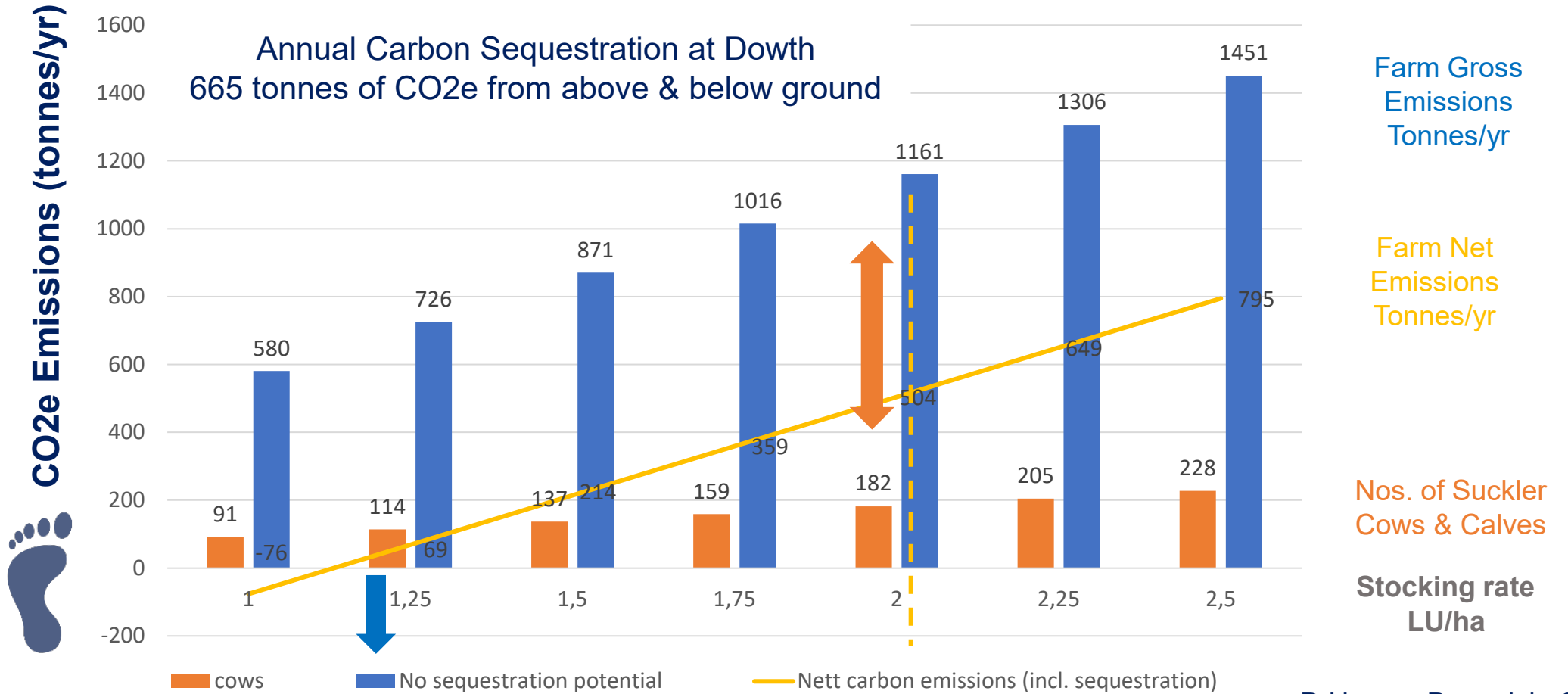
	Woods	Hedges	Total
Biomass Density (t C/ha)	83	127	86
Total Biomass in Dowth (t C)	3495	385	3880
Sequestration Potential for Dowth (t C/Yr)	50	1.2	51

S. Green, Teagasc, 2014



Sensitised “Net Farm” GHG Emissions to different Stocking Rates

Suckler Cows & Calves, Grazing System, on 91 ha of Grass, at Dowth



D.Hagan, Devenish, 2018

At Stocking Rate of 2 LU/ha
Dowth's Sequestration displaces 56% of all GHGs emitted by Cows & Calves

Accelerating Sequestration - Improving our Soils by correcting Soil pH

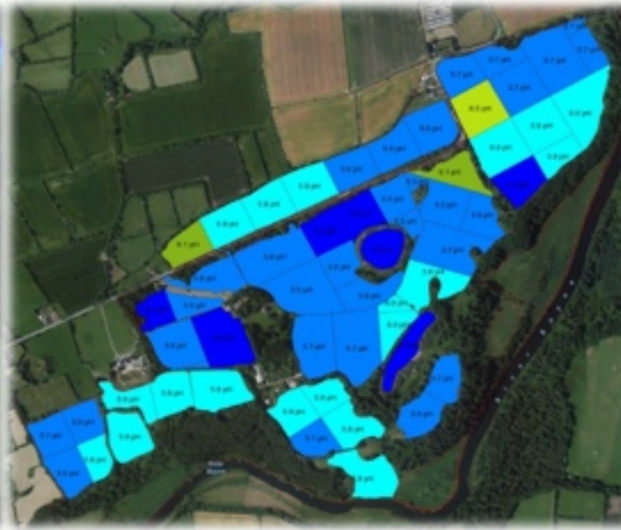
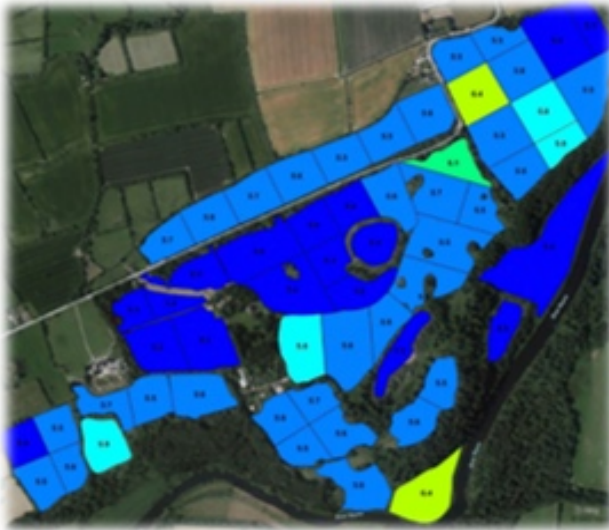
Through disciplined precision, GPS, Biennial, Soil Sampling & Analysis, every 2 Yrs

Feb. 2014
Average pH 5.5

Feb. 2016
Average pH 5.7

Feb. 2018
Average pH 6.1

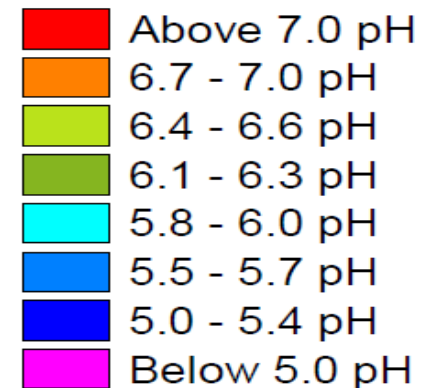
Feb 2020
Average pH 6.6



Delivered Credible Transparency of Soil Improvement through the use of regular Precision, GPS, Soil Sampling & Analysis

Dowth Soils now at Optimal pH after only six years!!

DEVENISH™
Beyond Nutrition



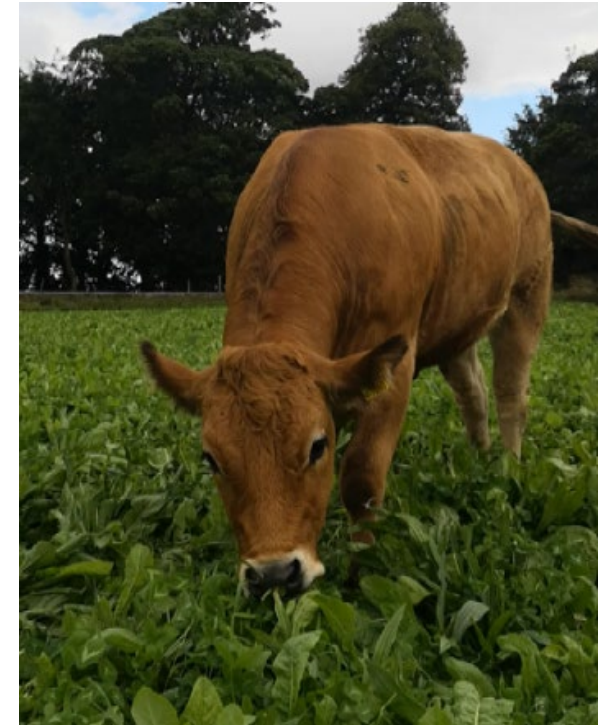
Accelerating Sequestration using our Multispecies Swards “Living Lab”



– An EU Marie Curie Award for the Optimisation of Multi Species Swards to improve Profits, Soil & Human Health, Simultaneously

- €1.4m Research Project
- Five PhD Researchers recruited
- 36 ha trials established
- 4 different Sward Compositions
- Co grazed with Cattle & Sheep

Partners:



Benefits of membership of the Global Network of Lighthouse Farms

Facilitated by Farming Systems Ecology Group, WUR, The Netherlands

- Learning & Sharing from each other, both from within & beyond the EU
- Inspiring Innovative impact by mixing Academia, Practitioners & Scientists



- Accelerating Positive Improvements through “farmer to farmer” learning
- Building Partnerships & developing Friendships

<https://www.lighthousefarmnetwork.com/>

EIP-AGRI workshop

Shaping the EU mission

'Caring for soil is caring for life'

Online 20-21 October 2020

All information of the workshop is available on
www.eip-agri.eu

on the event webpage
<https://ec.europa.eu/eip/agriculture/en/event/eip-agri-workshop-shaping-eu-mission-soil>

