



eip-agri
AGRICULTURE & INNOVATION

Alfred Grand

**Organic farmer, Vermigrand, Grand Farm
EU Mission Board on Soil Health and Food, Austria**



20-21 October 2020

EIP-AGRI Workshop Shaping the EU mission 'Caring for soil is caring for life'



HORIZON EUROPE PROPOSED MISSION

CARING FOR SOIL IS CARING FOR LIFE

Research and Innovation needs



Alfred Grand, Member of the Mission Board for Soil Health and Food.

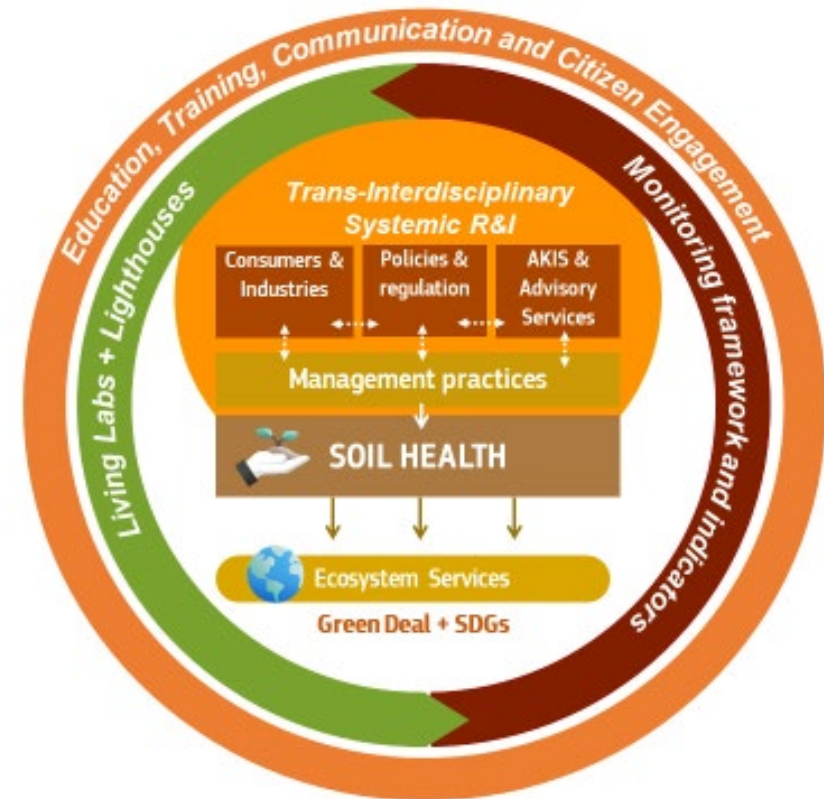
(Organic farmer and entrepreneur)

This presentation is delivered by a member of a Horizon Europe Mission Board, which is an informal group of experts set up by the European Commission to provide advice for the identification and implementation of missions in the future Horizon Europe programme. The contents of the presentation do not represent the official views of the European Commission nor do they constitute a commitment of any kind on its behalf.

Meet the mission building blocks:

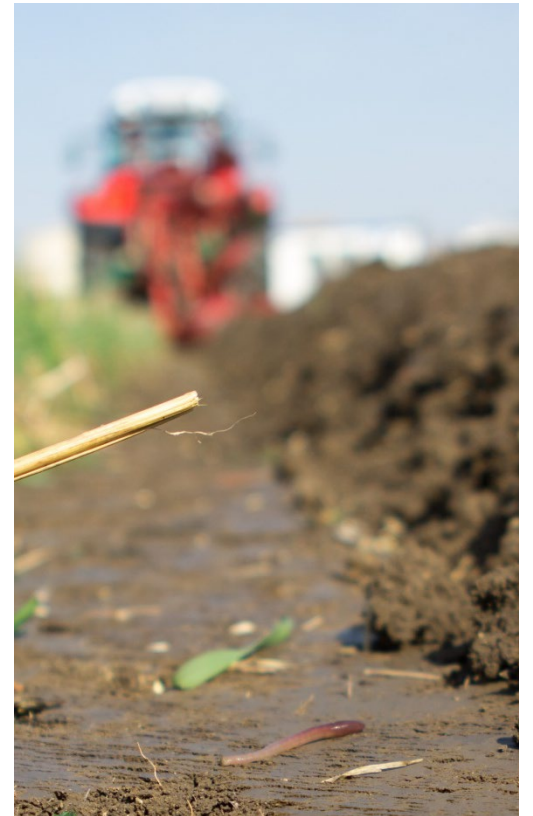
Mission has identified **building blocks** and **supporting actions** to support these activities:

1. A cross-scale, inter and transdisciplinary **R&I programme**;
2. Co-creation of knowledge and testing of solutions in **Living Laboratories and Lighthouses**;
3. A consistent set of 8 indicators in a robust **soil monitoring programme** at EU and MS level equivalent to that for air, water and biodiversity;
4. **Training, education, communication and citizen engagement** embedded in all activities



A lot has been done already!

Knowledge exists within individual disciplines but there is hardly any integrated knowledge on soil health combining insights from various disciplines and sectors.



Advocating for new approach

- **Systemic approaches**
- **Interdisciplinarity**
- **Transdisciplinarity**
- **Contextualization**
- **Societal support**
- **Cross-scale integration**



Committed to LL and LHs

The **LH** and **LL** will be the **key structures** to **identify research and innovation gaps, develop systems approaches and integrated disciplines, in cooperation with practitioners**, to find solutions that are ready to be used by other practitioners and communicated to citizens at large.

Majority of projects should use these structures, or collaborate with them.

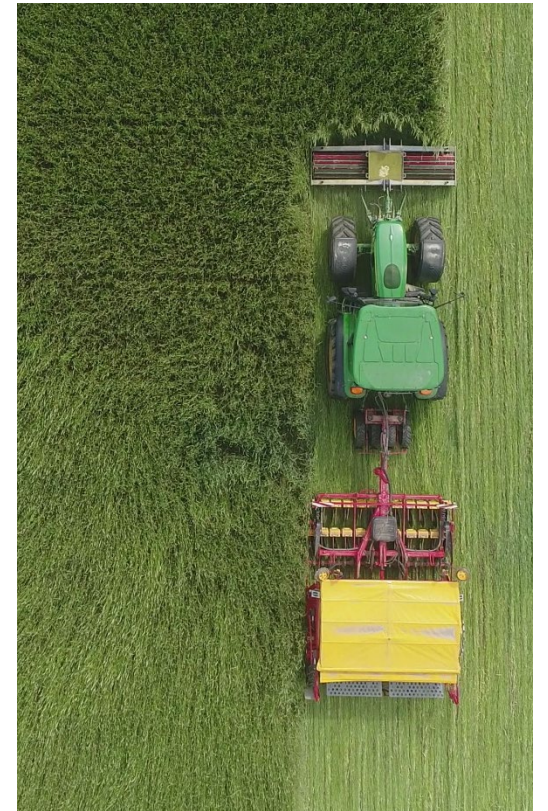
LLs and LHs are not the only approach to R&I, and therefore flexibility will be needed, e.g. when addressing trans-national and global research, EU level policies or soil health monitoring.



The two fundamental dimensions:

Research which is focused on **SOIL HEALTH**: what is a healthy soil and which indicators thresholds make sense in each context.

Research which addresses the **DRIVERS** of soil health: soil management and the drivers affecting this management, and requiring social sciences. It includes behaviour analysis of land managers, understanding the current barriers and opportunities which surround a system change, most efficient mechanisms to support transition to sustainable land use, adaptation of advisory services to different farm and forest structures and factors that lead to success of existing best practices.



Priorities for R&I:

P1: Integration and uptake of current knowledge

Data platforms

Link data

Identify mechanisms that constrain implementation

Promotion of implementation through Lighthouses

Improvement of extension and advisory services



Priorities for R&I:

P2: Accelerating Innovation in technologies and practices

Living labs, cocreation

New design of incentives, markets, financial, regulations and policy tools

Innovation in technological projects

Design new forms of collective actions at landscape scale



Priorities for R&I:

P3: Towards global resilience through circular economy and adaptation of food and biomass systems

Development of foot printing tools

Development of cooperation

Co-creation of new market mechanisms

Measuring the influences of agricultural practices

Promotion of shorter value chains and circular economy

Development of supportive policies and incentives

Create communication, engagement mechanisms

Co-design models towards more sustainable food production-consummation-waste production



Priorities for R&I:

P4: Next generation monitoring and surveillance programmes

Creation of pan-EU approach for setting standards for soil health

Improvement of national soil health monitoring

Provision of data into open data platforms

Modelling of platforms



What are your thoughts on the Research and Innovation needs for the Mission Soil health and food?



#MissionSoil
#EUmissions #HorizonEU

<http://ec.europa.eu/mission-soil>

Thank you!



Useful links

- **EU mission Caring for soil is caring for life (mission report)**

<https://op.europa.eu/en/publication-detail/-/publication/4ebd2586-fc85-11ea-b44f-01aa75ed71a1/language-en/format-PDF/source-159637857>

- **Video on the Mission on Soil health and food** https://www.youtube.com/watch?v=53bbzE2lpKc&feature=emb_logo

- **Mission report handover to the European Commission (EU R&I Days)**

<https://youtu.be/oAG5-CQIOoc>

- **Soil mission session (EU R&I Days)**

<https://research-innovation-days-conference.online/hubs/mission>

- **On a mission to save our soils - the EU's plan to rebuild the land (Futuris episode, euronews)**

<https://www.euronews.com/2020/09/21/on-a-mission-to-save-our-soils-the-eu-s-plan-to-rebuild-the-land>

EIP-AGRI workshop

Shaping the EU mission

'Caring for soil is caring for life'

Online 20-21 October 2020

All information of the workshop is available on
www.eip-agri.eu

on the event webpage
<https://ec.europa.eu/eip/agriculture/en/event/eip-agri-workshop-shaping-eu-mission-soil>

