

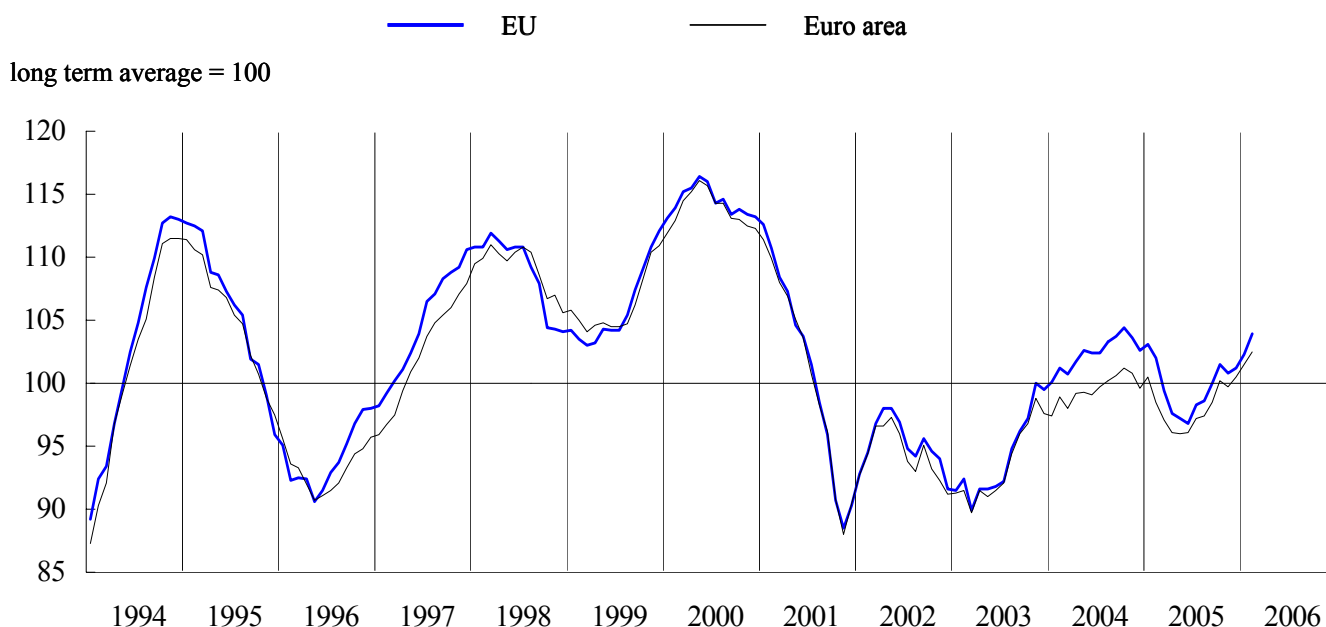


BUSINESS AND CONSUMER SURVEY RESULTS

February 2006

Next publication of Business and Consumer Survey Results scheduled for 31 March 2006
http://europa.eu.int/comm/economy_finance/indicators/businessandconsumersurveys_en.htm

GRAPH 1: Economic sentiment indicator (s.a.)



Economic sentiment continues to improve in both the EU and the euro area

The upward trend of the *Economic Sentiment Indicator (ESI)* that began in the summer of 2005 continued in February. Compared with January, the indicator improved by a robust 1.8 points in the EU and by 1.2 points in the euro area. In both areas, the indicator is now considerably above its long term average.

Developments in the sector-level confidence indicators were also predominantly positive. The EU registered a growth in confidence of 3 points in the *industry sector* and 1 point in both the *retail sector* and among *consumers*. In the *construction sector*, confidence remained unchanged. Only the *services sector* registered a slight fall in confidence. The euro area presents a very similar picture. At 2 points, the increase of confidence in the industry sector was slightly smaller than in the EU as a whole. Moreover, while EU construction confidence did not witness any change, builders in the euro area reported a small decline in confidence.

At the country level, the picture is mostly positive. All of the larger Member States reported an improvement in sentiment with the exception of *Spain*, where the ESI fell by more than 4 points. Developments in *Poland* and the *UK* are worth noting. The slight improvement of the indicator in Poland adds further to the record level reached in January. In the UK, the ESI picked up by more than 6 points after a four-consecutive-month decline. *Germany, France* and *Italy* saw further increases in the ESI of around 1 or 2 points.

Solid improvement of industrial confidence in both the EU and the euro area

In February, *industrial confidence* increased by 3 points in the EU and by 2 points in the euro area. These developments extend the gradual upward trend the indicator has been following since the second quarter of 2005.

The positive development of the confidence indicator in the EU was reflected in all of its underlying components. The strongest improvements were observed in the assessment of *order books* and the *stock of finished products*. Industrial managers were also more optimistic with regard to their *production expectations*. The picture for the euro area is very similar, with all three components showing improvements of 1 or 2 points.

At the individual country level, the picture is more mixed. Of the larger Member States, *Italy* and *Poland* saw a small fall in confidence. In the other large Member States, industrial managers were more optimistic. Among the cases worth noting are *France* with +3 points and the *UK*, where the indicator increased by 7 points.

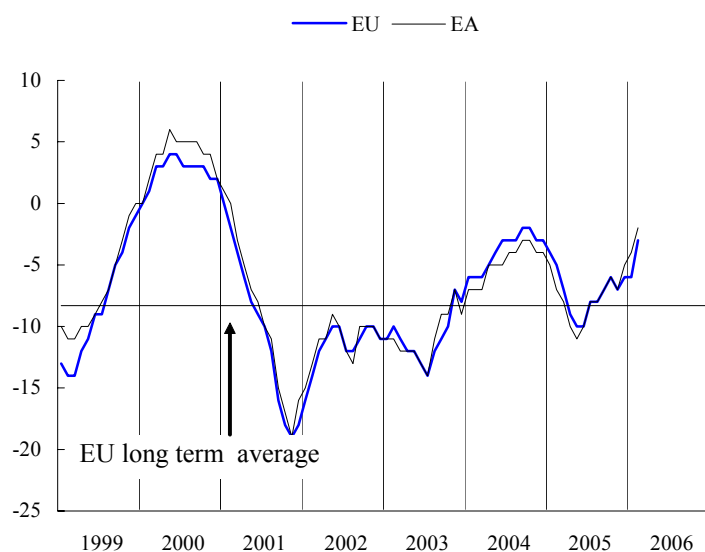
Services confidence slightly down in both the EU and the euro area

After the increase in January, confidence in the services sector fell by 1 point in both the EU and the euro area. Since the end of 2003, the indicator has been fluctuating quite erratically within a range of 8 to 15 points, without revealing a clear trend.

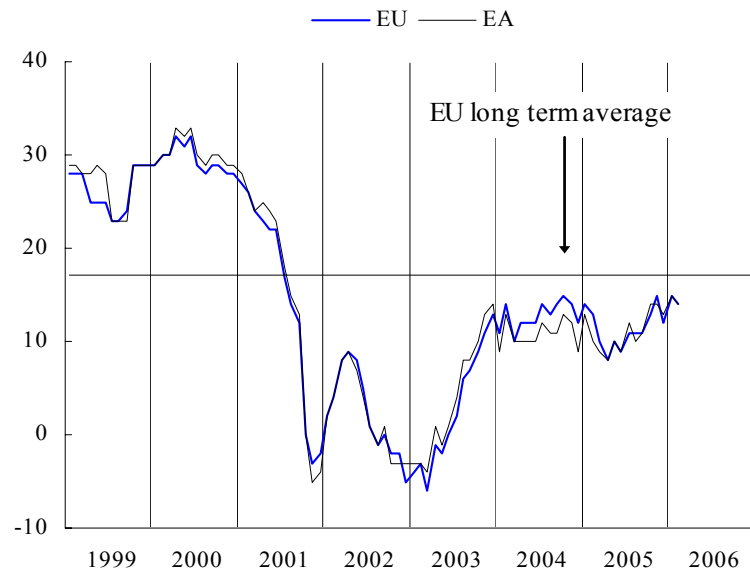
Among the three underlying components of the confidence indicator, setbacks in the assessment of the *current business situation* and the *evolution of demand in recent months* were behind the overall decline of confidence in the EU. The strong improvement in the *expected evolution of demand* could not compensate for the fall in these two components. However, the distinct improvement in expectations about future demand may foreshadow a pick up of confidence in the months to come.

At the country level, *France* and the *UK* saw a rise in confidence. In *Spain*, on the other hand, confidence in services plunged by 13 points and is now at the lowest level since it was first calculated in October 1996. While the *German* indicator recorded a negative two points, services confidence was stable in *Italy*.

GRAPH 2a: Industrial confidence indicator



GRAPH 3: Services confidence indicator



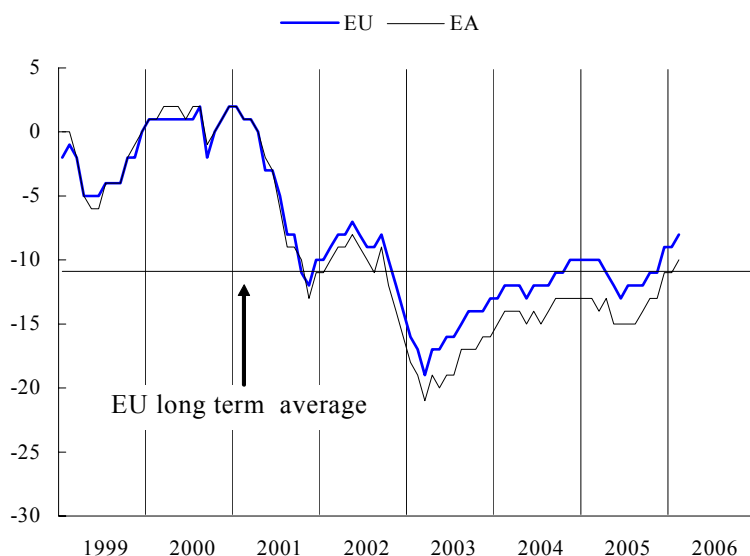
Consumers slightly more confident in both the EU and the euro area

Consumer confidence improved slightly in both the EU and the euro area. After the temporary dip during the first half of 2005, the indicators now appear to be regaining the upward trend that started at the beginning of 2003.

The growth of confidence in the EU was due to more positive expectations of consumers with regard to the *general economic situation* and their *savings*. Expectations concerning their own *financial situation* and the *unemployment situation* remained unchanged.

At the country level, developments were generally positive. Of the larger Member States, only *Germany* and *Spain* saw a small decline in confidence among their consumers. *France*, *Poland* and the *UK* reported improvements in consumer confidence of 2 points, while Italy saw a considerable increase of 4 points. In Poland, the confidence indicator reached a record high.

GRAPH 4: Consumer confidence indicator

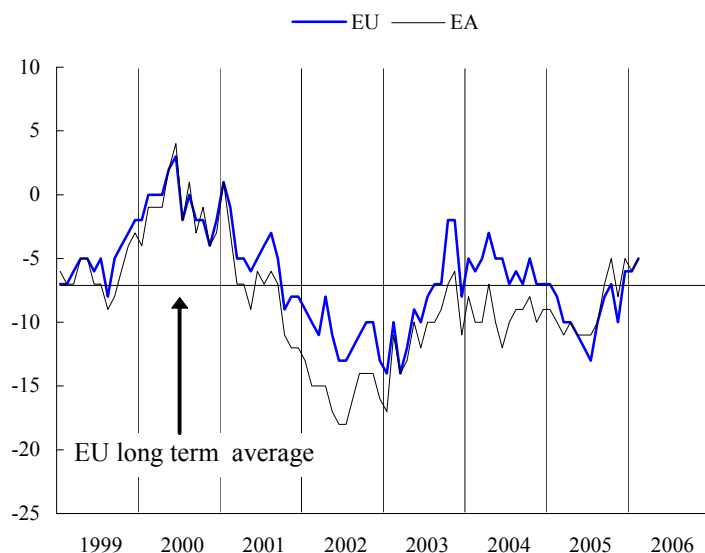


Further improvement of retail confidence in the EU and the euro area

Having remained stable in January, *retail confidence* rose by 1 point in the EU in February. The indicator has thus extended the upward trend that started during the summer of 2005. In the euro area, retail confidence also improved by 1 point. After last month's analogous decline, the indicator thus regained the relatively high level reached in December and October of last year.

The rise in overall confidence in the EU was due to a more positive assessment by retailers of both the *present business situation* and the *expected business situation*. Views concerning the *volume of stocks* remained unchanged among EU retailers. The improvement in the euro area was mainly driven by distinctly brighter *expectations regarding the business situation*.

GRAPH 5: Retail confidence indicator



Among the larger Member States, a rather divergent picture emerges. *Italian* retailers reported a drop in confidence of a full 8 points, while *Germany* registered a surge of retail confidence of 7 points. German confidence is now above its long term average for the first time since the summer of 2001.

Construction confidence fairly stable

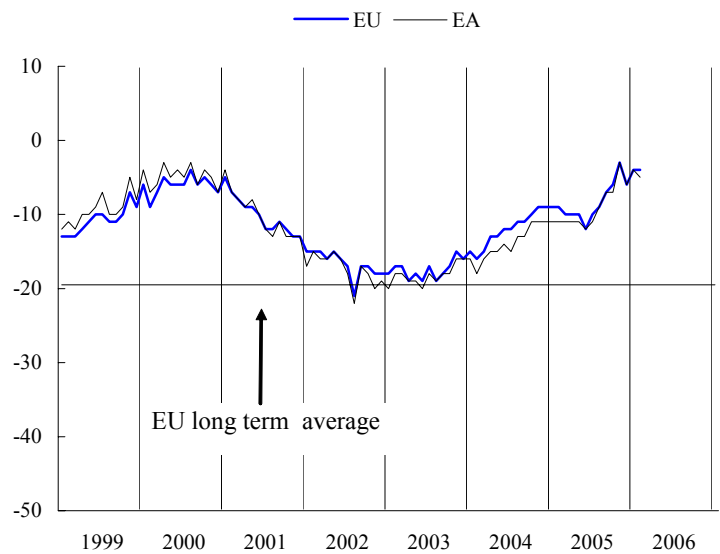
After the increase of 2 points in January, the *construction confidence* indicator in the EU did not change in February. Builders in the euro area reported a slight drop in confidence of 1 point. These developments are in line with the broadly upward path that both indicators have been following since the second half of 2003.

Looking at the underlying components, builders in both the EU and the euro area held more negative views of their *order books* compared to January. With regard to *employment expectations*, construction managers in the EU did not change their views, while those in the euro area were slightly more optimistic.

At the country level, developments in *Spain*

stand out. After having reached a peak of 39 points in November last year, confidence has fallen sharply since then; it now stands at 6 points, after a fall of 15 points in February. In *Germany*, confidence has recovered steadily over the last twelve months. In February, the indicator increased by another 4 points.

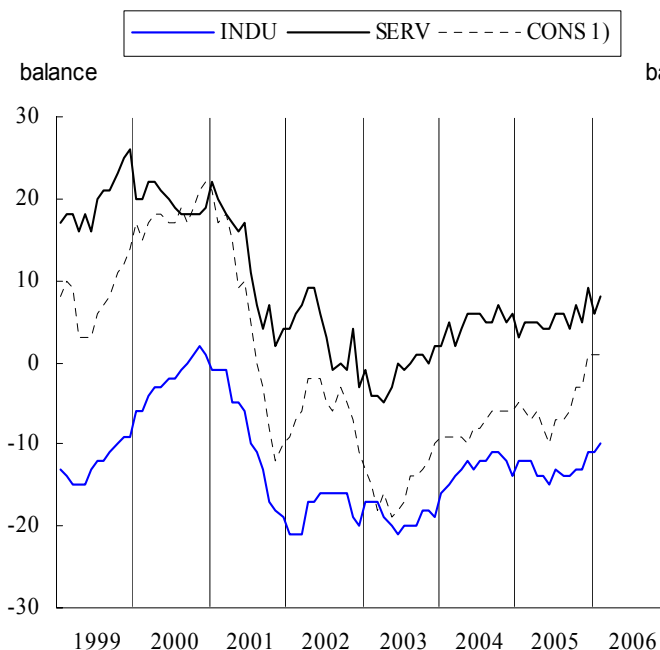
GRAPH 6: Construction confidence indicator



Employment, unemployment and price expectations in the EU

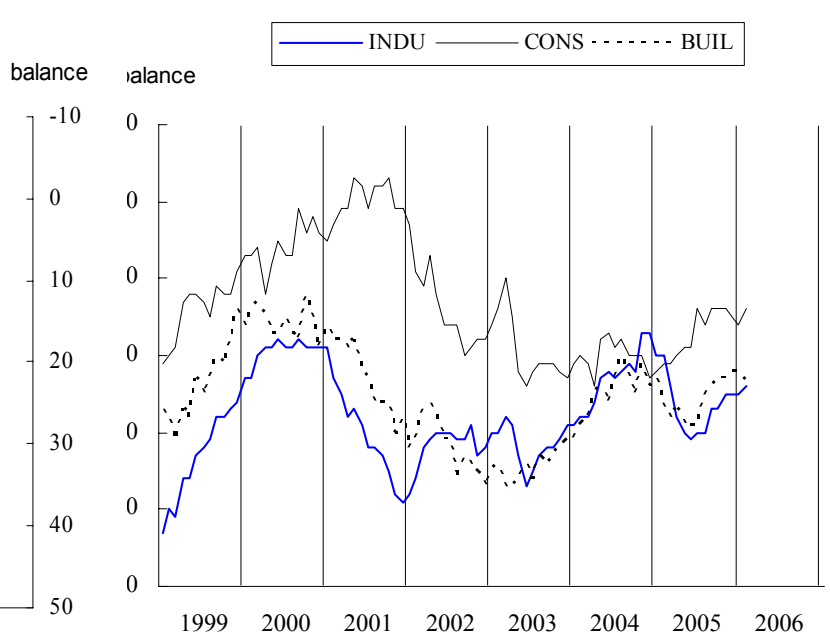
Employment expectations presented a more positive picture in February. Managers in both the services sector and the industry sector were more optimistic about their employment expectations. Consumers did not alter their expectations compared to last month. The picture with regard to *price expectations* is mixed. Consumers and industry managers foresee upward pressure on prices. Construction managers, on the other hand, have adjusted their price expectations downwards.

GRAPH 7: Employment and unemployment



1) Unemployment expectations (Right Hand Scale)

GRAPH 8: Price expectations



Results of the World Economic Survey

In January 2006, the IFO institute, in co-operation with the European Commission, carried out the latest **World Economic Survey (WES)**. Through interviews with 1,080 economic experts, the national economic trends in 90 countries were evaluated. This allows for an up-to-date aggregate assessment of the economic situation prevailing around the world (see Graphs 9 to 11). The previous survey was conducted in October of last year.

Concerning the *world economy*, a majority of experts world-wide considered that the *present economic situation* had improved for a second quarter in a row. Experts' *expectations for the next 6 months* were considerably more positive than in the previous quarter, after having held more or less stable expectations since the last quarter of 2004.

At the national level, experts in the USA adjusted their views on the present economic situation slightly upwards. Furthermore, they also expect a small improvement of the *economic situation in the next six months*. The assessments made by economic experts in the EU, concerning both the *present economic situation* and the *expectations for the next 6 months*, have also become more optimistic.

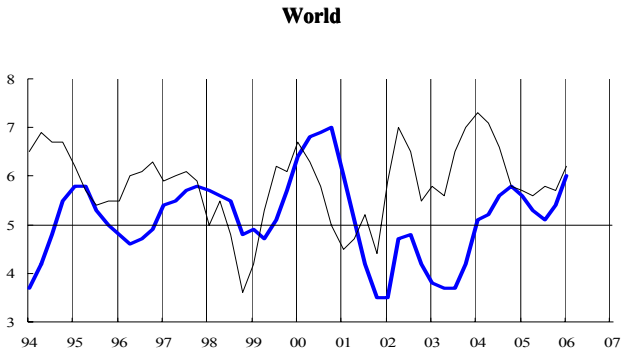
The views on *trade expectations* differed between experts in the EU and in the USA. In the EU, *export expectations* increased slightly, while *import expectations* remained unchanged. US experts, on the other hand, expect a strong increase in imports while their export expectations barely changed.

Views about the *evaluation of currencies* show that experts world-wide, as well as in the EU, feel that both the US dollar and the euro are fairly close to their appropriate values. The perception of a remaining slight overvaluation in the case of the euro comes after a period of nearly three years where experts world-wide regarded the euro as clearly overvalued vis-à-vis the average of the other currencies covered in the survey panel. As to the US dollar, it is now regarded as slightly overvalued, after having been seen as undervalued for more than two years by the WES experts.

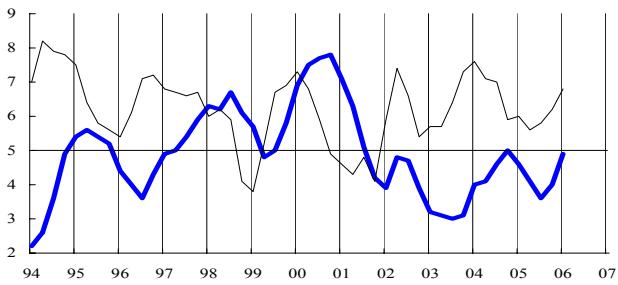
GRAPHS 9 - 10: "World economic survey: January results" (*)

Graph 9: Current economic situation and expectations for the next six months

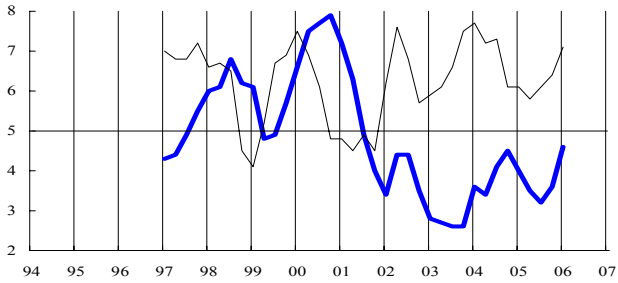
— Current economic situation — Expectations for next 6 months



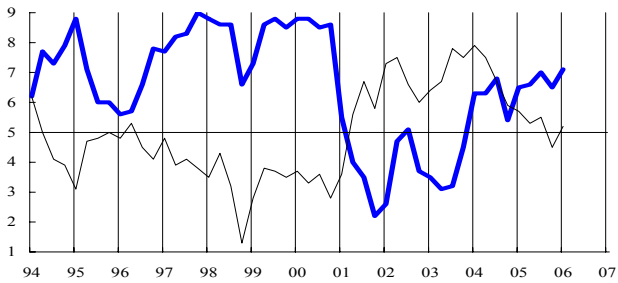
EU



Euro area

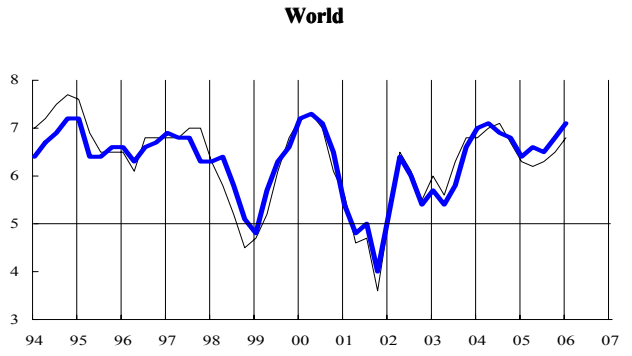


USA

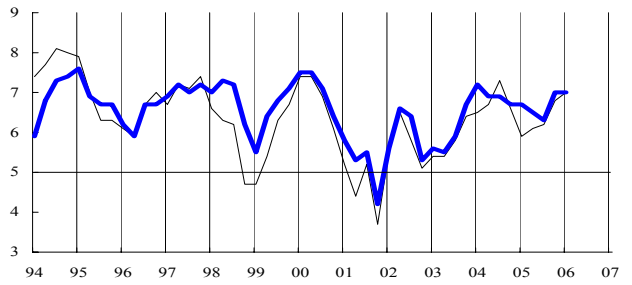


Graph 10: Import and export expectations for the next 6 months

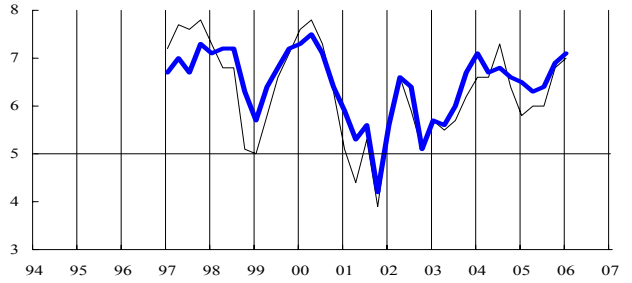
— Import expectations — Export expectations



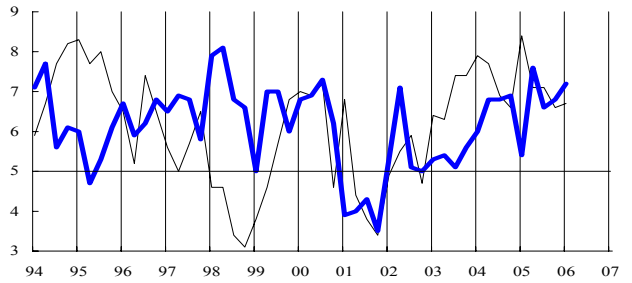
EU



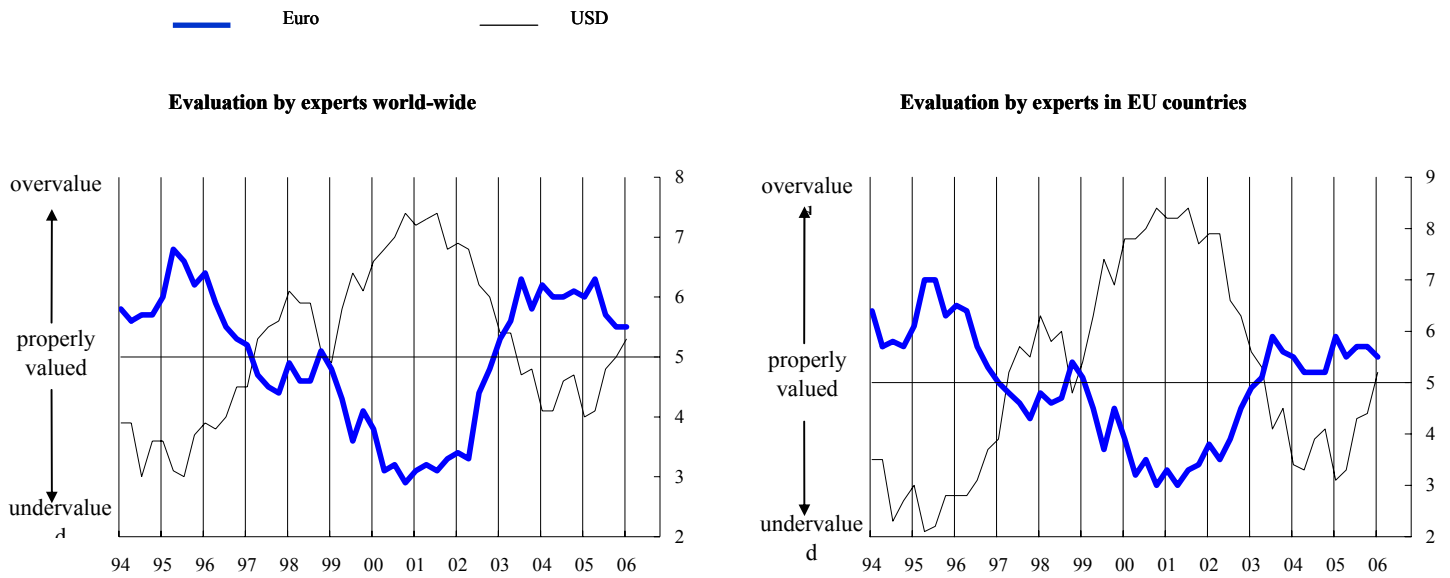
Euro area



USA



Graph 11: Evaluation of currencies



(*) The World Economic survey is conducted by the IFO Institute on behalf of the European Commission 4 times per year (January, April, July, October) and is based on the answers of approximately 1.100 experts in more than 90 countries. The replies are 'graded': positive responses (+) receive a grade of 9, indifferent ones (=) a grade of 5, and negative ones (-) a grade of 1. Grades between 5 and 9 imply a preponderance of positive replies or increases, while grades between 1 and 5 indicate that negative replies or decreases dominate.

TABLE 1*: Indicators of confidence and economic sentiment(s.a.)		Since 01/1990 ¹⁾																			
							2005										2006				
		Min.		Ave.	Max.		Mar.	Apr.	May	June	July	Aug.	Sep.	Oct.	Nov	Dec.	Jan.	Feb.			
		Value	Date	Value	Date																
EU	1. Industry	-28	11-92	-8	7	12-94	-7	-9	-10	-10	-8	-8	-7	-6	-7	-6	-6	-3			
	2. Services	-6	03-03	17	32	08-98	10	8	10	9	11	11	11	13	15	12	15	14			
	3. Consumer	-27	03-93	-11	2	12-00	-10	-11	-12	-13	-12	-12	-12	-11	-11	-9	-9	-8			
	4. Retail trade	-20	01-93	-7	4	07-90	-10	-10	-11	-12	-13	-10	-8	-7	-10	-6	-6	-5			
	5. Construction	-42	10-93	-20	3	02-90	-10	-10	-10	-12	-10	-9	-7	-6	-3	-6	-4	-4			
	=6. ESI	76.6	06-93	100.0	116.2	05-00	99.4	97.6	97.2	96.8	98.3	98.6	100.0	101.5	100.8	101.2	102.3	104.1			
Euro area	1. Industry	-31	07-93	-8	6	05-00	-8	-10	-11	-10	-8	-8	-7	-6	-7	-5	-4	-2			
	2. Services	-5	11-01	18	34	08-98	9	8	10	9	12	10	11	14	14	13	15	14			
	3. Consumer	-29	07-93	-12	2	05-00	-14	-13	-15	-15	-15	-15	-14	-13	-13	-11	-11	-10			
	4. Retail trade	-23	01-93	-9	8	08-90	-11	-10	-11	-11	-11	-10	-7	-5	-8	-5	-6	-5			
	5. Construction	-43	10-93	-19	4	03-90	-11	-11	-11	-12	-11	-9	-7	-7	-3	-6	-4	-5			
	=6. ESI	76.1	06-93	100.0	115.9	05-00	97.1	96.1	96.0	96.1	97.2	97.4	98.5	100.2	99.7	100.5	101.5	102.7			
BE	1. Industry	-33	04-93	-11	5	06-00	-7	-11	-13	-13	-13	-12	-11	-6	-4	-4	-5	-2			
	2. Services	-7	03-03	13	33	03-98	11	12	3	9	6	5	14	14	11	14	28	11			
	3. Consumer	-27	08-93	-6	17	12-00	-1	-4	-11	-11	-11	-10	-14	-6	-9	-6	-4	-5			
	4. Retail trade	-25	05-93	-6	13	04-90	-10	-4	-10	-7	-10	-8	-9	0	-7	-4	-5	-2			
	5. Construction	-35	11-95	-12	10	02-00	-4	-6	-5	-6	-5	-6	-4	-3	-1	-3	1	0			
	=6. ESI	77.0	04-93	100.0	120.2	06-00	104.3	101.3	95.6	98.6	96.5	97.5	99.9	105.0	103.3	106.0	110.7	105.8			
CZ	1. Industry	-31	03-99	0	27	06-00	7	5	4	5	7	6	6	10	9	8	8	6			
	2. Services	32	06-05	40	47	07-02	38	37	37	32	32	37	40	38	34	41	43	43			
	3. Consumer	-36	03-98	-15	3	02-06	-2	-6	-3	-2	-2	-4	0	-1	2	-1	3	3			
	4. Retail trade	-1	02-99	14	26	08-02	19	14	15	16	16	15	19	20	24	22	15	21			
	5. Construction	-64	06-99	-17	3	06-95	-7	-9	-8	-10	-7	-7	-1	0	-2	-8	-9	-7			
	=6. ESI	69.6	03-99	100.0	117.6	04-01	106.5	102.0	103.2	98.5	100.3	103.6	109.5	108.2	105.8	110.5	112.8	113.8			
DK	1. Industry	-26	12-98	-2	16	09-94	1	-5	0	-2	-4	2	0	3	3	1	4	4			
	2. Services	11	10-01	26	37	04-04	34	33	34	32	29	31	33	31	33	35	34	32			
	3. Consumer	-11	10-90	7	18	01-06	17	14	14	14	13	13	15	16	17	18	18	16			
	4. Retail trade	-6	10-01	17	37	11-94	31	29	28	25	26	27	26	27	25	29	25	26			
	5. Construction	-37	12-91	-8	21	01-06	3	5	8	6	5	3	5	14	16	18	21	20			
	=6. ESI	74.5	12-98	100.0	121.2	09-94	114.7	109.3	113.5	110.3	105.2	111.9	111.5	112.5	114.1	114.0	115.3	114.4			
DE	1. Industry	-35	04-93	-11	11	09-90	-11	-13	-13	-13	-12	-11	-9	-8	-9	-7	-5	-3			
	2. Services	-18	12-02	25	52	03-99	5	3	9	8	11	10	10	11	10	12	18	16			
	3. Consumer	-28	10-93	-11	6	05-00	-18	-15	-14	-15	-17	-15	-14	-11	-12	-8	-6	-7			
	4. Retail trade	-41	01-03	-17	19	12-90	-33	-29	-31	-26	-28	-28	-24	-23	-29	-26	-23	-16			
	5. Construction	-55	12-02	-35	2	02-90	-48	-45	-42	-44	-42	-41	-37	-35	-35	-36	-33	-29			
	=6. ESI	81.0	07-93	100.0	120.3	09-90	92.8	92.6	93.3	93.1	93.8	94.7	95.6	96.9	95.9	97.8	100.3	101.5			
EE	1. Industry	-31	07-92	5	21	12-05	17	13	15	11	12	15	13	19	17	21	14	13			
	2. Services	5	11-04	24	40	01-06	20	23	23	27	31	23	26	25	31	34	40	29			
	3. Consumer	-56	04-93	-22	9	01-06	-5	-8	-8	-6	-2	-4	-10	1	3	7	9	9			
	4. Retail trade	-1	04-03	18	30	04-04	22	25	22	22	28	21	22	24	23	26	26	25			
	5. Construction	-46	12-99	4	46	12-05	31	32	33	30	29	33	27	29	38	46	45	45			
	=6. ESI	70.6	07-92	100.0	126.0	01-06	110.4	110.2	111.0	113.2	117.5	111.4	111.1	115.5	119.6	125.3	126.0	117.7			
EL	1. Industry	-12	09-90	0	13	03-00	-7	-4	-9	-10	-10	-8	-6	-6	-2	-1	-1				
	2. Services	-14	04-03	26	62	08-00	23	22	16	11	10	12	13	21	20	14	13	15			
	3. Consumer	-44	07-03	-30	-6	04-00	-33	-35	-31	-36	-32	-33	-35	-37	-36	-36	-31	-36			
	4. Retail trade	-24	06-95	2	27	03-04	9	10	4	2	-1	1	5	5	4	12	11	19			
	5. Construction	-53	03-05	-12	33	04-00	-53	-48	-31	-38	-49	-47	-45	-40	-36	-34	-30	-22			
	=6. ESI	78.9	09-90	100.0	128.1	07-00	90.0	91.4	86.5	83.3	84.2	86.4	88.6	88.8	88.7	92.1	93.9	94.5			
ES	1. Industry	-44	01-93	-9	7	04-00	-4	-6	-7	-8	-5	-5	-4	-5	-5	-3	-7	-6			
	2. Services	5	02-06	30	56	06-98	14	17	28	26	21	23	19	19	22	24	18	5			
	3. Consumer	-37	10-92	-11	6	03-00	-10	-11	-11	-12	-11	-12	-11	-11	-13	-10	-12	-13			
	4. Retail trade	-36	02-93	-7	10	06-00	-7	-2	-1	-6	-4	-4	-5	-4	-3	-5	-10	-13			
	5. Construction	-57	10-92	-2	42	01-99	28	20	15	10	17	25	26	23	39	23	21	6			
	=6. ESI	69.9	01-93	100.0	116.7	04-00	97.5	97.7	101.0	98.7	98.1	98.9	98.2	98.6	99.2	101.1	95.4	91.2			
FR	1. Industry	-41	06-93	-8	15	06-00	-9	-10	-12	-9	-8	-8	-9	-7	-9	-6	-7	-4			
	2. Services	-22	06-93	3	25	06-90	8	6	7	10	11	10	10	11	10	7	9	11			
	3. Consumer	-34	08-93	-18	4	01-01	-14	-17	-21	-17	-16	-15	-13	-15	-16	-16	-15	-13			
	4. Retail trade	-37	04-97	-16	6	10-04	0	1	-3	-5	-11	-9	-6	-5	-3	0	-10	-9			
	5. Construction	-60	03-93	-16	34	10-00	11	8	7	5	9	7	8	12	13	10	15	16			
	=6. ESI	75.1	06-93	100.0	119.1	04-00	104.8	102.3	101.1	104.2	104.9	105.4	105.6	105.2	103.8	104.1	104.4	106.6			
IE	1. Industry	-23	11-01	-2	21	11-99	0	-2	-8	-2	3	-4	-4	-11	-3	-5	-6	0			
	2. Services	-14	05-03	16	44	08-98	-4	9	-2	-12	7	-6	-2	10	16	19	18	15			
	3. Consumer	-31	03-93	-4	19	01-00	7	1	-1	1	4	1	-4	-3	1	3	4	4			
	4. Retail trade	-21	05-03	3	24	06-00	-3	-11	-8	-1	-5	2	-10	-7	0	0	-2	-3			
	5. Construction	-54	09-02	10	58	06-97	27	29	15	45	34	20	28	24	31	13	13	0			
	=6. ESI	79.2	06-93	100.0	122.4	11-99	98.2	98.6	91.1	95.1	100.4	94.4	93.5	94.1	100.7	100.1	99.2	100.6			
IT	1. Industry	-22	04-93	-4	13	07-95	-7	-7	-9	-9	-6	-4	-3	-3	-3	-1	1	0			
	2. Services	-5	11-01	17	44	02-98	16	12	10	-1	11	0	14	23	28	19	19	19			
	3. Consumer	-38	04-93	-13	2	06-01	-18	-16	-17	-19	-21	-21	-21	-20	-17	-17	-19	-15			
	4. Retail trade	-19	10-96	8	39	10-95	12	3	13	6	16	19	24	30	22	26	27	19			
	5. Construction	-68	10-93	-13	21	05-90	-5	-3	-1	-5	-8	-3	-5	-10	-6	-2	3	0			
	=6. ESI	73.0	04-93	100.0	118.9	02-95	96.3	96.0	95.6	92.7	95.9	93.6	98.1	101.9	103.8	102.7	104.0	104.9			
CY	1. Industry	-9	04-03	3	13	04-02	6	3	5	0	3	0	1	-1	-3	-1	1	1			
	2. Services	-21	09-02	5	19	06-05	18	15	7	19	15	10	4	3	14	3	6	19			
	3. Consumer	-43	07-04	-30	-13	06-01															

TABLE 1* (continued) : Indicators of confidence and economic sentiment (s.a.)

		Since 01/1990 ^(*)																
		Min.		Ave.	Max.		2005										2006	
		Value	Date		Value	Date	Mar.	Apr.	May	June	July	Aug.	Sep.	Oct.	Nov.	Dec.	Jan.	Feb.
LT	1. Industry	-37	11-98	-14	5	10-05	-3	-4	-8	-2	4	-3	4	5	1	4	4	4
	2. Services	9	04-05	19	33	11-05	12	9	16	16	25	17	23	28	33	27	32	29
	3. Consumer	-32	05-01	-13	-1	10-04	-5	-1	-4	-3	-4	-6	-7	-5	-1	-2	-2	-1
	4. Retail trade	-25	09-00	-4	26	06-04	-5	-1	3	7	14	13	12	13	17	15	17	14
	5. Construction	-76	09-00	-39	7	12-05	-2	-22	-11	-4	1	1	2	1	7	7	6	-1
	=6. ESI	74.8	11-98	100.0	137.3	11-05	115.6	115.9	115.6	121.4	131.6	121.0	127.9	133.6	137.3	134.0	137.0	136.3
LU	1. Industry	-35	05-92	-10	26	04-95	2	-9	-18	-17	-20	-21	-18	-10	-9	-4	-5	-11
	2. Services
	3. Consumer	-4	09-05	3	14	02-02	4	3	2	-2	0	-1	-4	-1	1	-1	2	-1
	4. Retail trade
	5. Construction	-73	03-94	-26	24	03-90	-29	-20	-21	-26	-33	-26	-32	-22	-20	-22	-19	-27
	=6. ESI	82.9	06-96	100.0	123.1	04-95	106.2	98.9	93.9	94.3	91.2	92.6	90.8	97.5	98.5	100.0	101.7	95.6
HU	1. Industry	-15	05-99	-3	8	12-97	-12	-14	-14	-12	-11	-10	-6	-5	-6	-3	-3	-3
	2. Services	-11	10-04	1	14	03-02	-5	-7	-3	-7	-3	-1	0	3	2	-7	5	1
	3. Consumer	-58	04-95	-28	0	08-02	-24	-28	-30	-32	-27	-26	-24	-26	-21	-17	-15	-10
	4. Retail trade	-28	05-05	-8	9	11-97	-28	-24	-28	-25	-17	-26	-13	-12	-12	-12	-13	-14
	5. Construction	-24	12-04	-8	11	09-98	-17	-17	-17	-21	-15	-16	-9	-13	-10	-15	-16	-17
	=6. ESI	72.1	04-05	100.0	123.5	04-98	75.3	72.1	75.2	72.8	80.6	83.3	91.2	94.3	95.3	88.4	102.3	98.5
MT	1. Industry	-25	07-05	-9	5	12-05	-19	-19	4	2	-25	-20	-20	-8	-15	5	4	2
	2. Services
	3. Consumer	-34	05-05	-23	0	01-03	-28	-32	-34	-33	-33	-33	-29	-29	-29	-29	-24	-31
	4. Retail trade
	5. Construction
	=6. ESI
NL	1. Industry	-12	05-93	-2	6	10-00	-1	-2	-2	-4	-6	-4	-2	1	0	-1	0	2
	2. Services	3	06-03	16	35	12-97	7	10	6	9	6	4	6	9	8	8	5	10
	3. Consumer	-19	07-93	4	31	03-00	-3	2	-4	-5	-4	-7	-7	-2	-2	3	3	3
	4. Retail trade	-16	12-03	12	30	10-99	-6	-4	-10	-8	-10	-9	-7	-3	-3	7	7	6
	5. Construction	-25	05-03	-3	27	12-00	-2	-1	-1	1	1	4	6	4	6	3	3	7
	=6. ESI	79.0	05-93	100.0	117.5	12-97	94.7	95.9	94.2	92.4	89.7	91.0	93.0	97.9	96.7	97.3	98.5	102.6
AT	1. Industry	-30	06-93	-12	8	03-90	-11	-11	-10	-11	-12	-10	-7	-9	-8	-9	-5	-7
	2. Services	0	01-02	15	30	03-98	9	12	10	7	10	9	8	8	12	12	16	15
	3. Consumer	-16	04-96	-1	11	07-00	-2	0	-3	-3	-4	-4	-5	-3	-2	-3	2	-1
	4. Retail trade	-29	03-03	-13	4	07-00	-10	-9	-15	-14	-13	-13	-10	-8	-9	-8	-4	-2
	5. Construction	-60	04-96	-29	-7	02-06	-24	-24	-20	-16	-23	-18	-14	-13	-14	-12	-12	-7
	=6. ESI	71.6	04-96	100.0	119.8	05-00	98.5	101.9	99.8	97.9	98.5	99.4	100.3	100.8	105.2	102.9	111.3	108.5
PL	1. Industry	-29	10-01	-14	9	09-97	-13	-14	-14	-13	-13	-13	-11	-13	-12	-11	-12	-13
	2. Services ⁽ⁿ⁾	-7	01-03	2	11	01-06	7	7	6	4	8	7	7	8	10	10	11	10
	3. Consumer	-40	08-01	-29	-11	02-06	-18	-18	-21	-23	-23	-22	-20	-18	-15	-14	-13	-11
	4. Retail trade	-19	01-02	-6	7	07-98	-7	-8	-7	-6	-6	-5	-5	-5	-1	-4	-4	-5
	5. Construction	-63	12-02	-42	-21	02-06	-30	-29	-29	-31	-29	-28	-27	-24	-21	-25	-21	-21
	=6. ESI	75.9	02-99	100.0	150.7	02-06	132.4	131.9	127.3	120.2	129.7	126.6	131.5	134.1	143.3	145.8	150.1	150.7
PT	1. Industry	-28	06-93	-8	7	03-98	-10	-6	-10	-14	-14	-12	-10	-7	-8	-10	-10	-8
	2. Services	-17	05-03	7	29	06-01	-3	-3	1	-4	-9	2	-1	-3	-3	4	-5	-3
	3. Consumer	-49	03-03	-23	-1	07-91	-31	-30	-31	-39	-42	-42	-41	-41	-40	-41	-41	-38
	4. Retail trade	-27	01-03	-8	4	01-99	-7	-7	-10	-13	-17	-19	-19	-17	-20	-11	-6	-15
	5. Construction	-56	02-03	-26	-1	12-97	-34	-39	-34	-42	-44	-39	-41	-31	-38	-39	-35	-35
	=6. ESI	73.9	06-93	100.0	113.6	05-97	91.2	95.1	93.2	86.7	83.3	88.2	88.6	90.7	89.5	90.8	88.1	89.3
SI	1. Industry	-21	03-99	-3	18	06-00	0	-3	-3	-2	-3	-2	-1	0	-1	3	5	4
	2. Services	12	05-05	23	32	10-02	14	12	12	15	19	18	18	14	17	15	16	17
	3. Consumer	-29	06-99	-19	-9	10-04	-15	-13	-13	-18	-18	-17	-21	-22	-26	-24	-16	-15
	4. Retail trade	3	01-01	11	23	04-99	8	14	13	13	18	16	16	16	19	17	21	16
	5. Construction	-33	06-02	-8	6	01-05	2	-2	-4	-7	-8	-9	-8	-11	-10	-10	-16	-14
	=6. ESI	76.8	03-99	100.0	131.3	06-00	92.0	92.5	92.2	91.5	97.0	98.2	95.6	90.3	93.0	94.6	101.0	100.5
SK	1. Industry	-22	12-95	5	26	05-96	12	11	6	8	-2	-1	7	2	4	-2	-4	1
	2. Services	27	09-05	46	60	06-03	33	37	33	33	40	31	27	28	30	41	47	42
	3. Consumer	-50	08-99	-30	-9	06-05	-13	-10	-12	-9	-12	-14	-24	-18	-12	-14	-14	-14
	4. Retail trade	-17	10-93	8	34	11-98	12	15	12	20	16	12	15	16	22	24	14	18
	5. Construction	-86	07-99	-27	18	03-97	-13	-11	-11	-9	-7	-10	-9	-11	-5	-6	-10	-11
	=6. ESI	71.2	03-99	100.0	125.5	05-96	99.5	104.8	98.2	102.5	98.9	92.5	87.5	89.9	95.2	101.8	103.9	102.3
FI	1. Industry	-24	01-93	2	30	10-94	6	-3	-2	10	19	15	12	11	2	3	11	
	2. Services	-12	09-03	26	61	09-00	32	25	34	38	41	41	40	37	35	38	31	45
	3. Consumer	6	11-01	15	23	02-00	17	14	14	10	12	15	13	16	17	17	14	16
	4. Retail trade	-17	11-00	-3	10	05-04	-4	-1	1	6	4	2	7	10	9	6	6	8
	5. Construction	-97	09-91	-17	48	06-98	16	21	13	14	21	22	10	10	12	19	22	24
	=6. ESI	74.6	04-91	100.0	120.7	11-94	107.1	101.4	104.9	110.5	115.0	113.5	111.5	111.1	111.5	108.4	105.9	113.0
SE	1. Industry	-29	10-01	-5	15	05-00	-7	-9	-7	-10	-10	-7	-10	-2	-7	-4	2	0
	2. Services	-24	01-03	17	46	12-00	32	31	27	32	32	26	34	37	42	33	37	39
	3. Consumer	-10	09-96	7	25	03-00	7	6	5	3	3	4	6	8	8	10	12	11
	4. Retail trade	-8	09-01	7	30	02-06	0	1	-2	3	7	11	13	14	17	21	27	30
	5. Construction	-83	12-93	-36	27	01-06	-3	6	6	15	27	8	21	14	15	19	27	25
	=6. ESI	79.0	10-01	100.0	127.1	03-00	107.0	105.1	104.4	105.4	106.0	106.3	107.8	112.3	110.7	110.7	115.8	115.3
UK	1. Industry	-40	02-91	-12	11	02-95	-5	-10	-13	-17	-10	-17	-10	-10	-15	-15	-19	-12
	2. Services	-20	12-02	14	37	10-97	3	-1	1	-1	3	10	3	3	13	-2	4	7
	3. Consumer	-28	10-92	-8	7	10-97	3	0	-3	-3	-1	-2	-3	-4	-4	-4	-4	-2
	4. Retail trade	-32	11-05	-5	20	06-04	-13	-19	-22	-28	-30	-21	-22	-23	-32	-23	-14	-17
	5. Construction	-79	06-91	-19	5	08-04	-2	-7	-10	-12	-12	-11						

TABLE 2: Monthly survey of manufacturing industry (s.a.)^(a)

		Since 01/1990						2005						2006					
		Min.		Ave.		Max.		Mar.	Apr.	May	June	July	Aug.	Sep.	Oct.	Nov.	Dec.	Jan.	Feb.
		Value	Date	Value	Date	Value	Date												
INDUSTRIAL CONFIDENCE INDICATOR	EU	-28	11-92	-8	7	12-94	-7	-9	-10	-10	-8	-8	-7	-6	-7	-6	-6	-4	-3
	Euro area	-31	07-93	-8	6	05-00	-8	-10	-11	-10	-8	-8	-7	-6	-7	-5	-4	-2	
	BE	-33	04-93	-11	5	06-00	-7	-11	-13	-13	-13	-12	-11	-6	-6	-4	-5	-2	
	CZ	-31	03-99	0	27	06-00	7	5	4	5	7	6	6	10	9	8	8	6	
	DK	-26	12-98	-2	16	09-94	1	-5	0	-2	-4	2	0	3	3	1	4	4	
	DE	-35	04-93	-11	11	09-90	-11	-13	-13	-12	-12	-11	-9	-8	-9	-7	-5	-3	
	EE	-31	07-92	5	21	12-05	17	13	15	11	12	15	13	19	17	21	14	13	
	EL	-12	09-90	0	13	03-00	-7	-4	-9	-10	-10	-8	-6	-6	-6	-2	-1	-1	
	ES	-44	01-93	-9	7	04-00	-4	-6	-7	-8	-5	-5	-4	-5	-5	-3	-7	-6	
	FR	-41	06-93	-8	15	06-00	-9	-10	-12	-9	-8	-8	-9	-7	-9	-6	-7	-4	
	IE	-23	11-01	-2	21	11-99	0	-2	-8	-2	3	-4	-4	-11	-3	-5	-6	0	
	IT	-22	04-93	-4	13	07-95	-7	-7	-9	-9	-6	-4	-3	-3	-3	-1	1	0	
	CY	-9	04-03	3	13	04-02	6	3	5	0	3	0	1	-1	-3	-1	1	1	
	LV	-45	04-93	-10	8	12-05	3	4	5	4	5	6	7	5	7	8	5	5	
	LT	-37	11-98	-14	5	10-05	-3	-4	-8	-2	4	-3	4	5	1	4	4	4	
	LU	-35	05-92	-10	26	04-95	2	-9	-18	-17	-20	-21	-18	-10	-9	-4	-5	-11	
	HU	-15	05-99	-3	8	12-97	-12	-14	-14	-12	-11	-10	-6	-5	-6	-3	-3	-3	
	MT	-25	07-05	-9	5	12-05	-19	-19	4	2	-25	-20	-20	-8	-15	5	4	2	
	NL	-12	05-93	-2	6	10-00	-1	-2	-2	-4	-6	-4	-2	1	0	-1	0	2	
	AT	-30	06-93	-12	8	03-90	-11	-11	-10	-11	-12	-10	-7	-9	-8	-9	-5	-8	
	PL	-29	10-01	-14	9	09-97	-13	-14	-14	-13	-13	-13	-11	-13	-12	-11	-12	-13	
	PT	-28	06-93	-8	7	03-98	-10	-6	-10	-14	-14	-12	-10	-7	-8	-10	-10	-8	
	SI	-21	03-99	-3	18	06-00	0	-3	-3	-2	-3	-2	-1	0	-1	3	5	4	
	SK	-22	12-95	5	26	05-96	12	11	6	8	-2	-1	7	2	4	-2	-4	1	
	FI	-24	01-93	2	30	10-94	6	-3	-2	10	19	15	12	11	11	2	3	11	
	SE	-29	10-01	-5	15	05-00	-7	-9	-7	-10	-10	-7	-10	-2	-7	-4	2	0	
	UK	-40	02-91	-12	11	02-95	-5	-10	-13	-17	-10	-17	-10	-10	-15	-15	-19	-12	
PRODUCTION EXPECTATIONS	EU	-16	11-92	6	23	12-94	7	5	4	4	5	7	7	9	7	8	9	10	
	Euro area	-18	12-92	5	21	12-94	6	4	2	4	4	6	7	8	6	8	9	10	
Component of the industrial confidence indicator	BE	-36	04-93	-3	16	12-94	3	3	-1	-4	-4	-2	-2	4	3	5	2	7	
	CZ	-26	05-93	22	61	05-95	24	22	26	31	30	28	28	35	36	30	29	19	
	DK	-23	12-98	10	30	02-98	17	4	12	7	-1	10	8	14	15	14	13	16	
	DE	-26	11-92	1	20	12-94	0	-2	-3	-1	-1	3	4	5	2	4	9	8	
	EE	-70	04-92	19	68	03-02	38	25	32	22	17	27	23	30	27	29	19	19	
	EL	3	02-91	26	44	02-00	19	22	14	19	14	16	17	18	14	22	25	29	
	ES	-19	01-93	5	17	12-00	9	12	9	5	5	5	7	6	7	10	4	0	
	FR	-30	07-93	6	27	10-00	7	3	3	7	7	7	4	7	4	10	8	11	
	IE	-22	11-01	9	35	11-99	1	7	-3	4	17	2	-3	-10	7	1	-10	18	
	IT	-12	12-92	13	31	12-94	10	11	9	7	9	11	13	15	13	14	16	13	
	CY	1	05-02	13	34	12-04	19	10	23	4	16	5	10	11	2	8	10	12	
	LV	-21	04-93	16	41	03-02	19	19	23	20	21	23	24	21	24	25	20	20	
	LT	-22	04-94	12	35	08-97	16	26	10	19	29	20	29	26	21	27	24	21	
	LU	-42	10-91	-4	28	04-95	15	0	-10	5	-10	-15	-11	-3	2	2	7	-8	
	HU	-10	06-05	12	34	12-97	-6	-6	-8	-10	-2	-4	8	7	2	4	7	9	
	MT	-28	09-05	14	55	02-06	-17	1	-11	-15	-5	-12	-28	13	10	37	38	55	
	NL	-4	04-93	6	15	11-99	8	6	6	4	-2	5	6	13	9	6	11	14	
	AT	-19	06-93	4	18	11-03	11	9	11	8	6	7	13	10	8	6	14	13	
	PL	-4	10-01	20	44	02-03	15	14	16	16	16	17	21	17	20	23	18	15	
	PT	-11	03-93	5	21	01-97	0	10	1	-5	-5	-4	-4	0	-1	1	-2	-1	
	SI	10	10-01	23	42	06-00	29	24	28	24	19	24	27	26	29	23	26	23	
	SK	-12	12-95	31	62	12-97	36	37	27	26	8	6	40	25	32	10	9	31	
	FI	-26	06-91	14	50	07-05	30	14	10	32	50	41	38	30	33	14	14	33	
	SE	-19	05-91	15	46	05-00	9	12	18	15	11	16	13	29	18	22	30	27	
	UK	-38	02-91	5	33	02-95	9	5	0	-4	5	0	5	3	1	1	-6	3	
	ORDER BOOKS	EU	-50	07-93	-20	1	02-95	-17	-20	-22	-22	-19	-20	-18	-17	-18	-15	-15	-12
		Euro area	-54	07-93	-19	4	06-00	-17	-19	-21	-21	-18	-18	-16	-16	-16	-13	-12	-10
Component of the industrial confidence indicator	BE	-51	05-93	-20	11	06-00	-17	-23	-26	-28	-25	-29	-23	-20	-17	-14	-11	-9	
	CZ	-50	12-98	-7	30	01-01	-3	-3	-6	-6	-5	-4	-3	-3	0	-1	1		
	DK	-41	04-99	-6	32	12-94	-5	-7	-8	-6	2	4	3	7	4	5	10	5	
	DE	-61	07-93	-24	12	07-90	-19	-22	-22	-23	-21	-23	-19	-18	-19	-14	-13	-8	
	EE	-43	10-92	1	29	06-01	10	10	6	8	12	10	10	21	11	22	14	13	
	EL	-31	06-05	-13	7	05-98	-24	-20	-24	-31	-25	-24	-22	-20	-16	-14	-14	-15	
	ES	-65	01-93	-16	11	07-98	-10	-14	-14	-15	-8	-7	-7	-11	-9	-5	-11	-6	
	FR	-64	06-93	-16	27	06-00	-19	-17	-21	-17	-16	-16	-19	-15	-18	-17	-15	-12	
	IE	-36	06-93	-8	24	12-99	2	-9	-7	-4	-3	-8	-1	-17	-14	-11	-7	-13	
	IT	-47	06-93	-16	13	02-95	-20	-22	-24	-24	-20	-14	-14	-16	-15	-11	-12	-12	
	CY	-39	02-03	-18	-3	07-05	-6	-4	-8	-9	-3	-8	-7	-12	-10	-5	-10	-9	
	LV	-79	07-93	-39	-7	12-05	-14	-13	-15	-13	-12	-9	-9	-11	-8	-7	-10	-10	
	LT	-79	11-98	-41	-9	11-93	-24	-30	-29	-24	-18	-24	-17	-15	-23	-20	-19	-14	
	LU	-64	02-92	-18	34	12-97	-11	-16	-23	-37	-30	-38	-24	-18	-15	-10	-14	-17	
	HU	-40	03-03	-19	0	04-98	-23	-33	-31	-29	-27	-25	-20	-16	-18	-11	-13	-16	
	MT	-62	05-03	-30	10	06-05	-21	-37	9	10	-35	-32	-23	-25	-30	-6	-7	-27	
	NL	-25	01-93	-8	6	11-00	-5	-8	7	-9	-9	-10	-6	-5	-5	-4	-5	-5	
	AT	-57	04-96	-25	11	03-90	-32	-31	-27	-30	-31	-31	-26	-29	-25	-25	-23	-27	
	PL	-77	01-02	-58	8	09-97	-51	-53	-54	-54	-54	-53	-52	-54	-54	-52	-50	-51	
	PT	-52	07-93	-19	9	03-98	-24	-26	-26	-31	-30	-30	-21	-20	-20	-22	-22	-15	
	SI	-51	03-99	-18	12	06-00	-14	-18	-19	-15	-14	-13	-16	-14	-17	-6	-5	-5	
	SK	-70	03-99	-8	49	09-94	3	-8	-8</										

TABLE 2: (continued) Monthly survey of manufacturing industry (s.a.)^(a)

		Since 01/1990						2005						2006					
		Min.		Ave.		Max.		Mar.	Apr.	May	June	July	Aug.	Sep.	Oct.	Nov.	Dec.	Jan.	Feb.
		Value	Date	Value	Date	Value	Date												
STOCKS OF FINISHED PRODUCTS ^(b)	EU	3	12-94	11	22	06-93	12	13	14	13	12	12	10	10	11	11	11	11	9
	Euro area	2	11-94	11	24	04-93	12	13	14	12	11	11	10	10	9	10	10	10	8
Component of the industrial confidence indicator	BE	-4	02-95	9	26	10-01	6	12	11	7	11	5	7	3	3	4	5	4	
	CZ	-12	04-00	16	46	08-93	0	5	9	11	2	7	8	4	7	8	5	3	
	DK	-7	03-94	10	28	06-99	10	11	4	7	13	6	10	11	10	16	11	8	
	DE	-9	09-90	10	25	07-93	13	13	15	14	13	13	11	11	11	11	10	8	
	EE	-16	05-92	6	39	06-93	-4	-5	-5	-4	-7	-7	-6	-7	-12	-12	-9	-6	
	EL	1	06-94	12	22	09-90	15	16	18	18	18	15	13	16	17	15	15	16	
	ES	-1	11-02	15	47	01-93	12	16	14	15	13	13	12	8	13	13	15	10	
	FR	-2	04-00	14	34	06-93	15	16	18	17	14	13	13	12	12	12	13	12	
	IE	-13	12-99	6	23	11-93	2	5	15	5	6	7	8	5	2	4	2	6	
	IT	-1	07-95	8	17	10-90	11	11	11	8	9	10	8	7	6	6	3	2	
	CY	-34	09-01	-13	6	12-05	-6	-3	-1	-5	4	-2	-1	3	2	6	-3	0	
	LV	-12	03-04	7	43	07-93	-4	-5	-7	-4	-4	-5	-5	-5	-5	-6	-4	-6	
	LT	-16	01-95	12	49	01-94	1	7	4	2	-1	4	-1	-3	-3	-4	-7	-7	
	LU	-22	03-95	8	31	03-02	0	10	19	18	20	10	18	10	14	5	6	8	
	HU	-7	11-03	3	15	12-98	8	3	2	-2	4	3	6	5	2	3	2	3	
	MT	-14	05-05	11	34	07-05	19	20	-14	-12	34	16	8	11	23	16	19	21	
	NL	-1	12-94	5	11	06-91	5	5	4	6	5	6	6	6	5	5	5	3	
	AT	4	03-90	14	26	04-96	12	11	12	11	10	8	9	10	6	8	6	8	
	PL	-11	10-94	3	20	02-99	1	2	2	1	2	4	3	3	4	3	4	2	
	PT	-7	09-04	8	25	06-93	6	2	5	6	8	4	6	0	2	8	6	8	
SI	-1	06-00	14	28	02-96	15	16	17	15	14	15	15	12	14	7	8	7		
SK	-27	02-01	9	55	05-94	2	-4	1	0	1	5	7	5	7	3	13	16		
FI	-20	04-95	4	31	01-96	13	23	13	-1	-8	-6	0	5	5	9	13	7		
SE	3	03-00	17	37	11-01	15	20	17	17	15	12	18	17	22	19	16	16		
UK	6	03-04	17	32	11-98	13	15	17	20	19	23	10	13	20	19	23	16		
PRODUCTION TREND OBSERVED IN RECENT MONTHS	EU	-23	01-93	-1	19	01-95	-1	-5	-3	-2	1	-2	0	1	1	4	1	4	
	Euro area	-25	01-93	-2	16	01-95	-4	-5	-4	-4	-1	-3	-1	0	0	4	1	4	
BE	-20	02-93	-1	16	05-97	-1	-4	-6	-10	-6	-6	3	2	-2	8	-2	4		
CZ	-32	10-98	12	42	11-00	8	8	11	7	14	12	24	23	20	20	14	17		
DK	-21	04-99	11	41	09-94	-1	1	8	12	15	9	8	11	12	17	23	22		
DE	-32	02-02	-4	22	12-90	-8	-9	-8	-6	-1	-8	-1	0	-1	7	0	6		
EE	-24	03-99	14	56	06-01	22	30	27	22	22	22	22	21	20	24	24	24		
EL	-5	10-90	14	36	01-00	7	-3	3	4	6	4	1	6	7	16	20	19		
ES	-44	04-93	0	21	04-95	2	-6	1	0	5	0	-4	-2	3	-1	-1	6		
FR	-38	07-93	4	36	01-95	9	5	4	9	8	7	6	3	6	4	3	2		
IE	-25	10-01	6	38	03-00	-3	10	6	4	6	13	-6	3	6	0	3	8		
IT	-36	06-93	-10	14	03-95	-15	-16	-16	-18	-16	-7	-10	-12	-12	-9	-8	-10		
CY	-36	04-03	-9	12	04-05	-5	12	1	-6	-2	-1	-14	-1	0	-4	-13	-3		
LV	-49	04-93	3	29	06-01	11	13	9	16	16	11	15	12	18	21	19	18		
LT	-36	07-94	1	34	04-98	-6	-16	8	7	21	16	19	21	4	31	14	20		
LU	-41	04-92	-2	32	04-95	-7	-2	-19	-9	-18	-5	0	-2	-1	5	-4	-9		
HU	-30	06-99	-1	27	04-98	-16	-23	-13	-15	-13	-9	3	1	0	8	7	3		
MT	-33	05-03	-2	36	02-06	-9	2	25	3	-13	-13	1	20	14	34	8	36		
NL	-12	05-93	3	14	10-97	-1	3	4	-3	0	-5	10	4	-2	5	6	6		
AT	-28	06-93	5	27	03-90	4	4	6	5	9	9	6	12	16	16	14	10		
PL	-18	07-96	0	23	04-04	-7	-14	-3	2	8	0	5	5	6	18	12	2		
PT	-18	01-93	-2	15	08-94	-10	-18	-5	-12	-12	-7	-3	2	-6	-3	-11	-6		
SI	-20	02-99	8	39	05-00	2	8	6	10	8	-8	9	9	2	16	13	13		
SK	-30	12-96	17	78	12-03	24	30	34	34	13	5	-20	-2	6	43	20	35		
FI	-28	06-91	11	53	12-04	8	13	5	-3	7	-4	3	21	18	25	22	27		
SE	-28	07-91	10	48	12-94	13	12	8	6	2	3	17	23	15	17	16	22		
UK	-46	06-91	-2	34	03-95	9	-7	-4	4	5	-5	-10	-6	0	-10	-8	-6		
EXPORT ORDER BOOKS	EU	-45	01-93	-20	1	02-95	-15	-19	-20	-21	-18	-19	-17	-16	-15	-12	-12	-10	
	Euro area	-52	06-93	-21	2	06-00	-15	-18	-19	-19	-18	-18	-17	-15	-14	-11	-11	-9	
BE	-56	05-93	-22	7	06-00	-20	-30	-32	-34	-31	-35	-24	-23	-24	-18	-17	-11		
CZ	-41	12-98	-3	26	09-00	-10	-9	-8	-8	-10	-6	-7	-6	-7	0	-5	-2		
DK	-39	04-99	-4	25	09-94	-6	-8	-8	-6	6	2	4	2	5	3	3	3		
DE	-60	08-93	-27	0	02-90	-12	-14	-13	-15	-16	-17	-13	-12	-12	-7	-10	-8		
EE	-37	03-99	1	25	03-01	-4	3	0	3	1	2	-1	2	0	5	9	5		
EL	-36	05-03	-15	13	03-95	-19	-21	-20	-27	-21	-23	-24	-19	-12	-5	-7	-9		
ES	-55	01-93	-19	6	05-95	-15	-23	-22	-24	-18	-19	-24	-25	-16	-17	-19	-18		
FR	-65	07-93	-13	36	06-00	-13	-14	-21	-18	-15	-15	-16	-12	-12	-13	-9	1		
IE	-53	09-93	-7	38	04-00	-1	-27	-5	-2	-5	7	-5	-23	-11	-23	2	-22		
IT	-43	09-92	-18	19	02-95	-23	-24	-26	-27	-25	-20	-20	-18	-18	-13	-12	-15		
CY	-53	05-03	-25	5	05-05	-4	-18	5	-10	-12	-10	-14	-25	-11	-13	-10	-13		
LV	-59	12-98	-36	-15	12-03	-19	-23	-21	-20	-19	-16	-20	-16	-17	-15	-15	-16		
LT	-65	04-99	-36	-13	02-06	-31	-29	-29	-29	-22	-25	-18	-19	-24	-25	-21	-13		
LU	-75	11-91	-23	45	04-00	-28	-27	-41	-45	-41	-45	-30	-25	-21	-20	-21	-24		
HU	-44	12-02	-16	7	02-98	-29	-32	-30	-28	-32	-30	-26	-25	-17	-12	-16	-21		
MT	-80	09-03	-32	9	06-05	-21	-44	1	9	-43	-30	-20	-28	-25	1	-1	-27		
NL	-24	01-93	-6	11	09-00	-3	-3	-6	-8	-5	-7	-4	-3	-5	-2	0	2		
AT	-58	04-96	-34	-1	03-90	-39	-41	-39	-39	-41	-42	-37	-39	-37	-33	-33	-34		
PL	-75	05-99	-57	13	07-97	-58	-56	-59	-57	-56	-59	-57	-57	-58	-56	-56	-55		
PT	-59	04-93	-17	22	01-95	-22	-25	-28	-30	-26	-27	-23	-21	-23	-19	-16	-19		
SI	-53	05-99	-16	15	06-00	-13	-13	-14	-11	-12	-11	-14	-10	-17	-7	-3	-3		
SK	-57	03-99	-8	53	01-94	1	-9	-8	-4	-8	1	-4	-6	-14	-12	-8	-12		
FI	-43	01-99	-8	42	01-95	-6	-3	-7	-6	-4	-1	-5	5	-2	-8	1	5		
SE	-45	12-01	4	45	08-91	-19	-19	-30	-28	-22	-20	-2							

TABLE 2: (continued) **Monthly survey of manufacturing industry (s.a.)**^(a)

		Since 01/1990						2005						2006					
		Min.		Ave.		Max.		Mar.	Apr.	May	June	July	Aug.	Sep.	Oct.	Nov.	Dec.	Jan.	Feb.
		Value	Date	Value	Date	Value	Date												
EMPLOYMENT EXPECTATIONS	EU	-39	06-93	-15	2	11-00	-12	-14	-14	-15	-13	-14	-14	-13	-13	-11	-11	-10	
	Euro area	-42	06-93	-14	4	11-00	-13	-14	-14	-15	-13	-13	-14	-12	-12	-10	-11	-9	
	BE	-26	09-93	-9	9	09-00	-10	-12	-14	-16	-15	-15	-12	-11	-10	-5	-7	-3	
	CZ	-58	06-99	-25	2	03-01	-7	-8	-10	-8	-11	-9	-5	-10	-6	-7	-10	-9	
	DK	-23	06-93	-3	13	03-98	3	-10	-4	-7	-9	1	-4	2	2	0	1	2	
	DE	-52	06-93	-18	8	02-90	-21	-21	-19	-18	-17	-17	-17	-15	-17	-14	-14	-12	
	EE	-78	04-92	-12	16	03-05	16	14	13	8	1	4	4	9	7	4	5	8	
	EL	-12	02-06	-2	12	05-02	-3	-11	-9	-9	-10	-8	-5	-6	-7	-3	-7	-12	
	ES	-53	06-93	-9	9	03-01	-3	2	-1	-4	-8	-8	-8	-12	-12	-5	-8	-5	
	FR	-50	09-93	-17	12	09-00	-12	-23	-21	-20	-15	-18	-21	-17	-14	-17	-17	-13	
	IE	-34	12-92	-10	16	09-00	-5	-1	4	-4	1	-15	-11	-12	-14	-13	-7	-9	
	IT	-30	08-96	-4	11	11-00	-3	-3	-3	-7	-6	-3	-6	-5	-4	-2	0	-1	
	CY	-15	04-02	11	40	10-04	8	21	10	10	24	9	10	33	12	13	25	12	
	LV	-51	04-93	-8	11	11-05	4	5	7	8	9	6	7	10	11	9	8	8	
	LT	-59	04-94	-27	8	10-05	2	1	-10	-6	0	-4	1	8	0	6	-2	-3	
	LU	-55	12-91	-27	1	09-01	-26	-16	-31	-23	-39	-29	-27	-24	-26	-29	-31	-29	
	HU	-60	12-91	-17	10	10-97	-13	-16	-21	-19	-14	-12	-12	-15	-15	-12	-11	-5	
	MT	-26	11-05	-3	18	12-02	4	-15	11	16	-21	-15	-14	-23	-26	-5	-12	-15	
	NL	-30	06-93	-8	15	06-90	-10	-11	-12	-10	-13	-10	-10	-7	-9	-8	-4	-5	
	AT	-29	01-96	-10	6	09-00	-6	-6	-10	-8	-6	-10	-4	-4	0	-1	2	2	
PL	-55	12-99	-24	-3	01-06	-4	-7	-6	-5	-5	-5	-3	-4	-4	-3	-3	-4		
PT	-35	06-93	-16	-2	02-90	-22	-22	-21	-24	-20	-19	-23	-21	-22	-24	-26	-20		
SI	-42	10-95	-23	-10	07-04	-18	-18	-18	-17	-20	-24	-22	-21	-21	-18	-18	-16		
SK	-56	06-99	-23	2	06-96	-16	-18	-17	-15	-22	-20	-19	-18	-17	-22	-18	-12		
FI	-60	06-91	-16	15	12-00	-6	-3	-13	-12	1	-5	2	-1	-8	0	-7	-6		
SE	-51	06-92	-20	23	12-94	-17	-23	-18	-30	-29	-23	-29	-26	-26	-26	-16	-16		
UK	-50	03-91	-20	2	06-97	-8	-12	-16	-21	-14	-16	-19	-15	-16	-16	-15	-19		
SELLING-PRICE EXPECTATIONS	EU	-13	01-99	5	26	02-95	6	2	0	-1	0	0	3	5	5	5	6		
	Euro area	-10	12-98	5	25	02-95	5	2	0	-1	1	1	4	3	6	6	6	7	
	BE	-18	02-96	2	26	12-94	2	0	-6	-9	-2	-4	-1	5	3	1	3	8	
	CZ	-6	12-98	20	71	03-95	11	5	2	-1	5	3	13	16	5	5	-1	4	
	DK	-12	11-01	-1	12	11-04	2	-2	-1	-3	-5	-2	-7	1	2	3	1	4	
	DE	-8	12-93	6	23	02-95	6	2	-2	-1	-1	-1	3	1	5	3	4	6	
	EE	-28	03-99	16	86	04-92	12	14	16	14	14	14	20	23	14	21	19	19	
	EL	-4	01-99	17	41	10-90	9	7	8	5	7	6	6	7	7	7	8	9	
	ES	-18	04-93	3	35	04-95	7	-4	1	2	1	3	4	4	8	5	6	9	
	FR	-26	01-99	0	24	02-90	3	-1	0	-4	-4	-1	3	-2	5	9	0	0	
	IE	-25	11-92	-3	29	11-03	-1	-8	12	-1	5	-4	1	5	-6	3	-4	0	
	IT	-10	12-98	11	40	03-95	7	9	7	4	7	9	9	11	10	12	13	14	
	CY	-9	10-01	6	38	10-03	5	7	3	-2	2	4	10	-7	6	4	2	-2	
	LV	-17	12-98	16	50	07-94	17	17	15	18	18	20	26	18	24	25	17	22	
	LT	-20	01-00	15	75	11-93	7	7	-3	4	6	1	11	14	6	6	7	9	
	LU	-50	08-91	-3	53	12-94	13	3	-3	-5	-11	-15	-11	-1	6	3	-2	-3	
	HU	1	02-06	27	51	01-01	16	16	14	15	14	11	18	20	15	13	5	1	
	MT	-43	12-04	-7	34	12-03	5	-29	29	1	-11	6	1	-8	-17	-31	-30	-22	
	NL	-7	01-99	4	20	12-94	1	-4	-1	-2	3	1	2	6	5	4	6	9	
	AT	-23	03-96	-1	17	03-90	-1	0	-3	-2	-5	1	3	1	3	2	3	11	
PL	-6	06-02	14	46	01-93	-5	-2	-4	-2	-4	0	-1	-5	2	-2	-2	2		
PT	-9	05-03	8	29	10-90	1	-2	-5	-4	6	7	10	3	3	-1	16	1		
SI	-24	04-99	-8	5	01-01	-3	-8	-10	-8	-7	-5	-6	-3	-4	-5	-2	4		
SK	-33	03-01	29	81	04-95	28	12	3	1	-3	8	-1	19	6	-2	12	18		
FI	-34	03-96	3	49	08-94	15	4	3	2	20	6	9	4	14	14	20	18		
SE	-20	11-96	5	37	12-94	1	2	-2	1	-3	-1	6	6	8	16	11	3		
UK	-30	01-99	0	29	02-95	15	5	-1	-1	-8	-6	-6	1	-1	0	5	4		

(a) The indicator is the arithmetic average of the balances (%) of the questions on production expectations, order-books and stocks (the last with inverted sign).

(b) Highest figure is considered as minimum, lowest figure is considered as maximum.

TABLE 3: Monthly survey of services (s.a.)^(a)

		Since 01/1990						2005						2006					
		Min.		Ave.		Max.		Mar.	Apr.	May	June	July	Aug.	Sep.	Oct.	Nov.	Dec.	Jan.	Feb.
		Value	Date	Value	Date	Value	Date												
SERVICES CONFIDENCE INDICATOR	EU	-6	03-03	17	32	08-98	10	8	10	9	11	11	11	13	15	12	15	14	
	Euro area	-5	11-01	18	34	08-98	9	8	10	9	12	10	11	14	14	13	15	14	
	BE	-7	03-03	13	33	03-98	11	12	3	9	6	5	14	14	11	14	28	11	
	CZ	32	06-05	40	47	07-02	38	37	37	32	32	37	40	38	34	41	43	43	
	DK	11	10-01	26	37	04-04	34	33	34	32	29	31	33	31	33	35	34	32	
	DE	-18	12-02	25	52	03-99	5	3	9	8	11	10	10	11	10	12	18	16	
	EE	5	11-04	24	40	01-06	20	23	23	27	31	23	26	25	31	34	40	29	
	EL	-14	04-03	26	62	08-00	23	22	16	11	10	12	13	21	20	14	13	15	
	ES	5	02-06	30	56	06-98	14	17	28	26	21	23	19	19	22	24	18	5	
	FR	-22	06-93	3	25	06-90	8	6	7	10	11	10	10	11	10	7	9	11	
	IE	-14	05-03	16	44	08-98	-4	9	-2	-12	7	-6	-2	10	16	19	18	15	
	IT	-5	11-01	17	44	02-98	16	12	10	-1	11	0	14	23	28	19	19	19	
	CY	-21	09-02	5	19	06-05	18	15	7	19	15	10	4	3	14	3	6	19	
	LV	7	03-02	11	16	01-06	14	13	12	13	15	13	14	13	16	14	16	15	
	LT	9	04-05	19	33	11-05	12	9	16	16	25	17	23	28	33	27	32	29	
	HU	-11	10-04	1	14	03-02	-5	-7	-3	-7	-3	-1	0	3	2	-7	5	1	
	NL	3	06-03	16	35	12-97	7	10	6	9	6	4	6	9	8	8	5	10	
	AT	0	01-02	15	30	03-98	9	12	10	7	10	9	8	8	12	12	16	15	
	PL⁽ⁿ⁾	-7	01-03	2	11	01-06	7	7	6	4	8	7	7	8	10	10	11	10	
	PT	-17	05-03	7	29	06-01	-3	-3	1	-4	-9	2	-1	-3	-3	4	-5	-3	
SI	12	05-05	23	32	10-02	14	12	12	15	19	18	18	14	17	15	16	17		
SK	27	09-05	46	60	06-03	33	37	33	33	40	31	27	28	30	41	47	42		
FI	-12	09-03	26	61	09-00	32	25	34	38	41	41	40	37	35	38	31	45		
SE	-24	01-03	17	46	12-00	32	31	27	32	32	26	34	37	42	33	37	39		
UK	-20	12-02	14	37	10-97	3	-1	1	-1	3	10	3	3	13	-2	4	7		
ASSESSMENT OF BUSINESS SITUATION	EU	-19	03-03	13	37	06-00	2	-1	1	-1	4	4	8	8	10	7	12	8	
	Euro area	-18	03-03	15	39	09-00	3	0	2	-1	5	3	8	10	11	9	13	8	
	BE	-27	12-01	-3	30	01-06	-2	-6	-16	-9	-10	-7	3	0	-6	-2	30	-3	
	CZ	48	06-05	59	72	07-02	58	58	60	48	48	57	60	55	51	55	53	55	
	DK	4	05-03	23	41	04-00	28	29	31	30	25	25	31	26	27	30	30	27	
	DE	-35	01-03	25	63	12-98	6	-1	6	4	11	10	10	9	11	11	19	17	
	EE	1	11-04	28	48	11-02	24	27	29	30	35	31	34	27	32	28	41	36	
	EL	-42	04-03	11	58	09-00	28	26	17	9	8	10	13	18	19	17	17	14	
	ES	-6	02-06	29	67	04-00	4	8	23	20	17	21	16	12	14	18	17	-6	
	FR	-35	09-96	-1	29	06-00	5	2	4	6	9	9	8	13	10	10	8	7	
	IE	-20	06-05	19	52	11-99	-7	4	-2	-20	15	-10	5	12	17	15	22	19	
	IT	-39	06-05	10	44	02-01	-15	-18	-29	-39	-22	-35	-1	-1	13	-6	-6	-8	
	CY	-33	09-02	-3	23	02-06	10	5	5	10	7	5	-2	1	12	4	2	23	
	LV	4	10-04	11	18	04-03	12	9	9	11	9	12	6	11	10	11	16	13	
	LT	2	04-05	22	48	03-03	5	2	13	12	27	9	24	20	25	29	24	24	
	HU	-16	10-04	-1	18	05-02	-7	-13	-8	-11	-10	-4	-6	0	-4	-12	0	-5	
	NL	-26	07-93	13	70	12-00	13	13	19	17	15	14	16	27	23	22	22	28	
	AT	-4	10-96	12	30	03-98	6	8	6	2	7	5	0	2	7	8	10	12	
	PL⁽ⁿ⁾	-7	02-04	4	11	01-06	5	5	4	1	4	2	3	4	6	7	11	11	
	PT	-22	06-03	4	24	11-97	-7	-10	-9	-14	-17	-7	-6	-9	-9	-10	-10	-14	
SI	1	12-05	24	44	10-02	17	4	5	10	14	10	10	8	3	1	6	7		
SK	13	10-05	41	66	01-03	28	34	29	25	36	18	15	13	21	30	45	29		
FI	-47	03-03	18	79	05-98	27	24	8	13	22	25	19	24	0	10	18	23		
SE	-60	01-02	9	47	01-06	36	27	31	30	37	27	26	36	43	41	47	46		
UK	-35	12-02	-1	27	12-97	-21	-17	-15	-18	-15	1	-4	-8	-7	-15	-7	-9		
EVOLUTION OF DEMAND IN RECENT MONTHS	EU	-9	02-02	15	32	03-98	9	7	14	9	11	11	10	12	15	12	16	14	
	Euro area	-12	02-02	15	32	03-98	7	6	13	9	11	10	10	13	13	13	17	13	
	BE	-9	03-03	13	41	11-97	12	12	8	17	13	5	12	18	7	12	34	6	
	CZ	15	08-02	28	39	08-04	28	25	23	24	21	25	34	31	25	27	33	34	
	DK	9	04-03	26	42	12-04	38	38	37	37	32	33	36	36	39	39	37	35	
	DE	-25	01-03	20	43	09-98	4	4	12	9	10	12	10	11	9	14	20	15	
	EE	3	11-04	24	51	01-06	21	21	22	24	29	24	33	31	36	39	51	40	
	EL	-9	04-03	32	71	06-01	26	26	17	12	10	10	11	28	22	11	10	18	
	ES	-1	08-02	23	56	06-98	5	11	24	19	16	19	13	16	17	23	14	1	
	FR	-33	03-97	5	37	01-90	6	6	7	11	12	10	9	10	8	4	10	13	
	IE	-24	10-03	9	46	08-98	-10	3	-4	-24	-2	-14	-15	4	9	17	15	8	
	IT	-28	08-02	13	39	11-05	16	12	32	11	23	12	19	33	39	33	34	26	
	CY	-34	08-02	0	21	04-04	9	9	3	20	15	8	-5	-4	18	2	1	17	
	LV	-4	02-02	9	19	11-05	14	13	10	13	15	13	11	11	19	14	17	15	
	LT	0	08-02	20	47	01-06	16	7	17	18	29	22	25	35	44	32	47	40	
	HU	-14	10-04	-2	13	03-02	-9	-13	-5	-7	-5	0	2	2	0	-4	7	4	
	NL	-49	03-01	6	50	06-98	2	-14	-24	-21	-18	-22	-21	-25	-23	-29	-28	-27	
	AT	-16	01-02	15	35	03-98	11	11	9	6	11	10	9	6	14	16	19	16	
	PL⁽ⁿ⁾	-19	01-03	-1	10	12-05	4	2	3	2	5	3	4	8	8	10	8	6	
	PT	-34	05-03	3	26	06-01	-5	-9	-2	-9	-9	5	-7	-6	-1	1	-11	2	
SI	-1	03-05	18	29	08-04	-1	3	3	8	15	18	17	11	17	16	17	20		
SK	27	09-05	45	67	07-03	35	36	29	29	40	32	27	28	30	42	43	56		
FI	-20	09-03	29	83	04-01	34	32	43	53	32	54	48	47	47	47	35	60		
SE	-19	10-01	19	53	01-01	33	32	29	33	34	26	42	43	47	32	33	41		
UK	-19	07-03	15	43	01-97	7	0	12	-1	4	13	4	-1	19	-2	5	13		

TABLE 3: (continued) **Monthly survey of services (s.a.)^(a)**

		Since 01/1990						2005						2006					
		Min.		Ave.		Max.		Mar.	Apr.	May	June	July	Aug.	Sep.	Oct.	Nov.	Dec.	Jan.	Feb.
		Value	Date	Value	Date	Value	Date												
EVOLUTION OF DEMAND EXPECTED IN THE MONTHS AHEAD	EU	1	11-01	24	37	06-98	18	18	15	18	19	16	15	19	20	17	17	21	
	Euro area	-3	11-01	23	38	05-00	17	17	16	18	19	15	15	19	18	18	17	21	
Component of the services confidence indicator	BE	-2	07-03	28	51	01-95	24	30	16	20	16	18	26	23	32	32	20	29	
	CZ	24	01-04	32	44	01-03	27	27	28	25	27	28	27	27	27	41	41	41	
	DK	16	09-01	30	41	12-04	35	33	34	30	30	36	33	30	32	35	36	34	
	DE	-16	11-01	29	59	09-00	6	6	9	9	14	9	8	13	11	11	14	18	
	EE	7	06-04	19	34	12-05	16	20	20	29	29	13	12	17	24	34	27	10	
	EL	5	05-03	36	75	09-01	13	15	14	13	14	15	14	16	20	15	11	15	
	ES	19	10-04	38	59	06-98	31	31	37	38	30	29	28	30	34	30	22	21	
	FR	-18	09-93	5	32	03-01	13	9	10	12	13	12	12	10	11	7	9	12	
	IE	-7	05-03	19	45	06-98	6	19	-1	7	6	6	4	13	21	25	17	18	
	IT	-6	09-00	25	57	06-01	47	40	28	26	32	23	22	36	31	30	28	39	
	CY	3	06-03	17	34	03-05	34	30	14	29	22	17	18	13	12	3	15	17	
	LV	8	11-02	14	25	02-02	17	17	18	16	21	14	24	17	18	17	16	16	
	LT	-7	10-02	14	31	11-05	16	17	18	19	18	21	20	29	31	19	23	23	
	HU	-5	12-05	5	17	02-02	0	4	3	-3	5	2	5	5	9	-5	6	3	
	NL	-4	01-96	26	54	07-00	6	30	22	30	22	19	23	25	25	31	22	28	
	AT	-1	10-01	18	34	06-98	10	17	14	12	12	12	14	15	16	11	17	17	
	PL⁽ⁿ⁾	-11	03-03	4	16	07-05	12	13	12	10	16	15	13	12	14	14	13	13	
	PT	-16	09-03	14	40	06-01	4	11	14	13	0	7	12	5	1	19	5	4	
	SI	22	04-03	27	32	12-04	25	30	28	27	28	27	25	22	29	29	25	24	
	SK	35	03-05	51	65	06-03	35	40	41	46	43	42	38	43	38	51	54	40	
FI	-12	10-96	32	71	01-01	35	20	51	48	70	45	53	39	57	57	41	52		
SE	-4	01-03	24	66	02-01	27	34	20	32	26	25	34	31	37	25	30	29		
UK	-14	03-03	27	57	10-97	23	14	5	17	18	15	9	18	28	11	14	17		
EVOLUTION OF EMPLOYMENT IN RECENT MONTHS	EU	-9	03-03	10	26	08-98	1	2	3	1	3	5	3	1	2	8	6	5	
	Euro area	-7	03-03	11	28	01-99	2	1	1	1	2	3	2	-1	4	7	7	6	
	BE	-14	08-02	8	30	08-98	1	5	-4	5	8	8	1	14	3	14	14	9	
	CZ	-30	11-04	-11	18	11-02	-20	-8	-20	-21	-16	-10	-3	-13	-17	-18	-12	-28	
	DK	-2	04-03	10	21	04-00	12	15	15	16	18	19	19	18	21	18	21	19	
	DE	-20	12-02	15	44	03-99	-1	0	-1	0	3	0	2	-3	-3	4	8	6	
	EE	1	06-02	9	16	09-05	5	11	13	11	11	14	16	11	11	11	12	11	
	EL	-42	06-01	7	45	06-00	-11	-3	-4	0	1	4	8	-1	-2	-2	-6	-3	
	ES	4	03-03	18	45	08-98	13	12	12	13	10	13	10	8	12	13	10	7	
	FR	-27	06-93	4	23	12-90	2	0	0	1	4	4	4	-6	3	4	6	7	
	IE	-36	05-05	1	25	02-98	-14	-13	-36	-21	-11	-20	-10	5	3	0	5	6	
	IT	-13	05-03	6	25	05-00	1	-1	2	-9	-6	0	-7	-2	13	16	6	5	
	CY	-23	06-02	-3	6	02-05	5	5	0	4	3	2	0	-1	-1	-3	1	2	
	LV	-1	05-02	5	12	02-06	9	6	5	4	7	6	6	6	7	10	11	12	
	LT	-30	11-03	-8	27	02-06	-8	-9	2	-4	-4	-3	-1	9	3	5	19	27	
	HU	-17	12-05	-6	2	07-04	-11	-10	-9	-15	-7	-1	-4	-12	-15	-17	-11	-7	
	NL	-8	05-03	17	66	06-98	-1	4	4	5	6	5	5	5	9	10	8	9	
	AT	-7	08-02	5	18	07-98	5	8	3	2	3	0	2	2	2	4	3	5	
	PL⁽ⁿ⁾	-14	02-04	-6	3	02-05	-3	0	-2	-2	1	1	-1	-2	-1	0	-1	-1	
	PT	-34	05-03	-2	28	07-98	-15	-15	-5	-5	-20	-15	-11	-11	-11	-10	-15	-13	
SI	-10	12-03	5	16	08-05	6	10	8	7	16	16	16	13	13	7	7	9		
SK	-66	12-04	-39	3	07-02	-44	-55	-48	-42	-41	-49	-56	-51	-32	-38	-34	-44		
FI	-26	04-97	29	91	11-97	22	-4	14	15	7	24	26	23	23	16	11	-2		
SE	-40	04-03	4	42	01-01	4	8	2	14	16	13	16	13	20	16	20	20		
UK	-22	04-03	9	27	05-00	0	4	11	4	3	16	9	5	-8	10	3	1		
EVOLUTION OF EMPLOYMENT EXPECTED IN THE MONTHS AHEAD	EU	-5	04-03	10	26	06-98	5	5	4	4	6	4	4	7	5	9	6	8	
	Euro area	-4	05-03	9	26	04-00	3	4	1	1	4	4	4	6	4	8	6	7	
	BE	-11	04-03	16	34	12-05	15	24	9	11	13	19	24	13	23	34	15	21	
	CZ	-31	06-04	-19	-3	08-02	-17	-20	-17	-22	-21	-17	-14	-14	-20	-16	-25	-18	
	DK	4	02-03	12	23	01-06	14	18	13	11	14	19	21	18	22	20	23	22	
	DE	-11	05-03	0	16	06-01	1	-4	-3	-2	3	-1	1	4	-1	3	7	9	
	EE	7	03-03	16	26	03-05	26	24	20	18	19	22	17	19	8	16	16	17	
	EL	-33	12-00	10	47	05-99	-18	-5	-3	-3	-1	1	3	11	8	6	-4	0	
	ES	3	05-01	18	41	04-00	11	15	14	16	13	15	12	13	12	13	10	12	
	FR	-31	06-97	1	21	06-98	5	6	1	4	6	3	5	7	1	2	0	2	
	IE	-13	11-04	8	31	04-98	3	-10	-5	0	7	4	5	6	5	0	6	2	
	IT	-10	06-05	11	34	06-00	0	5	-2	-10	-3	10	1	1	6	17	9	8	
	CY	-7	07-05	3	18	05-02	1	2	-5	-5	-7	-2	-1	-1	2	4	3	6	
	LV	-1	05-02	8	14	12-05	12	12	13	13	12	8	14	10	12	14	9	9	
	LT	-51	05-02	-5	25	10-04	7	3	4	-3	17	19	-8	2	17	13	10	17	
	HU	-9	09-03	-2	5	05-04	-2	-5	-4	-8	-3	1	-3	-4	-3	-3	-5	-8	
	NL	-4	03-05	18	40	01-99	-4	10	7	9	9	10	9	9	12	16	10	14	
	AT	-6	01-04	8	27	09-98	3	7	5	3	6	5	2	5	6	3	7	6	
	PL⁽ⁿ⁾	-12	08-03	-6	3	02-06	-6	-1	-5	-4	-2	-1	-1	-2	-2	1	0	3	
	PT	-32	08-05	2	37	08-03	-6	-8	-16	-21	-15	-32	-17	-7	-9	-3	-13	-12	
SI	-9	08-03	9	24	09-05	18	21	20	18	23	19	24	15	12	10	8	7		
SK	-67	12-04	-44	-16	05-02	-44	-53	-43	-48	-47	-38	-36	-33	-30	-35	-47	-44		
FI	-31	11-96	23	82	07-00	11	3	3	16	5	18	17	8	13	24	7	5		
SE	-35	11-01	11	62	09-00	11	11	11	22	12	12	21	13	19	16	10	18		
UK	-17	12-02	17	33	06-98	13	15	20	16	15	12	3	15	3	14	9	12		

(a) The indicator is the arithmetic average of the balances (%) for the questions on business situation and recent and expected evolution of demand.

(n) Not seasonally adjusted.

TABLE 4: Consumer opinion on economic and financial conditions (s.a.) ^{(a)(b)}

		Since 01/1990						2005						2006					
		Min.		Ave.		Max.		Mar.	Apr.	May	June	July	Aug.	Sep.	Oct.	Nov.	Dec.	Jan.	Feb.
		Value	Date	Value	Date	Value	Date												
CONSUMER CONFIDENCE INDICATOR	EU	-27	03-93	-11	2	12-00	-10	-11	-12	-13	-12	-12	-12	-11	-11	-9	-9	-9	-8
	Euro area	-29	07-93	-12	2	05-00	-14	-13	-15	-15	-15	-15	-14	-13	-13	-11	-11	-10	-10
	BE	-27	08-93	-6	17	12-00	-1	-4	-11	-11	-11	-10	-14	-6	-9	-6	-4	-4	-5
	CZ	-36	03-98	-15	3	02-06	-2	-6	-3	-2	-2	-4	0	-1	2	-1	3	3	3
	DK	-11	10-90	7	18	01-06	17	14	14	14	13	13	15	16	17	18	18	18	16
	DE	-28	10-93	-11	6	05-00	-18	-15	-14	-15	-17	-15	-14	-11	-12	-8	-6	-6	-7
	EE	-56	04-93	-22	9	01-06	-5	-8	-8	-6	-2	-4	-10	1	3	7	9	9	9
	EL	-44	07-03	-30	-6	04-00	-33	-35	-31	-36	-32	-33	-35	-37	-36	-36	-31	-36	-36
	ES	-37	10-92	-11	6	03-00	-10	-11	-11	-12	-11	-12	-11	-11	-13	-10	-12	-12	-13
	FR	-34	08-93	-18	4	01-01	-14	-17	-21	-17	-16	-15	-13	-15	-16	-16	-15	-15	-13
	IE	-31	03-93	-4	19	01-00	7	1	-1	1	4	1	-4	-3	1	3	4	4	4
	IT	-38	04-93	-13	2	06-01	-18	-16	-17	-19	-21	-21	-21	-20	-17	-17	-19	-15	-15
	CY	-43	07-04	-30	-13	06-01	-35	-38	-35	-39	-41	-40	-40	-35	-35	-37	-36	-38	-38
	LV	-45	02-93	-24	-7	09-01	-11	-14	-12	-14	-16	-14	-15	-14	-12	-11	-8	-9	-9
	LT	-32	05-01	-13	-1	10-04	-5	-1	-4	-3	-4	-6	-7	-5	-1	-2	-2	-1	-1
	LU	-4	09-05	3	14	02-02	4	3	2	-2	0	-1	-4	-1	1	-1	2	-1	-1
	HU	-58	04-95	-28	0	08-02	-24	-28	-30	-32	-27	-26	-24	-26	-21	-17	-15	-10	-10
	MT	-34	05-05	-23	0	01-03	-28	-32	-34	-33	-33	-33	-29	-29	-29	-29	-24	-31	-31
	NL	-19	07-93	4	31	03-00	-3	2	-4	-5	-4	-7	-7	-2	-2	3	3	3	3
	AT	-16	04-96	-1	11	07-00	-2	0	-3	-3	-4	-4	-5	-3	-2	-3	2	-1	-1
	PL	-40	08-01	-29	-11	02-06	-18	-18	-21	-23	-23	-22	-20	-18	-15	-14	-13	-11	-11
	PT	-49	03-03	-23	-1	07-91	-31	-30	-31	-39	-42	-42	-41	-41	-40	-41	-41	-38	-38
	SI	-29	06-99	-19	-9	10-04	-15	-13	-13	-18	-18	-17	-21	-22	-26	-24	-16	-15	-15
	SK	-50	08-99	-30	-9	06-05	-13	-10	-12	-9	-12	-14	-24	-18	-12	-14	-14	-14	-14
	FI	6	11-01	15	23	02-00	17	14	14	10	12	15	13	16	17	17	14	16	16
	SE	-10	09-96	7	25	03-00	7	6	5	3	3	4	6	8	8	10	12	11	11
	UK	-28	10-92	-8	7	10-97	3	0	-3	-3	-1	-2	-3	-4	-4	-4	-4	-2	-2
	FINANCIAL SITUATION OF HOUSEHOLDS OVER NEXT 12 MONTHS	EU	-10	12-93	-1	5	04-01	0	0	-1	-1	-1	-1	-2	-2	-2	-1	0	0
Euro area		-11	07-93	-2	5	03-00	-3	-3	-4	-4	-4	-4	-5	-5	-5	-4	-3	-3	
BE		-9	12-93	2	13	08-00	6	4	3	3	3	3	1	4	4	5	4	4	
CZ		-32	02-98	-9	2	05-02	-3	-6	-2	-3	0	-2	-4	-1	-1	-2	1	1	1
DK		2	12-90	12	39	10-00	17	15	15	15	15	17	14	15	14	15	16	15	15
DE		-15	02-94	-5	4	05-00	-4	-4	-6	-6	-7	-6	-8	-5	-5	-5	-3	-3	-3
EE		-38	04-93	-10	15	02-06	3	1	2	4	9	5	-6	9	8	11	15	15	15
EL		-31	08-92	-15	10	04-00	-19	-20	-17	-22	-18	-20	-24	-24	-22	-23	-19	-21	-21
ES		-16	10-92	1	10	10-99	-1	-2	-1	-2	0	0	-1	-1	-3	1	-3	-3	-3
FR		-12	12-95	-1	6	01-01	-1	-2	-3	-2	-2	-1	0	-5	-6	-4	-3	-3	-3
IE		-13	02-93	1	16	01-00	4	-1	-1	1	1	-1	-5	-2	1	2	3	2	2
IT		-15	04-93	-1	7	07-01	-4	-2	-2	-3	-4	-4	-4	-4	-3	-2	-4	-3	-3
CY		-35	06-04	-16	0	06-01	-25	-30	-27	-25	-32	-31	-32	-32	-30	-32	-31	-30	-30
LV		-29	09-93	-7	9	08-02	6	4	6	2	3	2	-1	2	3	4	7	8	8
LT		-10	10-01	0	7	06-05	4	6	2	7	5	4	3	3	6	4	5	7	7
LU		0	10-05	5	12	06-02	9	3	7	3	2	2	1	0	2	0	2	0	0
HU		-63	04-95	-21	16	08-02	-10	-13	-16	-18	-11	-9	-9	-11	-7	-2	1	7	7
MT		-35	05-05	-21	3	01-03	-28	-33	-35	-31	-30	-27	-26	-27	-28	-25	-21	-28	-28
NL		-11	12-04	3	16	12-99	-6	-2	-5	-7	-3	-10	-10	-8	-8	-6	-6	-4	-4
AT		-18	04-96	-4	4	04-99	-2	-2	-3	-3	-4	-4	-8	-3	-5	-2	1	-1	-1
PL		-20	08-01	-10	1	02-06	-3	-3	-5	-8	-8	-6	-5	-6	-2	-3	-1	1	1
PT		-26	03-03	-8	11	01-92	-15	-15	-14	-21	-23	-23	-22	-22	-22	-21	-21	-19	-19
SI		-30	06-99	-11	-2	11-96	-6	-4	-4	-10	-9	-6	-11	-12	-18	-17	-9	-10	-10
SK		-44	08-99	-24	-7	06-05	-10	-8	-9	-7	-9	-13	-22	-16	-9	-9	-10	-11	-11
FI		-8	04-93	6	13	10-04	11	11	11	10	12	12	9	11	12	11	9	11	11
SE		-13	09-96	8	18	07-02	16	12	14	14	13	13	13	14	15	16	17	13	13
UK		-23	03-90	3	16	09-02	11	10	10	9	10	11	10	8	8	8	9	12	12
GENERAL ECONOMIC SITUATION OVER NEXT 12 MONTHS		EU	-32	03-93	-12	1	04-00	-10	-12	-15	-15	-17	-15	-14	-14	-15	-12	-11	-10
	Euro area	-35	03-93	-13	4	04-00	-13	-14	-17	-17	-19	-17	-16	-15	-17	-12	-11	-11	
	BE	-46	07-93	-11	20	06-00	2	-5	-16	-18	-18	-13	-22	-8	-11	-9	-7	-7	
	CZ	-40	09-97	-11	8	11-05	2	0	1	3	3	3	8	5	8	2	6	4	
	DK	-23	02-99	-2	23	07-01	13	5	6	6	2	5	6	8	9	6	8	9	9
	DE	-41	03-93	-16	6	02-99	-23	-21	-20	-21	-24	-20	-19	-14	-16	-8	-5	-6	
	EE	-38	04-93	-3	25	03-03	11	7	8	5	9	8	-4	15	16	22	23	25	
	EL	-37	12-03	-17	17	01-00	-19	-24	-20	-29	-21	-25	-24	-31	-27	-28	-24	-26	
	ES	-38	10-92	-5	11	08-97	-5	-7	-9	-9	-7	-8	-7	-7	-14	-9	-10	-11	
	FR	-37	01-91	-17	5	01-01	-10	-17	-26	-15	-22	-17	-11	-22	-25	-22	-21	-21	
	IE	-33	12-02	-2	22	01-00	6	-3	-5	-1	-7	-15	-10	-4	-1	-1	-1	-1	
	IT	-40	04-93	-9	13	02-95	-12	-10	-14	-20	-20	-19	-20	-17	-14	-11	-16	-12	
	CY	-45	06-04	-23	-7	05-01	-33	-38	-35	-31	-35	-34	-32	-24	-22	-24	-23	-24	
	LV	-27	06-95	-7	11	05-03	9	3	5	0	-3	-2	-3	-4	-5	1	5	4	
	LT	-18	05-01	2	16	10-04	8	11	9	8	6	1	-4	-2	4	3	3	2	
	LU	-28	09-05	-8	7	02-02	0	-5	-8	-20	-15	-19	-28	-24	-18	-23	-18	-16	
	HU	-53	04-95	-14	19	08-02	-8	-13	-16	-18	-11	-7	-8	-8	-6	0	2	10	
	MT	-32	05-05	-17	11	11-02	-26	-29	-32	-31	-28	-26	-25	-23	-22	-20	-15	-24	
	NL	-42	03-93	-8	26	03-00	-4	4	-6	-11	-6	-14	-12	-6	-6	-2	-2	-2	
	AT	-26	04-96	-6	8	11-99	-4	-4	-8	-7	-10	-10	-13	-11	-9	-5	0	-6	
	PL	-35	08-01	-20	5	02-06	-7	-5	-11	-12	-8	-8	-8	-3	-1	-1	3	5	
	PT	-52	03-03	-17															

TABLE 4 (continued): Consumer opinion on economic and financial conditions (s.a.)^(a)

		Since 01/1990						2005						2006					
		Min.		Ave.		Max.		Mar.	Apr.	May	June	July	Aug.	Sep.	Oct.	Nov.	Dec.	Jan.	Feb.
		Value	Date	Value	Date	Value	Date												
SAVINGS OVER NEXT 12 MONTHS	EU	-15	08-93	-4	4	04-01	-4	-4	-4	-3	-4	-4	-4	-5	-4	-5	-5	-3	
	Euro area	-14	08-93	-5	4	03-01	-9	-8	-7	-7	-9	-8	-9	-9	-8	-9	-9	-8	
Component of the consumer confidence indicator	BE	-2	12-93	13	31	06-98	16	17	13	14	12	11	6	10	7	15	15	10	
	CZ	-16	03-98	-4	11	08-03	5	0	-1	4	0	1	10	3	9	6	6	10	
	DK	-3	01-90	23	39	04-05	38	39	38	39	39	32	36	34	38	36	34	31	
	DE	-5	03-03	7	23	08-90	0	2	1	-1	-2	1	-1	0	1	1	0	2	
	EE	-69	10-93	-49	-11	08-01	-28	-32	-33	-29	-24	-27	-31	-23	-22	-16	-17	-19	
	EL	-57	07-95	-44	-23	01-00	-45	-48	-48	-47	-47	-45	-48	-47	-47	-48	-45	-48	
	ES	-34	01-90	-20	0	07-00	-20	-23	-22	-25	-25	-26	-27	-23	-23	-18	-25	-30	
	FR	-36	03-96	-23	-7	04-04	-14	-18	-15	-14	-13	-12	-11	-15	-17	-20	-19	-16	
	IE	-32	03-93	-1	28	02-02	21	19	17	20	19	21	18	13	17	24	23	21	
	IT	-39	10-04	-16	2	03-91	-36	-29	-24	-21	-29	-32	-29	-28	-26	-33	-30	-24	
	CY	-55	06-02	-42	-13	06-01	-38	-42	-33	-49	-46	-48	-42	-44	-42	-45	-43	-48	
	LV	-90	03-96	-55	13	01-94	-50	-52	-48	-50	-50	-49	-52	-49	-44	-48	-46	-48	
	LT	-55	05-01	-46	-35	04-05	-43	-35	-42	-42	-38	-42	-44	-38	-38	-37	-41	-37	
	LU	40	05-05	48	58	10-05	44	46	40	53	47	48	49	58	52	54	54	46	
	HU	-70	11-95	-53	-19	01-00	-44	-47	-48	-50	-44	-46	-45	-47	-41	-39	-43	-38	
	MT	-51	02-06	-37	-15	11-02	-37	-39	-43	-40	-47	-51	-45	-46	-47	-51	-49	-51	
	NL	17	09-05	38	55	10-99	22	25	24	29	21	22	17	18	21	24	24	26	
	AT	-11	11-00	32	55	03-02	27	29	29	29	33	30	32	36	39	29	35	32	
	PL	-67	09-03	-50	-22	09-01	-49	-50	-49	-48	-53	-53	-51	-50	-49	-46	-48	-44	
	PT	-55	12-05	-35	-14	01-92	-51	-49	-48	-51	-51	-54	-53	-55	-55	-55	-55	-54	
SI	-52	06-99	-28	-15	06-03	-18	-22	-20	-25	-21	-22	-17	-21	-21	-24	-15	-18		
SK	-70	08-01	-41	-29	08-00	-41	-34	-35	-32	-37	-31	-40	-38	-33	-33	-36	-34		
FI	19	01-96	38	53	05-04	51	49	53	50	49	51	51	51	51	53	47	52		
SE	11	06-98	29	46	06-00	33	29	26	29	31	29	31	35	31	34	33	34		
UK	-26	10-92	-5	19	02-06	17	17	12	14	16	17	16	15	14	14	16	19		
UNEMPLOYMENT OVER NEXT 12 MONTHS	EU	-2	12-00	26	56	03-93	27	26	28	30	27	27	26	23	23	19	19	19	
	Euro area	-3	01-01	28	60	08-93	31	29	31	33	30	29	28	23	23	19	19	19	
Component of the consumer confidence indicator	BE	-19	12-00	28	63	10-93	30	32	43	44	42	41	41	31	34	33	27	27	
	CZ	1	01-06	34	64	03-99	14	18	9	13	9	17	14	11	8	8	1	4	
	DK	-19	11-97	7	38	12-92	-1	3	3	5	3	2	-5	-5	-7	-13	-15	-11	
	DE	-3	01-01	30	58	10-93	44	37	31	35	34	33	30	26	28	19	18	23	
	EE	-15	02-06	33	80	04-93	6	6	8	5	0	2	1	-2	-8	-12	-15	-15	
	EL	24	04-90	44	62	12-98	47	47	40	46	42	41	43	44	46	44	38	48	
	ES	-8	03-00	18	67	01-93	12	11	13	13	12	14	10	12	13	12	12	9	
	FR	-14	01-01	31	64	03-03	32	32	40	38	27	29	32	17	17	17	16	12	
	IE	-29	12-99	15	58	04-92	4	11	17	12	4	8	15	14	12	13	9	7	
	IT	-2	06-01	27	70	04-93	22	22	26	32	32	31	29	28	24	21	26	21	
	CY	26	05-01	38	53	09-05	46	43	46	50	50	49	53	39	47	47	48	50	
	LV	-4	01-06	26	54	01-93	7	12	9	8	12	5	6	5	1	0	-4	-2	
	LT	-24	01-06	7	46	05-01	-11	-13	-15	-17	-13	-13	-15	-17	-23	-22	-24	-23	
	LU	14	02-02	34	44	06-03	37	33	31	42	36	35	36	37	30	34	31	32	
	HU	-3	07-98	28	59	02-93	33	36	40	44	41	40	35	37	32	28	20	18	
	MT	-2	01-03	19	34	01-04	22	29	28	29	28	27	20	20	20	22	12	23	
	NL	-35	07-98	18	77	03-93	25	19	29	33	29	26	23	11	15	4	4	7	
	AT	-9	11-00	27	49	12-96	29	24	30	29	33	33	32	34	32	34	28	31	
	PL	4	02-06	35	64	05-01	15	14	21	24	24	20	16	13	9	7	7	4	
	PT	-10	08-97	33	73	10-93	40	40	42	48	55	53	51	51	51	53	51	49	
SI	7	09-01	26	44	09-05	31	28	29	31	33	34	44	43	42	36	32	24		
SK	-4	01-06	24	68	08-99	-1	-3	-3	-4	-3	2	8	-1	-3	1	-4	-3		
FI	-31	01-95	-1	42	07-91	3	7	9	14	13	7	6	0	-4	-3	1	1		
SE	-26	03-00	7	39	11-01	18	13	17	24	24	21	14	13	16	9	8	7		
UK	-11	04-98	21	53	02-91	16	21	23	22	21	24	24	25	25	23	26	26		
FINANCIAL SITUATION OF HOUSEHOLDS OVER LAST 12 MONTHS	EU	-19	01-94	-10	-2	05-00	-11	-11	-12	-12	-13	-12	-12	-12	-12	-10	-10		
	Euro area	-20	02-03	-11	-1	05-90	-14	-14	-15	-15	-16	-15	-15	-15	-14	-13	-13		
BE	-16	12-93	-5	4	11-00	-4	-5	-8	-4	-7	-7	-7	-6	-6	-6	-3	-5		
CZ	-30	02-98	-15	-5	05-96	-10	-15	-11	-8	-10	-11	-11	-7	-8	-9	-7	-5		
DK	-5	04-01	7	16	02-05	16	14	10	10	12	14	12	14	14	13	15	13		
DE	-31	12-02	-12	4	05-90	-11	-12	-12	-13	-15	-12	-13	-13	-11	-12	-9	-9		
EE	-54	04-93	-16	13	01-06	3	0	-1	1	6	5	-3	7	6	7	13	11		
EL	-43	01-93	-28	-6	04-00	-28	-28	-27	-34	-31	-31	-29	-32	-31	-29	-30	-30		
ES	-28	01-94	-8	4	04-00	-11	-10	-10	-9	-9	-10	-10	-10	-11	-8	-10	-9		
FR	-18	06-96	-10	-2	01-01	-13	-12	-14	-14	-14	-13	-12	-16	-18	-15	-14	-13		
IE	-25	02-93	-7	11	04-00	0	-6	-3	-5	-4	-5	-7	-9	-3	-2	1	-2		
IT	-30	02-04	-14	-1	05-90	-23	-23	-26	-27	-27	-25	-23	-24	-21	-22	-23	-21		
CY	-36	10-05	-19	-5	07-03	-25	-29	-29	-27	-31	-29	-32	-36	-35	-35	-34	-33		
LV	-57	01-93	-22	2	02-06	-5	-7	-3	-8	-8	-6	-8	-6	-8	-3	-4	2		
LT	-29	06-01	-12	3	12-05	-3	-1	-1	0	2	-1	-2	-1	2	3	1	2		
LU	-3	10-05	1	8	01-02	-1	-1	4	1	1	0	-1	-3	0	0	2	1		
HU	-65	11-95	-36	0	08-02	-22	-26	-29	-30	-25	-25	-25	-24	-23	-21	-17	-16		
MT	-41	05-05	-29	-11	01-03	-35	-39	-41	-38	-37	-36	-37	-37	-38	-35	-32	-35		
NL	-25	03-05	0	17	02-00	-25	-23	-21	-18	-19	-21	-22	-20	-16	-18	-15	-19		
AT	-23	11-02	-13	-2	08-99	-14	-16	-16	-16	-15	-15	-18	-15	-17	-17	-13	-12		
PL	-35	08-01	-24	-10	02-06	-15	-15	-13	-18	-19	-17	-16	-19	-14	-15	-13	-10		
PT	-29	04-03	-13	3	01-92	-21	-19	-20	-22	-24	-24	-25	-23	-23	-22				

TABLE 4 (continued): Consumer opinion on economic and financial conditions (s.a.)^(a)

		Since 01/1990						2005						2006					
		Min.		Ave.		Max.		Mar.	Apr.	May	June	July	Aug.	Sep.	Oct.	Nov.	Dec.	Jan.	Feb.
		Value	Date	Value	Date	Value	Date												
GENERAL	EU	-55	03-93	-27	-4	05-00	-29	-30	-31	-34	-35	-33	-33	-34	-33	-30	-28	-27	
ECONOMIC	Euro area	-58	07-93	-29	-2	05-00	-34	-36	-37	-40	-41	-39	-38	-39	-37	-34	-31	-31	
SITUATION	BE	-61	08-93	-25	22	12-00	-11	-17	-29	-37	-36	-32	-41	-30	-28	-27	-23	-23	
OVER LAST	CZ	-54	12-97	-20	3	10-95	-7	-10	-7	-3	-5	-4	-1	-2	-1	-1	2	1	
12 MONTHS	DK	-25	04-93	1	26	02-06	19	16	15	15	18	20	19	22	23	22	25	26	
	DE	-60	05-03	-28	12	01-90	-39	-40	-37	-42	-42	-39	-40	-38	-36	-31	-26	-24	
	EE	-72	10-92	-11	26	01-06	12	5	8	8	11	7	6	12	17	19	26	24	
	EL	-50	05-90	-31	6	05-00	-30	-30	-28	-38	-32	-37	-34	-38	-35	-34	-34	-34	
	ES	-61	08-93	-16	13	03-00	-16	-18	-16	-18	-16	-20	-21	-22	-21	-17	-17	-21	
	FR	-57	10-96	-36	-1	01-01	-37	-40	-42	-38	-46	-42	-37	-47	-50	-46	-43	-45	
	IE	-59	03-93	-4	42	08-99	7	-1	-2	-3	2	-4	-12	-9	-2	4	6	3	
	IT	-74	04-93	-39	-8	05-90	-47	-51	-55	-61	-60	-54	-55	-54	-46	-44	-47	-44	
	CY	-41	07-04	-26	-13	01-02	-32	-38	-37	-30	-31	-31	-32	-30	-28	-28	-27	-24	
	LV	-59	01-93	-24	3	12-03	-6	-11	-6	-13	-14	-16	-16	-17	-16	-15	-11	-11	
	LT	-41	05-01	-10	6	10-04	3	5	2	4	4	-1	-6	-3	3	2	2	4	
	LU	-36	06-03	-23	-3	01-02	-17	-21	-17	-24	-24	-26	-27	-28	-26	-25	-23	-22	
	HU	-71	04-95	-32	6	09-02	-22	-28	-32	-33	-25	-23	-21	-23	-23	-21	-15	-11	
	MT	-45	05-05	-28	-2	02-03	-34	-39	-45	-42	-42	-39	-37	-37	-33	-32	-31	-34	
	NL	-73	03-03	-13	45	03-00	-35	-30	-32	-37	-39	-41	-41	-32	-28	-25	-22	-25	
	AT	-50	02-97	-24	8	07-00	-25	-22	-24	-26	-29	-31	-31	-30	-27	-24	-19	-19	
	PL	-55	09-01	-37	-1	02-06	-20	-17	-20	-22	-19	-14	-18	-15	-10	-11	-9	-1	
	PT	-60	03-03	-25	13	10-91	-49	-46	-44	-49	-54	-55	-55	-55	-53	-52	-52	-48	
	SI	-39	09-98	-28	-14	04-05	-22	-14	-16	-22	-24	-22	-31	-29	-28	-28	-23	-21	
	SK	-69	10-99	-40	-10	06-05	-11	-12	-13	-10	-13	-13	-21	-23	-19	-18	-20	-19	
	FI	-65	01-92	-4	30	08-98	7	2	-1	-6	-4	2	-2	4	4	3	0	3	
	SE	-25	04-03	-6	25	03-00	-4	-6	-6	-9	-10	-6	-7	-6	-3	3	5	2	
	UK	-67	11-92	-25	5	10-97	-13	-13	-14	-19	-17	-19	-23	-22	-25	-27	-24	-24	
SAVINGS	EU	:	:	:	:	:	:	:	:	:	:	:	:	:	:	:	:	:	
AT PRESENT ^(c)	Euro area	:	:	:	:	:	:	:	:	:	:	:	:	:	:	:	:	:	
	BE	-45	12-03	41	70	02-01	-29	-28	-10	-16	-20	-28	-32	-30	-32	-28	-31	-32	
	CZ	-35	01-03	-15	15	03-01	-18	-20	-20	-21	-16	-18	-12	-9	-9	-10	0	-5	
	DK	51	01-90	65	78	07-92	71	69	73	73	69	67	69	68	74	72	74	68	
	DE	29	11-92	45	61	09-02	42	44	42	45	43	45	45	46	47	46	45	46	
	EE	-58	09-96	-36	-14	08-01	-23	-23	-27	-23	-23	-24	-26	-20	-19	-17	-17	-20	
	EL	-70	10-05	-46	-18	01-00	-61	-60	-60	-62	-63	-59	-64	-70	-65	-63	-60	-65	
	ES	-33	12-03	26	59	08-96	-19	-20	-21	-24	-21	-25	-27	-26	-25	-24	-25	-30	
	FR	2	12-05	41	61	06-95	15	17	12	13	9	11	13	7	8	2	9	14	
	IE	-2	03-93	21	56	12-01	44	38	34	37	37	39	31	32	35	39	40	39	
	IT	26	06-04	45	66	01-06	47	46	46	56	54	51	54	54	58	59	66	65	
	CY	-37	07-04	-13	9	06-01	9	-7	-4	-11	-16	-23	-7	-11	-22	-23	-12	-24	
	LV	-78	12-95	-58	-28	09-01	-49	-53	-53	-55	-53	-50	-56	-56	-52	-55	-52	-51	
	LT	-50	10-05	-39	-27	05-02	-40	-40	-44	-43	-46	-48	-49	-50	-48	-46	-48	-45	
	LU	45	04-03	54	63	01-03	59	57	50	57	56	57	55	57	54	54	57	53	
	HU	-83	11-95	-65	-28	12-00	-54	-52	-54	-57	-52	-55	-53	-54	-52	-53	-47	-43	
	MT	-56	08-05	-40	-24	01-03	-41	-43	-48	-46	-54	-56	-50	-50	-50	-54	-52	-51	
	NL	47	06-91	61	70	09-96	62	63	59	64	62	62	63	63	61	61	63	63	
	AT	17	12-96	42	64	09-02	51	52	53	51	54	54	55	56	57	50	55	52	
	PL	-49	09-01	-36	-23	02-06	-30	-34	-33	-33	-34	-38	-32	-33	-26	-32	-24	-23	
	PT	-64	01-06	-40	-13	01-92	-62	-63	-60	-63	-64	-63	-64	-64	-64	-63	-64	-64	
	SI	-25	09-97	-12	-1	08-04	-5	-3	-1	-7	-5	-2	-3	-3	-7	-12	-6	-7	
	SK	-55	10-04	-47	-36	03-00	-46	-47	-48	-47	-49	-50	-51	-54	-52	-50	-48	-46	
	FI	-23	04-94	4	22	10-92	16	18	13	14	13	14	12	18	13	16	12	18	
	SE	-9	09-01	6	20	01-00	-1	1	2	3	2	5	4	8	6	9	11	9	
	UK	-16	03-03	12	36	05-90	28	28	25	25	26	22	26	26	22	24	27	27	
MAJOR	EU	-21	07-93	-16	-10	03-00	-17	-16	-18	-17	-17	-17	-18	-17	-17	-17	-15	-16	
PURCHASES	Euro area	-21	07-93	-17	-12	03-00	-18	-18	-19	-18	-18	-18	-19	-19	-18	-18	-16	-18	
OVER NEXT	BE	-29	10-96	-15	-6	10-03	-14	-16	-14	-14	-14	-14	-13	-13	-12	-11	-11	-12	
12 MONTHS	CZ	-36	01-01	-23	-6	11-05	-17	-8	-16	-9	-10	-11	-14	-12	-6	-9	-7	-9	
	DK	-14	01-93	-6	3	01-06	0	1	-2	-4	-1	1	0	1	-3	-2	3	2	
	DE	-39	02-03	-26	-14	01-90	-29	-31	-30	-29	-30	-28	-29	-29	-26	-27	-23	-24	
	EE	-64	10-92	-25	-3	12-05	-15	-11	-16	-14	-8	-9	-11	-3	-10	-3	-8	-3	
	EL	-60	10-05	-23	5	06-03	-21	-21	-22	-18	-32	-32	-49	-60	-47	-37	-34	-37	
	ES	-48	11-93	-24	-7	11-00	-23	-20	-23	-20	-22	-24	-24	-24	-24	-22	-24	-28	
	FR	-6	12-05	-1	1	09-99	-5	-4	-5	-5	-5	-5	-5	-6	-6	-4	-5		
	IE	-20	05-93	-9	2	12-00	-3	-6	-3	-4	-5	-6	-7	-5	-7	-2	-4	-7	
	IT	-23	10-92	-17	-9	04-05	-11	-9	-14	-15	-12	-13	-14	-12	-17	-15	-13	-18	
	CY	-5	03-04	11	39	03-03	-4	2	10	7	4	-3	5	-3	-5	4	0	10	
	LV	-84	03-96	-40	18	01-06	6	1	5	4	6	14	17	16	16	15	18	18	
	LT	-18	12-02	-9	3	02-06	-5	-6	-4	-3	-3	-2	-3	-2	1	2	2	3	
	LU	-19	06-05	-13	-6	01-02	-12	-12	-18	-19	-11	-13	-17	-11	-11	-15	-12	-18	
	HU	-69	06-95	-37	-8	08-02	-22	-24	-29	-28	-25	-24	-22	-24	-19	-17	-15	-12	
	MT	-21	06-04	-10	-2	03-05	-2	-5	-3	-3	-6	-11	-9	-14	-12	-13	-16	-11	
	NL	-25	03-03	-14	-4	11-98	-20	-17	-22	-17	-19	-16	-19	-17	-16	-16	-13	-16	
	AT	-26	11-04	-17	-4	11-00	-19	-21	-21	-16	-21	-18	-26	-23	-23	-20	-18	-17	
	PL	-25	09-01	-8	1	09-04													

TABLE 4 (continued) : Consumer opinion on economic and financial conditions (s.a.)^(a)

		Since 01/1990			2005								2006					
		Min.		Ave.	Max.		Mar.	Apr.	May	June	July	Aug.	Sep.	Oct.	Nov.	Dec.	Jan.	Feb.
		Value	Date	Value	Date													
MAJOR PURCHASES AT PRESENT	EU	-22	07-93	-11	6	01-00	-12	-13	-13	-14	-14	-13	-14	-14	-13	-12	-9	-10
	Euro area	-28	03-03	-15	6	03-99	-18	-20	-18	-21	-21	-20	-21	-20	-19	-18	-14	-17
	BE	-40	06-97	-4	26	12-00	19	20	16	11	12	19	4	15	15	15	18	18
	CZ	-33	05-95	1	34	07-03	13	24	20	25	18	21	22	20	13	13	22	19
	DK	-27	01-93	-7	10	09-97	1	-7	-10	-11	-5	-2	-3	-2	-1	-8	-1	-1
	DE	-31	11-02	-11	6	04-99	-13	-18	-14	-17	-14	-12	-15	-12	-12	-8	0	-4
	EE	0	04-01	15	48	04-04	36	38	38	42	39	37	33	40	37	38	44	38
	EL	-68	10-05	-36	-10	01-01	-37	-44	-45	-59	-50	-51	-58	-68	-52	-50	-42	-42
	ES	-64	06-93	-18	26	11-99	-19	-22	-22	-23	-23	-26	-26	-22	-25	-24	-24	-31
	FR	-39	12-95	-14	14	07-00	-11	-9	-12	-15	-19	-16	-13	-15	-18	-17	-16	-12
	IE	-22	04-92	14	40	09-97	28	22	26	24	19	19	17	15	17	17	22	24
	IT	-64	11-96	-33	-2	05-90	-51	-53	-44	-41	-47	-50	-45	-42	-40	-43	-39	-48
	CY	-19	10-01	0	24	11-04	-9	-5	1	1	-3	-9	-10	-9	-12	-8	1	1
	LV	-81	06-96	-40	19	11-05	-1	2	2	2	1	11	9	19	19	8	10	14
	LT	-10	05-01	21	50	02-06	39	34	36	39	38	37	40	43	45	38	45	50
	LU	-18	06-04	-9	0	08-04	-8	-8	-4	0	-9	-10	-10	-2	-3	-5	-8	-11
	HU	-87	06-96	-55	-9	10-02	-17	-15	-21	-18	-14	-17	-14	-17	-12	-18	-10	-10
	MT	-14	07-05	10	37	09-03	8	2	-3	-7	-14	-10	-3	-4	-1	-8	4	-1
	NL	-39	04-03	5	54	02-00	-26	-26	-26	-33	-29	-29	-32	-34	-33	-31	-30	-28
	AT	-14	07-02	7	29	08-99	-6	-5	-3	-2	-7	-5	-10	-9	-2	3	0	-2
	PL	-27	11-01	-9	7	02-06	-4	-2	-2	-1	-3	-1	-2	-7	2	1	6	7
PT	-64	09-05	-33	-2	01-92	-57	-58	-57	-60	-58	-62	-64	-61	-61	-62	-62	-61	
SI	-50	04-97	-21	10	05-99	-8	-5	-1	-1	3	-7	-8	-7	-2	-8	-12	-2	
SK	-25	02-04	-10	4	08-99	-15	-15	-10	-11	-10	-8	-14	-15	-11	-13	-12	-15	
FI	-27	04-90	17	39	08-03	26	24	26	24	26	26	22	26	24	21	23	22	
SE	2	11-95	19	36	08-05	30	29	27	27	28	36	31	35	28	32	34	30	
UK	-22	05-90	8	28	11-02	12	12	5	6	9	7	9	4	8	6	8	10	
PRICE TRENDS OVER NEXT 12 MONTHS	EU	6	06-03	23	49	01-91	9	10	11	11	16	14	16	16	15	14	16	
	Euro area	3	04-04	23	51	01-91	9	10	12	13	17	14	15	17	17	15	17	
	BE	-4	09-02	20	46	10-01	15	20	17	18	17	17	23	18	16	15	15	18
	CZ	11	05-05	44	72	03-98	18	14	11	15	24	25	25	16	17	22	16	23
	DK	-29	08-93	-11	28	08-02	-15	-9	-14	-14	-8	-7	6	-9	2	5	3	4
	DE	5	12-04	32	58	03-91	9	9	9	11	19	14	18	16	21	20	15	19
	EE	23	04-93	48	88	05-04	51	56	51	55	57	60	75	52	44	41	39	38
	EL	0	03-04	38	60	05-90	19	17	17	36	33	36	38	38	39	33	27	32
	ES	-4	11-98	15	36	01-02	18	23	28	27	27	30	30	31	30	25	23	27
	FR	-13	08-97	11	54	01-91	13	11	17	15	20	15	10	20	19	19	17	18
	IE	6	01-94	22	42	10-00	15	21	24	23	27	30	36	28	18	20	24	29
	IT	-23	12-04	21	62	02-91	-12	-9	-7	-13	-9	-13	-8	-3	-11	-14	-7	-8
	CY	14	02-06	46	68	09-02	36	45	43	38	47	47	47	28	28	29	16	14
	LV	16	03-00	33	70	03-04	39	45	46	52	50	49	50	53	49	49	46	50
	LT	14	02-03	44	75	05-04	51	48	56	55	62	64	65	60	55	57	56	60
	LU	2	06-03	14	26	03-03	16	14	19	20	19	21	25	22	24	24	20	16
	HU	31	02-06	50	65	05-95	46	49	47	50	49	46	47	49	44	38	32	31
	MT	3	12-02	21	42	08-05	23	24	38	36	36	42	36	34	33	21	26	29
	NL	-28	12-02	24	60	01-91	16	4	8	12	13	16	18	14	21	15	19	22
	AT	-19	12-95	15	41	09-01	21	26	26	29	31	29	35	29	29	25	26	26
	PL	7	04-05	31	54	04-04	16	7	19	21	24	25	32	28	25	15	21	14
PT	-9	08-97	33	56	03-03	37	36	32	50	48	47	47	48	46	39	46	42	
SI	16	01-05	41	62	04-00	19	19	17	28	31	29	30	31	40	39	37	37	
SK	20	05-05	50	78	11-02	23	26	20	21	21	32	49	41	34	36	37	40	
FI	-21	12-95	11	40	09-01	21	24	20	24	25	26	29	26	23	25	28	26	
SE	-14	03-05	12	34	04-03	-14	3	0	4	8	13	5	10	14	20	9	14	
UK	5	03-05	26	57	09-90	5	7	6	7	11	9	16	11	9	13	14	12	
PRICE TRENDS OVER LAST 12 MONTHS	EU	-5	03-99	23	46	01-03	28	29	27	27	28	27	30	30	28	28	27	28
	Euro area	-4	01-99	28	62	01-03	38	39	37	36	38	37	39	40	38	37	36	37
	BE	-1	06-98	35	56	09-05	53	56	54	52	53	53	56	56	51	50	55	51
	CZ	-33	08-03	23	63	03-98	-16	-17	-22	-16	-13	-15	-13	-9	-18	-16	-17	-19
	DK	-51	09-93	-25	-1	02-90	-33	-28	-28	-29	-30	-24	-21	-24	-23	-24	-24	-24
	DE	-3	03-99	31	74	08-02	22	25	20	21	25	25	32	31	31	29	27	29
	EE	-1	04-03	34	58	09-05	52	52	53	50	49	52	58	57	53	45	46	47
	EL	5	06-99	41	76	08-03	66	61	55	64	66	64	69	70	69	70	64	70
	ES	-5	06-97	31	65	03-03	53	52	52	52	52	53	53	51	52	51	53	54
	FR	-23	01-99	14	54	01-04	51	49	50	51	49	46	43	45	47	46	41	43
	IE	-3	07-97	30	66	12-02	40	42	38	36	37	44	45	45	35	38	36	34
	IT	0	05-97	36	70	11-03	41	43	46	42	45	37	37	41	34	32	36	34
	CY	21	08-01	42	62	02-04	41	51	50	46	42	50	60	50	46	53	44	38
	LV	-31	09-96	25	68	12-05	53	55	62	62	58	60	63	64	68	68	64	65
	LT	-17	10-03	12	40	09-05	24	25	32	26	31	35	40	37	36	37	33	32
	LU	21	01-02	39	47	11-05	41	44	37	44	38	41	44	44	47	47	44	41
	HU	9	12-02	40	71	06-95	20	23	22	25	20	18	19	21	16	15	9	9
	MT	18	06-04	38	60	08-05	35	39	56	59	54	60	51	53	51	51	44	40
	NL	-3	04-90	28	89	12-02	31	33	30	20	24	27	30	27	25	21	26	24
	AT	-48	02-96	7	46	01-03	39	42	40	38	40	36	40	38	39	38	34	32
	PL	-4	05-03	19	45	10-04	31	24	29	29	24	27	29	31	22	19	18	13
PT	-6	08-97	38	61	10-90	41	42	40	42	47	48	49	46	46	42	44	45	
SI	10	02-06	41	65	06-02	19	21	17	16	25	26	22	25	21	15	11	10	
SK	11	08-05	41	69	10-99	14	14	12	13	13	11	20						

TABLE 5: Monthly survey of retail trade (s.a.) ^{(a)(b)}

		Since 01/1990					2005										2006	
		Min.		Ave.	Max.													
		Value	Date		Value	Date	Mar.	Apr.	May	June	July	Aug.	Sep.	Oct.	Nov.	Dec.	Jan.	Feb.
RETAIL TRADE CONFIDENCE INDICATOR	EU	-20	01-93	-7	4	07-90	-10	-10	-11	-12	-13	-10	-8	-7	-10	-6	-6	-5
	Euro area	-23	01-93	-9	8	08-90	-11	-10	-11	-11	-11	-10	-7	-5	-8	-5	-6	-5
	BE	-25	05-93	-6	13	04-90	-10	-4	-10	-7	-10	-8	-9	0	-7	-4	-5	-2
	CZ	-1	02-99	14	26	08-02	19	14	15	16	16	15	19	20	24	22	15	21
	DK	-6	10-01	17	37	11-94	31	29	28	25	26	27	26	27	25	29	25	26
	DE	-41	01-03	-17	19	12-90	-33	-29	-31	-26	-28	-28	-24	-23	-29	-26	-23	-16
	EE	-1	04-03	18	30	04-04	22	25	22	22	28	21	22	24	23	26	26	25
	EL	-24	06-95	2	27	03-04	9	10	4	2	-1	1	5	5	4	12	11	19
	ES	-36	02-93	-7	10	06-00	-7	-2	-1	-6	-4	-4	-5	-4	-3	-5	-10	-13
	FR	-37	04-97	-16	6	10-04	0	1	-3	-5	-11	-9	-6	-5	-3	0	-10	-9
	IE	-21	05-03	3	24	06-00	-3	-11	-8	-1	-5	2	-10	-7	0	0	-2	-3
	IT	-19	10-96	8	39	10-95	12	3	13	6	16	19	24	30	22	26	27	19
	CY	-14	04-03	-5	5	04-05	0	5	1	-2	1	-3	-5	3	1	1	-4	-1
	LV	1	10-96	9	19	06-03	11	11	13	15	17	17	16	17	18	16	18	17
	LT	-25	09-00	-4	26	06-04	-5	-1	3	7	14	13	12	13	17	15	17	14
	HU	-28	05-05	-8	9	11-97	-28	-24	-28	-25	-17	-26	-13	-12	-12	-12	-13	-14
	NL	-16	12-03	12	30	10-99	-6	-4	-10	-8	-10	-9	-7	-3	-3	7	7	6
	AT	-29	03-03	-13	4	07-00	-10	-9	-15	-14	-13	-13	-10	-8	-9	-8	-4	-2
	PL	-19	01-02	-6	7	07-98	-7	-8	-7	-6	-6	-5	-5	-5	-1	-4	-4	-5
	PT	-27	01-03	-8	4	01-99	-7	-7	-10	-13	-17	-19	-19	-17	-20	-11	-6	-15
SI	3	01-01	11	23	04-99	8	14	13	13	18	16	16	16	19	17	21	16	
SK	-17	10-93	8	34	11-98	12	15	12	20	16	12	15	16	22	24	14	18	
FI	-17	11-00	-3	10	05-04	-4	-1	1	6	4	2	7	10	9	6	6	8	
SE	-8	09-01	7	30	02-06	0	1	-2	3	7	11	13	14	17	21	27	30	
UK	-32	11-05	-5	20	06-04	-13	-19	-22	-28	-30	-21	-22	-23	-32	-23	-14	-17	
PRESENT BUSINESS SITUATION	EU	-25	12-94	-7	18	04-90	-15	-13	-17	-17	-18	-15	-13	-12	-15	-9	-6	-5
	Euro area	-29	12-94	-9	21	11-90	-18	-14	-18	-17	-17	-15	-13	-12	-13	-7	-7	-6
	BE	-41	10-95	-6	29	06-00	-16	-4	-15	-10	-12	-3	-16	-1	-7	-1	-8	-6
	CZ	0	11-98	28	53	12-05	49	39	39	39	40	40	41	44	49	53	36	40
	DK	-1	08-01	29	57	11-94	47	47	47	44	46	51	50	46	42	49	44	46
	DE	-54	12-02	-18	46	11-90	-45	-31	-42	-30	-34	-31	-28	-34	-34	-27	-23	-15
	EE	6	01-03	37	63	05-04	36	41	35	40	51	39	46	45	45	49	57	57
	EL	-50	04-95	-8	40	01-04	14	8	7	0	-8	-7	-6	0	-1	10	4	17
	ES	-72	07-93	-28	4	06-00	-34	-28	-26	-30	-21	-23	-21	-23	-25	-25	-31	-37
	FR	-50	03-93	-13	11	10-94	-1	0	-8	-7	-19	-17	-14	-16	-12	0	-13	-11
	IE	-30	05-03	6	37	06-98	-2	-10	-7	-3	-8	6	-5	-1	2	-5	3	-2
	IT	-42	02-95	15	73	02-93	16	0	15	-10	17	18	21	34	29	27	37	29
	CY	-46	02-03	-29	-12	12-05	-22	-26	-14	-23	-18	-25	-34	-19	-16	-12	-29	-22
	LV	-18	07-96	5	32	01-06	14	17	20	28	25	26	27	24	26	25	32	28
	LT	-37	03-00	-11	43	06-04	-5	-2	9	5	15	16	19	18	14	10	14	9
	HU	-41	03-05	-7	16	03-98	-41	-37	-38	-32	-21	-36	-12	-12	-16	-13	-8	-6
	NL	-27	12-03	28	57	06-99	-11	-4	-11	-4	-10	-9	-9	0	-1	12	18	13
	AT	-36	04-03	-11	13	07-00	-19	-11	-19	-15	-9	-13	-6	-4	-9	-7	3	8
	PL	-36	01-01	-13	20	02-98	-15	-12	-10	-6	-5	-4	-2	-4	2	-4	2	-2
	PT	-46	01-03	-21	3	07-99	-26	-23	-28	-24	-31	-31	-32	-31	-36	-25	-18	-28
SI	2	04-02	18	44	01-99	11	15	13	13	17	14	16	13	18	18	24	25	
SK	-35	06-95	11	58	11-98	-1	19	10	11	10	14	26	17	35	37	24	30	
FI	-15	11-00	8	40	05-04	9	9	16	24	19	14	29	25	26	23	16	24	
SE	-21	10-96	9	53	02-06	3	-1	-2	9	9	17	26	26	32	43	47	53	
UK	-57	09-92	-6	42	06-04	-14	-22	-27	-34	-41	-29	-31	-26	-45	-34	-17	-19	
VOLUME OF STOCKS	EU	10	01-91	16	21	10-96	15	16	14	16	17	15	15	14	18	18	17	17
	Euro area	6	01-91	15	21	10-96	13	14	12	14	16	14	14	13	18	17	17	16
	BE	-5	09-90	13	32	03-92	15	12	12	9	21	10	7	1	9	10	7	8
	CZ	0	03-00	10	27	05-95	13	17	13	14	12	13	14	14	10	8	12	8
	DK	-1	04-98	18	32	04-00	14	15	15	16	13	19	20	20	14	13	18	21
	DE	3	01-91	24	40	01-03	23	22	18	23	27	23	24	26	33	34	36	30
	EE	3	07-05	11	18	07-04	13	13	10	8	3	6	7	8	10	5	6	5
	EL	-7	11-02	13	41	12-93	21	20	25	16	16	15	14	15	16	11	6	9
	ES	-8	02-96	5	16	07-92	8	6	5	5	9	9	8	7	8	3	5	7
	FR	-3	10-93	11	21	09-98	8	8	8	6	10	10	10	9	10	10	10	10
	IE	-5	06-00	10	25	08-98	9	7	9	6	6	5	9	8	7	8	16	12
	IT	-8	10-99	8	43	10-96	1	5	5	11	2	0	-1	-3	6	4	-2	2
	CY	-15	04-05	-6	6	03-05	6	-15	-14	-4	-7	-5	-11	-13	-13	-13	-9	-6
	LV	-18	07-96	-4	8	12-02	0	3	3	1	0	-1	3	-1	3	2	3	3
	LT	-21	12-99	-1	13	10-96	13	-2	-1	-3	-6	-1	0	-1	1	1	2	0
	HU	4	02-96	22	33	01-99	21	17	24	21	16	16	23	19	14	18	25	24
	NL	5	07-97	12	19	06-05	17	16	16	19	16	16	15	16	15	12	14	14
	AT	-2	01-00	25	36	01-96	25	21	24	22	28	24	26	20	19	21	20	22
	PL	-9	09-03	-1	7	05-05	4	5	7	6	5	5	5	4	5	5	4	3
	PT	-3	12-03	9	25	06-90	2	3	5	5	4	12	11	10	14	9	7	13
SI	-1	07-05	16	33	01-99	13	11	8	7	-1	4	4	3	1	1	1	6	
SK	-5	06-00	10	26	02-95	7	7	3	4	5	2	4	2	2	2	2	-2	
FI	20	01-06	29	40	08-00	29	30	28	25	26	32	32	20	21	23	20	23	
SE	18	04-00	31	44	02-98	30	30	29	28	26	22	24	25	26	28	25	22	
UK	4	04-93	19	33	02-91	24	26	21	25	26	22	17	18	22	25	20	22	

TABLE 5 (continued): **Monthly survey of retail trade (s.a.)** ^{(a)(b)}

		Since 01/1990			2005										2006			
		Min.		Ave.	Max.		Mar.	Apr.	May	June	July	Aug.	Sep.	Oct.	Nov.	Dec.	Jan.	Feb.
		Value	Date		Value	Date												
EXPECTED BUSINESS SITUATION	EU	-20	01-93	2	15	03-00	0	-1	-3	-3	-3	-1	3	6	3	7	5	6
	Euro area	-25	01-93	-2	17	08-90	-1	-2	-2	-1	-2	-1	5	10	7	9	5	7
Component of the retail confidence indicator	BE	-23	04-03	2	22	04-98	1	3	-5	0	3	-13	-3	1	-6	-2	1	7
	CZ	2	09-00	23	46	02-02	21	22	18	21	18	18	30	31	31	20	21	32
	DK	8	10-01	41	71	07-94	58	54	51	47	45	49	46	54	48	52	48	53
	DE	-34	11-02	-7	26	12-90	-31	-33	-32	-24	-23	-29	-19	-9	-20	-17	-9	-2
	EE	4	04-03	28	62	01-03	43	46	42	34	35	31	29	35	34	34	27	24
	EL	-4	05-95	26	60	06-00	32	40	30	22	21	27	33	30	28	36	35	49
	ES	-34	02-93	14	34	04-91	20	27	26	18	17	20	15	18	26	14	5	6
	FR	-64	02-93	-22	19	10-04	7	10	6	-3	-4	1	7	9	14	9	-7	-5
	IE	-31	07-03	12	44	11-97	0	-14	-6	7	-2	5	-16	-12	6	11	8	6
	IT	-20	03-93	18	59	06-96	20	15	29	37	32	38	49	53	43	55	42	30
	CY	-13	06-02	9	28	03-05	28	26	5	12	15	11	8	15	6	3	9	13
	LV	2	01-04	19	36	09-99	18	20	23	18	26	25	23	26	29	24	24	26
	LT	-35	09-00	-2	45	03-04	4	-3	0	12	20	21	18	20	38	36	38	33
	HU	-25	08-05	6	39	02-98	-22	-17	-22	-21	-13	-25	-5	-6	-5	-4	-7	-13
	NL	-5	12-03	19	41	10-99	9	9	-1	-2	-3	-4	4	7	8	20	18	19
	AT	-24	03-03	-3	15	07-00	14	5	-4	-5	-1	-1	4	0	1	4	4	10
	PL	-33	12-01	-7	17	07-98	-4	-6	-6	-6	-7	-6	-7	-5	-1	-4	-10	-8
	PT	-26	01-03	7	39	01-90	8	5	3	-9	-16	-13	-13	-10	-8	2	6	-3
	SI	15	02-03	32	47	04-99	26	37	35	34	35	38	36	38	40	35	39	28
	SK	-14	11-94	23	60	12-96	45	32	30	54	42	23	23	32	33	37	19	20
FI	-4	04-03	10	39	05-97	9	17	16	19	18	22	22	25	21	18	23	24	
SE	19	10-01	42	67	04-00	26	33	24	29	39	40	39	42	47	48	60	61	
UK	-29	11-05	11	40	01-97	-3	-8	-19	-26	-23	-13	-18	-26	-29	-11	-4	-9	
INTENTIONS OF PLACING ORDERS	EU	-14	03-03	-3	13	01-90	-9	-9	-10	-7	-9	-7	-3	-3	-6	-3	-4	-4
	Euro area	-20	10-02	-5	14	01-90	-10	-11	-10	-6	-8	-6	-1	1	-3	-1	-6	-4
	BE	-27	05-93	-6	15	03-90	-8	-8	-7	-6	-7	-10	-9	-2	-5	-6	-3	-3
	CZ	-34	02-96	29	56	02-95	14	16	16	13	10	26	27	27	23	19	29	27
	DK	-12	10-01	19	58	07-94	27	23	28	22	17	26	27	25	29	27	20	26
	DE	-42	08-02	-14	24	01-91	-34	-34	-34	-25	-28	-26	-20	-17	-25	-22	-23	-18
	EE	-3	03-03	18	33	01-03	29	29	24	29	29	21	14	17	26	28	23	20
	EL	-23	04-93	10	38	06-96	15	14	9	-3	-10	2	14	5	11	17	16	24
	ES	-31	02-93	5	21	01-90	1	11	11	9	12	11	6	3	1	5	0	-8
	FR	-37	12-92	-14	11	10-99	-3	-2	-8	-6	-11	-8	-4	-4	-4	-2	-10	-8
	IE	-43	05-03	-5	27	08-00	-13	-11	-7	2	-13	1	-18	-19	-7	-10	-13	-11
	IT	-25	10-97	22	69	04-92	18	7	22	34	34	37	47	53	47	44	30	30
	CY	-44	06-02	-9	10	02-04	1	4	-2	-9	7	-2	-6	-6	3	-7	-10	-9
	LV	-4	10-96	9	27	03-02	16	13	19	14	25	18	18	21	23	14	17	19
	LT	-23	01-03	7	51	07-04	5	14	1	4	14	25	23	27	48	43	32	11
	HU	-29	03-05	-2	23	05-98	-29	-18	-26	-21	-22	-26	-13	-17	-9	-11	-17	-19
	NL	-22	09-03	3	25	08-99	-10	-7	-16	-14	-19	-17	-11	-9	-9	0	-1	0
	AT	-42	03-99	-31	-16	06-00	-27	-22	-26	-23	-21	-24	-23	-25	-26	-23	-25	-19
	PL	-30	12-01	-6	13	12-98	-2	-7	-5	-6	-6	-8	-8	-3	-3	-6	-9	-8
	PT	-41	01-03	-13	12	11-98	-6	-13	-23	-19	-20	-27	-30	-25	-25	-2	-12	-15
	SI	-2	10-01	15	30	10-00	6	13	19	13	21	14	17	19	23	21	19	9
	SK	-19	03-96	34	78	01-02	51	47	53	54	60	32	33	33	41	36	18	37
	FI	-20	07-03	-6	14	02-06	4	4	11	3	2	7	4	8	7	11	12	14
	SE	-17	10-01	14	52	03-00	3	5	0	0	9	5	11	18	18	21	28	27
	UK	-37	03-91	3	34	08-96	-12	-12	-20	-22	-21	-18	-19	-25	-30	-22	-3	-10
EMPLOYMENT EXPECTATIONS	EU	-13	12-92	-2	8	08-00	-3	-4	-4	-2	-5	-6	-2	-3	-7	-5	-4	0
	Euro area	-11	12-92	-2	9	08-00	-4	-3	-1	1	-3	-5	-1	-1	-6	-3	-1	5
	BE	-13	12-92	3	16	04-90	4	2	4	8	6	7	10	8	3	-1	6	9
	CZ	-37	01-95	1	22	05-02	8	1	6	-2	-4	8	11	11	15	10	15	15
	DK	-8	05-01	8	28	05-00	16	12	15	10	14	15	20	13	16	14	13	16
	DE ^(c)	-37	01-03	-12	9	03-91	-26	-23	-24	-19	-20	-21	-15	-22	-24	-19	-17	-12
	EE	-8	05-02	3	14	12-05	8	10	13	4	5	-1	4	8	9	14	13	10
	EL	-12	07-05	27	62	03-98	0	8	0	-9	-12	-5	2	-10	-10	21	5	13
	ES	-19	09-93	0	8	12-98	5	3	4	3	2	3	2	4	1	2	4	3
	FR	-14	06-91	-2	12	10-00	0	3	1	0	-3	-2	2	4	0	-2	-1	-1
	IE	-17	05-03	2	22	03-98	1	-3	-2	0	-7	-4	-1	-12	-6	-4	2	3
	IT	-34	02-97	12	54	02-00	31	26	42	47	32	16	24	38	19	22	27	53
	CY	-4	07-02	0	5	10-05	-2	1	-1	1	1	-1	0	5	0	0	0	0
	LV	-23	04-96	1	17	01-06	9	5	9	9	14	14	13	8	15	12	17	16
	LT	-48	07-95	-9	68	10-05	48	47	42	42	52	63	64	68	68	54	59	34
	HU	-36	05-96	-9	5	11-03	-19	-15	-18	-16	-16	-19	-13	-15	-9	-7	-9	-4
	NL	-6	08-05	2	13	06-99	-2	-2	-4	-3	-6	-6	-5	-3	-4	-1	-2	0
	AT	-20	03-99	-5	71	01-96	-6	-7	-7	-6	-7	-4	-6	-7	-9	-4	-10	-2
	PL	-28	12-01	-12	2	07-97	-7	-9	-8	-8	-8	-10	-6	-6	-6	-5	-6	-6
	PT	-23	05-03	-5	13	09-97	-11	-9	-11	-12	-11	-14	-19	-20	-19	-20	-19	-18
	SI	-46	02-99	-9	11	06-04	-13	-4	-13	-5	-8	-10	5	-9	-7	-8	-9	-6
	SK	-71	12-93	-8	31	09-02	-17	-9	-3	0	-1	1	2	-2	6	14	10	11
	FI	-16	07-03	-3	10	05-04	-2	-4	-3	2	1	-1	-6	2	2	0	5	2
	SE	-34	10-96	-4	23	06-00	-15	-14	-19	-16	-17	-11	-9	-8	-7	-2	-1	4
	UK	-32	12-91	-2	25	10-97	-2	-6	-15	-18	-14	-10	-10	-16	-19	-19	-17	-25

(a) United Kingdom: refers to the volume of sales for the time of the year.

(b) The indicator is the arithmetic average of the balances (%) for the present and the future business situation, and for stocks – with inverted sign.

(c) Quarterly data, seasonally adjusted monthly.

TABLE 6: Monthly survey of construction industry (s.a.)^(a)

		Since 01/1985						2005						2006					
		Min.		Ave.		Max.		Mar.	Apr.	May	June	July	Aug.	Sep.	Oct.	Nov.	Dec.	Jan.	Feb.
		Value	Date	Value	Date	Value	Date												
CONSTRUCTION CONFIDENCE INDICATOR	EU	-42	10-93	-20	3	02-90	-10	-10	-10	-12	-10	-9	-7	-6	-3	-6	-4	-4	-4
	Euro area	-43	10-93	-19	4	03-90	-11	-11	-11	-12	-11	-9	-7	-7	-3	-6	-4	-4	-5
	BE	-35	11-95	-12	10	02-00	-4	-6	-5	-6	-5	-6	-4	-3	-1	-3	1	0	0
	CZ	-64	06-99	-17	3	06-95	-7	-9	-8	-10	-7	-7	-1	0	-2	-8	-9	-9	-7
	DK	-37	12-91	-8	21	01-06	3	5	8	6	5	3	5	14	16	18	21	20	20
	DE	-55	12-02	-35	2	02-90	-48	-45	-42	-44	-42	-41	-37	-35	-35	-36	-33	-29	-29
	EE	-46	12-99	4	46	12-05	31	32	33	30	29	33	27	29	38	46	45	45	45
	EL	-53	03-05	-12	33	04-00	-53	-48	-31	-38	-49	-47	-45	-40	-36	-34	-30	-22	-22
	ES	-57	10-92	-2	42	01-99	28	20	15	10	17	25	26	23	39	23	21	6	6
	FR	-60	03-93	-16	34	10-00	11	8	7	5	9	7	8	12	13	10	15	16	16
	IE	-54	09-02	10	58	06-97	27	29	15	45	34	20	28	24	31	13	13	0	0
	IT	-68	10-93	-13	21	05-90	-5	-3	-1	-5	-8	-3	-5	-10	-6	-2	3	0	0
	CY	-32	12-05	10	35	12-03	7	9	8	-4	-7	-7	-2	-4	-14	-32	3	-4	-4
	LV	-64	07-93	-27	13	11-05	3	3	3	5	5	6	7	7	13	10	10	9	9
	LT	-76	09-00	-39	7	12-05	-2	-22	-11	-4	1	1	2	1	7	7	6	-1	-1
	LU	-73	03-94	-26	24	03-90	-29	-20	-21	-26	-33	-26	-32	-22	-20	-22	-19	-27	-27
	HU	-24	12-04	-8	11	09-98	-17	-17	-17	-21	-15	-16	-9	-13	-10	-15	-16	-17	-17
	NL	-25	05-03	-3	27	12-00	-2	-1	-1	1	1	4	6	4	6	3	3	7	7
	AT	-60	04-96	-29	-8	02-06	-24	-24	-20	-16	-23	-18	-14	-13	-14	-12	-12	-8	-8
	PL	-63	12-02	-42	-21	02-06	-30	-29	-29	-31	-29	-28	-27	-24	-21	-25	-21	-21	-21
	PT	-56	02-03	-26	-1	12-97	-34	-39	-34	-42	-44	-39	-41	-31	-38	-39	-35	-35	-35
SI	-33	06-02	-8	6	01-05	2	-2	-4	-7	-8	-9	-8	-11	-10	-10	-16	-14	-14	
SK	-86	07-99	-27	18	03-97	-13	-11	-11	-9	-7	-10	-9	-11	-5	-6	-10	-11	-11	
FI	-97	09-91	-17	48	06-98	16	21	13	14	21	22	10	10	12	19	22	24	24	
SE	-83	12-93	-36	27	01-06	-3	6	6	15	27	8	21	14	15	19	27	25	25	
UK	-79	06-91	-19	5	08-04	-2	-7	-10	-12	-12	-11	-10	-5	-9	-8	-9	-5	-5	
ORDER BOOKS	EU	-54	08-93	-29	-2	03-90	-15	-18	-17	-20	-18	-17	-15	-14	-9	-12	-10	-12	
	Euro area	-54	08-93	-27	-3	03-90	-15	-18	-16	-19	-17	-17	-14	-14	-8	-11	-9	-11	
Component of the construction confidence indicator	BE	-48	02-96	-23	2	02-00	-12	-15	-15	-16	-14	-14	-14	-15	-12	-13	-6	-10	
	CZ	-72	06-99	-22	9	12-02	-7	-13	-12	-13	-13	-8	-3	-3	-9	-22	-10	-9	
	DK	-49	12-91	-11	33	03-95	4	6	10	10	8	6	5	15	17	20	29	27	
	DE	-67	07-02	-45	-10	02-91	-60	-59	-56	-59	-56	-54	-51	-46	-46	-47	-45	-42	
	EE	-67	12-99	-2	56	02-06	30	35	40	35	30	33	26	25	38	49	52	56	
	EL	-77	06-95	-37	16	04-00	-63	-60	-48	-59	-61	-63	-66	-63	-63	-65	-71	-54	-54
	ES	-64	08-93	2	54	11-05	45	31	37	28	29	27	35	29	54	37	42	18	
	FR	-74	09-93	-23	37	10-00	8	1	-1	-1	3	0	0	8	6	2	9	11	
	IE	-61	06-94	4	68	06-97	28	25	21	37	23	19	33	14	21	12	-3	9	
	IT	-84	02-94	-24	17	05-90	-10	-10	-11	-15	-15	-11	-9	-19	-8	-3	-3	-5	
	CY	-33	12-05	4	41	12-03	-5	4	-5	-6	-9	-9	-3	-10	-6	-33	0	-18	
	LV	-84	01-96	-50	-4	11-05	-14	-12	-11	-8	-9	-7	-11	-10	-4	-5	-4	-5	
	LT	-96	09-00	-62	1	02-06	-26	-28	-37	-21	-16	-13	-15	-14	-13	-12	-3	1	
	LU	-73	08-93	-28	12	03-90	-32	-24	-21	-24	-37	-21	-40	-25	-22	-21	-11	-21	
	HU	-35	12-04	-17	3	09-98	-30	-28	-28	-33	-26	-25	-15	-22	-19	-24	-21	-28	
	NL	-30	09-93	-8	20	09-00	-9	-7	-4	-5	-3	-1	2	-2	0	-2	-2	1	
	AT	-65	04-96	-40	-18	12-05	-38	-36	-33	-30	-35	-29	-23	-21	-22	-18	-28	-24	
	PL	-99	12-02	-67	-32	12-01	-60	-59	-60	-59	-56	-56	-54	-53	-48	-54	-49	-49	
	PT	-79	05-94	-44	-9	12-97	-57	-56	-55	-62	-60	-57	-63	-58	-54	-53	-49	-57	
	SI	-42	06-02	-14	3	08-04	-5	-9	-11	-13	-21	-27	-19	-28	-21	-21	-27	-27	
	SK	-93	03-94	-43	-5	03-97	-25	-23	-26	-23	-26	-34	-21	-30	-17	-16	-20	-20	
FI	-99	12-93	-24	38	06-98	7	10	5	9	12	21	11	10	11	16	28	22		
SE	-97	05-97	-48	33	01-90	-10	-2	-2	-5	13	5	14	11	6	14	15	8		
UK	-87	06-91	-34	-3	01-90	-11	-18	-19	-24	-23	-23	-21	-17	-19	-18	-21	-17		
EMPLOYMENT EXPECTATIONS	EU	-31	10-93	-11	9	02-90	-4	-3	-4	-4	-3	-1	1	2	3	0	3	3	
	Euro area	-34	12-96	-11	11	02-90	-7	-4	-5	-6	-5	-1	0	0	2	-1	1	2	
Component of the construction confidence indicator	BE	-24	11-95	0	19	02-90	5	4	5	3	5	2	6	8	10	7	8	9	
	CZ	-57	06-99	-13	12	06-95	-7	-4	-4	-6	-1	-5	1	2	6	5	-8	-4	
	DK	-31	09-91	-5	42	03-98	3	3	6	2	2	-1	5	12	14	16	12	12	
	DE	-50	12-96	-24	19	02-90	-36	-31	-29	-30	-29	-28	-23	-23	-24	-25	-21	-15	
	EE	-45	03-99	10	68	01-97	33	30	27	25	27	33	29	34	38	42	38	34	
	EL	-64	09-04	13	60	03-99	-42	-36	-14	-18	-37	-31	-25	-18	-8	-3	10	10	
	ES	-66	03-93	-5	54	01-99	11	8	-6	-9	4	22	17	17	24	9	0	-6	
	FR	-51	03-93	-9	31	10-00	14	16	15	12	16	14	16	16	21	18	20	22	
	IE	-50	09-02	16	61	07-04	26	34	9	54	44	21	23	35	41	14	29	-8	
	IT	-60	10-93	-2	31	06-04	-1	5	9	5	-1	6	0	-2	-4	-1	9	4	
	CY	-30	12-05	15	48	11-03	19	14	20	-2	-5	-5	-2	3	-23	-30	7	11	
	LV	-45	07-93	-5	30	11-05	20	18	18	18	18	19	25	23	30	24	23	22	
	LT	-56	09-00	-16	37	03-03	21	-15	16	13	17	15	19	16	27	26	15	-2	
	LU	-77	02-94	-24	36	03-90	-26	-16	-21	-28	-29	-30	-25	-18	-17	-24	-26	-33	
	HU	-13	12-04	2	21	01-98	-5	-5	-7	-8	-4	-7	-4	0	-6	-12	-6	-6	
	NL	-26	05-03	2	36	12-00	4	6	2	6	4	8	11	9	12	9	8	13	
	AT	-76	02-01	-17	14	02-03	-9	-12	-7	-3	-10	-7	-4	-5	-6	-7	5	9	
	PL	-49	04-02	-13	18	05-96	-1	2	1	-3	-2	-1	1	4	5	3	6	6	
	PT	-47	02-03	-8	19	09-97	-12	-22	-13	-23	-29	-22	-18	-4	-23	-24	-21	-14	
	SI	-23	06-02	-2	10	08-05	9	5	2	0	5	10	4	6	0	1	-5	0	
	SK	-86	07-99	-11	41	01-97	-2	1	4	6	11	13	3	9	7	4	-1	-2	
FI	-100	04-91	-10	59	03-97	26	32	2											

TABLE 6 (continued): Monthly survey of construction industry (s.a.)^(a)

		Since 01/1985						2005								2006			
		Min.		Ave.		Max.		Mar.	Apr.	May	June	July	Aug.	Sep.	Oct.	Nov.	Dec.	Jan.	Feb.
		Value	Date	Value	Date	Value	Date												
TREND OF ACTIVITY	EU	-32	11-93	-7	15	03-90	-9	-3	3	2	4	5	5	7	8	9	9	3	
	Euro area	-35	11-93	-8	17	03-90	-12	-4	3	1	4	5	5	5	8	10	8	0	
COMPARED WITH PRECEDING MONTHS	BE	-37	03-91	-4	36	02-90	-14	0	10	-7	1	0	-2	1	-2	2	1	3	
	CZ	-34	06-99	25	77	01-05	50	41	36	34	33	40	40	41	48	42	60	59	
	DK	-21	04-03	-2	20	02-06	8	8	8	9	4	5	7	12	15	12	19	20	
	DE	-45	03-05	-19	40	03-91	-45	-22	-16	-19	-14	-17	-16	-14	-8	-9	-12	-22	
	EE	-25	03-99	19	52	02-06	38	32	38	33	19	22	24	23	24	45	48	52	
	EL	-50	04-05	5	61	06-98	-44	-50	-23	-15	-27	-33	-41	-39	-19	-22	-20	-5	
	ES	-49	07-97	7	59	01-99	5	23	38	32	30	40	38	43	38	46	41	20	
	FR	-64	09-93	-8	42	07-00	13	10	8	11	19	15	14	18	20	21	23	18	
	IE	-45	09-91	4	47	05-96	15	6	0	-5	27	17	-12	15	23	30	17	13	
	IT	-50	03-93	-2	26	07-04	3	2	7	-3	1	5	7	-7	-5	1	-3	-6	
	CY	-29	09-04	5	78	09-02	1	34	-7	-13	-6	-10	50	-24	-20	-14	0	0	
	LV	-47	04-96	-1	44	06-02	21	25	24	25	24	19	22	19	24	27	23	22	
	LT	-61	03-00	-3	81	06-02	-7	10	18	19	19	14	27	27	30	36	50	68	
	LU	-68	10-02	-23	30	04-91	-32	-41	-32	-25	-28	-28	-35	-38	-20	-21	-12	-25	
	HU	-37	03-03	-8	14	03-99	-20	-12	-12	-17	-8	-6	1	3	3	-6	-9	-5	
	NL	-41	02-96	-2	37	03-97	-5	1	5	5	7	8	10	5	4	4	4	4	
	AT	-87	04-96	-7	27	01-04	-38	-28	-7	1	-7	12	10	7	12	15	10	-4	
	PL	-30	01-02	9	42	01-05	0	-3	4	8	13	13	20	22	26	27	37	22	
	PT	-37	09-03	-9	24	05-97	-24	-29	-19	-27	-34	-28	-26	-20	-19	-29	-13	-19	
	SI	-17	08-05	8	33	02-04	1	-4	-7	-3	-17	-17	-7	-1	-10	-4	-13	-5	
SK	-43	06-99	7	53	12-04	-6	0	18	24	27	25	26	27	29	41	23	4		
FI	-88	09-91	6	75	01-98	25	11	10	23	21	37	33	31	39	29	33	31		
SE	-67	12-91	-10	59	01-06	12	11	20	34	50	41	45	50	42	41	59	58		
UK	-69	06-91	-6	16	02-04	-1	-6	-1	-2	-6	-5	-2	3	-4	-5	3	6		
PRICE EXPECTATIONS	EU	-21	02-96	0	24	02-90	2	3	1	1	1	5	6	7	7	8	8	6	
	Euro area	-26	02-96	-2	31	04-90	-2	-1	-3	-3	-2	1	3	3	2	4	3	1	
	BE	-22	01-96	-1	29	01-90	-1	1	-1	-1	3	4	7	5	9	9	12	9	
	CZ	-39	08-00	41	80	02-95	23	18	14	21	16	26	23	23	18	20	20	21	
	DK	-36	03-03	-15	8	02-06	-6	-5	-5	-7	-7	-6	-4	4	4	4	6	8	
	DE	-44	02-96	-13	45	02-90	-26	-22	-22	-24	-23	-21	-17	-14	-14	-14	-12	-12	
	EE	-29	09-99	32	88	04-94	43	38	42	58	56	59	67	65	67	66	66	64	
	EL	-39	06-05	5	35	06-95	-28	-38	-39	-39	-19	-17	-15	2	-8	-12	-15	-18	
	ES	-20	10-93	18	71	10-00	20	23	20	23	29	31	28	28	13	24	14	11	
	FR	-60	03-93	-16	32	10-00	1	-4	-6	-8	-6	-1	0	-2	0	4	2	-2	
	IE	-66	07-03	6	58	03-00	-1	8	5	11	11	-1	10	-9	10	18	5	7	
	IT	-16	07-93	17	63	06-90	12	17	13	16	9	8	14	5	12	9	7	7	
	CY	-1	07-05	30	76	06-04	21	12	7	1	-1	27	3	10	10	0	31	11	
	LV	-11	03-01	27	74	12-05	48	59	54	53	57	61	71	72	69	74	66	66	
	LT	-5	03-01	36	89	01-95	42	42	49	39	53	43	72	53	52	49	43	43	
	LU	-67	05-93	-28	29	11-00	-37	-29	-42	-48	-42	-42	-35	-29	-26	-16	-17	-20	
	HU	-8	01-06	9	32	03-01	4	6	5	-1	1	3	6	7	7	2	-8	-3	
	NL	-7	01-04	25	69	04-01	14	16	17	21	20	24	28	27	22	28	34	29	
	AT	-53	04-96	-11	18	06-91	-1	1	-3	-4	-5	-3	0	7	6	1	8	9	
	PL	-27	03-02	16	45	05-96	7	5	1	1	2	4	6	7	9	9	10	8	
PT	-40	05-03	0	48	06-90	-7	-23	-10	-23	-21	-10	-17	-17	-25	-23	-21	-29		
SI	-6	05-02	5	16	05-04	3	3	5	-2	1	0	5	9	4	1	2	-1		
SK	-20	08-00	53	93	06-97	22	28	27	31	30	32	34	37	28	34	31	30		
FI	-45	06-91	9	65	05-97	9	29	16	27	12	18	12	27	18	21	21	19		
SE	-75	06-91	-14	40	02-06	5	12	23	19	-17	24	17	14	28	23	24	40		
UK	-56	12-90	15	43	08-04	25	26	23	15	25	25	24	28	36	31	36	31		

(a) The indicator is the average of the balances (%) for the questions on order-books and employment expectations.

TABLE 7a: Manufacturing industry; future Member States (s.a.)^(a)
Balances: i.e.differences between the percentages of respondents giving positive and negative replies (s.a.)

		Since 01/1990						2005										2006	
		Min.		Ave.		Max.		Mar.	Apr.	May	June	July	Aug.	Sep.	Oct.	Nov.	Dec.	Jan.	Feb.
		Value	Date	Value	Date	Value	Date												
CONFIDENCE INDICATOR	BG	-30	06-93	-8	8	11-95	0	2	3	2	2	2	0	1	1	1	-1	-1	
	RO	-22	09-92	-1	28	06-96	4	-3	-1	-3	-1	0	-2	0	3	2	2	1	
PRODUCTION EXPECTATIONS	BG	-17	02-97	21	42	11-95	29	32	32	32	31	29	23	26	30	26	21	28	
	RO	-8	07-92	23	52	03-03	30	20	19	14	17	17	21	22	26	24	21	14	
ORDER BOOKS	BG	-65	06-93	-43	-19	10-00	-33	-34	-31	-34	-33	-31	-32	-32	-36	-37	-39	-38	
	RO	-53	06-99	-16	50	06-96	-11	-16	-16	-16	-18	-13	-18	-15	-15	-15	-13	-11	
STOCKS OF FINISHED PRODUCTS ^(b)	BG	-22	06-97	2	35	08-93	-5	-7	-7	-6	-9	-9	-10	-10	-10	-14	-15	-7	
	RO	-4	06-96	10	51	07-92	7	13	6	6	3	3	8	8	2	4	4	-1	

(a) The confidence indicator is the arithmetic average of the three components (the last with inverted sign).
(b) Highest figure is considered as minimum, lowest figure is considered as maximum.

TABLE 7b: Services^(a)

		Since 01/1990						2005										2006	
		Min.		Ave.		Max.		Mar.	Apr.	May	June	July	Aug.	Sep.	Oct.	Nov.	Dec.	Jan.	Feb.
		Value	Date	Value	Date	Value	Date												
CONFIDENCE INDICATOR	BG	15	03-03	28	42	06-02	29	28	31	35	30	23	24	22	26	24	22	18	
	RO⁽ⁿ⁾	-1	06-05	28	54	06-04	26	20	21	-1	19	18	19	19	21	29	30	29	
ASSESSMENT OF BUSINESS CLIMATE	BG	12	02-06	29	66	05-02	25	26	26	43	32	21	22	16	19	19	18	12	
	RO⁽ⁿ⁾	3	06-05	37	63	04-03	29	13	31	3	17	23	18	23	26	44	29	33	
EVOLUTION OF DEMAND IN RECENT MONTHS	BG	-1	05-02	17	36	03-04	16	14	19	17	23	16	23	12	20	16	18	14	
	RO⁽ⁿ⁾	-15	06-02	21	53	06-04	30	26	22	-6	10	13	27	18	17	20	36	30	
EVOLUTION OF DEMAND IN THE MONTHS AHEAD	BG	16	03-03	38	59	05-02	45	46	47	44	37	31	28	38	40	37	31	28	
	RO⁽ⁿ⁾	-7	06-02	25	50	06-04	19	21	11	0	31	17	12	17	19	24	25	25	

(a) The confidence indicator is the arithmetic average of the three components.
(n) Not seasonally adjusted.

TABLE 7c: Consumer opinion and financial condition; future Member States (a)

		Since 01/1990						2005										2006	
		Min.		Ave.		Max.		Mar.	Apr.	May	June	July	Aug.	Sep.	Oct.	Nov.	Dec.	Jan.	Feb.
		Value	Date	Value	Date	Value	Date												
CONFIDENCE INDICATOR	BG⁽ⁿ⁾	-39	08-03	-28	-14	08-01	-23	-26	-22	-19	-23	-26	-26	-32	-27	-30	-30	-33	
	RO⁽ⁿ⁾	-33	07-02	-24	-13	01-05	-20	-22	-22	-21	-24	-25	-25	-26	-26	-28	-30	-28	
FINANCIAL SITUATION OVER NEXT 12 MONTHS	BG⁽ⁿ⁾	-23	07-03	-12	3	07-01	-8	-9	-6	-4	-6	-11	-12	-19	-12	-16	-17	-21	
	RO⁽ⁿ⁾	-14	07-02	-3	9	11-04	3	-1	1	1	-1	-2	-2	-3	-4	-4	-7	-7	
GEN. ECON. SITUATION OVER NEXT 12 MONTHS	BG⁽ⁿ⁾	-25	08-03	-9	16	07-01	0	-3	0	2	-3	-12	-10	-24	-14	-16	-21	-24	
	RO⁽ⁿ⁾	-14	01-06	-2	12	01-05	6	1	-1	1	-7	-3	-7	-6	-5	-11	-14	-11	
SAVINGS OVER NEXT 12 MONTHS	BG⁽ⁿ⁾	-81	03-02	-74	-63	11-05	-73	-74	-69	-68	-71	-67	-69	-67	-63	-68	-66	-68	
	RO⁽ⁿ⁾	-63	12-03	-54	-46	12-04	-49	-53	-52	-50	-48	-56	-54	-52	-55	-55	-57	-56	
UNEMPLOYMENT OVER NEXT 12 MONTHS	BG⁽ⁿ⁾	2	07-01	19	31	03-02	12	17	11	7	14	14	14	20	16	20	19	21	
	RO⁽ⁿ⁾	24	11-04	38	51	01-02	39	35	36	37	40	39	37	42	41	42	42	36	

(a) The confidence indicator is the average of the four components.
(n) Not seasonally adjusted.

TABLE 7d: Retail trade (s.a.)^(a)

		Since 01/1990						2005										2006	
		Min.		Ave.		Max.		Mar.	Apr.	May	June	July	Aug.	Sep.	Oct.	Nov.	Dec.	Jan.	Feb.
		Value	Date	Value	Date	Value	Date												
CONFIDENCE INDICATOR	BG	5	11-00	18	32	06-00	10	11	15	11	13	15	14	11	10	12	10	11	
	RO	1	06-99	16	36	12-97	19	18	17	17	18	21	17	17	20	19	21	16	
PRESENT BUSINESS SITUATION	BG	-3	09-96	22	54	11-97	2	8	15	11	14	19	15	15	13	9	7	12	
	RO	-1	02-03	27	58	09-97	18	18	26	26	24	31	20	21	24	28	33	24	
VOLUME OF STOCKS EXPECTED	BG	-55	03-97	-18	12	11-00	-6	-5	-6	-1	-2	-2	-4	-2	-3	-6	-4	-3	
	RO	-20	12-94	4	55	10-95	-1	0	3	4	2	2	2	4	3	6	2	1	
BUSINESS SITUATION	BG	-33	02-97	16	43	03-00	21	20	25	20	22	22	22	17	16	21	18	18	
	RO	-37	10-94	24	74	11-95	38	35	27	28	32	33	32	36	38	35	31	25	

(a) The confidence indicator is the arithmetic average of the three components (for stocks, with inverted sign).

TABLE 7e: Construction industry; future Member States (s.a.)^(a)

		Since 01/1990						2005										2006	
		Min.		Ave.		Max.		Mar.	Apr.	May	June	July	Aug.	Sep.	Oct.	Nov.	Dec.	Jan.	Feb.
		Value	Date	Value	Date	Value	Date												
CONFIDENCE INDICATOR	BG	-56	03-93	-27	6	07-05	1	1	-1	1	6	-3	-3	-2	-2	-1	-2	-9	
	RO	-60	09-99	-9	35	06-96	-15	-18	-18	-18	-16	-9	-12	-11	-9	-9	-7	-7	
ORDER BOOKS	BG	-74	10-00	-42	-15	11-05	-24	-22	-24	-22	-21	-21	-19	-18	-15	-15	-18	-20	
	RO	-89	09-99	-12	64	03-98	-31	-32	-30	-27	-29	-22	-29	-26	-25	-27	-22	-20	
EMPLOYMENT EXPECTATIONS	BG	-50	01-93	-12	32	07-05	27	24	23	23	32	14	13	13	11	13	14	2	
	RO	-39	06-97	-6	38	03-01	1	-4	-5	-9	-2	5	5	4	7	9	9	6	

(a) The confidence indicator is the average of both components.