



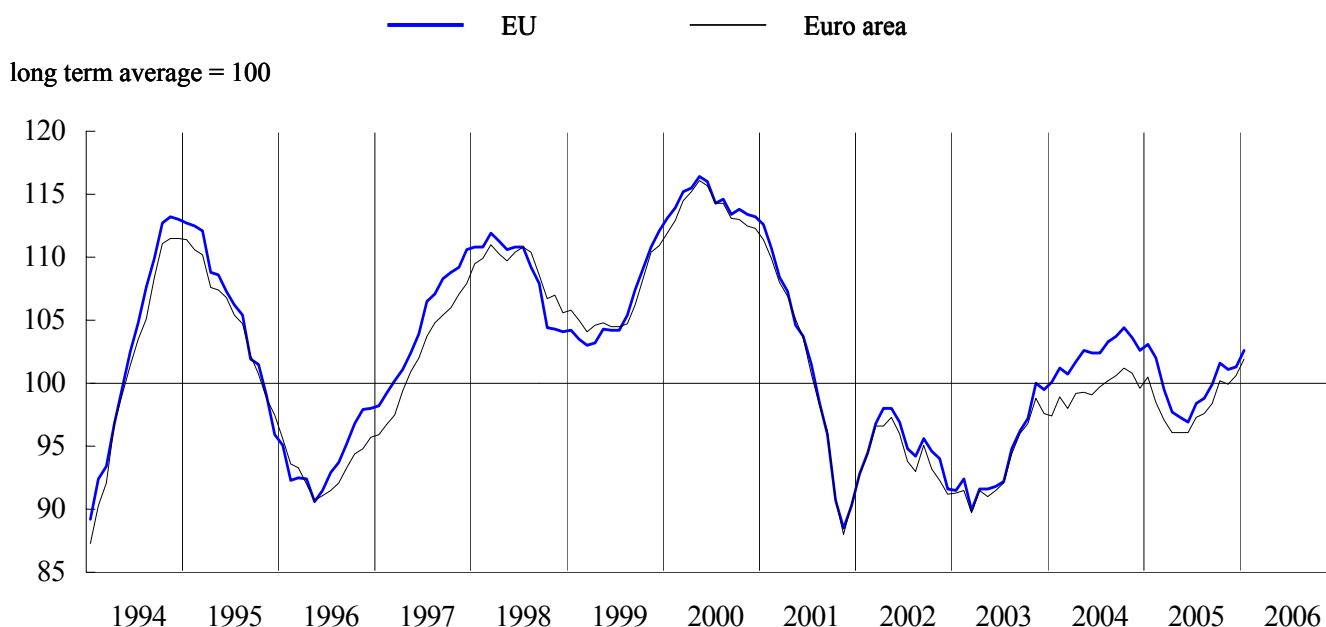
## BUSINESS AND CONSUMER SURVEY RESULTS

January 2006

Next publication of Business and Consumer Survey Results scheduled for 28 February 2006

[http://europa.eu.int/comm/economy\\_finance/indicators/businessandconsumersurveys\\_en.htm](http://europa.eu.int/comm/economy_finance/indicators/businessandconsumersurveys_en.htm)

GRAPH 1: Economic sentiment indicator (s.a.)



### Further increase of economic sentiment in both the EU and the euro area

The *Economic Sentiment Indicator (ESI)* continued the upward trend that began in the summer of 2005. In January 2006, the indicator improved by a robust 1.3 points in the EU and by 1.2 points in the euro area. For the euro area, the indicator is now at the highest level since the summer of 2001.

Developments in the confidence indicators of the various sectors were also positive. The EU registered a growth of confidence in the *services sector*, the *retail sector* and in the *construction sector*, while, in *industry* and among *consumers*, the level of confidence remained unchanged. In the euro area, unchanged confidence among *consumers* and in the *retail sector* was accompanied by improvements in the *industry*, *services* and *construction* sectors. In short, neither the euro area nor the EU witnessed a fall in confidence in any of the sectors. This strengthens the expectation that the upward trend will continue in the coming months.

At the country level, the picture is mixed. *Germany*, *Italy* and *Poland* showed an improvement in confidence, with *Poland* reaching an all-time high. In *Germany*, the headline indicator improved by almost 3 points and is now above its long-term average of 100 for the first time since May 2001. While the *French* indicator remained unchanged, *Spain* and the *UK* saw a drop in confidence. The decrease in the *UK* was the fourth consecutive fall.

## Industrial confidence improves slightly in the euro area and remains unchanged in the EU

In January, *industrial confidence* increased by 1 point in the euro area and remained unchanged in the EU. These developments extend the gradual upward trend the indicator has been following since the second quarter of 2005.

Developments in the individual underlying components were quite homogeneous. For the EU, *production expectations* showed a small improvement, while the other two components (*order books* and the *stocks of finished products*) remained unchanged. For the euro area, all three components improved by 1 percentage point.

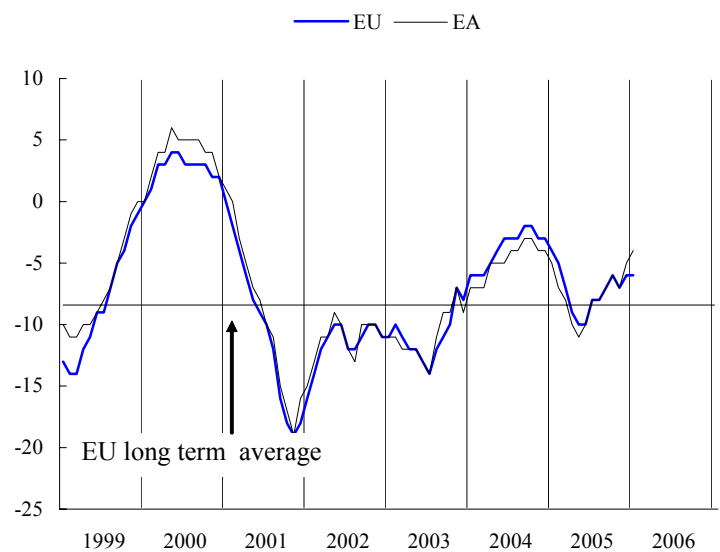
At the individual country level, the picture was rather mixed. Of the large Member States, *Germany* and *Italy* saw confidence grow by 2 points, *France* and *Poland* registered a small drop in confidence, while industry managers in the *UK* and *Spain* became considerably more pessimistic.

The results of the *quarterly survey in the manufacturing sector* for January 2006 are broadly consistent with the results of the monthly surveys. In particular, industrial managers reported a significant improvement of *new orders* and were much more optimistic with regard to their *export expectations*.

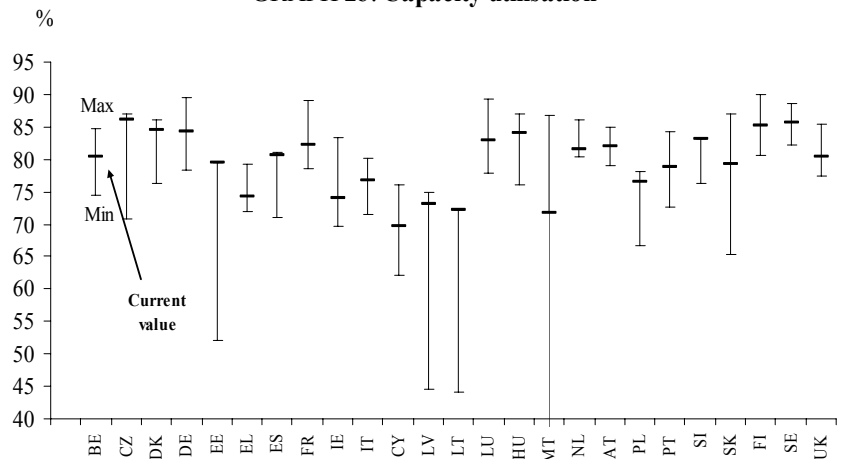
Among the larger Member States, *Germany*, *Spain*, *France*, *Italy* and the *UK* registered an increase in the rate of *capacity utilisation* between October and January, while only *Poland* saw the rate decline marginally. Accordingly, for the euro area and the EU as a whole, capacity utilisation improved. The EU figure is now almost at its long term average.

The improvement of the *capacity utilisation* rate in the EU total manufacturing industry was also reflected at the branch level. All three sectors (*consumer goods*, *intermediate goods* and *investment goods*) registered an increase of around half a percentage point. Slightly more diverging developments can be seen for *export expectations* at branch level: rising expectations in the *consumer* and the *investment goods* sectors were accompanied by unchanged expectations in the *intermediate goods* sector.

GRAPH 2a: Industrial confidence indicator

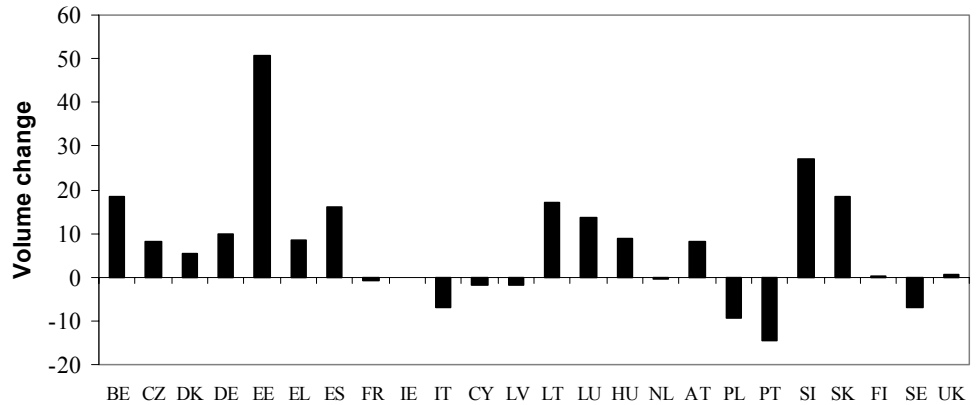


GRAPH 2b: Capacity utilisation



According to the semi-annual *industrial investment survey*, which was carried out in the fourth quarter of 2005, most EU managers in the industrial sector expect to increase their investment volumes in 2006 as compared to 2005. More precisely, *real investment* is expected to grow by 2% in the EU and by 5% in the euro area.

GRAPH 2c: Investment expectations



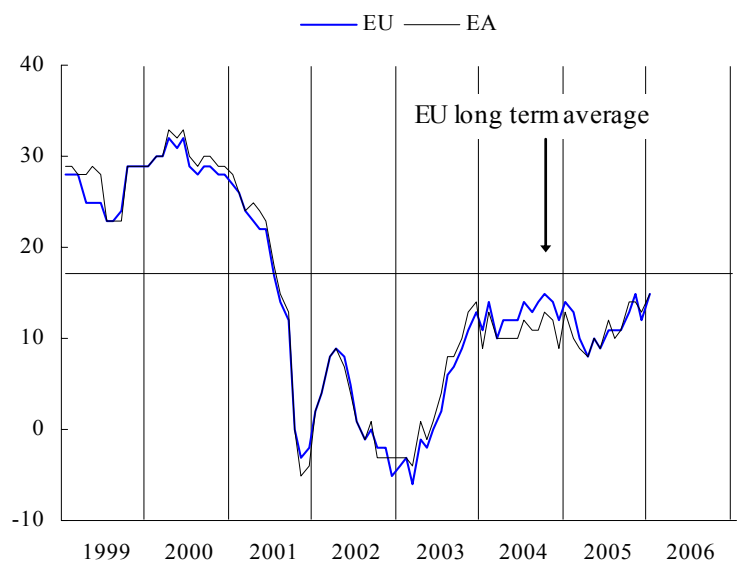
Among the larger Member States, the picture is quite diverse. Managers in *Germany* and *Spain* expect a considerable increase of real investment, while *Italian* and *Polish* managers foresee a substantial fall. In *France* and the *UK*, no major changes in investment are expected.

Looking at the different branches, the largest investment boost is predicted for the *durable consumer goods* sector, where managers foresee a real growth of 21% for the EU as a whole. *Germany* stands out with an expected investment growth of 54% in this sector.

**Services confidence up again in both the EU and the euro area**

After the drop in December 2005, confidence in the services sector increased by 3 points in the EU and by 2 points in the euro area. From a longer-term perspective, despite the uneven recovery since March of last year, the indicator appears more or less flat since the end of 2003.

GRAPH 3: Services confidence indicator



Among the three underlying components of the confidence indicator, the *assessment of the current business situation* and the *evolution of demand in recent months* contributed strongly to the overall growth of confidence in the EU. The lack of improvement in the *expected evolution of demand* component may be indication of a need for caution over the sustainability of the recovery. The euro area shows a similar pattern with regard to the three components, although the expectations component decreased mildly.

At the country level, developments in *Germany* and the *UK* were most noteworthy, with confidence improving by 6 points. At the other end of the spectrum we find *Spain*, where confidence dropped by 5 points. In the remaining three larger Member States, confidence was more or less unchanged.

## Consumer confidence unchanged in both the EU and the euro area

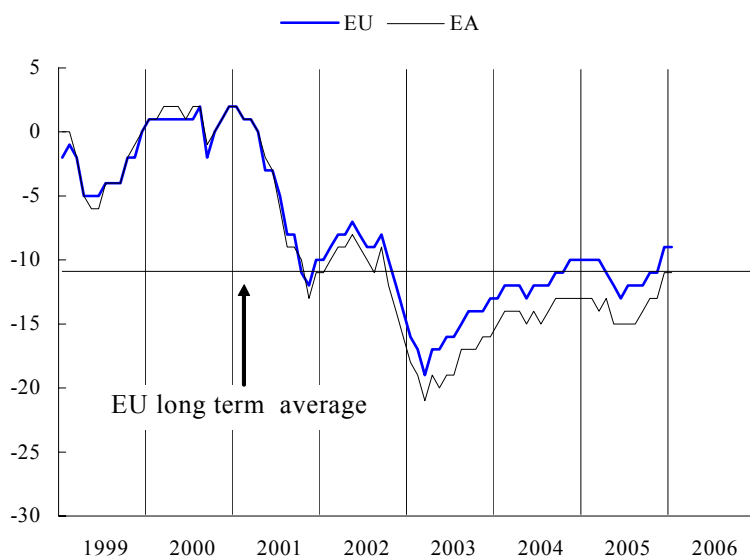
*Consumer confidence* remained unchanged in both the EU and the euro area. Despite this pause in January, the indicators appear to have established a slight upward trend since mid-2005. In both areas, consumer confidence is back at levels last reached in 2002.

The stability of the confidence indicator is reflected in the underlying components. Since last month, EU consumers have not altered their expectations with regard to their *own financial situation*, their *savings* or the *unemployment* situation. Consumers were slightly more positive in their expectations concerning the *general economic situation*.

No major changes in confidence were apparent in the large Member States. *German, French and Polish* consumers were slightly more confident than last month. Consumers in *Spain and Italy*, on the other hand, reported a small drop in confidence. Consumer confidence in the *UK* remained unchanged and has now been standing at the same level for 4 consecutive months.

The results from the *quarterly survey of consumers* show that *intentions to buy a car* and to *carry out home improvements* increased slightly. *Intentions to purchase or build a home* have remained unchanged since October 2005.

GRAPH 4: Consumer confidence indicator

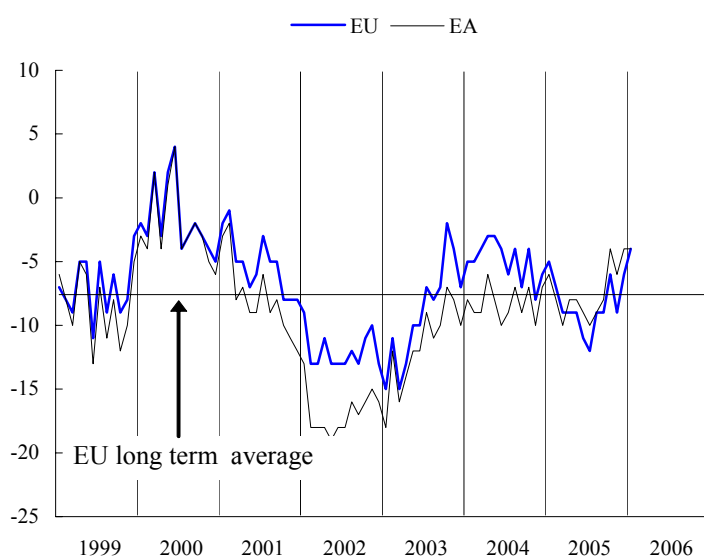


## Further improvement of retail confidence in the EU

Following an improvement of 3 points in December, *retail confidence* in the EU rose by another 2 points. Thus, the indicator stays on the recovery path that started during the summer of 2005. In the euro area, retail confidence remained unchanged.

The rise in overall confidence in the EU was due to a strong improvement in retailers' views of the *present business situation*, and a more positive assessment of their *volume of stocks*. Expectations with regard to the *business situation* did not change among EU retailers. In the euro area, a more positive view of the *volume of stocks* was offset by a deterioration in expectations of the *future business situation*.

GRAPH 5: Retail confidence indicator



Among the larger Member States, a rather divergent picture emerges. Retailers in *Spain and France* became far less confident, while confidence rose drastically among *German and British* retailers. For the *UK*, the indicator rose by a full 9 points for the second month in a row. In *Italy and Poland*, confidence remained broadly unchanged.

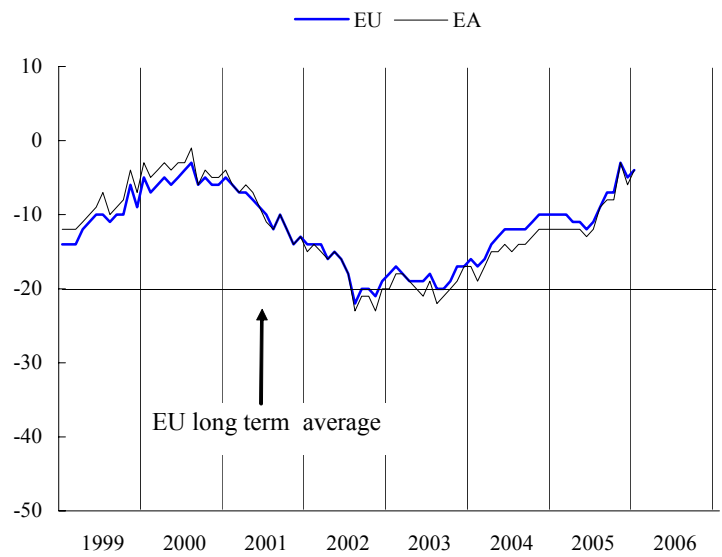
## Recovery of construction confidence

After the unexpected fall in December, the *construction confidence* indicator recovered in January. The indicator improved by 1 point in the EU and by 2 points in the euro area. These positive developments seem to extend the upward trend followed since the summer of 2005.

The rise in confidence was reflected in both underlying components of the indicator. The assessment of *order books* improved by 2 points in the EU and by 3 points in the euro area. Managers' *expectations concerning the employment situation* improved by one point compared to last month.

At the country level, there was a considerable growth of confidence in *Germany, France, Italy and Poland*. *Spanish and British* construction managers, on the other hand, were slightly less confident than one month ago.

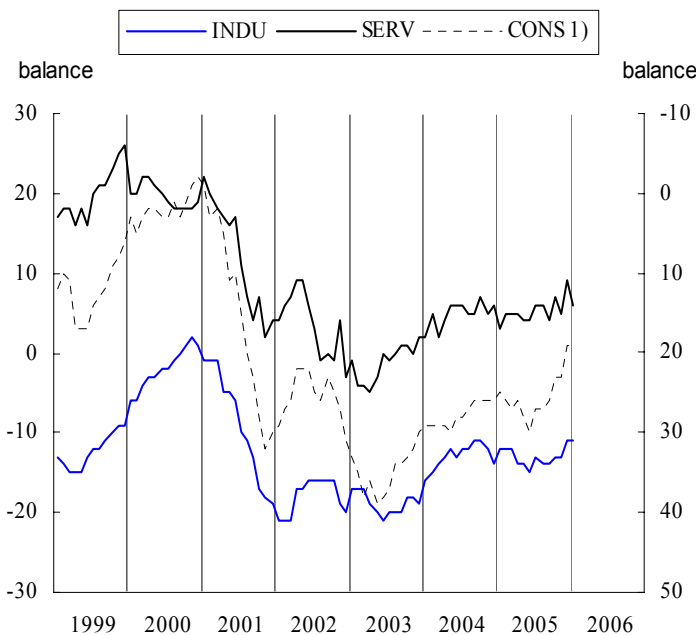
GRAPH 6: Construction confidence indicator



## Employment, unemployment and price expectations in the EU

*Employment expectations* did not continue to improve in January. Managers in the services sector were much less positive about their expectations with regard to the employment situation. Consumers and industrial managers did not alter their expectations since last month. *Price expectations* did barely change. While construction managers foresaw a small downward pressure on prices, the expectations of consumers and of managers in industry were unchanged from their December values.

GRAPH 7: Employment and unemployment



1) Unemployment expectations (Right Hand Scale)

GRAPH 8: Price expectations

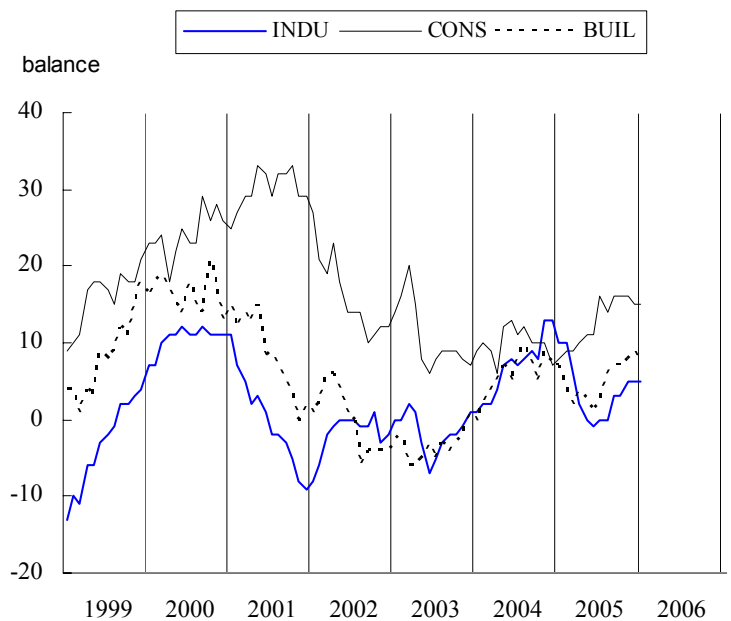


TABLE 1*: Indicators of confidence and economic sentiment(s.a.)		Since 01/1990 <sup>1</sup>														2006				
		2005						2005							Jan.					
		Min.		Ave.		Max.		Feb.	Mar.	Apr.	May	June	July	Aug.			Sep.	Oct.	Nov.	Dec.
		Value	Date	Value	Date	Value	Date													
EU	1. Industry	-28	11-92	-8	7	12-94	-5	-7	-9	-10	-10	-8	-8	-7	-6	-7	-6	-6		
	2. Services	-6	03-03	17	32	08-98	13	10	8	10	9	11	11	11	13	15	12	15		
	3. Consumer	-27	03-93	-11	2	12-00	-10	-10	-11	-12	-13	-12	-12	-12	-11	-11	-9	-9		
	4. Retail trade	-19	12-92	-8	4	07-90	-7	-9	-9	-9	-11	-12	-9	-9	-6	-9	-6	-4		
	5. Construction	-42	10-93	-20	3	02-90	-10	-10	-11	-11	-12	-11	-9	-7	-7	-3	-5	-4		
	=6. ESI	76.7	07-93	100.0	116.4	05-00	102.0	99.5	97.7	97.3	96.9	98.4	98.8	99.9	101.6	101.1	101.3	102.6		
Euro area	1. Industry	-31	07-93	-8	6	05-00	-7	-8	-10	-11	-10	-8	-8	-7	-6	-7	-5	-4		
	2. Services	-5	11-01	18	34	08-98	10	9	8	10	9	12	10	11	14	14	13	15		
	3. Consumer	-29	07-93	-12	2	05-00	-13	-14	-13	-15	-15	-15	-15	-14	-13	-13	-11	-11		
	4. Retail trade	-21	03-93	-9	8	08-90	-8	-10	-8	-8	-9	-10	-9	-8	-4	-6	-4	-4		
	5. Construction	-44	08-96	-20	4	03-90	-12	-12	-12	-12	-13	-12	-9	-8	-8	-3	-6	-4		
	=6. ESI	75.9	07-93	100.0	116.1	05-00	98.5	97.1	96.1	96.1	96.1	97.3	97.6	98.4	100.2	99.9	100.6	101.8		
BE	1. Industry	-33	04-93	-11	5	06-00	-6	-7	-11	-13	-13	-13	-12	-11	-6	-6	-4	-5		
	2. Services	-7	03-03	13	33	03-98	14	11	12	3	9	6	5	14	14	11	14	28		
	3. Consumer	-27	08-93	-6	17	12-00	-3	-1	-4	-11	-11	-11	-10	-14	-6	-9	-6	-4		
	4. Retail trade	-25	05-93	-6	13	04-90	-2	-10	-4	-10	-7	-10	-8	-9	0	-7	-4	-5		
	5. Construction	-35	11-95	-12	10	02-00	-6	-4	-6	-5	-6	-5	-6	-4	-3	-1	-3	1		
	=6. ESI	77.0	04-93	100.0	120.2	06-00	106.6	104.3	101.3	95.6	98.6	96.5	97.5	99.9	105.0	103.3	106.0	110.7		
CZ	1. Industry	-31	03-99	0	27	06-00	8	7	5	4	5	7	6	6	10	9	8	8		
	2. Services	32	06-05	40	47	07-02	39	38	37	37	32	32	37	40	38	34	41	43		
	3. Consumer	-36	03-98	-15	2	11-05	-5	-2	-6	-3	-2	-2	-4	0	-1	2	-1	.		
	4. Retail trade	-1	02-99	14	26	08-02	20	19	14	15	16	16	15	19	20	24	22	15		
	5. Construction	-64	06-99	-18	3	06-95	-4	-7	-9	-8	-10	-7	-7	-1	0	-2	-8	-9		
	=6. ESI	69.6	03-99	100.0	117.6	04-01	107.5	106.5	102.0	103.2	98.5	100.3	103.6	109.5	108.2	105.8	110.5	111.8		
DK	1. Industry	-26	12-98	-2	16	09-94	1	1	-5	0	-2	-4	2	0	3	3	1	4		
	2. Services	11	10-01	26	37	04-04	33	34	33	34	32	29	31	33	31	33	35	34		
	3. Consumer	-11	10-90	7	18	01-06	16	17	14	14	14	13	13	15	16	17	18	18		
	4. Retail trade	-6	10-01	17	37	11-94	28	31	29	28	25	26	27	26	27	25	29	25		
	5. Construction	-37	12-91	-8	21	01-06	4	3	5	8	6	5	3	5	14	16	18	21		
	=6. ESI	74.5	12-98	100.0	121.2	09-94	113.8	114.7	109.3	113.5	110.3	105.2	111.9	111.5	112.5	114.1	114.0	115.3		
DE	1. Industry	-35	04-93	-11	11	09-90	-9	-11	-13	-13	-13	-12	-11	-9	-8	-9	-7	-5		
	2. Services	-18	12-02	25	52	03-99	6	5	3	9	8	11	10	10	11	10	12	18		
	3. Consumer	-28	10-93	-11	6	05-00	-15	-18	-15	-14	-15	-17	-15	-14	-11	-12	-8	-6		
	4. Retail trade	-44	01-03	-18	21	02-91	-22	-30	-25	-23	-22	-25	-23	-25	-19	-24	-24	-16		
	5. Construction	-62	11-02	-36	3	01-91	-55	-51	-50	-47	-45	-44	-43	-38	-38	-35	-35	-32		
	=6. ESI	80.5	07-93	100.0	120.3	09-90	95.0	93.0	92.7	93.6	93.4	94.0	95.0	95.6	97.1	96.4	98.1	100.9		
EE	1. Industry	-31	07-92	5	21	12-05	15	17	13	15	11	12	15	13	19	17	21	14		
	2. Services	5	11-04	24	40	01-06	17	20	23	23	27	31	23	26	25	31	34	40		
	3. Consumer	-56	04-93	-23	9	01-06	-10	-5	-8	-8	-6	-2	-4	-10	1	3	7	9		
	4. Retail trade	-1	04-03	18	30	04-04	20	22	25	22	22	28	21	22	24	23	26	26		
	5. Construction	-46	12-99	4	46	12-05	28	31	32	33	30	29	33	27	29	38	46	45		
	=6. ESI	70.6	07-92	100.0	126.0	01-06	105.8	110.4	110.2	111.0	113.2	117.5	111.4	111.1	115.5	119.6	125.3	126.0		
EL	1. Industry	-12	09-90	0	13	03-00	-4	-7	-4	-9	-10	-10	-8	-6	-6	-2	-2	-1		
	2. Services	-14	04-03	26	62	08-00	18	23	22	16	11	10	12	13	21	20	14	13		
	3. Consumer	-44	07-03	-30	-6	04-00	-32	-33	-35	-31	-36	-32	-33	-35	-37	-36	-36	-31		
	4. Retail trade	-24	06-95	2	27	03-04	5	9	10	4	2	-1	1	5	4	12	11			
	5. Construction	-53	03-05	-12	33	04-00	-48	-53	-48	-31	-38	-49	-47	-45	-40	-36	-34	-30		
	=6. ESI	78.9	09-90	100.0	128.1	07-00	92.3	90.0	91.4	86.5	83.3	84.2	86.4	88.6	88.8	88.7	92.1	93.9		
ES	1. Industry	-44	01-93	-9	7	04-00	-5	-4	-6	-7	-8	-5	-5	-4	-5	-5	-3	-7		
	2. Services	10	10-04	30	56	06-98	12	14	17	27	25	21	23	19	20	22	23	18		
	3. Consumer	-37	10-92	-11	6	03-00	-10	-10	-11	-11	-12	-11	-12	-11	-11	-13	-10	-12		
	4. Retail trade	-36	02-93	-7	10	06-00	-12	-7	-2	-1	-6	-4	-4	-5	-4	-3	-5	-10		
	5. Construction	-57	10-92	-2	42	01-99	26	28	20	15	10	17	25	26	23	39	23	21		
	=6. ESI	69.9	01-93	100.0	116.7	04-00	95.3	97.6	97.7	100.8	98.7	98.1	98.9	98.1	98.7	99.1	101.1	95.4		
FR	1. Industry	-41	06-93	-8	15	06-00	-5	-9	-10	-12	-9	-8	-8	-9	-7	-9	-6	-7		
	2. Services	-22	06-93	3	25	06-90	9	8	6	7	10	11	10	10	11	10	7	8		
	3. Consumer	-34	08-93	-18	4	01-01	-14	-14	-17	-21	-17	-16	-15	-13	-15	-16	-16	-15		
	4. Retail trade	-37	04-97	-16	6	10-04	-3	0	1	-3	-5	-11	-9	-6	-5	-3	0	-10		
	5. Construction	-60	03-93	-16	34	10-00	11	11	8	7	5	9	7	8	12	13	10	14		
	=6. ESI	75.1	06-93	100.0	119.1	04-00	106.2	104.8	102.3	101.1	104.2	104.9	105.4	105.6	105.2	103.8	104.1	104.1		
IE	1. Industry	-23	11-01	-2	21	11-99	1	0	-2	-8	-2	3	-4	-4	-11	-3	-5	-6		
	2. Services	-14	05-03	16	44	08-98	-9	-4	9	-2	-12	7	-6	-2	10	16	19	18		
	3. Consumer	-31	03-93	-4	19	01-00	4	7	1	-1	1	4	1	-4	-3	1	3	4		
	4. Retail trade	-21	05-03	3	24	06-00	-8	-3	-11	-8	-1	-5	2	-10	-7	0	0	-2		
	5. Construction	-54	09-02	10	58	06-97	12	27	29	15	45	34	20	28	24	31	13	13		
	=6. ESI	79.2	06-93	100.0	122.4	11-99	96.1	98.2	98.6	91.1	95.1	100.4	94.4	93.5	94.1	100.7	100.1	99.2		
IT	1. Industry	-22	04-93	-4	13	07-95	-6	-7	-7	-9	-9	-6	-4	-3	-3	-3	-1	1		
	2. Services	-5	11-01	17	44	02-98	13	16	12	10	-1	11	0	14	23	28	19	19		
	3. Consumer	-38	04-93	-13	2	06-01	-18	-18	-16	-17	-19	-21	-21	-21	-20	-17	-17	-19		
	4. Retail trade	-19	10-96	8	39	10-95	14	12	3	13	6	16	19	24	30	22	26	27		
	5. Construction	-68	10-93	-13	21	05-90	2	-5	-3	-1	-5	-8	-3	-5	-10	-6	-2	3		
	=6. ESI	73.0	04-93	100.0	118.9	02-95	96.6	96.3	96.0	95.6	92.7	95.9	93.6	98.1	101.9	103.8	102.7	104.0		
CY	1. Industry	-9	04-03	3	13	04-02	3	6	3	5	0	3	0	1	-1	-3	-1	1		
	2. Services	-21	09-02	5	19	06-05	13	18	15	7	19	15	10	4	3	14	3	6		
	3. Consumer	-43	07-04	-30	-13	06-01	-36	-35	-38	-35										

TABLE 1\* (continued) : Indicators of confidence and economic sentiment (s.a.)

			Since 01/1990 (*)												2006					
			Min.		Ave.		Max.		2005											
			Value	Date	Value	Date	Value	Date	Feb.	Mar.	Apr.	May	June	July	Aug.	Sep.	Oct.	Nov	Dec.	Jan.
<b>LT</b>	1. Industry	-37	11-98	-14	5	10-05	-7	-3	-4	-8	-2	4	-3	4	5	1	4	4		
	2. Services	9	04-05	18	33	11-05	12	12	9	16	16	25	17	23	28	33	27	32		
	3. Consumer	-32	05-01	-13	-1	10-04	-3	-5	-1	-4	-3	-4	-6	-7	-5	-1	-2	-2		
	4. Retail trade	-25	09-00	-4	26	06-04	10	-5	-1	3	7	14	13	12	13	17	15	17		
	5. Construction	-76	09-00	-40	7	12-05	-5	-2	-22	-11	-4	1	1	2	1	7	7	6		
	=6. ESI	74.8	11-98	100.0	137.3	11-05	115.0	115.6	115.9	115.6	121.4	131.6	121.0	127.9	133.6	137.3	134.0	137.0		
<b>LU</b>	1. Industry	-35	05-92	-10	26	04-95	-6	2	-9	-18	-17	-20	-21	-18	-10	-9	-4	-5		
	2. Services	..	..	..	..	..	..	..	..	..	..	..	..	..	..	..	..	..		
	3. Consumer	-4	09-05	3	14	02-02	2	4	3	2	-2	0	-1	-4	-1	1	-1	2		
	4. Retail trade	..	..	..	..	..	..	..	..	..	..	..	..	..	..	..	..	..		
	5. Construction	-73	03-94	-26	24	03-90	-22	-29	-20	-21	-26	-33	-26	-32	-22	-20	-22	-19		
	=6. ESI	82.9	06-96	100.0	123.1	04-95	100.2	106.2	98.9	93.9	94.3	91.2	92.6	90.8	97.5	98.5	100.0	101.7		
<b>HU</b>	1. Industry	-15	05-99	-3	8	12-97	-12	-12	-14	-14	-12	-11	-10	-6	-5	-6	-3	-3		
	2. Services	-10	10-04	1	14	03-02	-1	-5	-8	-4	-8	-4	-1	0	2	2	-7	4		
	3. Consumer	-58	04-95	-28	0	08-02	-21	-24	-28	-30	-32	-27	-26	-24	-26	-21	-17	-15		
	4. Retail trade	-28	05-05	-8	9	11-97	-20	-28	-24	-28	-25	-17	-26	-13	-12	-12	-12	-13		
	5. Construction	-24	12-04	-8	11	09-98	-20	-17	-17	-17	-21	-15	-16	-9	-13	-10	-15	-16		
	=6. ESI	71.9	04-05	100.0	123.5	04-98	83.1	75.2	71.9	74.9	72.3	80.2	83.0	91.0	94.2	95.2	87.9	101.8		
<b>MT</b>	1. Industry	-25	07-05	-10	5	12-05	-3	-19	-19	4	2	-25	-20	-20	-8	-15	5	..		
	2. Services	..	..	..	..	..	..	..	..	..	..	..	..	..	..	..	..	..		
	3. Consumer	-34	05-05	-23	0	01-03	-29	-28	-32	-34	-33	-33	-33	-29	-29	-29	-29	-24		
	4. Retail trade	..	..	..	..	..	..	..	..	..	..	..	..	..	..	..	..	..		
	5. Construction	..	..	..	..	..	..	..	..	..	..	..	..	..	..	..	..	..		
	=6. ESI	..	..	..	..	..	..	..	..	..	..	..	..	..	..	..	..	..		
<b>NL</b>	1. Industry	-12	05-93	-2	6	10-00	-2	-1	-2	-2	-4	-6	-4	-2	1	0	-1	0		
	2. Services	3	06-03	16	35	12-97	11	7	10	6	9	6	4	6	9	8	8	5		
	3. Consumer	-19	07-93	4	31	03-00	-4	-3	2	-4	-5	-4	-7	-7	-2	-2	3	3		
	4. Retail trade	-16	12-03	12	30	10-99	-10	-6	-4	-10	-8	-10	-9	-7	-3	-3	7	7		
	5. Construction	-25	05-03	-3	27	12-00	-5	-2	-1	-1	1	4	6	4	6	4	6	3	3	
	=6. ESI	79.0	05-93	100.0	117.5	12-97	94.8	94.7	95.9	94.2	92.4	89.7	91.0	93.0	97.9	96.7	97.3	98.5		
<b>AT</b>	1. Industry	-30	06-93	-12	8	03-90	-9	-11	-11	-10	-11	-12	-10	-7	-9	-8	-9	-5		
	2. Services	0	01-02	15	30	03-98	12	9	12	10	7	10	9	8	8	12	12	16		
	3. Consumer	-16	04-96	-1	11	07-00	-3	-2	0	-3	-3	-4	-4	-5	-3	-2	-3	2		
	4. Retail trade	-29	03-03	-13	4	07-00	-14	-10	-9	-15	-14	-13	-13	-10	-8	-9	-8	-4		
	5. Construction	-60	04-96	-29	-12	01-06	-22	-24	-24	-20	-16	-23	-18	-14	-13	-14	-12	-12		
	=6. ESI	71.6	04-96	100.0	119.8	05-00	101.7	98.5	101.9	99.8	97.9	98.5	99.4	100.3	100.8	105.2	102.9	111.3		
<b>PL</b>	1. Industry	-29	10-01	-14	9	09-97	-11	-13	-14	-14	-13	-13	-13	-11	-13	-12	-11	-12		
	2. Services (n)	-7	01-03	2	11	01-06	10	7	7	6	4	8	7	7	8	10	10	11		
	3. Consumer	-40	08-01	-29	-13	01-06	-19	-18	-18	-21	-23	-23	-22	-20	-18	-15	-14	-13		
	4. Retail trade	-19	01-02	-6	7	07-98	-6	-7	-8	-7	-6	-6	-5	-5	-5	-1	-4	-4		
	5. Construction	-63	12-02	-42	-21	11-05	-32	-30	-29	-29	-31	-29	-28	-27	-24	-21	-25	-21		
	=6. ESI	75.9	02-99	100.0	150.1	01-06	142.0	132.4	131.9	127.3	120.2	129.7	126.6	131.5	134.1	143.3	145.8	150.1		
<b>PT</b>	1. Industry	-28	06-93	-7	7	03-98	-11	-10	-6	-10	-14	-14	-12	-10	-7	-8	-10	-10		
	2. Services	-17	05-03	7	29	06-01	5	-3	-3	1	-4	-9	2	-1	-3	-3	4	-5		
	3. Consumer	-49	03-03	-23	-1	07-91	-34	-31	-30	-31	-39	-42	-42	-41	-41	-40	-41	-41		
	4. Retail trade	-27	01-03	-8	4	01-99	-10	-7	-7	-10	-13	-17	-19	-19	-17	-20	-11	-6		
	5. Construction	-56	02-03	-26	-1	12-97	-40	-34	-39	-34	-42	-44	-39	-41	-31	-38	-39	-35		
	=6. ESI	73.9	06-93	100.0	113.6	05-97	92.0	91.2	95.1	93.2	86.7	83.3	88.2	88.6	90.7	89.5	90.8	90.8		
<b>SI</b>	1. Industry	-21	03-99	-3	18	06-00	-2	0	-3	-3	-2	-3	-2	-1	0	-1	3	5		
	2. Services	12	05-05	23	32	10-02	21	14	12	12	15	19	18	18	14	17	15	16		
	3. Consumer	-29	06-99	-19	-9	10-04	-13	-15	-13	-13	-18	-18	-17	-21	-22	-26	-24	-16		
	4. Retail trade	3	01-01	11	23	04-99	10	8	14	13	13	18	16	16	16	19	17	21		
	5. Construction	-33	06-02	-8	6	01-05	2	2	-2	-4	-7	-8	-9	-8	-11	-10	-10	-16		
	=6. ESI	76.8	03-99	100.0	131.3	06-00	102.0	92.0	92.5	92.2	91.5	97.0	98.2	95.6	90.3	93.0	94.6	101.0		
<b>SK</b>	1. Industry	-22	12-95	5	26	05-96	13	12	11	6	8	-2	-1	7	2	4	-2	-4		
	2. Services	27	09-05	46	60	06-03	38	33	37	33	33	40	31	27	28	30	41	47		
	3. Consumer	-50	08-99	-30	-9	06-05	-13	-13	-10	-12	-9	-12	-14	-24	-18	-12	-14	-14		
	4. Retail trade	-17	10-93	8	34	11-98	5	12	15	12	20	16	12	15	16	22	24	14		
	5. Construction	-86	07-99	-27	18	03-97	-17	-13	-11	-11	-9	-7	-10	-9	-11	-5	-6	-10		
	=6. ESI	71.2	03-99	100.0	125.5	05-96	105.4	99.5	104.8	98.2	102.5	98.9	92.5	87.5	89.9	95.2	101.8	100.1		
<b>FI</b>	1. Industry	-24	01-93	2	30	10-94	4	6	-3	-2	10	19	15	12	11	11	2	3		
	2. Services	-12	09-03	26	61	09-00	33	32	25	34	38	41	41	40	37	35	38	31		
	3. Consumer	6	11-01	15	23	02-00	16	17	14	14	10	12	15	13	16	17	17	14		
	4. Retail trade	-17	11-00	-4	10	05-04	-8	-4	-1	1	6	4	2	7	10	9	6	6		
	5. Construction	-97	09-91	-17	48	06-98	12	16	21	13	14	21	22	10	12	19	22			
	=6. ESI	74.6	04-91	100.0	120.7	11-94	105.8	107.1	101.4	104.9	110.5	115.0	113.5	111.5	111.1	111.5	108.4	106.2		
<b>SE</b>	1. Industry	-29	10-01	-5	15	05-00	0	-7	-9	-7	-10	-10	-7	-10	-2	-7	-4	2		
	2. Services	-24	01-03	17	46	12-00	30	32	31	27	32	32	26	34	37	42	33	37		
	3. Consumer	-10	09-96	7	25	03-00	8	7	6	5	3	3	4	6	8	8	10	12		
	4. Retail trade	-8	09-01	7	27	01-06	2	0	1	-2	3	7	11	13	14	17	21	27		
	5. Construction	-83	12-93	-36	27	01-06	3	-3	6	6	15	27	8	21	14	15	19	27		
	=6. ESI	79.0	10-01	100.0	127.1	03-00	110.0	107.0	105.1	104.4	105.4	106.0	106.3	107.8	112.3	110.7	110.7	115.8		
<b>UK</b>	1. Industry	-40	02-91	-12	11	02-95	0	-5	-10	-13	-17	-10	-17	-10	-10					

		Since 01/1990						2005											2006
		Min.		Ave.		Max.		Feb.	Mar.	Apr.	May	June	July	Aug.	Sep.	Oct.	Nov.	Dec.	Jan.
Value	Date	Value	Date	Value	Date														
INDUSTRIAL CONFIDENCE INDICATOR	EU	-28	11-92	-8	7	12-94	-5	-7	-9	-10	-10	-10	-8	-8	-7	-6	-7	-6	-6
	<b>Euro area</b>	-31	07-93	-8	6	05-00	-7	-8	-10	-11	-10	-10	-8	-8	-7	-6	-7	-5	-4
	BE	-33	04-93	-11	5	06-00	-6	-7	-11	-13	-13	-13	-12	-11	-6	-6	-4	-4	-5
	CZ	-31	03-99	0	27	06-00	8	7	5	4	5	7	6	6	10	9	8	8	8
	DK	-26	12-98	-2	16	09-94	1	1	-5	0	-2	-4	2	0	3	3	1	4	4
	DE	-35	04-93	-11	11	09-90	-9	-11	-13	-13	-13	-12	-11	-9	-8	-9	-7	-7	-5
	EE	-31	07-92	5	21	12-05	15	17	13	15	11	12	15	13	19	17	21	21	14
	EL	-12	09-90	0	13	03-00	-4	-7	-4	-9	-10	-10	-8	-6	-6	-6	-2	-1	-1
	ES	-44	01-93	-9	7	04-00	-5	-4	-6	-7	-8	-5	-5	-4	-5	-5	-3	-7	-7
	FR	-41	06-93	-8	15	06-00	-5	-9	-10	-12	-9	-8	-8	-9	-7	-9	-6	-7	-7
	IE	-23	11-01	-2	21	11-99	1	0	-2	-8	-2	3	-4	-4	-11	-3	-5	-6	-6
	IT	-22	04-93	-4	13	07-95	-6	-7	-7	-9	-9	-6	-4	-3	-3	-3	-1	1	1
	CY	-9	04-03	3	13	04-02	3	6	3	5	0	3	0	1	-1	-3	-1	1	1
	LV	-45	04-93	-10	8	12-05	3	3	4	5	4	5	6	7	5	7	8	5	5
	LT	-37	11-98	-14	5	10-05	-7	-3	-4	-8	-2	4	-3	4	5	1	4	4	4
	LU	-35	05-92	-10	26	04-95	-6	2	-9	-18	-17	-20	-21	-18	-10	-9	-4	-5	-5
	HU	-15	05-99	-3	8	12-97	-12	-12	-14	-14	-12	-11	-10	-6	-5	-6	-3	-3	-3
	MT	-25	07-05	-10	5	12-05	-3	-19	-19	4	2	-25	-20	-20	-8	-15	5	.	.
	NL	-12	05-93	-2	6	10-00	-2	-1	-2	-2	-4	-6	-4	-2	1	0	-1	0	0
	AT	-30	06-93	-12	8	03-90	-9	-11	-11	-10	-11	-12	-10	-7	-9	-8	-9	-5	-5
	PL	-29	10-01	-14	9	09-97	-11	-13	-14	-14	-13	-13	-13	-11	-13	-12	-11	-12	-12
	PT	-28	06-93	-7	7	03-98	-11	-10	-6	-10	-14	-14	-12	-10	-7	-8	-10	-10	-10
	SI	-21	03-99	-3	18	06-00	-2	0	-3	-3	-2	-3	-2	-1	0	-1	3	5	5
	SK	-22	12-95	5	26	05-96	13	12	11	6	8	-2	-1	7	2	4	-2	-4	-4
	FI	-24	01-93	2	30	10-94	4	6	-3	-2	10	19	15	12	11	11	2	3	3
SE	-29	10-01	-5	15	05-00	0	-7	-9	-7	-10	-10	-7	-10	-2	-7	-4	2	2	
UK	-40	02-91	-12	11	02-95	0	-5	-10	-13	-17	-10	-17	-10	-10	-15	-15	-19	-19	
PRODUCTION EXPECTATIONS	EU	-16	11-92	6	23	12-94	9	7	5	4	4	5	7	7	9	7	8	9	
	<b>Euro area</b>	-18	12-92	5	21	12-94	6	6	4	2	4	4	6	7	8	6	8	9	
Component of the industrial confidence indicator	BE	-36	04-93	-3	16	12-94	0	3	3	-1	-4	-4	-2	-2	4	3	5	2	
	CZ	-26	05-93	22	61	05-95	22	24	22	26	31	30	28	28	35	36	30	29	
	DK	-23	12-98	10	30	02-98	10	17	4	12	7	-1	10	8	14	15	14	13	
	DE	-26	11-92	1	20	12-94	2	0	-2	-3	-1	3	4	5	2	4	9	9	
	EE	-70	04-92	19	68	03-02	37	38	25	32	22	17	27	23	30	27	29	19	
	EL	3	02-91	26	44	02-00	23	19	22	14	19	14	16	17	18	14	22	25	
	ES	-19	01-93	5	17	12-00	3	9	12	9	5	5	5	7	6	7	10	4	
	FR	-30	07-93	6	27	10-00	9	7	3	3	7	7	7	4	7	4	10	7	
	IE	-22	11-01	9	35	11-99	24	1	7	-3	4	17	2	-3	-10	7	1	-10	
	IT	-12	12-92	13	31	12-94	14	10	11	9	7	9	11	13	15	13	14	16	
	CY	1	05-02	13	34	12-04	5	19	10	23	4	16	5	10	11	2	8	10	
	LV	-21	04-93	16	41	03-02	19	19	19	23	20	21	23	24	21	24	25	20	
	LT	-22	04-94	12	35	08-97	6	16	26	10	19	29	20	29	26	21	27	24	
	LU	-42	10-91	-4	28	04-95	14	15	0	-10	5	-10	-15	-11	-3	2	2	7	
	HU	-10	06-05	12	34	12-97	-3	-6	-6	-8	-10	-2	-4	8	7	2	4	7	
	MT	-28	09-05	12	37	03-03	6	-17	1	-11	-15	-5	-12	-28	13	10	37	.	
	NL	-4	04-93	6	15	11-99	5	8	6	6	4	-2	5	6	13	9	6	11	
	AT	-19	06-93	4	18	11-03	6	11	9	11	8	6	7	13	10	8	6	14	
	PL	-4	10-01	20	44	02-03	17	15	14	16	16	16	17	21	17	20	23	18	
	PT	-11	03-93	5	21	01-97	-3	0	10	1	-5	-5	-4	-4	0	-1	1	-2	
	SI	10	10-01	23	42	06-00	26	29	24	28	24	19	24	27	26	29	23	26	
	SK	-12	12-95	31	62	12-97	38	36	37	27	26	8	6	40	25	32	10	9	
	FI	-26	06-91	13	50	07-05	20	30	14	10	32	50	41	38	30	33	14	14	
	SE	-19	05-91	15	46	05-00	23	9	12	18	15	11	16	13	29	18	22	30	
	UK	-38	02-91	5	33	02-95	16	9	5	0	-4	5	0	5	3	1	1	-6	
ORDER BOOKS	EU	-50	07-93	-20	1	02-95	-15	-17	-20	-22	-22	-19	-20	-18	-17	-18	-15	-15	
	<b>Euro area</b>	-54	07-93	-19	4	06-00	-16	-17	-19	-21	-21	-18	-18	-16	-16	-16	-13	-12	
Component of the industrial confidence indicator	BE	-51	05-93	-20	11	06-00	-18	-17	-23	-26	-28	-25	-29	-23	-20	-17	-14	-11	
	CZ	-50	12-98	-7	30	01-01	3	-3	-3	-6	-6	-5	-4	-3	-3	0	-1	-1	
	DK	-41	04-99	-6	32	12-94	-3	-5	-7	-8	-6	2	4	3	7	4	5	10	
	DE	-61	07-93	-24	12	07-90	-17	-19	-22	-22	-23	-21	-23	-19	-18	-19	-14	-13	
	EE	-43	10-92	1	29	06-01	5	10	10	6	8	12	10	10	21	11	22	14	
	EL	-31	06-05	-13	7	05-98	-21	-24	-20	-24	-31	-25	-24	-22	-20	-16	-14	-14	
	ES	-65	01-93	-16	11	07-98	-8	-10	-14	-14	-15	-8	-7	-7	-11	-9	-5	-11	
	FR	-64	06-93	-16	27	06-00	-14	-19	-17	-21	-17	-16	-16	-19	-15	-18	-17	-15	
	IE	-36	06-93	-7	24	12-99	-14	2	-9	-7	-4	-3	-8	-1	-17	-14	-11	-7	
	IT	-47	06-93	-16	13	02-95	-21	-20	-22	-24	-24	-20	-14	-14	-16	-15	-11	-12	
	CY	-39	02-03	-18	-3	07-05	-12	-6	-4	-8	-9	-3	-8	-7	-12	-10	-5	-10	
	LV	-79	07-93	-39	-7	12-05	-16	-14	-13	-15	-13	-12	-9	-9	-11	-8	-7	-10	
	LT	-79	11-98	-42	-9	11-93	-25	-24	-30	-29	-24	-18	-24	-17	-15	-23	-20	-19	
	LU	-64	02-92	-18	34	12-97	-20	-11	-16	-23	-37	-30	-38	-24	-18	-15	-10	-14	
	HU	-40	03-03	-19	0	04-98	-28	-23	-33	-31	-29	-27	-25	-20	-16	-18	-11	-13	
	MT	-62	05-03	-31	10	06-05	-4	-21	-37	9	10	-35	-32	-23	-25	-30	-6	.	
	NL	-25	01-93	-8	6	11-00	-4	-5	-8	-7	-9	-9	-10	-6	-5	-5	-4	-5	
	AT	-57	04-96	-25	11	03-90	-27	-32	-31	-27	-30	-31	-31	-26	-29	-25	-25	-23	
	PL	-77	01-02	-58	8	09-97	-48	-51	-53	-54	-54	-54	-53	-52	-54	-54	-52	-50	
	PT	-52	07-93	-19	9	03-98	-21	-24	-26	-26	-31	-30	-30	-21	-20	-20	-22	-22	
	SI	-51	03-99	-18	12	06-00	-19	-14	-18	-19	-15	-14	-13	-16	-14	-17	-6	-5	
	SK	-70	03-99	-8	49	09-94	5	3	-8	-8	-4	-14	-4	-13	-14	-14	-14	-8	
	FI	-70	09-91	-13	40	11-94	6	2	0	-4	-2	1	-1	-2	9	4	2	8	
	SE	-67	03-92	-23	25	12-94	-11	-14	-20	-22	-27	-26	-24	-25	-17	-18	-15	-8	
	UK	-62	07-91	-22	11	02-95	-7	-9	-21	-23	-27	-17	-29	-23	-19	-26	-26	-29	



TABLE 2a: (continued) Monthly survey of manufacturing industry (s.a.)<sup>(a)</sup>

		Since 01/1990						2005												2006
		Min.		Ave.		Max.		Feb.	Mar.	Apr.	May	June	July	Aug.	Sep.	Oct.	Nov.	Dec.	Jan.	
		Value	Date	Value	Date	Value	Date													
STOCKS OF FINISHED PRODUCTS <sup>(b)</sup>	<b>EU</b>	3	12-94	11	22	06-93		9	12	13	14	13	12	12	10	10	11	11	11	
	<b>Euro area</b>	2	11-94	11	24	04-93		10	12	13	14	12	11	11	10	10	9	10	9	
Component of the industrial confidence indicator	<b>BE</b>	-4	02-95	9	26	10-01		1	6	12	11	7	11	5	7	3	3	4	5	
	<b>CZ</b>	-12	04-00	16	46	08-93		0	0	5	9	11	2	7	8	4	7	8	5	
	<b>DK</b>	-7	03-94	10	28	06-99		3	10	11	4	7	13	6	10	11	10	16	11	
	<b>DE</b>	-9	09-90	10	25	07-93		11	13	13	15	14	13	13	11	11	11	11	10	
	<b>EE</b>	-16	05-92	6	39	06-93		-2	-4	-5	-5	-4	-7	-7	-6	-7	-12	-12	-9	
	<b>EL</b>	1	06-94	12	22	09-90		13	15	16	18	18	18	15	13	16	17	15	15	
	<b>ES</b>	-1	11-02	15	47	01-93		11	12	16	14	15	13	13	12	8	13	13	15	
	<b>FR</b>	-2	04-00	14	34	06-93		10	15	16	18	17	14	13	13	12	12	12	12	
	<b>IE</b>	-13	12-99	6	23	11-93		7	2	5	15	5	6	7	8	5	2	4	2	
	<b>IT</b>	-1	07-95	8	17	10-90		10	11	11	11	8	9	10	8	7	6	6	3	
	<b>CY</b>	-34	09-01	-13	6	12-05		-15	-6	-3	-1	-5	4	-2	-1	3	2	6	-3	
	<b>LV</b>	-12	03-04	7	43	07-93		-5	-4	-5	-7	-4	-4	-5	-5	-5	-5	-6	-4	
	<b>LT</b>	-16	01-95	12	49	01-94		2	1	7	4	2	-1	4	-1	-3	-3	-4	-7	
	<b>LU</b>	-22	03-95	8	31	03-02		12	0	10	19	18	20	10	18	10	14	5	6	
	<b>HU</b>	-7	11-03	3	15	12-98		4	8	3	2	-2	4	3	6	5	2	3	2	
	<b>MT</b>	-14	05-05	10	34	07-05		9	19	20	-14	-12	34	16	8	11	23	16	.	
	<b>NL</b>	-1	12-94	5	11	06-91		5	5	5	4	6	5	6	6	6	5	5	5	
	<b>AT</b>	4	03-90	14	26	04-96		7	12	11	12	11	10	8	9	10	6	8	6	
	<b>PL</b>	-11	10-94	3	20	02-99		2	1	2	2	1	2	4	3	3	4	3	4	
	<b>PT</b>	-7	09-04	8	25	06-93		8	6	2	5	6	8	4	6	0	2	8	6	
	<b>SI</b>	-1	06-00	14	28	02-96		14	15	16	17	15	14	15	15	12	14	7	8	
	<b>SK</b>	-27	02-01	9	55	05-94		4	2	-4	1	0	1	5	7	5	7	3	13	
	<b>FI</b>	-20	04-95	4	31	01-96		14	13	23	13	-1	-8	-6	0	5	5	9	13	
	<b>SE</b>	3	03-00	17	37	11-01		12	15	20	17	17	15	12	18	17	22	19	16	
	<b>UK</b>	6	03-04	17	32	11-98		8	13	15	17	20	19	23	10	13	20	19	23	
	PRODUCTION TREND OBSERVED IN RECENT MONTHS	<b>EU</b>	-23	01-93	-1	19	01-95		4	-1	-5	-3	-2	1	-2	0	1	1	4	1
		<b>Euro area</b>	-25	01-93	-2	16	01-95		1	-4	-5	-4	-4	-1	-3	-1	0	0	4	1
<b>BE</b>		-20	02-93	-1	16	05-97		-4	-1	-4	-6	-10	-6	-6	3	2	-2	8	-2	
<b>CZ</b>		-32	10-98	12	42	11-00		20	8	8	11	7	14	12	24	23	20	20	14	
<b>DK</b>		-21	04-99	11	41	09-94		3	-1	1	8	12	15	9	8	11	12	17	23	
<b>DE</b>		-32	02-02	-4	22	12-90		-3	-8	-9	-8	-6	-2	-1	-8	-1	0	-1	7	
<b>EE</b>		-24	03-99	14	56	06-01		9	22	30	27	22	22	22	22	21	20	24	24	
<b>EL</b>		-5	10-90	14	36	01-00		6	7	-3	3	4	6	4	1	6	7	16	20	
<b>ES</b>		-44	04-93	0	21	04-95		5	2	-6	1	0	5	0	-4	-2	3	-1	-1	
<b>FR</b>		-38	07-93	4	36	01-95		15	9	5	4	9	8	7	6	3	6	4	2	
<b>IE</b>		-25	10-01	6	38	03-00		9	-3	10	6	4	6	13	-6	3	6	0	3	
<b>IT</b>		-36	06-93	-10	14	03-95		-13	-15	-16	-16	-18	-16	-7	-10	-12	-12	-9	-8	
<b>CY</b>		-36	04-03	-9	12	04-05		-7	-5	12	1	-6	-2	-1	-14	-1	0	-4	-13	
<b>LV</b>		-49	04-93	3	29	06-01		9	11	13	9	16	16	11	15	12	18	21	19	
<b>LT</b>		-36	07-94	1	34	04-98		7	-6	-16	8	7	21	16	19	21	4	31	14	
<b>LU</b>		-41	04-92	-2	32	04-95		12	-7	-2	-19	-9	-18	-5	0	-2	-1	5	-4	
<b>HU</b>		-30	06-99	-1	27	04-98		-11	-16	-23	-13	-15	-13	-9	3	1	0	8	7	
<b>MT</b>		-33	05-03	-3	34	12-05		4	-9	2	25	3	-13	-13	1	20	14	34	.	
<b>NL</b>		-12	05-93	3	14	10-97		-2	-1	3	4	-3	0	-5	10	4	-2	5	6	
<b>AT</b>		-28	06-93	5	27	03-90		7	4	4	6	5	9	9	6	12	16	16	14	
<b>PL</b>		-18	07-96	0	23	04-04		5	-7	-14	-3	2	8	0	5	5	6	18	12	
<b>PT</b>		-18	01-93	-2	15	08-94		-5	-10	-18	-5	-12	-12	-7	-3	2	-6	-3	-11	
<b>SI</b>		-20	02-99	8	39	05-00		1	2	8	6	10	8	-8	9	9	2	16	13	
<b>SK</b>		-30	12-96	16	78	12-03		27	24	30	34	34	13	5	-20	-2	6	43	20	
<b>FI</b>		-28	06-91	11	53	12-04		42	8	13	5	-3	7	-4	3	21	18	25	22	
<b>SE</b>		-28	07-91	9	48	12-94		17	13	12	8	6	2	3	17	23	15	17	16	
<b>UK</b>		-46	06-91	-2	34	03-95		13	9	-7	-4	4	5	-5	-10	-6	0	-10	-8	
EXPORT ORDER BOOKS	<b>EU</b>	-45	01-93	-20	1	02-95		-12	-15	-19	-20	-21	-18	-19	-17	-16	-15	-12	-12	
	<b>Euro area</b>	-52	06-93	-21	2	06-00		-12	-15	-18	-19	-19	-18	-18	-17	-15	-14	-11	-11	
	<b>BE</b>	-56	05-93	-22	7	06-00		-22	-20	-30	-32	-34	-31	-35	-24	-23	-24	-18	-17	
	<b>CZ</b>	-41	12-98	-3	26	09-00		0	-10	-9	-8	-8	-10	-6	-7	-6	-7	0	-5	
	<b>DK</b>	-39	04-99	-4	25	09-94		-4	-6	-8	-8	-6	6	2	4	2	5	3	3	
	<b>DE</b>	-60	08-93	-27	0	02-90		-8	-12	-14	-13	-15	-16	-17	-13	-12	-12	-7	-10	
	<b>EE</b>	-37	03-99	1	25	03-01		0	-4	3	0	3	1	2	-1	2	0	5	9	
	<b>EL</b>	-36	05-03	-16	13	03-95		-18	-19	-21	-20	-27	-21	-23	-24	-19	-12	-5	-7	
	<b>ES</b>	-55	01-93	-19	6	05-95		-15	-15	-23	-22	-24	-18	-19	-24	-25	-16	-17	-19	
	<b>FR</b>	-65	07-93	-13	36	06-00		-9	-13	-14	-21	-18	-15	-15	-16	-12	-12	-13	-9	
	<b>IE</b>	-53	09-93	-7	38	04-00		-20	-1	-27	-5	-2	-5	7	-5	-23	-11	-23	2	
	<b>IT</b>	-43	09-92	-18	19	02-95		-20	-23	-24	-26	-27	-25	-20	-20	-18	-18	-13	-12	
	<b>CY</b>	-53	05-03	-25	5	05-05		-34	-4	-18	5	-10	-12	-10	-14	-25	-11	-13	-10	
	<b>LV</b>	-59	12-98	-36	-15	12-03		-20	-19	-23	-21	-20	-19	-16	-20	-16	-17	-15	-15	
	<b>LT</b>	-65	04-99	-36	-14	06-01		-27	-31	-29	-29	-29	-22	-25	-18	-19	-24	-25	-21	
	<b>LU</b>	-75	11-91	-23	45	04-00		-26	-28	-27	-41	-45	-41	-45	-30	-25	-21	-20	-21	
	<b>HU</b>	-44	12-02	-16	7	02-98		-30	-29	-32	-30	-28	-32	-30	-26	-25	-17	-12	-16	
	<b>MT</b>	-80	09-03	-33	9	06-05		-15	-21	-44	1	9	-43	-30	-20	-28	-25	1	.	
	<b>NL</b>	-24	01-93	-6	11	09-00		-1	-3	-3	-6	-8	-5	-7	-4	-3	-5	-2	0	
	<b>AT</b>	-58	04-96	-34	-1	03-90		-37	-39	-41	-39	-39	-41	-42	-37	-39	-37	-33	-33	
	<b>PL</b>	-75	05-99	-57	13	07-97		-52	-58	-56	-59	-57	-56	-59	-57	-57	-58	-56	-56	
	<b>PT</b>																			

TABLE 2a: (continued) **Monthly survey of manufacturing industry (s.a.)** <sup>(a)</sup>

		Since 01/1990						2005												2006
		Min.		Ave.		Max.		Feb.	Mar.	Apr.	May	June	July	Aug.	Sep.	Oct.	Nov.	Dec.	Jan.	
		Value	Date	Value	Date	Value	Date													
EMPLOYMENT EXPECTATIONS	<b>EU</b>	-39	06-93	-15	2	11-00	-12	-12	-14	-14	-15	-13	-14	-14	-13	-13	-11	-11	-11	
	<b>Euro area</b>	-42	06-93	-14	4	11-00	-12	-13	-14	-14	-15	-13	-13	-14	-14	-12	-12	-10	-11	
	<b>BE</b>	-26	09-93	-9	9	09-00	-8	-10	-12	-14	-16	-15	-15	-12	-11	-10	-5	-7	-7	
	<b>CZ</b>	-58	06-99	-25	2	03-01	-7	-7	-8	-10	-8	-11	-9	-5	-10	-6	-7	-10	-10	
	<b>DK</b>	-23	06-93	-3	13	03-98	-3	3	-10	-4	-7	-9	1	-4	2	2	0	0	1	
	<b>DE</b>	-52	06-93	-18	8	02-90	-17	-21	-21	-19	-18	-17	-17	-17	-15	-17	-14	-14	-14	
	<b>EE</b>	-78	04-92	-12	16	03-05	11	16	14	13	8	1	4	4	9	7	4	4	5	
	<b>EL</b>	-12	12-04	-2	12	05-02	-6	-3	-11	-9	-9	-10	-8	-5	-6	-7	-3	-7	-7	
	<b>ES</b>	-53	06-93	-9	9	03-01	-2	-3	2	-1	-4	-8	-8	-8	-12	-12	-5	-8	-8	
	<b>FR</b>	-50	09-93	-17	12	09-00	-18	-12	-23	-21	-20	-15	-18	-21	-17	-14	-17	-19	-19	
	<b>IE</b>	-34	12-92	-10	16	09-00	-6	-5	-1	4	-4	1	-15	-11	-12	-14	-13	-7	-7	
	<b>IT</b>	-30	08-96	-4	11	11-00	-2	-3	-3	-3	-7	-6	-3	-6	-5	-4	-2	0	0	
	<b>CY</b>	-15	04-02	11	40	10-04	10	8	21	10	10	24	9	10	33	12	13	25	25	
	<b>LV</b>	-51	04-93	-8	11	11-05	3	4	5	7	8	9	6	7	10	11	9	8	8	
	<b>LT</b>	-59	04-94	-27	8	10-05	-5	2	1	-10	-6	0	-4	1	8	0	6	-2	-2	
	<b>LU</b>	-55	12-91	-27	1	09-01	-19	-26	-16	-31	-23	-39	-29	-27	-24	-26	-29	-31	-31	
	<b>HU</b>	-60	12-91	-17	10	10-97	-14	-13	-16	-21	-19	-14	-12	-12	-15	-15	-12	-11	-11	
	<b>MT</b>	-26	11-05	-3	18	12-02	-25	4	-15	11	16	-21	-15	-14	-23	-26	-5	:	:	
	<b>NL</b>	-30	06-93	-8	15	06-90	-9	-10	-11	-12	-10	-13	-10	-10	-7	-9	-8	-4	-4	
	<b>AT</b>	-29	01-96	-10	6	09-00	-3	-6	-6	-10	-8	-6	-10	-4	-4	0	-1	2	2	
<b>PL</b>	-55	12-99	-24	-3	01-06	-8	-4	-7	-6	-5	-5	-5	-3	-4	-4	-3	-3	-3		
<b>PT</b>	-35	06-93	-16	-2	02-90	-25	-22	-22	-21	-24	-20	-19	-23	-21	-22	-24	-26	-26		
<b>SI</b>	-42	10-95	-23	-10	07-04	-18	-18	-18	-18	-17	-20	-24	-22	-21	-21	-18	-18	-18		
<b>SK</b>	-56	06-99	-24	2	06-96	-14	-16	-18	-17	-15	-22	-20	-19	-18	-17	-22	-18	-18		
<b>FI</b>	-60	06-91	-16	15	12-00	-6	-6	-3	-13	-12	1	-5	2	-1	-8	0	-7	-7		
<b>SE</b>	-51	06-92	-20	23	12-94	-18	-17	-23	-18	-30	-29	-23	-29	-26	-26	-26	-16	-16		
<b>UK</b>	-50	03-91	-20	2	06-97	-12	-8	-12	-16	-21	-14	-16	-19	-15	-16	-16	-15	-15		
SELLING-PRICE EXPECTATIONS	<b>EU</b>	-13	01-99	5	26	02-95	10	6	2	0	-1	0	0	3	3	5	5	5		
	<b>Euro area</b>	-10	12-98	5	25	02-95	9	5	2	0	-1	1	1	4	3	6	6	5		
	<b>BE</b>	-18	02-96	2	26	12-94	4	2	0	-6	-9	-2	-4	-1	5	3	1	3		
	<b>CZ</b>	-6	12-98	20	71	03-95	10	11	5	2	-1	5	3	13	16	5	5	-1		
	<b>DK</b>	-12	11-01	-1	12	11-04	0	2	-2	-1	-3	-5	-2	-7	1	2	3	1		
	<b>DE</b>	-8	12-93	6	23	02-95	11	6	2	-2	-1	-1	3	1	5	3	4	4		
	<b>EE</b>	-28	03-99	16	86	04-92	19	12	14	16	14	14	20	23	14	21	19	19		
	<b>EL</b>	-4	01-99	17	41	10-90	10	9	7	8	5	7	6	6	7	7	7	8		
	<b>ES</b>	-18	04-93	3	35	04-95	7	7	-4	1	2	1	3	4	4	8	5	6		
	<b>FR</b>	-26	01-99	0	24	02-90	7	3	-1	0	-4	-4	-1	3	-2	5	9	-1		
	<b>IE</b>	-25	11-92	-3	29	11-03	2	-1	-8	12	-1	5	-4	1	5	-6	3	-4		
	<b>IT</b>	-10	12-98	11	40	03-95	11	7	9	7	4	7	9	9	11	10	12	13		
	<b>CY</b>	-9	10-01	6	38	10-03	-2	5	7	3	-2	2	4	10	-7	6	4	2		
	<b>LV</b>	-17	12-98	16	50	07-94	19	17	17	15	18	18	20	26	18	24	25	17		
	<b>LT</b>	-20	01-00	15	75	11-93	1	7	7	-3	4	6	1	11	14	6	6	7		
	<b>LU</b>	-50	08-91	-3	53	12-94	3	13	3	-3	-5	-11	-15	-11	-1	6	3	-2		
	<b>HU</b>	5	01-06	28	51	01-01	24	16	16	14	15	14	11	18	20	15	13	5		
	<b>MT</b>	-43	12-04	-6	34	12-03	-16	5	-29	29	1	-11	6	1	-8	-17	-31	:		
	<b>NL</b>	-7	01-99	4	20	12-94	1	1	-4	-1	-2	3	1	2	6	5	4	6		
	<b>AT</b>	-23	03-96	-1	17	03-90	2	-1	0	-3	-2	-5	1	3	1	3	2	3		
<b>PL</b>	-6	06-02	14	46	01-93	4	-5	-2	-4	-2	-4	0	-1	-5	2	-2	-2			
<b>PT</b>	-9	05-03	8	29	10-90	3	1	-2	-5	-4	6	7	10	3	3	-1	16			
<b>SI</b>	-24	04-99	-8	5	01-01	0	-3	-8	-10	-8	-7	-5	-6	-3	-4	-5	-2			
<b>SK</b>	-33	03-01	29	81	04-95	0	28	12	3	1	-3	8	-1	19	6	-2	12			
<b>FI</b>	-34	03-96	3	49	08-94	31	15	4	3	2	20	6	9	4	14	14	20			
<b>SE</b>	-20	11-96	5	37	12-94	13	1	2	-2	1	-3	-1	6	6	8	16	11			
<b>UK</b>	-30	01-99	0	29	02-95	16	15	5	-1	-1	-8	-6	-6	1	-1	0	5			

(a) The indicator is the arithmetic average of the balances (%) of the questions on production expectations, order-books and stocks (the last with inverted sign).

(b) Highest figure is considered as minimum, lowest figure is considered as maximum.

TABLE 2b: Quarterly survey of manufacturing industry

Capacity utilisation in manufacturing industry (%) (s.a.) <sup>(a)</sup>													
	Since 01/1990					2004			2005				2006
	Min.		Ave.	Max.		II	III	IV	I	II	III	IV	I
	Value	Date	Value	Date	Value								
<b>EU</b>	77.4	III-93	81.8	85.5	I-90	80.9	82.2	82.0	81.9	81.2	81.1	81.0	81.7
<b>Euro area</b>	77.0	III-93	82.0	85.7	II-90	81.0	82.0	82.1	81.9	81.1	80.9	81.1	81.7
<b>BE</b>	74.5	II-93	80.0	84.8	I-01	79.6	81.5	80.9	80.9	79.4	78.2	79.1	80.4
<b>CZ</b>	70.9	IV-91	81.9	87.1	I-01	85.6	86.3	86.7	87.0	86.0	84.9	86.6	86.2
<b>DK</b>	76.4	II-93	81.9	86.1	III-98	81.9	83.0	82.8	81.9	83.3	84.3	84.1	84.6
<b>DE</b>	78.3	III-93	84.1	89.5	I-91	82.6	83.4	83.9	83.9	81.9	82.7	82.9	84.2
<b>EE</b>	52.2	IV-93	66.2	79.4	I-06	75.5	74.3	74.8	75.7	77.5	77.6	78.0	79.4
<b>EL</b>	71.9	I-05	76.1	79.3	II-01	74.6	76.3	74.1	71.9	72.4	71.9	72.2	74.2
<b>ES</b>	71.1	III-93	78.2	81.0	III-98	79.7	79.8	79.3	80.1	80.1	80.6	80.1	80.7
<b>FR</b>	78.5	III-94	84.6	89.1	IV-00	83.2	84.3	84.6	84.0	84.6	82.5	81.8	82.2
<b>IE</b>	69.7	II-05	76.3	83.3	I-96	77.7	75.3	75.0	72.2	69.7	78.2	76.8	74.0
<b>IT</b>	71.6	III-93	76.4	80.2	I-90	75.8	76.9	76.7	76.4	76.4	75.9	76.7	76.8
<b>CY</b>	62.2	IV-02	71.0	76.0	IV-01	72.2	74.3	70.0	72.4	71.4	73.4	72.6	69.6
<b>LV</b>	44.6	II-93	60.3	75.0	III-05	72.7	72.7	69.1	70.1	71.7	75.0	71.1	73.1
<b>LT</b>	44.1	IV-95	56.2	72.2	I-06	68.4	69.1	68.7	69.8	70.5	70.1	72.1	72.2
<b>LU</b>	77.8	IV-96	83.6	89.2	I-01	85.6	87.4	86.0	84.9	83.2	79.8	81.4	82.8
<b>HU</b>	76.1	I-96	80.1	87.1	IV-00	80.3	82.2	80.0	80.5	82.2	83.7	82.0	84.0
<b>MT</b>	19.6	II-03	64.8	86.8	II-05	85.6	62.1	70.8	61.3	86.8	71.1	71.8	:
<b>NL</b>	80.3	III-93	83.6	86.2	II-90	82.8	83.1	82.7	82.3	82.0	81.7	82.1	81.5
<b>AT</b>	79.1	IV-02	81.9	85.0	III-00	80.4	82.3	82.4	82.2	81.8	81.3	81.3	81.9
<b>PL</b>	66.6	I-02	73.9	78.2	III-98	76.6	78.1	77.4	77.6	74.8	76.0	76.9	76.5
<b>PT</b>	72.6	IV-93	79.5	84.3	IV-03	79.3	81.4	80.2	81.6	79.2	79.9	79.2	78.7
<b>SI</b>	76.3	III-96	80.1	83.1	I-06	81.6	81.7	81.2	81.7	82.5	81.9	82.6	83.1
<b>SK</b>	65.3	IV-03	78.7	87.1	II-01	71.3	74.4	84.2	75.6	79.1	78.4	80.2	79.2
<b>FI</b>	80.7	III-03	85.3	89.9	III-98	83.4	84.7	86.9	85.5	87.5	82.4	84.3	85.2
<b>SE</b>	82.2	III-01	85.1	88.5	IV-00	85.2	86.9	87.1	86.7	87.3	85.9	84.4	85.7
<b>UK</b>	77.4	I-93	81.1	85.4	II-95	79.7	82.7	81.0	81.3	80.2	80.3	79.4	80.5

Production capacity in manufacturing industry <sup>(a)(b)(c)</sup>													
	Since 01/1990					2004			2005				2006
	Min.		Ave.	Max.		II	III	IV	I	II	III	IV	I
	Value	Date	Value	Date	Value								
<b>EU</b>	5	I-90	20	38	III-93	20	17	16	18	21	19	18	18
<b>Euro area</b>	2	I-90	18	38	II-93	19	17	16	17	20	19	17	17
<b>BE</b>	10	II-90	28	54	III-93	26	21	17	24	29	30	25	22
<b>CZ</b>	-7	II-00	7	28	III-99	7	2	0	2	7	6	3	3
<b>DK</b>	-5	I-98	16	33	II-93	16	6	9	10	16	11	5	2
<b>DE</b>	-6	IV-90	19	42	II-93	20	19	19	20	24	21	19	16
<b>EE</b>	-11	I-06	15	38	I-96	2	-6	3	-8	-5	2	-7	-11
<b>EL</b>	0	II-00	12	24	III-05	12	13	14	18	20	24	20	20
<b>ES</b>	-2	II-00	7	20	II-93	7	5	3	5	6	4	5	9
<b>FR</b>	-13	III-00	16	46	III-93	15	14	9	10	17	14	10	15
<b>IE</b>	-4	III-00	12	29	III-93	18	23	15	17	11	13	11	10
<b>IT</b>	12	I-90	25	36	I-93	28	23	26	29	28	28	29	28
<b>CY</b>	-12	II-02	5	25	II-05	10	10	21	10	25	-1	2	-5
<b>LV</b>	-6	III-03	17	53	III-93	0	-1	0	0	0	1	-1	2
<b>LT</b>	5	IV-02	27	68	IV-93	16	13	16	20	21	13	8	14
<b>LU</b>	-12	I-98	20	57	IV-96	25	3	-6	-4	6	11	7	13
<b>HU</b>	-41	IV-03	25	48	IV-05	17	15	42	23	38	33	48	20
<b>MT</b>	-9	III-03	14	30	III-04	12	30	24	29	25	27	20	:
<b>NL</b>	-3	I-01	5	16	III-93	7	2	2	4	2	5	9	8
<b>AT</b>	0	III-00	14	22	III-03	16	13	11	15	15	20	14	13
<b>PL</b>	14	II-05	32	56	III-92	31	23	17	16	14	17	16	16
<b>PT</b>	1	III-00	14	41	III-93	18	18	20	22	18	24	19	20
<b>SI</b>	8	I-06	21	41	III-96	11	9	10	13	14	15	11	8
<b>SK</b>	-12	III-04	6	27	I-94	0	-12	7	2	1	7	2	6
<b>FI</b>	-21	II-95	24	81	IV-91	29	20	7	11	15	13	16	17
<b>SE</b>	-19	III-00	7	30	IV-01	4	6	4	7	17	26	10	20
<b>UK</b>	10	II-95	32	55	III-91	32	25	27	27	32	23	28	30

TABLE 2b (continued): Quarterly survey of manufacturing industry

Estimated number of months' production assured by orders on hand in manufacturing industry (s.a.)<sup>(a)</sup>

	Since 01/1990					2004			2005				2006
	Min.		Ave.	Max.		II	III	IV	I	II	III	IV	I
	Value	Date	Value	Date									
<b>EU</b>	2.7	III-93	3.1	3.6	II-90	3.3	3.4	3.3	3.3	3.2	3.3	3.3	3.3
<b>Euro area</b>	2.6	III-93	3.1	3.6	II-90	3.1	3.2	3.1	3.1	3.0	3.1	3.1	3.2
<b>BE</b>	2.8	III-03	3.2	4.2	III-90	3.1	3.1	3.2	3.1	3.0	3.1	3.3	3.3
<b>CZ</b>	7.4	III-03	13.0	22.5	II-01	10.9	7.9	10.1	10.1	10.3	8.1	9.3	8.9
<b>DK</b>	1.4	III-00	1.9	2.5	III-90	1.4	1.6	1.4	1.5	1.5	1.6	1.6	1.7
<b>DE</b>	2.4	IV-93	2.8	3.3	III-90	2.6	2.7	2.6	2.6	2.6	2.6	2.6	2.5
<b>EE</b>	3.9	II-05	5.5	7.2	II-02	4.5	4.4	4.8	4.8	3.9	5.0	4.8	4.1
<b>EL</b>	4.2	IV-05	5.6	6.6	III-90	4.7	4.5	4.9	4.8	4.5	4.5	4.2	4.7
<b>ES</b>	1.5	II-93	2.6	4.2	I-05	3.2	3.5	3.4	4.2	3.8	4.1	3.9	3.9
<b>FR</b>	2.5	III-97	3.2	4.4	I-02	3.5	3.7	3.3	3.2	2.9	3.3	3.3	3.4
<b>IE</b>	1.6	IV-93	2.5	3.7	III-05	2.9	3.0	3.0	3.2	2.6	3.7	3.5	3.5
<b>IT</b>	2.1	III-96	3.6	4.7	II-90	3.3	3.5	3.4	3.1	3.3	3.3	3.4	3.7
<b>CY</b>	2.7	III-01	3.9	4.8	II-05	3.1	4.0	4.7	4.4	4.8	3.7	4.5	4.1
<b>LV</b>	3.0	II-03	3.5	4.6	IV-05	3.0	3.3	3.4	3.1	3.5	3.6	4.6	3.8
<b>LT</b>	2.1	III-01	2.8	3.4	IV-05	2.8	2.9	3.2	3.0	2.7	3.0	3.4	3.3
<b>LU</b>	1.9	IV-93	2.7	3.4	I-05	3.1	3.3	3.2	3.4	3.4	3.0	3.1	3.4
<b>HU</b>	2.9	III-02	4.1	5.1	IV-00	3.8	4.6	4.2	5.0	3.8	4.1	4.6	4.5
<b>MT</b>	3.0	II-04	3.5	4.0	II-03	3.0	3.5	3.7	3.4	3.4	3.5	3.7	:
<b>NL</b>	2.1	I-95	2.6	3.3	I-91	2.7	2.7	2.8	2.8	2.8	2.8	2.8	2.9
<b>AT</b>	2.9	I-01	3.8	5.9	IV-01	4.1	4.2	3.6	4.0	4.3	4.0	3.7	4.4
<b>PL</b>	5.3	III-01	6.3	7.8	I-05	7.4	6.8	7.0	7.8	7.6	7.3	7.2	7.2
<b>PT</b>	2.7	III-03	3.8	6.4	II-04	6.4	4.6	5.0	4.2	3.2	3.8	3.2	4.3
<b>SI</b>	2.8	IV-98	4.3	5.0	IV-00	4.4	4.1	4.1	3.9	3.9	4.0	4.2	4.3
<b>SK</b>	5.3	I-04	7.4	9.5	I-01	5.8	6.5	6.9	6.7	5.7	5.9	5.3	5.6
<b>FI</b>	2.5	II-05	3.3	4.3	III-98	2.7	2.5	3.1	3.7	2.5	3.1	3.1	3.5
<b>SE</b>	1.8	IV-96	2.4	3.3	II-04	3.3	2.9	3.0	2.8	3.1	3.1	2.9	2.9
<b>UK</b>	2.4	I-95	3.1	3.8	I-99	2.8	3.6	3.3	3.2	3.3	3.6	3.2	3.2

New orders in manufacturing industry (s.a.)<sup>(a)(c)</sup>

	Since 01/1990					2004			2005				2006
	Min.		Ave.	Max.		II	III	IV	I	II	III	IV	I
	Value	Date	Value	Date									
<b>EU</b>	-21	IV-92	1	20	I-95	15	12	8	6	-4	2	4	6
<b>Euro area</b>	-22	IV-92	1	18	I-95	14	13	7	7	-3	4	5	7
<b>BE</b>	-24	I-96	-4	20	IV-97	9	12	8	0	-18	-7	-2	-2
<b>CZ</b>	-11	IV-01	9	27	I-04	2	20	24	19	0	9	15	18
<b>DK</b>	-23	I-99	6	37	III-94	18	18	10	4	-3	14	15	19
<b>DE</b>	-31	I-02	0	22	II-04	22	16	5	6	-4	8	8	11
<b>EE</b>	-14	IV-01	14	39	I-06	28	29	22	21	29	30	36	39
<b>EL</b>	-5	II-03	11	23	IV-97	12	3	6	3	1	5	1	1
<b>ES</b>	-8	II-93	5	14	I-04	11	10	5	7	13	12	3	6
<b>FR</b>	-45	III-93	-1	32	II-00	11	14	11	17	0	3	4	5
<b>IE</b>	-18	IV-01	2	28	III-95	12	-1	-8	-14	-5	2	-16	1
<b>IT</b>	-34	IV-91	3	28	IV-94	2	5	8	2	-5	-6	2	6
<b>CY</b>	-42	II-03	-16	-5	II-04	-5	-18	-17	-20	-9	-9	-12	-17
<b>LV</b>	7	IV-01	14	23	I-06	20	10	15	13	12	18	19	23
<b>LT</b>	-10	II-02	8	22	II-04	22	12	17	-4	3	13	15	16
<b>LU</b>	-48	I-93	-7	32	I-00	21	19	3	-8	-23	-16	-7	2
<b>HU</b>	-21	II-05	-2	23	III-00	5	-3	-10	-10	-21	-11	-2	4
<b>MT</b>	-7	I-04	6	30	IV-05	1	3	-3	4	5	4	30	:
<b>NL</b>	-12	II-03	7	19	IV-99	9	12	3	4	3	7	16	5
<b>AT</b>	-30	II-96	2	28	II-00	13	12	17	10	0	4	9	16
<b>PL</b>	-17	III-02	14	45	I-98	29	22	13	16	-6	6	9	10
<b>PT</b>	-37	III-93	-7	23	IV-94	-15	3	-2	-6	-17	-22	-11	-16
<b>SI</b>	-10	IV-01	6	17	IV-04	16	11	17	8	6	9	9	15
<b>SK</b>	4	III-05	31	52	II-00	31	19	38	7	28	4	24	10
<b>FI</b>	-30	III-01	9	49	I-00	28	24	35	18	-7	-4	2	14
<b>SE</b>	-38	I-91	4	48	II-00	31	27	18	14	1	-7	24	24
<b>UK</b>	-46	II-91	-6	29	I-95	13	3	10	-7	-19	-6	-12	-14

TABLE 2b (continued): Quarterly survey of manufacturing industry

Export volume expectations in manufacturing industry (s.a.)<sup>(a) (c)</sup>

	Since 01/1990					2004			2005				2006
	Min.		Ave.	Max.		II	III	IV	I	II	III	IV	I
	Value	Date		Value	Date								
<b>EU</b>	-10	IV-01	7	21	I-95	14	12	14	10	7	8	10	14
<b>Euro area</b>	-11	II-93	7	20	I-95	15	13	15	9	8	8	10	15
<b>BE</b>	-26	I-96	-2	35	IV-97	12	14	12	-1	-20	-9	-3	3
<b>CZ</b>	0	IV-01	30	54	IV-97	15	28	39	21	17	29	40	28
<b>DK</b>	-2	IV-98	12	24	I-98	15	19	15	15	7	9	10	7
<b>DE</b>	-16	IV-92	5	20	I-06	16	14	17	12	14	13	15	20
<b>EE</b>	2	IV-01	18	38	III-00	15	12	19	25	24	15	21	26
<b>EL</b>	6	III-03	22	41	IV-97	25	17	18	14	13	16	17	27
<b>ES</b>	-8	II-93	4	12	III-97	8	7	5	3	10	4	9	8
<b>FR</b>	-34	III-93	5	29	I-95	20	15	21	11	-1	-1	10	13
<b>IE</b>	-33	IV-01	4	48	II-04	48	-13	12	-12	-18	7	-29	-5
<b>IT</b>	-3	II-92	13	27	IV-94	14	14	11	7	9	8	6	15
<b>CY</b>	-10	IV-04	19	40	IV-02	4	1	-10	17	30	17	14	25
<b>LV</b>	-2	IV-98	15	24	IV-00	15	11	18	16	18	18	18	13
<b>LT</b>	-11	II-94	13	36	III-97	28	18	21	13	20	30	23	17
<b>LU</b>	-58	III-91	-7	42	II-00	18	8	0	-8	-19	-10	8	-3
<b>HU</b>	-3	IV-01	11	32	IV-00	16	12	11	5	4	-2	8	12
<b>MT</b>	3	II-05	14	26	IV-05	16	24	16	7	3	13	26	:
<b>NL</b>	-11	III-03	8	22	III-00	12	7	7	4	5	4	5	10
<b>AT</b>	-8	IV-01	6	15	IV-03	8	8	10	11	13	8	9	12
<b>PL</b>	0	IV-01	15	25	III-04	22	25	22	10	17	16	16	15
<b>PT</b>	-24	III-93	6	30	IV-94	-12	-1	-3	-5	-7	-8	-3	-2
<b>SI</b>	3	IV-95	23	40	IV-04	27	30	40	28	28	21	29	25
<b>SK</b>	-15	I-04	35	75	I-96	49	0	35	22	40	13	17	15
<b>FI</b>	-21	I-03	17	53	III-05	10	42	23	24	13	53	23	30
<b>SE</b>	-21	IV-01	20	49	I-04	27	32	38	32	11	13	18	34
<b>UK</b>	-34	IV-01	1	30	III-95	2	-4	-3	2	-2	-3	2	-1

(a) Data collected in January, April, July and October each year.

(b) Answers to the questions whether, taking into account the level of order-books or production, capacity is more than sufficient (+), sufficient (=) or less than sufficient (-). Thus, negative balances (capacity less than sufficient) indicate high levels of capacity utilisation, whereas positive balances (capacity more than sufficient) are associated with low levels of capacity utilisation.

(c) Balances: i.e., differences between the percentages of respondents giving positive and negative replies.

TABLE 2c: **Capacity utilisation by industrial branch** <sup>(a)</sup> (s.a.)  
Degree of capacity utilisation in %

		Since 01/1990						2004			2005				2006
		Min.		Ave.	Max.		II	III	IV	I	II	III	IV	I	
		Value	Date	Value	Date	Value									Date
CONSUMER GOODS <sup>(b)</sup>	EU	78.0	III-02	80.5	85.9	II-90	79.2	79	78.9	78.3	79.0	79.1	78.1	78.7	
	Euro area	77.3	I-05	80.2	85.4	II-90	78.6	78.2	78.3	77.3	78.3	78.3	77.6	78	
INVESTMENT GOODS <sup>(b)</sup>	EU	75.7	IV-93	83.1	87	IV-00	83	84.4	84	83.7	83.8	82.9	82.9	83.3	
	Euro area	75.7	IV-93	83.8	88.1	IV-00	83.2	84.4	84.1	84.5	84.2	83.2	83.1	83.9	
INTERMEDIATE GOODS <sup>(b)</sup>	EU	77.2	III-93	82	85.9	I-90	81.2	82	82.6	82.6	80.4	80.7	81.8	82.3	
	Euro area	76.8	IV-93	82.2	86.4	I-90	81.1	81.7	82.7	82.4	80.3	80.8	81.9	82.3	
FOOD AND BEVERAGES	EU	76.5	IV-04	79.2	82.5	II-91	77.9	78.9	76.5	78.2	77.7	78.5	76.7	76.7	
	Euro area	76.3	I-06	78.3	81.8	II-91	78	77.6	76.8	77.5	77.3	77.3	76.8	76.3	
TEXTILES	EU	75.3	III-05	79.6	84.3	I-90	76.1	77	76.4	76.5	76.6	75.3	76.4	76	
	Euro area	75.0	III-05	79.4	84.7	I-90	75.5	76.4	76.2	76.6	76.7	75	75.6	75.5	
WOOD AND WOOD PRODUCTS	EU	76.3	II-92	81.3	84.5	II-95	80.2	81.7	81.7	81.8	80.6	80.6	82.8	82.7	
	Euro area	76.3	II-92	81.2	84.8	IV-90	79.3	80.6	81.2	81.0	79.6	79.9	81.8	81.8	
PRINTING AND PUBLISHING	EU	77.0	III-03	81.1	85.6	III-90	80.8	80.5	80.9	81.2	80.9	81	79.9	82.2	
	Euro area	77.2	III-03	81.3	86.1	III-90	81.2	80.1	80.4	81.4	79.8	80.2	79.7	82.3	
NON-METALLIC MINERAL PRODUCTS	EU	76.1	IV-93	80.4	84.2	II-90	80.1	81.5	81.6	81.2	79.1	81.2	81.7	83.1	
	Euro area	76.0	IV-93	80.6	85.2	II-90	79.1	81.2	81.3	80.2	79.1	81.4	82	82.2	
BASIC METALS	EU	73.0	III-93	82.9	89.3	IV-97	84.9	86.1	87.5	87.5	84.0	81.7	83.4	84.1	
	Euro area	72.8	I-93	83.1	89.2	IV-97	84.8	86.3	88.3	87.0	83.8	81.6	83.6	84.5	
METAL PRODUCTS	EU	73.9	IV-93	80	85.4	I-90	78.3	80.2	80.4	80.1	79.2	79.2	78.9	80.3	
	Euro area	73.0	IV-93	79.7	85.3	I-90	78.4	80.3	80.3	79.7	78.9	78.5	78.9	80.5	
MACHINERY AND EQUIPMENT	EU	76.4	IV-93	82.6	88.7	II-90	81.7	83.2	83.1	83.9	83.9	83.7	83.4	83.8	
	Euro area	75.3	IV-93	83.1	89.4	II-90	82.3	83.2	83.4	85.0	84.1	84.6	84	84.6	
MEDICAL AND OPTICAL INSTRUMENTS	EU	79.1	I-94	83.5	88	I-01	83.6	83.8	84	83.5	83.9	83.7	84.1	84.7	
	Euro area	79.5	I-93	84	89.3	I-01	83.2	84.4	84	84.7	85.1	84.5	85.3	85.8	
MOTOR VEH., TRAILERS AND SEMI-TRAILERS	EU	74.0	III-93	86.1	90.8	II-90	85.9	88.1	87.1	86.7	85.8	83.7	84.4	84.7	
	Euro area	74.8	III-93	87.3	92.6	I-01	85.7	87.4	86.8	87.3	86.6	84.1	85	84.4	

(a) Data collected in January, April, July and October each year.

(b) The three major groups do not cover all industrial sectors.

TABLE 2c: **Export volume expectations by industrial branch** <sup>(a)</sup> (s.a.)

Balances: i.e., differences between the percentages of respondents giving positive and negative replies

		Since 01/1990						2004			2005				2006
		Min.		Ave.	Max.		II	III	IV	I	II	III	IV	I	
		Value	Date	Value	Date	Value									Date
CONSUMER GOODS <sup>(b)</sup>	EU	-7	I-02	6.7	17.4	IV-00	16	6	10	11	8	10	8	13	
	Euro area	-7	III-93	7.7	18.9	IV-00	16	6	12	9	6	13	11	16	
INVESTMENT GOODS <sup>(b)</sup>	EU	-19	IV-92	5.7	21.5	I-95	20	16	20	9	8	7	9	17	
	Euro area	-23	IV-92	6.5	23.7	IV-04	21	21	24	10	11	6	7	18	
INTERMEDIATE GOODS <sup>(b)</sup>	EU	-14	IV-01	5.4	26.3	IV-94	13	12	11	8	5	6	9	9	
	Euro area	-13	IV-01	5.5	25.2	IV-94	16	13	9	7	5	8	10	9	
FOOD AND BEVERAGES	EU	-2	I-02	8.5	20.7	III-94	14	5	4	10	7	9	9	9	
	Euro area	-4	IV-92	8.7	19.4	I-95	15	4	7	10	6	9	11	13	
TEXTILES	EU	-16	IV-01	1.6	16.7	III-94	3	0	4	5	-4	-2	-5	5	
	Euro area	-17	II-93	2.9	17.9	III-97	3	-3	7	5	-5	-1	-3	5	
WOOD AND WOOD PRODUCTS	EU	-11	IV-90	4.7	21.1	IV-94	17	10	0	0	1	15	14	15	
	Euro area	-10	II-03	2.9	17.9	II-94	14	12	5	-1	0	13	13	16	
PRINTING AND PUBLISHING	EU	-10	III-94	0.6	15.8	I-95	9	4	4	5	-5	3	-4	-1	
	Euro area	-13	IV-93	2.5	19.4	I-91	6	7	9	1	1	11	-3	1	
NON-METALLIC MINERAL PRODUCTS	EU	-14	IV-01	4.1	19.7	I-95	10	4	7	-1	6	0	5	0	
	Euro area	-10	II-93	4.5	18.7	I-95	8	2	4	4	9	3	6	-1	
BASIC METALS	EU	-25	IV-01	2	26.7	III-94	13	10	18	3	-6	-7	9	14	
	Euro area	-25	IV-01	0.7	25.8	IV-94	12	9	14	-1	-6	-4	8	13	
METAL PRODUCTS	EU	-15	IV-01	2.8	19.9	I-95	11	5	12	11	8	4	10	15	
	Euro area	-14	II-93	2.7	18	I-95	9	3	12	13	8	5	9	14	
MACHINERY AND EQUIPMENT	EU	-16	IV-01	5.3	25.2	I-95	15	19	23	12	10	12	11	18	
	Euro area	-15	II-93	5.5	25.5	IV-94	14	17	20	14	11	11	11	20	
MEDICAL AND OPTICAL INSTRUMENTS	EU	-16	IV-01	11.8	26.4	III-95	17	16	23	22	25	20	13	17	
	Euro area	-20	II-93	10.5	27	IV-97	13	17	25	21	27	26	9	19	
MOTOR VEH., TRAILERS AND SEMI-TRAILERS	EU	-33	III-93	4.9	28.1	II-98	23	18	16	-4	-2	-2	1	11	
	Euro area	-38	III-93	5.9	35.5	II-98	30	31	28	0	6	-5	4	15	

(a) Data collected in January, April, July and October each year.

(b) The three major groups do not cover all industrial sectors.

TABLE 3: Monthly survey of services (s.a.)<sup>(a)</sup>

		Since 01/1990						2005										2006	
		Min.		Ave.		Max.		Feb.	Mar.	Apr.	May	June	July	Aug.	Sep.	Oct.	Nov.	Dec.	Jan.
		Value	Date	Value	Date	Value	Date												
SERVICES CONFIDENCE INDICATOR	<b>EU</b>	-6	03-03	17	32	08-98	13	10	8	10	9	11	11	11	13	15	12	15	
	<b>Euro area</b>	-5	11-01	18	34	08-98	10	9	8	10	9	12	10	11	14	14	13	15	
	<b>BE</b>	-7	03-03	13	33	03-98	14	11	12	3	9	6	5	14	14	11	14	28	
	<b>CZ</b>	32	06-05	40	47	07-02	39	38	37	37	32	32	37	40	38	34	41	43	
	<b>DK</b>	11	10-01	26	37	04-04	33	34	33	34	32	29	31	33	31	33	35	34	
	<b>DE</b>	-18	12-02	25	52	03-99	6	5	3	9	8	11	10	10	11	10	12	18	
	<b>EE</b>	5	11-04	24	40	01-06	17	20	23	23	27	31	23	26	25	31	34	40	
	<b>EL</b>	-14	04-03	26	62	08-00	18	23	22	16	11	10	12	13	21	20	14	13	
	<b>ES</b>	10	10-04	30	56	06-98	12	14	17	27	25	21	23	19	20	22	23	18	
	<b>FR</b>	-22	06-93	3	25	06-90	9	8	6	7	10	11	10	10	11	10	7	8	
	<b>IE</b>	-14	05-03	16	44	08-98	-9	-4	9	-2	-12	7	-6	-2	10	16	19	18	
	<b>IT</b>	-5	11-01	17	44	02-98	13	16	12	10	-1	11	0	14	23	28	19	19	
	<b>CY</b>	-21	09-02	5	19	06-05	13	18	15	7	19	15	10	4	3	14	3	6	
	<b>LV</b>	7	03-02	11	17	01-06	12	14	13	12	13	15	13	14	13	16	14	17	
	<b>LT</b>	9	04-05	18	33	11-05	12	12	9	16	16	25	17	23	28	33	27	32	
	<b>HU</b>	-10	10-04	1	14	03-02	-1	-5	-8	-4	-8	-4	-1	0	2	2	-7	4	
	<b>NL</b>	3	06-03	16	35	12-97	11	7	10	6	9	6	4	6	9	8	8	5	
	<b>AT</b>	0	01-02	15	30	03-98	12	9	12	10	7	10	9	8	8	12	12	16	
	<b>PL<sup>(n)</sup></b>	-7	01-03	2	11	01-06	10	7	7	6	4	8	7	7	8	10	10	11	
	<b>PT</b>	-17	05-03	7	29	06-01	5	-3	-3	1	-4	-9	2	-1	-3	-3	4	-5	
	<b>SI</b>	12	05-05	23	32	10-02	21	14	12	12	15	19	18	18	14	17	15	16	
<b>SK</b>	27	09-05	46	60	06-03	38	33	37	33	33	40	31	27	28	30	41	47		
<b>FI</b>	-12	09-03	26	61	09-00	33	32	25	34	38	41	41	40	37	35	38	31		
<b>SE</b>	-24	01-03	17	46	12-00	30	32	31	27	32	32	26	34	37	42	33	37		
<b>UK</b>	-20	12-02	14	37	10-97	24	3	-1	1	-1	3	10	3	3	13	-2	4		
ASSESSMENT OF BUSINESS SITUATION	<b>EU</b>	-19	03-03	13	37	06-00	8	2	-1	1	-1	4	4	8	8	10	7	11	
	<b>Euro area</b>	-18	03-03	15	39	09-00	6	3	0	2	-1	5	3	8	10	11	9	12	
	<b>BE</b>	-27	12-01	-3	30	01-06	-5	-2	-6	-16	-9	-10	-7	3	0	-6	-2	30	
	<b>CZ</b>	48	06-05	59	72	07-02	60	58	58	60	48	48	57	60	55	51	55	53	
	<b>DK</b>	4	05-03	23	41	04-00	27	28	29	31	30	25	25	31	26	27	30	30	
	<b>DE</b>	-35	01-03	26	63	12-98	5	6	-1	6	4	11	10	10	9	11	11	19	
	<b>EE</b>	1	11-04	27	48	11-02	19	24	27	29	30	35	31	34	27	32	28	41	
	<b>EL</b>	-42	04-03	11	58	09-00	22	28	26	17	9	8	10	13	18	19	17	17	
	<b>ES</b>	4	10-04	30	67	04-00	6	5	8	21	19	17	21	16	13	14	17	16	
	<b>FR</b>	-35	09-96	-1	29	06-00	9	5	2	4	6	9	9	8	13	10	10	8	
	<b>IE</b>	-20	06-05	19	52	11-99	-10	-7	4	-2	-20	15	-10	5	12	17	15	22	
	<b>IT</b>	-39	06-05	11	44	02-01	0	-15	-18	-29	-39	-22	-35	-1	-1	13	-6	-6	
	<b>CY</b>	-33	09-02	-3	16	04-04	5	10	5	5	10	7	5	-2	1	12	4	2	
	<b>LV</b>	4	10-04	11	18	04-03	8	12	9	9	11	9	12	6	12	10	11	16	
	<b>LT</b>	2	04-05	22	48	03-03	7	5	2	13	12	27	9	24	20	25	29	24	
	<b>HU</b>	-15	10-04	-1	19	05-02	-6	-7	-13	-8	-11	-10	-5	-6	0	-4	-12	0	
	<b>NL</b>	-26	07-93	13	70	12-00	19	13	13	19	17	15	14	16	27	23	22	22	
	<b>AT</b>	-4	10-96	12	30	03-98	7	6	8	6	2	7	5	0	2	7	8	10	
	<b>PL<sup>(n)</sup></b>	-7	02-04	4	11	01-06	10	5	5	4	1	4	2	3	4	6	7	11	
	<b>PT</b>	-22	06-03	4	24	11-97	-5	-7	-10	-9	-14	-17	-7	-6	-9	-9	-10	-10	
	<b>SI</b>	1	12-05	24	44	10-02	20	17	4	5	10	14	10	10	8	3	1	6	
<b>SK</b>	13	10-05	42	66	01-03	30	28	34	29	25	36	18	15	13	21	30	45		
<b>FI</b>	-47	03-03	18	79	05-98	27	27	24	8	13	22	25	19	24	0	10	18		
<b>SE</b>	-60	01-02	8	47	01-06	37	36	27	31	30	37	27	26	36	43	41	47		
<b>UK</b>	-35	12-02	-1	27	12-97	9	-21	-17	-15	-18	-15	1	-4	-8	-7	-15	-7		
EVOLUTION OF DEMAND IN RECENT MONTHS	<b>EU</b>	-9	02-02	15	32	03-98	10	9	7	14	9	11	11	10	12	15	12	16	
	<b>Euro area</b>	-12	02-02	15	32	03-98	5	7	6	13	9	11	10	10	13	13	13	16	
	<b>BE</b>	-9	03-03	13	41	11-97	15	12	12	8	17	13	5	12	18	7	12	34	
	<b>CZ</b>	15	08-02	28	39	08-04	28	28	25	23	24	21	25	34	31	25	27	33	
	<b>DK</b>	9	04-03	26	42	12-04	36	38	38	37	37	32	33	36	36	39	39	37	
	<b>DE</b>	-25	01-03	20	43	09-98	3	4	4	12	9	10	12	10	11	9	14	20	
	<b>EE</b>	3	11-04	24	51	01-06	16	21	21	22	24	29	24	33	31	36	39	51	
	<b>EL</b>	-9	04-03	32	71	06-01	17	26	26	17	12	10	10	11	28	22	11	10	
	<b>ES</b>	-1	08-02	24	56	06-98	5	5	11	24	19	16	19	13	16	17	23	14	
	<b>FR</b>	-33	03-97	5	37	01-90	6	6	6	7	11	12	10	9	10	8	4	8	
	<b>IE</b>	-24	10-03	9	46	08-98	-15	-10	3	-4	-24	-2	-14	-15	4	9	17	15	
	<b>IT</b>	-28	08-02	13	39	11-05	6	16	12	32	11	23	12	19	33	39	33	34	
	<b>CY</b>	-34	08-02	0	21	04-04	14	9	9	3	20	15	8	-5	-4	18	2	1	
	<b>LV</b>	-4	02-02	9	19	11-05	15	14	13	10	13	15	13	11	11	19	14	17	
	<b>LT</b>	0	08-02	19	47	01-06	24	16	7	17	18	29	22	25	35	44	32	47	
	<b>HU</b>	-14	04-05	-2	13	03-02	-3	-9	-14	-5	-8	-6	-1	1	1	-1	-5	6	
	<b>NL</b>	-49	03-01	6	50	06-98	-14	2	-14	-24	-21	-18	-22	-21	-25	-23	-29	-28	
	<b>AT</b>	-16	01-02	15	35	03-98	15	11	11	9	6	11	10	9	6	14	16	19	
	<b>PL<sup>(n)</sup></b>	-19	01-03	-2	10	12-05	6	4	2	3	2	5	3	4	8	8	10	8	
	<b>PT</b>	-34	05-03	3	26	06-01	6	-5	-9	-2	-9	-9	5	-7	-6	-1	1	-11	
	<b>SI</b>	-1	03-05	18	29	08-04	21	-1	3	3	8	15	18	17	11	17	16	17	
<b>SK</b>	27	09-05	45	67	07-03	40	35	36	29	29	40	32	27	28	30	42	43		
<b>FI</b>	-20	09-03	28	83	04-01	36	34	32	43	53	32	54	48	47	47	47	35		
<b>SE</b>	-19	10-01	18	53	01-01	36	33	32	29	33	34	26	42	43	47	32	33		
<b>UK</b>	-19	07-03	15	43	01-97	31	7	0	12	-1	4	13	4	-1	19	-2	5		

TABLE 3: (continued) **Monthly survey of services (s.a.)<sup>(a)</sup>**

		Since 01/1990						2005												2006
		Min.		Ave.		Max.		Feb.	Mar.	Apr.	May	June	July	Aug.	Sep.	Oct.	Nov.	Dec.	Jan.	
		Value	Date	Value	Date	Value	Date													
EVOLUTION OF DEMAND EXPECTED IN THE MONTHS AHEAD	<b>EU</b>	1	11-01	24	37	06-98	20	18	18	15	18	19	16	15	19	20	17	17		
	<b>Euro area</b>	-3	11-01	23	38	05-00	18	17	17	16	18	19	15	15	19	18	18	17		
	<b>BE</b>	-2	07-03	28	51	01-95	33	24	30	16	20	16	18	26	23	32	32	20		
	<b>CZ</b>	24	01-04	32	44	01-03	29	27	27	28	25	27	28	27	27	27	41	41		
	<b>DK</b>	16	09-01	30	41	12-04	35	35	33	34	30	30	36	33	30	32	35	36		
	<b>DE</b>	-16	11-01	29	59	09-00	11	6	6	9	9	14	9	8	13	11	11	14		
Component of the services confidence indicator	<b>EE</b>	7	06-04	20	34	12-05	16	16	20	20	29	29	13	12	17	24	34	27		
	<b>EL</b>	5	05-03	36	75	09-01	14	13	15	14	13	14	15	14	16	20	15	11		
	<b>ES</b>	19	10-04	38	59	06-98	25	31	31	37	38	30	29	28	30	34	30	22		
	<b>FR</b>	-18	09-93	5	32	03-01	11	13	9	10	12	13	12	12	10	11	7	9		
	<b>IE</b>	-7	05-03	19	45	06-98	-2	6	19	-1	7	6	6	4	13	21	25	17		
	<b>IT</b>	-6	09-00	25	57	06-01	32	47	40	28	26	32	23	22	36	31	30	28		
	<b>CY</b>	3	06-03	17	34	03-05	20	34	30	14	29	22	17	18	13	12	3	15		
	<b>LV</b>	8	01-03	14	25	02-02	13	17	17	18	16	21	14	24	17	19	17	17		
	<b>LT</b>	-7	10-02	14	31	11-05	7	16	17	18	19	18	21	20	29	31	19	23		
	<b>HU</b>	-5	12-05	5	17	02-02	7	0	4	3	-3	5	2	5	6	9	-5	6		
	<b>NL</b>	-4	01-96	26	54	07-00	28	6	30	22	30	22	19	23	25	25	31	22		
	<b>AT</b>	-1	10-01	18	34	06-98	12	10	17	14	12	12	12	14	15	16	11	17		
	<b>PL<sup>(n)</sup></b>	-11	03-03	4	16	07-05	12	12	13	12	10	16	15	13	12	14	14	13		
	<b>PT</b>	-16	09-03	14	40	06-01	12	4	11	14	13	0	7	12	5	1	19	5		
	<b>SI</b>	22	04-03	27	32	12-04	23	25	30	28	27	28	27	25	22	29	29	25		
	<b>SK</b>	35	03-05	51	65	06-03	45	35	40	41	46	43	42	38	43	38	51	54		
	<b>FI</b>	-12	10-96	32	71	01-01	36	35	20	51	48	70	45	53	39	57	57	41		
	<b>SE</b>	-4	01-03	24	66	02-01	18	27	34	20	32	26	25	34	31	37	25	30		
	<b>UK</b>	-14	03-03	28	57	10-97	30	23	14	5	17	18	15	9	18	28	11	14		
	EVOLUTION OF EMPLOYMENT IN RECENT MONTHS	<b>EU</b>	-9	03-03	10	26	08-98	4	1	2	3	1	3	5	3	1	2	8	6	
<b>Euro area</b>		-7	03-03	11	28	01-99	1	2	1	1	1	2	3	2	-1	4	7	6		
	<b>BE</b>	-14	08-02	8	30	08-98	0	1	5	-4	5	8	8	1	14	3	14	14		
	<b>CZ</b>	-30	11-04	-11	18	11-02	-27	-20	-8	-20	-21	-16	-10	-3	-13	-17	-18	-12		
	<b>DK</b>	-2	04-03	10	21	04-00	13	12	15	15	16	18	19	19	18	21	18	21		
	<b>DE</b>	-20	12-02	15	44	03-99	-1	-1	0	-1	0	3	0	2	-3	-3	4	8		
	<b>EE</b>	1	06-02	9	16	09-05	16	5	11	13	11	11	14	16	11	11	11	12		
	<b>EL</b>	-42	06-01	7	45	06-00	-8	-11	-3	-4	0	1	4	8	-1	-2	-2	-6		
	<b>ES</b>	4	03-03	18	45	08-98	11	13	12	12	13	10	13	10	8	12	13	10		
	<b>FR</b>	-27	06-93	4	23	12-90	-1	2	0	0	1	4	4	4	-6	3	4	4		
	<b>IE</b>	-36	05-05	1	25	02-98	-13	-14	-13	-36	-21	-11	-20	-10	5	3	0	5		
	<b>IT</b>	-13	05-03	6	25	05-00	5	1	-1	2	-9	-6	0	-7	-2	13	16	6		
	<b>CY</b>	-23	06-02	-4	6	02-05	6	5	5	0	4	3	2	0	-1	-1	-3	1		
	<b>LV</b>	-1	05-02	5	12	01-06	4	9	6	5	4	6	6	5	6	7	10	12		
	<b>LT</b>	-30	11-03	-9	19	01-06	5	-8	-9	2	-4	-4	-3	-1	9	3	5	19		
	<b>HU</b>	-17	12-05	-6	2	07-04	-2	-11	-10	-9	-15	-7	-1	-4	-12	-16	-17	-12		
	<b>NL</b>	-8	05-03	17	66	06-98	-1	-1	4	4	5	6	5	5	9	10	8			
	<b>AT</b>	-7	08-02	5	18	07-98	8	5	8	3	2	3	0	2	2	2	4	3		
	<b>PL<sup>(n)</sup></b>	-14	02-04	-6	3	02-05	3	-3	0	-2	-2	1	1	-1	-2	-1	0	-1		
	<b>PT</b>	-34	05-03	-2	28	07-98	-18	-15	-15	-5	-5	-20	-15	-11	-11	-11	-10	-15		
	<b>SI</b>	-10	12-03	5	16	08-05	7	6	10	8	7	16	16	16	13	13	7	7		
	<b>SK</b>	-66	12-04	-39	3	07-02	-51	-44	-55	-48	-42	-41	-49	-56	-51	-32	-38	-34		
	<b>FI</b>	-26	04-97	29	91	11-97	25	22	-4	14	15	7	24	26	23	23	16	11		
	<b>SE</b>	-40	04-03	4	42	01-01	-2	4	8	2	14	16	13	16	13	20	16	20		
	<b>UK</b>	-22	04-03	9	27	05-00	18	0	4	11	4	3	16	9	5	-8	10	3		
EVOLUTION OF EMPLOYMENT EXPECTED IN THE MONTHS AHEAD	<b>EU</b>	-5	04-03	10	26	06-98	5	5	5	4	4	6	6	4	7	5	9	6		
	<b>Euro area</b>	-4	05-03	9	26	04-00	2	3	4	1	1	4	4	4	6	4	8	6		
	<b>BE</b>	-11	04-03	16	34	12-05	17	15	24	9	11	13	19	24	13	23	34	15		
	<b>CZ</b>	-31	06-04	-20	-3	08-02	-14	-17	-20	-17	-22	-21	-17	-14	-14	-20	-16	-25		
	<b>DK</b>	4	02-03	12	23	01-06	17	14	18	13	11	14	19	21	18	22	20	23		
	<b>DE</b>	-12	05-03	-1	16	06-01	0	1	-4	-3	-1	2	-2	0	3	-1	3	7		
	<b>EE</b>	7	03-03	16	26	03-05	19	26	24	20	18	19	22	17	19	8	16	16		
	<b>EL</b>	-33	12-00	10	47	05-99	-14	-18	-5	-3	-3	-1	1	3	11	8	6	-4		
	<b>ES</b>	3	05-01	18	41	04-00	8	11	15	14	16	13	15	12	13	12	13	10		
	<b>FR</b>	-31	06-97	1	21	06-98	0	5	6	1	4	6	3	5	7	1	2	-1		
	<b>IE</b>	-13	11-04	8	31	04-98	-8	3	-10	-5	0	7	4	5	6	5	0	6		
	<b>IT</b>	-10	06-05	11	34	06-00	-2	0	5	-2	-10	-3	10	1	1	6	17	9		
	<b>CY</b>	-7	07-05	3	18	05-02	3	1	2	-5	-5	-7	-2	-1	-1	2	4	3		
	<b>LV</b>	-1	05-02	8	15	12-05	10	11	12	13	13	12	9	14	10	13	15	10		
	<b>LT</b>	-51	05-02	-5	25	10-04	16	7	3	4	-3	17	19	-8	2	17	13	10		
	<b>HU</b>	-9	09-03	-2	5	05-04	1	-2	-5	-4	-8	-3	1	-2	-4	-3	-3	-5		
	<b>NL</b>	-4	03-05	18	40	01-99	9	-4	10	7	9	9	10	9	9	12	16	10		
	<b>AT</b>	-6	01-04	8	27	09-98	5	3	7	5	3	6	5	2	5	6	3	7		
	<b>PL<sup>(n)</sup></b>	-12	08-03	-6	1	12-05	-1	-6	-1	-5	-4	-2	-1	-1	-2	-2	1	0		
	<b>PT</b>	-32	08-05	2	37	08-03	-7	-6	-8	-16	-21	-15	-32	-17	-7	-9	-3	-13		
	<b>SI</b>	-9	08-03	9	24	09-05	19	18	21	20	18	23	19	24	15	12	10	8		
	<b>SK</b>	-67	12-04	-44	-16	05-02	-46	-44	-53	-43	-48	-47	-38	-36	-33	-30	-35	-47		
	<b>FI</b>	-31	11-96	23	82	07-00	24	11	3	3	16	5	18	17	8	13	24	7		
	<b>SE</b>	-35	11-01	11	62	09-00	2	11	11	11	22	12	12	21	13	19	16	10		
	<b>UK</b>	-17	12-02	17	33	06-98	20	13	15	20	16	15	12	3	15	3	14	9		

(a) The indicator is the arithmetic average of the balances (%) for the questions on business situation and recent and expected evolution of demand.



TABLE 4a: Consumer opinion on economic and financial conditions (s.a.) <sup>(a)(b)</sup>

		Since 01/1990						2005												2006
		Min.		Ave.		Max.		Feb.	Mar.	Apr.	May	June	July	Aug.	Sep.	Oct.	Nov.	Dec.	Jan.	
		Value	Date	Value	Date	Value	Date													
CONSUMER CONFIDENCE INDICATOR	<b>EU</b>	-27	03-93	-11	2	12-00	-10	-10	-11	-12	-13	-12	-12	-12	-11	-11	-9	-9		
	<b>Euro area</b>	-29	07-93	-12	2	05-00	-13	-14	-13	-15	-15	-15	-15	-14	-13	-13	-11	-11		
	<b>BE</b>	-27	08-93	-6	17	12-00	-3	-1	-4	-11	-11	-11	-10	-14	-6	-9	-6	-4		
	<b>CZ</b>	-36	03-98	-15	2	11-05	-5	-2	-6	-3	-2	-2	-4	0	-1	2	-1	:		
	<b>DK</b>	-11	10-90	7	18	01-06	16	17	14	14	14	13	13	15	16	17	18	18		
	<b>DE</b>	-28	10-93	-11	6	05-00	-15	-18	-15	-14	-15	-17	-15	-14	-11	-12	-8	-6		
	<b>EE</b>	-56	04-93	-23	9	01-06	-10	-5	-8	-8	-6	-2	-4	-10	1	3	7	9		
	<b>EL</b>	-44	07-03	-30	-6	04-00	-32	-33	-35	-31	-36	-32	-33	-35	-37	-36	-36	-31		
	<b>ES</b>	-37	10-92	-11	6	03-00	-10	-10	-11	-11	-12	-11	-12	-11	-11	-13	-10	-12		
	<b>FR</b>	-34	08-93	-18	4	01-01	-14	-14	-17	-21	-17	-16	-15	-13	-15	-16	-16	-15		
	<b>IE</b>	-31	03-93	-4	19	01-00	4	7	1	-1	1	4	1	-4	-3	1	3	4		
	<b>IT</b>	-38	04-93	-13	2	06-01	-18	-18	-16	-17	-19	-21	-21	-21	-20	-17	-17	-19		
	<b>CY</b>	-43	07-04	-30	-13	06-01	-36	-35	-38	-35	-39	-41	-40	-40	-35	-35	-37	-36		
	<b>LV</b>	-45	02-93	-24	-7	09-01	-12	-11	-14	-12	-14	-16	-14	-15	-14	-12	-11	-8		
	<b>LT</b>	-32	05-01	-13	-1	10-04	-3	-5	-1	-4	-3	-4	-6	-7	-5	-1	-2	-2		
	<b>LU</b>	-4	09-05	3	14	02-02	2	4	3	2	2	0	-1	-4	-1	1	-1	2		
	<b>HU</b>	-58	04-95	-28	0	08-02	-21	-24	-28	-30	-32	-27	-26	-24	-26	-21	-17	-15		
	<b>MT</b>	-34	05-05	-23	0	01-03	-29	-28	-32	-34	-33	-33	-33	-29	-29	-29	-29	-24		
	<b>NL</b>	-19	07-93	4	31	03-00	-4	-3	2	-4	-5	-4	-7	-7	-2	-2	3	3		
	<b>AT</b>	-16	04-96	-1	11	07-00	-3	-2	0	-3	-3	-4	-4	-5	-3	-2	-3	2		
<b>PL</b>	-40	08-01	-29	-13	01-06	-19	-18	-18	-21	-23	-23	-22	-20	-18	-15	-14	-13			
<b>PT</b>	-49	03-03	-23	-1	07-91	-34	-31	-30	-31	-39	-42	-42	-41	-41	-40	-41	-41			
<b>SI</b>	-29	06-99	-19	-9	10-04	-13	-15	-13	-13	-18	-18	-17	-21	-22	-26	-24	-16			
<b>SK</b>	-50	08-99	-30	-9	06-05	-13	-13	-10	-12	-9	-12	-14	-24	-18	-12	-14	-14			
<b>FI</b>	6	11-01	15	23	02-00	16	17	14	14	10	12	15	13	16	17	17	14			
<b>SE</b>	-10	09-96	7	25	03-00	8	7	6	5	3	3	4	6	8	8	10	12			
<b>UK</b>	-28	10-92	-8	7	10-97	0	3	0	-3	-3	-1	-2	-3	-4	-4	-4	-4			
FINANCIAL SITUATION OF HOUSEHOLDS OVER NEXT 12 MONTHS	<b>EU</b>	-10	12-93	-1	5	04-01	0	0	0	-1	-1	-1	-1	-2	-2	-1	-1			
	<b>Euro area</b>	-11	07-93	-2	5	03-00	-2	-3	-3	-4	-4	-4	-4	-5	-5	-4	-3			
	<b>BE</b>	-9	12-93	2	13	08-00	7	6	4	3	3	3	3	1	4	4	5	4		
	<b>CZ</b>	-32	02-98	-9	2	05-02	-3	-3	-6	-2	-3	0	-2	-4	-1	-1	-2	:		
	<b>DK</b>	2	12-90	12	39	10-00	15	17	15	15	15	17	14	15	14	15	15	16		
	<b>DE</b>	-15	02-94	-5	4	05-00	-3	-4	-4	-6	-6	-7	-6	-8	-5	-5	-5	-3		
	<b>EE</b>	-38	04-93	-10	15	01-06	-2	3	1	2	4	9	5	-6	9	8	11	15		
	<b>EL</b>	-31	08-92	-15	10	04-00	-17	-19	-20	-17	-22	-18	-20	-24	-24	-22	-23	-19		
	<b>ES</b>	-16	10-92	1	10	10-99	-1	-1	-2	-1	-2	0	0	-1	-1	-3	1	-3		
	<b>FR</b>	-12	12-95	-1	6	01-01	-2	-1	-2	-3	-2	-2	-1	0	-5	-6	-4	-3		
	<b>IE</b>	-13	02-93	1	16	01-00	2	4	-1	-1	1	1	-1	-5	-2	1	2	3		
	<b>IT</b>	-15	04-93	-1	7	07-01	-4	-4	-2	-2	-3	-4	-4	-4	-4	-3	-2	-4		
	<b>CY</b>	-35	06-04	-16	0	06-01	-27	-25	-30	-27	-25	-32	-31	-32	-32	-30	-32	-31		
	<b>LV</b>	-29	09-93	-7	9	08-02	3	6	4	6	2	3	2	-1	2	3	4	7		
	<b>LT</b>	-10	10-01	0	7	06-05	3	4	6	2	7	5	4	3	3	6	4	5		
	<b>LU</b>	0	10-05	5	12	06-02	4	9	3	7	3	2	2	1	0	2	0	2		
	<b>HU</b>	-63	04-95	-22	16	08-02	-7	-10	-13	-16	-18	-11	-9	-9	-11	-7	-2	1		
	<b>MT</b>	-35	05-05	-20	3	01-03	-29	-28	-33	-35	-31	-30	-27	-26	-27	-28	-25	-21		
	<b>NL</b>	-11	12-04	3	16	12-99	-5	-6	-2	-5	-7	-3	-10	-10	-8	-8	-6	-6		
	<b>AT</b>	-18	04-96	-4	4	04-99	-1	-2	-2	-3	-3	-4	-4	-8	-3	-5	-2	1		
<b>PL</b>	-20	08-01	-10	-1	01-06	-3	-3	-3	-5	-8	-8	-6	-5	-6	-2	-3	-1			
<b>PT</b>	-26	03-03	-8	11	01-92	-18	-15	-15	-14	-21	-23	-23	-23	-22	-22	-21	-21			
<b>SI</b>	-30	06-99	-11	-2	11-96	-4	-6	-4	-4	-10	-9	-6	-11	-12	-18	-17	-9			
<b>SK</b>	-44	08-99	-24	-7	06-05	-8	-10	-8	-9	-7	-9	-13	-22	-16	-9	-9	-10			
<b>FI</b>	-8	04-93	6	13	10-04	13	11	11	11	10	12	12	9	11	12	11	9			
<b>SE</b>	-13	09-96	8	18	07-02	12	16	12	14	14	13	13	13	14	15	16	17			
<b>UK</b>	-23	03-90	3	16	09-02	10	11	10	10	9	10	11	10	8	8	8	9			
GENERAL ECONOMIC SITUATION OVER NEXT 12 MONTHS	<b>EU</b>	-32	03-93	-12	1	04-00	-11	-10	-12	-15	-15	-17	-15	-14	-14	-15	-12	-11		
	<b>Euro area</b>	-35	03-93	-13	4	04-00	-13	-13	-14	-17	-17	-19	-17	-16	-15	-17	-12	-11		
	<b>BE</b>	-46	07-93	-11	20	06-00	-1	2	-5	-16	-18	-18	-13	-22	-8	-11	-9	-7		
	<b>CZ</b>	-40	09-97	-11	8	11-05	2	2	0	1	3	3	3	8	5	8	2	:		
	<b>DK</b>	-23	02-99	-2	23	07-01	10	13	5	6	6	2	5	6	8	9	6	8		
	<b>DE</b>	-41	03-93	-16	6	02-99	-19	-23	-21	-20	-21	-24	-20	-19	-14	-16	-8	-5		
	<b>EE</b>	-38	04-93	-3	25	03-03	11	11	7	8	5	9	8	-4	15	16	22	23		
	<b>EL</b>	-37	12-03	-17	17	01-00	-21	-19	-24	-20	-29	-21	-25	-24	-31	-27	-28	-24		
	<b>ES</b>	-38	10-92	-5	11	08-97	-4	-5	-7	-9	-9	-7	-8	-7	-7	-14	-9	-10		
	<b>FR</b>	-37	01-91	-17	5	01-01	-15	-10	-17	-26	-15	-22	-17	-11	-22	-25	-22	-21		
	<b>IE</b>	-33	12-02	-2	22	01-00	0	6	-3	-3	-5	-1	-7	-15	-10	-4	-1	-1		
	<b>IT</b>	-40	04-93	-9	13	02-95	-12	-12	-10	-14	-20	-20	-19	-20	-17	-14	-11	-16		
	<b>CY</b>	-45	06-04	-23	-7	05-01	-31	-33	-38	-35	-31	-35	-34	-32	-24	-22	-24	-23		
	<b>LV</b>	-27	06-95	-7	11	05-03	6	9	3	5	0	-3	-2	-3	-4	-5	1	5		
	<b>LT</b>	-18	05-01	2	16	10-04	10	8	11	9	8	6	1	-4	-2	4	3	3		
	<b>LU</b>	-28	09-05	-8	7	02-02	-5	0	-5	-8	-20	-15	-19	-28	-24	-18	-23	-18		
	<b>HU</b>	-53	04-95	-14	19	08-02	-5	-8	-13	-16	-18	-11	-7	-8	-8	-6	0	2		
	<b>MT</b>	-32	05-05	-17	11	11-02	-30	-26	-29	-32	-31	-28	-26	-25	-23	-22	-20	-15		
	<b>NL</b>	-42	03-93	-8	26	03-00	-6	-4	4	-6	-11	-6	-14	-12	-6	-6	-2	-2		
	<b>AT</b>	-26	04-96	-6	8	11-99	-6	-4	-4	-8	-7	-10	-10	-13	-11	-9	-5	0		
<b>PL</b>	-35	08-01	-20	3	01-06	-7	-7	-5	-11	-12	-8	-8	-8	-3	-1	-1	3			
<b>PT</b>	-52	03-03	-17	12	01-92	-24	-18	-17	-18	-35	-38	-39	-38	-37	-34	-36	-36			
<b>SI</b>	-22	11-05	-9	7	10-04	0	-4	4	1	-5	-7	-6	-11	-11	-22	-20	-6			
<b>SK</b>	-51	09-99	-29	-2	06-05	-6	-3	-3	-6	-2	-6	-9	-24	-18	-10					

TABLE 4a (continued): Consumer opinion on economic and financial conditions (s.a.)<sup>(a)</sup>

		Since 01/1990					2005										2006	
		Min.		Ave.		Max.	Feb.	Mar.	Apr.	May	June	July	Aug.	Sep.	Oct.	Nov.	Dec.	Jan.
		Value	Date	Value	Date	Value												
SAVINGS OVER NEXT 12 MONTHS	<b>EU</b>	-15	08-93	-4	4	04-01	-4	-4	-4	-4	-3	-4	-4	-5	-4	-5	-5	
	<b>Euro area</b>	-14	08-93	-5	4	03-01	-8	-9	-8	-7	-7	-9	-8	-9	-9	-8	-9	
Component of the consumer confidence indicator	<b>BE</b>	-2	12-93	13	31	06-98	16	16	17	13	14	12	11	6	10	7	15	
	<b>CZ</b>	-16	03-98	-4	11	08-03	2	5	0	-1	4	0	1	10	3	9	6	
	<b>DK</b>	-3	01-90	23	39	04-05	37	38	39	38	39	39	32	36	34	38	36	
	<b>DE</b>	-5	03-03	7	23	08-90	5	0	2	1	-1	-2	1	-1	0	1	1	
	<b>EE</b>	-69	10-93	-49	-11	08-01	-36	-28	-32	-33	-29	-24	-27	-31	-23	-22	-16	
	<b>EL</b>	-57	07-95	-44	-23	01-00	-47	-45	-48	-48	-47	-47	-45	-48	-47	-47	-48	
	<b>ES</b>	-34	01-90	-19	0	07-00	-24	-20	-23	-22	-25	-25	-26	-27	-23	-23	-18	
	<b>FR</b>	-36	03-96	-23	-7	04-04	-15	-14	-18	-15	-14	-13	-12	-11	-15	-17	-20	
	<b>IE</b>	-32	03-93	-1	28	02-02	20	21	19	17	20	19	21	18	13	17	24	
	<b>IT</b>	-39	10-04	-16	2	03-91	-35	-36	-29	-24	-21	-29	-32	-29	-28	-26	-33	
	<b>CY</b>	-55	06-02	-42	-13	06-01	-43	-38	-42	-33	-49	-46	-48	-42	-44	-42	-45	
	<b>LV</b>	-90	03-96	-55	13	01-94	-50	-50	-52	-48	-50	-50	-49	-52	-49	-44	-48	
	<b>LT</b>	-55	05-01	-46	-35	04-05	-40	-43	-35	-42	-42	-38	-42	-44	-38	-38	-37	
	<b>LU</b>	40	05-05	48	58	10-05	46	44	46	40	53	47	48	49	58	52		
	<b>HU</b>	-70	11-95	-53	-19	01-00	-45	-44	-47	-48	-50	-44	-46	-45	-47	-41		
	<b>MT</b>	-51	12-05	-37	-15	11-02	-36	-37	-39	-43	-40	-47	-51	-45	-46	-47		
	<b>NL</b>	17	09-05	38	55	10-99	24	22	25	24	29	21	22	17	18	21		
	<b>AT</b>	-11	11-00	32	55	03-02	27	27	29	29	29	33	30	32	36	39		
	<b>PL</b>	-67	09-03	-51	-22	09-01	-50	-49	-50	-49	-48	-53	-53	-51	-50	-49		
	<b>PT</b>	-55	12-05	-34	-14	01-92	-51	-51	-49	-48	-51	-51	-54	-53	-55	-55		
	<b>SI</b>	-52	06-99	-28	-15	06-03	-25	-18	-22	-20	-25	-21	-22	-17	-21	-21		
<b>SK</b>	-70	08-01	-41	-29	08-00	-37	-41	-34	-35	-32	-37	-31	-40	-38	-33			
<b>FI</b>	19	01-96	38	53	05-04	50	51	49	53	50	49	51	51	51	53			
<b>SE</b>	11	06-98	29	46	06-00	30	33	29	26	29	31	29	31	35	31			
<b>UK</b>	-26	10-92	-5	17	03-05	14	17	17	12	14	16	17	16	15	14			
UNEMPLOYMENT OVER NEXT 12 MONTHS	<b>EU</b>	-2	12-00	26	56	03-93	26	27	26	28	30	27	27	26	23			
	<b>Euro area</b>	-3	01-01	28	60	08-93	30	31	29	31	33	30	29	28	23			
Component of the consumer confidence indicator	<b>BE</b>	-19	12-00	28	63	10-93	33	30	32	43	44	42	41	41	31			
	<b>CZ</b>	4	05-01	35	64	03-99	19	14	18	9	13	9	17	14	11			
	<b>DK</b>	-19	11-97	7	38	12-92	-2	-1	3	3	5	3	2	-5	-5			
	<b>DE</b>	-3	01-01	30	58	10-93	43	44	37	31	35	34	33	30	26			
	<b>EE</b>	-15	01-06	33	80	04-93	14	6	6	8	5	0	2	1	-2			
	<b>EL</b>	24	04-90	44	62	12-98	43	47	47	40	46	42	41	43	44			
	<b>ES</b>	-8	03-00	18	67	01-93	10	12	11	13	13	12	14	10	12			
	<b>FR</b>	-14	01-01	31	64	03-03	25	32	32	40	38	27	29	32	17			
	<b>IE</b>	-29	12-99	15	58	04-92	7	4	11	17	12	4	8	15	14			
	<b>IT</b>	-2	06-01	27	70	04-93	21	22	22	26	32	32	31	29	28			
	<b>CY</b>	26	05-01	37	53	09-05	42	46	43	46	50	50	49	53	39			
	<b>LV</b>	-4	01-06	27	54	01-93	6	7	12	9	8	12	5	6	5			
	<b>LT</b>	-24	01-06	7	46	05-01	-14	-11	-13	-15	-17	-13	-13	-15	-17			
	<b>LU</b>	14	02-02	34	44	06-03	38	37	33	31	42	36	35	36	37			
	<b>HU</b>	-3	07-98	28	59	02-93	27	33	36	40	44	41	40	35	37			
	<b>MT</b>	-2	01-03	19	34	01-04	21	22	29	28	29	28	27	20	20			
	<b>NL</b>	-35	07-98	18	77	03-93	28	25	19	29	33	29	26	23	11			
	<b>AT</b>	-9	11-00	27	49	12-96	32	29	24	30	29	33	33	32	34			
	<b>PL</b>	7	01-06	36	64	05-01	15	15	14	21	24	24	20	16	13			
	<b>PT</b>	-10	08-97	33	73	10-93	43	40	40	42	48	55	53	51	51			
	<b>SI</b>	7	09-01	26	44	09-05	24	31	28	29	31	33	34	44	43			
<b>SK</b>	-4	01-06	25	68	08-99	-1	-1	-3	-3	-4	-3	2	8	-1				
<b>FI</b>	-31	01-95	-1	42	07-91	3	3	7	9	14	13	7	6	0				
<b>SE</b>	-26	03-00	7	39	11-01	10	18	13	17	24	24	21	14	13				
<b>UK</b>	-11	04-98	21	53	02-91	17	16	21	23	22	21	24	24	25				
FINANCIAL SITUATION OF HOUSEHOLDS OVER LAST 12 MONTHS	<b>EU</b>	-19	01-94	-10	-2	05-00	-11	-11	-11	-12	-12	-13	-12	-12	-12			
	<b>Euro area</b>	-20	02-03	-11	-1	05-90	-13	-14	-14	-15	-15	-16	-15	-15	-15			
Component of the consumer confidence indicator	<b>BE</b>	-16	12-93	-5	4	11-00	-4	-4	-5	-8	-4	-7	-7	-7	-6			
	<b>CZ</b>	-30	02-98	-15	-5	05-96	-10	-10	-15	-11	-8	-10	-11	-11	-7			
	<b>DK</b>	-5	04-01	7	16	02-05	16	16	14	10	10	12	14	12	14			
	<b>DE</b>	-31	12-02	-12	4	05-90	-11	-11	-12	-12	-13	-15	-12	-13	-13			
	<b>EE</b>	-54	04-93	-17	13	01-06	-1	3	0	-1	1	6	5	-3	7			
	<b>EL</b>	-43	01-93	-28	-6	04-00	-29	-28	-28	-27	-34	-31	-31	-29	-32			
	<b>ES</b>	-28	01-94	-8	4	04-00	-9	-11	-10	-10	-9	-9	-10	-10	-10			
	<b>FR</b>	-18	06-96	-10	-2	01-01	-11	-13	-12	-14	-14	-14	-13	-12	-16			
	<b>IE</b>	-25	02-93	-7	11	04-00	-2	0	-6	-3	-5	-4	-5	-7	-9			
	<b>IT</b>	-30	02-04	-14	-1	05-90	-23	-23	-23	-26	-27	-27	-25	-23	-24			
	<b>CY</b>	-36	10-05	-18	-5	07-03	-24	-25	-29	-29	-27	-31	-29	-32	-36			
	<b>LV</b>	-57	01-93	-22	-3	12-05	-6	-5	-7	-3	-8	-8	-6	-8	-6			
	<b>LT</b>	-29	06-01	-12	3	12-05	-2	-3	-1	-1	0	2	-1	-2	-1			
	<b>LU</b>	-3	10-05	1	8	01-02	0	-1	-1	4	1	1	0	-1	-3			
	<b>HU</b>	-65	11-95	-36	0	08-02	-26	-22	-26	-29	-30	-25	-25	-25	-24			
	<b>MT</b>	-41	05-05	-29	-11	01-03	-38	-35	-39	-41	-38	-37	-36	-37	-37			
	<b>NL</b>	-25	03-05	0	17	02-00	-23	-25	-23	-21	-18	-19	-21	-22	-20			
	<b>AT</b>	-23	11-02	-13	-2	08-99	-17	-14	-16	-16	-16	-15	-15	-18	-15			
	<b>PL</b>	-35	08-01	-24	-13	01-06	-17	-15	-15	-13	-18	-19	-17	-16	-19			
	<b>PT</b>	-29	04-03	-13	3	01-92	-21	-21	-19	-20	-22	-24	-24	-25	-23			
	<b>SI</b>	-36	06-99	-26	-14	05-05	-19	-20	-17	-14	-18	-19	-20	-21	-23			
<b>SK</b>	-43	10-99	-28	-12	06-05	-17	-16	-16	-15	-12	-16	-15	-20	-18				
<b>FI</b>	-22	04-93	0	9	04-05	6	8	9	7	5	5	7	7	7				
<b>SE</b>	-13	11-95	2	10	06-00	3	6	4	5	4	5	7	4	6				
<b>UK</b>	-32	05-90	-8	7	06-02	-1	-1	-1	0	-1	-1	-2	0	-1				

TABLE 4a (continued): Consumer opinion on economic and financial conditions (s.a.)<sup>(a)</sup>

		Since 01/1990						2005												2006
		Min.		Ave.		Max.		Feb.	Mar.	Apr.	May	June	July	Aug.	Sep.	Oct.	Nov.	Dec.	Jan.	
		Value	Date	Value	Date	Value	Date													
GENERAL	<b>EU</b>	-55	03-93	-27	-4	05-00	-28	-29	-30	-31	-34	-35	-33	-33	-34	-33	-30	-28		
ECONOMIC	<b>Euro area</b>	-58	07-93	-29	-2	05-00	-33	-34	-36	-37	-40	-41	-39	-38	-39	-37	-34	-31		
SITUATION	<b>BE</b>	-61	08-93	-25	22	12-00	-14	-11	-17	-29	-37	-36	-32	-41	-30	-28	-27	-23		
OVER LAST	<b>CZ</b>	-54	12-97	-21	3	10-95	-11	-7	-10	-7	-3	-5	-4	-1	-2	-1	-1	:		
12 MONTHS	<b>DK</b>	-25	04-93	1	25	01-06	16	19	16	15	15	18	20	19	22	23	22	25		
	<b>DE</b>	-60	05-03	-28	12	01-90	-34	-39	-40	-37	-42	-42	-39	-40	-38	-36	-31	-26		
	<b>EE</b>	-72	10-92	-11	26	01-06	7	12	5	8	8	11	7	6	12	17	19	26		
	<b>EL</b>	-50	05-90	-31	6	05-00	-33	-30	-30	-28	-38	-32	-37	-34	-38	-35	-34	-34		
	<b>ES</b>	-61	08-93	-16	13	03-00	-15	-16	-18	-16	-18	-16	-20	-21	-22	-21	-17	-17		
	<b>FR</b>	-57	10-96	-36	-1	01-01	-37	-37	-40	-42	-38	-46	-42	-37	-47	-50	-46	-43		
	<b>IE</b>	-59	03-93	-5	42	08-99	4	7	-1	-2	-3	2	-4	-12	-9	-2	4	6		
	<b>IT</b>	-74	04-93	-39	-8	05-90	-46	-47	-51	-55	-61	-60	-54	-55	-54	-46	-44	-47		
	<b>CY</b>	-41	07-04	-26	-13	01-02	-31	-32	-38	-37	-30	-31	-31	-32	-30	-28	-28	-27		
	<b>LV</b>	-59	01-93	-24	3	12-03	-6	-6	-11	-6	-13	-14	-16	-16	-17	-16	-15	-11		
	<b>LT</b>	-41	05-01	-10	6	10-04	4	3	5	2	4	4	-1	-6	-3	3	2	2		
	<b>LU</b>	-36	06-03	-23	-3	01-02	-21	-17	-21	-17	-24	-24	-26	-27	-28	-26	-25	-23		
	<b>HU</b>	-71	04-95	-32	6	09-02	-24	-22	-28	-32	-33	-25	-23	-21	-23	-23	-21	-15		
	<b>MT</b>	-45	05-05	-28	-2	02-03	-38	-34	-39	-45	-42	-42	-39	-37	-37	-33	-32	-31		
	<b>NL</b>	-73	03-03	-13	45	03-00	-40	-35	-30	-32	-37	-39	-41	-41	-32	-28	-25	-22		
	<b>AT</b>	-50	02-97	-24	8	07-00	-28	-25	-22	-24	-26	-29	-31	-31	-30	-27	-24	-19		
	<b>PL</b>	-55	09-01	-38	-9	01-06	-21	-20	-17	-20	-22	-19	-14	-18	-15	-10	-11	-9		
	<b>PT</b>	-60	03-03	-25	13	10-91	-51	-49	-46	-44	-49	-54	-55	-55	-55	-53	-52	-52		
	<b>SI</b>	-39	09-98	-28	-14	04-05	-19	-22	-14	-16	-22	-24	-22	-31	-29	-28	-28	-23		
	<b>SK</b>	-69	10-99	-40	-10	06-05	-16	-11	-12	-13	-10	-13	-13	-21	-23	-19	-18	-20		
	<b>FI</b>	-65	01-92	-4	30	08-98	7	7	2	-1	-6	-4	2	-2	4	4	3	0		
	<b>SE</b>	-25	04-03	-6	25	03-00	-2	-4	-6	-6	-9	-10	-6	-7	-6	-3	3	5		
	<b>UK</b>	-67	11-92	-25	5	10-97	-14	-13	-13	-14	-19	-17	-19	-23	-22	-25	-27	-24		
SAVINGS	<b>EU</b>	:	:	:	:	:	:	:	:	:	:	:	:	:	:	:	:	:		
AT PRESENT <sup>(c)</sup>	<b>Euro area</b>	:	:	:	:	:	:	:	:	:	:	:	:	:	:	:	:	:		
	<b>BE</b>	-45	12-03	42	70	02-01	-24	-29	-28	-10	-16	-20	-28	-32	-30	-32	-28	-31		
	<b>CZ</b>	-35	01-03	-15	15	03-01	-19	-18	-20	-20	-21	-16	-18	-12	-9	-9	-10	:		
	<b>DK</b>	51	01-90	65	78	07-92	68	71	69	73	73	69	67	69	68	74	72	74		
	<b>DE</b>	29	11-92	45	61	09-02	45	42	44	42	45	43	45	45	46	47	46	45		
	<b>EE</b>	-58	09-96	-36	-14	08-01	-27	-23	-23	-27	-23	-23	-24	-26	-20	-19	-17	-17		
	<b>EL</b>	-70	10-05	-46	-18	01-00	-64	-61	-60	-60	-62	-63	-59	-64	-70	-65	-63	-60		
	<b>ES</b>	-33	12-03	27	59	08-96	-18	-19	-20	-21	-24	-21	-25	-27	-26	-25	-24	-25		
	<b>FR</b>	2	12-05	41	61	06-95	14	15	17	12	13	9	11	13	7	8	2	9		
	<b>IE</b>	-2	03-93	21	56	12-01	35	44	38	34	37	37	39	31	32	35	39	40		
	<b>IT</b>	26	06-04	45	66	01-06	46	47	46	46	56	54	51	54	54	58	59	66		
	<b>CY</b>	-37	07-04	-13	9	06-01	-2	9	-7	-4	-11	-16	-23	-7	-11	-22	-23	-12		
	<b>LV</b>	-78	12-95	-58	-28	09-01	-50	-49	-53	-53	-55	-53	-50	-56	-56	-52	-55	-52		
	<b>LT</b>	-50	10-05	-39	-27	05-02	-41	-40	-40	-44	-43	-46	-48	-49	-50	-48	-46	-48		
	<b>LU</b>	45	04-03	54	63	01-03	59	59	57	50	57	56	57	55	57	54	54	57		
	<b>HU</b>	-83	11-95	-65	-28	12-00	-51	-54	-52	-54	-57	-52	-55	-53	-54	-52	-53	-47		
	<b>MT</b>	-56	08-05	-40	-24	01-03	-40	-41	-43	-48	-46	-54	-56	-50	-50	-50	-54	-52		
	<b>NL</b>	47	06-91	61	70	09-96	61	62	63	59	64	62	62	63	63	61	61	63		
	<b>AT</b>	17	12-96	42	64	09-02	52	51	52	53	51	54	54	55	56	57	50	55		
	<b>PL</b>	-49	09-01	-37	-24	01-06	-35	-30	-34	-33	-33	-34	-38	-32	-33	-26	-32	-24		
	<b>PT</b>	-64	01-06	-40	-13	01-92	-63	-62	-63	-60	-63	-64	-63	-64	-64	-64	-63	-64		
	<b>SI</b>	-25	09-97	-12	-1	08-04	-9	-5	-3	-1	-7	-5	-2	-3	-3	-7	-12	-6		
	<b>SK</b>	-55	10-04	-47	-36	03-00	-50	-46	-47	-48	-47	-49	-50	-51	-54	-52	-50	-48		
	<b>FI</b>	-23	04-94	4	22	10-92	15	16	18	13	14	13	14	12	18	13	16	12		
	<b>SE</b>	-9	09-01	6	20	01-00	-1	-1	1	2	3	2	5	4	8	6	9	11		
	<b>UK</b>	-16	03-03	12	36	05-90	24	28	28	25	25	26	22	26	26	22	24	27		
MAJOR	<b>EU</b>	-21	07-93	-16	-10	03-00	-17	-17	-16	-18	-17	-17	-17	-18	-17	-17	-17	-15		
PURCHASES	<b>Euro area</b>	-21	07-93	-17	-12	03-00	-18	-18	-18	-19	-18	-18	-18	-19	-19	-18	-18	-16		
OVER NEXT	<b>BE</b>	-29	10-96	-15	-6	10-03	-14	-14	-16	-14	-14	-14	-13	-13	-12	-11	-11	-11		
12 MONTHS	<b>CZ</b>	-36	01-01	-24	-6	11-05	-11	-17	-8	-16	-9	-10	-11	-14	-12	-6	-9	:		
	<b>DK</b>	-14	01-93	-6	3	01-06	0	0	1	-2	-4	-1	1	0	1	-3	-2	3		
	<b>DE</b>	-39	02-03	-26	-14	01-90	-30	-29	-31	-30	-29	-30	-28	-29	-29	-26	-27	-23		
	<b>EE</b>	-64	10-92	-25	-3	12-05	-12	-15	-11	-16	-14	-8	-9	-11	-3	-10	-3	-8		
	<b>EL</b>	-60	10-05	-23	5	06-03	-21	-21	-21	-22	-18	-32	-32	-49	-60	-47	-37	-34		
	<b>ES</b>	-48	11-93	-24	-7	11-00	-26	-23	-20	-23	-20	-22	-24	-24	-24	-24	-22	-24		
	<b>FR</b>	-6	12-05	-1	1	09-99	-4	-5	-4	-5	-5	-5	-5	-5	-6	-6	-6	-4		
	<b>IE</b>	-20	05-93	-9	2	12-00	-4	-3	-6	-3	-4	-5	-6	-7	-5	-7	-2	-4		
	<b>IT</b>	-23	10-92	-17	-9	04-05	-9	-11	-9	-14	-15	-12	-13	-14	-12	-17	-15	-13		
	<b>CY</b>	-5	03-04	11	39	03-03	7	-4	2	10	7	4	-3	5	-3	-5	4	0		
	<b>LV</b>	-84	03-96	-40	18	01-06	-1	6	1	5	4	6	14	17	16	16	15	18		
	<b>LT</b>	-18	12-02	-9	2	12-05	-9	-5	-6	-4	-3	-3	-2	-3	-2	1	2	2		
	<b>LU</b>	-19	06-05	-13	-6	01-02	-12	-12	-12	-18	-19	-11	-13	-17	-11	-11	-15	-12		
	<b>HU</b>	-69	06-95	-37	-8	08-02	-22	-22	-24	-29	-28	-25	-24	-22	-24	-19	-17	-15		
	<b>MT</b>	-21	06-04	-10	-2	03-05	-2	-2	-5	-3	-3	-6	-11	-9	-14	-12	-13	-16		
	<b>NL</b>	-25	03-03	-14	-4	11-98	-17	-20	-17	-22	-17	-19	-16	-19	-17	-16	-16	-13		
	<b>AT</b>	-26	11-04	-17	-4	11-00	-22	-19	-21	-21	-16	-21	-18	-26	-23	-23	-20	-18		
	<b>PL</b>	-25	09-01	-8	1	09-04														

TABLE 4a (continued) : Consumer opinion on economic and financial conditions (s.a.)<sup>(a)</sup>

		Since 01/1990			2005												2006	
		Min.		Ave.	Max.		Feb.	Mar.	Apr.	May	June	July	Aug.	Sep.	Oct.	Nov.	Dec.	Jan.
		Value	Date	Value	Date													
MAJOR PURCHASES AT PRESENT	EU	-22	07-93	-11	6	01-00	-12	-12	-13	-13	-14	-14	-13	-14	-14	-13	-12	-9
	<b>Euro area</b>	-28	03-03	-15	6	03-99	-19	-18	-20	-18	-21	-21	-20	-21	-20	-19	-18	-14
	BE	-40	06-97	-4	26	12-00	19	19	20	16	11	12	19	4	15	15	15	18
	CZ	-33	05-95	0	34	07-03	14	13	24	20	25	18	21	22	20	13	13	:
	DK	-27	01-93	-7	10	09-97	-5	1	-7	-10	-11	-5	-2	-3	-2	-1	-8	-1
	DE	-31	11-02	-11	6	04-99	-14	-13	-18	-14	-17	-14	-12	-15	-12	-12	-8	0
	EE	0	04-01	15	48	04-04	37	36	38	38	42	39	37	33	40	37	38	44
	EL	-68	10-05	-36	-10	01-01	-45	-37	-44	-45	-59	-50	-51	-58	-68	-52	-50	-42
	ES	-64	06-93	-18	26	11-99	-22	-19	-22	-22	-23	-23	-26	-26	-22	-25	-24	-24
	FR	-39	12-95	-14	14	07-00	-9	-11	-9	-12	-15	-19	-16	-13	-15	-18	-17	-16
	IE	-22	04-92	14	40	09-97	21	28	22	26	24	19	19	17	15	17	17	22
	IT	-64	11-96	-33	-2	05-90	-53	-51	-53	-44	-41	-47	-50	-45	-42	-40	-43	-39
	CY	-19	10-01	0	24	11-04	-4	-9	-5	1	1	-3	-9	-10	-9	-12	-8	1
	LV	-81	06-96	-40	19	11-05	1	-1	2	2	2	1	11	9	19	19	8	10
	LT	-10	05-01	21	45	11-05	33	39	34	36	39	38	37	40	43	45	38	45
	LU	-18	06-04	-9	0	08-04	-7	-8	-8	-4	0	-9	-10	-10	-2	-3	-5	-8
	HU	-87	06-96	-55	-9	10-02	-16	-17	-15	-21	-18	-14	-17	-14	-17	-12	-18	-10
	MT	-14	07-05	10	37	09-03	-1	8	2	-3	-7	-14	-10	-3	-4	-1	-8	4
	NL	-39	04-03	5	54	02-00	-28	-26	-26	-26	-33	-29	-29	-32	-34	-33	-31	-30
	AT	-14	07-02	7	29	08-99	-7	-6	-5	-3	-2	-7	-5	-10	-9	-2	3	0
PL	-27	11-01	-9	6	01-06	-7	-4	-2	-2	-1	-3	-1	-2	-7	2	1	6	
PT	-64	09-05	-33	-2	01-92	-58	-57	-58	-57	-60	-58	-62	-64	-61	-61	-62	-62	
SI	-50	04-97	-22	10	05-99	-9	-8	-5	-1	-1	3	-7	-8	-7	-2	-8	-12	
SK	-25	02-04	-10	4	08-99	-13	-15	-15	-10	-11	-10	-8	-14	-15	-11	-13	-12	
FI	-27	04-90	17	39	08-03	27	26	24	26	24	26	26	22	26	24	21	23	
SE	2	11-95	19	36	08-05	29	30	29	27	27	28	36	31	35	28	32	34	
UK	-22	05-90	8	28	11-02	14	12	12	5	6	9	7	9	4	8	6	8	
PRICE TRENDS OVER NEXT 12 MONTHS	EU	6	06-03	23	49	01-91	9	9	10	11	11	16	14	16	16	15	15	
	<b>Euro area</b>	3	04-04	23	51	01-91	9	9	10	12	13	17	14	15	17	17	15	15
	BE	-4	09-02	20	46	10-01	14	15	20	17	18	17	17	23	18	16	15	15
	CZ	11	05-05	45	72	03-98	15	18	14	11	15	24	25	25	16	17	22	:
	DK	-29	08-93	-11	28	08-02	-19	-15	-9	-14	-14	-8	-7	6	-9	2	5	3
	DE	5	12-04	32	58	03-91	8	9	9	9	11	19	14	18	16	21	20	15
	EE	23	04-93	48	88	05-04	53	51	56	51	55	57	60	75	52	44	41	39
	EL	0	03-04	38	60	05-90	18	19	17	17	36	33	36	38	38	39	33	27
	ES	-4	11-98	14	36	01-02	16	18	23	28	27	27	30	30	31	30	25	23
	FR	-13	08-97	11	54	01-91	15	13	11	17	15	20	15	10	20	19	19	17
	IE	6	01-94	22	42	10-00	20	15	21	24	23	27	30	36	28	18	20	24
	IT	-23	12-04	21	62	02-91	-12	-12	-9	-7	-13	-9	-13	-8	-3	-11	-14	-7
	CY	16	01-06	46	68	09-02	37	36	45	43	38	47	47	47	28	28	29	16
	LV	16	03-00	33	70	03-04	41	39	45	46	52	50	49	50	53	49	49	46
	LT	14	02-03	44	75	05-04	52	51	48	56	55	62	64	65	60	55	57	56
	LU	2	06-03	14	26	03-03	16	16	14	19	20	19	21	25	22	24	24	20
	HU	32	01-06	50	65	05-95	46	46	49	47	50	49	46	47	49	44	38	32
	MT	3	12-02	20	42	08-05	23	23	24	38	36	36	42	36	34	33	21	26
	NL	-28	12-02	24	60	01-91	12	16	4	8	12	13	16	18	14	21	15	19
	AT	-19	12-95	15	41	09-01	23	21	26	26	29	31	29	35	29	29	25	26
PL	7	04-05	31	54	04-04	16	16	7	19	21	24	25	32	28	25	15	21	
PT	-9	08-97	33	56	03-03	36	37	36	32	50	48	47	47	48	46	39	46	
SI	16	01-05	41	62	04-00	20	19	19	17	28	31	29	30	31	40	39	37	
SK	20	05-05	50	78	11-02	28	23	26	20	21	21	32	49	41	34	36	37	
FI	-21	12-95	11	40	09-01	19	21	24	20	24	25	26	29	26	23	25	28	
SE	-14	03-05	12	34	04-03	9	-14	3	0	4	8	13	5	10	14	20	9	
UK	5	03-05	26	57	09-90	6	5	7	6	7	11	9	16	11	9	13	14	
PRICE TRENDS OVER LAST 12 MONTHS	EU	-5	03-99	23	46	01-03	29	28	29	27	27	28	27	30	30	28	28	27
	<b>Euro area</b>	-4	01-99	27	62	01-03	38	38	39	37	36	38	37	39	40	38	37	36
	BE	-1	06-98	35	56	09-05	55	53	56	54	52	53	53	56	56	51	50	55
	CZ	-33	08-03	23	63	03-98	-17	-16	-17	-22	-16	-13	-15	-13	-9	-18	-16	:
	DK	-51	09-93	-25	-1	02-90	-35	-33	-28	-28	-29	-30	-24	-21	-24	-23	-24	-24
	DE	-3	03-99	31	74	08-02	23	22	25	20	21	25	25	32	31	31	29	27
	EE	-1	04-03	34	58	09-05	48	52	52	53	50	49	52	58	57	53	45	46
	EL	5	06-99	41	76	08-03	67	66	61	55	64	66	64	69	70	69	70	64
	ES	-5	06-97	31	65	03-03	52	53	52	52	52	52	53	53	51	52	51	53
	FR	-23	01-99	14	54	01-04	49	51	49	50	51	49	46	43	45	47	46	41
	IE	-3	07-97	30	66	12-02	42	40	42	38	36	37	44	45	45	35	38	36
	IT	0	05-97	36	70	11-03	43	41	43	46	42	45	37	37	41	34	32	36
	CY	21	08-01	42	62	02-04	47	41	51	50	46	42	50	60	50	46	53	44
	LV	-31	09-96	25	68	12-05	50	53	55	62	62	58	60	63	64	68	68	64
	LT	-17	10-03	11	40	09-05	26	24	25	32	26	31	35	40	37	36	37	33
	LU	21	01-02	39	47	11-05	40	41	44	37	44	38	41	44	44	47	47	44
	HU	9	12-02	40	71	06-95	20	20	23	22	25	20	18	19	21	16	15	9
	MT	18	06-04	38	60	08-05	37	35	39	56	59	54	60	51	53	51	51	44
	NL	-3	04-90	28	89	12-02	33	31	33	30	20	24	27	30	27	25	21	26
	AT	-48	02-96	7	46	01-03	35	39	42	40	38	40	36	40	38	39	38	34
PL	-4	05-03	19	45	10-04	33	31	24	29	29	24	27	29	31	22	19	18	
PT	-6	08-97	38	61	10-90	42	41	42	40	42	47	48	49	46	46	42	44	
SI	11	01-06	41	65	06-02	14	19	21	17	16	25	26	22	25	21	15	11	
SK	11	08-05	41	69	10-99	17	14	14	12	13	13	11	20					

TABLE 4b: Quarterly survey of consumers

Intention to buy a car within the next 12 months (s.a.) <sup>(a)(b)</sup>													
	Since 01/1990					2004			2005				2006
	Min.		Ave.	Max.		II	III	IV	I	II	III	IV	I
	Value	Date	Value	Date	Value								
<b>EU</b>	-73	II-04	-56.4	-47	II-00	-73	-71	-70	-73	-71	-70	-71	-69
<b>Euro area</b>	-75	I-05	-57.7	-49	I-00	-74	-73	-73	-75	-72	-72	-73	-71
<b>BE</b>	-81	I-05	-58	-45	II-95	-80	-80	-79	-81	-79	-74	-79	-77
<b>CZ</b>	-80	II-05	-73	-67	I-03	-78	-77	-77	-74	-80	-70	-73	:
<b>DK</b>	-79	I-90	-64	-43	I-97	-68	-69	-71	-75	-72	-67	-73	-69
<b>DE</b>	-78	II-04	-43	-28	II-90	-78	-74	-75	-77	-72	-71	-70	-67
<b>EE</b>	-86	IV-04	-71	-53	II-03	-81	-82	-86	-83	-85	-77	-75	-76
<b>EL</b>	-88	III-93	-66	-38	II-00	-70	-70	-67	-68	-65	-68	-74	-71
<b>ES</b>	-82	I-02	-68	-25	III-99	-76	-76	-73	-78	-74	-76	-75	-72
<b>FR</b>	-83	II-97	-77	-70	II-90	-79	-77	-72	-76	-74	-75	-77	-75
<b>IE</b>	-60	III-93	-39	-21	IV-99	-36	-31	-27	-24	-24	-27	-30	-30
<b>IT</b>	-87	I-05	-62	-47	II-90	-74	-80	-82	-87	-81	-80	-84	-81
<b>CY</b>	-66	I-03	-54	-45	I-04	-51	-50	-53	-53	-52	-55	-51	-53
<b>LV</b>	-84	I-00	-68	-11	I-02	-53	-53	-52	-64	-59	-56	-57	-54
<b>LT</b>	-82	I-05	-74	-65	III-01	-76	-77	-77	-82	-76	-75	-77	-78
<b>LU</b>	-77	IV-05	-48	-23	III-02	-62	-54	-59	-58	-57	-59	-77	-64
<b>HU</b>	-87	II-04	-71	-33	I-00	-87	-85	-83	-81	-85	-82	-81	-82
<b>MT</b>	-90	II-05	-84	-75	I-03	-85	-88	-86	-88	-90	-86	-86	-83
<b>NL</b>	-59	IV-05	-45	-37	IV-99	-51	-48	-48	-51	-52	-54	-59	-50
<b>AT</b>	-80	I-04	-50	44	I-01	-60	-61	-60	-63	-62	-64	-61	-61
<b>PL</b>	-77	III-03	-75	-72	IV-01	-73	-73	-75	-75	-75	-77	-74	-72
<b>PT</b>	-89	I-06	-68	-56	III-98	-84	-81	-81	-80	-83	-87	-86	-89
<b>SI</b>	-77	I-04	-56	-44	I-01	-72	-67	-69	-70	-69	-63	-68	-67
<b>SK</b>	-85	II-04	-80	-75	IV-02	-85	-84	-85	-82	-80	-83	-84	-81
<b>FI</b>	-62	IV-04	-46	-31	IV-02	-57	-57	-62	-58	-59	-59	-61	-59
<b>SE</b>	-58	I-04	-40	-27	I-00	-57	-52	-54	-56	-58	-52	-55	-57
<b>UK</b>	-71	III-93	-49	-8	II-00	-67	-63	-60	-61	-63	-60	-59	-60
Intention to purchase or build a home within the next 12 months (s.a.) <sup>(a)(b)</sup>													
	Since 01/1990					2004			2005				2006
	Min.		Ave.	Max.		II	III	IV	I	II	III	IV	I
	Value	Date	Value	Date	Value								
<b>EU</b>	-87	I-05	-82	-70	II-00	-86	-86	-86	-87	-87	-86	-87	-87
<b>Euro area</b>	-89	IV-05	-83	-78	I-01	-87	-87	-88	-89	-88	-88	-89	-89
<b>BE</b>	-93	IV-03	-80	-67	II-95	-91	-87	-90	-89	-89	-88	-88	-87
<b>CZ</b>	-92	I-05	-88	-83	II-02	-92	-88	-88	-92	-85	-88	-88	:
<b>DK</b>	-86	III-03	-76	-62	II-02	-79	-79	-75	-80	-82	-81	-78	-77
<b>DE</b>	-93	IV-05	-84	-78	IV-99	-93	-91	-91	-92	-92	-91	-93	-92
<b>EE</b>	-90	I-05	-41	11	IV-99	-88	-89	-89	-90	-89	-79	-80	-79
<b>EL</b>	-92	I-95	-82	-68	I-03	-82	-82	-80	-84	-79	-86	-83	-84
<b>ES</b>	-88	IV-03	-80	-71	III-99	-85	-86	-82	-85	-83	-81	-82	-81
<b>FR</b>	-90	II-92	-87	-81	II-04	-81	-84	-85	-85	-86	-84	-88	-85
<b>IE</b>	-83	IV-93	-79	-72	I-06	-79	-73	-76	-76	-76	-78	-74	-72
<b>IT</b>	-95	I-06	-86	-79	IV-90	-88	-92	-92	-94	-92	-94	-94	-95
<b>CY</b>	-80	I-03	-73	-65	I-04	-69	-67	-74	-75	-72	-75	-72	-73
<b>LV</b>	-95	I-03	-84	-15	I-02	-76	-76	-70	-89	-77	-74	-75	-75
<b>LT</b>	-93	I-06	-88	-82	I-03	-91	-89	-90	-91	-90	-91	-91	-93
<b>LU</b>	-82	IV-03	-73	-64	IV-02	-78	-72	-75	-77	-75	-74	-75	-76
<b>HU</b>	-90	II-04	-77	-39	I-00	-90	-89	-89	-84	-87	-86	-86	-86
<b>MT</b>	-93	I-05	-89	-85	I-04	-91	-90	-89	-93	-92	-89	-89	-89
<b>NL</b>	-84	IV-03	-77	-68	III-99	-79	-80	-83	-77	-80	-83	-80	-83
<b>AT</b>	-99	I-04	-79	51	I-01	-83	-85	-81	-90	-86	-87	-85	-87
<b>PL</b>	-89	II-03	-86	-82	I-04	-85	-87	-86	-88	-86	-86	-89	-84
<b>PT</b>	-92	I-06	-78	-70	II-90	-89	-87	-89	-88	-90	-90	-91	-92
<b>SI</b>	-89	IV-03	-77	-71	IV-96	-83	-79	-82	-82	-83	-77	-76	-80
<b>SK</b>	-90	IV-03	-86	-82	II-00	-88	-89	-88	-88	-86	-88	-87	-87
<b>FI</b>	-87	IV-03	-81	-76	III-02	-84	-86	-85	-85	-82	-84	-82	-82
<b>SE</b>	-78	I-96	-72	-61	IV-02	-77	-74	-76	-75	-75	-73	-72	-76
<b>UK</b>	-88	II-01	-75	-9	II-00	-80	-80	-80	-81	-79	-80	-80	-81

TABLE 4b (continued): Quarterly survey of consumers

	Intention to carry out home improvements over the next 12 months (s.a.) <sup>(a)(b)</sup>												
	Since 01/1990					2004			2005				2006
	Min.		Ave.	Max.		II	III	IV	I	II	III	IV	I
	Value	Date	Value	Date									
<b>EU</b>	-66	IV-96	-60	-51	II-00	-55	-56	-54	-55	-56	-57	-56	-54
<b>Euro area</b>	-68	III-93	-62	-57	III-00	-59	-61	-60	-61	-61	-62	-61	-60
<b>BE</b>	-65	III-97	-52	-32	III-01	-50	-48	-48	-46	-47	-45	-38	-48
<b>CZ</b>	-51	III-01	-36	-25	III-03	-34	-32	-35	-31	-28	-39	-42	:
<b>DK</b>	-87	I-90	-66	-26	I-00	-47	-60	-55	-67	-51	-59	-57	-56
<b>DE</b>	-60	III-93	-54	-46	I-90	-51	-54	-51	-52	-49	-53	-50	-48
<b>EE</b>	-68	IV-92	-44	-16	III-02	-32	-39	-44	-32	-20	-23	-22	-23
<b>EL</b>	-83	III-95	-70	-44	IV-95	-63	-64	-68	-79	-81	-80	-81	-77
<b>ES</b>	-82	II-94	-73	-61	IV-90	-80	-78	-74	-79	-74	-77	-76	-74
<b>FR</b>	-79	IV-95	-71	-56	II-04	-56	-59	-59	-59	-65	-60	-62	-61
<b>IE</b>	-81	II-90	-68	-50	I-06	-61	-59	-56	-58	-60	-62	-60	-50
<b>IT</b>	-87	III-03	-70	-59	III-98	-84	-85	-84	-85	-83	-82	-84	-85
<b>CY</b>	-71	IV-04	-60	-46	III-01	-62	-63	-71	-69	-67	-62	-61	-66
<b>LV</b>	-77	IV-95	-58	-10	I-02	-40	-44	-40	-51	-42	-39	-31	-33
<b>LT</b>	-65	IV-01	-61	-57	I-03	-59	-59	-62	-61	-60	-58	-58	-63
<b>LU</b>	-45	I-03	-33	-22	II-04	-22	-26	-25	-22	-33	-36	-36	-33
<b>HU</b>	-73	II-04	-56	-23	III-00	-73	-68	-71	-62	-68	-65	-68	-63
<b>MT</b>	-72	III-04	-67	-65	I-04	-66	-72	-70	-69	-68	-65	-68	-69
<b>NL</b>	-59	II-96	-48	-35	IV-00	-42	-43	-47	-46	-48	-55	-51	-44
<b>AT</b>	-56	I-03	-38	3	I-01	-23	-27	-28	-28	-24	-33	-26	-25
<b>PL</b>	-48	III-03	-38	-30	III-04	-31	-30	-36	-38	-42	-35	-33	-32
<b>PT</b>	-85	III-93	-61	50	III-92	-75	-75	-75	-79	-82	-85	-82	-85
<b>SI</b>	-48	I-04	-30	-17	II-01	-42	-34	-35	-33	-32	-36	-30	-25
<b>SK</b>	-63	III-04	-56	-48	IV-01	-63	-63	-60	-58	-55	-58	-57	-55
<b>FI</b>	-72	III-98	-64	-51	IV-05	-66	-65	-60	-53	-55	-53	-51	-54
<b>SE</b>	-47	II-96	-31	-18	IV-04	-27	-25	-18	-22	-21	-25	-22	-22
<b>UK</b>	-74	III-96	-54	-7	II-00	-37	-39	-35	-35	-37	-41	-40	-36

(a) Data collected in January, April, July and October each year.

(b) Balances: i.e., differences between the percentages of respondents giving positive and negative replies.

TABLE 5: Monthly survey of retail trade (s.a.)<sup>(a)(b)</sup>

		Since 01/1990						2005										2006
		Min.		Ave.	Max.		Feb.	Mar.	Apr.	May	June	July	Aug.	Sep.	Oct.	Nov.	Dec.	Jan.
		Value	Date	Value	Date													
RETAIL TRADE CONFIDENCE INDICATOR	EU	-19	12-92	-8	4	07-90	-7	-9	-9	-9	-11	-12	-9	-9	-6	-9	-6	-4
	Euro area	-21	03-93	-9	8	08-90	-8	-10	-8	-8	-9	-10	-9	-8	-4	-6	-4	-4
Component of the retail confidence indicator	BE	-25	05-93	-6	13	04-90	-2	-10	-4	-10	-7	-10	-8	-9	0	-7	-4	-5
	CZ	-1	02-99	14	26	08-02	20	19	14	15	16	16	15	19	20	24	22	15
	DK	-6	10-01	17	37	11-94	28	31	29	28	25	26	27	26	27	25	29	25
	DE	-44	01-03	-18	21	02-91	-22	-30	-25	-23	-22	-25	-23	-25	-19	-24	-24	-16
	EE	-1	04-03	18	30	04-04	20	22	25	22	22	28	21	22	24	23	26	26
	EL	-24	06-95	2	27	03-04	5	9	10	4	2	-1	1	5	5	4	12	11
	ES	-36	02-93	-7	10	06-00	-12	-7	-2	-1	-6	-4	-4	-5	-4	-3	-5	-10
	FR	-37	04-97	-16	6	10-04	-3	0	1	-3	-5	-11	-9	-6	-5	-3	0	-10
	IE	-21	05-03	3	24	06-00	-8	-3	-11	-8	-1	-5	2	-10	-7	0	0	-2
	IT	-19	10-96	8	39	10-95	14	12	3	13	6	16	19	24	30	22	26	27
	CY	-14	04-03	-5	5	04-05	-3	0	5	1	-2	1	-3	-5	3	1	1	-4
	LV	1	10-96	9	19	06-03	14	11	11	13	15	17	17	16	17	18	16	18
	LT	-25	09-00	-4	26	06-04	10	-5	-1	3	7	14	13	12	13	17	15	17
	HU	-28	05-05	-8	9	11-97	-20	-28	-24	-28	-25	-17	-26	-13	-12	-12	-12	-13
	NL	-16	12-03	12	30	10-99	-10	-6	-4	-10	-8	-10	-9	-7	-3	-3	7	7
	AT	-29	03-03	-13	4	07-00	-14	-10	-9	-15	-14	-13	-13	-10	-8	-9	-8	-4
	PL	-19	01-02	-6	7	07-98	-6	-7	-8	-7	-6	-6	-5	-5	-5	-1	-4	-4
	PT	-27	01-03	-8	4	01-99	-10	-7	-7	-10	-13	-17	-19	-19	-17	-20	-11	-6
	SI	3	01-01	11	23	04-99	10	8	14	13	13	18	16	16	16	19	17	21
	SK	-17	10-93	8	34	11-98	5	12	15	12	20	16	12	15	16	22	24	14
FI	-17	11-00	-4	10	05-04	-8	-4	-1	1	6	4	2	7	10	9	6	6	
SE	-8	09-01	7	27	01-06	2	0	1	-2	3	7	11	13	14	17	21	27	
UK	-32	11-05	-5	20	06-04	-9	-13	-19	-22	-28	-30	-21	-22	-23	-32	-23	-14	
PRESENT BUSINESS SITUATION	EU	-25	12-94	-8	18	04-90	-11	-13	-12	-13	-17	-16	-14	-13	-9	-14	-7	-4
	Euro area	-29	12-94	-10	21	01-91	-14	-15	-12	-13	-16	-14	-14	-12	-9	-11	-5	-5
Component of the retail confidence indicator	BE	-41	10-95	-6	29	06-00	-7	-16	-4	-15	-10	-12	-3	-16	-1	-7	-1	-8
	CZ	0	11-98	28	53	12-05	52	49	39	39	39	40	40	41	44	49	53	36
	DK	-1	08-01	29	57	11-94	44	47	47	47	44	46	51	50	46	42	49	44
	DE	-66	02-02	-21	46	11-90	-34	-37	-25	-27	-26	-25	-28	-27	-24	-29	-22	-16
	EE	6	01-03	36	63	05-04	35	36	41	35	40	51	39	46	45	45	49	57
	EL	-50	04-95	-8	40	01-04	12	14	8	7	0	-8	-7	-6	0	-1	10	4
	ES	-72	07-93	-28	4	06-00	-34	-34	-28	-26	-30	-21	-23	-21	-23	-25	-25	-31
	FR	-50	03-93	-13	11	10-94	-2	-1	0	-8	-7	-19	-17	-14	-16	-12	0	-13
	IE	-30	05-03	6	37	06-98	-4	-2	-10	-7	-3	-8	6	-5	-1	2	-5	3
	IT	-42	02-95	15	73	02-93	14	16	0	15	-10	17	18	21	34	29	27	37
	CY	-46	02-03	-29	-12	12-05	-18	-22	-26	-14	-23	-18	-25	-34	-19	-16	-12	-29
	LV	-18	07-96	5	32	01-06	22	14	17	20	28	25	26	27	24	26	25	32
	LT	-37	03-00	-11	43	06-04	14	-5	-2	9	5	15	16	19	18	14	10	14
	HU	-41	03-05	-7	16	03-98	-19	-41	-37	-38	-32	-21	-36	-12	-12	-16	-13	-8
	NL	-27	12-03	28	57	06-99	-10	-11	-4	-11	-4	-10	-9	-9	0	-1	12	18
	AT	-36	04-03	-11	13	07-00	-13	-19	-11	-19	-15	-9	-13	-6	-4	-9	-7	3
	PL	-36	01-01	-13	20	02-98	-8	-15	-12	-10	-6	-5	-4	-2	-4	2	-4	2
	PT	-46	01-03	-21	3	07-99	-32	-26	-23	-28	-24	-31	-31	-32	-31	-36	-25	-18
	SI	2	04-02	18	44	01-99	17	11	15	13	13	17	14	16	13	18	18	24
	SK	-35	06-95	11	58	11-98	-2	-1	19	10	11	10	14	26	17	35	37	24
FI	-15	11-00	8	40	05-04	4	9	9	16	24	19	14	29	25	26	23	16	
SE	-21	10-96	9	47	01-06	9	3	-1	-2	9	9	17	26	26	32	43	47	
UK	-57	09-92	-6	42	06-04	-8	-14	-22	-27	-34	-41	-29	-31	-26	-45	-34	-17	
VOLUME OF STOCKS	EU	11	01-91	16	22	03-02	14	15	16	13	16	16	14	15	14	17	18	15
	Euro area	7	01-91	16	23	10-96	13	13	14	11	14	15	13	15	13	16	16	14
Component of the retail confidence indicator	BE	-5	09-90	13	32	03-92	8	15	12	12	9	21	10	7	1	9	10	7
	CZ	0	03-00	10	27	05-95	13	13	17	13	14	12	13	14	14	10	8	12
	DK	-1	04-98	18	32	04-00	13	14	15	15	16	13	19	20	20	14	13	18
	DE	4	02-91	26	43	02-02	18	22	23	15	23	24	19	28	26	28	32	27
	EE	3	07-05	11	18	07-04	16	13	13	10	8	3	6	7	8	10	5	6
	EL	-7	11-02	13	41	12-93	18	21	20	25	16	16	15	14	15	16	11	6
	ES	-8	02-96	5	16	07-92	8	8	6	5	5	9	9	8	7	8	3	5
	FR	-3	10-93	11	21	09-98	14	8	8	8	6	10	10	10	9	10	10	11
	IE	-5	06-00	10	25	08-98	10	9	7	9	6	6	5	9	8	7	8	16
	IT	-8	10-99	8	43	10-96	3	1	5	5	11	2	0	-1	-3	6	4	-2
	CY	-15	04-05	-6	6	03-05	-1	6	-15	-14	-4	-7	-5	-11	-13	-13	-13	-9
	LV	-18	07-96	-4	8	12-02	0	0	3	3	1	0	-1	3	-1	3	2	3
	LT	-21	12-99	-1	13	10-96	2	13	-2	-1	-3	-6	-1	0	-1	1	1	2
	HU	4	02-96	22	33	01-99	23	21	17	24	21	16	16	23	19	14	18	25
	NL	5	07-97	12	19	06-05	16	17	16	16	19	16	16	15	16	15	12	14
	AT	-2	01-00	25	36	01-96	25	25	21	24	22	28	24	26	20	19	21	20
	PL	-9	09-03	-1	7	05-05	5	4	5	7	6	5	5	5	4	5	5	4
	PT	-3	12-03	9	25	06-90	2	2	3	5	5	4	12	11	10	14	9	7
	SI	-1	07-05	16	33	01-99	14	13	11	8	7	-1	4	4	3	1	1	1
	SK	-5	06-00	10	26	02-95	14	7	7	3	4	5	2	4	2	2	2	2
FI	20	01-06	29	40	08-00	29	29	30	28	25	26	32	32	20	21	23	20	
SE	18	04-00	31	44	02-98	29	30	30	29	28	26	22	24	25	26	28	25	
UK	4	04-93	19	33	02-91	16	24	26	21	25	26	22	17	18	22	25	20	

TABLE 5 (continued): Monthly survey of retail trade (s.a.)<sup>(a)(b)</sup>

		Since 01/1990						2005										2006	
		Min.		Ave.		Max.		Feb.	Mar.	Apr.	May	June	July	Aug.	Sep.	Oct.	Nov.	Dec.	Jan.
		Value	Date	Value	Date	Value	Date												
EXPECTED BUSINESS SITUATION	EU	-20	01-93	2	18	06-00	3	0	1	-1	-1	-4	0	3	7	5	7	7	
	Euro area	-26	02-93	-2	17	06-00	2	-1	1	1	2	-3	1	5	12	9	9	7	
Component of the retail confidence indicator	BE	-23	04-03	2	22	04-98	7	1	3	-5	0	3	-13	-3	1	-6	-2	1	
	CZ	2	09-00	23	46	02-02	22	21	22	18	21	18	18	30	31	31	20	21	
	DK	8	10-01	41	71	07-94	53	58	54	51	47	45	49	46	54	48	52	48	
	DE	-42	10-02	-8	26	12-90	-14	-30	-26	-25	-17	-27	-23	-21	-5	-14	-18	-4	
	EE	4	04-03	28	62	01-03	41	43	46	42	34	35	31	29	35	34	34	27	
	EL	-4	05-95	26	60	06-00	22	32	40	30	22	21	27	33	30	28	36	35	
	ES	-34	02-93	14	34	04-91	5	20	27	26	18	17	20	15	18	26	14	5	
	FR	-64	02-93	-22	19	10-04	5	7	10	6	-3	-4	1	7	9	14	9	-7	
	IE	-31	07-03	12	44	11-97	-9	0	-14	-6	7	-2	5	-16	-12	6	11	8	
	IT	-20	03-93	18	59	06-96	30	20	15	29	37	32	38	49	53	43	55	42	
	CY	-13	06-02	9	28	03-05	8	28	26	5	12	15	11	8	15	6	3	9	
	LV	2	01-04	19	36	09-99	19	18	20	23	18	26	25	23	26	29	24	24	
	LT	-35	09-00	-2	45	03-04	17	4	-3	0	12	20	21	18	20	38	36	38	
	HU	-25	08-05	6	39	02-98	-18	-22	-17	-22	-21	-13	-25	-5	-6	-5	-4	-7	
	NL	-5	12-03	19	41	10-99	-3	9	9	-1	-2	-3	-4	4	7	8	20	18	
	AT	-24	03-03	-3	15	07-00	-4	14	5	-4	-5	-1	-1	4	0	1	4	4	
	PL	-33	12-01	-7	17	07-98	-6	-4	-6	-6	-6	-7	-6	-7	-5	-1	-4	-10	
	PT	-26	01-03	7	39	01-90	5	8	5	3	-9	-16	-13	-13	-10	-8	2	6	
	SI	15	02-03	32	47	04-99	27	26	37	35	34	35	38	36	38	40	35	39	
	SK	-14	11-94	23	60	12-96	30	45	32	30	54	42	23	23	32	33	37	19	
FI	-4	04-03	10	39	05-97	1	9	17	16	19	18	22	22	25	21	18	23		
SE	19	10-01	42	67	04-00	26	26	33	24	29	39	40	39	42	47	48	60		
UK	-29	11-05	11	40	01-97	-2	-3	-8	-19	-26	-23	-13	-18	-26	-29	-11	-4		
INTENTIONS OF PLACING ORDERS	EU	-16	10-02	-3	13	01-90	-3	-8	-8	-10	-7	-8	-6	-4	-4	-6	-5	-2	
	Euro area	-23	10-02	-5	14	01-90	-3	-8	-9	-10	-5	-8	-5	-3	-2	-3	-3	-4	
BE	-27	05-93	-7	15	03-90	-7	-8	-8	-7	-6	-7	-10	-9	-2	-5	-6	-3		
CZ	-34	02-96	29	56	02-95	22	14	16	16	13	10	26	27	27	23	19	29		
DK	-12	10-01	19	58	07-94	28	27	23	28	22	17	26	27	25	29	27	20		
DE	-51	09-02	-15	21	02-91	-15	-27	-28	-32	-23	-27	-24	-23	-23	-24	-29	-16		
EE	-3	03-03	18	33	01-03	23	29	29	24	29	29	21	14	17	26	28	23		
EL	-23	04-93	10	38	06-96	2	15	14	9	-3	-10	2	14	5	11	17	16		
ES	-31	02-93	5	21	01-90	-3	1	11	11	9	12	11	6	3	1	5	0		
FR	-37	12-92	-14	11	10-99	-3	-3	-2	-8	-6	-11	-8	-4	-4	-4	-2	-10		
IE	-43	05-03	-5	27	08-00	-18	-13	-11	-7	2	-13	1	-18	-19	-7	-10	-13		
IT	-25	10-97	22	69	04-92	35	18	7	22	34	34	37	47	53	47	44	30		
CY	-44	06-02	-9	10	02-04	-15	1	4	-2	-9	7	-2	-6	-6	3	-7	-10		
LV	-4	10-96	9	27	03-02	11	16	13	19	14	25	18	18	21	23	14	17		
LT	-23	01-03	7	51	07-04	23	5	14	1	4	14	25	23	27	48	43	32		
HU	-29	03-05	-2	23	05-98	-25	-29	-18	-26	-21	-22	-26	-13	-17	-9	-11	-17		
NL	-22	09-03	3	25	08-99	-17	-10	-7	-16	-14	-19	-17	-11	-9	-9	0	-1		
AT	-42	03-99	-31	-16	06-00	-28	-27	-22	-26	-23	-21	-24	-23	-25	-26	-23	-25		
PL	-30	12-01	-6	13	12-98	-6	-2	-7	-5	-6	-6	-8	-8	-3	-3	-6	-9		
PT	-41	01-03	-13	12	11-98	-3	-6	-13	-23	-19	-20	-27	-30	-25	-25	-2	-12		
SI	-2	10-01	15	30	10-00	10	6	13	19	13	21	14	17	19	23	21	19		
SK	-19	03-96	34	78	01-02	37	51	47	53	54	60	32	33	33	41	36	18		
FI	-20	07-03	-6	12	01-06	-4	4	4	11	3	2	7	4	8	7	11	12		
SE	-17	10-01	14	52	03-00	6	3	5	0	0	9	5	11	18	18	21	28		
UK	-37	03-91	3	34	08-96	-9	-12	-12	-20	-22	-21	-18	-19	-25	-30	-22	-3		
EMPLOYMENT EXPECTATIONS	EU	-13	12-92	-1	9	08-00	-1	0	-1	1	0	-1	-2	0	0	-4	-2	0	
	Euro area	-11	12-92	-1	10	08-00	0	1	1	4	5	2	0	2	3	-2	2	4	
BE	-13	12-92	3	16	04-90	9	4	2	4	8	6	7	10	8	3	-1	6		
CZ	-37	01-95	1	22	05-02	8	8	1	6	-2	-4	8	11	11	15	10	15		
DK	-8	05-01	8	28	05-00	9	16	12	15	10	14	15	20	13	16	14	13		
DE <sup>(c)</sup>	-32	01-03	-8	15	03-98	-10	-12	-10	-7	-8	-6	-6	-4	-10	-11	-4	-1		
EE	-8	05-02	3	14	12-05	7	8	10	13	4	5	-1	4	8	9	14	13		
EL	-12	07-05	27	62	03-98	2	0	8	0	-9	-12	-5	2	-10	-10	21	5		
ES	-19	09-93	0	8	12-98	4	5	3	4	3	2	3	2	4	1	2	4		
FR	-14	06-91	-2	12	10-00	1	0	3	1	0	-3	-2	2	4	0	-2	0		
IE	-17	05-03	2	22	03-98	-6	1	-3	-2	0	-7	-4	-1	-12	-6	-4	2		
IT	-34	02-97	11	54	02-00	21	31	26	42	47	32	16	24	38	19	22	27		
CY	-4	07-02	0	5	10-05	0	-2	1	-1	1	1	-1	0	5	0	0	0		
LV	-23	04-96	0	17	01-06	10	9	5	9	9	14	14	13	8	15	12	17		
LT	-48	07-95	-9	68	10-05	60	48	47	42	42	52	63	64	68	68	54	59		
HU	-36	05-96	-9	5	11-03	-13	-19	-15	-18	-16	-16	-19	-13	-15	-9	-7	-9		
NL	-6	08-05	2	13	06-99	-3	-2	-2	-4	-3	-6	-6	-5	-3	-4	-1	-2		
AT	-20	03-99	-5	71	01-96	-7	-6	-7	-7	-6	-7	-4	-6	-7	-9	-4	-10		
PL	-28	12-01	-12	2	07-97	-7	-7	-9	-8	-8	-8	-10	-6	-6	-6	-5	-6		
PT	-23	05-03	-5	13	09-97	-11	-11	-9	-11	-12	-11	-14	-19	-20	-19	-20	-19		
SI	-46	02-99	-9	11	06-04	-13	-13	-4	-13	-5	-8	-10	5	-9	-7	-8	-9		
SK	-71	12-93	-8	31	09-02	-13	-17	-9	-3	0	-1	1	2	-2	6	14	10		
FI	-16	07-03	-3	10	05-04	-2	-2	-4	-3	2	1	-1	-6	2	2	0	5		
SE	-34	10-96	-4	23	06-00	-19	-15	-14	-19	-16	-17	-11	-9	-8	-7	-2	-1		
UK	-32	12-91	-2	25	10-97	-7	-2	-6	-15	-18	-14	-10	-10	-16	-19	-19	-17		

(a) United Kingdom: refers to the volume of sales for the time of the year.

(b) The indicator is the arithmetic average of the balances (%) for the present and the future business situation, and for stocks – with inverted sign.

(c) Quarterly data, seasonally adjusted monthly.



TABLE 6: Monthly survey of construction industry (s.a.)<sup>(a)</sup>

		Since 01/1985						2005									2006		
		Min.		Ave.		Max.													
		Value	Date	Value	Date	Value	Date	Feb.	Mar.	Apr.	May	June	July	Aug.	Sep.	Oct.	Nov.	Dec.	Jan.
CONSTRUCTION CONFIDENCE INDICATOR	<b>EU</b>	-42	10-93	-20	3	02-90		-10	-10	-11	-11	-12	-11	-9	-7	-7	-3	-5	-4
	<b>Euro area</b>	-44	08-96	-20	4	03-90		-12	-12	-12	-12	-13	-12	-9	-8	-8	-3	-6	-4
	<b>BE</b>	-35	11-95	-12	10	02-00		-6	-4	-6	-5	-6	-5	-6	-4	-3	-1	-3	1
	<b>CZ</b>	-64	06-99	-18	3	06-95		-4	-7	-9	-8	-10	-7	-7	-1	0	-2	-8	-9
	<b>DK</b>	-37	12-91	-8	21	01-06		4	3	5	8	6	5	3	5	14	16	18	21
	<b>DE</b>	-62	11-02	-36	3	01-91		-55	-51	-50	-47	-45	-44	-43	-38	-38	-35	-35	-32
	<b>EE</b>	-46	12-99	4	46	12-05		28	31	32	33	30	29	33	27	29	38	46	45
	<b>EL</b>	-53	03-05	-12	33	04-00		-48	-53	-48	-31	-38	-49	-47	-45	-40	-36	-34	-30
	<b>ES</b>	-57	10-92	-2	42	01-99		26	28	20	15	10	17	25	26	23	39	23	21
	<b>FR</b>	-60	03-93	-16	34	10-00		11	11	8	7	5	9	7	8	12	13	10	14
	<b>IE</b>	-54	09-02	10	58	06-97		12	27	29	15	45	34	20	28	24	31	13	13
	<b>IT</b>	-68	10-93	-13	21	05-90		2	-5	-3	-1	-5	-8	-3	-5	-10	-6	-2	3
	<b>CY</b>	-32	12-05	10	35	12-03		10	7	9	8	-4	-7	-7	-2	-4	-14	-32	3
	<b>LV</b>	-64	07-93	-27	13	11-05		-2	3	3	3	5	5	6	7	7	13	10	10
	<b>LT</b>	-76	09-00	-40	7	12-05		-5	-2	-22	-11	-4	1	1	2	1	7	7	6
	<b>LU</b>	-73	03-94	-26	24	03-90		-22	-29	-20	-21	-26	-33	-26	-32	-22	-20	-22	-19
	<b>HU</b>	-24	12-04	-8	11	09-98		-20	-17	-17	-17	-21	-15	-16	-9	-13	-10	-15	-16
	<b>NL</b>	-25	05-03	-3	27	12-00		-5	-2	-1	-1	1	1	4	6	4	6	3	3
	<b>AT</b>	-60	04-96	-29	-12	01-06		-22	-24	-24	-20	-16	-23	-18	-14	-13	-14	-12	-12
	<b>PL</b>	-63	12-02	-42	-21	11-05		-32	-30	-29	-29	-31	-29	-28	-27	-24	-21	-25	-21
<b>PT</b>	-56	02-03	-26	-1	12-97		-40	-34	-39	-34	-42	-44	-39	-41	-31	-38	-39	-35	
<b>SI</b>	-33	06-02	-8	6	01-05		2	2	-2	-4	-7	-8	-9	-8	-11	-10	-10	-16	
<b>SK</b>	-86	07-99	-27	18	03-97		-17	-13	-11	-11	-9	-7	-10	-9	-11	-5	-6	-10	
<b>FI</b>	-97	09-91	-17	48	06-98		12	16	21	13	14	21	22	10	10	12	19	22	
<b>SE</b>	-83	12-93	-36	27	01-06		3	-3	6	6	15	27	8	21	14	15	19	27	
<b>UK</b>	-79	06-91	-20	5	08-04		-3	-2	-7	-10	-12	-12	-11	-10	-5	-9	-8	-9	
ORDER BOOKS	<b>EU</b>	-55	08-93	-29	-2	03-90		-15	-15	-19	-17	-19	-18	-17	-15	-14	-9	-12	-10
	<b>Euro area</b>	-55	08-93	-27	-3	03-90		-15	-15	-19	-17	-19	-18	-16	-14	-14	-7	-11	-8
Component of the construction confidence indicator	<b>BE</b>	-48	02-96	-23	2	02-00		-16	-12	-15	-15	-16	-14	-14	-14	-15	-12	-13	-6
	<b>CZ</b>	-72	06-99	-22	9	12-02		-4	-7	-13	-12	-13	-13	-8	-3	-3	-9	-22	-10
	<b>DK</b>	-49	12-91	-11	33	03-95		3	4	6	10	10	8	6	5	15	17	20	29
	<b>DE</b>	-71	10-02	-46	-7	03-91		-66	-61	-63	-59	-59	-58	-54	-52	-47	-43	-47	-41
	<b>EE</b>	-67	12-99	-3	52	01-06		26	30	35	40	35	30	33	26	25	38	49	52
	<b>EL</b>	-77	06-95	-37	16	04-00		-61	-63	-60	-48	-59	-61	-63	-66	-63	-63	-65	-71
	<b>ES</b>	-64	08-93	2	54	11-05		50	45	31	37	28	29	27	35	29	54	37	42
	<b>FR</b>	-74	09-93	-23	37	10-00		10	8	1	-1	-1	3	0	0	8	6	2	7
	<b>IE</b>	-61	06-94	4	68	06-97		-9	28	25	21	37	23	19	33	14	21	12	-3
	<b>IT</b>	-84	02-94	-24	17	05-90		-3	-10	-10	-11	-15	-15	-11	-9	-19	-8	-3	-3
	<b>CY</b>	-33	12-05	5	41	12-03		5	-5	4	-5	-6	-9	-9	-3	-10	-6	-33	0
	<b>LV</b>	-84	01-96	-50	-4	11-05		-17	-14	-12	-11	-8	-9	-7	-11	-10	-4	-5	-4
	<b>LT</b>	-96	09-00	-63	-3	01-06		-30	-26	-28	-37	-21	-16	-13	-15	-14	-13	-12	-3
	<b>LU</b>	-73	08-93	-28	12	03-90		-28	-32	-24	-21	-24	-37	-21	-40	-25	-22	-21	-11
	<b>HU</b>	-35	12-04	-17	3	09-98		-33	-30	-28	-28	-33	-26	-25	-15	-22	-19	-24	-21
	<b>NL</b>	-30	09-93	-8	20	09-00		-13	-9	-7	-4	-5	-3	-1	2	-2	0	-2	-2
	<b>AT</b>	-65	04-96	-40	-18	12-05		-38	-38	-36	-33	-30	-35	-29	-23	-21	-22	-18	-28
	<b>PL</b>	-99	12-02	-67	-32	12-01		-62	-60	-59	-60	-59	-56	-56	-54	-53	-48	-54	-49
	<b>PT</b>	-79	05-94	-44	-9	12-97		-61	-57	-56	-55	-62	-60	-57	-63	-58	-54	-53	-49
	<b>SI</b>	-42	06-02	-14	3	08-04		0	-5	-9	-11	-13	-21	-27	-19	-28	-21	-21	-27
<b>SK</b>	-93	03-94	-44	-5	03-97		-29	-25	-23	-26	-23	-26	-34	-21	-30	-17	-16	-20	
<b>FI</b>	-99	12-93	-24	38	06-98		9	7	10	5	9	12	21	11	10	11	16	28	
<b>SE</b>	-97	05-97	-48	33	01-90		-5	-10	-2	-5	13	5	14	11	6	14	15	15	
<b>UK</b>	-87	06-91	-34	-3	01-90		-10	-11	-18	-19	-24	-23	-23	-21	-17	-19	-18	-21	
EMPLOYMENT EXPECTATIONS	<b>EU</b>	-34	04-96	-11	9	02-90		-6	-5	-3	-5	-4	-3	-1	0	1	2	1	2
	<b>Euro area</b>	-38	04-96	-12	11	02-90		-8	-8	-5	-7	-6	-5	-2	-1	-1	1	0	1
Component of the construction confidence indicator	<b>BE</b>	-24	11-95	-1	19	02-90		3	5	4	5	3	5	2	6	8	10	7	8
	<b>CZ</b>	-57	06-99	-13	12	06-95		-3	-7	-4	-4	-6	-1	-5	1	2	6	5	-8
	<b>DK</b>	-31	09-91	-5	42	03-98		5	3	3	6	2	2	-1	5	12	14	16	12
	<b>DE</b>	-59	03-96	-27	19	02-90		-43	-41	-36	-35	-32	-30	-32	-25	-29	-26	-23	-23
	<b>EE</b>	-45	03-99	10	68	01-97		30	33	30	27	25	27	33	29	34	38	42	38
	<b>EL</b>	-64	09-04	13	60	03-99		-34	-42	-36	-14	-18	-37	-31	-25	-18	-8	-3	10
	<b>ES</b>	-66	03-93	-5	54	01-99		2	11	8	-6	-9	4	22	17	17	24	9	0
	<b>FR</b>	-51	03-93	-9	31	10-00		13	14	16	15	12	16	14	16	16	21	18	20
	<b>IE</b>	-50	09-02	16	61	07-04		32	26	34	9	54	44	21	23	35	41	14	29
	<b>IT</b>	-60	10-93	-2	31	06-04		8	-1	5	9	5	-1	6	0	-2	-4	-1	9
	<b>CY</b>	-30	12-05	15	48	11-03		16	19	14	20	-2	-5	-5	-2	3	-23	-30	7
	<b>LV</b>	-45	07-93	-5	30	11-05		13	20	18	18	18	18	19	25	23	30	24	23
	<b>LT</b>	-56	09-00	-17	37	03-03		20	21	-15	16	13	17	15	19	16	27	26	15
	<b>LU</b>	-77	02-94	-24	36	03-90		-15	-26	-16	-21	-28	-29	-30	-25	-18	-17	-24	-26
	<b>HU</b>	-13	12-04	2	21	01-98		-7	-5	-5	-7	-8	-4	-7	-4	0	0	-6	-12
	<b>NL</b>	-26	05-03	2	36	12-00		3	4	6	2	6	4	8	11	9	12	9	8
	<b>AT</b>	-76	02-01	-18	14	02-03		-5	-9	-12	-7	-3	-10	-7	-4	-5	-6	-7	5
	<b>PL</b>	-49	04-02	-13	18	05-96		-2	-1	2	1	-3	-2	-1	1	4	5	3	6
	<b>PT</b>	-47	02-03	-8	19	09-97		-19	-12	-22	-13	-23	-29	-22	-18	-4	-23	-24	-21
	<b>SI</b>	-23	06-02	-2	10	08-05		3	9	5	2	0	5	10	4	6	0	1	-5
<b>SK</b>																			

TABLE 6 (continued): Monthly survey of construction industry (s.a.)<sup>(a)</sup>

		Since 01/1985						2005										2006	
		Min.		Ave.		Max.		Feb.	Mar.	Apr.	May	June	July	Aug.	Sep.	Oct.	Nov.	Dec.	Jan.
		Value	Date	Value	Date	Value	Date												
TREND OF	<b>EU</b>	-36	03-93	-8	15	03-90	1	-8	-4	4	1	3	6	6	7	8	9	9	
ACTIVITY	<b>Euro area</b>	-40	03-93	-8	17	03-90	0	-10	-5	4	0	3	6	5	5	8	9	8	
COMPARED WITH	<b>BE</b>	-37	03-91	-4	36	02-90	3	-14	0	10	-7	1	0	-2	1	-2	2	1	
PRECEDING	<b>CZ</b>	-34	06-99	25	77	01-05	61	50	41	36	34	40	40	41	48	42	60	60	
MONTHS	<b>DK</b>	-21	04-03	-2	19	01-98	9	8	8	8	9	4	5	7	12	15	12	19	
	<b>DE</b>	-44	03-96	-19	19	03-90	-29	-39	-25	-14	-21	-18	-13	-15	-14	-6	-12	-15	
	<b>EE</b>	-25	03-99	19	48	01-06	46	38	32	38	33	19	22	24	23	24	45	48	
	<b>EL</b>	-50	04-05	5	61	06-98	-35	-44	-50	-23	-15	-27	-33	-41	-39	-19	-22	-20	
	<b>ES</b>	-49	07-97	7	59	01-99	16	5	23	38	32	30	40	38	43	38	46	41	
	<b>FR</b>	-64	09-93	-8	42	07-00	19	13	10	8	11	19	15	14	18	20	21	24	
	<b>IE</b>	-45	09-91	4	47	05-96	-7	15	6	0	-5	27	17	-12	15	23	30	17	
	<b>IT</b>	-50	03-93	-2	26	07-04	11	3	2	7	-3	1	5	7	-7	-5	1	-3	
	<b>CY</b>	-29	09-04	5	78	09-02	4	1	34	-7	-13	-6	-10	50	-24	-20	-14	0	
	<b>LV</b>	-47	04-96	-1	44	06-02	19	21	25	24	25	24	19	22	19	24	27	23	
	<b>LT</b>	-61	03-00	-3	81	06-02	23	-7	10	18	19	19	14	27	27	30	36	50	
	<b>LU</b>	-68	10-02	-23	30	04-91	-9	-32	-41	-32	-25	-28	-28	-35	-38	-20	-21	-12	
	<b>HU</b>	-37	03-03	-8	14	03-99	-19	-20	-12	-12	-17	-8	-6	1	3	3	-6	-9	
	<b>NL</b>	-41	02-96	-2	37	03-97	2	-5	1	5	5	7	8	10	5	4	4	4	
	<b>AT</b>	-87	04-96	-7	27	01-04	-16	-38	-28	-7	1	-7	12	10	7	12	15	10	
	<b>PL</b>	-30	01-02	9	42	01-05	23	0	-3	4	8	13	13	20	22	26	27	37	
	<b>PT</b>	-37	09-03	-9	24	05-97	-12	-24	-29	-19	-27	-34	-28	-26	-20	-19	-29	-13	
	<b>SI</b>	-17	08-05	8	33	02-04	3	1	-4	-7	-3	-17	-17	-7	-1	-10	-4	-13	
	<b>SK</b>	-43	06-99	7	53	12-04	3	-6	0	18	24	27	25	26	27	29	41	23	
	<b>FI</b>	-88	09-91	6	75	01-98	29	25	11	10	23	21	37	33	31	39	29	33	
	<b>SE</b>	-67	12-91	-10	59	01-06	13	12	11	20	34	50	41	45	50	42	41	59	
	<b>UK</b>	-69	06-91	-6	16	02-04	2	-1	-6	-1	-2	-6	-5	-2	3	-4	-5	3	
PRICE	<b>EU</b>	-22	03-93	0	24	02-90	4	2	4	2	1	2	6	7	7	8	9	8	
EXPECTATIONS	<b>Euro area</b>	-27	04-96	-2	31	04-90	-1	-2	0	-2	-1	-1	2	3	3	3	5	3	
	<b>BE</b>	-22	01-96	-1	29	01-90	-2	-1	1	-1	-1	3	4	7	5	9	9	12	
	<b>CZ</b>	-39	08-00	41	80	02-95	22	23	18	14	21	16	26	23	23	18	20	20	
	<b>DK</b>	-36	03-03	-16	6	01-06	-6	-6	-5	-5	-7	-7	-6	-4	4	4	4	6	
	<b>DE</b>	-45	03-96	-13	45	02-90	-21	-25	-18	-19	-20	-21	-16	-15	-15	-11	-12	-10	
	<b>EE</b>	-29	09-99	32	88	04-94	41	43	38	42	58	56	59	67	65	67	66	66	
	<b>EL</b>	-39	06-05	6	35	06-95	-30	-28	-38	-39	-39	-19	-17	-15	2	-8	-12	-15	
	<b>ES</b>	-20	10-93	18	71	10-00	20	20	23	20	23	29	31	28	28	13	24	14	
	<b>FR</b>	-60	03-93	-16	32	10-00	0	1	-4	-6	-8	-6	-1	0	-2	0	4	1	
	<b>IE</b>	-66	07-03	6	58	03-00	-10	-1	8	5	11	11	-1	10	-9	10	18	5	
	<b>IT</b>	-16	07-93	17	63	06-90	16	12	17	13	16	9	8	14	5	12	9	7	
	<b>CY</b>	-1	07-05	31	76	06-04	17	21	12	7	1	-1	27	3	10	10	0	31	
	<b>LV</b>	-11	03-01	27	74	12-05	60	48	59	54	53	57	61	71	72	69	74	66	
	<b>LT</b>	-5	03-01	36	89	01-95	46	42	42	49	39	53	43	72	53	52	49	43	
	<b>LU</b>	-67	05-93	-28	29	11-00	-35	-37	-29	-42	-48	-42	-42	-35	-29	-26	-16	-17	
	<b>HU</b>	-8	01-06	10	32	03-01	1	4	6	5	-1	1	3	6	7	7	2	-8	
	<b>NL</b>	-7	01-04	25	69	04-01	11	14	16	17	21	20	24	28	27	22	28	34	
	<b>AT</b>	-53	04-96	-11	18	06-91	0	-1	1	-3	-4	-5	-3	0	7	6	1	8	
	<b>PL</b>	-27	03-02	16	45	05-96	9	7	5	1	1	2	4	6	7	9	9	10	
	<b>PT</b>	-40	05-03	0	48	06-90	-10	-7	-23	-10	-23	-21	-10	-17	-17	-25	-23	-21	
	<b>SI</b>	-6	05-02	5	16	05-04	5	3	3	5	-2	1	0	5	9	4	1	2	
	<b>SK</b>	-20	08-00	53	93	06-97	25	22	28	27	31	30	32	34	37	28	34	31	
	<b>FI</b>	-45	06-91	9	65	05-97	13	9	29	16	27	12	18	12	27	18	21	21	
	<b>SE</b>	-75	06-91	-15	33	01-01	7	5	12	23	19	-17	24	17	14	28	23	24	
	<b>UK</b>	-56	12-90	15	43	08-04	33	25	26	23	15	25	25	24	28	36	31	36	

(a) The indicator is the average of the balances (%) for the questions on order-books and employment expectations.

**TABLE 7a: Manufacturing industry; future Member States (s.a.)<sup>(a)</sup>**  
Balances: i.e.differences between the percentages of respondents giving positive and negative replies (s.a.)

		Since 01/1990						2005										2006	
		Min.		Ave.		Max.													
		Value	Date	Value	Date	Value	Date	Feb.	Mar.	Apr.	May	June	July	Aug.	Sep.	Oct.	Nov.	Dec.	Jan.
CONFIDENCE INDICATOR	<b>BG</b>	-30	06-93	-8	8	11-95		2	0	2	3	2	2	2	0	1	1	1	-1
	<b>RO</b>	-22	09-92	-1	28	06-96		2	4	-3	-1	-3	-1	0	-2	0	3	2	2
PRODUCTION EXPECTATIONS	<b>BG</b>	-17	02-97	21	42	11-95		30	29	32	32	32	31	29	23	26	30	26	21
	<b>RO</b>	-8	07-92	23	52	03-03		29	30	20	19	14	17	17	21	22	26	24	21
ORDER BOOKS	<b>BG</b>	-65	06-93	-43	-19	10-00		-31	-33	-34	-31	-34	-33	-31	-32	-32	-36	-37	-39
	<b>RO</b>	-53	06-99	-16	50	06-96		-12	-11	-16	-16	-16	-18	-13	-18	-15	-15	-15	-13
STOCKS OF FINISHED PRODUCTS <sup>(b)</sup>	<b>BG</b>	-22	06-97	2	35	08-93		-7	-5	-7	-7	-6	-9	-9	-10	-10	-10	-14	-15
	<b>RO</b>	-4	06-96	10	51	07-92		11	7	13	6	6	3	3	8	8	2	4	4

(a) The confidence indicator is the arithmetic average of the three components (the last with inverted sign).  
(b) Highest figure is considered as minimum, lowest figure is considered as maximum.

**TABLE 7b: Services<sup>(a)</sup>**

		Since 01/1990						2005										2006	
		Min.		Ave.		Max.													
		Value	Date	Value	Date	Value	Date	Feb.	Mar.	Apr.	May	June	July	Aug.	Sep.	Oct.	Nov.	Dec.	Jan.
CONFIDENCE INDICATOR	<b>BG</b>	15	03-03	28	42	06-02		26	29	28	31	35	30	23	24	22	26	24	22
	<b>RO<sup>(n)</sup></b>	-1	06-05	28	54	06-04		32	26	20	21	-1	19	18	19	19	21	29	30
ASSESSMENT OF BUSINESS CLIMATE	<b>BG</b>	16	12-04	29	66	05-02		16	25	26	26	43	32	21	22	16	19	19	18
	<b>RO<sup>(n)</sup></b>	3	06-05	37	63	04-03		29	29	13	31	3	17	23	18	23	26	44	29
EVOLUTION OF DEMAND IN RECENT MONTHS	<b>BG</b>	-1	05-02	17	36	03-04		12	16	14	19	17	23	16	23	12	20	16	18
	<b>RO<sup>(n)</sup></b>	-15	06-02	21	53	06-04		36	30	26	22	-6	10	13	27	18	17	20	36
EVOLUTION OF DEMAND IN THE MONTHS AHEAD	<b>BG</b>	16	03-03	38	59	05-02		48	45	46	47	44	37	31	28	38	40	37	31
	<b>RO<sup>(n)</sup></b>	-7	06-02	25	50	06-04		32	19	21	11	0	31	17	12	17	19	24	25

(a) The confidence indicator is the arithmetic average of the three components.  
(n) Not seasonally adjusted.

**TABLE 7c: Consumer opinion and financial condition; future Member States (a)**

		Since 01/1990						2005										2006	
		Min.		Ave.		Max.													
		Value	Date	Value	Date	Value	Date	Feb.	Mar.	Apr.	May	June	July	Aug.	Sep.	Oct.	Nov.	Dec.	Jan.
CONFIDENCE INDICATOR	<b>BG<sup>(n)</sup></b>	-39	08-03	-28	-14	08-01		-26	-23	-26	-22	-19	-23	-26	-26	-32	-27	-30	-30
	<b>RO<sup>(n)</sup></b>	-33	07-02	-24	-13	01-05		-18	-20	-22	-22	-21	-24	-25	-25	-26	-26	-28	-30
FINANCIAL SITUATION OVER NEXT 12 MONTHS	<b>BG<sup>(n)</sup></b>	-23	07-03	-12	3	07-01		-9	-8	-9	-6	-4	-6	-11	-12	-19	-12	-16	-17
	<b>RO<sup>(n)</sup></b>	-14	07-02	-3	9	11-04		5	3	-1	1	1	-1	-2	-2	-3	-4	-4	-7
GEN. ECON. SITUATION OVER NEXT 12 MONTHS	<b>BG<sup>(n)</sup></b>	-25	08-03	-9	16	07-01		-4	0	-3	0	2	-3	-12	-10	-24	-14	-16	-21
	<b>RO<sup>(n)</sup></b>	-14	01-06	-2	12	01-05		8	6	1	-1	1	-7	-3	-7	-6	-5	-11	-14
SAVINGS OVER NEXT 12 MONTHS	<b>BG<sup>(n)</sup></b>	-81	03-02	-74	-63	11-05		-74	-73	-74	-69	-68	-71	-67	-69	-67	-63	-68	-66
	<b>RO<sup>(n)</sup></b>	-63	12-03	-54	-46	12-04		-52	-49	-53	-52	-50	-48	-56	-54	-52	-55	-55	-57
UNEMPLOYMENT OVER NEXT 12 MONTHS	<b>BG<sup>(n)</sup></b>	2	07-01	19	31	03-02		17	12	17	11	7	14	14	14	20	16	20	19
	<b>RO<sup>(n)</sup></b>	24	11-04	38	51	01-02		31	39	35	36	37	40	39	37	42	41	42	42

(a) The confidence indicator is the average of the four components.  
(n) Not seasonally adjusted.

**TABLE 7d: Retail trade (s.a.)<sup>(a)</sup>**

		Since 01/1990						2005										2006	
		Min.		Ave.		Max.													
		Value	Date	Value	Date	Value	Date	Feb.	Mar.	Apr.	May	June	July	Aug.	Sep.	Oct.	Nov.	Dec.	Jan.
CONFIDENCE INDICATOR	<b>BG</b>	5	11-00	18	32	06-00		9	10	11	15	11	13	15	14	11	10	12	10
	<b>RO</b>	1	06-99	16	36	12-97		17	19	18	17	17	18	21	17	17	20	19	21
PRESENT BUSINESS SITUATION	<b>BG</b>	-3	09-96	22	54	11-97		5	2	8	15	11	14	19	15	15	13	9	7
	<b>RO</b>	-1	02-03	28	58	09-97		23	18	18	26	26	24	31	20	21	24	28	33
VOLUME OF STOCKS	<b>BG</b>	-55	03-97	-18	12	11-00		-5	-6	-5	-6	-1	-2	-2	-4	-2	-3	-6	-4
	<b>RO</b>	-20	12-94	4	55	10-95		-2	-1	0	3	4	2	2	2	4	3	6	2
EXPECTED BUSINESS SITUATION	<b>BG</b>	-33	02-97	16	43	03-00		16	21	20	25	20	22	22	22	17	16	21	18
	<b>RO</b>	-37	10-94	24	74	11-95		28	38	35	27	28	32	33	32	36	38	35	31

(a) The confidence indicator is the arithmetic average of the three components (for stocks, with inverted sign).

**TABLE 7e: Construction industry; future Member States (s.a.)<sup>(a)</sup>**

		Since 01/1990						2005										2006	
		Min.		Ave.		Max.													
		Value	Date	Value	Date	Value	Date	Feb.	Mar.	Apr.	May	June	July	Aug.	Sep.	Oct.	Nov.	Dec.	Jan.
CONFIDENCE INDICATOR	<b>BG</b>	-56	03-93	-27	6	07-05		-6	1	1	-1	1	6	-3	-3	-2	-2	-1	-2
	<b>RO</b>	-60	09-99	-9	35	06-96		-16	-15	-18	-18	-18	-16	-9	-12	-11	-9	-9	-7
ORDER BOOKS	<b>BG</b>	-74	10-00	-42	-15	11-05		-26	-24	-22	-24	-22	-21	-21	-19	-18	-15	-15	-18
	<b>RO</b>	-89	09-99	-12	64	03-98		-26	-31	-32	-30	-27	-29	-22	-29	-26	-25	-27	-22
EMPLOYMENT EXPECTATIONS	<b>BG</b>	-50	01-93	-12	32	07-05		14	27	24	23	23	32	14	13	13	11	13	14
	<b>RO</b>	-39	06-97	-6	38	03-01		-5	1	-4	-5	-9	-2	5	5	4	7	9	9

(a) The confidence indicator is the average of both components.

TABLE 8a: **Industrial investment survey - all branches. EU Member States.**

Results of October/November 2005 investment survey, % change in **value**, over the preceding year

Date of survey:	Oct./Nov.	Mar./Apr.	Oct./Nov.	Mar./Apr.	Oct./Nov.	Mar./Apr.	Oct./Nov.	Mar./Apr.	Oct./Nov.	Mar./Apr.	Oct./Nov.	Mar./Apr.	Oct./Nov.
	2002	2003	2003	2004	2003	2004	2004	2005	2004	2005	2005	2006	2005
for Year	Previs.	Previs.	Estim.	Definit.	Previs.	Previs.	Estim.	Definit.	Previs.	Previs.	Estim.	Definit.	Previs.
	2003				2004				2005				2006
<b>EU</b>	2	5	-4	-3	5	7	2	1	4	5	-1	:	5
<b>Euro area</b>	0	0	-8	-7	3	4	-2	-1	3	3	-4	:	6
<b>BE</b>	7	5	-7	-3	-5	2	-13	-10	22	8	-7	:	22
<b>CZ</b>	7	3	-5	-5	10	23	1	12	10	2	6	:	10
<b>DK</b>	1	3	5	-3	4	22	15	4	-2	10	11	:	7
<b>DE</b>	4	2	-2	-4	4	6	1	-3	2	4	-6	:	9
<b>EE</b>	72	59	42	72	34	44	75	76	60	64	75	:	56
<b>EL</b>	13	12	-22	-8	5	-2	-31	-20	-4	-9	-18	:	11
<b>ES</b>	1	-3	-17	-30	11	16	-17	-3	26	9	4	:	19
<b>FR</b>	0	5	-4	-4	4	6	5	0	-3	1	-5	:	1
<b>IE</b>	-5	19	-28	-12	36	20	:	-7	:	21	:	:	:
<b>IT</b>	-11	-10	-18	-3	-2	-10	-1	10	-2	-10	-6	:	-5
<b>CY</b>	0	-1	-1	-1	0	1	-1	-1	1	1	-1	:	1
<b>LV</b>	-32	-23	-17	3	-3	-3	16	4	21	-2	13	:	5
<b>LT</b>	19	20	21	42	23	37	25	38	27	23	19	:	20
<b>LU</b>	22	8	-8	-10	-4	17	18	17	-12	-8	-25	:	15
<b>HU</b>	20	12	10	7	13	10	13	17	21	17	9	:	12
<b>NL</b>	6	8	-2	-5	-7	2	-11	-10	5	20	12	:	0
<b>AT</b>	0	-3	-5	-15	-3	0	8	-2	-4	5	-6	:	9
<b>PL</b>	23	178	79	92	65	92	63	32	14	32	17	:	-8
<b>PT</b>	-8	-13	-24	-8	2	-7	-10	-1	-8	-8	-14	:	-12
<b>SI</b>	19	22	20	24	25	16	12	17	16	24	19	:	29
<b>SK</b>	40	41	-11	-10	16	24	11	4	-2	3	-16	:	20
<b>FI</b>	1	-12	-8	-12	1	0	2	-3	7	11	7	:	1
<b>SE</b>	-4	4	-6	-9	5	9	4	-3	8	29	15	:	-6
<b>UK</b>	4	0	1	2	3	4	9	5	7	4	7	:	1

Source: European Commission investment surveys.

TABLE 8b: **Industrial investment survey - all branches. EU Member States.**

Results of October/November 2005 investment survey, % change in **volume**, over the preceding year

Date of survey:	Oct./Nov.	Mar./Apr.	Oct./Nov.	Mar./Apr.	Oct./Nov.	Mar./Apr.	Oct./Nov.	Mar./Apr.	Oct./Nov.	Mar./Apr.	Oct./Nov.	Mar./Apr.	Oct./Nov.
	2002	2003	2003	2004	2003	2004	2004	2005	2004	2005	2005	2006	2005
for Year	Previs.	Previs.	Estim.	Definit.	Previs.	Previs.	Estim.	Definit.	Previs.	Previs.	Estim.	Definit.	Previs.
	2003				2004				2005				2006
<b>EU</b>	0	4	-5	-4	3	5	0	-2	2	3	-3	:	2
<b>Euro area</b>	1	1	-7	-7	3	3	-2	-2	3	2	-5	:	5
<b>BE</b>	6	5	-8	-4	-6	1	-14	-11	19	5	-9	:	18
<b>CZ</b>	8	4	-4	-4	11	24	2	13	8	0	4	:	8
<b>DK</b>	5	7	9	1	4	22	15	4	-3	9	10	:	5
<b>DE</b>	6	4	0	-2	5	7	2	-2	3	5	-5	:	10
<b>EE</b>	70	58	41	70	30	40	70	71	54	57	68	:	51
<b>EL</b>	12	11	-22	-9	5	-2	-31	-21	-6	-11	-21	:	9
<b>ES</b>	-1	-5	-19	-32	9	14	-19	-5	24	7	2	:	16
<b>FR</b>	0	5	-4	-4	4	6	5	0	-2	2	-4	:	-1
<b>IE</b>	-2	23	-25	-9	34	19	:	-8	:	20	:	:	:
<b>IT</b>	-11	-10	-18	-3	-4	-12	-3	8	-4	-12	-8	:	-7
<b>CY</b>	-1	-1	-2	-2	-2	-2	-3	-3	-2	-1	-3	:	-2
<b>LV</b>	-33	-24	-18	2	-8	-8	10	-2	12	-9	5	:	-2
<b>LT</b>	22	24	24	46	22	36	25	37	24	20	17	:	17
<b>LU</b>	34	18	1	-1	-4	17	18	17	-14	-10	-27	:	14
<b>HU</b>	17	10	7	5	9	7	9	14	17	14	6	:	9
<b>NL</b>	6	8	-2	-5	-6	3	-10	-9	6	21	13	:	0
<b>AT</b>	0	-3	-5	-15	-4	-1	7	-3	-5	4	-7	:	8
<b>PL</b>	21	173	76	89	62	88	60	30	17	35	20	:	-9
<b>PT</b>	-7	-12	-23	-7	3	-7	-9	-1	-11	-11	-17	:	-15
<b>SI</b>	16	19	17	21	23	14	10	15	15	23	18	:	27
<b>SK</b>	35	36	-14	-13	16	24	12	4	-4	0	-19	:	18
<b>FI</b>	1	-11	-8	-11	1	0	2	-3	6	10	6	:	0
<b>SE</b>	-1	7	-2	-6	8	13	7	-1	8	28	15	:	-7
<b>UK</b>	6	2	3	4	5	6	11	6	7	4	8	:	1

(\*) Source: European Commission investment surveys.

TABLE 8c: **Industrial investment survey by branch. EU Member States.**

Results of October/November 2005 investment survey, % change in **value**, over the preceding year

	Intermediate goods		Motor vehicles		Investment goods		Durable cons. goods		Food & beverages		Non-durable cons. goods		Consumer goods		Total, all man. industry	
	2005	2006	2005	2006	2005	2006	2005	2006	2005	2006	2005	2006	2005	2006	2005	2006
	<b>EU</b>	2	5	-19	0	8	1	-4	23	-12	-1	-2	8	-9	6	-1
<b>Euro area</b>	-1	6	-28	0	5	-1	-5	30	-16	1	-5	9	-14	6	-4	6
<b>BE</b>	-7	29	16	22	3	25	10	2	3	5	-31	26	-22	18	-7	22
<b>CZ</b>	11	4	20	-1	15	2	11	19	-16	27	-12	34	-10	32	6	10
<b>DK</b>	9	19	37	-1	3	-2	-4	19	6	-10	42	17	16	3	11	7
<b>DE</b>	10	8	-51	-2	11	-10	-18	52	-34	15	-10	45	-28	27	-6	9
<b>EE</b>	97	46	:	:	27	30	140	18	43	67	87	84	74	69	75	56
<b>EL</b>	-27	28	-37	-36	-1	-7	-21	43	9	-15	-7	-12	-8	-8	-18	11
<b>ES</b>	-17	3	13	24	-30	33	-10	-3	3	-8	26	-10	7	-8	4	19
<b>FR</b>	-3	5	-11	-13	4	10	7	10	-12	-2	-3	-3	-7	-1	-5	1
<b>IE</b>	:	:	:	:	:	:	:	:	:	:	:	:	:	:	:	:
<b>IT</b>	-16	-10	24	12	-2	-10	7	4	-19	-11	-18	-21	-14	-13	-6	-5
<b>CY</b>	-1	-1	-1	-1	-1	0	-1	-1	-1	-1	-1	-1	-1	0	-1	1
<b>LV</b>	17	14	85	-18	60	-25	0	-5	24	2	1	2	0	2	13	5
<b>LT</b>	32	29	13	8	23	13	22	9	6	23	1	7	5	6	19	20
<b>LU</b>	-40	16	30	1	14	-2	11	16	32	-36	58	68	44	19	-25	15
<b>HU</b>	5	10	25	31	0	12	27	15	8	9	4	3	8	4	9	12
<b>NL</b>	13	8	56	12	7	0	13	18	-5	-8	23	-14	9	-8	12	0
<b>AT</b>	10	8	-51	-2	11	-10	-18	52	-34	15	-10	45	-28	27	-6	9
<b>PL</b>	22	-1	2	8	28	10	-12	-1	16	-7	5	-12	2	-9	17	-8
<b>PT</b>	-3	33	31	-28	-6	14	-2	5	-16	-24	-40	-27	-34	-20	-14	-12
<b>SI</b>	33	27	83	147	3	23	-3	13	20	10	-5	28	1	20	19	29
<b>SK</b>	-21	26	-17	18	16	-1	2	27	-38	-2	9	19	-13	16	-16	20
<b>FI</b>	-2	-4	-26	0	16	16	12	42	10	-4	15	6	12	1	7	1
<b>SE</b>	24	10	50	-1	32	2	-15	-16	-25	-10	-21	-6	-21	-7	15	-6
<b>UK</b>	7	-2	-3	-5	12	5	-2	8	0	-5	9	9	6	9	7	1

Source: European Commission investment surveys.

TABLE 8d: **Industrial investment survey by branch; EU Member States**

Results of October/November 2005 investment survey, % change in **volume**, over the preceding year

	Intermediate goods		Motor vehicles		Investment goods		Durable cons. goods		Food & beverages		Non-durable cons. goods		Consumer goods		Total, all man. industry	
	2005	2006	2005	2006	2005	2006	2005	2006	2005	2006	2005	2006	2005	2006	2005	2006
	<b>EU</b>	-1	3	-21	-3	5	-2	-6	21	-14	-3	-4	6	-12	4	-3
<b>Euro area</b>	-2	4	-28	-2	4	-2	-5	28	-17	-1	-5	7	-15	5	-5	5
<b>BE</b>	-9	25	13	19	0	22	8	-1	0	2	-33	22	-24	14	-9	18
<b>CZ</b>	9	2	18	-3	13	0	9	17	-17	25	-14	32	-12	30	4	8
<b>DK</b>	8	17	35	-3	2	-4	-5	17	5	-11	40	15	14	1	10	5
<b>DE</b>	11	9	-51	-1	12	-9	-17	54	-33	16	-9	46	-27	28	-5	10
<b>EE</b>	89	41	:	:	22	26	130	14	37	62	79	78	67	63	68	51
<b>EL</b>	-29	25	-38	-37	-4	-9	-24	40	6	-17	-9	-14	-11	-10	-21	9
<b>ES</b>	-18	1	11	21	-32	30	-12	-5	1	-10	24	-12	5	-10	2	16
<b>FR</b>	-3	3	-11	-14	4	8	8	8	-12	-4	-2	-5	-6	-3	-4	-1
<b>IE</b>	:	:	:	:	:	:	:	:	:	:	:	:	:	:	:	:
<b>IT</b>	-18	-12	21	9	-4	-11	4	2	-21	-13	-20	-22	-16	-14	-8	-7
<b>CY</b>	-3	-3	-3	-3	-3	-3	-3	-3	-3	-3	-3	-3	-3	-3	-3	-2
<b>LV</b>	8	7	71	-23	48	-30	-7	-11	15	-5	-7	-5	-7	-5	5	-2
<b>LT</b>	29	26	11	6	21	10	20	7	4	20	-2	5	3	4	17	17
<b>LU</b>	-42	15	27	0	11	-3	8	14	29	-36	54	66	40	17	-27	14
<b>HU</b>	2	7	22	27	-3	8	24	11	6	6	1	0	5	1	6	9
<b>NL</b>	14	8	57	12	8	0	14	18	-4	-8	24	-14	10	-8	13	0
<b>AT</b>	9	7	-52	-2	10	-10	-19	51	-34	14	-10	44	-28	26	-7	8
<b>PL</b>	25	-2	4	6	30	8	-10	-3	18	-9	7	-13	4	-11	20	-9
<b>PT</b>	-7	28	27	-30	-9	10	-6	1	-19	-26	-42	-30	-36	-23	-17	-15
<b>SI</b>	31	25	81	143	2	21	-4	11	19	8	-6	26	0	18	18	27
<b>SK</b>	-24	24	-19	16	13	-3	-1	25	-40	-3	6	17	-15	14	-19	18
<b>FI</b>	-3	-6	-27	-2	15	14	11	40	9	-5	14	5	11	-1	6	0
<b>SE</b>	24	9	49	-3	32	0	-15	-17	-26	-11	-22	-8	-21	-9	15	-7
<b>UK</b>	7	-3	-3	-5	12	4	-2	7	0	-5	9	8	7	8	8	1

Source: European Commission investment surveys.

TABLE 8e: Structure of industrial investment in industry as a whole (2004-2006)  
(Breakdown of industrialists' views of the type of investment) <sup>(a)</sup>

	Replacement			Extension			Rationalisation			Others		
	2004	2005	2006	2004	2005	2006	2004	2005	2006	2004	2005	2006
<b>EU</b>	32	34	33	28	24	24	25	26	26	15	17	17
<b>Euro area</b>	31	33	32	27	23	23	26	27	28	16	17	18
<b>BE</b>	38	34	36	41	43	39	12	14	14	10	9	11
<b>CZ</b>	73	71	71	25	20	19	2	8	9	0	1	1
<b>DK</b>	32	34	32	20	22	22	41	33	35	7	11	11
<b>DE</b>	34	40	37	31	18	18	25	29	30	10	14	14
<b>EE</b>	52	43	34	49	55	56	47	52	55	33	36	37
<b>EL</b>	26	22	20	38	43	44	25	23	24	11	12	12
<b>ES</b>	20	16	19	32	38	36	31	28	24	17	18	25
<b>FR</b>	24	26	25	17	17	17	25	23	24	34	34	35
<b>IE</b>	:	:	:	:	:	:	:	:	:	:	:	:
<b>IT</b>	28	34	32	22	23	24	34	32	33	16	11	10
<b>CY</b>	64	50	67	64	52	62	70	64	77	54	36	43
<b>LV</b>	47	49	48	56	56	56	43	40	43	24	30	35
<b>LT</b>	42	44	40	52	44	46	48	53	59	28	30	28
<b>LU</b>	66	74	72	34	38	32	49	51	52	24	27	31
<b>HU</b>	60	50	43	26	30	31	4	7	10	11	12	16
<b>NL</b>	40	37	36	31	32	29	19	20	22	10	11	14
<b>AT</b>	42	40	37	17	18	18	28	29	30	13	14	14
<b>PL</b>	26	27	27	29	30	29	29	28	29	16	16	15
<b>PT</b>	30	33	36	40	36	35	17	17	16	14	14	14
<b>SI</b>	58	59	59	57	54	61	46	51	56	45	43	46
<b>SK</b>	15	16	16	20	24	24	31	29	30	34	31	30
<b>FI</b>	37	29	37	31	35	28	25	30	28	7	6	7
<b>SE</b>	30	28	24	44	37	45	20	28	22	6	7	8
<b>UK</b>	35	38	36	30	23	25	19	19	18	16	20	21

(a) % of respondents that choose this category as the most relevant. More than one category can be chosen, therefore the sum of the 4 categories may be greater than 100.

Source: European Commission investment surveys.

TABLE 8f: Factors influencing industrial investment by country (2004-2006) - Balances <sup>(a)</sup>

	Demand			Financial resources or expected profits			Technical factors <sup>(b)</sup>			Other factors		
	2004	2005	2006	2004	2005	2006	2004	2005	2006	2004	2005	2006
<b>EU</b>	30	37	39	16	20	21	37	37	36	3	7	7
<b>Euro area</b>	28	37	38	14	20	20	37	37	37	2	5	5
<b>BE</b>	46	47	47	34	35	35	60	59	60	23	24	25
<b>CZ</b>	49	68	64	35	33	33	39	42	45	34	33	34
<b>DK</b>	50	59	59	31	37	38	52	56	58	6	8	7
<b>DE</b>	13	37	40	7	22	24	39	40	42	-5	7	6
<b>EE</b>	53	58	61	14	32	38	28	35	36	-13	30	30
<b>EL</b>	40	36	37	17	18	17	33	39	38	5	8	9
<b>ES</b>	24	17	19	6	15	10	7	-6	-7	-18	-24	-18
<b>FR</b>	38	41	41	12	12	10	41	40	38	15	14	10
<b>IE</b>	:	:	:	:	:	:	:	:	:	:	:	:
<b>IT</b>	48	40	36	39	30	32	37	44	40	1	2	3
<b>CY</b>	-1	1	6	-8	-11	-7	17	17	17	-7	1	1
<b>LV</b>	44	47	47	17	19	20	24	19	20	3	1	1
<b>LT</b>	53	59	54	33	43	39	41	42	44	-2	6	12
<b>LU</b>	36	30	29	16	15	16	42	44	45	0	-1	0
<b>HU</b>	26	20	25	5	-1	1	16	11	13	-1	-7	-6
<b>NL</b>	23	24	24	-13	-7	-11	28	28	25	2	-5	-4
<b>AT</b>	32	37	40	:	22	24	39	40	42	7	7	6
<b>PL</b>	70	70	70	49	53	53	67	67	67	32	38	40
<b>PT</b>	15	17	18	8	6	6	19	19	18	2	0	0
<b>SI</b>	28	26	31	21	15	18	29	26	27	-1	-4	-6
<b>SK</b>	72	76	75	32	36	37	53	41	42	43	39	39
<b>FI</b>	33	49	61	21	18	30	61	55	58	28	28	20
<b>SE</b>	27	31	30	18	20	21	21	22	21	1	-1	-2
<b>UK</b>	31	31	35	15	10	13	30	25	26	5	13	16

(a) Balances are the weighted averages of the percentages of answers describing each factor as 'very stimulating' (coefficient 1), 'stimulating' (0.5), 'limiting' (-0.5) and 'very limiting' (-1). The answers which do not mention any of these descriptions are not taken into account in calculating these percentages.

(b) The main technical factors are technological developments, the availability of labour and its attitude towards new technologies, and the technical conditions set by the public authorities before they grant the investment permit.

Source: European Commission investment surveys.