

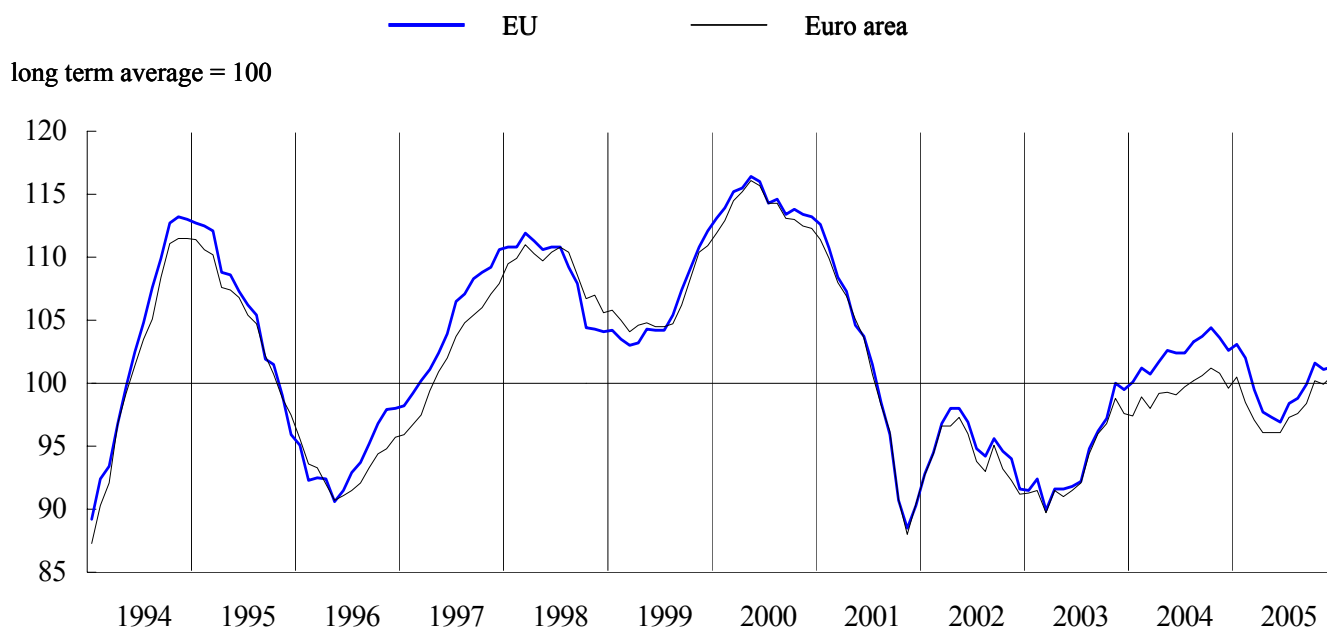


BUSINESS AND CONSUMER SURVEY RESULTS

December 2005

Next publication of Business and Consumer Survey Results scheduled for 31 January 2006
http://europa.eu.int/comm/economy_finance/indicators/businessandconsumersurveys_en.htm

GRAPH 1: Economic sentiment indicator (s.a.)



Economic sentiment is back on track in both the EU and the euro area

The *Economic Sentiment Indicator (ESI)* continued the upward trend that began in the summer of 2005. After a slight fall in the previous month, the indicator improved by a marginal 0.1 of a point for the EU and by 0.6 of a point for the euro area. The euro-area indicator rose above its long-term average, and the gap vis-à-vis the EU indicator diminished.

Developments in the sector-level confidence indicators, which make up the ESI, were mixed. In both the EU and the euro area, confidence in the *services sector* and the *construction sector* weakened, while managers in the *industry* and the *retail sectors* and *consumers* became more confident compared to the previous month.

Although economic sentiment improved at the aggregate level, this masks differences at the country level. Half of all Member States recorded a loss in confidence, while the other half improved or stayed the same. Among the larger Member States, the ESI decreased in a majority of countries. In *France, Italy, Poland* and the *UK*, economic sentiment was lower than in November; although the fall in *France* was marginal. Both *Germany* and *Spain* recorded significant improvements in confidence, reaching 12-month highs.

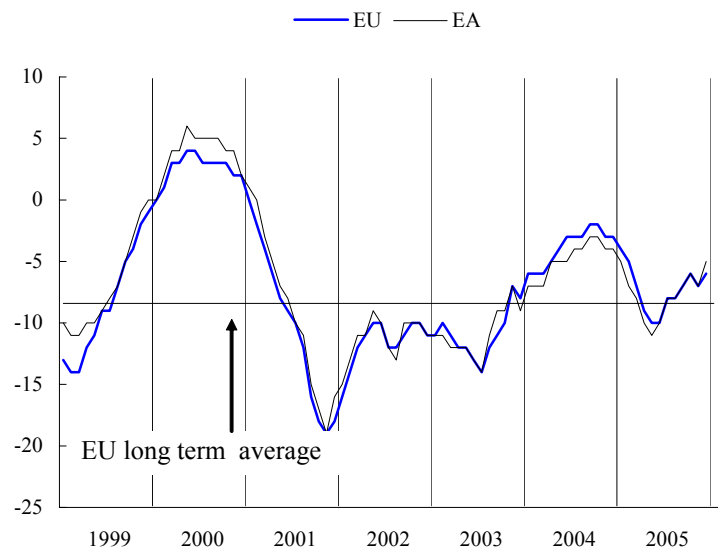
Industrial confidence improves slightly in the EU and by more in the euro area

In December, *industrial confidence* increased by 1 point in the EU and by 2 points in the euro area. It appears that the upward path in industrial confidence, which began towards the end of the second quarter of 2005, is being sustained.

The increase of the EU indicator was mainly driven by a significant improvement of *order books*, together with slightly better *production expectations* and an unchanged assessment of the *stocks of finished products*. The strong improvement in order books suggests that confidence will continue to strengthen in the coming months.

For the individual countries, the picture is rather positive: two thirds of the countries witnessed an increase in industrial confidence; and the indicator improved in all the large Member States, apart from the *UK*, where confidence remained stable.

GRAPH 2: Industrial confidence indicator

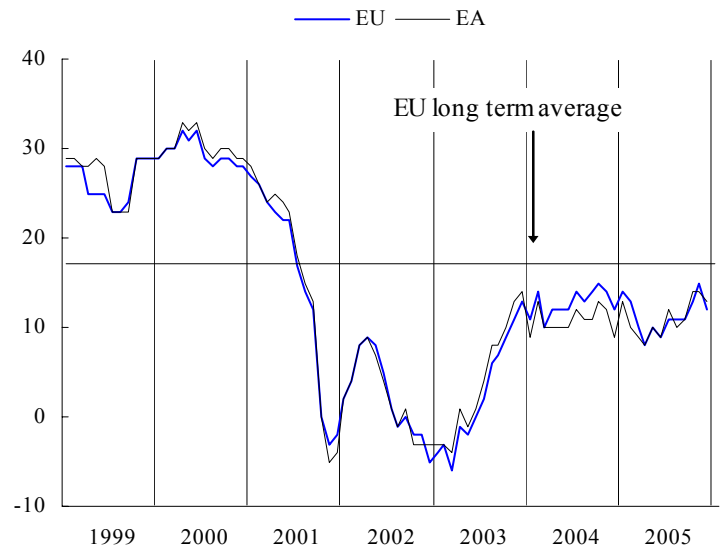


Services confidence slips in both the EU and the euro area

Following the recovery since April 2005, confidence in the services sector fell by 3 points in the EU and by a more moderate 1 point in the euro area. From a longer-term perspective and despite some variability in the series, the indicator has remained more or less flat since the end of 2003.

All three components of the indicator contributed equally to the overall fall in confidence in the EU in December. The *evolution of demand in recent months*, the *assessment of the current business situation* and the *expected evolution of demand* all fell by 3 points. In the euro area, the fall in overall confidence was due to a more pessimistic assessment of *the current business situation*, while the other two components remained stable.

GRAPH 3: Services confidence indicator



At the country level, developments in *Italy* and the *UK* were most noteworthy, with confidence dropping by 9 and 15 points, respectively. In both countries, however, the monthly confidence indicator has been quite volatile throughout 2005. Confidence fell also in *France* by 4 points, after having been fairly stable during the previous six months.

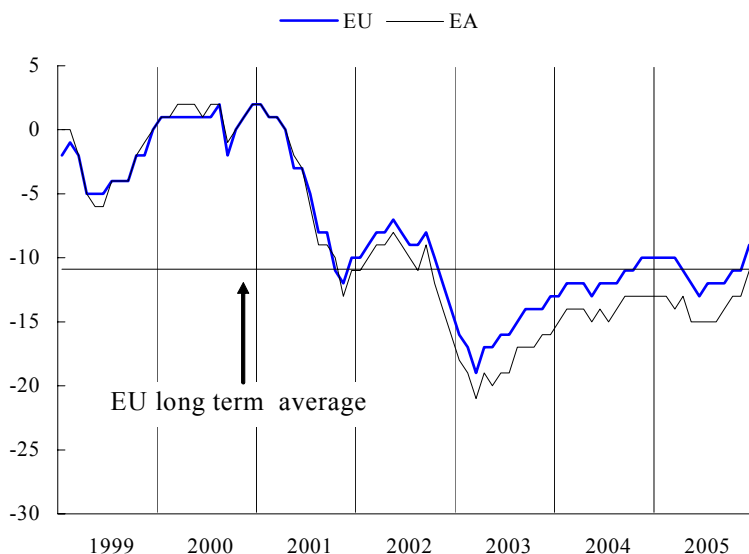
Consumer confidence strengthened in both the EU and the euro area

Consumer confidence improved by 2 points in both the EU and the euro area, and the indicators now appear to have established a slight upward trend. For the first time in more than three years, the indicators are above their long-term averages for both areas.

The positive developments are supported by almost all the underlying components. Over the next 12 months, consumers in the EU expect not only a slight improvement in their *own financial situation*, but an even stronger strengthening of the *general economic situation* and a much more positive development of *unemployment*. Consumers have adjusted their *savings expectations* downward. This, together with the improved expectation of their financial situation, could be a forerunner to rising consumer expenditures in the near future.

Positive developments of the consumer confidence indicator for the EU and the euro area can also be observed at the level of the individual countries. Where the large Member States are concerned, consumers in *Germany* and *Spain* are considerably more optimistic than one month ago. *Polish* consumers are slightly more confident, while confidence among consumers in *France, Italy* and the *UK* remained unchanged.

GRAPH 4: Consumer confidence indicator

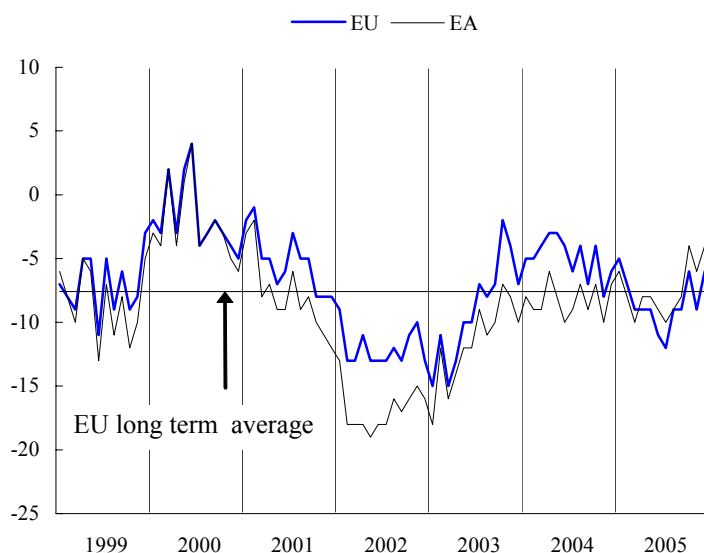


Retail confidence bounced back after a drop in the previous month.

Following the drop in *retailers' confidence* in November (by 3 points in the EU and by 2 points the euro area) the indicator bounced back to its October level. Thus, it appears that the recovery path, which began during the summer of 2005, is still on track.

The rise in overall confidence was mainly due to a strong improvement in retailers' views of the *present business situation*, which rose by 7 points in the EU and by 6 points in the euro area. Furthermore, EU retailers were also more optimistic with regard to the *expected business situation*, while corresponding expectations did not change in the euro area. The assessment of the *volume of stocks* remained stable in both the EU and the euro area.

GRAPH 5: Retail confidence indicator



Among the larger Member States a mixed picture emerges. Retailers in *Spain* and *Poland* became less confident, while confidence rose among *Italian* and *British* retailers. For the *UK*, the indicator rose by a full 9 points, offsetting the drop recorded in November.

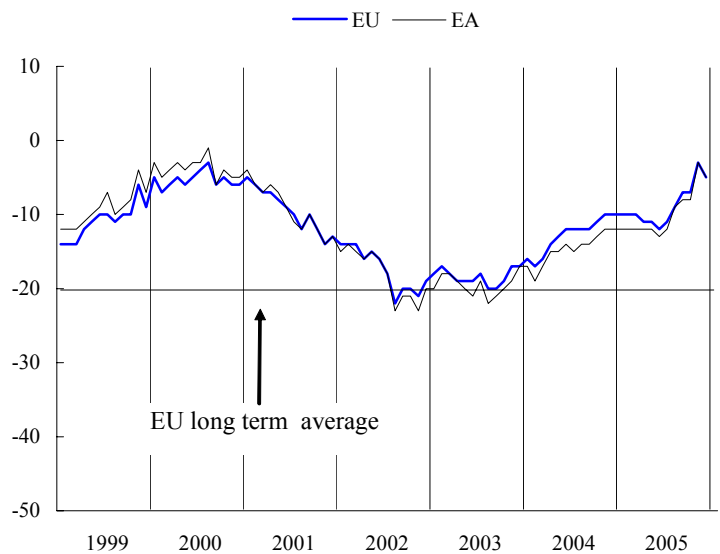
Slight fall in construction confidence.

The *construction confidence* indicator, which had been on an upward path since the beginning of the summer, suffered a slight setback (of 2 points) in both the EU and the euro area. It remains to be seen whether this is just an interruption of the upward trend, or the beginning of a turn around. The level is still much above the long-term trend.

The fall in confidence is reflected in both underlying components. The assessment of the *order books* deteriorated by 2 points in the EU and by 3 points in the euro area. *Managers' expectations concerning the employment situation* were slightly less positive than they were last month.

At the country level, *Italy* and the *UK* were characterised by positive developments, while confidence in *Germany* remained unchanged. *Poland* and *France* registered a moderate fall in confidence. The large fall in confidence in *Spain* (16 points) followed a correspondingly large increase in the previous month.

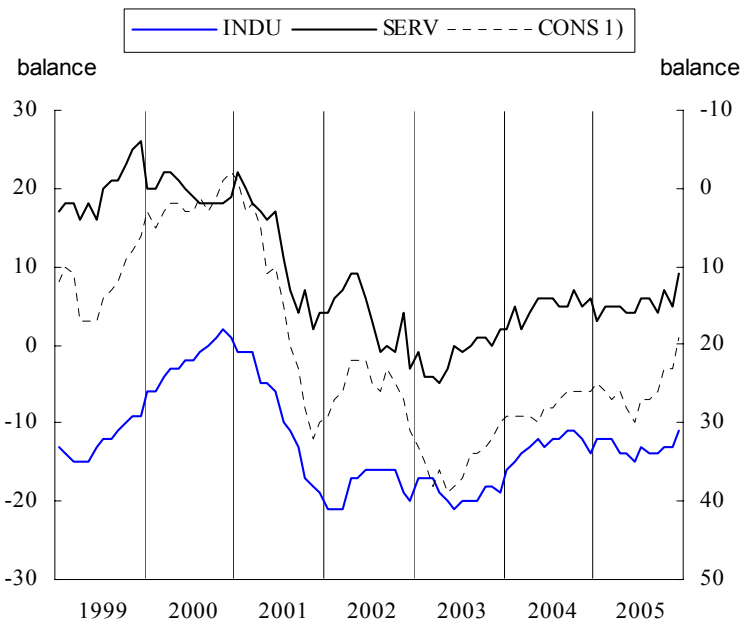
GRAPH 6: Construction confidence indicator



Employment, unemployment and price expectations in the EU

Employment expectations improved significantly in December. Managers in the industry and the services sectors, and consumers expressed more positive expectations with regard to the employment situation. Compared to November, *price expectations* did not change much. While consumers foresee a slight drop in inflation, construction managers expect selling prices to continue their upward trend. Expectations among industrial managers remained stable.

GRAPH 7: Employment and unemployment



1) Unemployment expectations (Right Hand Scale)

GRAPH 8: Price expectations

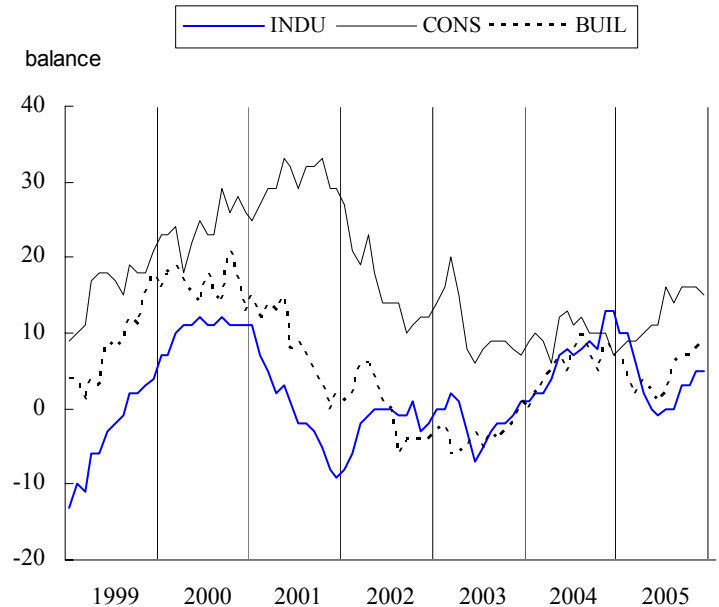


TABLE 1*: Indicators of confidence and economic sentiment(s.a.)		Since 01/1990 ¹⁾					2005											
		Min.		Ave.	Max.		Jan.	Feb.	Mar.	Apr.	May	June	July	Aug.	Sep.	Oct.	Nov	Dec.
		Value	Date		Value	Date												
EU	1. Industry	-28	11-92	-8	7	12-94	-4	-5	-7	-9	-10	-10	-8	-8	-7	-6	-7	-6
	2. Services	-6	03-03	17	32	08-98	14	13	10	8	10	9	11	11	11	13	15	12
	3. Consumer	-27	03-93	-11	2	12-00	-10	-10	-10	-11	-12	-13	-12	-12	-12	-11	-11	-9
	4. Retail trade	-19	12-92	-8	4	07-90	-5	-7	-9	-9	-9	-11	-12	-9	-9	-6	-9	-6
	5. Construction	-42	10-93	-20	3	02-90	-10	-10	-10	-11	-11	-12	-11	-9	-7	-7	-3	-5
	=6. ESI	76.7	07-93	100.0	116.4	05-00	103.1	102.0	99.5	97.7	97.3	96.9	98.4	98.8	99.9	101.6	101.1	101.2
Euro area	1. Industry	-31	07-93	-8	6	05-00	-5	-7	-8	-10	-11	-10	-8	-8	-7	-6	-7	-5
	2. Services	-5	11-01	18	34	08-98	13	10	9	8	10	9	12	10	11	14	14	13
	3. Consumer	-29	07-93	-12	2	05-00	-13	-13	-14	-13	-15	-15	-15	-15	-14	-13	-13	-11
	4. Retail trade	-21	03-93	-9	8	08-90	-6	-8	-10	-8	-8	-9	-10	-9	-8	-4	-6	-4
	5. Construction	-44	08-96	-20	4	03-90	-12	-12	-12	-12	-12	-13	-12	-9	-8	-8	-3	-5
	=6. ESI	75.9	07-93	100.0	116.1	05-00	100.5	98.5	97.1	96.1	96.1	96.1	97.3	97.6	98.4	100.2	99.9	100.5
BE	1. Industry	-33	04-93	-11	5	06-00	-3	-6	-7	-11	-13	-13	-13	-12	-11	-6	-6	-4
	2. Services	-7	03-03	13	33	03-98	15	14	11	12	3	9	6	5	14	14	11	14
	3. Consumer	-27	08-93	-6	17	12-00	-6	-3	-1	-4	-11	-11	-11	-10	-14	-6	-9	-6
	4. Retail trade	-25	05-93	-6	13	04-90	1	-2	-10	-4	-10	-7	-10	-8	-9	0	-7	-4
	5. Construction	-35	11-95	-12	10	02-00	-6	-6	-4	-6	-5	-5	-6	-6	-4	-3	-1	-3
	=6. ESI	77.0	04-93	100.0	120.2	06-00	107.5	106.6	104.3	101.3	95.6	98.6	96.5	97.5	99.9	105.0	103.3	106.0
CZ	1. Industry	-31	03-99	0	27	06-00	7	8	7	5	4	5	7	6	6	10	9	8
	2. Services	32	06-05	40	47	07-02	37	39	38	37	37	32	32	37	40	38	34	41
	3. Consumer	-36	03-98	-15	2	11-05	-4	-5	-2	-6	-3	-2	-2	-4	0	-1	2	-1
	4. Retail trade	-1	02-99	14	26	08-02	17	20	19	14	15	16	16	15	19	20	24	22
	5. Construction	-64	06-99	-18	3	06-95	3	-4	-7	-9	-8	-10	-7	-7	-1	0	-2	-8
	=6. ESI	69.6	03-99	100.0	117.6	04-01	104.7	107.5	106.5	102.0	103.2	98.5	100.3	103.6	109.5	108.2	105.8	110.5
DK	1. Industry	-26	12-98	-2	16	09-94	3	1	1	-5	0	-2	-4	2	0	3	3	1
	2. Services	11	10-01	26	37	04-04	34	33	34	33	34	32	29	31	33	31	33	:
	3. Consumer	-11	10-90	7	18	12-05	14	16	17	14	14	14	13	13	15	16	17	18
	4. Retail trade	-6	10-01	17	37	11-94	28	28	31	29	28	25	26	27	26	27	25	:
	5. Construction	-37	12-91	-8	19	03-98	2	4	3	5	8	6	5	3	5	14	16	18
	=6. ESI	74.5	12-98	100.0	121.2	09-94	114.5	113.8	114.7	109.3	113.5	110.3	105.2	111.9	111.5	112.5	114.1	112.5
DE	1. Industry	-35	04-93	-11	11	09-90	-6	-9	-11	-13	-13	-13	-12	-11	-9	-8	-9	-7
	2. Services	-18	12-02	25	52	03-99	12	6	5	3	9	8	11	10	10	11	10	12
	3. Consumer	-28	10-93	-11	6	05-00	-12	-15	-18	-15	-14	-15	-17	-15	-14	-11	-12	-8
	4. Retail trade	-44	01-03	-18	21	02-91	-17	-22	-30	-25	-23	-22	-25	-23	-25	-19	-24	-24
	5. Construction	-62	11-02	-36	3	01-91	-50	-55	-51	-50	-47	-45	-44	-43	-38	-38	-35	-35
	=6. ESI	80.5	07-93	100.0	120.3	09-90	98.0	95.0	93.0	92.7	93.6	93.4	94.0	95.0	95.6	97.1	96.4	98.1
EE	1. Industry	-31	07-92	5	21	12-05	12	15	17	13	15	11	12	15	13	19	17	21
	2. Services	5	11-04	23	34	12-05	13	17	20	23	23	27	31	23	26	25	31	34
	3. Consumer	-56	04-93	-23	7	12-05	-12	-10	-5	-8	-8	-6	-2	-4	-10	1	3	7
	4. Retail trade	-1	04-03	18	30	04-04	18	20	22	25	22	22	28	21	22	24	23	26
	5. Construction	-46	12-99	3	46	12-05	24	28	31	32	33	30	29	33	27	29	38	46
	=6. ESI	70.6	07-92	100.0	125.3	12-05	102.3	105.8	110.4	110.2	111.0	113.2	117.5	111.4	111.1	115.5	119.6	125.3
EL	1. Industry	-12	09-90	0	13	03-00	-3	-4	-7	-4	-9	-10	-10	-8	-6	-6	-6	-2
	2. Services	-14	04-03	26	62	08-00	20	18	23	22	16	11	10	12	13	21	20	14
	3. Consumer	-44	07-03	-30	-6	04-00	-32	-32	-33	-35	-31	-36	-32	-33	-35	-37	-36	-36
	4. Retail trade	-24	06-95	2	27	03-04	13	5	9	10	4	2	-1	1	5	5	4	12
	5. Construction	-53	03-05	-12	33	04-00	-44	-48	-53	-48	-31	-38	-49	-47	-45	-40	-36	-34
	=6. ESI	78.9	09-90	100.0	128.1	07-00	94.2	92.3	90.0	91.4	86.5	83.3	84.2	86.4	88.6	88.8	88.7	92.1
ES	1. Industry	-44	01-93	-9	7	04-00	-1	-5	-4	-6	-7	-8	-5	-5	-4	-5	-5	-3
	2. Services	10	10-04	30	56	06-98	15	12	14	17	27	25	21	23	19	20	22	23
	3. Consumer	-37	10-92	-11	6	03-00	-9	-10	-10	-11	-11	-12	-11	-12	-11	-11	-13	-10
	4. Retail trade	-36	02-93	-7	10	06-00	-10	-12	-7	-2	-1	-6	-4	-4	-5	-4	-3	-5
	5. Construction	-57	10-92	-2	42	01-99	17	26	28	20	15	10	17	25	26	23	39	23
	=6. ESI	69.9	01-93	100.0	116.7	04-00	98.4	95.3	97.6	97.7	100.8	98.7	98.1	98.9	98.1	98.7	99.1	101.1
FR	1. Industry	-41	06-93	-8	15	06-00	-5	-5	-9	-10	-12	-9	-8	-8	-9	-7	-9	-7
	2. Services	-22	06-93	3	25	06-90	11	9	8	6	7	10	11	10	10	11	10	6
	3. Consumer	-34	08-93	-18	4	01-01	-17	-14	-14	-17	-21	-17	-16	-15	-13	-15	-16	-16
	4. Retail trade	-37	04-97	-16	6	10-04	-2	-3	0	1	-3	-5	-11	-9	-6	-5	-3	0
	5. Construction	-60	03-93	-16	34	10-00	11	11	11	8	7	5	9	7	8	12	13	11
	=6. ESI	75.1	06-93	100.0	119.1	04-00	105.9	106.2	104.8	102.3	101.1	104.2	104.9	105.4	105.6	105.2	103.8	103.6
IE	1. Industry	-23	11-01	-2	21	11-99	-12	1	0	-2	-8	-2	3	-4	-4	-11	-3	-5
	2. Services	-14	05-03	16	44	08-98	-2	-9	-4	9	-2	-12	7	-6	-2	10	16	19
	3. Consumer	-31	03-93	-4	19	01-00	7	4	7	1	-1	1	4	1	-4	-3	1	3
	4. Retail trade	-21	05-03	3	24	06-00	-4	-8	-3	-11	-8	-1	-5	2	-10	-7	0	0
	5. Construction	-54	09-02	10	58	06-97	13	12	27	29	15	45	34	20	28	24	31	13
	=6. ESI	79.2	06-93	100.0	122.4	11-99	91.7	96.1	98.2	98.6	91.1	95.1	100.4	94.4	93.5	94.1	100.7	100.1
IT	1. Industry	-22	04-93	-4	13	07-95	-2	-6	-7	-7	-9	-9	-6	-4	-3	-3	-3	-1
	2. Services	-5	11-01	17	44	02-98	19	13	16	12	10	-1	11	0	14	23	28	19
	3. Consumer	-38	04-93	-13	2	06-01	-16	-18	-18	-16	-17	-19	-21	-21	-21	-20	-17	-17
	4. Retail trade	-19	10-96	8	39	10-95	10	14	12	3	13	6	16	19	24	30	22	26
	5. Construction	-68	10-93	-13	21	05-90	6	2	-5	-3	-1	-5	-8	-3	-5	-10	-6	-2
	=6. ESI	73.0	04-93	100.0	118.9	02-95	100.3	96.6	96.3	96.0	95.6	92.7	95.9	93.6	98.1	101.9	103.8	102.7
CY	1. Industry	-9	04-03	3	13	04-02	4	3	6	3	5	0	3	0	1	-1	-3	-1
	2. Services	-21	09-02	5	19	06-05	11	13	18	15	7	19	15	10	4	3	14	3
	3. Consumer	-43	07-04	-29	-13	06-01	-34	-36	-35	-38	-35							

TABLE 1* (continued) : Indicators of confidence and economic sentiment (s.a.)

		Since 01/1990 ^(*)					2005											
		Min.		Ave.	Max.		Jan.	Feb.	Mar.	Apr.	May	June	July	Aug.	Sep.	Oct.	Nov.	Dec.
		Value	Date	Value	Date													
LT	1. Industry	-37	11-98	-14	5	10-05	-9	-7	-3	-4	-8	-2	4	-3	4	5	1	4
	2. Services	9	04-05	18	33	11-05	16	12	12	9	16	16	25	17	23	28	33	27
	3. Consumer	-32	05-01	-13	-1	10-04	-5	-3	-5	-1	-4	-3	-4	-6	-7	-5	-1	-2
	4. Retail trade	-25	09-00	-4	26	06-04	5	10	-5	-1	3	7	14	13	12	13	17	15
	5. Construction	-76	09-00	-40	7	12-05	-10	-5	-2	-22	-11	-4	1	1	2	1	7	7
	=6. ESI	74.8	11-98	100.0	137.3	11-05	115.0	115.0	115.6	115.9	115.6	121.4	131.6	121.0	127.9	133.6	137.3	134.0
LU	1. Industry	-35	05-92	-10	26	04-95	-1	-6	2	-9	-18	-17	-20	-21	-18	-10	-9	-4
	2. Services	:	:	:	:	:	:	:	:	:	:	:	:	:	:	:	:	:
	3. Consumer	-4	09-05	3	14	02-02	6	2	4	3	2	-2	-1	-1	-4	-2	1	-1
	4. Retail trade	:	:	:	:	:	:	:	:	:	:	:	:	:	:	:	:	:
	5. Construction	-73	03-94	-26	24	03-90	-12	-22	-29	-20	-21	-26	-33	-26	-32	-22	-20	-22
	=6. ESI	82.9	06-96	100.0	123.1	04-95	105.3	100.5	106.5	99.2	94.1	94.4	91.1	92.3	90.4	97.2	98.2	99.8
HU	1. Industry	-15	05-99	-3	8	12-97	-7	-12	-12	-14	-14	-12	-11	-10	-6	-5	-6	-3
	2. Services	-10	10-04	1	14	03-02	-6	-1	-5	-8	-4	-8	-4	-1	0	2	2	-7
	3. Consumer	-58	04-95	-28	0	08-02	-21	-21	-24	-28	-30	-32	-27	-26	-24	-26	-21	-17
	4. Retail trade	-28	05-05	-8	9	11-97	-20	-20	-28	-24	-28	-25	-17	-26	-13	-12	-12	-12
	5. Construction	-24	12-04	-8	11	09-98	-19	-20	-17	-17	-17	-21	-15	-16	-9	-13	-10	-15
	=6. ESI	71.9	04-05	100.0	123.5	04-98	82.7	83.1	75.2	71.9	74.9	72.3	80.2	83.0	91.0	94.2	95.2	87.9
NL	1. Industry	-12	05-93	-2	6	10-00	-2	-2	-1	-2	-2	-4	-6	-4	-2	1	0	-1
	2. Services	3	06-03	16	35	12-97	7	11	7	10	6	9	6	4	6	9	8	8
	3. Consumer	-19	07-93	4	31	03-00	-4	-4	-3	2	-4	-5	-4	-7	-7	-2	-2	3
	4. Retail trade	-16	12-03	12	30	10-99	-7	-10	-6	-4	-10	-8	-10	-9	-7	-3	-3	7
	5. Construction	-25	05-03	-3	27	12-00	-6	-5	-2	-1	-1	1	1	4	6	4	6	3
	=6. ESI	79.0	05-93	100.0	117.5	12-97	93.1	94.8	94.7	95.9	94.2	92.4	89.7	91.0	93.0	97.9	96.7	97.3
AT	1. Industry	-30	06-93	-12	8	03-90	-7	-9	-11	-11	-10	-11	-12	-10	-7	-9	-8	-9
	2. Services	0	01-02	15	30	03-98	13	12	9	12	10	7	10	9	8	8	12	12
	3. Consumer	-16	04-96	-2	11	07-00	1	-3	-2	0	-3	-3	-4	-4	-5	-3	-2	-3
	4. Retail trade	-29	03-03	-13	4	07-00	-15	-14	-10	-9	-15	-14	-13	-13	-10	-8	-9	-8
	5. Construction	-60	04-96	-29	-12	12-05	-25	-22	-24	-24	-20	-16	-23	-18	-14	-13	-14	-12
	=6. ESI	71.6	04-96	100.0	119.8	05-00	104.9	101.7	98.5	101.9	99.8	97.9	98.5	99.4	100.3	100.8	105.2	102.9
PL	1. Industry	-29	10-01	-14	9	09-97	-11	-11	-13	-14	-14	-13	-13	-13	-11	-13	-12	-11
	2. Services ⁽ⁿ⁾	-8	03-03	2	10	11-05	7	8	5	8	7	5	6	8	7	8	10	9
	3. Consumer	-40	08-01	-29	-14	12-05	-20	-19	-18	-18	-21	-23	-23	-22	-20	-18	-15	-14
	4. Retail trade	-19	01-02	-6	7	07-98	-2	-6	-7	-8	-7	-6	-6	-5	-5	-5	-1	-4
	5. Construction	-63	12-02	-42	-21	11-05	-29	-32	-30	-29	-29	-31	-29	-28	-27	-24	-21	-25
	=6. ESI	75.8	02-99	100.0	149.6	11-05	137.1	142.6	136.2	140.9	135.7	129.4	132.3	139.8	140.5	141.0	149.6	148.1
PT	1. Industry	-28	06-93	-7	7	03-98	-9	-11	-10	-6	-10	-14	-14	-12	-10	-7	-8	-10
	2. Services	-17	05-03	7	29	06-01	-2	5	-3	-3	1	-4	-9	2	-1	-3	-3	4
	3. Consumer	-49	03-03	-23	-1	07-91	-35	-34	-31	-30	-31	-39	-42	-42	-41	-41	-40	-41
	4. Retail trade	-27	01-03	-8	4	01-99	-7	-10	-7	-7	-10	-13	-17	-19	-19	-17	-20	-11
	5. Construction	-56	02-03	-26	-1	12-97	-33	-40	-34	-39	-34	-42	-44	-39	-41	-31	-38	-39
	=6. ESI	73.9	06-93	100.0	113.6	05-97	90.2	92.0	91.2	95.1	93.2	86.7	83.3	88.2	88.6	90.7	89.5	90.8
SI	1. Industry	-21	03-99	-3	18	06-00	0	-2	0	-3	-3	-2	-3	-2	-1	0	-1	3
	2. Services	12	05-05	23	32	10-02	21	21	14	12	12	15	19	18	18	14	17	15
	3. Consumer	-29	06-99	-19	-9	10-04	-20	-13	-15	-13	-13	-18	-18	-17	-21	-22	-26	-24
	4. Retail trade	3	01-01	11	23	04-99	13	10	8	14	13	13	18	16	16	16	19	17
	5. Construction	-33	06-02	-8	6	01-05	6	2	2	-2	-4	-7	-8	-9	-8	-11	-10	-10
	=6. ESI	76.8	03-99	100.0	131.3	06-00	100.8	102.0	92.0	92.5	92.2	91.5	97.0	98.2	95.6	90.3	93.0	94.6
SK	1. Industry	-22	12-95	5	26	05-96	9	13	12	11	6	8	-2	-1	7	2	4	-2
	2. Services	27	09-05	46	60	06-03	34	38	33	37	33	33	40	31	27	28	30	41
	3. Consumer	-50	08-99	-30	-9	06-05	-13	-13	-13	-10	-12	-9	-12	-14	-24	-18	-12	-14
	4. Retail trade	-17	10-93	8	34	11-98	8	5	12	15	12	20	16	12	15	16	22	24
	5. Construction	-86	07-99	-27	18	03-97	-12	-17	-13	-11	-11	-9	-7	-10	-9	-11	-5	-6
	=6. ESI	71.2	03-99	100.0	125.5	05-96	100.4	105.4	99.5	104.8	98.2	102.5	98.9	92.5	87.5	89.9	95.2	101.8
FI	1. Industry	-24	01-93	2	30	10-94	3	4	6	-3	-2	10	19	15	12	11	11	2
	2. Services	-12	09-03	26	61	09-00	38	33	32	25	34	38	41	41	40	37	35	38
	3. Consumer	6	11-01	15	23	02-00	13	16	17	14	14	10	12	15	13	16	17	17
	4. Retail trade	-17	11-00	-4	10	05-04	-1	-8	-4	-1	1	6	4	2	7	10	9	6
	5. Construction	-97	09-91	-17	48	06-98	-7	12	16	21	13	14	21	22	10	10	12	19
	=6. ESI	74.6	04-91	100.0	120.7	11-94	106.4	105.8	107.1	101.4	104.9	110.5	115.0	113.5	111.5	111.1	111.5	108.4
SE	1. Industry	-29	10-01	-5	15	05-00	6	0	-7	-9	-7	-10	-10	-7	-10	-2	-7	-4
	2. Services	-24	01-03	17	46	12-00	35	30	32	31	27	32	32	26	34	37	42	33
	3. Consumer	-10	09-96	7	25	03-00	8	8	7	6	5	3	3	4	6	8	8	10
	4. Retail trade	-8	09-01	7	27	04-00	0	2	0	1	-2	3	7	11	13	14	17	21
	5. Construction	-83	12-93	-36	27	07-05	10	3	-3	6	6	15	27	8	21	14	15	19
	=6. ESI	79.0	10-01	100.0	127.1	03-00	113.8	110.0	107.0	105.1	104.4	105.4	106.0	106.3	107.8	112.3	110.7	110.7
UK	1. Industry	-40	02-91	-11	11	02-95	-4	0	-5	-10	-13	-17	-10	-17	-10	-10	-15	-15
	2. Services	-20	12-02	14	37	10-97	10	24	3	-1	1	-1	3	10	3	3	13	-2
	3. Consumer	-28	10-92	-8	7	10-97	0	0	3	0	-3	-3	-1	-2	-3	-4	-4	-4
	4. Retail trade	-32	11-05	-5	20	06-04	-5	-9	-13	-19	-22	-28	-30	-21	-22	-23	-32	-23
	5. Construction	-79	06-91	-20	5	08-04	-2	-3	-2	-7	-10	-12	-12	-11	-10	-5	-9	-8
	=6. ESI	71.1	02-91	100.0	118.4	12-97	108.0	113.5	104.7	100.0	97.8	94.8	98.7	97.6	101.6	100.3	99.3	95.5

In the tables: (s.a.) = seasonally adjusted, (n) = not seasonally adjusted, : = not available.

(*) Minimum, maximum and averages are calculated over the period of availability which is not necessarily 01/1990.

The economic sentiment indicator is composed of the industrial confidence indicator (40%), the service confidence indicator (30%), the consumer confidence indicator (20%), the construction confidence indicator (5%), and the retail trade confidence indicator (5%). Its long term average (1990-2003) equals 100.

The reported ESI average is based on this standardisation sample. All confidence indicators are balances.

Source: unless stated otherwise: European Commission business and consumer surveys.

TABLE 2: Monthly survey of manufacturing industry (s.a.) ^(a)

		Since 01/1990						2005											
		Min.		Ave.		Max.		Jan.	Feb.	Mar.	Apr.	May	June	July	Aug.	Sep.	Oct.	Nov.	Dec.
		Value	Date	Value	Date	Value	Date												
INDUSTRIAL CONFIDENCE INDICATOR	EU	-28	11-92	-8	7	12-94	-4	-5	-7	-9	-10	-10	-8	-8	-7	-6	-7	-6	
	Euro area	-31	07-93	-8	6	05-00	-5	-7	-8	-10	-11	-10	-8	-8	-7	-6	-7	-5	
	BE	-33	04-93	-11	5	06-00	-3	-6	-7	-11	-13	-13	-13	-12	-11	-6	-6	-4	
	CZ	-31	03-99	0	27	06-00	7	8	7	5	4	5	7	6	6	10	9	8	
	DK	-26	12-98	-2	16	09-94	3	1	1	-5	0	-2	-4	2	0	3	3	1	
	DE	-35	04-93	-11	11	09-90	-6	-9	-11	-13	-13	-13	-12	-11	-9	-8	-9	-7	
	EE	-31	07-92	5	21	12-05	12	15	17	13	15	11	12	15	13	19	17	21	
	EL	-12	09-90	0	13	03-00	-3	-4	-7	-4	-9	-10	-10	-8	-6	-6	-6	-2	
	ES	-44	01-93	-9	7	04-00	-1	-5	-4	-6	-7	-8	-5	-5	-4	-5	-5	-3	
	FR	-41	06-93	-8	15	06-00	-5	-5	-9	-10	-12	-9	-8	-8	-9	-7	-9	-7	
	IE	-23	11-01	-2	21	11-99	-12	1	0	-2	-8	-2	3	-4	-4	-11	-3	-5	
	IT	-22	04-93	-4	13	07-95	-2	-6	-7	-7	-9	-9	-6	-4	-3	-3	-3	-1	
	CY	-9	04-03	3	13	04-02	4	3	6	3	5	0	3	0	1	-1	-3	-1	
	LV	-45	04-93	-10	8	12-05	2	3	3	4	5	4	5	6	7	5	7	8	
	LT	-37	11-98	-14	5	10-05	-9	-7	-3	-4	-8	-2	4	-3	4	5	1	4	
	LU	-35	05-92	-10	26	04-95	-1	-6	2	-9	-18	-17	-20	-21	-18	-10	-9	-4	
	HU	-15	05-99	-3	8	12-97	-7	-12	-12	-14	-14	-12	-11	-10	-6	-5	-6	-3	
	NL	-12	05-93	-2	6	10-00	-2	-2	-1	-2	-2	-4	-6	-4	-2	1	0	-1	
	AT	-30	06-93	-12	8	03-90	-7	-9	-11	-11	-10	-11	-12	-10	-7	-9	-8	-9	
	PL	-29	10-01	-14	9	09-97	-11	-11	-13	-14	-14	-13	-13	-13	-11	-13	-12	-11	
	PT	-28	06-93	-7	7	03-98	-9	-11	-10	-6	-10	-14	-14	-12	-10	-7	-8	-10	
SI	-21	03-99	-3	18	06-00	0	-2	0	-3	-3	-2	-3	-2	-1	0	-1	3		
SK	-22	12-95	5	26	05-96	9	13	12	11	6	8	-2	-1	7	2	4	-2		
FI	-24	01-93	2	30	10-94	3	4	6	-3	-2	10	19	15	12	11	11	2		
SE	-29	10-01	-5	15	05-00	6	0	-7	-9	-7	-10	-10	-7	-10	-2	-7	-4		
UK	-40	02-91	-11	11	02-95	-4	0	-5	-10	-13	-17	-10	-17	-10	-10	-15	-15		
PRODUCTION EXPECTATIONS	EU	-16	11-92	6	23	12-94	9	9	7	5	4	4	5	7	7	9	7	8	
	Euro area	-18	12-92	5	21	12-94	7	6	6	4	2	4	4	6	7	8	6	8	
	BE	-36	04-93	-3	16	12-94	0	0	3	3	-1	-4	-4	-2	-2	4	3	5	
	CZ	-26	05-93	22	61	05-95	19	22	24	22	26	31	30	28	28	35	36	30	
	DK	-23	12-98	10	30	02-98	14	10	17	4	12	7	-1	10	8	14	15	14	
	DE	-26	11-92	1	20	12-94	2	2	0	-2	-3	-1	-1	3	4	5	2	4	
	EE	-70	04-92	19	68	03-02	24	37	38	25	32	22	17	27	23	30	27	29	
	EL	3	02-91	26	44	02-00	22	23	19	22	14	19	14	16	17	18	14	22	
	ES	-19	01-93	5	17	12-00	9	3	9	12	9	5	5	5	7	6	7	10	
	FR	-30	07-93	6	27	10-00	9	9	7	3	3	7	7	7	4	7	4	10	
	IE	-22	11-01	9	35	11-99	-10	24	1	7	-3	4	17	2	-3	-10	7	1	
	IT	-12	12-92	13	31	12-94	14	14	10	11	9	7	9	11	13	15	13	14	
	CY	1	05-02	13	34	12-04	9	5	19	10	23	4	16	5	10	11	2	8	
	LV	-21	04-93	16	41	03-02	18	19	19	19	23	20	21	23	24	21	24	25	
	LT	-22	04-94	12	35	08-97	6	6	16	26	10	19	29	20	29	26	21	27	
	LU	-42	10-91	-4	28	04-95	16	14	15	0	-10	5	-10	-15	-11	-3	2	2	
	HU	-10	06-05	12	34	12-97	6	-3	-6	-6	-8	-10	-2	-4	8	7	2	4	
	NL	-4	04-93	6	15	11-99	2	5	8	6	6	4	-2	5	6	13	9	6	
	AT	-19	06-93	4	18	11-03	9	6	11	9	11	8	6	7	13	10	8	6	
	PL	-4	10-01	20	44	02-03	16	17	15	14	16	16	16	17	21	17	20	23	
	PT	-11	03-93	5	21	01-97	-5	-3	0	10	1	-5	-5	-4	-4	0	-1	1	
SI	10	10-01	23	42	06-00	30	26	29	24	28	24	19	24	27	26	29	23		
SK	-12	12-95	31	62	12-97	15	38	36	37	27	26	8	6	40	25	32	10		
FI	-26	06-91	13	50	07-05	27	20	30	14	10	32	50	41	38	30	33	14		
SE	-19	05-91	15	46	05-00	38	23	9	12	18	15	11	16	13	29	18	22		
UK	-38	02-91	5	33	02-95	8	16	9	5	0	-4	5	0	5	3	1	1		
ORDER BOOKS	EU	-50	07-93	-20	1	02-95	-12	-15	-17	-20	-22	-22	-19	-20	-18	-17	-18	-15	
	Euro area	-54	07-93	-19	4	06-00	-11	-16	-17	-19	-21	-21	-18	-18	-16	-16	-16	-13	
	BE	-51	05-93	-20	11	06-00	-9	-18	-17	-23	-26	-28	-25	-29	-23	-20	-17	-14	
	CZ	-50	12-98	-7	30	01-01	3	3	-3	-3	-6	-6	-5	-4	-3	-3	-3	0	
	DK	-41	04-99	-6	32	12-94	2	-3	-5	-7	-8	-6	2	4	3	7	4	5	
	DE	-61	07-93	-24	12	07-90	-13	-17	-19	-22	-22	-23	-21	-23	-19	-18	-19	-14	
	EE	-43	10-92	1	29	06-01	7	5	10	10	6	8	12	10	10	21	11	22	
	EL	-31	06-05	-13	7	05-98	-17	-21	-24	-20	-24	-31	-25	-24	-22	-20	-16	-14	
	ES	-65	01-93	-16	11	07-98	-3	-8	-10	-14	-14	-15	-8	-7	-7	-11	-9	-5	
	FR	-64	06-93	-16	27	06-00	-12	-14	-19	-17	-21	-17	-16	-16	-19	-15	-18	-18	
	IE	-36	06-93	-7	24	12-99	-13	-14	2	-9	-7	-4	-3	-8	-1	-17	-14	-11	
	IT	-47	06-93	-16	13	02-95	-12	-21	-20	-22	-24	-24	-20	-14	-14	-16	-15	-11	
	CY	-39	02-03	-18	-3	07-05	-8	-12	-6	-4	-8	-9	-3	-8	-7	-12	-10	-5	
	LV	-79	07-93	-40	-7	12-05	-18	-16	-14	-13	-15	-13	-12	-9	-9	-11	-8	-7	
	LT	-79	11-98	-42	-9	11-93	-29	-25	-24	-30	-29	-24	-18	-24	-17	-15	-23	-20	
	LU	-64	02-92	-18	34	12-97	-12	-20	-11	-16	-23	-37	-30	-38	-24	-18	-15	-10	
	HU	-40	03-03	-19	0	04-98	-24	-28	-23	-33	-31	-29	-27	-25	-20	-16	-18	-11	
	NL	-25	01-93	-8	6	11-00	-4	-4	-5	-8	-7	-9	-9	-10	-6	-5	-5	-4	
	AT	-57	04-96	-25	11	03-90	-25	-27	-32	-31	-27	-30	-31	-31	-26	-29	-25	-25	
	PL	-77	01-02	-58	8	09-97	-47	-48	-51	-53	-54	-54	-54	-53	-52	-54	-54	-52	
	PT	-52	07-93	-19	9	03-98	-15	-21	-24	-26	-26	-31	-30	-30	-21	-20	-20	-22	
SI	-51	03-99	-18	12	06-00	-14	-19	-14	-18	-19	-15	-14	-13	-16	-14	-17	-6		
SK	-70	03-99	-8	49	09-94	10	5	3	-8	-8	-4	-14	-4	-13	-14	-14	-14		
FI	-70	09-91	-13	40	11-94	1	6	2	0	-4	-2	1	-1	-2	9	4	2		
SE	-67	03-92	-23	25	12-94	-7	-11	-14	-20	-22	-27	-26	-24	-25	-17	-18	-15		
UK	-62	07-91	-22	11	02-95	-13	-7	-9	-21	-23	-27	-17	-29	-23	-				

TABLE 2: (continued) Monthly survey of manufacturing industry (s.a.)^(a)

		Since 01/1990						2005											
		Min.		Ave.		Max.		Jan.	Feb.	Mar.	Apr.	May	June	July	Aug.	Sep.	Oct.	Nov.	Dec.
		Value	Date	Value	Date	Value	Date												
STOCKS OF FINISHED PRODUCTS ^(b)	EU	3	12-94	11	22	06-93		9	9	12	13	14	13	12	12	10	10	11	11
	Euro area	2	11-94	11	24	04-93		9	10	12	13	14	12	11	11	10	10	9	10
Component of the industrial confidence indicator	BE	-4	02-95	9	26	10-01		0	1	6	12	11	7	11	5	7	3	3	4
	CZ	-12	04-00	16	46	08-93		3	0	0	5	9	11	2	7	8	4	7	8
	DK	-7	03-94	10	28	06-99		5	3	10	11	4	7	13	6	10	11	10	16
	DE	-9	09-90	10	25	07-93		9	11	13	13	15	14	13	13	11	11	11	11
	EE	-16	05-92	6	39	06-93		-5	-2	-4	-5	-5	-4	-7	-7	-6	-7	-12	-12
	EL	1	06-94	12	22	09-90		13	13	15	16	18	18	18	15	13	16	17	15
	ES	-1	11-02	15	47	01-93		10	11	12	16	14	15	13	13	12	8	13	13
	FR	-2	04-00	14	34	06-93		12	10	15	16	18	17	14	13	13	12	12	12
	IE	-13	12-99	6	23	11-93		12	7	2	5	15	5	6	7	8	5	2	4
	IT	-1	07-95	8	17	10-90		9	10	11	11	11	8	9	10	8	7	6	6
	CY	-34	09-01	-14	6	12-05		-11	-15	-6	-3	-1	-5	4	-2	-1	3	2	6
	LV	-12	03-04	7	43	07-93		-6	-5	-4	-5	-7	-4	-4	-5	-5	-5	-5	-6
	LT	-16	01-95	12	49	01-94		3	2	1	7	4	2	-1	4	-1	-3	-3	-4
	LU	-22	03-95	8	31	03-02		8	12	0	10	19	18	20	10	18	10	14	5
	HU	-7	11-03	3	15	12-98		3	4	8	3	2	-2	4	3	6	5	2	3
	NL	-1	12-94	5	11	06-91		5	5	5	5	4	6	5	6	6	6	5	5
	AT	4	03-90	14	26	04-96		6	7	12	11	12	11	10	8	9	10	6	8
	PL	-11	10-94	3	20	02-99		3	2	1	2	2	1	2	4	3	3	4	3
	PT	-7	09-04	8	25	06-93		8	8	6	2	5	6	8	4	6	0	2	8
	SI	-1	06-00	14	28	02-96		16	14	15	16	17	15	14	15	15	12	14	7
SK	-27	02-01	9	55	05-94		-3	4	2	-4	1	0	1	5	7	5	7	3	
FI	-20	04-95	4	31	01-96		18	14	13	23	13	-1	-8	-6	0	5	5	9	
SE	3	03-00	17	37	11-01		13	12	15	20	17	17	15	12	18	17	22	19	
UK	6	03-04	17	32	11-98		8	8	13	15	17	20	19	23	10	13	20	19	
PRODUCTION TREND OBSERVED IN RECENT MONTHS	EU	-23	01-93	-1	19	01-95		4	4	-1	-5	-3	-2	1	-2	0	1	1	4
	Euro area	-25	01-93	-2	16	01-95		3	1	-4	-5	-4	-4	-1	-3	-1	0	0	4
BE	-20	02-93	-1	16	05-97		4	-4	-1	-4	-6	-10	-6	-6	3	2	-2	8	
CZ	-32	10-98	12	42	11-00		24	20	8	8	11	7	14	12	24	23	20	20	
DK	-21	04-99	10	41	09-94		2	3	-1	1	8	12	15	9	8	11	12	17	
DE	-32	02-02	-4	22	12-90		-1	-3	-8	-9	-8	-6	-1	-8	-1	0	-1	7	
EE	-24	03-99	13	56	06-01		14	9	22	30	27	22	22	22	22	21	20	24	
EL	-5	10-90	14	36	01-00		10	6	7	-3	3	4	6	4	1	6	7	16	
ES	-44	04-93	0	21	04-95		6	5	2	-6	1	0	5	0	-4	-2	3	-1	
FR	-38	07-93	4	36	01-95		16	15	9	5	4	9	8	7	6	3	6	3	
IE	-25	10-01	6	38	03-00		-4	9	-3	10	6	4	6	13	-6	3	6	0	
IT	-36	06-93	-10	14	03-95		-10	-13	-15	-16	-16	-18	-16	-7	-10	-12	-12	-9	
CY	-36	04-03	-9	12	04-05		-7	-7	-5	12	1	-6	-2	-1	-14	-1	0	-4	
LV	-49	04-93	3	29	06-01		10	9	11	13	9	16	16	11	15	12	18	21	
LT	-36	07-94	1	34	04-98		7	7	-6	-16	8	7	21	16	19	21	4	31	
LU	-41	04-92	-2	32	04-95		17	12	-7	-2	-19	-9	-18	-5	0	-2	-1	5	
HU	-30	06-99	-1	27	04-98		-9	-11	-16	-23	-13	-15	-13	-9	3	1	0	8	
NL	-12	05-93	3	14	10-97		3	-2	-1	3	4	-3	0	-5	10	4	-2	5	
AT	-28	06-93	5	27	03-90		14	7	4	4	6	5	9	9	6	12	16	16	
PL	-18	07-96	0	23	04-04		21	5	-7	-14	-3	2	8	0	5	5	6	18	
PT	-18	01-93	-2	15	08-94		1	-5	-10	-18	-5	-12	-12	-7	-3	2	-6	-3	
SI	-20	02-99	8	39	05-00		7	1	2	8	6	10	8	-8	9	9	2	16	
SK	-30	12-96	16	78	12-03		17	27	24	30	34	34	13	5	-20	-2	6	43	
FI	-28	06-91	11	53	12-04		27	42	8	13	5	-3	7	-4	3	21	18	25	
SE	-28	07-91	9	48	12-94		15	17	13	12	8	6	2	3	17	23	15	17	
UK	-46	06-91	-2	34	03-95		3	13	9	-7	-4	4	5	-5	-10	-6	0	-10	
EXPORT ORDER BOOKS	EU	-45	01-93	-20	1	02-95		-12	-12	-15	-19	-20	-21	-18	-19	-17	-16	-15	-12
	Euro area	-52	06-93	-21	2	06-00		-10	-12	-15	-18	-19	-19	-18	-18	-17	-15	-14	-12
BE	-56	05-93	-22	7	06-00		-8	-22	-20	-30	-32	-34	-31	-35	-24	-23	-24	-18	
CZ	-41	12-98	-3	26	09-00		1	0	-10	-9	-8	-8	-10	-6	-7	-6	-7	0	
DK	-39	04-99	-4	25	09-94		-1	-4	-6	-8	-8	-6	6	2	4	2	5	3	
DE	-60	08-93	-27	0	02-90		-9	-8	-12	-14	-13	-15	-16	-17	-13	-12	-12	-7	
EE	-37	03-99	1	25	03-01		-1	0	-4	3	0	3	1	2	-1	2	0	5	
EL	-36	05-03	-16	13	03-95		-17	-18	-19	-21	-20	-27	-21	-23	-24	-19	-12	-5	
ES	-55	01-93	-19	6	05-95		-9	-15	-15	-23	-22	-24	-18	-19	-24	-25	-16	-17	
FR	-65	07-93	-13	36	06-00		-8	-9	-13	-14	-21	-18	-15	-15	-16	-12	-12	-14	
IE	-53	09-93	-7	38	04-00		-2	-20	-1	-27	-5	-2	-5	7	-5	-23	-11	-23	
IT	-43	09-92	-19	19	02-95		-15	-20	-23	-24	-26	-27	-25	-20	-20	-18	-18	-13	
CY	-53	05-03	-25	5	05-05		-19	-34	-4	-18	5	-10	-12	-10	-14	-25	-11	-13	
LV	-59	12-98	-36	-15	12-03		-21	-20	-19	-23	-21	-20	-19	-16	-20	-16	-17	-15	
LT	-65	04-99	-36	-14	06-01		-31	-27	-31	-29	-29	-29	-22	-25	-18	-19	-24	-25	
LU	-75	11-91	-23	45	04-00		-25	-26	-28	-27	-41	-45	-41	-45	-30	-25	-21	-20	
HU	-44	12-02	-16	7	02-98		-24	-30	-29	-32	-30	-28	-32	-30	-26	-25	-17	-12	
NL	-24	01-93	-6	11	09-00		1	-1	-3	-3	-6	-8	-5	-7	-4	-3	-5	-2	
AT	-58	04-96	-34	-1	03-90		-35	-37	-39	-41	-39	-39	-41	-42	-37	-39	-37	-33	
PL	-75	05-99	-57	13	07-97		-52	-52	-58	-56	-59	-57	-56	-59	-57	-57	-58	-56	
PT	-59	04-93	-17	22	01-95		-20	-18	-22	-25	-28	-30	-26	-27	-23	-21	-23	-19	
SI	-53	05-99	-16	15	06-00		-11	-13	-13	-13	-14	-11	-12	-11	-14	-10	-17	-7	
SK	-57	03-99	-8	53	01-94		6	7	1	-9	-8	-4	-8	1	-4	-6	-14	-12	
FI	-43	01																	

TABLE 2: (continued) **Monthly survey of manufacturing industry (s.a.)**^(a)

		Since 01/1990						2005											
		Min.		Ave.		Max.		Jan.	Feb.	Mar.	Apr.	May	June	July	Aug.	Sep.	Oct.	Nov.	Dec.
		Value	Date	Value	Date	Value	Date												
EMPLOYMENT EXPECTATIONS	EU	-39	06-93	-15	2	11-00		-12	-12	-12	-14	-14	-15	-13	-14	-14	-13	-13	-11
	Euro area	-42	06-93	-14	4	11-00		-12	-12	-13	-14	-14	-15	-13	-13	-14	-12	-12	-10
	BE	-26	09-93	-9	9	09-00		-10	-8	-10	-12	-14	-16	-15	-15	-12	-11	-10	-5
	CZ	-58	06-99	-25	2	03-01		-5	-7	-7	-8	-10	-8	-11	-9	-5	-10	-6	-7
	DK	-23	06-93	-3	13	03-98		0	-3	3	-10	-4	-7	-9	1	-4	2	2	0
	DE	-52	06-93	-18	8	02-90		-17	-17	-21	-21	-19	-18	-17	-17	-17	-15	-17	-14
	EE	-78	04-92	-12	16	03-05		8	11	16	14	13	8	1	4	4	9	7	4
	EL	-12	12-04	-2	12	05-02		-8	-6	-3	-11	-9	-9	-10	-8	-5	-6	-7	-3
	ES	-53	06-93	-9	9	03-01		-4	-2	-3	2	-1	-4	-8	-8	-8	-12	-12	-5
	FR	-50	09-93	-17	12	09-00		-17	-18	-12	-23	-21	-20	-15	-18	-21	-17	-14	-15
	IE	-34	12-92	-10	16	09-00		-10	-6	-5	-1	4	-4	1	-15	-11	-12	-14	-13
	IT	-30	08-96	-4	11	11-00		-2	-2	-3	-3	-3	-7	-6	-3	-6	-5	-4	-2
	CY	-15	04-02	11	40	10-04		32	10	8	21	10	10	24	9	10	33	12	13
	LV	-51	04-93	-9	11	11-05		6	3	4	5	7	8	9	6	7	10	11	9
	LT	-59	04-94	-27	8	10-05		-12	-5	2	1	-10	-6	0	-4	1	8	0	6
	LU	-55	12-91	-27	1	09-01		-20	-19	-26	-16	-31	-23	-39	-29	-27	-24	-26	-29
	HU	-60	12-91	-17	10	10-97		-13	-14	-13	-16	-21	-19	-14	-12	-12	-15	-15	-12
	NL	-30	06-93	-8	15	06-90		-9	-9	-10	-11	-12	-10	-13	-10	-10	-7	-9	-8
	AT	-29	01-96	-10	6	09-00		-3	-3	-6	-6	-10	-8	-6	-10	-4	-4	0	-1
	PL	-55	12-99	-24	-3	09-05		-8	-8	-4	-7	-6	-5	-5	-5	-3	-4	-4	-3
	PT	-35	06-93	-16	-2	02-90		-19	-25	-22	-22	-21	-24	-20	-19	-23	-21	-22	-24
SI	-42	10-95	-23	-10	07-04		-18	-18	-18	-18	-18	-17	-20	-24	-22	-21	-21	-18	
SK	-56	06-99	-24	2	06-96		-12	-14	-16	-18	-17	-15	-22	-20	-19	-18	-17	-22	
FI	-60	06-91	-16	15	12-00		-21	-6	-6	-3	-13	-12	1	-5	2	-1	-8	0	
SE	-51	06-92	-20	23	12-94		-16	-18	-17	-23	-18	-30	-29	-23	-29	-26	-26	-26	
UK	-50	03-91	-20	2	06-97		-12	-12	-8	-12	-16	-21	-14	-16	-19	-15	-16	-16	
SELLING-PRICE EXPECTATIONS	EU	-13	01-99	5	26	02-95		10	10	6	2	0	-1	0	0	3	3	5	5
	Euro area	-10	12-98	5	25	02-95		10	9	5	2	0	-1	1	1	4	3	6	6
	BE	-18	02-96	2	26	12-94		14	4	2	0	-6	-9	-2	-4	-1	5	3	1
	CZ	-6	12-98	20	71	03-95		11	10	11	5	2	-1	5	3	13	16	5	5
	DK	-12	11-01	-1	12	11-04		10	0	2	-2	-1	-3	-5	-2	-7	1	2	3
	DE	-8	12-93	6	23	02-95		15	11	6	2	-2	-1	-1	-1	3	1	5	3
	EE	-28	03-99	16	86	04-92		22	19	12	14	16	14	14	14	20	23	14	21
	EL	-4	01-99	17	41	10-90		9	10	9	7	8	5	7	6	6	7	7	7
	ES	-18	04-93	3	35	04-95		8	7	7	-4	1	2	1	3	4	4	8	5
	FR	-26	01-99	0	24	02-90		0	7	3	-1	0	-4	-4	-1	3	-2	5	10
	IE	-25	11-92	-3	29	11-03		-5	2	-1	-8	12	-1	5	-4	1	5	-6	3
	IT	-10	12-98	11	40	03-95		11	11	7	9	7	4	7	9	9	11	10	12
	CY	-9	10-01	6	38	10-03		3	-2	5	7	3	-2	2	4	10	-7	6	4
	LV	-17	12-98	16	50	07-94		24	19	17	17	15	18	18	20	26	18	24	25
	LT	-20	01-00	15	75	11-93		-8	1	7	7	-3	4	6	1	11	14	6	6
	LU	-50	08-91	-3	53	12-94		10	3	13	3	-3	-5	-11	-15	-11	-1	6	3
	HU	11	08-05	28	51	01-01		23	24	16	16	14	15	14	11	18	20	15	13
	NL	-7	01-99	4	20	12-94		11	1	1	-4	-1	-2	3	1	2	6	5	4
	AT	-23	03-96	-1	17	03-90		6	2	-1	0	-3	-2	-5	1	3	1	3	2
	PL	-6	06-02	14	46	01-93		3	4	-5	-2	-4	-2	-4	0	-1	-5	2	-2
	PT	-9	05-03	8	29	10-90		-7	3	1	-2	-5	-4	6	7	10	3	3	-1
SI	-24	04-99	-8	5	01-01		0	0	-3	-8	-10	-8	-7	-5	-6	-3	-4	-5	
SK	-33	03-01	29	81	04-95		-12	0	28	12	3	1	-3	8	-1	19	6	-2	
FI	-34	03-96	2	49	08-94		17	31	15	4	3	2	20	6	9	4	14	14	
SE	-20	11-96	5	37	12-94		21	13	1	2	-2	1	-3	-1	6	6	8	16	
UK	-30	01-99	0	29	02-95		15	16	15	5	-1	-1	-8	-6	-6	1	-1	0	

(a) The indicator is the arithmetic average of the balances (%) of the questions on production expectations, order-books and stocks (the last with inverted sign).

(b) Highest figure is considered as minimum, lowest figure is considered as maximum.

TABLE 3: Monthly survey of services (s.a.)^(a)

		Since 01/1990						2005											
		Min.		Ave.		Max.		Jan.	Feb.	Mar.	Apr.	May	June	July	Aug.	Sep.	Oct.	Nov.	Dec.
		Value	Date	Value	Date	Value	Date												
SERVICES CONFIDENCE INDICATOR	EU	-6	03-03	17	32	08-98	14	13	10	8	10	9	11	11	11	13	15	12	
	Euro area	-5	11-01	18	34	08-98	13	10	9	8	10	9	12	10	11	14	14	13	
	BE	-7	03-03	13	33	03-98	15	14	11	12	3	9	6	5	14	14	11	14	
	CZ	32	06-05	40	47	07-02	37	39	38	37	37	32	32	37	40	38	34	41	
	DK	11	10-01	26	37	04-04	34	33	34	33	34	32	29	31	33	31	33	.	
	DE	-18	12-02	25	52	03-99	12	6	5	3	9	8	11	10	10	11	10	12	
	EE	5	11-04	23	34	12-05	13	17	20	23	23	27	31	23	26	25	31	34	
	EL	-14	04-03	26	62	08-00	20	18	23	22	16	11	10	12	13	21	20	14	
	ES	10	10-04	30	56	06-98	15	12	14	17	27	25	21	23	19	20	22	23	
	FR	-22	06-93	3	25	06-90	11	9	8	6	7	10	11	10	10	11	10	6	
	IE	-14	05-03	16	44	08-98	-2	-9	-4	9	-2	-12	7	-6	-2	10	16	19	
	IT	-5	11-01	17	44	02-98	19	13	16	12	10	-1	11	0	14	23	28	19	
	CY	-21	09-02	5	19	06-05	11	13	18	15	7	19	15	10	4	3	14	3	
	LV	7	03-02	11	16	11-05	11	12	14	13	12	13	15	13	14	13	16	14	
	LT	9	04-05	18	33	11-05	16	12	12	9	16	16	25	17	23	28	33	27	
	HU	-10	10-04	1	14	03-02	-6	-1	-5	-8	-4	-8	-4	-1	0	2	2	-7	
	NL	3	06-03	16	35	12-97	7	11	7	10	6	9	6	4	6	9	8	8	
	AT	0	01-02	15	30	03-98	13	12	9	12	10	7	10	9	8	8	12	12	
	PL⁽ⁿ⁾	-8	03-03	2	10	11-05	7	8	5	8	7	5	6	8	7	8	10	9	
	PT	-17	05-03	7	29	06-01	-2	5	-3	-3	1	-4	-9	2	-1	-3	-3	4	
SI	12	05-05	23	32	10-02	21	21	14	12	12	15	19	18	18	14	17	15		
SK	27	09-05	46	60	06-03	34	38	33	37	33	33	40	31	27	28	30	41		
FI	-12	09-03	26	61	09-00	38	33	32	25	34	38	41	41	40	37	35	38		
SE	-24	01-03	17	46	12-00	35	30	32	31	27	32	32	26	34	37	42	33		
UK	-20	12-02	14	37	10-97	10	24	3	-1	1	-1	3	10	3	3	13	-2		
ASSESSMENT OF BUSINESS SITUATION	EU	-19	03-03	13	37	06-00	13	8	2	-1	1	-1	4	4	8	8	10	7	
	Euro area	-18	03-03	15	39	09-00	14	6	3	0	2	-1	5	3	8	10	11	9	
	BE	-27	12-01	-3	28	01-98	0	-5	-2	-6	-16	-9	-10	-7	3	0	-6	-2	
	CZ	48	06-05	59	72	07-02	57	60	58	58	60	48	48	57	60	55	51	55	
	DK	4	05-03	23	41	04-00	27	27	28	29	31	30	25	31	26	27	.		
	DE	-35	01-03	26	63	12-98	15	5	6	-1	6	4	11	10	10	9	11	11	
	EE	1	11-04	27	48	11-02	14	19	24	27	29	30	35	31	34	27	32	28	
	EL	-42	04-03	11	58	09-00	19	22	28	26	17	9	8	10	13	18	19	17	
	ES	4	10-04	30	67	04-00	9	6	5	8	21	19	17	21	16	13	14	17	
	FR	-35	09-96	-1	29	06-00	13	9	5	2	4	6	9	9	8	13	10	10	
	IE	-20	06-05	19	52	11-99	-4	-10	-7	4	-2	-20	15	-10	5	12	17	15	
	IT	-39	06-05	11	44	02-01	18	0	-15	-18	-29	-39	-22	-35	-1	-1	13	-6	
	CY	-33	09-02	-4	16	04-04	8	5	10	5	5	10	7	5	-2	1	12	4	
	LV	4	10-04	11	18	04-03	7	8	12	9	9	11	9	12	6	12	10	11	
	LT	2	04-05	22	48	03-03	12	7	5	2	13	12	27	9	24	20	25	29	
	HU	-15	10-04	-1	19	05-02	-8	-6	-7	-13	-8	-11	-10	-5	-6	0	-4	-12	
	NL	-26	07-93	12	70	12-00	18	19	13	13	19	17	15	14	16	27	23	22	
	AT	-4	10-96	12	30	03-98	11	7	6	8	6	2	7	5	0	2	7	8	
	PL⁽ⁿ⁾	-12	02-04	3	9	11-05	6	6	0	3	3	1	4	4	5	6	9	9	
	PT	-22	06-03	4	24	11-97	2	-5	-7	-10	-9	-14	-17	-7	-6	-9	-9	-10	
SI	1	12-05	25	44	10-02	20	20	17	4	5	10	14	10	10	8	3	1		
SK	13	10-05	42	66	01-03	23	30	28	34	29	25	36	18	15	13	21	30		
FI	-47	03-03	18	79	05-98	17	27	27	24	8	13	22	25	19	24	0	10		
SE	-60	01-02	8	43	11-05	41	37	36	27	31	30	37	27	26	36	43	41		
UK	-35	12-02	-1	27	12-97	2	9	-21	-17	-15	-18	-15	1	-4	-8	-7	-15		
EVOLUTION OF DEMAND IN RECENT MONTHS	EU	-9	02-02	15	32	03-98	11	10	9	7	14	9	11	11	10	12	15	12	
	Euro area	-12	02-02	15	32	03-98	9	5	7	6	13	9	11	10	10	13	13	13	
	BE	-9	03-03	13	41	11-97	10	15	12	12	8	17	13	5	12	18	7	12	
	CZ	15	08-02	28	39	08-04	25	28	28	25	23	24	21	25	34	31	25	27	
	DK	9	04-03	26	42	12-04	37	36	38	38	37	37	32	33	36	36	39	.	
	DE	-25	01-03	20	43	09-98	10	3	4	4	12	9	10	12	10	11	9	14	
	EE	3	11-04	23	43	11-03	9	16	21	21	22	24	29	24	33	31	36	39	
	EL	-9	04-03	32	71	06-01	16	17	26	26	17	12	10	10	11	28	22	11	
	ES	-1	08-02	24	56	06-98	11	5	5	11	24	19	16	19	13	16	17	23	
	FR	-33	03-97	5	37	01-90	9	6	6	6	7	11	12	10	9	10	8	3	
	IE	-24	10-03	9	46	08-98	-4	-15	-10	3	-4	-24	-2	-14	-15	4	9	17	
	IT	-28	08-02	13	39	11-05	12	6	16	12	32	11	23	12	19	33	39	33	
	CY	-34	08-02	0	21	04-04	8	14	9	9	3	20	15	8	-5	-4	18	2	
	LV	-4	02-02	9	19	11-05	9	15	14	13	10	13	15	13	11	11	19	14	
	LT	0	08-02	19	44	11-05	14	24	16	7	17	18	29	22	25	35	44	32	
	HU	-14	04-05	-2	13	03-02	-13	-3	-9	-14	-5	-8	-6	-1	1	1	-1	-5	
	NL	-49	03-01	7	50	06-98	-16	-14	2	-14	-24	-21	-18	-22	-21	-25	-23	-29	
	AT	-16	01-02	15	35	03-98	19	15	11	11	9	6	11	10	9	6	14	16	
	PL⁽ⁿ⁾	-18	02-03	-2	9	10-05	5	5	3	3	3	2	2	4	4	9	9	9	
	PT	-34	05-03	4	26	06-01	-5	6	-5	-9	-2	-9	-9	5	-7	-6	-1	1	
SI	-1	03-05	18	29	08-04	15	21	-1	3	3	8	15	18	17	11	17	16		
SK	27	09-05	45	67	07-03	35	40	35	36	29	29	40	32	27	28	30	42		
FI	-20	09-03	28	83	04-01	35	36	34	32	43	53	32	54	48	47	47	47		
SE	-19	10-01	18	53	01-01	26	36	33	32	29	33	34	26	42	43	47	32		
UK	-19	07-03	15	43	01-97	11	31	7	0	12	-1	4	13	4	-1	19	-2		

TABLE 3: (continued) **Monthly survey of services (s.a.)^(a)**

		Since 01/1990						2005											
		Min.		Ave.		Max.		Jan.	Feb.	Mar.	Apr.	May	June	July	Aug.	Sep.	Oct.	Nov.	Dec.
		Value	Date	Value	Date	Value	Date												
EVOLUTION OF DEMAND EXPECTED IN THE MONTHS AHEAD	EU	1	11-01	24	37	06-98	18	20	18	18	15	18	19	16	15	19	20	17	
	Euro area	-3	11-01	23	38	05-00	17	18	17	17	16	18	19	15	15	19	18	18	
Component of the services confidence indicator	BE	-2	07-03	28	51	01-95	34	33	24	30	16	20	16	18	26	23	32	32	
	CZ	24	01-04	32	44	01-03	28	29	27	27	28	25	27	28	27	27	27	41	
	DK	16	09-01	30	41	12-04	37	35	35	33	34	30	30	36	33	30	32	.	
	DE	-16	11-01	29	59	09-00	11	11	6	6	9	9	14	9	8	13	11	11	
	EE	7	06-04	19	34	12-05	15	16	16	20	20	29	29	13	12	17	24	34	
	EL	5	05-03	37	75	09-01	23	14	13	15	14	13	14	15	14	16	20	15	
	ES	19	10-04	38	59	06-98	26	25	31	31	37	38	30	29	28	30	34	30	
	FR	-18	09-93	5	32	03-01	11	11	13	9	10	12	13	12	12	10	11	6	
	IE	-7	05-03	19	45	06-98	3	-2	6	19	-1	7	6	6	4	13	21	25	
	IT	-6	09-00	25	57	06-01	26	32	47	40	28	26	32	23	22	36	31	30	
	CY	3	06-03	17	34	03-05	16	20	34	30	14	29	22	17	18	13	12	3	
	LV	8	01-03	14	25	02-02	18	13	17	17	18	16	21	14	24	17	19	17	
	LT	-7	10-02	14	31	11-05	23	7	16	17	18	19	18	21	20	29	31	19	
	HU	-5	12-05	5	17	02-02	2	7	0	4	3	-3	5	2	5	6	9	-5	
	NL	-4	01-96	26	54	07-00	20	28	6	30	22	30	22	19	23	25	25	31	
	AT	-1	10-01	18	34	06-98	11	12	10	17	14	12	12	12	14	15	16	11	
	PL⁽ⁿ⁾	-10	03-03	4	17	08-05	9	14	14	16	15	11	12	17	14	9	12	9	
	PT	-16	09-03	14	40	06-01	-4	12	4	11	14	13	0	7	12	5	1	19	
	SI	22	04-03	27	32	12-04	28	23	25	30	28	27	28	27	25	22	29	29	
	SK	35	03-05	51	65	06-03	45	45	35	40	41	46	43	42	38	43	38	51	
	FI	-12	10-96	32	71	01-01	62	36	35	20	51	48	70	45	53	39	57	57	
	SE	-4	01-03	24	66	02-01	37	18	27	34	20	32	26	25	34	31	37	25	
UK	-14	03-03	28	57	10-97	18	30	23	14	5	17	18	15	9	18	28	11		
EVOLUTION OF EMPLOYMENT IN RECENT MONTHS	EU	-9	03-03	10	26	08-98	0	4	1	2	3	1	3	5	3	1	2	7	
	Euro area	-7	03-03	11	28	01-99	-1	1	2	1	1	1	2	3	2	-1	4	7	
	BE	-14	08-02	8	30	08-98	4	0	1	5	-4	5	8	8	1	14	3	14	
	CZ	-30	11-04	-11	18	11-02	-6	-27	-20	-8	-20	-21	-16	-10	-3	-13	-17	-18	
	DK	-2	04-03	9	21	04-00	13	13	12	15	15	16	18	19	19	18	21	.	
	DE	-20	12-02	15	44	03-99	-2	-1	-1	0	-1	0	3	0	2	-3	-3	4	
	EE	1	06-02	9	16	09-05	8	16	5	11	13	11	11	14	16	11	11	11	
	EL	-42	06-01	8	45	06-00	-17	-8	-11	-3	-4	0	1	4	8	-1	-2	-2	
	ES	4	03-03	18	45	08-98	9	11	13	12	12	13	10	13	10	8	12	13	
	FR	-27	06-93	4	23	12-90	3	-1	2	0	0	1	4	4	4	-6	3	2	
	IE	-36	05-05	1	25	02-98	-12	-13	-14	-13	-36	-21	-11	-20	-10	5	3	0	
	IT	-13	05-03	6	25	05-00	-11	5	1	-1	2	-9	-6	0	-7	-2	13	16	
	CY	-23	06-02	-4	6	02-05	3	6	5	5	0	4	3	2	0	-1	-1	-3	
	LV	-1	05-02	5	10	12-05	4	4	9	6	5	4	6	6	5	6	7	10	
	LT	-30	11-03	-10	17	11-02	3	5	-8	-9	2	-4	-4	-3	-1	9	3	5	
	HU	-17	12-05	-6	2	07-04	-7	-2	-11	-10	-9	-15	-7	-1	-4	-12	-16	-17	
	NL	-8	05-03	17	66	06-98	1	-1	-1	4	4	5	6	5	5	5	9	10	
	AT	-7	08-02	6	18	07-98	2	8	5	8	3	2	3	0	2	2	2	4	
	PL⁽ⁿ⁾	-15	02-04	-6	3	08-05	-3	2	-4	2	-1	-1	2	3	-2	-3	-1	1	
	PT	-34	05-03	-2	28	07-98	-19	-18	-15	-15	-5	-5	-20	-15	-11	-11	-11	-10	
	SI	-10	12-03	5	16	08-05	2	7	6	10	8	7	16	16	16	13	13	7	
	SK	-66	12-04	-39	3	07-02	-37	-51	-44	-55	-48	-42	-41	-49	-56	-51	-32	-38	
FI	-26	04-97	29	91	11-97	1	25	22	-4	14	15	7	24	26	23	23	16		
SE	-40	04-03	4	42	01-01	2	-2	4	8	2	14	16	13	16	13	20	16		
UK	-22	04-03	9	27	05-00	5	18	0	4	11	4	3	16	9	5	-8	10		
EVOLUTION OF EMPLOYMENT EXPECTED IN THE MONTHS AHEAD	EU	-5	04-03	10	26	06-98	3	5	5	5	4	4	6	6	4	7	5	9	
	Euro area	-4	05-03	9	26	04-00	1	2	3	4	1	1	4	4	4	6	4	8	
	BE	-11	04-03	16	34	12-05	17	17	15	24	9	11	13	19	24	13	23	34	
	CZ	-31	06-04	-19	-3	08-02	-22	-14	-17	-20	-17	-22	-21	-17	-14	-14	-20	-16	
	DK	4	02-03	12	22	11-05	15	17	14	18	13	11	14	19	21	18	22	.	
	DE	-12	05-03	-1	16	06-01	-2	0	1	-4	-3	-1	2	-2	0	3	-1	3	
	EE	7	03-03	16	26	03-05	18	19	26	24	20	18	19	22	17	19	8	16	
	EL	-33	12-00	10	47	05-99	-6	-14	-18	-5	-3	-3	-1	1	3	11	8	6	
	ES	3	05-01	18	41	04-00	15	8	11	15	14	16	13	15	12	13	12	13	
	FR	-31	06-97	1	21	06-98	0	0	5	6	1	4	6	3	5	7	1	-1	
	IE	-13	11-04	8	31	04-98	-2	-8	3	-10	-5	0	7	4	5	6	5	0	
	IT	-10	06-05	11	34	06-00	-3	-2	0	5	-2	-10	-3	10	1	1	6	17	
	CY	-7	07-05	3	18	05-02	2	3	1	2	-5	-5	-7	-2	-1	-1	2	4	
	LV	-1	05-02	8	15	12-05	10	10	11	12	13	13	12	9	14	10	13	15	
	LT	-51	05-02	-6	25	10-04	16	16	7	3	4	-3	17	19	-8	2	17	13	
	HU	-9	09-03	-2	5	05-04	0	1	-2	-5	-4	-8	-3	1	-2	-4	-3	-3	
	NL	-4	03-05	18	40	01-99	8	9	-4	10	7	9	9	10	9	9	12	16	
	AT	-6	01-04	8	27	09-98	8	5	3	7	5	3	6	5	2	5	6	3	
	PL⁽ⁿ⁾	-13	07-04	-6	1	08-05	-8	-2	-6	0	-4	-3	-4	1	-1	-2	-3	-1	
	PT	-32	08-05	2	37	08-03	-10	-7	-6	-8	-16	-21	-15	-32	-17	-7	-9	-3	
	SI	-9	08-03	9	24	09-05	16	19	18	21	20	18	23	19	24	15	12	10	
	SK	-67	12-04	-43	-16	05-02	-41	-46	-44	-53	-43	-48	-47	-38	-36	-33	-30	-35	
FI	-31	11-96	23	82	07-00	-12	24	11	3	3	16	5	18	17	8	13	24		
SE	-35	11-01	11	62	09-00	8	2	11	11	11	22	12	12	21	13	19	16		
UK	-17	12-02	17	33	06-98	17	20	13	15	20	16	15	12	3	15	3	14		

(a) The indicator is the arithmetic average of the balances (%) for the questions on business situation and recent and expected evolution of demand.

(n) Not seasonally adjusted.

TABLE 4: Consumer opinion on economic and financial conditions (s.a.) ^{(a)(b)}

		Since 01/1990						2005											
		Min.		Ave.		Max.		Jan.	Feb.	Mar.	Apr.	May	June	July	Aug.	Sep.	Oct.	Nov.	Dec.
		Value	Date	Value	Date	Value	Date												
CONSUMER CONFIDENCE INDICATOR	EU	-27	03-93	-11	2	12-00		-10	-10	-10	-11	-12	-13	-12	-12	-12	-11	-11	-9
	Euro area	-29	07-93	-12	2	05-00		-13	-13	-14	-13	-15	-15	-15	-15	-14	-13	-13	-11
	BE	-27	08-93	-6	17	12-00		-6	-3	-1	-4	-11	-11	-11	-10	-14	-6	-9	-6
	CZ	-36	03-98	-15	2	11-05		-4	-5	-2	-6	-3	-2	-2	-4	0	-1	2	-1
	DK	-11	10-90	7	18	12-05		14	16	17	14	14	14	13	13	15	16	17	18
	DE	-28	10-93	-11	6	05-00		-12	-15	-18	-15	-14	-15	-17	-15	-14	-11	-12	-8
	EE	-56	04-93	-23	7	12-05		-12	-10	-5	-8	-8	-6	-2	-4	-10	1	3	7
	EL	-44	07-03	-30	-6	04-00		-32	-32	-33	-35	-31	-36	-32	-33	-35	-37	-36	-36
	ES	-37	10-92	-11	6	03-00		-9	-10	-10	-11	-11	-12	-11	-12	-11	-11	-13	-10
	FR	-34	08-93	-18	4	01-01		-17	-14	-14	-17	-21	-17	-16	-15	-13	-15	-16	-16
	IE	-31	03-93	-4	19	01-00		7	4	7	1	-1	1	4	1	-4	-3	1	3
	IT	-38	04-93	-13	2	06-01		-16	-18	-18	-16	-17	-19	-21	-21	-21	-20	-17	-17
	CY	-43	07-04	-29	-13	06-01		-34	-36	-35	-38	-35	-39	-41	-40	-40	-35	-35	-37
	LV	-45	02-93	-24	-7	09-01		-16	-12	-11	-14	-12	-14	-16	-14	-15	-14	-12	-11
	LT	-32	05-01	-13	-1	10-04		-5	-3	-5	-1	-4	-3	-4	-6	-7	-5	-1	-2
	LU	-4	09-05	3	14	02-02		6	2	4	3	2	-2	-1	-1	-4	-2	1	-1
	HU	-58	04-95	-28	0	08-02		-21	-21	-24	-28	-30	-32	-27	-26	-24	-26	-21	-17
	NL	-19	07-93	4	31	03-00		-4	-4	-3	2	-4	-5	-4	-7	-7	-2	-2	3
	AT	-16	04-96	-2	11	07-00		1	-3	-2	0	-3	-3	-4	-4	-5	-3	-2	-3
	PL	-40	08-01	-29	-14	12-05		-20	-19	-18	-18	-21	-23	-23	-22	-20	-18	-15	-14
	PT	-49	03-03	-23	-1	07-91		-35	-34	-31	-30	-31	-39	-42	-42	-41	-41	-40	-41
SI	-29	06-99	-19	-9	10-04		-20	-13	-15	-13	-13	-18	-18	-17	-21	-22	-26	-24	
SK	-50	08-99	-30	-9	06-05		-13	-13	-13	-10	-12	-9	-12	-14	-24	-18	-12	-14	
FI	6	11-01	15	23	02-00		13	16	17	14	14	10	12	15	13	16	17	17	
SE	-10	09-96	7	25	03-00		8	8	7	6	5	3	3	4	6	8	8	10	
UK	-28	10-92	-8	7	10-97		0	0	3	0	-3	-3	-1	-2	-3	-4	-4	-4	
FINANCIAL SITUATION OF HOUSEHOLDS OVER NEXT 12 MONTHS	EU	-10	12-93	-1	5	04-01		0	0	0	0	-1	-1	-1	-1	-2	-2	-1	
	Euro area	-11	07-93	-2	5	03-00		-3	-2	-3	-3	-4	-4	-4	-4	-5	-5	-4	
	BE	-9	12-93	2	13	08-00		5	7	6	4	3	3	3	3	1	4	4	5
	CZ	-32	02-98	-9	2	05-02		-4	-3	-3	-6	-2	-3	0	-2	-4	-1	-1	-2
	DK	2	12-90	12	39	10-00		15	15	17	15	15	15	15	17	14	15	14	15
	DE	-15	02-94	-5	4	05-00		-2	-3	-4	-4	-6	-6	-7	-6	-8	-5	-5	-5
	EE	-38	04-93	-10	11	01-03		-3	-2	3	1	2	4	9	5	-6	9	8	11
	EL	-31	08-92	-15	10	04-00		-17	-17	-19	-20	-17	-22	-18	-20	-24	-24	-22	-23
	ES	-16	10-92	1	10	10-99		0	-1	-1	-2	-1	-2	0	0	-1	-1	-3	1
	FR	-12	12-95	-1	6	01-01		-3	-2	-1	-2	-3	-2	-2	-1	0	-5	-6	-4
	IE	-13	02-93	1	16	01-00		4	2	4	-1	-1	1	1	-1	-5	-2	1	2
	IT	-15	04-93	-1	7	07-01		-4	-4	-4	-2	-2	-3	-4	-4	-4	-4	-3	-2
	CY	-35	06-04	-16	0	06-01		-24	-27	-25	-30	-27	-25	-32	-31	-32	-32	-30	-32
	LV	-29	09-93	-7	9	08-02		2	3	6	4	6	2	3	2	-1	2	3	4
	LT	-10	10-01	0	7	06-05		2	3	4	6	2	7	5	4	3	3	6	4
	LU	0	10-05	6	12	06-02		6	4	9	3	7	3	3	3	1	0	2	0
	HU	-63	04-95	-22	16	08-02		-7	-7	-10	-13	-16	-18	-11	-9	-9	-11	-7	-2
	NL	-11	12-04	3	16	12-99		-5	-5	-6	-2	-5	-7	-3	-10	-10	-8	-8	-6
	AT	-18	04-96	-4	4	04-99		-1	-1	-2	-2	-3	-3	-4	-4	-8	-3	-5	-2
	PL	-20	08-01	-11	-2	11-05		-5	-3	-3	-3	-5	-8	-8	-6	-5	-6	-2	-3
	PT	-26	03-03	-8	11	01-92		-16	-18	-15	-15	-14	-21	-23	-23	-23	-22	-22	-21
SI	-30	06-99	-11	-2	11-96		-7	-4	-6	-4	-4	-10	-9	-6	-11	-12	-18	-17	
SK	-44	08-99	-24	-7	06-05		-11	-8	-10	-8	-9	-7	-9	-13	-22	-16	-9	-9	
FI	-8	04-93	6	13	10-04		10	13	11	11	11	10	12	12	9	11	12	11	
SE	-13	09-96	7	18	07-02		15	12	16	12	14	14	13	13	13	14	15	16	
UK	-23	03-90	2	16	09-02		10	10	11	10	10	9	10	11	10	8	8	8	
GENERAL ECONOMIC SITUATION OVER NEXT 12 MONTHS	EU	-32	03-93	-12	1	04-00		-12	-11	-10	-12	-15	-15	-17	-15	-14	-14	-15	
	Euro area	-35	03-93	-13	4	04-00		-13	-13	-13	-14	-17	-17	-19	-17	-16	-15	-17	
	BE	-46	07-93	-11	20	06-00		-5	-1	2	-5	-16	-18	-18	-13	-22	-8	-11	
	CZ	-40	09-97	-11	8	11-05		2	2	2	0	1	3	3	3	8	5	8	2
	DK	-23	02-99	-2	23	07-01		6	10	13	5	6	6	2	5	6	8	9	6
	DE	-41	03-93	-16	6	02-99		-16	-19	-23	-21	-20	-21	-24	-20	-19	-14	-16	-8
	EE	-38	04-93	-4	25	03-03		8	11	11	7	8	5	9	8	-4	15	16	22
	EL	-37	12-03	-16	17	01-00		-20	-21	-19	-24	-20	-29	-21	-25	-24	-31	-27	-28
	ES	-38	10-92	-5	11	08-97		-2	-4	-5	-7	-9	-9	-7	-8	-7	-7	-14	-9
	FR	-37	01-91	-17	5	01-01		-18	-15	-10	-17	-26	-15	-22	-17	-11	-22	-25	-22
	IE	-33	12-02	-2	22	01-00		6	0	6	-3	-3	-5	-1	-7	-15	-10	-4	-1
	IT	-40	04-93	-9	13	02-95		-11	-12	-12	-10	-14	-20	-20	-19	-20	-17	-14	-11
	CY	-45	06-04	-23	-7	05-01		-32	-31	-33	-38	-35	-31	-35	-34	-32	-24	-22	-24
	LV	-27	06-95	-7	11	05-03		0	6	9	3	5	0	-3	-2	-3	-4	-5	1
	LT	-18	05-01	2	16	10-04		9	10	8	11	9	8	6	1	-4	-2	4	3
	LU	-30	09-05	-8	7	02-02		1	-5	0	-4	-7	-20	-16	-20	-30	-26	-20	-25
	HU	-53	04-95	-14	19	08-02		-5	-5	-8	-13	-16	-18	-11	-7	-8	-8	-6	0
	NL	-42	03-93	-8	26	03-00		-13	-6	-4	4	-6	-11	-6	-14	-12	-6	-6	-2
	AT	-26	04-96	-6	8	11-99		-2	-6	-4	-4	-8	-7	-10	-10	-13	-11	-9	-5
	PL	-35	08-01	-21	-1	12-05		-10	-7	-7	-5	-11	-12	-8	-8	-8	-3	-1	-1
	PT	-52	03-03	-16	12	01-92		-29	-24	-18	-17	-18	-35	-38	-39	-38	-37	-34	-36
SI	-22	11-05	-9	7	10-04		-5	0	-4	4	1	-5	-7	-6	-11	-11	-22	-20	
SK	-51	09-99	-30	-2	06-05		-8	-6	-3	-3	-6	-2	-6	-9	-24	-18	-10	-12	
FI	-24	04-91	6	28	01-95		3	5	8										

TABLE 4 (continued): Consumer opinion on economic and financial conditions (s.a.)^(a)

		Since 01/1990						2005											
		Min.		Ave.		Max.		Jan.	Feb.	Mar.	Apr.	May	June	July	Aug.	Sep.	Oct.	Nov.	Dec.
		Value	Date	Value	Date	Value	Date												
SAVINGS OVER NEXT 12 MONTHS	EU	-15	08-93	-4	4	04-01	-3	-4	-4	-4	-4	-3	-4	-4	-4	-5	-4	-5	
	Euro area	-14	08-93	-5	4	03-01	-7	-8	-9	-8	-7	-7	-9	-8	-9	-9	-8	-9	
Component of the consumer confidence indicator	BE	-2	12-93	13	31	06-98	15	16	16	17	13	14	12	11	6	10	7	15	
	CZ	-16	03-98	-4	11	08-03	6	2	5	0	-1	4	0	1	10	3	9	6	
	DK	-3	01-90	23	39	04-05	37	37	38	39	38	39	39	32	36	34	38	36	
	DE	-5	03-03	7	23	08-90	5	5	0	2	1	-1	-2	1	-1	0	1	1	
	EE	-69	10-93	-49	-11	08-01	-37	-36	-28	-32	-33	-29	-24	-27	-31	-23	-22	-16	
	EL	-57	07-95	-44	-23	01-00	-47	-47	-45	-48	-48	-47	-47	-45	-48	-47	-47	-48	
	ES	-34	01-90	-19	0	07-00	-25	-24	-20	-23	-22	-25	-25	-26	-27	-23	-23	-18	
	FR	-36	03-96	-23	-7	04-04	-16	-15	-14	-18	-15	-14	-13	-12	-11	-15	-17	-20	
	IE	-32	03-93	-1	28	02-02	21	20	21	19	17	20	19	21	18	13	17	24	
	IT	-39	10-04	-16	2	03-91	-30	-35	-36	-29	-24	-21	-29	-32	-29	-28	-26	-33	
	CY	-55	06-02	-42	-13	06-01	-38	-43	-38	-42	-33	-49	-46	-48	-42	-44	-42	-45	
	LV	-90	03-96	-55	13	01-94	-52	-50	-50	-52	-48	-50	-50	-49	-52	-49	-44	-48	
	LT	-55	05-01	-46	-35	04-05	-42	-40	-43	-35	-42	-42	-38	-42	-44	-38	-38	-37	
	LU	40	05-05	48	58	10-05	46	46	44	46	40	53	46	48	48	58	52	54	
	HU	-70	11-95	-53	-19	01-00	-45	-45	-44	-47	-48	-50	-44	-46	-45	-47	-41	-39	
	NL	17	09-05	38	55	10-99	32	24	22	25	24	29	21	22	17	18	21	24	
	AT	-11	11-00	32	55	03-02	33	27	27	29	29	29	33	30	32	36	39	29	
	PL	-67	09-03	-51	-22	09-01	-52	-50	-49	-50	-49	-48	-53	-53	-51	-50	-49	-46	
	PT	-55	12-05	-34	-14	01-92	-50	-51	-51	-49	-48	-51	-51	-54	-53	-55	-55	-55	
	SI	-52	06-99	-28	-15	06-03	-25	-25	-18	-22	-20	-25	-21	-22	-17	-21	-21	-24	
SK	-70	08-01	-41	-29	08-00	-36	-37	-41	-34	-35	-32	-37	-31	-40	-38	-33	-33		
FI	19	01-96	38	53	05-04	46	50	51	49	53	50	49	51	51	51	51	53		
SE	11	06-98	29	46	06-00	28	30	33	29	26	29	31	29	31	35	31	34		
UK	-26	10-92	-5	17	03-05	15	14	17	17	12	14	16	17	16	15	14	14		
UNEMPLOYMENT OVER NEXT 12 MONTHS	EU	-2	12-00	26	56	03-93	25	26	27	26	28	30	27	27	26	23	23	19	
	Euro area	-3	01-01	28	60	08-93	28	30	31	29	31	33	30	29	28	23	23	19	
Component of the consumer confidence indicator	BE	-19	12-00	28	63	10-93	37	33	30	32	43	44	42	41	41	31	34	33	
	CZ	4	05-01	35	64	03-99	21	19	14	18	9	13	9	17	14	11	8	8	
	DK	-19	11-97	7	38	12-92	2	-2	-1	3	3	5	3	2	-5	-5	-7	-13	
	DE	-3	01-01	30	58	10-93	34	43	44	37	31	35	34	33	30	26	28	19	
	EE	-12	12-05	33	80	04-93	15	14	6	6	8	5	0	2	1	-2	-8	-12	
	EL	24	04-90	44	62	12-98	43	43	47	47	40	46	42	41	43	44	46	44	
	ES	-8	03-00	18	67	01-93	8	10	12	11	13	13	12	14	10	12	13	12	
	FR	-14	01-01	31	64	03-03	32	25	32	32	40	38	27	29	32	17	17	17	
	IE	-29	12-99	15	58	04-92	4	7	4	11	17	12	4	8	15	14	12	13	
	IT	-2	06-01	27	70	04-93	19	21	22	22	26	32	32	31	29	28	24	21	
	CY	26	05-01	37	53	09-05	41	42	46	43	46	50	50	49	53	39	47	47	
	LV	0	12-05	27	54	01-93	13	6	7	12	9	8	12	5	6	5	1	0	
	LT	-23	11-05	8	46	05-01	-12	-14	-11	-13	-15	-17	-13	-13	-15	-17	-23	-22	
	LU	14	02-02	34	45	06-03	27	37	36	33	31	42	36	36	37	38	31	35	
	HU	-3	07-98	28	59	02-93	26	27	33	36	40	44	41	40	35	37	32	28	
	NL	-35	07-98	18	77	03-93	28	28	25	19	29	33	29	26	23	11	15	4	
	AT	-9	11-00	27	49	12-96	27	32	29	24	30	29	33	33	32	34	32	34	
	PL	7	12-05	36	64	05-01	12	15	15	14	21	24	24	20	16	13	9	7	
	PT	-10	08-97	33	73	10-93	46	43	40	40	42	48	55	53	51	51	51	53	
	SI	7	09-01	26	44	09-05	40	24	31	28	29	31	33	34	44	43	42	36	
SK	-4	01-05	25	68	08-99	-4	-1	-1	-3	-3	-4	-3	2	8	-1	-3	1		
FI	-31	01-95	-1	42	07-91	7	3	3	7	9	14	13	7	6	0	-4	-3		
SE	-26	03-00	7	39	11-01	10	10	18	13	17	24	24	21	14	13	16	9		
UK	-11	04-98	21	53	02-91	16	17	16	21	23	22	21	24	24	25	25	23		
FINANCIAL SITUATION OF HOUSEHOLDS OVER LAST 12 MONTHS	EU	-19	01-94	-10	-2	05-00	-11	-11	-11	-11	-12	-12	-13	-12	-12	-12	-12		
	Euro area	-20	02-03	-11	-1	05-90	-14	-13	-14	-14	-15	-15	-16	-15	-15	-15	-14		
	BE	-16	12-93	-6	4	11-00	-5	-4	-4	-5	-8	-4	-7	-7	-7	-6	-6		
	CZ	-30	02-98	-15	-5	05-96	-13	-10	-10	-15	-11	-8	-10	-11	-11	-7	-8		
	DK	-5	04-01	6	16	02-05	13	16	16	14	10	10	12	14	12	14	13		
	DE	-31	12-02	-12	4	05-90	-11	-11	-11	-12	-12	-13	-15	-12	-13	-13	-11		
	EE	-54	04-93	-17	7	10-05	-1	-1	3	0	-1	1	6	5	-3	7	6		
	EL	-43	01-93	-28	-6	04-00	-30	-29	-28	-28	-27	-34	-31	-31	-29	-32	-31		
	ES	-28	01-94	-8	4	04-00	-8	-9	-11	-10	-10	-9	-9	-10	-10	-10	-8		
	FR	-18	06-96	-10	-2	01-01	-12	-11	-13	-12	-14	-14	-14	-13	-12	-16	-18		
	IE	-25	02-93	-7	11	04-00	-1	-2	0	-6	-3	-5	-4	-5	-7	-9	-3		
	IT	-30	02-04	-14	-1	05-90	-24	-23	-23	-23	-26	-27	-27	-25	-23	-24	-21		
	CY	-36	10-05	-18	-5	07-03	-23	-24	-25	-29	-29	-27	-31	-29	-32	-36	-35		
	LV	-57	01-93	-22	-3	12-05	-8	-6	-5	-7	-3	-8	-8	-6	-8	-6	-8		
	LT	-29	06-01	-13	3	12-05	-4	-2	-3	-1	-1	0	2	-1	-2	-1	2		
	LU	-3	10-05	1	8	01-02	2	0	-1	-1	4	1	1	0	-1	-3	-1		
	HU	-65	11-95	-36	0	08-02	-25	-26	-22	-26	-29	-30	-25	-25	-25	-24	-23		
	NL	-25	03-05	0	17	02-00	-21	-23	-25	-23	-21	-18	-19	-21	-22	-20	-16		
	AT	-23	11-02	-13	-2	08-99	-18	-17	-14	-16	-16	-16	-15	-15	-18	-15	-17		
	PL	-35	08-01	-24	-13	05-05	-16	-17	-15	-15	-13	-18	-19	-17	-16	-19	-14		
	PT	-29	04-03	-13	3	01-92	-21	-21	-21	-19	-20	-22	-24	-24	-25	-23	-22		
	SI	-36	06-99	-26	-14	05-05	-17	-19	-20	-17	-14	-18	-19	-20	-21	-23	-21		
SK	-43	10-99	-28	-12	06-05	-21	-17	-16	-16	-15	-12	-16	-15	-20	-18	-17			
FI	-22	04-93	0	9	04-05	7	6	8	9	7	5	5	7	7	7	7			
SE	-13	11-95	2	10	06-00	5	3	6	4	5	4	5	7	4	6	6			
UK	-																		

TABLE 4 (continued): Consumer opinion on economic and financial conditions (s.a.)^(a)

		Since 01/1990						2005											
		Min.		Ave.		Max.		Jan.	Feb.	Mar.	Apr.	May	June	July	Aug.	Sep.	Oct.	Nov.	Dec.
		Value	Date	Value	Date	Value	Date												
GENERAL ECONOMIC SITUATION OVER LAST 12 MONTHS	EU	-55	03-93	-27	-4	05-00		-29	-28	-29	-30	-31	-34	-35	-33	-33	-34	-33	-30
	Euro area	-58	07-93	-29	-2	05-00		-34	-33	-34	-36	-37	-40	-41	-39	-38	-39	-37	-34
	BE	-61	08-93	-25	22	12-00		-20	-14	-11	-17	-29	-37	-36	-32	-41	-30	-28	-27
	CZ	-54	12-97	-21	3	10-95		-11	-11	-7	-10	-7	-3	-5	-4	-1	-2	-1	-1
	DK	-25	04-93	0	23	11-05		14	16	19	16	15	15	18	20	19	22	23	22
	DE	-60	05-03	-28	12	01-90		-33	-34	-39	-40	-37	-42	-42	-39	-40	-38	-36	-31
	EE	-72	10-92	-11	20	01-03		11	7	12	5	8	8	11	7	6	12	17	19
	EL	-50	05-90	-31	6	05-00		-33	-33	-30	-30	-28	-38	-32	-37	-34	-38	-35	-34
	ES	-61	08-93	-16	13	03-00		-13	-15	-16	-18	-16	-18	-16	-20	-21	-22	-21	-17
	FR	-57	10-96	-36	-1	01-01		-39	-37	-37	-40	-42	-38	-46	-42	-37	-47	-50	-46
	IE	-59	03-93	-5	42	08-99		7	4	7	-1	-2	-3	2	-4	-12	-9	-2	4
	IT	-74	04-93	-39	-8	05-90		-48	-46	-47	-51	-55	-61	-60	-54	-55	-54	-46	-44
	CY	-41	07-04	-26	-13	01-02		-32	-31	-32	-38	-37	-30	-31	-31	-32	-30	-28	-28
	LV	-59	01-93	-24	3	12-03		-11	-6	-6	-11	-6	-13	-14	-16	-16	-17	-16	-15
	LT	-41	05-01	-10	6	10-04		3	4	3	5	2	4	4	-1	-6	-3	3	2
	LU	-36	06-03	-23	-2	01-02		-11	-20	-16	-20	-15	-23	-23	-26	-28	-28	-27	-25
	HU	-71	04-95	-32	6	09-02		-22	-24	-22	-28	-32	-33	-25	-23	-21	-23	-23	-21
	NL	-73	03-03	-13	45	03-00		-44	-40	-35	-30	-32	-37	-39	-41	-41	-32	-28	-25
	AT	-50	02-97	-24	8	07-00		-22	-28	-25	-22	-24	-26	-29	-31	-31	-30	-27	-24
	PL	-55	09-01	-39	-10	11-05		-22	-21	-20	-17	-20	-22	-19	-14	-18	-15	-10	-11
	PT	-60	03-03	-25	13	10-91		-51	-51	-49	-46	-44	-49	-54	-55	-55	-55	-53	-52
	SI	-39	09-98	-28	-14	04-05		-26	-19	-22	-14	-16	-22	-24	-22	-31	-29	-28	-28
	SK	-69	10-99	-40	-10	06-05		-22	-16	-11	-12	-13	-10	-13	-13	-21	-23	-19	-18
	FI	-65	01-92	-4	30	08-98		4	7	7	2	-1	-6	-4	2	-2	4	4	3
	SE	-25	04-03	-6	25	03-00		1	-2	-4	-6	-6	-9	-10	-6	-7	-6	-3	3
	UK	-67	11-92	-25	5	10-97		-17	-14	-13	-13	-14	-19	-17	-19	-23	-22	-25	-27
SAVINGS AT PRESENT ^(c)	EU	:	:	:	:	:		:	:	:	:	:	:	:	:	:	:	:	:
	Euro area	:	:	:	:	:		:	:	:	:	:	:	:	:	:	:	:	:
	BE	-45	12-03	42	70	02-01		-27	-24	-29	-28	-10	-16	-20	-28	-32	-30	-32	-28
	CZ	-35	01-03	-15	15	03-01		-19	-19	-18	-20	-20	-21	-16	-18	-12	-9	-9	-10
	DK	51	01-90	65	78	07-92		73	68	71	69	73	73	69	67	69	68	74	72
	DE	29	11-92	45	61	09-02		45	45	42	44	42	45	43	45	45	46	47	46
	EE	-58	09-96	-36	-14	08-01		-29	-27	-23	-23	-27	-23	-23	-24	-26	-20	-19	-17
	EL	-70	10-05	-46	-18	01-00		-61	-64	-61	-60	-60	-62	-63	-59	-64	-70	-65	-63
	ES	-33	12-03	27	59	08-96		-20	-18	-19	-20	-21	-24	-21	-25	-27	-26	-25	-24
	FR	2	12-05	41	61	06-95		15	14	15	17	12	13	9	11	13	7	8	2
	IE	-2	03-93	21	56	12-01		38	35	44	38	34	37	37	39	31	32	35	39
	IT	26	06-04	45	59	06-96		40	46	47	46	46	56	54	51	54	54	58	59
	CY	-37	07-04	-13	9	06-01		-7	-2	9	-7	-4	-11	-16	-23	-7	-11	-22	-23
	LV	-78	12-95	-58	-28	09-01		-49	-50	-49	-53	-53	-55	-53	-50	-56	-56	-52	-55
	LT	-50	10-05	-39	-27	05-02		-37	-41	-40	-40	-44	-43	-46	-48	-49	-50	-48	-46
	LU	45	04-03	54	63	01-03		54	59	59	57	50	58	57	58	55	57	54	53
	HU	-83	11-95	-65	-28	12-00		-54	-51	-54	-52	-54	-57	-52	-55	-53	-54	-52	-53
	NL	47	06-91	61	70	09-96		64	61	62	63	59	64	62	62	63	63	61	61
	AT	17	12-96	42	64	09-02		57	52	51	52	53	51	54	54	55	56	57	50
	PL	-49	09-01	-37	-26	11-05		-38	-35	-30	-34	-33	-34	-38	-32	-33	-32	-26	-32
	PT	-64	10-05	-40	-13	01-92		-61	-63	-62	-63	-60	-63	-64	-63	-64	-64	-64	-63
	SI	-25	09-97	-12	-1	08-04		-7	-9	-5	-3	-1	-7	-5	-2	-3	-3	-7	-12
	SK	-55	10-04	-47	-36	03-00		-50	-50	-46	-47	-48	-47	-49	-50	-51	-54	-52	-50
	FI	-23	04-94	4	22	10-92		14	15	16	18	13	14	13	14	12	18	13	16
	SE	-9	09-01	6	20	01-00		-2	-1	-1	1	2	3	2	5	4	8	6	9
	UK	-16	03-03	12	36	05-90		25	24	28	28	25	25	26	22	26	26	22	24
MAJOR PURCHASES OVER NEXT 12 MONTHS	EU	-21	07-93	-16	-10	03-00		-17	-17	-17	-16	-18	-17	-17	-17	-18	-17	-17	-17
	Euro area	-21	07-93	-17	-12	03-00		-18	-18	-18	-18	-19	-18	-18	-18	-19	-19	-18	-18
	BE	-29	10-96	-15	-6	10-03		-14	-14	-14	-16	-14	-14	-14	-14	-13	-13	-12	-11
	CZ	-36	01-01	-24	-6	11-05		-14	-11	-17	-8	-16	-9	-10	-11	-14	-12	-6	-9
	DK	-14	01-93	-6	1	11-04		0	0	0	1	-2	-4	-1	0	1	-3	-2	-2
	DE	-39	02-03	-26	-14	01-90		-30	-30	-29	-31	-30	-29	-30	-28	-29	-29	-26	-27
	EE	-64	10-92	-25	-3	12-05		-10	-12	-15	-11	-16	-14	-8	-9	-11	-3	-10	-3
	EL	-60	10-05	-23	5	06-03		-23	-21	-21	-21	-22	-18	-32	-32	-49	-60	-47	-37
	ES	-48	11-93	-24	-7	11-00		-23	-26	-23	-20	-23	-20	-22	-24	-24	-24	-24	-22
	FR	-6	12-05	-1	1	09-99		-3	-4	-5	-4	-5	-5	-5	-5	-5	-5	-6	-6
	IE	-20	05-93	-9	2	12-00		-6	-4	-3	-6	-3	-4	-5	-6	-7	-5	-7	-2
	IT	-23	10-92	-17	-9	04-05		-13	-9	-11	-9	-14	-15	-12	-13	-14	-12	-17	-15
	CY	-5	03-04	11	39	03-03		7	7	-4	2	10	7	4	-3	5	-3	-5	4
	LV	-84	03-96	-41	17	09-05		3	-1	6	1	5	4	6	14	17	16	16	15
	LT	-18	12-02	-9	2	12-05		-6	-9	-5	-6	-4	-3	-3	-2	-3	-2	1	2
	LU	-19	06-05	-13	-6	01-02		-11	-12	-12	-12	-18	-19	-11	-13	-17	-11	-11	-15
	HU	-69	06-95	-37	-8	08-02		-23	-22	-22	-24	-29	-28	-25	-24	-22	-24	-19	-17
	NL	-25	03-03	-14	-4	11-98		-17	-17	-20	-17	-22	-17	-19	-16	-19	-17	-16	-16
	AT	-26	11-04	-17	-4	11-00		-22	-22	-19	-21	-21	-16	-21	-18	-26	-23	-23	-20
	PL	-25	09-01	-8	1	09-04		-4	-6	-7	-7	-7	-8	-6	-8	-7	-6	-6	-6
	PT																		

TABLE 4 (continued) : Consumer opinion on economic and financial conditions (s.a.)^(a)

		Since 01/1990						2005											
		Min.		Ave.		Max.		Jan.	Feb.	Mar.	Apr.	May	June	July	Aug.	Sep.	Oct.	Nov.	Dec.
		Value	Date	Value	Date	Value	Date												
MAJOR PURCHASES AT PRESENT	EU	-22	07-93	-11	6	01-00	-13	-12	-12	-13	-13	-14	-14	-13	-14	-14	-13	-12	
	Euro area	-28	03-03	-15	6	03-99	-20	-19	-18	-20	-18	-21	-21	-20	-21	-20	-19	-18	
	BE	-40	06-97	-4	26	12-00	18	19	19	20	16	11	12	19	4	15	15	15	
	CZ	-33	05-95	0	34	07-03	9	14	13	24	20	25	18	21	22	20	13	13	
	DK	-27	01-93	-7	10	09-97	0	-5	1	-7	-10	-11	-5	-2	-3	-2	-1	-8	
	DE	-31	11-02	-11	6	04-99	-15	-14	-13	-18	-14	-17	-14	-12	-15	-12	-12	-8	
	EE	0	04-01	15	48	04-04	36	37	36	38	38	42	39	37	33	40	37	38	
	EL	-68	10-05	-36	-10	01-01	-46	-45	-37	-44	-45	-59	-50	-51	-58	-68	-52	-50	
	ES	-64	06-93	-17	26	11-99	-20	-22	-19	-22	-22	-23	-23	-26	-26	-22	-25	-24	
	FR	-39	12-95	-14	14	07-00	-14	-9	-11	-9	-12	-15	-19	-16	-13	-15	-18	-17	
	IE	-22	04-92	14	40	09-97	26	21	28	22	26	24	19	19	17	15	17	17	
	IT	-64	11-96	-33	-2	05-90	-49	-53	-51	-53	-44	-41	-47	-50	-45	-42	-40	-43	
	CY	-19	10-01	0	24	11-04	3	-4	-9	-5	1	1	-3	-9	-10	-9	-12	-8	
	LV	-81	06-96	-41	19	11-05	5	1	-1	2	2	2	1	11	9	19	19	8	
	LT	-10	05-01	20	45	11-05	30	33	39	34	36	39	38	37	40	43	45	38	
	LU	-17	06-04	-9	0	06-05	-2	-7	-7	-8	-4	0	-9	-10	-10	-2	-3	-5	
	HU	-87	06-96	-55	-9	10-02	-17	-16	-17	-15	-21	-18	-14	-17	-14	-17	-12	-18	
	NL	-39	04-03	5	54	02-00	-24	-28	-26	-26	-26	-33	-29	-29	-32	-34	-33	-31	
	AT	-14	07-02	7	29	08-99	-6	-7	-6	-5	-3	-2	-7	-5	-10	-9	-2	3	
	PL	-27	11-01	-9	3	11-03	-2	-7	-4	-2	-2	-1	-3	-1	-2	-7	2	1	
	PT	-64	09-05	-33	-2	01-92	-56	-58	-57	-58	-57	-60	-58	-62	-64	-61	-61	-62	
	SI	-50	04-97	-22	10	05-99	-6	-9	-8	-5	-1	-1	3	-7	-8	-7	-2	-8	
	SK	-25	02-04	-10	4	08-99	-13	-13	-15	-15	-10	-11	-10	-8	-14	-15	-11	-13	
	FI	-27	04-90	17	39	08-03	27	27	26	24	26	24	26	26	22	26	24	21	
	SE	2	11-95	19	36	08-05	28	29	30	29	27	27	28	36	31	35	28	32	
	UK	-22	05-90	8	28	11-02	8	14	12	12	5	6	9	7	9	4	8	6	
PRICE TRENDS OVER NEXT 12 MONTHS	EU	6	06-03	23	49	01-91	8	9	9	10	11	11	16	14	16	16	16	15	
	Euro area	3	04-04	23	51	01-91	8	9	9	10	12	13	17	14	15	17	17	15	
	BE	-4	09-02	20	46	10-01	13	14	15	20	17	18	17	17	23	18	16	15	
	CZ	11	05-05	45	72	03-98	17	15	18	14	11	15	24	25	25	16	17	22	
	DK	-29	08-93	-11	28	08-02	-8	-19	-15	-9	-14	-14	-8	-7	6	-9	2	5	
	DE	5	12-04	32	58	03-91	8	8	9	9	11	19	14	18	16	21	20	20	
	EE	23	04-93	48	88	05-04	56	53	51	56	51	55	57	60	75	52	44	41	
	EL	0	03-04	38	60	05-90	17	18	19	17	17	36	33	36	38	38	39	33	
	ES	-4	11-98	14	36	01-02	21	16	18	23	28	27	27	30	30	31	30	25	
	FR	-13	08-97	11	54	01-91	10	15	13	11	17	15	20	15	10	20	19	19	
	IE	6	01-94	22	42	10-00	20	20	15	21	24	23	27	30	36	28	18	20	
	IT	-23	12-04	21	62	02-91	-17	-12	-12	-9	-7	-13	-9	-13	-8	-3	-11	-14	
	CY	28	11-05	47	68	09-02	39	37	36	45	43	38	47	47	47	28	28	29	
	LV	16	03-00	33	70	03-04	41	41	39	45	46	52	50	49	50	53	49	49	
	LT	14	02-03	44	75	05-04	54	52	51	48	56	55	62	64	65	60	55	57	
	LU	3	06-03	14	26	03-03	11	16	16	15	19	20	19	21	25	23	25	24	
	HU	34	07-98	50	65	05-95	49	46	46	49	47	50	49	46	47	49	44	38	
	NL	-28	12-02	24	60	01-91	9	12	16	4	8	12	13	16	18	14	21	15	
	AT	-19	12-95	15	41	09-01	26	23	21	26	26	29	31	29	35	29	29	25	
	PL	7	04-05	32	54	04-04	23	16	16	7	19	21	24	25	32	28	25	15	
	PT	-9	08-97	33	56	03-03	36	36	37	36	32	50	48	47	47	48	46	39	
	SI	16	01-05	42	62	04-00	16	20	19	19	17	28	31	29	30	31	40	39	
	SK	20	05-05	50	78	11-02	27	28	23	26	20	21	21	32	49	41	34	36	
	FI	-21	12-95	11	40	09-01	20	19	21	24	20	24	25	26	29	26	23	25	
	SE	-14	03-05	12	34	04-03	8	9	-14	3	0	4	8	13	5	10	14	20	
	UK	5	03-05	26	57	09-90	5	6	5	7	6	7	11	9	16	11	9	13	
PRICE TRENDS OVER LAST 12 MONTHS	EU	-5	03-99	23	46	01-03	28	29	28	29	27	27	28	27	30	30	28	28	
	Euro area	-4	01-99	27	62	01-03	37	38	38	39	37	36	38	37	39	40	38	37	
	BE	-1	06-98	35	56	09-05	54	55	53	56	54	52	53	53	56	56	51	50	
	CZ	-33	08-03	23	63	03-98	-15	-17	-16	-17	-22	-16	-13	-15	-13	-9	-18	-16	
	DK	-51	09-93	-25	-1	02-90	-30	-35	-33	-28	-28	-29	-30	-24	-21	-24	-23	-24	
	DE	-3	03-99	31	74	08-02	20	23	22	25	20	21	25	25	32	31	31	29	
	EE	-1	04-03	34	58	09-05	52	48	52	52	53	50	49	52	58	57	53	45	
	EL	5	06-99	41	76	08-03	67	67	66	61	55	64	66	64	69	70	69	70	
	ES	-5	06-97	31	65	03-03	51	52	53	52	52	52	52	53	53	51	52	51	
	FR	-23	01-99	14	54	01-04	47	49	51	49	50	51	49	46	43	45	47	46	
	IE	-3	07-97	30	66	12-02	45	42	40	42	38	36	37	44	45	45	35	38	
	IT	0	05-97	36	70	11-03	45	43	41	43	46	42	45	37	37	41	34	32	
	CY	21	08-01	42	62	02-04	51	47	41	51	50	46	42	50	60	50	46	53	
	LV	-31	09-96	25	68	12-05	51	50	53	55	62	62	58	60	63	64	68	68	
	LT	-17	10-03	11	40	09-05	24	26	24	25	32	26	31	35	40	37	36	37	
	LU	21	01-02	39	47	11-05	41	40	42	45	38	44	38	40	43	44	47	46	
	HU	9	12-02	41	71	06-95	19	20	20	23	22	25	20	18	19	21	16	15	
	NL	-3	04-90	28	89	12-02	34	33	31	33	30	20	24	27	30	27	25	21	
	AT	-48	02-96	7	46	01-03	39	35	39	42	40	38	40	36	40	38	39	38	
	PL	-4	05-03	19	45	10-04	37	33	31	24	29	29	24	27	29	31	22	19	
	PT	-6	08-97	38	61	10-90	43	42	41	42	40	42	47	48	49	46	46	42	
	SI	14	01-05	41	65	06-02	14	14	19										

TABLE 5: Monthly survey of retail trade (s.a.) ^{(a)(b)}

		Since 01/1990						2005											
		Min.		Ave.		Max.		Jan.	Feb.	Mar.	Apr.	May	June	July	Aug.	Sep.	Oct.	Nov.	Dec.
		Value	Date	Value	Date	Value	Date												
RETAIL TRADE	EU	-19	12-92	-8	4	07-90		-5	-7	-9	-9	-9	-11	-12	-9	-9	-6	-9	-6
CONFIDENCE	Euro area	-21	03-93	-9	8	08-90		-6	-8	-10	-8	-8	-9	-10	-9	-8	-4	-6	-4
INDICATOR	BE	-25	05-93	-6	13	04-90		1	-2	-10	-4	-10	-7	-10	-8	-9	0	-7	-4
	CZ	-1	02-99	14	26	08-02		17	20	19	14	15	16	16	15	19	20	24	22
	DK	-6	10-01	17	37	11-94		28	28	31	29	28	25	26	27	26	27	25	:
	DE	-44	01-03	-18	21	02-91		-17	-22	-30	-25	-23	-22	-25	-23	-25	-19	-24	-24
	EE	-1	04-03	18	30	04-04		18	20	22	25	22	22	28	21	22	24	23	26
	EL	-24	06-95	2	27	03-04		13	5	9	10	4	2	-1	1	5	5	4	12
	ES	-36	02-93	-7	10	06-00		-10	-12	-7	-2	-1	-6	-4	-4	-5	-4	-3	-5
	FR	-37	04-97	-16	6	10-04		-2	-3	0	1	-3	-5	-11	-9	-6	-5	-3	0
	IE	-21	05-03	3	24	06-00		-4	-8	-3	-11	-8	-1	-5	2	-10	-7	0	0
	IT	-19	10-96	8	39	10-95		10	14	12	3	13	6	16	19	24	30	22	26
	CY	-14	04-03	-5	5	04-05		-7	-3	0	5	1	-2	1	-3	-5	3	1	1
	LV	1	10-96	9	19	06-03		12	14	11	11	13	15	17	17	16	17	18	16
	LT	-25	09-00	-4	26	06-04		5	10	-5	-1	3	7	14	13	12	13	17	15
	HU	-28	05-05	-8	9	11-97		-20	-20	-28	-24	-28	-25	-17	-26	-13	-12	-12	-12
	NL	-16	12-03	12	30	10-99		-7	-10	-6	-4	-10	-8	-10	-9	-7	-3	-3	7
	AT	-29	03-03	-13	4	07-00		-15	-14	-10	-9	-15	-14	-13	-13	-10	-8	-9	-8
	PL	-19	01-02	-6	7	07-98		-2	-6	-7	-8	-7	-6	-6	-5	-5	-5	-1	-4
	PT	-27	01-03	-8	4	01-99		-7	-10	-7	-7	-10	-13	-17	-19	-19	-17	-20	-11
	SI	3	01-01	11	23	04-99		13	10	8	14	13	13	18	16	16	16	19	17
	SK	-17	10-93	8	34	11-98		8	5	12	15	12	20	16	12	15	16	22	24
	FI	-17	11-00	-4	10	05-04		-1	-8	-4	-1	1	6	4	2	7	10	9	6
	SE	-8	09-01	7	27	04-00		0	2	0	1	-2	3	7	11	13	14	17	21
	UK	-32	11-05	-5	20	06-04		-5	-9	-13	-19	-22	-28	-30	-21	-22	-23	-32	-23
PRESENT BUSINESS SITUATION	EU	-25	12-94	-8	18	04-90		-6	-11	-13	-12	-13	-17	-16	-14	-13	-9	-14	-7
	Euro area	-29	12-94	-10	21	01-91		-8	-14	-15	-12	-13	-16	-14	-14	-12	-9	-11	-5
	BE	-41	10-95	-6	29	06-00		1	-7	-16	-4	-15	-10	-12	-3	-16	-1	-7	-1
	CZ	0	11-98	28	53	12-05		49	52	49	39	39	39	40	40	41	44	49	53
Component of the retail confidence indicator	DK	-1	08-01	29	57	11-94		52	44	47	47	47	44	46	51	50	46	42	:
	DE	-66	02-02	-21	46	11-90		-23	-34	-37	-25	-27	-26	-25	-28	-27	-24	-29	-22
	EE	6	01-03	36	63	05-04		56	35	36	41	35	40	51	39	46	45	45	49
	EL	-50	04-95	-8	40	01-04		32	12	14	8	7	0	-8	-7	-6	0	-1	10
	ES	-72	07-93	-28	4	06-00		-31	-34	-34	-28	-26	-30	-21	-23	-21	-23	-25	-25
	FR	-50	03-93	-13	11	10-94		3	-2	-1	0	-8	-7	-19	-17	-14	-16	-12	-1
	IE	-30	05-03	6	37	06-98		-3	-4	-2	-10	-7	-3	-8	6	-5	-1	2	-5
	IT	-42	02-95	15	73	02-93		12	14	16	0	15	-10	17	18	21	34	29	27
	CY	-46	02-03	-29	-12	12-05		-34	-18	-22	-26	-14	-23	-18	-25	-34	-19	-16	-12
	LV	-18	07-96	5	32	07-03		20	22	14	17	20	28	25	26	27	24	26	25
	LT	-37	03-00	-11	43	06-04		10	14	-5	-2	9	5	15	16	19	18	14	10
	HU	-41	03-05	-7	16	03-98		-24	-19	-41	-37	-38	-32	-21	-36	-12	-12	-16	-13
	NL	-27	12-03	28	57	06-99		-7	-10	-11	-4	-11	-4	-10	-9	-9	0	-1	12
	AT	-36	04-03	-12	13	07-00		-14	-13	-19	-11	-19	-15	-9	-13	-6	-4	-9	-7
	PL	-36	01-01	-13	20	02-98		3	-8	-15	-12	-10	-6	-5	-4	-2	-4	2	-4
	PT	-46	01-03	-21	3	07-99		-26	-32	-26	-23	-28	-24	-31	-31	-32	-31	-36	-25
	SI	2	04-02	18	44	01-99		15	17	11	15	13	13	17	14	16	13	18	18
	SK	-35	06-95	11	58	11-98		2	-2	-1	19	10	11	10	14	26	17	35	37
	FI	-15	11-00	8	40	05-04		11	4	9	9	16	24	19	14	29	25	26	23
	SE	-21	10-96	8	43	12-05		7	9	3	-1	-2	9	9	17	26	26	32	43
	UK	-57	09-92	-6	42	06-04		-5	-8	-14	-22	-27	-34	-41	-29	-31	-26	-45	-34
VOLUME OF STOCKS	EU	11	01-91	16	22	03-02		12	14	15	16	13	16	16	14	15	14	17	17
	Euro area	7	01-91	16	23	10-96		11	13	13	14	11	14	15	13	15	13	16	16
	BE	-5	09-90	13	32	03-92		5	8	15	12	12	9	21	10	7	1	9	10
Component of the retail confidence indicator	CZ	0	03-00	10	27	05-95		8	13	13	17	13	14	12	13	14	14	10	8
	DK	-1	04-98	18	32	04-00		18	13	14	15	15	16	13	19	20	20	14	:
	DE	4	02-91	26	43	02-02		15	18	22	23	15	23	24	19	28	26	28	32
	EE	3	07-05	11	18	07-04		12	16	13	13	10	8	3	6	7	8	10	5
	EL	-7	11-02	13	41	12-93		12	18	21	20	25	16	16	15	14	15	16	11
	ES	-8	02-96	5	16	07-92		6	8	8	6	5	5	9	9	8	7	8	3
	FR	-3	10-93	11	21	09-98		14	14	8	8	8	6	10	10	10	9	10	9
	IE	-5	06-00	10	25	08-98		8	10	9	7	9	6	6	5	9	8	7	8
	IT	-8	10-99	8	43	10-96		-2	3	1	5	5	11	2	0	-1	-3	6	4
	CY	-15	04-05	-6	6	03-05		-7	-1	6	-15	-14	-4	-7	-5	-11	-13	-13	-13
	LV	-18	07-96	-4	8	12-02		-1	0	0	3	3	1	0	-1	3	-1	3	2
	LT	-21	12-99	-1	13	10-96		3	2	13	-2	-1	-3	-6	-1	0	-1	1	1
	HU	4	02-96	22	33	01-99		24	23	21	17	24	21	16	16	23	19	14	18
	NL	5	07-97	12	19	06-05		16	16	17	16	16	19	16	16	15	16	15	12
	AT	-2	01-00	25	36	01-96		31	25	25	21	24	22	28	24	26	20	19	21
	PL	-9	09-03	-1	7	05-05		5	5	4	5	7	6	5	5	5	4	5	5
	PT	-3	12-03	9	25	06-90		5	2	2	3	5	5	4	12	11	10	14	9
	SI	-1	07-05	16	33	01-99		14	14	13	11	8	7	-1	4	4	3	1	1
	SK	-5	06-00	10	26	02-95		9	14	7	7	3	4	5	2	4	2	2	2
	FI	20	10-05	29	40	08-00		24	29	29	30	28	25	26	32	32	20	21	23
	SE	18	04-00	31	44	02-98		29	29	30	30	29	28	26	22	24	25	26	28
	UK	4	04-93	19	33	0													

TABLE 5 (continued): **Monthly survey of retail trade (s.a.)** ^{(a)(b)}

		Since 01/1990						2005											
		Min.		Ave.		Max.		Jan.	Feb.	Mar.	Apr.	May	June	July	Aug.	Sep.	Oct.	Nov.	Dec.
		Value	Date	Value	Date	Value	Date												
EXPECTED BUSINESS SITUATION	EU	-20	01-93	2	18	06-00	3	3	0	1	-1	-1	-4	0	3	7	5	7	
	Euro area	-26	02-93	-2	17	06-00	1	2	-1	1	1	2	-3	1	5	12	9	9	
Component of the retail confidence indicator	BE	-23	04-03	2	22	04-98	7	7	1	3	-5	0	3	-13	-3	1	-6	-2	
	CZ	2	09-00	23	46	02-02	10	22	21	22	18	21	18	18	30	31	31	20	
	DK	8	10-01	41	71	07-94	50	53	58	54	51	47	45	49	46	54	48	.	
	DE	-42	10-02	-8	26	12-90	-13	-14	-30	-26	-25	-17	-27	-23	-21	-5	-14	-18	
	EE	4	04-03	28	62	01-03	9	41	43	46	42	34	35	31	29	35	34	34	
	EL	-4	05-95	26	60	06-00	20	22	32	40	30	22	21	27	33	30	28	36	
	ES	-34	02-93	14	34	04-91	8	5	20	27	26	18	17	20	15	18	26	14	
	FR	-64	02-93	-22	19	10-04	4	5	7	10	6	-3	-4	1	7	9	14	10	
	IE	-31	07-03	12	44	11-97	-1	-9	0	-14	-6	7	-2	5	-16	-12	6	11	
	IT	-20	03-93	18	59	06-96	16	30	20	15	29	37	32	38	49	53	43	55	
	CY	-13	06-02	9	28	03-05	8	8	28	26	5	12	15	11	8	15	6	3	
	LV	2	01-04	19	36	09-99	14	19	18	20	23	18	26	25	23	26	29	24	
	LT	-35	09-00	-3	45	03-04	8	17	4	-3	0	12	20	21	18	20	38	36	
	HU	-25	08-05	7	39	02-98	-14	-18	-22	-17	-22	-21	-13	-25	-5	-6	-5	-4	
	NL	-5	12-03	19	41	10-99	1	-3	9	9	-1	-2	-3	-4	4	7	8	20	
	AT	-24	03-03	-3	15	07-00	0	-4	14	5	-4	-5	-1	-1	4	0	1	4	
	PL	-33	12-01	-7	17	07-98	-3	-6	-4	-6	-6	-6	-7	-6	-7	-5	-1	4	
	PT	-26	01-03	7	39	01-90	10	5	8	5	3	-9	-16	-13	-13	-10	-8	-2	
	SI	15	02-03	31	47	04-99	37	27	26	37	35	34	35	38	36	38	40	35	
	SK	-14	11-94	23	60	12-96	30	30	45	32	30	54	42	23	23	32	33	37	
FI	-4	04-03	10	39	05-97	9	1	9	17	16	19	18	22	22	25	21	18		
SE	19	10-01	42	67	04-00	21	26	26	33	24	29	39	40	39	42	47	48		
UK	-29	11-05	11	40	01-97	5	-2	-3	-8	-19	-26	-23	-13	-18	-26	-29	-11		
INTENTIONS OF PLACING ORDERS	EU	-16	10-02	-3	13	01-90	-6	-3	-8	-8	-10	-7	-8	-6	-4	-4	-6	-5	
	Euro area	-23	10-02	-5	14	01-90	-8	-3	-8	-9	-10	-5	-8	-5	-3	-2	-3	-3	
	BE	-27	05-93	-7	15	03-90	-8	-7	-8	-8	-7	-6	-7	-10	-9	-2	-5	-6	
	CZ	-34	02-96	29	56	02-95	10	22	14	16	16	13	10	26	27	27	23	19	
	DK	-12	10-01	19	58	07-94	21	28	27	23	28	22	17	26	27	25	29	.	
	DE	-51	09-02	-15	21	02-91	-22	-15	-27	-28	-32	-23	-27	-24	-23	-23	-24	-29	
	EE	-3	03-03	18	33	01-03	2	23	29	29	24	29	29	21	14	17	26	28	
	EL	-23	04-93	10	38	06-96	14	2	15	14	9	-3	-10	2	14	5	11	17	
	ES	-31	02-93	5	21	01-90	-1	-3	1	11	11	9	12	11	6	3	1	5	
	FR	-37	12-92	-14	11	10-99	-4	-3	-3	-2	-8	-6	-11	-8	-4	-4	-4	-2	
	IE	-43	05-03	-5	27	08-00	-21	-18	-13	-11	-7	2	-13	1	-18	-19	-7	-10	
	IT	-25	10-97	22	69	04-92	11	35	18	7	22	34	34	37	47	53	47	44	
	CY	-44	06-02	-9	10	02-04	-9	-15	1	4	-2	-9	7	-2	-6	-6	3	-7	
	LV	-4	10-96	9	27	03-02	10	11	16	13	19	14	25	18	18	21	23	14	
	LT	-23	01-03	7	51	07-04	17	23	5	14	1	4	14	25	23	27	48	43	
	HU	-29	03-05	-2	23	05-98	-17	-25	-29	-18	-26	-21	-22	-26	-13	-17	-9	-11	
	NL	-22	09-03	3	25	08-99	-12	-17	-10	-7	-16	-14	-19	-17	-11	-9	-9	0	
	AT	-42	03-99	-31	-16	06-00	-25	-28	-27	-22	-26	-23	-21	-24	-23	-25	-26	-23	
	PL	-30	12-01	-6	13	12-98	-3	-6	-2	-7	-5	-6	-6	-8	-8	-3	-3	-6	
	PT	-41	01-03	-13	12	11-98	-8	-3	-6	-13	-23	-19	-20	-27	-30	-25	-25	-2	
	SI	-2	10-01	15	30	10-00	12	10	6	13	19	13	21	14	17	19	23	21	
	SK	-19	03-96	35	78	01-02	34	37	51	47	53	54	60	32	33	33	41	36	
	FI	-20	07-03	-6	11	05-05	9	-4	4	4	11	3	2	7	4	8	7	11	
	SE	-17	10-01	14	52	03-00	2	6	3	5	0	0	9	5	11	18	18	21	
	UK	-37	03-91	3	34	08-96	0	-9	-12	-12	-20	-22	-21	-18	-19	-25	-30	-22	
EMPLOYMENT EXPECTATIONS	EU	-13	12-92	-1	9	08-00	0	-1	0	-1	1	0	-1	-2	0	0	-4	-1	
	Euro area	-11	12-92	-1	10	08-00	2	0	1	1	4	5	2	0	2	3	-2	2	
	BE	-13	12-92	3	16	04-90	15	9	4	2	4	8	6	7	10	8	3	-1	
	CZ	-37	01-95	1	22	05-02	6	8	8	1	6	-2	-4	8	11	11	15	10	
	DK	-8	05-01	8	28	05-00	10	9	16	12	15	10	14	15	20	13	16	.	
	DE ^(c)	-32	01-03	-8	15	03-98	-6	-10	-12	-10	-7	-8	-6	-6	-4	-10	-11	-4	
	EE	-8	05-02	3	14	12-05	3	7	8	10	13	4	5	-1	4	8	9	14	
	EL	-12	07-05	28	62	03-98	3	2	0	8	0	-9	-12	-5	2	-10	-10	21	
	ES	-19	09-93	0	8	12-98	-1	4	5	3	4	3	2	3	2	4	1	2	
	FR	-14	06-91	-2	12	10-00	5	1	0	3	1	0	-3	-2	2	4	0	-2	
	IE	-17	05-03	2	22	03-98	-9	-6	1	-3	-2	0	-7	-4	-1	-12	-6	-4	
	IT	-34	02-97	11	54	02-00	19	21	31	26	42	47	32	16	24	38	19	22	
	CY	-4	07-02	0	5	10-05	-1	0	-2	1	-1	1	1	-1	0	5	0	0	
	LV	-23	04-96	0	15	11-05	10	10	9	5	9	9	14	14	13	8	15	12	
	LT	-48	07-95	-10	68	10-05	41	60	48	47	42	42	52	63	64	68	68	54	
	HU	-36	05-96	-9	5	11-03	-10	-13	-19	-15	-18	-16	-16	-19	-13	-15	-9	-7	
	NL	-6	08-05	2	13	06-99	-4	-3	-2	-2	-4	-3	-6	-6	-5	-3	-4	-1	
	AT	-20	03-99	-5	71	01-96	-5	-7	-6	-7	-7	-6	-7	-4	-6	-7	-9	-4	
	PL	-28	12-01	-12	2	07-97	-8	-7	-7	-9	-8	-8	-8	-10	-6	-6	-6	-5	
	PT	-23	05-03	-5	13	09-97	-3	-11	-11	-9	-11	-12	-11	-14	-19	-20	-19	-20	
	SI	-46	02-99	-9	11	06-04	5	-13	-13	-4	-13	-5	-8	-10	5	-9	-7	-8	
	SK	-71	12-93	-8	31	09-02	-15	-13	-17	-9	-3	0	-1	1	2	-2	6	14	
	FI	-16	07-03	-3	10	05-04	-2	-2	-2	-4	-3	2	1	-1	-6	2	2	0	
	SE	-34	10-96	-4	23	06-00	-15	-19	-15	-14	-19	-16	-17	-11	-9	-8	7	-2	
	UK	-32	12-91	-2	25	10-97	-10	-7	-2	-6	-15	-18	-14	-10	-10	-16	-19	-19	

(a) United Kingdom: refers to the volume of sales for the time of the year.

(b) The indicator is the arithmetic average of the balances (%) for the present and the future business situation, and for stocks – with inverted sign.

(c) Quarterly data, seasonally adjusted monthly.

TABLE 6: Monthly survey of construction industry (s.a.)^(a)

		Since 01/1985						2005											
		Min.		Ave.		Max.		Jan.	Feb.	Mar.	Apr.	May	June	July	Aug.	Sep.	Oct.	Nov.	Dec.
		Value	Date	Value	Date	Value	Date												
CONSTRUCTION CONFIDENCE INDICATOR	EU	-42	10-93	-20	3	02-90	-10	-10	-10	-11	-11	-12	-11	-9	-7	-7	-3	-5	
	Euro area	-44	08-96	-20	4	03-90	-12	-12	-12	-12	-12	-13	-12	-9	-8	-8	-3	-5	
	BE	-35	11-95	-12	10	02-00	-6	-6	-4	-6	-5	-6	-5	-6	-4	-3	-1	-3	
	CZ	-64	06-99	-18	3	06-95	3	-4	-7	-9	-8	-10	-7	-7	-1	0	-2	-8	
	DK	-37	12-91	-8	19	03-98	2	4	3	5	8	6	5	3	5	14	16	18	
	DE	-62	11-02	-36	3	01-91	-50	-55	-51	-50	-47	-45	-44	-43	-38	-38	-35	-35	
	EE	-46	12-99	3	46	12-05	24	28	31	32	33	30	29	33	27	29	38	46	
	EL	-53	03-05	-12	33	04-00	-44	-48	-53	-48	-31	-38	-49	-47	-45	-40	-36	-34	
	ES	-57	10-92	-2	42	01-99	17	26	28	20	15	10	17	25	26	23	39	23	
	FR	-60	03-93	-16	34	10-00	11	11	11	8	7	5	9	7	8	12	13	11	
	IE	-54	09-02	10	58	06-97	13	12	27	29	15	45	34	20	28	24	31	13	
	IT	-68	10-93	-13	21	05-90	6	2	-5	-3	-1	-5	-8	-3	-5	-10	-6	-2	
	CY	-32	12-05	10	35	12-03	7	10	7	9	8	-4	-7	-7	-2	-4	-14	-32	
	LV	-64	07-93	-28	13	11-05	0	-2	3	3	3	5	5	6	7	7	13	10	
	LT	-76	09-00	-40	7	12-05	-10	-5	-2	-22	-11	-4	1	1	2	1	7	7	
	LU	-73	03-94	-26	24	03-90	-12	-22	-29	-20	-21	-26	-33	-26	-32	-22	-20	-22	
	HU	-24	12-04	-8	11	09-98	-19	-20	-17	-17	-17	-21	-15	-16	-9	-13	-10	-15	
	NL	-25	05-03	-3	27	12-00	-6	-5	-2	-1	-1	1	1	4	6	4	6	3	
	AT	-60	04-96	-29	-12	12-05	-25	-22	-24	-24	-20	-16	-23	-18	-14	-13	-14	-12	
	PL	-63	12-02	-42	-21	11-05	-29	-32	-30	-29	-29	-31	-29	-28	-27	-24	-21	-25	
PT	-56	02-03	-26	-1	12-97	-33	-40	-34	-39	-34	-42	-44	-39	-41	-31	-38	-39		
SI	-33	06-02	-8	6	01-05	6	2	2	-2	-4	-7	-8	-9	-8	-11	-10	-10		
SK	-86	07-99	-27	18	03-97	-12	-17	-13	-11	-11	-9	-7	-10	-9	-11	-5	-6		
FI	-97	09-91	-17	48	06-98	-7	12	16	21	13	14	21	22	10	10	12	19		
SE	-83	12-93	-36	27	07-05	10	3	-3	6	6	15	27	8	21	14	15	19		
UK	-79	06-91	-20	5	08-04	-2	-3	-2	-7	-10	-12	-12	-11	-10	-5	-9	-8		
ORDER BOOKS	EU	-55	08-93	-29	-2	03-90	-16	-15	-15	-19	-17	-19	-18	-17	-15	-14	-9	-11	
	Euro area	-55	08-93	-28	-3	03-90	-17	-15	-15	-19	-17	-19	-18	-16	-14	-14	-7	-10	
Component of the construction confidence indicator	BE	-48	02-96	-23	2	02-00	-16	-16	-12	-15	-15	-16	-14	-14	-14	-15	-12	-13	
	CZ	-72	06-99	-22	9	12-02	7	-4	-7	-13	-12	-13	-13	-8	-3	-3	-9	-22	
	DK	-49	12-91	-11	33	03-95	2	3	4	6	10	10	8	6	5	15	17	20	
	DE	-71	10-02	-46	-7	03-91	-64	-66	-61	-63	-59	-59	-58	-54	-52	-47	-43	-47	
	EE	-67	12-99	-3	49	12-05	28	26	30	35	40	35	30	33	26	25	38	49	
	EL	-77	06-95	-37	16	04-00	-49	-61	-63	-60	-48	-59	-61	-63	-66	-63	-63	-65	
	ES	-64	08-93	2	54	11-05	30	50	45	31	37	28	29	27	35	29	54	37	
	FR	-74	09-93	-23	37	10-00	9	10	8	1	-1	-1	3	0	0	8	6	4	
	IE	-61	06-94	4	68	06-97	4	-9	28	25	21	37	23	19	33	14	21	12	
	IT	-84	02-94	-24	17	05-90	-3	-3	-10	-10	-11	-15	-15	-19	-9	-19	-8	-3	
	CY	-33	12-05	5	41	12-03	6	5	-5	4	-5	-6	-9	-9	-3	-10	-6	-33	
	LV	-84	01-96	-50	-4	11-05	-16	-17	-14	-12	-11	-8	-9	-7	-11	-10	-4	-5	
	LT	-96	09-00	-63	-12	12-05	-35	-30	-26	-28	-37	-21	-16	-13	-15	-14	-13	-12	
	LU	-73	08-93	-28	12	03-90	-19	-28	-32	-24	-21	-24	-37	-21	-40	-25	-22	-21	
	HU	-35	12-04	-17	3	09-98	-32	-33	-30	-28	-28	-33	-26	-25	-15	-22	-19	-24	
	NL	-30	09-93	-8	20	09-00	-13	-13	-9	-7	-4	-5	-3	-1	2	-2	0	-2	
	AT	-65	04-96	-40	-18	12-05	-35	-38	-38	-36	-33	-30	-35	-29	-23	-21	-22	-18	
	PL	-99	12-02	-67	-32	12-01	-61	-62	-60	-59	-60	-59	-56	-56	-54	-53	-48	-54	
	PT	-79	05-94	-44	-9	12-97	-53	-61	-57	-56	-55	-62	-60	-57	-63	-58	-54	-53	
	SI	-42	06-02	-13	3	08-04	2	0	-5	-9	-11	-13	-21	-27	-19	-28	-21	-21	
SK	-93	03-94	-44	-5	03-97	-27	-29	-25	-23	-26	-23	-26	-34	-21	-30	-17	-16		
FI	-99	12-93	-24	38	06-98	-3	9	7	10	5	9	12	21	11	10	11	16		
SE	-97	05-97	-48	33	01-90	-7	-5	-10	-2	-2	-5	13	5	14	11	6	14		
UK	-87	06-91	-34	-3	01-90	-7	-10	-11	-18	-19	-24	-23	-23	-21	-17	-19	-18		
EMPLOYMENT EXPECTATIONS	EU	-34	04-96	-12	9	02-90	-4	-6	-5	-3	-5	-4	-3	-1	0	1	2	1	
	Euro area	-38	04-96	-12	11	02-90	-6	-8	-8	-5	-7	-6	-5	-2	-1	-1	1	0	
Component of the construction confidence indicator	BE	-24	11-95	-1	19	02-90	3	3	5	4	5	3	5	2	6	8	10	7	
	CZ	-57	06-99	-13	12	06-95	-1	-3	-7	-4	-4	-6	-1	5	1	2	6	5	
	DK	-31	09-91	-5	42	03-98	2	5	3	3	6	2	2	-1	5	12	14	16	
	DE	-59	03-96	-27	19	02-90	-36	-43	-41	-36	-35	-32	-30	-32	-25	-29	-26	-23	
	EE	-45	03-99	10	68	01-97	20	30	33	30	27	25	27	33	29	34	38	42	
	EL	-64	09-04	13	60	03-99	-40	-34	-42	-36	-14	-18	-37	-31	-25	-18	-8	-3	
	ES	-66	03-93	-5	54	01-99	4	2	11	8	-6	-9	4	22	17	17	24	9	
	FR	-51	03-93	-9	31	10-00	13	13	14	16	15	12	16	14	16	16	21	19	
	IE	-50	09-02	16	61	07-04	22	32	26	34	9	54	44	21	23	35	41	14	
	IT	-60	10-93	-2	31	06-04	15	8	-1	5	9	5	-1	6	0	-2	-4	-1	
	CY	-30	12-05	16	48	11-03	7	16	19	14	20	-2	-5	-5	-2	3	-23	-30	
	LV	-45	07-93	-5	30	11-05	16	13	20	18	18	18	18	19	25	23	30	24	
	LT	-56	09-00	-17	37	03-03	16	20	21	-15	16	13	17	15	19	16	27	26	
	LU	-77	02-94	-24	36	03-90	-5	-15	-26	-16	-21	-28	-29	-30	-25	-18	-17	-24	
	HU	-13	12-04	2	21	01-98	-6	-7	-5	-5	-7	-8	-4	-7	-4	4	0	-6	
	NL	-26	05-03	2	36	12-00	1	3	4	6	2	6	4	8	11	9	12	9	
	AT	-76	02-01	-18	14	02-03	-16	-5	-9	-12	-7	-3	-10	-7	-4	-5	-6	-7	
	PL	-49	04-02	-13	18	05-96	2	-2	-1	2	1	-3	-2	-1	1	4	5	3	
	PT	-47	02-03	-8	19	09-97	-12	-19	-12	-22	-13	-23	-29	-22	-18	-4	-23	-24	
	SI	-23	06-02	-2	10	08-05	9	3	9	5	2	0	5	10	4	6	0	1	
SK	-86	07-99	-11	41	01-97	3	-5	-2	1	4	6	11	13	3	9	7	4		
FI	-100	04-91	-10	59	03-97	-11	16	26	32	21	20	30	23	9	10	13	22		
SE	-78	01-97	-24	45	01-01	26	11	4	13	13	35	40	10	27	17				

TABLE 6 (continued): Monthly survey of construction industry (s.a.)^(a)

		Since 01/1985						2005											
		Min.		Ave.		Max.		Jan.	Feb.	Mar.	Apr.	May	June	July	Aug.	Sep.	Oct.	Nov.	Dec.
		Value	Date	Value	Date	Value	Date												
TREND OF ACTIVITY COMPARED WITH PRECEDING MONTHS	EU	-36	03-93	-8	15	03-90	8	1	-8	-4	4	1	3	6	6	7	8	9	
	Euro area	-40	03-93	-8	17	03-90	6	0	-10	-5	4	0	3	6	5	5	8	9	
	BE	-37	03-91	-4	36	02-90	2	3	-14	0	10	-7	1	0	-2	1	-2	2	
	CZ	-34	06-99	25	77	01-05	77	61	50	41	36	34	33	40	40	41	48	42	
	DK	-21	04-03	-3	19	01-98	5	9	8	8	8	9	4	5	7	12	15	12	
	DE	-44	03-96	-19	19	03-90	-23	-29	-39	-25	-14	-21	-18	-13	-15	-14	-6	-12	
	EE	-25	03-99	18	47	02-95	42	46	38	32	38	33	19	22	24	23	24	45	
	EL	-50	04-05	5	61	06-98	-23	-35	-44	-50	-23	-15	-27	-33	-41	-39	-19	-22	
	ES	-49	07-97	6	59	01-99	27	16	5	23	38	32	30	40	38	43	38	46	
	FR	-64	09-93	-8	42	07-00	20	19	13	10	8	11	19	15	14	18	20	20	
	IE	-45	09-91	4	47	05-96	24	-7	15	6	0	-5	27	17	-12	15	23	30	
	IT	-50	03-93	-2	26	07-04	15	11	3	2	7	-3	1	5	7	-7	-5	1	
	CY	-29	09-04	5	78	09-02	9	4	1	34	-7	-13	-6	-10	50	-24	-20	-14	
	LV	-47	04-96	-1	44	06-02	21	19	21	25	24	25	24	19	22	19	24	27	
	LT	-61	03-00	-4	81	06-02	11	23	-7	10	18	19	19	14	27	27	30	36	
	LU	-68	10-02	-23	30	04-91	-2	-9	-32	-41	-32	-25	-28	-28	-35	-38	-20	-21	
	HU	-37	03-03	-8	14	03-99	-17	-19	-20	-12	-12	-17	-8	-6	1	3	3	-6	
	NL	-41	02-96	-2	37	03-97	12	2	-5	1	5	5	7	8	10	5	4	4	
	AT	-87	04-96	-8	27	01-04	22	-16	-38	-28	-7	1	-7	12	10	7	12	15	
	PL	-30	01-02	9	42	01-05	42	23	0	-3	4	8	13	13	20	22	26	27	
PT	-37	09-03	-9	24	05-97	-8	-12	-24	-29	-19	-27	-34	-28	-26	-20	-19	-29		
SI	-17	08-05	9	33	02-04	11	3	1	-4	-7	-3	-17	-17	-7	-1	-10	-4		
SK	-43	06-99	7	53	12-04	37	3	-6	0	18	24	27	25	26	27	29	41		
FI	-88	09-91	6	75	01-98	25	29	25	11	10	23	21	37	33	31	39	29		
SE	-67	12-91	-11	50	10-05	16	13	12	11	20	34	50	41	45	50	42	41		
UK	-69	06-91	-6	16	02-04	9	2	-1	-6	-1	-2	-6	-5	-2	3	-4	-5		
PRICE EXPECTATIONS	EU	-22	03-93	0	24	02-90	7	4	2	4	2	1	2	6	7	7	8	9	
	Euro area	-27	04-96	-2	31	04-90	2	-1	-2	0	-2	-1	-1	2	3	3	3	5	
	BE	-22	01-96	-1	29	01-90	-1	-2	-1	1	-1	-1	3	4	7	5	9	9	
	CZ	-39	08-00	41	80	02-95	18	22	23	18	14	21	16	26	23	23	18	20	
	DK	-36	03-03	-16	4	10-05	-4	-6	-6	-5	-5	-7	-7	-6	-4	4	4	4	
	DE	-45	03-96	-13	45	02-90	-19	-21	-25	-18	-19	-20	-21	-16	-15	-15	-11	-12	
	EE	-29	09-99	32	88	04-94	40	41	43	38	42	58	56	59	67	65	67	66	
	EL	-39	06-05	6	35	06-95	-23	-30	-28	-38	-39	-39	-19	-17	-15	2	-8	-12	
	ES	-20	10-93	18	71	10-00	25	20	20	23	20	23	29	31	28	28	13	24	
	FR	-60	03-93	-16	32	10-00	1	0	1	-4	-6	-8	-6	-1	0	-2	0	5	
	IE	-66	07-03	6	58	03-00	10	-10	-1	8	5	11	11	-1	10	-9	10	18	
	IT	-16	07-93	17	63	06-90	29	16	12	17	13	16	9	8	14	5	12	9	
	CY	-1	07-05	31	76	06-04	26	17	21	12	7	1	-1	27	3	10	10	0	
	LV	-11	03-01	27	74	12-05	66	60	48	59	54	53	57	61	71	72	69	74	
	LT	-5	03-01	36	89	01-95	41	46	42	42	49	39	53	43	72	53	52	49	
	LU	-67	05-93	-28	29	11-00	-38	-35	-37	-29	-42	-48	-42	-42	-35	-29	-26	-16	
	HU	-3	01-05	10	32	03-01	-3	1	4	6	5	-1	0	2	6	7	7	2	
	NL	-7	01-04	25	69	04-01	-2	11	14	16	17	21	20	24	28	27	22	28	
	AT	-53	04-96	-11	18	06-91	4	0	-1	1	-3	-4	-5	-3	0	7	6	1	
	PL	-27	03-02	16	45	05-96	12	9	7	5	1	1	2	4	6	7	9	9	
PT	-40	05-03	0	48	06-90	-11	-10	-7	-23	-10	-23	-21	-10	-17	-17	-25	-23		
SI	-6	05-02	5	16	05-04	3	5	3	3	5	-2	1	0	5	9	4	1		
SK	-20	08-00	53	93	06-97	27	25	22	28	27	31	30	32	34	37	28	34		
FI	-45	06-91	9	65	05-97	3	13	9	29	16	27	12	18	12	27	18	21		
SE	-75	06-91	-15	33	01-01	16	7	5	12	23	19	-17	24	17	14	28	23		
UK	-56	12-90	15	43	08-04	38	33	25	26	23	15	25	25	24	28	36	31		

(a) The indicator is the average of the balances (%) for the questions on order-books and employment expectations.

TABLE 7a: Manufacturing industry; future Member States (s.a.)^(a)
Balances: i.e.differences between the percentages of respondents giving positive and negative replies (s.a.)

		Since 01/1990						2005											
		Min.		Ave.		Max.		Jan.	Feb.	Mar.	Apr.	May	June	July	Aug.	Sep.	Oct.	Nov.	Dec.
		Value	Date	Value	Date	Value	Date												
CONFIDENCE INDICATOR	BG	-30	06-93	-8	8	11-95	2	2	0	2	3	2	2	2	0	1	1	1	
	RO	-22	09-92	-1	28	06-96	5	2	4	-3	-1	-3	-1	0	-2	0	3	2	
PRODUCTION EXPECTATIONS	BG	-17	02-97	21	42	11-95	30	30	29	32	32	32	31	29	23	26	30	26	
	RO	-8	07-92	23	52	03-03	29	29	30	20	19	14	17	17	21	22	26	24	
ORDER BOOKS	BG	-65	06-93	-43	-19	10-00	-33	-31	-33	-34	-31	-34	-33	-31	-32	-32	-36	-37	
	RO	-53	06-99	-16	50	06-96	-9	-12	-11	-16	-16	-16	-18	-13	-18	-15	-15	-15	
STOCKS OF FINISHED PRODUCTS ^(b)	BG	-22	06-97	2	35	08-93	-7	-7	-5	-7	-7	-6	-9	-9	-10	-10	-10	-14	
	RO	-4	06-96	10	51	07-92	5	11	7	13	6	6	3	3	8	8	2	4	

(a) The confidence indicator is the arithmetic average of the three components (the last with inverted sign).
(b) Highest figure is considered as minimum, lowest figure is considered as maximum.

TABLE 7b: Services^(a)

		Since 01/1990						2005											
		Min.		Ave.		Max.		Jan.	Feb.	Mar.	Apr.	May	June	July	Aug.	Sep.	Oct.	Nov.	Dec.
		Value	Date	Value	Date	Value	Date												
CONFIDENCE INDICATOR	BG	15	03-03	28	42	06-02	30	26	29	28	31	35	30	23	24	22	26	24	
	RO⁽ⁿ⁾	6	02-03	28	72	06-04	30	20	20	22	26	17	25	26	22	22	20	25	
ASSESSMENT OF BUSINESS CLIMATE	BG	16	12-04	30	66	05-02	21	16	25	26	26	43	32	21	22	16	19	19	
	RO⁽ⁿ⁾	9	12-03	37	75	04-03	43	21	22	25	29	19	20	27	19	25	23	37	
EVOLUTION OF DEMAND IN RECENT MONTHS	BG	-1	05-02	17	36	03-04	15	12	16	14	19	17	23	16	23	12	20	16	
	RO⁽ⁿ⁾	-4	02-03	22	69	06-04	23	18	16	17	20	9	15	20	27	30	22	24	
EVOLUTION OF DEMAND IN THE MONTHS AHEAD	BG	16	03-03	39	59	05-02	53	48	45	46	47	44	37	31	28	38	40	37	
	RO⁽ⁿ⁾	-23	01-03	25	72	06-04	24	20	22	23	28	22	40	31	19	10	14	15	

(a) The confidence indicator is the arithmetic average of the three components.
(n) Not seasonally adjusted.

TABLE 7c: Consumer opinion and financial condition; future Member States (a)

		Since 01/1990						2005											
		Min.		Ave.		Max.		Jan.	Feb.	Mar.	Apr.	May	June	July	Aug.	Sep.	Oct.	Nov.	Dec.
		Value	Date	Value	Date	Value	Date												
CONFIDENCE INDICATOR	BG⁽ⁿ⁾	-39	08-03	-28	-14	08-01	-27	-26	-23	-26	-22	-19	-23	-26	-26	-32	-27	-30	
	RO⁽ⁿ⁾	-33	07-02	-24	-13	01-05	-13	-18	-20	-22	-22	-21	-24	-25	-25	-26	-26	-28	
FINANCIAL SITUATION OVER NEXT 12 MONTHS	BG⁽ⁿ⁾	-23	07-03	-12	3	07-01	-8	-9	-8	-9	-6	-4	-6	-11	-12	-19	-12	-16	
	RO⁽ⁿ⁾	-14	07-02	-3	9	11-04	9	5	3	-1	1	1	-1	-2	-2	-3	-4	-4	
GEN. ECON. SITUATION OVER NEXT 12 MONTHS	BG⁽ⁿ⁾	-25	08-03	-8	16	07-01	-4	-4	0	-3	0	2	-3	-12	-10	-24	-14	-16	
	RO⁽ⁿ⁾	-14	07-02	-2	12	01-05	12	8	6	1	-1	1	-7	-3	-7	-6	-5	-11	
SAVINGS OVER NEXT 12 MONTHS	BG⁽ⁿ⁾	-81	03-02	-74	-63	11-05	-76	-74	-73	-74	-69	-68	-71	-67	-69	-67	-63	-68	
	RO⁽ⁿ⁾	-63	12-03	-54	-46	12-04	-49	-52	-49	-53	-52	-50	-48	-56	-54	-52	-55	-55	
UNEMPLOYMENT OVER NEXT 12 MONTHS	BG⁽ⁿ⁾	2	07-01	19	31	03-02	20	17	12	17	11	7	14	14	14	20	16	20	
	RO⁽ⁿ⁾	24	11-04	38	51	01-02	25	31	39	35	36	37	40	39	37	42	41	42	

(a) The confidence indicator is the average of the four components.
(n) Not seasonally adjusted.

TABLE 7d: Retail trade (s.a.)^(a)

		Since 01/1990						2005											
		Min.		Ave.		Max.		Jan.	Feb.	Mar.	Apr.	May	June	July	Aug.	Sep.	Oct.	Nov.	Dec.
		Value	Date	Value	Date	Value	Date												
CONFIDENCE INDICATOR	BG	5	11-00	18	32	06-00	11	9	10	11	15	11	13	15	14	11	10	12	
	RO	1	06-99	16	36	12-97	22	17	19	18	17	17	18	21	17	17	20	19	
PRESENT BUSINESS SITUATION	BG	-3	09-96	22	54	11-97	8	5	2	8	15	11	14	19	15	15	13	9	
	RO	-1	02-03	27	58	09-97	35	23	18	18	26	26	24	31	20	21	24	28	
VOLUME OF STOCKS EXPECTED	BG	-55	03-97	-18	12	11-00	-4	-5	-6	-5	-6	-1	-2	-2	-4	-2	-3	-6	
	RO	-20	12-94	4	55	10-95	-3	-2	-1	0	3	4	2	2	2	4	3	6	
	BG	-33	02-97	16	43	03-00	21	16	21	20	25	20	22	22	22	17	16	21	
	RO	-37	10-94	24	74	11-95	28	28	38	35	27	28	32	33	32	36	38	35	

(a) The confidence indicator is the arithmetic average of the three components (for stocks, with inverted sign).

TABLE 7e: Construction industry; future Member States (s.a.)^(a)

		Since 01/1990						2005											
		Min.		Ave.		Max.		Jan.	Feb.	Mar.	Apr.	May	June	July	Aug.	Sep.	Oct.	Nov.	Dec.
		Value	Date	Value	Date	Value	Date												
CONFIDENCE INDICATOR	BG	-56	03-93	-27	6	07-05	-9	-6	1	1	-1	1	6	-3	-3	-2	-2	-1	
	RO	-60	09-99	-9	35	06-96	-12	-16	-15	-18	-18	-18	-16	-9	-12	-11	-9	-9	
ORDER BOOKS	BG	-74	10-00	-42	-15	11-05	-21	-26	-24	-22	-24	-22	-21	-21	-19	-18	-15	-15	
	RO	-89	09-99	-12	64	03-98	-24	-26	-31	-32	-30	-27	-29	-22	-29	-26	-25	-27	
EMPLOYMENT EXPECTATIONS	BG	-50	01-93	-12	32	07-05	4	14	27	24	23	23	32	14	13	13	11	13	
	RO	-39	06-97	-6	38	03-01	1	-5	1	-4	-5	-9	-2	5	5	4	7	9	

(a) The confidence indicator is the average of both components.