



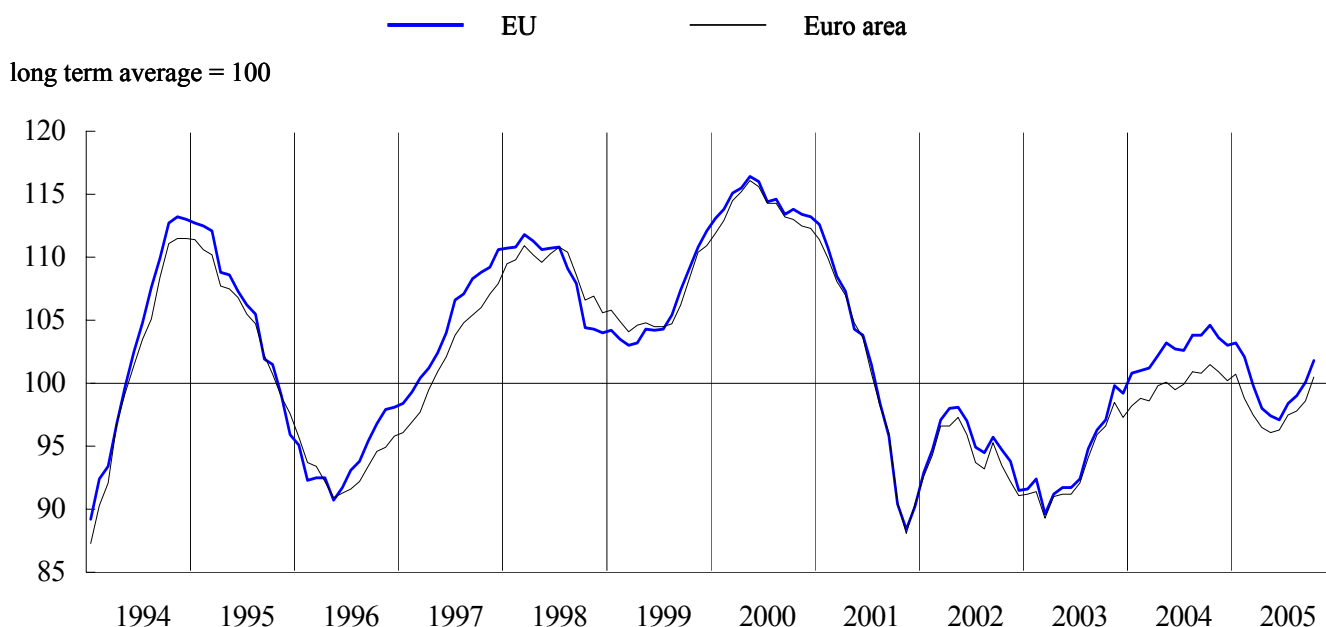
BUSINESS AND CONSUMER SURVEY RESULTS

October 2005

Next publication of Business and Consumer Survey Results scheduled for 30 November 2005

http://europa.eu.int/comm/economy_finance/indicators/businessandconsumersurveys_en.htm

GRAPH 1: Economic sentiment indicator (s.a.)



Strong upturn of economic sentiment in both the EU and the euro area

Economic sentiment continued to improve in October both in the EU and in the euro area. At 1.7 points in the EU and 1.9 points in the euro area the improvement was stronger than in previous months, indicating that the economy has overcome the soft patch between autumn of last year and June of this year. In both areas, the upturn in October lifted the economic sentiment indicator (ESI) above the long-term average of 100.

Economic sentiment was boosted by a rise in confidence across almost all sectors. Particularly strong increases were registered in the *services sector* and the *retail sector*, but managers in *industry* and *consumers* also showed growing confidence. Only the *construction sector* did not follow this general tendency, with the confidence indicator remaining unchanged.

Economic sentiment improved in a large majority of Member States, with only 6 out of 25 countries registering a decline. Among the larger Member States, *Italy* and *Germany* saw noteworthy improvements of the ESI of 3.8 and 2.0 points respectively. Economic sentiment also rose in *Spain* and *Poland*, although more moderately. Against this general trend economic sentiment in *France* and the *UK* declined, owing to a softening of consumer and retail trade confidence.

Industrial confidence improves slightly in both the EU and the euro area

In both the EU and the euro area, *industrial confidence* improved by 1 point in October, continuing the recovery that started in early summer of this year.

The improvement of the indicator in the EU was due to more positive views of industry managers with regard to their *order books* and their *production expectations*. Their assessment of the *stocks of finished products* did not change in October. In the euro area, *production expectations* improved while the assessment of both *order books* and the *stocks of finished products* remained unchanged.

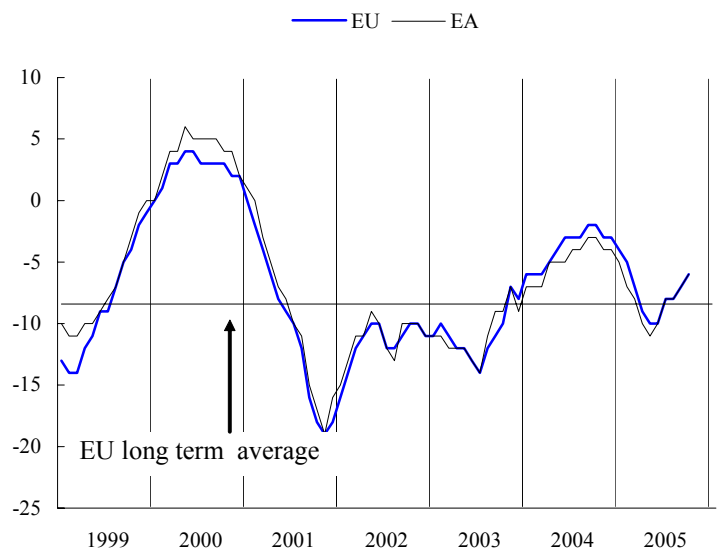
Among the larger Member States, the picture was quite diverse. In *Germany* and *France* confidence increased, while *Spain* and *Poland* saw a decline in confidence among industry managers. In *Italy* and the *UK* industrial confidence remained unchanged.

The results of the *quarterly survey in the manufacturing sector* for October 2005 are overall consistent with the results of the monthly survey. In particular, industrial managers reported a significant improvement of *new orders* and were more optimistic with regard to their *export expectations*.

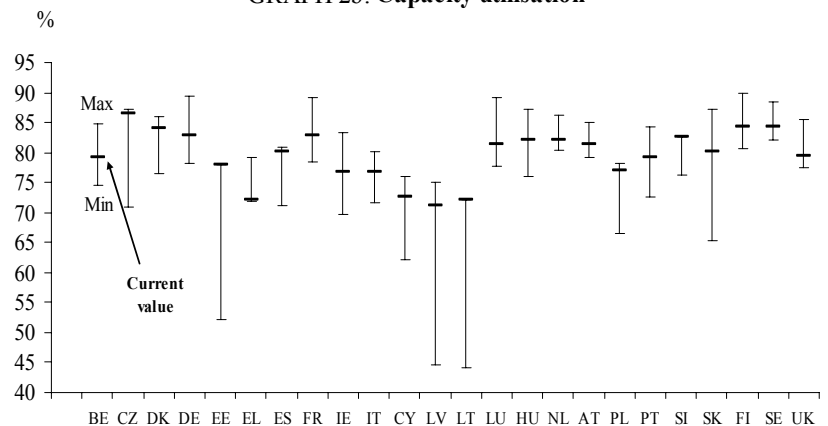
Among the larger Member States, *Germany*, *France*, *Italy* and *Poland* registered an increase in the rate of *capacity utilisation* between July and October, while the rate declined in *Spain* and the *UK*. For the EU as a whole capacity utilisation remained practically unchanged.

The steadiness of the capacity utilisation rate in the EU total manufacturing industry was not reflected at the branch level. While the *consumer goods* sector saw a considerable decrease in the capacity utilisation rate, in the *intermediate goods* sector the utilisation rate increased by a full percentage point. Capacity utilisation in the *investment goods* sector did not change significantly over the last quarter. Similarly diverging developments can be seen for *export expectations* on branch level: falling expectations in the consumer goods sector were accompanied by rising expectations in both the intermediate and the investment goods sector.

GRAPH 2a: Industrial confidence indicator



GRAPH 2b: Capacity utilisation



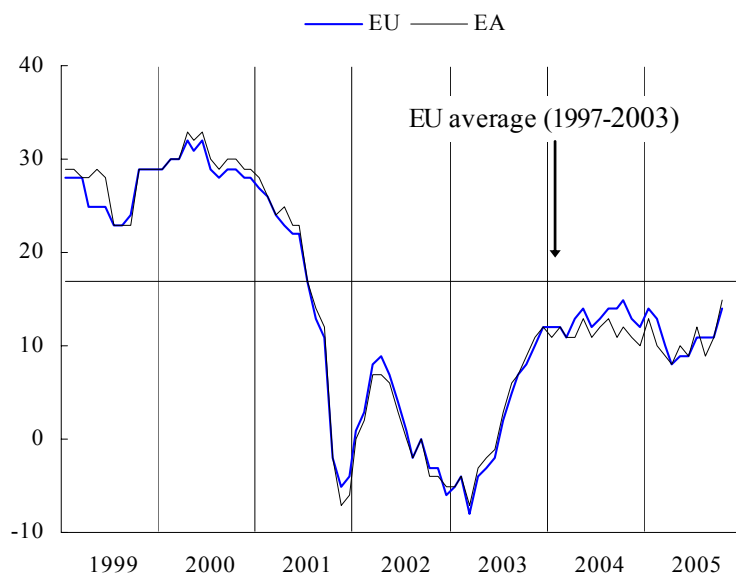
Strong growth of services confidence in both the EU and the euro area

Confidence in the *services sector* grew strongly in October in both the EU and the euro area. After a period of slight decline in the first quarter of this year, the indicator finally seems to be on an upward trend again. It is approaching its long term average, a level last reached in the middle of 2001.

All three components of the indicator contributed to the growth of confidence in the EU. The strongest force was the *evolution of demand in recent months*, which rose by 4 percentage points, but also the *assessment of the current business situation* and the *expected evolution of demand* showed significant increases.

The improvement of the indicator in October is largely reflected by the figures for the larger Member States. Except for the *UK*, where confidence remained unchanged, all larger countries witnessed growing confidence in the services sector. Especially in *Italy* (+9) and *Germany* (+5), the improvements were noticeable.

GRAPH 3: Services confidence indicator

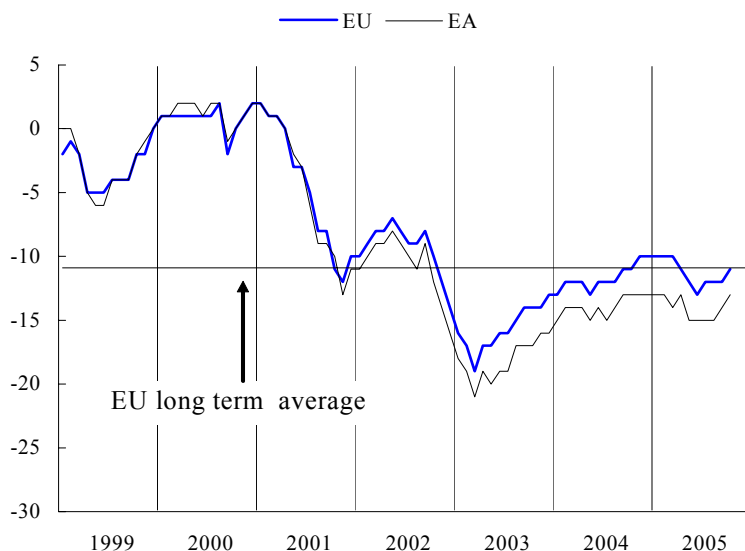


Slightly higher consumer confidence in both the EU and the euro area

Both the EU and the euro area saw an increase of *consumer confidence* of 1 percentage point in October. For the euro area indicator this is the second increase in a row after moving sideways during four months. Similarly, the rise in the EU comes after a period of three months where the indicator was steady. The EU figure is now back to its long-term average.

The main force behind the brightening of confidence was the more optimistic view of consumers with regard to *unemployment expectations*. The balance improved by 3 points for the EU and by 5 points for the euro area. The remaining components of the indicator did not show any significant changes.

GRAPH 4: Consumer confidence indicator



The results for the larger countries were quite diverse. Consumers in *Germany*, *Poland* and to a lesser extent *Italy* reported an increase in consumer confidence, while in *France* and the *UK* consumer confidence pointed downwards. *Spanish* consumers did not see their confidence changed.

The results from the *quarterly survey of consumers* show that both intentions to buy a car and to purchase or build a home in the next 12 month diminished slightly. Only with regard to expenditures for home improvement, consumers' intentions were slightly more positive than in July.

Further rise of confidence in retail trade in both the EU and the euro area

Confidence among retailers went up in both the EU and the euro area for the third month in a row. The indicator improved by 3 points in the EU and by 4 points in the euro area. The robust recovery over the last quarter (7 points in the EU, 6 points in the euro area) seems to end the prolonged period of rather volatile sideward movement in the euro area and the slight worsening in the EU over the last one and a half years.

Behind the growing confidence were strongly positive views on the *current business situation* as well as far more optimistic expectations with regard to the *future business situation*. The assessment of the *volume of stocks* did not change significantly.

Developments were fairly divergent among the larger Member States. Managers in *Germany* and *Italy* were significantly more confident in October than they were in September, while the assessment of retailers in *Spain*, *France*, *Poland* and the *UK* did not show more than marginal changes.

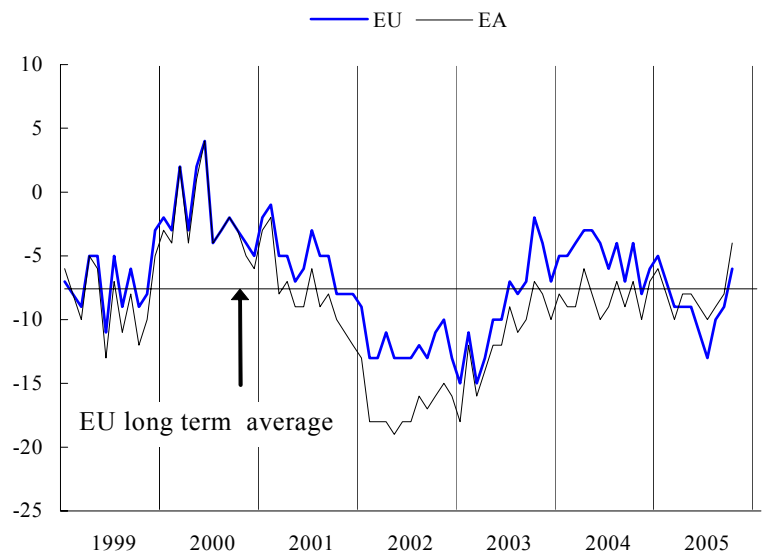
Construction confidence unchanged in both areas

After a three-month period of significant confidence improvements, the *construction confidence* indicator remained stable in both the EU and the euro area in October. The indicator has been on a slight but rather continuous upward trend since late 2003.

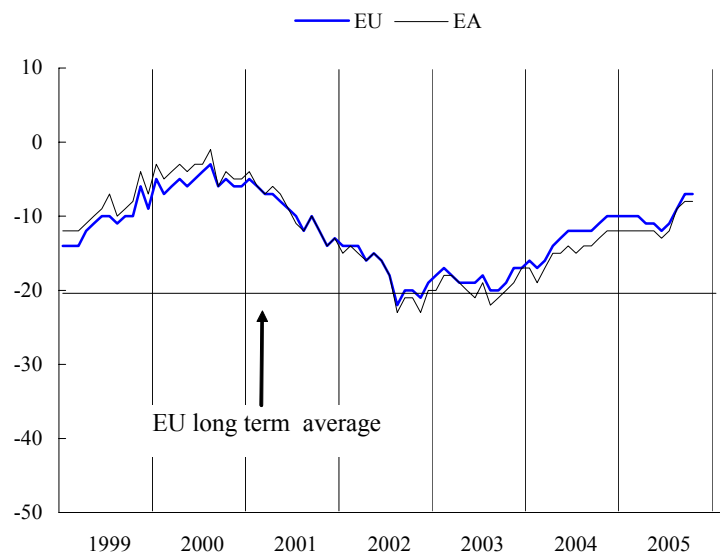
The unchanged position of the indicator was reflected by a broad stability of its underlying components. While managers in the EU reported small improvements in their assessment of *order books* and *future employment*, in the euro area the two components did not change at all.

The steadiness of the confidence indicator at the aggregate level masks a quite heterogeneous picture at the country level. Of the larger Member States *France*, *Poland* and the *UK* saw a considerable rise of confidence, while construction confidence recorded a rather large decrease in *Spain* and *Italy*. In *Germany*, the confidence indicator remained unchanged.

GRAPH 5: Retail confidence indicator



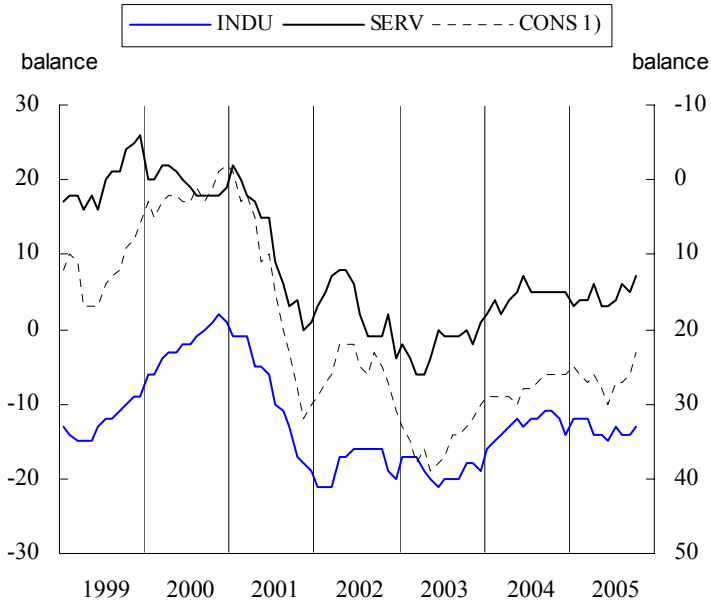
GRAPH 6: Construction confidence indicator



Employment, unemployment and price expectations in the EU

Employment expectations were consistently positive in October. Managers in both industry and the services sector as well as consumers had more positive expectations with regard to the employment situation compared to one month ago. Also *price expectations* were consistent among consumers and the managers in industry and the construction sector: stable expectations were reported in all three surveys in October.

GRAPH 7: Employment and unemployment



1) Unemployment expectations (Right Hand Scale)

GRAPH 8: Price expectations

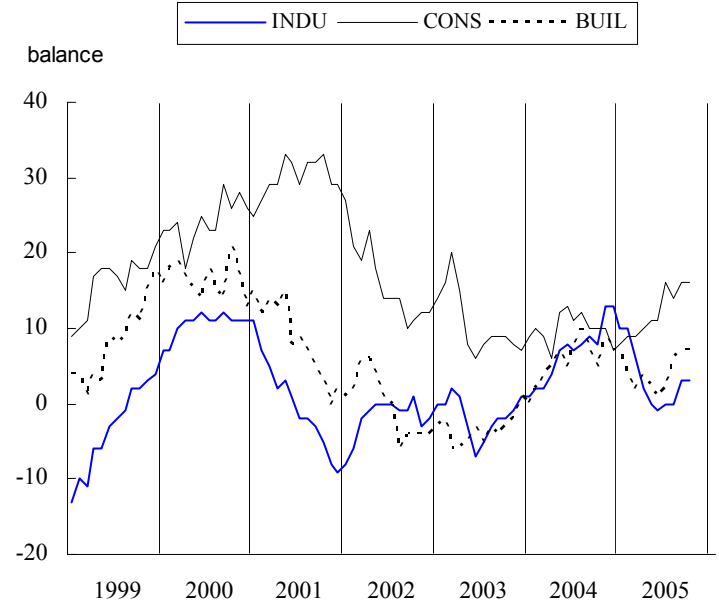


TABLE 1*: Indicators of confidence and economic sentiment(s.a.)		Since 01/1990 ¹⁾																
		2004			2005													
		Min. Value	Ave. Date	Max. Value	Nov	Dec.	Jan.	Feb.	Mar.	Apr.	May	June	July	Aug.	Sep.	Oct.		
EU	1. Industry	-28	11-92	-8	7	12-94	-3	-3	-4	-5	-7	-9	-10	-10	-8	-8	-7	-6
	2. Services	-8	03-03	17	32	08-98	13	12	14	13	10	8	9	9	11	11	11	14
	3. Consumer	-27	03-93	-11	2	12-00	-10	-10	-10	-10	-10	-11	-12	-13	-12	-12	-12	-11
	4. Retail trade	-19	12-92	-8	4	07-90	-8	-6	-5	-7	-9	-9	-9	-11	-13	-10	-9	-6
	5. Construction	-42	10-93	-20	3	02-90	-10	-10	-10	-10	-10	-11	-11	-12	-11	-9	-7	-7
	=6. ESI	76.7	07-93	100.0	116.4	05-00	103.6	103.0	103.2	102.1	99.8	98.0	97.4	97.1	98.4	99.0	100.1	101.8
Euro area	1. Industry	-31	07-93	-8	6	05-00	-4	-4	-5	-7	-8	-10	-11	-10	-8	-8	-7	-6
	2. Services	-7	03-03	18	34	08-98	11	10	13	10	9	8	10	9	12	9	11	15
	3. Consumer	-29	07-93	-12	2	05-00	-13	-13	-13	-13	-14	-13	-15	-15	-15	-15	-14	-13
	4. Retail trade	-21	03-93	-9	8	08-90	-10	-7	-6	-8	-10	-8	-8	-9	-10	-9	-8	-4
	5. Construction	-44	08-96	-20	4	03-90	-12	-12	-12	-12	-12	-12	-12	-13	-12	-9	-8	-8
	=6. ESI	75.9	07-93	100.0	116.1	05-00	100.9	100.2	100.7	98.8	97.5	96.5	96.1	96.3	97.5	97.8	98.6	100.5
BE	1. Industry	-33	04-93	-11	5	06-00	-2	-5	-3	-6	-7	-11	-13	-13	-13	-12	-11	-6
	2. Services	-7	03-03	13	33	03-98	10	11	15	14	11	12	3	9	6	5	14	14
	3. Consumer	-27	08-93	-6	17	12-00	-4	-4	-6	-3	-1	-4	-11	-11	-11	-10	-14	-6
	4. Retail trade	-25	05-93	-6	13	04-90	-3	-2	1	-2	-10	-4	-10	-7	-10	-8	-9	0
	5. Construction	-35	11-95	-12	10	02-00	-4	-9	-6	-6	-4	-6	-5	-6	-5	-6	-4	-3
	=6. ESI	77.0	04-93	100.0	120.2	06-00	106.3	105.1	107.5	106.6	104.3	101.3	95.6	98.6	96.5	97.5	99.9	105.0
CZ	1. Industry	-31	03-99	-1	27	06-00	12	11	7	8	7	5	4	5	7	6	6	10
	2. Services	32	06-05	40	47	07-02	36	39	37	39	38	37	37	32	32	37	40	38
	3. Consumer	-36	03-98	-15	1	04-01	-10	-5	-4	-5	-2	-6	-3	-2	-2	-4	0	-1
	4. Retail trade	-1	02-99	14	26	08-02	23	17	17	20	19	14	15	16	16	15	19	20
	5. Construction	-64	06-99	-18	3	06-95	-5	1	3	-4	-7	-9	-8	-10	-7	-7	-1	0
	=6. ESI	69.6	03-99	100.0	117.6	04-01	105.0	108.2	104.7	107.5	106.5	102.0	103.2	98.5	100.3	103.6	109.5	108.2
DK	1. Industry	-26	12-98	-2	16	09-94	-3	2	3	1	1	-5	0	-2	-4	2	0	3
	2. Services	11	10-01	26	37	04-04	33	37	34	33	34	33	34	32	30	32	34	31
	3. Consumer	-11	10-90	6	17	02-95	13	14	14	16	17	14	14	14	13	13	15	16
	4. Retail trade	-6	10-01	17	37	11-94	26	29	28	28	31	29	28	25	26	27	26	27
	5. Construction	-37	12-91	-8	19	03-98	2	4	2	4	3	5	8	6	5	3	5	14
	=6. ESI	74.5	12-98	100.0	121.2	09-94	110.8	115.7	114.5	113.8	114.7	109.3	113.5	110.3	105.6	111.9	111.5	112.5
DE	1. Industry	-35	04-93	-11	11	09-90	-6	-6	-6	-9	-11	-13	-13	-12	-11	-9	-8	
	2. Services	-23	12-02	24	52	03-99	11	8	11	6	5	4	6	7	10	12	9	14
	3. Consumer	-28	10-93	-11	6	05-00	-17	-16	-12	-15	-18	-15	-14	-15	-17	-15	-14	-11
	4. Retail trade	-44	01-03	-18	21	02-91	-27	-19	-17	-22	-30	-25	-23	-22	-25	-23	-25	-19
	5. Construction	-62	11-02	-36	3	01-91	-53	-55	-50	-55	-51	-50	-47	-45	-44	-43	-38	-38
	=6. ESI	80.5	07-93	100.0	120.2	09-90	97.1	96.8	98.4	95.5	93.7	93.4	93.7	93.7	94.3	95.9	96.0	98.0
EE	1. Industry	-31	07-92	4	19	03-01	5	6	12	15	17	13	15	11	12	15	13	19
	2. Services	5	11-04	23	34	11-02	5	11	13	17	20	23	23	27	31	23	26	25
	3. Consumer	-56	04-93	-23	1	10-05	-7	-11	-12	-10	-5	-8	-8	-6	-2	-4	-10	1
	4. Retail trade	-1	04-03	17	30	04-04	20	14	18	20	22	25	22	22	28	21	22	24
	5. Construction	-46	12-99	3	33	05-05	16	23	24	28	31	32	33	30	29	33	27	29
	=6. ESI	70.6	07-92	100.0	117.5	07-05	95.0	98.6	102.3	105.8	110.4	110.2	111.0	113.2	117.5	111.4	111.1	115.5
EL	1. Industry	-12	09-90	0	13	03-00	-4	-4	-3	-4	-7	-4	-9	-10	-10	-8	-6	-6
	2. Services	-14	04-03	27	62	08-00	11	6	20	18	23	22	16	11	10	12	13	21
	3. Consumer	-44	07-03	-30	-6	04-00	-27	-28	-32	-32	-33	-35	-31	-36	-32	-33	-35	-37
	4. Retail trade	-24	06-95	2	27	03-04	9	8	13	5	9	10	4	2	-1	1	5	5
	5. Construction	-53	03-05	-12	33	04-00	-47	-49	-44	-48	-53	-48	-31	-38	-49	-47	-45	-40
	=6. ESI	78.9	09-90	100.0	128.1	07-00	92.2	91.5	94.2	92.3	90.0	91.4	86.5	83.3	84.2	86.4	88.6	88.8
ES	1. Industry	-44	01-93	-9	7	04-00	-1	-4	-1	-5	-4	-6	-7	-8	-5	-5	-4	-5
	2. Services	10	10-04	31	56	06-98	13	16	15	12	14	17	27	25	21	23	19	20
	3. Consumer	-37	10-92	-11	6	03-00	-10	-9	-9	-10	-10	-11	-11	-12	-11	-12	-11	-11
	4. Retail trade	-36	02-93	-7	10	06-00	-11	-10	-10	-12	-7	-2	-1	-6	-4	-4	-5	-4
	5. Construction	-57	10-92	-2	42	01-99	22	24	17	26	28	20	15	10	17	25	26	23
	=6. ESI	69.9	01-93	100.0	116.7	04-00	97.4	97.7	98.4	95.3	97.6	97.7	100.8	98.7	98.1	98.9	98.1	98.7
FR	1. Industry	-41	06-93	-8	15	06-00	-3	-1	-5	-5	-9	-10	-12	-9	-8	-8	-9	-7
	2. Services	-22	06-93	3	25	06-90	10	11	11	9	8	6	7	10	11	10	10	11
	3. Consumer	-34	08-93	-18	4	01-01	-13	-13	-17	-14	-14	-17	-21	-17	-16	-15	-13	-15
	4. Retail trade	-37	04-97	-16	6	10-04	-1	1	-2	-3	0	1	-3	-5	-11	-9	-6	-7
	5. Construction	-60	03-93	-16	34	10-00	7	8	11	11	11	8	7	5	9	7	8	12
	=6. ESI	75.1	06-93	100.0	119.1	04-00	108.4	109.4	105.9	106.2	104.8	102.3	101.1	104.2	104.9	105.4	105.6	104.9
IE	1. Industry	-23	11-01	-2	21	11-99	-9	-7	-12	1	0	-2	-8	-2	3	-4	-4	-11
	2. Services	-14	05-03	15	44	08-98	-10	4	-2	-9	-4	9	-2	-12	7	-6	-2	10
	3. Consumer	-31	03-93	-4	19	01-00	2	8	7	4	7	1	-1	1	4	1	-4	-3
	4. Retail trade	-21	05-03	3	24	06-00	-7	-1	-4	-8	-3	-11	-8	-1	-5	2	-10	-7
	5. Construction	-54	09-02	10	58	06-97	28	27	13	12	27	29	15	45	34	20	28	24
	=6. ESI	79.2	06-93	100.0	122.4	11-99	90.9	95.8	91.7	96.1	98.2	98.6	91.1	95.1	100.4	94.4	93.5	94.1
IT	1. Industry	-22	04-93	-4	13	07-95	-1	-2	-2	-6	-7	-7	-9	-9	-6	-4	-3	-3
	2. Services	-5	11-01	17	44	02-98	13	10	19	13	16	12	10	-1	11	0	14	23
	3. Consumer	-38	04-93	-13	2	06-01	-14	-16	-16	-18	-18	-16	-17	-19	-21	-21	-21	-20
	4. Retail trade	-19	10-96	8	39	10-95	7	5	10	14	12	3	13	6	16	19	24	30
	5. Construction	-68	10-93	-13	21	05-90	5	4	6	2	-5	-3	-1	-5	-8	-3	-5	-10
	=6. ESI	73.0	04-93	100.0	118.9	02-95	101.2	97.6	100.3	96.6	96.3	96.0	95.6	92.7	95.9	93.6	98.1	101.9
CY	1. Industry	-9	04-03	3	13	04-02	1	10	4	3	6	3	5	0	3	0	1	-1
	2. Services	-21	09-02	4	19	06-05	12	11	11	13	18	15	7	19	15	10	4	3
	3. Consumer	-43	07-04	-29	-13	06-01	-38	-41	-34	-36	-35	-38	-35	-39	-41</			

TABLE 1* (continued) : Indicators of confidence and economic sentiment (s.a.)

		Since 01/1990 (*)				2004				2005								
		Min.		Ave.	Max.													
		Value	Date		Value	Date	Nov	Dec.	Jan.	Feb.	Mar.	Apr.	May	June	July	Aug.	Sep.	Oct.
LT	1. Industry	-37	11-98	-14	5	10-05	-3	-12	-9	-7	-3	-4	-8	-2	4	-3	4	5
	2. Services	9	04-05	18	30	03-03	10	20	16	12	12	9	16	16	25	17	23	28
	3. Consumer	-32	05-01	-13	-1	10-04	-2	-3	-5	-3	-5	-1	-4	-3	-4	-6	-7	-5
	4. Retail trade	-25	09-00	-5	26	06-04	11	11	5	10	-5	-1	3	7	14	13	12	13
	5. Construction	-76	09-00	-41	2	09-05	-9	-11	-10	-5	-2	-22	-11	-4	1	1	2	1
	=6. ESI	74.8	11-98	100.0	133.6	10-05	117.0	118.0	115.0	115.0	115.6	115.9	115.6	121.4	131.6	121.0	127.9	133.6
LU	1. Industry	-35	05-92	-10	26	04-95	-1	-7	-1	-6	2	-9	-18	-17	-20	-21	-18	-10
	2. Services	:	:	:	:	:	:	:	:	:	:	:	:	:	:	:	:	:
	3. Consumer	-4	09-05	3	14	02-02	7	8	6	2	4	3	2	-2	-1	-1	-4	-2
	4. Retail trade	:	:	:	:	:	:	:	:	:	:	:	:	:	:	:	:	:
	5. Construction	-73	03-94	-26	24	03-90	-16	-10	-12	-22	-29	-20	-21	-26	-33	-26	-32	-22
	=6. ESI	82.9	06-96	100.0	123.1	04-95	107.2	103.6	105.3	100.5	106.5	99.2	94.1	94.4	91.1	92.3	90.4	97.2
HU	1. Industry	-15	05-99	-3	8	12-97	-11	-5	-7	-12	-12	-14	-14	-12	-11	-10	-6	-5
	2. Services	-10	10-04	1	14	03-02	-9	-7	-6	-1	-5	-8	-4	-8	-4	-1	0	2
	3. Consumer	-58	04-95	-29	0	08-02	-25	-23	-21	-21	-24	-28	-30	-32	-27	-26	-24	-26
	4. Retail trade	-28	05-05	-8	9	11-97	-23	-24	-20	-20	-28	-24	-28	-25	-17	-26	-13	-12
	5. Construction	-24	12-04	-8	11	09-98	-20	-24	-19	-20	-17	-17	-17	-21	-15	-16	-9	-13
	=6. ESI	71.9	04-05	100.0	123.5	04-98	72.9	82.1	82.7	83.1	75.2	71.9	74.9	72.3	80.2	83.0	91.0	94.2
NL	1. Industry	-12	05-93	-2	6	10-00	-2	-3	-2	-2	-1	-2	-2	-4	-6	-4	-2	1
	2. Services	3	06-03	17	35	12-97	7	8	7	11	7	10	6	9	6	4	6	9
	3. Consumer	-19	07-93	4	31	03-00	-3	-8	-4	-4	-3	2	-4	-5	-4	-7	-7	-2
	4. Retail trade	-16	12-03	12	30	10-99	-9	-10	-7	-10	-6	-4	-10	-8	-10	-9	-7	-3
	5. Construction	-25	05-03	-3	27	12-00	-7	-7	-6	-5	-2	-1	-1	1	1	4	6	4
	=6. ESI	79.0	05-93	100.0	117.5	12-97	94.0	91.4	93.1	94.8	94.7	95.9	94.2	92.4	89.7	91.0	93.0	97.9
AT	1. Industry	-30	06-93	-12	8	03-90	-6	-8	-7	-9	-11	-11	-10	-11	-12	-10	-7	-9
	2. Services	0	01-02	15	30	03-98	16	16	13	12	9	12	10	7	10	9	8	8
	3. Consumer	-16	04-96	-2	11	07-00	-3	-3	1	-3	-2	0	-3	-3	-4	-4	-5	-3
	4. Retail trade	-29	03-03	-13	4	07-00	-18	-12	-15	-14	-10	-9	-15	-14	-13	-13	-10	-8
	5. Construction	-60	04-96	-29	-13	02-03	-21	-16	-25	-22	-24	-24	-20	-16	-23	-18	-14	-13
	=6. ESI	71.6	04-96	100.0	119.8	05-00	105.8	105.7	104.9	101.7	98.5	101.9	99.8	97.9	98.5	99.4	100.3	100.8
PL	1. Industry	-29	10-01	-14	9	09-97	-10	-10	-11	-11	-13	-14	-14	-13	-13	-13	-11	-13
	2. Services (n)	-8	03-03	1	8	08-05	3	1	7	8	5	8	7	5	6	8	7	8
	3. Consumer	-40	08-01	-30	-18	04-05	-22	-19	-20	-19	-18	-18	-21	-23	-23	-22	-20	-18
	4. Retail trade	-19	01-02	-6	7	07-98	-10	-8	-2	-6	-7	-8	-7	-6	-6	-5	-5	-5
	5. Construction	-63	12-02	-43	-22	03-98	-33	-39	-29	-32	-30	-29	-29	-31	-29	-28	-27	-24
	=6. ESI	75.8	02-99	100.0	142.6	02-05	125.1	124.0	137.1	142.6	136.2	140.9	135.7	129.4	132.3	139.8	140.5	141.0
PT	1. Industry	-28	06-93	-7	7	03-98	-7	-11	-9	-11	-10	-6	-10	-14	-14	-12	-10	-7
	2. Services	-17	05-03	7	29	06-01	12	0	-2	5	-3	-3	1	-4	-9	2	-1	-3
	3. Consumer	-49	03-03	-23	-1	07-91	-34	-36	-35	-34	-31	-30	-31	-39	-42	-42	-41	-41
	4. Retail trade	-27	01-03	-8	4	01-99	-11	-7	-7	-10	-7	-7	-10	-13	-17	-19	-19	-17
	5. Construction	-56	02-03	-26	-1	12-97	-34	-32	-33	-40	-34	-39	-34	-42	-44	-39	-41	-31
	=6. ESI	73.9	06-93	100.0	113.6	05-97	97.9	92.2	90.2	92.0	91.2	95.1	93.2	86.7	83.3	88.2	88.6	90.7
SI	1. Industry	-21	03-99	-3	18	06-00	3	1	0	-2	0	-3	-3	-2	-3	-2	-1	0
	2. Services	12	05-05	23	32	10-02	23	22	21	21	14	12	12	15	19	18	18	14
	3. Consumer	-29	06-99	-19	-9	10-04	-14	-18	-20	-13	-15	-13	-13	-18	-18	-17	-21	-22
	4. Retail trade	3	01-01	11	23	04-99	13	14	13	10	8	14	13	13	18	16	16	16
	5. Construction	-33	06-02	-8	6	01-05	-1	-1	6	2	2	-2	-4	-7	-8	-9	-8	-11
	=6. ESI	76.8	03-99	100.0	131.3	06-00	106.9	103.9	100.8	102.0	92.0	92.5	92.2	91.5	97.0	98.2	95.6	90.3
SK	1. Industry	-22	12-95	5	26	05-96	13	2	9	13	12	11	6	8	-2	-1	7	2
	2. Services	27	09-05	46	60	06-03	51	52	34	38	33	37	33	33	40	31	27	28
	3. Consumer	-50	08-99	-30	-9	06-05	-16	-12	-13	-13	-13	-10	-12	-9	-12	-14	-24	-18
	4. Retail trade	-17	10-93	8	34	11-98	3	-7	8	5	12	15	12	20	16	12	15	16
	5. Construction	-86	07-99	-28	18	03-97	-23	-20	-12	-17	-13	-11	-11	-9	-7	-10	-9	-11
	=6. ESI	71.2	03-99	100.0	125.5	05-96	113.2	111.7	100.4	105.4	99.5	104.8	98.2	102.5	98.9	92.5	87.5	89.9
FI	1. Industry	-24	01-93	2	30	10-94	5	5	3	4	6	-3	-2	10	19	15	12	11
	2. Services	-12	09-03	26	61	09-00	31	30	38	33	32	25	34	38	41	41	40	37
	3. Consumer	6	11-01	15	23	02-00	14	16	13	16	17	14	14	10	12	15	13	16
	4. Retail trade	-17	11-00	-4	10	05-04	-6	4	-1	-8	-4	-1	1	6	4	2	7	10
	5. Construction	-97	09-91	-17	48	06-98	-4	4	-7	12	16	21	13	14	21	22	10	10
	=6. ESI	74.6	04-91	100.0	120.7	11-94	105.5	106.6	106.4	105.8	107.1	101.4	104.9	110.5	115.0	113.5	111.5	111.1
SE	1. Industry	-29	10-01	-5	15	05-00	5	4	6	0	-7	-9	-7	-10	-10	-7	-10	-2
	2. Services	-24	01-03	17	46	12-00	29	23	35	30	32	31	27	32	32	26	34	37
	3. Consumer	-10	09-96	7	25	03-00	7	10	8	8	7	6	5	3	3	4	6	8
	4. Retail trade	-8	09-01	6	27	04-00	-3	0	0	2	0	1	-2	3	7	11	13	14
	5. Construction	-83	12-93	-37	27	07-05	4	14	10	3	-3	6	6	15	27	8	21	14
	=6. ESI	79.0	10-01	100.0	127.1	03-00	111.2	110.0	113.8	110.0	107.0	105.1	104.4	105.4	106.0	106.3	107.8	112.3
UK	1. Industry	-40	02-91	-11	11	02-95	-4	-3	-4	0	-5	-10	-13	-17	-10	-17	-10	-10
	2. Services	-20	12-02	14	37	10-97	19	19	10	24	3	-1	1	-1	3	10	3	3
	3. Consumer	-28	10-92	-8	7	10-97	0	0	0	0	3	0	-3	-3	-1	-2	-3	-4
	4. Retail trade	-30	07-05	-4	20	06-04	0	-3	-5	-9	-13	-19	-22	-28	-30	-21	-22	-23
	5. Construction	-79	06-91	-20	5	08-04	1	-1	-2	-3	-2	-7	-10	-12	-12	-11	-10	-5
	=6. ESI	71.1	02-91	100.0	118.4	12-97	110.3	111.2	108.0	113.5	104.7	100.0	97.8	94.8	98.7	97.6	101.6	100.3

In the tables: (s.a.) = seasonally adjusted, (n) = not seasonally adjusted, : = not available.

(*) Minimum, maximum and averages are calculated over the period of availability which is not necessarily 01/1990.

The economic sentiment indicator is composed of the industrial confidence indicator (40%), the service confidence indicator (30%), the consumer confidence indicator (20%), the construction confidence indicator (5%), and the retail trade confidence indicator (5%). Its long term average (1990-2003) equals 100.

The reported ESI average is based on this standardisation sample. All confidence indicators are balances.

Source: unless stated otherwise: European Commission business and consumer surveys.

TABLE 2a: Monthly survey of manufacturing industry (s.a.)^(a)

		Since 01/1990			2004		2005											
		Min.		Ave.	Max.		Nov.	Dec.	Jan.	Feb.	Mar.	Apr.	May	June	July	Aug.	Sep.	Oct.
		Value	Date	Value	Date													
INDUSTRIAL CONFIDENCE INDICATOR	EU	-28	11-92	-8	7	12-94	-3	-3	-4	-5	-7	-9	-10	-10	-8	-8	-7	-6
	Euro area	-31	07-93	-8	6	05-00	-4	-4	-5	-7	-8	-10	-11	-10	-8	-8	-7	-6
	BE	-33	04-93	-11	5	06-00	-2	-5	-3	-6	-7	-10	-11	-13	-13	-12	-11	-6
	CZ	-31	03-99	-1	27	06-00	12	11	7	8	7	5	4	5	7	6	6	10
	DK	-26	12-98	-2	16	09-94	-3	2	3	1	1	-5	0	-2	-4	2	0	3
	DE	-35	04-93	-11	11	09-90	-6	-6	-6	-9	-11	-13	-13	-13	-12	-11	-9	-8
	EE	-31	07-92	4	19	03-01	5	6	12	15	17	13	15	11	12	15	13	19
	EL	-12	09-90	0	13	03-00	-4	-4	-3	-4	-7	-4	-9	-10	-10	-8	-6	-6
	ES	-44	01-93	-9	7	04-00	-1	-4	-1	-5	-4	-6	-7	-8	-5	-5	-4	-5
	FR	-41	06-93	-8	15	06-00	-3	-1	-5	-5	-9	-10	-12	-9	-8	-8	-9	-7
	IE	-23	11-01	-2	21	11-99	-9	-7	-12	1	0	-2	-8	-2	3	-4	-4	-11
	IT	-22	04-93	-4	13	07-95	-1	-2	-2	-6	-7	-7	-9	-9	-6	-4	-3	-3
	CY	-9	04-03	3	13	04-02	1	10	4	3	6	3	5	0	3	0	1	-1
	LV	-45	04-93	-11	7	05-04	3	2	2	3	3	4	5	4	5	6	7	5
	LT	-37	11-98	-14	5	10-05	-3	-12	-9	-7	-3	-4	-8	-2	4	-3	4	5
	LU	-35	05-92	-10	26	04-95	-1	-7	-1	-6	2	-9	-18	-17	-20	-21	-18	-10
	HU	-15	05-99	-3	8	12-97	-11	-5	-7	-12	-12	-14	-14	-12	-11	-10	-6	-5
	NL	-12	05-93	-2	6	10-00	-2	-3	-2	-2	-1	-2	-2	-4	-6	-4	-2	1
	AT	-30	06-93	-12	8	03-90	-6	-8	-7	-9	-11	-11	-10	-11	-12	-10	-7	-9
	PL	-29	10-01	-14	9	09-97	-10	-10	-11	-11	-13	-14	-14	-13	-12	-13	-11	-13
PT	-28	06-93	-7	7	03-98	-7	-11	-9	-11	-10	-6	-10	-14	-14	-12	-10	-7	
SI	-21	03-99	-3	18	06-00	3	1	0	-2	0	-3	-3	-2	-3	-2	-1	0	
SK	-22	12-95	5	26	05-96	13	2	9	13	12	11	6	8	-2	-1	7	2	
FI	-24	01-93	2	30	10-94	5	5	3	4	6	-3	-2	10	19	15	12	11	
SE	-29	10-01	-5	15	05-00	5	4	6	0	-7	-9	-7	-10	-10	-7	-10	-2	
UK	-40	02-91	-11	11	02-95	-4	-3	-4	0	-5	-10	-13	-17	-10	-17	-10	-10	
PRODUCTION EXPECTATIONS	EU	-16	11-92	6	23	12-94	12	9	9	9	7	5	4	4	5	7	7	9
	Euro area	-18	12-92	5	21	12-94	10	8	7	6	6	4	2	4	4	6	7	8
Component of the industrial confidence indicator	BE	-36	04-93	-3	16	12-94	6	2	0	0	3	3	-1	-4	-4	-2	-2	4
	CZ	-26	05-93	22	61	05-95	33	28	19	22	24	22	26	31	30	28	28	35
	DK	-23	12-98	10	30	02-98	10	16	14	10	17	4	12	7	-1	10	8	14
	DE	-26	11-92	1	20	12-94	5	2	2	2	0	-2	-3	-1	-1	3	4	5
	EE	-70	04-92	19	68	03-02	13	19	24	37	38	25	32	22	17	27	23	30
	EL	3	02-91	26	44	02-00	20	23	22	23	19	22	14	19	14	16	17	18
	ES	-19	01-93	5	17	12-00	12	7	9	3	9	12	9	5	5	5	7	6
	FR	-30	07-93	6	27	10-00	11	16	9	9	7	3	3	7	7	7	4	7
	IE	-22	11-01	9	35	11-99	-4	3	-10	24	1	7	-3	4	17	2	-3	-10
	IT	-12	12-92	13	31	12-94	18	16	14	14	10	11	9	7	9	11	13	15
	CY	1	05-02	13	34	12-04	17	34	9	5	19	10	23	4	16	5	10	11
	LV	-21	04-93	15	41	03-02	21	21	18	19	19	19	23	20	21	23	24	21
	LT	-22	04-94	12	35	08-97	22	8	6	6	16	26	10	19	29	20	29	26
	LU	-42	10-91	-4	28	04-95	6	-2	16	14	15	0	-10	5	-10	-15	-11	-3
	HU	-10	06-05	12	34	12-97	-5	7	6	-3	-6	-6	-8	-10	-2	-4	8	7
	NL	-4	04-93	6	15	11-99	5	2	2	5	8	6	6	4	-2	5	6	13
	AT	-19	06-93	4	18	11-03	11	6	9	6	11	9	11	8	6	7	13	10
	PL	-4	10-01	20	44	02-03	17	17	16	17	15	14	16	16	16	17	21	17
	PT	-11	03-93	5	21	01-97	4	0	-5	-3	0	10	1	-5	-5	-4	-4	0
	SI	10	10-01	23	42	06-00	24	28	30	26	29	24	28	24	19	24	27	26
SK	-12	12-95	31	62	12-97	46	6	15	38	36	37	27	26	8	6	40	25	
FI	-26	06-91	13	50	07-05	35	28	27	20	30	14	10	32	50	41	38	30	
SE	-19	05-91	15	46	05-00	30	35	38	23	9	12	18	15	11	16	13	29	
UK	-38	02-91	5	33	02-95	13	3	8	16	9	5	0	-4	5	0	5	3	
ORDER BOOKS	EU	-50	07-93	-20	1	02-95	-13	-11	-12	-15	-17	-20	-22	-22	-19	-20	-18	-17
	Euro area	-54	07-93	-19	4	06-00	-12	-12	-11	-16	-17	-19	-21	-21	-18	-18	-16	-16
Component of the industrial confidence indicator	BE	-51	05-93	-21	11	06-00	-9	-11	-9	-18	-17	-23	-26	-28	-25	-29	-23	-20
	CZ	-50	12-98	-7	30	01-01	4	5	3	3	-3	-3	-6	-6	-5	-4	-3	-3
	DK	-41	04-99	-6	32	12-94	-10	-2	2	-3	-5	-7	-8	-6	2	4	3	7
	DE	-61	07-93	-24	12	07-90	-15	-12	-13	-17	-19	-22	-22	-23	-21	-23	-19	-18
	EE	-43	10-92	1	29	06-01	1	2	7	5	10	10	6	8	12	10	10	21
	EL	-31	06-05	-13	7	05-98	-18	-20	-17	-21	-24	-20	-24	-31	-25	-24	-22	-20
	ES	-65	01-93	-16	11	07-98	-2	-7	-3	-8	-10	-14	-14	-15	-8	-7	-7	-11
	FR	-64	06-93	-16	27	06-00	-13	-14	-12	-14	-19	-17	-21	-17	-16	-16	-19	-15
	IE	-36	06-93	-7	24	12-99	-12	-10	-13	-14	2	-9	-7	-4	-3	-8	-1	-17
	IT	-47	06-93	-16	13	02-95	-12	-11	-12	-21	-20	-22	-24	-24	-20	-14	-14	-16
	CY	-39	02-03	-18	-3	07-05	-13	-12	-8	-12	-6	-4	-8	-9	-3	-8	-7	-12
	LV	-79	07-93	-40	-7	12-03	-17	-19	-18	-16	-14	-13	-15	-13	-12	-9	-9	-11
	LT	-79	11-98	-42	-9	11-93	-27	-40	-29	-25	-24	-30	-29	-24	-18	-24	-17	-15
	LU	-64	02-92	-18	34	12-97	-4	-7	-12	-20	-11	-16	-23	-37	-30	-38	-24	-18
	HU	-40	03-03	-19	0	04-98	-20	-20	-24	-28	-23	-33	-31	-29	-27	-25	-20	-16
	NL	-25	01-93	-8	6	11-00	-6	-6	-4	-4	-5	-8	-7	-9	-9	-10	-6	-5
	AT	-57	04-96	-25	11	03-90	-22	-23	-25	-27	-32	-31	-27	-30	-31	-31	-26	-29
	PL	-77	01-02	-58	8	09-97	-43	-46	-47	-48	-51	-53	-54	-54	-54	-53	-52	-54
	PT	-52	07-93	-19	9	03-98	-19	-29	-15	-21	-24	-26	-26	-31	-30	-30	-21	-20
	SI	-51	03-99	-19	12	06-00	-7	-11	-14	-19	-14	-18	-19	-15	-14	-13	-16	-14
SK	-70	03-99	-8	49	09-94	0	4	10	5	3	-8	-8	-4	-14	-4	-13	-14	
FI	-70	09-91	-13	40	11-94	-4	2	1	6	2	0	-4	-2	1	-1	-2	9	
SE	-67	03-92	-23	25	12-94	-5	-8	-7	-11	-14	-20	-22	-27	-26	-24	-25	-17	
UK	-62	07-91	-22	11	02-95	-13	-5	-13	-7	-9	-21	-						

TABLE 2a: (continued) Monthly survey of manufacturing industry (s.a.)^(a)

		Since 01/1990						2004		2005									
		Min.		Ave.		Max.		Nov.	Dec.	Jan.	Feb.	Mar.	Apr.	May	June	July	Aug.	Sep.	Oct.
		Value	Date	Value	Date	Value	Date												
STOCKS OF FINISHED PRODUCTS ^(b)	EU	3	12-94	11	22	06-93	8	8	9	9	12	13	14	13	12	12	10	10	
	Euro area	2	11-94	11	24	04-93	8	9	9	10	12	13	14	12	11	11	10	10	
Component of the industrial confidence indicator	BE	-4	02-95	9	26	10-01	2	5	0	1	6	12	11	7	11	5	7	3	
	CZ	-12	04-00	17	46	08-93	0	0	3	0	0	5	9	11	2	7	8	4	
	DK	-7	03-94	10	28	06-99	8	9	5	3	10	11	4	7	13	6	10	11	
	DE	-9	09-90	10	25	07-93	8	9	9	11	13	13	15	14	13	13	11	11	
	EE	-16	05-92	6	39	06-93	1	2	-5	-2	-4	-5	-5	-4	-7	-7	-6	-7	
	EL	1	06-94	12	22	09-90	14	13	13	13	15	16	18	18	18	15	13	16	
	ES	-1	11-02	15	47	01-93	12	11	10	11	12	16	14	15	13	13	12	8	
	FR	-2	04-00	14	34	06-93	6	6	12	10	15	16	18	17	14	13	13	13	
	IE	-13	12-99	6	23	11-93	11	12	12	7	2	5	15	5	6	7	8	5	
	IT	-1	07-95	8	17	10-90	7	10	9	10	11	11	11	8	9	10	8	7	
	CY	-34	09-01	-14	4	07-05	1	-7	-11	-15	-6	-3	-1	-5	4	-2	-1	3	
	LV	-12	03-04	7	43	07-93	-4	-5	-6	-5	-4	-5	-7	-4	-4	-5	-5	-5	
	LT	-16	01-95	12	49	01-94	3	4	3	2	1	7	4	2	-1	4	-1	-3	
	LU	-22	03-95	8	31	03-02	4	11	8	12	0	10	19	18	20	10	18	10	
	HU	-7	11-03	3	15	12-98	7	2	3	4	8	3	2	-2	4	3	6	5	
	NL	-1	12-94	5	11	06-91	5	4	5	5	5	5	4	6	5	6	6	6	
	AT	4	03-90	14	26	04-96	6	6	6	7	12	11	12	11	10	8	9	10	
	PL	-11	10-94	3	20	02-99	2	2	3	2	1	2	2	1	2	4	3	3	
	PT	-7	09-04	8	25	06-93	5	3	8	8	6	2	5	6	8	4	6	0	
	SI	-1	06-00	14	28	02-96	8	15	16	14	15	16	17	15	14	15	15	12	
SK	-27	02-01	9	55	05-94	8	3	-3	4	2	-4	1	0	1	5	7	5		
FI	-20	04-95	4	31	01-96	15	15	18	14	13	23	13	-1	-8	-6	0	5		
SE	3	03-00	17	37	11-01	10	16	13	12	15	20	17	17	15	12	18	17		
UK	6	03-04	17	32	11-98	12	7	8	8	13	15	17	20	19	23	10	13		
PRODUCTION TREND OBSERVED IN RECENT MONTHS	EU	-23	01-93	-1	19	01-95	2	6	4	4	-1	-5	-3	-2	1	-2	0	1	
	Euro area	-25	01-93	-2	16	01-95	-1	4	3	1	-4	-5	-4	-4	-1	-3	-1	0	
BE	-20	02-93	-1	16	05-97	-6	-1	4	-4	-1	-4	-6	-10	-6	-6	3	2		
CZ	-32	10-98	12	42	11-00	22	31	24	20	8	8	11	7	14	12	24	23		
DK	-21	04-99	10	41	09-94	12	-1	2	3	-1	1	8	12	15	9	8	11		
DE	-32	02-02	-4	22	12-90	-7	3	-1	-3	-8	-9	-8	-6	-1	-8	-1	0		
EE	-24	03-99	13	56	06-01	12	10	14	9	22	30	27	22	22	22	22	21		
EL	-5	10-90	14	36	01-00	4	5	10	6	7	-3	3	4	6	4	1	6		
ES	-44	04-93	0	21	04-95	-1	3	6	5	2	-6	1	0	5	0	-4	-2		
FR	-38	07-93	4	36	01-95	14	7	16	15	9	5	4	9	8	7	6	3		
IE	-25	10-01	6	38	03-00	6	-17	-4	9	-3	10	6	4	6	13	-6	3		
IT	-36	06-93	-10	14	03-95	-10	-6	-10	-13	-15	-16	-16	-18	-16	-7	-10	-12		
CY	-36	04-03	-9	12	04-05	-14	-3	-7	-7	-5	12	1	-6	-2	-1	-14	-1		
LV	-49	04-93	3	29	06-01	7	13	10	9	11	13	9	16	16	11	15	12		
LT	-36	07-94	1	34	04-98	11	11	7	7	-6	-16	8	7	21	16	19	21		
LU	-41	04-92	-2	32	04-95	19	21	17	12	-7	-2	-19	-9	-18	-5	0	-2		
HU	-30	06-99	-2	27	04-98	-4	-6	-9	-11	-16	-23	-13	-15	-13	-9	3	1		
NL	-12	05-93	3	14	10-97	-1	2	3	-2	-1	3	4	-3	0	-5	10	4		
AT	-28	06-93	5	27	03-90	16	12	14	7	4	4	6	5	9	9	6	12		
PL	-18	07-96	0	23	04-04	6	8	21	5	-7	-14	-3	2	8	0	5	5		
PT	-18	01-93	-2	15	08-94	-9	-3	1	-5	-10	-18	-5	-12	-12	-7	-3	2		
SI	-20	02-99	8	39	05-00	6	11	7	1	2	8	6	10	8	-8	9	9		
SK	-30	12-96	16	78	12-03	46	69	17	27	24	30	34	34	13	5	-20	-2		
FI	-28	06-91	10	53	12-04	30	53	27	42	8	13	5	-3	7	-4	3	21		
SE	-28	07-91	9	48	12-94	24	18	15	17	13	12	8	6	2	3	17	23		
UK	-46	06-91	-2	34	03-95	7	14	3	13	9	-7	-4	4	5	-5	-10	-6		
EXPORT ORDER BOOKS	EU	-45	01-93	-20	1	02-95	-11	-11	-12	-12	-15	-19	-20	-21	-18	-19	-17	-16	
	Euro area	-52	06-93	-21	2	06-00	-11	-12	-10	-12	-15	-18	-19	-19	-18	-18	-17	-15	
BE	-56	05-93	-22	7	06-00	-4	-10	-8	-22	-20	-30	-32	-34	-31	-35	-24	-23		
CZ	-41	12-98	-3	26	09-00	1	4	1	0	-10	-9	-8	-8	-10	-6	-7	-6		
DK	-39	04-99	-4	25	09-94	-8	1	-1	-4	-6	-8	-8	-6	6	2	4	2		
DE	-60	08-93	-27	0	02-90	-11	-11	-9	-8	-12	-14	-13	-15	-16	-17	-13	-12		
EE	-37	03-99	1	25	03-01	-5	-5	-1	0	-4	3	0	3	1	2	-1	2		
EL	-36	05-03	-16	13	03-95	-21	-24	-17	-18	-19	-21	-20	-27	-21	-23	-24	-19		
ES	-55	01-93	-19	6	05-95	-15	-11	-9	-15	-15	-23	-22	-24	-18	-19	-24	-25		
FR	-65	07-93	-13	36	06-00	-7	-9	-8	-9	-13	-14	-21	-18	-15	-15	-16	-12		
IE	-53	09-93	-7	38	04-00	2	-8	-2	-20	-1	-27	-5	-2	-5	7	-5	-23		
IT	-43	09-92	-19	19	02-95	-15	-16	-15	-20	-23	-24	-26	-27	-25	-20	-20	-18		
CY	-53	05-03	-26	5	05-05	-13	-22	-19	-34	-4	-18	5	-10	-12	-10	-14	-25		
LV	-59	12-98	-36	-15	12-03	-23	-21	-21	-20	-19	-23	-21	-20	-19	-16	-20	-16		
LT	-65	04-99	-36	-14	06-01	-32	-45	-31	-27	-31	-29	-29	-29	-22	-25	-18	-19		
LU	-75	11-91	-23	45	04-00	-18	-20	-25	-26	-28	-27	-41	-45	-41	-45	-30	-25		
HU	-44	12-02	-16	7	02-98	-21	-27	-24	-30	-29	-32	-30	-28	-32	-30	-26	-25		
NL	-24	01-93	-6	11	09-00	-2	-2	1	-1	-3	-3	-6	-8	-5	-7	-4	-3		
AT	-58	04-96	-34	-1	03-90	-31	-34	-35	-37	-39	-41	-39	-39	-41	-42	-37	-39		
PL	-75	05-99	-57	13	07-97	-50	-52	-52	-52	-58	-56	-59	-57	-56	-59	-57	-57		
PT	-59	04-93	-17	22	01-95	-17	-16	-20	-18	-22	-25	-28	-30	-26	-27	-23	-21		
SI	-53	05-99	-16	15	06-00	-4	-5	-11	-13	-13	-13	-14	-11	-12	-11	-14	-10		
SK	-57	03-99	-8	53	01-94	-4	4	6	7	1	-9	-8	-4	-8	1	-4	-6		
FI	-43	01-99	-8	42	01-95	-6	1	-3	-2	-6	-3	-7	-6	-4	-1	-5	5		
SE	-45	12-01	4	45	08-91	1	1	1	-7	-19	-19	-30	-28	-22	-20	-22	-16		
UK	-55	10-98	-22	19	04-95	-11	-6	-17	-8	-5	-24	-15	-22	-11	-				

TABLE 2a: (continued) **Monthly survey of manufacturing industry (s.a.)**^(a)

		Since 01/1990			2004		2005											
		Min.		Ave.	Max.													
		Value	Date		Value	Date	Nov.	Dec.	Jan.	Feb.	Mar.	Apr.	May	June	July	Aug.	Sep.	Oct.
EMPLOYMENT EXPECTATIONS	EU	-39	06-93	-15	2	11-00	-12	-14	-12	-12	-12	-14	-14	-15	-13	-14	-14	-13
	Euro area	-42	06-93	-14	4	11-00	-12	-14	-12	-12	-13	-14	-14	-15	-13	-13	-14	-13
	BE	-26	09-93	-9	9	09-00	-11	-10	-10	-8	-10	-12	-14	-16	-15	-15	-12	-11
	CZ	-58	06-99	-25	2	03-01	-4	-3	-5	-7	-7	-8	-10	-8	-11	-9	-5	-10
	DK	-23	06-93	-3	13	03-98	-6	-9	0	-3	3	-10	-4	-7	-9	1	-4	2
	DE	-52	06-93	-18	8	02-90	-14	-18	-17	-17	-21	-21	-19	-18	-17	-17	-17	-15
	EE	-78	04-92	-12	16	03-05	-1	2	8	11	16	14	13	8	1	4	4	9
	EL	-12	12-04	-2	12	05-02	-2	-12	-8	-6	-3	-11	-9	-9	-10	-8	-5	-6
	ES	-53	06-93	-9	9	03-01	-11	-9	-4	-2	-3	2	-1	-4	-8	-8	-8	-12
	FR	-50	09-93	-17	12	09-00	-19	-20	-17	-18	-12	-23	-21	-20	-15	-18	-21	-20
	IE	-34	12-92	-10	16	09-00	-21	-13	-10	-6	-5	-1	4	-4	1	-15	-11	-12
	IT	-30	08-96	-4	11	11-00	0	-5	-2	-2	-3	-3	-3	-7	-6	-3	-6	-5
	CY	-15	04-02	11	40	10-04	10	10	32	10	8	21	10	10	24	9	10	33
	LV	-51	04-93	-9	10	10-05	7	5	6	3	4	5	7	8	9	6	7	10
	LT	-59	04-94	-28	8	10-05	-2	-11	-12	-5	2	1	-10	-6	0	-4	1	8
	LU	-55	12-91	-27	1	09-01	-20	-16	-20	-19	-26	-16	-31	-23	-39	-29	-27	-24
	HU	-60	12-91	-17	10	10-97	-16	-10	-13	-14	-13	-16	-21	-19	-14	-12	-12	-15
	NL	-30	06-93	-8	15	06-90	-9	-11	-9	-9	-10	-11	-12	-10	-13	-10	-10	-7
	AT	-29	01-96	-10	6	09-00	-4	-4	-3	-3	-6	-6	-10	-8	-6	-10	-4	-4
	PL	-55	12-99	-24	-3	09-05	-7	-6	-8	-8	-4	-7	-6	-5	-5	-5	-3	-4
PT	-35	06-93	-15	-2	02-90	-20	-23	-19	-25	-22	-22	-21	-24	-20	-19	-23	-21	
SI	-42	10-95	-23	-10	07-04	-18	-19	-18	-18	-18	-18	-18	-17	-20	-24	-22	-21	
SK	-56	06-99	-24	2	06-96	-12	-18	-12	-14	-16	-18	-17	-15	-22	-20	-19	-18	
FI	-60	06-91	-16	15	12-00	-13	-14	-21	-6	-6	-3	-13	-12	1	-5	2	-1	
SE	-51	06-92	-19	23	12-94	-11	-14	-16	-18	-17	-23	-18	-30	-29	-23	-29	-26	
UK	-50	03-91	-20	2	06-97	-13	-12	-12	-12	-8	-12	-16	-21	-14	-16	-19	-15	
SELLING-PRICE EXPECTATIONS	EU	-13	01-99	5	26	02-95	13	13	10	10	6	2	0	-1	0	3	3	
	Euro area	-10	12-98	5	25	02-95	12	13	10	9	5	2	0	-1	1	1	4	3
	BE	-18	02-96	2	26	12-94	15	13	14	4	2	0	-6	-9	-2	-4	-1	5
	CZ	-6	12-98	20	71	03-95	19	10	11	10	11	5	2	-1	5	3	13	16
	DK	-12	11-01	-1	12	11-04	12	8	10	0	2	-2	-1	-3	-5	-2	-7	1
	DE	-8	12-93	6	23	02-95	12	15	15	11	6	2	-2	-1	-1	-1	3	1
	EE	-28	03-99	16	86	04-92	22	26	22	19	12	14	16	14	14	14	20	23
	EL	-4	01-99	17	41	10-90	11	9	9	10	9	7	8	5	7	6	6	7
	ES	-18	04-93	3	35	04-95	12	15	8	7	7	-4	1	2	1	3	4	4
	FR	-26	01-99	0	24	02-90	12	13	0	7	3	-1	0	-4	-4	-1	3	-3
	IE	-25	11-92	-3	29	11-03	1	-4	-5	2	-1	-8	12	-1	5	-4	1	5
	IT	-10	12-98	11	40	03-95	15	15	11	11	7	9	7	4	7	9	9	11
	CY	-9	10-01	6	38	10-03	7	6	3	-2	5	7	3	-2	2	4	10	-7
	LV	-17	12-98	16	50	07-94	24	28	24	19	17	17	15	18	18	20	26	18
	LT	-20	01-00	15	75	11-93	-5	-7	-8	1	7	7	-3	4	6	1	11	14
	LU	-50	08-91	-3	53	12-94	31	22	10	3	13	3	-3	-5	-11	-15	-11	-1
	HU	11	08-05	29	51	01-01	31	24	23	24	16	16	14	15	14	11	18	20
	NL	-7	01-99	4	20	12-94	10	9	11	1	1	-4	-1	-2	3	1	2	6
	AT	-23	03-96	-1	17	03-90	10	9	6	2	-1	0	-3	-2	-5	1	3	1
	PL	-6	06-02	14	46	01-93	1	-1	3	4	-5	-2	-4	-2	-4	0	-1	-5
PT	-9	05-03	8	29	10-90	-2	0	-7	3	1	-2	-5	-4	6	7	10	3	
SI	-24	04-99	-8	5	01-01	3	1	0	0	-3	-8	-10	-8	-7	-5	-6	-3	
SK	-33	03-01	30	81	04-95	6	20	-12	0	28	12	3	1	-3	8	-1	19	
FI	-34	03-96	2	49	08-94	14	14	17	31	15	4	3	2	20	6	9	4	
SE	-20	11-96	5	37	12-94	20	19	21	13	1	2	-2	1	-3	-1	6	6	
UK	-30	01-99	0	29	02-95	15	13	15	16	15	5	-1	-1	-8	-6	-6	1	

(a) The indicator is the arithmetic average of the balances (%) of the questions on production expectations, order-books and stocks (the last with inverted sign).

(b) Highest figure is considered as minimum, lowest figure is considered as maximum.

TABLE 2b: Quarterly survey of manufacturing industry

Capacity utilisation in manufacturing industry (%) (s.a.)^(a)

	Since 01/1990					2004				2005			
	Min.		Ave.	Max.		I	II	III	IV	I	II	III	IV
	Value	Date		Value	Date								
EU	77.4	III-93	81.8	85.5	I-90	80.8	80.9	82.2	82.0	81.9	81.2	81.1	81.2
Euro area	77.0	III-93	82.0	85.7	II-90	81.0	81.0	82.0	82.1	81.9	81.1	80.9	81.2
BE	74.5	II-93	80.0	84.8	I-01	79.4	79.6	81.5	80.9	80.9	79.4	78.2	79.1
CZ	70.9	IV-91	81.8	87.1	I-01	85.5	85.6	86.3	86.7	87.0	86.0	84.9	86.6
DK	76.4	II-93	81.9	86.1	III-98	81.5	81.9	83.0	82.8	81.9	83.3	84.3	84.1
DE	78.3	III-93	84.1	89.5	I-91	82.8	82.6	83.4	83.9	83.9	81.9	82.7	82.9
EE	52.2	IV-93	66.0	78.0	IV-05	73.0	75.5	74.3	74.8	75.7	77.5	77.6	78.0
EL	71.9	I-05	76.2	79.3	II-01	77.5	74.6	76.3	74.1	71.9	72.4	71.9	72.2
ES	71.1	III-93	78.1	81.0	III-98	77.0	79.7	79.8	79.3	80.1	80.1	80.6	80.1
FR	78.5	III-94	84.6	89.1	IV-00	84.2	83.2	84.3	84.6	84.0	84.6	82.5	82.9
IE	69.7	II-05	76.3	83.3	I-96	74.4	77.7	75.3	75.0	72.2	69.7	78.2	76.8
IT	71.6	III-93	76.4	80.2	I-90	76.3	75.8	76.9	76.7	76.4	76.4	75.9	76.7
CY	62.2	IV-02	70.9	76.0	IV-01	72.3	72.2	74.3	70.0	72.4	71.4	73.4	72.6
LV	44.6	II-93	60.1	75.0	III-05	74.9	72.7	72.7	69.1	70.1	71.7	75.0	71.1
LT	44.1	IV-95	55.9	72.1	IV-05	68.2	68.4	69.1	68.7	69.8	70.5	70.1	72.1
LU	77.8	IV-96	83.7	89.2	I-01	83.5	85.6	87.4	86.0	84.9	83.2	79.8	81.4
HU	76.1	I-96	80.0	87.1	IV-00	81.6	80.3	82.2	80.0	80.5	82.2	83.7	82.0
NL	80.3	III-93	83.7	86.2	II-90	82.1	82.8	83.1	82.7	82.3	82.0	81.7	82.1
AT	79.1	IV-02	81.9	85.0	III-00	80.0	80.4	82.3	82.4	82.2	81.8	81.3	81.3
PL	66.6	I-02	73.8	78.2	III-98	76.1	76.6	78.1	77.4	77.6	74.8	76.0	76.9
PT	72.6	IV-93	79.5	84.3	IV-03	80.6	79.3	81.4	80.2	81.6	79.2	79.9	79.2
SI	76.3	III-96	80.0	82.6	IV-05	81.9	81.6	81.7	81.2	81.7	82.5	81.9	82.6
SK	65.3	IV-03	78.6	87.1	II-01	78.6	71.3	74.4	84.2	75.6	79.1	78.4	80.2
FI	80.7	III-03	85.3	89.9	III-98	82.8	83.4	84.7	86.9	85.5	87.5	82.4	84.3
SE	82.2	III-01	85.1	88.5	IV-00	83.7	85.2	86.9	87.1	86.7	87.3	85.9	84.4
UK	77.4	I-93	81.1	85.4	II-95	78.7	79.7	82.7	81.0	81.3	80.2	80.3	79.4

Production capacity in manufacturing industry^{(a)(b)(c)}

	Since 01/1990					2004				2005			
	Min.		Ave.	Max.		I	II	III	IV	I	II	III	IV
	Value	Date		Value	Date								
EU	5	I-90	20	38	III-93	21	20	17	16	18	21	19	18
Euro area	2	I-90	18	38	II-93	20	19	17	16	17	20	19	17
BE	10	II-90	28	54	III-93	29	26	21	17	24	29	30	25
CZ	-7	II-00	7	28	III-99	7	7	2	0	2	7	6	3
DK	-5	I-98	16	33	II-93	19	16	6	9	10	16	11	5
DE	-6	IV-90	19	42	II-93	23	20	19	19	20	24	21	19
EE	-8	I-05	16	38	I-96	7	2	-6	3	-8	-5	2	-7
EL	0	II-00	12	24	III-05	2	12	13	14	18	20	24	20
ES	-2	II-00	7	20	II-93	11	7	5	3	5	6	4	5
FR	-13	III-00	16	46	III-93	14	15	14	9	10	17	14	11
IE	-4	III-00	12	29	III-93	19	18	23	15	17	11	13	11
IT	12	I-90	25	36	I-93	27	28	23	26	29	28	28	29
CY	-12	II-02	5	25	II-05	8	10	10	21	10	25	-1	2
LV	-6	III-03	17	53	III-93	4	0	-1	0	0	0	1	-1
LT	5	IV-02	28	68	IV-93	6	16	13	16	20	21	13	8
LU	-12	I-98	20	57	IV-96	40	25	3	-6	-4	6	11	7
HU	-41	IV-03	24	48	IV-05	20	17	15	42	23	38	33	48
NL	-3	I-01	5	16	III-93	8	7	2	2	4	2	5	9
AT	0	III-00	14	22	III-03	17	16	13	11	15	15	20	14
PL	14	II-05	33	56	III-92	20	31	23	17	16	14	17	16
PT	1	III-00	14	41	III-93	21	18	18	20	22	18	24	19
SI	8	II-01	21	41	III-96	17	11	9	10	13	14	15	11
SK	-12	III-04	6	27	I-94	2	0	-12	7	2	1	7	2
FI	-21	II-95	24	81	IV-91	29	29	20	7	11	15	13	16
SE	-19	III-00	7	30	IV-01	5	4	6	4	7	17	26	10
UK	10	II-95	32	55	III-91	33	32	25	27	27	32	23	28

TABLE 2b (continued): Quarterly survey of manufacturing industry

Estimated number of months' production assured by orders on hand in manufacturing industry (s.a.)^(a)

	Since 01/1990					2004				2005			
	Min.		Ave.	Max.		I	II	III	IV	I	II	III	IV
	Value	Date		Value	Date								
EU	2.7	III-93	3.1	3.6	II-90	3.3	3.3	3.4	3.3	3.3	3.2	3.3	3.3
Euro area	2.6	III-93	3.1	3.6	II-90	3.1	3.1	3.2	3.1	3.1	3.0	3.1	3.1
BE	2.8	III-03	3.2	4.2	III-90	2.9	3.1	3.1	3.2	3.1	3.0	3.1	3.3
CZ	7.4	III-03	13.1	22.5	II-01	9.8	10.9	7.9	10.1	10.1	10.3	8.1	9.3
DK	1.4	III-00	1.9	2.5	III-90	1.6	1.4	1.6	1.4	1.5	1.5	1.6	1.6
DE	2.4	IV-93	2.8	3.3	III-90	2.7	2.6	2.7	2.6	2.6	2.6	2.6	2.6
EE	3.9	II-05	5.5	7.2	II-02	4.1	4.5	4.4	4.8	4.8	3.9	5.0	4.8
EL	4.2	IV-05	5.6	6.6	III-90	6.2	4.7	4.5	4.9	4.8	4.5	4.5	4.2
ES	1.5	II-93	2.6	4.2	I-05	3.3	3.2	3.5	3.4	4.2	3.8	4.1	3.9
FR	2.5	III-97	3.2	4.4	I-02	3.7	3.5	3.7	3.3	3.2	2.9	3.3	3.2
IE	1.6	IV-93	2.5	3.7	III-05	3.0	2.9	3.0	3.0	3.2	2.6	3.7	3.5
IT	2.1	III-96	3.6	4.7	II-90	3.3	3.3	3.5	3.4	3.1	3.3	3.3	3.4
CY	2.7	III-01	3.8	4.8	II-05	3.8	3.1	4.0	4.7	4.4	4.8	3.7	4.5
LV	3.0	II-03	3.5	4.6	IV-05	3.2	3.0	3.3	3.4	3.0	3.5	3.6	4.6
LT	2.1	III-01	2.8	3.4	IV-05	3.0	2.8	2.9	3.2	3.0	2.7	3.0	3.4
LU	1.9	IV-93	2.7	3.4	I-05	2.9	3.1	3.3	3.2	3.4	3.4	3.0	3.1
HU	2.9	III-02	4.1	5.1	IV-00	4.0	3.8	4.6	4.2	5.0	3.8	4.1	4.6
NL	2.1	I-95	2.6	3.3	I-91	2.6	2.7	2.7	2.8	2.8	2.8	2.8	2.8
AT	2.9	I-01	3.8	5.9	IV-01	3.8	4.1	4.2	3.6	4.0	4.3	4.0	3.7
PL	5.3	III-01	6.3	7.8	I-05	7.1	7.4	6.8	7.0	7.8	7.6	7.3	7.2
PT	2.7	III-03	3.8	6.4	II-04	3.3	6.4	4.6	5.0	4.2	3.2	3.8	3.2
SI	2.8	IV-98	4.3	5.0	IV-00	4.3	4.4	4.1	4.1	3.9	3.9	4.0	4.2
SK	5.3	I-04	7.5	9.5	I-01	5.3	5.8	6.5	6.9	6.7	5.7	5.9	5.3
FI	2.5	II-05	3.3	4.3	III-98	2.5	2.7	2.5	3.1	3.7	2.5	3.1	3.1
SE	1.8	IV-96	2.3	3.3	II-04	3.3	3.3	2.9	3.0	2.8	3.1	3.1	2.9
UK	2.4	I-95	3.1	3.8	I-99	3.1	2.8	3.6	3.3	3.2	3.3	3.6	3.2

New orders in manufacturing industry (s.a.)^{(a)(c)}

	Since 01/1990					2004				2005			
	Min.		Ave.	Max.		I	II	III	IV	I	II	III	IV
	Value	Date		Value	Date								
EU	-21	IV-92	1	20	I-95	7	15	12	8	6	-4	2	5
Euro area	-22	IV-92	1	18	I-95	7	14	13	7	7	-3	4	5
BE	-24	I-96	-4	20	IV-97	-2	9	12	8	0	-18	-7	-2
CZ	-11	IV-01	9	27	I-04	27	2	20	24	19	0	9	15
DK	-23	I-99	6	37	III-94	10	18	18	10	4	-3	14	15
DE	-31	I-02	0	22	II-04	12	22	16	5	6	-4	8	8
EE	-14	IV-01	13	36	IV-05	26	28	29	22	21	29	30	36
EL	-5	II-03	11	23	IV-97	8	12	3	6	3	1	5	1
ES	-8	II-93	5	14	I-04	14	11	10	5	7	13	12	3
FR	-45	III-93	-1	32	II-00	3	11	14	11	17	0	3	6
IE	-18	IV-01	2	28	III-95	-2	12	-1	-8	-14	-5	2	-16
IT	-34	IV-91	3	28	IV-94	-4	2	5	8	2	-5	-6	2
CY	-42	II-03	-16	-5	II-04	-7	-5	-18	-17	-20	-9	-9	-12
LV	7	IV-01	13	22	IV-03	19	20	10	15	13	12	17	18
LT	-10	II-02	8	22	II-04	17	22	12	17	-4	3	13	15
LU	-48	I-93	-7	32	I-00	-6	21	19	3	-8	-23	-16	-7
HU	-21	II-05	-2	23	III-00	-1	5	-3	-10	-10	-21	-11	-2
NL	-12	II-03	7	19	IV-99	7	9	12	3	4	3	7	16
AT	-30	II-96	2	28	II-00	14	13	12	17	10	0	4	9
PL	-17	III-02	14	45	I-98	22	29	22	13	16	-6	6	9
PT	-37	III-93	-7	23	IV-94	-11	-15	3	-2	-6	-17	-22	-11
SI	-10	IV-01	5	17	IV-04	8	16	11	17	8	6	9	9
SK	4	III-05	31	52	II-00	8	31	19	38	7	28	4	24
FI	-30	III-01	9	49	I-00	9	28	24	35	18	-7	-4	2
SE	-38	I-91	4	48	II-00	14	31	27	18	14	1	-7	24
UK	-46	II-91	-6	29	I-95	5	13	3	10	-7	-19	-6	-12

TABLE 2b (continued) : Quarterly survey of manufacturing industry

Export volume expectations in manufacturing industry (s.a.) ^{(a) (c)}

	Since 01/1990					2004				2005			
	Min.		Ave.	Max.		I	II	III	IV	I	II	III	IV
	Value	Date		Value	Date								
EU	-10	IV-01	7	21	I-95	11	14	12	14	10	7	8	10
Euro area	-11	II-93	6	20	I-95	9	15	13	15	9	8	8	10
BE	-26	I-96	-2	35	IV-97	-1	12	14	12	-1	-20	-9	-3
CZ	0	IV-01	29	54	IV-97	16	15	28	39	21	17	29	40
DK	-2	IV-98	12	24	I-98	13	15	19	15	15	7	9	10
DE	-16	IV-92	5	17	I-95	10	16	14	17	12	14	13	15
EE	2	IV-01	18	38	III-00	20	15	12	19	25	24	15	21
EL	6	III-03	22	41	IV-97	15	25	17	18	14	13	16	17
ES	-8	II-93	4	12	III-97	3	8	7	5	3	10	4	9
FR	-34	III-93	5	29	I-95	16	20	15	21	11	-1	-1	8
IE	-33	IV-01	5	48	II-04	8	48	-13	12	-12	-18	7	-29
IT	-3	II-92	13	27	IV-94	8	14	14	11	7	9	8	6
CY	-10	IV-04	19	40	IV-02	22	4	1	-10	17	30	17	14
LV	-2	IV-98	15	24	IV-00	11	15	11	18	16	18	18	18
LT	-11	II-94	12	36	III-97	7	28	18	21	13	20	30	23
LU	-58	III-91	-7	42	II-00	-5	18	8	0	-8	-19	-10	8
HU	-3	IV-01	11	32	IV-00	15	16	12	11	5	4	-2	8
NL	-11	III-03	8	22	III-00	4	12	7	7	4	5	4	5
AT	-8	IV-01	6	15	IV-03	10	8	8	10	11	13	8	9
PL	0	IV-01	15	25	III-04	21	22	25	22	10	17	16	16
PT	-24	III-93	6	30	IV-94	0	-12	-1	-3	-5	-7	-8	-3
SI	3	IV-95	23	40	IV-04	31	27	30	40	28	28	21	29
SK	-15	I-04	35	75	I-96	-15	49	0	35	22	40	13	17
FI	-21	I-03	17	53	III-05	17	10	42	23	24	13	53	23
SE	-21	IV-01	20	49	I-04	49	27	32	38	32	11	13	18
UK	-34	IV-01	1	30	III-95	5	2	-4	-3	2	-2	-3	2

(a) Data collected in January, April, July and October each year.

(b) Answers to the questions whether, taking into account the level of order-books or production, capacity is more than sufficient (+), sufficient (=) or less than sufficient (-). Thus, negative balances (capacity less than sufficient) indicate high levels of capacity utilisation, whereas positive balances (capacity more than sufficient) are associated with low levels of capacity utilisation.

(c) Balances: i.e., differences between the percentages of respondents giving positive and negative replies.

TABLE 2c: **Capacity utilisation by industrial branch** ^(a) (s.a.)
Degree of capacity utilisation in %

		Since 01/1990						2004				2005			
		Min.		Ave.	Max.		I	II	III	IV	I	II	III	IV	
		Value	Date	Value	Date										
CONSUMER GOODS ^(b)	EU	78.0	III-02	80.5	85.9	II-90	79	79.2	79	78.9	78.3	79.0	79.1	78.5	
	Euro area	77.3	I-05	80.2	85.4	II-90	78.3	78.6	78.2	78.3	77.3	78.3	78.3	78.1	
INVESTMENT GOODS ^(b)	EU	75.7	IV-93	83.1	87	IV-00	83.2	83	84.4	84	83.7	83.8	82.9	82.8	
	Euro area	75.7	IV-93	83.8	88.1	IV-00	83.8	83.2	84.4	84.1	84.5	84.2	83.2	83.1	
INTERMEDIATE GOODS ^(b)	EU	77.2	III-93	82	85.9	I-90	80.1	81.2	82	82.6	82.6	80.4	80.7	81.7	
	Euro area	76.8	IV-93	82.2	86.4	I-90	80.3	81.1	81.7	82.7	82.4	80.3	80.8	81.8	
FOOD AND BEVERAGES	EU	76.5	IV-04	79.2	82.5	II-91	79.2	77.9	78.9	76.5	78.2	77.7	78.5	76.9	
	Euro area	76.5	I-94	78.3	81.8	II-91	78.5	78	77.6	76.8	77.5	77.3	77.3	76.9	
TEXTILES	EU	75.3	III-05	79.7	84.3	I-90	78.1	76.1	77	76.4	76.5	76.6	75.3	76.3	
	Euro area	75.0	III-05	79.5	84.7	I-90	77.7	75.5	76.4	76.2	76.6	76.7	75	75.4	
WOOD AND WOOD PRODUCTS	EU	76.3	II-92	81.2	84.5	II-95	81.1	80.2	81.7	81.7	81.8	80.6	80.6	82.5	
	Euro area	76.3	II-92	81.2	84.8	IV-90	80.7	79.3	80.6	81.2	81.0	79.6	79.9	81.4	
PRINTING AND PUBLISHING	EU	77.0	III-03	81.1	85.6	III-90	80.7	80.8	80.5	80.9	81.2	80.9	81	80.4	
	Euro area	77.2	III-03	81.3	86.1	III-90	81.5	81.2	80.1	80.4	81.4	79.8	80.2	80.3	
NON-METALLIC MINERAL PRODUCTS	EU	76.1	IV-93	80.4	84.2	II-90	78.4	80.1	81.5	81.6	81.2	79.1	81.2	81.5	
	Euro area	76.0	IV-93	80.6	85.2	II-90	79.1	79.1	81.2	81.3	80.2	79.1	81.4	81.9	
BASIC METALS	EU	73.0	III-93	82.9	89.3	IV-97	83.3	84.9	86.1	87.5	87.5	84.0	81.7	83.3	
	Euro area	72.8	I-93	83.1	89.2	IV-97	82.8	84.8	86.3	88.3	87.0	83.8	81.6	83.4	
METAL PRODUCTS	EU	73.9	IV-93	80	85.4	I-90	79.3	78.3	80.2	80.4	80.1	79.2	79.2	78.7	
	Euro area	73.0	IV-93	79.7	85.3	I-90	79.3	78.4	80.3	80.3	79.7	78.9	78.5	78.6	
MACHINERY AND EQUIPMENT	EU	76.4	IV-93	82.6	88.7	II-90	81.9	81.7	83.2	83.1	83.9	83.9	83.7	83.8	
	Euro area	75.3	IV-93	83.1	89.4	II-90	82.8	82.3	83.2	83.4	85.0	84.1	84.6	84.2	
MEDICAL AND OPTICAL INSTRUMENTS	EU	79.1	I-94	83.5	88	I-01	82.2	83.6	83.8	84	83.5	83.9	83.7	84.1	
	Euro area	79.5	I-93	84	89.3	I-01	82.2	83.2	84.4	84	84.7	85.1	84.5	85.3	
MOTOR VEH., TRAILERS AND SEMI-TRAILERS	EU	74.0	III-93	86.1	90.8	II-90	86.8	85.9	88.1	87.1	86.7	85.8	83.7	83.5	
	Euro area	74.8	III-93	87.3	92.6	I-01	86.5	85.7	87.4	86.8	87.3	86.6	84.1	83.8	

(a) Data collected in January, April, July and October each year.

(b) The three major groups do not cover all industrial sectors.

TABLE 2c: **Export volume expectations by industrial branch** ^(a) (s.a.)

Balances: i.e., differences between the percentages of respondents giving positive and negative replies

		Since 01/1990						2004				2005			
		Min.		Ave.	Max.		I	II	III	IV	I	II	III	IV	
		Value	Date	Value	Date										
CONSUMER GOODS ^(b)	EU	-7	I-02	6.7	17.4	IV-00	7	16	6	10	11	8	10	8	
	Euro area	-7	III-93	7.7	18.9	IV-00	7	16	6	12	9	6	13	11	
INVESTMENT GOODS ^(b)	EU	-19	IV-92	5.7	21.5	I-95	12	20	16	20	9	8	7	9	
	Euro area	-23	IV-92	6.4	23.7	IV-04	11	21	21	24	10	11	6	7	
INTERMEDIATE GOODS ^(b)	EU	-14	IV-01	5.3	26.3	IV-94	11	13	12	11	8	5	6	9	
	Euro area	-13	IV-01	5.5	25.2	IV-94	11	16	13	9	7	5	8	9	
FOOD AND BEVERAGES	EU	-2	I-02	8.5	20.7	III-94	6	14	5	4	10	7	9	9	
	Euro area	-4	IV-92	8.6	19.4	I-95	6	15	4	7	10	6	9	11	
TEXTILES	EU	-16	IV-01	1.7	16.7	III-94	0	3	0	4	5	-4	-2	-5	
	Euro area	-17	II-93	3	17.9	III-97	-2	3	-3	7	5	-5	-1	-3	
WOOD AND WOOD PRODUCTS	EU	-11	IV-90	4.6	21.1	IV-94	6	17	10	0	0	1	15	14	
	Euro area	-10	II-03	2.7	17.9	II-94	4	14	12	5	-1	0	13	13	
PRINTING AND PUBLISHING	EU	-10	III-94	0.7	15.8	I-95	-2	9	4	4	5	-5	3	-3	
	Euro area	-13	IV-93	2.6	19.4	I-91	3	6	7	9	1	1	11	-3	
NON-METALLIC MINERAL PRODUCTS	EU	-14	IV-01	4.1	19.7	I-95	-4	10	4	7	-1	6	0	4	
	Euro area	-10	II-93	4.4	18.7	I-95	-4	8	2	4	4	9	3	5	
BASIC METALS	EU	-25	IV-01	1.8	26.7	III-94	16	13	10	18	3	-6	-7	9	
	Euro area	-25	IV-01	0.6	25.8	IV-94	14	12	9	14	-1	-6	-4	8	
METAL PRODUCTS	EU	-15	IV-01	2.7	19.9	I-95	6	11	5	12	11	8	4	10	
	Euro area	-14	II-93	2.6	18	I-95	4	9	3	12	13	8	5	9	
MACHINERY AND EQUIPMENT	EU	-16	IV-01	5.2	25.2	I-95	14	15	19	23	12	10	12	11	
	Euro area	-15	II-93	5.4	25.5	IV-94	11	14	17	20	14	11	11	11	
MEDICAL AND OPTICAL INSTRUMENTS	EU	-16	IV-01	11.7	26.4	III-95	14	17	16	23	22	25	20	11	
	Euro area	-20	II-93	10.5	27	IV-97	8	13	17	25	21	27	26	5	
MOTOR VEH., TRAILERS AND SEMI-TRAILERS	EU	-33	III-93	5	28.1	II-98	14	23	18	16	-4	-2	-2	1	
	Euro area	-38	III-93	5.9	35.5	II-98	14	30	31	28	0	6	-5	4	

(a) Data collected in January, April, July and October each year.

(b) The three major groups do not cover all industrial sectors.

TABLE 3: Monthly survey of services (s.a.)^(a)

		Since 01/1990			2004		2005											
		Min.		Ave.	Max.		Nov.	Dec.	Jan.	Feb.	Mar.	Apr.	May	June	July	Aug.	Sep.	Oct.
		Value	Date	Value	Date													
SERVICES CONFIDENCE INDICATOR	EU	-8	03-03	17	32	08-98	13	12	14	13	10	8	9	9	11	11	11	14
	Euro area	-7	03-03	18	34	08-98	11	10	13	10	9	8	10	9	12	9	11	15
	BE	-7	03-03	13	33	03-98	10	11	15	14	11	12	3	9	6	5	14	14
	CZ	32	06-05	40	47	07-02	36	39	37	39	38	37	37	32	32	37	40	38
	DK	11	10-01	26	37	04-04	33	37	34	33	34	33	34	32	30	32	34	31
	DE	-23	12-02	24	52	03-99	11	8	11	6	5	4	6	7	10	12	9	14
	EE	5	11-04	23	34	11-02	5	11	13	17	20	23	23	27	31	23	26	25
	EL	-14	04-03	27	62	08-00	11	6	20	18	23	22	16	11	10	12	13	21
	ES	10	10-04	31	56	06-98	13	16	15	12	14	17	27	25	21	23	19	20
	FR	-22	06-93	3	25	06-90	10	11	11	9	8	6	7	10	11	10	10	11
	IE	-14	05-03	15	44	08-98	-10	4	-2	-9	-4	9	-2	-12	7	-6	-2	10
	IT	-5	11-01	17	44	02-98	13	10	19	13	16	12	10	-1	11	0	14	23
	CY	-21	09-02	4	19	06-05	12	11	11	13	18	15	7	19	15	10	4	3
	LV	7	03-02	11	15	07-05	12	12	11	12	14	13	12	13	15	13	14	13
	LT	9	04-05	18	30	03-03	10	20	16	12	12	9	16	16	25	17	23	28
	HU	-10	10-04	1	14	03-02	-9	-7	-6	-1	-5	-8	-4	-8	-4	-1	0	2
	NL	3	06-03	17	35	12-97	7	8	7	11	7	10	6	9	6	4	6	9
	AT	0	01-02	15	30	03-98	16	16	13	12	9	12	10	7	10	9	8	8
	PL^(m)	-8	03-03	1	8	08-05	3	1	7	8	5	8	7	5	6	8	7	8
	PT	-17	05-03	7	29	06-01	12	0	-2	5	-3	-3	1	-4	-9	2	-1	-3
SI	12	05-05	23	32	10-02	23	22	21	21	14	12	12	15	19	18	18	14	
SK	27	09-05	46	60	06-03	51	52	34	38	33	37	33	33	40	31	27	28	
FI	-12	09-03	26	61	09-00	31	30	38	33	32	25	34	38	41	41	40	37	
SE	-24	01-03	17	46	12-00	29	23	35	30	32	31	27	32	32	26	34	37	
UK	-20	12-02	14	37	10-97	19	19	10	24	3	-1	1	-1	3	10	3	3	
ASSESSMENT OF BUSINESS SITUATION	EU	-19	03-03	13	37	06-00	9	9	12	8	0	0	1	0	4	2	7	9
	Euro area	-18	03-03	15	39	09-00	8	8	12	6	1	1	1	1	5	-1	7	10
	BE	-27	12-01	-3	28	01-98	-2	-5	0	-5	-2	-6	-16	-9	-10	-7	3	0
	CZ	48	06-05	59	72	07-02	55	59	57	60	58	58	60	48	48	57	60	55
	DK	4	05-03	23	41	04-00	24	29	27	27	28	29	31	30	27	25	31	26
	DE	-35	01-03	25	63	12-98	11	8	10	5	-1	2	3	7	9	9	8	11
	EE	1	11-04	27	48	11-02	1	9	14	19	24	27	29	30	35	31	34	27
	EL	-42	04-03	11	58	09-00	11	0	19	22	28	26	17	9	8	10	13	18
	ES	4	10-04	30	67	04-00	8	10	9	6	5	8	21	19	17	21	16	13
	FR	-35	09-96	-1	29	06-00	14	16	13	9	5	2	4	6	9	9	8	13
	IE	-20	06-05	19	52	11-99	-15	11	-4	-10	-7	4	-2	-20	15	-10	5	12
	IT	-39	06-05	11	44	02-01	-11	-3	18	0	-15	-18	-29	-39	-22	-35	-1	-1
	CY	-33	09-02	-4	16	04-04	7	6	8	5	10	5	5	10	7	4	-2	1
	LV	4	10-04	11	18	04-03	6	5	7	8	12	9	9	11	9	12	6	12
	LT	2	04-05	21	48	03-03	12	12	12	7	5	2	13	12	27	9	24	20
	HU	-15	10-04	0	19	05-02	-12	-9	-8	-6	-7	-13	-8	-11	-10	-5	-6	0
	NL	-26	07-93	12	70	12-00	9	8	18	19	13	13	19	17	15	14	16	27
	AT	-4	10-96	12	30	03-98	11	12	11	7	6	8	6	2	7	5	0	2
	PL^(m)	-12	02-04	3	9	11-03	3	3	6	6	0	3	3	1	4	4	5	6
	PT	-22	06-03	4	24	11-97	0	-11	2	-5	-7	-10	-9	-14	-17	-7	-6	-9
SI	4	04-05	26	44	10-02	25	18	20	20	17	4	5	10	14	10	10	8	
SK	13	10-05	42	66	01-03	52	42	23	30	28	34	29	25	36	18	15	13	
FI	-47	03-03	19	79	05-98	44	28	17	27	27	24	8	13	22	25	19	24	
SE	-60	01-02	7	41	01-05	37	23	41	37	36	27	31	30	37	27	26	36	
UK	-35	12-02	-1	27	12-97	2	8	2	9	-21	-17	-15	-18	-15	1	-4	-8	
EVOLUTION OF DEMAND IN RECENT MONTHS	EU	-12	01-02	14	32	03-98	13	12	11	10	9	7	12	8	11	13	10	14
	Euro area	-15	01-02	14	32	03-98	8	8	9	5	7	6	11	8	12	11	9	15
	BE	-9	03-03	13	41	11-97	3	11	10	15	12	12	8	17	13	5	12	18
	CZ	15	08-02	28	39	08-04	25	26	25	28	28	25	23	24	21	25	34	31
	DK	9	04-03	25	42	12-04	39	42	37	36	38	38	37	37	34	33	36	36
	DE	-32	02-02	19	43	09-98	10	9	9	2	4	2	7	6	11	14	9	16
	EE	3	11-04	23	43	11-03	3	12	9	16	21	21	22	24	29	24	33	31
	EL	-9	04-03	32	71	06-01	3	2	16	17	26	26	17	12	10	10	11	28
	ES	-1	08-02	24	56	06-98	10	15	11	5	5	11	24	19	16	19	13	16
	FR	-33	03-97	5	37	01-90	7	5	9	6	6	6	7	11	12	10	9	10
	IE	-24	10-03	9	46	08-98	-17	-10	-4	-15	-10	3	-4	-24	-2	-14	-15	4
	IT	-28	08-02	13	38	03-01	15	13	12	6	16	12	32	11	23	12	19	33
	CY	-34	08-02	-1	21	04-04	11	11	8	14	9	9	3	20	15	4	-6	-5
	LV	-4	02-02	8	15	02-05	11	13	9	15	14	13	10	13	15	13	11	11
	LT	0	08-02	18	35	10-05	5	18	14	24	16	7	17	18	29	22	25	35
	HU	-14	04-05	-2	13	03-02	-13	-9	-13	-3	-9	-14	-5	-8	-6	-1	1	1
	NL	-49	03-01	7	50	06-98	-11	-5	-16	-14	2	-14	-24	-21	-18	-22	-21	-25
	AT	-16	01-02	15	35	03-98	18	19	19	15	11	11	9	6	11	10	9	6
	PL^(m)	-18	02-03	-2	9	10-05	2	-1	5	5	3	3	3	2	2	4	4	9
	PT	-34	05-03	4	26	06-01	14	-6	-5	6	-5	-9	-2	-9	-9	5	-7	-6
SI	-1	03-05	18	29	08-04	20	15	15	21	-1	3	3	8	15	18	17	11	
SK	27	09-05	45	67	07-03	52	52	35	40	35	36	29	29	40	32	27	28	
FI	-20	09-03	28	83	04-01	22	29	35	36	34	32	43	53	32	54	48	47	
SE	-19	10-01	18	53	01-01	31	21	26	36	33	32	29	33	34	26	42	43	
UK	-19	07-03	15	43	01-97	33	27	11	31	7	0	12	-1	4	13	4	-1	

TABLE 3: (continued) **Monthly survey of services (s.a.)^(a)**

		Since 01/1990			2004		2005											
		Value	Date	Ave.	Value	Date	Nov.	Dec.	Jan.	Feb.	Mar.	Apr.	May	June	July	Aug.	Sep.	Oct.
				Max.														
EVOLUTION OF DEMAND EXPECTED IN THE MONTHS AHEAD	EU	-1	11-01	24	37	06-98	19	16	19	20	20	18	15	18	18	17	16	19
	Euro area	-5	11-01	23	38	05-00	18	14	18	18	19	18	16	17	18	18	16	19
	BE	-2	07-03	28	51	01-95	28	28	34	33	24	30	16	20	16	18	26	23
	CZ	24	01-04	32	44	01-03	27	30	28	29	27	27	28	25	27	28	27	27
	DK	16	09-01	30	41	12-04	36	41	37	35	35	33	34	30	28	36	33	30
	DE	-22	11-01	29	59	09-00	12	6	13	11	12	7	8	8	11	14	10	15
Component of the services confidence indicator	EE	7	06-04	19	32	11-02	10	13	15	16	16	20	20	29	29	13	12	17
	EL	5	05-03	37	75	09-01	18	16	23	14	13	15	14	13	14	15	14	16
	ES	19	10-04	38	59	06-98	20	22	26	25	31	31	37	38	30	29	28	30
	FR	-18	09-93	5	32	03-01	9	10	11	11	13	9	10	12	13	12	12	11
	IE	-7	05-03	18	45	06-98	3	12	3	-2	6	19	-1	7	6	6	4	13
	IT	-6	09-00	25	57	06-01	35	20	26	32	47	40	28	26	32	23	22	36
	CY	3	06-03	18	34	03-05	17	15	16	20	34	30	14	29	22	22	19	13
	LV	8	01-03	14	25	02-02	19	19	18	13	17	17	18	16	21	14	24	17
	LT	-7	10-02	14	30	02-03	14	29	23	7	16	17	18	19	18	21	20	29
	HU	-3	06-05	5	17	02-02	-1	-3	2	7	0	4	3	-3	5	2	5	6
	NL	-4	01-96	26	54	07-00	22	20	20	28	6	30	22	30	22	20	23	25
	AT	-1	10-01	18	34	06-98	17	17	11	12	10	17	14	12	12	12	14	15
	PL⁽ⁿ⁾	-10	03-03	4	17	08-05	4	1	9	14	14	16	15	11	12	17	14	9
	PT	-16	09-03	14	40	06-01	23	18	-4	12	4	11	14	13	0	7	12	5
	SI	22	04-03	27	32	12-04	26	32	28	23	25	30	28	27	28	27	25	22
	SK	35	03-05	51	65	06-03	49	62	45	45	35	40	41	46	43	42	38	43
	FI	-12	10-96	31	71	01-01	27	33	62	36	35	20	51	48	70	45	53	39
	SE	-4	01-03	24	66	02-01	20	25	37	18	27	34	20	32	26	25	34	31
	UK	-14	03-03	28	57	10-97	23	22	18	30	23	14	5	17	18	15	9	18
EVOLUTION OF EMPLOYMENT IN RECENT MONTHS	EU	-10	03-03	10	26	08-98	4	3	-1	2	0	1	2	2	2	3	3	2
	Euro area	-8	03-03	11	28	01-99	3	2	-3	-1	0	0	0	1	1	-1	2	1
	BE	-14	08-02	8	30	08-98	0	-3	4	0	1	5	-4	5	8	8	1	14
	CZ	-30	11-04	-11	18	11-02	-30	1	-6	-27	-20	-8	-20	-21	-16	-10	-3	-13
	DK	-2	04-03	9	21	04-00	15	15	13	13	12	15	15	16	17	18	18	18
	DE	-19	12-02	14	44	03-99	-2	-2	-6	-7	-5	-3	-4	0	-1	-1	1	1
	EE	1	06-02	9	16	09-05	2	7	8	16	5	11	13	11	11	14	16	11
	EL	-42	06-01	8	45	06-00	-3	-15	-17	-8	-11	-3	-4	0	1	4	8	-1
	ES	4	03-03	18	45	08-98	6	10	9	11	13	12	12	13	10	13	10	8
	FR	-27	06-93	4	23	12-90	6	3	3	-1	2	0	0	1	4	4	4	-6
	IE	-36	05-05	1	25	02-98	-13	-7	-12	-13	-14	-13	-36	-21	-11	-20	-10	5
	IT	-13	05-03	6	25	05-00	13	7	-11	5	1	-1	2	-9	-6	0	-7	-2
	CY	-23	06-02	-4	6	02-05	0	1	3	6	5	5	0	4	3	4	0	-1
	LV	-1	05-02	5	10	06-03	7	5	4	4	9	6	5	4	6	6	5	6
	LT	-30	11-03	-10	17	11-02	-22	16	3	5	-8	-9	2	-4	-4	-3	-1	9
	HU	-15	06-05	-6	2	07-04	-1	0	-7	-2	-11	-10	-9	-15	-7	-1	-4	-12
	NL	-8	05-03	17	66	06-98	3	3	1	-1	-1	4	4	5	6	5	5	5
	AT	-7	08-02	6	18	07-98	6	7	2	8	5	8	3	2	3	0	2	2
	PL⁽ⁿ⁾	-15	02-04	-7	3	08-05	-8	-5	-3	2	-4	2	-1	-1	2	3	-2	-3
	PT	-34	05-03	-1	28	07-98	-13	-24	-19	-18	-15	-15	-5	-5	-20	-15	-11	-11
	SI	-10	12-03	4	16	08-05	3	8	2	7	6	10	8	7	16	16	16	13
	SK	-66	12-04	-39	3	07-02	-55	-66	-37	-51	-44	-55	-48	-42	-41	-49	-56	-51
	FI	-26	04-97	29	91	11-97	9	14	1	25	22	-4	14	15	7	24	26	23
	SE	-40	04-03	3	42	01-01	-8	-3	2	-2	4	8	2	14	16	13	16	13
	UK	-22	04-03	9	27	05-00	11	14	5	18	0	4	11	4	3	16	9	5
EVOLUTION OF EMPLOYMENT EXPECTED IN THE MONTHS AHEAD	EU	-6	03-03	10	26	06-98	5	5	3	4	4	6	3	3	4	6	5	7
	Euro area	-5	04-03	8	25	04-00	3	3	1	1	2	4	1	0	3	4	4	6
	BE	-11	04-03	16	34	11-99	15	14	17	17	15	24	9	11	13	19	24	13
	CZ	-31	06-04	-19	-3	08-02	-26	-13	-22	-14	-17	-20	-17	-22	-21	-17	-14	-14
	DK	4	02-03	11	21	09-05	13	13	15	17	14	18	13	11	15	19	21	18
	DE	-13	05-03	-4	11	02-01	-1	-4	-3	-3	-1	-3	-4	-4	-2	-2	0	3
	EE	7	03-03	16	26	03-05	18	18	18	19	26	24	20	18	19	22	17	19
	EL	-33	12-00	10	47	05-99	-8	-12	-6	-14	-18	-5	-3	-3	-1	1	3	11
	ES	3	05-01	18	41	04-00	14	14	15	8	11	15	14	16	13	15	12	13
	FR	-31	06-97	1	21	06-98	4	2	0	0	5	6	1	4	6	3	5	7
	IE	-13	11-04	8	31	04-98	-13	7	-2	-8	3	-10	-5	0	7	4	5	6
	IT	-10	06-05	11	34	06-00	2	6	-3	-2	0	5	-2	-10	-3	10	1	1
	CY	-7	07-05	3	18	05-02	5	4	2	3	1	2	-5	-5	-7	-3	-1	-1
	LV	-1	05-02	8	14	09-05	9	12	10	10	11	12	13	13	12	9	14	10
	LT	-51	05-02	-7	25	10-04	1	3	16	16	7	3	4	-3	17	19	-8	2
	HU	-9	09-03	-2	5	05-04	0	-1	0	1	-2	-5	-4	-8	-3	1	-2	-4
	NL	-4	03-05	18	40	01-99	10	6	8	9	-4	10	7	9	9	10	9	9
	AT	-6	01-04	9	27	09-98	8	6	8	5	3	7	5	3	6	5	2	5
	PL⁽ⁿ⁾	-13	07-04	-7	1	08-05	-4	-8	-8	-2	-6	0	-4	-3	-4	1	-1	-2
	PT	-32	08-05	2	37	08-03	-9	-5	-10	-7	-6	-8	-16	-21	-15	-32	-17	-7
	SI	-9	08-03	9	24	09-05	10	14	16	19	18	21	20	18	23	19	24	15
	SK	-67	12-04	-44	-16	05-02	-52	-67	-41	-46	-44	-53	-43	-48	-47	-38	-36	-33
	FI	-31	11-96	23	82	07-00	1	10	-12	24	11	3	3	16	5	18	17	8
	SE	-35	11-01	11	62	09-00	0	3	8	2	11	11	11	22	12	12	21	13
	UK	-17	12-02	17	33	06-98	15	22	17	20	13	15	20	16	15	12	3	15

TABLE 4: Consumer opinion on economic and financial conditions (s.a.)^{(a)(b)}

		Since 01/1990			2004		2005											
		Min. Value	Ave. Date	Max. Value	Date	Nov.	Dec.	Jan.	Feb.	Mar.	Apr.	May	June	July	Aug.	Sep.	Oct.	
CONSUMER CONFIDENCE INDICATOR	EU	-27	03-93	-11	2 12-00	-10	-10	-10	-10	-10	-11	-12	-13	-12	-12	-12	-11	
	Euro area	-29	07-93	-12	2 05-00	-13	-13	-13	-13	-14	-13	-15	-15	-15	-15	-14	-13	
	BE	-27	08-93	-6	17 12-00	-4	-4	-6	-3	-1	-4	-11	-11	-11	-10	-14	-6	
	CZ	-36	03-98	-15	1 04-01	-10	-5	-4	-5	-2	-6	-3	-2	-2	-4	0	-1	
	DK	-11	10-90	6	17 02-95	13	14	14	16	17	14	14	14	13	13	15	16	
	DE	-28	10-93	-11	6 05-00	-17	-16	-12	-15	-18	-15	-14	-15	-17	-15	-14	-11	
	EE	-56	04-93	-23	1 10-05	-7	-11	-12	-10	-5	-8	-8	-6	-2	-4	-10	1	
	EL	-44	07-03	-30	-6 04-00	-27	-28	-32	-32	-33	-35	-31	-36	-32	-33	-35	-37	
	ES	-37	10-92	-11	6 03-00	-10	-9	-9	-10	-10	-11	-11	-12	-11	-12	-11	-11	
	FR	-34	08-93	-18	4 01-01	-13	-13	-17	-14	-14	-17	-21	-17	-16	-15	-13	-15	
	IE	-31	03-93	-4	19 01-00	2	8	7	4	7	1	-1	1	4	1	-4	-3	
	IT	-38	04-93	-13	2 06-01	-14	-16	-16	-18	-18	-16	-17	-19	-21	-21	-21	-20	
	CY	-43	07-04	-29	-13 06-01	-38	-41	-34	-36	-35	-38	-35	-39	-41	-40	-40	-35	
	LV	-45	02-93	-24	-7 09-01	-19	-18	-16	-12	-11	-14	-12	-14	-16	-14	-15	-14	
	LT	-32	05-01	-13	-1 10-04	-2	-3	-5	-3	-5	-1	-4	-3	-4	-6	-7	-5	
	LU	-4	09-05	3	14 02-02	7	8	6	2	4	3	2	-2	-1	-1	-4	-2	
	HU	-58	04-95	-29	0 08-02	-25	-23	-21	-21	-24	-28	-30	-32	-27	-26	-24	-26	
	NL	-19	07-93	4	31 03-00	-3	-8	-4	-4	-3	2	-4	-5	-4	-7	-7	-2	
	AT	-16	04-96	-2	11 07-00	-3	-3	1	-3	-2	0	-3	-3	-4	-4	-5	-3	
	PL	-40	08-01	-30	-18 04-05	-22	-19	-20	-19	-18	-18	-21	-23	-23	-22	-20	-18	
PT	-49	03-03	-23	-1 07-91	-34	-36	-35	-34	-31	-30	-31	-39	-42	-42	-41	-41		
SI	-29	06-99	-19	-9 10-04	-14	-18	-20	-13	-15	-13	-13	-18	-18	-17	-21	-22		
SK	-50	08-99	-30	-9 06-05	-16	-12	-13	-13	-13	-10	-12	-9	-12	-14	-24	-18		
FI	6	11-01	15	23 02-00	14	16	13	16	17	14	14	10	12	15	13	16		
SE	-10	09-96	7	25 03-00	7	10	8	8	7	6	5	3	3	4	6	8		
UK	-28	10-92	-8	7 10-97	0	0	0	0	3	0	-3	-3	-1	-2	-3	-4		
FINANCIAL SITUATION OF HOUSEHOLDS OVER NEXT 12 MONTHS	EU	-10	12-93	-1	5 04-01	-1	-1	0	0	0	0	-1	-1	-1	-1	-2	-2	
	Euro area	-11	07-93	-2	5 03-00	-4	-3	-3	-2	-3	-3	-4	-4	-4	-4	-5	-5	
	BE	-9	12-93	2	13 08-00	4	6	5	7	6	4	3	3	3	3	1	4	
	CZ	-32	02-98	-10	2 05-02	-6	-4	-4	-3	-3	-6	-2	-3	0	-2	-4	-1	
	DK	2	12-90	12	39 10-00	14	14	15	15	17	15	15	15	15	17	14	15	
	DE	-15	02-94	-5	4 05-00	-6	-5	-2	-3	-4	-4	-6	-6	-7	-6	-8	-5	
	Component of the consumer confidence indicator	EE	-38	04-93	-10	11 01-03	3	-2	-3	-2	3	1	2	4	9	5	-6	9
		EL	-31	08-92	-15	10 04-00	-14	-13	-17	-17	-19	-20	-17	-22	-18	-20	-24	-24
		ES	-16	10-92	1	10 10-99	-1	2	0	-1	-1	-2	-1	-2	0	0	-1	-1
		FR	-12	12-95	-1	6 01-01	-2	-1	-3	-2	-1	-2	-3	-2	-2	-1	0	-5
		IE	-13	02-93	1	16 01-00	0	4	4	2	4	-1	-1	1	1	-1	-5	-2
		IT	-15	04-93	-1	7 07-01	-3	-3	-4	-4	-4	-2	-2	-3	-4	-4	-4	-4
		CY	-35	06-04	-15	0 06-01	-26	-28	-24	-27	-25	-30	-27	-25	-32	-31	-32	-32
		LV	-29	09-93	-8	9 08-02	-2	-3	2	3	6	4	6	2	3	2	-1	2
		LT	-10	10-01	0	7 06-05	6	5	2	3	4	6	2	7	5	4	3	3
		LU	0	10-05	6	12 06-02	7	6	6	4	9	3	7	3	3	3	1	0
		HU	-63	04-95	-22	16 08-02	-12	-12	-7	-7	-10	-13	-16	-18	-11	-9	-9	-11
		NL	-11	12-04	4	16 12-99	-5	-11	-5	-5	-6	-2	-5	-7	-3	-10	-10	-8
		AT	-18	04-96	-4	4 04-99	-9	-5	-1	-1	-2	-2	-3	-3	-4	-4	-8	-3
		PL	-20	08-01	-11	-3 04-05	-6	-3	-5	-3	-3	-3	-5	-8	-8	-6	-5	-6
PT		-26	03-03	-8	11 01-92	-16	-17	-16	-18	-15	-15	-14	-21	-23	-23	-23	-22	
SI		-30	06-99	-11	-2 11-96	-7	-4	-7	-4	-6	-4	-4	-10	-9	-6	-11	-12	
SK		-44	08-99	-24	-7 06-05	-12	-10	-11	-8	-10	-8	-9	-7	-9	-13	-22	-16	
FI		-8	04-93	6	13 10-04	12	12	10	13	11	11	11	10	12	12	9	11	
SE		-13	09-96	7	18 07-02	13	16	15	12	16	12	14	14	13	13	13	14	
UK		-23	03-90	2	16 09-02	10	8	10	10	11	10	10	9	10	11	10	8	
GENERAL ECONOMIC SITUATION OVER NEXT 12 MONTHS	EU	-32	03-93	-12	1 04-00	-12	-12	-12	-11	-10	-12	-15	-15	-17	-15	-14	-14	
	Euro area	-35	03-93	-13	4 04-00	-14	-14	-13	-13	-13	-14	-17	-17	-19	-17	-16	-15	
	BE	-46	07-93	-11	20 06-00	-3	-2	-5	-1	2	-5	-16	-18	-18	-13	-22	-8	
	CZ	-40	09-97	-11	8 10-95	-10	-2	2	2	2	0	1	3	3	3	8	5	
	DK	-23	02-99	-2	23 07-01	7	6	6	10	13	5	6	6	2	5	6	8	
	DE	-41	03-93	-16	6 02-99	-22	-20	-16	-19	-23	-21	-20	-21	-24	-20	-19	-14	
	Component of the consumer confidence indicator	EE	-38	04-93	-4	25 03-03	10	6	8	11	11	7	8	5	9	8	-4	15
		EL	-37	12-03	-16	17 01-00	-16	-15	-20	-21	-19	-24	-20	-29	-21	-25	-24	-31
		ES	-38	10-92	-5	11 08-97	-6	-2	-2	-4	-5	-7	-9	-9	-7	-8	-7	-7
		FR	-37	01-91	-17	5 01-01	-15	-14	-18	-15	-10	-17	-26	-15	-22	-17	-11	-22
		IE	-33	12-02	-2	22 01-00	2	7	6	0	6	-3	-3	-5	-1	-7	-15	-10
		IT	-40	04-93	-9	13 02-95	-6	-10	-11	-12	-12	-10	-14	-20	-20	-19	-20	-17
		CY	-45	06-04	-23	-7 05-01	-34	-41	-32	-31	-33	-38	-35	-31	-35	-34	-32	-24
		LV	-27	06-95	-7	11 05-03	-5	-4	0	6	9	3	5	0	-3	-2	-3	-4
		LT	-18	05-01	2	16 10-04	13	12	9	10	8	11	9	8	6	1	-4	-2
		LU	-30	09-05	-7	7 02-02	0	-1	1	-5	0	-4	-7	-20	-16	-20	-30	-26
		HU	-53	04-95	-14	19 08-02	-10	-8	-5	-5	-8	-13	-16	-18	-11	-7	-8	-8
		NL	-42	03-93	-8	26 03-00	-9	-16	-13	-6	-4	4	-6	-11	-6	-14	-12	-6
		AT	-26	04-96	-6	8 11-99	-7	-8	-2	-6	-4	-4	-8	-7	-10	-10	-13	-11
		PL	-35	08-01	-21	-3 10-05	-16	-10	-10	-7	-7	-5	-11	-12	-8	-8	-8	-3
PT		-52	03-03	-16	12 01-92	-27	-30	-29	-24	-18	-17	-18	-35	-38	-39	-38	-37	
SI		-21	02-04	-9	7 10-04	-2	-3	-5	0	-4	4	1	-5	-7	-6	-11	-11	
SK		-51	09-99	-30	-2 06-05	-12	-6	-8	-6	-3	-3	-6	-2	-6	-9	-24	-18	
FI		-24	04-91	6	28 01-95	4	6	3	5	8	4	0	-5	-1	3	-2	3	
SE		-30	09-96	0	20 03-00	3	3	0	1	-1	-3	-5	-6	-7	-5	-4	-4	
UK		-33	03-90	-9	14 06-97	-9	-7	-11	-5	-2	-6	-10	-13	-11	-11	-13	-15	

TABLE 4 (continued): Consumer opinion on economic and financial conditions (s.a.)^(a)

		Since 01/1990																			
		Min.			Ave.			Max.			2004				2005						
		Value	Date		Value	Date		Value	Date		Nov.	Dec.	Jan.	Feb.	Mar.	Apr.	May	June	July	Aug.	Sep.
SAVINGS	EU	-15	08-93	-4	4	04-01	-2	-3	-3	-4	-4	-4	-4	-4	-4	-3	-4	-4	-4	-4	-5
OVER NEXT	Euro area	-14	08-93	-5	4	03-01	-5	-6	-7	-8	-9	-8	-7	-7	-7	-7	-7	-9	-8	-9	-9
12 MONTHS	BE	-2	12-93	13	31	06-98	13	17	15	16	16	17	13	14	12	11	6	10			
	CZ	-16	03-98	-4	11	08-03	2	2	6	2	5	0	-1	4	0	1	10	3			
Component of the consumer confidence indicator	DK	-3	01-90	23	39	04-05	35	36	37	37	38	39	38	39	39	39	32	36	34		
	DE	-5	03-03	7	23	08-90	3	4	5	5	0	2	1	-1	-2	1	-1	0			
	EE	-69	10-93	-50	-11	08-01	-36	-39	-37	-36	-28	-32	-33	-29	-24	-27	-31	-23			
	EL	-57	07-95	-44	-23	01-00	-38	-44	-47	-47	-45	-48	-48	-47	-47	-45	-48	-47			
	ES	-34	01-90	-19	0	07-00	-24	-23	-25	-24	-20	-23	-22	-22	-25	-25	-26	-27	-23		
	FR	-36	03-96	-23	-7	04-04	-9	-12	-16	-15	-14	-18	-15	-14	-13	-12	-11	-15			
	IE	-32	03-93	-1	28	02-02	15	19	21	20	21	19	17	20	19	21	18	13			
	IT	-39	10-04	-16	2	03-91	-29	-32	-30	-35	-36	-29	-24	-21	-29	-32	-29	-28			
	CY	-55	06-02	-41	-13	06-01	-46	-45	-38	-43	-38	-42	-33	-49	-46	-48	-42	-44			
	LV	-90	03-96	-56	13	01-94	-54	-53	-52	-50	-50	-52	-48	-50	-50	-49	-52	-49			
	LT	-55	05-01	-46	-35	04-05	-42	-39	-42	-40	-43	-35	-42	-42	-38	-42	-44	-38			
	LU	40	05-05	48	58	10-05	53	52	46	46	44	46	40	53	46	48	48	58			
	HU	-70	11-95	-53	-19	01-00	-47	-45	-45	-45	-44	-47	-48	-50	-44	-46	-45	-47			
	NL	17	09-05	38	55	10-99	28	26	32	24	22	25	24	29	21	22	17	18			
	AT	-11	11-00	32	55	03-02	35	31	33	27	29	29	29	29	33	30	32	36			
	PL	-67	09-03	-51	-22	09-01	-50	-52	-52	-50	-49	-50	-49	-48	-53	-53	-51	-50			
	PT	-55	10-05	-34	-14	01-92	-50	-50	-50	-51	-51	-49	-48	-51	-51	-54	-53	-55			
	SI	-52	06-99	-28	-15	06-03	-25	-26	-25	-25	-18	-22	-20	-25	-21	-22	-17	-21			
	SK	-70	08-01	-42	-29	08-00	-38	-35	-36	-37	-41	-34	-35	-32	-37	-31	-40	-38			
FI	19	01-96	38	53	05-04	52	52	46	50	51	49	53	50	49	51	51	51				
SE	11	06-98	29	46	06-00	30	31	28	30	33	29	26	29	31	29	31	35				
UK	-26	10-92	-5	17	03-05	17	14	15	14	17	17	12	14	16	17	16	15				
UNEMPLOYMENT	EU	-2	12-00	26	56	03-93	26	26	25	26	27	26	28	30	27	27	26	23			
OVER NEXT	Euro area	-3	01-01	28	60	08-93	29	29	28	30	31	29	31	33	30	29	28	23			
12 MONTHS	BE	-19	12-00	28	63	10-93	31	35	37	33	30	32	43	44	42	41	31				
	CZ	4	05-01	35	64	03-99	24	17	21	19	14	18	9	13	9	17	11				
Component of the consumer confidence indicator	DK	-19	11-97	8	38	12-92	5	2	2	-2	-1	3	3	5	3	2	-5				
	DE	-3	01-01	30	58	10-93	42	41	34	43	44	37	31	35	34	33	30	26			
	EE	-2	10-05	34	80	04-93	7	8	15	14	6	6	8	5	0	2	1	-2			
	EL	24	04-90	44	62	12-98	42	40	43	43	47	47	40	46	42	41	43	44			
	ES	-8	03-00	18	67	01-93	9	12	8	10	12	11	13	13	12	14	10	12			
	FR	-14	01-01	31	64	03-03	25	26	32	25	32	32	40	38	27	29	32	17			
	IE	-29	12-99	15	58	04-92	8	-1	4	7	4	11	17	12	4	8	15	14			
	IT	-2	06-01	27	70	04-93	18	20	19	21	22	22	26	32	32	31	29	28			
	CY	26	05-01	37	53	09-05	44	48	41	42	46	43	46	50	50	49	53	39			
	LV	5	10-05	27	54	01-93	17	14	13	6	8	12	9	8	12	6	6	5			
	LT	-17	10-05	9	46	05-01	-15	-11	-12	-14	-11	-13	-15	-17	-13	-13	-15	-17			
	LU	14	02-02	34	45	06-03	31	27	27	37	36	33	31	42	36	36	37	38			
	HU	-3	07-98	28	59	02-93	30	27	26	27	33	36	40	44	41	40	35	37			
	NL	-35	07-98	18	77	03-93	26	32	28	28	25	19	29	33	29	26	23	11			
	AT	-9	11-00	27	49	12-96	31	28	27	32	29	24	30	29	33	33	32	34			
	PL	12	01-05	37	64	05-01	18	12	12	15	15	14	21	24	24	20	16	13			
	PT	-10	08-97	33	73	10-93	46	46	46	43	40	40	42	48	55	53	51	51			
	SI	7	09-01	26	44	09-05	21	38	40	24	31	28	29	31	33	34	44	43			
	SK	-4	01-05	26	68	08-99	4	-2	-4	-1	-1	-3	-3	-4	-3	2	8	-1			
FI	-31	01-95	-1	42	07-91	10	5	7	3	3	7	9	14	13	7	6	0				
SE	-26	03-00	7	39	11-01	17	11	10	10	18	13	17	24	24	21	14	13				
UK	-11	04-98	21	53	02-91	18	15	16	17	16	21	23	22	21	24	24	25				
FINANCIAL	EU	-19	01-94	-10	-2	05-00	-11	-11	-11	-11	-11	-11	-12	-12	-13	-12	-12				
SITUATION	Euro area	-20	02-03	-11	-1	05-90	-14	-14	-14	-13	-14	-14	-15	-15	-16	-15	-15				
OF HOUSEHOLDS	BE	-16	12-93	-6	4	11-00	-3	-4	-5	-4	-4	-5	-8	-4	-7	-7	-6				
OVER LAST	CZ	-30	02-98	-15	-5	05-96	-16	-13	-13	-10	-10	-15	-11	-8	-10	-11	-7				
12 MONTHS	DK	-5	04-01	6	16	02-05	12	14	13	16	16	14	10	10	12	14	14				
	DE	-31	12-02	-12	4	05-90	-12	-12	-11	-11	-11	-12	-12	-13	-15	-13	-13				
	EE	-54	04-93	-17	7	10-05	-2	-4	-1	-1	3	0	-1	1	6	5	7				
	EL	-43	01-93	-28	-6	04-00	-27	-30	-30	-29	-28	-28	-27	-34	-31	-31	-29	-32			
	ES	-28	01-94	-8	4	04-00	-8	-7	-8	-9	-11	-10	-9	-9	-10	-10	-10				
	FR	-18	06-96	-10	-2	01-01	-10	-11	-12	-11	-13	-12	-14	-14	-14	-13	-12	-16			
	IE	-25	02-93	-7	11	04-00	-6	-2	-1	-2	0	-6	-3	-5	-4	-5	-9				
	IT	-30	02-04	-14	-1	05-90	-25	-25	-24	-23	-23	-23	-26	-27	-27	-25	-24				
	CY	-36	10-05	-17	-5	07-03	-26	-26	-23	-24	-25	-29	-29	-27	-31	-29	-36				
	LV	-57	01-93	-22	-3	05-05	-11	-13	-8	-6	-5	-7	-3	-8	-8	-6	-6				
	LT	-29	06-01	-13	2	07-05	-4	-4	-4	-2	-3	-1	-1	0	2	-1	-1				
	LU	-3	10-05	1	8	01-02	2	3	2	0	-1	-1	4	1	0	-1	-3				
	HU	-65	11-95	-36	0	08-02	-24	-26	-25	-26	-22	-26	-29	-30	-25	-25	-24				
	NL	-25	03-05	1	17	02-00	-20	-21	-21	-23											

TABLE 4 (continued): Consumer opinion on economic and financial conditions (s.a.)^(a)

		Since 01/1990			2004		2005											
		Min. Value	Ave. Date	Max. Value	Date	Nov.	Dec.	Jan.	Feb.	Mar.	Apr.	May	June	July	Aug.	Sep.	Oct.	
GENERAL ECONOMIC SITUATION OVER LAST 12 MONTHS	EU	-55	03-93	-27	-4	05-00	-32	-30	-29	-28	-29	-30	-31	-34	-35	-33	-33	-34
	Euro area	-58	07-93	-29	-2	05-00	-36	-34	-34	-33	-34	-36	-37	-40	-41	-39	-38	-39
	BE	-61	08-93	-25	22	12-00	-19	-19	-20	-14	-11	-17	-29	-37	-36	-32	-41	-30
	CZ	-54	12-97	-21	3	10-95	-19	-17	-11	-11	-7	-10	-7	-3	-5	-4	-1	-2
	DK	-25	04-93	0	22	10-05	10	15	14	16	19	16	15	15	18	20	19	22
	DE	-60	05-03	-27	12	01-90	-41	-37	-33	-34	-39	-40	-37	-42	-42	-39	-40	-38
	EE	-72	10-92	-11	20	01-03	8	7	11	7	12	5	8	8	11	7	6	12
	EL	-50	05-90	-31	6	05-00	-30	-31	-33	-33	-30	-30	-28	-38	-32	-37	-34	-38
	ES	-61	08-93	-16	13	03-00	-16	-12	-13	-15	-16	-18	-16	-18	-16	-20	-21	-22
	FR	-57	10-96	-36	-1	01-01	-36	-36	-39	-37	-37	-40	-42	-38	-46	-42	-37	-47
	IE	-59	03-93	-5	42	08-99	-2	5	7	4	7	-1	-2	-3	2	-4	-12	-9
	IT	-74	04-93	-38	-8	05-90	-50	-48	-48	-46	-47	-51	-55	-61	-60	-54	-55	-54
	CY	-41	07-04	-26	-13	01-02	-34	-39	-32	-31	-32	-38	-37	-30	-31	-31	-32	-30
	LV	-59	01-93	-24	3	12-03	-13	-15	-11	-6	-6	-11	-6	-13	-14	-16	-16	-17
	LT	-41	05-01	-10	6	10-04	4	4	3	4	3	5	2	4	4	-1	-6	-3
	LU	-36	06-03	-23	-2	01-02	-14	-16	-11	-20	-16	-20	-15	-23	-23	-26	-28	-28
	HU	-71	04-95	-32	6	09-02	-26	-26	-22	-24	-22	-28	-32	-33	-25	-23	-21	-23
	NL	-73	03-03	-13	45	03-00	-41	-45	-44	-40	-35	-30	-32	-37	-39	-41	-41	-32
	AT	-50	02-97	-24	8	07-00	-22	-28	-22	-28	-25	-22	-24	-26	-29	-31	-31	-30
	PL	-55	09-01	-40	-14	08-05	-30	-24	-22	-21	-20	-17	-20	-22	-19	-14	-18	-15
	PT	-60	03-03	-25	13	10-91	-45	-50	-51	-51	-49	-46	-44	-49	-54	-55	-55	-55
	SI	-39	09-98	-28	-14	04-05	-25	-29	-26	-19	-22	-14	-16	-22	-24	-22	-31	-29
	SK	-69	10-99	-41	-10	06-05	-27	-19	-22	-16	-11	-12	-13	-10	-13	-13	-21	-23
	FI	-65	01-92	-4	30	08-98	5	6	4	7	7	2	-1	-6	-4	2	-2	4
	SE	-25	04-03	-6	25	03-00	-1	-2	1	-2	-4	-6	-6	-9	-10	-6	-7	-6
	UK	-67	11-92	-25	5	10-97	-21	-18	-17	-14	-13	-13	-14	-19	-17	-19	-23	-22
SAVINGS AT PRESENT ^(c)	EU	:	:	:	:	:	:	:	:	:	:	:	:	:	:	:	:	:
	Euro area	:	:	:	:	:	:	:	:	:	:	:	:	:	:	:	:	:
	BE	-45	12-03	43	70	02-01	-26	-25	-27	-24	-29	-28	-10	-16	-20	-28	-32	-30
	CZ	-35	01-03	-15	15	03-01	-20	-21	-19	-19	-18	-20	-20	-21	-16	-18	-12	-9
	DK	51	01-90	65	78	07-92	75	74	73	68	71	69	73	73	69	67	69	68
	DE	29	11-92	45	61	09-02	46	46	45	45	42	44	42	45	43	45	45	46
	EE	-58	09-96	-37	-14	08-01	-24	-29	-29	-27	-23	-23	-27	-23	-23	-24	-26	-20
	EL	-70	10-05	-46	-18	01-00	-54	-58	-61	-64	-61	-60	-60	-62	-63	-59	-64	-70
	ES	-33	12-03	28	59	08-96	-20	-27	-20	-18	-19	-20	-21	-24	-21	-25	-27	-26
	FR	7	10-05	42	61	06-95	8	10	15	14	15	17	12	13	9	11	13	7
	IE	-2	03-93	21	56	12-01	27	39	38	35	44	38	34	37	37	39	31	32
	IT	26	06-04	45	59	06-96	38	40	40	46	47	46	46	56	54	51	54	54
	CY	-37	07-04	-13	9	06-01	-20	-10	-7	-2	9	-7	-4	-11	-16	-23	-7	-11
	LV	-78	12-95	-58	-28	09-01	-52	-54	-49	-50	-49	-53	-53	-55	-53	-50	-56	-56
	LT	-50	10-05	-39	-27	05-02	-39	-36	-37	-41	-40	-40	-44	-43	-46	-48	-49	-50
	LU	45	04-03	54	63	01-03	51	55	54	59	59	57	50	58	57	58	55	57
	HU	-83	11-95	-65	-28	12-00	-53	-58	-54	-51	-54	-52	-54	-57	-52	-55	-53	-54
	NL	47	06-91	61	70	09-96	68	70	64	61	62	63	59	64	62	62	63	63
	AT	17	12-96	42	64	09-02	55	56	57	52	51	52	53	51	54	54	55	56
	PL	-49	09-01	-37	-29	06-01	-34	-31	-38	-35	-30	-34	-33	-34	-34	-38	-32	-33
	PT	-64	10-05	-40	-13	01-92	-62	-63	-61	-63	-62	-63	-60	-63	-64	-63	-64	-64
	SI	-25	09-97	-12	-1	08-04	-2	-4	-7	-9	-5	-3	-1	-7	-5	-2	-3	-3
	SK	-55	10-04	-47	-36	03-00	-49	-49	-50	-50	-46	-47	-48	-47	-49	-50	-51	-54
	FI	-23	04-94	4	22	10-92	14	16	14	15	16	18	13	14	13	14	12	18
	SE	-9	09-01	6	20	01-00	1	3	-2	-1	-1	1	2	3	2	5	4	8
	UK	-16	03-03	12	36	05-90	23	22	25	24	28	28	25	25	26	22	26	26
MAJOR PURCHASES OVER NEXT 12 MONTHS	EU	-21	07-93	-16	-10	03-00	-18	-17	-17	-17	-17	-16	-18	-17	-17	-17	-18	-17
	Euro area	-21	07-93	-17	-12	03-00	-20	-19	-18	-18	-18	-18	-19	-18	-18	-18	-19	-19
	BE	-29	10-96	-16	-6	10-03	-16	-17	-14	-14	-14	-16	-14	-14	-14	-14	-13	-13
	CZ	-36	01-01	-24	-7	05-02	-15	-10	-14	-11	-17	-8	-16	-9	-10	-11	-14	-12
	DK	-14	01-93	-6	1	11-04	1	-2	0	0	0	1	-2	-4	-1	0	1	
	DE	-39	02-03	-26	-14	01-90	-33	-30	-30	-30	-29	-31	-30	-29	-30	-28	-29	-29
	EE	-64	10-92	-25	-3	10-05	-13	-9	-10	-12	-15	-11	-16	-14	-8	-9	-11	-3
	EL	-60	10-05	-23	5	06-03	-23	-26	-23	-21	-21	-21	-22	-18	-32	-32	-49	-60
	ES	-48	11-93	-24	-7	11-00	-26	-25	-23	-26	-23	-20	-23	-20	-22	-24	-24	-24
	FR	-6	04-04	0	1	09-99	-5	-5	-3	-4	-5	-4	-5	-5	-5	-5	-5	-5
	IE	-20	05-93	-9	2	12-00	-4	-6	-6	-4	-3	-6	-3	-4	-5	-6	-7	-5
	IT	-23	10-92	-17	-9	04-05	-13	-12	-13	-9	-11	-9	-14	-15	-12	-13	-14	-12
	CY	-5	03-04	12	39	03-03	17	17	7	7	-4	2	10	7	4	-3	5	-3
	LV	-84	03-96	-41	17	09-05	-6	0	3	-1	6	1	5	4	6	14	17	16
	LT	-18	12-02	-10	-2	11-04	-2	-5	-6	-9	-5	-6	-4	-3	-3	-2	-3	-2
	LU	-19	06-05	-13	-6	01-02	-14	-16	-11	-12	-12	-12	-18	-19	-11	-13	-17	-11
	HU	-69	06-95	-37	-8	08-02	-22	-26	-23	-22	-22	-24	-29	-28	-25	-24	-22	-24
	NL	-25	03-03	-14	-4	11-98	-18	-18	-17	-17	-20	-17	-22	-17	-19	-16	-19	-17
	AT	-26	11-04	-17	-4	11-00	-26	-21	-22	-22	-19	-21	-21	-16	-21	-18	-26	-23
	PL	-25	09-01	-8	1	09-04	-1	-5	-4	-6	-7	-7	-7	-8	-6	-8	-7	-6
	PT	-23	11-95	-8	14	06-90	-12	-11	-9	-14	-15	-13	-16	-14	-15	-16	-17	-16
	SI	-18	03-02	-5	4	04-00	-9	-4	-2	-2	-4	-2	-4	-5	-11	-7	-7	-1
	SK	-41	08-01	-29	-20	08-02	-26	-22	-25	-26	-23	-21</						

TABLE 4 (continued) : Consumer opinion on economic and financial conditions (s.a.)^(a)

		Since 01/1990			2004		2005											
		Min.		Ave.	Max.		Nov.	Dec.	Jan.	Feb.	Mar.	Apr.	May	June	July	Aug.	Sep.	Oct.
		Value	Date	Value	Date	Value	Date	Value	Date	Value	Date	Value	Date	Value	Date	Value	Date	Value
MAJOR PURCHASES AT PRESENT	EU	-22	07-93	-11	6	01-00	-15	-15	-13	-12	-12	-13	-13	-14	-14	-13	-14	-14
	Euro area	-28	03-03	-15	6	03-99	-21	-22	-20	-19	-18	-20	-18	-21	-21	-20	-21	-20
	BE	-40	06-97	-4	26	12-00	17	20	18	19	19	20	16	11	12	19	4	15
	CZ	-33	05-95	0	34	07-03	4	9	9	14	13	24	20	25	18	21	22	20
	DK	-27	01-93	-7	10	09-97	-3	0	0	-5	1	-7	-10	-11	-5	-2	-3	-2
	DE	-31	11-02	-11	6	04-99	-20	-19	-15	-14	-13	-18	-14	-17	-14	-12	-15	-12
	EE	0	04-01	14	48	04-04	31	39	36	37	36	38	38	42	39	37	33	40
	EL	-68	10-05	-36	-10	01-01	-45	-49	-46	-45	-37	-44	-45	-59	-50	-51	-58	-68
	ES	-64	06-93	-17	26	11-99	-27	-30	-20	-22	-19	-22	-22	-23	-23	-26	-26	-22
	FR	-39	12-95	-14	14	07-00	-11	-13	-14	-9	-11	-9	-12	-15	-19	-16	-13	-15
	IE	-22	04-92	14	40	09-97	20	19	26	21	28	22	26	24	19	19	17	15
	IT	-64	11-96	-33	-2	05-90	-48	-51	-49	-53	-51	-53	-44	-41	-47	-50	-45	-42
	CY	-19	10-01	0	24	11-04	24	8	3	-4	-9	-5	1	1	-3	-9	-10	-9
	LV	-81	06-96	-42	19	10-05	-2	-4	5	1	-1	2	2	2	1	11	9	19
	LT	-10	05-01	20	43	10-05	33	35	30	33	39	34	36	39	38	37	40	43
	LU	-17	06-04	-9	0	06-05	-7	-3	-2	-7	-7	-8	-4	0	-9	-10	-10	-2
	HU	-87	06-96	-56	-9	10-02	-23	-24	-17	-16	-17	-15	-21	-18	-14	-17	-14	-17
	NL	-39	04-03	6	54	02-00	-30	-33	-24	-28	-26	-26	-26	-33	-29	-29	-32	-34
	AT	-14	07-02	7	29	08-99	-6	-3	-6	-7	-6	-5	-3	-2	-7	-5	-10	-9
	PL	-27	11-01	-10	3	11-03	-8	-7	-2	-7	-4	-2	-2	-1	-3	-1	-2	-7
	PT	-64	09-05	-33	-2	01-92	-58	-58	-56	-58	-57	-58	-57	-60	-58	-62	-64	-61
	SI	-50	04-97	-22	10	05-99	-8	-11	-6	-9	-8	-5	-1	-1	3	-7	-8	-7
	SK	-25	02-04	-10	4	08-99	-14	-15	-13	-13	-15	-15	-10	-11	-10	-8	-14	-15
	FI	-27	04-90	17	39	08-03	25	21	27	27	26	24	26	24	26	26	22	26
	SE	2	11-95	18	36	08-05	24	26	28	29	30	29	27	27	28	36	31	35
	UK	-22	05-90	8	28	11-02	7	13	8	14	12	12	5	6	9	7	9	4
PRICE TRENDS OVER NEXT 12 MONTHS	EU	6	06-03	23	49	01-91	10	7	8	9	9	10	11	11	16	14	16	16
	Euro area	3	04-04	23	51	01-91	8	6	8	9	9	10	12	13	17	14	15	17
	BE	-4	09-02	20	46	10-01	18	12	13	14	15	20	17	18	17	17	23	18
	CZ	11	05-05	45	72	03-98	36	29	17	15	18	14	11	15	24	25	25	16
	DK	-29	08-93	-11	28	08-02	-7	-2	-8	-19	-15	-9	-14	-14	-8	-7	6	-9
	DE	5	12-04	32	58	03-91	7	5	8	8	9	9	9	11	19	14	18	16
	EE	23	04-93	49	88	05-04	47	56	56	53	51	56	51	55	57	60	75	52
	EL	0	03-04	38	60	05-90	24	15	17	18	19	17	17	36	33	36	38	38
	ES	-4	11-98	14	36	01-02	18	19	21	16	18	23	28	27	27	30	30	31
	FR	-13	08-97	11	54	01-91	12	8	10	15	13	11	17	15	20	15	10	20
	IE	6	01-94	22	42	10-00	22	11	20	20	15	21	24	23	27	30	36	28
	IT	-23	12-04	21	62	02-91	-20	-23	-17	-12	-12	-9	-7	-13	-9	-13	-8	-3
	CY	28	09-03	47	68	09-02	42	47	39	37	36	45	43	38	47	47	47	28
	LV	16	03-00	33	70	03-04	45	47	41	41	39	45	46	52	50	49	50	53
	LT	14	02-03	43	75	05-04	57	57	54	52	51	48	56	55	62	64	65	60
	LU	3	06-03	14	26	03-03	20	20	11	16	16	15	19	20	19	21	25	23
	HU	34	07-98	50	65	05-95	50	51	49	46	46	49	47	50	49	46	47	49
	NL	-28	12-02	24	60	01-91	10	14	9	12	16	4	8	12	13	16	18	14
	AT	-19	12-95	14	41	09-01	31	21	26	23	21	26	26	29	31	29	35	29
	PL	7	04-05	32	54	04-04	29	26	23	16	16	7	19	21	24	25	32	28
	PT	-9	08-97	33	56	03-03	37	38	36	36	37	36	32	50	48	47	47	48
	SI	16	01-05	42	62	04-00	24	22	16	20	19	19	17	28	31	29	30	31
	SK	20	05-05	50	78	11-02	29	28	27	28	23	26	20	21	21	32	49	41
	FI	-21	12-95	11	40	09-01	13	13	20	19	21	24	20	24	25	26	29	26
	SE	-14	03-05	12	34	04-03	15	6	8	9	-14	3	0	4	8	13	5	10
	UK	5	03-05	26	57	09-90	14	10	5	6	5	7	6	7	11	9	16	11
PRICE TRENDS OVER LAST 12 MONTHS	EU	-5	03-99	23	46	01-03	30	29	28	29	28	29	27	27	28	27	30	30
	Euro area	-4	01-99	27	62	01-03	38	37	37	38	38	39	37	36	38	37	40	40
	BE	-1	06-98	34	56	09-05	54	52	54	55	53	56	54	52	53	53	56	56
	CZ	-33	08-03	24	63	03-98	-11	-13	-15	-17	-16	-17	-22	-16	-13	-15	-13	-9
	DK	-51	09-93	-25	-1	02-90	-33	-29	-30	-35	-33	-28	-28	-29	-30	-24	-21	-24
	DE	-3	03-99	31	74	08-02	25	23	20	23	22	25	20	21	25	25	32	31
	EE	-1	04-03	34	58	09-05	52	51	52	48	52	52	53	50	49	52	58	57
	EL	5	06-99	41	76	08-03	69	68	67	67	66	61	55	64	66	64	69	70
	ES	-5	06-97	30	65	03-03	54	52	51	52	53	52	52	52	52	53	53	51
	FR	-23	01-99	14	54	01-04	45	46	47	49	51	49	50	50	48	46	44	45
	IE	-3	07-97	30	66	12-02	51	40	45	42	40	42	38	36	37	44	45	45
	IT	0	05-97	36	70	11-03	45	43	45	43	41	43	46	42	45	37	37	41
	CY	21	08-01	41	62	02-04	54	61	51	47	41	51	50	46	42	50	60	50
	LV	-31	09-96	24	64	10-05	50	48	51	50	53	55	62	62	58	60	63	64
	LT	-17	10-03	10	40	09-05	27	28	24	26	24	25	32	26	31	35	40	37
	LU	21	01-02	39	46	01-04	38	39	41	40	42	45	38	44	38	40	43	44
	HU	9	12-02	41	71	06-95	26	25	19	20	20	23	22	25	20	18	19	21
	NL	-3	04-90	28	89	12-02	27	33	34	33	31	33	30	20	24	27	30	27
	AT	-48	02-96	6	46	01-03	42	36	39	35	39	42	40	38	40	36	40	38
	PL	-4	05-03	19	45	10-04	43	39	37	33	31	24	29	29	24	27	29	31
	PT	-6	08-97	38	61	10-90	43	46	43	42	41	42	40	42	47	48	49	46
	SI	14	01-05	42														

TABLE 4b: Quarterly survey of consumers

Intention to buy a car within the next 12 months (s.a.)^{(a)(b)}

	Since 01/1990					2004				2005			
	Min.		Ave.	Max.		I	II	III	IV	I	II	III	IV
	Value	Date	Value	Date									
EU	-73	II-04	-56.1	-47	II-00	-73	-73	-71	-70	-73	-71	-70	-71
Euro area	-75	I-05	-57.4	-49	I-00	-75	-74	-73	-73	-75	-72	-72	-73
BE	-81	I-05	-57	-45	II-95	-78	-80	-80	-79	-81	-79	-74	-79
CZ	-80	II-05	-73	-67	I-03	-79	-78	-77	-77	-74	-80	-70	-73
DK	-79	I-90	-64	-43	I-97	-76	-68	-69	-71	-75	-72	-67	-73
DE	-78	II-04	-43	-28	II-90	-76	-78	-74	-75	-77	-72	-71	-70
EE	-86	IV-04	-71	-53	II-03	-79	-81	-82	-86	-83	-85	-77	-75
EL	-88	III-93	-66	-38	II-00	-67	-70	-70	-67	-68	-65	-68	-74
ES	-82	I-02	-68	-25	III-99	-82	-76	-76	-73	-78	-74	-76	-75
FR	-83	II-97	-77	-70	II-90	-77	-79	-77	-72	-76	-74	-75	-77
IE	-60	III-93	-40	-21	IV-99	-38	-36	-31	-27	-24	-24	-27	-30
IT	-87	I-05	-62	-47	II-90	-82	-74	-80	-82	-87	-81	-80	-84
CY	-66	I-03	-54	-45	I-04	-45	-51	-50	-53	-53	-52	-55	-51
LV	-84	I-00	-69	-11	I-02	-61	-53	-53	-52	-64	-59	-56	-57
LT	-82	I-05	-74	-65	III-01	-76	-76	-77	-77	-82	-76	-75	-77
LU	-77	IV-05	-46	-23	III-02	-63	-62	-54	-61	-58	-56	-57	-77
HU	-87	II-04	-70	-33	I-00	-86	-87	-85	-83	-81	-85	-82	-81
NL	-59	IV-05	-44	-37	IV-99	-49	-51	-48	-48	-51	-52	-54	-59
AT	-80	I-04	-49	44	I-01	-80	-60	-61	-60	-63	-62	-64	-61
PL	-77	III-03	-75	-72	IV-01	-73	-73	-73	-75	-75	-75	-77	-74
PT	-87	III-05	-67	-56	III-98	-83	-84	-81	-81	-80	-83	-87	-86
SI	-77	I-04	-55	-44	I-01	-77	-72	-67	-69	-70	-69	-63	-68
SK	-85	II-04	-80	-75	IV-02	-82	-85	-84	-85	-82	-80	-83	-84
FI	-62	IV-04	-45	-31	IV-02	-57	-57	-57	-62	-58	-59	-59	-61
SE	-58	I-04	-40	-27	I-00	-58	-57	-52	-54	-56	-58	-52	-55
UK	-71	III-93	-49	-8	II-00	-62	-67	-63	-60	-61	-63	-60	-59

Intention to purchase or build a home within the next 12 months (s.a.)^{(a)(b)}

	Since 01/1990					2004				2005			
	Min.		Ave.	Max.		I	II	III	IV	I	II	III	IV
	Value	Date	Value	Date									
EU	-87	I-05	-82	-70	II-00	-85	-86	-86	-86	-87	-87	-86	-87
Euro area	-89	IV-05	-83	-78	I-01	-88	-87	-87	-88	-89	-88	-88	-89
BE	-93	IV-03	-80	-67	II-95	-90	-91	-87	-90	-89	-89	-88	-88
CZ	-92	I-05	-88	-83	II-02	-88	-92	-88	-88	-92	-85	-88	-88
DK	-86	III-03	-76	-62	II-02	-83	-79	-79	-75	-80	-82	-81	-78
DE	-93	IV-05	-83	-78	IV-99	-91	-93	-91	-91	-92	-92	-91	-93
EE	-90	I-05	-40	11	IV-99	-86	-88	-89	-89	-90	-89	-79	-80
EL	-92	I-95	-82	-68	I-03	-82	-82	-82	-80	-84	-79	-86	-83
ES	-88	IV-03	-80	-71	III-99	-86	-85	-86	-82	-85	-83	-81	-82
FR	-90	II-92	-87	-81	II-04	-84	-81	-84	-85	-85	-86	-84	-88
IE	-83	IV-93	-79	-73	III-04	-77	-79	-73	-76	-76	-76	-78	-74
IT	-94	III-05	-86	-79	IV-90	-90	-88	-92	-92	-94	-92	-94	-94
CY	-80	I-03	-73	-65	I-04	-65	-69	-67	-74	-75	-72	-75	-72
LV	-95	I-03	-84	-15	I-02	-94	-76	-76	-70	-89	-77	-74	-75
LT	-91	IV-05	-88	-82	I-03	-91	-91	-89	-90	-91	-90	-91	-91
LU	-82	IV-03	-73	-64	IV-02	-76	-78	-72	-75	-78	-75	-73	-75
HU	-90	II-04	-77	-39	I-00	-90	-90	-89	-89	-84	-87	-86	-86
NL	-84	IV-03	-77	-68	III-99	-82	-79	-80	-83	-77	-80	-83	-80
AT	-99	I-04	-79	51	I-01	-99	-83	-85	-81	-90	-86	-87	-85
PL	-89	II-03	-86	-82	I-04	-82	-85	-87	-86	-88	-86	-86	-89
PT	-91	IV-05	-78	-70	II-90	-88	-89	-87	-89	-88	-90	-90	-91
SI	-89	IV-03	-77	-71	IV-96	-83	-83	-79	-82	-82	-83	-77	-76
SK	-90	IV-03	-86	-82	II-00	-87	-88	-89	-88	-88	-86	-88	-87
FI	-87	IV-03	-81	-76	III-02	-85	-84	-86	-85	-85	-82	-84	-82
SE	-78	I-96	-72	-61	IV-02	-73	-77	-74	-76	-75	-75	-73	-72
UK	-88	II-01	-75	-9	II-00	-75	-80	-80	-80	-81	-79	-80	-80

TABLE 4b (continued): **Quarterly survey of consumers****Intention to carry out home improvements over the next 12 months (s.a.)** ^{(a)(b)}

	Since 01/1990					2004				2005			
	Min.		Ave.	Max.		I	II	III	IV	I	II	III	IV
	Value	Date	Value	Date									
EU	-66	IV-96	-60	-51	II-00	-56	-55	-56	-54	-55	-56	-57	-56
Euro area	-68	III-93	-62	-57	III-00	-62	-59	-61	-60	-61	-61	-62	-61
BE	-65	III-97	-52	-32	III-01	-49	-50	-48	-48	-46	-47	-45	-38
CZ	-51	III-01	-36	-25	III-03	-35	-34	-32	-35	-31	-28	-39	-42
DK	-87	I-90	-66	-26	I-00	-64	-47	-60	-55	-67	-51	-59	-57
DE	-60	III-93	-54	-46	I-90	-51	-51	-54	-51	-52	-49	-53	-50
EE	-68	IV-92	-45	-16	III-02	-27	-32	-39	-44	-32	-20	-23	-22
EL	-83	III-95	-70	-44	IV-95	-72	-63	-64	-68	-79	-81	-80	-81
ES	-82	II-94	-73	-61	IV-90	-80	-80	-78	-74	-79	-74	-77	-76
FR	-79	IV-95	-72	-56	II-04	-64	-56	-59	-59	-59	-65	-60	-62
IE	-81	II-90	-68	-56	II-02	-63	-61	-59	-56	-58	-60	-62	-60
IT	-87	III-03	-70	-59	III-98	-84	-84	-85	-84	-85	-83	-82	-84
CY	-71	IV-04	-60	-46	III-01	-54	-62	-63	-71	-69	-67	-62	-61
LV	-77	IV-95	-59	-10	I-02	-46	-40	-44	-40	-51	-42	-39	-31
LT	-65	IV-01	-61	-57	I-03	-61	-59	-59	-62	-61	-60	-58	-58
LU	-44	I-03	-33	-20	I-05	-26	-22	-27	-25	-20	-33	-38	-38
HU	-73	II-04	-55	-23	III-00	-72	-73	-68	-71	-62	-68	-65	-68
NL	-59	II-96	-48	-35	IV-00	-47	-42	-43	-47	-46	-48	-55	-51
AT	-56	I-03	-38	3	I-01	-32	-23	-27	-28	-28	-24	-33	-26
PL	-48	III-03	-38	-30	III-04	-34	-31	-30	-36	-38	-42	-35	-33
PT	-85	III-93	-61	50	III-92	-75	-75	-75	-75	-79	-82	-85	-82
SI	-48	I-04	-30	-17	II-01	-48	-42	-34	-35	-33	-32	-36	-30
SK	-63	III-04	-56	-48	IV-01	-57	-63	-63	-60	-58	-55	-58	-57
FI	-72	III-98	-65	-51	IV-05	-64	-66	-65	-60	-53	-55	-53	-51
SE	-47	II-96	-31	-18	IV-04	-26	-27	-25	-18	-22	-21	-25	-22
UK	-74	III-96	-54	-7	II-00	-34	-37	-39	-35	-35	-37	-41	-40

(a) Data collected in January, April, July and October each year.

(b) Balances: i.e., differences between the percentages of respondents giving positive and negative replies.

TABLE 5: Monthly survey of retail trade (s.a.)^{(a)(b)}

		Since 01/1990						2004		2005									
		Min.		Ave.		Max.		Nov.	Dec.	Jan.	Feb.	Mar.	Apr.	May	June	July	Aug.	Sep.	Oct.
		Value	Date	Value	Date	Value	Date												
RETAIL TRADE	EU	-19	12-92	-8	4	07-90	-8	-6	-5	-7	-9	-9	-9	-11	-13	-10	-9	-6	
CONFIDENCE	Euro area	-21	03-93	-9	8	08-90	-10	-7	-6	-8	-10	-8	-8	-9	-10	-9	-8	-4	
INDICATOR	BE	-25	05-93	-6	13	04-90	-3	-2	1	-2	-10	-4	-10	-7	-10	-8	-9	0	
	CZ	-1	02-99	14	26	08-02	23	17	17	20	19	14	15	16	16	15	19	20	
	DK	-6	10-01	17	37	11-94	26	29	28	28	31	29	28	25	26	27	26	27	
	DE	-44	01-03	-18	21	02-91	-27	-19	-17	-22	-30	-25	-23	-22	-25	-23	-25	-19	
	EE	-1	04-03	17	30	04-04	20	14	18	20	22	25	22	22	28	21	22	24	
	EL	-24	06-95	2	27	03-04	9	8	13	5	9	10	4	2	-1	1	5	5	
	ES	-36	02-93	-7	10	06-00	-11	-10	-10	-12	-7	-2	-1	-6	-4	-4	-5	-4	
	FR	-37	04-97	-16	6	10-04	-1	1	-2	-3	0	1	-3	-5	-11	-9	-6	-7	
	IE	-21	05-03	3	24	06-00	-7	-1	-4	-8	-3	-11	-8	-1	-5	2	-10	-7	
	IT	-19	10-96	8	39	10-95	7	5	10	14	12	3	13	6	16	19	24	30	
	CY	-14	04-03	-5	5	04-05	-6	-1	-7	-3	0	5	1	-2	1	-4	-5	3	
	LV	1	10-96	9	19	06-03	13	10	12	14	11	11	13	15	17	17	16	17	
	LT	-25	09-00	-5	26	06-04	11	11	5	10	-5	-1	3	7	14	13	12	13	
	HU	-28	05-05	-8	9	11-97	-23	-24	-20	-20	-28	-24	-28	-25	-17	-26	-13	-12	
	NL	-16	12-03	12	30	10-99	-9	-10	-7	-10	-6	-4	-10	-8	-10	-9	-7	-3	
	AT	-29	03-03	-13	4	07-00	-18	-12	-15	-14	-10	-9	-15	-14	-13	-13	-10	-8	
	PL	-19	01-02	-6	7	07-98	-10	-8	-2	-6	-7	-8	-7	-6	-6	-5	-5	-5	
	PT	-27	01-03	-8	4	01-99	-11	-7	-7	-10	-7	-7	-10	-13	-17	-19	-19	-17	
	SI	3	01-01	11	23	04-99	13	14	13	10	8	14	13	13	18	16	16	16	
	SK	-17	10-93	8	34	11-98	3	-7	8	5	12	15	12	20	16	12	15	16	
	FI	-17	11-00	-4	10	05-04	-6	4	-1	-8	-4	-1	1	6	4	2	7	10	
	SE	-8	09-01	6	27	04-00	-3	0	0	2	0	1	-2	3	7	11	13	14	
	UK	-30	07-05	-4	20	06-04	0	-3	-5	-9	-13	-19	-22	-28	-30	-21	-22	-23	
PRESENT BUSINESS SITUATION	EU	-25	12-94	-8	18	04-90	-10	-6	-6	-11	-13	-12	-13	-17	-17	-12	-13	-10	
	Euro area	-29	12-94	-10	21	01-91	-17	-12	-8	-14	-15	-12	-13	-16	-14	-11	-12	-9	
Component of the retail confidence indicator	BE	-41	10-95	-6	29	06-00	-11	2	1	-7	-16	-4	-15	-10	-12	-3	-16	-1	
	CZ	0	11-98	28	52	08-02	45	43	49	52	49	39	39	39	40	40	41	44	
	DK	-1	08-01	29	57	11-94	43	49	52	44	47	47	47	44	46	51	50	46	
	DE	-66	02-02	-21	46	11-90	-36	-21	-23	-34	-37	-25	-27	-26	-25	-28	-27	-24	
	EE	6	01-03	35	63	05-04	36	42	56	35	36	41	35	40	51	39	46	45	
	EL	-50	04-95	-8	40	01-04	18	25	32	12	14	8	7	0	-8	-7	-6	0	
	ES	-72	07-93	-28	4	06-00	-34	-35	-31	-34	-28	-26	-30	-21	-23	-21	-23	-23	
	FR	-50	03-93	-13	11	10-94	-9	-5	3	-2	-1	0	-8	-7	-19	-17	-14	-18	
	IE	-30	05-03	6	37	06-98	-13	-10	-3	-4	-2	-10	-7	-3	-8	6	-5	-1	
	IT	-42	02-95	15	73	02-93	13	3	12	14	16	0	15	-10	17	18	21	34	
	CY	-46	02-03	-30	-13	04-04	-16	-22	-34	-18	-22	-26	-14	-23	-18	-26	-35	-19	
	LV	-18	07-96	5	32	07-03	20	19	20	22	14	17	20	28	25	26	27	24	
	LT	-37	03-00	-11	43	06-04	15	16	10	14	-5	-2	9	5	15	16	19	18	
	HU	-41	03-05	-7	16	03-98	-30	-30	-24	-19	-41	-37	-38	-32	-21	-36	-12	-12	
	NL	-27	12-03	28	57	06-99	-13	-12	-7	-10	-11	-4	-11	-4	-10	-9	-9	0	
	AT	-36	04-03	-12	13	07-00	-26	-14	-14	-13	-19	-11	-19	-15	-9	-13	-6	-4	
	PL	-36	01-01	-13	20	02-98	-15	-16	3	-8	-15	-12	-10	-6	-5	-4	-2	-4	
	PT	-46	01-03	-21	3	07-99	-32	-26	-26	-32	-26	-23	-28	-24	-31	-31	-32	-31	
	SI	2	04-02	18	44	01-99	24	21	15	17	11	15	13	13	17	14	16	13	
	SK	-35	06-95	10	58	11-98	-14	-22	2	-2	-1	19	10	11	10	14	26	17	
	FI	-15	11-00	8	40	05-04	-2	13	11	4	9	9	16	24	19	14	29	25	
	SE	-21	10-96	8	34	07-00	1	0	7	9	3	-1	-2	9	9	17	26	26	
	UK	-57	09-92	-5	42	06-04	15	14	-5	-8	-14	-22	-27	-34	-41	-29	-31	-26	
VOLUME OF STOCKS	EU	11	01-91	16	22	03-02	14	13	12	14	15	16	13	16	16	15	15	15	
	Euro area	7	01-91	16	23	10-96	12	12	11	13	13	14	11	14	15	14	15	14	
Component of the retail confidence indicator	BE	-5	09-90	13	32	03-92	3	6	5	8	15	12	12	9	21	10	7	1	
	CZ	0	03-00	10	27	05-95	9	15	8	13	13	17	13	14	12	13	14	14	
	DK	-1	04-98	18	32	04-00	13	16	18	13	14	15	15	16	14	19	20	20	
	DE	4	02-91	25	43	02-02	17	17	15	18	22	23	15	23	24	19	28	26	
	EE	3	07-05	11	18	07-04	15	15	12	16	13	13	10	8	3	6	7	8	
	EL	-7	11-02	13	41	12-93	23	28	12	18	21	20	25	16	16	15	14	15	
	ES	-8	02-96	5	16	07-92	8	8	6	8	8	6	5	5	9	9	8	7	
	FR	-3	10-93	11	21	09-98	10	7	14	14	8	8	8	6	10	10	10	10	
	IE	-5	06-00	10	25	08-98	12	8	8	10	9	7	9	6	6	5	9	8	
	IT	-8	10-99	8	43	10-96	6	6	-2	3	1	5	5	11	2	0	-1	-3	
	CY	-15	04-05	-6	6	03-05	-6	-11	-7	-1	6	-15	-14	-4	-7	-5	-11	-13	
	LV	-18	07-96	-4	8	12-02	1	2	-1	0	0	3	3	1	0	-1	3	-1	
	LT	-21	12-99	-1	13	10-96	0	2	3	2	13	-2	-1	-3	-6	-1	0	-1	
	HU	4	02-96	23	33	01-99	23	28	24	23	21	17	24	21	16	16	23	19	
	NL	5	07-97	11	19	06-05	14	18	16	16	17	16	16	19	16	16	15	16	
	AT	-2	01-00	25	36	01-96	23	23	31	25	25	21	24	22	28	24	26	20	
	PL	-9	09-03	-2	7	05-05	-1	-5	5	5	4	5	7	6	5	5	5	4	
	PT	-3	12-03	9	25	06-90	7	1	5	2	2	3	5	5	4	12	11	10	
	SI	-1	07-05	16	33	01-99	18	12	14	14	13	11	8	7	-1	4	4	3	
	SK	-5	06-00	10	26	02-95	12	12	9	14	7	7	3	4	5	2	4	2	
	FI	20	10-05	29	40	08-00	24	22	24	29	29	30	28	25	26	32	32	20	
	SE	18	04-00	31	44	02-98	32	31	29	29	30	30	29	28	26	22	24	25	
	UK	4	04-93	19	33	02-91	19	17	14	16	24	26	21	25	26	22	17	18	

TABLE 5 (continued): **Monthly survey of retail trade (s.a.)** ^{(a)(b)}

		Since 01/1990						2004		2005									
		Min.		Ave.		Max.		Nov.	Dec.	Jan.	Feb.	Mar.	Apr.	May	June	July	Aug.	Sep.	Oct.
		Value	Date	Value	Date	Value	Date												
EXPECTED BUSINESS SITUATION	EU	-20	01-93	2	18	06-00	1	2	3	3	0	1	-1	-1	-5	-1	3	6	
	Euro area	-26	02-93	-2	17	06-00	-1	2	1	2	-1	1	1	2	-3	-1	5	11	
Component of the retail confidence indicator	BE	-23	04-03	2	22	04-98	5	-1	7	7	1	3	-5	0	3	-13	-3	1	
	CZ	2	09-00	23	46	02-02	34	24	10	22	21	22	18	21	18	18	30	31	
	DK	8	10-01	41	71	07-94	50	54	50	53	58	54	51	47	46	49	46	54	
	DE	-42	10-02	-8	26	12-90	-27	-20	-13	-14	-30	-26	-25	-17	-27	-23	-21	-5	
	EE	4	04-03	28	62	01-03	39	16	9	41	43	46	42	34	35	31	29	35	
	EL	-4	05-95	26	60	06-00	34	26	20	22	32	40	30	22	21	27	33	30	
	ES	-34	02-93	14	34	04-91	11	14	8	5	20	27	26	18	17	20	15	18	
	FR	-64	02-93	-23	19	10-04	16	14	4	5	7	10	6	-3	-4	1	7	7	
	IE	-31	07-03	12	44	11-97	5	15	-1	-9	0	-14	-6	7	-2	5	-16	-12	
	IT	-20	03-93	17	59	06-96	12	18	16	30	20	15	29	37	32	38	49	53	
	CY	-13	06-02	9	28	03-05	-7	9	8	8	28	26	5	12	15	10	8	15	
	LV	2	01-04	19	36	09-99	21	13	14	19	18	20	23	18	26	25	23	26	
	LT	-35	09-00	-3	45	03-04	18	19	8	17	4	-3	0	12	20	21	18	20	
	HU	-25	08-05	7	39	02-98	-17	-15	-14	-18	-22	-17	-22	-21	-13	-25	-5	-6	
	NL	-5	12-03	19	41	10-99	1	1	1	-3	9	9	-1	-2	-3	-4	4	7	
	AT	-24	03-03	-3	15	07-00	-5	0	0	-4	14	5	-4	-5	-1	-1	4	0	
	PL	-33	12-01	-7	17	07-98	-15	-12	-3	-6	-4	-6	-6	-6	-7	-6	-7	-5	
	PT	-26	01-03	7	39	01-90	8	8	10	5	8	5	3	9	-16	-13	-13	-10	
	SI	15	02-03	31	47	04-99	31	34	37	27	26	37	35	34	35	38	36	38	
	SK	-14	11-94	23	60	12-96	34	13	30	30	45	32	30	54	42	23	23	32	
FI	-4	04-03	10	39	05-97	7	20	9	1	9	17	16	19	18	22	22	25		
SE	19	10-01	42	67	04-00	21	29	21	26	26	33	24	29	39	40	39	42		
UK	-26	10-05	11	40	01-97	4	-6	5	-2	-3	-8	-19	-26	-23	-13	-18	-26		
INTENTIONS OF PLACING ORDERS	EU	-16	10-02	-3	13	01-90	-9	-6	-6	-3	-8	-8	-10	-7	-9	-6	-4	-5	
	Euro area	-23	10-02	-5	14	01-90	-11	-7	-8	-3	-8	-9	-10	-5	-8	-6	-3	-3	
	BE	-27	05-93	-7	15	03-90	-10	-6	-8	-7	-8	-8	-7	-6	-7	-10	-9	-2	
	CZ	-34	02-96	29	56	02-95	22	30	10	22	14	16	16	13	10	26	27	27	
	DK	-12	10-01	19	58	07-94	28	25	21	28	27	23	28	22	23	26	28	26	
	DE	-51	09-02	-15	21	02-91	-31	-21	-22	-15	-27	-28	-32	-23	-27	-24	-23	-23	
	EE	-3	03-03	17	33	01-03	24	10	2	23	29	29	24	29	29	21	14	17	
	EL	-23	04-93	10	38	06-96	5	16	14	2	15	14	9	-3	-10	2	14	5	
	ES	-31	02-93	5	21	01-90	-1	4	-1	-3	1	11	11	9	12	11	6	3	
	FR	-37	12-92	-14	11	10-99	-2	-8	-4	-3	-3	-2	-8	-6	-11	-8	-4	-7	
	IE	-43	05-03	-5	27	08-00	-14	0	-21	-18	-13	-11	-7	2	-13	1	-18	-19	
	IT	-25	10-97	22	69	04-92	12	14	11	35	18	7	22	34	34	37	47	53	
	CY	-44	06-02	-10	10	02-04	2	4	-9	-15	1	4	-2	9	7	-3	-6	-6	
	LV	-4	10-96	9	27	03-02	17	9	10	11	16	13	19	14	25	18	18	21	
	LT	-23	01-03	6	51	07-04	27	19	17	23	5	14	1	4	14	25	23	27	
	HU	-29	03-05	-2	23	05-98	-25	-19	-17	-25	-29	-18	-26	-21	-22	-26	-13	-17	
	NL	-22	09-03	3	25	08-99	-13	-15	-12	-17	-10	-7	-16	-14	-19	-17	-11	-9	
	AT	-42	03-99	-31	-16	06-00	-32	-26	-25	-28	-27	-22	-26	-23	-21	-24	-23	-25	
	PL	-30	12-01	-6	13	12-98	-13	-8	-3	-6	-2	-7	-5	-6	-6	-8	-8	-3	
	PT	-41	01-03	-13	12	11-98	-12	-11	-8	-3	-6	-13	-23	-19	-20	-27	-30	-25	
	SI	-2	10-01	15	30	10-00	14	16	12	10	6	13	19	13	21	14	17	19	
	SK	-19	03-96	34	78	01-02	43	19	34	37	51	47	53	54	60	32	33	33	
	FI	-20	07-03	-6	11	05-05	-1	9	9	-4	4	4	11	3	2	7	4	8	
	SE	-17	10-01	14	52	03-00	-2	3	2	6	3	5	0	0	9	5	11	18	
	UK	-37	03-91	3	34	08-96	-2	-6	0	-9	-12	-12	-20	-22	-21	-18	-19	-25	
EMPLOYMENT EXPECTATIONS	EU	-13	12-92	-1	9	08-00	-2	-3	0	-1	0	-1	1	0	-2	-2	0	0	
	Euro area	-11	12-92	-1	10	08-00	-1	-3	2	0	1	1	4	5	2	1	2	3	
	BE	-13	12-92	3	16	04-90	10	11	15	9	4	2	4	8	6	7	10	8	
	CZ	-37	01-95	1	22	05-02	9	17	6	8	8	1	6	-2	-4	8	11	11	
	DK	-8	05-01	8	28	05-00	6	10	10	9	16	12	15	10	12	15	20	13	
	DE ^(c)	-32	01-03	-8	15	03-98	-9	-11	-6	-10	-12	-10	-7	-8	-6	-6	-4	-10	
	EE	-8	05-02	2	13	05-05	4	3	3	7	8	10	13	4	5	-1	4	8	
	EL	-12	07-05	28	62	03-98	5	4	3	2	0	8	0	-9	-12	-5	2	-10	
	ES	-19	09-93	0	8	12-98	3	3	-1	4	5	3	4	3	2	3	2	4	
	FR	-14	06-91	-2	12	10-00	-2	-6	5	1	0	3	1	0	-3	-2	2	4	
	IE	-17	05-03	2	22	03-98	-5	-4	-9	-6	1	-3	-2	0	-7	-4	-1	-12	
	IT	-34	02-97	11	54	02-00	15	8	19	21	31	26	42	47	32	16	24	38	
	CY	-4	07-02	0	5	10-05	0	-1	-1	0	-2	1	-1	1	0	0	5		
	LV	-23	04-96	0	14	07-05	4	10	10	10	9	5	9	9	14	14	13	8	
	LT	-48	07-95	-11	68	10-05	19	50	41	60	48	47	42	42	52	63	64	68	
	HU	-36	05-96	-9	5	11-03	-16	-13	-10	-13	-19	-15	-18	-16	-16	-19	-13	-15	
	NL	-6	08-05	2	13	06-99	-2	-3	-4	-3	-2	-2	-4	-3	-6	-6	-5	-3	
	AT	-20	03-99	-5	71	01-96	-8	-6	-5	-7	-6	-7	-7	-6	-7	-4	-6	-7	
	PL	-28	12-01	-12	2	07-97	-9	-10	-8	-7	-7	-9	-8	-8	-8	-10	-6	-6	
	PT	-23	05-03	-5	13	09-97	-11	-6	-3	-11	-11	-9	-11	-12	-11	-14	-19	-20	
	SI	-46	02-99	-9	11	06-04	-6	-4	5	-13	-13	-4	-13	-5	-8	-10	5	-9	
	SK	-71	12-93	-8	31	09-02	-6	-26	-15	-13	-17	-9	-3	0	-1	1	2	-2	
	FI	-16	07-03	-3	10	05-04	1	-3	-2	-2	-2	-4	-3	2	1	-1	-6	2	
	SE	-34	10-96	-4	23	06-00	-13	-11	-15	-19	-15	-14	-19	-16	-17	-11	-9	-8	
	UK	-32	12-91	-2	25	10-97	-3	-1	-10	-7	-2	-6	-15	-18	-14	-10	-10	-16	

(a) United Kingdom: refers to the volume of sales for the time of the year.

(b) The indicator is the arithmetic average of the balances (%) for the present and the future business situation, and for stocks – with inverted sign.

(c) Quarterly data, seasonally adjusted monthly.

TABLE 6: Monthly survey of construction industry (s.a.)^(a)

		Since 01/1985			2004		2005												
		Min.		Ave.	Max.		Nov.	Dec.	Jan.	Feb.	Mar.	Apr.	May	June	July	Aug.	Sep.	Oct.	
		Value	Date	Value	Date														
CONSTRUCTION CONFIDENCE INDICATOR	EU	-42	10-93	-20	3	02-90	-10	-10	-10	-10	-10	-11	-11	-12	-11	-9	-7	-7	
	Euro area	-44	08-96	-20	4	03-90	-12	-12	-12	-12	-12	-12	-12	-13	-12	-9	-8	-8	
	BE	-35	11-95	-12	10	02-00	-4	-9	-6	-6	-4	-6	-5	-6	-5	-6	-4	-3	
	CZ	-64	06-99	-18	3	06-95	-5	1	3	-4	-7	-9	-8	-10	-7	-7	-1	0	
	DK	-37	12-91	-8	19	03-98	2	4	2	4	3	5	8	6	5	3	5	14	
	DE	-62	11-02	-36	3	01-91	-53	-55	-50	-55	-51	-50	-47	-45	-44	-43	-38	-38	
	EE	-46	12-99	3	33	05-05	16	23	24	28	31	32	33	30	29	33	27	29	
	EL	-53	03-05	-12	33	04-00	-47	-49	-44	-48	-53	-48	-31	-38	-49	-47	-45	-40	
	ES	-57	10-92	-2	42	01-99	22	24	17	26	28	20	15	10	17	25	26	23	
	FR	-60	03-93	-16	34	10-00	7	8	11	11	11	8	7	5	9	7	8	12	
	IE	-54	09-02	10	58	06-97	28	27	13	12	27	29	15	45	34	20	28	24	
	IT	-68	10-93	-13	21	05-90	5	4	6	2	-5	-3	-1	-5	-8	-3	-5	-10	
	CY	-7	08-05	12	35	12-03	-3	-6	7	10	7	9	8	-4	-7	-7	-2	-4	
	LV	-64	07-93	-28	7	09-05	-3	-7	0	-2	3	3	3	5	5	6	7	7	
	LT	-76	09-00	-41	2	09-05	-9	-11	-10	-5	-2	-22	-11	-4	1	1	2	1	
	LU	-73	03-94	-26	24	03-90	-16	-10	-12	-22	-29	-20	-21	-26	-33	-26	-32	-22	
	HU	-24	12-04	-8	11	09-98	-20	-24	-19	-20	-17	-17	-17	-21	-15	-16	-9	-13	
	NL	-25	05-03	-3	27	12-00	-7	-7	-6	-5	-2	-1	-1	1	1	4	6	4	
	AT	-60	04-96	-29	-13	02-03	-21	-16	-25	-22	-24	-24	-20	-16	-23	-18	-14	-13	
	PL	-63	12-02	-43	-22	03-98	-33	-39	-29	-32	-30	-29	-29	-31	-29	-28	-27	-24	
	PT	-56	02-03	-26	-1	12-97	-34	-32	-33	-40	-34	-39	-34	-42	-44	-39	-41	-31	
	SI	-33	06-02	-8	6	01-05	-1	-1	6	2	2	-2	-4	-7	-8	-9	-8	-11	
	SK	-86	07-99	-28	18	03-97	-23	-20	-12	-17	-13	-11	-11	-9	-7	-10	-9	-11	
	FI	-97	09-91	-17	48	06-98	-4	4	-7	12	16	21	13	14	21	22	10	10	
	SE	-83	12-93	-37	27	07-05	4	14	10	3	-3	6	6	15	27	8	21	14	
	UK	-79	06-91	-20	5	08-04	1	-1	-2	-3	-2	-7	-10	-12	-12	-11	-10	-5	
	ORDER BOOKS	EU	-55	08-93	-29	-2	03-90	-17	-18	-16	-15	-15	-19	-17	-19	-18	-17	-15	-14
		Euro area	-55	08-93	-28	-3	03-90	-18	-19	-17	-15	-15	-19	-17	-19	-18	-16	-14	-14
Component of the construction confidence indicator	BE	-48	02-96	-23	2	02-00	-14	-20	-16	-16	-12	-15	-15	-16	-14	-14	-15		
	CZ	-72	06-99	-22	9	12-02	-9	2	7	-4	-7	-13	-12	-13	-13	-8	-3		
	DK	-49	12-91	-11	33	03-95	0	4	2	3	4	6	10	10	8	6	5	15	
	DE	-71	10-02	-46	-7	03-91	-65	-66	-64	-66	-61	-63	-59	-59	-58	-54	-52	-47	
	EE	-67	12-99	-4	40	05-05	8	17	28	26	30	35	40	35	30	33	26	25	
	EL	-77	06-95	-36	16	04-00	-54	-53	-49	-61	-63	-60	-48	-59	-61	-63	-66	-63	
	ES	-64	08-93	1	50	02-05	36	32	30	50	45	31	37	28	29	27	35	29	
	FR	-74	09-93	-23	37	10-00	3	2	9	10	8	1	-1	-1	3	0	0	7	
	IE	-61	06-94	4	68	06-97	25	16	4	-9	28	25	21	37	23	19	33	14	
	IT	-84	02-94	-25	17	05-90	-6	-6	-3	-3	-10	-10	-11	-15	-15	-11	-9	-19	
	CY	-10	12-04	6	41	12-03	2	-10	6	5	-5	4	-5	-6	-9	-9	-3	-10	
	LV	-84	01-96	-51	-7	08-05	-20	-22	-16	-17	-14	-12	-11	-8	-9	-7	-11	-10	
	LT	-96	09-00	-64	-13	08-05	-29	-34	-35	-30	-26	-28	-37	-21	-16	-13	-15	-14	
	LU	-73	08-93	-28	12	03-90	-17	-9	-19	-28	-32	-24	-21	-24	-37	-21	-40	-25	
	HU	-35	12-04	-17	3	09-98	-32	-35	-32	-33	-30	-28	-28	-33	-26	-25	-15	-22	
	NL	-30	09-93	-8	20	09-00	-15	-17	-13	-13	-9	-7	-4	-5	-3	-1	2	-2	
	AT	-65	04-96	-41	-21	10-05	-33	-28	-35	-38	-38	-36	-33	-30	-35	-29	-23	-21	
	PL	-99	12-02	-68	-32	12-01	-63	-76	-61	-62	-60	-59	-60	-59	-56	-56	-54	-53	
	PT	-79	05-94	-44	-9	12-97	-56	-51	-53	-61	-57	-56	-55	-62	-60	-57	-63	-58	
	SI	-42	06-02	-13	3	08-04	1	0	2	0	-5	-9	-11	-13	-21	-27	-19	-28	
	SK	-93	03-94	-44	-5	03-97	-36	-31	-27	-29	-25	-23	-26	-23	-26	-34	-21	-30	
	FI	-99	12-93	-25	38	06-98	-3	1	-3	9	7	10	5	9	12	21	11	10	
	SE	-97	05-97	-49	33	01-90	-12	0	-7	-5	-10	-2	-2	-5	13	5	14	11	
	UK	-87	06-91	-34	-3	01-90	-7	-9	-7	-10	-11	-18	-19	-24	-23	-23	-21	-17	
	EMPLOYMENT EXPECTATIONS	EU	-34	04-96	-12	9	02-90	-3	-2	-4	-6	-5	-3	-5	-4	-3	-1	0	1
		Euro area	-38	04-96	-12	11	02-90	-6	-5	-6	-8	-8	-5	-7	-6	-5	-2	-1	-1
	Component of the construction confidence indicator	BE	-24	11-95	-1	19	02-90	6	2	3	3	5	4	5	3	5	2	6	8
		CZ	-57	06-99	-14	12	06-95	-1	1	-1	-3	-7	-4	-4	-6	-1	-5	1	2
DK		-31	09-91	-5	42	03-98	3	5	2	5	3	3	6	2	2	-1	5	12	
DE		-59	03-96	-27	19	02-90	-40	-43	-36	-43	-41	-36	-35	-32	-30	-32	-25	-29	
EE		-45	03-99	9	68	01-97	24	29	20	30	33	30	27	25	27	33	29	34	
EL		-64	09-04	13	60	03-99	-40	-45	-40	-34	-42	-36	-14	-18	-37	-31	-25	-18	
ES		-66	03-93	-6	54	01-99	7	17	4	2	11	8	-6	-9	4	22	17	17	
FR		-51	03-93	-9	31	10-00	11	14	13	13	14	16	15	12	16	14	16	17	
IE		-50	09-02	16	61	07-04	31	38	22	32	26	34	9	54	44	21	23	35	
IT		-60	10-93	-2	31	06-04	15	14	15	8	-1	5	9	5	-1	6	0	-2	
CY		-8	11-04	18	48	11-03	-8	-1	7	16	19	14	20	-2	-5	-5	-2	3	
LV		-45	07-93	-6	26	03-04	14	9	16	13	20	18	18	18	18	19	25	23	
LT		-56	09-00	-17	37	03-03	11	13	16	20	21	-15	16	13	17	15	19	16	
LU		-77	02-94	-24	36	03-90	-14	-12	-5	-15	-26	-16	-21	-28	-29	-30	-25	-18	
HU		-13	12-04	2	21	01-98	-8	-13	-6	-7	-5	-5	-7	-8	-4	-7	-4	-4	
NL		-26	05-03	2	36	12-00	1	3	1	3	4	6	2	6	4	8	11	9	
AT		-76	02-01	-18	14	02-03	-9	-4	-16	-5	-9	-12	-7	-3	-10	-7	-4	-5	
PL		-49	04-02	-13	18	05-96	-3	-2	2	-2	-1	2	1	-3	-2	-1	1	4	
PT		-47	02-03	-8	19	09-97	-13	-12	-12	-19	-12	-22	-13	-23	-29	-22	-18	-4	
SI		-23	06-02	-2	10	08-05	-2	-1	9	3	9	5	2	0	5	10	4	6	
SK		-86	07-99	-11	41	01-97	-11	-9	3	-5	-2	1	4	6	11	13	3	9	
FI		-100	04-91	-10	59	03-97	-4	7	-11	16	26	32	21	20	30	23	9	10	
SE		-78	01-97	-25	45	01-01	20	27	26	11	4	13	13	35	40	10	27	17	
UK		-7																	

TABLE 6 (continued): Monthly survey of construction industry (s.a.)^(a)

		Since 01/1985			2004		2005											
		Min.		Ave.	Max.		Nov.	Dec.	Jan.	Feb.	Mar.	Apr.	May	June	July	Aug.	Sep.	Oct.
		Value	Date		Value	Date												
TREND OF	EU	-36	03-93	-8	15	03-90	-2	2	8	1	-8	-4	4	1	3	6	6	7
ACTIVITY	Euro area	-40	03-93	-8	17	03-90	-4	1	6	0	-10	-5	4	0	3	6	5	5
COMPARED WITH	BE	-37	03-91	-4	36	02-90	-1	-5	2	3	-14	0	10	-7	1	0	-2	1
PRECEDING	CZ	-34	06-99	24	77	01-05	60	60	77	61	50	41	36	34	33	40	40	41
MONTHS	DK	-21	04-03	-3	19	01-98	8	8	5	9	8	8	8	9	4	5	7	12
	DE	-44	03-96	-19	19	03-90	-27	-25	-23	-29	-39	-25	-14	-21	-18	-13	-15	-14
	EE	-25	03-99	18	47	02-95	40	38	42	46	38	32	38	33	19	22	24	23
	EL	-50	04-05	5	61	06-98	-24	-23	-23	-35	-44	-50	-23	-15	-27	-33	-41	-39
	ES	-49	07-97	6	59	01-99	-2	22	27	16	5	23	38	32	30	40	38	43
	FR	-64	09-93	-8	42	07-00	19	16	20	19	13	10	8	11	19	15	14	18
	IE	-45	09-91	3	47	05-96	27	10	24	-7	15	6	0	-5	27	17	-12	15
	IT	-50	03-93	-2	26	07-04	5	6	15	11	3	2	7	-3	1	5	7	-7
	CY	-29	09-04	6	78	09-02	-15	-12	9	4	1	34	-7	-13	-6	-10	50	-24
	LV	-47	04-96	-2	44	06-02	19	9	21	19	21	25	24	25	24	19	22	19
	LT	-61	03-00	-4	81	06-02	11	0	11	23	-7	10	18	19	19	14	27	27
	LU	-68	10-02	-24	30	04-91	-18	-4	-2	-9	-32	-41	-32	-25	-28	-28	-35	-38
	HU	-37	03-03	-8	14	03-99	-14	-18	-17	-19	-20	-12	-12	-17	-8	-6	1	3
	NL	-41	02-96	-2	37	03-97	-6	-1	12	2	-5	1	5	5	7	8	10	5
	AT	-87	04-96	-8	27	01-04	8	15	22	-16	-38	-28	-7	1	-7	12	10	7
	PL	-30	01-02	9	42	01-05	20	24	42	23	0	-3	4	8	13	13	20	22
	PT	-37	09-03	-9	24	05-97	-13	-16	-8	-12	-24	-29	-19	-27	-34	-28	-26	-20
	SI	-17	08-05	10	33	02-04	15	13	11	3	1	-4	-7	-3	-17	-17	-7	-1
	SK	-43	06-99	7	53	12-04	50	53	37	3	-6	0	18	24	27	25	26	27
	FI	-88	09-91	5	75	01-98	17	26	25	29	25	11	10	23	21	37	33	31
	SE	-67	12-91	-11	50	10-05	13	10	16	13	12	11	20	34	50	41	45	50
	UK	-69	06-91	-6	16	02-04	3	4	9	2	-1	-6	-1	-2	-6	-5	-2	3
PRICE	EU	-22	03-93	0	24	02-90	9	7	7	4	2	4	2	1	2	6	7	7
EXPECTATIONS	Euro area	-27	04-96	-2	31	04-90	4	2	2	-1	-2	0	-2	-1	-1	2	3	3
	BE	-22	01-96	-1	29	01-90	0	0	-1	-2	-1	1	-1	-1	3	4	7	5
	CZ	-39	08-00	42	80	02-95	27	19	18	22	23	18	14	21	16	26	23	23
	DK	-36	03-03	-16	4	10-05	-3	-5	-4	-6	-6	-5	-5	-7	-7	-6	-4	4
	DE	-45	03-96	-13	45	02-90	-20	-18	-19	-21	-25	-18	-19	-20	-21	-16	-15	-15
	EE	-29	09-99	31	88	04-94	42	46	40	41	43	38	42	58	56	59	67	65
	EL	-39	06-05	6	35	06-95	-32	-32	-23	-30	-28	-38	-39	-39	-19	-17	-15	2
	ES	-20	10-93	18	71	10-00	39	35	25	20	20	23	20	23	29	31	28	28
	FR	-60	03-93	-16	32	10-00	3	-3	1	0	1	-4	-6	-8	-6	-1	0	0
	IE	-66	07-03	5	58	03-00	8	5	10	-10	-1	8	5	11	11	-1	10	-9
	IT	-16	07-93	18	63	06-90	22	15	29	16	12	17	13	16	9	8	14	5
	CY	-1	07-05	32	76	06-04	24	41	26	17	21	12	7	1	-1	27	3	10
	LV	-11	03-01	26	72	10-05	60	62	66	60	48	59	54	53	57	61	71	72
	LT	-5	03-01	35	89	01-95	48	48	41	46	42	42	49	39	53	43	72	53
	LU	-67	05-93	-28	29	11-00	-42	-41	-38	-35	-37	-29	-42	-48	-42	-42	-35	-29
	HU	-3	01-05	10	32	03-01	10	9	-3	1	4	6	5	-1	0	2	6	7
	NL	-7	01-04	25	69	04-01	9	5	-2	11	14	16	17	21	20	24	28	27
	AT	-53	04-96	-11	18	06-91	-4	7	4	0	-1	1	-3	-4	-5	-3	0	7
	PL	-27	03-02	16	45	05-96	10	8	12	9	7	5	1	1	2	4	6	7
	PT	-40	05-03	0	48	06-90	-10	-12	-11	-10	-7	-23	-10	-23	-21	-10	-17	-17
	SI	-6	05-02	5	16	05-04	13	9	3	5	3	3	5	-2	1	0	5	9
	SK	-20	08-00	54	93	06-97	38	15	27	25	22	28	27	31	30	32	34	37
	FI	-45	06-91	9	65	05-97	10	4	3	13	9	29	16	27	12	18	12	27
	SE	-75	06-91	-15	33	01-01	11	10	16	7	5	12	23	19	-17	24	17	14
	UK	-56	12-90	15	43	08-04	43	37	38	33	25	26	23	15	25	25	24	28

(a) The indicator is the average of the balances (%) for the questions on order-books and employment expectations.

TABLE 7a: Manufacturing industry; future Member States (s.a.)^(a)
Balances: i.e.differences between the percentages of respondents giving positive and negative replies (s.a.)

		Since 01/1990			2004		2005											
		Min.		Ave.	Max.		Nov.	Dec.	Jan.	Feb.	Mar.	Apr.	May	June	July	Aug.	Sep.	Oct.
		Value	Date	Value	Date													
CONFIDENCE INDICATOR	BG	-30	06-93	-8	8	11-95	2	3	2	2	0	2	3	2	2	2	0	1
	RO	-22	09-92	-1	28	06-96	6	6	5	2	4	-3	-1	-3	-1	0	-2	0
PRODUCTION EXPECTATIONS	BG	-17	02-97	21	42	11-95	32	36	30	30	29	32	32	32	31	29	23	26
	RO	-8	07-92	23	52	03-03	28	24	29	29	30	20	19	14	17	17	21	22
ORDER BOOKS	BG	-65	06-93	-43	-19	10-00	-34	-33	-33	-31	-33	-34	-31	-34	-33	-31	-32	-32
	RO	-53	06-99	-16	50	06-96	-12	-10	-9	-12	-11	-16	-16	-16	-18	-13	-18	-15
STOCKS OF FINISHED PRODUCTS ^(b)	BG	-22	06-97	2	35	08-93	-8	-7	-7	-7	-5	-7	-7	-6	-9	-9	-10	-10
	RO	-4	06-96	10	51	07-92	-2	-2	5	11	7	13	6	6	3	3	8	8

(a) The confidence indicator is the arithmetic average of the three components (the last with inverted sign).
(b) Highest figure is considered as minimum, lowest figure is considered as maximum.

TABLE 7b: Services^(a)

		Since 01/1990			2004		2005											
		Min.		Ave.	Max.		Nov.	Dec.	Jan.	Feb.	Mar.	Apr.	May	June	July	Aug.	Sep.	Oct.
		Value	Date	Value	Date													
CONFIDENCE INDICATOR	BG	15	03-03	29	42	06-02	21	24	30	26	29	28	31	35	30	23	24	22
	RO⁽ⁿ⁾	6	02-03	29	72	06-04	32	29	30	20	20	22	26	17	25	26	22	22
ASSESSMENT OF BUSINESS CLIMATE	BG	16	12-04	30	66	05-02	17	16	21	16	25	26	26	43	32	21	22	16
	RO⁽ⁿ⁾	9	12-03	38	75	04-03	41	34	43	21	22	25	29	19	20	27	19	25
EVOLUTION OF DEMAND IN RECENT MONTHS	BG	-1	05-02	17	36	03-04	21	14	15	12	16	14	19	17	23	16	23	12
	RO⁽ⁿ⁾	-4	02-03	22	69	06-04	31	28	23	18	16	17	20	9	15	20	27	30
EVOLUTION OF DEMAND IN THE MONTHS AHEAD	BG	16	03-03	39	59	05-02	26	43	53	48	45	46	47	44	37	31	28	38
	RO⁽ⁿ⁾	-23	01-03	26	72	06-04	24	26	24	20	22	23	28	22	40	31	19	10

(a) The confidence indicator is the arithmetic average of the three components.
(n) Not seasonally adjusted.

TABLE 7c: Consumer opinion and financial condition; future Member States (a)

		Since 01/1990			2004		2005											
		Min.		Ave.	Max.		Nov.	Dec.	Jan.	Feb.	Mar.	Apr.	May	June	July	Aug.	Sep.	Oct.
		Value	Date	Value	Date													
CONFIDENCE INDICATOR	BG⁽ⁿ⁾	-39	08-03	-28	-14	08-01	-29	-27	-27	-26	-23	-26	-22	-19	-23	-26	-26	-32
	RO⁽ⁿ⁾	-33	07-02	-24	-13	01-05	-14	-14	-13	-18	-20	-22	-22	-21	-24	-25	-25	-26
FINANCIAL SITUATION OVER NEXT 12 MONTHS	BG⁽ⁿ⁾	-23	07-03	-12	3	07-01	-11	-11	-8	-9	-8	-9	-6	-4	-6	-11	-12	-19
	RO⁽ⁿ⁾	-14	07-02	-3	9	11-04	9	7	9	5	3	-1	1	1	-1	-2	-2	-3
GEN. ECON. SITUATION OVER NEXT 12 MONTHS	BG⁽ⁿ⁾	-25	08-03	-8	16	07-01	-9	-5	-4	-4	0	-3	0	2	-3	-12	-10	-24
	RO⁽ⁿ⁾	-14	07-02	-2	12	01-05	8	7	12	8	6	1	-1	1	-7	-3	-7	-6
SAVINGS OVER NEXT 12 MONTHS	BG⁽ⁿ⁾	-81	03-02	-75	-67	10-05	-78	-75	-76	-74	-73	-74	-69	-68	-71	-67	-69	-67
	RO⁽ⁿ⁾	-63	12-03	-54	-46	12-04	-46	-46	-49	-52	-49	-53	-52	-50	-48	-56	-54	-52
UNEMPLOYMENT OVER NEXT 12 MONTHS	BG⁽ⁿ⁾	2	07-01	19	31	03-02	17	19	20	17	12	17	11	7	14	14	14	20
	RO⁽ⁿ⁾	24	11-04	38	51	01-02	24	25	25	31	39	35	36	37	40	39	37	42

(a) The confidence indicator is the average of the four components.
(n) Not seasonally adjusted.

TABLE 7d: Retail trade (s.a.)^(a)

		Since 01/1990			2004		2005											
		Min.		Ave.	Max.		Nov.	Dec.	Jan.	Feb.	Mar.	Apr.	May	June	July	Aug.	Sep.	Oct.
		Value	Date	Value	Date													
CONFIDENCE INDICATOR	BG	5	11-00	19	32	06-00	13	13	11	9	10	11	15	11	13	15	14	11
	RO	1	06-99	16	36	12-97	23	23	22	17	19	18	17	17	18	21	17	17
PRESENT BUSINESS SITUATION	BG	-3	09-96	22	54	11-97	8	12	8	5	2	8	15	11	14	19	15	15
	RO	-1	02-03	27	58	09-97	28	32	35	23	18	18	26	26	24	31	20	21
VOLUME OF STOCKS	BG	-55	03-97	-18	12	11-00	-8	-4	-4	-5	-6	-5	-6	-1	-2	-2	-4	-2
	RO	-20	12-94	4	55	10-95	-1	2	-3	-2	-1	0	3	4	2	2	2	4
EXPECTED BUSINESS SITUATION	BG	-33	02-97	16	43	03-00	23	23	21	16	21	20	25	20	22	22	22	17
	RO	-37	10-94	24	74	11-95	40	39	28	28	38	35	27	28	32	33	32	36

(a) The confidence indicator is the arithmetic average of the three components (for stocks, with inverted sign).

TABLE 7e: Construction industry; future Member States (s.a.)^(a)

		Since 01/1990			2004		2005											
		Min.		Ave.	Max.		Nov.	Dec.	Jan.	Feb.	Mar.	Apr.	May	June	July	Aug.	Sep.	Oct.
		Value	Date	Value	Date													
CONFIDENCE INDICATOR	BG	-56	03-93	-28	6	07-05	-9	-4	-9	-6	1	1	-1	1	6	-3	-3	-2
	RO	-60	09-99	-9	35	06-96	-6	-8	-12	-16	-15	-18	-18	-18	-16	-9	-12	-11
ORDER BOOKS	BG	-74	10-00	-42	-18	10-05	-23	-20	-21	-26	-24	-22	-24	-22	-21	-21	-19	-18
	RO	-89	09-99	-12	64	03-98	-20	-23	-24	-26	-31	-32	-30	-27	-29	-22	-29	-26
EMPLOYMENT EXPECTATIONS	BG	-50	01-93	-13	32	07-05	6	11	4	14	27	24	23	23	32	14	13	13
	RO	-39	06-97	-6	38	03-01	7	7	1	-5	1	-4	-5	-9	-2	5	5	4

(a) The confidence indicator is the average of both components.