

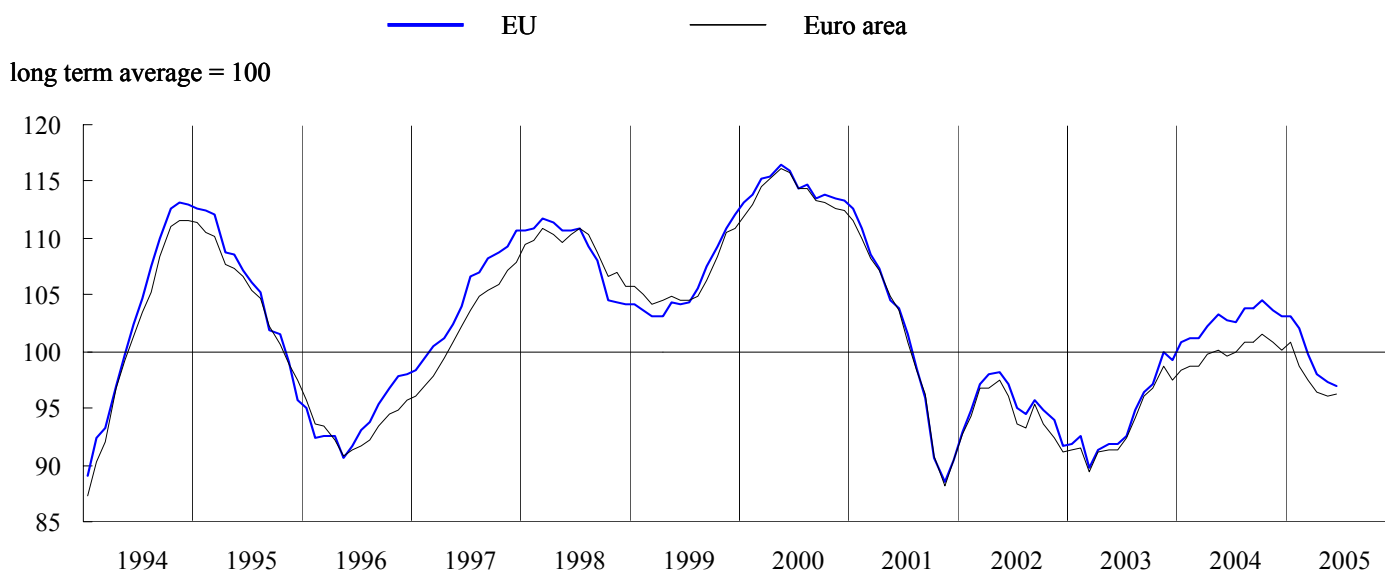


BUSINESS AND CONSUMER SURVEY RESULTS

June 2005

Next publication of Business and Consumer Survey Results scheduled for 29 July 2005
http://europa.eu.int/comm/economy_finance/indicators/businessandconsumersurveys_en.htm

GRAPH 1: Economic sentiment indicator (s.a.)



Slight decline of economic sentiment in the EU, improvement in the euro area

Business and consumers surveys for June suggest a bottoming out of economic sentiment. In the *euro area*, the *economic sentiment indicator (ESI)* rose slightly by 0.2 points, following its almost uninterrupted decline since October of last year. In the *EU*, the ESI fell slightly by 0.3 points; thus its decline continues to slow down.

From a sector perspective, the difference in the development of economic sentiment in the two areas was mainly due to the industry sector. While *industrial confidence* improved in the euro area, it remained unchanged in the EU. In both areas confidence in other business sectors (services, retail trade and construction) registered small declines, while consumer confidence remained unchanged.

From a country perspective, differences between the EU and the euro area can be mainly explained by the strong fall of economic sentiment in the *UK*. For the *UK* this is the fourth month in a row that economic sentiment worsens, and overall it has fallen from 113.5 in February to 94.8 in June. In the euro area, economic sentiment was mainly spurred by a strong improvement in *France*. In *Germany*, the indicator remained unchanged, while *Spain* and *Italy* saw a fall of the ESI.

The decline of industrial confidence comes to a halt in both the EU and the euro area

After a continuous decline observed since the end of last year, this month's *industrial confidence indicator* was stable in the EU, while it increased by 1 point in the euro area. The coming months will make clear whether this is the beginning of a turnaround or merely an interruption of a continuing downward path.

Looking at the underlying components, similar developments in the EU and the euro area can be observed. Both areas registered a small improvement in the *production expectations* and the assessment of the *stocks of finished products* and in both areas the assessment of the *order books* remained steady.

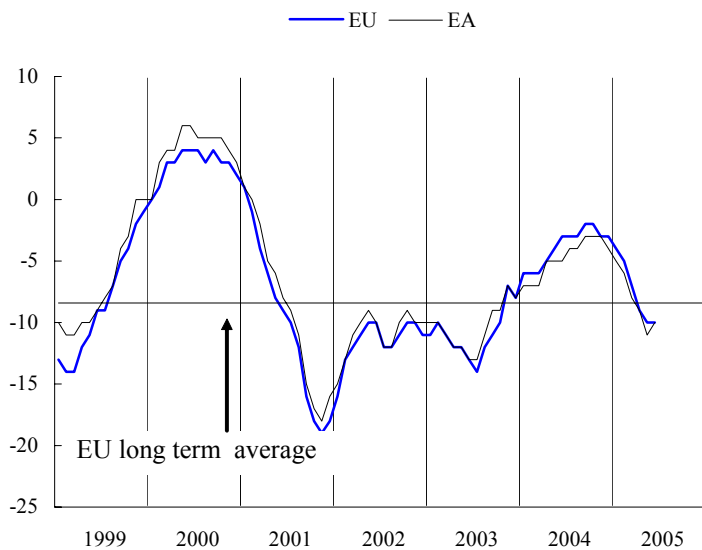
Among the larger Member States, the most significant developments were observed in *France*, where confidence rose by 3 points, and in the *UK*, where confidence fell by another 4 points. The cumulative fall in the UK now amounts to 17 points over the past four months.

According to the semi-annual *industrial investment survey*, which was carried out in the second quarter of 2005, most managers in the industrial sector across the EU expect to increase their investments in 2005 as compared to the volumes realised in 2004. In particular, real investment is expected to grow by 3 % in the EU and by 1 %

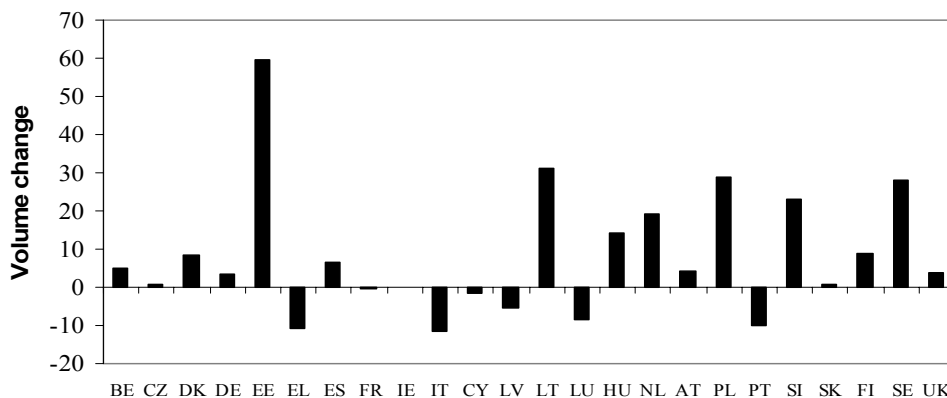
in the euro area. Especially in *Sweden* and the *Netherlands*, investment expectations are very positive. Overall 16 Member States expect an increase in real investment, while only 6 foresee a decline.

At the sector level, expectations are also broadly positive. With the exception of the consumer goods sector, survey respondents in all the other industrial sectors expect positive growth in real investments.

GRAPH 2a: Industrial confidence indicator



GRAPH 2b: Investment expectations



Services confidence slightly down again

Confidence in the services sector resumed its deterioration in June. In both the EU and the euro area the indicator fell by 1 point. The indicator started to fall in February of this year, reversing only briefly in May. However, given the strong volatility of the indicator throughout the last one and a half years and the small changes observed in comparison with previous years, it is still difficult to discern a clear tendency in the indicator.

The fall of services confidence can mainly be attributed to a much more negative assessment of the *evolution of demand in recent months*. The assessment of the *current business situation* worsened slightly in the EU and remained stable in the euro area. While *expected demand* showed a considerable improvement in the EU, this was not enough to offset the negative developments in the other factors.

At the country level, no major changes were registered for the larger Member States, except for *Italy*, where confidence fell by an astounding 11 points. Services sector managers in *Germany* and *France* were slightly more optimistic than in the previous month, while in *Spain*, *Poland* and the *UK* confidence was slightly down.

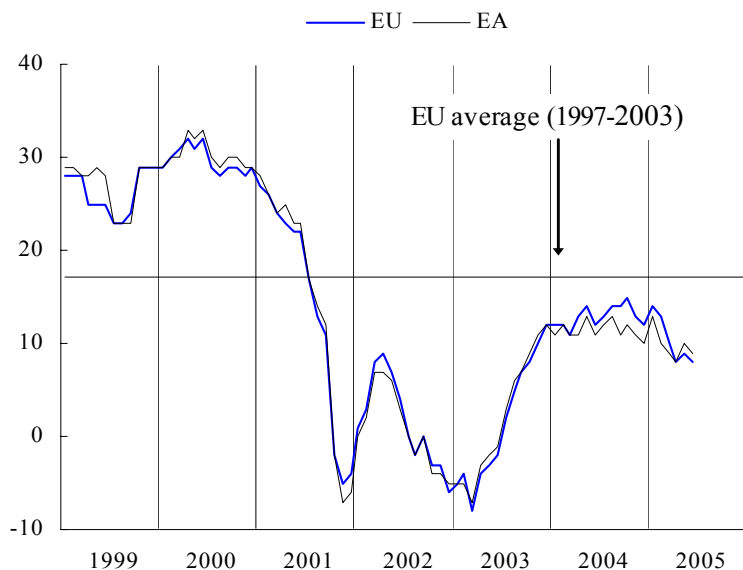
Consumer confidence unchanged in both the EU and the euro area

Consumer confidence continued to be fairly stable. There was no change in the indicator in June, neither for the EU nor for the euro area. Since the beginning of last year the indicator has been fluctuating within a small band of -10 and -13 for the EU and of -13 and -15 for the euro area.

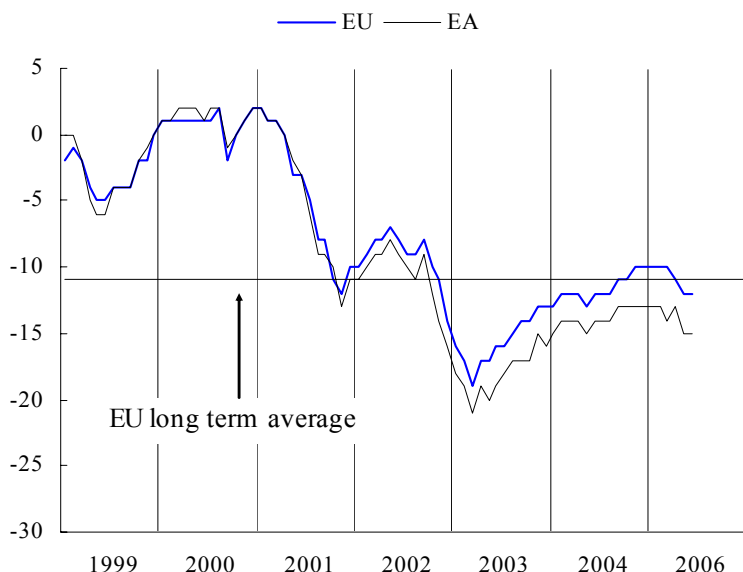
The stability of the confidence indicator is also reflected in the developments of the underlying factors. Only *unemployment expectations* worsened slightly, while consumer opinions concerning the *household's financial situation*, the *general economic situation* and the *household's savings* remained unchanged.

The results at the country level were mixed. *France* reported a considerable increase in consumer confidence. In *Germany*, *Spain*, *Italy* and *Poland* consumer confidence fell slightly, while in the *UK* it remained unchanged.

GRAPH 3: Services confidence indicator



GRAPH 4: Consumer confidence indicator



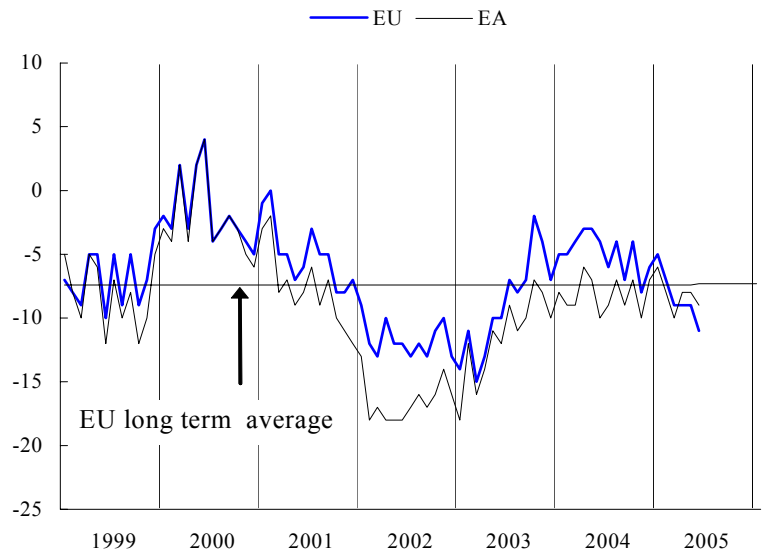
Confidence in retail trade declines in both the EU and the euro area

The *retail trade confidence indicator* fell by 2 points in the EU and by 1 point in the euro area. Notwithstanding the erratic pattern of the indicator, confidence in the EU seems to be on a downward trend since the end of 2003. For the euro area, where the pattern has been equally erratic over the past one and a half years, it is difficult to discern a trend.

As for the underlying components, the developments in the EU and the euro area were fairly similar. In both areas managers experienced a significant deterioration in their *present business situation*, and they were much more negative in their assessment of the *volume of stocks*. Compared to the previous month, retailers' views on the *expected business situation* did not change in the EU, while they improved slightly in the euro area.

Developments were less uniform at the country level. Among the larger Member States, *Spain, Italy* and the *UK* saw a strong fall in confidence, while retailers in *France* became slightly more negative. *German* and *Polish* retail managers were slightly more confident than they were in May.

GRAPH 5: Retail confidence indicator



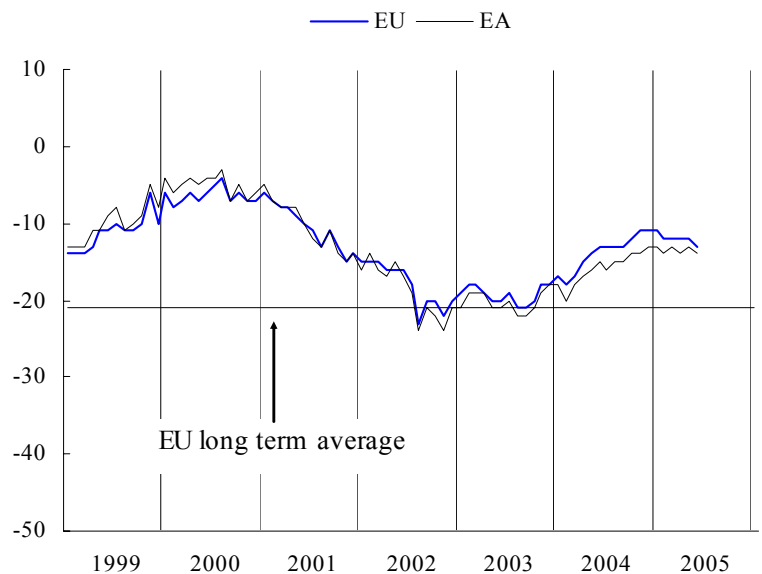
Construction confidence slightly down in both the EU and the euro area

The *construction confidence indicator* fell by 1 point in both the EU and the euro area. Notwithstanding this small change, the indicator has been practically stable since the last quarter of 2004.

As for the components, a slightly more negative assessment of *order books* in the EU just outweighed a small improvement with regard to *employment expectations*. The euro area recorded no change in the *employment expectations* and a small fall in the assessment of the *order books*.

Among the large member states, only *Germany* saw an improvement of its construction confidence indicator. Although the German indicator has improved for the fourth month in a row, it still remains far below its historical average.

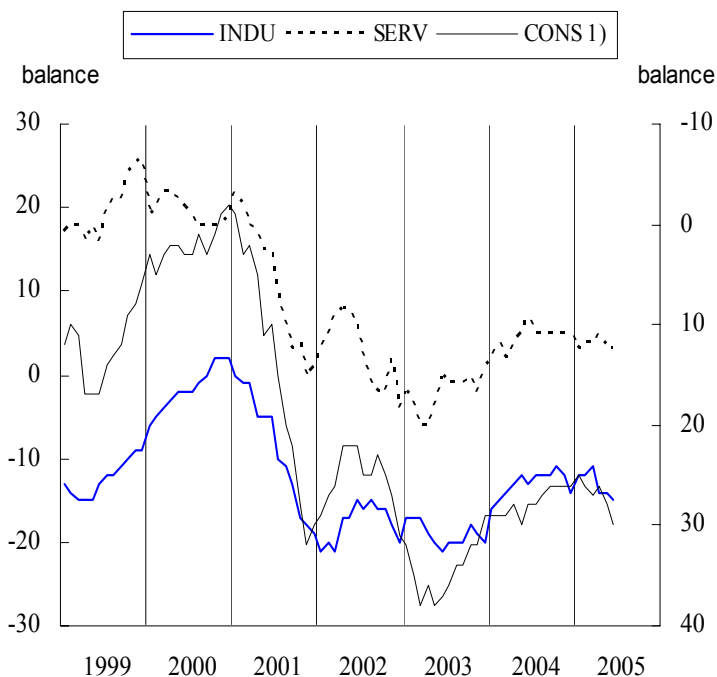
GRAPH 6: Construction confidence indicator



Employment, unemployment and price expectations in the EU

According to managers in the service sector, *employment* prospects did not change in June, while managers in the industry saw a slight worsening of these prospects. Consumers were also more pessimistic with regard to future *unemployment*. Regarding *price expectations* nothing much changed compared with the situation in May. Managers in both industry and the construction sector expect a small downward pressure on the prices. The expectation of consumers did not change.

GRAPH 7: Employment and unemployment



1) Unemployment expectations (Right Hand Scale)

GRAPH 8: Price expectations

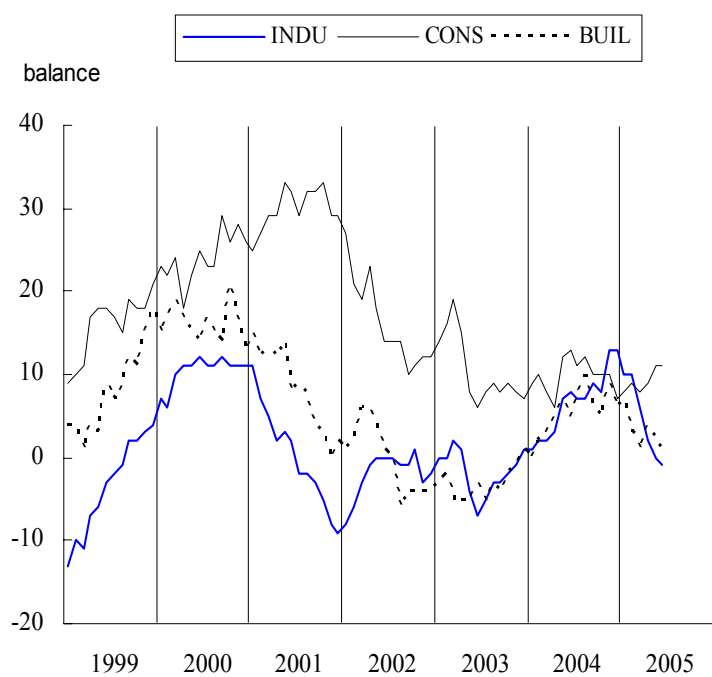


TABLE 1*: Indicators of confidence and economic sentiment(s.a.)		Since 01/1990 ⁽¹⁾																
							2004						2005					
		Min.	Ave.	Max.			July	Aug.	Sep.	Oct.	Nov.	Dec.	Jan.	Feb.	Mar.	Apr.	May	June
Value	Date	Value	Date	Value	Date													
EU	1. Industry	-28	07-93	-8	7	12-94	-3	-3	-2	-2	-3	-3	-4	-5	-7	-9	-10	-10
	2. Services	-8	03-03	17	32	08-98	13	14	14	15	13	12	14	13	10	8	9	8
	3. Consumer	-27	03-93	-11	2	12-00	-12	-12	-11	-11	-10	-10	-10	-10	-10	-11	-12	-12
	4. Retail trade	-19	12-92	-7	4	07-90	-6	-4	-7	-4	-8	-6	-5	-7	-9	-9	-9	-11
	5. Construction	-42	10-93	-21	3	02-90	-13	-13	-13	-12	-11	-11	-11	-12	-12	-12	-12	-13
	=6. ESI	76.6	07-93	100.0	116.4	05-00	102.6	103.8	103.8	104.6	103.6	103.1	103.2	102.1	99.7	98.0	97.3	97.0
Euro area	1. Industry	-31	06-93	-8	6	05-00	-4	-4	-3	-3	-3	-4	-5	-6	-8	-9	-11	-10
	2. Services	-7	03-03	18	34	08-98	12	13	11	12	11	10	13	10	9	8	10	9
	3. Consumer	-29	07-93	-12	2	04-00	-14	-14	-13	-13	-13	-13	-13	-13	-14	-13	-15	-15
	4. Retail trade	-21	03-93	-9	8	08-90	-9	-7	-9	-7	-10	-7	-6	-8	-10	-8	-8	-9
	5. Construction	-44	08-96	-21	4	02-90	-16	-15	-15	-14	-14	-13	-13	-14	-13	-14	-13	-14
	=6. ESI	75.8	07-93	100.0	116.1	05-00	100.0	100.9	100.9	101.5	100.9	100.2	100.8	98.8	97.5	96.5	96.1	96.3
BE	1. Industry	-33	04-93	-11	5	06-00	3	-1	0	0	-2	-5	-3	-6	-7	-11	-13	-13
	2. Services	-7	03-03	13	33	03-98	18	8	15	17	10	11	15	14	11	12	3	9
	3. Consumer	-27	08-93	-6	17	12-00	-4	-2	-2	-2	-4	-4	-6	-3	-1	-4	-11	-11
	4. Retail trade	-25	05-93	-6	13	04-00	-5	-3	1	-1	-3	-2	1	-2	-10	-4	-10	-7
	5. Construction	-35	11-95	-12	10	02-90	-9	-9	-5	-5	-4	-9	-6	-6	-4	-6	-5	-6
	=6. ESI	77.0	04-93	100.0	120.2	06-00	111.2	106.1	109.7	110.0	106.3	105.1	107.5	106.6	104.3	101.3	95.6	98.6
CZ	1. Industry	-31	03-99	-1	27	06-00	9	10	10	12	12	11	7	8	7	5	4	5
	2. Services	32	06-05	40	47	07-02	40	43	41	39	36	39	37	39	38	37	37	32
	3. Consumer	-36	03-98	-15	1	04-01	-10	-10	-12	-11	-10	-5	-4	-5	-2	-6	-3	-2
	4. Retail trade	-1	02-99	14	26	08-02	20	15	25	25	23	17	17	20	19	14	15	16
	5. Construction	-64	06-99	-18	3	06-95	-5	-5	-10	-9	-5	1	3	-4	-7	-9	-8	-10
	=6. ESI	69.6	03-99	100.0	117.6	04-01	108.4	110.6	108.3	108.2	105.0	108.2	104.7	107.5	106.5	102.0	103.2	98.5
DK	1. Industry	-26	12-98	-2	16	09-94	11	6	3	3	-3	2	3	1	1	-5	0	-2
	2. Services	11	10-01	26	37	04-04	28	28	30	34	33	37	34	33	34	33	34	32
	3. Consumer	-11	10-90	6	17	02-95	11	11	13	11	13	14	14	16	17	14	14	14
	4. Retail trade	-6	10-01	17	37	11-94	20	24	24	28	26	29	28	28	31	29	28	25
	5. Construction	-37	12-91	-9	19	03-98	-6	-5	-2	-2	2	4	2	4	3	5	8	6
	=6. ESI	74.5	12-98	100.0	121.2	09-94	113.4	110.6	110.6	113.1	110.8	115.7	114.5	113.8	114.7	109.3	113.5	110.3
DE	1. Industry	-35	04-93	-11	11	09-90	-9	-8	-7	-6	-6	-6	-6	-9	-11	-13	-13	-13
	2. Services	-23	12-02	25	52	03-99	12	13	12	11	11	8	11	6	5	4	6	7
	3. Consumer	-28	10-93	-11	6	05-00	-17	-18	-15	-18	-17	-16	-12	-15	-18	-15	-14	-15
	4. Retail trade	-44	01-03	-18	21	02-91	-27	-23	-28	-23	-27	-19	-17	-22	-30	-25	-23	-22
	5. Construction	-62	11-02	-36	3	01-91	-49	-53	-52	-54	-53	-55	-50	-55	-51	-50	-47	-45
	=6. ESI	80.5	07-93	100.0	120.2	09-90	95.4	96.5	97.0	97.1	97.1	96.8	98.4	95.5	93.7	93.4	93.7	93.7
EE	1. Industry	-31	07-92	4	19	03-01	10	10	12	7	5	6	12	15	17	13	15	11
	2. Services	5	11-04	22	34	11-02	22	20	17	14	5	11	13	17	20	23	23	27
	3. Consumer	-56	04-93	-24	0	03-03	-14	-14	-11	-11	-7	-11	-12	-10	-5	-8	-8	-6
	4. Retail trade	-1	04-03	17	30	04-04	18	20	18	21	20	14	18	20	22	25	22	22
	5. Construction	-46	12-99	2	33	05-05	9	11	13	14	16	23	24	28	31	32	33	30
	=6. ESI	70.6	07-92	100.0	115.7	01-03	105.4	105.0	105.4	100.7	95.0	98.6	102.3	105.8	110.5	110.2	111.0	113.2
EL	1. Industry	-12	09-90	1	13	03-00	0	-1	-3	-4	-4	-4	-3	-4	-7	-4	-9	-10
	2. Services	-14	04-03	27	62	08-00	24	16	7	13	11	6	20	18	23	22	16	11
	3. Consumer	-44	07-03	-30	-6	04-00	-26	-28	-26	-25	-27	-28	-32	-32	-33	-35	-31	-36
	4. Retail trade	-24	06-95	1	27	03-04	15	16	18	14	9	8	13	5	9	10	4	2
	5. Construction	-53	03-05	-11	33	04-00	-24	-35	-45	-37	-47	-49	-44	-48	-53	-48	-31	-38
	=6. ESI	78.9	09-90	100.0	128.1	07-00	101.8	97.4	93.8	94.6	92.2	91.5	94.2	92.3	90.0	91.4	86.5	83.3
ES	1. Industry	-44	01-93	-9	7	04-00	-3	-3	-2	-2	-1	-4	-1	-5	-4	-6	-7	-8
	2. Services	10	10-04	31	56	06-98	16	16	17	10	13	16	15	12	14	17	27	25
	3. Consumer	-37	10-92	-11	6	03-00	-11	-11	-13	-11	-10	-9	-9	-10	-10	-11	-11	-12
	4. Retail trade	-36	02-93	-7	10	06-00	-6	-9	-10	-11	-11	-10	-10	-12	-7	-2	-1	-6
	5. Construction	-57	10-92	-3	42	01-99	5	25	18	26	22	24	17	26	28	20	15	10
	=6. ESI	69.9	01-93	100.0	116.7	04-00	97.3	97.3	98.2	95.4	97.4	97.7	98.4	95.3	97.6	97.7	100.8	98.7
FR	1. Industry	-41	06-93	-8	15	06-00	-2	-2	-1	-1	-3	-1	-5	-5	-9	-10	-12	-9
	2. Services	-22	06-93	3	25	06-90	10	9	9	12	10	11	11	9	8	6	7	9
	3. Consumer	-34	08-93	-18	4	01-01	-15	-13	-11	-11	-13	-13	-17	-14	-14	-17	-21	-17
	4. Retail trade	-37	04-97	-16	6	10-04	-2	0	1	6	-1	1	-2	-3	0	1	-3	-5
	5. Construction	-60	03-93	-17	34	10-00	1	3	6	5	7	8	11	11	11	8	7	6
	=6. ESI	75.1	06-93	100.0	119.1	04-00	107.6	108.4	109.7	110.5	108.4	109.4	105.9	106.2	104.8	102.3	101.1	104.0
IE	1. Industry	-23	11-01	-2	21	11-99	1	-13	-5	-4	-9	-7	-12	1	0	-2	-8	-2
	2. Services	-14	05-03	16	44	08-98	7	4	-12	-4	-10	4	-2	-9	-4	9	-2	-12
	3. Consumer	-31	03-93	-4	19	01-00	3	3	6	9	2	8	7	4	7	1	-1	1
	4. Retail trade	-21	05-03	3	24	06-00	2	0	-3	1	-7	-1	-4	-8	-3	-11	-8	-1
	5. Construction	-54	09-02	10	58	06-97	36	39	36	33	28	27	13	12	27	29	15	45
	=6. ESI	79.2	06-93	100.0	122.4	11-99	103.0	93.2	95.0	96.5	90.9	95.8	91.7	96.1	98.2	98.6	91.1	95.1
IT	1. Industry	-22	04-93	-4	13	07-95	-1	-1	0	1	-1	-2	-2	-6	-7	-7	-9	-8
	2. Services	-5	11-01	17	44	02-98	15	17	11	17	13	10	19	13	16	12	10	-1
	3. Consumer	-38	04-93	-13	2	06-01	-20	-20	-20	-18	-14	-16	-16	-18	-18	-16	-17	-19
	4. Retail trade	-19	10-96	8	39	10-95	11	15	9	6	7	5	10	14	12	3	13	6
	5. Construction	-68	10-93	-13	21	05-90	13	3	2	2	5	4	6	2	-5	-3	-1	-5
	=6. ESI	73.0	04-93	100.0	118.9	02-95	99.8	100.2	99.2	102.1	101.2	97.6	100.3	96.6	96.3	96.0	95.6	92.7
CY	1. Industry	-9	04-03	3	13	04-02	10	10	5	8	1	10	4	3	6	3	5	0
	2. Services	-21	09-02	4	19	06-05	12	7	14	17	12	11	11	13	18	15	7	19

TABLE 1* (continued) : Indicators of confidence and economic sentiment (s.a.)

		Since 01/1990 ^(*)				2004						2005							
		Min.		Ave.		Max.		July	Aug.	Sep.	Oct.	Nov.	Dec.	Jan.	Feb.	Mar.	Apr.	May	June
		Value	Date	Value	Date	Value	Date												
LT	1. Industry	-37	11-98	-15	1	07-04	1	-5	-3	-1	-3	-12	-9	-7	-3	-4	-8	-2	
	2. Services	9	04-05	17	30	03-03	21	20	22	18	10	20	16	12	12	9	16	16	
	3. Consumer	-32	05-01	-14	-1	10-04	-7	-7	-3	-1	-2	-3	-5	-3	-5	-1	-4	-3	
	4. Retail trade	-25	09-00	-5	26	06-04	11	9	11	13	11	11	5	10	-5	-1	3	7	
	5. Construction	-76	09-00	-42	-2	03-05	-21	-21	-12	-11	-9	-11	-10	-5	-2	-22	-11	-4	
	=6. ESI	74.8	11-98	100.0	124.6	10-04	123.4	118.5	124.3	124.6	117.0	118.0	115.0	115.0	115.6	115.9	115.6	121.4	
LU	1. Industry	-35	05-92	-10	26	04-95	14	18	17	8	-1	-7	-1	-6	2	-9	-18	-17	
	2. Services	:	:	:	:	:	:	:	:	:	:	:	:	:	:	:	:	:	
	3. Consumer	-3	06-03	4	14	02-02	2	3	4	4	7	8	6	2	4	3	2	-2	
	4. Retail trade	:	:	:	:	:	:	:	:	:	:	:	:	:	:	:	:	:	
	5. Construction	-73	03-94	-26	24	03-90	-30	-28	-34	-19	-16	-10	-12	-22	-29	-20	-21	-26	
	=6. ESI	82.9	06-96	100.0	123.1	04-95	110.7	112.3	113.2	107.8	107.2	103.6	105.3	100.5	106.5	99.2	94.1	94.4	
HU	1. Industry	-15	05-99	-3	8	12-97	-5	-2	-3	-5	-11	-5	-7	-12	-12	-14	-14	-12	
	2. Services	-10	10-04	1	14	03-02	3	-6	-5	-10	-9	-7	-6	-1	-5	-8	-4	-8	
	3. Consumer	-58	04-95	-29	0	08-02	-25	-26	-24	-24	-25	-23	-21	-21	-24	-28	-30	-32	
	4. Retail trade	-28	05-05	-7	9	11-97	-10	-12	-14	-19	-23	-24	-20	-20	-28	-24	-28	-25	
	5. Construction	-24	12-04	-8	11	09-98	-11	-8	-10	-16	-20	-24	-19	-20	-17	-17	-17	-21	
	=6. ESI	71.9	04-05	100.0	123.5	04-98	96.7	89.2	89.8	79.7	72.9	82.1	82.7	83.1	75.2	71.9	74.9	72.3	
NL	1. Industry	-12	05-93	-2	6	10-00	-1	-2	-2	-1	-2	-3	-2	-2	-1	-2	-2	-4	
	2. Services	3	06-03	17	35	12-97	5	8	10	8	7	8	7	11	7	10	6	9	
	3. Consumer	-19	07-93	4	31	03-00	-3	1	1	-3	-3	-8	-4	-4	-3	2	-4	-5	
	4. Retail trade	-16	12-03	12	30	10-99	-11	-6	-5	-3	-9	-10	-7	-10	-6	-4	-10	-8	
	5. Construction	-25	05-03	-3	27	12-00	-16	-14	-12	-7	-7	-7	-6	-5	-2	-1	-1	1	
	=6. ESI	79.0	05-93	100.0	117.5	12-97	94.3	95.4	96.5	95.5	94.0	91.4	93.1	94.8	94.7	95.9	94.2	92.4	
AT	1. Industry	-30	06-93	-12	8	03-90	-7	-7	-7	-6	-6	-8	-7	-9	-11	-11	-10	-11	
	2. Services	0	01-02	16	30	03-98	16	19	17	19	16	16	13	12	9	12	10	7	
	3. Consumer	-16	04-96	-1	11	07-00	-1	-2	-3	-1	-3	-3	1	-3	-2	0	-3	-3	
	4. Retail trade	-29	03-03	-13	4	07-00	-12	-14	-8	-14	-18	-12	-15	-14	-10	-9	-15	-14	
	5. Construction	-60	04-96	-30	-13	02-03	-25	-24	-25	-23	-21	-16	-25	-22	-24	-24	-20	-16	
	=6. ESI	71.6	04-96	100.0	119.8	05-00	107.2	107.6	106.9	108.8	105.8	105.7	104.9	101.7	98.5	101.9	99.8	97.9	
PL	1. Industry	-29	10-01	-14	9	09-97	-5	-7	-8	-9	-10	-10	-11	-11	-11	-13	-13	-13	
	2. Services ⁽ⁿ⁾	-8	03-03	1	8	02-05	-4	6	2	3	3	1	7	8	5	8	7	5	
	3. Consumer	-40	08-01	-31	-18	04-05	-26	-21	-25	-24	-22	-19	-20	-19	-18	-18	-21	-23	
	4. Retail trade	-19	01-02	-6	7	07-98	-6	-9	-9	-9	-10	-8	-2	-6	-7	-8	-7	-6	
	5. Construction	-63	12-02	-43	-22	03-98	-37	-37	-38	-32	-33	-39	-29	-32	-30	-29	-29	-31	
	=6. ESI	75.8	02-99	100.0	142.6	02-05	108.7	136.6	123.6	124.6	125.0	124.0	137.1	142.6	136.9	140.9	135.8	129.5	
PT	1. Industry	-28	06-93	-7	7	03-98	-7	-6	-8	-8	-7	-11	-9	-11	-10	-6	-10	-14	
	2. Services	-17	05-03	8	29	06-01	5	7	4	4	12	0	-2	5	-3	-3	1	-4	
	3. Consumer	-49	03-03	-22	-1	07-91	-31	-32	-32	-34	-34	-36	-35	-34	-31	-30	-31	-39	
	4. Retail trade	-27	01-03	-7	4	01-99	-6	-8	-5	-8	-11	-7	-7	-10	-7	-7	-10	-13	
	5. Construction	-56	02-03	-26	-1	12-97	-44	-40	-41	-38	-34	-32	-33	-40	-34	-39	-34	-42	
	=6. ESI	73.9	06-93	100.0	113.6	05-97	94.9	95.8	97.4	94.1	97.9	92.2	90.2	92.0	91.2	95.1	93.2	86.7	
SI	1. Industry	-21	03-99	-3	18	06-00	4	5	6	6	3	1	0	-2	0	-3	-3	-2	
	2. Services	12	05-05	24	32	10-02	23	25	22	21	23	22	21	21	14	12	12	15	
	3. Consumer	-29	06-99	-19	-9	10-04	-18	-15	-17	-9	-14	-18	-20	-13	-15	-13	-13	-18	
	4. Retail trade	3	01-01	11	23	04-99	11	13	10	12	13	14	13	10	8	14	14	13	
	5. Construction	-33	06-02	-8	6	01-05	2	2	4	-1	-1	-1	6	2	2	-2	-4	-7	
	=6. ESI	76.8	03-99	100.0	131.3	06-00	105.1	112.7	105.6	111.6	106.9	103.9	100.8	102.0	92.1	92.6	92.2	91.5	
SK	1. Industry	-22	12-95	5	26	05-96	2	11	15	11	13	2	9	13	12	11	6	8	
	2. Services	33	03-05	48	60	06-03	50	47	50	44	51	52	34	38	33	37	33	33	
	3. Consumer	-50	08-99	-31	-9	06-05	-22	-22	-25	-25	-16	-12	-13	-13	-13	-10	-12	-9	
	4. Retail trade	-17	10-93	8	34	11-98	10	-2	5	0	3	-7	8	5	12	15	12	20	
	5. Construction	-86	07-99	-28	18	03-97	-18	-15	-14	-13	-23	-20	-12	-17	-13	-11	-11	-9	
	=6. ESI	71.2	03-99	100.0	125.5	05-96	103.5	106.3	107.6	102.8	113.2	111.7	100.4	105.4	99.5	104.8	98.2	102.5	
FI	1. Industry	-24	01-93	2	30	10-94	11	10	8	5	5	5	3	4	6	-3	-2	10	
	2. Services	-12	09-03	25	61	09-00	18	16	23	31	31	30	38	33	32	25	34	38	
	3. Consumer	6	11-01	15	23	02-00	12	17	15	14	14	16	13	16	17	14	14	10	
	4. Retail trade	-17	11-00	-4	10	05-04	2	-4	-3	1	-6	4	-1	-8	-4	-1	1	6	
	5. Construction	-97	09-91	-18	48	06-98	0	2	-1	0	-4	4	-7	12	16	21	13	14	
	=6. ESI	74.6	04-91	100.0	120.7	11-94	106.5	105.7	106.7	106.4	105.5	106.6	106.4	105.8	107.1	101.4	104.9	110.5	
SE	1. Industry	-29	10-01	-5	15	05-00	8	4	8	5	4	4	6	0	-7	-9	-7	-10	
	2. Services	-24	01-03	16	46	12-00	28	26	30	38	29	23	35	30	32	31	27	32	
	3. Consumer	-10	09-96	7	25	03-00	4	6	6	8	7	10	8	8	7	6	5	3	
	4. Retail trade	-8	09-01	6	27	04-00	0	6	1	0	-3	0	0	2	0	1	-2	3	
	5. Construction	-83	12-93	-38	25	01-01	-9	-18	-6	-1	4	14	10	3	-3	6	6	15	
	=6. ESI	79.0	10-01	100.0	127.1	03-00	111.6	110.8	113.2	115.2	111.2	110.0	113.8	110.0	107.0	105.1	104.4	105.4	
UK	1. Industry	-40	02-91	-11	11	02-95	-4	2	-1	0	-4	-3	-4	0	-5	-10	-13	-17	
	2. Services	-20	12-02	14	37	10-97	16	19	27	25	19	19	10	24	3	-1	1	-1	
	3. Consumer	-28	10-92	-8	7	10-97	-3	-4	-3	-2	0	0	0	0	3	0	-3	-3	
	4. Retail trade	-28	06-05	-4	20	06-04	5	5	-3	4	0	-3	-5	-9	-13	-19	-22	-28	
	5. Construction	-79	06-91	-20	5	08-04	4	5	3	-3	1	-1	-2	-3	-2	-7	-10	-12	
	=6. ESI	71.1	02-91	100.0	118.4	12-97	108.0	110.9	111.8	112.6	110.3	111.2	108.0	113.5	104.7	100.0	97.8	94.8	

In the tables: (s.a.) = seasonally adjusted, (n) = not seasonally adjusted, : = not available.

(*) Minimum, maximum and averages are calculated over the period of availability which is not necessarily 01/1990.

The economic sentiment indicator is composed of the industrial confidence indicator (40%), the service confidence indicator (30%), the consumer confidence indicator (20%), the construction confidence indicator (5%), and the retail trade confidence indicator (5%). Its long term average (1990-2003) equals 100.

The reported ESI average is based on this standardisation sample. All confidence indicators are balances.

Source: unless stated otherwise: European Commission business and consumer surveys.

TABLE 2: Monthly survey of manufacturing industry (s.a.)^(a)

		Since 01/1990						2004						2005					
		Min.		Ave.		Max.		July	Aug.	Sep.	Oct.	Nov.	Dec.	Jan.	Feb.	Mar.	Apr.	May	June
		Value	Date	Value	Date	Value	Date												
INDUSTRIAL CONFIDENCE INDICATOR	EU	-28	07-93	-8	7	12-94	-3	-3	-2	-2	-3	-3	-4	-5	-7	-9	-10	-10	
	Euro area	-31	06-93	-8	6	05-00	-4	-4	-3	-3	-3	-4	-5	-6	-8	-9	-11	-10	
	BE	-33	04-93	-11	5	06-00	3	-1	0	0	-2	-5	-3	-6	-7	-11	-13	-13	
	CZ	-31	03-99	-1	27	06-00	9	10	10	12	12	11	7	8	7	5	4	5	
	DK	-26	12-98	-2	16	09-94	11	6	3	3	-3	2	3	1	1	-5	0	-2	
	DE	-35	04-93	-11	11	09-90	-9	-8	-7	-6	-6	-6	-6	-9	-11	-13	-13	-13	
	EE	-31	07-92	4	19	03-01	10	10	12	7	5	6	12	15	17	13	15	11	
	EL	-12	09-90	1	13	03-00	0	-1	-3	-4	-4	-4	-3	-4	-7	-4	-9	-10	
	ES	-44	01-93	-9	7	04-00	-3	-3	-2	-2	-1	-4	-1	-5	-4	-6	-7	-8	
	FR	-41	06-93	-8	15	06-00	-2	-2	-1	-1	-3	-1	-5	-5	-9	-10	-12	-9	
	IE	-23	11-01	-2	21	11-99	1	-13	-5	-4	-9	-7	-12	1	0	-2	-8	-2	
	IT	-22	04-93	-4	13	07-95	-1	-1	0	1	-1	-2	-2	-6	-7	-7	-9	-8	
	CY	-9	04-03	3	13	04-02	10	10	5	8	1	10	4	3	6	3	5	0	
	LV	-45	04-93	-11	7	05-04	3	3	4	3	3	2	2	3	3	4	5	4	
	LT	-37	11-98	-15	1	07-04	1	-5	-3	-1	-3	-12	-9	-7	-3	-4	-8	-2	
	LU	-35	05-92	-10	26	04-95	14	18	17	8	-1	-7	-1	-6	2	-9	-18	-17	
	HU	-15	05-99	-3	8	12-97	-5	-2	-3	-5	-11	-5	-7	-12	-12	-14	-14	-12	
	NL	-12	05-93	-2	6	10-00	-1	-2	-2	-1	-2	-3	-2	-2	-1	-2	-2	-4	
	AT	-30	06-93	-12	8	03-90	-7	-7	-7	-6	-6	-8	-7	-9	-11	-11	-10	-11	
	PL	-29	10-01	-14	9	09-97	-5	-7	-8	-9	-10	-10	-11	-11	-11	-13	-13	-13	
PT	-28	06-93	-7	7	03-98	-7	-6	-8	-8	-7	-11	-9	-11	-10	-6	-10	-14		
SI	-21	03-99	-3	18	06-00	4	5	6	6	3	1	0	-2	0	-3	-3	-2		
SK	-22	12-95	5	26	05-96	2	11	15	11	13	2	9	13	12	11	6	8		
FI	-24	01-93	2	30	10-94	11	10	8	5	5	5	3	4	6	-3	-2	10		
SE	-29	10-01	-5	15	05-00	8	4	8	5	5	4	6	0	-7	-9	-7	-10		
UK	-40	02-91	-11	11	02-95	-4	2	-1	0	-4	-3	-4	0	-5	-10	-13	-17		
PRODUCTION EXPECTATIONS	EU	-16	11-92	6	23	12-94	10	11	13	13	12	10	9	9	7	5	4	5	
	Euro area	-18	12-92	5	21	12-94	8	8	11	11	10	9	7	6	6	4	3	4	
Component of the industrial confidence indicator	BE	-36	04-93	-3	16	12-94	9	8	7	8	6	2	0	0	3	3	-1	-4	
	CZ	-26	05-93	22	61	05-95	22	21	30	34	33	28	19	22	24	22	26	31	
	DK	-23	12-98	10	30	02-98	21	17	9	11	10	16	14	10	17	4	12	7	
	DE	-26	11-92	1	20	12-94	3	3	6	7	5	2	2	2	0	-2	-3	-1	
	EE	-70	04-92	19	68	03-02	19	20	17	20	13	19	24	37	38	25	32	22	
	EL	3	02-91	26	44	02-00	18	16	14	20	20	23	22	23	19	22	14	19	
	ES	-19	01-93	5	17	12-00	6	3	13	8	12	7	9	3	9	12	9	5	
	FR	-30	07-93	6	27	10-00	11	12	14	11	11	16	9	9	7	3	3	8	
	IE	-22	11-01	9	35	11-99	12	-2	-10	1	-4	3	-10	24	1	7	-3	4	
	IT	-12	12-92	14	31	12-94	12	18	17	19	18	16	14	14	10	11	9	7	
	CY	1	05-02	13	34	12-04	14	17	15	14	17	34	9	5	19	10	23	4	
	LV	-21	04-93	15	41	03-02	18	20	21	19	21	21	18	19	19	19	23	20	
	LT	-22	04-94	11	35	08-97	21	21	21	19	22	8	6	6	16	26	10	19	
	LU	-42	10-91	-4	28	04-95	27	24	23	15	6	-2	16	14	15	0	-10	5	
	HU	-10	06-05	13	34	12-97	1	10	12	2	-5	7	6	-3	-6	-6	-8	-10	
	NL	-4	04-93	6	15	11-99	3	-1	4	5	5	2	2	5	8	6	6	4	
	AT	-19	06-93	4	18	11-03	7	10	9	13	11	6	9	6	11	9	11	8	
	PL	-4	10-01	20	44	02-03	24	26	20	21	17	17	16	17	17	16	16	16	
	PT	-11	03-93	5	21	01-97	1	0	2	0	4	0	-5	-3	0	10	1	-5	
	SI	10	10-01	23	42	06-00	28	39	40	38	24	28	30	26	29	24	28	24	
SK	-12	12-95	31	62	12-97	4	38	53	43	46	6	15	38	36	37	27	26		
FI	-26	06-91	13	44	07-04	44	33	34	28	35	28	27	20	30	14	10	32		
SE	-19	05-91	15	46	05-00	35	28	37	29	30	35	38	23	9	12	18	15		
UK	-38	02-91	5	33	02-95	7	18	14	18	13	3	8	16	9	5	0	-4		
ORDER BOOKS	EU	-50	07-93	-20	1	02-95	-12	-12	-12	-11	-13	-11	-12	-15	-17	-20	-22	-22	
	Euro area	-55	07-93	-19	5	06-00	-12	-13	-12	-11	-12	-12	-11	-15	-17	-19	-21	-21	
Component of the industrial confidence indicator	BE	-51	05-93	-20	11	06-00	-4	-9	-7	-6	-9	-11	-9	-18	-17	-23	-26	-28	
	CZ	-50	12-98	-7	30	01-01	5	5	5	5	4	5	3	3	-3	-3	-6	-6	
	DK	-41	04-99	-6	32	12-94	10	6	6	4	-10	-2	2	-3	-5	-7	-8	-6	
	DE	-61	07-93	-24	12	07-90	-19	-19	-17	-16	-15	-12	-13	-17	-19	-22	-22	-23	
	EE	-43	10-92	0	29	06-01	1	4	10	-2	1	2	7	5	10	10	6	8	
	EL	-31	06-05	-13	7	05-98	-9	-10	-12	-17	-18	-20	-17	-21	-24	-20	-24	-31	
	ES	-65	01-93	-16	11	07-98	-5	-4	-4	-1	-2	-7	-3	-8	-10	-14	-14	-15	
	FR	-64	06-93	-16	27	06-00	-10	-10	-12	-11	-13	-14	-12	-14	-19	-17	-21	-19	
	IE	-36	06-93	-7	24	12-99	-22	-32	-8	-6	-12	-10	-13	-14	2	-9	-7	-4	
	IT	-47	06-93	-16	13	02-95	-9	-13	-10	-12	-12	-11	-12	-21	-20	-22	-24	-24	
	CY	-39	02-03	-19	-3	10-03	-4	-10	-9	-8	-13	-12	-8	-12	-6	-4	-8	-9	
	LV	-79	07-93	-41	-7	12-03	-16	-15	-14	-17	-17	-19	-18	-16	-14	-13	-15	-13	
	LT	-79	11-98	-43	-9	11-93	-20	-34	-29	-22	-27	-40	-29	-25	-24	-30	-29	-24	
	LU	-64	02-92	-18	34	12-97	9	19	18	11	-4	-7	-12	-20	-11	-16	-23	-37	
	HU	-40	03-03	-19	0	04-98	-15	-15	-15	-15	-20	-20	-24	-28	-23	-33	-31	-29	
	NL	-25	01-93	-8	6	11-00	-4	-3	-6	-5	-6	-6	-4	-4	-5	-8	-7	-9	
	AT	-57	04-96	-25	11	03-90	-23	-24	-23	-21	-22	-23	-25	-27	-32	-31	-27	-30	
	PL	-77	01-02	-58	8	09-97	-41	-47	-42	-45	-43	-46	-47	-48	-47	-50	-54	-53	
	PT	-52	07-93	-19	9	03-98	-13	-10	-32	-19	-19	-29	-15	-21	-24	-26	-26	-31	
	SI	-51	03-99	-19	12	06-00	-10	-13	-7	-9	-7	-11	-14	-19	-14	-18	-19	-15	
SK	-70	03-99	-8	49	09-94	0	-2	-6	-4	0	4	10	5	3	-8	-8	-4		
FI	-70	09-91	-13	40	11-94	0	-1	-2	2	-4	2	1	6	2	0	-4	-2		
SE	-67	03-92	-23	25	12-94	-6	-9	-6	-9	-5	-8	-7	-11	-14	-20	-22	-27		
UK	-62	07-91	-22	11	02-95	-7	0	-4	-4	-13	-5	-13</							

TABLE 2: (continued) Monthly survey of manufacturing industry (s.a.)^(a)

		Since 01/1990						2004						2005					
		Min.		Ave.		Max.		July	Aug.	Sep.	Oct.	Nov.	Dec.	Jan.	Feb.	Mar.	Apr.	May	June
		Value	Date	Value	Date	Value	Date												
STOCKS OF FINISHED PRODUCTS ^(b)	EU	3	12-94	11	23	06-93	8	8	8	8	8	8	9	9	12	13	14	13	
	Euro area	2	11-94	11	24	04-93	8	7	8	7	8	8	9	10	12	13	14	13	
Component of the industrial confidence indicator	BE	-4	02-95	9	26	10-01	-3	1	1	3	2	5	0	1	6	12	11	7	
	CZ	-12	04-00	17	46	08-93	-1	-4	6	2	0	0	3	0	0	5	9	11	
	DK	-7	03-94	10	28	06-99	-1	5	6	6	8	9	5	3	10	11	4	7	
	DE	-9	09-90	10	25	07-93	10	8	9	8	8	9	9	11	13	13	15	14	
	EE	-16	05-92	7	39	06-93	-10	-7	-10	-2	1	2	-5	-2	-4	-5	-5	-4	
	EL	1	06-94	12	22	09-90	8	10	11	13	14	13	13	13	15	16	18	18	
	ES	-1	11-02	15	47	01-93	10	10	16	13	12	11	10	11	12	16	14	15	
	FR	-2	04-00	14	34	06-93	8	8	6	4	6	6	12	10	15	16	18	17	
	IE	-13	12-99	6	23	11-93	-13	6	-4	6	11	12	12	7	2	5	15	5	
	IT	-1	07-95	8	17	10-90	6	8	7	5	7	10	9	10	11	11	11	8	
	CY	-34	09-01	-15	1	11-04	-18	-21	-10	-17	1	-7	-11	-15	-6	-3	-1	-5	
	LV	-12	03-04	8	43	07-93	-6	-4	-5	-5	-4	-5	-6	-5	-4	-5	-7	-4	
	LT	-16	01-95	13	49	01-94	-3	2	2	-1	3	4	3	2	1	7	4	2	
	LU	-22	03-95	8	31	03-02	-6	-10	-10	1	4	11	8	12	0	10	19	18	
	HU	-7	11-03	3	15	12-98	0	1	4	4	7	2	3	4	8	3	2	-2	
	NL	-1	12-94	5	11	06-91	4	2	4	4	5	4	5	5	5	5	4	6	
	AT	4	03-90	14	26	04-96	5	6	7	8	6	6	6	7	12	11	12	11	
	PL	-11	10-94	3	20	02-99	-2	1	2	3	2	2	3	2	3	4	3	1	
	PT	-7	09-04	8	25	06-93	8	8	-7	4	5	3	8	8	6	2	5	6	
	SI	-1	06-00	14	28	02-96	8	10	15	11	8	15	16	14	15	16	17	15	
SK	-27	02-01	9	55	05-94	-2	4	3	6	8	3	-3	4	2	-4	1	0		
FI	-20	04-95	4	31	01-96	11	2	9	14	15	15	18	14	13	23	13	-1		
SE	3	03-00	17	37	11-01	6	7	9	6	10	16	13	12	15	20	17	17		
UK	6	03-04	17	32	11-98	13	13	14	13	12	7	8	8	13	15	17	20		
PRODUCTION TREND OBSERVED IN RECENT MONTHS	EU	-23	01-93	-1	19	01-95	9	7	7	6	3	6	5	4	-1	-4	-3	-2	
	Euro area	-26	04-93	-2	17	01-95	7	4	4	2	0	4	4	2	-3	-5	-4	-4	
BE	-20	02-93	-1	16	05-97	11	3	5	5	-6	-1	4	-4	-1	-4	-6	-10		
CZ	-32	10-98	12	42	11-00	31	21	11	20	22	31	24	20	8	8	11	7		
DK	-21	04-99	10	41	09-94	21	15	13	15	12	-1	2	3	-1	1	8	12		
DE	-32	02-02	-4	22	12-90	6	0	-1	-5	-7	3	-1	-3	-8	-9	-8	-6		
EE	-24	03-99	13	56	06-01	28	28	21	15	12	10	14	9	22	30	27	22		
EL	-5	10-90	14	36	01-00	21	18	14	6	4	5	10	6	7	-3	3	4		
ES	-44	04-93	0	21	04-95	6	11	8	9	-1	3	6	5	2	-6	1	0		
FR	-38	07-93	4	36	01-95	13	11	9	14	14	7	16	15	9	5	4	9		
IE	-25	10-01	6	38	03-00	9	-15	22	-2	6	-17	-4	9	-3	10	6	4		
IT	-36	06-93	-10	14	03-95	-9	-6	-5	-8	-10	-6	-10	-13	-15	-16	-16	-18		
CY	-36	04-03	-10	12	04-05	-4	-3	-27	8	-14	-3	-7	-7	-5	12	1	-6		
LV	-49	04-93	2	29	06-01	9	14	10	7	7	13	10	9	11	13	9	16		
LT	-36	07-94	0	34	04-98	14	12	2	9	11	11	7	7	-6	-16	8	7		
LU	-41	04-92	-2	32	04-95	30	30	27	12	19	21	17	12	-7	-2	-19	-9		
HU	-30	06-99	-1	27	04-98	9	8	2	3	-4	-6	-9	-11	-16	-23	-13	-15		
NL	-12	05-93	3	14	10-97	11	5	1	3	-1	2	3	-2	-1	3	4	-3		
AT	-28	06-93	5	27	03-90	17	13	21	16	16	12	14	7	4	4	6	5		
PL	-18	07-96	0	23	04-04	14	6	6	12	6	8	21	5	-3	-12	-3	2		
PT	-18	01-93	-2	15	08-94	8	-1	-14	-16	-9	-3	1	-5	-10	-18	-5	-12		
SI	-20	02-99	8	39	05-00	13	13	9	12	6	11	7	1	2	8	6	10		
SK	-30	12-96	17	78	12-03	49	27	-5	46	46	69	17	27	24	30	34	34		
FI	-28	06-91	11	53	12-04	13	32	35	34	30	53	27	42	8	13	5	-3		
SE	-28	07-91	9	48	12-94	28	29	31	24	24	18	15	17	13	12	8	6		
UK	-46	06-91	-2	34	03-95	9	19	19	16	7	14	3	13	9	-7	-4	4		
EXPORT ORDER BOOKS	EU	-45	06-93	-20	1	02-95	-9	-10	-10	-10	-11	-11	-12	-12	-15	-19	-20	-21	
	Euro area	-52	06-93	-21	3	06-00	-9	-10	-10	-10	-11	-12	-10	-12	-15	-18	-19	-20	
BE	-56	05-93	-22	7	06-00	-4	-6	-5	-1	-4	-10	-8	-22	-20	-30	-32	-34		
CZ	-41	12-98	-3	26	09-00	3	5	5	4	1	4	1	0	-10	-9	-8	-8		
DK	-39	04-99	-4	25	09-94	12	7	8	2	-8	1	-1	-4	-6	-8	-8	-6		
DE	-60	08-93	-28	0	02-90	-11	-12	-11	-11	-11	-11	-9	-8	-12	-14	-13	-15		
EE	-37	03-99	1	25	03-01	0	-2	10	0	-5	-5	-1	0	-4	3	0	3		
EL	-36	05-03	-15	13	03-95	-11	-14	-18	-21	-21	-24	-17	-18	-19	-21	-20	-27		
ES	-55	01-93	-19	6	05-95	-15	-9	-15	-10	-15	-11	-9	-15	-15	-23	-22	-24		
FR	-65	07-93	-13	36	06-00	-1	-2	-4	-5	-7	-9	-8	-9	-13	-24	-21	-21		
IE	-53	09-93	-7	38	04-00	-34	-42	-20	-3	2	-8	-2	-20	-1	-27	-5	-2		
IT	-43	09-92	-18	19	02-95	-12	-17	-12	-14	-15	-16	-15	-20	-23	-24	-26	-27		
CY	-53	05-03	-27	5	05-05	-13	-14	-10	-11	-13	-22	-19	-34	-4	-18	5	-10		
LV	-59	12-98	-37	-15	12-03	-20	-22	-20	-21	-23	-21	-21	-20	-19	-23	-21	-20		
LT	-65	04-99	-37	-14	06-01	-20	-38	-29	-23	-32	-45	-31	-27	-31	-29	-29	-29		
LU	-75	11-91	-23	45	04-00	-4	6	5	-2	-18	-20	-25	-26	-28	-27	-41	-45		
HU	-44	12-02	-15	7	02-98	-16	-19	-19	-22	-21	-27	-24	-30	-29	-32	-30	-28		
NL	-24	01-93	-6	11	09-00	3	4	-1	-2	-2	-2	1	-1	-3	-3	-6	-8		
AT	-58	04-96	-34	-1	03-90	-32	-31	-35	-34	-31	-34	-35	-37	-39	-41	-39	-39		
PL	-75	05-99	-57	13	07-97	-47	-49	-50	-49	-50	-52	-52	-52	-54	-53	-59	-57		
PT	-59	04-93	-16	22	01-95	-18	-19	-22	-21	-17	-16	-20	-18	-22	-25	-28	-30		
SI	-53	05-99	-16	15	06-00	-6	-5	0	0	-4	-5	-11	-13	-13	-13	-14	-11		
SK	-57	03-99	-9	53	01-94	-17	-21	-5	-5	-4	4	6	7	1	-9	-8	-4		
FI	-43	01-99	-8	42	01-95	-2	-2	-8	-2	-6	1	-3	-2	-6	-3	-7	-6		
SE	-45	12-01	5	45	08-91	8	-1	8	-2	1	1	1	-7	-19	-19	-30	-28		
UK	-55	10-98	-22	19	04-95	-10	-4	-5	-11	-11	-6	-17	-8	-5	-24	-15	-22		

TABLE 2: (continued) **Monthly survey of manufacturing industry (s.a.)** ^(a)

		Since 01/1990						2004						2005					
		Min.		Ave.		Max.		July	Aug.	Sep.	Oct.	Nov.	Dec.	Jan.	Feb.	Mar.	Apr.	May	June
		Value	Date	Value	Date	Value	Date												
EMPLOYMENT EXPECTATIONS	EU	-39	06-93	-15	2	11-00	-12	-12	-12	-11	-12	-14	-12	-12	-11	-14	-14	-14	-15
	Euro area	-42	06-93	-14	4	11-00	-13	-14	-13	-12	-12	-14	-12	-12	-12	-14	-14	-14	-14
	BE	-26	09-93	-9	9	09-00	-4	-5	-8	-8	-11	-10	-10	-8	-10	-12	-14	-14	-16
	CZ	-58	06-99	-26	2	03-01	-6	-5	-4	-5	-4	-3	-5	-7	-7	-8	-10	-8	-8
	DK	-23	06-93	-3	13	03-98	5	0	-1	-4	-6	-9	0	-3	3	-10	-4	-7	-7
	DE	-52	06-93	-18	8	02-90	-18	-18	-14	-15	-14	-18	-17	-17	-21	-21	-19	-19	-18
	EE	-78	04-92	-12	16	03-05	2	3	-1	-5	-1	2	8	11	16	14	13	8	8
	EL	-12	12-04	-2	12	05-02	2	1	1	-7	-2	-12	-8	-6	-3	-11	-9	-9	-9
	ES	-53	06-93	-9	9	03-01	-7	-11	-12	-13	-11	-9	-4	-2	-3	2	-1	-4	-4
	FR	-50	09-93	-17	12	09-00	-18	-19	-20	-15	-19	-20	-17	-18	-12	-23	-21	-19	-19
	IE	-34	12-92	-10	16	09-00	-22	-18	-16	-8	-21	-13	-10	-6	-5	-1	4	-4	-4
	IT	-30	08-96	-4	11	11-00	-3	-5	-3	0	0	-5	-2	-2	-3	-3	-3	-7	-7
	CY	-15	04-02	10	41	10-04	29	7	4	41	11	10	33	11	8	20	10	9	9
	LV	-51	04-93	-9	8	06-05	3	5	6	8	7	5	6	3	4	5	7	8	8
	LT	-59	04-94	-28	4	03-03	-3	-3	-1	-5	-2	-11	-12	-5	2	1	-10	-6	-6
	LU	-55	12-91	-27	1	09-01	-14	-15	-13	-23	-20	-16	-20	-19	-26	-16	-31	-23	-23
	HU	-60	12-91	-17	10	10-97	-13	-7	-6	-12	-16	-10	-13	-14	-13	-16	-21	-19	-19
	NL	-30	06-93	-8	15	06-90	-7	-11	-10	-12	-9	-11	-9	-9	-10	-11	-12	-10	-10
	AT	-29	01-96	-10	6	09-00	-5	-3	-5	-2	-4	-4	-3	-3	-6	-6	-10	-8	-8
	PL	-55	12-99	-25	-4	03-05	-11	-13	-8	-5	-7	-6	-8	-8	-4	-7	-6	-5	-5
	PT	-35	06-93	-15	-2	02-90	-21	-19	-22	-24	-20	-23	-19	-25	-22	-22	-21	-24	-24
SI	-42	10-95	-23	-10	07-04	-10	-13	-13	-14	-18	-19	-18	-18	-18	-18	-18	-17	-17	
SK	-56	06-99	-24	2	06-96	-22	-18	-13	-13	-12	-18	-12	-14	-16	-18	-17	-15	-15	
FI	-60	06-91	-16	15	12-00	-13	-13	-19	-18	-13	-14	-21	-6	-6	-3	-13	-12	-12	
SE	-51	08-92	-19	23	12-94	-19	-10	-11	-8	-11	-14	-16	-18	-17	-23	-18	-30	-30	
UK	-50	03-91	-20	2	06-97	-8	-3	-5	-11	-13	-12	-12	-12	-8	-12	-16	-21	-21	
SELLING-PRICE EXPECTATIONS	EU	-13	01-99	5	26	02-95	7	7	9	8	13	13	10	10	6	2	0	-1	
	Euro area	-11	12-98	5	25	02-95	6	5	8	8	12	13	9	9	5	1	1	-1	
	BE	-18	02-96	2	26	12-94	10	6	14	16	15	13	14	4	2	0	-6	-9	
	CZ	-6	12-98	21	71	03-95	21	16	13	20	19	10	11	10	11	5	2	-1	
	DK	-12	11-01	-1	12	11-04	8	3	1	4	12	8	10	0	2	-2	-1	-3	
	DE	-8	12-93	6	23	02-95	7	8	9	9	12	15	15	11	6	2	-2	-1	
	EE	-28	03-99	16	86	04-92	26	19	21	20	22	26	22	19	12	14	16	14	
	EL	-4	01-99	17	41	10-90	12	12	11	11	11	9	9	10	9	7	8	5	
	ES	-18	04-93	3	35	04-95	4	3	4	5	12	15	8	7	7	-4	1	2	
	FR	-26	01-99	0	24	02-90	-4	-2	1	0	12	13	0	7	3	-1	0	-4	
	IE	-25	11-92	-3	29	11-03	4	5	11	-2	1	-4	-5	2	-1	-8	12	-1	
	IT	-10	12-98	11	40	03-95	11	9	14	14	15	15	11	11	7	9	7	4	
	CY	-9	10-01	6	38	10-03	7	9	5	-5	7	6	3	-2	5	7	3	-2	
	LV	-17	12-98	16	50	07-94	21	18	19	24	24	28	24	19	17	17	15	18	
	LT	-20	01-00	15	75	11-93	9	6	-2	-4	-5	-7	-8	1	7	7	-3	4	
	LU	-50	08-91	-2	53	12-94	13	17	12	26	31	22	10	3	13	3	-3	-5	
	HU	14	05-05	29	51	01-01	30	28	29	31	31	24	23	24	16	16	14	15	
	NL	-7	01-99	4	20	12-94	12	6	8	13	10	9	11	1	1	-4	-1	-2	
	AT	-23	03-96	-1	17	03-90	5	3	9	11	10	9	6	2	-1	0	-3	-2	
	PL	-6	06-02	14	46	01-93	20	17	13	12	1	-1	3	4	-4	-3	-4	-2	
	PT	-9	05-03	8	29	10-90	3	4	4	2	-2	0	-7	3	1	-2	-5	-4	
SI	-24	04-99	-8	5	01-01	-2	-1	3	4	3	1	0	0	-3	-8	-10	-8		
SK	-33	03-01	31	81	04-95	26	20	9	16	6	20	-12	0	28	12	3	1		
FI	-34	03-96	2	49	08-94	4	13	13	5	14	14	17	31	15	4	3	2		
SE	-20	11-96	5	37	12-94	15	22	16	17	20	19	21	13	1	2	-2	1		
UK	-30	01-99	0	29	02-95	7	12	9	3	15	13	15	16	15	5	-1	-1		

(a) The indicator is the arithmetic average of the balances (%) of the questions on production expectations, order-books and stocks (the last with inverted sign).

(b) Highest figure is considered as minimum, lowest figure is considered as maximum.

TABLE 3: Monthly survey of services (s.a.)^(a)

		Since 01/1990						2004					2005						
		Min.		Ave.		Max.		July	Aug.	Sep.	Oct.	Nov.	Dec.	Jan.	Feb.	Mar.	Apr.	May	June
		Value	Date	Value	Date	Value	Date												
SERVICES CONFIDENCE INDICATOR	EU	-8	03-03	17	32	08-98	13	14	14	15	13	12	14	13	10	8	9	8	
	Euro area	-7	03-03	18	34	08-98	12	13	11	12	11	10	13	10	9	8	10	9	
	BE	-7	03-03	13	33	03-98	18	8	15	17	10	11	15	14	11	12	3	9	
	CZ	32	06-05	40	47	07-02	40	43	41	39	36	39	37	39	38	37	37	32	
	DK	11	10-01	26	37	04-04	28	28	30	34	33	37	34	33	34	33	34	32	
	DE	-23	12-02	25	52	03-99	12	13	12	11	11	8	11	6	5	4	6	7	
	EE	5	11-04	22	34	11-02	22	20	17	14	5	11	13	17	20	23	23	27	
	EL	-14	04-03	27	62	08-00	24	16	7	13	11	6	20	18	23	22	16	11	
	ES	10	10-04	31	56	06-98	16	16	17	10	13	16	15	12	14	17	27	25	
	FR	-22	06-93	3	25	06-90	10	9	9	12	10	11	11	9	8	6	7	9	
	IE	-14	05-03	16	44	08-98	7	4	-12	-4	-10	4	-2	-9	-4	9	-2	-12	
	IT	-5	11-01	17	44	02-98	15	17	11	17	13	10	19	13	16	12	10	-1	
	CY	-21	09-02	4	19	06-05	12	7	14	17	12	11	11	13	18	15	7	19	
	LV	7	03-02	11	14	03-05	9	10	12	9	12	12	11	12	14	13	12	13	
	LT	9	04-05	17	30	03-03	21	20	22	18	10	20	16	12	12	9	16	16	
	HU	-10	10-04	1	14	03-02	3	-6	-5	-10	-9	-7	-6	-1	-5	-8	-4	-8	
	NL	3	06-03	17	35	12-97	5	8	10	8	7	8	7	11	7	10	6	9	
	AT	0	01-02	16	30	03-98	16	19	17	19	16	16	13	12	9	12	10	7	
	PL⁽ⁿ⁾	-8	03-03	1	8	02-05	-4	6	2	3	3	1	7	8	5	8	7	5	
	PT	-17	05-03	8	29	06-01	5	7	4	4	12	0	-2	5	-3	-3	1	-4	
SI	12	05-05	24	32	10-02	23	25	22	21	23	22	21	21	14	12	12	15		
SK	33	03-05	48	60	06-03	50	47	50	44	51	52	34	38	33	37	33	33		
FI	-12	09-03	25	61	09-00	18	16	23	31	31	30	38	33	32	25	34	38		
SE	-24	01-03	16	46	12-00	28	26	30	38	29	23	35	30	32	31	27	32		
UK	-20	12-02	14	37	10-97	16	19	27	25	19	19	10	24	3	-1	1	-1		
ASSESSMENT OF BUSINESS SITUATION	EU	-19	03-03	14	37	06-00	8	9	7	11	9	9	12	8	0	0	1	0	
	Euro area	-18	03-03	16	39	06-00	8	9	6	9	8	8	12	6	1	1	1	1	
	BE	-27	12-01	-3	28	01-98	3	-2	1	3	-2	-5	0	-5	-2	-6	-16	-9	
	CZ	48	06-05	60	72	07-02	59	57	58	55	55	59	57	60	58	58	60	48	
	DK	4	05-03	23	41	04-00	19	19	25	29	24	29	27	27	28	29	31	30	
	DE	-35	01-03	26	63	12-98	13	16	12	11	11	8	10	5	-1	2	3	7	
	EE	1	11-04	26	48	11-02	27	21	14	12	1	9	14	19	24	27	29	30	
	EL	-42	04-03	11	58	09-00	21	15	7	16	11	0	19	22	28	26	17	9	
	ES	4	10-04	30	67	04-00	10	11	9	4	8	10	9	6	5	8	21	19	
	FR	-35	09-96	-1	29	06-00	10	11	11	14	14	16	13	9	5	2	4	6	
	IE	-20	06-05	19	52	11-99	2	2	-11	-1	-15	11	-4	-10	-7	4	-2	-20	
	IT	-39	06-05	12	44	02-01	0	-12	-17	-3	-11	-3	18	0	-15	-18	-29	-39	
	CY	-33	09-02	-5	16	04-04	4	2	3	13	7	6	8	5	10	5	5	10	
	LV	4	10-04	11	18	04-03	7	9	10	4	6	5	7	8	12	9	9	11	
	LT	2	04-05	22	48	03-03	27	21	23	15	12	12	12	7	5	2	13	12	
	HU	-15	10-04	0	19	05-02	-2	-10	-9	-15	-12	-9	-8	-6	-7	-13	-8	-11	
	NL	-26	07-93	12	70	12-00	1	14	8	8	9	8	18	19	13	13	19	17	
	AT	-4	10-96	12	30	03-98	16	17	15	16	11	12	11	7	6	8	6	2	
	PL⁽ⁿ⁾	-12	02-04	3	9	11-03	-2	5	3	3	3	3	6	6	0	3	3	1	
	PT	-22	06-03	5	24	11-97	2	-2	-5	-7	0	-11	2	-5	-7	-10	-9	-14	
SI	4	04-05	27	44	10-02	25	23	27	17	25	18	20	20	17	4	5	10		
SK	23	01-05	45	66	01-03	53	40	57	37	52	42	23	30	28	34	29	25		
FI	-47	03-03	19	79	05-98	-21	7	-7	20	44	28	17	27	27	24	8	13		
SE	-60	01-02	6	41	01-05	31	21	25	40	37	23	41	37	36	27	31	30		
UK	-35	12-02	-1	27	12-97	1	5	7	16	2	8	2	9	-21	-17	-15	-18		
EVOLUTION OF DEMAND IN RECENT MONTHS	EU	-12	01-02	14	32	03-98	14	14	14	16	13	12	11	10	9	7	12	8	
	Euro area	-16	01-02	14	32	03-98	12	12	9	12	8	8	9	5	7	6	11	8	
	BE	-9	03-03	13	41	11-97	23	1	9	19	3	11	10	15	12	12	8	17	
	CZ	15	08-02	28	39	08-04	30	39	37	36	25	26	25	28	28	25	23	24	
	DK	9	04-03	25	42	12-04	30	29	30	39	39	42	37	36	38	38	37	37	
	DE	-32	02-02	19	43	09-98	12	13	10	9	10	9	9	2	4	2	7	6	
	EE	3	11-04	22	43	11-03	20	17	14	13	3	12	9	16	21	21	22	24	
	EL	-9	04-03	33	71	06-01	18	11	3	7	3	2	16	17	26	26	17	12	
	ES	-1	08-02	24	56	06-98	7	10	8	7	10	15	11	5	5	11	24	19	
	FR	-33	03-97	5	37	01-90	11	10	9	11	7	5	9	6	6	6	7	10	
	IE	-24	10-03	10	46	08-98	5	1	-20	-10	-17	-10	-4	-15	-10	3	-4	-24	
	IT	-28	08-02	12	38	03-01	22	30	15	23	15	13	12	6	16	12	32	11	
	CY	-34	08-02	-1	21	04-04	12	14	14	14	11	11	8	14	9	9	3	20	
	LV	-4	02-02	8	15	02-05	6	8	10	7	11	13	9	15	14	13	10	13	
	LT	0	08-02	17	29	04-03	23	21	22	13	5	18	14	24	16	7	17	18	
	HU	-14	04-05	-2	13	03-02	1	-12	-8	-14	-13	-9	-13	-3	-9	-14	-5	-8	
	NL	-49	03-01	8	50	06-98	-9	-16	-15	-4	-11	-5	-16	-14	2	-14	-24	-21	
	AT	-16	01-02	15	35	03-98	14	20	20	21	18	19	19	15	11	11	9	6	
	PL⁽ⁿ⁾	-18	02-03	-3	6	08-04	-4	6	1	3	2	-1	5	5	3	3	3	2	
	PT	-34	05-03	4	26	06-01	5	9	4	10	14	-6	-5	6	-5	-9	-2	-9	
SI	-1	03-05	18	29	08-04	18	29	16	22	20	15	15	21	-1	3	3	8		
SK	29	06-05	47	67	07-03	42	50	43	46	52	52	35	40	35	36	29	29		
FI	-20	09-03	27	83	04-01	32	22	33	56	22	29	35	36	34	32	43	53		
SE	-19	10-01	17	53	01-01	23	23	33	42	31	21	26	36	33	32	29	33		
UK	-19	07-03	16	43	01-97	21	22	37	34	33	27	11	31	7	0	12	-1		

TABLE 3: (continued) Monthly survey of services (s.a.)^(a)

		Since 01/1990						2004					2005						
		Min.		Ave.		Max.		July	Aug.	Sep.	Oct.	Nov.	Dec.	Jan.	Feb.	Mar.	Apr.	May	June
		Value	Date	Value	Date	Value	Date												
EVOLUTION OF DEMAND	EU	-1	11-01	24	37	06-98	18	19	23	19	19	16	19	20	20	18	15	18	
	Euro area	-6	11-01	23	38	05-00	16	17	20	17	17	14	18	18	19	18	16	17	
EXPECTED IN THE MONTHS AHEAD	BE	-2	07-03	28	51	01-95	29	24	36	28	28	28	34	33	24	30	16	20	
	CZ	24	01-04	32	44	01-03	33	33	29	27	27	30	28	29	27	27	28	25	
	DK	16	09-01	30	41	12-04	34	35	36	35	36	41	37	35	35	33	34	30	
	DE	-22	11-01	29	59	09-00	10	10	13	13	12	6	13	11	12	7	8	8	
Component of the services confidence indicator	EE	7	06-04	19	32	11-02	18	22	24	16	10	13	15	16	16	20	20	29	
	EL	5	05-03	38	75	09-01	34	24	11	15	18	16	23	14	13	15	14	13	
	ES	19	10-04	38	59	06-98	31	28	33	19	20	22	26	25	31	31	37	38	
	FR	-18	09-93	5	32	03-01	9	7	7	11	9	10	11	11	13	9	10	12	
	IE	-7	05-03	19	45	06-98	16	8	-4	-1	3	12	3	-2	6	19	-1	7	
	IT	-6	09-00	25	57	06-01	22	33	35	32	35	20	26	32	47	40	28	26	
	CY	3	06-03	18	34	03-05	20	6	24	24	17	15	16	20	34	30	14	29	
	LV	8	01-03	14	25	02-02	13	14	17	16	19	19	18	13	17	17	18	16	
	LT	-7	10-02	13	30	02-03	13	18	20	25	14	29	23	7	16	17	18	19	
	HU	-3	06-05	5	17	02-02	9	2	4	-1	-1	-3	2	7	0	4	3	-3	
	NL	-4	01-96	26	54	07-00	22	26	36	19	22	20	20	28	6	30	22	30	
	AT	-1	10-01	19	34	06-98	19	20	17	21	17	17	11	12	10	17	14	12	
	PL⁽ⁿ⁾	-10	03-03	2	16	04-05	-7	7	3	3	4	1	9	14	14	16	15	11	
	PT	-16	09-03	15	40	06-01	7	14	13	9	23	18	-4	12	4	11	14	13	
	SI	22	04-03	27	32	12-04	27	24	24	24	26	32	28	23	25	30	28	27	
	SK	35	03-05	52	65	06-03	57	51	48	50	49	62	45	45	35	40	41	46	
	FI	-12	10-96	31	71	01-01	42	19	42	17	27	33	62	36	35	20	51	48	
	SE	-4	01-03	24	66	02-01	30	36	30	31	20	25	37	18	27	34	20	32	
	UK	-14	03-03	28	57	10-97	27	29	38	26	23	22	18	30	23	14	5	17	
EVOLUTION OF EMPLOYMENT IN RECENT MONTHS	EU	-10	03-03	10	26	08-98	0	2	4	5	4	3	-1	2	0	1	2	1	
	Euro area	-8	03-03	12	28	01-99	-1	2	3	3	3	2	-3	-1	0	0	0	0	
	BE	-14	08-02	8	30	08-98	2	-9	2	-1	0	-3	4	0	1	5	-4	5	
	CZ	-30	11-04	-11	18	11-02	-16	-18	-23	-22	-30	1	-6	-27	-20	-8	-20	-21	
	DK	-2	04-03	9	21	04-00	8	12	12	14	15	15	13	13	12	15	15	16	
	DE	-19	12-02	15	44	03-99	-3	-1	-2	-3	-2	-2	-6	-7	-5	-3	-4	0	
	EE	1	06-02	8	16	10-03	11	15	9	6	2	7	8	16	5	11	13	11	
	EL	-42	06-01	8	45	06-00	23	19	14	4	-3	-15	-17	-8	-11	-3	-4	0	
	ES	4	03-03	19	45	08-98	6	12	8	5	6	10	9	11	13	12	12	13	
	FR	-27	06-93	4	23	12-90	-4	2	8	9	6	3	3	-1	2	0	0	0	
	IE	-36	05-05	1	25	02-98	-7	-6	-17	-16	-13	-7	-12	-13	-14	-13	-36	-21	
	IT	-13	05-03	6	25	05-00	6	-1	4	8	13	7	-11	5	1	-1	2	-9	
	CY	-23	06-02	-4	6	02-05	-2	-7	-2	-3	0	1	3	6	5	5	0	4	
	LV	-1	05-02	4	10	06-03	8	8	8	5	7	5	4	4	9	6	5	4	
	LT	-30	11-03	-11	17	11-02	-16	-6	-6	7	-22	16	3	5	-8	-9	2	-4	
	HU	-15	06-05	-6	2	07-04	2	-8	-6	-8	-1	0	-7	-2	-11	-10	-9	-15	
	NL	-8	05-03	17	66	06-98	-1	2	0	-2	3	3	1	-1	-1	4	4	5	
	AT	-7	08-02	6	18	07-98	1	10	8	8	6	7	2	8	5	8	3	2	
	PL⁽ⁿ⁾	-15	02-04	-8	2	04-05	-10	-7	-12	-9	-8	-5	-3	2	-4	2	-1	-1	
	PT	-34	05-03	-1	28	07-98	-4	-6	-13	-19	-13	-24	-19	-18	-15	-15	-5	-5	
	SI	-10	12-03	3	14	05-02	7	13	6	6	3	8	2	7	6	10	8	7	
	SK	-66	12-04	-38	3	07-02	-47	-55	-54	-57	-55	-66	-37	-51	-44	-55	-48	-42	
	FI	-26	04-97	29	91	11-97	-9	45	49	17	9	14	1	25	22	-4	14	15	
	SE	-40	04-03	3	42	01-01	-3	-6	-6	-3	-8	-3	2	-2	4	8	2	14	
	UK	-22	04-03	9	27	05-00	5	1	11	22	11	14	5	18	0	4	11	4	
EVOLUTION OF EMPLOYMENT EXPECTED IN THE MONTHS AHEAD	EU	-6	03-03	10	26	06-98	5	5	5	5	5	5	3	4	4	5	3	3	
	Euro area	-5	04-03	9	25	04-00	2	3	1	1	3	2	1	1	2	4	0	0	
	BE	-11	04-03	16	34	11-99	17	15	18	18	15	14	17	17	15	24	9	11	
	CZ	-31	06-04	-20	-3	08-02	-25	-29	-22	-23	-26	-13	-22	-14	-17	-20	-17	-22	
	DK	4	02-03	11	18	04-05	15	13	16	12	13	13	15	17	14	18	13	11	
	DE	-13	05-03	-4	11	02-01	-5	-3	-5	-3	-1	-4	-3	-3	-1	-3	-4	-4	
	EE	7	03-03	15	26	03-05	19	21	23	20	18	18	18	19	26	24	20	18	
	EL	-33	12-00	10	47	05-99	21	14	7	-4	-8	-12	-6	-14	-18	-5	-3	-3	
	ES	3	05-01	18	41	04-00	11	16	12	6	14	14	15	8	11	15	14	16	
	FR	-31	06-97	1	21	06-98	2	0	4	1	4	2	0	0	5	6	1	4	
	IE	-13	11-04	8	31	04-98	7	2	2	-11	-13	7	-2	-8	3	-10	-5	0	
	IT	-10	06-05	11	34	06-00	2	4	-2	3	2	6	-3	-2	0	5	-2	-10	
	CY	-5	06-05	3	18	05-02	-2	3	5	2	5	4	2	3	1	2	-5	-5	
	LV	-1	05-02	7	13	06-05	8	10	9	9	9	12	10	10	11	12	13	13	
	LT	-51	05-02	-8	25	10-04	-4	9	6	25	1	3	16	16	7	3	4	-3	
	HU	-9	09-03	-2	5	05-04	-3	2	2	0	0	-1	0	1	-2	-5	-4	-8	
	NL	-4	03-05	18	40	01-99	5	6	6	5	10	6	8	9	-4	10	7	9	
	AT	-6	01-04	9	27	09-98	9	12	11	7	8	6	8	5	3	7	5	3	
	PL⁽ⁿ⁾	-13	07-04	-7	0	04-05	-13	-2	-7	-5	-4	-8	-8	-2	-6	0	-4	-3	
	PT	-24	01-03	3	37	08-03	-2	-11	-21	-14	-9	-5	-10	-7	-6	-8	-16	-21	
	SI	-9	08-03	8	21	05-02	12	20	9	11	10	14	16	19	18	21	20	18	
	SK	-67	12-04	-45	-16	05-02	-60	-35	-45	-52	-52	-67	-41	-46	-44	-53	-43	-48	
	FI	-31	11-96	24	82	07-00	24	17	4	3	1	10	-12	24	11	3	3	16	
	SE	-35	11-01	11	62	09-00	-3	-3	-7	9	0	3	8	2	11	11	11	22	
	UK	-17	12-02	18	33	06-98	23	23	28	29	15	22	17	20	13	15	20	16	

TABLE 4: Consumer opinion on economic and financial conditions (s.a.)^{(a)(b)}

		Since 01/1990						2004					2005						
		Min.		Ave.		Max.		July	Aug.	Sep.	Oct.	Nov.	Dec.	Jan.	Feb.	Mar.	Apr.	May	June
		Value	Date	Value	Date	Value	Date												
CONSUMER CONFIDENCE INDICATOR	EU	-27	03-93	-11	2	12-00	-12	-12	-11	-11	-10	-10	-10	-10	-10	-11	-12	-12	
	Euro area	-29	07-93	-12	2	04-00	-14	-14	-13	-13	-13	-13	-13	-13	-14	-13	-15	-15	
	BE	-27	08-93	-6	17	12-00	-4	-2	-2	-2	-4	-4	-6	-3	-1	-4	-11	-11	
	CZ	-36	03-98	-15	1	04-01	-10	-10	-12	-11	-10	-5	-4	-5	-2	-6	-3	-2	
	DK	-11	10-90	6	17	02-95	11	11	13	11	13	14	14	16	17	14	14	14	
	DE	-28	10-93	-11	6	05-00	-17	-18	-15	-18	-17	-16	-12	-15	-18	-15	-14	-15	
	EE	-56	04-93	-24	0	03-03	-14	-14	-11	-11	-7	-11	-12	-10	-5	-8	-8	-6	
	EL	-44	07-03	-30	-6	04-00	-26	-28	-26	-25	-27	-28	-32	-32	-33	-35	-31	-36	
	ES	-37	10-92	-11	6	03-00	-11	-11	-13	-11	-10	-9	-9	-10	-10	-11	-11	-12	
	FR	-34	08-93	-18	4	01-01	-15	-13	-11	-11	-13	-13	-17	-14	-14	-17	-21	-17	
	IE	-31	03-93	-4	19	01-00	3	3	6	9	2	8	7	4	7	1	-1	1	
	IT	-38	04-93	-13	2	06-01	-20	-20	-20	-18	-14	-16	-16	-18	-18	-16	-17	-19	
	CY	-43	07-04	-28	-13	06-01	-43	-39	-36	-34	-38	-41	-34	-36	-35	-38	-35	-39	
	LV	-45	02-93	-25	-7	09-01	-14	-13	-18	-19	-19	-18	-16	-12	-11	-14	-12	-14	
	LT	-32	05-01	-14	-1	10-04	-7	-7	-3	-1	-2	-3	-5	-3	-5	-1	-4	-3	
	LU	-3	06-03	4	14	02-02	2	3	4	4	7	8	6	2	4	3	2	-2	
	HU	-58	04-95	-29	0	08-02	-25	-26	-24	-24	-25	-23	-21	-21	-24	-28	-30	-32	
	NL	-19	07-93	4	31	03-00	-3	1	1	-3	-3	-8	-4	-4	-3	2	4	-5	
	AT	-16	04-96	-1	11	07-00	-1	-2	-3	-1	-3	-3	1	-3	-2	0	-3	-3	
	PL	-40	08-01	-31	-18	04-05	-26	-21	-25	-24	-22	-19	-20	-19	-18	-18	-21	-23	
	PT	-49	03-03	-22	-1	07-91	-31	-32	-32	-34	-34	-36	-35	-34	-31	-30	-31	-39	
SI	-29	06-99	-19	-9	10-04	-18	-15	-17	-9	-14	-18	-20	-13	-15	-13	-13	-18		
SK	-50	08-99	-31	-9	06-05	-22	-22	-25	-25	-16	-12	-13	-13	-13	-10	-12	-9		
FI	6	11-01	15	23	02-00	12	17	15	14	14	16	13	16	17	14	14	10		
SE	-10	09-96	7	25	03-00	4	6	6	8	7	10	8	8	7	6	5	3		
UK	-28	10-92	-8	7	10-97	-3	-4	-3	-2	0	0	0	0	3	0	-3	-3		
FINANCIAL SITUATION OF HOUSEHOLDS OVER NEXT 12 MONTHS	EU	-10	12-93	-1	5	04-01	-2	-2	-1	-1	-1	0	0	0	0	-1	-1		
	Euro area	-11	07-93	-2	5	03-00	-4	-4	-3	-4	-4	-3	-3	-2	-3	-4	-4		
	BE	-9	12-93	2	13	08-00	5	6	5	8	5	6	5	7	6	4	3	3	
	CZ	-32	02-98	-10	2	05-02	-7	-10	-13	-9	-6	-4	-4	-3	-3	-6	-2	-3	
	DK	2	12-90	12	39	10-00	15	15	14	11	14	14	15	15	17	15	15		
	DE	-15	02-94	-5	4	05-00	-8	-8	-7	-8	-6	-5	-2	-3	-4	-4	-6	-6	
	Component of the consumer confidence indicator	EE	-38	04-93	-11	11	01-03	-7	-6	-3	-2	3	-2	-3	-2	3	1	2	4
		EL	-31	08-92	-15	10	04-00	-11	-8	-8	-10	-14	-13	-17	-17	-19	-20	-17	-22
		ES	-16	10-92	1	10	10-99	-1	-1	-2	-1	-1	2	0	-1	-1	-2	-1	-2
		FR	-12	12-95	-1	6	01-01	-2	-1	1	0	-2	-1	-3	-2	-1	-2	-3	-2
		IE	-13	02-93	1	16	01-00	0	2	2	6	0	4	4	2	4	-1	-1	1
		IT	-15	04-93	-1	7	07-01	-4	-5	-4	-4	-3	-3	-4	-4	-4	-2	-2	-3
		CY	-35	06-04	-14	0	06-01	-35	-30	-26	-23	-26	-28	-24	-27	-25	-30	-27	-25
		LV	-29	09-93	-8	9	08-02	2	1	1	-2	-2	-3	2	3	6	4	6	2
		LT	-10	10-01	-1	7	06-05	3	3	6	7	6	5	2	3	4	6	2	7
		LU	3	06-05	6	12	06-02	4	5	5	5	7	6	6	4	9	3	7	3
		HU	-63	04-95	-22	16	08-02	-14	-14	-12	-10	-12	-12	-7	-7	-10	-13	-16	-18
		NL	-11	12-04	4	16	12-99	-2	1	-2	-5	-5	-11	-5	-5	-6	-2	-5	-7
		AT	-18	04-96	-4	4	04-99	-3	-7	-4	-4	-9	-5	-1	-1	-2	-2	-3	-3
		PL	-20	08-01	-11	-3	04-05	-12	-7	-7	-7	-6	-3	-5	-3	-3	-3	-5	-8
		PT	-26	03-03	-7	11	01-92	-13	-16	-15	-15	-16	-17	-16	-18	-15	-15	-14	-21
SI		-30	06-99	-11	-2	11-96	-12	-12	-10	-2	-7	-4	-7	-4	-6	-4	-4	-10	
SK		-44	08-99	-25	-7	06-05	-24	-24	-24	-23	-12	-10	-11	-8	-10	-8	-9	-7	
FI		-8	04-93	6	13	10-04	11	11	12	13	12	12	10	13	11	11	11	10	
SE		-13	09-96	7	18	07-02	12	11	13	14	13	16	15	12	16	12	14	14	
UK		-23	03-90	2	16	09-02	8	7	7	9	10	8	10	10	11	10	10	9	
GENERAL ECONOMIC SITUATION OVER NEXT 12 MONTHS		EU	-32	03-93	-12	1	04-00	-14	-14	-12	-12	-12	-12	-11	-10	-12	-15	-15	
	Euro area	-35	03-93	-13	4	04-00	-14	-14	-12	-13	-14	-13	-13	-13	-13	-14	-17	-17	
	BE	-46	07-93	-11	20	06-00	-2	4	3	-1	-3	-2	-5	-1	2	-5	-16	-18	
	CZ	-40	09-97	-12	8	10-95	-8	-7	-11	-9	-10	-2	2	2	2	0	1	3	
	DK	-23	02-99	-2	23	07-01	2	6	5	7	7	6	6	10	13	5	6	6	
	DE	-41	03-93	-16	6	02-99	-22	-24	-21	-23	-22	-20	-16	-19	-23	-21	-20	-21	
	Component of the consumer confidence indicator	EE	-38	04-93	-4	25	03-03	2	4	8	8	10	6	8	11	11	7	8	5
		EL	-37	12-03	-16	17	01-00	-15	-16	-9	-11	-16	-15	-20	-21	-19	-24	-20	-29
		ES	-38	10-92	-5	11	08-97	-2	-7	-6	-5	-6	-2	-2	-4	-5	-7	-9	-9
		FR	-37	01-91	-17	5	01-01	-14	-11	-7	-11	-15	-14	-18	-15	-10	-17	-26	-15
		IE	-33	12-02	-2	22	01-00	2	0	6	11	2	7	6	0	6	-3	-3	-5
		IT	-40	04-93	-9	13	02-95	-18	-18	-16	-11	-6	-10	-11	-12	-12	-10	-14	-20
		CY	-45	06-04	-22	-7	05-01	-43	-37	-31	-28	-34	-41	-32	-31	-33	-38	-35	-31
		LV	-27	06-95	-7	11	05-03	4	3	2	-2	-5	-4	0	6	9	3	5	0
		LT	-18	05-01	2	16	10-04	6	8	14	16	13	12	9	10	8	11	9	8
		LU	-23	02-03	-6	7	02-02	-6	-6	-5	-2	0	-1	1	-5	0	-4	-7	-20
		HU	-53	04-95	-15	19	08-02	-9	-12	-7	-8	-10	-8	-5	-5	-8	-13	-16	-18
		NL	-42	03-93	-8	26	03-00	0	0	-3	-6	-9	-16	-13	-6	-4	4	-6	-11
		AT	-26	04-96	-6	8	11-99	1	-5	-8	-6	-7	-8	-2	-6	-4	-4	-8	-7
		PL	-35	08-01	-23	-5	04-05	-24	-15	-15	-17	-16	-10	-10	-7	-7	-5	-11	-12
		PT	-52	03-03	-16	12	01-92	-25	-23	-23	-27	-27	-30	-29	-24	-18	-17	-18	-35
SI		-21	02-04	-9	7	10-04	-13	-9	-9	7	-2	-3	-5	0	-4	4	1	-5	
SK		-51	09-99	-31	-2	06-05	-20	-19	-24	-21	-12	-6	-8	-6	-3	-3	-6	-2	
FI		-24	04-91	6	28	01-95	6	9	6	5	4	6	3	5	8	4	0	-5	
SE		-30	09-96	1	20	03-00	-3	2	1	3	3	3	0	1	-1	-3	-5	-6	
UK		-33	03-90	-9	14	06-97	-14	-16	-14	-12	-9	-7	-11	-5	-2	-6	-		

TABLE 4 (continued):

Consumer opinion on economic and financial conditions (s.a.)^(a)

		Since 01/1990						2004				2005							
		Min.		Ave.		Max.		July	Aug.	Sep.	Oct.	Nov.	Dec.	Jan.	Feb.	Mar.	Apr.	May	June
		Value	Date	Value	Date	Value	Date												
SAVINGS	EU	-15	08-93	-4	4	04-01	-5	-4	-4	-4	-2	-3	-3	-4	-4	-4	-3	-3	
OVER NEXT	Euro area	-14	08-93	-5	4	03-01	-9	-7	-7	-8	-5	-6	-7	-8	-9	-8	-7	-7	
12 MONTHS	BE	-2	12-93	13	31	06-98	12	12	16	15	13	17	15	16	16	17	13	14	
	CZ	-16	03-98	-4	11	08-03	4	5	-1	-1	2	2	6	2	5	0	-1	4	
Component of the consumer confidence indicator	DK	-3	01-90	22	39	04-05	31	29	36	36	35	36	37	37	38	39	38	39	
	DE	-5	03-03	7	23	08-90	-2	2	2	1	3	4	5	5	0	2	1	-1	
	EE	-69	10-93	-50	-11	08-01	-40	-41	-40	-40	-36	-39	-37	-36	-28	-32	-33	-29	
	EL	-57	07-95	-44	-23	01-00	-37	-37	-42	-37	-38	-44	-47	-47	-45	-48	-48	-47	
	ES	-34	01-90	-19	0	07-00	-31	-25	-29	-25	-24	-23	-25	-24	-20	-23	-22	-25	
	FR	-36	03-96	-23	-7	04-04	-11	-10	-9	-8	-9	-12	-16	-15	-14	-18	-15	-14	
	IE	-32	03-93	-1	28	02-02	16	18	19	21	15	19	21	20	21	19	17	20	
	IT	-39	10-04	-16	2	03-91	-37	-38	-38	-39	-29	-32	-30	-35	-36	-29	-24	-21	
	CY	-55	06-02	-41	-13	06-01	-50	-47	-42	-47	-46	-45	-38	-43	-38	-42	-33	-49	
	LV	-90	03-96	-56	13	01-94	-50	-44	-59	-52	-54	-53	-52	-50	-50	-52	-48	-50	
	LT	-55	05-01	-47	-35	04-05	-42	-46	-41	-41	-42	-39	-42	-40	-43	-35	-42	-42	
	LU	40	05-05	47	55	04-02	49	48	53	45	53	52	46	46	44	46	40	53	
	HU	-70	11-95	-53	-19	01-00	-47	-46	-45	-46	-47	-45	-45	-45	-44	-47	-48	-50	
	NL	22	03-05	38	55	10-99	32	32	32	29	28	26	32	24	22	25	24	29	
	AT	-11	11-00	32	55	03-02	27	30	30	30	35	31	33	27	27	29	29	29	
	PL	-67	09-03	-51	-22	09-01	-49	-46	-61	-53	-50	-52	-52	-50	-49	-50	-49	-48	
	PT	-51	06-05	-34	-14	01-92	-47	-48	-46	-50	-50	-50	-50	-51	-51	-49	-48	-51	
	SI	-52	06-99	-29	-15	06-03	-23	-20	-23	-24	-25	-26	-25	-25	-18	-22	-20	-25	
	SK	-70	08-01	-42	-29	08-00	-42	-35	-44	-46	-38	-35	-36	-37	-41	-34	-35	-32	
	FI	19	01-96	37	53	05-04	46	53	53	48	52	52	46	50	51	49	53	50	
SE	11	06-98	29	46	06-00	28	27	29	31	30	31	28	30	33	29	26	29		
UK	-26	10-92	-6	17	03-05	12	13	15	14	17	14	15	14	17	17	12	14		
UNEMPLOYMENT	EU	-2	12-00	26	56	03-93	28	27	26	26	26	26	25	26	27	26	28	30	
OVER NEXT	Euro area	-3	01-01	28	60	08-93	30	30	28	29	29	28	30	31	29	31	31	33	
12 MONTHS	BE	-19	12-00	28	63	10-93	31	29	30	31	31	35	37	33	30	32	43	44	
	CZ	4	05-01	36	64	03-99	30	28	23	24	24	17	21	19	14	18	9	13	
Component of the consumer confidence indicator	DK	-19	11-97	8	38	12-92	5	7	5	10	5	2	2	-2	-1	3	3	5	
	DE	-3	01-01	30	58	10-93	37	40	36	41	42	41	34	43	44	37	31	35	
	EE	5	06-05	35	82	10-92	11	12	9	11	7	9	14	14	6	6	7	5	
	EL	24	04-90	44	62	12-98	44	50	43	42	42	40	43	43	47	47	40	46	
	ES	-8	03-00	18	67	01-93	10	11	15	15	9	12	8	10	12	11	13	13	
	FR	-14	01-01	31	64	03-03	35	32	29	26	25	26	32	25	32	32	40	38	
	IE	-29	12-99	15	58	04-92	5	8	4	2	8	-1	4	7	4	11	17	12	
	IT	-2	06-01	27	70	04-93	20	18	20	16	18	20	19	21	22	22	26	32	
	CY	26	05-01	36	50	06-05	43	43	43	39	44	48	41	42	46	43	46	50	
	LV	6	02-05	28	54	01-93	13	11	15	19	17	14	13	6	8	12	9	8	
	LT	-17	06-05	11	46	05-01	-6	-8	-10	-13	-15	-11	-12	-14	-11	-13	-15	-17	
	LU	14	02-02	34	45	06-03	39	36	36	33	31	27	27	37	36	33	31	42	
	HU	-3	07-98	27	59	02-93	31	31	32	32	30	27	26	27	33	36	40	44	
	NL	-35	07-98	18	77	03-93	41	29	23	31	26	32	28	28	25	19	29	33	
	AT	-9	11-00	27	49	12-96	30	27	30	26	31	28	27	32	29	24	30	29	
	PL	12	01-05	39	64	05-01	20	16	16	20	18	12	12	15	14	21	24		
	PT	-10	08-97	32	73	10-93	40	42	42	44	46	46	46	43	40	40	42	48	
	SI	7	09-01	26	43	02-04	25	21	26	17	21	38	40	24	31	28	29	31	
	SK	-4	01-05	27	68	08-99	3	12	9	9	4	-2	-4	-1	-1	-3	-3	-4	
	FI	-31	01-95	-1	42	07-91	13	4	13	11	10	5	7	3	3	7	9	14	
SE	-26	03-00	7	39	11-01	22	17	19	16	17	11	10	10	18	13	17	24		
UK	-11	04-98	21	53	02-91	20	21	21	19	18	15	16	17	16	21	23	22		
FINANCIAL	EU	-19	01-94	-10	-2	05-00	-13	-11	-12	-11	-11	-11	-11	-11	-11	-11	-12	-12	
SITUATION	Euro area	-20	02-03	-10	-1	05-90	-16	-14	-14	-13	-14	-14	-14	-14	-14	-14	-15	-15	
OF HOUSEHOLDS	BE	-16	12-93	-5	4	11-00	-7	-4	-5	-7	-3	-4	-5	-4	-5	-8	-4		
OVER LAST	CZ	-30	02-98	-15	-5	05-96	-14	-16	-17	-17	-16	-13	-13	-10	-15	-11	-8		
12 MONTHS	DK	-5	04-01	6	16	02-05	12	13	12	11	12	14	13	16	14	10	10		
	DE	-31	12-02	-12	4	05-90	-19	-14	-12	-13	-12	-12	-11	-11	-11	-12	-13		
	EE	-54	04-93	-18	3	03-05	-8	-8	-8	-6	-2	-4	-1	-1	3	0	1		
	EL	-43	01-93	-28	-6	04-00	-26	-26	-23	-25	-27	-30	-30	-29	-28	-28	-34		
	ES	-28	01-94	-8	4	04-00	-9	-10	-11	-8	-8	-7	-8	-9	-11	-10	-9		
	FR	-18	06-96	-9	-2	01-01	-11	-11	-12	-9	-10	-11	-12	-11	-13	-12	-14		
	IE	-25	02-93	-7	11	04-00	-5	-5	-6	-4	-6	-2	-1	-2	0	-6	-5		
	IT	-30	02-04	-14	-1	05-90	-23	-24	-22	-21	-25	-25	-24	-23	-23	-23	-27		
	CY	-34	07-04	-16	-5	07-03	-34	-27	-26	-24	-26	-26	-23	-24	-25	-29	-27		
	LV	-57	01-93	-23	-3	05-05	-7	-8	-10	-10	-11	-13	-8	-6	-5	-7	-8		
	LT	-29	06-01	-14	0	06-05	-7	-7	-7	-1	-4	-4	-4	-2	-3	-1	0		
	LU	-2	02-04	2	8	01-02	0	-1	-1	-1	2	3	2	0	-1	4	1		
	HU	-65	11-95	-36	0	08-02	-28	-27	-27	-28	-24	-26	-25	-26	-22	-26	-30		
	NL	-25	03-05	1	17	02-00	-16	-16	-20	-19	-20	-21	-21	-23	-25	-23	-18		
	AT	-23	11-02	-13	-2	08-99	-20	-18	-20	-18	-18	-20	-18	-17	-14	-16	-16		
	PL	-35	08-01	-25	-13	05-05	-23	-16	-21	-19	-18	-18	-16	-17	-15	-13	-18		
	PT	-29	04-03	-13	3	01-92	-19	-20	-19	-19	-19	-20	-21	-21	-19	-20	-22		
	SI	-36	06-99	-27	-14	05-05	-27	-25	-22	-24	-27	-25	-17	-19	-20	-17	-18		
	SK	-43	10-99	-29	-12	06-05	-29	-30	-30	-28	-23	-20	-21	-17	-16	-16	-12		
	FI	-22	04-93	0	9	04-05	7	7	6	6	6	8	7	6					

TABLE 4 (continued):

Consumer opinion on economic and financial conditions (s.a.)^(a)

		Since 01/1990			2004								2005					
		Min.		Ave.	Max.		July	Aug.	Sep.	Oct.	Nov.	Dec.	Jan.	Feb.	Mar.	Apr.	May	June
		Value	Date	Value	Date													
GENERAL	EU	-55	03-93	-27	-4	05-00	-32	-31	-31	-30	-32	-30	-29	-28	-29	-30	-31	-34
ECONOMIC	Euro area	-58	07-93	-28	-2	05-00	-37	-35	-34	-34	-36	-34	-34	-33	-34	-36	-37	-40
SITUATION	BE	-61	08-93	-25	22	12-00	-23	-15	-19	-21	-19	-19	-20	-14	-11	-17	-29	-37
OVER LAST	CZ	-54	12-97	-21	3	10-95	-27	-20	-23	-22	-19	-17	-11	-11	-7	-10	-7	-3
12 MONTHS	DK	-25	04-93	0	22	09-95	9	8	9	9	10	15	14	16	19	16	15	15
	DE	-60	05-03	-27	12	01-90	-42	-40	-39	-40	-41	-37	-33	-34	-39	-40	-37	-42
	EE	-72	10-92	-12	20	01-03	3	4	6	8	8	7	11	7	12	5	8	8
	EL	-50	05-90	-31	6	05-00	-30	-26	-22	-25	-30	-31	-33	-33	-30	-30	-28	-38
	ES	-61	08-93	-16	13	03-00	-15	-18	-16	-16	-16	-12	-13	-15	-16	-18	-16	-18
	FR	-57	10-96	-35	-1	01-01	-40	-38	-36	-34	-36	-36	-39	-37	-37	-40	-42	-38
	IE	-59	03-93	-5	42	08-99	-3	-8	-1	2	-2	5	7	4	7	-1	-2	-3
	IT	-74	04-93	-38	-8	05-90	-51	-48	-46	-44	-50	-48	-48	-46	-47	-51	-55	-61
	CY	-41	07-04	-26	-13	01-02	-41	-34	-30	-34	-34	-39	-32	-31	-32	-38	-37	-30
	LV	-59	01-93	-25	3	12-03	-4	-3	11	-12	-13	-15	-11	-6	-6	-11	-6	-13
	LT	-41	05-01	-11	6	10-04	1	1	4	6	4	4	3	4	3	5	2	4
	LU	-36	06-03	-23	-2	01-02	-25	-26	-26	-19	-14	-16	-11	-20	-16	-20	-15	-23
	HU	-71	04-95	-32	6	09-02	-24	-26	-25	-26	-26	-26	-22	-24	-22	-28	-32	-33
	NL	-73	03-03	-13	45	03-00	-40	-39	-37	-40	-41	-45	-44	-40	-35	-30	-32	-37
	AT	-50	02-97	-24	8	07-00	-25	-27	-28	-24	-22	-28	-22	-28	-25	-22	-24	-26
	PL	-55	09-01	-41	-17	04-05	-36	-32	-33	-31	-30	-24	-22	-21	-20	-17	-20	-22
	PT	-60	03-03	-24	13	10-91	-43	-43	-42	-43	-45	-50	-51	-51	-49	-46	-44	-49
	SI	-39	09-98	-28	-14	04-05	-29	-26	-26	-19	-25	-29	-26	-19	-22	-14	-16	-22
	SK	-69	10-99	-42	-10	06-05	-31	-29	-33	-31	-27	-19	-22	-16	-11	-12	-13	-10
	FI	-65	01-92	-4	30	08-98	3	7	4	5	5	6	4	7	7	2	1	-6
	SE	-25	04-03	-6	25	03-00	-9	-5	-8	-4	-1	-2	1	-2	-4	-6	-6	-9
	UK	-67	11-92	-25	5	10-97	-17	-21	-21	-22	-21	-18	-17	-14	-13	-13	-14	-19
SAVINGS	EU	:	:	:	:	:	:	:	:	:	:	:	:	:	:	:	:	:
AT PRESENT ^(c)	Euro area	:	:	:	:	:	:	:	:	:	:	:	:	:	:	:	:	:
	BE	-45	12-03	44	70	02-01	-20	-20	-21	-22	-26	-25	-27	-24	-29	-28	-10	-16
	CZ	-35	01-03	-15	15	03-01	-13	-16	-16	-17	-20	-21	-19	-19	-18	-20	-20	-21
	DK	51	01-90	65	78	07-92	68	67	72	74	75	74	73	68	71	69	73	73
	DE	29	11-92	45	61	09-02	47	41	44	43	46	46	45	45	42	44	42	45
	EE	-58	09-96	-37	-14	08-01	-28	-35	-24	-29	-24	-29	-29	-27	-23	-23	-27	-23
	EL	-64	10-01	-46	-18	01-00	-57	-56	-61	-54	-54	-58	-61	-64	-61	-60	-60	-62
	ES	-33	12-03	29	59	08-96	-29	-25	-29	-24	-20	-27	-20	-18	-19	-20	-21	-24
	FR	8	11-04	42	61	06-95	13	13	12	12	8	10	15	14	15	17	12	13
	IE	-2	03-93	21	56	12-01	22	25	32	28	27	39	38	35	44	38	34	37
	IT	26	06-04	45	59	06-96	29	34	42	35	38	40	40	46	47	46	46	56
	CY	-37	07-04	-13	9	06-01	-37	-17	-20	-24	-20	-10	-7	-2	9	-7	-4	-11
	LV	-78	12-95	-58	-28	09-01	-50	-48	-59	-50	-52	-54	-49	-50	-49	-53	-53	-55
	LT	-47	05-01	-38	-27	05-02	-35	-39	-35	-34	-39	-36	-37	-41	-40	-40	-44	-43
	LU	45	04-03	53	63	01-03	55	56	59	53	51	55	54	59	59	57	50	58
	HU	-83	11-95	-65	-28	12-00	-53	-52	-51	-52	-53	-58	-54	-51	-54	-52	-54	-57
	NL	47	06-91	61	70	09-96	66	68	65	64	68	70	64	61	62	63	59	64
	AT	17	12-96	41	64	09-02	54	56	55	55	55	56	57	52	51	52	53	51
	PL	-49	09-01	-37	-29	06-01	-35	-35	-36	-40	-34	-31	-38	-35	-30	-34	-33	-33
	PT	-63	02-05	-39	-13	01-92	-56	-60	-58	-61	-62	-63	-61	-63	-62	-63	-60	-63
	SI	-25	09-97	-13	-1	08-04	-2	-1	-6	-6	-2	-4	-7	-9	-5	-3	-1	-7
	SK	-55	10-04	-47	-36	03-00	-51	-51	-53	-55	-49	-49	-50	-50	-46	-47	-48	-47
	FI	-23	04-94	3	22	10-92	11	11	13	14	14	16	14	15	16	18	13	14
	SE	-9	09-01	6	20	01-00	1	0	-1	0	1	3	-2	-1	-1	1	2	3
	UK	-16	03-03	11	36	05-90	21	24	22	25	23	22	25	24	28	28	25	25
MAJOR	EU	-21	07-93	-16	-10	03-00	-19	-18	-18	-18	-18	-17	-17	-17	-17	-16	-18	-17
PURCHASES	Euro area	-21	07-93	-17	-12	03-00	-20	-19	-19	-19	-20	-19	-18	-18	-18	-18	-19	-18
OVER NEXT	BE	-29	10-96	-16	-6	10-03	-11	-11	-14	-10	-16	-17	-14	-14	-14	-16	-14	-14
12 MONTHS	CZ	-36	01-01	-24	-7	05-02	-13	-17	-18	-16	-15	-10	-14	-11	-17	-8	-16	-9
	DK	-14	01-93	-6	1	11-04	-2	-2	-1	1	-2	0	0	0	1	-2	-4	
	DE	-39	02-03	-26	-14	01-90	-35	-33	-33	-33	-33	-30	-30	-30	-29	-31	-30	-29
	EE	-64	10-92	-26	-5	04-03	-18	-22	-24	-16	-13	-9	-10	-12	-15	-11	-16	-14
	EL	-50	11-92	-22	5	06-03	-37	-33	-22	-24	-23	-26	-23	-21	-21	-21	-22	-18
	ES	-48	11-93	-24	-7	11-00	-20	-20	-25	-20	-26	-25	-23	-26	-23	-20	-23	-20
	FR	-6	04-04	0	1	09-99	-5	-5	-5	-4	-5	-5	-3	-4	-5	-4	-5	-5
	IE	-20	05-93	-9	2	12-00	-4	-6	-6	-7	-4	-6	-6	-4	-3	-6	-3	-4
	IT	-23	10-92	-17	-9	04-05	-15	-13	-13	-14	-13	-12	-13	-9	-11	-9	-14	-15
	CY	-5	03-04	13	39	03-03	15	18	15	16	17	17	7	7	-4	2	10	7
	LV	-84	03-96	-43	6	03-05	-5	-4	-4	-4	-6	0	3	-1	6	1	5	4
	LT	-18	12-02	-10	-2	11-04	-2	-2	-3	-5	-2	-5	-6	-9	-5	-6	-4	-3
	LU	-19	06-05	-13	-6	01-02	-13	-9	-16	-14	-14	-16	-11	-12	-12	-12	-18	-19
	HU	-69	06-95	-38	-8	08-02	-27	-27	-25	-25	-22	-26	-23	-22	-22	-24	-29	-28
	NL	-25	03-03	-13	-4	11-98	-15	-20	-17	-18	-18	-18	-17	-17	-20	-17	-22	-17
	AT	-26	11-04	-16	-4	11-00	-24	-19	-19	-22	-26	-21	-22	-22	-19	-21	-21	-16
	PL	-25	09-01	-8	1	09-04	-5	-4	1	-3	-1	-5	-4	-6	-7	-7	-7	-8
	PT	-23	11-95	-8	14	06-90	-11	-10	-11	-13	-12	-11	-9	-14	-15	-13	-16	-14
	SI	-18	03-02	-5	4	04-00	-4	-8	-8	-3	-9	-4	-2	-2	-4	-2	-4	-5
	SK	-41	08-01	-29	-20	08-02	-29	-28										

TABLE 4 (continued):

Consumer opinion on economic and financial conditions (s.a.)^(a)

		Since 01/1990			2004								2005						
		Min.		Ave.	Max.		July	Aug.	Sep.	Oct.	Nov.	Dec.	Jan.	Feb.	Mar.	Apr.	May	June	
		Value	Date	Value	Date														
MAJOR PURCHASES AT PRESENT	EU	-22	07-93	-11	6	01-00	-16	-16	-16	-15	-15	-15	-13	-12	-12	-13	-13	-14	
	Euro area	-28	03-03	-14	6	03-99	-23	-22	-21	-21	-22	-23	-20	-19	-19	-21	-19	-21	
	BE	-40	06-97	-5	26	12-00	10	10	14	16	17	20	18	19	19	20	16	11	
	CZ	-33	05-95	-1	34	07-03	15	10	8	11	4	9	9	14	13	24	20	25	
	DK	-27	01-93	-7	10	09-97	-1	0	-9	-3	-3	0	0	-5	1	-7	-10	-11	
	DE	-31	11-02	-11	6	04-99	-22	-19	-18	-19	-20	-19	-15	-14	-13	-18	-14	-17	
	EE	0	04-01	13	48	04-04	27	24	26	30	31	39	36	37	36	38	38	42	
	EL	-67	01-03	-35	-10	01-01	-44	-49	-38	-41	-45	-49	-46	-45	-37	-44	-45	-59	
	ES	-64	06-93	-17	26	11-99	-29	-27	-28	-31	-27	-30	-20	-22	-19	-22	-22	-23	
	FR	-39	12-95	-14	14	07-00	-10	-11	-12	-9	-11	-13	-14	-9	-11	-9	-12	-15	
	IE	-22	04-92	14	40	09-97	16	19	19	18	20	19	26	21	28	22	26	24	
	IT	-64	11-96	-33	-2	05-90	-50	-50	-50	-47	-48	-51	-49	-53	-51	-53	-44	-41	
	CY	-19	10-01	1	24	11-04	10	2	14	12	24	8	3	-4	-9	-5	1	1	
	LV	-81	06-96	-43	10	09-01	3	2	-7	0	-2	-4	5	1	-1	2	2	2	
	LT	-10	05-01	18	40	04-04	33	30	35	30	33	35	30	33	39	34	36	39	
	LU	-17	06-04	-9	0	06-05	-4	-1	-2	-12	-7	-3	-2	-7	-7	-8	-4	0	
	HU	-87	06-96	-57	-9	10-02	-17	-16	-17	-16	-23	-24	-17	-16	-17	-15	-21	-18	
	NL	-39	04-03	7	54	02-00	-26	-25	-25	-30	-30	-33	-24	-28	-26	-26	-26	-33	
	AT	-14	07-02	8	29	08-99	-8	-7	-9	-10	-6	-3	-6	-7	-6	-5	-3	-2	
	PL	-27	11-01	-10	3	11-03	-8	-7	-12	-8	-8	-7	-2	-7	-4	-2	-2	-1	
	PT	-60	06-05	-32	-2	01-92	-57	-56	-57	-56	-58	-58	-56	-58	-57	-58	-57	-60	
	SI	-50	04-97	-23	10	05-99	-7	-4	-1	-3	-8	-11	-6	-9	-8	-5	-1	-1	
	SK	-25	02-04	-10	4	08-99	-23	-15	-20	-18	-14	-15	-13	-13	-15	-15	-10	-11	
	FI	-27	04-90	17	39	08-03	31	30	28	23	25	21	27	27	26	24	26	24	
	SE	2	11-95	18	33	04-04	20	20	24	25	24	26	28	29	30	29	27	27	
	UK	-22	05-90	8	28	11-02	8	5	3	5	7	13	8	14	12	12	5	6	
	PRICE TRENDS OVER NEXT 12 MONTHS	EU	6	06-03	23	49	01-91	11	12	10	10	10	7	8	9	8	9	11	11
		Euro area	3	04-04	23	51	01-91	8	9	8	7	8	6	8	9	9	10	12	13
		BE	-4	09-02	20	46	10-01	17	12	15	19	18	12	13	14	15	20	17	18
		CZ	11	05-05	46	72	03-98	35	38	34	35	36	29	17	15	18	14	11	15
		DK	-29	08-93	-11	28	08-02	-5	-5	-8	-2	-7	-2	-8	-19	-15	-9	-14	-14
DE		5	12-04	32	58	03-91	14	13	12	11	7	5	8	8	9	9	9	11	
EE		23	04-93	48	88	05-04	58	51	51	41	47	56	56	53	51	56	51	55	
EL		0	03-04	38	60	05-90	16	13	10	23	24	15	17	18	19	17	17	36	
ES		-4	11-98	14	36	01-02	12	17	17	22	18	19	21	16	18	23	28	27	
FR		-13	08-97	11	54	01-91	13	10	8	4	12	8	10	15	13	11	17	15	
IE		6	01-94	22	42	10-00	21	22	20	19	22	11	20	20	15	21	24	23	
IT		-23	12-04	22	62	02-91	-15	-11	-17	-20	-20	-23	-17	-12	-12	-9	-7	-13	
CY		28	09-03	48	68	09-02	43	42	44	44	42	47	39	37	36	45	43	38	
LV		16	03-00	32	70	03-04	49	45	45	46	45	47	41	41	39	45	46	52	
LT		14	02-03	42	75	05-04	63	59	54	51	57	57	54	52	51	48	56	55	
LU		3	06-03	13	26	03-03	12	17	15	18	20	20	11	16	16	15	19	20	
HU		34	07-98	51	65	05-95	54	52	53	51	50	51	49	46	46	49	47	50	
NL		-28	12-02	24	60	01-91	4	1	4	7	10	14	9	12	16	4	8	12	
AT		-19	12-95	14	41	09-01	20	25	24	27	31	21	26	23	21	26	26	29	
PL		7	04-05	32	54	04-04	45	37	33	32	29	26	23	16	16	7	19	21	
PT		-9	08-97	32	56	03-03	30	34	36	40	37	38	36	36	37	36	32	50	
SI		16	01-05	42	62	04-00	27	24	20	19	24	22	16	20	19	19	17	28	
SK		20	05-05	51	78	11-02	47	46	41	40	29	28	27	28	23	26	20	21	
FI		-21	12-95	10	40	09-01	17	22	15	16	13	13	20	19	21	24	20	24	
SE		-14	03-05	13	34	04-03	19	18	20	19	15	6	8	9	-14	3	0	4	
UK		5	03-05	27	57	09-90	15	20	18	14	14	10	5	6	5	7	6	7	
PRICE TRENDS OVER LAST 12 MONTHS		EU	-4	03-99	23	46	01-03	30	29	29	27	30	28	28	29	28	29	27	26
		Euro area	-4	01-99	27	62	01-03	40	38	37	35	38	37	37	38	38	39	37	36
		BE	-1	06-98	34	56	04-05	50	47	48	51	54	52	54	55	53	56	54	52
		CZ	-33	08-03	25	63	03-98	-10	-9	-7	-3	-11	-13	-15	-17	-16	-17	-22	-16
		DK	-51	09-93	-25	-1	02-90	-31	-31	-33	-29	-33	-29	-30	-35	-33	-28	-28	-29
	DE	-3	03-99	31	74	08-02	29	25	27	25	25	23	20	23	22	25	20	21	
	EE	-1	04-03	33	53	05-05	46	49	49	44	52	51	52	48	52	52	53	50	
	EL	5	06-99	40	76	08-03	70	73	62	64	69	68	67	67	66	61	55	64	
	ES	-5	06-97	30	65	03-03	52	52	53	53	54	52	51	52	53	52	52	52	
	FR	-23	01-99	13	54	01-04	50	46	42	39	45	46	47	49	51	49	50	50	
	IE	-3	07-97	29	66	12-02	40	46	45	46	51	40	45	42	40	42	38	36	
	IT	0	05-97	36	70	11-03	43	46	39	34	45	43	45	43	41	43	46	42	
	CY	21	08-01	41	62	02-04	53	61	59	61	54	61	51	47	41	51	50	46	
	LV	-31	09-96	23	62	06-05	42	45	49	52	50	48	51	50	53	55	62	62	
	LT	-17	10-03	8	32	05-05	23	25	23	24	27	28	24	26	24	25	32	26	
	LU	21	01-02	38	46	01-04	35	38	37	40	38	39	41	40	42	45	38	44	
	HU	9	12-02	41	71	06-95	30	28	29	27	26	25	19	20	20	23	22	25	
	NL	-3	04-90	28	89	12-02	33	35	33	27	27	33	34	33	31	33	30	20	
	AT	-48	02-96	5	46	01-03	36	36	36	35	42	36	39	35	39	42	40	38	
	PL	-4	05-03	18	45	10-04	44	44	44	45	43	39	37	33	31	24	29	29	
	PT	-6	08-97	37	61	10-90	39	42	42	44	43	46	43	42	41	42	40	42	
	SI	14	01-05	42	65	06-02	32	29	23	24	28	31	14	14	19	21	17	16	
	SK	12	05-05	43	69	10-99	39	39	43	37	34	32	24	17	14	14	12	13	
	FI	-59	11-95	-15	3	04-02	-9	-8	-10	-6	-5	-5</							

TABLE 5: Monthly survey of retail trade (s.a.)^{(a)(b)}

		Since 01/1990						2004						2005					
		Min.		Ave.		Max.		July	Aug.	Sep.	Oct.	Nov.	Dec.	Jan.	Feb.	Mar.	Apr.	May	June
		Value	Date	Value	Date	Value	Date												
RETAIL TRADE	EU	-19	12-92	-7	4	07-90	-6	-4	-7	-4	-8	-6	-5	-7	-9	-9	-9	-11	
CONFIDENCE	Euro area	-21	03-93	-9	8	08-90	-9	-7	-9	-7	-10	-7	-6	-8	-10	-8	-8	-9	
INDICATOR	BE	-25	05-93	-6	13	04-90	-5	-3	1	-1	-3	-2	1	-2	-10	-4	-10	-7	
	CZ	-1	02-99	14	26	08-02	20	15	25	25	23	17	17	20	19	14	15	16	
	DK	-6	10-01	17	37	11-94	20	24	24	28	26	29	28	28	31	29	28	25	
	DE	-44	01-03	-18	21	02-91	-27	-23	-28	-23	-27	-19	-17	-22	-30	-25	-23	-22	
	EE	-1	04-03	17	30	04-04	18	20	18	21	20	14	18	20	22	25	22	22	
	EL	-24	06-95	1	27	03-04	15	16	18	14	9	8	13	5	9	10	4	2	
	ES	-36	02-93	-7	10	06-00	-6	-9	-10	-11	-11	-10	-10	-12	-7	-2	-1	-6	
	FR	-37	04-97	-16	6	10-04	-2	0	1	6	-1	1	-2	-3	0	1	-3	-5	
	IE	-21	05-03	3	24	06-00	2	0	-3	1	-7	-1	-4	-8	-3	-11	-8	-1	
	IT	-19	10-96	8	39	10-95	11	15	9	6	7	5	10	14	12	3	13	6	
	CY	-14	04-03	-5	5	04-05	0	-5	-3	-2	-6	-1	-7	-3	0	5	1	-2	
	LV	1	10-96	9	19	06-03	15	15	13	14	13	10	12	14	11	11	13	15	
	LT	-25	09-00	-5	26	06-04	11	9	11	13	11	11	5	10	-5	-1	3	7	
	HU	-28	05-05	-7	9	11-97	-10	-12	-14	-19	-23	-24	-20	-20	-28	-24	-28	-25	
	NL	-16	12-03	12	30	10-99	-11	-6	-5	-3	-9	-10	-7	-10	-6	-4	-10	-8	
	AT	-29	03-03	-13	4	07-00	-12	-14	-8	-14	-18	-12	-15	-14	-10	-9	-15	-14	
	PL	-19	01-02	-6	7	07-98	-6	-9	-9	-9	-10	-8	-2	-6	-7	-8	-7	-6	
	PT	-27	01-03	-7	4	01-99	-6	-8	-5	-8	-11	-7	-7	-10	-7	-7	-10	-13	
	SI	3	01-01	11	23	04-99	11	13	10	12	13	14	13	10	8	14	14	13	
	SK	-17	10-93	8	34	11-98	10	-2	5	0	3	-7	8	5	12	15	12	20	
	FI	-17	11-00	-4	10	05-04	2	-4	-3	1	-6	4	-1	-8	-4	-1	1	6	
	SE	-8	09-01	6	27	04-00	0	6	1	0	-3	0	0	2	0	1	-2	3	
	UK	-28	06-05	-4	20	06-04	5	5	-3	4	0	-3	-5	-9	-13	-19	-22	-28	
PRESENT BUSINESS SITUATION	EU	-25	12-94	-8	18	04-90	-3	-3	-7	-7	-10	-6	-6	-11	-13	-12	-13	-17	
	Euro area	-29	12-94	-10	21	01-91	-10	-10	-11	-13	-17	-12	-8	-14	-15	-12	-13	-16	
	BE	-41	10-95	-6	29	06-00	-7	-5	-2	1	-11	2	1	-7	-16	-4	-15	-10	
	CZ	0	11-98	27	52	08-02	37	46	47	49	45	43	49	52	49	39	39	39	
Component of the retail confidence indicator	DK	-1	08-01	28	57	11-94	29	34	36	44	43	49	52	44	47	47	47	44	
	DE	-66	02-02	-21	46	11-90	-31	-35	-32	-38	-36	-21	-23	-34	-37	-25	-27	-26	
	EE	6	01-03	34	63	05-04	41	42	36	41	36	42	56	35	36	41	35	40	
	EL	-50	04-95	-8	40	01-04	21	24	27	17	18	25	32	12	14	8	7	0	
	ES	-72	07-93	-29	4	06-00	-26	-30	-33	-36	-34	-35	-31	-34	-34	-28	-26	-30	
	FR	-50	03-93	-13	11	10-94	5	6	7	8	-9	-5	3	-2	-1	0	-8	-7	
	IE	-30	05-03	6	37	06-98	5	4	-11	-3	-13	-10	-3	-4	-2	-10	-7	-3	
	IT	-42	02-95	14	73	02-93	15	26	14	9	13	3	12	14	16	0	15	-10	
	CY	-46	02-03	-30	-13	04-04	-19	-27	-30	-14	-16	-22	-34	-18	-22	-26	-14	-23	
	LV	-18	07-96	4	32	07-03	22	24	20	20	20	19	20	22	14	17	20	28	
	LT	-37	03-00	-12	43	06-04	12	10	15	15	15	16	10	14	-5	-2	9	5	
	HU	-41	03-05	-7	16	03-98	-11	-9	-16	-28	-30	-30	-24	-19	-41	-37	-38	-32	
	NL	-27	12-03	29	57	06-99	-11	-7	-5	-3	-13	-12	-7	-10	-11	-4	-11	-4	
	AT	-36	04-03	-12	13	07-00	-9	-16	-7	-18	-26	-14	-14	-13	-19	-11	-19	-15	
	PL	-36	01-01	-14	20	02-98	-5	-19	-20	-16	-15	-16	3	-8	-15	-12	-10	-6	
	PT	-46	01-03	-20	3	07-99	-25	-29	-21	-28	-32	-26	-26	-32	-26	-23	-28	-24	
	SI	2	04-02	18	44	01-99	23	21	19	25	24	21	15	17	11	15	13	13	
	SK	-35	06-95	10	58	11-98	12	-7	4	-9	-14	-22	2	-2	-1	19	10	11	
	FI	-15	11-00	7	40	05-04	25	9	4	13	-2	13	11	4	9	9	16	24	
	SE	-21	10-96	8	34	07-00	8	12	3	1	1	0	7	9	3	-1	-2	9	
	UK	-57	09-92	-5	42	06-04	21	21	6	13	15	14	-5	-8	-14	-22	-27	-34	
VOLUME OF STOCKS	EU	11	01-91	16	22	03-02	16	13	16	14	14	13	12	14	15	16	13	16	
	Euro area	7	01-91	16	23	10-96	15	12	16	14	12	12	11	13	13	14	11	14	
	BE	-5	09-90	13	32	03-92	10	7	4	5	3	6	5	8	15	12	12	9	
	CZ	0	03-00	10	27	05-95	6	11	12	13	9	15	8	13	13	17	13	14	
Component of the retail confidence indicator	DK	-1	04-98	18	32	04-00	22	18	23	18	13	16	18	13	14	15	15	16	
	DE	4	02-91	25	43	02-02	26	17	27	17	17	17	15	18	22	23	15	23	
	EE	6	12-02	12	18	07-04	18	15	15	12	15	15	12	16	13	13	10	8	
	EL	-7	11-02	13	41	12-93	5	12	17	19	23	28	12	18	21	20	25	16	
	ES	-8	02-96	5	16	07-92	5	8	7	6	8	8	6	8	8	6	5	5	
	FR	-3	10-93	11	21	09-98	13	12	11	11	10	7	14	14	8	8	8	5	
	IE	-5	06-00	10	25	08-98	17	8	7	9	12	8	8	10	9	7	9	6	
	IT	-8	10-99	8	43	10-96	2	1	8	16	6	6	-2	3	1	5	5	11	
	CY	-15	04-05	-5	6	03-05	-8	-1	-10	-7	-6	-11	-7	-1	6	-15	-14	-4	
	LV	-18	07-96	-4	8	12-02	-1	-1	-3	0	1	2	-1	0	0	3	3	1	
	LT	-21	12-99	-1	13	10-96	-1	0	0	-2	0	2	3	2	13	-2	-1	-3	
	HU	4	02-96	23	33	01-99	17	23	20	20	23	28	24	23	21	17	24	21	
	NL	5	07-97	11	19	06-05	17	16	15	14	14	18	16	16	17	16	16	19	
	AT	-2	01-00	25	36	01-96	25	25	18	24	23	23	31	25	25	21	24	22	
	PL	-9	09-03	-2	7	05-05	-3	-4	-2	-2	-1	-5	5	5	4	5	7	6	
	PT	-3	12-03	9	25	06-90	3	4	2	8	7	1	5	2	2	3	5	5	
	SI	7	06-05	17	33	01-99	18	17	17	19	17	12	14	14	13	10	8	7	
	SK	-5	06-00	10	26	02-95	19	22	16	13	12	12	9	14	7	7	3	4	
	FI	22	12-04	29	40	08-00	29	28	22	24	24	22	24	29	29	30	28	25	
	SE	18	04-00	31	44	02-98	33	30	25	31	32	31	29	29	30	30	29	28	
	UK	4	04-93	19	33	02-91	19	19	19	14	19	17	14	16	24	26	21	25	

TABLE 5 (continued): **Monthly survey of retail trade (s.a.)** ^{(a)(b)}

		Since 01/1990						2004					2005						
		Min.		Ave.		Max.		July	Aug.	Sep.	Oct.	Nov.	Dec.	Jan.	Feb.	Mar.	Apr.	May	June
		Value	Date	Value	Date	Value	Date												
EXPECTED BUSINESS SITUATION	EU	-20	01-93	2	18	06-00	3	6	2	9	1	2	3	3	1	1	-1	-1	
	Euro area	-26	02-93	-2	17	06-00	-1	2	0	7	-1	2	1	2	-1	1	1	2	
Component of the retail confidence indicator	BE	-23	04-03	2	22	04-98	2	3	9	1	5	-1	7	7	1	3	-5	0	
	CZ	2	09-00	23	46	02-02	28	9	40	38	34	24	10	22	21	22	18	21	
	DK	8	10-01	40	71	07-94	54	56	59	57	50	54	50	53	58	54	51	47	
	DE	-42	10-02	-7	26	12-90	-23	-16	-25	-12	-27	-20	-13	-14	-30	-26	-25	-17	
	EE	4	04-03	27	62	01-03	30	31	31	34	39	16	9	41	43	46	42	34	
	EL	-4	05-95	25	60	06-00	28	36	45	44	34	26	20	22	32	40	30	22	
	ES	-34	02-93	14	34	04-91	14	12	11	8	11	14	8	5	20	27	26	18	
	FR	-64	02-93	-23	19	10-04	4	5	5	19	16	14	4	5	7	10	6	-3	
	IE	-31	07-03	13	44	11-97	16	5	9	16	5	15	-1	-9	0	-14	-6	7	
	IT	-20	03-93	17	59	06-96	19	20	22	25	12	18	16	30	20	15	29	37	
	CY	-13	06-02	9	28	03-05	12	10	12	2	-7	9	8	8	28	26	5	12	
	LV	2	01-04	19	36	09-99	21	21	17	22	21	13	14	19	18	20	23	18	
	LT	-35	09-00	-4	45	03-04	21	17	18	23	18	19	8	17	4	-3	0	12	
	HU	-22	05-05	7	39	02-98	-2	-4	-5	-9	-17	-15	-14	-18	-22	-17	-22	-21	
	NL	-5	12-03	20	41	10-99	-4	6	6	8	1	1	1	-3	9	9	-1	-2	
	AT	-24	03-03	-3	15	07-00	-1	0	1	1	-5	0	0	-4	14	5	-4	-5	
	PL	-33	12-01	-7	17	07-98	-16	-13	-9	-14	-15	-12	-3	-6	-4	-6	-6	-9	
	PT	-26	01-03	8	39	01-90	9	9	7	12	8	8	10	5	8	5	3	-9	
	SI	15	02-03	31	47	04-99	28	36	28	31	31	34	37	27	26	37	35	34	
	SK	-14	11-94	23	60	12-96	36	23	27	23	34	13	30	30	45	32	30	54	
	FI	-4	04-03	9	39	05-97	10	9	10	15	7	20	9	1	9	17	16	19	
	SE	19	10-01	42	67	04-00	24	36	25	31	21	29	21	26	26	33	24	29	
	UK	-26	06-05	12	40	01-97	15	14	5	14	4	-6	5	-2	-3	-8	-19	-26	
	INTENTIONS OF PLACING ORDERS	EU	-16	10-02	-3	13	01-90	-3	-1	-6	-3	-9	-6	-6	-3	-7	-8	-10	-7
		Euro area	-23	10-02	-5	15	01-90	-6	-4	-8	-7	-11	-7	-8	-3	-8	-9	-10	-5
	BE	-27	05-93	-7	15	03-90	-8	-3	-3	-4	-10	-6	-8	-7	-8	-8	-7	-6	
	CZ	-34	02-96	29	56	02-95	23	26	24	33	22	30	10	22	14	16	16	13	
	DK	-12	10-01	18	58	07-94	20	21	23	28	28	25	21	28	27	23	28	22	
DE	-51	09-02	-15	21	02-91	-24	-17	-28	-27	-31	-21	-22	-15	-27	-28	-32	-23		
EE	-3	03-03	17	33	01-03	20	11	12	12	24	10	2	23	29	29	24	29		
EL	-23	04-93	10	38	06-96	17	18	19	12	5	16	14	2	15	14	9	-3		
ES	-31	02-93	5	21	01-90	9	2	-1	1	-1	4	-1	-3	1	11	11	9		
FR	-37	12-92	-14	11	10-99	-6	-5	-6	3	-2	-8	-4	-3	-3	-2	-8	-7		
IE	-43	05-03	-4	27	08-00	-7	-11	-7	10	-14	0	-21	-18	-13	-11	-7	2		
IT	-25	10-97	21	69	04-92	22	27	22	13	12	14	11	35	18	7	22	34		
CY	-44	06-02	-10	10	02-04	-2	-6	-3	-10	2	4	-9	-15	1	4	-2	-9		
LV	-4	10-96	9	27	03-02	12	13	9	12	17	9	10	11	16	13	19	14		
LT	-23	01-03	6	51	07-04	51	18	21	23	27	19	17	23	5	14	1	4		
HU	-29	03-05	-1	23	05-98	-5	-9	-9	-20	-25	-19	-17	-25	-29	-18	-26	-21		
NL	-22	09-03	4	25	08-99	-13	-11	-10	-10	-13	-15	-12	-17	-10	-7	-16	-14		
AT	-42	03-99	-31	-16	06-00	-28	-26	-25	-26	-32	-26	-25	-28	-27	-22	-26	-23		
PL	-30	12-01	-6	13	12-98	-8	-6	-5	-11	-13	-8	-3	-6	-2	-7	-5	-6		
PT	-41	01-03	-13	12	11-98	-3	-15	-14	-6	-12	-11	-8	-3	-6	-13	-23	-19		
SI	-2	10-01	14	30	10-00	15	14	16	11	14	16	12	10	6	13	19	13		
SK	-19	03-96	34	78	01-02	42	31	36	40	43	19	34	37	51	47	53	54		
FI	-20	07-03	-7	11	05-05	2	-4	-4	0	-1	9	9	-4	4	4	11	3		
SE	-17	10-01	14	52	03-00	2	12	8	4	-2	3	2	6	3	5	0	0		
UK	-37	03-91	4	34	08-96	10	6	-1	15	-2	-6	0	-9	-12	-12	-20	-22		
EMPLOYMENT EXPECTATIONS	EU	-13	12-92	-1	9	08-00	0	2	-2	2	-2	-3	0	-1	0	0	1	1	
	Euro area	-11	12-92	-1	10	08-00	1	3	0	3	-1	-3	2	0	1	1	5	5	
BE	-13	12-92	3	16	04-90	9	8	13	9	10	11	15	9	4	2	4	8		
CZ	-37	01-95	1	22	05-02	3	12	8	7	9	17	6	8	8	1	6	-2		
DK	-8	05-01	8	28	05-00	8	7	4	9	6	10	10	9	16	12	15	10		
DE ^(c)	-32	01-03	-8	15	03-98	-12	-6	-13	-7	-9	-11	-6	-10	-12	-10	-7	-8		
EE	-8	05-02	2	13	05-05	2	4	3	3	4	3	3	7	8	10	13	4		
EL	-9	06-05	29	62	03-98	20	21	22	10	5	4	3	2	0	8	0	-9		
ES	-19	09-93	0	8	12-98	2	1	0	-2	3	3	-1	4	5	3	4	3		
FR	-14	06-91	-2	12	10-00	-1	1	5	2	-2	-6	5	1	0	3	1	1		
IE	-17	05-03	2	22	03-98	-1	-3	-10	1	-5	-4	-9	-6	1	-3	-2	0		
IT	-34	02-97	11	54	02-00	28	29	15	32	15	8	19	21	31	26	42	47		
CY	-4	07-02	0	3	07-04	3	-1	-1	2	0	-1	-1	0	-2	1	-1	1		
LV	-23	04-96	0	13	07-03	10	10	10	9	4	10	10	10	9	5	9	9		
LT	-48	07-95	-13	60	02-05	55	22	25	28	19	50	41	60	48	47	42	42		
HU	-36	05-96	-9	5	11-03	-5	-11	-9	-12	-16	-13	-10	-13	-19	-15	-18	-16		
NL	-6	03-04	3	13	06-99	-5	-4	-3	-4	-2	-3	-4	-3	-2	-2	-4	-3		
AT	-20	03-99	-5	71	01-96	-4	-4	-4	-5	-8	-6	-5	-7	-6	-7	-7	-6		
PL	-28	12-01	-12	2	07-97	-14	-11	-9	-10	-9	-10	-8	-7	-7	-9	-8	-8		
PT	-23	05-03	-5	13	09-97	-2	-11	-10	-12	-11	-6	-3	-11	-11	-9	-11	-12		
SI	-46	02-99	-10	11	06-04	8	9	-3	0	-6	-4	5	-13	-13	-4	-13	-5		
SK	-71	12-93	-9	31	09-02	-3	-18	-26	-6	-6	-26	-15	-13	-17	-9	-3	0		
FI	-16	07-03	-3	10	05-04	4	-1	-4	1	1	-3	-2	-2	-2	-4	-3	2		
SE	-34	10-96	-4	23	06-00	-15	-12	-13	-10	-13	-11	-15	-19	-15	-14	-19	-16		
UK	-32	12-91	-2	25	10-97	0	0	-7	-2	-3	-1	-10	-7	-2	-6	-15	-18		

(a) United Kingdom: refers to the volume of sales for the time of the year.

(b) The indicator is the arithmetic average of the balances (%) for the present and the future business situation, and for stocks – with inverted sign.

(c) Quarterly data, seasonally adjusted monthly.

TABLE 6: Monthly survey of construction industry (s.a.)^(a)

		Since 01/1985						2004					2005						
		Min.		Ave.		Max.		July	Aug.	Sep.	Oct.	Nov.	Dec.	Jan.	Feb.	Mar.	Apr.	May	June
		Value	Date	Value	Date	Value	Date												
CONSTRUCTION CONFIDENCE INDICATOR	EU	-42	10-93	-21	3	02-90	-13	-13	-13	-12	-11	-11	-11	-12	-12	-12	-12	-12	-13
	Euro area	-44	08-96	-21	4	02-90	-16	-15	-15	-14	-14	-13	-13	-14	-13	-14	-14	-13	-14
	BE	-35	11-95	-12	10	02-00	-9	-9	-5	-5	-4	-9	-6	-6	-4	-6	-5	-6	-6
	CZ	-64	06-99	-18	3	06-95	-5	-5	-10	-9	-5	1	3	-4	-7	-9	-8	-10	-10
	DK	-37	12-91	-9	19	03-98	-6	-5	-2	-2	2	4	2	4	3	5	8	6	6
	DE	-62	11-02	-36	3	01-91	-49	-53	-52	-54	-53	-55	-50	-55	-51	-50	-47	-45	-45
	EE	-46	12-99	2	33	05-05	9	11	13	14	16	23	24	28	31	32	33	30	30
	EL	-53	03-05	-11	33	04-00	-24	-35	-45	-37	-47	-49	-44	-48	-53	-48	-31	-38	-38
	ES	-57	10-92	-3	42	01-99	5	25	18	26	22	24	17	26	28	20	15	10	10
	FR	-60	03-93	-17	34	10-00	1	3	6	5	7	8	11	11	11	8	7	6	6
	IE	-54	09-02	10	58	06-97	36	39	36	33	28	27	13	12	27	29	15	45	45
	IT	-68	10-93	-13	21	05-90	13	3	2	2	5	4	6	2	-5	-3	-1	-5	-5
	CY	-6	12-04	13	35	12-03	32	19	0	7	-3	-6	7	10	7	9	8	-4	-4
	LV	-64	07-93	-29	3	05-05	-8	-9	-11	-4	-3	-7	0	-2	3	3	3	:	:
	LT	-76	09-00	-42	-2	03-05	-21	-21	-12	-11	-9	-11	-10	-5	-2	-22	-11	-4	-4
	LU	-73	03-94	-26	24	03-90	-30	-28	-34	-19	-16	-10	-12	-22	-29	-20	-21	-26	-26
	HU	-24	12-04	-8	11	09-98	-11	-8	-10	-16	-20	-24	-19	-20	-17	-17	-17	-21	-21
	NL	-25	05-03	-3	27	12-00	-16	-14	-12	-7	-7	-7	-6	-5	-2	-1	-1	1	1
	AT	-60	04-96	-30	-13	02-03	-25	-24	-25	-23	-21	-16	-25	-22	-24	-24	-20	-16	-16
	PL	-63	12-02	-43	-22	03-98	-37	-37	-38	-32	-33	-39	-29	-32	-30	-29	-29	-31	-31
	PT	-56	02-03	-26	-1	12-97	-44	-40	-41	-38	-34	-32	-33	-40	-34	-39	-34	-42	-42
SI	-33	06-02	-8	6	01-05	2	2	4	-1	-1	-1	6	2	2	-2	-4	-7	-7	
SK	-86	07-99	-28	18	03-97	-18	-15	-14	-13	-23	-20	-12	-17	-13	-11	-11	-9	-9	
FI	-97	09-91	-18	48	06-98	0	2	-1	0	-4	4	-7	12	16	21	13	14	14	
SE	-83	12-93	-38	25	01-01	-9	-18	-6	-1	4	14	10	3	3	6	6	15	15	
UK	-79	06-91	-20	5	08-04	4	5	3	-3	1	-1	-2	-3	-2	-7	-10	-12	-12	
ORDER BOOKS	EU	-55	08-93	-30	-2	03-90	-23	-22	-21	-22	-18	-19	-18	-17	-17	-20	-19	-21	
	Euro area	-54	08-93	-28	-3	03-90	-25	-24	-22	-23	-20	-21	-19	-18	-17	-21	-19	-20	
Component of the construction confidence indicator	BE	-48	02-96	-23	2	02-00	-20	-19	-18	-14	-14	-20	-16	-16	-12	-15	-15	-16	
	CZ	-72	06-99	-22	9	12-02	-7	-8	-18	-20	-9	2	7	-4	-7	-13	-12	-13	
	DK	-49	12-91	-12	33	03-95	-8	-5	-3	-3	0	4	2	3	4	6	10	10	
	DE	-71	10-02	-45	-7	03-91	-63	-69	-63	-65	-65	-66	-64	-66	-61	-63	-59	-59	
	EE	-67	12-99	-5	40	05-05	4	0	4	10	8	17	28	26	30	35	40	35	
	EL	-77	06-95	-36	16	04-00	-18	-22	-27	-37	-54	-53	-49	-61	-63	-60	-48	-59	
	ES	-64	08-93	0	50	02-05	9	33	24	20	36	32	30	50	45	31	37	28	
	FR	-74	09-93	-24	37	10-00	-6	-4	1	0	3	2	9	10	8	1	-1	0	
	IE	-61	06-94	4	68	06-97	11	20	16	9	25	16	4	-9	28	25	21	37	
	IT	-84	02-94	-25	17	05-90	-6	-12	-10	-12	-6	-6	-3	-3	-10	-10	-11	-15	
	CY	-10	12-04	7	41	12-03	26	16	3	6	2	-10	6	5	-5	4	-5	-6	
	LV	-84	01-96	-52	-11	05-05	-28	-23	-25	-21	-20	-22	-16	-17	-14	-12	-11	:	
	LT	-96	09-00	-65	-21	06-05	-40	-41	-22	-27	-29	-34	-35	-30	-26	-28	-37	-21	
	LU	-73	08-93	-28	12	03-90	-34	-35	-35	-26	-17	-9	-19	-28	-32	-24	-21	-24	
	HU	-35	12-04	-17	3	09-98	-22	-17	-21	-28	-32	-35	-32	-33	-30	-28	-28	-33	
	NL	-30	09-93	-8	20	09-00	-19	-18	-17	-17	-15	-17	-13	-13	-9	-7	-4	-5	
	AT	-65	04-96	-41	-22	11-99	-39	-39	-40	-34	-33	-28	-35	-38	-38	-36	-33	-30	
	PL	-99	12-02	-68	-31	12-01	-66	-66	-66	-63	-64	-76	-61	-62	-60	-59	-60	-59	
	PT	-79	05-94	-44	-9	12-97	-64	-58	-63	-58	-56	-51	-53	-61	-57	-56	-55	-62	
	SI	-42	06-02	-12	3	08-04	-2	3	0	-3	1	0	2	0	-5	-9	-11	-13	
	SK	-93	03-94	-45	-5	03-97	-34	-33	-30	-27	-36	-31	-27	-29	-25	-23	-26	-23	
FI	-99	12-93	-26	38	06-98	-5	-2	-6	-10	-3	1	-3	9	7	10	5	9		
SE	-97	05-97	-50	33	01-90	-20	-33	-15	-11	-12	0	-7	-5	-10	-2	-2	-5		
UK	-87	06-91	-34	-3	01-90	-5	-7	-8	-14	-7	-9	-7	-10	-11	-18	-19	-24		
EMPLOYMENT EXPECTATIONS	EU	-34	04-96	-12	9	02-90	-4	-3	-5	-3	-4	-3	-5	-7	-6	-5	-6		
	Euro area	-38	04-96	-13	11	02-90	-7	-6	-9	-5	-7	-6	-7	-10	-9	-7	-8		
Component of the construction confidence indicator	BE	-24	11-95	-1	19	02-90	3	1	8	5	6	2	3	5	4	5	3		
	CZ	-57	06-99	-14	12	06-95	-3	-3	-2	1	-1	1	-1	3	-7	-4	-6		
	DK	-31	09-91	-5	42	03-98	-4	-4	-1	-1	3	5	2	5	3	3	6		
	DE	-59	03-96	-27	19	02-90	-36	-37	-42	-42	-40	-43	-36	-43	-41	-36	-35		
	EE	-45	03-99	8	68	01-97	15	23	23	18	24	29	20	30	33	30	27		
	EL	-64	09-04	14	60	03-99	-30	-49	-64	-38	-40	-45	-40	-34	-42	-36	-14		
	ES	-66	03-93	-6	54	01-99	0	16	11	31	7	17	4	2	11	8	-6		
	FR	-51	03-93	-10	31	10-00	7	9	11	9	11	14	13	13	14	16	15		
	IE	-50	09-02	16	61	07-04	61	58	56	57	31	38	22	32	26	34	9		
	IT	-60	10-93	-2	31	06-04	31	18	14	16	15	14	15	8	-1	5	9		
	CY	-8	11-04	20	48	11-03	37	22	-2	9	-8	-1	7	16	19	14	20		
	LV	-45	07-93	-7	26	03-04	12	6	4	13	14	9	16	13	20	18	18		
	LT	-56	09-00	-18	37	03-03	-2	-2	-2	5	11	13	16	20	21	-15	16		
	LU	-77	02-94	-24	36	03-90	-26	-22	-34	-12	-14	-12	-5	-15	-26	-16	-21		
	HU	-13	12-04	2	21	01-98	1	1	1	-3	-8	-13	-6	-7	-5	-5	-7		
	NL	-26	05-03	2	36	12-00	-13	-10	-6	3	1	3	1	3	4	6	2		
	AT	-76	02-01	-18	14	02-03	-12	-9	-10	-11	-9	-4	-16	-5	-9	-12	-7		
	PL	-49	04-02	-14	18	05-96	-8	-8	-9	-2	-3	-2	2	-2	-1	2	1		
	PT	-47	02-03	-8	19	09-97	-25	-21	-19	-18	-13	-12	-12	-19	-12	-22	-13		
	SI	-23	06-02	-3	9	03-05	6	1	7	2	-2	-1	9	3	9	5	2		
	SK	-86	07-99	-12	41	01-97	-1	3	3	1	-11	-9	3	-5	-2	1	4		
FI	-100	04-91	-11	59	03-97	4	5	5	10	-4	7	-11	16	26	32	21			
SE	-78	01-97	-26	45	01-01	2	-3	4	9	20	27	26	11	4	13</				

TABLE 6 (continued): Monthly survey of construction industry (s.a.)^(a)

		Since 01/1985				2004						2005							
		Min.		Ave.		Max.		July	Aug.	Sep.	Oct.	Nov.	Dec.	Jan.	Feb.	Mar.	Apr.	May	June
		Value	Date	Value	Date	Value	Date												
TREND OF ACTIVITY COMPARED WITH PRECEDING MONTHS	EU	-35	03-93	-8	15	03-90	1	1	0	2	-2	1	7	0	-9	-5	3	0	
	Euro area	-39	03-93	-9	17	03-90	-1	-2	-2	1	-5	0	5	-2	-12	-6	3	-1	
	BE	-37	03-91	-4	36	02-90	-4	-7	0	10	-1	-5	2	3	-14	0	10	-7	
	CZ	-34	06-99	24	77	01-05	42	42	33	52	60	60	77	61	50	41	36	34	
	DK	-21	04-03	-3	19	01-98	-2	-2	0	-2	8	8	5	9	8	8	8	9	
	DE	-44	03-96	-19	19	03-90	-26	-27	-25	-27	-27	-25	-23	-29	-39	-25	-14	-21	
	EE	-25	03-99	18	47	02-95	28	20	29	35	40	38	42	46	38	32	38	33	
	EL	-50	04-05	6	61	06-98	23	7	-10	-15	-24	-23	-23	-35	-44	-50	-23	-15	
	ES	-49	07-97	5	59	01-99	10	21	0	22	-2	22	27	16	5	23	38	32	
	FR	-64	09-93	-9	42	07-00	10	12	16	20	19	16	20	19	13	10	8	11	
	IE	-45	09-91	3	47	05-96	47	24	23	46	27	10	24	-7	15	6	0	-5	
	IT	-50	03-93	-2	26	07-04	26	4	12	10	5	6	15	11	3	2	7	-3	
	CY	-29	09-04	6	78	09-02	8	20	-29	9	-15	-12	9	4	1	34	-7	-13	
	LV	-47	04-96	-3	44	06-02	13	13	12	16	19	9	21	19	21	25	24	:	
	LT	-61	03-00	-5	81	06-02	20	28	18	18	11	0	11	23	-7	10	18	19	
	LU	-68	10-02	-23	30	04-91	-38	-29	-6	-17	-18	-4	-2	-9	-32	-41	-32	-25	
	HU	-37	03-03	-8	14	03-99	5	3	-2	-8	-14	-18	-17	-19	-20	-12	-12	-17	
	NL	-41	02-96	-2	37	03-97	-6	2	8	1	-6	-1	12	2	-5	1	5	5	
	AT	-87	04-96	-8	27	01-04	-4	-1	-7	4	8	15	22	-16	-38	-28	-7	1	
	PL	-30	01-02	9	42	01-05	9	12	11	17	20	24	42	23	0	-3	4	8	
PT	-37	09-03	-9	24	05-97	-21	-10	-5	-10	-13	-16	-8	-12	-24	-29	-19	-27		
SI	-7	05-05	12	33	02-04	17	13	16	13	15	13	11	3	1	-4	-7	-3		
SK	-43	06-99	6	53	12-04	40	44	50	47	50	53	37	3	-6	0	18	24		
FI	-88	09-91	5	75	01-98	18	41	32	25	17	26	25	29	25	11	10	23		
SE	-67	12-91	-13	46	04-01	-13	2	21	9	13	10	16	13	12	11	20	34		
UK	-69	06-91	-6	16	02-04	8	13	9	3	3	4	9	2	-1	-6	-1	-2		
PRICE EXPECTATIONS	EU	-21	04-96	0	25	02-90	7	10	6	5	9	6	7	3	1	4	2	1	
	Euro area	-27	04-96	-2	32	04-90	2	5	1	-1	3	1	2	-2	-3	-1	-2	-2	
	BE	-22	01-96	-1	29	01-90	2	0	0	3	0	0	-1	-2	-1	1	-1	-1	
	CZ	-39	08-00	42	80	02-95	26	38	20	23	27	19	18	22	23	18	14	21	
	DK	-36	03-03	-17	0	05-98	-9	-9	-10	-10	-3	-5	-4	-6	-6	-5	-5	-7	
	DE	-45	03-96	-13	45	02-90	-21	-19	-21	-20	-20	-18	-19	-21	-25	-18	-19	-20	
	EE	-29	09-99	30	88	04-94	24	37	40	36	42	46	40	41	43	38	42	58	
	EL	-39	06-05	6	35	06-95	-7	-17	-27	-38	-32	-32	-23	-30	-28	-38	-39	-39	
	ES	-20	10-93	18	71	10-00	25	47	25	18	39	35	25	20	20	23	20	23	
	FR	-60	03-93	-16	32	10-00	2	3	4	2	3	-3	1	0	1	-4	-6	-9	
	IE	-66	07-03	6	58	03-00	54	34	16	8	8	5	10	-10	-1	8	5	11	
	IT	-16	07-93	18	63	06-90	22	21	20	17	22	15	29	16	12	17	13	16	
	CY	1	06-05	34	76	06-04	65	53	35	22	24	41	26	17	21	12	7	1	
	LV	-11	03-01	25	66	01-05	54	50	50	54	60	62	66	60	48	59	54	:	
	LT	-5	03-01	35	89	01-95	40	47	43	47	48	48	41	46	42	42	49	39	
	LU	-67	05-93	-28	29	11-00	-49	-41	-43	-42	-42	-41	-38	-35	-37	-29	-42	-48	
	HU	-3	01-05	11	32	03-01	10	10	9	11	10	9	-3	1	4	6	5	-1	
	NL	-7	01-04	25	69	04-01	7	9	11	13	9	5	-2	11	14	16	17	21	
	AT	-53	04-96	-11	18	06-91	1	-4	-1	2	-4	7	4	0	-1	1	-3	-4	
	PL	-27	03-02	16	45	05-96	12	9	7	11	10	8	12	9	7	5	1	1	
PT	-40	05-03	1	48	06-90	-17	-13	-16	-10	-10	-12	-11	-10	-7	-23	-10	-23		
SI	-6	05-02	5	16	05-04	11	14	14	-5	13	9	3	5	3	3	5	-2		
SK	-20	08-00	54	93	06-97	47	62	39	41	38	15	27	25	22	28	27	31		
FI	-45	06-91	9	65	05-97	19	6	5	-4	10	4	3	13	9	29	16	27		
SE	-75	06-91	-16	33	01-01	5	-3	9	7	11	10	16	7	5	12	23	19		
UK	-56	12-90	14	43	08-04	43	43	40	34	43	37	38	33	25	26	23	15		

(a) The indicator is the average of the balances (%) for the questions on order-books and employment expectations.

TABLE 7a: Manufacturing industry; future Member States (s.a.)^(a)
Balances: i.e.differences between the percentages of respondents giving positive and negative replies (s.a.)

		Since 01/1990						2004						2005					
		Min.		Ave.		Max.		July	Aug.	Sep.	Oct.	Nov.	Dec.	Jan.	Feb.	Mar.	Apr.	May	June
		Value	Date	Value	Date	Value	Date												
CONFIDENCE INDICATOR	BG	-30	06-93	-8	8	11-95	1	1	0	-1	2	3	2	2	0	2	3	2	
	RO	-22	09-92	-1	28	06-96	5	3	5	4	6	6	5	2	4	-3	-1	-3	
PRODUCTION EXPECTATIONS	BG	-17	02-97	21	42	11-95	28	28	26	26	32	36	30	30	29	32	32	32	
	RO	-8	07-92	23	52	03-03	25	21	23	28	28	24	29	29	30	20	19	14	
ORDER BOOKS	BG	-65	06-93	-44	-19	10-00	-31	-33	-35	-36	-34	-33	-33	-31	-33	-34	-31	-34	
	RO	-53	06-99	-16	50	06-96	-11	-13	-11	-14	-12	-10	-9	-12	-11	-16	-16	-16	
STOCKS OF FINISHED PRODUCTS ^(b)	BG	-22	06-97	2	35	08-93	-5	-7	-9	-8	-8	-7	-7	-7	-5	-7	-7	-6	
	RO	-4	06-96	10	51	07-92	-2	0	-3	1	-2	-2	5	11	7	13	6	6	

(a) The confidence indicator is the arithmetic average of the three components (the last with inverted sign).
(b) Highest figure is considered as minimum, lowest figure is considered as maximum.

TABLE 7b: Services^(a)

		Since 01/1990						2004						2005					
		Min.		Ave.		Max.		July	Aug.	Sep.	Oct.	Nov.	Dec.	Jan.	Feb.	Mar.	Apr.	May	June
		Value	Date	Value	Date	Value	Date												
CONFIDENCE INDICATOR	BG	15	03-03	29	42	06-02	26	27	29	24	21	24	30	26	29	28	31	35	
	RO⁽ⁿ⁾	6	02-03	29	72	06-04	47	40	38	35	32	29	30	20	20	22	26	17	
ASSESSMENT OF BUSINESS CLIMATE	BG	16	12-04	31	66	05-02	27	24	23	21	17	16	21	16	25	26	26	43	
	RO⁽ⁿ⁾	9	12-03	39	75	04-03	52	40	47	43	41	34	43	21	22	25	29	19	
EVOLUTION OF DEMAND IN RECENT MONTHS	BG	-1	05-02	17	36	03-04	18	24	25	21	21	14	15	12	16	14	19	17	
	RO⁽ⁿ⁾	-4	02-03	22	69	06-04	41	34	22	40	31	28	23	18	16	17	20	9	
EVOLUTION OF DEMAND IN THE MONTHS AHEAD	BG	16	03-03	39	59	05-02	33	33	38	28	26	43	53	48	45	46	47	44	
	RO⁽ⁿ⁾	-23	01-03	26	72	06-04	48	46	46	22	24	26	24	20	22	23	28	22	

(a) The confidence indicator is the arithmetic average of the three components.
(n) Not seasonally adjusted.

TABLE 7c: Consumer opinion and financial condition; future Member States (a)

		Since 01/1990						2004						2005					
		Min.		Ave.		Max.		July	Aug.	Sep.	Oct.	Nov.	Dec.	Jan.	Feb.	Mar.	Apr.	May	June
		Value	Date	Value	Date	Value	Date												
CONFIDENCE INDICATOR	BG⁽ⁿ⁾	-39	08-03	-28	-14	08-01	-29	-31	-28	-28	-29	-27	-27	-26	-23	-26	-22	-19	
	RO⁽ⁿ⁾	-33	07-02	-24	-13	01-05	-16	-18	-18	-17	-14	-14	-13	-18	-20	-22	-22	-21	
FINANCIAL SITUATION OVER NEXT 12 MONTHS	BG⁽ⁿ⁾	-23	07-03	-12	3	07-01	-14	-15	-10	-12	-11	-11	-8	-9	-8	-9	-6	-4	
	RO⁽ⁿ⁾	-14	07-02	-3	9	11-04	6	6	6	4	9	7	9	5	3	-1	1	1	
GEN. ECON. SITUATION OVER NEXT 12 MONTHS	BG⁽ⁿ⁾	-25	08-03	-8	16	07-01	-11	-13	-8	-9	-9	-5	-4	-4	0	-3	0	2	
	RO⁽ⁿ⁾	-14	07-02	-1	12	01-05	8	7	5	7	8	7	12	8	6	1	-1	1	
SAVINGS OVER NEXT 12 MONTHS	BG⁽ⁿ⁾	-81	03-02	-75	-68	06-01	-73	-78	-76	-73	-78	-75	-76	-74	-73	-74	-69	-68	
	RO⁽ⁿ⁾	-63	12-03	-54	-46	12-04	-47	-48	-51	-47	-46	-46	-49	-52	-49	-53	-52	-50	
UNEMPLOYMENT OVER NEXT 12 MONTHS	BG⁽ⁿ⁾	2	07-01	19	31	03-02	18	20	16	17	17	19	20	17	12	17	11	7	
	RO⁽ⁿ⁾	24	11-04	38	51	01-02	32	36	31	32	24	25	25	31	39	35	36	37	

(a) The confidence indicator is the average of the four components.
(n) Not seasonally adjusted.

TABLE 7d: Retail trade (s.a.)^(a)

		Since 01/1990						2004						2005					
		Min.		Ave.		Max.		July	Aug.	Sep.	Oct.	Nov.	Dec.	Jan.	Feb.	Mar.	Apr.	May	June
		Value	Date	Value	Date	Value	Date												
CONFIDENCE INDICATOR	BG	5	11-00	19	32	06-00	11	15	12	15	13	13	11	9	10	11	15	11	
	RO	1	06-99	16	36	12-97	19	22	24	24	23	23	22	17	19	18	17	17	
PRESENT BUSINESS SITUATION	BG	-3	09-96	22	54	11-97	11	13	11	14	8	12	8	5	2	8	15	11	
	RO	-1	02-03	28	58	09-97	23	25	27	33	28	32	35	23	18	18	26	26	
VOLUME OF STOCKS	BG	-55	03-97	-18	12	11-00	-7	-8	-8	-5	-8	-4	-4	-5	-6	-5	-6	-1	
	RO	-20	12-94	4	55	10-95	1	3	-3	2	-1	2	-3	-2	-1	0	3	4	
EXPECTED BUSINESS SITUATION	BG	-33	02-97	15	43	03-00	15	22	17	27	23	23	21	16	21	20	25	20	
	RO	-37	10-94	24	74	11-95	36	45	41	40	40	39	28	28	38	35	27	28	

(a) The confidence indicator is the arithmetic average of the three components (for stocks, with inverted sign).

TABLE 7e: Construction industry; future Member States (s.a.)^(a)

		Since 01/1990						2004						2005					
		Min.		Ave.		Max.		July	Aug.	Sep.	Oct.	Nov.	Dec.	Jan.	Feb.	Mar.	Apr.	May	June
		Value	Date	Value	Date	Value	Date												
CONFIDENCE INDICATOR	BG	-56	03-93	-28	1	03-05	-13	-15	-13	-11	-9	-4	-9	-6	1	1	-1	1	
	RO	-60	09-99	-9	35	06-96	-6	-13	-17	-6	-6	-8	-12	-16	-15	-18	-18	-18	
ORDER BOOKS	BG	-74	10-00	-43	-20	12-04	-33	-32	-30	-29	-23	-20	-21	-26	-24	-22	-24	-22	
	RO	-89	09-99	-12	64	03-98	-18	-27	-25	-23	-20	-23	-24	-26	-31	-32	-30	-27	
EMPLOYMENT EXPECTATIONS	BG	-50	01-93	-14	27	03-05	8	3	4	7	6	11	4	14	27	24	23	23	
	RO	-39	06-97	-7	38	03-01	5	1	-10	10	7	7	1	-5	1	-4	-5	-9	

(a) The confidence indicator is the average of both components.

TABLE 8a: Industrial investment survey - all branches *; EU Member States
Results of March/April 2005 investment survey, % change in **value**, over the preceding year

Date of survey:	Oct./	Mar./	Oct./	Mar./	Oct./	Mar./	Oct./	Mar./	Oct./	Mar./	Oct./	Mar./	Oct./	Mar./
	Nov.	Apr.	Nov.	Apr.	Nov.	Apr.	Nov.	Apr.	Nov.	Apr.	Nov.	Apr.	Nov.	Apr.
	2001	2002	2002	2003	2002	2003	2003	2004	2003	2004	2004	2005	2004	2005
for Year	Previs.	Previs.	Estim.	Definit.	Previs.	Previs.	Estim.	Definit.	Previs.	Previs.	Estim.	Definit.	Previs.	Previs.
	2002				2003				2004				2005	
EU	-2	-3	-4	-3	2	5	-4	-3	5	7	2	1	4	5
Euro area	-3	-4	-7	-9	0	0	-8	-7	3	4	-1	-1	3	3
BE	1	-4	-14	-13	7	5	-7	-3	-5	2	-13	-8	22	7
CZ	:	:	-5	-16	7	3	-5	-5	10	23	1	12	10	2
DK	2	10	2	1	1	3	5	-3	4	22	15	4	-2	10
DE	-2	-1	-3	-7	4	2	-2	-4	4	6	1	-3	2	4
EE	:	:	115	66	72	59	42	72	34	44	75	76	60	64
EL	37	10	-22	-21	13	12	-22	-8	5	-2	-31	-20	-4	-9
ES	-2	-6	-7	-3	1	-3	-17	-30	11	16	-17	-3	26	9
FR	-5	-2	-9	-13	0	5	-4	-4	4	6	5	0	-3	1
IE	-10	11	-26	-17	-5	19	-28	-12	36	20	:	:	:	:
IT	-8	-19	-7	-9	-11	-10	-18	-3	-2	-10	-1	10	-2	-10
CY	:	:	0	-1	0	-1	-1	-1	0	1	-1	-1	1	1
LV	-6	-6	3	2	-32	-23	-17	3	-3	-3	16	4	21	-2
LT	:	:	61	64	19	20	21	42	23	37	25	38	27	23
LU	-8	-14	-23	-21	22	8	-8	-10	-4	17	18	17	-12	-8
HU	:	:	13	9	20	12	10	7	13	10	13	17	21	17
NL	12	21	5	6	6	8	-2	-5	-7	2	-11	-10	5	20
AT	-3	-6	-8	-7	0	-3	-5	-15	-3	0	8	-2	-4	5
PL	16	25	21	113	23	178	79	92	65	92	63	32	14	32
PT	2	-17	-29	-21	-8	-13	-24	-8	2	-7	-10	-1	-8	-8
SI	:	:	11	26	19	22	20	24	25	16	12	17	16	24
SK	:	:	21	38	40	41	-11	-10	16	24	11	4	-2	3
FI	-9	-11	-17	-20	1	-12	-8	-12	1	0	2	-3	7	11
SE	-7	2	-3	-6	-4	4	-6	-9	5	9	4	-3	8	29
UK	4	-3	4	6	4	0	1	2	3	4	9	5	7	4

Source: European Commission investment surveys.

TABLE 8b: Industrial investment survey - all branches *; EU Member States
Results of March/April 2005 investment survey, % change in **volume**, over the preceding year

Date of survey:	Oct./	Mar./	Oct./	Mar./	Oct./	Mar./	Oct./	Mar./	Oct./	Mar./	Oct./	Mar./	Oct./	Mar./
	Nov.	Apr.	Nov.	Apr.	Nov.	Apr.	Nov.	Apr.	Nov.	Apr.	Nov.	Apr.	Nov.	Apr.
	2001	2002	2002	2003	2002	2003	2003	2004	2003	2004	2004	2005	2004	2005
for Year	Previs.	Previs.	Estim.	Definit.	Previs.	Previs.	Estim.	Definit.	Previs.	Previs.	Estim.	Definit.	Previs.	Previs.
	2002				2003				2004				2005	
EU	-3	-4	-5	-4	0	4	-5	-4	2	4	0	-2	2	3
Euro area	-4	-5	-8	-9	1	1	-7	-7	2	3	-2	-2	2	1
BE	3	-2	-12	-11	6	5	-8	-4	-7	0	-15	-10	20	5
CZ	:	:	1	-11	8	4	-4	-4	11	24	2	13	9	1
DK	4	12	4	3	5	7	9	1	5	23	16	5	-3	9
DE	-1	0	-2	-6	6	4	0	-2	4	6	1	-3	2	4
EE	:	:	111	64	70	58	41	70	31	41	71	72	56	60
EL	36	9	-22	-21	12	11	-22	-9	4	-3	-32	-21	-6	-11
ES	-4	-7	-8	-4	-1	-5	-19	-32	9	14	-19	-5	23	7
FR	-9	-6	-12	-16	0	5	-4	-4	2	5	4	-2	-4	0
IE	-10	11	-26	-17	-2	23	-25	-9	36	20	:	:	:	:
IT	-9	-20	-9	-10	-11	-10	-18	-3	-4	-12	-3	8	-4	-12
CY	:	:	-2	-3	-1	-1	-2	-2	-3	-2	-4	-4	-2	-1
LV	1	1	10	9	-33	-24	-18	2	-7	-7	12	0	17	-5
LT	:	:	69	72	22	24	24	46	32	46	34	48	36	31
LU	-7	-13	-22	-20	34	18	1	-1	-6	15	16	14	-13	-9
HU	:	:	9	5	17	10	7	5	11	8	11	15	18	14
NL	12	21	5	6	6	8	-2	-5	-8	1	-12	-11	4	19
AT	-3	-7	-9	-8	0	-3	-5	-15	-3	-1	7	-2	-5	4
PL	16	25	21	112	21	173	76	89	62	88	60	30	12	29
PT	6	-14	-27	-18	-7	-12	-23	-7	2	-7	-10	-1	-10	-10
SI	:	:	10	25	16	19	17	21	23	14	10	15	15	23
SK	:	:	11	27	35	36	-14	-13	16	24	12	4	-3	1
FI	-9	-11	-17	-19	1	-11	-8	-11	3	2	4	-2	5	9
SE	-6	3	-2	-5	-1	7	-2	-6	8	13	7	-1	8	28
UK	9	1	9	11	6	2	3	4	5	6	11	7	7	4

Source: European Commission investment surveys.

TABLE 8c: Industrial investment survey by branch; EU Member States
Results of March/April 2005 investment survey, % change in **value**, over the preceding year

	Intermediate goods		Motor vehicles		Investment goods		Durable cons. goods		Food & beverages		Non-durable cons. goods		Consumer goods		Total, all man. industry	
	2004	2005	2004	2005	2004	2005	2004	2005	2004	2005	2004	2005	2004	2005	2004	2005
EU	-1	7	-4	7	0	7	-4	13	10	1	9	-4	6	-1	1	5
Euro area	-4	5	-3	1	-2	4	-6	19	8	1	9	-7	5	-2	-1	3
BE	-16	10	-38	25	-21	34	10	50	-12	-4	52	-25	43	-8	-8	7
CZ	-3	11	18	-3	14	-1	11	11	3	-3	2	0	4	1	12	2
DK	-2	10	-44	118	29	-2	20	14	9	2	-12	34	0	16	4	10
DE	-3	5	-5	3	-4	6	-11	8	5	3	0	-4	-2	-3	-3	4
EE	57	55	:	:	75	28	13	65	131	104	77	75	102	85	76	64
EL	-14	-21	-62	-24	-35	21	3	-39	2	1	-25	4	-23	0	-20	-9
ES	-4	16	-4	3	35	-16	-3	3	-6	6	-1	1	-5	5	-3	9
FR	-2	-1	-2	-9	-1	11	8	33	3	0	4	9	3	7	0	1
IE	:	:	:	:	:	:	:	:	:	:	:	:	:	:	:	:
IT	5	-8	25	-5	-2	-17	-15	26	22	2	18	-36	12	-14	10	-10
CY	-1	0	-1	-1	-1	-1	-1	-1	-1	-1	-1	-1	-1	0	-1	1
LV	34	9	13	202	5	9	-30	-22	-20	-18	-15	-15	-17	-16	4	-2
LT	59	32	20	22	-9	11	-3	56	78	0	72	52	3	31	38	23
LU	20	-24	-50	4	-8	8	49	70	117	13	-25	148	20	72	17	-8
HU	15	20	28	31	10	6	36	11	11	1	17	-2	19	2	17	17
NL	-26	30	-3	44	-12	22	11	14	6	2	15	19	10	11	-10	20
AT	-9	19	-27	-22	-15	10	44	-24	49	-12	54	-9	50	-13	-2	5
PL	47	33	-23	41	32	38	13	-21	63	43	49	16	42	7	32	32
PT	6	3	32	26	-5	-32	-21	1	11	-21	1	-26	-4	-21	-1	-8
SI	20	33	35	76	29	21	3	9	14	21	8	3	7	8	17	24
SK	9	8	-10	1	24	-20	-57	21	-21	-5	-2	2	-25	3	4	3
FI	-11	1	3	-17	-10	10	-43	56	-20	10	-23	-9	-21	4	-3	11
SE	-1	34	-16	78	-10	53	3	-4	11	-19	0	-11	0	-10	-3	29
UK	3	5	-1	0	4	11	-2	-3	15	0	5	0	4	0	5	4

Source: European Commission investment surveys.

TABLE 8d: Industrial investment survey by branch; EU Member States
Results of March/April 2005 investment survey, % change in **volume**, over the preceding year

	Intermediate goods		Motor vehicles		Investment goods		Durable cons. goods		Food & beverages		Non-durable cons. goods		Consumer goods		Total, all man. industry	
	2004	2005	2004	2005	2004	2005	2004	2005	2004	2005	2004	2005	2004	2005	2004	2005
EU	-4	5	-6	5	-2	5	-6	11	8	-1	6	-6	3	-3	-2	3
Euro area	-5	3	-4	-1	-3	2	-7	17	6	-1	8	-8	4	-4	-2	1
BE	-18	8	-40	22	-22	31	8	47	-14	-6	49	-27	40	-10	-10	5
CZ	-2	10	19	-4	15	-2	12	10	4	-4	3	-1	5	0	13	1
DK	-1	9	-44	115	30	-3	21	13	10	1	-12	32	1	14	5	9
DE	-3	5	-5	3	-4	6	-11	8	5	3	0	-4	-2	-3	-3	4
EE	54	51	:	:	71	25	11	61	126	98	73	71	97	80	72	60
EL	-15	-23	-63	-26	-36	18	2	-40	1	-2	-26	2	-24	-2	-21	-11
ES	-6	14	-6	1	32	-18	-5	0	-8	3	-3	-1	-7	2	-5	7
FR	-3	-2	-3	-11	-3	9	6	31	1	-2	2	7	2	5	-2	0
IE	:	:	:	:	:	:	:	:	:	:	:	:	:	:	:	:
IT	3	-10	22	-7	-4	-19	-17	23	19	0	16	-37	10	-15	8	-12
CY	-4	-3	-4	-3	-4	-3	-4	-3	-3	-3	-4	-3	-4	-2	-4	-1
LV	29	5	9	192	1	5	-33	-25	-23	-21	-18	-18	-20	-19	0	-5
LT	71	41	28	31	-3	19	4	67	90	7	84	63	10	40	48	31
LU	17	-25	-51	3	-10	7	46	68	113	12	-26	146	18	70	14	-9
HU	13	18	26	29	8	4	34	9	9	-1	16	-4	17	0	15	14
NL	-27	29	-4	43	-13	21	10	13	5	1	14	18	9	10	-11	19
AT	-10	18	-28	-23	-16	9	43	-25	48	-13	53	-10	49	-13	-2	4
PL	44	31	-24	38	29	35	11	-23	60	40	46	14	39	5	30	29
PT	6	1	32	23	-5	-33	-21	-2	11	-22	1	-28	-4	-23	-1	-10
SI	18	32	33	75	27	20	1	8	12	20	6	2	5	7	15	23
SK	10	6	-10	-1	24	-22	-57	19	-21	-7	-2	0	-25	1	4	1
FI	-9	-1	5	-18	-8	9	-42	54	-19	8	-22	-10	-20	2	-2	9
SE	2	34	-14	78	-7	53	6	-5	14	-19	3	-11	3	-10	-1	28
UK	4	5	1	0	6	11	0	-3	18	0	7	0	6	0	7	4

Source: European Commission investment surveys.