

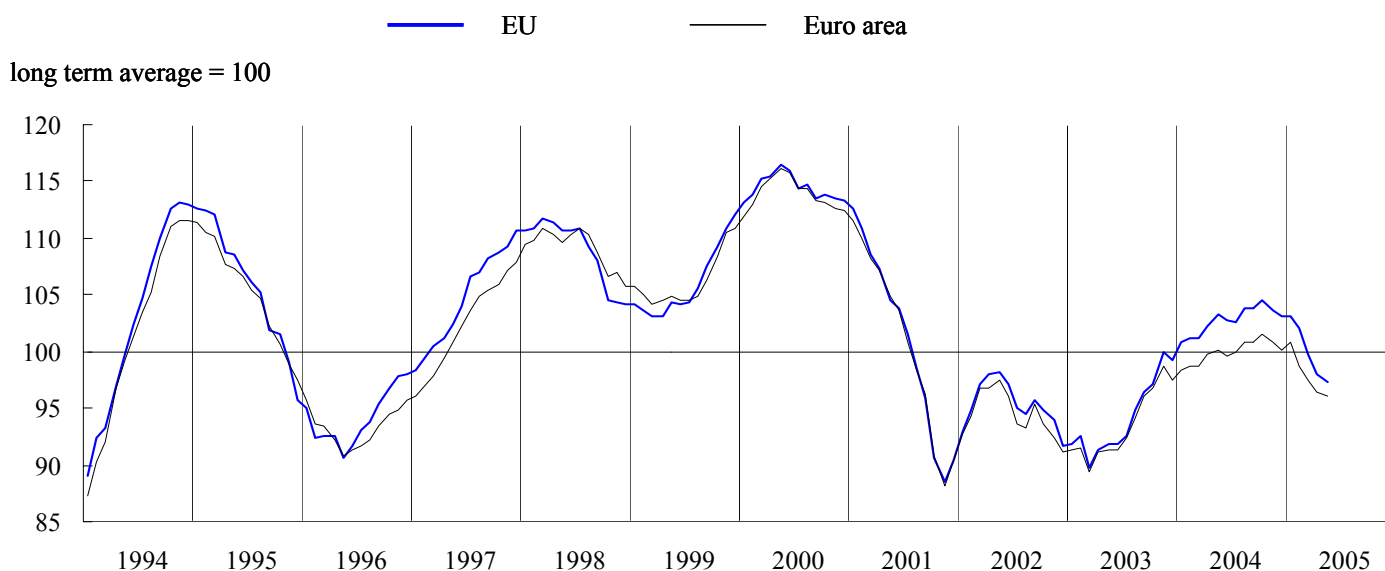


## BUSINESS AND CONSUMER SURVEY RESULTS

May 2005

Next publication of Business and Consumer Survey Results scheduled for 30 June 2005  
[http://europa.eu.int/comm/economy\\_finance/indicators/businessandconsumersurveys\\_en.htm](http://europa.eu.int/comm/economy_finance/indicators/businessandconsumersurveys_en.htm)

GRAPH 1: Economic sentiment indicator (s.a.)



### The decline of economic sentiment in the EU and the euro area continues in May

In May, the *economic sentiment indicator (ESI)* fell by 0.7 points in the EU and by 0.4 points in the *euro area*, continuing its almost uninterrupted decline since October of last year. However, with the rate of the decline decelerating (EU: March: -2.4, April: -1.7, May -0.7; euro area: March: -1.3, April: -1.0, May: -0.4), the indicator could see a stabilisation in coming months.

In both areas, the decline in the economic sentiment indicator was due mainly to a worsening of confidence in the industrial sector and among consumers. By contrast, confidence in the service sector improved for the first time since the beginning of the year. Confidence in the retail sector remained steady. Confidence in the construction sector remained unchanged in the EU, while it improved slightly in the euro area.

Economic sentiment did not develop in a uniform way across Member States. Particularly, in *Germany* the sharp decline of the ESI since the beginning of the year came to a halt and a moderate increase in May brought the indicator back to the level registered in March. Moreover, *Spain* saw a significant increase of the indicator, which now surpasses the 100 mark for the first time in more than a year. By contrast, strong decreases were registered in *Poland* and the *UK*, while *France* and *Italy* saw declines of a more moderate scale.

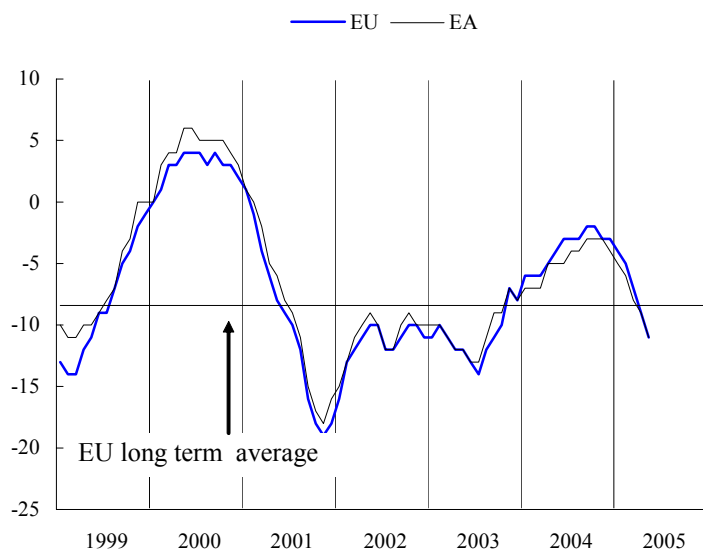
## Industrial confidence declines in both the EU and the euro area

*Industrial confidence* declined by 2 points in both the EU and the euro area. In both areas, the indicator has been on a downward path since the last quarter of 2004 and confidence is now well below the long-term average.

The decrease of the indicator in the EU was reflected in all indicator components. The assessment of *order books* worsened by 2 points, *production expectations* and the opinions on the *stocks of finished products* declined by 1 point. Developments in the euro area were similar.

Industrial confidence fell in all large Member States with the exception of *Germany* and *Poland*, where the indicator remained steady. The most significant developments were observed in the *UK*, where, following its strong deterioration in the previous two months, the indicator dropped by another 3 points.

GRAPH 2: Industrial confidence indicator

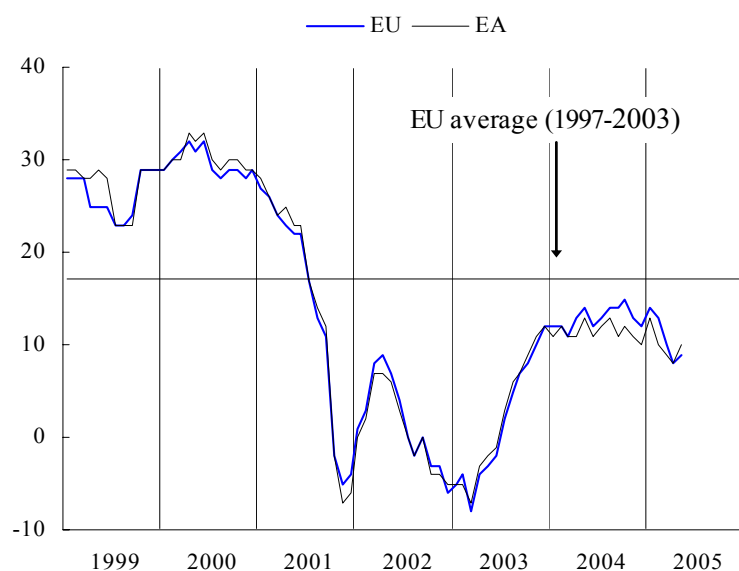


## The deterioration of services confidence comes to a halt

The deterioration of *confidence* in the *services sector*, which started in January of this year, came to a halt in May. In the euro area, the indicator improved by 2 points, while in the EU it edged up by 1 point. The indicator has been characterised by strong volatility throughout the last one and a half years, indicating a high degree of uncertainty prevailing in this sector.

The improvement of services confidence was mainly due to a much more positive assessment of the *evolution of demand in recent months*. The assessment of the *current business situation* improved slightly in the EU and remained stable for the euro area. *Expected demand* showed a considerable worsening.

GRAPH 3: Services confidence indicator



At country level, no major changes among the larger Member States were registered except for *Spain*, where confidence surged by 10 points. Services sector managers in *Germany*, *France* and the *UK* were slightly more confident than in the month before, while in *Italy* and *Poland* confidence was slightly down.

## Consumer confidence down in both the EU and the euro area

After having been fairly stable since autumn of last year, *consumer confidence* fell in both the EU and the euro area. For the EU, this was the second fall in a row, while for the euro area the decline of 2 points came after an increase of 1 point in April. Despite these falls, the picture continues to be dominated by a relative stability of the indicator since the beginning of last year.

As was the case for the overall confidence indicator, the underlying components did not change strongly either. Consumers gave a slightly more negative assessment regarding their own *financial situation*, the *general economic situation* and *future unemployment*. With regard to their *savings expectation* consumers had a more positive assessment in May compared to April.

The results at the country level were slightly more volatile. In the large Member States, consumers in *France*, *Poland* and the *UK* showed a considerable drop in confidence. Only *Germany* saw a (moderate) improvement in consumer confidence.

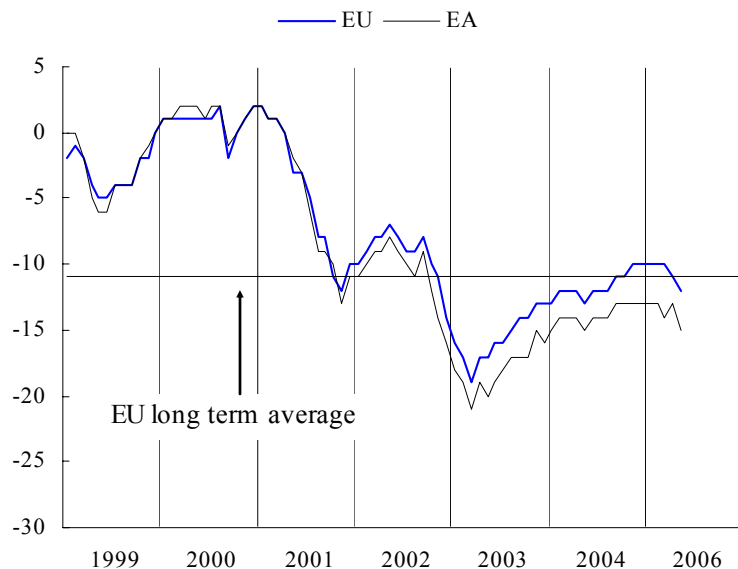
## Confidence in retail trade unchanged in both the EU and the euro area

The *retail trade confidence indicator* remained unchanged in both the EU and the euro area. In the light of the erratic behaviour of the indicator over the last 18 months it is not easy to recognise a clear trend, especially in the euro area. In the EU, there seems to be a mild downward trend, which set in at the end of 2003.

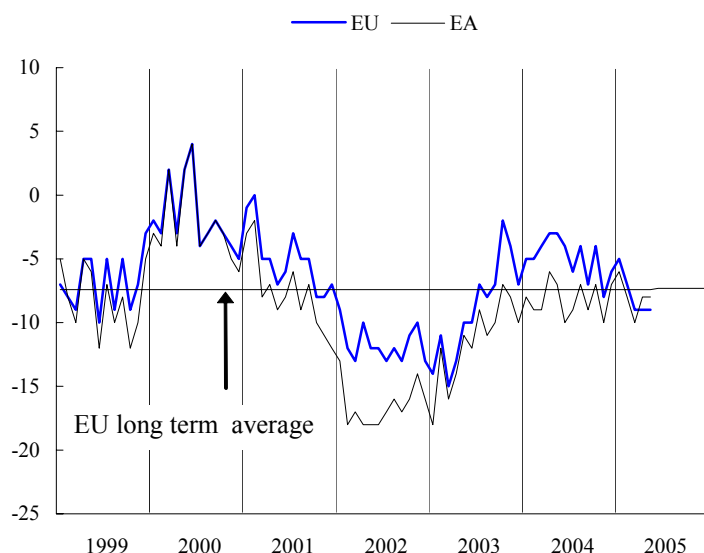
As to the underlying indicator components, the developments in the EU and the euro area were fairly similar. Both areas saw a slight deterioration for the *present business situation* coupled with a more positive assessment of the *volume of stocks*. Regarding the *expected business situation* the views of retailers did not change in the euro area compared to the previous month, while they worsened slightly in the EU.

Developments were less uniform at country level. Among the large Member States, *France*, *Poland* and the *UK* saw a noticeable fall in confidence. *Germany* and *Spain* registered a moderate improvement, while in *Italy* the large fall of last month was more than compensated by an increase of 10 points in May.

GRAPH 4: Consumer confidence indicator



GRAPH 5: Retail confidence indicator



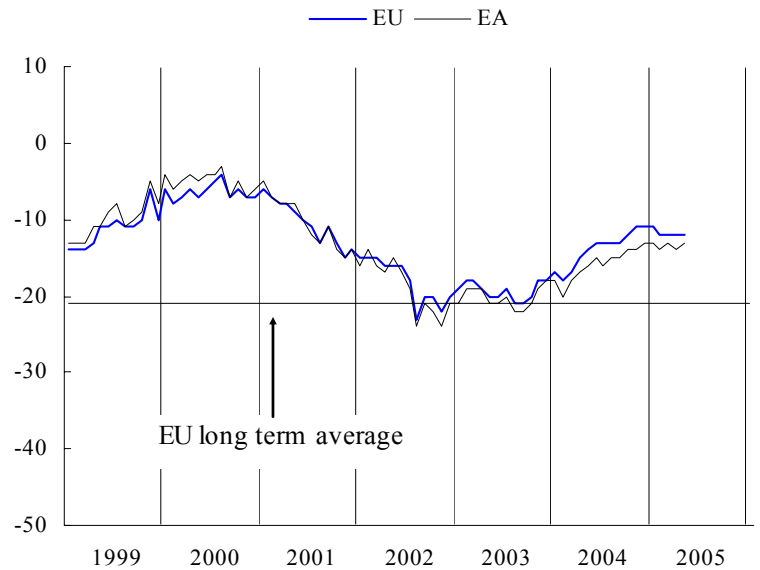
## Construction confidence stable in the EU and slightly up in the euro area

The *construction confidence indicator* remained unchanged in the EU and improved by 1 point in the euro area. Confidence in the construction sector has been fairly stable since autumn of last year.

As for the components, a slightly more positive assessment of *order books* in the EU was cancelled out by an equally small fall with regard to *employment expectations*. Developments in the euro area were similar, with the improvement in order books being slightly larger.

At the country level, a considerable fall in construction confidence was recorded in *Spain* and the *UK*. *France* also registered a small fall of confidence. Among the other large Member States, *Germany* and *Italy* saw a noticeable improvement in confidence, while in *Poland* confidence remained unchanged.

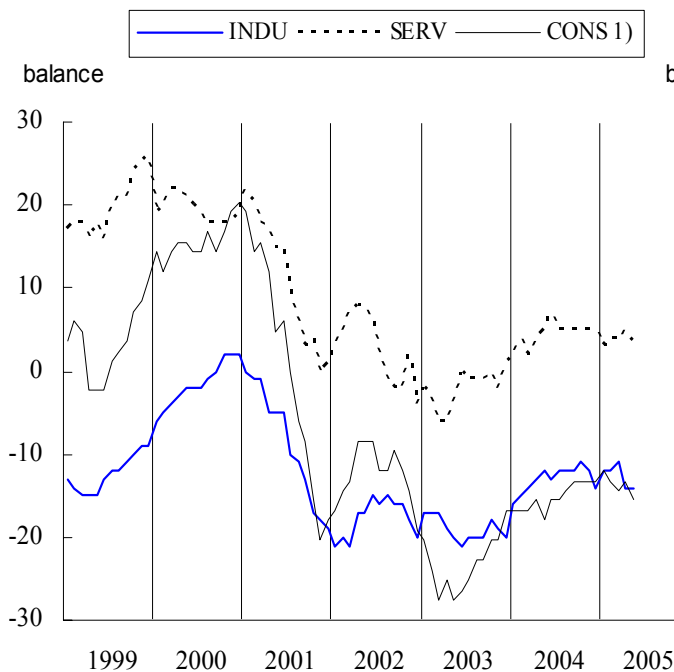
GRAPH 6: Construction confidence indicator



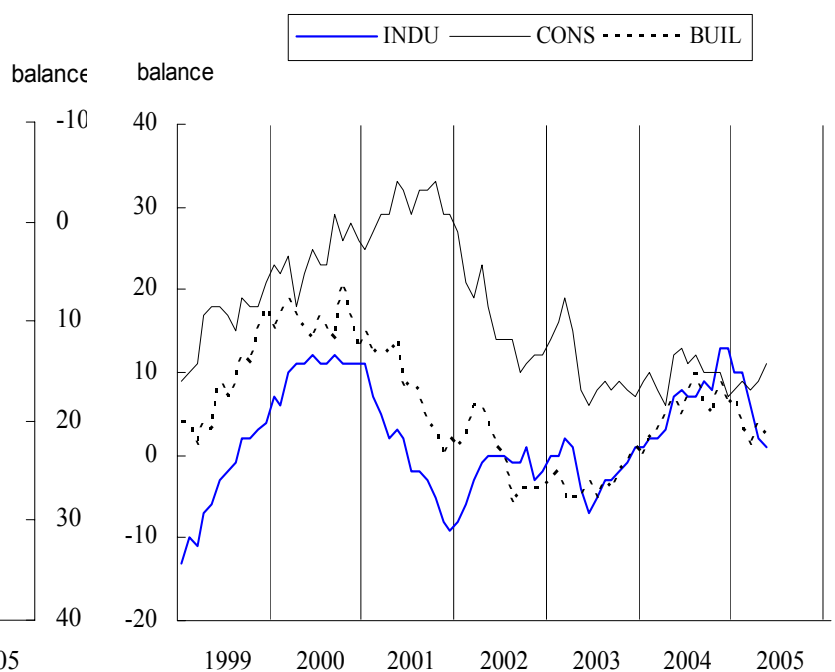
## Employment, unemployment and price expectations in the EU

According to industry managers, *employment* prospects did not change in May, while managers in the service sector saw these prospects deteriorating. Consumers were more pessimistic with regard to future *unemployment*. Regarding *prices*, consumers foresee an upward pressure on prices, while managers in industry and in the construction sector expect the opposite development.

GRAPH 7: Employment and unemployment



GRAPH 8: Price expectations



1) Unemployment expectations (Right Hand Scale)

## Results of the World Economic Survey

In April 2005, the IFO institute conducted, in co-operation with the European Commission, the latest **World Economic Survey**, which assesses world-wide economic trends through interviews with 1,118 economic experts in 91 countries (see Graphs 9 to 11). The previous survey was conducted in January of this year.

The assessments made by economic experts in the EU concerning the *present economic situation* deteriorated for the second quarter in a row. The indicator is now well below 5, which is considered to be the neutral level. These figures are in line with the downward trend observed since the beginning of 2004 concerning *expectations for the next six months*. Experts in the USA, while adjusting their views on the present economic situation upward, also expect a deterioration of the *economic situation in the next six months*.

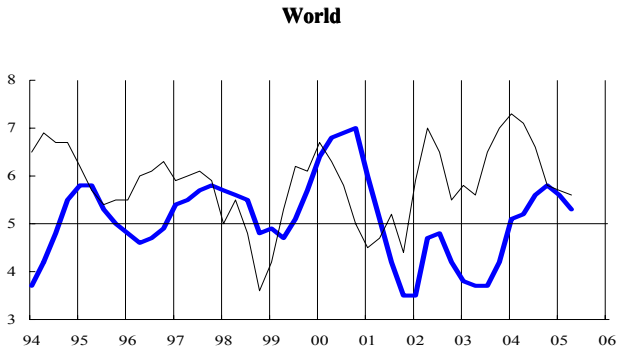
The views on *import expectations* differed between the experts in the EU and in the USA. While in the EU import expectations fell slightly and the *export expectations* showed a small improvement, in the US experts foresee a strong increase in imports coupled with a decrease, albeit smaller, of exports.

Views about the *evaluation of currencies* have not changed dramatically since mid-2003. A majority of experts world-wide considers that the *euro* has been in a position of a slight overvaluation during this period. Regarding the *US dollar*, these experts believe that the US dollar has been slightly undervalued. Similar views are held by the sub-sample of experts in the EU, although there the view of an overvalued euro is less pronounced while the view of an undervalued dollar is more pronounced.

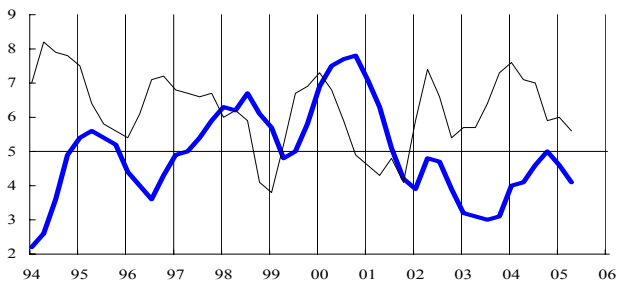
# GRAPHS 9 - 10: "World economic survey: January results" (\*)

**Graph 9: Present economic situation and expectations for the next six months**

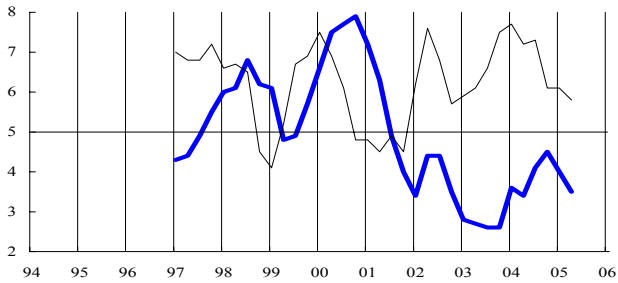
— Present economic situation      — Expectations for next 6 months



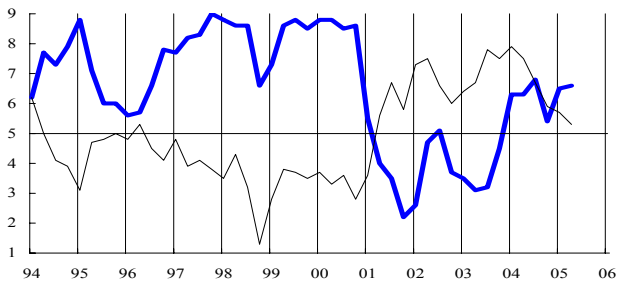
**EU**



**Euro area**

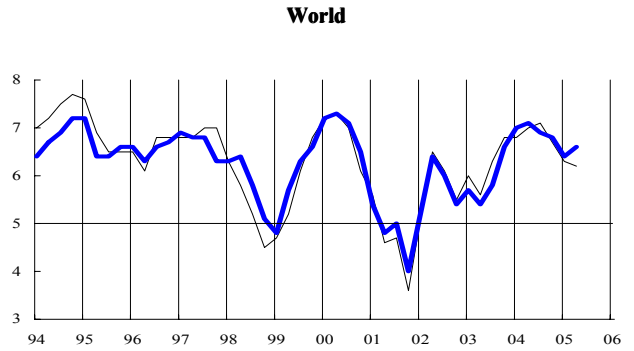


**USA**

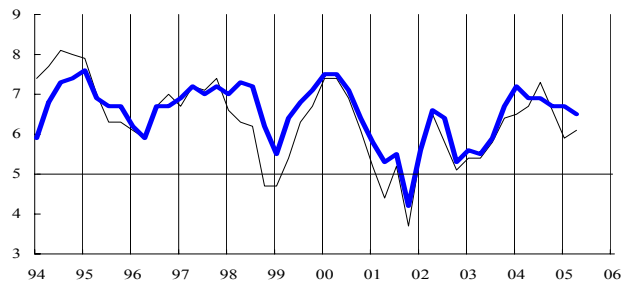


**Graph 10: Import and export expectations for the next 6 months**

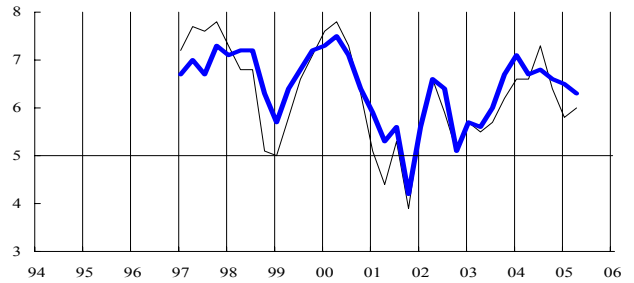
— Import expectations      — Export expectations



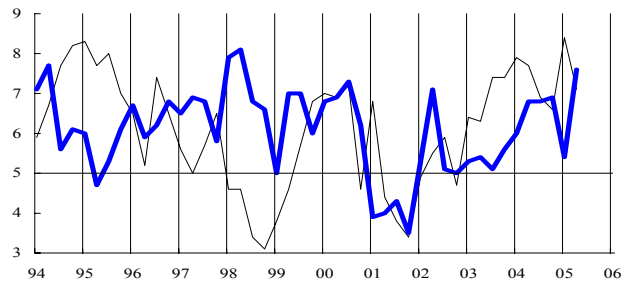
**EU**



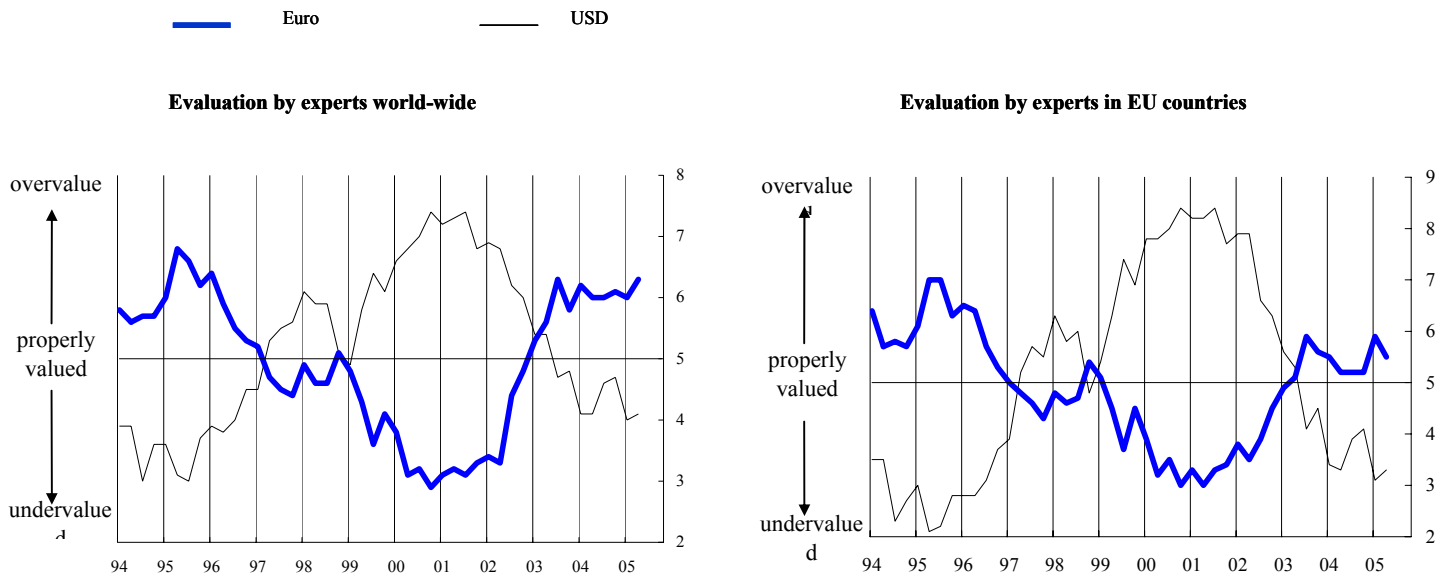
**Euro area**



**USA**



Graph 11: Evaluation of currencies



(\*) The World Economic survey is conducted by the IFO Institute on behalf of the European Commission 4 times per year (January, April, July, October) and is based on the answers of approximately 1.125 experts in more than 90 countries. The replies are 'graded': positive responses (+) receive a grade of 9, indifferent ones (=) a grade of 5, and negative ones (-) a grade of 1. Grades between 5 and 9 imply a preponderance of positive replies or increases, while grades between 1 and 5 indicate that negative replies or decreases dominate.

TABLE 1*: Indicators of confidence and economic sentiment(s.a.)		Since 01/1990 <sup>(1)</sup>																
							2004						2005					
		Min.		Ave.	Max.		June	July	Aug.	Sep.	Oct.	Nov.	Dec.	Jan.	Feb.	Mar.	Apr.	May
	Value	Date	Value	Date														
<b>EU</b>	1. Industry	-28	07-93	-8	7	12-94	-3	-3	-3	-2	-2	-3	-3	-4	-5	-7	-9	-11
	2. Services	-8	03-03	17	32	08-98	12	13	14	14	15	13	12	14	13	10	8	9
	3. Consumer	-27	03-93	-11	2	12-00	-12	-12	-12	-11	-11	-10	-10	-10	-10	-10	-11	-12
	4. Retail trade	-19	12-92	-7	4	07-90	-4	-6	-4	-7	-4	-8	-6	-5	-7	-9	-9	-9
	5. Construction	-42	10-93	-21	3	02-90	-13	-13	-13	-13	-12	-11	-11	-11	-12	-12	-12	-12
	=6. ESI	76.6	07-93	100.0	116.4	05-00	102.8	102.6	103.8	103.8	104.6	103.6	103.1	103.2	102.1	99.7	98.0	97.3
<b>Euro area</b>	1. Industry	-31	06-93	-8	6	05-00	-5	-4	-4	-3	-3	-3	-4	-5	-6	-8	-9	-11
	2. Services	-7	03-03	18	34	08-98	11	12	13	11	12	11	10	13	10	9	8	10
	3. Consumer	-29	07-93	-12	2	04-00	-14	-14	-14	-13	-13	-13	-13	-13	-13	-14	-13	-15
	4. Retail trade	-21	03-93	-9	8	08-90	-10	-9	-7	-9	-7	-10	-7	-6	-8	-10	-8	-8
	5. Construction	-44	08-96	-21	4	02-90	-15	-16	-15	-15	-14	-14	-13	-13	-14	-13	-14	-13
	=6. ESI	75.8	07-93	100.0	116.1	05-00	99.6	100.0	100.9	100.9	101.5	100.9	100.2	100.8	98.8	97.5	96.5	96.1
<b>BE</b>	1. Industry	-33	04-93	-11	5	06-00	-5	3	-1	0	0	-2	-5	-3	-6	-7	-11	-13
	2. Services	-7	03-03	13	33	03-98	12	18	8	15	17	10	11	15	14	11	12	3
	3. Consumer	-27	08-93	-6	17	12-00	-1	-4	-2	-2	-2	-4	-4	-6	-3	-1	-4	-11
	4. Retail trade	-25	05-93	-6	13	04-90	-2	-5	-3	1	-1	-3	-2	1	-2	-10	-4	-10
	5. Construction	-35	11-95	-12	10	02-00	-8	-9	-9	-5	-5	-4	-9	-6	-6	-4	-6	-5
	=6. ESI	77.0	04-93	100.0	120.2	06-00	106.1	111.2	106.1	109.7	110.0	106.3	105.1	107.5	106.6	104.3	101.3	95.6
<b>CZ</b>	1. Industry	-31	03-99	-1	27	06-00	11	9	10	10	12	12	11	7	8	7	5	4
	2. Services	35	07-03	40	47	07-02	43	40	43	41	39	36	39	37	39	38	37	37
	3. Consumer	-36	03-98	-16	1	04-01	-13	-10	-10	-12	-11	-10	-5	-4	-5	-2	-6	-3
	4. Retail trade	-1	02-99	14	26	08-02	18	20	15	25	25	23	17	17	20	19	14	15
	5. Construction	-64	06-99	-18	3	06-95	2	-5	-5	-10	-9	-5	1	3	-4	-7	-9	-8
	=6. ESI	69.6	03-99	100.0	117.6	04-01	110.7	108.4	110.6	108.3	108.2	105.0	108.2	104.7	107.5	106.5	102.0	103.2
<b>DK</b>	1. Industry	-26	12-98	-2	16	09-94	8	11	6	3	3	-3	2	3	1	1	-5	0
	2. Services	11	10-01	25	37	04-04	29	28	28	30	34	33	37	34	33	34	33	:
	3. Consumer	-11	10-90	6	17	02-95	11	11	11	13	11	13	14	14	16	17	14	14
	4. Retail trade	-6	10-01	17	37	11-94	20	20	24	24	28	26	29	28	28	31	29	:
	5. Construction	-37	12-91	-9	19	03-98	-6	-6	-5	-2	-2	2	4	2	4	3	5	8
	=6. ESI	74.5	12-98	100.0	121.2	09-94	112.7	113.4	110.6	110.6	113.1	110.8	115.7	114.5	113.8	114.7	109.3	109.3
<b>DE</b>	1. Industry	-35	04-93	-11	11	09-90	-10	-9	-8	-7	-6	-6	-6	-6	-9	-11	-13	-13
	2. Services	-23	12-02	25	52	03-99	11	12	13	12	11	11	8	11	6	5	4	6
	3. Consumer	-28	10-93	-11	6	05-00	-15	-17	-18	-15	-18	-17	-16	-12	-15	-18	-15	-14
	4. Retail trade	-44	01-03	-18	21	02-91	-28	-27	-23	-28	-23	-27	-19	-17	-22	-30	-25	-23
	5. Construction	-62	11-02	-36	3	01-91	-48	-49	-53	-52	-54	-53	-55	-50	-55	-51	-50	-47
	=6. ESI	80.5	07-93	100.0	120.2	09-90	95.7	95.4	96.5	97.0	97.1	97.1	96.8	98.4	95.5	93.7	93.4	93.7
<b>EE</b>	1. Industry	-31	07-92	4	19	03-01	17	10	10	12	7	5	6	12	15	17	13	15
	2. Services	5	11-04	22	34	11-02	21	22	20	17	14	5	11	13	17	20	23	23
	3. Consumer	-56	04-93	-24	0	03-03	-18	-14	-14	-11	-11	-7	-11	-12	-10	-5	-8	-8
	4. Retail trade	-1	04-03	16	30	04-04	23	18	20	18	21	20	14	18	20	22	25	22
	5. Construction	-46	12-99	1	33	05-05	17	9	11	13	14	16	23	24	28	31	32	33
	=6. ESI	70.6	07-92	100.0	115.7	01-03	106.8	105.4	105.0	105.4	100.7	95.0	98.6	102.3	105.8	110.5	110.2	111.0
<b>EL</b>	1. Industry	-12	09-90	1	13	03-00	4	0	-1	-3	-4	-4	-4	-3	-4	-7	-4	-9
	2. Services	-14	04-03	27	62	08-00	24	24	16	7	13	11	6	20	18	23	22	16
	3. Consumer	-44	07-03	-30	-6	04-00	-23	-26	-28	-26	-25	-27	-28	-32	-32	-33	-35	-31
	4. Retail trade	-24	06-95	1	27	03-04	17	15	16	18	14	9	8	13	5	9	10	4
	5. Construction	-53	03-05	-11	33	04-00	-13	-24	-35	-45	-37	-47	-49	-44	-48	-53	-48	-31
	=6. ESI	78.9	09-90	100.0	128.1	07-00	106.9	101.8	97.4	93.8	94.6	92.2	91.5	94.2	92.3	90.0	91.4	86.5
<b>ES</b>	1. Industry	-44	01-93	-9	7	04-00	-4	-3	-3	-2	-2	-1	-4	-1	-5	-4	-6	-7
	2. Services	10	10-04	31	56	06-98	22	16	16	17	10	13	16	15	12	14	17	27
	3. Consumer	-37	10-92	-11	6	03-00	-11	-11	-11	-13	-11	-10	-9	-9	-10	-10	-11	-11
	4. Retail trade	-36	02-93	-7	10	06-00	-5	-6	-9	-10	-11	-11	-10	-10	-12	-7	-2	-1
	5. Construction	-57	10-92	-3	42	01-99	7	5	25	18	26	22	24	17	26	28	20	15
	=6. ESI	69.9	01-93	100.0	116.7	04-00	99.8	97.3	97.3	98.2	95.4	97.4	97.7	98.4	95.3	97.6	97.7	100.8
<b>FR</b>	1. Industry	-41	06-93	-8	15	06-00	-1	-2	-2	-1	-1	-3	-1	-5	-5	-9	-10	-12
	2. Services	-22	06-93	3	25	06-90	6	10	9	9	12	10	11	11	9	8	6	7
	3. Consumer	-34	08-93	-18	4	01-01	-18	-15	-13	-11	-11	-13	-13	-17	-14	-14	-17	-21
	4. Retail trade	-37	04-97	-16	6	10-04	-3	-2	0	1	6	-1	1	-2	-3	0	1	-3
	5. Construction	-60	03-93	-17	34	10-00	2	1	3	6	5	7	8	11	11	11	8	7
	=6. ESI	75.1	06-93	100.0	119.1	04-00	106.4	107.6	108.4	109.7	110.5	108.4	109.4	105.9	106.2	104.8	102.3	101.1
<b>IE</b>	1. Industry	-23	11-01	-2	21	11-99	5	1	-13	-5	-4	-9	-7	-12	1	0	-2	-8
	2. Services	-14	05-03	16	44	08-98	-7	7	4	-12	-4	-10	4	-2	-9	-4	9	-2
	3. Consumer	-31	03-93	-4	19	01-00	-6	3	3	6	9	2	8	7	4	7	1	-1
	4. Retail trade	-21	05-03	3	24	06-00	-3	2	0	-3	1	-7	-1	-4	-8	-3	-11	-8
	5. Construction	-54	09-02	10	58	06-97	30	36	39	36	33	28	27	13	12	27	29	15
	=6. ESI	79.2	06-93	100.0	122.4	11-99	98.4	103.0	93.2	95.0	96.5	90.9	95.8	91.7	96.1	98.2	98.6	91.1
<b>IT</b>	1. Industry	-22	04-93	-4	13	07-95	-3	-1	-1	0	1	-1	-2	-2	-6	-7	-7	-9
	2. Services	-5	11-01	17	44	02-98	15	15	17	11	17	13	10	19	13	16	12	10
	3. Consumer	-38	04-93	-13	2	06-01	-19	-20	-20	-20	-18	-14	-16	-16	-18	-18	-16	-17
	4. Retail trade	-19	10-96	8	39	10-95	6	11	15	9	6	7	5	10	14	12	3	13
	5. Construction	-68	10-93	-13	21	05-90	10	13	3	2	2	5	4	6	2	-5	-3	-1
	=6. ESI	73.0	04-93	100.0	118.9	02-95	99.2	99.8	100.2	99.2	102.1	101.2	97.6	100.3	96.6	96.3	96.0	95.6
<b>CY</b>	1. Industry	-9	04-03	3	13	04-02	5	10	10	5	8	1	10	4	3	6	3	5
	2. Services	-21	09-02	4	18	03-05	12	12	7	14	17	12	11	11	13	18	15	7



TABLE 1\* (continued) : Indicators of confidence and economic sentiment (s.a.)

		Since 01/1990 <sup>(*)</sup>				2004						2005					
		Min.		Max.		June	July	Aug.	Sep.	Oct.	Nov.	Dec.	Jan.	Feb.	Mar.	Apr.	May
		Value	Date	Value	Date												
<b>LT</b>	1. Industry	-37	11-98	-15	1 07-04	-4	1	-5	-3	-1	-3	-12	-9	-7	-3	-4	-8
	2. Services	9	04-05	17	30 03-03	15	21	20	22	18	10	20	16	12	12	9	16
	3. Consumer	-32	05-01	-14	-1 10-04	-7	-7	-7	-3	-1	-2	-3	-5	-3	-5	-1	-4
	4. Retail trade	-25	09-00	-5	26 06-04	26	11	9	11	13	11	11	5	10	-5	-1	3
	5. Construction	-76	09-00	-42	-2 03-05	-16	-21	-21	-12	-11	-9	-11	-10	-5	-2	-22	-11
	=6. ESI	74.8	11-98	100.0	124.6 10-04	117.3	123.4	118.5	124.3	124.6	117.0	118.0	115.0	115.0	115.6	115.9	115.6
<b>LU</b>	1. Industry	-35	05-92	-10	26 04-95	11	14	18	17	8	-1	-7	-1	-6	2	-9	-18
	2. Services	:	:	:	:	:	:	:	:	:	:	:	:	:	:	:	:
	3. Consumer	-3	06-03	4	14 02-02	3	2	3	4	4	7	8	6	2	4	3	2
	4. Retail trade	:	:	:	:	:	:	:	:	:	:	:	:	:	:	:	:
	5. Construction	-73	03-94	-26	24 03-90	-37	-30	-28	-34	-19	-16	-10	-12	-22	-29	-20	-21
	=6. ESI	82.9	06-96	100.0	123.1 04-95	109.5	110.7	112.3	113.2	107.8	107.2	103.6	105.3	100.5	106.5	99.2	94.1
<b>HU</b>	1. Industry	-15	05-99	-3	8 12-97	0	-5	-2	-3	-5	-11	-5	-7	-12	-12	-14	-14
	2. Services	-10	10-04	1	14 03-02	0	3	-6	-5	-10	-9	-7	-6	-1	-5	-8	-4
	3. Consumer	-58	04-95	-29	0 08-02	-24	-25	-26	-24	-24	-25	-23	-21	-21	-24	-28	-30
	4. Retail trade	-28	05-05	-7	9 11-97	-9	-10	-12	-14	-19	-23	-24	-20	-20	-28	-24	-28
	5. Construction	-24	12-04	-7	11 09-98	-5	-11	-8	-10	-16	-20	-24	-19	-20	-17	-17	-17
	=6. ESI	71.9	04-05	100.0	123.5 04-98	100.8	96.7	89.2	89.8	79.7	72.9	82.1	82.7	83.1	75.2	71.9	74.9
<b>NL</b>	1. Industry	-12	05-93	-2	6 10-00	0	-1	-2	-2	-1	-2	-3	-2	-2	-1	-2	-2
	2. Services	3	06-03	17	35 12-97	4	5	8	10	8	7	8	7	11	7	10	6
	3. Consumer	-19	07-93	4	31 03-00	-6	-3	1	1	-3	-3	-8	-4	-4	-3	2	-4
	4. Retail trade	-16	12-03	12	30 10-99	-10	-11	-6	-5	-3	-9	-10	-7	-10	-6	-4	-10
	5. Construction	-25	05-03	-3	27 12-00	-17	-16	-14	-12	-7	-7	-7	-6	-5	-2	-1	-1
	=6. ESI	79.0	05-93	100.0	117.5 12-97	95.5	94.3	95.4	96.5	95.5	94.0	91.4	93.1	94.8	94.7	95.9	94.2
<b>AT</b>	1. Industry	-30	06-93	-12	8 03-90	-8	-7	-7	-7	-6	-6	-8	-7	-9	-11	-11	-10
	2. Services	0	01-02	16	30 03-98	15	16	19	17	19	16	16	13	12	9	12	10
	3. Consumer	-16	04-96	-1	11 07-00	-2	-1	-2	-3	-1	-3	-3	1	-3	-2	0	-3
	4. Retail trade	-29	03-03	-13	4 07-00	-13	-12	-14	-8	-14	-18	-12	-15	-14	-10	-9	-15
	5. Construction	-60	04-96	-30	-13 02-03	-29	-25	-24	-25	-23	-21	-16	-25	-22	-24	-24	-20
	=6. ESI	71.6	04-96	100.0	119.8 05-00	104.8	107.2	107.6	106.9	108.8	105.8	105.7	104.9	101.7	98.5	101.9	99.8
<b>PL</b>	1. Industry	-29	10-01	-14	9 09-97	-6	-5	-7	-8	-9	-10	-10	-11	-11	-11	-13	-13
	2. Services <sup>(n)</sup>	-8	03-03	0	8 02-05	4	-4	6	2	3	3	1	7	8	5	8	7
	3. Consumer	-40	08-01	-31	-18 04-05	-23	-26	-21	-25	-24	-22	-19	-20	-19	-18	-18	-21
	4. Retail trade	-19	01-02	-6	7 07-98	-4	-6	-9	-9	-9	-10	-8	-2	-6	-7	-8	-7
	5. Construction	-63	12-02	-44	-22 03-98	-40	-37	-37	-38	-32	-33	-39	-29	-32	-30	-29	-29
	=6. ESI	75.8	02-99	100.0	142.6 02-05	132.5	108.7	136.6	123.6	124.6	125.0	124.0	137.1	142.6	136.9	140.9	135.8
<b>PT</b>	1. Industry	-28	06-93	-7	7 03-98	-7	-7	-6	-8	-8	-7	-11	-9	-11	-10	-6	-10
	2. Services	-17	05-03	8	29 06-01	3	5	7	4	4	12	0	-2	5	-3	-3	1
	3. Consumer	-49	03-03	-22	-1 07-91	-31	-31	-32	-32	-34	-34	-36	-35	-34	-31	-30	-31
	4. Retail trade	-27	01-03	-7	4 01-99	-10	-6	-8	-5	-8	-11	-7	-7	-10	-7	-7	-10
	5. Construction	-56	02-03	-26	-1 12-97	-42	-44	-40	-41	-38	-34	-32	-33	-40	-34	-39	-34
	=6. ESI	73.9	06-93	100.0	113.6 05-97	93.9	94.9	95.8	97.4	94.1	97.9	92.2	90.2	92.0	91.2	95.1	93.2
<b>SI</b>	1. Industry	-21	03-99	-3	18 06-00	2	4	5	6	6	3	1	0	-2	0	-3	-3
	2. Services	12	05-05	24	32 10-02	25	23	25	22	21	23	22	21	21	14	12	12
	3. Consumer	-29	06-99	-19	-9 10-04	-19	-18	-15	-17	-9	-14	-18	-20	-13	-15	-13	-13
	4. Retail trade	3	01-01	11	23 04-99	13	11	13	10	12	13	14	13	10	8	14	14
	5. Construction	-33	06-02	-8	6 01-05	2	2	2	4	-1	-1	-1	6	2	2	-2	-4
	=6. ESI	76.8	03-99	100.0	131.3 06-00	106.8	105.1	112.7	105.6	111.6	106.9	103.9	100.8	102.0	92.1	92.6	92.2
<b>SK</b>	1. Industry	-22	12-95	5	26 05-96	6	2	11	15	11	13	2	9	13	12	11	6
	2. Services	33	03-05	48	60 06-03	41	50	47	50	44	51	52	34	38	33	37	33
	3. Consumer	-50	08-99	-31	-10 04-05	-22	-22	-22	-25	-25	-16	-12	-13	-13	-13	-10	-12
	4. Retail trade	-17	10-93	8	34 11-98	13	10	-2	5	0	3	-7	8	5	12	15	12
	5. Construction	-86	07-99	-28	18 03-97	-16	-18	-15	-14	-13	-23	-20	-12	-17	-13	-11	-11
	=6. ESI	71.2	03-99	100.0	125.5 05-96	98.7	103.5	106.3	107.6	102.8	113.2	111.7	100.4	105.4	99.5	104.8	98.2
<b>FI</b>	1. Industry	-24	01-93	2	30 10-94	11	11	10	8	5	5	5	3	4	6	-3	-2
	2. Services	-12	09-03	25	61 09-00	-1	18	16	23	31	31	30	38	33	32	25	34
	3. Consumer	6	11-01	15	23 02-00	15	12	17	15	14	14	16	13	16	17	14	14
	4. Retail trade	-17	11-00	-4	10 05-04	0	2	-4	-3	1	-6	4	-1	-8	-4	-1	1
	5. Construction	-97	09-91	-18	48 06-98	-1	0	2	-1	0	-4	4	-7	12	16	21	13
	=6. ESI	74.6	04-91	100.0	120.7 11-94	102.8	106.5	105.7	106.7	106.4	105.5	106.6	106.4	105.8	107.1	101.4	104.9
<b>SE</b>	1. Industry	-29	10-01	-5	15 05-00	6	8	4	8	5	5	4	6	0	-7	-9	-7
	2. Services	-24	01-03	16	46 12-00	29	28	26	30	38	29	23	35	30	32	31	27
	3. Consumer	-10	09-96	8	25 03-00	6	4	6	6	8	7	10	8	8	7	6	5
	4. Retail trade	-8	09-01	6	27 04-00	6	0	6	1	0	-3	0	0	2	0	1	-2
	5. Construction	-83	12-93	-38	25 01-01	-21	-9	-18	-6	-1	4	14	10	3	-3	6	6
	=6. ESI	79.0	10-01	100.0	127.1 03-00	110.6	111.6	110.8	113.2	115.2	111.2	110.0	113.8	110.0	107.0	105.1	104.4
<b>UK</b>	1. Industry	-40	02-91	-11	11 02-95	0	-4	2	-1	0	-4	-3	-4	0	-5	-10	-13
	2. Services	-20	12-02	15	37 10-97	16	16	19	27	25	19	19	10	24	3	-1	1
	3. Consumer	-28	10-92	-8	7 10-97	-5	-3	-4	-3	-2	0	0	0	0	3	0	-3
	4. Retail trade	-27	09-92	-4	20 06-04	20	5	5	-3	4	0	-3	-5	-9	-13	-19	-22
	5. Construction	-79	06-91	-20	5 08-04	3	4	5	3	-3	1	-1	-2	-3	-2	-7	-10
	=6. ESI	71.1	02-91	100.0	118.4 12-97	111.5	108.0	110.9	111.8	112.6	110.3	111.2	108.0	113.5	104.7	100.0	97.8

In the tables: (s.a.) = seasonally adjusted, (n) = not seasonally adjusted, : = not available.

(\*) Minimum, maximum and averages are calculated over the period of availability which is not necessarily 01/1990.

The economic sentiment indicator is composed of the industrial confidence indicator (40%), the service confidence indicator (30%), the consumer confidence indicator (20%), the construction confidence indicator (5%), and the retail trade confidence indicator (5%). Its long term average (1990-2003) equals 100.

The reported ESI average is based on this standardisation sample. All confidence indicators are balances.

Source: unless stated otherwise: European Commission business and consumer surveys.

TABLE 2: Monthly survey of manufacturing industry (s.a.)<sup>(a)</sup>

		Since 01/1990			2004								2005					
		Min.		Ave.	Max.		June	July	Aug.	Sep.	Oct.	Nov.	Dec.	Jan.	Feb.	Mar.	Apr.	May
		Value	Date	Value	Date													
INDUSTRIAL CONFIDENCE INDICATOR	<b>EU</b>	-28	07-93	-8	7	12-94	-3	-3	-3	-2	-2	-3	-3	-4	-5	-7	-9	-11
	<b>Euro area</b>	-31	06-93	-8	6	05-00	-5	-4	-4	-3	-3	-3	-4	-5	-6	-8	-9	-11
	<b>BE</b>	-33	04-93	-11	5	06-00	-5	3	-1	0	0	-2	-5	-3	-6	-7	-11	-13
	<b>CZ</b>	-31	03-99	-1	27	06-00	11	9	10	10	12	12	11	7	8	7	5	4
	<b>DK</b>	-26	12-98	-2	16	09-94	8	11	6	3	3	-3	2	3	1	1	-5	0
	<b>DE</b>	-35	04-93	-11	11	09-90	-10	-9	-8	-7	-6	-6	-6	-6	-9	-11	-13	-13
	<b>EE</b>	-31	07-92	4	19	03-01	17	10	10	12	7	5	6	12	15	17	13	15
	<b>EL</b>	-12	09-90	1	13	03-00	4	0	-1	-3	-4	-4	-4	-3	-4	-7	-4	-9
	<b>ES</b>	-44	01-93	-9	7	04-00	-4	-3	-3	-2	-2	-1	-4	-1	-5	-4	-6	-7
	<b>FR</b>	-41	06-93	-8	15	06-00	-1	-2	-2	-1	-1	-3	-1	-5	-5	-9	-10	-12
	<b>IE</b>	-23	11-01	-2	21	11-99	5	1	-13	-5	-4	-9	-7	-12	1	0	-2	-8
	<b>IT</b>	-22	04-93	-4	13	07-95	-3	-1	-1	0	1	-1	-2	-2	-6	-7	-7	-9
	<b>CY</b>	-9	04-03	3	13	04-02	5	10	10	5	8	1	10	4	3	6	3	5
	<b>LV</b>	-45	04-93	-11	7	05-04	4	3	3	4	3	3	2	2	3	3	4	5
	<b>LT</b>	-37	11-98	-15	1	07-04	-4	1	-5	-3	-1	-3	-12	-9	-7	-3	-4	-8
	<b>LU</b>	-35	05-92	-10	26	04-95	11	14	18	17	8	-1	-7	-1	-6	2	-9	-18
	<b>HU</b>	-15	05-99	-3	8	12-97	0	-5	-2	-3	-5	-11	-5	-7	-12	-12	-14	-14
	<b>NL</b>	-12	05-93	-2	6	10-00	0	-1	-2	-2	-1	-2	-3	-2	-2	-1	-2	-2
	<b>AT</b>	-30	06-93	-12	8	03-90	-8	-7	-7	-7	-6	-6	-8	-7	-9	-11	-11	-10
	<b>PL</b>	-29	10-01	-14	9	09-97	-6	-5	-7	-8	-9	-10	-10	-11	-11	-11	-13	-13
<b>PT</b>	-28	06-93	-7	7	03-98	-7	-7	-6	-8	-8	-7	-11	-9	-11	-10	-6	-10	
<b>SI</b>	-21	03-99	-3	18	06-00	2	4	5	6	6	3	1	0	-2	0	-3	-3	
<b>SK</b>	-22	12-95	5	26	05-96	6	2	11	15	11	13	2	9	13	12	11	6	
<b>FI</b>	-24	01-93	2	30	10-94	11	11	10	8	5	5	5	3	4	6	-3	-2	
<b>SE</b>	-29	10-01	-5	15	05-00	6	8	4	8	5	5	4	6	0	-7	-9	-7	
<b>UK</b>	-40	02-91	-11	11	02-95	0	-4	2	-1	0	-4	-3	-4	0	-5	-10	-13	
PRODUCTION EXPECTATIONS	<b>EU</b>	-16	11-92	6	23	12-94	13	10	11	13	13	12	10	9	9	7	5	4
	<b>Euro area</b>	-18	12-92	5	21	12-94	10	8	8	11	11	10	9	7	6	6	4	2
Component of the industrial confidence indicator	<b>BE</b>	-36	04-93	-3	16	12-94	2	9	8	7	8	6	2	0	0	3	3	-1
	<b>CZ</b>	-26	05-93	22	61	05-95	28	22	21	30	34	33	28	19	22	24	22	26
	<b>DK</b>	-23	12-98	10	30	02-98	16	21	17	9	11	10	16	14	10	17	4	12
	<b>DE</b>	-26	11-92	1	20	12-94	4	3	3	6	7	5	2	2	2	0	-2	-3
	<b>EE</b>	-70	04-92	19	68	03-02	25	19	20	17	20	13	19	24	37	38	25	32
	<b>EL</b>	3	02-91	26	44	02-00	23	18	16	14	20	20	23	22	23	19	22	14
	<b>ES</b>	-19	01-93	5	17	12-00	7	6	3	13	8	12	7	9	3	9	12	9
	<b>FR</b>	-30	07-93	6	27	10-00	14	11	12	14	11	11	16	9	9	7	3	3
	<b>IE</b>	-22	11-01	9	35	11-99	16	12	-2	-10	1	-4	3	-10	24	1	7	-3
	<b>IT</b>	-12	12-92	14	31	12-94	16	12	18	17	19	18	16	14	14	10	11	9
	<b>CY</b>	1	05-02	14	34	12-04	13	14	17	15	14	17	34	9	5	19	10	23
	<b>LV</b>	-21	04-93	15	41	03-02	16	18	20	21	19	21	21	18	19	19	19	23
	<b>LT</b>	-22	04-94	11	35	08-97	21	21	21	21	19	22	8	6	6	16	26	10
	<b>LU</b>	-42	10-91	-4	28	04-95	16	27	24	23	15	6	-2	16	14	15	0	-10
	<b>HU</b>	-8	05-05	13	34	12-97	10	1	10	12	2	-5	7	6	-3	-6	-6	-8
	<b>NL</b>	-4	04-93	6	15	11-99	8	3	-1	4	5	5	2	2	5	8	6	6
	<b>AT</b>	-19	06-93	4	18	11-03	9	7	10	9	13	11	6	9	6	11	9	11
	<b>PL</b>	-4	10-01	20	44	02-03	26	24	26	20	21	17	17	16	17	17	16	16
	<b>PT</b>	-11	03-93	5	21	01-97	4	1	0	2	0	4	0	-5	-3	0	10	1
	<b>SI</b>	10	10-01	23	42	06-00	28	28	39	40	38	24	28	30	26	29	24	28
<b>SK</b>	-12	12-95	31	62	12-97	47	4	38	53	43	46	6	15	38	36	37	27	
<b>FI</b>	-26	06-91	13	44	07-04	44	44	33	34	28	35	28	27	20	30	14	10	
<b>SE</b>	-19	05-91	15	46	05-00	38	35	28	37	29	30	35	38	23	9	12	18	
<b>UK</b>	-38	02-91	5	33	02-95	16	7	18	14	18	13	3	8	16	9	5	0	
ORDER BOOKS	<b>EU</b>	-50	07-93	-20	1	02-95	-15	-12	-12	-12	-11	-13	-11	-12	-15	-17	-20	-22
	<b>Euro area</b>	-55	07-93	-19	5	06-00	-16	-12	-13	-12	-11	-12	-12	-11	-15	-17	-19	-21
Component of the industrial confidence indicator	<b>BE</b>	-51	05-93	-20	11	06-00	-11	-4	-9	-7	-6	-9	-11	-9	-18	-17	-23	-26
	<b>CZ</b>	-50	12-98	-7	30	01-01	4	5	5	5	5	4	5	3	3	-3	-3	-6
	<b>DK</b>	-41	04-99	-6	32	12-94	9	10	6	6	4	-10	-2	2	3	-5	-7	-8
	<b>DE</b>	-61	07-93	-24	12	07-90	-22	-19	-19	-17	-16	-15	-12	-13	-17	-19	-22	-22
	<b>EE</b>	-43	10-92	0	29	06-01	13	1	4	10	-2	1	2	7	5	10	10	6
	<b>EL</b>	-30	12-93	-13	7	05-98	-5	-9	-10	-12	-17	-18	-20	-17	-21	-24	-20	-24
	<b>ES</b>	-65	01-93	-16	11	07-98	-9	-5	-4	-4	-1	-2	-7	-3	-8	-10	-14	-14
	<b>FR</b>	-64	06-93	-16	27	06-00	-11	-10	-10	-12	-11	-13	-14	-12	-14	-19	-17	-21
	<b>IE</b>	-36	06-93	-7	24	12-99	-4	-22	-32	-8	-6	-12	-10	-13	-14	2	-9	-7
	<b>IT</b>	-47	06-93	-16	13	02-95	-17	-9	-13	-10	-12	-12	-11	-12	-21	-20	-22	-24
	<b>CY</b>	-39	02-03	-20	-3	10-03	-12	-4	-10	-9	-8	-13	-12	-8	-12	-6	-4	-8
	<b>LV</b>	-79	07-93	-41	-7	12-03	-13	-16	-15	-14	-17	-17	-19	-18	-16	-14	-13	-15
	<b>LT</b>	-79	11-98	-43	-9	11-93	-26	-20	-34	-29	-22	-27	-40	-29	-25	-24	-30	-29
	<b>LU</b>	-64	02-92	-18	34	12-97	10	9	19	18	11	-4	-7	-12	-20	-11	-16	-23
	<b>HU</b>	-40	03-03	-19	0	04-98	-15	-15	-15	-15	-15	-20	-20	-24	-28	-23	-33	-31
	<b>NL</b>	-25	01-93	-8	6	11-00	-6	-4	-3	-6	-5	-6	-6	-4	-4	-5	-8	-7
	<b>AT</b>	-57	04-96	-25	11	03-90	-26	-23	-24	-23	-21	-22	-23	-25	-27	-32	-31	-27
	<b>PL</b>	-77	01-02	-58	8	09-97	-46	-41	-47	-42	-45	-43	-46	-47	-48	-47	-50	-54
	<b>PT</b>	-52	07-93	-19	9	03-98	-16	-13	-10	-32	-19	-19	-29	-15	-21	-24	-26	-26
	<b>SI</b>	-51	03-99	-19	12	06-00	-13	-10	-13	-7	-9	-7	-11	-14	-19	-14	-18	-19
<b>SK</b>	-70	03-99	-8	49	09-94	-28	0	-2	-6	-4	0	4	10	5	3	-8	-8	
<b>FI</b>	-70	09-91	-13	40	11-94	-1	0	-1	-2	2	-4	2	1	6	2	0	-4	
<b>SE</b>	-67	03-92	-23	25	12-94	-5	-6	-9	-6	-9	-5	-8	-7	-11	-14	-20	-22	
<b>UK</b>	-62	07-91	-22	11	02-95	-10	-7	0	-4	-4	-13	-5	-13	-7				

TABLE 2: (continued) Monthly survey of manufacturing industry (s.a.)<sup>(a)</sup>

		Since 01/1990						2004						2005					
		Min.		Ave.		Max.		June	July	Aug.	Sep.	Oct.	Nov.	Dec.	Jan.	Feb.	Mar.	Apr.	May
		Value	Date	Value	Date	Value	Date												
STOCKS OF FINISHED PRODUCTS <sup>(b)</sup>	<b>EU</b>	3	12-94	11	23	06-93	8	8	8	8	8	8	8	9	9	12	13	14	
	<b>Euro area</b>	2	11-94	11	24	04-93	8	8	7	8	7	8	9	9	10	12	13	14	
Component of the industrial confidence indicator	<b>BE</b>	-4	02-95	9	26	10-01	4	-3	1	1	3	2	5	0	1	6	12	11	
	<b>CZ</b>	-12	04-00	17	46	08-93	0	-1	-4	6	2	0	0	3	0	0	5	9	
	<b>DK</b>	-7	03-94	10	28	06-99	0	-1	5	6	6	8	9	5	3	10	11	4	
	<b>DE</b>	-9	09-90	10	25	07-93	11	10	8	9	8	8	9	9	11	13	13	15	
	<b>EE</b>	-16	05-92	7	39	06-93	-12	-10	-7	-10	-2	1	2	-5	-2	-4	-5	-5	
	<b>EL</b>	1	06-94	12	22	09-90	7	8	10	11	13	14	13	13	13	15	16	18	
	<b>ES</b>	-1	11-02	15	47	01-93	9	10	10	16	13	12	11	10	11	12	16	14	
	<b>FR</b>	-2	04-00	14	34	06-93	7	8	8	6	4	6	6	12	10	15	16	17	
	<b>IE</b>	-13	12-99	6	23	11-93	-3	-13	6	-4	6	11	12	12	7	2	5	15	
	<b>IT</b>	-1	07-95	8	17	10-90	7	6	8	7	5	7	10	9	10	11	11	11	
	<b>CY</b>	-34	09-01	-16	1	11-04	-15	-18	-21	-10	-17	1	-7	-11	-15	-6	-3	-1	
	<b>LV</b>	-12	03-04	8	43	07-93	-7	-6	-4	-5	-5	-4	-5	-6	-5	-4	-5	-7	
	<b>LT</b>	-16	01-95	13	49	01-94	8	-3	2	2	-1	3	4	3	2	1	7	4	
	<b>LU</b>	-22	03-95	8	31	03-02	-8	-6	-10	-10	1	4	11	8	12	0	10	19	
	<b>HU</b>	-7	11-03	3	15	12-98	-4	0	1	4	4	7	2	3	4	8	3	2	
	<b>NL</b>	-1	12-94	5	11	06-91	3	4	2	4	4	5	4	5	5	5	5	4	
	<b>AT</b>	4	03-90	14	26	04-96	7	5	6	7	8	6	6	6	7	12	11	12	
	<b>PL</b>	-11	10-94	3	20	02-99	-2	-2	1	2	3	2	2	3	2	3	4	3	
	<b>PT</b>	-7	09-04	8	25	06-93	11	8	8	-7	4	5	3	8	8	6	2	5	
	<b>SI</b>	-1	06-00	14	28	02-96	10	8	10	15	11	8	15	16	14	15	16	17	
<b>SK</b>	-27	02-01	9	55	05-94	0	-2	4	3	6	8	3	-3	4	2	-4	1		
<b>FI</b>	-20	04-95	4	31	01-96	10	11	2	9	14	15	15	18	14	13	23	13		
<b>SE</b>	3	03-00	17	37	11-01	15	6	7	9	6	10	16	13	12	15	20	17		
<b>UK</b>	6	03-04	17	32	11-98	7	13	13	14	13	12	7	8	8	13	15	17		
PRODUCTION TREND OBSERVED IN RECENT MONTHS	<b>EU</b>	-23	01-93	-1	19	01-95	6	9	7	7	6	3	6	5	4	-1	-4	-3	
	<b>Euro area</b>	-26	04-93	-2	17	01-95	4	7	4	4	2	0	4	4	2	-3	-5	-4	
	<b>BE</b>	-20	02-93	-1	16	05-97	2	11	3	5	5	-6	-1	4	-4	-1	-4	-6	
	<b>CZ</b>	-32	10-98	12	42	11-00	22	31	21	11	20	22	31	24	20	8	8	11	
	<b>DK</b>	-21	04-99	10	41	09-94	25	21	15	13	15	12	-1	2	3	-1	1	8	
	<b>DE</b>	-32	02-02	-4	22	12-90	2	6	0	-1	-5	-7	3	-1	-3	-8	-9	-8	
	<b>EE</b>	-24	03-99	13	56	06-01	34	28	28	21	15	12	10	14	9	22	30	27	
	<b>EL</b>	-5	10-90	14	36	01-00	24	21	18	14	6	4	5	10	6	7	-3	3	
	<b>ES</b>	-44	04-93	0	21	04-95	4	6	11	8	9	-1	3	6	5	2	-6	1	
	<b>FR</b>	-38	07-93	4	36	01-95	15	13	11	9	14	14	7	16	15	9	5	3	
	<b>IE</b>	-25	10-01	6	38	03-00	9	9	-15	22	-2	6	-17	-4	9	-3	10	6	
	<b>IT</b>	-36	06-93	-10	14	03-95	-15	-9	-6	-5	-8	-10	-6	-10	-13	-15	-16	-16	
	<b>CY</b>	-36	04-03	-10	12	04-05	-8	-4	-3	-27	8	-14	-3	-7	-7	-5	12	1	
	<b>LV</b>	-49	04-93	2	29	06-01	10	9	14	10	7	7	13	10	9	11	13	9	
	<b>LT</b>	-36	07-94	0	34	04-98	6	14	12	2	9	11	11	7	7	-6	-16	8	
	<b>LU</b>	-41	04-92	-2	32	04-95	22	30	30	27	12	19	21	17	12	-7	-2	-19	
	<b>HU</b>	-30	06-99	-1	27	04-98	7	9	8	2	3	-4	-6	-9	-11	-16	-23	-13	
	<b>NL</b>	-12	05-93	3	14	10-97	10	11	5	1	3	-1	2	3	-2	-1	3	4	
	<b>AT</b>	-28	06-93	5	27	03-90	11	17	13	21	16	16	12	14	7	4	4	6	
	<b>PL</b>	-18	07-96	0	23	04-04	9	14	6	6	12	6	8	21	5	-3	-12	-3	
	<b>PT</b>	-18	01-93	-2	15	08-94	-3	8	-1	-14	-16	-9	-3	1	-5	-10	-18	-5	
	<b>SI</b>	-20	02-99	8	39	05-00	6	13	13	9	12	6	11	7	1	2	8	6	
<b>SK</b>	-30	12-96	17	78	12-03	8	49	27	-5	46	46	69	17	27	24	30	34		
<b>FI</b>	-28	06-91	11	53	12-04	28	13	32	35	34	30	53	27	42	8	13	5		
<b>SE</b>	-28	07-91	9	48	12-94	25	28	29	31	24	24	18	15	17	13	12	8		
<b>UK</b>	-46	06-91	-2	34	03-95	10	9	19	19	16	7	14	3	13	9	-7	-4		
EXPORT ORDER BOOKS	<b>EU</b>	-45	06-93	-20	1	02-95	-12	-9	-10	-10	-10	-11	-11	-12	-12	-15	-19	-20	
	<b>Euro area</b>	-52	06-93	-21	3	06-00	-13	-9	-10	-10	-10	-11	-12	-10	-12	-15	-18	-19	
	<b>BE</b>	-56	05-93	-22	7	06-00	-5	-4	-6	-5	-1	-4	-10	-8	-22	-20	-30	-32	
	<b>CZ</b>	-41	12-98	-3	26	09-00	2	3	5	5	4	1	4	1	0	-10	-9	-8	
	<b>DK</b>	-39	04-99	-4	25	09-94	10	12	7	8	2	-8	1	-1	-4	-6	-8	-8	
	<b>DE</b>	-60	08-93	-28	0	02-90	-17	-11	-12	-11	-11	-11	-11	-9	-8	-12	-14	-13	
	<b>EE</b>	-37	03-99	1	25	03-01	-2	0	-2	10	0	-5	-5	-1	0	-4	3	0	
	<b>EL</b>	-36	05-03	-15	13	03-95	-7	-11	-14	-18	-21	-21	-24	-17	-18	-19	-21	-20	
	<b>ES</b>	-55	01-93	-19	6	05-95	-16	-15	-9	-15	-10	-15	-11	-9	-15	-15	-23	-22	
	<b>FR</b>	-65	07-93	-13	36	06-00	-5	-1	-2	-4	-5	-7	-9	-8	-9	-13	-14	-20	
	<b>IE</b>	-53	09-93	-7	38	04-00	18	-34	-42	-20	-3	2	-8	-2	-20	-1	-27	-5	
	<b>IT</b>	-43	09-92	-18	19	02-95	-18	-12	-17	-12	-14	-15	-16	-15	-20	-23	-24	-26	
	<b>CY</b>	-53	05-03	-27	5	05-05	-21	-13	-14	-10	-11	-13	-22	-19	-34	-4	-18	5	
	<b>LV</b>	-59	12-98	-37	-15	12-03	-19	-20	-22	-20	-21	-23	-21	-21	-20	-19	-23	-21	
	<b>LT</b>	-65	04-99	-37	-14	06-01	-25	-20	-38	-29	-23	-32	-45	-31	-27	-31	-29	-29	
	<b>LU</b>	-75	11-91	-23	45	04-00	4	-4	6	5	-2	-18	-20	-25	-26	-28	-27	-41	
	<b>HU</b>	-44	12-02	-15	7	02-98	-19	-16	-19	-19	-22	-21	-27	-24	-30	-29	-32	-30	
	<b>NL</b>	-24	01-93	-6	11	09-00	-1	3	4	-1	-2	-2	-2	1	-1	-3	-3	-6	
	<b>AT</b>	-58	04-96	-34	-1	03-90	-33	-32	-31	-35	-34	-31	-34	-35	-37	-39	-41	-39	
	<b>PL</b>	-75	05-99	-57	13	07-97	-48	-47	-49	-50	-49	-50	-52	-52	-52	-54	-53	-59	
	<b>PT</b>	-59	04-93	-16	22	01-95	-18	-18	-19	-22	-21	-17	-16	-20	-18	-22	-25	-28	
	<b>SI</b>	-53	05-99	-16	15	06-00	-11	-6	-5	0	0	-4	-5	-11	-13	-13	-13	-14	
<b>SK</b>	-57	03-99	-9	53	01-94	-25	-17	-21	-5	-5	-4	4	6	7	1	-9	-8		
<b>FI</b>	-43	01-99	-8	42	01-95	-7	-2	-2	-8	-2	-6	1	-3	-2	-6	-3	-7		
<b>SE</b>	-45	12-01	5	45	08-91	5	8	-1	8	-2	1	1	1	-7	-19	-19	-30		
<b>UK</b>	-55	10-98	-22	19	04-95	-10	-10	-4	-5	-11	-11	-6	-17	-8					

TABLE 2: (continued) **Monthly survey of manufacturing industry (s.a.)** <sup>(a)</sup>

		Since 01/1990						2004						2005					
		Min.		Ave.		Max.		June	July	Aug.	Sep.	Oct.	Nov.	Dec.	Jan.	Feb.	Mar.	Apr.	May
		Value	Date	Value	Date	Value	Date												
EMPLOYMENT EXPECTATIONS	<b>EU</b>	-39	06-93	-15	2	11-00	-13	-12	-12	-12	-11	-12	-14	-12	-12	-11	-14	-14	
	<b>Euro area</b>	-42	06-93	-14	4	11-00	-13	-13	-14	-13	-12	-12	-14	-12	-12	-12	-14	-14	
	<b>BE</b>	-26	09-93	-9	9	09-00	-6	-4	-5	-8	-8	-11	-10	-10	-8	-10	-12	-14	
	<b>CZ</b>	-58	06-99	-26	2	03-01	-6	-6	-5	-4	-5	-4	-3	-5	-7	-7	-8	-10	
	<b>DK</b>	-23	06-93	-3	13	03-98	3	5	0	-1	-4	-6	-9	0	-3	3	-10	-4	
	<b>DE</b>	-52	06-93	-18	8	02-90	-17	-18	-18	-14	-15	-14	-18	-17	-17	-21	-21	-19	
	<b>EE</b>	-78	04-92	-13	16	03-05	7	2	3	-1	-5	-1	2	8	11	16	14	13	
	<b>EL</b>	-12	12-04	-2	12	05-02	-3	2	1	1	-7	-2	-12	-8	-6	-3	-11	-9	
	<b>ES</b>	-53	06-93	-9	9	03-01	0	-7	-11	-12	-13	-11	-9	-4	-2	-3	2	-1	
	<b>FR</b>	-50	09-93	-17	12	09-00	-17	-18	-19	-20	-15	-19	-20	-17	-18	-12	-23	-22	
	<b>IE</b>	-34	12-92	-10	16	09-00	-8	-22	-18	-16	-8	-21	-13	-10	-6	-5	-1	4	
	<b>IT</b>	-30	08-96	-4	11	11-00	-4	-3	-5	-3	0	0	-5	-2	-2	-3	-3	-3	
	<b>CY</b>	-15	04-02	10	41	10-04	5	29	7	4	41	11	10	33	11	8	20	10	
	<b>LV</b>	-51	04-93	-9	8	10-04	3	3	5	6	8	7	5	6	3	4	5	7	
	<b>LT</b>	-59	04-94	-29	4	03-03	4	-3	-3	-1	-5	-2	-11	-12	-5	2	1	-10	
	<b>LU</b>	-55	12-91	-27	1	09-01	-23	-14	-15	-13	-23	-20	-16	-20	-19	-26	-16	-31	
	<b>HU</b>	-60	12-91	-17	10	10-97	-15	-13	-7	-6	-12	-16	-10	-13	-14	-13	-16	-21	
	<b>NL</b>	-30	06-93	-8	15	06-90	-12	-7	-11	-10	-12	-9	-11	-9	-9	-10	-11	-12	
	<b>AT</b>	-29	01-96	-10	6	09-00	-4	-5	-3	-5	-2	-4	-4	-3	-3	-6	-6	-10	
	<b>PL</b>	-55	12-99	-25	-4	03-05	-11	-11	-13	-8	-5	-7	-6	-8	-8	-4	-7	-6	
	<b>PT</b>	-35	06-93	-15	-2	02-90	-23	-21	-19	-22	-24	-20	-23	-19	-25	-22	-22	-21	
<b>SI</b>	-42	10-95	-23	-10	07-04	-14	-10	-13	-13	-14	-18	-19	-18	-18	-18	-18	-18		
<b>SK</b>	-56	06-99	-24	2	06-96	-30	-22	-18	-13	-13	-12	-18	-12	-14	-16	-18	-17		
<b>FI</b>	-60	06-91	-16	15	12-00	-28	-13	-13	-19	-18	-13	-14	-21	-6	-6	-3	-13		
<b>SE</b>	-51	06-92	-19	23	12-94	-19	-19	-10	-11	-8	-11	-14	-16	-18	-17	-23	-18		
<b>UK</b>	-50	03-91	-20	2	06-97	-11	-8	-3	-5	-11	-13	-12	-12	-12	-8	-12	-16		
SELLING-PRICE EXPECTATIONS	<b>EU</b>	-13	01-99	5	26	02-95	8	7	7	9	8	13	13	10	10	6	2	1	
	<b>Euro area</b>	-11	12-98	5	25	02-95	6	6	5	8	8	12	13	9	9	5	1	1	
	<b>BE</b>	-18	02-96	2	26	12-94	11	10	6	14	16	15	13	14	4	2	0	-6	
	<b>CZ</b>	-6	12-98	21	71	03-95	24	21	16	13	20	19	10	11	10	11	5	2	
	<b>DK</b>	-12	11-01	-1	12	11-04	9	8	3	1	4	12	8	10	0	2	-2	-1	
	<b>DE</b>	-8	12-93	6	23	02-95	7	7	8	9	9	12	15	15	11	6	2	-2	
	<b>EE</b>	-28	03-99	16	86	04-92	26	26	19	21	20	22	26	22	19	12	14	16	
	<b>EL</b>	-4	01-99	18	41	10-90	14	12	12	11	11	11	9	9	10	9	7	8	
	<b>ES</b>	-18	04-93	3	35	04-95	3	4	3	4	5	12	15	8	7	7	-4	1	
	<b>FR</b>	-26	01-99	0	24	02-90	0	-4	-2	1	0	12	13	0	7	3	-1	2	
	<b>IE</b>	-25	11-92	-3	29	11-03	1	4	5	11	-2	1	-4	-5	2	-1	-8	12	
	<b>IT</b>	-10	12-98	11	40	03-95	10	11	9	14	14	15	15	11	11	7	9	7	
	<b>CY</b>	-9	10-01	6	38	10-03	23	7	9	5	-5	7	6	3	-2	5	7	3	
	<b>LV</b>	-17	12-98	16	50	07-94	23	21	18	19	24	24	28	24	19	17	17	15	
	<b>LT</b>	-20	01-00	15	75	11-93	2	9	6	-2	-4	-5	-7	-8	1	7	7	-3	
	<b>LU</b>	-50	08-91	-2	53	12-94	5	13	17	12	26	31	22	10	3	13	3	-3	
	<b>HU</b>	14	05-05	29	51	01-01	31	30	28	29	31	31	24	23	24	16	16	14	
	<b>NL</b>	-7	01-99	4	20	12-94	9	12	6	8	13	10	9	11	1	1	-4	-1	
	<b>AT</b>	-23	03-96	-1	17	03-90	4	5	3	9	11	10	9	6	2	-1	0	-3	
	<b>PL</b>	-6	06-02	15	46	01-93	26	20	17	13	12	1	-1	3	4	-4	-3	-4	
	<b>PT</b>	-9	05-03	8	29	10-90	-1	3	4	4	2	-2	0	-7	3	1	-2	-5	
<b>SI</b>	-24	04-99	-8	5	01-01	-3	-2	-1	3	4	3	1	0	0	-3	-8	-10		
<b>SK</b>	-33	03-01	31	81	04-95	19	26	20	9	16	6	20	-12	0	28	12	3		
<b>FI</b>	-34	03-96	2	49	08-94	9	4	13	13	5	14	14	17	31	15	4	3		
<b>SE</b>	-20	11-96	5	37	12-94	21	15	22	16	17	20	19	21	13	1	2	-2		
<b>UK</b>	-30	01-99	0	29	02-95	7	7	12	9	3	15	13	15	16	15	5	-1		
(a) The indicator is the arithmetic aver		-50.1	07-93	-19.8	1.4	02-95	-14.8	-11.5	-11.5	-11.5	-11	-12.8	-11.4	-11.9	-14.8	-16.8	-19.9	-21.5	
(b) Highest figure is considered as mii		-54.6	07-93	-19	5.1	06-00	-15.6	-12.1	-12.8	-12.4	-11.4	-12.3	-11.6	-11.2	-15.4	-17.4	-19.1	-20.5	
		-50.7	05-93	-20.4	10.7	06-00	-11	-3.6	-9.3	-6.9	-5.5	-8.5	-11.1	-9.1	-17.5	-17.2	-22.9	-26	

TABLE 3: Monthly survey of services (s.a.)<sup>(a)</sup>

		Since 01/1990						2004					2005						
		Min.		Ave.		Max.		June	July	Aug.	Sep.	Oct.	Nov.	Dec.	Jan.	Feb.	Mar.	Apr.	May
		Value	Date	Value	Date	Value	Date												
SERVICES CONFIDENCE INDICATOR	EU	-8	03-03	17	32	08-98	12	13	14	14	15	13	12	14	13	10	8	8	9
	<b>Euro area</b>	-7	03-03	18	34	08-98	11	12	13	11	12	11	10	13	10	9	8	8	10
	BE	-7	03-03	13	33	03-98	12	18	8	15	17	10	11	15	14	11	12	3	
	CZ	35	07-03	40	47	07-02	43	40	43	41	39	36	39	37	39	38	37	37	37
	DK	11	10-01	25	37	04-04	29	28	28	30	34	33	37	34	33	34	33		
	DE	-23	12-02	25	52	03-99	11	12	13	12	11	11	8	11	6	5	4	6	6
	EE	5	11-04	22	34	11-02	21	22	20	17	14	5	11	13	17	20	23	23	23
	EL	-14	04-03	27	62	08-00	24	24	16	7	13	11	6	20	18	23	22	16	16
	ES	10	10-04	31	56	06-98	22	16	16	17	10	13	16	15	12	14	17	27	27
	FR	-22	06-93	3	25	06-90	6	10	9	9	12	10	11	11	9	8	6	7	7
	IE	-14	05-03	16	44	08-98	-7	7	4	-12	-4	-10	4	-2	-9	-4	9	-2	7
	IT	-5	11-01	17	44	02-98	15	15	17	11	17	13	10	19	13	16	12	10	10
	CY	-21	09-02	4	18	03-05	12	12	7	14	17	12	11	11	13	18	15	7	7
	LV	7	03-02	11	14	03-05	8	9	10	12	9	12	12	11	12	14	13	12	12
	LT	9	04-05	17	30	03-03	15	21	20	22	18	10	20	16	12	12	9	16	16
	HU	-10	10-04	1	14	03-02	0	3	-6	-5	-10	-9	-7	-6	-1	-5	-8	-4	-4
	NL	3	06-03	17	35	12-97	4	5	8	10	8	7	8	7	11	7	10	6	6
	AT	0	01-02	16	30	03-98	15	16	19	17	19	16	16	13	12	9	12	10	10
	PL <sup>(n)</sup>	-8	03-03	0	8	02-05	4	-4	6	2	3	3	1	7	8	5	8	7	7
	PT	-17	05-03	8	29	06-01	3	5	7	4	4	12	0	-2	5	-3	-3	1	1
SI	12	05-05	24	32	10-02	25	23	25	22	21	23	22	21	21	14	12	12	12	
SK	33	03-05	48	60	06-03	41	50	47	50	44	51	52	34	38	33	37	33	33	
FI	-12	09-03	25	61	09-00	-1	18	16	23	31	31	30	38	33	32	25	34	34	
SE	-24	01-03	16	46	12-00	29	28	26	30	38	29	23	35	30	32	31	27	27	
UK	-20	12-02	15	37	10-97	16	16	19	27	25	19	19	10	24	3	-1	1	1	
ASSESSMENT OF BUSINESS SITUATION	EU	-19	03-03	14	37	06-00	6	8	9	7	11	9	9	12	8	0	0	1	
	<b>Euro area</b>	-18	03-03	16	40	09-00	6	8	9	6	9	8	8	12	6	1	1	1	
	BE	-27	12-01	-3	28	01-98	-3	3	-2	1	3	-2	-5	0	-5	-2	-6	-16	
	CZ	53	07-03	60	72	07-02	63	59	57	58	55	55	59	57	60	58	58	60	60
	DK	4	05-03	22	41	04-00	22	19	19	25	29	24	29	27	27	28	29		
	DE	-35	01-03	26	63	12-98	8	13	16	12	11	11	8	10	5	-1	2	3	
	EE	1	11-04	26	48	11-02	34	27	21	14	12	1	9	14	19	24	27	29	
	EL	-42	04-03	11	58	09-00	29	21	15	7	16	11	0	19	22	28	26	17	
	ES	4	10-04	31	67	04-00	14	10	11	9	4	8	10	9	6	5	8	21	
	FR	-35	09-96	-1	29	06-00	4	10	11	11	14	14	16	13	9	5	2	4	
	IE	-16	05-03	20	52	11-99	-10	2	2	-11	-1	-15	11	-4	-10	-7	4	-2	
	IT	-29	05-05	13	44	02-01	-1	0	-12	-17	-3	-11	-3	18	0	-15	-18	-29	
	CY	-33	09-02	-5	16	04-04	3	4	2	3	13	7	6	8	5	10	5	5	
	LV	4	10-04	11	18	04-03	7	7	9	10	4	6	5	7	8	12	9	9	
	LT	2	04-05	22	48	03-03	18	27	21	23	15	12	12	12	7	5	2	13	
	HU	-15	10-04	1	19	05-02	-5	-2	-10	-9	-15	-12	-9	-8	-6	-7	-13	-8	
	NL	-26	07-93	12	70	12-00	8	1	14	8	8	9	8	18	19	13	13	19	
	AT	-4	10-96	13	30	03-98	12	16	17	15	16	11	12	11	7	6	8	6	
	PL <sup>(n)</sup>	-12	02-04	3	9	11-03	1	-2	5	3	3	3	3	6	6	0	3	3	
	PT	-22	06-03	5	24	11-97	-9	2	-2	-5	-7	0	-11	2	-5	-7	-10	-9	
SI	4	04-05	28	44	10-02	24	25	23	27	17	25	18	20	20	17	4	5		
SK	23	01-05	45	66	01-03	46	53	40	57	37	52	42	23	30	28	34	29		
FI	-47	03-03	19	79	05-98	-22	-21	7	-7	20	44	28	17	27	27	24	8		
SE	-60	01-02	6	41	01-05	29	31	21	25	40	37	23	41	37	36	27	31		
UK	-35	12-02	0	27	12-97	0	1	5	7	16	2	8	2	9	-21	-17	-15		
EVOLUTION OF DEMAND IN RECENT MONTHS	EU	-12	01-02	14	32	03-98	14	14	14	14	16	13	12	11	10	9	7	12	
	<b>Euro area</b>	-16	01-02	14	33	02-98	11	12	12	9	12	8	8	9	5	7	6	11	
	BE	-9	03-03	13	41	11-97	7	23	1	9	19	3	11	10	15	12	12	8	
	CZ	15	08-02	28	39	08-04	33	30	39	37	36	25	26	25	28	28	25	23	
	DK	9	04-03	24	42	12-04	31	30	29	30	39	39	42	37	36	38	38		
	DE	-32	02-02	19	43	09-98	14	12	13	10	9	10	9	9	2	4	2	7	
	EE	3	11-04	22	43	11-03	21	20	17	14	13	3	12	9	16	21	21	22	
	EL	-9	04-03	33	71	06-01	21	18	11	3	7	3	2	16	17	26	26	17	
	ES	-1	08-02	24	56	06-98	12	7	10	8	7	10	15	11	5	5	11	24	
	FR	-33	03-97	5	37	01-90	8	11	10	9	11	7	5	9	6	6	6	7	
	IE	-24	10-03	10	46	08-98	-12	5	1	-20	-10	-17	-10	-4	-15	-10	3	-4	
	IT	-28	08-02	12	38	03-01	22	22	30	15	23	15	13	12	6	16	12	32	
	CY	-34	08-02	-2	21	04-04	12	12	14	14	14	11	11	8	14	9	9	3	
	LV	-4	02-02	8	15	02-05	7	6	8	10	7	11	13	9	15	14	13	10	
	LT	0	08-02	17	29	04-03	7	23	21	22	13	5	18	14	24	16	7	17	
	HU	-14	04-05	-2	13	03-02	0	1	-12	-8	-14	-13	-9	-13	-3	-9	-14	-5	
	NL	-49	03-01	8	50	06-98	-9	-9	-16	-15	-4	-11	-5	-16	-14	2	-14	-24	
	AT	-16	01-02	16	35	03-98	17	14	20	20	21	18	19	19	15	11	11	9	
	PL <sup>(n)</sup>	-18	02-03	-4	6	08-04	2	-4	6	1	3	2	-1	5	5	3	3	3	
	PT	-34	05-03	4	26	06-01	5	5	9	4	10	14	-6	-5	6	-5	-9	-2	
SI	-1	03-05	18	29	08-04	22	18	29	16	22	20	15	15	21	-1	3	3		
SK	29	05-05	47	67	07-03	37	42	50	43	46	52	52	35	40	35	36	29		
FI	-20	09-03	27	83	04-01	-8	32	22	33	56	22	29	35	36	34	32	43		
SE	-19	10-01	17	53	01-01	30	23	23	33	42	31	21	26	36	33	32	29		
UK	-19	07-03	16	43	01-97	27	21	22	37	34	33	27	11	31	7	0	12		

TABLE 3: (continued) **Monthly survey of services (s.a.)<sup>(a)</sup>**

		Since 01/1990						2004						2005					
		Min.		Ave.		Max.		June	July	Aug.	Sep.	Oct.	Nov.	Dec.	Jan.	Feb.	Mar.	Apr.	May
		Value	Date	Value	Date	Value	Date												
EVOLUTION OF DEMAND	<b>EU</b>	-1	11-01	24	37	06-98	17	18	19	23	19	19	16	19	20	20	18	15	
	<b>Euro area</b>	-6	11-01	23	38	05-00	15	16	17	20	17	17	14	18	18	19	18	16	
EXPECTED IN THE MONTHS AHEAD	<b>BE</b>	-2	07-03	28	51	01-95	32	29	24	36	28	28	28	34	33	24	30	16	
	<b>CZ</b>	24	01-04	32	44	01-03	32	33	33	29	27	27	30	28	29	27	27	28	
	<b>DK</b>	16	09-01	30	41	12-04	33	34	35	36	35	36	41	37	35	35	33	.	
	<b>DE</b>	-22	11-01	29	59	09-00	10	10	10	13	13	12	6	13	11	12	7	8	
Component of the services confidence indicator	<b>EE</b>	7	06-04	19	32	11-02	7	18	22	24	16	10	13	15	16	16	20	20	
	<b>EL</b>	5	05-03	38	75	09-01	23	34	24	11	15	18	16	23	14	13	15	14	
	<b>ES</b>	19	10-04	38	59	06-98	39	31	28	33	19	20	22	26	25	31	31	37	
	<b>FR</b>	-18	09-93	5	32	03-01	5	9	7	7	11	9	10	11	11	13	9	10	
	<b>IE</b>	-7	05-03	19	45	06-98	1	16	8	-4	-1	3	12	3	-2	6	19	-1	
	<b>IT</b>	-6	09-00	25	57	06-01	23	22	33	35	32	35	20	26	32	47	40	28	
	<b>CY</b>	3	06-03	18	34	03-05	21	20	6	24	24	17	15	16	20	34	30	14	
	<b>LV</b>	8	01-03	14	25	02-02	11	13	14	17	16	19	19	18	13	17	17	18	
	<b>LT</b>	-7	10-02	12	30	02-03	21	13	18	20	25	14	29	23	7	16	17	18	
	<b>HU</b>	-3	12-04	5	17	02-02	6	9	2	4	-1	-1	-3	2	7	0	4	3	
	<b>NL</b>	-4	01-96	26	54	07-00	14	22	26	36	19	22	20	20	28	6	30	22	
	<b>AT</b>	-1	10-01	19	34	06-98	17	19	20	17	21	17	17	11	12	10	17	14	
	<b>PL<sup>(n)</sup></b>	-10	03-03	2	16	04-05	8	-7	7	3	3	4	1	9	14	14	16	15	
	<b>PT</b>	-16	09-03	15	40	06-01	13	7	14	13	9	23	18	-4	12	4	11	14	
	<b>SI</b>	22	04-03	27	32	12-04	29	27	24	24	24	26	32	28	23	25	30	28	
	<b>SK</b>	35	03-05	52	65	06-03	41	57	51	48	50	49	62	45	45	35	40	41	
	<b>FI</b>	-12	10-96	30	71	01-01	28	42	19	42	17	27	33	62	36	35	20	51	
	<b>SE</b>	-4	01-03	24	66	02-01	28	30	36	30	31	20	25	37	18	27	34	20	
	<b>UK</b>	-14	03-03	28	57	10-97	22	27	29	38	26	23	22	18	30	23	14	5	
EVOLUTION OF EMPLOYMENT IN RECENT MONTHS	<b>EU</b>	-10	03-03	11	26	08-98	-1	0	2	4	5	4	3	-1	2	0	1	2	
	<b>Euro area</b>	-8	03-03	12	27	03-99	-1	-1	2	3	3	3	2	-3	-1	0	0	0	
	<b>BE</b>	-14	08-02	8	30	08-98	2	2	-9	2	-1	0	-3	4	0	1	5	-4	
	<b>CZ</b>	-30	11-04	-10	18	11-02	-14	-16	-18	-23	-22	-30	1	-6	-27	-20	-8	-20	
	<b>DK</b>	-2	04-03	8	21	04-00	11	8	12	12	14	15	15	13	13	12	15	.	
	<b>DE</b>	-19	12-02	15	44	03-99	-6	-3	-1	-2	-3	-2	-2	-6	-7	-5	-3	-4	
	<b>EE</b>	1	06-02	8	16	10-03	11	11	15	9	6	2	7	8	16	5	11	13	
	<b>EL</b>	-42	06-01	8	45	06-00	13	23	19	14	4	-3	-15	-17	-8	-11	-3	-4	
	<b>ES</b>	4	03-03	19	45	08-98	11	6	12	8	5	6	10	9	11	13	12	12	
	<b>FR</b>	-27	06-93	4	23	12-90	-2	-4	2	8	9	6	3	3	1	2	0	0	
	<b>IE</b>	-36	05-05	1	25	02-98	-4	-7	-6	-17	-16	-13	-7	-12	-13	-14	-13	-36	
	<b>IT</b>	-13	05-03	7	25	05-00	3	6	-1	4	8	13	7	-11	5	1	-1	2	
	<b>CY</b>	-23	06-02	-4	6	02-05	-3	-2	-7	-2	-3	0	1	3	6	5	5	0	
	<b>LV</b>	-1	05-02	4	10	06-03	3	8	8	8	5	7	5	4	4	9	6	5	
	<b>LT</b>	-30	11-03	-12	17	11-02	-16	-16	-6	-6	7	-22	16	3	5	-8	-9	2	
	<b>HU</b>	-13	12-03	-6	2	07-04	-2	2	-8	-6	-8	-1	0	-7	-2	-11	-10	-9	
	<b>NL</b>	-8	05-03	17	66	06-98	-3	-1	2	0	-2	3	3	1	-1	-1	4	4	
	<b>AT</b>	-7	08-02	6	18	07-98	5	1	10	8	8	6	7	2	8	5	8	3	
	<b>PL<sup>(n)</sup></b>	-15	02-04	-8	2	04-05	-7	-10	-7	-12	-9	-8	-5	-3	2	-4	2	-1	
	<b>PT</b>	-34	05-03	-1	28	07-98	-12	-4	-6	-13	-19	-13	-24	-19	-18	-15	-15	-5	
	<b>SI</b>	-10	12-03	3	14	05-02	6	7	13	6	6	3	8	2	7	6	10	8	
	<b>SK</b>	-66	12-04	-38	3	07-02	-46	-47	-55	-54	-57	-55	-66	-37	-51	-44	-55	-48	
	<b>FI</b>	-26	04-97	30	91	11-97	14	-9	45	49	17	9	14	1	25	22	-4	14	
	<b>SE</b>	-40	04-03	3	42	01-01	-18	-3	-6	-6	-3	-8	-3	2	-2	4	8	2	
	<b>UK</b>	-22	04-03	9	27	05-00	3	5	1	11	22	11	14	5	18	0	4	11	
EVOLUTION OF EMPLOYMENT EXPECTED IN THE MONTHS AHEAD	<b>EU</b>	-6	03-03	10	26	06-98	7	5	5	5	5	5	5	3	4	4	5	3	
	<b>Euro area</b>	-5	04-03	9	25	04-00	5	2	3	1	1	3	2	1	1	2	4	0	
	<b>BE</b>	-11	04-03	16	34	11-99	20	17	15	18	18	15	14	17	17	15	24	9	
	<b>CZ</b>	-31	06-04	-20	-3	08-02	-31	-25	-29	-22	-23	-26	-13	-22	-14	-17	-20	-17	
	<b>DK</b>	4	02-03	11	18	04-05	13	15	13	16	12	13	13	15	17	14	18	.	
	<b>DE</b>	-13	05-03	-4	11	02-01	-1	-5	-3	-5	-3	-1	-4	-3	-3	-1	-3	-4	
	<b>EE</b>	7	03-03	15	26	03-05	17	19	21	23	20	18	18	18	19	26	24	20	
	<b>EL</b>	-33	12-00	11	47	05-99	13	21	14	7	-4	-8	-12	-6	-14	-18	-5	-3	
	<b>ES</b>	3	05-01	18	41	04-00	18	11	16	12	6	14	14	15	8	11	15	14	
	<b>FR</b>	-31	06-97	1	21	06-98	3	2	0	4	1	4	2	0	0	5	6	1	
	<b>IE</b>	-13	11-04	8	31	04-98	-2	7	2	2	-11	-13	7	-2	-8	3	-10	-5	
	<b>IT</b>	-8	04-03	11	34	06-00	10	2	4	-2	3	2	6	-3	-2	0	5	-2	
	<b>CY</b>	-5	05-05	3	18	05-02	1	-2	3	5	2	5	4	2	3	1	2	-5	
	<b>LV</b>	-1	05-02	7	13	05-05	11	8	10	9	9	9	12	10	10	11	12	13	
	<b>LT</b>	-51	05-02	-8	25	10-04	-8	-4	9	6	25	1	3	16	16	7	3	4	
	<b>HU</b>	-9	09-03	-2	5	05-04	0	-3	2	2	0	0	-1	0	1	-2	-5	-4	
	<b>NL</b>	-4	03-05	19	40	01-99	5	5	6	6	5	10	6	8	9	-4	10	7	
	<b>AT</b>	-6	01-04	9	27	09-98	8	9	12	11	7	8	6	8	5	3	7	5	
	<b>PL<sup>(n)</sup></b>	-13	07-04	-8	0	04-05	-6	-13	-2	-7	-5	-4	-8	-8	-2	-6	0	-4	
	<b>PT</b>	-24	01-03	3	37	08-03	-20	-2	-11	-21	-14	-9	-5	-10	-7	-6	-8	-16	
	<b>SI</b>	-9	08-03	7	21	05-02	11	12	20	9	11	10	14	16	19	18	21	20	
	<b>SK</b>	-67	12-04	-44	-16	05-02	-59	-60	-35	-45	-52	-52	-67	-41	-46	-44	-53	-43	
	<b>FI</b>	-31	11-96	24	82	07-00	5	24	17	4	3	1	10	-12	24	11	3	3	
	<b>SE</b>	-35	11-01	11	62	09-00	6	-3	-3	-7	9	0	3	8	2	11	11	11	
	<b>UK</b>	-17	12-02	18	33	06-98	20	23	23	28	29	15	22	17	20	13	15	20	

TABLE 4: Consumer opinion on economic and financial conditions (s.a.)<sup>(a)(b)</sup>

		Since 01/1990						2004						2005					
		Min.		Ave.		Max.		June	July	Aug.	Sep.	Oct.	Nov.	Dec.	Jan.	Feb.	Mar.	Apr.	May
		Value	Date	Value	Date	Value	Date												
CONSUMER CONFIDENCE INDICATOR	<b>EU</b>	-27	03-93	-11	2	12-00	-12	-12	-12	-11	-11	-10	-10	-10	-10	-10	-11	-12	
	<b>Euro area</b>	-29	07-93	-12	2	04-00	-14	-14	-14	-13	-13	-13	-13	-13	-13	-14	-13	-15	
	<b>BE</b>	-27	08-93	-6	17	12-00	-1	-4	-2	-2	-4	-4	-6	-3	-1	-4	-11		
	<b>CZ</b>	-36	03-98	-16	1	04-01	-13	-10	-10	-12	-11	-10	-5	-4	-5	-2	-6	-3	
	<b>DK</b>	-11	10-90	6	17	02-95	11	11	11	13	11	13	14	14	16	17	14	14	
	<b>DE</b>	-28	10-93	-11	6	05-00	-15	-17	-18	-15	-18	-17	-16	-12	-15	-18	-15	-14	
	<b>EE</b>	-56	04-93	-24	0	03-03	-18	-14	-14	-11	-11	-7	-11	-12	-10	-5	-8	-8	
	<b>EL</b>	-44	07-03	-30	-6	04-00	-23	-26	-28	-26	-25	-27	-28	-32	-32	-33	-35	-31	
	<b>ES</b>	-37	10-92	-11	6	03-00	-11	-11	-11	-13	-11	-10	-9	-9	-10	-10	-11	-11	
	<b>FR</b>	-34	08-93	-18	4	01-01	-18	-15	-13	-11	-11	-13	-13	-17	-14	-14	-17	-21	
	<b>IE</b>	-31	03-93	-4	19	01-00	-6	3	3	6	9	2	8	7	4	7	1	-1	
	<b>IT</b>	-38	04-93	-13	2	06-01	-19	-20	-20	-20	-18	-14	-16	-16	-18	-18	-16	-17	
	<b>CY</b>	-43	07-04	-28	-13	06-01	-40	-43	-39	-36	-34	-38	-41	-34	-36	-35	-38	-35	
	<b>LV</b>	-45	02-93	-25	-7	09-01	-16	-14	-13	-18	-19	-19	-18	-16	-12	-11	-14	-12	
	<b>LT</b>	-32	05-01	-14	-1	10-04	-7	-7	-7	-3	-1	-2	-3	-5	-3	-5	-1	-4	
	<b>LU</b>	-3	06-03	4	14	02-02	3	2	3	4	4	7	8	6	2	4	3	2	
	<b>HU</b>	-58	04-95	-29	0	08-02	-24	-25	-26	-24	-24	-25	-23	-21	-21	-24	-28	-30	
	<b>NL</b>	-19	07-93	4	31	03-00	-6	-3	1	1	-3	-3	-8	-4	-4	-3	2	-4	
	<b>AT</b>	-16	04-96	-1	11	07-00	-2	-1	-2	-3	-1	-3	-3	1	-3	-2	0	-3	
	<b>PL</b>	-40	08-01	-31	-18	04-05	-23	-26	-21	-25	-24	-22	-19	-20	-19	-18	-18	-21	
	<b>PT</b>	-49	03-03	-22	-1	07-91	-31	-31	-32	-32	-34	-34	-36	-35	-34	-31	-30	-31	
<b>SI</b>	-29	06-99	-19	-9	10-04	-19	-18	-15	-17	-9	-14	-18	-20	-13	-15	-13	-13		
<b>SK</b>	-50	08-99	-31	-10	04-05	-22	-22	-22	-25	-25	-16	-12	-13	-13	-13	-10	-12		
<b>FI</b>	6	11-01	15	23	02-00	15	12	17	15	14	14	16	13	16	17	14	14		
<b>SE</b>	-10	09-96	8	25	03-00	6	4	6	6	8	7	10	8	8	7	6	5		
<b>UK</b>	-28	10-92	-8	7	10-97	-5	-3	-4	-3	-2	0	0	0	0	3	0	-3		
FINANCIAL SITUATION OF HOUSEHOLDS OVER NEXT 12 MONTHS	<b>EU</b>	-10	12-93	-1	5	04-01	-1	-2	-2	-1	-1	-1	0	0	0	0	-1		
	<b>Euro area</b>	-11	07-93	-2	5	03-00	-3	-4	-4	-3	-4	-3	-3	-2	-3	-3	-4		
	<b>BE</b>	-9	12-93	2	13	08-00	7	5	6	5	8	5	6	5	7	6	4	3	
	<b>CZ</b>	-32	02-98	-10	2	05-02	-16	-7	-10	-13	-9	-6	-4	-4	-3	-3	-6	-2	
	<b>DK</b>	2	12-90	12	39	10-00	16	15	15	14	11	14	14	15	15	17	15	15	
	<b>DE</b>	-15	02-94	-5	4	05-00	-7	-8	-8	-7	-8	-6	-5	-2	-3	-4	-4	-6	
	<b>EE</b>	-38	04-93	-11	11	01-03	-10	-7	-6	-3	-2	3	-2	-3	-2	3	1	2	
	<b>EL</b>	-31	08-92	-15	10	04-00	-9	-11	-8	-8	-10	-14	-13	-17	-17	-19	-20	-17	
	<b>ES</b>	-16	10-92	1	10	10-99	-1	-1	-1	-2	-1	-1	2	0	-1	-1	-2	-1	
	<b>FR</b>	-12	12-95	-1	6	01-01	-1	-2	-1	1	0	-2	-1	-3	-2	-1	-2	-3	
	<b>IE</b>	-13	02-93	1	16	01-00	-2	0	2	2	6	0	4	4	2	4	-1	-1	
	<b>IT</b>	-15	04-93	-1	7	07-01	-3	-4	-5	-4	-4	-3	-3	-4	-4	-4	-2	-2	
	<b>CY</b>	-35	06-04	-14	0	06-01	-35	-35	-30	-26	-23	-26	-28	-24	-27	-25	-30	-27	
	<b>LV</b>	-29	09-93	-8	9	08-02	-1	2	1	1	-2	-2	-3	2	3	6	4	6	
	<b>LT</b>	-10	10-01	-1	7	10-04	3	3	3	6	7	6	5	2	3	4	6	2	
	<b>LU</b>	3	12-03	6	12	06-02	4	4	5	5	5	7	6	6	4	9	3	7	
	<b>HU</b>	-63	04-95	-22	16	08-02	-15	-14	-14	-12	-10	-12	-12	-7	-7	-10	-13	-16	
	<b>NL</b>	-11	12-04	4	16	12-99	-2	-2	1	-2	-5	-5	-11	-5	-5	-6	-2	-5	
	<b>AT</b>	-18	04-96	-4	4	04-99	-3	-3	-7	-4	-4	-9	-5	-1	-1	-2	-2	-3	
	<b>PL</b>	-20	08-01	-11	-3	04-05	-9	-12	-7	-7	-7	-6	-3	-5	-3	-3	-3	-5	
	<b>PT</b>	-26	03-03	-7	11	01-92	-13	-13	-16	-15	-15	-16	-17	-16	-18	-15	-15	-14	
<b>SI</b>	-30	06-99	-11	-2	11-96	-12	-12	-12	-10	-2	-7	-4	-7	-4	-6	-4	-4		
<b>SK</b>	-44	08-99	-25	-8	04-05	-24	-24	-24	-24	-23	-12	-10	-11	-8	-10	-8	-9		
<b>FI</b>	-8	04-93	6	13	10-04	10	11	11	12	13	12	12	10	13	11	11	11		
<b>SE</b>	-13	09-96	7	18	07-02	12	12	11	13	14	13	16	15	12	16	12	14		
<b>UK</b>	-23	03-90	2	16	09-02	8	8	7	7	9	10	8	10	10	11	10	10		
GENERAL ECONOMIC SITUATION OVER NEXT 12 MONTHS	<b>EU</b>	-32	03-93	-12	1	04-00	-14	-14	-14	-12	-12	-12	-12	-11	-10	-12	-15		
	<b>Euro area</b>	-35	03-93	-13	4	04-00	-14	-14	-14	-12	-13	-14	-13	-13	-13	-14	-17		
	<b>BE</b>	-46	07-93	-11	20	06-00	5	-2	4	3	-1	-3	-2	-5	-1	2	-5	16	
	<b>CZ</b>	-40	09-97	-12	8	10-95	-12	-8	-7	-11	-9	-10	-2	2	2	2	0	1	
	<b>DK</b>	-23	02-99	-2	23	07-01	6	2	6	5	7	7	6	6	10	13	5	6	
	<b>DE</b>	-41	03-93	-16	6	02-99	-18	-22	-24	-21	-23	-22	-20	-16	-19	-23	-21	-20	
	<b>EE</b>	-38	04-93	-4	25	03-03	-6	2	4	8	8	10	6	8	11	11	7	8	
	<b>EL</b>	-37	12-03	-16	17	01-00	-11	-15	-16	-9	-11	-16	-15	-20	-21	-19	-24	-20	
	<b>ES</b>	-38	10-92	-5	11	08-97	-5	-2	-7	-6	-5	-6	-2	-2	-4	-5	-7	-9	
	<b>FR</b>	-37	01-91	-17	5	01-01	-17	-14	-11	-7	-11	-15	-14	-18	-15	-10	-17	-26	
	<b>IE</b>	-33	12-02	-2	22	01-00	-9	2	0	6	11	2	7	6	0	6	-3	-3	
	<b>IT</b>	-40	04-93	-9	13	02-95	-17	-18	-18	-16	-11	-6	-10	-11	-12	-12	-10	-14	
	<b>CY</b>	-45	06-04	-22	-7	05-01	-45	-43	-37	-31	-28	-34	-41	-32	-31	-33	-38	-35	
	<b>LV</b>	-27	06-95	-7	11	05-03	0	4	3	2	-2	-5	-4	0	6	9	3	5	
	<b>LT</b>	-18	05-01	2	16	10-04	7	6	8	14	16	13	12	9	10	8	11	9	
	<b>LU</b>	-23	02-03	-5	7	02-02	-5	-6	-6	-5	-2	0	-1	1	-5	0	-4	-7	
	<b>HU</b>	-53	04-95	-15	19	08-02	-9	-9	-12	-7	-8	-10	-8	-5	-5	-8	-13	-16	
	<b>NL</b>	-42	03-93	-8	26	03-00	-7	0	0	-3	-6	-9	-16	-13	-6	-4	4	-6	
	<b>AT</b>	-26	04-96	-6	8	11-99	-4	1	-5	-8	-6	-7	-8	-2	-6	-4	-4	-8	
	<b>PL</b>	-35	08-01	-23	-5	04-05	-20	-24	-15	-15	-17	-16	-10	-10	-7	-7	-5	-11	
	<b>PT</b>	-52	03-03	-16	12	01-92	-24	-25	-23	-23	-27	-27	-30	-29	-24	-18	-17	-18	
<b>SI</b>	-21	02-04	-9	7	10-04	-10	-13	-9	-9	7	-2	-3	-5	0	-4	4	1		
<b>SK</b>	-51	09-99	-31	-3	04-05	-20	-20	-19	-24	-21	-12	-6	-8	-6	-3	-3	-6		
<b>FI</b>	-24	04-91	6	28	01-95	6	6	9	6	5	4	6	3	5	8	4	0		
<b>SE</b>	-30	09-96	1	20	03-00	-2	-3	2	1	3	3	3	0	1	-1	-3	-5		
<b>UK</b>	-33	03-90	-9	14	06-97	-18	-14	-16	-14	-12	-9	-7	-11	-5	-2	-6	-10		

TABLE 4 (continued):

Consumer opinion on economic and financial conditions (s.a.)<sup>(a)</sup>

		Since 01/1990						2004						2005					
		Min.		Ave.		Max.		June	July	Aug.	Sep.	Oct.	Nov.	Dec.	Jan.	Feb.	Mar.	Apr.	May
		Value	Date	Value	Date	Value	Date												
SAVINGS	<b>EU</b>	-15	08-93	-5	4	04-01	-5	-5	-4	-4	-4	-2	-3	-3	-4	-4	-4	-3	
OVER NEXT	<b>Euro area</b>	-14	08-93	-5	4	03-01	-9	-9	-7	-7	-8	-5	-6	-7	-8	-9	-8	-7	
12 MONTHS	<b>BE</b>	-2	12-93	13	31	06-98	16	12	12	16	15	13	17	15	16	16	17	13	
	<b>CZ</b>	-16	03-98	-4	11	08-03	6	4	5	-1	-1	2	2	6	2	5	0	-1	
Component of the consumer confidence indicator	<b>DK</b>	-3	01-90	22	39	04-05	27	31	29	36	36	35	36	37	37	38	39	38	
	<b>DE</b>	-5	03-03	7	23	08-90	2	-2	2	2	1	3	4	5	5	0	2	1	
	<b>EE</b>	-69	10-93	-50	-11	08-01	-43	-40	-41	-40	-40	-36	-39	-37	-36	-28	-32	-33	
	<b>EL</b>	-57	07-95	-44	-23	01-00	-37	-37	-37	-42	-37	-38	-44	-47	-47	-45	-48	-48	
	<b>ES</b>	-34	01-90	-19	0	07-00	-27	-31	-25	-29	-25	-24	-23	-25	-24	-20	-23	-22	
	<b>FR</b>	-36	03-96	-23	-7	04-04	-14	-11	-10	-9	-8	-9	-12	-16	-15	-14	-18	-15	
	<b>IE</b>	-32	03-93	-2	28	02-02	10	16	18	19	21	15	19	21	20	21	19	17	
	<b>IT</b>	-39	10-04	-16	2	03-91	-38	-37	-38	-38	-39	-29	-32	-30	-35	-36	-29	-24	
	<b>CY</b>	-55	06-02	-41	-13	06-01	-46	-50	-47	-42	-47	-46	-45	-38	-43	-38	-42	-33	
	<b>LV</b>	-90	03-96	-56	13	01-94	-47	-50	-44	-59	-52	-54	-53	-52	-50	-50	-52	-48	
	<b>LT</b>	-55	05-01	-47	-35	04-05	-45	-42	-46	-41	-41	-42	-39	-42	-40	-43	-35	-42	
	<b>LU</b>	40	05-05	47	55	04-02	51	49	48	53	45	53	52	46	46	44	46	40	
	<b>HU</b>	-70	11-95	-53	-19	01-00	-45	-47	-46	-45	-46	-47	-45	-45	-45	-44	-47	-48	
	<b>NL</b>	22	03-05	38	55	10-99	30	32	32	32	29	28	26	32	24	22	25	24	
	<b>AT</b>	-11	11-00	32	55	03-02	31	27	30	30	30	35	31	33	27	27	29	29	
	<b>PL</b>	-67	09-03	-51	-22	09-01	-48	-49	-46	-61	-53	-50	-52	-52	-50	-49	-50	-49	
	<b>PT</b>	-51	02-05	-34	-14	01-92	-46	-47	-48	-46	-50	-50	-50	-50	-51	-51	-49	-48	
	<b>SI</b>	-52	06-99	-29	-15	06-03	-27	-23	-20	-23	-24	-25	-26	-25	-25	-18	-22	-20	
	<b>SK</b>	-70	08-01	-42	-29	08-00	-41	-42	-35	-44	-46	-38	-35	-36	-37	-41	-34	-35	
	<b>FI</b>	19	01-96	37	53	05-04	53	46	53	53	48	52	52	46	50	51	49	53	
<b>SE</b>	11	06-98	29	46	06-00	30	28	27	29	31	30	31	28	30	33	29	26		
<b>UK</b>	-26	10-92	-6	17	03-05	8	12	13	15	14	17	14	15	14	17	17	12		
UNEMPLOYMENT	<b>EU</b>	-2	12-00	26	56	03-93	28	28	27	26	26	26	26	25	26	27	26	28	
OVER NEXT	<b>Euro area</b>	-3	01-01	28	60	08-93	31	30	30	28	29	29	29	28	30	31	29	31	
12 MONTHS	<b>BE</b>	-19	12-00	27	63	10-93	30	31	29	30	31	31	35	37	33	30	32	43	
	<b>CZ</b>	4	05-01	36	64	03-99	32	30	28	23	24	24	17	21	19	14	18	9	
Component of the consumer confidence indicator	<b>DK</b>	-19	11-97	8	38	12-92	5	5	7	5	10	5	2	2	-2	-1	3	3	
	<b>DE</b>	-3	01-01	30	58	10-93	37	37	40	36	41	42	41	34	43	44	37	31	
	<b>EE</b>	6	03-05	35	82	10-92	13	11	12	9	11	7	9	14	14	6	6	7	
	<b>EL</b>	24	04-90	44	62	12-98	34	44	50	43	42	42	40	43	43	47	47	40	
	<b>ES</b>	-8	03-00	18	67	01-93	12	10	11	15	15	9	12	8	10	12	11	13	
	<b>FR</b>	-14	01-01	31	64	03-03	39	35	32	29	26	25	26	32	25	32	32	40	
	<b>IE</b>	-29	12-99	16	58	04-92	23	5	8	4	2	8	-1	4	7	4	11	17	
	<b>IT</b>	-2	06-01	27	70	04-93	19	20	18	20	16	18	20	19	21	22	22	26	
	<b>CY</b>	26	05-01	36	48	12-04	35	43	43	43	39	44	48	41	42	46	43	46	
	<b>LV</b>	6	02-05	28	54	01-93	14	13	11	15	19	17	14	13	6	8	12	9	
	<b>LT</b>	-15	05-05	11	46	05-01	-6	-6	-8	-10	-13	-15	-11	-12	-14	-11	-13	-15	
	<b>LU</b>	14	02-02	33	45	06-03	36	39	36	36	33	31	27	27	37	36	33	31	
	<b>HU</b>	-3	07-98	27	59	02-93	29	31	31	32	32	30	27	26	27	33	36	40	
	<b>NL</b>	-35	07-98	18	77	03-93	46	41	29	23	31	26	32	28	28	25	19	29	
	<b>AT</b>	-9	11-00	27	49	12-96	32	30	27	30	26	31	28	27	32	29	24	30	
	<b>PL</b>	12	01-05	39	64	05-01	15	20	16	16	20	18	12	12	15	15	14	21	
	<b>PT</b>	-10	08-97	32	73	10-93	41	40	42	42	44	46	46	46	43	40	40	42	
	<b>SI</b>	7	09-01	25	43	02-04	27	25	21	26	17	21	38	40	24	31	28	29	
	<b>SK</b>	-4	01-05	27	68	08-99	2	3	12	9	9	4	-2	-4	-1	-1	-3	-3	
	<b>FI</b>	-31	01-95	-1	42	07-91	11	13	4	13	11	10	5	7	3	3	7	9	
<b>SE</b>	-26	03-00	7	39	11-01	18	22	17	19	16	17	11	10	10	18	13	17		
<b>UK</b>	-11	04-98	21	53	02-91	20	20	21	21	19	18	15	16	17	16	21	23		
FINANCIAL	<b>EU</b>	-19	01-94	-10	-2	05-00	-12	-13	-11	-12	-11	-11	-11	-11	-11	-11	-11	-12	
SITUATION	<b>Euro area</b>	-20	02-03	-10	-1	05-90	-15	-16	-14	-14	-13	-14	-14	-14	-14	-14	-14	-15	
OF HOUSEHOLDS	<b>BE</b>	-16	12-93	-5	4	11-00	-3	-7	-4	-5	-7	-3	-4	-5	-4	-4	-5	-8	
OVER LAST	<b>CZ</b>	-30	02-98	-15	-5	05-96	-19	-14	-16	-17	-17	-16	-13	-13	-10	-10	-15	-11	
12 MONTHS	<b>DK</b>	-5	04-01	6	16	02-05	11	12	13	12	11	12	14	13	16	14	10		
	<b>DE</b>	-31	12-02	-12	4	05-90	-16	-19	-14	-12	-13	-12	-12	-11	-11	-11	-12	-12	
	<b>EE</b>	-54	04-93	-18	3	03-05	-7	-8	-8	-8	-6	-2	-4	-1	-1	3	0	-1	
	<b>EL</b>	-43	01-93	-28	-6	04-00	-27	-26	-26	-23	-25	-27	-30	-30	-29	-28	-28	-27	
	<b>ES</b>	-28	01-94	-8	4	04-00	-9	-9	-10	-11	-8	-8	-7	-8	-9	-11	-10	-10	
	<b>FR</b>	-18	06-96	-9	-2	01-01	-11	-11	-11	-12	-9	-10	-11	-12	-11	-13	-12	-14	
	<b>IE</b>	-25	02-93	-7	11	04-00	-10	-5	-5	-6	-4	-6	-2	-1	-2	0	-6	-3	
	<b>IT</b>	-30	02-04	-14	-1	05-90	-24	-23	-24	-22	-21	-25	-25	-24	-23	-23	-23	-26	
	<b>CY</b>	-34	07-04	-16	-5	07-03	-30	-34	-27	-26	-24	-26	-26	-23	-24	-25	-29	-29	
	<b>LV</b>	-57	01-93	-23	-3	05-05	-11	-7	-8	-10	-10	-11	-13	-8	-6	-5	-7	-3	
	<b>LT</b>	-29	06-01	-15	-1	10-04	-8	-7	-7	-7	-1	-4	-4	-4	-2	-3	-1	-1	
	<b>LU</b>	-2	02-04	2	8	01-02	2	0	-1	-1	-1	2	3	2	0	-1	-1	4	
	<b>HU</b>	-65	11-95	-36	0	08-02	-26	-28	-27	-27	-28	-24	-26	-25	-26	-22	-26	-29	
	<b>NL</b>	-25	03-05	1	17	02-00	-15	-16	-16	-20	-19	-20	-21	-21	-23	-25	-23	-21	
	<b>AT</b>	-23	11-02	-13	-2	08-99	-22	-20	-18	-20	-18	-18	-20	-18	-17	-14	-16	-16	
	<b>PL</b>	-35	08-01	-25	-13	05-05	-21	-23	-16	-21	-19	-18	-18	-16	-17	-15	-15	-13	
	<b>PT</b>	-29	04-03	-13	3	01-92	-20	-19	-20	-19	-19	-19	-20	-21	-21	-21	-19	-20	
	<b>SI</b>	-36	06-99	-27	-14	05-05	-25	-27	-25	-22	-24	-27	-25	-17	-19	-20	-17	-14	
	<b>SK</b>	-43	10-99	-29	-15	05-05	-27	-29	-30	-30	-28	-23	-20						



TABLE 4 (continued):

Consumer opinion on economic and financial conditions (s.a.)<sup>(a)</sup>

		Since 01/1990					2004						2005						
		Min.		Ave.		Max.													
		Value	Date	Value	Date	Value	Date	June	July	Aug.	Sep.	Oct.	Nov.	Dec.	Jan.	Feb.	Mar.	Apr.	May
GENERAL	<b>EU</b>	-55	03-93	-27	-4	05-00		-34	-32	-31	-31	-30	-32	-30	-29	-28	-29	-30	-31
ECONOMIC	<b>Euro area</b>	-58	07-93	-28	-2	05-00		-38	-37	-35	-34	-34	-36	-34	-34	-33	-34	-36	-37
SITUATION	<b>BE</b>	-61	08-93	-25	22	12-00		-18	-23	-15	-19	-21	-19	-19	-20	-14	-11	-17	-29
OVER LAST	<b>CZ</b>	-54	12-97	-22	3	10-95		-23	-27	-20	-23	-22	-19	-17	-11	-11	-7	-10	-7
12 MONTHS	<b>DK</b>	-25	04-93	0	22	09-95		7	9	8	9	9	10	15	14	16	19	16	15
	<b>DE</b>	-60	05-03	-27	12	01-90		-40	-42	-40	-39	-40	-41	-37	-33	-34	-39	-40	-37
	<b>EE</b>	-72	10-92	-12	20	01-03		1	3	4	6	8	8	7	11	7	12	5	8
	<b>EL</b>	-50	05-90	-31	6	05-00		-32	-30	-26	-22	-25	-30	-31	-33	-33	-30	-30	-28
	<b>ES</b>	-61	08-93	-16	13	03-00		-16	-15	-18	-16	-16	-16	-12	-13	-15	-16	-18	-16
	<b>FR</b>	-57	10-96	-35	-1	01-01		-44	-40	-38	-36	-34	-36	-36	-39	-37	-37	-40	-42
	<b>IE</b>	-59	03-93	-5	42	08-99		-19	-3	-8	-1	2	-2	5	7	4	7	-1	-2
	<b>IT</b>	-74	04-93	-38	-8	05-90		-51	-51	-48	-46	-44	-50	-48	-48	-46	-47	-51	-55
	<b>CY</b>	-41	07-04	-26	-13	01-02		-37	-41	-34	-30	-34	-34	-39	-32	-31	-32	-38	-37
	<b>LV</b>	-59	01-93	-25	3	12-03		-5	-4	-3	-11	-12	-13	-15	-11	-6	-6	-11	-6
	<b>LT</b>	-41	05-01	-12	6	10-04		1	1	1	4	6	4	4	3	4	3	5	2
	<b>LU</b>	-36	06-03	-22	-2	01-02		-27	-25	-26	-26	-19	-14	-16	-11	-20	-16	-20	-15
	<b>HU</b>	-71	04-95	-32	6	09-02		-25	-24	-26	-25	-26	-26	-26	-22	-24	-22	-28	-32
	<b>NL</b>	-73	03-03	-13	45	03-00		-45	-40	-39	-37	-40	-41	-45	-44	-40	-35	-30	-32
	<b>AT</b>	-50	02-97	-24	8	07-00		-29	-25	-27	-28	-24	-22	-28	-22	-28	-25	-22	-24
	<b>PL</b>	-55	09-01	-42	-17	04-05		-37	-36	-32	-33	-31	-30	-24	-22	-21	-20	-17	-20
	<b>PT</b>	-60	03-03	-24	13	10-91		-47	-43	-43	-42	-43	-45	-50	-51	-51	-49	-46	-44
	<b>SI</b>	-39	09-98	-28	-14	04-05		-26	-29	-26	-26	-19	-25	-29	-26	-19	-22	-14	-16
	<b>SK</b>	-69	10-99	-43	-11	03-05		-31	-31	-29	-33	-31	-27	-19	-22	-16	-11	-12	-13
	<b>FI</b>	-65	01-92	-4	30	08-98		3	3	7	4	5	5	6	4	7	7	2	-1
	<b>SE</b>	-25	04-03	-6	25	03-00		-10	-9	-5	-8	-4	-1	-2	1	-2	-4	-6	-6
	<b>UK</b>	-67	11-92	-25	5	10-97		-22	-17	-21	-21	-22	-21	-18	-17	-14	-13	-13	-14
SAVINGS	<b>EU</b>	:	:	:	:	:		:	:	:	:	:	:	:	:	:	:	:	:
AT PRESENT <sup>(c)</sup>	<b>Euro area</b>	:	:	:	:	:		:	:	:	:	:	:	:	:	:	:	:	:
	<b>BE</b>	-45	12-03	45	70	02-01		-18	-20	-20	-21	-22	-26	-25	-27	-24	-29	-28	-10
	<b>CZ</b>	-35	01-03	-15	15	03-01		-15	-13	-16	-16	-17	-20	-21	-19	-19	-18	-20	-20
	<b>DK</b>	51	01-90	65	78	07-92		71	68	67	72	74	75	74	73	68	71	69	73
	<b>DE</b>	29	11-92	45	61	09-02		48	47	41	44	43	46	46	45	45	42	44	42
	<b>EE</b>	-58	09-96	-37	-14	08-01		-36	-28	-35	-24	-29	-24	-29	-29	-27	-23	-23	-27
	<b>EL</b>	-64	10-01	-46	-18	01-00		-54	-57	-56	-61	-54	-54	-58	-61	-64	-61	-60	-60
	<b>ES</b>	-33	12-03	29	59	08-96		-25	-29	-25	-29	-24	-20	-27	-20	-18	-19	-20	-21
	<b>FR</b>	8	11-04	43	61	06-95		13	13	13	12	12	8	10	15	14	15	17	12
	<b>IE</b>	-2	03-93	21	56	12-01		20	22	25	32	28	27	39	38	35	44	38	34
	<b>IT</b>	26	06-04	45	59	06-96		26	29	34	42	35	38	40	40	46	47	46	46
	<b>CY</b>	-37	07-04	-13	9	06-01		-33	-37	-17	-20	-24	-20	-10	-7	-2	9	-7	-4
	<b>LV</b>	-78	12-95	-58	-28	09-01		-50	-50	-48	-59	-50	-52	-54	-49	-50	-49	-53	-53
	<b>LT</b>	-47	05-01	-38	-27	05-02		-39	-35	-39	-35	-34	-39	-36	-37	-41	-40	-40	-44
	<b>LU</b>	45	04-03	53	63	01-03		56	55	56	59	53	51	55	54	59	59	57	50
	<b>HU</b>	-83	11-95	-65	-28	12-00		-47	-53	-52	-51	-52	-53	-58	-54	-51	-54	-52	-54
	<b>NL</b>	47	06-91	61	70	09-96		64	66	68	65	64	68	70	64	61	62	63	59
	<b>AT</b>	17	12-96	41	64	09-02		55	54	56	55	55	55	56	57	52	51	52	53
	<b>PL</b>	-49	09-01	-37	-29	06-01		-33	-35	-35	-36	-40	-34	-31	-38	-35	-30	-34	-33
	<b>PT</b>	-63	02-05	-39	-13	01-92		-58	-56	-60	-58	-61	-62	-63	-61	-63	-62	-63	-60
	<b>SI</b>	-25	09-97	-13	-1	08-04		-7	-2	-1	-6	-6	-2	-4	-7	-9	-5	-3	-1
	<b>SK</b>	-55	10-04	-47	-36	03-00		-50	-51	-51	-53	-55	-49	-49	-50	-50	-46	-47	-48
	<b>FI</b>	-23	04-94	3	22	10-92		13	11	11	13	14	14	16	14	15	16	18	13
	<b>SE</b>	-9	09-01	6	20	01-00		-1	1	0	-1	0	1	3	-2	-1	-1	1	2
	<b>UK</b>	-16	03-03	11	36	05-90		19	21	24	22	25	23	22	25	24	28	28	25
MAJOR	<b>EU</b>	-21	07-93	-16	-10	03-00		-18	-19	-18	-18	-18	-18	-17	-17	-17	-17	-16	-18
PURCHASES	<b>Euro area</b>	-21	07-93	-17	-12	03-00		-20	-20	-19	-19	-19	-20	-19	-18	-18	-18	-18	-19
OVER NEXT	<b>BE</b>	-29	10-96	-16	-6	10-03		-10	-11	-11	-14	-10	-16	-17	-14	-14	-14	-16	-14
12 MONTHS	<b>CZ</b>	-36	01-01	-24	-7	05-02		-24	-13	-17	-18	-16	-15	-10	-14	-11	-17	-8	-16
	<b>DK</b>	-14	01-93	-6	1	11-04		-2	-2	-2	-1	1	1	-2	0	0	0	1	-2
	<b>DE</b>	-39	02-03	-26	-14	01-90		-34	-35	-33	-33	-33	-33	-30	-30	-30	-29	-31	-30
	<b>EE</b>	-64	10-92	-26	-5	04-03		-17	-18	-22	-24	-16	-13	-9	-10	-12	-15	-11	-16
	<b>EL</b>	-50	11-92	-23	5	06-03		-33	-37	-33	-22	-24	-23	-26	-23	-21	-21	-21	-22
	<b>ES</b>	-48	11-93	-24	-7	11-00		-26	-20	-20	-25	-20	-26	-25	-23	-26	-23	-20	-23
	<b>FR</b>	-6	04-04	0	1	09-99		-4	-5	-5	-5	-4	-5	-5	-3	-4	-5	-4	-5
	<b>IE</b>	-20	05-93	-9	2	12-00		-5	-4	-6	-6	-7	-4	-6	-6	-4	-3	-6	-3
	<b>IT</b>	-23	10-92	-17	-9	04-05		-13	-15	-13	-13	-14	-13	-12	-13	-9	-11	-9	-14
	<b>CY</b>	-5	03-04	13	39	03-03		10	15	18	15	16	17	17	7	7	-4	2	10
	<b>LV</b>	-84	03-96	-43	6	03-05		-10	-5	-4	-4	-4	-6	0	3	-1	6	1	5
	<b>LT</b>	-18	12-02	-11	-2	11-04		-4	-2	-2	-3	-5	-2	-5	-6	-9	-5	-6	-4
	<b>LU</b>	-18	05-05	-13	-6	01-02		-15	-13	-9	-16	-14	-14	-16	-11	-12	-12	-12	-18
	<b>HU</b>	-69	06-95	-38	-8	08-02		-26	-27	-27	-25	-25	-22	-26	-23	-22	-22	-24	-29
	<b>NL</b>	-25	03-03	-13	-4	11-98		-20	-15	-20	-17	-18	-18	-18	-17	-17	-20	-17	-22
	<b>AT</b>	-26	11-04	-16	-4	11-00		-22	-24	-19	-19	-22	-26	-21	-22	-22	-19	-21	-21
	<b>PL</b>	-25	09-01	-8	1	09-04		-3	-5	-4	1	-3	-1	-5	-4	-6	-7	-7	-7
	<b>PT</b>																		

TABLE 4 (continued) :

Consumer opinion on economic and financial conditions (s.a.)<sup>(a)</sup>

		Since 01/1990						2004						2005					
		Min.		Ave.		Max.		June	July	Aug.	Sep.	Oct.	Nov.	Dec.	Jan.	Feb.	Mar.	Apr.	May
		Value	Date	Value	Date	Value	Date												
MAJOR PURCHASES AT PRESENT	EU	-22	07-93	-11	6	01-00	-16	-16	-16	-16	-15	-15	-15	-13	-12	-12	-13	-13	
	Euro area	-28	03-03	-14	6	03-99	-22	-23	-22	-21	-21	-22	-23	-20	-19	-19	-21	-19	
	BE	-40	06-97	-5	26	12-00	13	10	10	14	16	17	20	18	19	19	20	16	
	CZ	-33	05-95	-1	34	07-03	9	15	10	8	11	4	9	9	14	13	24	20	
	DK	-27	01-93	-7	10	09-97	-9	-1	0	-9	-3	-3	0	0	-5	1	-7	-10	
	DE	-31	11-02	-11	6	04-99	-16	-22	-19	-18	-19	-20	-19	-15	-14	-13	-18	-14	
	EE	0	04-01	13	48	04-04	26	27	24	26	30	31	39	36	37	36	38	38	
	EL	-67	01-03	-35	-10	01-01	-46	-44	-49	-38	-41	-45	-49	-46	-45	-37	-44	-45	
	ES	-64	06-93	-17	26	11-99	-25	-29	-27	-28	-31	-27	-30	-20	-22	-19	-22	-22	
	FR	-39	12-95	-14	14	07-00	-15	-10	-11	-12	-9	-11	-13	-14	-9	-11	-9	-12	
	IE	-22	04-92	14	40	09-97	9	16	19	19	18	20	19	26	21	28	22	26	
	IT	-64	11-96	-33	-2	05-90	-52	-50	-50	-50	-47	-48	-51	-49	-53	-51	-53	-44	
	CY	-19	10-01	1	24	11-04	-11	10	2	14	12	24	8	3	-4	-9	-5	1	
	LV	-81	06-96	-43	10	09-01	0	3	2	-7	0	-2	-4	5	1	-1	2	2	
	LT	-10	05-01	18	40	04-04	30	33	30	35	30	33	35	30	33	39	34	36	
	LU	-17	06-04	-9	-1	08-04	-17	-4	-1	-2	-12	-7	-3	-2	-7	-7	-8	-4	
	HU	-87	06-96	-57	-9	10-02	-18	-17	-16	-17	-16	-23	-24	-17	-16	-17	-15	-21	
	NL	-39	04-03	7	54	02-00	-30	-26	-25	-25	-30	-30	-33	-24	-28	-26	-26	-26	
	AT	-14	07-02	8	29	08-99	-9	-8	-7	-9	-10	-6	-3	-6	-7	-6	-5	-3	
	PL	-27	11-01	-10	3	11-03	-6	-8	-7	-12	-8	-8	-7	-2	-7	-4	-2	-2	
PT	-58	12-04	-32	-2	01-92	-55	-57	-56	-57	-56	-58	-58	-56	-58	-57	-58	-57		
SI	-50	04-97	-23	10	05-99	-8	-7	-4	-1	-3	-8	-11	-6	-9	-8	-5	-1		
SK	-25	02-04	-10	4	08-99	-21	-23	-15	-20	-18	-14	-15	-13	-13	-15	-15	-10		
FI	-27	04-90	17	39	08-03	32	31	30	28	23	25	21	27	27	26	24	26		
SE	2	11-95	18	33	04-04	29	20	20	24	25	24	26	28	29	30	29	27		
UK	-22	05-90	8	28	11-02	5	8	5	3	5	7	13	8	14	12	12	5		
PRICE TRENDS OVER NEXT 12 MONTHS	EU	6	06-03	23	49	01-91	13	11	12	10	10	7	8	9	8	9	11		
	Euro area	3	04-04	23	51	01-91	10	8	9	8	7	8	6	8	9	9	10	12	
	BE	-4	09-02	20	46	10-01	14	17	12	15	19	18	12	13	14	15	20	17	
	CZ	11	05-05	46	72	03-98	37	35	38	34	35	36	29	17	15	18	14	11	
	DK	-29	08-93	-11	28	08-02	-8	-5	-5	-8	-2	-7	-2	-8	-19	-15	-9	-14	
	DE	5	12-04	32	58	03-91	13	14	13	12	11	7	5	8	8	9	9	9	
	EE	23	04-93	48	88	05-04	71	58	51	51	41	47	56	56	53	51	56	51	
	EL	0	03-04	38	60	05-90	13	16	13	10	23	24	15	17	18	19	17	17	
	ES	-4	11-98	14	36	01-02	15	12	17	17	22	18	19	21	16	18	23	28	
	FR	-13	08-97	11	54	01-91	19	13	10	8	4	12	8	10	15	13	11	17	
	IE	6	01-94	22	42	10-00	26	21	22	20	19	22	11	20	20	15	21	24	
	IT	-23	12-04	22	62	02-91	-15	-15	-11	-17	-20	-20	-23	-17	-12	-12	-9	-7	
	CY	28	09-03	48	68	09-02	51	43	42	44	44	42	47	39	37	36	45	43	
	LV	16	03-00	32	70	03-04	55	49	45	45	46	45	47	41	41	39	45	46	
	LT	14	02-03	41	75	05-04	65	63	59	54	51	57	57	54	52	51	48	56	
	LU	3	06-03	13	26	03-03	19	12	17	15	18	20	20	11	16	16	15	19	
	HU	34	07-98	51	65	05-95	53	54	52	53	51	50	51	49	46	46	49	47	
	NL	-28	12-02	24	60	01-91	3	4	1	4	7	10	14	9	12	16	4	8	
	AT	-19	12-95	14	41	09-01	19	20	25	24	27	31	21	26	23	21	26	26	
	PL	7	04-05	33	54	04-04	47	45	37	33	32	29	26	23	16	16	7	19	
PT	-9	08-97	32	56	03-03	30	30	34	36	40	37	38	36	36	37	36	32		
SI	16	01-05	42	62	04-00	31	27	24	20	19	24	22	16	20	19	19	17		
SK	20	05-05	52	78	11-02	47	47	46	41	40	29	28	27	28	23	26	20		
FI	-21	12-95	10	40	09-01	18	17	22	15	16	13	13	20	19	21	24	20		
SE	-14	03-05	13	34	04-03	19	19	18	20	19	15	6	8	9	-14	3	0		
UK	5	03-05	27	57	09-90	19	15	20	18	14	14	10	5	6	5	7	6		
PRICE TRENDS OVER LAST 12 MONTHS	EU	-4	03-99	23	46	01-03	31	30	29	29	27	30	28	28	29	28	29	27	
	Euro area	-4	01-99	27	62	01-03	40	40	38	37	35	38	37	37	38	38	39	37	
	BE	-1	06-98	34	56	04-05	47	50	47	48	51	54	52	54	55	53	56	54	
	CZ	-33	08-03	26	63	03-98	-13	-10	-9	-7	-3	-11	-13	-15	-17	-16	-17	-22	
	DK	-51	09-93	-25	-1	02-90	-29	-31	-31	-33	-29	-33	-29	-30	-35	-33	-28	-28	
	DE	-3	03-99	31	74	08-02	28	29	25	27	25	25	23	20	23	22	25	20	
	EE	-1	04-03	33	53	05-05	43	46	49	49	44	52	51	52	48	52	52	53	
	EL	5	06-99	40	76	08-03	67	70	73	62	64	69	68	67	67	66	61	55	
	ES	-5	06-97	30	65	03-03	55	52	52	53	53	54	52	51	52	53	52	52	
	FR	-23	01-99	13	54	01-04	46	50	46	42	39	45	46	47	49	51	49	50	
	IE	-3	07-97	29	66	12-02	48	40	46	45	46	51	40	45	42	40	42	38	
	IT	0	05-97	36	70	11-03	49	43	46	39	34	45	43	45	43	41	43	46	
	CY	21	08-01	41	62	02-04	45	53	61	59	61	54	61	51	47	41	51	50	
	LV	-31	09-96	23	62	05-05	44	42	45	49	52	50	48	51	50	53	55	62	
	LT	-17	10-03	8	32	05-05	19	23	25	23	24	27	28	24	26	24	25	32	
	LU	21	01-02	38	46	01-04	41	35	38	37	40	38	39	41	40	42	45	38	
	HU	9	12-02	42	71	06-95	28	30	28	29	27	26	25	19	20	20	23	22	
	NL	-3	04-90	28	89	12-02	34	33	35	33	27	27	33	34	33	31	33	30	
	AT	-48	02-96	5	46	01-03	36	36	36	36	35	42	36	39	35	39	42	40	
	PL	-4	05-03	18	45	10-04	32	44	44	44	45	43	39	37	33	31	24	29	
PT	-6	08-97	37	61	10-90	44	39	42	42	44	43	46	43	42	41	42	40		
SI	14	01-05	42	65	06-02	37	32	29	23	24	28	31	14	14	19	21	17		
SK	12	05-05	44	69	10-99	38	39	39	43	37	34	32	24	17	14	14	12		
FI	-59	11-95	-15	3	04-02	-9	-9	-8	-10	-6	-5	-5	-8	-8	-8	-6	-7		
SE	-40	03-05	-26	-6	10-95	-26	-28	-28	-26	-26	-33	-32	-33	-32	-40	-37	-35		
UK	-15	11-01	10	49	10-90	4	1	1	3	3	4								

TABLE 5: Monthly survey of retail trade (s.a.)<sup>(a)(b)</sup>

		Since 01/1990						2004						2005					
		Min.		Ave.		Max.		June	July	Aug.	Sep.	Oct.	Nov.	Dec.	Jan.	Feb.	Mar.	Apr.	May
		Value	Date	Value	Date	Value	Date												
RETAIL TRADE	EU	-19	12-92	-7	4	07-90	-4	-6	-4	-7	-4	-8	-6	-5	-7	-9	-9	-9	
CONFIDENCE	<b>Euro area</b>	-21	03-93	-9	8	08-90	-10	-9	-7	-9	-7	-10	-7	-6	-8	-10	-8	-8	
INDICATOR	BE	-25	05-93	-6	13	04-90	-2	-5	-3	1	-1	-3	-2	1	-2	-10	-4	-10	
	CZ	-1	02-99	14	26	08-02	18	20	15	25	25	23	17	17	20	19	14	15	
	DK	-6	10-01	17	37	11-94	20	20	24	24	28	26	29	28	28	31	29	:	
	DE	-44	01-03	-18	21	02-91	-28	-27	-23	-28	-23	-27	-19	-17	-22	-30	-25	-23	
	EE	-1	04-03	16	30	04-04	23	18	20	18	21	20	14	18	20	22	25	22	
	EL	-24	06-95	1	27	03-04	17	15	16	18	14	9	8	13	5	9	10	4	
	ES	-36	02-93	-7	10	06-00	-5	-6	-9	-10	-11	-11	-10	-10	-12	-7	-2	-1	
	FR	-37	04-97	-16	6	10-04	-3	-2	0	1	6	-1	1	-2	-3	0	1	-3	
	IE	-21	05-03	3	24	06-00	-3	2	0	-3	1	-7	-1	-4	-8	-3	-11	-8	
	IT	-19	10-96	8	39	10-95	6	11	15	9	6	7	5	10	14	12	3	13	
	CY	-14	04-03	-5	5	04-05	-4	0	-5	-3	-2	-6	-1	-7	-3	0	5	1	
	LV	1	10-96	9	19	06-03	15	15	15	13	14	13	10	12	14	11	11	:	
	LT	-25	09-00	-5	26	06-04	26	11	9	11	13	11	11	5	10	-5	-1	3	
	HU	-28	05-05	-7	9	11-97	-9	-10	-12	-14	-19	-23	-24	-20	-20	-28	-24	-28	
	NL	-16	12-03	12	30	10-99	-10	-11	-6	-5	-3	-9	-10	-7	-10	-6	-4	-10	
	AT	-29	03-03	-13	4	07-00	-13	-12	-14	-8	-14	-18	-12	-15	-14	-10	-9	-15	
	PL	-19	01-02	-6	7	07-98	-4	-6	-9	-9	-9	-10	-8	-2	-6	-7	-8	-7	
	PT	-27	01-03	-7	4	01-99	-10	-6	-8	-5	-8	-11	-7	-7	-10	-7	-7	-10	
	SI	3	01-01	11	23	04-99	13	11	13	10	12	13	14	13	10	8	14	14	
	SK	-17	10-93	8	34	11-98	13	10	-2	5	0	3	-7	8	5	12	15	12	
	FI	-17	11-00	-4	10	05-04	0	2	-4	-3	1	-6	4	-1	-8	-4	-1	1	
	SE	-8	09-01	6	27	04-00	6	0	6	1	0	-3	0	0	2	0	1	-2	
	UK	-27	09-92	-4	20	06-04	20	5	5	-3	4	0	-3	-5	-9	-13	-19	-22	
PRESENT	EU	-25	12-94	-8	18	04-90	-3	-3	-3	-7	-7	-10	-6	-6	-11	-13	-12	-13	
BUSINESS	<b>Euro area</b>	-29	12-94	-10	21	11-90	-14	-10	-10	-11	-13	-17	-12	-8	-14	-15	-12	-13	
SITUATION	BE	-41	10-95	-6	29	06-00	-5	-7	-5	-2	1	-11	2	1	-7	-16	-4	-15	
	CZ	0	11-98	27	52	08-02	42	37	46	47	49	45	43	49	52	49	39	39	
Component of the	DK	-1	08-01	28	57	11-94	29	29	34	36	44	43	49	52	44	47	47	:	
retail confidence	DE	-66	02-02	-21	46	11-90	-34	-31	-35	-32	-38	-36	-21	-23	-34	-37	-25	-27	
indicator	EE	6	01-03	34	63	05-04	51	41	42	36	41	36	42	56	35	36	41	35	
	EL	-50	04-95	-8	40	01-04	22	21	24	27	17	18	25	32	12	14	8	7	
	ES	-72	07-93	-29	4	06-00	-25	-26	-30	-33	-36	-34	-35	-31	-34	-34	-28	-26	
	FR	-50	03-93	-13	11	10-94	-4	5	6	7	8	-9	-5	3	-2	-1	0	-8	
	IE	-30	05-03	6	37	06-98	-3	5	4	-11	-3	-13	-10	-3	-4	-2	-10	-7	
	IT	-42	02-95	14	73	02-93	7	15	26	14	9	13	3	12	14	16	0	15	
	CY	-46	02-03	-31	-13	04-04	-24	-19	-27	-30	-14	-16	-22	-34	-18	-22	-26	-14	
	LV	-18	07-96	4	32	07-03	24	22	24	20	20	20	19	20	22	14	17	:	
	LT	-37	03-00	-13	43	06-04	43	12	10	15	15	15	16	10	14	-5	-2	9	
	HU	-41	03-05	-7	16	03-98	-7	-11	-9	-16	-28	-30	-30	-24	-19	-41	-37	-38	
	NL	-27	12-03	29	57	06-99	-13	-11	-7	-5	-3	-13	-12	-7	-10	-11	-4	-11	
	AT	-36	04-03	-12	13	07-00	-17	-9	-16	-7	-18	-26	-14	-14	-13	-19	-11	-19	
	PL	-36	01-01	-14	20	02-98	0	-5	-19	-20	-16	-15	-16	3	-8	-15	-12	-10	
	PT	-46	01-03	-20	3	07-99	-31	-25	-29	-21	-28	-32	-26	-26	-32	-26	-23	-28	
	SI	2	04-02	18	44	01-99	23	23	21	19	25	24	21	15	17	11	15	13	
	SK	-35	06-95	10	58	11-98	14	12	-7	4	-9	-14	-22	2	-2	-1	19	10	
	FI	-15	11-00	7	40	05-04	20	25	9	4	13	-2	13	11	4	9	9	16	
	SE	-21	10-96	7	34	07-00	13	8	12	3	1	1	0	7	9	3	-1	-2	
	UK	-57	09-92	-5	42	06-04	42	21	21	6	13	15	14	-5	-8	-14	-22	-27	
VOLUME	EU	11	01-91	16	22	03-02	16	16	13	16	14	14	13	12	14	15	16	13	
OF STOCKS	<b>Euro area</b>	7	01-91	16	23	10-96	16	15	12	16	14	12	12	11	13	13	14	11	
	BE	-5	09-90	13	32	03-92	5	10	7	4	5	3	6	5	8	15	12	12	
Component of the	CZ	0	03-00	10	27	05-95	6	6	11	12	13	9	15	8	13	13	17	13	
retail confidence	DK	-1	04-98	18	32	04-00	18	22	18	23	18	13	16	18	13	14	15	:	
indicator	DE	4	02-91	26	43	02-02	29	26	17	27	17	17	17	15	18	22	23	15	
	EE	6	12-02	12	18	07-04	10	18	15	15	12	15	15	12	16	13	13	10	
	EL	-7	11-02	13	41	12-93	0	5	12	17	19	23	28	12	18	21	20	25	
	ES	-8	02-96	5	16	07-92	6	5	8	7	6	8	8	6	8	8	6	5	
	FR	-3	10-93	11	21	09-98	10	13	12	11	11	10	7	14	14	8	8	8	
	IE	-5	06-00	10	25	08-98	6	17	8	7	9	12	8	8	10	9	7	9	
	IT	-8	10-99	8	43	10-96	8	2	1	8	16	6	6	-2	3	1	5	5	
	CY	-15	04-05	-5	6	03-05	2	-8	-1	-10	-7	-6	-11	-7	-1	6	-15	-14	
	LV	-18	07-96	-4	8	12-02	1	-1	-1	-3	0	1	2	-1	0	0	3	:	
	LT	-21	12-99	-1	13	10-96	2	-1	0	0	-2	0	2	3	2	13	-2	-1	
	HU	4	02-96	23	33	01-99	22	17	23	20	20	23	28	24	23	21	17	24	
	NL	5	07-97	11	18	12-04	16	17	16	15	14	14	18	16	16	17	16	16	
	AT	-2	01-00	25	36	01-96	27	25	25	18	24	23	23	31	25	25	21	24	
	PL	-9	09-03	-2	7	05-05	-6	-3	-4	-2	-2	-1	-5	5	5	4	5	7	
	PT	-3	12-03	9	25	06-90	2	3	4	2	8	7	1	5	2	2	3	5	
	SI	8	05-05	17	33	01-99	11	18	17	17	19	17	12	14	14	13	10	8	
	SK	-5	06-00	10	26	02-95	13	19	22	16	13	12	12	9	14	7	7	3	
	FI	22	12-04	29	40	08-00	30	29	28	22	24	24	22	24	29	29	30	28	
	SE	18	04-00	31	44	02-98	28	33	30	25	31	32	31	29	29	30	30	29	
	UK	4	04-93	19	33	02-91	16	19	19	19	14	19	17	14	16	24	26	21	

TABLE 5 (continued): Monthly survey of retail trade (s.a.) <sup>(a)(b)</sup>

		Since 01/1990						2004					2005						
		Min.		Ave.		Max.		June	July	Aug.	Sep.	Oct.	Nov.	Dec.	Jan.	Feb.	Mar.	Apr.	May
		Value	Date	Value	Date	Value	Date												
EXPECTED	EU	-20	01-93	2	18	06-00	7	3	6	2	9	1	2	3	3	1	1	-1	
BUSINESS	Euro area	-26	02-93	-2	17	06-00	0	-1	2	0	7	-1	2	1	2	-1	1	1	
SITUATION	BE	-23	04-03	2	22	04-98	5	2	3	9	1	5	-1	7	7	1	3	-5	
Component of the retail confidence indicator	CZ	2	09-00	23	46	02-02	17	28	9	40	38	34	24	10	22	21	22	18	
	DK	8	10-01	40	71	07-94	48	54	56	59	57	50	54	50	53	58	54	:	
	DE	-42	10-02	-7	26	12-90	-20	-23	-16	-25	-12	-27	-20	-13	-14	-30	-26	-25	
	EE	4	04-03	27	62	01-03	29	30	31	31	34	39	16	9	41	43	46	42	
	EL	-4	05-95	25	60	06-00	30	28	36	45	44	34	26	20	22	32	40	30	
	ES	-34	02-93	14	34	04-91	17	14	12	11	8	11	14	8	5	20	27	26	
	FR	-64	02-93	-23	19	10-04	3	4	5	5	19	16	14	4	5	7	10	6	
	IE	-31	07-03	13	44	11-97	-1	16	5	9	16	5	15	-1	-9	0	-14	-6	
	IT	-20	03-93	17	59	06-96	20	19	20	22	25	12	18	16	30	20	15	29	
	CY	-13	06-02	9	28	03-05	14	12	10	12	2	-7	9	8	8	28	26	5	
	LV	2	01-04	19	36	09-99	21	21	21	17	22	21	13	14	19	18	20	:	
	LT	-35	09-00	-4	45	03-04	39	21	17	18	23	18	19	8	17	4	-3	0	
	HU	-22	05-05	8	39	02-98	1	-2	-4	-5	-9	-17	-15	-14	-18	-22	-17	-22	
	NL	-5	12-03	20	41	10-99	-2	-4	6	6	8	1	1	1	-3	9	9	-1	
	AT	-24	03-03	-3	15	07-00	6	-1	0	1	1	-5	0	0	-4	14	5	-4	
	PL	-33	12-01	-7	17	07-98	-18	-16	-13	-9	-14	-15	-12	-3	-6	-4	-6	-6	
	PT	-26	01-03	8	39	01-90	2	9	9	7	12	8	8	10	5	8	5	3	
	SI	15	02-03	31	47	04-99	26	28	36	28	31	31	34	37	27	26	37	35	
	SK	-14	11-94	23	60	12-96	38	36	23	27	23	34	13	30	30	45	32	30	
	FI	-4	04-03	9	39	05-97	11	10	9	10	15	7	20	9	1	9	17	16	
	SE	19	10-01	42	67	04-00	31	24	36	25	31	21	29	21	26	26	33	24	
UK	-25	10-98	12	40	01-97	33	15	14	5	14	4	-6	5	-2	-3	-8	-19		
INTENTIONS OF PLACING ORDERS	EU	-16	10-02	-3	13	01-90	-2	-3	-1	-6	-3	-9	-6	-6	-3	-7	-8	-10	
	Euro area	-23	10-02	-5	15	01-90	-8	-6	-4	-8	-7	-11	-7	-8	-3	-8	-9	-10	
	BE	-27	05-93	-7	15	03-90	-7	-8	-3	-3	-4	-10	-6	-8	-7	-8	-8	-7	
	CZ	-34	02-96	29	56	02-95	26	23	26	24	33	22	30	10	22	14	16	16	
	DK	-12	10-01	18	58	07-94	21	20	21	23	28	28	25	21	28	27	23	:	
	DE	-51	09-02	-15	21	02-91	-27	-24	-17	-28	-27	-31	-21	-22	-15	-27	-28	-32	
	EE	-3	03-03	17	33	01-03	21	20	11	12	12	24	10	2	23	29	29	24	
	EL	-23	04-93	10	38	06-96	22	17	18	19	12	5	16	14	2	15	14	9	
	ES	-31	02-93	5	21	01-90	13	9	2	-1	1	-1	4	-1	-3	1	11	11	
	FR	-37	12-92	-14	11	10-99	-7	-6	-5	-6	3	-2	-8	-4	-3	-3	-2	-8	
	IE	-43	05-03	-4	27	08-00	-9	-7	-11	-7	10	-14	0	-21	-18	-13	-11	-7	
	IT	-25	10-97	21	69	04-92	18	22	27	22	13	12	14	11	35	18	7	22	
	CY	-44	06-02	-11	10	02-04	4	-2	-6	-3	-10	2	4	-9	-15	1	4	-2	
	LV	-4	10-96	9	27	03-02	11	12	13	9	12	17	9	10	11	16	13	:	
	LT	-23	01-03	6	51	07-04	38	51	18	21	23	27	19	17	23	5	14	1	
	HU	-29	03-05	-1	23	05-98	-8	-5	-9	-9	-20	-25	-19	-17	-25	-29	-18	-26	
	NL	-22	09-03	4	25	08-99	-19	-13	-11	-10	-10	-13	-15	-12	-17	-10	-7	-16	
	AT	-42	03-99	-31	-16	06-00	-27	-28	-26	-25	-26	-32	-26	-25	-28	-27	-22	-26	
	PL	-30	12-01	-6	13	12-98	-10	-8	-6	-5	-11	-13	-8	-3	-6	-2	-7	-5	
	PT	-41	01-03	-13	12	11-98	-14	-3	-15	-14	-6	-12	-11	-8	-3	-6	-13	-23	
	SI	-2	10-01	14	30	10-00	14	15	14	16	11	14	16	12	10	6	13	19	
	SK	-19	03-96	34	78	01-02	37	42	31	36	40	43	19	34	37	51	47	53	
	FI	-20	07-03	-7	11	05-05	-5	2	-4	-4	0	-1	9	9	-4	4	4	11	
	SE	-17	10-01	14	52	03-00	10	2	12	8	4	-2	3	2	6	3	5	0	
	UK	-37	03-91	4	34	08-96	22	10	6	-1	15	-2	-6	0	-9	-12	-12	-20	
EMPLOYMENT EXPECTATIONS	EU	-13	12-92	-1	9	08-00	-2	0	2	-2	2	-2	-3	0	-1	0	0	1	
	Euro area	-11	12-92	-1	10	08-00	-2	1	3	0	3	-1	-3	2	0	1	1	4	
	BE	-13	12-92	3	16	04-90	6	9	8	13	9	10	11	15	9	4	2	4	
	CZ	-37	01-95	1	22	05-02	1	3	12	8	7	9	17	6	8	8	1	6	
	DK	-8	05-01	8	28	05-00	5	8	7	4	9	6	10	10	9	16	12	:	
	DE <sup>(c)</sup>	-32	01-03	-8	15	03-98	-16	-12	-6	-13	-7	-9	-11	-6	-10	-12	-10	-7	
	EE	-8	05-02	2	13	05-05	6	2	4	3	3	4	3	3	7	8	10	13	
	EL	-8	02-04	29	62	03-98	15	20	21	22	10	5	4	3	2	0	8	0	
	ES	-19	09-93	0	8	12-98	8	2	1	0	-2	3	3	-1	4	5	3	4	
	FR	-14	06-91	-2	12	10-00	-1	-1	1	5	2	-2	-6	5	1	0	3	1	
	IE	-17	05-03	2	22	03-98	-7	-1	-3	-10	1	-5	-4	-9	-6	1	-3	-2	
	IT	-34	02-97	11	54	02-00	18	28	29	15	32	15	8	19	21	31	26	42	
	CY	-4	07-02	0	3	07-04	2	3	-1	-1	2	0	-1	-1	0	-2	1	-1	
	LV	-23	04-96	-1	13	07-03	6	10	10	10	9	4	10	10	10	9	5	:	
	LT	-48	07-95	-14	60	02-05	54	55	22	25	28	19	50	41	60	48	47	42	
	HU	-36	05-96	-9	5	11-03	-4	-5	-11	-9	-12	-16	-13	-10	-13	-19	-15	-18	
	NL	-6	03-04	3	13	06-99	-3	-5	-4	-3	-4	-2	-3	-4	-3	-2	-2	-4	
	AT	-20	03-99	-5	71	01-96	-6	-4	-4	-4	-5	-8	-6	-5	-7	-6	-7	-7	
	PL	-28	12-01	-12	2	07-97	-11	-14	-11	-9	-10	-9	-10	-8	-7	-7	-9	-8	
	PT	-23	05-03	-5	13	09-97	-12	-2	-11	-10	-12	-11	-6	-3	-11	-11	-9	-11	
	SI	-46	02-99	-10	11	06-04	11	8	9	-3	0	-6	-4	5	-13	-13	-4	-13	
	SK	-71	12-93	-9	31	09-02	0	-3	-18	-26	-6	-6	-26	-15	-13	-17	-9	-3	
	FI	-16	07-03	-3	10	05-04	7	4	-1	-4	1	1	-3	-2	-2	-2	-4	-3	
	SE	-34	10-96	-3	23	06-00	-11	-15	-12	-13	-10	-13	-11	-15	-19	-15	-14	-19	
	UK	-32	12-91	-2	25	10-97	-2	0	0	-7	-2	-3	-1	-10	-7	-2	-6	-15	

(a) United Kingdom: refers to the volume of sales for the time of the year.

(b) The indicator is the arithmetic average of the balances (%) for the present and the future business situation, and for stocks – with inverted sign.

(c) Quarterly data, seasonally adjusted monthly.

TABLE 6: Monthly survey of construction industry (s.a.)<sup>(a)</sup>

		Since 01/1985					2004						2005						
		Min.		Ave.		Max.		June	July	Aug.	Sep.	Oct.	Nov.	Dec.	Jan.	Feb.	Mar.	Apr.	May
		Value	Date	Value	Date	Value	Date												
CONSTRUCTION CONFIDENCE INDICATOR	<b>EU</b>	-42	10-93	-21	3	02-90	-13	-13	-13	-13	-12	-11	-11	-11	-12	-12	-12	-12	
	<b>Euro area</b>	-44	08-96	-21	4	02-90	-15	-16	-15	-15	-14	-14	-13	-13	-14	-13	-14	-13	
	<b>BE</b>	-35	11-95	-12	10	02-00	-8	-9	-9	-5	-5	-4	-9	-6	-6	-4	-6	-5	
	<b>CZ</b>	-64	06-99	-18	3	06-95	2	-5	-5	-10	-9	-5	1	3	-4	-7	-9	-8	
	<b>DK</b>	-37	12-91	-9	19	03-98	-6	-6	-5	-2	-2	2	4	2	4	3	5	8	
	<b>DE</b>	-62	11-02	-36	3	01-91	-48	-49	-53	-52	-54	-53	-55	-50	-55	-51	-50	-47	
	<b>EE</b>	-46	12-99	1	33	05-05	17	9	11	13	14	16	23	24	28	31	32	33	
	<b>EL</b>	-53	03-05	-11	33	04-00	-13	-24	-35	-45	-37	-47	-49	-44	-48	-53	-48	-31	
	<b>ES</b>	-57	10-92	-3	42	01-99	7	5	25	18	26	22	24	17	26	28	20	15	
	<b>FR</b>	-60	03-93	-17	34	10-00	2	1	3	6	5	7	8	11	11	11	8	7	
	<b>IE</b>	-54	09-02	10	58	06-97	30	36	39	36	33	28	27	13	12	27	29	15	
	<b>IT</b>	-68	10-93	-13	21	05-90	10	13	3	2	2	5	4	6	2	-5	-3	-1	
	<b>CY</b>	-6	12-04	14	35	12-03	12	32	19	0	7	-3	-6	7	10	7	9	8	
	<b>LV</b>	-64	07-93	-30	3	03-05	-5	-8	-9	-11	-4	-3	-7	0	-2	3	3	:	
	<b>LT</b>	-76	09-00	-42	-2	03-05	-16	-21	-21	-12	-11	-9	-11	-10	-5	-2	-22	-11	
	<b>LU</b>	-73	03-94	-26	24	03-90	-37	-30	-28	-34	-19	-16	-10	-12	-22	-29	-20	-21	
	<b>HU</b>	-24	12-04	-7	11	09-98	-5	-11	-8	-10	-16	-20	-24	-19	-20	-17	-17	-17	
	<b>NL</b>	-25	05-03	-3	27	12-00	-17	-16	-14	-12	-7	-7	-7	-6	-5	-2	-1	-1	
	<b>AT</b>	-60	04-96	-30	-13	02-03	-29	-25	-24	-25	-23	-21	-16	-25	-22	-24	-24	-20	
	<b>PL</b>	-63	12-02	-44	-22	03-98	-40	-37	-37	-38	-32	-33	-39	-29	-32	-30	-29	-29	
<b>PT</b>	-56	02-03	-26	-1	12-97	-42	-44	-40	-41	-38	-34	-32	-33	-40	-34	-39	-34		
<b>SI</b>	-33	06-02	-8	6	01-05	2	2	2	4	-1	-1	-1	6	2	2	-2	-4		
<b>SK</b>	-86	07-99	-28	18	03-97	-16	-18	-15	-14	-13	-23	-20	-12	-17	-13	-11	-11		
<b>FI</b>	-97	09-91	-18	48	06-98	-1	0	2	-1	0	-4	4	-7	12	16	21	13		
<b>SE</b>	-83	12-93	-38	25	01-01	-21	-9	-18	-6	-1	4	14	10	3	-3	6	6		
<b>UK</b>	-79	06-91	-20	5	08-04	3	4	5	3	-3	1	-1	-2	-3	-2	-7	-10		
ORDER BOOKS	<b>EU</b>	-55	08-93	-30	-2	03-90	-23	-23	-22	-21	-22	-18	-19	-18	-17	-17	-20	-19	
	<b>Euro area</b>	-54	08-93	-29	-3	03-90	-24	-25	-24	-22	-23	-20	-21	-19	-18	-17	-21	-19	
Component of the construction confidence indicator	<b>BE</b>	-48	02-96	-23	2	02-00	-18	-20	-19	-18	-14	-14	-20	-16	-16	-12	-15	-15	
	<b>CZ</b>	-72	06-99	-23	9	12-02	5	-7	-8	-18	-20	-9	2	7	-4	-7	-13	-12	
	<b>DK</b>	-49	12-91	-12	33	03-95	-8	-8	-5	-3	-3	0	4	2	3	4	6	10	
	<b>DE</b>	-71	10-02	-45	-7	03-91	-60	-63	-69	-63	-65	-65	-66	-64	-66	-61	-63	-59	
	<b>EE</b>	-67	12-99	-5	40	05-05	17	4	0	4	10	8	17	28	26	30	35	40	
	<b>EL</b>	-77	06-95	-36	16	04-00	-27	-18	-22	-27	-37	-54	-53	-49	-61	-63	-60	-48	
	<b>ES</b>	-64	08-93	0	50	02-05	12	9	33	24	20	36	32	30	50	45	31	37	
	<b>FR</b>	-74	09-93	-24	37	10-00	-2	-6	-4	1	0	3	2	9	10	8	1	-1	
	<b>IE</b>	-61	06-94	4	68	06-97	20	11	20	16	9	25	16	4	-9	28	25	21	
	<b>IT</b>	-84	02-94	-25	17	05-90	-11	-6	-12	-10	-12	-6	-6	-3	-3	-10	-10	-11	
	<b>CY</b>	-10	12-04	8	41	12-03	12	26	16	3	6	2	-10	6	5	-5	4	-5	
	<b>LV</b>	-84	01-96	-53	-12	04-05	-20	-28	-23	-25	-21	-20	-22	-16	-17	-14	-12	:	
	<b>LT</b>	-96	09-00	-66	-22	09-04	-35	-40	-41	-22	-27	-29	-34	-35	-30	-26	-28	-37	
	<b>LU</b>	-73	08-93	-28	12	03-90	-36	-34	-35	-35	-26	-17	-9	-19	-28	-32	-24	-21	
	<b>HU</b>	-35	12-04	-17	3	09-98	-16	-22	-17	-21	-28	-32	-35	-32	-33	-30	-28	-28	
	<b>NL</b>	-30	09-93	-8	20	09-00	-23	-19	-18	-17	-17	-15	-17	-13	-13	-9	-7	-4	
	<b>AT</b>	-65	04-96	-41	-22	11-99	-45	-39	-39	-40	-34	-33	-28	-35	-38	-38	-36	-33	
	<b>PL</b>	-99	12-02	-68	-31	12-01	-68	-66	-66	-66	-63	-64	-76	-61	-62	-60	-59	-60	
	<b>PT</b>	-79	05-94	-44	-9	12-97	-60	-64	-58	-63	-58	-56	-51	-53	-61	-57	-56	-55	
	<b>SI</b>	-42	06-02	-12	3	08-04	1	-2	3	0	-3	1	0	2	0	-5	-9	-11	
<b>SK</b>	-93	03-94	-45	-5	03-97	-38	-34	-33	-30	-27	-36	-31	-27	-29	-25	-23	-26		
<b>FI</b>	-99	12-93	-26	38	06-98	-10	-5	-2	-6	-10	-3	1	-3	9	7	10	5		
<b>SE</b>	-97	05-97	-51	33	01-90	-38	-20	-33	-15	-11	-12	0	-7	-5	-10	-2	-2		
<b>UK</b>	-87	06-91	-35	-3	01-90	-6	-5	-7	-8	-14	-7	-9	-7	-10	-11	-18	-19		
EMPLOYMENT EXPECTATIONS	<b>EU</b>	-34	04-96	-12	9	02-90	-3	-4	-3	-5	-3	-4	-3	-5	-7	-6	-5	-6	
	<b>Euro area</b>	-38	04-96	-13	11	02-90	-6	-7	-6	-9	-5	-7	-6	-7	-10	-9	-7	-8	
Component of the construction confidence indicator	<b>BE</b>	-24	11-95	-1	19	02-90	3	3	1	8	5	6	2	3	5	4	5		
	<b>CZ</b>	-57	06-99	-14	12	06-95	-1	-3	-3	-2	1	-1	1	-1	3	-7	-4	-4	
	<b>DK</b>	-31	09-91	-5	42	03-98	-3	-4	-4	-1	-1	3	5	2	5	3	3	6	
	<b>DE</b>	-59	03-96	-27	19	02-90	-36	-36	-37	-42	-42	-40	-43	-36	-43	-41	-36	-35	
	<b>EE</b>	-45	03-99	8	68	01-97	17	15	23	23	18	24	29	20	30	33	30	27	
	<b>EL</b>	-64	09-04	14	60	03-99	1	-30	-49	-64	-38	-40	-45	-40	-34	-42	-36	-14	
	<b>ES</b>	-66	03-93	-6	54	01-99	2	0	16	11	31	7	17	4	2	11	8	-6	
	<b>FR</b>	-51	03-93	-10	31	10-00	7	7	9	11	9	11	14	13	13	14	16	15	
	<b>IE</b>	-50	09-02	16	61	07-04	40	61	58	56	57	31	38	22	32	26	34	9	
	<b>IT</b>	-60	10-93	-2	31	06-04	31	31	18	14	16	15	14	15	8	-1	5	9	
	<b>CY</b>	-8	11-04	20	48	11-03	12	37	22	-2	9	-8	-1	7	16	19	14	20	
	<b>LV</b>	-45	07-93	-7	26	03-04	11	12	6	4	13	14	9	16	13	20	18	:	
	<b>LT</b>	-56	09-00	-19	37	03-03	3	-2	-2	-2	5	11	13	16	20	21	-15	16	
	<b>LU</b>	-77	02-94	-24	36	03-90	-37	-26	-22	-34	-12	-14	-12	-5	-15	-26	-16	-21	
	<b>HU</b>	-13	12-04	2	21	01-98	5	1	1	1	-3	-8	-13	-6	-7	-5	-5	-7	
	<b>NL</b>	-26	05-03	2	36	12-00	-11	-13	-10	-6	3	1	3	1	3	4	6	2	
	<b>AT</b>	-76	02-01	-19	14	02-03	-12	-12	-9	-10	-11	-9	-4	-16	-5	-9	-12	-7	
	<b>PL</b>	-49	04-02	-14	18	05-96	-13	-8	-8	-9	-2	-3	-2	2	-2	-1	2	1	
	<b>PT</b>	-47	02-03	-8	19	09-97	-24	-25	-21	-19	-18	-13	-12	-12	-19	-12	-22	-13	
	<b>SI</b>	-23	06-02	-3	9	03-05	3	6	1	7	2	-2	-1	9	3	9	5	2	
<b>SK</b>	-86	07-99	-12	41	01-97	6	-1	3	3	1	-11	-9	3	-5	-2	1	4		
<b>FI</b>	-100	04-91	-11	59	03-97	7	4	5	5	10	-4	7	-11	16	26	32	21		
<b>SE</b>	-78	01-97	-26	45	01-01	-4	2	-3	4	9	20	27	26	11	4	13	13		
<																			

TABLE 6 (continued): Monthly survey of construction industry (s.a.)<sup>(a)</sup>

		Since 01/1985				2004								2005					
		Min.		Ave.		Max.													
		Value	Date	Value	Date	Value	Date	June	July	Aug.	Sep.	Oct.	Nov.	Dec.	Jan.	Feb.	Mar.	Apr.	May
TREND OF ACTIVITY COMPARED WITH PRECEDING MONTHS	<b>EU</b>	-35	03-93	-8	15	03-90		1	1	1	0	2	-2	1	7	0	-9	-5	3
	<b>Euro area</b>	-39	03-93	-9	17	03-90		-1	-1	-2	-2	1	-5	0	5	-2	-12	-6	3
	<b>BE</b>	-37	03-91	-4	36	02-90		-8	-4	-7	0	10	-1	-5	2	3	-14	0	10
	<b>CZ</b>	-34	06-99	24	77	01-05		37	42	42	33	52	60	60	77	61	50	41	36
	<b>DK</b>	-21	04-03	-4	19	01-98		1	-2	-2	0	-2	8	8	5	9	8	8	8
	<b>DE</b>	-44	03-96	-19	19	03-90		-24	-26	-27	-25	-27	-27	-25	-23	-29	-39	-25	-14
	<b>EE</b>	-25	03-99	18	47	02-95		26	28	20	29	35	40	38	42	46	38	32	38
	<b>EL</b>	-50	04-05	6	61	06-98		25	23	7	-10	-15	-24	-23	-23	-35	-44	-50	-23
	<b>ES</b>	-49	07-97	5	59	01-99		0	10	21	0	22	-2	22	27	16	5	23	38
	<b>FR</b>	-64	09-93	-9	42	07-00		17	10	12	16	20	19	16	20	19	13	10	8
	<b>IE</b>	-45	09-91	3	47	05-96		41	47	24	23	46	27	10	24	-7	15	6	0
	<b>IT</b>	-50	03-93	-2	26	07-04		26	26	4	12	10	5	6	15	11	3	2	7
	<b>CY</b>	-29	09-04	7	78	09-02		2	8	20	-29	9	-15	-12	9	4	1	34	-7
	<b>LV</b>	-47	04-96	-3	44	06-02		34	13	13	12	16	19	9	21	19	21	25	:
	<b>LT</b>	-61	03-00	-5	81	06-02		56	20	28	18	18	11	0	11	23	-7	10	18
	<b>LU</b>	-68	10-02	-23	30	04-91		-35	-38	-29	-6	-17	-18	-4	-2	-9	-32	-41	-32
	<b>HU</b>	-37	03-03	-8	14	03-99		5	5	3	-2	-8	-14	-18	-17	-19	-20	-12	-12
	<b>NL</b>	-41	02-96	-2	37	03-97		-8	-6	2	8	1	-6	-1	12	2	-5	1	5
	<b>AT</b>	-87	04-96	-9	27	01-04		-8	-4	-1	-7	4	8	15	22	-16	-38	-28	-7
	<b>PL</b>	-30	01-02	9	42	01-05		-2	9	12	11	17	20	24	42	23	0	-3	4
<b>PT</b>	-37	09-03	-9	24	05-97		-34	-21	-10	-5	-10	-13	-16	-8	-12	-24	-29	-19	
<b>SI</b>	-7	05-05	12	33	02-04		23	17	13	16	13	15	13	11	3	1	-4	-7	
<b>SK</b>	-43	06-99	6	53	12-04		24	40	44	50	47	50	53	37	3	-6	0	18	
<b>FI</b>	-88	09-91	5	75	01-98		44	18	41	32	25	17	26	25	29	25	11	10	
<b>SE</b>	-67	12-91	-13	46	04-01		-17	-13	2	21	9	13	10	16	13	12	11	20	
<b>UK</b>	-69	06-91	-6	16	02-04		12	8	13	9	3	3	4	9	2	-1	-6	-1	
PRICE EXPECTATIONS	<b>EU</b>	-21	04-96	0	25	02-90		5	7	10	6	5	9	6	7	3	1	4	2
	<b>Euro area</b>	-27	04-96	-2	32	04-90		-1	2	5	1	-1	3	1	2	-2	-3	-1	-2
	<b>BE</b>	-22	01-96	-1	29	01-90		0	2	0	0	3	0	0	-1	-2	-1	1	-1
	<b>CZ</b>	-39	08-00	42	80	02-95		30	26	38	20	23	27	19	18	22	23	18	14
	<b>DK</b>	-36	03-03	-17	0	05-98		-13	-9	-9	-10	-10	-3	-5	-4	-6	-6	-5	-5
	<b>DE</b>	-45	03-96	-13	45	02-90		-17	-21	-19	-21	-20	-20	-18	-19	-21	-25	-18	-19
	<b>EE</b>	-29	09-99	30	88	04-94		38	24	37	40	36	42	46	40	41	43	38	42
	<b>EL</b>	-39	05-05	7	35	06-95		-1	-7	-17	-27	-38	-32	-32	-23	-30	-28	-38	-39
	<b>ES</b>	-20	10-93	18	71	10-00		20	25	47	25	18	39	35	25	20	20	23	20
	<b>FR</b>	-60	03-93	-16	32	10-00		-4	2	3	4	2	3	-3	1	0	1	-4	-6
	<b>IE</b>	-66	07-03	5	58	03-00		13	54	34	16	8	8	5	10	-10	-1	8	5
	<b>IT</b>	-16	07-93	18	63	06-90		14	22	21	20	17	22	15	29	16	12	17	13
	<b>CY</b>	7	05-05	35	76	06-04		76	65	53	35	22	24	41	26	17	21	12	7
	<b>LV</b>	-11	03-01	25	66	01-05		60	54	50	50	54	60	62	66	60	48	59	:
	<b>LT</b>	-5	03-01	35	89	01-95		48	40	47	43	47	48	48	41	46	42	42	49
	<b>LU</b>	-67	05-93	-27	29	11-00		-54	-49	-41	-43	-42	-42	-41	-38	-35	-37	-29	-42
	<b>HU</b>	-3	01-05	11	32	03-01		10	10	10	9	11	10	9	-3	1	4	6	5
	<b>NL</b>	-7	01-04	25	69	04-01		5	7	9	11	13	9	5	-2	11	14	16	17
	<b>AT</b>	-53	04-96	-12	18	06-91		2	1	-4	-1	2	-4	7	4	0	-1	1	-3
	<b>PL</b>	-27	03-02	16	45	05-96		13	12	9	7	11	10	8	12	9	7	5	1
<b>PT</b>	-40	05-03	1	48	06-90		-17	-17	-13	-16	-10	-10	-12	-11	-10	-7	-23	-10	
<b>SI</b>	-6	05-02	5	16	05-04		12	11	14	14	-5	13	9	3	5	3	3	5	
<b>SK</b>	-20	08-00	54	93	06-97		46	47	62	39	41	38	15	27	25	22	28	27	
<b>FI</b>	-45	06-91	9	65	05-97		-4	19	6	5	-4	10	4	3	13	9	29	16	
<b>SE</b>	-75	06-91	-16	33	01-01		-18	5	-3	9	7	11	10	16	7	5	12	23	
<b>UK</b>	-56	12-90	14	43	08-04		41	43	43	40	34	43	37	38	33	25	26	23	

(a) The indicator is the average of the balances (%) for the questions on order-books and employment expectations.

**TABLE 7a: Manufacturing industry; future Member States (s.a.)<sup>(a)</sup>**  
Balances: i.e.differences between the percentages of respondents giving positive and negative replies (s.a.)

		Since 01/1990						2004						2005					
		Min.		Ave.		Max.		June	July	Aug.	Sep.	Oct.	Nov.	Dec.	Jan.	Feb.	Mar.	Apr.	May
		Value	Date	Value	Date	Value	Date												
CONFIDENCE INDICATOR	<b>BG</b>	-30	06-93	-8	8	11-95	-1	1	1	0	-1	2	3	2	2	0	2	3	
	<b>RO</b>	-22	09-92	-1	28	06-96	2	5	3	5	4	6	6	5	2	4	-3	-1	
PRODUCTION EXPECTATIONS	<b>BG</b>	-17	02-97	21	42	11-95	27	28	28	26	26	32	36	30	30	29	32	32	
	<b>RO</b>	-8	07-92	23	52	03-03	20	25	21	23	28	28	24	29	29	30	20	19	
ORDER BOOKS	<b>BG</b>	-65	06-93	-44	-19	10-00	-36	-31	-33	-35	-36	-34	-33	-33	-31	-33	-34	-31	
	<b>RO</b>	-53	06-99	-16	50	06-96	-13	-11	-13	-11	-14	-12	-10	-9	-12	-11	-16	-16	
STOCKS OF FINISHED PRODUCTS <sup>(b)</sup>	<b>BG</b>	-22	06-97	2	35	08-93	-6	-5	-7	-9	-8	-8	-7	-7	-7	-5	-7	-7	
	<b>RO</b>	-4	06-96	10	51	07-92	1	-2	0	-3	1	-2	-2	5	11	7	13	6	

(a) The confidence indicator is the arithmetic average of the three components (the last with inverted sign).  
(b) Highest figure is considered as minimum, lowest figure is considered as maximum.

**TABLE 7b: Services<sup>(a)</sup>**

		Since 01/1990						2004						2005					
		Min.		Ave.		Max.		June	July	Aug.	Sep.	Oct.	Nov.	Dec.	Jan.	Feb.	Mar.	Apr.	May
		Value	Date	Value	Date	Value	Date												
CONFIDENCE INDICATOR	<b>BG</b>	15	03-03	29	42	06-02	28	26	27	29	24	21	24	30	26	29	28	31	
	<b>RO<sup>(n)</sup></b>	6	02-03	29	72	06-04	72	47	40	38	35	32	29	30	20	20	22	26	
ASSESSMENT OF BUSINESS CLIMATE	<b>BG</b>	16	12-04	31	66	05-02	23	27	24	23	21	17	16	21	16	25	26	26	
	<b>RO<sup>(n)</sup></b>	9	12-03	40	75	04-03	74	52	40	47	43	41	34	43	21	22	25	29	
EVOLUTION OF DEMAND IN RECENT MONTHS	<b>BG</b>	-1	05-02	17	36	03-04	23	18	24	25	21	21	14	15	12	16	14	19	
	<b>RO<sup>(n)</sup></b>	-4	02-03	22	69	06-04	69	41	34	22	40	31	28	23	18	16	17	20	
EVOLUTION OF DEMAND IN THE MONTHS AHEAD	<b>BG</b>	16	03-03	39	59	05-02	37	33	33	38	28	26	43	53	48	45	46	47	
	<b>RO<sup>(n)</sup></b>	-23	01-03	26	72	06-04	72	48	46	46	22	24	26	24	20	22	23	28	

(a) The confidence indicator is the arithmetic average of the three components.  
(n) Not seasonally adjusted.

**TABLE 7c: Consumer opinion and financial condition; future Member States (a)**

		Since 01/1990						2004						2005					
		Min.		Ave.		Max.		June	July	Aug.	Sep.	Oct.	Nov.	Dec.	Jan.	Feb.	Mar.	Apr.	May
		Value	Date	Value	Date	Value	Date												
CONFIDENCE INDICATOR	<b>BG<sup>(n)</sup></b>	-39	08-03	-29	-14	08-01	-27	-29	-31	-28	-28	-29	-27	-27	-26	-23	-26	-22	
	<b>RO<sup>(n)</sup></b>	-33	07-02	-24	-13	01-05	-16	-16	-18	-18	-17	-14	-14	-13	-18	-20	-22	-22	
FINANCIAL SITUATION OVER NEXT 12 MONTHS	<b>BG<sup>(n)</sup></b>	-23	07-03	-12	3	07-01	-10	-14	-15	-10	-12	-11	-11	-8	-9	-8	-9	-6	
	<b>RO<sup>(n)</sup></b>	-14	07-02	-3	9	11-04	4	6	6	6	4	9	7	9	5	3	-1	1	
GEN. ECON. SITUATION OVER NEXT 12 MONTHS	<b>BG<sup>(n)</sup></b>	-25	08-03	-8	16	07-01	-7	-11	-13	-8	-9	-9	-5	-4	-4	0	-3	0	
	<b>RO<sup>(n)</sup></b>	-14	07-02	-1	12	01-05	10	8	7	5	7	8	7	12	8	6	1	-1	
SAVINGS OVER NEXT 12 MONTHS	<b>BG<sup>(n)</sup></b>	-81	03-02	-75	-68	06-01	-76	-73	-78	-76	-73	-78	-75	-76	-74	-73	-74	-69	
	<b>RO<sup>(n)</sup></b>	-63	12-03	-54	-46	12-04	-50	-47	-48	-51	-47	-46	-46	-49	-52	-49	-53	-52	
UNEMPLOYMENT OVER NEXT 12 MONTHS	<b>BG<sup>(n)</sup></b>	2	07-01	19	31	03-02	13	18	20	16	17	17	19	20	17	12	17	11	
	<b>RO<sup>(n)</sup></b>	24	11-04	38	51	01-02	28	32	36	31	32	24	25	25	31	39	35	36	

(a) The confidence indicator is the average of the four components.  
(n) Not seasonally adjusted.

**TABLE 7d: Retail trade (s.a.)<sup>(a)</sup>**

		Since 01/1990						2004						2005					
		Min.		Ave.		Max.		June	July	Aug.	Sep.	Oct.	Nov.	Dec.	Jan.	Feb.	Mar.	Apr.	May
		Value	Date	Value	Date	Value	Date												
CONFIDENCE INDICATOR	<b>BG</b>	5	11-00	19	32	06-00	15	11	15	12	15	13	13	11	9	10	11	15	
	<b>RO</b>	1	06-99	16	36	12-97	25	19	22	24	24	23	23	22	17	19	18	17	
PRESENT BUSINESS SITUATION	<b>BG</b>	-3	09-96	22	54	11-97	16	11	13	11	14	8	12	8	5	2	8	15	
	<b>RO</b>	-1	02-03	28	58	09-97	34	23	25	27	33	28	32	35	23	18	18	26	
VOLUME OF STOCKS	<b>BG</b>	-55	03-97	-19	12	11-00	-10	-7	-8	-8	-5	-8	-4	-4	-5	-6	-5	-6	
	<b>RO</b>	-20	12-94	4	55	10-95	1	1	3	-3	2	-1	2	-3	-2	-1	0	3	
EXPECTED BUSINESS SITUATION	<b>BG</b>	-33	02-97	15	43	03-00	18	15	22	17	27	23	23	21	16	21	20	25	
	<b>RO</b>	-37	10-94	24	74	11-95	40	36	45	41	40	40	39	28	28	38	35	27	

(a) The confidence indicator is the arithmetic average of the three components (for stocks, with inverted sign).

**TABLE 7e: Construction industry; future Member States (s.a.)<sup>(a)</sup>**

		Since 01/1990						2004						2005					
		Min.		Ave.		Max.		June	July	Aug.	Sep.	Oct.	Nov.	Dec.	Jan.	Feb.	Mar.	Apr.	May
		Value	Date	Value	Date	Value	Date												
CONFIDENCE INDICATOR	<b>BG</b>	-56	03-93	-29	1	03-05	-18	-13	-15	-13	-11	-9	-4	-9	-6	1	1	-1	
	<b>RO</b>	-60	09-99	-9	35	06-96	-7	-6	-13	-17	-6	-6	-8	-12	-16	-15	-18	-18	
ORDER BOOKS	<b>BG</b>	-74	10-00	-43	-20	12-04	-31	-33	-32	-30	-29	-23	-20	-21	-26	-24	-22	-24	
	<b>RO</b>	-89	09-99	-12	64	03-98	-18	-18	-27	-25	-23	-20	-23	-24	-26	-31	-32	-30	
EMPLOYMENT EXPECTATIONS	<b>BG</b>	-50	01-93	-14	27	03-05	-6	8	3	4	7	6	11	4	14	27	24	23	
	<b>RO</b>	-39	06-97	-7	38	03-01	4	5	1	-10	10	7	7	1	-5	1	-4	-5	

(a) The confidence indicator is the average of both components.