

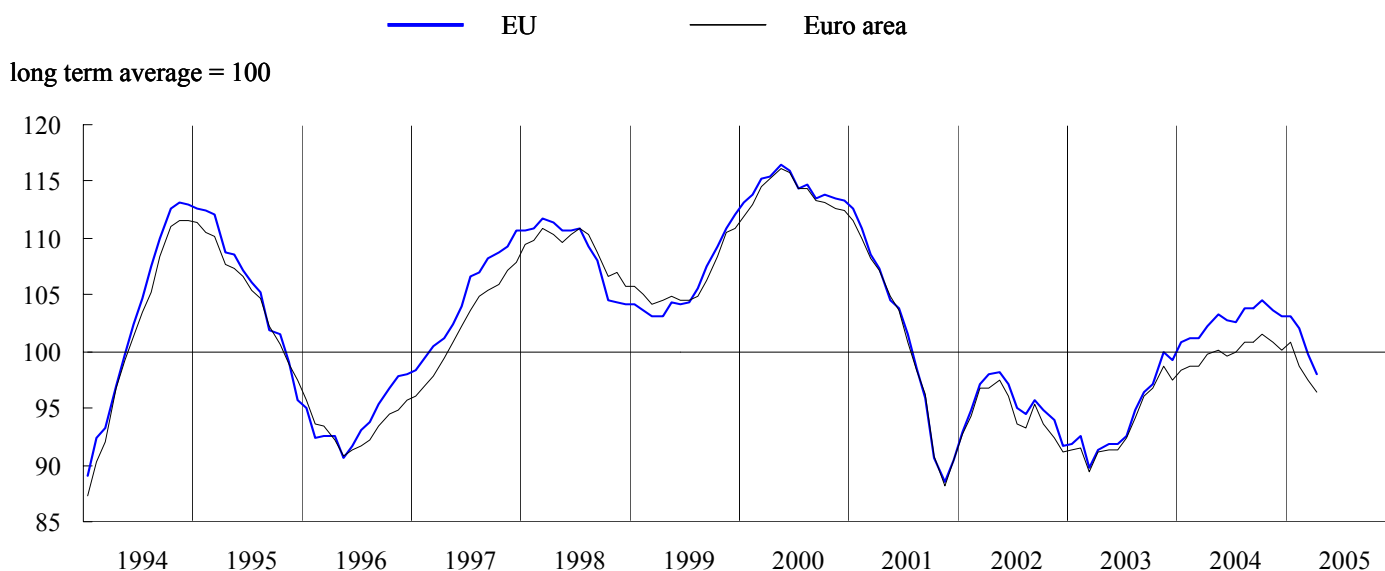


BUSINESS AND CONSUMER SURVEY RESULTS

April 2005

Next publication of Business and Consumer Survey Results scheduled for 28 May 2005
http://europa.eu.int/comm/economy_finance/indicators/businessandconsumersurveys_en.htm

GRAPH 1: Economic sentiment indicator (s.a.)



Economic sentiment continues to decline in both the EU and the euro area

The *economic sentiment indicator (ESI)* for the EU weakened by 1.7 points in April, following its decline by 2.4 points in March. In the *euro area*, the indicator eased by 1 point in April, after a decrease of 1.3 points in March. Since peaking in October 2004 the indicator has fallen by 6.6 points in the EU and by 5 points in the euro area, indicating a considerable slowing of output growth in the first half of 2005.

In both areas, the decline in the economic sentiment indicator was due mainly to a worsening of confidence in the industry and the services sector. Consumer confidence was holding up, though, and retail and construction confidence developed sideward.

Among the large Member States, strong decreases were registered in the *UK*, followed by *France*. The deterioration was more limited in *Germany* and *Italy*. In *Spain*, economic confidence remained almost unchanged while *Poland* saw a significant recovery after the strong fall in the previous month.

Industrial confidence declines in both the EU and the euro area

Industrial confidence declined by 2 points in the EU and by 1 point in the euro area. For the first time since the end of 2003 the indicator is now below its long-term average in both areas.

The decline of the indicator in the EU was reflected in all indicator components. The assessment of *order books* worsened by 3 points, *production expectations* declined by 2 points and the opinions on the *stocks of finished products* deteriorated by 1 point. Developments in the euro area were similar, although less pronounced.

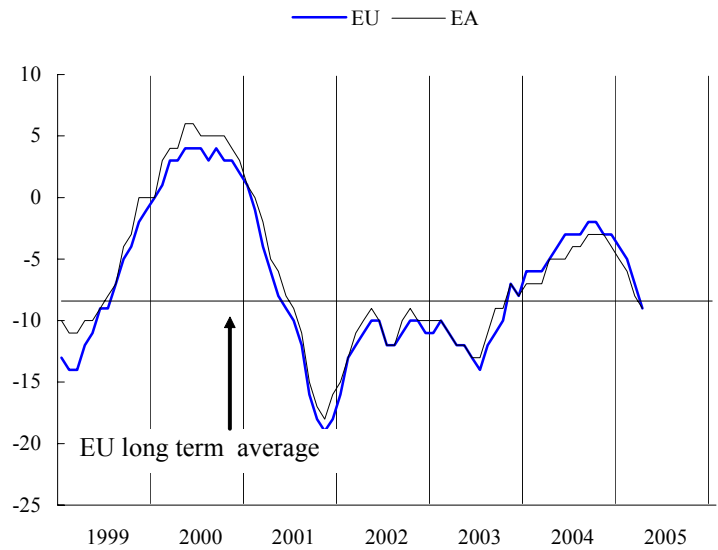
Industrial confidence fell in all large Member States with the exception of *Italy*, where the indicator remained steady. The strongest decline among the large Member States was observed in the *UK* where the indicator dropped by 5 points, following an equivalent decrease in the month before.

The results of the *quarterly survey in the manufacturing sector* for April 2005 are by and large consistent with the results of the monthly survey. Industrial managers reported a deterioration in their assessment of *new orders* and the *expected export volume*. The *estimated number of months' production assured by orders in hand* also decreased slightly.

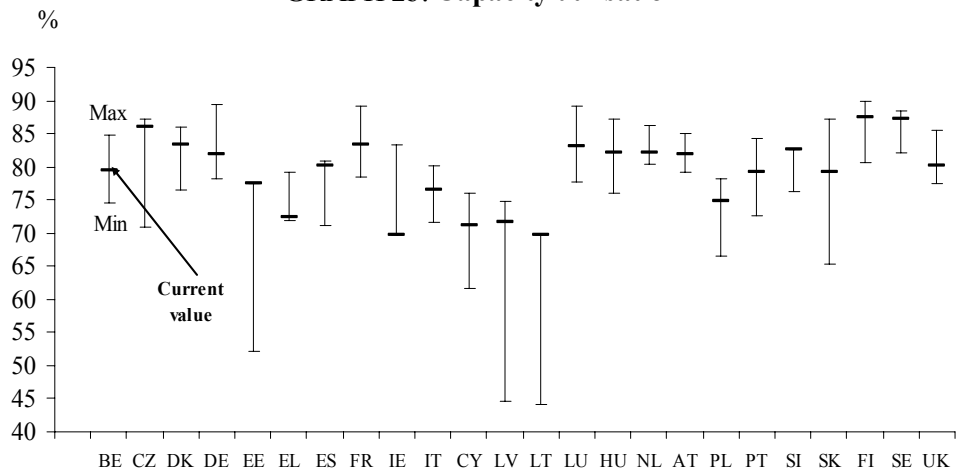
Capacity utilisation fell by nearly 1 percentage point compared with the results of January. Among the large Member States, *Germany, France, Poland* and the *UK* registered a fall in capacity utilisation, while it remained unchanged in *Spain* and *Italy*. Comparing the April value with the historical minima and maxima it can be seen that about one half of the Member States fall in the upper half of the interval, with a few countries, mostly from the group of the recently acceded countries, approaching or reaching the historical maximum.

At the level of branches, only the *consumer goods* sector could escape the general trend of a decreasing capacity utilisation. While the decline in the *investment goods* sector remained limited, the *intermediate goods* sector registered a considerable drop in capacity utilisation in comparison to January.

GRAPH 2a: Industrial confidence indicator



GRAPH 2b: Capacity utilisation



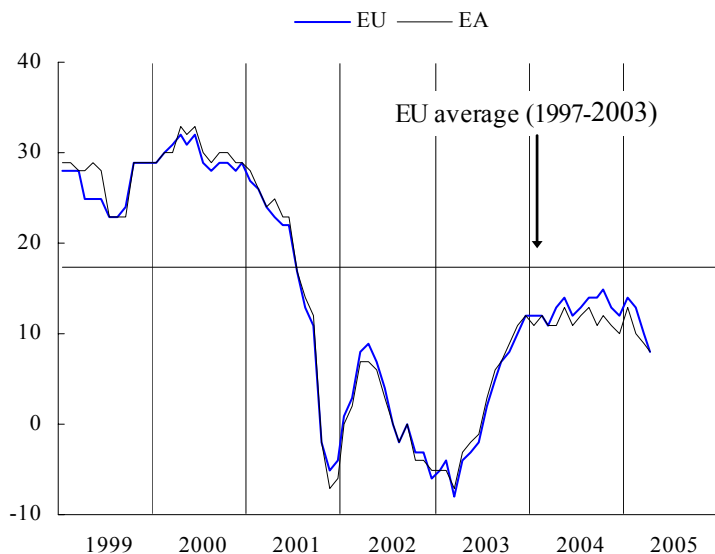
Services confidence also falls in both areas

Confidence in the services sector decreased by 2 points in the EU and by 1 point in the euro area. After a strong recovery during 2003 and a more or less stable evolution in 2004, confidence in the services sector has entered on a downward path since the beginning of 2005.

The fall of the services confidence indicator in the EU was due to a more negative assessment of the *evolution of demand*, both over the *most recent months* and the *coming months*. The assessment of the *current business situation* remained unchanged. Developments in the euro area were similar.

At country level, a mixed picture prevails. Among the large Member States, a decline in confidence was registered in *France*, *Italy*, the *UK* and, to a smaller degree, in *Germany*. *Spain* and *Poland*, on the other hand, recorded a fairly strong increase in confidence.

GRAPH 3: Services confidence indicator

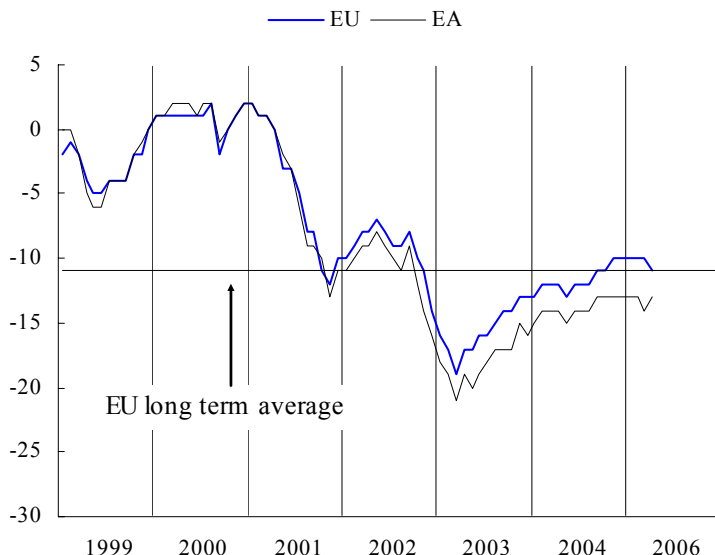


Consumer confidence remains fairly stable

Consumer confidence continued its broadly stable evolution observed over the last months. Having remained unchanged at a level of -10 for the period November 2004 - March 2005, the indicator for the EU declined moderately to a level of -11 in April. In the euro area, the indicator edged up by 1 point to -13, a level at which it had been standing in the 6 months prior to March, when it fell to -14.

The relative stability of the confidence indicator in the EU is also reflected in the underlying components. Consumers' expectations with regard to their own *financial situation* and their *savings* remained unchanged. Their expectations about *the general economic situation* worsened slightly compared to the March figure. On the other hand, consumers held more optimistic views concerning the *future unemployment* situation.

GRAPH 4: Consumer confidence indicator



The results at the country level are slightly more volatile. In *France* and the *UK* confidence fell by 3 points, while *German* consumer sentiment regained 3 points, offsetting an equivalent loss in the month before.

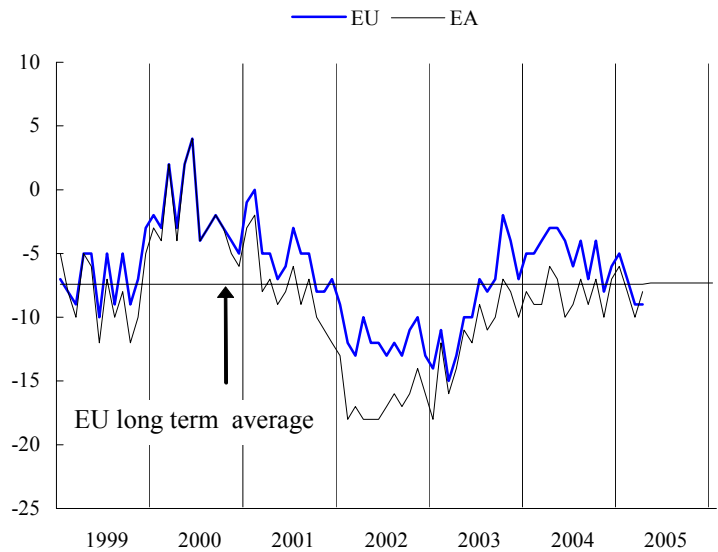
Confidence in retail trade unchanged in the EU, increase in the euro area

The *retail trade confidence indicator* remained unchanged in the EU and increased by 2 points in the euro area. In the light of the erratic behaviour of the indicator over the last 18 months it is not easy to recognise a clear trend in the euro area developments. In the EU, however, the mild downward trend, which started at the end of 2003, seems to have become more accentuated in recent months.

As to the underlying indicator components, a more positive view on the *present business situation* was compensated by a negative assessment of the *volume of stocks*. Regarding the *expected business situation* the views of retailers did not change in the EU in comparison to the previous month, while they improved in the euro area.

At the country level, developments were quite diverse. Among the large Member States, *Spain, Italy* and *the UK* saw a large fall in confidence, while *Germany* registered a strong improvement of retailers' confidence.

GRAPH 5: Retail confidence indicator



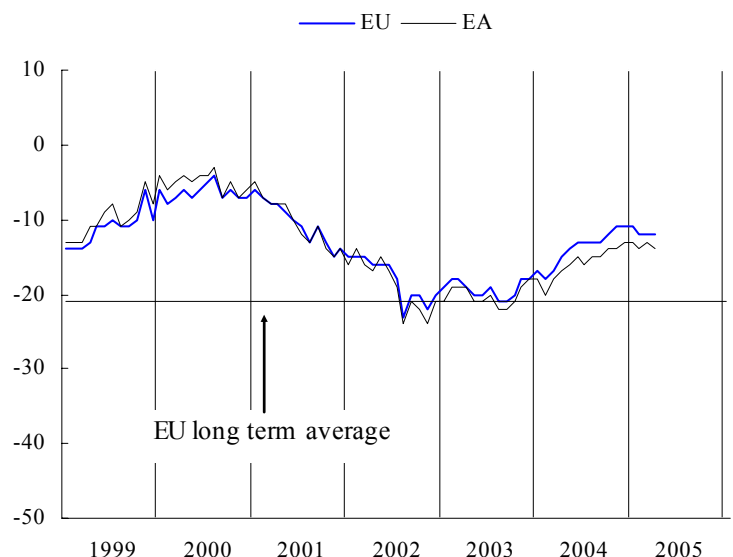
Construction confidence stable in the EU but slightly down in the euro area

The *construction confidence indicator* remained unchanged in the EU and fell by 1 point in the euro area. After a period of slow, but sustained growth between September 2003 and November 2004, confidence in the construction sector has remained fairly stable over the last few months.

The stability in the development of the overall indicator masks fairly strong movements at the level of the components. In particular, while the assessment of *order books* deteriorated strongly in the EU, there was at the same time more optimism with regard to the *employment expectations*.

At the country level, a strong fall in construction confidence was recorded in *Spain* and the *UK*. *France* also registered a small fall of confidence. The other large Member States saw confidence in the construction sector improve.

GRAPH 6: Construction confidence indicator

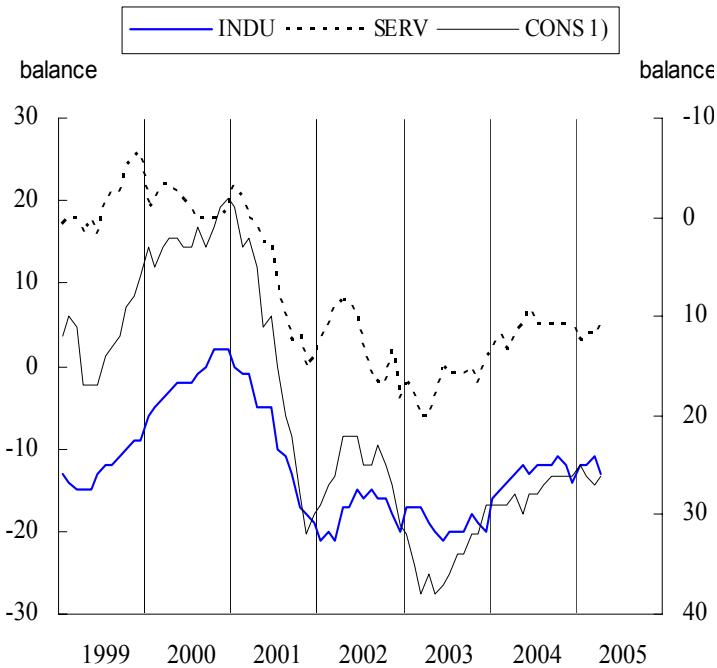


Employment, unemployment and price expectations in the EU

Overall, *employment expectations* in the EU developed in a mixed way. Managers in the industry had a slightly less optimistic view of employment developments compared with one month ago. Managers in the service sector as well as consumers on the other hand were more optimistic with regard to future (un)employment.

Regarding *price expectations*, the picture is ambiguous. Managers in the industry foresee strong downward pressure on prices, while consumers and construction managers expect more upward pressure.

GRAPH 7: Employment and unemployment



1) Unemployment expectations (Right Hand Scale)

GRAPH 8: Price expectations

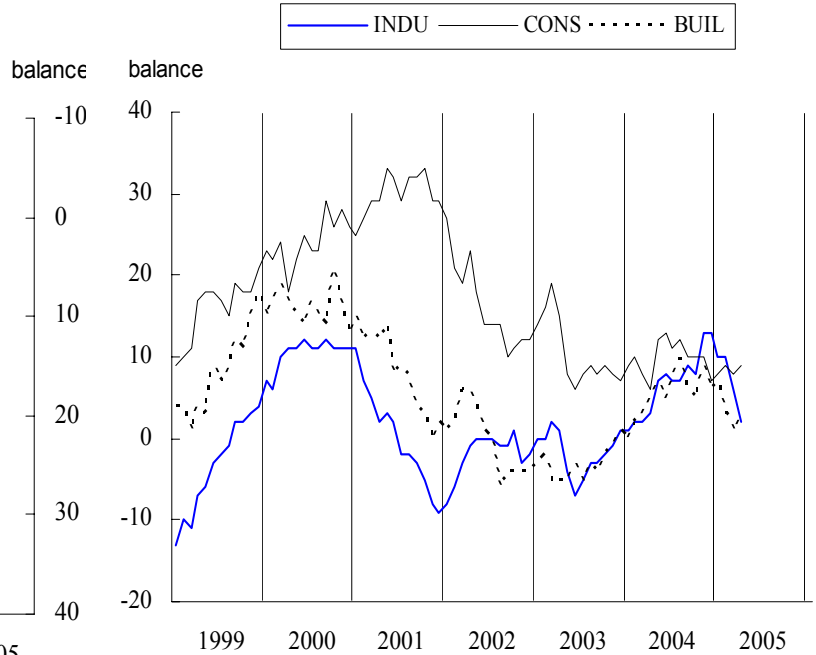


TABLE 1*: Indicators of confidence and economic sentiment(s.a.)		Since 01/1990 ⁽¹⁾																	
								2004						2005					
		Min.		Ave.		Max.		May	June	July	Aug.	Sep.	Oct.	Nov.	Dec.	Jan.	Feb.	Mar.	Apr.
		Value	Date	Value	Date	Value	Date	Value	Date	Value	Date	Value	Date	Value	Date	Value	Date	Value	Date
EU	1. Industry	-28	07-93	-8	7	12-94	-4	-3	-3	-3	-2	-2	-3	-3	-4	-5	-7	-9	
	2. Services	-8	03-03	17	32	08-98	14	12	13	14	14	15	13	12	14	13	10	8	
	3. Consumer ^(a)	-27	03-93	-11	2	12-00	-13	-12	-12	-12	-11	-11	-10	-10	-10	-10	-10	-11	
	4. Retail trade	-19	12-92	-7	4	07-90	-3	-4	-6	-4	-7	-4	-8	-6	-5	-7	-9	-9	
	5. Construction	-42	10-93	-21	3	02-90	-14	-13	-13	-13	-13	-12	-11	-11	-11	-12	-12	-12	
	=6. ESI ^(a)	76.6	07-93	100.0	116.4	05-00	103.3	102.8	102.6	103.8	103.8	104.6	103.6	103.1	103.2	102.1	99.7	98.0	
Euro area	1. Industry	-31	06-93	-8	6	05-00	-5	-5	-4	-4	-3	-3	-3	-4	-5	-6	-8	-9	
	2. Services	-7	03-03	18	34	08-98	13	11	12	13	11	12	11	10	13	10	9	8	
	3. Consumer ^(a)	-29	07-93	-12	2	04-00	-15	-14	-14	-14	-13	-13	-13	-13	-13	-13	-14	-13	
	4. Retail trade	-21	03-93	-9	8	08-90	-7	-10	-9	-7	-9	-7	-10	-7	-6	-8	-10	-8	
	5. Construction	-44	08-96	-21	4	02-90	-16	-15	-16	-15	-15	-14	-14	-13	-13	-14	-13	-14	
	=6. ESI ^(a)	75.8	07-93	100.0	116.1	05-00	100.2	99.6	100.0	100.9	100.9	101.5	100.9	100.2	100.8	98.8	97.5	96.5	
BE	1. Industry	-33	04-93	-11	5	06-00	-3	-5	3	-1	0	0	-2	-5	-3	-6	-7	-11	
	2. Services	-7	03-03	13	33	03-98	10	12	18	8	15	17	10	11	15	14	11	12	
	3. Consumer	-27	08-93	-6	17	12-00	-6	-1	-4	-2	-2	-2	-4	-4	-6	-3	-1	-4	
	4. Retail trade	-25	05-93	-6	13	04-90	-1	-2	-5	-3	1	-1	-3	-2	1	-2	-10	-4	
	5. Construction	-35	11-95	-12	10	02-00	-8	-8	-9	-9	-5	-5	-4	-9	-6	-6	-4	-6	
	=6. ESI	77.0	04-93	100.0	120.2	06-00	105.2	106.1	111.2	106.1	109.7	110.0	106.3	105.1	107.5	106.6	104.3	101.3	
CZ	1. Industry	-31	03-99	-1	27	06-00	5	11	9	10	10	12	12	11	7	8	7	5	
	2. Services ⁽ⁿ⁾	30	01-05	40	52	07-02	45	45	45	43	40	38	39	35	30	38	36	39	
	3. Consumer	-36	03-98	-16	1	04-01	-15	-13	-10	-10	-12	-11	-10	-5	-4	-5	-2	-6	
	4. Retail trade	-1	02-99	14	26	08-02	16	18	20	15	25	25	23	17	17	20	19	14	
	5. Construction	-64	06-99	-18	3	06-95	0	2	-5	-5	-10	-9	-5	1	3	-4	-7	-9	
	=6. ESI	69.7	03-99	100.0	117.6	04-01	107.2	112.2	111.8	109.3	106.3	107.3	109.4	106.2	102.0	107.7	106.2	104.7	
DK	1. Industry	-26	12-98	-2	16	09-94	4	8	11	6	3	3	-3	2	3	1	1	-5	
	2. Services	11	10-01	25	37	04-04	32	29	28	28	30	34	33	37	34	33	34	33	
	3. Consumer	-11	10-90	6	17	02-95	10	11	11	11	13	11	13	14	14	16	17	14	
	4. Retail trade	-6	10-01	17	37	11-94	19	20	20	24	24	28	26	29	28	28	31	29	
	5. Construction	-37	12-91	-9	19	03-98	-4	-6	-6	-5	-2	-2	2	4	2	4	3	5	
	=6. ESI	74.5	12-98	100.0	121.2	09-94	111.8	112.7	113.4	110.6	110.6	113.1	110.8	115.7	114.5	113.8	114.7	108.8	
DE	1. Industry	-35	04-93	-11	11	09-90	-9	-10	-9	-8	-7	-6	-6	-6	-6	-9	-11	-13	
	2. Services	-23	12-02	25	52	03-99	17	11	12	13	12	11	11	8	11	6	5	4	
	3. Consumer	-28	10-93	-11	6	05-00	-18	-15	-17	-18	-15	-18	-17	-16	-12	-15	-18	-15	
	4. Retail trade	-44	01-03	-18	21	02-91	-21	-28	-27	-23	-28	-23	-27	-19	-17	-22	-30	-25	
	5. Construction	-62	11-02	-36	3	01-91	-48	-48	-49	-53	-52	-54	-53	-55	-50	-55	-51	-50	
	=6. ESI	80.5	07-93	100.0	120.2	09-90	97.0	95.7	95.4	96.5	97.0	97.1	97.1	96.8	98.4	95.5	93.7	93.4	
EE	1. Industry	-31	07-92	4	19	03-01	18	17	10	10	12	7	5	6	12	15	17	13	
	2. Services ⁽ⁿ⁾	-6	12-04	22	43	05-04	43	31	26	20	14	13	-5	-6	-3	14	23	37	
	3. Consumer	-56	04-93	-24	0	03-03	-21	-18	-14	-14	-11	-11	-7	-11	-12	-10	-5	-8	
	4. Retail trade ⁽ⁿ⁾	-37	03-99	6	37	05-04	37	30	22	23	21	22	20	0	4	18	22	28	
	5. Construction ⁽ⁿ⁾	-46	03-99	2	35	04-05	27	27	22	21	20	12	6	8	13	20	27	35	
	=6. ESI	70.9	07-92	100.0	117.7	05-04	117.7	114.2	109.2	105.1	103.0	100.6	91.6	92.3	95.4	101.3	107.9	113.1	
EL	1. Industry	-12	09-90	1	13	03-00	7	4	0	-1	-3	-4	-4	-4	-3	-4	-7	-4	
	2. Services	-14	04-03	27	62	08-00	26	24	24	16	7	13	11	6	20	18	23	22	
	3. Consumer	-44	07-03	-30	-6	04-00	-22	-23	-26	-28	-26	-25	-27	-28	-32	-32	-33	-35	
	4. Retail trade	-24	06-95	1	27	03-04	20	17	15	16	18	14	9	8	13	5	9	10	
	5. Construction	-53	03-05	-11	33	04-00	-6	-13	-24	-35	-45	-37	-47	-49	-44	-48	-53	-48	
	=6. ESI	78.9	09-90	100.0	128.1	07-00	110.7	106.9	101.8	97.4	93.8	94.6	92.2	91.5	94.2	92.3	90.0	91.4	
ES	1. Industry	-44	01-93	-9	7	04-00	-1	-4	-3	-3	-2	-2	-1	-4	-1	-5	-4	-6	
	2. Services	10	10-04	31	56	06-98	26	22	16	16	17	10	13	16	15	12	14	17	
	3. Consumer	-37	10-92	-10	6	03-00	-9	-11	-11	-11	-13	-11	-10	-9	-9	-10	-10	-11	
	4. Retail trade	-36	02-93	-7	10	06-00	-6	-5	-6	-9	-10	-11	-11	-10	-10	-12	-7	-2	
	5. Construction	-57	10-92	-3	42	01-99	7	7	5	25	18	26	22	24	17	26	28	20	
	=6. ESI	69.9	01-93	100.0	116.7	04-00	103.5	99.8	97.3	97.3	98.2	95.4	97.4	97.7	98.4	95.3	97.6	97.7	
FR	1. Industry	-41	06-93	-8	15	06-00	-3	-1	-2	-2	-1	-1	-3	-1	-5	-5	-9	-10	
	2. Services ^(a)	-22	06-93	3	25	06-90	3	6	10	9	9	12	10	11	11	9	8	5	
	3. Consumer ^(a)	-34	08-93	-18	4	01-01	-17	-18	-15	-13	-11	-11	-13	-13	-17	-14	-14	-17	
	4. Retail trade	-37	04-97	-16	6	10-04	-2	-3	-2	0	1	6	-1	1	-2	-3	0	1	
	5. Construction	-60	03-93	-17	34	10-00	5	2	1	3	6	5	7	8	11	11	11	9	
	=6. ESI ^(a)	75.1	06-93	100.0	119.1	04-00	105.2	106.4	107.6	108.4	109.7	110.5	108.4	109.4	105.9	106.2	104.8	102.1	
IE	1. Industry	-23	11-01	-2	21	11-99	3	5	1	-13	-5	-4	-9	-7	-12	1	0	-2	
	2. Services	-14	05-03	17	44	08-98	2	-7	7	4	-12	-4	-10	4	-2	-9	-4	9	
	3. Consumer	-31	03-93	-4	19	01-00	-6	-6	3	3	6	9	2	8	7	4	7	1	
	4. Retail trade	-21	05-03	3	24	06-00	-3	-3	2	0	-3	1	-7	-1	-4	-8	-3	-11	
	5. Construction	-54	09-02	10	58	06-97	17	30	36	39	36	33	28	27	13	12	27	29	
	=6. ESI	79.2	06-93	100.0	122.4	11-99	99.2	98.4	103.0	93.2	95.0	96.5	90.9	95.8	91.7	96.1	98.2	98.6	
IT	1. Industry	-22	04-93	-4	13	07-95	-4	-3	-1	-1	0	1	-1	-2	-2	-6	-7	-7	
	2. Services	-5	11-01	17	44	02-98	13	15	15	17	11	17	13	10	19	13	16	12	
	3. Consumer	-38	04-93	-13	2	06-01	-19	-19	-20	-20	-20	-18	-14	-16	-16	-18	-18	-16	
	4. Retail trade	-19	10-96	8	39	10-95	5	6	11	15	9	6	7	5	10	14	12	3	
	5. Construction	-68	10-93	-13	21	05-90	-5	10	13	3	2	2	5	4	6	2	-5	-3	
	=6. ESI	73.0	04-93	100.0	118.9	02-95	98.2	99.2	99.8	100.2	99.2	102.1	101.2	97.6	100.3	96.6	96.3	96.0	
CY	1. Industry	-9	04-03	3	13	04-02	5	5	10	10	6	8	1	10	4	3	6	3	
	2. Services ⁽ⁿ⁾	-16	02-03	4	25	10-													

TABLE 1* (continued) : Indicators of confidence and economic sentiment (s.a.)

		Since 01/1990 ^(*)				2004								2005					
		Min.		Ave.		Max.													
		Value	Date	Value	Date	Value	Date	May	June	July	Aug.	Sep.	Oct.	Nov	Dec.	Jan.	Feb.	Mar.	Apr.
LT	1. Industry	-37	11-98	-15	1	07-04		-3	-4	1	-5	-3	-1	-3	-12	-9	-7	-3	-4
	2. Services ⁽ⁿ⁾	5	11-04	17	40	04-03		23	15	14	14	23	20	5	15	14	8	20	23
	3. Consumer	-33	05-01	-15	-1	04-05		-13	-8	-7	-7	-3	-2	-2	-3	-5	-4	-5	-1
	4. Retail trade	-25	09-00	-5	26	06-04		23	26	11	9	11	13	11	11	5	10	-5	-1
	5. Construction	-76	09-00	-42	-2	03-05		-14	-16	-21	-21	-12	-11	-9	-11	-10	-5	-2	-22
	=6. ESI	74.8	11-98	100.0	125.0	10-04		118.3	117.5	119.8	115.2	124.2	125.0	116.1	115.2	114.0	114.0	120.4	124.6
LU	1. Industry	-35	05-92	-10	26	04-95		6	11	14	18	17	8	-1	-7	-1	-6	2	-6
	2. Services	:	:	:	:	:		:	:	:	:	:	:	:	:	:	:	:	:
	3. Consumer ⁽ⁿ⁾	-5	11-02	3	14	02-02		1	5	5	4	7	5	4	6	4	1	2	1
	4. Retail trade	:	:	:	:	:		:	:	:	:	:	:	:	:	:	:	:	:
	5. Construction	-73	03-94	-26	24	03-90		-43	-37	-30	-28	-34	-19	-16	-10	-12	-22	-29	-20
	=6. ESI	82.9	06-96	100.0	123.1	04-95		105.4	109.5	110.7	112.3	113.2	107.8	107.2	103.6	105.3	100.5	106.5	100.5
HU	1. Industry	-15	05-99	-3	8	12-97		-6	0	-5	-2	-3	-5	-11	-5	-7	-12	-12	-14
	2. Services ⁽ⁿ⁾	-10	11-04	1	14	03-02		5	1	1	-3	-6	-9	-10	-7	-7	0	-5	-6
	3. Consumer	-58	04-95	-29	0	08-02		-28	-24	-25	-26	-24	-24	-25	-23	-21	-21	-24	-28
	4. Retail trade	-28	03-05	-7	9	11-97		-6	-9	-10	-12	-14	-19	-23	-24	-20	-20	-28	-24
	5. Construction	-24	12-04	-7	11	09-98		-10	-5	-11	-8	-10	-16	-20	-24	-19	-20	-17	-17
	=6. ESI	71.9	04-05	100.0	123.5	04-98		99.4	100.8	96.7	89.2	89.8	79.7	72.9	82.1	82.7	83.1	75.2	71.9
NL	1. Industry	-12	05-93	-2	6	10-00		-1	0	-1	-2	-2	-1	-2	-3	-2	-2	-1	-2
	2. Services	3	06-03	17	35	12-97		7	4	5	8	10	8	7	8	7	11	7	10
	3. Consumer	-19	07-93	4	31	03-00		-10	-6	-3	1	1	-3	-3	-8	-4	-4	-3	2
	4. Retail trade	-16	12-03	13	30	10-99		-10	-10	-11	-6	-5	-3	-9	-10	-7	-10	-6	-4
	5. Construction	-25	05-03	-3	27	12-00		-17	-17	-16	-14	-12	-7	-7	-7	-6	-5	-2	-1
	=6. ESI	79.0	05-93	100.0	117.5	12-97		94.6	95.5	94.3	95.4	96.5	95.5	94.0	91.4	93.1	94.8	94.7	95.9
AT	1. Industry	-30	06-93	-12	8	03-90		-9	-8	-7	-7	-7	-6	-6	-8	-7	-9	-11	-11
	2. Services	0	01-02	16	30	03-98		16	15	16	19	17	19	16	16	13	12	9	12
	3. Consumer	-16	04-96	-1	11	07-00		-5	-2	-1	-2	-3	-1	-3	-3	1	-3	-2	0
	4. Retail trade	-29	03-03	-13	4	07-00		-5	-13	-12	-14	-8	-14	-18	-12	-15	-14	-10	-9
	5. Construction	-60	04-96	-30	-13	02-03		-23	-29	-25	-24	-25	-23	-21	-16	-25	-22	-24	-24
	=6. ESI	71.6	04-96	100.0	119.8	05-00		105.1	104.8	107.2	107.6	106.9	108.8	105.8	105.7	104.9	101.7	98.5	101.9
PL	1. Industry	-29	10-01	-14	9	09-97		-9	-6	-5	-7	-8	-9	-10	-10	-11	-11	-11	-13
	2. Services ⁽ⁿ⁾	-8	03-03	0	8	02-05		1	4	-4	6	2	3	3	1	7	8	5	8
	3. Consumer	-41	05-01	-31	-18	04-05		-25	-23	-26	-21	-24	-24	-22	-19	-20	-19	-18	-18
	4. Retail trade	-19	01-02	-6	7	07-98		-4	-4	-6	-9	-9	-9	-10	-8	-2	-6	-7	-8
	5. Construction	-63	12-02	-44	-22	03-98		-42	-40	-37	-37	-38	-32	-33	-39	-29	-32	-30	-29
	=6. ESI	75.8	02-99	100.0	142.8	02-05		119.6	132.4	108.6	136.6	123.8	124.8	125.1	124.0	137.2	142.8	137.0	140.9
PT	1. Industry ^(b)	-28	06-93	-7	7	03-98		-9	-7	-7	-6	-8	-8	-7	-11	-9	-11	-10	-6
	2. Services	-17	05-03	8	29	06-01		6	3	5	7	4	4	12	0	-2	5	-3	-3
	3. Consumer ^(b)	-49	03-03	-22	-1	07-91		-35	-31	-31	-32	-32	-34	-34	-36	-35	-34	-31	-30
	4. Retail trade ^(b)	-27	01-03	-7	4	01-99		-7	-10	-6	-8	-5	-8	-11	-7	-7	-10	-7	-7
	5. Construction	-56	02-03	-26	-1	12-97		-42	-42	-44	-40	-41	-38	-34	-32	-33	-40	-34	-39
	=6. ESI ^(b)	73.9	06-93	100.0	113.6	05-97		95.0	93.9	94.9	95.8	97.4	94.1	97.9	92.2	90.2	92.0	91.2	95.1
SI	1. Industry	-21	03-99	-3	18	06-00		3	2	4	5	6	6	3	1	0	-2	0	-3
	2. Services ⁽ⁿ⁾	12	03-05	25	34	10-02		26	27	21	25	21	23	23	20	20	22	12	15
	3. Consumer	-29	06-99	-19	-9	10-04		-19	-19	-18	-15	-17	-9	-14	-18	-20	-13	-15	-13
	4. Retail trade	3	01-01	11	23	04-99		14	13	11	13	10	12	13	14	13	10	8	14
	5. Construction ⁽ⁿ⁾	-28	05-02	-8	8	07-04		-2	8	8	7	5	-2	-5	-10	6	-3	-3	3
	=6. ESI	76.8	03-99	100.0	131.4	06-00		107.1	107.4	104.2	110.5	105.9	113.5	106.8	101.0	100.5	102.7	94.4	96.9
SK	1. Industry	-22	12-95	5	26	05-96		6	6	2	11	15	11	13	2	9	13	12	11
	2. Services ⁽ⁿ⁾	27	03-05	49	61	11-02		51	38	40	48	56	50	56	50	29	40	27	39
	3. Consumer	-50	08-99	-32	-10	04-05		-26	-22	-22	-22	-25	-25	-16	-12	-13	-13	-13	-10
	4. Retail trade	-17	10-93	8	34	11-98		14	13	10	-2	5	0	3	-7	8	5	12	15
	5. Construction	-86	07-99	-29	18	03-97		-22	-16	-18	-15	-14	-13	-23	-20	-12	-17	-13	-11
	=6. ESI	71.4	03-99	100.0	125.3	05-96		105.1	100.1	96.9	107.3	113.5	107.5	117.3	108.6	100.5	108.9	100.9	110.2
FI	1. Industry	-24	01-93	2	30	10-94		-1	11	11	10	8	5	5	5	3	4	6	-3
	2. Services	-12	09-03	25	61	09-00		-3	-1	18	16	23	31	31	30	38	33	32	25
	3. Consumer	6	11-01	15	23	02-00		14	15	12	17	15	14	14	16	13	16	17	14
	4. Retail trade	-17	11-00	-4	10	05-04		10	0	2	-4	-3	1	-6	4	-1	-8	-4	-1
	5. Construction	-97	09-91	-19	48	06-98		7	-1	0	2	-1	0	-4	4	-7	12	16	21
	=6. ESI	74.6	04-91	100.0	120.7	11-94		99.7	102.8	106.5	105.7	106.7	106.4	105.5	106.6	106.4	105.8	107.1	101.4
SE	1. Industry	-29	10-01	-5	15	05-00		3	6	8	4	8	5	5	4	6	0	-7	-9
	2. Services	-24	01-03	16	46	12-00		24	29	28	26	30	38	29	23	35	30	32	31
	3. Consumer	-10	09-96	8	25	03-00		6	6	4	6	6	8	7	10	8	8	7	6
	4. Retail trade	-8	09-01	6	27	04-00		4	6	0	6	1	0	-3	0	0	2	0	1
	5. Construction	-83	12-93	-39	25	01-01		-28	-21	-9	-18	-6	-1	4	14	10	3	-3	6
	=6. ESI	79.0	10-01	100.0	127.1	03-00		108.3	110.6	111.6	110.8	113.2	115.2	111.2	110.0	113.8	110.0	107.0	105.1
UK	1. Industry	-40	02-91	-11	11	02-95		3	0	-4	2	-1	0	-4	-3	-4	0	-5	-10
	2. Services	-20	12-02	15	37	10-97		17	16	16	19	27	25	19	19	10	24	3	-1
	3. Consumer	-28	10-92	-8	7	10-97		-5	-5	-3	-4	-3	-2	0	0	0	0	3	0
	4. Retail trade	-27	09-92	-4	20	06-04		15	20	5	5	-3	4	0	-3	-5	-9	-13	-19
	5. Construction	-79	06-91	-20	5	08-04		2	3	4	5	3	-3	1	-1	-2	-3	-2	-7
	=6. ESI	71.1	02-91	100.0	118.4	12-97		112.8	111.5	108.0	110.9	111.8	112.6	110.3	111.2	108.0	113.5	104.7	100.0

In the tables: (s.a.)

TABLE 2a: **Monthly survey of manufacturing industry (s.a.)^(a)**

		Since 01/1990						2004						2005					
		Min.		Ave.		Max.		May	June	July	Aug.	Sep.	Oct.	Nov.	Dec.	Jan.	Feb.	Mar.	Apr.
		Value	Date	Value	Date	Value	Date												
INDUSTRIAL CONFIDENCE INDICATOR	EU	-28	07-93	-8	7	12-94	-4	-3	-3	-3	-2	-2	-3	-3	-4	-5	-7	-9	
	Euro area	-31	06-93	-8	6	05-00	-5	-5	-4	-4	-3	-3	-3	-4	-5	-6	-8	-9	
	BE	-33	04-93	-11	5	06-00	-3	-5	3	-1	0	0	-2	-5	-3	-6	-7	-11	
	CZ	-31	03-99	-1	27	06-00	5	11	9	10	10	12	12	11	7	8	7	5	
	DK	-26	12-98	-2	16	09-94	4	8	11	6	3	3	-3	2	3	1	1	-5	
	DE	-35	04-93	-11	11	09-90	-9	-10	-9	-8	-7	-6	-6	-6	-6	-9	-11	-13	
	EE	-31	07-92	4	19	03-01	18	17	10	10	12	7	5	6	12	15	17	13	
	EL	-12	09-90	1	13	03-00	7	4	0	-1	-3	-4	-4	-4	-3	-4	-7	-4	
	ES	-44	01-93	-9	7	04-00	-1	-4	-3	-3	-2	-2	-1	-4	-1	-5	-4	-6	
	FR	-41	06-93	-8	15	06-00	-3	-1	-2	-2	-1	-1	-3	-1	-5	-5	-9	-10	
	IE	-23	11-01	-2	21	11-99	3	5	1	-13	-5	-4	-9	-7	-12	1	0	-2	
	IT	-22	04-93	-4	13	07-95	-4	-3	-1	-1	0	1	-1	-2	-2	-6	-7	-7	
	CY	-9	04-03	3	13	04-02	5	5	10	10	6	8	1	10	4	3	6	3	
	LV	-45	04-93	-11	7	05-04	7	4	3	3	4	3	3	2	2	3	3	4	
	LT	-37	11-98	-15	1	07-04	-3	-4	1	-5	-3	-1	-3	-12	-9	-7	-3	-4	
	LU	-35	05-92	-10	26	04-95	6	11	14	18	17	8	-1	-7	-1	-6	2	-6	
	HU	-15	05-99	-3	8	12-97	-6	0	-5	-2	-3	-5	-11	-5	-7	-12	-12	-14	
	NL	-12	05-93	-2	6	10-00	-1	0	-1	-2	-2	-1	-2	-3	-2	-2	-1	-2	
	AT	-30	06-93	-12	8	03-90	-9	-8	-7	-7	-7	-6	-6	-8	-7	-9	-11	-11	
	PL	-29	10-01	-14	9	09-97	-9	-6	-5	-7	-8	-9	-10	-10	-11	-11	-11	-13	
PT	-28	06-93	-7	7	03-98	-9	-7	-7	-6	-8	-8	-7	-11	-9	-11	-10	-6		
SI	-21	03-99	-3	18	06-00	3	2	4	5	6	6	3	1	0	-2	0	-3		
SK	-22	12-95	5	26	05-96	6	6	2	11	15	11	13	2	9	13	12	11		
FI	-24	01-93	2	30	10-94	-1	11	11	10	8	5	5	5	3	4	6	-3		
SE	-29	10-01	-5	15	05-00	3	6	8	4	8	5	5	4	6	0	-7	-9		
UK	-40	02-91	-11	11	02-95	3	0	-4	2	-1	0	-4	-3	-4	0	-5	-10		
PRODUCTION EXPECTATIONS	EU	-16	11-92	6	23	12-94	13	13	10	11	13	13	12	10	9	9	7	5	
	Euro area	-18	12-92	5	21	12-94	10	10	8	8	11	11	10	9	7	6	6	5	
Component of the industrial confidence indicator	BE	-36	04-93	-3	16	12-94	4	2	9	8	7	8	6	2	0	0	3	3	
	CZ	-26	05-93	22	61	05-95	25	28	22	21	30	34	33	28	19	22	24	22	
	DK	-23	12-98	10	30	02-98	8	16	21	17	9	11	10	16	14	10	17	4	
	DE	-26	11-92	1	20	12-94	6	4	3	3	6	7	5	2	2	2	0	-2	
	EE	-70	04-92	19	68	03-02	29	25	19	20	17	20	13	19	24	37	38	25	
	EL	3	02-91	26	44	02-00	31	23	18	16	14	20	20	23	22	23	19	22	
	ES	-19	01-93	5	17	12-00	16	7	6	3	13	8	12	7	9	3	9	12	
	FR	-30	07-93	6	27	10-00	12	14	11	12	14	11	11	16	9	9	7	4	
	IE	-22	11-01	9	35	11-99	20	16	12	-2	-10	1	-4	3	-10	24	1	7	
	IT	-12	12-92	14	31	12-94	14	16	12	18	17	19	18	16	14	14	10	11	
	CY	1	11-01	13	35	12-04	8	12	14	17	15	14	17	35	9	5	18	10	
	LV	-21	04-93	15	41	03-02	22	16	18	20	21	19	21	21	18	19	19	19	
	LT	-22	04-94	11	35	08-97	16	21	21	21	21	19	22	8	6	6	16	26	
	LU	-42	10-91	-4	28	04-95	22	16	27	24	23	15	6	-2	16	14	15	4	
	HU	-6	04-05	13	34	12-97	1	10	1	10	12	2	-5	7	6	-3	-6	-6	
	NL	-4	04-93	6	15	11-99	8	8	3	-1	4	5	5	2	2	5	8	6	
	AT	-19	06-93	4	18	11-03	7	9	7	10	9	13	11	6	9	6	11	9	
	PL	-4	10-01	21	44	02-03	19	26	24	26	20	21	17	17	16	17	17	16	
	PT	-11	03-93	5	21	01-97	4	4	1	0	2	0	4	0	-5	-3	0	10	
	SI	10	10-01	23	42	06-00	25	28	28	39	40	38	24	28	30	26	29	24	
SK	-12	12-95	31	62	12-97	40	47	4	38	53	43	46	6	15	38	36	37		
FI	-26	06-91	13	44	07-04	18	44	44	33	34	28	35	28	27	20	30	14		
SE	-19	05-91	15	46	05-00	31	38	35	28	37	29	30	35	38	23	9	12		
UK	-38	02-91	6	33	02-95	21	16	7	18	14	18	13	3	8	16	9	5		
ORDER BOOKS	EU	-50	07-93	-20	1	02-95	-16	-15	-12	-12	-12	-11	-13	-11	-12	-15	-17	-20	
	Euro area	-55	07-93	-19	5	06-00	-18	-16	-12	-13	-12	-11	-12	-12	-11	-15	-17	-19	
Component of the industrial confidence indicator	BE	-51	05-93	-20	11	06-00	-13	-11	-4	-9	-7	-6	-9	-11	-9	-18	-17	-23	
	CZ	-50	12-98	-7	30	01-01	-2	4	5	5	5	4	5	3	3	-3	-3		
	DK	-41	04-99	-6	32	12-94	4	9	10	6	6	4	-10	-2	2	3	-5	-7	
	DE	-61	07-93	-24	12	07-90	-24	-22	-19	-19	-17	-16	-15	-12	-13	-17	-19	-22	
	EE	-43	10-92	0	29	06-01	15	13	1	4	10	-2	1	2	7	5	10	10	
	EL	-30	12-93	-13	7	05-98	-3	-5	-9	-10	-12	-17	-18	-20	-17	-21	-24	-20	
	ES	-65	01-93	-16	11	07-98	-9	-9	-5	-4	-4	-1	-2	-7	-3	-8	-10	-14	
	FR	-64	06-93	-16	27	06-00	-14	-11	-10	-10	-12	-11	-13	-14	-12	-14	-19	-18	
	IE	-36	06-93	-7	24	12-99	-9	-4	-22	-32	-8	-6	-12	-10	-13	-14	2	-9	
	IT	-47	06-93	-16	13	02-95	-19	-17	-9	-13	-10	-12	-12	-11	-12	-21	-20	-22	
	CY	-39	02-03	-20	-3	10-03	-10	-11	-3	-9	-8	-7	-13	-12	-8	-12	-6	-4	
	LV	-79	07-93	-41	-7	12-03	-10	-13	-16	-15	-14	-17	-17	-19	-18	-16	-14	-13	
	LT	-79	11-98	-43	-9	11-93	-24	-26	-20	-34	-29	-22	-27	-40	-29	-25	-24	-30	
	LU	-64	02-92	-18	34	12-97	-7	10	9	19	18	11	-4	-7	-12	-20	-11	-12	
	HU	-40	03-03	-19	0	04-98	-16	-15	-15	-15	-15	-15	-20	-20	-24	-28	-23	-33	
	NL	-25	01-93	-8	6	11-00	-7	-6	-4	-3	-6	-5	-6	-6	-4	-4	-5	-8	
	AT	-57	04-96	-25	11	03-90	-27	-26	-23	-24	-23	-21	-22	-23	-25	-27	-32	-31	
	PL	-77	01-02	-58	8	09-97	-45	-46	-41	-47	-42	-45	-43	-46	-47	-48	-47	-50	
	PT	-52	07-93	-19	9	03-98	-25	-16	-13	-10	-32	-19	-19	-29	-15	-21	-24	-26	
	SI	-51	03-99	-19	12	06-00	-11	-13	-10	-13	-7	-9	-7	-11	-14	-19	-14	-18	
SK	-70	03-99	-8	49	09-94	-24	-28	0	-2	-6	-4	0	4	10	5	3	-8		
FI	-70	09-91	-13	40	11-94	-20	-1	0	-1	-2	2	-4	2	1	6	2	0		
SE	-67	03-92	-23	25	12-94	-11	-5	-6	-9	-6	-9	-5	-8	-7	-11	-14	-20		
UK	-62	07-91	-22	11	02-95	-4	-10	-7	0	-4	-4								

TABLE 2a: (continued) Monthly survey of manufacturing industry (s.a.)^(a)

		Since 01/1990						2004						2005					
		Min.		Ave.		Max.		May	June	July	Aug.	Sep.	Oct.	Nov.	Dec.	Jan.	Feb.	Mar.	Apr.
		Value	Date	Value	Date	Value	Date												
STOCKS OF FINISHED PRODUCTS ^(b)	EU	3	12-94	11	23	06-93	7	8	8	8	8	8	8	8	9	9	12	13	
	Euro area	2	11-94	11	24	04-93	7	8	8	7	8	8	8	8	9	10	12	13	
Component of the industrial confidence indicator	BE	-4	02-95	9	26	10-01	2	4	-3	1	1	3	2	5	0	1	6	12	
	CZ	-12	04-00	17	46	08-93	7	0	-1	-4	6	2	0	0	3	0	0	5	
	DK	-7	03-94	10	28	06-99	0	0	-1	5	6	6	8	9	5	3	10	11	
	DE	-9	09-90	10	25	07-93	9	11	10	8	9	8	8	9	9	11	13	13	
	EE	-16	05-92	7	39	06-93	-11	-12	-10	-7	-10	-2	1	2	-5	-2	-4	-5	
	EL	1	06-94	12	22	09-90	8	7	8	10	11	13	14	13	13	13	15	16	
	ES	-1	11-02	15	47	01-93	10	9	10	10	16	13	12	11	10	11	12	16	
	FR	-2	04-00	13	34	06-93	7	7	8	8	6	4	6	6	12	10	15	16	
	IE	-13	12-99	6	23	11-93	1	-3	-13	6	-4	6	11	12	12	7	2	5	
	IT	-1	07-95	8	17	10-90	6	7	6	8	7	5	7	10	9	10	11	11	
	CY	-33	09-01	-16	0	11-04	-16	-15	-19	-23	-11	-18	0	-7	-12	-16	-7	-4	
	LV	-12	03-04	8	43	07-93	-9	-7	-6	-4	-5	-5	-4	-5	-6	-5	-4	-5	
	LT	-16	01-95	13	49	01-94	0	8	-3	2	2	-1	3	4	3	2	1	7	
	LU	-22	03-95	8	31	03-02	-4	-8	-6	-10	-10	1	4	11	8	12	0	9	
	HU	-7	11-03	3	15	12-98	2	-4	0	1	4	4	7	2	3	4	8	3	
	NL	-1	12-94	5	11	06-91	4	3	4	2	4	4	5	4	5	5	5	5	
	AT	4	03-90	14	26	04-96	7	7	5	6	7	8	6	6	6	7	12	11	
	PL	-11	10-94	3	20	02-99	0	-2	-2	1	2	3	2	2	3	2	3	4	
	PT	-7	09-04	8	25	06-93	5	11	8	8	-7	4	5	3	8	8	6	2	
	SI	-1	06-00	14	28	02-96	6	10	8	10	15	11	8	15	16	14	15	16	
SK	-27	02-01	9	55	05-94	-2	0	-2	4	3	6	8	3	-3	4	2	-4		
FI	-20	04-95	4	31	01-96	2	10	11	2	9	14	15	15	18	14	13	23		
SE	3	03-00	17	37	11-01	12	15	6	7	9	6	10	16	13	12	15	20		
UK	6	03-04	17	32	11-98	8	7	13	13	14	13	12	7	8	8	13	15		
PRODUCTION TREND OBSERVED IN RECENT MONTHS	EU	-23	01-93	-1	19	01-95	5	6	9	7	7	6	3	6	5	4	-1	-4	
	Euro area	-26	04-93	-2	17	01-95	2	4	7	4	4	2	0	4	4	2	-3	-4	
BE	-20	02-93	-1	16	05-97	2	2	11	3	5	5	-6	-1	4	-4	-1	-4		
CZ	-32	10-98	12	42	11-00	14	22	31	21	11	20	22	31	24	20	8	8		
DK	-21	04-99	10	41	09-94	19	25	21	15	13	15	12	-1	2	3	-1	1		
DE	-32	02-02	-4	22	12-90	-4	2	6	0	-1	-5	-7	3	-1	-3	-8	-9		
EE	-24	03-99	13	56	06-01	36	34	28	28	21	15	12	10	14	9	22	30		
EL	-5	10-90	14	36	01-00	21	24	21	18	14	6	4	5	10	6	7	-3		
ES	-44	04-93	0	21	04-95	4	4	6	11	8	9	-1	3	6	5	2	-6		
FR	-38	07-93	4	36	01-95	16	15	13	11	9	14	14	7	16	15	9	6		
IE	-25	10-01	6	38	03-00	12	9	9	-15	22	-2	6	-17	-4	9	-3	10		
IT	-36	06-93	-10	14	03-95	-14	-15	-9	-6	-5	-8	-10	-6	-10	-13	-15	-16		
CY	-33	04-03	-10	14	04-04	-2	-7	-3	-2	-27	7	-15	-4	-8	-8	-6	11		
LV	-49	04-93	2	29	06-01	18	10	9	14	10	7	7	13	10	9	11	13		
LT	-36	07-94	0	34	04-98	24	6	14	12	2	9	11	11	7	7	-6	-16		
LU	-41	04-92	-2	32	04-95	29	22	30	30	27	12	19	21	17	12	-7	1		
HU	-30	06-99	-1	27	04-98	8	7	9	8	2	3	-4	-6	-9	-11	-16	-23		
NL	-12	05-93	3	14	10-97	9	10	11	5	1	3	-1	2	3	-2	-1	3		
AT	-28	06-93	5	27	03-90	15	11	17	13	21	16	16	12	14	7	4	4		
PL	-18	07-96	0	23	04-04	9	9	14	6	6	12	6	8	21	5	-3	-12		
PT	-18	01-93	-1	15	08-94	-7	-3	8	-1	-14	-16	-9	-3	1	-5	-10	-18		
SI	-20	02-99	8	39	05-00	6	6	13	13	9	12	6	11	7	1	2	8		
SK	-30	12-96	17	78	12-03	7	8	49	27	-5	46	46	69	17	27	24	30		
FI	-28	06-91	11	53	12-04	21	28	13	32	35	34	30	53	27	42	8	13		
SE	-28	07-91	9	48	12-94	23	25	28	29	31	24	24	18	15	17	13	12		
UK	-46	06-91	-2	34	03-95	17	10	9	19	19	16	7	14	3	13	9	-7		
EXPORT ORDER BOOKS	EU	-45	06-93	-20	1	02-95	-15	-12	-9	-10	-10	-10	-11	-11	-12	-12	-15	-19	
	Euro area	-52	06-93	-21	3	06-00	-17	-13	-9	-10	-10	-10	-11	-12	-10	-12	-15	-18	
BE	-56	05-93	-22	7	06-00	-5	-5	-4	-6	-5	-1	-4	-10	-8	-22	-20	-30		
CZ	-41	12-98	-3	26	09-00	-4	2	3	5	5	4	1	4	1	0	-10	-9		
DK	-39	04-99	-4	25	09-94	6	10	12	7	8	2	-8	1	-1	-4	-6	-8		
DE	-60	08-93	-28	0	02-90	-19	-17	-11	-12	-11	-11	-11	-11	-9	-8	-12	-14		
EE	-37	03-99	1	25	03-01	2	-2	0	-2	10	0	-5	-5	-1	0	-4	3		
EL	-36	05-03	-15	13	03-95	-9	-7	-11	-14	-18	-21	-21	-24	-17	-18	-19	-21		
ES	-55	01-93	-19	6	05-95	-21	-16	-15	-9	-15	-10	-15	-11	-9	-15	-15	-23		
FR	-65	07-93	-13	36	06-00	-14	-5	-1	-2	-4	-5	-7	-9	-8	-9	-13	-15		
IE	-53	09-93	-7	38	04-00	17	18	-34	-42	-20	-3	2	-8	-2	-20	-1	-27		
IT	-43	09-92	-18	19	02-95	-21	-18	-12	-17	-12	-14	-15	-16	-15	-20	-23	-24		
CY	-51	05-03	-27	-4	03-05	-15	-21	-12	-13	-9	-10	-11	-21	-18	-34	-4	-19		
LV	-59	12-98	-37	-15	12-03	-19	-19	-20	-22	-20	-21	-23	-21	-21	-20	-19	-23		
LT	-65	04-99	-37	-14	06-01	-20	-25	-20	-38	-29	-23	-32	-45	-31	-27	-31	-29		
LU	-75	11-91	-23	45	04-00	-20	4	-4	6	5	-2	-18	-20	-25	-26	-28	-22		
HU	-44	12-02	-15	7	02-98	-15	-19	-16	-19	-19	-22	-21	-27	-24	-30	-29	-32		
NL	-24	01-93	-6	11	09-00	-3	-1	3	4	-1	-2	-2	-2	1	-1	-3	-3		
AT	-58	04-96	-34	-1	03-90	-38	-33	-32	-31	-35	-34	-31	-34	-35	-37	-39	-41		
PL	-75	05-99	-57	13	07-97	-49	-48	-47	-49	-50	-49	-50	-52	-52	-52	-54	-53		
PT	-59	04-93	-16	22	01-95	-22	-18	-18	-19	-22	-21	-17	-16	-20	-18	-22	-25		
SI	-53	05-99	-16	15	06-00	-11	-11	-6	-5	0	-4	-5	-11	-13	-13	-13	-9		
SK	-57	03-99	-9	53	01-94	-22	-25	-17	-21	-5	-5	-4	4	6	7	1	-19		
FI	-43	01-99	-8	42	01-95	-19	-7	-2	-2	-8	-2	-6	1	-3	-2	-6	-3		
SE	-45	12-01	5	45	08-91	-4	5	8	-1	8	-2	1	1	1	-7	-19	-19		
UK	-55	10-98	-22	19	04-95	-2	-10	-10	-4	-5	-11	-11	-6	-17	-8	-5	-24		

TABLE 2a: (continued) **Monthly survey of manufacturing industry (s.a.)** ^(a)

		Since 01/1990						2004						2005					
		Min.		Ave.		Max.		May	June	July	Aug.	Sep.	Oct.	Nov.	Dec.	Jan.	Feb.	Mar.	Apr.
		Value	Date	Value	Date	Value	Date												
EMPLOYMENT EXPECTATIONS	EU	-39	06-93	-15	2	11-00	-12	-13	-12	-12	-12	-11	-12	-14	-12	-12	-11	-13	
	Euro area	-42	06-93	-14	4	11-00	-13	-13	-13	-14	-13	-12	-12	-14	-12	-12	-12	-13	
	BE	-26	09-93	-9	9	09-00	-9	-6	-4	-5	-8	-8	-11	-10	-10	-8	-10	-12	
	CZ	-58	06-99	-26	2	03-01	-8	-6	-6	-5	-4	-5	-4	-3	-5	-7	-7	-8	
	DK	-23	06-93	-3	13	03-98	3	3	5	0	-1	-4	-6	-9	0	-3	3	-10	
	DE	-52	06-93	-18	8	02-90	-20	-17	-18	-18	-14	-15	-14	-18	-17	-17	-21	-21	
	EE	-78	04-92	-13	16	03-05	5	7	2	3	-1	-5	-1	2	8	11	16	14	
	EL	-12	12-04	-2	12	05-02	-5	-3	2	1	1	-7	-2	-12	-8	-6	-3	-11	
	ES	-53	06-93	-9	9	03-01	6	0	-7	-11	-12	-13	-11	-9	-4	-2	-3	2	
	FR	-50	09-93	-17	12	09-00	-17	-17	-18	-19	-20	-15	-19	-20	-17	-18	-12	-15	
	IE	-34	12-92	-10	16	09-00	-9	-8	-22	-18	-16	-8	-21	-13	-10	-6	-5	-1	
	IT	-30	08-96	-4	11	11-00	-4	-4	-3	-5	-3	0	0	-5	-2	-2	-3	-3	
	CY	-15	04-02	10	41	10-04	4	5	29	7	4	41	11	10	33	11	8	20	
	LV	-51	04-93	-9	8	10-04	4	3	3	5	6	8	7	5	6	3	4	5	
	LT	-59	04-94	-29	4	03-03	1	4	-3	-3	-1	-5	-2	-11	-12	-5	2	1	
	LU	-55	12-91	-27	1	09-01	-23	-23	-14	-15	-13	-23	-20	-16	-20	-19	-26	-12	
	HU	-60	12-91	-17	10	10-97	-15	-15	-13	-7	-6	-12	-16	-10	-13	-14	-13	-16	
	NL	-30	06-93	-8	15	06-90	-11	-12	-7	-11	-10	-12	-9	-11	-9	-9	-10	-11	
	AT	-29	01-96	-10	6	09-00	-3	-4	-5	-3	-5	-2	-4	-4	-3	-3	-6	-6	
	PL	-55	12-99	-25	-4	03-05	-13	-11	-11	-13	-8	-5	-7	-6	-8	-8	-4	-7	
	PT	-35	06-93	-15	-2	02-90	-21	-23	-21	-19	-22	-24	-20	-23	-19	-25	-22	-22	
SI	-42	10-95	-23	-10	07-04	-14	-14	-10	-13	-13	-14	-18	-19	-18	-18	-18	-18		
SK	-56	06-99	-24	2	06-96	-22	-30	-22	-18	-13	-13	-12	-18	-12	-14	-16	-18		
FI	-60	06-91	-16	15	12-00	-19	-28	-13	-13	-19	-18	-13	-14	-21	-6	-6	-3		
SE	-51	06-92	-19	23	12-94	-16	-19	-19	-10	-11	-8	-11	-14	-16	-18	-17	-23		
UK	-50	03-91	-20	2	06-97	-7	-11	-8	-3	-5	-11	-13	-12	-12	-12	-8	-12		
SELLING-PRICE EXPECTATIONS	EU	-13	01-99	5	26	02-95	7	8	7	7	9	8	13	13	10	10	6	2	
	Euro area	-11	12-98	5	25	02-95	6	6	6	5	8	8	12	13	9	9	5	2	
	BE	-18	02-96	2	26	12-94	10	11	10	6	14	16	15	13	14	4	2	0	
	CZ	-6	12-98	21	71	03-95	23	24	21	16	13	20	19	10	11	10	11	5	
	DK	-12	11-01	-1	12	11-04	2	9	8	3	1	4	12	8	10	0	2	-2	
	DE	-8	12-93	6	23	02-95	7	7	7	8	9	9	12	15	15	11	6	2	
	EE	-28	03-99	16	86	04-92	31	26	26	19	21	20	22	26	22	19	12	14	
	EL	-4	01-99	18	41	10-90	14	14	12	12	11	11	11	9	9	10	9	7	
	ES	-18	04-93	3	35	04-95	2	3	4	3	4	5	12	15	8	7	7	-4	
	FR	-26	01-99	0	24	02-90	1	0	-4	-2	1	0	12	13	0	7	3	0	
	IE	-25	11-92	-3	29	11-03	6	1	4	5	11	-2	1	-4	-5	2	-1	-8	
	IT	-10	12-98	11	40	03-95	9	10	11	9	14	14	15	15	11	11	7	9	
	CY	-12	10-01	6	36	10-03	21	23	7	9	5	-5	8	6	3	-2	4	7	
	LV	-17	12-98	16	50	07-94	28	23	21	18	19	24	24	28	24	19	17	17	
	LT	-20	01-00	15	75	11-93	13	2	9	6	-2	-4	-5	-7	-8	1	7	7	
	LU	-50	08-91	-2	53	12-94	18	5	13	17	12	26	31	22	10	3	13	3	
	HU	16	04-05	30	51	01-01	28	31	30	28	29	31	31	24	23	24	16	16	
	NL	-7	01-99	5	20	12-94	8	9	12	6	8	13	10	9	11	1	1	-4	
	AT	-23	03-96	-1	17	03-90	5	4	5	3	9	11	10	9	6	2	-1	0	
	PL	-6	06-02	15	46	01-93	26	26	20	17	13	12	1	-1	3	4	-4	-3	
	PT	-9	05-03	8	29	10-90	0	-1	3	4	2	-2	0	-7	3	1	-2		
SI	-24	04-99	-8	5	01-01	-2	-3	-2	-1	3	4	3	1	0	0	-3	-8		
SK	-33	03-01	31	81	04-95	35	19	26	20	9	16	6	20	-12	0	28	12		
FI	-34	03-96	2	49	08-94	-5	9	4	13	13	5	14	14	17	31	15	4		
SE	-20	11-96	5	37	12-94	18	21	15	22	16	17	20	19	21	13	1	2		
UK	-30	01-99	0	29	02-95	2	7	7	12	9	3	15	13	15	16	15	5		

(a) The indicator is the arithmetic average of the balances (%) of the questions on production expectations, order-books and stocks (the last with inverted sign).

(b) Highest figure is considered as minimum, lowest figure is considered as maximum.

TABLE 2b: Quarterly survey of manufacturing industry

Capacity utilisation in manufacturing industry (%) (s.a.)^(a)

	Since 01/1990					2003		2004				2005	
	Min.		Ave.	Max.		III	IV	I	II	III	IV	I	II
	Value	Date		Value	Date								
EU	77.5	III-93	81.8	85.5	I-90	80.6	80.8	80.8	80.9	82.2	82.0	81.8	81.0
Euro area	77.1	III-93	82.1	85.8	II-90	80.9	81.4	81.1	81.1	82.0	82.1	81.9	80.9
BE	74.5	II-93	80.0	84.8	I-01	77.9	79.0	79.4	79.6	81.5	80.9	80.9	79.4
CZ	70.9	IV-91	81.6	87.1	I-01	84.5	85.0	85.5	85.6	86.3	86.7	86.4	86.0
DK	76.4	II-93	81.8	86.1	III-98	80.5	79.8	81.5	81.9	83.0	82.8	81.9	83.3
DE	78.3	III-93	84.2	89.5	I-91	81.0	82.9	82.8	82.6	83.4	83.9	83.9	81.9
EE	52.2	IV-93	65.5	77.5	II-05	73.1	73.8	73.0	75.5	74.3	74.8	75.7	77.5
EL	71.9	I-05	76.3	79.3	II-01	76.8	76.1	77.5	74.6	76.3	74.1	71.9	72.4
ES	71.1	III-93	78.1	81.0	III-98	79.5	79.3	77.0	79.7	79.8	79.3	80.1	80.1
FR	78.5	III-94	84.7	89.1	IV-00	84.8	84.4	84.2	83.2	84.3	84.6	84.0	83.3
IE	69.7	II-05	76.4	83.3	I-96	77.1	73.6	74.4	77.7	75.3	75.0	72.2	69.7
IT	71.6	III-93	76.4	80.2	I-90	77.4	76.1	76.3	75.8	76.9	76.7	76.4	76.4
CY	61.6	IV-02	70.8	75.9	IV-01	72.4	72.8	72.2	72.2	75.4	70.7	72.5	71.1
LV	44.6	II-93	59.6	74.9	I-04	66.7	72.4	74.9	72.7	72.7	69.1	70.1	71.7
LT	44.1	IV-95	55.3	69.8	I-05	65.7	68.8	68.2	68.4	69.1	68.7	69.8	:
LU	77.8	IV-96	83.7	89.2	I-01	84.8	83.9	83.5	85.6	87.4	86.0	84.9	83.0
HU	76.1	I-96	79.9	87.1	IV-00	79.9	79.2	81.6	80.3	82.2	80.0	80.5	82.2
NL	80.3	III-93	83.7	86.2	II-90	81.0	81.4	82.1	82.8	83.1	82.7	82.3	82.0
AT	79.1	IV-02	81.9	85.0	III-00	79.4	80.3	80.0	80.4	82.3	82.4	82.2	81.8
PL	66.6	I-02	73.7	78.2	III-98	74.5	75.6	76.1	76.6	78.1	77.4	77.6	74.8
PT	72.6	IV-93	79.5	84.3	IV-03	76.4	84.3	80.6	79.3	81.4	80.2	81.6	79.2
SI	76.3	III-96	79.9	82.5	II-05	79.6	82.3	81.9	81.6	81.7	81.2	81.7	82.5
SK	65.3	IV-03	78.6	87.1	II-01	73.6	65.3	78.6	71.3	74.4	84.2	75.6	79.1
FI	80.7	III-03	85.3	89.9	III-98	80.7	82.0	82.8	83.4	84.7	86.9	85.5	87.5
SE	82.2	III-01	85.0	88.5	IV-00	82.9	83.8	83.7	85.2	86.9	87.1	86.7	87.3
UK	77.4	I-93	81.1	85.4	II-95	77.9	77.5	78.7	79.7	82.7	81.0	81.3	80.2

Production capacity in manufacturing industry^{(a)(b)(c)}

	Since 01/1990					2003		2004				2005	
	Min.		Ave.	Max.		III	IV	I	II	III	IV	I	II
	Value	Date		Value	Date								
EU	5	I-90	20	38	III-93	27	25	21	20	17	16	18	21
Euro area	2	I-90	18	37	III-93	25	24	20	19	16	16	17	20
BE	10	II-90	28	54	III-93	40	35	29	26	21	17	24	29
CZ	-7	II-00	8	28	III-99	9	8	7	7	2	0	3	7
DK	-5	I-98	16	33	II-93	25	26	19	16	6	9	10	16
DE	-6	IV-90	19	42	II-93	31	28	23	20	19	19	20	24
EE	-8	I-05	17	38	I-96	6	-2	7	2	-6	3	-8	-5
EL	0	II-00	11	21	II-94	13	12	2	12	13	14	18	20
ES	-2	II-00	7	20	II-93	6	9	11	7	5	3	5	6
FR	-13	III-00	16	46	III-93	20	23	14	15	14	9	10	15
IE	-4	III-00	12	29	III-93	22	27	19	18	23	15	17	11
IT	12	I-90	25	36	I-93	25	31	27	28	23	26	29	28
CY	-12	III-01	4	27	II-05	0	4	7	10	8	21	10	27
LV	-6	III-03	18	53	III-93	-6	0	4	0	-1	0	0	0
LT	5	IV-02	28	68	IV-93	15	24	6	16	13	16	20	21
LU	-12	I-98	21	57	IV-96	23	33	40	25	3	-6	-4	7
HU	-41	IV-03	23	44	II-03	44	-41	20	17	15	42	23	38
NL	-3	I-01	5	16	III-93	10	8	8	7	2	2	4	2
AT	0	III-00	14	22	III-03	22	17	17	16	13	11	15	15
PL	14	II-05	33	56	III-92	27	19	20	31	23	17	16	14
PT	1	III-00	14	41	III-93	23	21	21	18	18	20	22	18
SI	8	II-01	21	41	III-96	21	13	17	11	9	10	13	14
SK	-12	III-04	7	27	I-94	3	1	2	0	-12	7	2	1
FI	-21	II-95	24	81	IV-91	44	33	29	29	20	7	11	15
SE	-19	III-00	7	30	IV-01	27	18	5	4	6	4	7	17
UK	10	II-95	32	55	III-91	41	41	33	32	25	27	27	32

TABLE 2b (continued): Quarterly survey of manufacturing industry

Estimated number of months' production assured by orders on hand in manufacturing industry (s.a.) ^(a)													
	Since 01/1990					2003		2004				2005	
	Min.		Ave.	Max.		III	IV	I	II	III	IV	I	II
	Value	Date	Value	Date									
EU	2.6	III-93	3.1	3.6	II-90	3.2	3.3	3.3	3.3	3.4	3.3	3.3	3.2
Euro area	2.6	III-93	3.1	3.6	II-90	3.2	3.1	3.1	3.1	3.2	3.1	3.1	3.0
BE	2.8	III-03	3.2	4.2	III-90	2.8	2.8	2.9	3.1	3.1	3.2	3.1	3.0
CZ	7.4	III-03	13.5	22.5	II-01	7.4	9.7	9.8	10.9	7.9	10.1	9.3	10.2
DK	1.4	III-00	1.9	2.5	III-90	1.4	1.5	1.6	1.4	1.6	1.4	1.5	1.5
DE	2.4	IV-93	2.8	3.3	III-90	2.7	2.8	2.7	2.6	2.7	2.6	2.6	2.6
EE	3.9	II-05	5.6	7.2	II-02	5.0	5.5	4.1	4.5	4.4	4.8	4.8	3.9
EL	4.5	II-05	5.6	6.6	III-90	5.1	5.2	6.2	4.7	4.5	4.9	4.8	4.5
ES	1.5	II-93	2.6	4.2	I-05	3.5	3.4	3.3	3.2	3.5	3.4	4.2	3.8
FR	2.5	III-97	3.2	4.4	I-02	3.6	3.5	3.7	3.5	3.7	3.3	3.2	2.9
IE	1.6	IV-93	2.4	3.2	I-05	2.6	2.7	3.0	2.9	3.0	3.0	3.2	2.6
IT	2.1	III-96	3.6	4.7	II-90	3.5	3.4	3.3	3.3	3.5	3.4	3.1	3.3
CY	2.7	III-01	3.8	4.9	II-05	3.4	3.9	3.8	3.1	3.9	4.7	4.5	4.9
LV	3.0	II-03	3.4	4.2	I-01	3.3	3.5	3.2	3.0	3.3	3.4	3.0	3.5
LT	2.1	III-01	2.8	3.2	IV-04	3.2	3.0	3.0	2.7	2.9	3.2	3.0	2.6
LU	1.9	IV-93	2.7	3.5	II-05	2.7	2.8	2.9	3.1	3.3	3.2	3.4	3.5
HU	2.9	III-02	4.1	5.1	IV-00	3.4	4.8	4.0	3.8	4.6	4.2	5.0	3.8
NL	2.1	I-95	2.6	3.3	I-91	2.6	2.6	2.6	2.7	2.7	2.8	2.8	2.8
AT	2.9	I-01	3.7	5.9	IV-01	3.7	3.5	3.8	4.1	4.2	3.6	4.0	4.3
PL	5.3	III-01	6.2	7.8	I-05	6.0	7.0	7.1	7.4	6.8	7.0	7.8	7.6
PT	2.7	III-03	3.9	6.4	II-04	2.7	3.1	3.3	6.4	4.6	5.0	4.2	3.2
SI	2.8	IV-98	4.3	5.0	IV-00	4.3	4.4	4.3	4.4	4.1	4.1	3.9	3.9
SK	5.3	I-04	7.7	9.5	I-01	8.5	5.9	5.3	5.8	6.5	6.9	6.7	5.7
FI	2.5	II-05	3.3	4.3	III-98	3.0	2.9	2.5	2.7	2.5	3.1	3.7	2.5
SE	1.8	IV-96	2.3	3.3	II-04	2.0	2.6	3.3	3.3	2.9	3.0	2.8	3.1
UK	2.4	I-95	3.1	3.8	I-99	3.0	3.1	3.1	2.8	3.6	3.3	3.2	3.3
New orders in manufacturing industry (s.a.) ^{(a)(c)}													
	Since 01/1990					2003		2004				2005	
	Min.		Ave.	Max.		III	IV	I	II	III	IV	I	II
	Value	Date	Value	Date									
EU	-21	IV-92	1	21	I-95	-9	1	7	14	12	8	6	-4
Euro area	-22	IV-92	1	19	I-95	-9	2	6	13	13	7	7	-2
BE	-24	I-96	-4	20	IV-97	-14	0	-2	9	12	8	0	-18
CZ	-11	IV-01	10	27	I-04	7	23	27	2	20	24	18	0
DK	-23	I-99	6	37	III-94	-15	4	10	18	18	10	4	-3
DE	-31	I-02	0	22	II-04	-9	6	12	22	16	5	6	-4
EE	-14	IV-01	12	29	II-05	21	25	26	28	29	22	21	29
EL	-5	II-03	12	23	IV-97	13	8	8	12	3	6	3	1
ES	-8	II-93	5	14	I-04	9	6	14	11	10	5	7	13
FR	-45	III-93	-1	32	II-00	-15	-11	3	11	14	11	17	1
IE	-18	IV-01	3	28	III-95	-15	9	-2	12	-1	-8	-14	-5
IT	-34	IV-91	3	28	IV-94	-12	4	-4	2	5	8	2	-5
CY	-42	II-03	-17	-5	II-04	-18	-11	-9	-5	-16	-17	-20	-9
LV	7	IV-01	13	22	IV-03	19	22	19	20	10	15	13	12
LT	-10	II-02	7	22	II-04	-4	13	17	22	12	17	-4	3
LU	-48	I-93	-7	32	I-00	-6	-3	-6	21	19	3	-8	-23
HU	-21	II-05	-1	23	III-00	-7	-11	-1	5	-3	-10	-10	-21
NL	-12	II-03	7	19	IV-99	-6	2	7	9	12	3	4	3
AT	-30	II-96	2	28	II-00	-3	8	14	13	12	17	10	0
PL	-17	III-02	15	45	I-98	-9	11	22	29	22	13	16	-6
PT	-37	III-93	-7	23	IV-94	-19	-19	-11	-15	3	-2	-6	-17
SI	-9	IV-01	5	17	IV-04	0	10	7	15	11	17	8	6
SK	7	I-05	32	52	II-00	31	31	8	31	19	38	7	28
FI	-30	III-01	9	49	I-00	-12	20	9	28	24	35	18	-7
SE	-38	I-91	4	48	II-00	-13	2	14	31	27	18	14	1
UK	-46	II-91	-6	29	I-95	-17	-15	5	13	3	10	-7	-19

TABLE 2b (continued): Quarterly survey of manufacturing industry

Export volume expectations in manufacturing industry (s.a.)^{(a) (c)}

	Since 01/1990					2003		2004				2005	
	Min.		Ave.	Max.		III	IV	I	II	III	IV	I	II
	Value	Date	Value	Date									
EU	-11	IV-01	7	21	I-95	0	8	11	14	12	14	9	7
Euro area	-11	II-93	6	20	I-95	-1	8	9	15	13	15	9	7
BE	-26	I-96	-2	35	IV-97	-16	2	-1	12	14	12	-1	-20
CZ	0	IV-01	30	54	IV-97	16	28	16	15	28	39	20	17
DK	-2	IV-98	12	24	I-98	4	10	13	15	19	15	15	7
DE	-16	IV-92	5	17	I-95	-1	12	10	16	14	17	12	14
EE	2	IV-01	18	38	III-00	23	19	20	15	12	19	25	24
EL	6	III-03	23	41	IV-97	6	22	15	25	17	18	14	13
ES	-8	II-93	4	12	III-97	9	-2	3	8	7	5	3	10
FR	-34	III-93	5	29	I-95	-7	6	16	20	15	21	11	-2
IE	-33	IV-01	5	48	II-04	-1	-7	8	48	-13	12	-12	-18
IT	-3	II-92	13	27	IV-94	6	8	8	14	14	11	7	9
CY	-11	IV-04	18	38	IV-02	12	22	23	7	0	-11	16	32
LV	-2	IV-98	15	24	IV-00	15	16	11	15	11	18	16	18
LT	-11	II-94	12	36	III-97	14	23	7	28	18	21	13	20
LU	-58	III-91	-7	42	II-00	-1	-14	-5	18	8	0	-8	-20
HU	-3	IV-01	12	32	IV-00	3	9	15	16	12	11	5	4
NL	-11	III-03	8	22	III-00	-11	-1	4	12	7	7	4	5
AT	-8	IV-01	6	15	IV-03	3	15	10	8	8	10	11	13
PL	0	IV-01	15	25	III-04	12	18	21	22	25	22	10	17
PT	-24	III-93	6	30	IV-94	4	12	0	-12	-1	-3	-5	-7
SI	3	IV-95	23	40	IV-04	27	26	31	27	30	40	28	28
SK	-15	I-04	36	75	I-96	40	53	-15	49	0	35	22	40
FI	-21	I-03	17	44	II-02	13	15	17	10	42	23	24	13
SE	-21	IV-01	20	49	I-04	0	26	49	27	32	38	32	11
UK	-34	IV-01	1	30	III-95	-3	1	5	2	-4	-3	2	-2

(a) Data collected in January, April, July and October each year.

(b) Answers to the questions whether, taking into account the level of order-books or production, capacity is more than sufficient (+), sufficient (=) or less than sufficient (-). Thus, negative balances (capacity less than sufficient) indicate high levels of capacity utilisation, whereas positive balances (capacity more than sufficient) are associated with low levels of capacity utilisation.

(c) Balances: i.e., differences between the percentages of respondents giving positive and negative replies.

(n) not seasonally adjusted.

TABLE 2c: Capacity utilisation by industrial branch^(a) (s.a.)
Degree of capacity utilisation in %

		Since 01/1990						2003		2004				2005	
		Min.		Ave.	Max.		III	IV	I	II	III	IV	I	II	
		Value	Date	Value	Date	Value									Date
CONSUMER GOODS ^(b)	EU	78.0	III-02	80.6	85.9	II-90	78.2	78.4	79.0	79.2	79.0	78.9	78.2	78.6	
	Euro area	77.3	I-05	80.3	85.4	II-90	78.1	79.0	78.3	78.6	78.2	78.3	77.3	77.8	
INVESTMENT GOODS ^(b)	EU	75.7	IV-93	83.1	87.0	IV-00	81.9	82.3	83.2	83.0	84.4	84.0	83.7	83.4	
	Euro area	75.7	IV-93	83.8	88.1	IV-00	82.6	83.2	83.8	83.2	84.4	84.1	84.5	83.8	
INTERMEDIATE GOODS ^(b)	EU	77.2	III-93	82.1	85.9	I-90	80.1	81.0	80.1	81.2	82.0	82.6	82.6	80.5	
	Euro area	76.8	IV-93	82.2	86.4	I-90	80.6	81.4	80.3	81.1	81.7	82.7	82.4	80.4	
FOOD AND BEVERAGES	EU	76.5	IV-04	79.3	82.5	II-91	78.0	79.0	79.2	77.9	78.9	76.5	78.2	77.6	
	Euro area	76.5	I-94	78.4	81.8	II-91	77.0	78.9	78.5	78.0	77.6	76.8	77.5	77.2	
TEXTILES	EU	76.1	II-04	79.8	84.3	I-90	77.5	76.7	78.1	76.1	77.0	76.4	76.5	76.5	
	Euro area	75.4	III-93	79.6	84.7	I-90	77.8	76.8	77.7	75.5	76.4	76.2	76.6	76.6	
WOOD AND WOOD PRODUCTS	EU	76.3	II-92	81.2	84.5	II-95	78.3	80.7	81.1	80.2	81.7	81.7	81.7	80.8	
	Euro area	76.3	II-92	81.2	84.8	IV-90	77.7	80.5	80.7	79.3	80.6	81.2	81.0	79.9	
PRINTING AND PUBLISHING	EU	77.0	III-03	81.1	85.6	III-90	77.0	77.9	80.7	80.8	80.5	80.9	81.2	81.3	
	Euro area	77.2	III-03	81.4	86.1	III-90	77.2	78.7	81.5	81.2	80.1	80.4	81.4	80.5	
NON-METALLIC MINERAL PRODUCTS	EU	76.1	IV-93	80.4	84.2	II-90	79.9	80.4	78.4	80.1	81.5	81.6	81.1	79.1	
	Euro area	76.0	IV-93	80.6	85.2	II-90	79.7	80.5	79.1	79.1	81.2	81.3	80.2	79.2	
BASIC METALS	EU	73.0	III-93	82.9	89.3	IV-97	84.0	82.4	83.3	84.9	86.1	87.5	87.5	83.9	
	Euro area	72.8	I-93	83.1	89.2	IV-97	84.7	82.5	82.8	84.8	86.3	88.3	87.0	83.7	
METAL PRODUCTS	EU	73.9	IV-93	80.0	85.4	I-90	77.8	79.0	79.3	78.3	80.2	80.4	80.0	79.0	
	Euro area	73.0	IV-93	79.7	85.3	I-90	78.0	79.1	79.3	78.4	80.3	80.3	79.7	78.7	
MACHINERY AND EQUIPMENT	EU	76.4	IV-93	82.6	88.7	II-90	80.4	80.5	81.9	81.7	83.2	83.1	83.8	84.1	
	Euro area	75.3	IV-93	83.1	89.4	II-90	81.0	81.7	82.8	82.3	83.2	83.4	85.0	84.4	
MEDICAL AND OPTICAL INSTRUMENTS	EU	79.1	I-94	83.5	88.0	I-01	82.2	81.0	82.2	83.6	83.8	84.0	83.6	83.4	
	Euro area	79.5	I-93	83.9	89.3	I-01	82.6	81.1	82.2	83.2	84.4	84.0	84.7	84.4	
MOTOR VEH., TRAILERS AND SEMI-TRAILERS	EU	74.0	III-93	86.2	90.8	II-90	84.8	87.2	86.8	85.9	88.1	87.1	86.7	85.2	
	Euro area	74.8	III-93	87.4	92.6	I-01	87.3	88.4	86.5	85.7	87.4	86.8	87.3	85.7	

(a) Data collected in January, April, July and October each year.

(b) The three major groups do not cover all industrial sectors.

TABLE 2d: Export volume expectations by industrial branch^(a) (s.a.)

Balances: i.e., differences between the percentages of respondents giving positive and negative replies

		Since 01/1990						2003		2004				2005	
		Min.		Ave.	Max.		III	IV	I	II	III	IV	I	II	
		Value	Date	Value	Date	Value									Date
CONSUMER GOODS ^(b)	EU	-7	I-02	7	17	IV-00	-1	6	7	16	6	10	11	8	
	Euro area	-7	III-93	8	19	IV-00	0	5	7	16	6	12	9	6	
INVESTMENT GOODS ^(b)	EU	-19	IV-92	6	22	I-95	-2	12	12	20	16	20	9	8	
	Euro area	-23	IV-92	6	24	IV-04	0	14	11	21	21	24	10	11	
INTERMEDIATE GOODS ^(b)	EU	-14	IV-01	5	26	IV-94	0	9	11	13	12	11	8	5	
	Euro area	-13	IV-01	5	25	IV-94	-3	9	11	16	13	9	7	4	
FOOD AND BEVERAGES	EU	-2	I-02	9	21	III-94	2	4	6	14	5	4	10	6	
	Euro area	-4	IV-92	9	19	I-95	1	3	6	15	4	7	10	5	
TEXTILES	EU	-16	IV-01	2	17	III-94	-9	6	0	3	0	4	5	-4	
	Euro area	-17	II-93	3	18	III-97	-6	6	-2	3	-3	7	5	-4	
WOOD AND WOOD PRODUCTS	EU	-11	IV-90	4	21	IV-94	-2	2	6	17	10	0	0	1	
	Euro area	-10	II-03	3	18	II-94	-4	2	4	14	12	5	-1	0	
PRINTING AND PUBLISHING	EU	-10	III-94	1	16	I-95	4	-1	-2	9	4	4	5	-5	
	Euro area	-13	IV-93	3	19	I-91	1	0	3	6	7	9	1	1	
NON-METALLIC MINERAL PRODUCTS	EU	-14	IV-01	4	20	I-95	-2	7	-4	10	4	7	-1	4	
	Euro area	-10	II-93	4	19	I-95	-4	10	-4	8	2	4	4	7	
BASIC METALS	EU	-25	IV-01	2	27	III-94	-13	5	16	13	10	18	3	-6	
	Euro area	-25	IV-01	1	26	IV-94	-20	2	14	12	9	14	-1	-6	
METAL PRODUCTS	EU	-15	IV-01	3	20	I-95	-2	5	6	11	5	12	11	8	
	Euro area	-14	II-93	3	18	I-95	-4	1	4	9	3	12	13	8	
MACHINERY AND EQUIPMENT	EU	-16	IV-01	5	25	I-95	0	10	14	15	19	23	13	10	
	Euro area	-15	II-93	5	26	IV-94	0	8	11	14	17	20	14	11	
MEDICAL AND OPTICAL INSTRUMENTS	EU	-16	IV-01	11	26	III-95	3	20	14	17	16	23	22	25	
	Euro area	-20	II-93	10	27	IV-97	3	15	8	13	17	25	21	27	
MOTOR VEH., TRAILERS AND SEMI-TRAILERS	EU	-33	III-93	5	28	II-98	-3	7	14	23	18	16	-5	-2	
	Euro area	-38	III-93	6	36	II-98	1	12	14	30	31	28	0	6	

(a) Data collected in January, April, July and October each year.

(b) The three major groups do not cover all industrial sectors.

TABLE 3: Monthly survey of services (s.a.)^(a)

SERVICES CONFIDENCE INDICATOR		Since 01/1990						2004						2005					
		Min.		Ave.		Max.		May	June	July	Aug.	Sep.	Oct.	Nov.	Dec.	Jan.	Feb.	Mar.	Apr.
		Value	Date	Value	Date	Value	Date												
ASSESSMENT OF BUSINESS SITUATION	EU	-8	03-03	17	32	08-98	14	12	13	14	14	15	13	12	14	13	10	8	
	Euro area	-7	03-03	18	34	08-98	13	11	12	13	11	12	11	10	13	10	9	8	
	Component of the services confidence indicator	BE	-7	03-03	13	33	03-98	10	12	18	8	15	17	10	11	15	14	11	12
		CZ ⁽ⁿ⁾	30	01-05	40	52	07-02	45	45	45	43	40	38	39	35	30	38	36	39
		DK	11	10-01	25	37	04-04	32	29	28	28	30	34	33	37	34	33	34	33
		DE	-23	12-02	25	52	03-99	17	11	12	13	12	11	11	8	11	6	5	4
		EE ⁽ⁿ⁾	-6	12-04	22	43	05-04	43	31	26	20	14	13	-5	-6	-3	14	23	37
		EL	-14	04-03	27	62	08-00	26	24	24	16	7	13	11	6	20	18	23	22
		ES	10	10-04	31	56	06-98	26	22	16	16	17	10	13	16	15	12	14	17
		FR ^(b)	-22	06-93	3	25	06-90	3	6	10	9	9	12	10	11	11	9	8	5
		IE	-14	05-03	17	44	08-98	2	-7	7	4	-12	-4	-10	4	-2	-9	-4	9
		IT	-5	11-01	17	44	02-98	13	15	15	17	11	17	13	10	19	13	16	12
		CY ⁽ⁿ⁾	-16	02-03	4	25	10-04	14	11	8	9	22	25	12	7	4	8	13	16
		LV ⁽ⁿ⁾	2	12-03	11	19	06-03	17	13	12	12	12	6	5	4	10	13	14	17
		LT ⁽ⁿ⁾	5	11-04	17	40	04-03	23	15	14	14	23	20	5	15	14	8	20	23
		HU ⁽ⁿ⁾	-10	11-04	1	14	03-02	5	1	1	-3	-6	-9	-10	-7	-7	0	-5	-6
		NL	3	06-03	17	35	12-97	7	4	5	8	10	8	7	8	7	11	7	10
		AT	0	01-02	16	30	03-98	16	15	16	19	17	19	16	16	13	12	9	12
		PL ⁽ⁿ⁾	-8	03-03	0	8	02-05	1	4	-4	6	2	3	3	1	7	8	5	8
		PT	-17	05-03	8	29	06-01	6	3	5	7	4	4	12	0	-2	5	-3	-3
SI ⁽ⁿ⁾		12	03-05	25	34	10-02	26	27	21	25	21	23	23	20	20	22	12	15	
SK ⁽ⁿ⁾		27	03-05	49	61	11-02	51	38	40	48	56	50	56	50	29	40	27	39	
FI	-12	09-03	25	61	09-00	-3	-1	18	16	23	31	31	30	38	33	32	25		
SE	-24	01-03	16	46	12-00	24	29	28	26	30	38	29	23	35	30	32	31		
UK	-20	12-02	15	37	10-97	17	16	16	19	27	25	19	19	10	24	3	-1		
EVOLUTION OF DEMAND IN RECENT MONTHS	EU	-19	03-03	14	37	06-00	5	6	8	9	7	11	9	9	12	8	0	0	
	Euro area	-18	03-03	16	39	06-00	6	6	8	9	6	9	8	8	12	6	1	1	
	Component of the services confidence indicator	BE	-27	12-01	-3	28	01-98	-5	-3	3	-2	1	3	-2	-5	0	-5	-2	-6
		CZ ⁽ⁿ⁾	54	10-04	60	76	07-02	60	65	63	54	54	54	59	58	59	62	55	57
		DK	4	05-03	22	41	04-00	25	22	19	19	25	29	24	29	27	27	28	29
		DE	-35	01-03	26	63	12-98	15	8	13	16	12	11	11	8	10	5	-1	2
		EE ⁽ⁿ⁾	-6	11-04	26	52	06-04	52	52	39	27	14	17	-6	2	1	3	9	28
		EL	-42	04-03	11	58	09-00	29	29	21	15	7	16	11	0	19	22	28	26
		ES	4	10-04	31	67	04-00	16	14	10	11	9	4	8	10	9	6	5	8
		FR ^(b)	-35	09-96	-2	29	06-00	-1	4	10	11	11	14	14	16	13	9	5	1
		IE	-16	05-03	20	52	11-99	-1	-10	2	2	-11	-1	-15	11	-4	-10	-7	4
		IT	-27	10-02	13	44	02-01	-8	-1	0	-12	-17	-3	-11	-3	18	0	-15	-18
		CY ⁽ⁿ⁾	-37	03-03	-5	28	10-04	2	6	3	5	17	28	14	1	1	-5	-4	-3
		LV ⁽ⁿ⁾	0	03-04	11	23	07-03	10	10	12	12	12	3	4	1	9	6	7	8
		LT ⁽ⁿ⁾	6	07-03	22	58	04-03	21	9	15	18	20	21	7	12	19	9	7	14
		HU ⁽ⁿ⁾	-17	05-03	1	16	08-02	-1	-5	-4	-6	-12	-16	-10	-4	-6	-6	-10	-14
		NL	-26	07-93	12	70	12-00	5	8	1	14	8	8	9	8	18	19	13	13
		AT	-4	10-96	13	30	03-98	15	12	16	17	15	16	11	12	11	7	6	8
		PL ⁽ⁿ⁾	-12	02-04	3	9	11-03	-2	1	-2	5	3	3	3	3	6	6	0	3
		PT	-22	06-03	5	24	11-97	-2	-9	2	-2	-5	-7	0	-11	2	-5	-7	-10
SI ⁽ⁿ⁾		2	04-05	29	46	10-02	21	23	23	23	25	19	27	24	24	20	13	2	
SK ⁽ⁿ⁾		13	03-05	46	64	01-03	53	45	44	44	62	40	59	42	21	35	13	34	
FI	-47	03-03	19	79	05-98	-23	-22	-21	7	-7	20	44	28	17	27	27	24		
SE	-60	01-02	6	41	01-05	22	29	31	21	25	40	37	23	41	37	36	27		
UK	-35	12-02	0	27	12-97	-5	0	1	5	7	16	2	8	2	9	-21	-17		

TABLE 3: (continued) **Monthly survey of services (s.a.)^(a)**

		Since 01/1990						2004						2005					
		Min.		Ave.		Max.		May	June	July	Aug.	Sep.	Oct.	Nov.	Dec.	Jan.	Feb.	Mar.	Apr.
		Value	Date	Value	Date	Value	Date												
EVOLUTION	EU	-1	11-01	24	37	06-98	22	17	18	19	23	19	19	16	19	20	20	18	
OF DEMAND	Euro area	-6	11-01	23	38	05-00	20	15	16	17	20	17	17	14	18	18	19	17	
EXPECTED	BE	-2	07-03	28	51	01-95	31	32	29	24	36	28	28	28	34	33	24	30	
IN THE MONTHS	CZ⁽ⁿ⁾	2	01-04	32	51	05-02	41	35	33	36	35	32	30	19	6	24	30	36	
AHEAD	DK	16	09-01	30	41	12-04	37	33	34	35	36	35	36	41	37	35	35	33	
Component of the services confidence indicator	DE	-22	11-01	29	59	09-00	16	10	10	10	13	13	12	6	13	11	12	7	
	EE⁽ⁿ⁾	-17	12-04	19	60	04-03	27	0	4	15	15	6	-3	-17	-3	38	51	57	
	EL	5	05-03	38	75	09-01	29	23	34	24	11	15	18	16	23	14	13	15	
	ES	19	10-04	38	59	06-98	44	39	31	28	33	19	20	22	26	25	31	31	
	FR	-18	09-93	5	32	03-01	6	5	9	7	7	11	9	10	11	11	13	8	
	IE	-7	05-03	19	45	06-98	10	1	16	8	-4	-1	3	12	3	-2	6	19	
	IT	-6	09-00	25	57	06-01	33	23	22	33	35	32	35	20	26	32	47	40	
	CY⁽ⁿ⁾	-3	06-03	18	50	04-05	34	16	15	3	27	16	5	8	3	20	47	50	
	LV⁽ⁿ⁾	-5	12-02	15	35	02-02	24	15	10	10	9	8	8	5	12	24	33	31	
	LT⁽ⁿ⁾	-18	01-04	12	42	04-04	23	20	11	12	25	19	6	19	5	8	35	37	
	HU⁽ⁿ⁾	-14	12-04	5	24	03-02	12	8	7	5	5	-1	-10	-14	-8	8	9	13	
	NL	-4	01-96	26	54	07-00	23	14	22	26	36	19	22	20	20	28	6	30	
	AT	-1	10-01	19	34	06-98	19	17	19	20	17	21	17	17	11	12	10	17	
	PL⁽ⁿ⁾	-10	03-03	2	16	04-05	5	8	-7	7	3	3	4	1	9	14	14	16	
	PT	-16	09-03	15	40	06-01	20	13	7	14	13	9	23	18	-4	12	4	11	
	SI⁽ⁿ⁾	11	12-02	27	40	04-05	35	28	18	26	24	23	22	21	18	29	35	40	
	SK⁽ⁿ⁾	26	01-05	53	74	09-02	49	34	45	56	60	58	60	54	26	50	35	42	
	FI	-12	10-96	30	71	01-01	11	28	42	19	42	17	27	33	62	36	35	20	
	SE	-4	01-03	24	66	02-01	26	28	30	36	30	31	20	25	37	18	27	34	
	UK	-14	03-03	29	57	10-97	32	22	27	29	38	26	23	22	18	30	23	14	
EVOLUTION OF EMPLOYMENT	EU	-10	03-03	11	26	08-98	-2	-1	0	2	4	5	4	3	-1	2	0	2	
IN RECENT MONTHS	Euro area	-8	03-03	12	28	01-99	-2	-1	-1	2	3	3	3	2	-3	-1	0	1	
	BE	-14	08-02	8	30	08-98	4	2	2	-9	2	-1	0	-3	4	0	1	5	
	CZ⁽ⁿ⁾	-27	11-04	-10	21	11-02	-18	-10	-18	-24	-23	-21	-27	9	-9	-23	-26	-16	
	DK	-2	04-03	8	21	04-00	14	11	8	12	12	14	15	15	13	13	12	15	
	DE	-19	12-02	15	44	03-99	-4	-6	-3	-1	-2	-3	-2	-2	-6	-7	-5	-3	
	EE⁽ⁿ⁾	-3	11-04	8	21	07-04	12	20	21	20	8	6	-3	2	0	11	-3	11	
	EL	-42	06-01	8	45	06-00	12	13	23	19	14	4	-3	-15	-17	-8	-11	-3	
	ES	4	03-03	19	45	08-98	13	11	6	12	8	5	6	10	9	11	13	12	
	FR	-27	06-93	4	23	12-90	-9	-2	-4	2	8	9	6	3	3	-1	2	3	
	IE	-17	09-04	2	25	02-98	-10	-4	-7	-6	-17	-16	-13	-7	-12	-13	-14	-13	
	IT	-13	05-03	7	25	05-00	-3	3	6	-1	4	8	13	7	-11	5	1	-1	
	CY⁽ⁿ⁾	-26	06-02	-4	5	04-05	2	-6	0	-8	0	1	0	1	0	3	3	5	
	LV⁽ⁿ⁾	-4	03-03	4	15	06-03	9	8	11	10	8	4	5	2	5	1	4	8	
	LT⁽ⁿ⁾	-46	01-03	-12	20	08-04	-18	0	0	20	-2	6	-24	5	-21	-11	-12	-16	
	HU⁽ⁿ⁾	-16	02-03	-6	3	10-02	-1	1	3	-6	-6	-5	0	-1	-12	-8	-15	-9	
	NL	-8	05-03	17	66	06-98	1	-3	-1	2	0	-2	3	3	1	-1	-1	4	
	AT	-7	08-02	6	18	07-98	3	5	1	10	8	8	6	7	2	8	5	8	
	PL⁽ⁿ⁾	-15	02-04	-8	2	04-05	-10	-7	-10	-7	-12	-9	-8	-5	-3	2	-4	2	
	PT	-34	05-03	-1	28	07-98	-19	-12	-4	-6	-13	-19	-13	-24	-19	-18	-15	-15	
	SI⁽ⁿ⁾	-10	02-04	3	16	08-04	7	9	10	16	4	5	3	8	2	5	4	8	
	SK⁽ⁿ⁾	-66	12-04	-38	0	05-02	-56	-52	-54	-50	-47	-52	-59	-66	-40	-45	-46	-54	
	FI	-26	04-97	30	91	11-97	20	14	-9	45	49	17	9	14	1	25	22	-4	
	SE	-40	04-03	3	42	01-01	-15	-18	-3	-6	-6	-3	-8	-3	2	-2	4	8	
	UK	-22	04-03	9	27	05-00	1	3	5	1	11	22	11	14	5	18	0	4	
EVOLUTION OF EMPLOYMENT	EU	-6	03-03	10	26	06-98	5	7	5	5	5	5	5	5	3	4	4	5	
EXPECTED	Euro area	-5	04-03	9	25	04-00	4	5	2	3	1	1	3	2	1	1	2	4	
IN THE MONTHS	BE	-11	04-03	16	34	11-99	14	20	17	15	18	18	15	14	17	17	15	24	
AHEAD	CZ⁽ⁿ⁾	-34	12-02	-20	-2	06-02	-17	-27	-18	-29	-27	-29	-29	-18	-25	-13	-16	-15	
	DK	4	02-03	11	18	04-05	11	13	15	13	16	12	13	13	15	17	14	18	
	DE	-13	05-03	-4	11	02-01	-1	-1	-5	-3	-5	-3	-1	-4	-3	-3	-1	-3	
	EE⁽ⁿ⁾	-5	08-02	15	39	03-05	30	22	13	6	12	16	18	14	15	24	39	38	
	EL	-33	12-00	11	47	05-99	23	13	21	14	7	-4	-8	-12	-6	-14	-18	-5	
	ES	3	05-01	18	41	04-00	19	18	11	16	12	6	14	14	15	8	11	15	
	FR	-31	06-97	1	21	06-98	6	3	2	0	4	1	4	2	0	0	5	5	
	IE	-13	11-04	8	31	04-98	-2	-2	7	2	2	-11	-13	7	-2	-8	3	-10	
	IT	-8	04-03	11	34	06-00	0	10	2	4	-2	3	2	6	-3	-2	0	5	
	CY⁽ⁿ⁾	-5	11-02	4	25	05-02	3	2	2	2	3	-2	-2	-1	-1	2	1	12	
	LV⁽ⁿ⁾	-2	12-03	7	18	04-05	16	14	8	7	5	5	5	10	13	18	18		
	LT⁽ⁿ⁾	-42	12-02	-9	26	05-04	26	8	2	10	14	24	-12	-10	2	7	-5	15	
	HU⁽ⁿ⁾	-17	12-03	-1	12	05-04	12	6	-2	-1	-4	-4	-5	-11	-2	3	4	0	
	NL	-4	03-05	19	40	01-99	8	5	5	6	6	5	10	6	8	9	-4	10	
	AT	-6	01-04	9	27	09-98	8	8	9	12	11	7	8	6	8	5	3	7	
	PL⁽ⁿ⁾	-13	07-04	-8	0	04-05	-4	-6	-13	-2	-7	-5	-4	-8	-8	-2	-6	0	
	PT	-24	01-03	3	37	08-03	-15	-20	-2	-11	-21	-14	-9	-5	-10	-7	-6	-8	
	SI⁽ⁿ⁾	-11	10-03	7	24	04-05	12	13	10	21	3	7	5	11	17	23	22	24	
	SK⁽ⁿ⁾	-70	12-04	-44	-9	07-02	-58	-57	-53	-42	-52	-61	-65	-70	-34	-39	-34	-46	
	FI	-31	11-96	24	82	07-00	8	5	24	17	4	3	1	10	-12	24	11	3	
	SE	-35	11-01	11	62	09-00	-8	6	-3	-3	-7	9	0	3	8	2	11	11	
	UK	-17	12-02	18	33	06-98	16	20	23	23	28	29	15						

TABLE 4a: Consumer opinion on economic and financial conditions (s.a.)^{(a)(b)}

		Since 01/1990						2004						2005					
		Min.		Ave.		Max.		May	June	July	Aug.	Sep.	Oct.	Nov.	Dec.	Jan.	Feb.	Mar.	Apr.
		Value	Date	Value	Date	Value	Date												
CONSUMER CONFIDENCE INDICATOR	EU	-27	03-93	-11	2	12-00	-13	-12	-12	-12	-11	-11	-10	-10	-10	-10	-10	-11	
	Euro area	-29	07-93	-12	2	04-00	-15	-14	-14	-14	-13	-13	-13	-13	-13	-13	-13	-13	
	BE	-27	08-93	-6	17	12-00	-6	-1	-4	-2	-2	-2	-4	-4	-6	-3	-1	-4	
	CZ	-36	03-98	-16	1	04-01	-15	-13	-10	-10	-12	-11	-10	-5	-4	-5	-2	-6	
	DK	-11	10-90	6	17	02-95	10	11	11	11	13	11	13	14	14	16	17	14	
	DE	-28	10-93	-11	6	05-00	-18	-15	-17	-18	-15	-18	-17	-16	-12	-15	-18	-15	
	EE	-56	04-93	-24	0	03-03	-21	-18	-14	-14	-11	-11	-7	-11	-12	-10	-5	-8	
	EL	-44	07-03	-30	-6	04-00	-22	-23	-26	-28	-26	-25	-27	-28	-32	-32	-33	-35	
	ES	-37	10-92	-10	6	03-00	-9	-11	-11	-11	-13	-11	-10	-9	-9	-10	-10	-11	
	FR^(d)	-34	08-93	-18	4	01-01	-17	-18	-15	-13	-11	-11	-13	-13	-17	-14	-14	-17	
	IE	-31	03-93	-4	19	01-00	-6	-6	3	3	6	9	2	8	7	4	7	1	
	IT	-38	04-93	-13	2	06-01	-19	-19	-20	-20	-20	-18	-14	-16	-16	-18	-18	-16	
	CY	-43	07-04	-28	-14	06-01	-34	-41	-43	-40	-37	-35	-38	-41	-34	-36	-36	-38	
	LV	-45	02-93	-25	-7	09-01	-19	-16	-14	-13	-18	-19	-20	-19	-16	-12	-11	-14	
	LT	-33	05-01	-15	-1	04-05	-13	-8	-7	-7	-3	-2	-2	-3	-5	-4	-5	-1	
	LU⁽ⁿ⁾	-5	11-02	3	14	02-02	1	5	5	4	7	5	4	6	4	1	2	1	
	HU	-58	04-95	-29	0	08-02	-28	-24	-25	-26	-24	-24	-25	-23	-21	-21	-24	-28	
	NL	-19	07-93	4	31	03-00	-10	-6	-3	1	1	-3	-3	-8	-4	-4	-3	2	
	AT	-16	04-96	-1	11	07-00	-5	-2	-1	-2	-3	-1	-3	-3	1	-3	-2	0	
	PL	-41	05-01	-31	-18	04-05	-25	-23	-26	-21	-24	-24	-22	-19	-20	-19	-18	-18	
	PT^(e)	-49	03-03	-22	-1	07-91	-35	-31	-31	-32	-32	-34	-34	-36	-35	-34	-31	-30	
SI	-29	06-99	-19	-9	10-04	-19	-19	-18	-15	-17	-9	-14	-18	-20	-13	-15	-13		
SK	-50	08-99	-32	-10	04-05	-26	-22	-22	-22	-25	-25	-16	-12	-13	-13	-13	-10		
FI	6	11-01	15	23	02-00	14	15	12	17	15	14	14	16	13	16	17	14		
SE	-10	09-96	8	25	03-00	6	6	4	6	6	8	7	10	8	8	7	6		
UK	-28	10-92	-8	7	10-97	-5	-5	-3	-4	-3	-2	0	0	0	0	3	0		
FINANCIAL SITUATION OF HOUSEHOLDS OVER NEXT 12 MONTHS	EU	-10	12-93	-1	5	04-01	-2	-1	-2	-2	-1	-1	-1	0	0	0	0		
	Euro area	-11	07-93	-2	5	03-00	-4	-3	-4	-4	-3	-4	-4	-3	-3	-2	-3		
	BE	-9	12-93	2	13	08-00	5	7	5	6	5	8	5	6	5	7	6	4	
	CZ	-32	02-98	-10	2	05-02	-17	-16	-7	-10	-13	-9	-6	-4	-4	-3	-3	-6	
	DK	2	12-90	12	39	10-00	16	16	15	15	14	11	14	14	15	15	17	15	
	DE	-15	02-94	-5	4	05-00	-8	-7	-8	-8	-7	-8	-6	-5	-2	-3	-4	-4	
	EE	-38	04-93	-11	11	01-03	-18	-10	-7	-6	-3	-2	3	-2	-3	-2	3	1	
	EL	-31	08-92	-15	10	04-00	-8	-9	-11	-8	-8	-10	-14	-13	-17	-17	-19	-20	
	ES	-16	10-92	1	10	10-99	0	-1	-1	-1	-2	-1	-1	2	0	-1	-1	-2	
	FR^(d)	-12	12-95	-1	6	01-01	-1	-1	-2	-1	1	0	-2	-1	-3	-2	-1	-2	
	IE	-13	02-93	1	16	01-00	-1	-2	0	2	2	6	0	4	4	2	4	-1	
	IT	-15	04-93	-1	7	07-01	-3	-3	-4	-5	-4	-4	-3	-3	-4	-4	-4	-2	
	CY	-36	06-04	-14	0	05-01	-24	-36	-36	-32	-27	-24	-27	-29	-24	-27	-25	-30	
	LV	-29	09-93	-8	10	08-02	-6	-1	2	1	1	-2	-2	-3	2	3	5	4	
	LT	-10	05-01	-1	6	10-04	-4	3	2	2	6	6	6	4	2	3	4	6	
	LU⁽ⁿ⁾	2	04-05	6	12	06-02	4	4	6	5	5	5	6	6	5	5	8	2	
	HU	-63	04-95	-22	16	08-02	-17	-15	-14	-14	-12	-10	-12	-12	-7	-7	-10	-13	
	NL	-11	12-04	4	16	12-99	-1	-2	-2	1	-2	-5	-5	-11	-5	-5	-6	-2	
	AT	-18	04-96	-4	4	04-99	-5	-3	-3	-7	-4	-4	-9	-5	-1	-1	-2	-2	
	PL	-20	08-01	-11	-3	04-05	-12	-9	-13	-7	-7	-7	-6	-3	-5	-3	-3	-3	
	PT^(e)	-26	03-03	-7	11	01-92	-15	-13	-13	-16	-15	-15	-16	-17	-16	-18	-15	-15	
SI	-30	06-99	-11	-2	11-96	-8	-12	-12	-12	-10	-2	-7	-4	-7	-4	-6	-4		
SK	-44	08-99	-25	-8	04-05	-31	-24	-24	-24	-24	-23	-12	-10	-11	-8	-10	-8		
FI	-8	04-93	6	13	10-04	10	10	11	11	12	13	12	12	10	13	11	11		
SE	-13	09-96	7	18	07-02	11	12	12	11	13	14	13	16	15	12	16	12		
UK	-23	03-90	2	16	09-02	8	8	8	7	7	9	10	8	10	10	11	10		
GENERAL ECONOMIC SITUATION OVER NEXT 12 MONTHS	EU	-32	03-93	-12	1	04-00	-15	-14	-14	-14	-12	-12	-12	-12	-11	-10	-12		
	Euro area	-35	03-93	-13	4	04-00	-16	-14	-14	-14	-12	-13	-14	-13	-13	-13	-14		
	BE	-46	07-93	-11	20	06-00	-4	5	-2	4	3	-1	-3	-2	-5	-1	2	-5	
	CZ	-40	09-97	-12	8	10-95	-14	-12	-8	-7	-11	-9	-10	-2	2	2	2	0	
	DK	-23	02-99	-2	23	07-01	8	6	2	6	5	7	7	6	6	10	13	5	
	DE	-41	03-93	-16	6	02-99	-23	-18	-22	-24	-21	-23	-22	-20	-16	-19	-23	-21	
	EE	-38	04-93	-4	25	03-03	-8	-6	2	4	8	8	10	6	8	11	11	7	
	EL	-37	12-03	-16	17	01-00	-8	-11	-15	-16	-9	-11	-16	-15	-20	-21	-19	-24	
	ES	-38	10-92	-5	11	08-97	-2	-5	-2	-7	-6	-5	-6	-2	-2	-4	-5	-7	
	FR^(d)	-37	01-91	-17	5	01-01	-18	-17	-14	-11	-7	-11	-15	-14	-18	-15	-10	-17	
	IE	-33	12-02	-2	22	01-00	-10	-9	2	0	6	11	2	7	6	0	6	-3	
	IT	-40	04-93	-8	13	02-95	-17	-17	-18	-18	-16	-11	-6	-10	-11	-12	-12	-10	
	CY	-46	06-04	-22	-6	05-01	-33	-46	-45	-39	-33	-29	-35	-41	-32	-31	-33	-38	
	LV	-27	06-95	-7	11	05-03	-3	0	4	3	1	-2	-6	-4	-1	6	8	3	
	LT	-19	05-01	2	15	10-04	0	6	5	7	13	15	13	11	8	10	8	11	
	LU⁽ⁿ⁾	-27	02-03	-6	7	06-02	-8	-1	0	-4	1	-1	-4	-3	-2	-9	-4	-7	
	HU	-53	04-95	-15	19	08-02	-11	-9	-9	-12	-7	-8	-10	-8	-5	-5	-8	-13	
	NL	-42	03-93	-8	26	03-00	-12	-7	0	0	-3	-6	-9	-16	-13	-6	-4	4	
	AT	-26	04-96	-6	8	11-99	-4	-4	1	-5	-8	-6	-7	-8	-2	-6	-4	-4	
	PL	-35	05-01	-23	-5	04-05	-23	-21	-25	-16	-15	-17	-15	-10	-9	-7	-7	-5	
	PT^(e)	-52	03-03	-16	12	01-92	-28	-24	-25	-23	-23	-27	-27	-30	-29	-24	-18	-17	
SI	-21	02-04	-9	7	10-04	-5	-10	-13	-9	-9	7	-2	-3	-5	0	-4	4		
SK	-51	09-99	-32	-3	04-05	-27	-20	-20	-19	-24	-21	-12	-6	-8	-6	-3	-3		
FI	-24	04-91	6	28	01-95	4	6	6	9	6	5	4	6	3	5	8	4		
SE	-30	09-96	1	20	03-00	-2	-2	-3	2	1	3	3	3	0	1	-1	-3		
UK	-33	03-90	-9	14	06-97	-18	-18	-14	-16	-14	-12	-9</							

TABLE 4a (continued) : Consumer opinion on economic and financial conditions (s.a.) ^(a)

		Since 01/1990			2004								2005					
		Min.		Ave.	Max.		May	June	July	Aug.	Sep.	Oct.	Nov.	Dec.	Jan.	Feb.	Mar.	Apr.
		Value	Date	Value	Date													
SAVINGS	EU	-15	08-93	-5	4	04-01	-5	-5	-5	-4	-4	-4	-2	-3	-3	-4	-4	-4
OVER NEXT	Euro area	-14	08-93	-5	4	03-01	-9	-9	-9	-7	-7	-8	-5	-6	-7	-8	-9	-8
12 MONTHS	BE	-2	12-93	13	31	06-98	13	16	12	12	16	15	13	17	15	16	16	17
Component of the consumer confidence indicator	CZ	-16	03-98	-4	11	08-03	0	6	4	5	-1	-1	2	2	6	2	5	0
	DK	-3	01-90	22	39	04-05	27	27	31	29	36	36	35	36	37	37	38	39
	DE	-5	03-03	8	23	08-90	1	2	-2	2	2	1	3	4	5	5	0	2
	EE	-69	10-93	-51	-11	08-01	-47	-43	-40	-41	-40	-40	-36	-39	-37	-36	-28	-32
	EL	-57	07-95	-44	-23	01-00	-41	-37	-37	-37	-42	-37	-38	-44	-47	-47	-45	-48
	ES	-34	01-90	-19	0	07-00	-25	-27	-31	-25	-29	-25	-24	-23	-25	-24	-20	-23
	FR ^(d)	-36	03-96	-23	-7	04-04	-14	-14	-11	-10	-9	-8	-9	-12	-16	-15	-14	-18
	IE	-32	03-93	-2	28	02-02	14	10	16	18	19	21	15	19	21	20	21	19
	IT	-39	10-04	-16	2	03-91	-38	-38	-37	-38	-38	-39	-29	-32	-30	-35	-36	-29
	CY	-55	06-02	-41	-14	06-01	-39	-46	-50	-47	-42	-47	-47	-46	-39	-44	-38	-42
	LV	-90	03-96	-56	13	01-94	-52	-47	-50	-43	-59	-53	-54	-53	-52	-50	-50	-52
	LT	-56	05-01	-47	-34	04-05	-49	-45	-42	-46	-41	-41	-42	-39	-42	-40	-43	-34
	LU ⁽ⁿ⁾	40	07-03	47	58	04-02	47	48	46	45	52	47	51	54	46	49	45	47
	HU	-70	11-95	-53	-19	01-00	-50	-45	-47	-46	-45	-46	-47	-45	-45	-45	-44	-47
	NL	22	03-05	38	55	10-99	29	30	32	32	32	29	28	26	32	24	22	25
	AT	-11	11-00	32	55	03-02	28	31	27	30	30	30	35	31	33	27	27	29
	PL	-69	09-03	-51	-24	09-01	-48	-47	-48	-45	-60	-53	-50	-52	-53	-51	-49	-50
	PT ^(e)	-51	02-05	-34	-14	01-92	-45	-46	-47	-48	-46	-50	-50	-50	-50	-51	-51	-49
	SI	-52	06-99	-29	-15	06-03	-30	-27	-23	-20	-23	-24	-25	-26	-25	-25	-18	-22
	SK	-70	08-01	-42	-29	08-00	-44	-41	-42	-35	-44	-46	-38	-35	-36	-37	-41	-34
FI	19	01-96	37	53	05-04	53	53	46	53	53	48	52	52	46	50	51	49	
SE	11	06-98	29	46	06-00	32	30	28	27	29	31	30	31	28	30	33	29	
UK	-26	10-92	-6	17	03-05	12	8	12	13	15	14	17	14	15	14	17	17	
UNEMPLOYMENT	EU	-2	12-00	26	56	03-93	30	28	28	27	26	26	26	26	25	26	27	26
OVER NEXT	Euro area	-3	01-01	28	60	08-93	33	31	30	30	28	29	29	28	30	31	29	
12 MONTHS	BE	-19	12-00	27	63	10-93	39	30	31	29	30	31	31	35	37	33	30	32
Component of the consumer confidence indicator	CZ	4	05-01	36	64	03-99	30	32	30	28	23	24	24	17	21	19	14	18
	DK	-19	11-97	8	38	12-92	10	5	5	7	5	10	5	2	2	-2	-1	3
	DE	-3	01-01	30	58	10-93	41	37	37	40	36	41	42	41	34	43	44	37
	EE	6	03-05	35	82	10-92	11	13	11	12	9	11	7	9	14	14	6	6
	EL	24	04-90	44	62	12-98	30	34	44	50	43	42	42	40	43	43	47	47
	ES	-8	03-00	18	67	01-93	10	12	10	11	15	15	9	12	8	10	12	11
	FR ^(d)	-14	01-01	31	64	03-03	36	39	35	32	29	26	25	26	32	25	32	32
	IE	-29	12-99	15	58	04-92	24	23	5	8	4	2	8	-1	4	7	4	11
	IT	-2	06-01	27	70	04-93	18	19	20	18	20	16	18	20	19	21	22	22
	CY	25	10-03	35	49	12-04	39	35	43	44	44	39	44	49	41	42	46	43
	LV	6	02-05	28	54	01-93	17	14	13	11	15	19	17	14	13	6	7	12
	LT	-15	11-04	12	47	05-01	0	-6	-6	-7	-10	-13	-15	-11	-12	-14	-11	-13
	LU ⁽ⁿ⁾	14	06-02	34	48	12-03	41	29	31	30	30	32	37	35	34	42	42	37
	HU	-3	07-98	27	59	02-93	31	29	31	31	32	32	30	27	26	27	33	36
	NL	-35	07-98	18	77	03-93	57	46	41	29	23	31	26	32	28	28	25	19
	AT	-9	11-00	26	49	12-96	38	32	30	27	30	26	31	28	27	32	29	24
	PL	11	01-05	39	65	05-01	16	15	19	15	15	19	17	11	11	15	14	14
	PT ^(e)	-10	08-97	32	73	10-93	52	41	40	42	42	44	46	46	46	43	40	40
	SI	7	09-01	25	43	02-04	32	27	25	21	26	17	21	38	40	24	31	28
	SK	-4	01-05	28	68	08-99	1	2	3	12	9	9	4	-2	-4	-1	-1	-3
FI	-31	01-95	-1	42	07-91	12	11	13	4	13	11	10	5	7	3	3	7	
SE	-26	03-00	7	39	11-01	18	18	22	17	19	16	17	11	10	10	18	13	
UK	-11	04-98	21	53	02-91	21	20	20	21	21	19	18	15	16	17	16	21	
FINANCIAL	EU	-19	01-94	-10	-2	05-00	-13	-12	-13	-11	-12	-11	-11	-11	-11	-11	-11	
SITUATION	Euro area	-20	02-03	-10	-1	05-90	-16	-15	-16	-14	-14	-13	-14	-14	-14	-14	-14	
OF HOUSEHOLDS	BE	-16	12-93	-5	4	11-00	-4	-3	-7	-4	-5	-7	-3	-4	-5	-4	-5	
OVER LAST	CZ	-30	02-98	-15	-5	05-96	-17	-19	-14	-16	-17	-17	-16	-13	-13	-10	-10	
12 MONTHS	DK	-5	04-01	6	16	02-05	9	11	12	13	12	11	12	14	13	16	14	
	DE	-31	12-02	-12	4	05-90	-19	-16	-19	-14	-12	-13	-12	-12	-11	-11	-12	
	EE	-54	04-93	-18	3	03-05	-7	-7	-8	-8	-8	-6	-2	-4	-1	-1	3	
	EL	-43	01-93	-28	-6	04-00	-27	-27	-26	-26	-23	-25	-27	-30	-30	-29	-28	
	ES	-28	01-94	-8	4	04-00	-9	-9	-9	-10	-11	-8	-8	-7	-8	-9	-10	
	FR ^(d)	-18	06-96	-9	-2	01-01	-11	-11	-11	-11	-12	-9	-10	-11	-12	-11	-13	
	IE	-25	02-93	-7	11	04-00	-7	-10	-5	-5	-6	-4	-6	-2	-1	-2	0	
	IT	-30	02-04	-14	-1	05-90	-22	-24	-23	-24	-22	-21	-25	-25	-24	-23	-23	
	CY	-34	07-04	-16	-6	07-03	-22	-31	-34	-28	-27	-25	-27	-26	-24	-25	-29	
	LV	-57	01-93	-23	-4	08-02	-10	-12	-7	-8	-10	-10	-11	-14	-8	-7	-5	
	LT	-29	06-01	-15	-1	10-04	-8	-8	-7	-7	-7	-1	-5	-4	-4	-2	-3	
	LU ⁽ⁿ⁾	-1	11-03	2	9	01-02	0	-1	0	0	-1	0	2	3	2	0	0	
	HU	-65	11-95	-36	0	08-02	-26	-26	-28	-27	-27	-28	-24	-26	-25	-26	-26	
	NL	-25	03-05	1	17	02-00	-17	-15	-16	-16	-20	-19	-20	-21	-21	-23	-23	
	AT	-23	11-02	-13	-2	08-99	-19	-22	-20	-18	-20	-18	-18	-20	-18	-17	-16	
	PL	-34	05-01	-26	-15	04-05	-20	-21	-23	-16	-21	-19	-18	-18	-16	-17	-15	
	PT ^(e)	-29	04-03	-13	3	01-92	-21	-20	-19	-20	-19	-19	-19	-20	-21	-21	-19	
	SI	-36	06-99	-27	-17	04-05	-22	-25	-27	-25	-22	-24	-27	-25	-17	-19	-17	
	SK	-43	10-99	-29	-16	03-05	-30	-27	-29	-30	-30	-28	-23	-20	-21	-17	-16	
	FI	-22	04-93	0	9	04-05	5	6	7	7	6	6	6	8	7	6		

TABLE 4a (continued) : Consumer opinion on economic and financial conditions (s.a.) ^(a)

		Since 01/1990			2004								2005					
		Min.		Ave.	Max.		May	June	July	Aug.	Sep.	Oct.	Nov.	Dec.	Jan.	Feb.	Mar.	Apr.
		Value	Date	Value	Date													
GENERAL	EU	-55	03-93	-27	-4	05-00	-35	-34	-32	-31	-31	-30	-32	-30	-29	-28	-29	-30
ECONOMIC	Euro area	-58	07-93	-28	-2	05-00	-40	-38	-37	-35	-34	-34	-36	-34	-34	-33	-34	-36
SITUATION	BE	-61	08-93	-25	22	12-00	-24	-18	-23	-15	-19	-21	-19	-19	-20	-14	-11	-17
OVER LAST	CZ	-54	12-97	-22	3	10-95	-25	-23	-27	-20	-23	-22	-19	-17	-11	-11	-7	-10
12 MONTHS	DK	-25	04-93	-1	22	09-95	9	7	9	8	9	9	10	15	14	16	19	16
	DE	-60	05-03	-27	12	01-90	-44	-40	-42	-40	-39	-40	-41	-37	-33	-34	-39	-40
	EE	-72	10-92	-12	20	01-03	9	1	3	4	6	8	8	7	11	7	12	5
	EL	-50	05-90	-31	6	05-00	-32	-32	-30	-26	-22	-25	-30	-31	-33	-33	-30	-30
	ES	-61	08-93	-16	13	03-00	-13	-16	-15	-18	-16	-16	-16	-12	-13	-15	-16	-18
	FR ^(d)	-57	10-96	-35	-1	01-01	-44	-44	-40	-38	-36	-34	-36	-36	-39	-37	-37	-40
	IE	-59	03-93	-5	42	08-99	-20	-19	-3	-8	-1	2	-2	5	7	4	7	-1
	IT	-74	04-93	-38	-8	05-90	-53	-51	-51	-48	-46	-44	-50	-48	-48	-46	-47	-51
	CY	-41	07-04	-26	-12	01-02	-32	-37	-41	-34	-31	-35	-35	-39	-32	-31	-32	-39
	LV	-59	01-93	-25	3	05-03	-4	-5	-3	-2	-11	-12	-14	-16	-11	-6	-7	-11
	LT	-41	05-01	-12	5	10-04	-1	0	1	0	3	5	3	3	2	4	2	5
	LU ⁽ⁿ⁾	-36	12-03	-23	-5	06-02	-27	-23	-21	-22	-22	-17	-17	-21	-15	-24	-20	-24
	HU	-71	04-95	-32	6	09-02	-28	-25	-24	-26	-25	-26	-26	-26	-22	-24	-22	-28
	NL	-73	03-03	-12	45	03-00	-50	-45	-40	-39	-37	-40	-41	-45	-44	-40	-35	-30
	AT	-50	02-97	-24	8	07-00	-31	-29	-25	-27	-28	-24	-22	-28	-22	-28	-25	-22
	PL	-55	09-01	-42	-17	04-05	-38	-37	-37	-32	-34	-31	-30	-24	-22	-21	-19	-17
	PT ^(e)	-60	03-03	-24	13	10-91	-49	-47	-43	-43	-42	-43	-45	-50	-51	-51	-49	-46
	SI	-39	09-98	-29	-14	04-05	-22	-26	-29	-26	-26	-19	-25	-29	-26	-19	-22	-14
	SK	-69	10-99	-43	-11	03-05	-33	-31	-31	-29	-33	-31	-27	-19	-22	-16	-11	-12
	FI	-65	01-92	-4	30	08-98	1	3	3	7	4	5	5	6	4	7	7	2
	SE	-25	04-03	-6	25	03-00	-11	-10	-9	-5	-8	-4	-1	-2	1	-2	-4	-6
	UK	-67	11-92	-25	5	10-97	-19	-22	-17	-21	-21	-22	-21	-18	-17	-14	-13	-13
SAVINGS	EU	:	:	:	:	:	:	:	:	:	:	:	:	:	:	:	:	:
AT PRESENT ^(c)	Euro area	:	:	:	:	:	:	:	:	:	:	:	:	:	:	:	:	:
	BE	-45	12-03	45	70	02-01	-22	-18	-20	-20	-21	-22	-26	-25	-27	-24	-29	-28
	CZ	-35	01-03	-15	15	03-01	-15	-15	-13	-16	-16	-17	-20	-21	-19	-19	-18	-20
	DK	51	01-90	65	78	07-92	69	71	68	67	72	74	75	74	73	68	71	69
	DE	29	11-92	45	61	09-02	47	48	47	41	44	43	46	46	45	45	42	44
	EE	-58	09-96	-37	-14	08-01	-36	-36	-28	-35	-24	-29	-24	-29	-29	-27	-23	-23
	EL	-64	10-01	-46	-18	01-00	-56	-54	-57	-56	-61	-54	-54	-58	-61	-64	-61	-60
	ES	-33	12-03	29	59	08-96	-21	-25	-29	-25	-29	-24	-20	-27	-20	-18	-19	-20
	FR ^(d)	8	11-04	43	61	06-95	13	13	13	13	12	12	8	10	15	14	15	17
	IE	-2	03-93	20	56	12-01	21	20	22	25	32	28	27	39	38	35	44	38
	IT	26	06-04	45	59	06-96	28	26	29	34	42	35	38	40	40	46	47	46
	CY	-38	07-04	-13	9	09-01	-23	-33	-38	-18	-22	-26	-22	-12	-8	-3	9	-6
	LV	-78	12-95	-58	-29	09-01	-51	-50	-50	-47	-58	-51	-52	-54	-50	-50	-49	-53
	LT	-48	05-01	-37	-28	05-02	-45	-39	-36	-39	-35	-34	-38	-35	-36	-40	-39	-40
	LU ⁽ⁿ⁾	42	08-03	53	62	01-03	55	57	53	52	58	56	52	58	53	59	57	57
	HU	-83	11-95	-65	-28	12-00	-53	-47	-53	-52	-51	-52	-53	-58	-54	-51	-54	-52
	NL	47	06-91	61	70	09-96	65	64	66	68	65	64	68	70	64	61	62	63
	AT	17	12-96	41	64	09-02	54	55	54	56	55	55	55	56	57	52	51	52
	PL	-49	09-01	-38	-29	06-01	-37	-33	-35	-35	-36	-40	-34	-31	-38	-35	-30	-33
	PT ^(e)	-63	02-05	-39	-13	01-92	-59	-58	-56	-60	-58	-61	-62	-63	-61	-63	-62	-63
	SI	-25	09-97	-13	-1	08-04	-3	-7	-2	-1	-6	-6	-2	-4	-7	-9	-5	-3
	SK	-55	10-04	-46	-36	03-00	-50	-50	-51	-51	-53	-55	-49	-49	-50	-50	-46	-47
	FI	-23	04-94	3	22	10-92	13	13	11	11	13	14	14	16	14	15	16	18
	SE	-9	09-01	6	20	01-00	-2	-1	1	0	-1	0	1	3	-2	-1	-1	1
	UK	-16	03-03	11	36	05-90	11	19	21	24	22	25	23	22	25	24	28	28
MAJOR	EU	-21	07-93	-16	-10	03-00	-17	-18	-19	-18	-18	-18	-18	-17	-17	-17	-17	-16
PURCHASES	Euro area	-21	07-93	-17	-12	03-00	-19	-20	-20	-19	-19	-19	-20	-19	-18	-18	-18	-18
OVER NEXT	BE	-29	10-96	-16	-6	10-03	-10	-10	-11	-11	-14	-10	-16	-17	-14	-14	-14	-16
12 MONTHS	CZ	-36	01-01	-24	-7	05-02	-11	-24	-13	-17	-18	-16	-15	-10	-14	-11	-17	-8
	DK	-14	01-93	-7	1	11-04	-1	-2	-2	-2	-1	1	-2	0	0	0	1	
	DE	-39	02-03	-26	-14	01-90	-32	-34	-35	-33	-33	-33	-33	-30	-30	-30	-29	-31
	EE	-64	10-92	-26	-5	04-03	-20	-17	-18	-22	-24	-16	-13	-9	-10	-12	-15	-11
	EL	-50	11-92	-23	5	06-03	-30	-33	-37	-33	-22	-24	-23	-26	-23	-21	-21	-21
	ES	-48	11-93	-24	-7	11-00	-21	-26	-20	-20	-25	-20	-26	-25	-23	-26	-23	-20
	FR ^(d)	-6	04-04	0	1	09-99	-3	-4	-5	-5	-5	-4	-5	-5	-3	-4	-5	-4
	IE	-20	05-93	-9	2	12-00	-6	-5	-4	-6	-6	-7	-4	-6	-6	-4	-3	-6
	IT	-23	10-92	-17	-9	04-05	-14	-13	-15	-13	-13	-14	-13	-12	-13	-9	-11	-9
	CY	-7	03-04	13	35	03-03	-4	8	13	16	14	15	17	17	7	7	-4	2
	LV	-84	03-96	-44	6	03-05	-10	-10	-5	-4	-4	-4	-7	0	2	-1	6	1
	LT	-19	12-02	-11	-1	11-04	-6	-4	-2	-2	-3	-5	-1	-4	-6	-9	-5	-6
	LU ⁽ⁿ⁾	-19	08-03	-12	-5	01-02	-12	-15	-14	-11	-16	-16	-12	-13	-10	-11	-10	-11
	HU	-69	06-95	-38	-8	08-02	-27	-26	-27	-27	-25	-25	-22	-26	-23	-22	-22	-24
	NL	-25	03-03	-13	-4	11-98	-17	-20	-15	-20	-17	-18	-18	-18	-17	-17	-20	-17
	AT	-26	11-04	-16	-4	11-00	-21	-22	-24	-19	-19	-22	-26	-21	-22	-22	-19	-21
	PL	-25	09-01	-8	1	09-04	-7	-3	-6	-5	1	-2	-1	-4	-3	-6	-7	-7
	PT ^(e)	-23	11-95	-8	14	06-90	-12	-11	-11	-10	-11	-13	-12	-11	-9	-14	-15	-13
	SI	-18	03-02	-5	4	04-00	-3	-3	-4	-8	-8	-3	-9	-4	-2	-2	-4	-2
	SK	-41	08-01	-29	-													

TABLE 4a (continued) : Consumer opinion on economic and financial conditions (s.a.)^(a)

		Since 01/1990						2004						2005					
		Min.		Ave.		Max.		May	June	July	Aug.	Sep.	Oct.	Nov.	Dec.	Jan.	Feb.	Mar.	Apr.
		Value	Date	Value	Date	Value	Date												
MAJOR PURCHASES AT PRESENT	EU	-22	07-93	-11	6	01-00	-16	-16	-16	-16	-16	-15	-15	-15	-13	-12	-12	-13	
	Euro area	-28	03-03	-14	6	03-99	-23	-22	-23	-22	-21	-21	-22	-23	-20	-19	-19	-21	
	BE	-40	06-97	-5	26	12-00	11	13	10	10	14	16	17	20	18	19	19	20	
	CZ	-33	05-95	-1	34	07-03	8	9	15	10	8	11	4	9	9	14	13	24	
	DK	-27	01-93	-7	10	09-97	-7	-9	-1	0	-9	-3	-3	0	0	-5	1	-7	
	DE	-31	11-02	-11	6	04-99	-21	-16	-22	-19	-18	-19	-20	-19	-15	-14	-13	-18	
	EE	0	04-01	13	48	04-04	29	26	27	24	26	30	31	39	36	37	36	38	
	EL	-67	01-03	-35	-10	01-01	-44	-46	-44	-49	-38	-41	-45	-49	-46	-45	-37	-44	
	ES	-64	06-93	-17	26	11-99	-20	-25	-29	-27	-28	-31	-27	-30	-20	-22	-19	-22	
	FR^(d)	-39	12-95	-14	14	07-00	-15	-15	-10	-11	-12	-9	-11	-13	-14	-9	-11	-9	
	IE	-22	04-92	14	40	09-97	12	9	16	19	19	18	20	19	26	21	28	22	
	IT	-64	11-96	-33	-2	05-90	-49	-52	-50	-50	-50	-47	-48	-51	-49	-53	-51	-53	
	CY	-19	10-01	1	25	11-04	6	-12	9	1	13	11	25	10	5	-3	-9	-5	
	LV	-81	06-96	-44	9	09-01	0	1	4	3	-6	-1	-2	-5	4	0	-2	1	
	LT	-9	05-01	17	41	04-04	35	31	33	31	35	31	33	34	30	32	38	34	
	LU⁽ⁿ⁾	-19	05-03	-9	1	08-04	-12	-18	-1	1	-1	-12	-11	-6	0	-9	-4	-10	
	HU	-87	06-96	-57	-9	10-02	-22	-18	-17	-16	-17	-16	-23	-24	-17	-16	-17	-15	
	NL	-39	04-03	7	54	02-00	-33	-30	-26	-25	-25	-30	-30	-33	-24	-28	-26	-26	
	AT	-14	07-02	8	29	08-99	-7	-9	-8	-7	-9	-10	-6	-3	-6	-7	-6	-5	
	PL	-27	11-01	-11	3	03-04	-13	-6	-8	-7	-12	-9	-9	-7	-3	-8	-5	-3	
PT^(e)	-58	12-04	-32	-2	01-92	-53	-55	-57	-56	-57	-56	-58	-58	-56	-58	-57	-58		
SI	-50	04-97	-23	10	05-99	-10	-8	-7	-4	-1	-3	-8	-11	-6	-9	-8	-5		
SK	-25	02-04	-10	4	08-99	-21	-21	-23	-15	-20	-18	-14	-15	-13	-13	-15	-15		
FI	-27	04-90	17	39	08-03	29	32	31	30	28	23	25	21	27	27	26	24		
SE	2	11-95	18	33	04-04	26	29	20	20	24	25	24	26	28	29	30	29		
UK	-22	05-90	8	28	11-02	11	5	8	5	3	5	7	13	8	14	12	12		
PRICE TRENDS OVER NEXT 12 MONTHS	EU	6	06-03	23	49	01-91	12	13	11	12	10	10	7	8	9	8	9		
	Euro area	3	04-04	23	51	01-91	10	10	8	9	8	7	8	6	8	9	9	10	
	BE	-4	09-02	20	46	10-01	15	14	17	12	15	19	18	12	13	14	15	20	
	CZ	14	04-05	46	72	03-98	44	37	35	38	34	35	36	29	17	15	18	14	
	DK	-29	08-93	-11	28	08-02	-12	-8	-5	-5	-8	-2	-7	-2	-8	-19	-15	-9	
	DE	5	12-04	32	58	03-91	14	13	14	13	12	11	7	5	8	8	9	9	
	EE	23	04-93	48	88	05-04	88	71	58	51	51	41	47	56	56	53	51	56	
	EL	0	03-04	38	60	05-90	18	13	16	13	10	23	24	15	17	18	19	17	
	ES	-4	11-98	14	36	01-02	13	15	12	17	17	22	18	19	21	16	18	23	
	FR^(d)	-13	08-97	11	54	01-91	18	19	13	10	8	4	12	8	10	15	13	11	
	IE	6	01-94	22	42	10-00	19	26	21	22	20	19	22	11	20	20	15	21	
	IT	-23	12-04	22	62	02-91	-20	-15	-15	-11	-17	-20	-20	-23	-17	-12	-12	-9	
	CY	28	09-03	48	69	09-02	42	51	42	42	43	44	43	48	39	38	37	46	
	LV	16	03-00	32	70	03-04	64	56	50	46	46	45	44	46	41	40	38	44	
	LT	14	02-03	42	77	05-04	77	67	66	63	57	54	59	59	55	53	51	48	
	LU⁽ⁿ⁾	-5	06-03	13	30	03-03	15	11	9	16	16	21	19	19	11	20	19	17	
	HU	34	07-98	51	65	05-95	57	53	54	52	53	51	50	51	49	46	46	49	
	NL	-28	12-02	24	60	01-91	3	3	4	1	4	7	10	14	9	12	16	4	
	AT	-19	12-95	14	41	09-01	21	19	20	25	24	27	31	21	26	23	21	26	
	PL	6	04-05	33	56	05-04	56	49	48	39	36	34	31	27	24	17	16	6	
PT^(e)	-9	08-97	32	56	03-03	40	30	30	34	36	40	37	38	36	36	37	36		
SI	16	01-05	42	62	04-00	22	31	27	24	20	19	24	22	16	20	19	19		
SK	23	03-05	52	78	11-02	61	47	47	46	41	40	29	28	27	28	23	26		
FI	-21	12-95	10	40	09-01	16	18	17	22	15	16	13	13	20	19	21	24		
SE	-14	03-05	13	34	04-03	22	19	19	18	20	19	15	6	8	9	-14	3		
UK	5	03-05	27	57	09-90	16	19	15	20	18	14	14	10	5	6	5	7		
PRICE TRENDS OVER LAST 12 MONTHS	EU	-4	03-99	23	46	01-03	32	31	30	29	29	27	30	28	28	29	28	29	
	Euro area	-4	01-99	27	62	01-03	42	40	40	38	37	35	38	37	37	38	38	39	
	BE	-1	06-98	34	56	04-05	46	47	50	47	48	51	54	52	54	55	53	56	
	CZ	-33	08-03	26	63	03-98	-12	-13	-10	-9	-7	-3	-11	-13	-15	-17	-16	-17	
	DK	-51	09-93	-25	-1	02-90	-30	-29	-31	-31	-33	-29	-33	-29	-30	-35	-33	-28	
	DE	-3	03-99	31	74	08-02	29	28	29	25	27	25	25	23	20	23	22	25	
	EE	-1	04-03	33	52	09-96	39	43	46	49	49	44	52	51	52	48	52	52	
	EL	5	06-99	40	76	08-03	69	67	70	73	62	64	69	68	67	67	66	61	
	ES	-5	06-97	30	65	03-03	54	55	52	52	53	53	54	52	51	52	53	52	
	FR^(d)	-23	01-99	12	54	01-04	47	46	50	46	42	39	45	46	47	49	51	49	
	IE	-3	07-97	29	66	12-02	41	48	40	46	45	46	51	40	45	42	40	42	
	IT	0	05-97	36	70	11-03	54	49	43	46	39	34	45	43	45	43	41	43	
	CY	21	05-01	41	62	10-04	49	45	53	62	60	62	55	62	52	48	42	51	
	LV	-31	09-96	22	55	04-05	46	44	43	46	50	53	51	49	51	51	54	55	
	LT	-17	10-03	7	31	12-04	6	19	24	28	27	27	30	31	27	28	26	26	
	LU⁽ⁿ⁾	20	01-02	38	45	01-04	39	39	36	39	39	43	36	40	40	38	42	40	
	HU	9	12-02	42	71	06-95	32	28	30	28	29	27	26	25	19	20	20	23	
	NL	-3	04-90	28	89	12-02	37	34	33	35	33	27	27	33	34	33	31	33	
	AT	-48	02-96	5	46	01-03	44	36	36	36	36	35	42	36	39	35	39	42	
	PL	-6	05-03	18	48	10-04	26	32	45	46	48	48	46	42	40	36	33	25	
PT^(e)	-6	08-97	37	61	10-90	50	44	39	42	42	44	43	46	43	42	41	42		
SI	14	01-05	43	65	06-02	29	37	32	29	23	24	28	31	14	14	19	21		
SK	14	04-05	44	69	10-99	34	38	39	39	43	37	34	32	24	17	14	14		
FI	-59	11-95	-15	3	04-02	-													

TABLE 4b: Quarterly survey of consumers

Intention to buy a car within the next 12 months (s.a.)^{(a)(b)}

	Since 01/1990					2003		2004				2005	
	Min.		Ave.	Max.		III	IV	I	II	III	IV	I	II
	Value	Date		Value	Date								
EU^(d)	-73	II-04	-55.7	-46	II-00	-70	-70	-73	-73	-71	-70	-73	-71
Euro area^(d)	-75	I-05	-57.0	-48	I-00	-72	-73	-75	-74	-73	-73	-75	-72
BE	-81	I-05	-57	-45	II-95	-76	-79	-78	-80	-80	-79	-81	-79
CZ	-80	II-05	-73	-66	I-03	-73	-69	-79	-79	-77	-77	-74	-80
DK	-79	I-90	-64	-43	I-97	-76	-74	-76	-68	-69	-71	-75	-72
DE	-78	II-04	-42	-28	II-90	-69	-71	-76	-78	-74	-75	-77	-72
EE	-86	IV-04	-71	-53	II-03	-76	-77	-79	-81	-82	-86	-83	-85
EL	-88	III-93	-65	-38	II-00	-61	-65	-67	-70	-70	-67	-68	-65
ES	-82	I-02	-68	-25	III-99	-78	-79	-82	-76	-76	-73	-78	-74
FR^(e)	-83	II-97	-77	-70	II-90	-78	-80	-77	-79	-77	-72	-76	-74
IE	-60	III-93	-40	-21	IV-99	-41	-40	-38	-36	-31	-27	-24	-24
IT	-87	I-05	-61	-47	II-90	-80	-79	-82	-74	-80	-82	-87	-81
CY	-66	I-03	-54	-45	I-04	-57	-54	-45	-51	-49	-53	-53	-52
LV	-84	I-00	-69	-11	I-02	-53	-54	-61	-53	-53	-52	-64	-59
LT	-83	I-05	-73	-65	III-01	-75	-71	-77	-76	-77	-78	-83	-76
LU⁽ⁿ⁾	-63	I-04	-44	-23	III-02	-57	-39	-63	-62	-54	-61	-58	-56
HU	-87	II-04	-69	-33	I-00	-84	-82	-86	-87	-85	-83	-81	-85
NL	-55	III-03	-44	-37	IV-99	-55	-53	-49	-51	-48	-48	-51	-52
AT	-80	I-04	-49	44	I-01	-56	-57	-80	-60	-61	-60	-63	-62
PL	-77	III-03	-75	-72	IV-01	-77	-76	-73	-73	-73	-75	-75	-75
PT^(f)	-84	II-04	-67	-56	III-98	-75	-82	-83	-84	-81	-81	-80	-83
SI	-77	I-04	-55	-44	I-01	-69	-74	-77	-72	-67	-69	-70	-69
SK	-85	II-04	-79	-75	IV-02	-82	-83	-82	-85	-84	-85	-82	-80
FI	-62	IV-04	-45	-31	IV-02	-58	-55	-57	-57	-57	-62	-58	-59
SE	-58	I-04	-39	-27	I-00	-50	-51	-58	-57	-52	-54	-56	-58
UK	-71	III-93	-49	-8	II-00	-61	-57	-62	-67	-63	-60	-61	-63

Intention to purchase or build a home within the next 12 months (s.a.)^{(a)(b)}

	Since 01/1990					2003		2004				2005	
	Min.		Ave.	Max.		III	IV	I	II	III	IV	I	II
	Value	Date		Value	Date								
EU	-87	I-05	-82	-70	II-00	-85	-86	-85	-86	-86	-86	-87	-87
Euro area	-89	I-05	-83	-78	I-01	-87	-88	-88	-87	-87	-88	-89	-88
BE	-93	IV-03	-79	-67	II-95	-91	-93	-90	-91	-87	-90	-89	-89
CZ	-92	I-05	-88	-83	II-02	-89	-88	-89	-91	-89	-88	-92	-85
DK	-86	III-03	-76	-62	II-02	-86	-81	-83	-79	-79	-75	-80	-82
DE	-93	II-04	-83	-78	IV-99	-89	-90	-91	-93	-91	-91	-92	-92
EE	-90	I-05	-37	11	IV-99	-84	-83	-86	-88	-88	-89	-90	-89
EL	-92	I-95	-82	-68	I-03	-81	-80	-82	-82	-82	-80	-84	-79
ES	-88	IV-03	-80	-71	III-99	-86	-88	-86	-85	-86	-82	-85	-83
FR^(e)	-90	II-92	-87	-81	II-04	-83	-85	-84	-81	-84	-85	-85	-86
IE	-83	IV-93	-79	-73	III-04	-77	-77	-77	-79	-73	-76	-76	-76
IT	-94	I-05	-85	-79	IV-90	-94	-92	-90	-88	-92	-92	-94	-92
CY	-80	I-03	-73	-65	I-04	-71	-67	-65	-69	-67	-74	-75	-73
LV	-95	I-03	-84	-15	I-02	-76	-80	-94	-76	-76	-70	-89	-77
LT	-91	I-04	-88	-82	I-03	-91	-89	-91	-90	-89	-90	-91	-89
LU⁽ⁿ⁾	-82	IV-03	-73	-64	IV-02	-79	-82	-76	-78	-72	-75	-78	-75
HU	-90	II-04	-76	-39	I-00	-88	-88	-90	-90	-89	-89	-84	-87
NL	-84	IV-03	-77	-68	III-99	-81	-84	-82	-79	-80	-83	-77	-80
AT	-99	I-04	-78	51	I-01	-83	-80	-99	-83	-85	-81	-90	-86
PL	-89	I-03	-86	-82	I-04	-87	-87	-82	-85	-87	-85	-88	-86
PT^(f)	-90	II-05	-78	-70	II-90	-86	-87	-88	-89	-87	-89	-88	-90
SI	-89	IV-03	-77	-71	IV-96	-87	-89	-83	-83	-79	-82	-82	-83
SK	-90	IV-03	-86	-82	II-00	-86	-90	-87	-88	-89	-88	-88	-86
FI	-87	IV-03	-81	-76	III-02	-85	-87	-85	-84	-86	-85	-85	-82
SE	-78	I-96	-72	-61	IV-02	-72	-74	-73	-77	-74	-76	-75	-75
UK	-88	II-01	-75	-9	II-00	-75	-76	-75	-80	-80	-80	-81	-79

TABLE 4b (continued): **Quarterly survey of consumers**

	Intention to carry out home improvements over the next 12 months (s.a.) ^{(a)(b)}												
	Since 01/1990					2003		2004				2005	
	Min.		Ave.	Max.		III	IV	I	II	III	IV	I	II
Value	Date		Value	Date									
EU^(d)	-66	IV-96	-61	-51	II-00	-59	-58	-57	-55	-56	-55	-55	-56
Euro area^(d)	-68	III-93	-62	-57	III-00	-64	-63	-62	-60	-61	-60	-61	-61
BE	-65	III-97	-53	-32	III-01	-52	-50	-49	-50	-48	-48	-46	-47
CZ	-52	III-01	-36	-26	III-03	-26	-33	-35	-33	-33	-35	-31	-27
DK	-87	I-90	-67	-26	I-00	-56	-62	-64	-47	-60	-55	-67	-51
DE	-60	III-93	-54	-46	I-90	-54	-51	-51	-51	-54	-51	-52	-49
EE	-68	IV-92	-46	-16	III-02	-25	-27	-27	-32	-39	-44	-32	-20
EL	-83	III-95	-69	-44	IV-95	-80	-76	-72	-63	-64	-68	-79	-81
ES	-82	II-94	-73	-61	IV-90	-80	-80	-80	-80	-78	-74	-79	-74
FR^(e)	-79	IV-95	-72	-56	II-04	-68	-70	-64	-56	-59	-59	-59	-65
IE	-81	II-90	-68	-56	II-02	-68	-59	-63	-61	-59	-56	-58	-60
IT	-87	III-03	-69	-59	III-98	-87	-84	-84	-84	-85	-84	-85	-83
CY	-71	IV-04	-59	-44	III-01	-56	-62	-55	-62	-62	-71	-70	-69
LV	-77	IV-95	-60	-10	I-02	-41	-38	-46	-40	-44	-40	-51	-42
LT	-66	IV-01	-61	-57	I-03	-62	-57	-61	-59	-59	-62	-62	-60
LU^(a)	-44	I-03	-32	-20	I-05	-31	-27	-26	-22	-27	-25	-20	-33
HU	-73	II-04	-54	-23	III-00	-68	-68	-72	-73	-68	-71	-62	-68
NL	-59	II-96	-48	-35	IV-00	-44	-47	-47	-42	-43	-47	-46	-48
AT	-56	I-03	-39	3	I-01	-24	-22	-32	-23	-27	-28	-28	-24
PL	-48	III-03	-38	-30	III-04	-48	-39	-34	-31	-30	-36	-38	-42
PT^(f)	-85	III-93	-60	50	III-92	-68	-73	-75	-75	-75	-75	-79	-82
SI	-48	I-04	-29	-17	II-01	-41	-46	-48	-42	-34	-35	-33	-32
SK	-63	III-04	-56	-48	IV-01	-59	-61	-57	-63	-63	-60	-58	-55
FI	-72	III-98	-65	-53	I-05	-66	-64	-64	-66	-65	-60	-53	-55
SE	-47	II-96	-31	-18	IV-04	-18	-21	-26	-27	-25	-18	-22	-21
UK	-74	III-96	-55	-7	II-00	-40	-37	-34	-37	-39	-35	-35	-37

(a) Data collected in January, April, July and October each year.

(b) Balances: i.e., differences between the percentages of respondents giving positive and negative replies.

TABLE 5: Monthly survey of retail trade (s.a.)^{(a)(b)}

		Since 01/1990						2004						2005					
		Min.		Ave.		Max.		May	June	July	Aug.	Sep.	Oct.	Nov.	Dec.	Jan.	Feb.	Mar.	Apr.
		Value	Date	Value	Date	Value	Date												
RETAIL TRADE CONFIDENCE INDICATOR	EU	-19	12-92	-7	4	07-90	-3	-4	-6	-4	-7	-4	-8	-6	-5	-7	-9	-9	
	Euro area	-21	03-93	-9	8	08-90	-7	-10	-9	-7	-9	-7	-10	-7	-6	-8	-10	-8	
	BE	-25	05-93	-6	13	04-90	-1	-2	-5	-3	1	-1	-3	-2	1	-2	-10	-4	
	CZ	-1	02-99	14	26	08-02	16	18	20	15	25	25	23	17	17	20	19	14	
	DK	-6	10-01	17	37	11-94	19	20	20	24	24	28	26	29	28	28	31	29	
	DE	-44	01-03	-18	21	02-91	-21	-28	-27	-23	-28	-23	-27	-19	-17	-22	-30	-25	
	EE ⁽ⁿ⁾	-37	03-99	6	37	05-04	37	30	22	23	21	22	20	0	4	18	22	28	
	EL	-24	06-95	1	27	03-04	20	17	15	16	18	14	9	8	13	5	9	10	
	ES	-36	02-93	-7	10	06-00	-6	-5	-6	-9	-10	-11	-11	-10	-10	-12	-7	-2	
	FR	-37	04-97	-16	6	10-04	-2	-3	-2	0	1	6	-1	1	-2	-3	0	1	
	IE	-21	05-03	3	24	06-00	-3	-3	2	0	-3	1	-7	-1	-4	-8	-3	-11	
	IT	-19	10-96	8	39	10-95	5	6	11	15	9	6	7	5	10	14	12	3	
	CY ⁽ⁿ⁾	-21	04-03	-6	4	01-04	-5	-5	-4	-5	-3	-2	-1	-2	-1	-3	0	-1	
	LV	1	10-96	9	19	06-03	14	15	15	15	13	14	13	10	12	14	11	11	
	LT	-25	09-00	-5	26	06-04	23	26	11	9	11	13	11	11	5	10	-5	-1	
	HU	-28	03-05	-7	9	11-97	-6	-9	-10	-12	-14	-19	-23	-24	-20	-20	-28	-24	
	NL	-16	12-03	13	30	10-99	-10	-10	-11	-6	-5	-3	-9	-10	-7	-10	-6	-4	
	AT	-29	03-03	-13	4	07-00	-5	-13	-12	-14	-8	-14	-18	-12	-15	-14	-10	-9	
	PL	-19	01-02	-6	7	07-98	-4	-4	-6	-9	-9	-9	-10	-8	-2	-6	-7	-8	
	PT ^(e)	-27	01-03	-7	4	01-99	-7	-10	-6	-8	-5	-8	-11	-7	-7	-10	-7	-7	
SI	3	01-01	11	23	04-99	14	13	11	13	10	12	13	14	13	10	8	14		
SK	-17	10-93	8	34	11-98	14	13	10	-2	5	0	3	-7	8	5	12	15		
FI	-17	11-00	-4	10	05-04	10	0	2	-4	-3	1	-6	4	-1	-8	-4	-1		
SE	-8	09-01	6	27	04-00	4	6	0	6	1	0	-3	0	0	2	0	1		
UK	-27	09-92	-4	20	06-04	15	20	5	5	-3	4	0	-3	-5	-9	-13	-19		
PRESENT BUSINESS SITUATION	EU	-25	12-94	-8	18	04-90	-2	-3	-3	-3	-7	-7	-10	-6	-6	-11	-13	-12	
	Euro area	-29	12-94	-10	21	11-90	-10	-14	-10	-10	-11	-13	-17	-12	-8	-14	-15	-11	
	BE	-41	10-95	-6	29	06-00	-1	-5	-7	-5	-2	1	-11	2	1	-7	-16	-4	
	CZ	0	11-98	27	52	08-02	37	42	37	46	47	49	45	43	49	52	49	39	
	DK	-1	08-01	28	57	11-94	33	29	29	34	36	44	43	49	52	44	47	47	
	DE	-66	02-02	-21	46	11-90	-25	-34	-31	-35	-32	-38	-36	-21	-23	-34	-37	-25	
	EE ⁽ⁿ⁾	-53	06-99	5	72	05-04	72	63	55	55	46	43	33	33	56	22	13	28	
	EL	-50	04-95	-8	40	01-04	35	22	21	24	27	17	18	25	32	12	14	8	
	ES	-72	07-93	-29	4	06-00	-34	-25	-26	-30	-33	-36	-34	-35	-31	-34	-34	-28	
	FR	-50	03-93	-13	11	10-94	2	-4	5	6	7	8	-9	-5	3	-2	-1	2	
	IE	-30	05-03	7	37	06-98	0	-3	5	4	-11	-3	-13	-10	-3	-4	-2	-10	
	IT	-42	02-95	14	73	02-93	7	7	15	26	14	9	13	3	12	14	16	0	
	CY ⁽ⁿ⁾	-66	04-03	-31	6	01-04	-24	-24	-21	-25	-26	-15	-14	-29	-12	-15	-28	-47	
	LV	-18	07-96	4	32	07-03	24	24	22	24	20	20	20	19	20	22	14	17	
	LT	-37	03-00	-13	43	06-04	35	43	12	10	15	15	15	16	10	14	-5	-2	
	HU	-41	03-05	-6	16	03-98	2	-7	-11	-9	-16	-28	-30	-30	-24	-19	-41	-37	
	NL	-27	12-03	29	57	06-99	-14	-13	-11	-7	-5	-3	-13	-12	-7	-10	-11	-4	
	AT	-36	04-03	-12	13	07-00	1	-17	-9	-16	-7	-18	-26	-14	-14	-13	-19	-11	
	PL	-36	01-01	-14	20	02-98	1	0	-5	-19	-20	-16	-15	-16	3	-8	-15	-12	
	PT ^(e)	-46	01-03	-20	3	07-99	-23	-31	-25	-29	-21	-28	-32	-26	-26	-32	-26	-23	
SI	2	04-02	18	44	01-99	23	23	23	21	19	25	24	21	15	17	11	15		
SK	-35	06-95	10	58	11-98	24	14	12	-7	4	-9	-14	-22	2	-2	-1	19		
FI	-15	11-00	7	40	05-04	40	20	25	9	4	13	-2	13	11	4	9	9		
SE	-21	10-96	8	34	07-00	6	13	8	12	3	1	1	0	7	9	3	-1		
UK	-57	09-92	-4	42	06-04	24	42	21	21	6	13	15	14	-5	-8	-14	-22		
VOLUME OF STOCKS	EU	11	01-91	16	22	03-02	15	16	16	13	16	14	14	13	12	14	15	16	
	Euro area	7	01-91	16	23	10-96	15	16	15	12	16	14	12	12	11	13	13	14	
	BE	-5	09-90	13	32	03-92	5	5	10	7	4	5	3	6	5	8	15	12	
	CZ	0	03-00	10	27	05-95	11	6	6	11	12	13	9	15	8	13	13	17	
	DK	-1	04-98	18	32	04-00	24	18	22	18	23	18	13	16	18	13	14	15	
	DE	4	02-91	26	43	02-02	26	29	26	17	27	17	17	17	15	18	22	23	
	EE ⁽ⁿ⁾	-7	09-96	10	25	09-99	7	11	21	13	8	9	12	17	17	19	14	12	
	EL	-7	11-02	13	41	12-93	7	0	5	12	17	19	23	28	12	18	21	20	
	ES	-8	02-96	5	16	07-92	4	6	5	8	7	6	8	8	6	8	8	6	
	FR	-3	10-93	11	21	09-98	11	10	13	12	11	11	10	7	14	14	8	8	
	IE	-5	06-00	10	25	08-98	8	6	17	8	7	9	12	8	8	10	9	7	
	IT	-8	10-99	8	43	10-96	7	8	2	1	8	16	6	6	-2	3	1	5	
	CY ⁽ⁿ⁾	-17	02-03	-5	6	12-03	-1	-2	-7	-4	-8	-7	-2	-4	-11	-4	6	-16	
	LV	-18	07-96	-4	8	12-02	-1	1	-1	-1	-3	0	1	2	-1	0	0	3	
	LT	-21	12-99	-1	13	10-96	6	2	-1	0	0	-2	0	2	3	2	13	-2	
	HU	4	02-96	23	33	01-99	19	22	17	23	20	20	23	28	24	23	21	17	
	NL	5	07-97	11	18	12-04	17	16	17	16	15	14	14	18	16	16	17	16	
	AT	-2	01-00	25	36	01-96	23	27	25	25	18	24	23	23	31	25	25	21	
	PL	-9	09-03	-2	5	04-05	-5	-6	-3	-4	-2	-2	-1	-5	5	5	4	5	
	PT ^(e)	-3	12-03	9	25	06-90	8	2	3	4	2	8	7	1	5	2	2	3	
SI	8	05-02	17	33	01-99	9	11	18	17	17	19	17	12	14	14	13	10		
SK	-5	06-00	10	26	02-95	13	13	19	22	16	13	12	12	9	14	7	7		
FI	22	12-04	29	40	08-00	30	30	29	28	22	24	24	22	24	29	29	30		
SE	18	04-00	31	44	02-98	25	28	33	30	25	31	32	31	29	29	30	30		
UK	4	04-93	19	33	02-91	12	16	19	19	19	14	19	17	14	16	24	26		

TABLE 5 (continued): Monthly survey of retail trade (s.a.)^{(a)(b)}

		Since 01/1990						2004						2005					
		Min.		Ave.		Max.		May	June	July	Aug.	Sep.	Oct.	Nov.	Dec.	Jan.	Feb.	Mar.	Apr.
		Value	Date	Value	Date	Value	Date												
EXPECTED	EU	-20	01-93	2	18	06-00	9	7	3	6	2	9	1	2	3	3	1	1	
BUSINESS	Euro area	-26	02-93	-2	17	06-00	3	0	-1	2	0	7	-1	2	1	2	-1	1	
SITUATION	BE	-23	04-03	2	22	04-98	2	5	2	3	9	1	5	-1	7	7	1	3	
Component of the retail confidence indicator	CZ	2	09-00	23	46	02-02	22	17	28	9	40	38	34	24	10	22	21	22	
	DK	8	10-01	40	71	07-94	50	48	54	56	59	57	50	54	50	53	58	54	
	DE	-42	10-02	-7	26	12-90	-13	-20	-23	-16	-25	-12	-27	-20	-13	-14	-30	-26	
	EE ⁽ⁿ⁾	-41	03-99	22	69	04-05	47	39	32	28	25	31	38	-17	-27	50	67	69	
	EL	-4	05-95	25	60	06-00	31	30	28	36	45	44	34	26	20	22	32	40	
	ES	-34	02-93	14	34	04-91	22	17	14	12	11	8	11	14	8	5	20	27	
	FR	-64	02-93	-23	19	10-04	4	3	4	5	5	19	16	14	4	5	7	9	
	IE	-31	07-03	14	44	11-97	-1	-1	16	5	9	16	5	15	-1	-9	0	-14	
	IT	-20	03-93	17	59	06-96	14	20	19	20	22	25	12	18	16	30	20	15	
	CY ⁽ⁿ⁾	-20	06-02	9	40	11-03	9	6	1	6	9	2	10	18	-2	3	35	28	
	LV	2	01-04	19	36	09-99	16	21	21	21	17	22	21	13	14	19	18	20	
	LT	-35	09-00	-4	45	03-04	41	39	21	17	18	23	18	19	8	17	4	-3	
	HU	-22	03-05	8	39	02-98	-1	1	-2	-4	-5	-9	-17	-15	-14	-18	-22	-17	
	NL	-5	12-03	20	41	10-99	2	-2	-4	6	6	8	1	1	1	-3	9	9	
	AT	-24	03-03	-3	15	07-00	6	6	-1	0	1	1	-5	0	0	-4	14	5	
	PL	-33	12-01	-7	17	07-98	-19	-18	-16	-13	-9	-14	-15	-12	-3	-6	-4	-6	
	PT ^(c)	-26	01-03	8	39	01-90	10	2	9	9	7	12	8	8	10	5	8	5	
	SI	15	02-03	31	47	04-99	29	26	28	36	28	31	31	34	37	27	26	37	
	SK	-14	11-94	23	60	12-96	32	38	36	23	27	23	34	13	30	30	45	32	
	FI	-4	04-03	9	39	05-97	21	11	10	9	10	15	7	20	9	1	9	17	
SE	19	10-01	42	67	04-00	30	31	24	36	25	31	21	29	21	26	26	33		
UK	-25	10-98	12	40	01-97	32	33	15	14	5	14	4	-6	5	-2	-3	-8		
INTENTIONS OF PLACING ORDERS	EU	-16	10-02	-3	13	01-90	0	-2	-3	-1	-6	-3	-9	-6	-6	-3	-7	-8	
	Euro area	-23	10-02	-5	15	01-90	-7	-8	-6	-4	-8	-7	-11	-7	-8	-3	-8	-9	
	BE	-27	05-93	-7	15	03-90	-6	-7	-8	-3	-3	-4	-10	-6	-8	-7	-8	-8	
	CZ	-34	02-96	29	56	02-95	26	26	23	26	24	33	22	30	10	22	14	16	
	DK	-12	10-01	18	58	07-94	19	21	20	21	23	28	28	25	21	28	27	23	
	DE	-51	09-02	-15	21	02-91	-21	-27	-24	-17	-28	-27	-31	-21	-22	-15	-27	-28	
	EE ⁽ⁿ⁾	-46	03-99	13	57	06-98	33	24	23	11	12	11	14	-31	-23	37	56	51	
	EL	-23	04-93	10	38	06-96	17	22	17	18	19	12	5	16	14	2	15	14	
	ES	-31	02-93	5	21	01-90	16	13	9	2	-1	1	-1	4	-1	-3	1	11	
	FR	-37	12-92	-14	11	10-99	-9	-7	-6	-5	-6	3	-2	-8	-4	-3	-3	-1	
	IE	-43	05-03	-4	27	08-00	-13	-9	-7	-11	-7	10	-14	0	-21	-18	-13	-11	
	IT	-25	10-97	21	69	04-92	14	18	22	27	22	13	12	14	11	35	18	7	
	CY ⁽ⁿ⁾	-46	06-02	-11	15	12-04	-1	2	-17	-8	-2	-4	2	15	-20	-11	0	2	
	LV	-4	10-96	9	27	03-02	7	11	12	13	9	12	17	9	10	11	16	13	
	LT	-23	01-03	6	51	07-04	32	38	51	18	21	23	27	19	17	23	5	14	
	HU	-29	03-05	-1	23	05-98	-5	-8	-5	-9	-9	-20	-25	-19	-17	-25	-29	-18	
	NL	-22	09-03	4	25	08-99	-13	-19	-13	-11	-10	-10	-13	-15	-12	-17	-10	-7	
	AT	-42	03-99	-31	-16	06-00	-23	-27	-28	-26	-25	-26	-32	-26	-25	-28	-27	-22	
	PL	-30	12-01	-6	13	12-98	-13	-10	-8	-6	-5	-11	-13	-8	-3	-6	-2	-7	
	PT ^(c)	-41	01-03	-13	12	11-98	-5	-14	-3	-15	-14	-6	-12	-11	-8	-3	-6	-13	
	SI	-2	10-01	14	30	10-00	10	14	15	14	16	11	14	16	12	10	6	13	
	SK	-19	03-96	34	78	01-02	48	37	42	31	36	40	43	19	34	37	51	47	
	FI	-20	07-03	-7	11	04-04	5	-5	2	-4	-4	0	-1	9	9	-4	4	4	
	SE	-17	10-01	15	52	03-00	10	10	2	12	8	4	-2	3	2	6	3	5	
	UK	-37	03-91	4	34	08-96	27	22	10	6	-1	15	-2	-6	0	-9	-12	-12	
EMPLOYMENT EXPECTATIONS	EU	-13	12-92	-1	9	08-00	0	-2	0	2	-2	2	-2	-3	0	-1	0	-1	
	Euro area	-11	12-92	-1	10	08-00	2	-2	1	3	0	3	-1	-3	2	0	1	1	
	BE	-13	12-92	3	16	04-90	15	6	9	8	13	9	10	11	15	9	4	2	
	CZ	-37	01-95	1	22	05-02	-1	1	3	12	8	7	9	17	6	8	8	1	
	DK	-8	05-01	8	28	05-00	6	5	8	7	4	9	6	10	10	9	16	12	
	DE ^(d)	-32	01-03	-8	15	03-98	-7	-16	-12	-6	-13	-7	-9	-11	-6	-10	-12	-10	
	EE ⁽ⁿ⁾	-30	03-99	-4	15	04-05	11	12	2	-1	-2	2	5	-3	-5	9	14	15	
	EL	-8	02-04	29	62	03-98	-4	15	20	21	22	10	5	4	3	2	0	8	
	ES	-19	09-93	0	8	12-98	3	8	2	1	0	-2	3	3	-1	4	5	3	
	FR	-14	06-91	-2	12	10-00	7	-1	-1	1	5	2	-2	-6	5	1	0	1	
	IE	-17	05-03	2	22	03-98	-1	-7	-1	-3	-10	1	-5	-4	-9	-6	1	-3	
	IT	-34	02-97	11	54	02-00	15	18	28	29	15	32	15	8	19	21	31	26	
	CY ⁽ⁿ⁾	-6	07-02	0	2	01-03	1	1	1	0	1	0	1	-1	-1	0	-2	1	
	LV	-23	04-96	-1	13	07-03	7	6	10	10	10	9	4	10	10	10	9	5	
	LT	-48	07-95	-14	60	02-05	49	54	55	22	25	28	19	50	41	60	48	47	
	HU	-36	05-96	-9	5	11-03	-8	-4	-5	-11	-9	-12	-16	-13	-10	-13	-19	-15	
	NL	-6	03-04	3	13	06-99	-6	-3	-5	-4	-3	-4	-2	-3	-4	-3	-2	-2	
	AT	-20	03-99	-5	71	01-96	-6	-6	-4	-4	-4	-5	-8	-6	-5	-7	-6	-7	
	PL	-28	12-01	-12	2	07-97	-8	-11	-14	-11	-9	-10	-9	-10	-8	-7	-7	-9	
	PT ^(c)	-23	05-03	-4	13	09-97	-11	-12	-2	-11	-10	-12	-11	-6	-3	-11	-11	-9	
	SI	-46	02-99	-10	11	06-04	1	11	8	9	-3	0	-6	-4	5	-13	-13	-4	
	SK	-71	12-93	-9	31	09-02	3	0	-3	-18	-26	-6	-6	-26	-15	-13	-17	-9	
	FI	-16	07-03	-3	10	05-04	10	7	4	-1	-4	1	1	-3	-2	-2	-2	-4	
	SE	-34	10-96	-3	23	06-00	-8	-11	-15	-12	-13	-10	-13	-11	-15	-19	-15	-14	
	UK	-32	12-91	-2	25	10-97	-5	-2	0	0	-7	-2	-3	-1	-10	-7	-2	-6	

(a) United Kingdom: refers to the volume of sales for the time of the year.

(b) The indicator is the arithmetic average of the balances (%) for the present and the future business situation, and for stocks – with inverted sign.

(c) Due to a change in sampling method, the data for the period March 2003 to March 2004 have been revised.

(d) Quarterly data, seasonally adjusted monthly. (n) Not seasonally adjusted

TABLE 6: Monthly survey of construction industry (s.a.)^(a)

		Since 01/1985						2004						2005					
		Min.		Ave.		Max.		May	June	July	Aug.	Sep.	Oct.	Nov.	Dec.	Jan.	Feb.	Mar.	Apr.
		Value	Date	Value	Date	Value	Date												
CONSTRUCTION CONFIDENCE INDICATOR	EU	-42	10-93	-21	3	02-90	-14	-13	-13	-13	-13	-12	-11	-11	-11	-12	-12	-12	
	Euro area	-44	08-96	-21	4	02-90	-16	-15	-16	-15	-15	-14	-14	-13	-13	-14	-13	-14	
	BE	-35	11-95	-12	10	02-00	-8	-8	-9	-9	-5	-5	-4	-9	-6	-6	-4	-6	
	CZ	-64	06-99	-18	3	06-95	0	2	-5	-5	-10	-9	-5	1	3	-4	-7	-9	
	DK	-37	12-91	-9	19	03-98	-4	-6	-6	-5	-2	-2	2	4	2	4	3	5	
	DE	-62	11-02	-36	3	01-91	-48	-48	-49	-53	-52	-54	-53	-55	-50	-55	-51	-50	
	EE⁽ⁿ⁾	-46	03-99	2	35	04-05	27	27	22	21	20	12	6	8	13	20	27	35	
	EL	-53	03-05	-11	33	04-00	-6	-13	-24	-35	-45	-37	-47	-49	-44	-48	-53	-48	
	ES	-57	10-92	-3	42	01-99	7	7	5	25	18	26	22	24	17	26	28	20	
	FR	-60	03-93	-17	34	10-00	5	2	1	3	6	5	7	8	11	11	11	9	
	IE	-54	09-02	10	58	06-97	17	30	36	39	36	33	28	27	13	12	27	29	
	IT	-68	10-93	-13	21	05-90	-5	10	13	3	2	2	5	4	6	2	-5	-3	
	CY⁽ⁿ⁾	-4	01-05	14	41	11-03	23	15	41	25	1	7	3	-2	-4	0	5	0	
	LV	-64	07-93	-30	3	03-05	-1	-5	-8	-9	-11	-4	-3	-7	0	-2	3	3	
	LT	-76	09-00	-42	-2	03-05	-14	-16	-21	-21	-12	-11	-9	-11	-10	-5	-2	-22	
	LU	-73	03-94	-26	24	03-90	-43	-37	-30	-28	-34	-19	-16	-10	-12	-22	-29	-20	
	HU	-24	12-04	-7	11	09-98	-10	-5	-11	-8	-10	-16	-20	-24	-19	-20	-17	-17	
	NL	-25	05-03	-3	27	12-00	-17	-17	-16	-14	-12	-7	-7	-7	-6	-5	-2	-1	
	AT	-60	04-96	-30	-13	02-03	-23	-29	-25	-24	-25	-23	-21	-16	-25	-22	-24	-24	
	PL	-63	12-02	-44	-22	03-98	-42	-40	-37	-37	-38	-32	-33	-39	-29	-32	-30	-29	
	PT	-56	02-03	-26	-1	12-97	-42	-42	-44	-40	-41	-38	-34	-32	-33	-40	-34	-39	
	SI⁽ⁿ⁾	-28	05-02	-8	8	07-04	-2	8	8	7	5	-2	-5	-10	6	-3	-3	3	
	SK	-86	07-99	-29	18	03-97	-22	-16	-18	-15	-14	-13	-23	-20	-12	-17	-13	-11	
	FI	-97	09-91	-19	48	06-98	7	-1	0	2	-1	0	-4	4	-7	12	16	21	
	SE	-83	12-93	-39	25	01-01	-28	-21	-9	-18	-6	-1	4	14	10	3	-3	6	
	UK	-79	06-91	-20	5	08-04	2	3	4	5	3	-3	1	-1	-2	-3	-2	-7	
	ORDER BOOKS	EU	-55	08-93	-30	-2	03-90	-21	-23	-23	-22	-21	-22	-18	-19	-18	-17	-17	-20
		Euro area	-54	08-93	-29	-3	03-90	-22	-24	-25	-24	-22	-23	-20	-21	-19	-18	-17	-20
Component of the construction confidence indicator	BE	-48	02-96	-23	2	02-00	-19	-18	-20	-19	-18	-14	-14	-20	-16	-16	-12	-15	
	CZ	-72	06-99	-23	9	12-02	0	5	-7	-8	-18	-20	-9	2	7	-4	-7	-13	
	DK	-49	12-91	-12	33	03-95	-7	-8	-8	-5	-3	-3	0	4	2	3	4	6	
	DE	-71	10-02	-45	-7	03-91	-57	-60	-63	-69	-63	-65	-65	-66	-64	-66	-61	-63	
	EE⁽ⁿ⁾	-64	06-99	-6	49	08-02	12	20	20	21	26	25	13	10	16	6	7	20	
	EL	-77	06-95	-36	16	04-00	-9	-27	-18	-22	-27	-37	-54	-53	-49	-61	-63	-60	
	ES	-64	08-93	0	50	02-05	25	12	9	33	24	20	36	32	30	50	45	31	
	FR	-74	09-93	-24	37	10-00	1	-2	-6	-4	1	0	3	2	9	10	8	5	
	IE	-61	06-94	4	68	06-97	1	20	11	20	16	9	25	16	4	-9	28	25	
	IT	-84	02-94	-25	17	05-90	-24	-11	-6	-12	-10	-12	-6	-6	-3	-3	-10	-10	
	CY⁽ⁿ⁾	-5	06-02	8	51	12-03	18	12	34	19	0	6	3	-1	-3	-2	-3	0	
	LV	-84	01-96	-53	-12	04-05	-19	-20	-28	-23	-25	-21	-20	-22	-16	-17	-14	-12	
	LT	-96	09-00	-66	-22	09-04	-36	-35	-40	-41	-22	-27	-29	-34	-35	-30	-26	-28	
	LU	-73	08-93	-28	12	03-90	-47	-36	-34	-35	-35	-26	-17	-9	-19	-28	-32	-24	
	HU	-35	12-04	-17	3	09-98	-20	-16	-22	-17	-21	-28	-32	-35	-32	-33	-30	-28	
	NL	-30	09-93	-8	20	09-00	-19	-23	-19	-18	-17	-17	-15	-17	-13	-13	-9	-7	
	AT	-65	04-96	-41	-22	11-99	-38	-45	-39	-39	-40	-34	-33	-28	-35	-38	-38	-36	
	PL	-99	12-02	-69	-31	12-01	-70	-68	-66	-66	-66	-63	-64	-76	-61	-62	-60	-59	
	PT	-79	05-94	-44	-9	12-97	-66	-60	-64	-58	-63	-58	-56	-51	-53	-61	-57	-56	
	SI⁽ⁿ⁾	-47	05-02	-12	16	08-04	-14	3	4	16	9	13	10	1	-1	-15	-28	-16	
	SK	-93	03-94	-45	-5	03-97	-49	-38	-34	-33	-30	-27	-36	-31	-27	-29	-25	-23	
	FI	-99	12-93	-26	38	06-98	19	-10	-5	-2	-6	-10	-3	1	-3	9	7	10	
	SE	-97	05-97	-51	33	01-90	-38	-38	-20	-33	-15	-11	-12	0	-7	-5	-10	-2	
	UK	-87	06-91	-35	-3	01-90	-6	-6	-5	-7	-8	-14	-7	-9	-7	-10	-11	-18	
	EMPLOYMENT EXPECTATIONS	EU	-34	04-96	-12	9	02-90	-8	-3	-4	-3	-5	-3	-4	-3	-5	-7	-6	-5
		Euro area	-38	04-96	-13	11	02-90	-11	-6	-7	-6	-9	-5	-7	-6	-7	-10	-9	-7
	Component of the construction confidence indicator	BE	-24	11-95	-1	19	02-90	3	3	3	1	8	5	6	2	3	3	5	4
		CZ	-57	06-99	-14	12	06-95	-1	-1	-3	-3	-2	1	-1	1	-1	-3	-7	-4
DK		-31	09-91	-6	42	03-98	-1	-3	-4	-4	-1	-1	3	5	2	5	3	3	
DE		-59	03-96	-27	19	02-90	-39	-36	-36	-37	-42	-42	-40	-43	-36	-43	-41	-36	
EE⁽ⁿ⁾		-57	03-99	10	58	03-97	42	34	24	21	14	-1	0	6	10	35	47	49	
EL		-64	09-04	14	60	03-99	-3	1	-30	-49	-64	-38	-40	-45	-40	-34	-42	-36	
ES		-66	03-93	-6	54	01-99	-12	2	0	16	11	31	7	17	4	2	11	8	
FR		-51	03-93	-10	31	10-00	9	7	7	9	11	9	11	14	13	13	14	14	
IE		-50	09-02	16	61	07-04	33	40	61	58	56	57	31	38	22	32	26	34	
IT		-60	10-93	-2	31	06-04	15	31	31	18	14	16	15	14	15	8	-1	5	
CY⁽ⁿ⁾		-5	01-05	20	60	11-03	27	18	48	30	2	8	4	-3	-5	3	12	0	
LV		-45	07-93	-7	26	03-04	16	11	12	6	4	13	14	9	16	13	20	18	
LT		-56	09-00	-19	37	03-03	7	3	-2	-2	-2	5	11	13	16	20	21	-15	
LU		-77	02-94	-24	36	03-90	-40	-37	-26	-22	-34	-12	-14	-12	-5	-15	-26	-16	
HU		-13	12-04	2	21	01-98	-1	5	1	1	1	-3	-8	-13	-6	-7	-5	-5	
NL		-26	05-03	2	36	12-00	-14	-11	-13	-10	-6	3	1	3	1	3	4	6	
AT		-76	02-01	-19	14	02-03	-9	-12	-12	-9	-10	-11	-9	-4	-16	-5	-9	-12	
PL		-49	04-02	-14	18	05-96	-13	-13	-8	-8	-9	-2	-3	-2	2	-2	-1	2	
PT		-47	02-03	-7	19	09-97	-19	-24	-25	-21	-19	-18	-13	-12	-12	-19	-12	-22	
SI⁽ⁿ⁾		-30	12-02	-4	22	04-05	10	13	12	-3	1	-16	-20	-21	12	10	22	22	
SK		-86	07-99	-12	41	01-97	4	6	-1	3	3	1	-11	-9	3	-5	-2	1	
FI		-100	04-91	-11	59	03-97	-5	7	4	5	5	10	-4	7	-11	16	26	32	
SE		-78	01-97	-27	45	01-01	-18	-4	2										

TABLE 6 (continued): Monthly survey of construction industry (s.a.)^(a)

		Since 01/1985				2004								2005					
		Min.		Ave.		Max.		May	June	July	Aug.	Sep.	Oct.	Nov.	Dec.	Jan.	Feb.	Mar.	Apr.
		Value	Date	Value	Date	Value	Date												
TREND OF	EU	-35	03-93	-8	15	03-90	-3	1	1	1	0	2	-2	1	7	0	-9	-4	
ACTIVITY	Euro area	-39	03-93	-9	17	03-90	-3	-1	-1	-2	-2	1	-5	0	5	-2	-12	-5	
COMPARED WITH	BE	-37	03-91	-4	36	02-90	-2	-8	-4	-7	0	10	-1	-5	2	3	-14	0	
PRECEDING	CZ	-34	06-99	24	77	01-05	32	37	42	42	33	52	60	60	77	61	50	41	
MONTHS	DK	-21	04-03	-4	19	01-98	2	1	-2	-2	0	-2	8	8	5	9	8	8	
	DE	-44	03-96	-19	19	03-90	-20	-24	-26	-27	-25	-27	-27	-25	-23	-29	-39	-25	
	EE⁽ⁿ⁾	-67	06-99	16	76	09-98	30	52	67	56	60	56	50	19	10	-4	-10	14	
	EL	-50	04-05	6	61	06-98	30	25	23	7	-10	-15	-24	-23	-23	-35	-44	-50	
	ES	-49	07-97	5	59	01-99	-6	0	10	21	0	22	-2	22	27	16	5	23	
	FR	-64	09-93	-9	42	07-00	16	17	10	12	16	20	19	16	20	19	13	13	
	IE	-45	09-91	3	47	05-96	31	41	47	24	23	46	27	10	24	-7	15	6	
	IT	-50	03-93	-2	26	07-04	5	26	26	4	12	10	5	6	15	11	3	2	
	CY⁽ⁿ⁾	-95	09-04	7	56	11-03	14	13	13	28	-95	29	3	-2	-2	-4	7	42	
	LV	-47	04-96	-3	44	06-02	32	34	13	13	12	16	19	9	21	19	21	25	
	LT	-61	03-00	-5	81	06-02	30	56	20	28	18	18	11	0	11	23	-7	10	
	LU	-68	10-02	-23	30	04-91	-24	-35	-38	-29	-6	-17	-18	-4	-2	-9	-32	-41	
	HU	-37	03-03	-8	14	03-99	2	5	5	3	-2	-8	-14	-18	-17	-19	-20	-12	
	NL	-41	02-96	-3	37	03-97	-4	-8	-6	2	8	1	-6	-1	12	2	-5	1	
	AT	-87	04-96	-9	27	01-04	-12	-8	-4	-1	-7	4	8	15	22	-16	-38	-28	
	PL	-30	01-02	9	42	01-05	-3	-2	9	12	11	17	20	24	42	23	0	-3	
	PT	-37	09-03	-9	24	05-97	-27	-34	-21	-10	-5	-10	-13	-16	-8	-12	-24	-29	
	SI⁽ⁿ⁾	-46	03-05	13	45	08-03	3	31	38	34	35	25	29	16	6	-30	-46	-21	
	SK	-43	06-99	6	53	12-04	20	24	40	44	50	47	50	53	37	3	-6	0	
	FI	-88	09-91	5	75	01-98	41	44	18	41	32	25	17	26	25	29	25	11	
	SE	-67	12-91	-13	46	04-01	-30	-17	-13	2	21	9	13	10	16	13	12	11	
	UK	-69	06-91	-6	16	02-04	6	12	8	13	9	3	3	4	9	2	-1	-6	
PRICE	EU	-21	04-96	0	25	02-90	7	5	7	10	6	5	9	6	7	3	1	3	
EXPECTATIONS	Euro area	-27	04-96	-2	32	04-90	2	-1	2	5	1	-1	3	1	2	-2	-3	-1	
	BE	-22	01-96	-1	29	01-90	-2	0	2	0	0	3	0	0	-1	-2	-1	1	
	CZ	-39	08-00	43	80	02-95	38	30	26	38	20	23	27	19	18	22	23	18	
	DK	-36	03-03	-17	0	05-98	-9	-13	-9	-9	-10	-10	-3	-5	-4	-6	-6	-5	
	DE	-45	03-96	-13	45	02-90	-16	-17	-21	-19	-21	-20	-20	-18	-19	-21	-25	-18	
	EE⁽ⁿ⁾	-19	03-97	30	91	06-94	56	45	23	32	34	33	31	40	38	41	49	48	
	EL	-38	04-05	7	35	06-95	-9	-1	-7	-17	-27	-38	-32	-32	-23	-30	-28	-38	
	ES	-20	10-93	18	71	10-00	13	20	25	47	25	18	39	35	25	20	20	23	
	FR	-60	03-93	-17	32	10-00	3	-4	2	3	4	2	3	-3	1	0	1	-5	
	IE	-66	07-03	5	58	03-00	32	13	54	34	16	8	8	5	10	-10	-1	8	
	IT	-16	07-93	18	63	06-90	23	14	22	21	20	17	22	15	29	16	12	17	
	CY⁽ⁿ⁾	1	04-05	37	83	06-04	54	83	78	61	49	18	21	52	19	16	14	1	
	LV	-11	03-01	25	66	01-05	62	60	54	50	50	54	60	62	66	60	48	59	
	LT	-5	03-01	35	89	01-95	46	48	40	47	43	47	48	48	41	46	42	42	
	LU	-67	05-93	-27	29	11-00	-47	-54	-49	-41	-43	-42	-42	-41	-38	-35	-37	-29	
	HU	-3	01-05	11	32	03-01	12	10	10	10	9	11	10	9	-3	1	4	6	
	NL	-7	01-04	25	69	04-01	6	5	7	9	11	13	9	5	-2	11	14	16	
	AT	-53	04-96	-12	18	06-91	12	2	1	-4	-1	2	-4	7	4	0	-1	1	
	PL	-27	03-02	16	45	05-96	14	13	12	9	7	11	10	8	12	9	7	5	
	PT	-40	05-03	1	48	06-90	-15	-17	-17	-13	-16	-10	-10	-12	-11	-10	-7	-23	
	SI⁽ⁿ⁾	-16	10-04	5	20	03-04	17	16	11	13	12	-16	7	4	4	9	12	7	
	SK	-20	08-00	55	93	06-97	45	46	47	62	39	41	38	15	27	25	22	28	
	FI	-45	06-91	9	65	05-97	9	-4	19	6	5	-4	10	4	3	13	9	29	
	SE	-75	06-91	-16	33	01-01	-16	-18	5	-3	9	7	11	10	16	7	5	12	
	UK	-56	12-90	14	43	08-04	38	41	43	43	40	34	43	37	38	33	25	26	

(a) The indicator is the average of the balances (%) for the questions on order-books and employment expectations.

TABLE 7a: Manufacturing industry; future Member States (s.a.)^(a)
Balances: i.e.differences between the percentages of respondents giving positive and negative replies (s.a.)

		Since 01/1990						2004						2005					
		Min.		Ave.		Max.		May	June	July	Aug.	Sep.	Oct.	Nov.	Dec.	Jan.	Feb.	Mar.	Apr.
		Value	Date	Value	Date	Value	Date												
CONFIDENCE INDICATOR	BG	-30	06-93	-8	8	11-95	-1	-1	1	1	0	-1	2	3	2	2	0	2	
	RO	-22	09-92	-1	28	06-96	1	2	5	3	5	4	6	6	5	2	4	-3	
PRODUCTION EXPECTATIONS	BG	-17	02-97	21	42	11-95	24	27	28	28	26	26	32	36	30	30	29	32	
	RO	-8	07-92	23	52	03-03	21	20	25	21	23	28	24	24	29	29	30	20	
ORDER BOOKS	BG	-65	06-93	-44	-19	10-00	-36	-36	-31	-33	-35	-36	-34	-33	-33	-31	-33	-34	
	RO	-53	06-99	-16	50	06-96	-14	-13	-11	-13	-11	-14	-12	-10	-9	-12	-11	-16	
STOCKS OF FINISHED PRODUCTS ^(b)	BG	-22	06-97	2	35	08-93	-9	-6	-5	-7	-9	-8	-8	-7	-7	-7	-5	-7	
	RO	-4	06-96	10	51	07-92	3	1	-2	0	-3	1	-2	-2	5	11	7	13	

(a) The confidence indicator is the arithmetic average of the three components (the last with inverted sign).
(b) Highest figure is considered as minimum, lowest figure is considered as maximum.

TABLE 7b: Services^(a)

		Since 01/1990						2004						2005					
		Min.		Ave.		Max.		May	June	July	Aug.	Sep.	Oct.	Nov.	Dec.	Jan.	Feb.	Mar.	Apr.
		Value	Date	Value	Date	Value	Date												
CONFIDENCE INDICATOR	BG ⁽ⁿ⁾	12	03-03	29	43	06-02	26	29	30	30	33	23	18	23	29	24	26	30	
	RO ⁽ⁿ⁾	6	02-03	30	72	06-04	28	72	47	40	38	35	32	29	30	20	20	22	
ASSESSMENT OF BUSINESS CLIMATE	BG ⁽ⁿ⁾	10	05-03	31	60	12-02	16	15	30	31	28	28	23	20	24	13	17	22	
	RO ⁽ⁿ⁾	9	12-03	40	75	04-03	31	74	52	40	47	43	41	34	43	21	22	25	
EVOLUTION OF DEMAND IN RECENT MONTHS	BG ⁽ⁿ⁾	-11	05-02	17	32	03-04	18	29	21	29	28	25	20	15	15	9	13	8	
	RO ⁽ⁿ⁾	-4	02-03	22	69	06-04	9	69	41	34	22	40	31	28	23	18	16	17	
EVOLUTION OF DEMAND IN THE MONTHS AHEAD	BG ⁽ⁿ⁾	10	11-04	39	69	05-02	44	44	38	31	42	16	10	35	48	49	48	61	
	RO ⁽ⁿ⁾	-23	01-03	26	72	06-04	45	72	48	46	46	22	24	26	24	20	22	23	

(a) The confidence indicator is the arithmetic average of the three components.
(n) Not seasonally adjusted.

TABLE 7c: Consumer opinion and financial condition; future Member States (a)

		Since 01/1990						2004						2005					
		Min.		Ave.		Max.		May	June	July	Aug.	Sep.	Oct.	Nov.	Dec.	Jan.	Feb.	Mar.	Apr.
		Value	Date	Value	Date	Value	Date												
CONFIDENCE INDICATOR	BG ⁽ⁿ⁾	-40	08-03	-29	-15	07-01	-25	-26	-28	-32	-28	-28	-29	-28	-27	-26	-23	-26	
	RO ⁽ⁿ⁾	-33	07-02	-24	-13	01-05	-19	-16	-16	-18	-18	-17	-13	-14	-13	-17	-19	-22	
FINANCIAL SITUATION OVER NEXT 12 MONTHS	BG ⁽ⁿ⁾	-24	08-03	-12	3	07-01	-10	-10	-13	-15	-10	-13	-11	-11	-8	-9	-8	-9	
	RO ⁽ⁿ⁾	-14	07-02	-3	9	01-05	2	4	6	6	6	4	9	7	9	5	4	0	
GEN. ECON. SITUATION OVER NEXT 12 MONTHS	BG ⁽ⁿ⁾	-27	08-03	-8	15	07-01	-5	-7	-11	-13	-9	-9	-10	-5	-4	-4	0	-3	
	RO ⁽ⁿ⁾	-14	07-02	-1	12	01-05	4	10	8	7	5	7	8	7	12	8	6	1	
SAVINGS OVER NEXT 12 MONTHS	BG ⁽ⁿ⁾	-80	03-02	-75	-68	06-01	-75	-76	-73	-78	-76	-73	-79	-75	-76	-75	-73	-74	
	RO ⁽ⁿ⁾	-62	06-03	-54	-45	12-04	-52	-50	-47	-48	-50	-47	-46	-45	-48	-51	-48	-53	
UNEMPLOYMENT OVER NEXT 12 MONTHS	BG ⁽ⁿ⁾	3	07-01	19	30	02-02	11	13	17	20	17	18	18	20	21	18	13	17	
	RO ⁽ⁿ⁾	25	11-04	38	51	01-02	31	28	32	36	31	33	25	25	25	30	38	35	

(a) The confidence indicator is the average of the four components.
(n) Not seasonally adjusted.

TABLE 7d: Retail trade (s.a.)^(a)

		Since 01/1990						2004						2005					
		Min.		Ave.		Max.		May	June	July	Aug.	Sep.	Oct.	Nov.	Dec.	Jan.	Feb.	Mar.	Apr.
		Value	Date	Value	Date	Value	Date												
CONFIDENCE INDICATOR	BG	5	11-00	19	32	06-00	11	15	11	15	12	15	13	13	11	9	10	11	
	RO	1	06-99	16	36	12-97	18	25	19	22	24	24	23	23	22	17	19	18	
PRESENT BUSINESS SITUATION	BG	-3	09-96	22	54	11-97	7	16	11	13	11	14	8	12	8	5	2	8	
	RO	-1	02-03	28	58	09-97	21	34	23	25	27	33	28	32	35	23	18	18	
VOLUME OF STOCKS	BG	-55	03-97	-19	12	11-00	-9	-10	-7	-8	-8	-5	-8	-4	-4	-5	-6	-5	
	RO	-20	12-94	4	55	10-95	1	1	1	3	-3	2	-1	2	-3	-2	-1	0	
EXPECTED BUSINESS SITUATION	BG	-33	02-97	15	43	03-00	17	18	15	22	17	27	23	23	21	16	21	20	
	RO	-37	10-94	24	74	11-95	34	40	36	45	41	40	40	39	28	28	38	35	

(a) The confidence indicator is the arithmetic average of the three components (for stocks, with inverted sign).

TABLE 7e: Construction industry; future Member States (s.a.)^(a)

		Since 01/1990						2004						2005					
		Min.		Ave.		Max.		May	June	July	Aug.	Sep.	Oct.	Nov.	Dec.	Jan.	Feb.	Mar.	Apr.
		Value	Date	Value	Date	Value	Date												
CONFIDENCE INDICATOR	BG	-56	03-93	-29	1	03-05	-17	-18	-13	-15	-13	-11	-9	-4	-9	-6	1	1	
	RO	-60	09-99	-9	35	06-96	-7	-7	-6	-13	-17	-6	-6	-8	-12	-16	-15	-18	
ORDER BOOKS	BG	-74	10-00	-43	-20	12-04	-31	-31	-33	-32	-30	-29	-23	-20	-21	-26	-24	-22	
	RO	-89	09-99	-11	64	03-98	-22	-18	-18	-27	-25	-23	-20	-23	-24	-26	-31	-32	
EMPLOYMENT EXPECTATIONS	BG	-50	01-93	-14	27	03-05	-2	-6	8	3	4	7	6	11	4	14	27	24	
	RO	-39	06-97	-7	38	03-01	8	4	5	1	-10	10	7	7	1	-5	1	-4	

(a) The confidence indicator is the average of both components.