

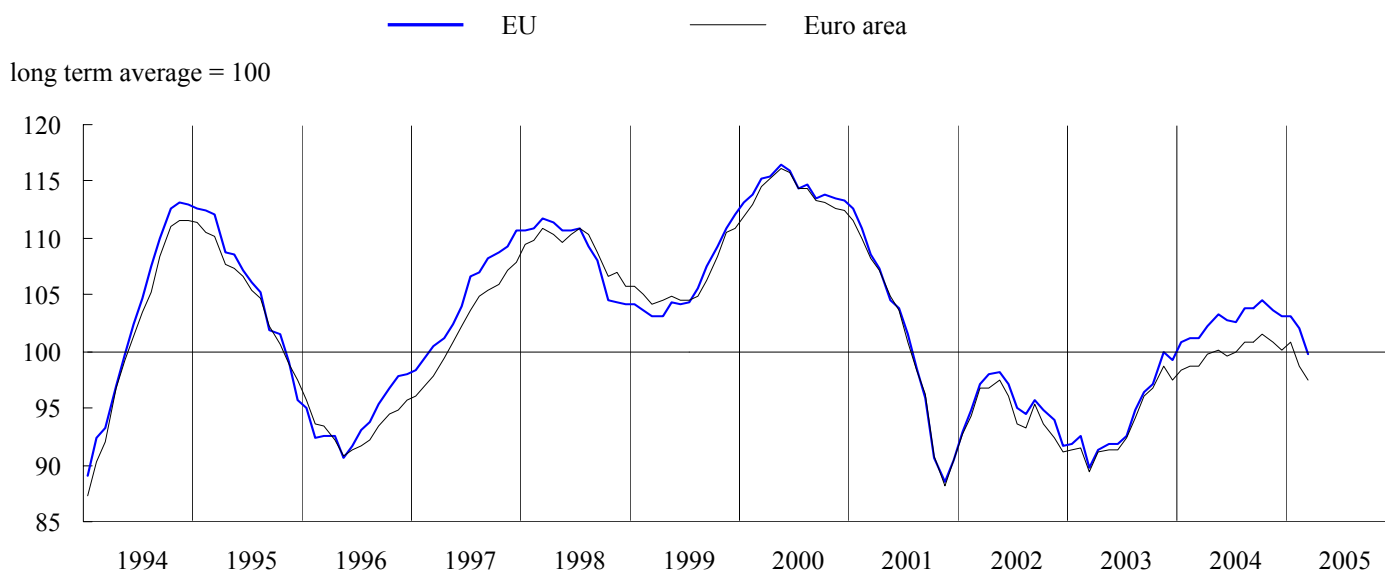


## BUSINESS AND CONSUMER SURVEY RESULTS

March 2005

Next publication of Business and Consumer Survey Results scheduled for 29 April 2005  
[http://europa.eu.int/comm/economy\\_finance/indicators/businessandconsumersurveys\\_en.htm](http://europa.eu.int/comm/economy_finance/indicators/businessandconsumersurveys_en.htm)

GRAPH 1: Economic sentiment indicator (s.a.)



### Economic sentiment declined in both the EU and the euro area

The *economic sentiment indicator (ESI)* for the *EU* showed a marked fall of 2.4 points in March, following its decline by 1.1 points in February. For the first time since December 2003 the indicator fell below its long-term average. In the euro area, where the ESI had decreased by 2 points in February, the fall in confidence was smaller, amounting to 1.4 points. For both areas the indicator has shown a nearly continuous decline since November 2004.

The fall in economic sentiment in March is due to declining confidence in industry, the services and the retail sector. The construction sector reported stable confidence for the EU and a slight improvement for the euro area. Confidence among consumers in the EU remained unchanged for the fifth month in a row, while it declined mildly for the euro area.

Among the large Member States, particularly strong deteriorations of economic sentiment were registered in the *UK* and in *Poland*. In the former country the ESI dropped by 8.8 points, thus significantly weighing on the reported EU figure. Regarding the larger euro area countries, economic sentiment declined also significantly in *Germany* and *France* and, to a minor extent, in *Italy*. Only *Spain* avoided this tendency, showing a considerable improvement. Developments in the remaining countries were mixed, with eight countries showing an improvement in economic sentiment and ten countries registering a decline.

## Industrial confidence declines in both the EU and the euro area

*Industrial confidence* declined by 2 points in both the EU and the euro area. Although the sentiment indicator is still slightly above its long term average, the continuous decline since last November is reason for concern.

The decline in the EU was reflected in all indicator components. The *production expectations* and the assessment of *order books* both fell by 2 points, while the opinions on the *stocks of finished products* worsened by 3 points. The picture is fairly similar in the euro area.

Among the larger Member States confidence fell considerably in *France* and the *UK*. Only *Spain* registered a small improvement.

A breakdown by sectors (Table 2.b) shows a considerable fall of confidence in the *consumer goods* sector. The *investment goods* sector and the *intermediate goods* sector also show a decline of confidence, but at a smaller scale.

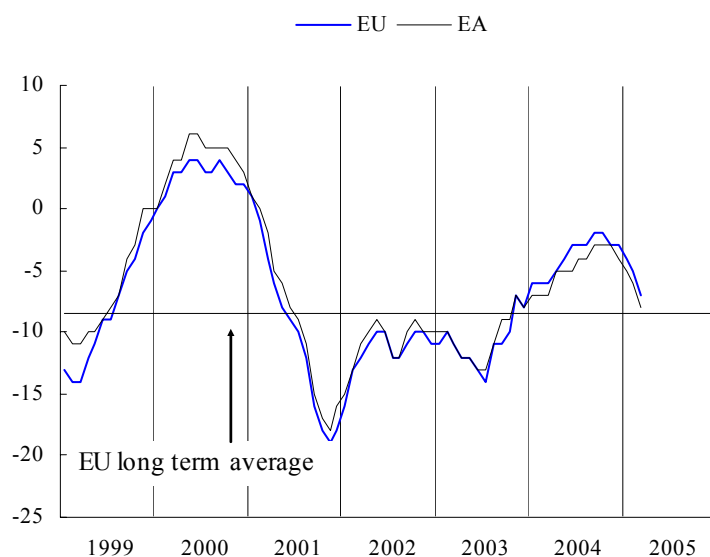
## Services confidence falls in both the EU and the euro area

*Confidence* in the *services sector* decreased in both the EU and the euro area. Especially the EU showed a pronounced fall in confidence of 4 points. The cumulative decline in the indicator since January amounts to 5 points in the EU and to 4 points in the euro area. However, the recent downward movement of the indicator is still broadly consistent with its fairly volatile development around a stable trend since the beginning of 2004.

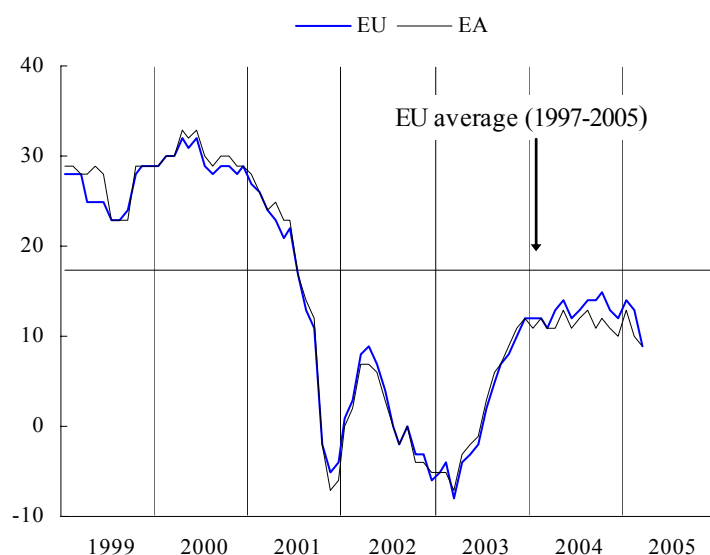
The main factor behind the recent fall of the services confidence indicator in the EU is a much more negative *assessment of the current business situation*. Together with unchanged *demand expectations* and a slightly more negative assessment of *recent demand* this had led to the rather strong fall of confidence in the EU service sector.

At country level, the developments in the *UK* are most noteworthy. Over the last few months the indicator has been rather volatile. A fall of confidence by 9 points in January was followed by an increase of 14 points in February. The March results show a downturn again, this time of no less than 21 points. This extraordinary downward revision in the *UK* is the major cause of the difference in developments between the EU and the euro area.

GRAPH 2: Industrial confidence indicator



GRAPH 3: Services confidence indicator



## Consumer confidence unchanged in the EU and slightly down in the euro area

*Consumer confidence* continued its broadly stable evolution observed over the last months. For the fifth month in a row, confidence in the EU stands at a level of -10, while in the euro area confidence has slightly fallen to a level of -14 after standing at -13 for the previous 6 months.

The stability of the confidence indicator in the EU is also reflected in the underlying components. Consumers' expectations with regard to their own *financial situation* and their *savings* remained unchanged. Their expectations about *the general economic situation* improved slightly compared to the February figure. On the other hand, consumers held slightly more pessimistic views of the *future unemployment* situation.

The results at the country level are also broadly stable. The most noticeable changes concern *Germany*, where confidence fell by 3 points, and the *UK*, where confidence increased by 3 points.

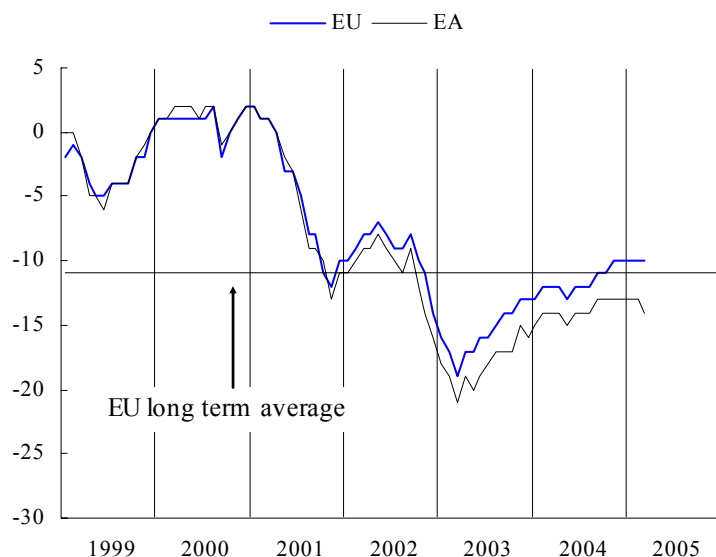
## Confidence in retail trade worsened in both the EU and euro area

The *retail trade confidence indicator* fell by 2 points in both the EU and the euro area. In the euro area, given the erratic behaviour of the indicator around a stable trend since the end of 2003, it is not yet possible to identify a clear downward tendency. By contrast, developments for the EU as a whole seem to suggest such a downward path.

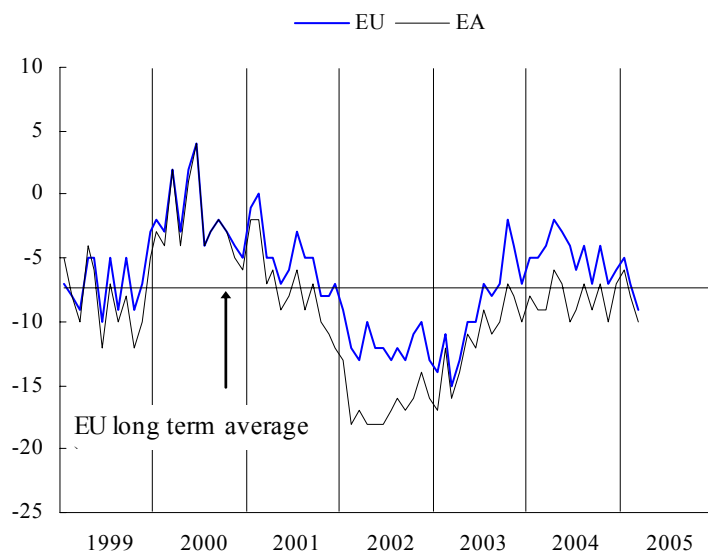
The fall in confidence in the EU resulted from more pessimistic views on all three underlying components: *Expected business situation* (-3), *present business situation* (-2) and *volume of stocks* (-1).

At the country level developments are quite diverse. *Germany* saw a significant fall in confidence of 8 points, after having already seen a drop of 5 points in February. The *UK* saw consumer confidence deteriorating for the fifth month in a row, this time by 4 points. On the positive side, in *Spain* and *France* the indicator improved by 5 and 3 points, respectively.

GRAPH 4: Consumer confidence indicator



GRAPH 5: Retail confidence indicator



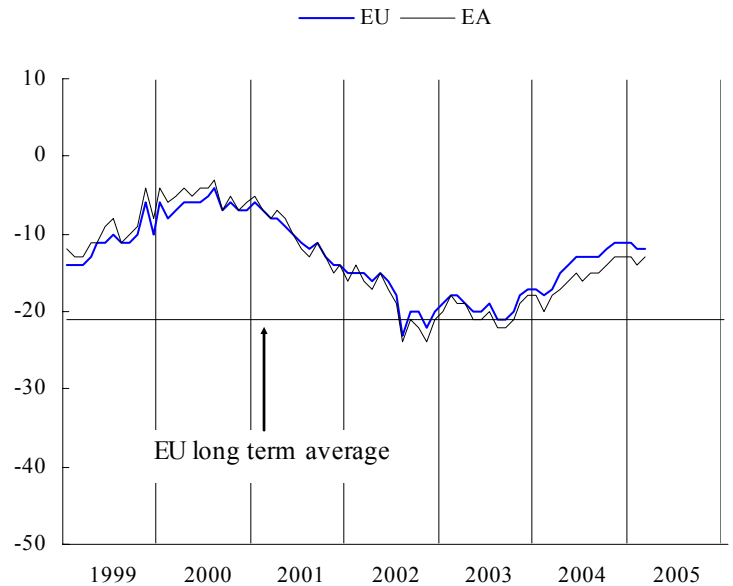
## Construction confidence unchanged in the EU and slightly up in the euro area

Compared to February, the *construction confidence indicator* remained unchanged in the EU and improved by 1 point in the euro area. After a period of slow, but sustained growth between September 2003 and November 2004, confidence in the construction sector has remained fairly stable over the last few months.

The stability in the development of the indicator is also reflected in its components. The assessment of *order books* did not change in the EU, while there was slightly more optimism with regard to the *employment expectations*.

Except for Italy, where confidence fell by 7 points, and Germany, which recorded an improvement of 4 points, there were no marked changes in confidence among the larger Member States.

GRAPH 6: Construction confidence indicator

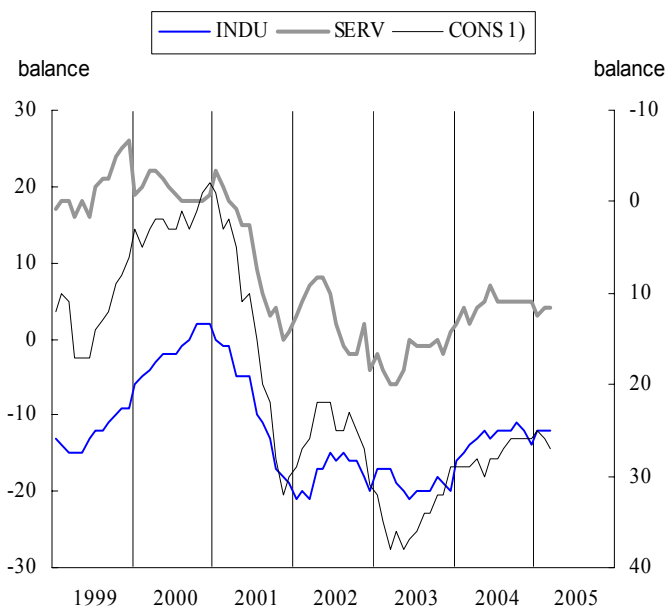


## Employment, unemployment and price expectations in the EU

Overall, *employment expectations* in the EU were rather stable. Managers in both the industry and the service sector had an unchanged view of employment developments compared with one month ago. Consumers, on the other hand, were less optimistic concerning future *unemployment*.

Regarding *price expectations*, the picture is unambiguous. Both managers in the industry and the construction sectors as well as consumers foresee downward pressure on prices.

GRAPH 7: Employment and unemployment



1) Unemployment expectations (Right Hand Scale)

GRAPH 8: Price expectations

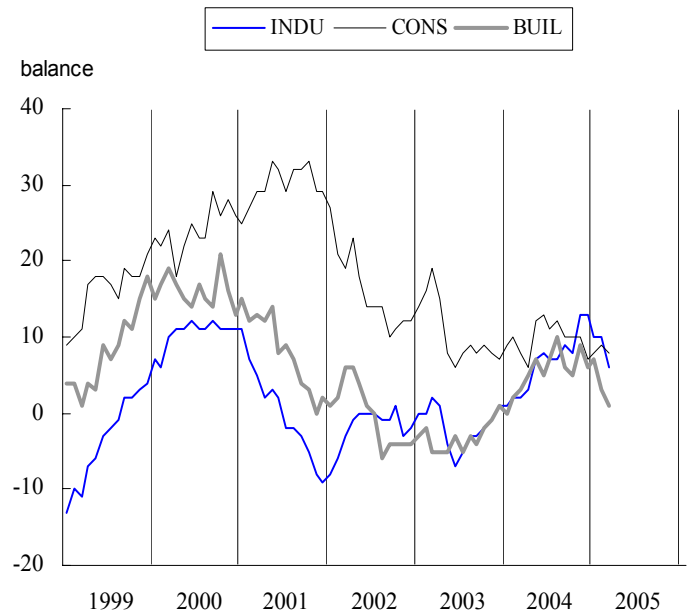


TABLE 1*: Indicators of confidence and economic sentiment(s.a.)		Since 01/1990 <sup>(1)</sup>																
							2004						2005					
		Min.		Ave.		Max.		Apr.	May	June	July	Aug.	Sep.	Oct.	Nov.	Dec.	Jan.	Feb.
	Value	Date	Value	Date	Value	Date												
EU	1. Industry	-28	07-93	-8	7	12-94	-5	-4	-3	-3	-3	-2	-2	-3	-3	-4	-5	-7
	2. Services	-8	03-03	17	32	08-98	13	14	12	13	14	14	15	13	12	14	13	9
	3. Consumer <sup>(a)</sup>	-27	03-93	-11	2	12-00	-12	-13	-12	-12	-12	-11	-11	-10	-10	-10	-10	-10
	4. Retail trade	-19	12-92	-7	4	07-90	-3	-3	-4	-6	-4	-7	-4	-8	-6	-5	-7	-9
	5. Construction	-42	10-93	-21	3	02-90	-15	-14	-13	-13	-13	-13	-12	-11	-11	-11	-12	-12
	=6. ESI <sup>(a)</sup>	76.6	07-93	100.0	116.4	05-00	102.2	103.3	102.8	102.6	103.8	103.8	104.6	103.6	103.1	103.2	102.1	99.7
Euro area	1. Industry	-31	06-93	-8	6	05-00	-5	-5	-5	-4	-4	-3	-3	-3	-4	-5	-6	-8
	2. Services	-7	03-03	18	34	08-98	11	13	11	12	13	11	12	11	10	13	10	9
	3. Consumer <sup>(a)</sup>	-29	07-93	-12	2	04-00	-14	-15	-14	-14	-14	-13	-13	-13	-13	-13	-13	-14
	4. Retail trade	-21	03-93	-9	8	08-90	-6	-7	-10	-9	-7	-9	-7	-10	-7	-6	-8	-10
	5. Construction	-44	08-96	-21	4	02-90	-17	-16	-15	-16	-15	-15	-14	-14	-13	-13	-14	-13
	=6. ESI <sup>(a)</sup>	75.8	07-93	100.0	116.1	05-00	99.8	100.2	99.6	100.0	100.9	100.9	101.5	100.9	100.2	100.8	98.8	97.4
BE	1. Industry	-33	04-93	-11	5	06-00	-3	-3	-5	3	-1	0	0	-2	-5	-3	-6	-7
	2. Services	-7	03-03	13	33	03-98	12	10	12	18	8	15	17	10	11	15	14	11
	3. Consumer	-27	08-93	-6	17	12-00	-4	-6	-1	-4	-2	-2	-2	-4	-4	-6	-3	-1
	4. Retail trade	-25	05-93	-6	13	04-90	3	-1	-2	-5	-3	1	-1	-3	-2	1	-2	-10
	5. Construction	-35	11-95	-12	10	02-00	-10	-8	-8	-9	-9	-5	-5	-4	-9	-6	-6	-4
	=6. ESI	77.0	04-93	100.0	120.2	06-00	106.7	105.2	106.1	111.2	106.1	109.7	110.0	106.3	105.1	107.5	106.6	104.3
CZ	1. Industry	-31	03-99	-1	27	06-00	7	5	11	9	10	10	12	12	11	7	8	7
	2. Services <sup>(n)</sup>	30	01-05	40	52	07-02	42	45	45	45	43	40	38	39	35	30	38	36
	3. Consumer	-36	03-98	-16	1	04-01	-20	-15	-13	-10	-10	-12	-11	-10	-5	-4	-5	-2
	4. Retail trade	-1	02-99	14	26	08-02	15	16	18	20	15	25	25	23	17	17	20	19
	5. Construction	-64	06-99	-18	3	06-95	-6	0	2	-5	-5	-10	-9	-5	1	3	-4	-7
	=6. ESI	69.7	03-99	100.0	117.6	04-01	103.6	107.2	112.2	111.8	109.3	106.3	107.3	109.4	106.2	102.0	107.7	106.2
DK	1. Industry	-26	12-98	-2	16	09-94	4	4	8	11	6	3	3	-3	2	3	1	1
	2. Services	11	10-01	25	37	12-04	37	32	29	28	28	30	35	33	37	34	33	34
	3. Consumer	-11	10-90	6	17	02-95	11	10	11	11	11	13	11	13	14	14	16	17
	4. Retail trade	-6	10-01	17	37	11-94	27	19	20	20	24	24	28	26	29	28	28	31
	5. Construction	-37	12-91	-9	19	03-98	-7	-4	-6	-6	-5	-2	-2	2	4	2	4	3
	=6. ESI	74.5	12-98	100.0	121.2	09-94	115.6	111.9	112.8	113.6	110.7	110.7	113.3	111.0	115.9	114.7	114.0	114.8
DE	1. Industry	-35	04-93	-11	11	09-90	-8	-9	-10	-9	-8	-7	-6	-6	-6	-6	-9	-11
	2. Services	-23	12-02	25	52	03-99	14	17	11	12	13	12	11	11	8	11	6	5
	3. Consumer	-28	10-93	-11	6	05-00	-17	-18	-15	-17	-18	-15	-18	-17	-16	-12	-15	-18
	4. Retail trade	-44	01-03	-18	21	02-91	-22	-21	-28	-27	-23	-28	-23	-27	-19	-17	-22	-30
	5. Construction	-62	11-02	-36	3	01-91	-49	-48	-48	-49	-53	-52	-54	-53	-55	-50	-55	-51
	=6. ESI	80.5	07-93	100.0	120.2	09-90	96.7	97.0	95.7	95.4	96.5	97.0	97.1	97.1	96.8	98.4	95.5	93.7
EE	1. Industry	-31	07-92	4	19	03-01	14	18	17	10	10	12	7	5	6	12	15	17
	2. Services <sup>(n)</sup>	-6	12-04	22	43	05-04	37	43	31	26	20	14	13	-5	-6	-3	14	23
	3. Consumer	-56	04-93	-24	0	03-03	-16	-21	-18	-14	-14	-11	-11	-7	-11	-12	-10	-5
	4. Retail trade <sup>(n)</sup>	-37	03-99	6	37	05-04	34	37	30	22	23	21	22	20	0	4	18	22
	5. Construction <sup>(n)</sup>	-46	03-99	1	32	07-02	16	27	27	22	21	20	12	6	8	13	20	27
	=6. ESI	70.9	07-92	100.0	117.7	05-04	111.8	117.7	114.2	109.2	105.1	103.0	100.6	91.6	92.3	95.4	101.3	107.9
EL	1. Industry	-12	09-90	1	13	03-00	9	7	4	0	-1	-3	-4	-4	-4	-3	-4	-7
	2. Services	-14	04-03	27	62	08-00	28	26	24	24	16	7	13	11	6	20	18	23
	3. Consumer	-44	07-03	-30	-6	04-00	-18	-22	-23	-26	-28	-26	-25	-27	-28	-32	-32	-33
	4. Retail trade	-24	06-95	1	27	03-04	22	20	17	15	16	18	14	9	8	13	5	9
	5. Construction	-53	03-05	-11	33	04-00	-4	-6	-13	-24	-35	-45	-37	-47	-49	-44	-48	-53
	=6. ESI	78.9	09-90	100.0	128.1	07-00	115.5	110.7	106.9	101.8	97.4	93.8	94.6	92.2	91.5	94.2	92.3	90.0
ES	1. Industry	-44	01-93	-9	7	04-00	-1	-1	-4	-3	-3	-2	-2	-1	-4	-1	-5	-4
	2. Services	10	10-04	31	56	06-98	22	26	22	16	16	17	10	13	16	15	12	14
	3. Consumer	-37	10-92	-10	6	03-00	-8	-9	-11	-11	-11	-13	-11	-10	-9	-9	-10	-10
	4. Retail trade	-36	02-93	-7	10	06-00	3	-6	-5	-6	-9	-10	-11	-11	-10	-10	-12	-7
	5. Construction	-57	10-92	-3	42	01-99	10	7	7	5	25	18	26	22	24	17	26	28
	=6. ESI	69.9	01-93	100.0	116.7	04-00	102.2	103.5	99.8	97.3	97.3	98.2	95.4	97.4	97.7	98.4	95.3	97.6
FR	1. Industry	-41	06-93	-8	15	06-00	-4	-3	-1	-2	-2	-1	-1	-3	-1	-5	-5	-9
	2. Services <sup>(a)</sup>	-22	06-93	3	25	06-90	4	3	6	10	9	9	12	10	11	11	9	7
	3. Consumer <sup>(a)</sup>	-34	08-93	-18	4	01-01	-14	-17	-18	-15	-13	-11	-11	-13	-13	-17	-14	-14
	4. Retail trade	-37	04-97	-16	6	10-04	-4	-2	-3	-2	0	1	6	-1	1	-2	-3	0
	5. Construction	-60	03-93	-17	34	10-00	5	5	2	1	3	6	5	7	8	11	11	12
	=6. ESI <sup>(a)</sup>	75.1	06-93	100.0	119.1	04-00	106.0	105.2	106.4	107.6	108.4	109.7	110.5	108.4	109.4	105.9	106.2	104.7
IE	1. Industry	-23	11-01	-2	21	11-99	1	3	5	1	-13	-5	-4	-9	-7	-12	1	0
	2. Services	-14	05-03	17	44	08-98	-1	2	-7	7	4	-12	-4	-10	4	-2	-9	-4
	3. Consumer	-31	03-93	-5	19	01-00	-6	-6	-6	3	3	6	9	2	8	7	4	7
	4. Retail trade	-21	05-03	4	24	06-00	-6	-3	-3	2	0	-3	1	-7	-1	-4	-8	-3
	5. Construction	-54	09-02	10	58	06-97	26	17	30	36	39	36	33	28	27	13	12	27
	=6. ESI	79.2	06-93	100.0	122.4	11-99	97.1	99.2	98.4	103.0	93.2	95.0	96.5	90.9	95.8	91.7	96.1	98.2
IT	1. Industry	-22	04-93	-4	13	07-95	-2	-4	-3	-1	-1	0	1	-1	-2	-2	-6	-7
	2. Services	-5	11-01	17	44	02-98	7	13	15	15	17	11	17	13	10	19	13	16
	3. Consumer	-38	04-93	-13	2	06-01	-18	-19	-19	-20	-20	-20	-18	-14	-16	-16	-18	-18
	4. Retail trade	-19	10-96	8	39	10-95	12	5	6	11	15	9	6	7	5	10	14	12
	5. Construction	-68	10-93	-14	21	05-90	-8	-5	10	13	3	2	2	5	4	6	2	-5
	=6. ESI	73.0	04-93	100.0	118.9	02-95	97.4	98.2	99.2	99.8	100.2	99.2	102.1	101.2	97.6	100.3	96.6	96.3
CY	1. Industry	-9	04-03	3	13	04-02	5	5	5	10	10	6	8	1	10	4	3	6
	2. Services <sup>(n)</sup>	-16	02-03	4	25	10-04	16	14	11	8	9	22	25	12	7	4	8	13

TABLE 1\* (continued) : Indicators of confidence and economic sentiment (s.a.)

		Since 01/1990 <sup>(*)</sup>					2004								2005				
		Min.		Ave.		Max.		Apr.	May	June	July	Aug.	Sep.	Oct.	Nov.	Dec.	Jan.	Feb.	Mar.
		Value	Date	Value	Date	Value	Date												
<b>LT</b>	1. Industry	-37	11-98	-15	1	07-04	-4	-3	-4	1	-5	-3	-1	-3	-12	-9	-7	-3	
	2. Services <sup>(n)</sup>	5	11-04	17	40	04-03	30	23	15	14	14	23	20	5	15	14	8	20	
	3. Consumer	-33	05-01	-15	-2	10-04	-13	-13	-8	-7	-7	-3	-2	-2	-3	-5	-4	-5	
	4. Retail trade	-25	09-00	-5	26	06-04	25	23	26	11	9	11	13	11	11	5	10	-5	
	5. Construction	-76	09-00	-43	-2	03-05	-17	-14	-16	-21	-21	-12	-11	-9	-11	-10	-5	-2	
	=6. ESI	74.8	11-98	100.0	125.0	10-04	122.5	118.3	117.5	119.8	115.2	124.2	125.0	116.1	115.2	114.0	114.0	120.4	
<b>LU</b>	1. Industry	-35	05-92	-10	26	04-95	-4	6	11	14	18	17	8	-1	-7	-1	-6	2	
	2. Services	:	:	:	:	:	:	:	:	:	:	:	:	:	:	:	:	:	
	3. Consumer <sup>(n)</sup>	-5	11-02	4	14	02-02	-1	1	5	5	4	7	5	4	6	4	1	2	
	4. Retail trade	:	:	:	:	:	:	:	:	:	:	:	:	:	:	:	:	:	
	5. Construction	-73	03-94	-26	24	03-90	-47	-43	-37	-30	-28	-34	-19	-16	-10	-12	-22	-29	
	=6. ESI	82.9	06-96	100.0	123.1	04-95	99.5	105.4	109.5	110.7	112.3	113.2	107.8	107.2	103.6	105.3	100.5	106.5	
<b>HU</b>	1. Industry	-15	05-99	-3	8	12-97	3	-6	0	-5	-2	-3	-5	-11	-5	-7	-12	-12	
	2. Services <sup>(n)</sup>	-10	11-04	1	14	03-02	4	5	1	1	-3	-6	-9	-10	-7	-7	0	-5	
	3. Consumer	-58	04-95	-29	0	08-02	-31	-28	-24	-25	-26	-24	-24	-25	-23	-21	-21	-24	
	4. Retail trade	-28	03-05	-7	9	11-97	-7	-6	-9	-10	-12	-14	-19	-23	-24	-20	-20	-28	
	5. Construction	-24	12-04	-7	11	09-98	-11	-10	-5	-11	-8	-10	-16	-20	-24	-19	-20	-17	
	=6. ESI	72.9	11-04	100.0	123.5	04-98	102.5	99.4	100.8	96.7	89.2	89.8	79.7	72.9	82.1	82.7	83.1	75.2	
<b>NL</b>	1. Industry	-12	05-93	-2	6	10-00	-4	-1	0	-1	-2	-2	-1	-2	-3	-2	-2	-1	
	2. Services	3	06-03	17	35	12-97	6	7	4	5	8	10	8	7	8	7	11	7	
	3. Consumer	-19	07-93	4	31	03-00	-8	-10	-6	-3	1	1	-3	-3	-8	-4	-4	-3	
	4. Retail trade	-16	12-03	13	30	10-99	-10	-10	-10	-11	-6	-5	-3	-9	-10	-7	-10	-6	
	5. Construction	-25	05-03	-3	27	12-00	-15	-17	-17	-16	-14	-12	-7	-7	-7	-6	-5	-2	
	=6. ESI	79.0	05-93	100.0	117.5	12-97	91.4	94.6	95.5	94.3	95.4	96.5	95.5	94.0	91.4	93.1	94.8	94.7	
<b>AT</b>	1. Industry	-30	06-93	-12	8	03-90	-9	-9	-8	-7	-7	-7	-6	-6	-8	-7	-9	-11	
	2. Services	0	01-02	16	30	03-98	16	16	15	16	19	17	19	16	16	13	12	9	
	3. Consumer	-16	04-96	-1	11	07-00	-3	-5	-2	-1	-2	-3	-1	-3	-3	1	-3	-2	
	4. Retail trade	-29	03-03	-13	4	07-00	-2	-5	-13	-12	-14	-8	-14	-18	-12	-15	-14	-10	
	5. Construction	-60	04-96	-30	-13	02-03	-23	-23	-29	-25	-24	-25	-23	-21	-16	-25	-22	-24	
	=6. ESI	71.6	04-96	100.0	119.8	05-00	105.8	105.1	104.8	107.2	107.6	106.9	108.8	105.8	105.7	104.9	101.7	98.5	
<b>PL</b>	1. Industry	-29	10-01	-14	9	09-97	-7	-9	-6	-5	-7	-8	-9	-10	-10	-11	-11	-11	
	2. Services <sup>(n)</sup>	-8	03-03	0	8	02-05	2	1	4	-4	6	2	3	3	1	7	8	5	
	3. Consumer	-41	05-01	-31	-18	03-05	-30	-25	-23	-26	-21	-24	-24	-22	-19	-20	-19	-18	
	4. Retail trade	-19	01-02	-6	7	07-98	-6	-4	-4	-6	-9	-9	-9	-10	-8	-2	-6	-7	
	5. Construction	-63	12-02	-44	-22	03-98	-43	-42	-40	-37	-37	-38	-32	-33	-39	-29	-32	-30	
	=6. ESI	75.8	02-99	100.0	142.8	02-05	119.5	119.6	132.4	108.6	136.6	123.8	124.8	125.1	124.0	137.2	142.8	137.0	
<b>PT</b>	1. Industry <sup>(b)</sup>	-28	06-93	-7	7	03-98	-11	-9	-7	-7	-6	-8	-8	-7	-11	-9	-11	-10	
	2. Services	-17	05-03	8	29	06-01	10	6	3	5	7	4	4	12	0	-2	5	-3	
	3. Consumer <sup>(b)</sup>	-49	03-03	-22	-1	07-91	-38	-35	-31	-31	-32	-32	-34	-34	-36	-35	-34	-31	
	4. Retail trade <sup>(b)</sup>	-27	01-03	-7	4	01-99	-10	-7	-10	-6	-8	-5	-8	-11	-7	-7	-10	-7	
	5. Construction	-56	02-03	-26	-1	12-97	-41	-42	-42	-44	-40	-41	-38	-34	-32	-33	-40	-34	
	=6. ESI <sup>(b)</sup>	73.9	06-93	100.0	113.6	05-97	94.3	95.0	93.9	94.9	95.8	97.4	94.1	97.9	92.2	90.2	92.0	91.2	
<b>SI</b>	1. Industry	-21	03-99	-3	18	06-00	6	3	2	4	5	6	6	3	1	0	-2	0	
	2. Services <sup>(n)</sup>	12	03-05	25	34	10-02	29	26	27	21	25	21	23	23	20	20	22	12	
	3. Consumer	-29	06-99	-19	-9	10-04	-22	-19	-19	-18	-15	-17	-9	-14	-18	-20	-13	-15	
	4. Retail trade	3	01-01	11	23	04-99	12	14	13	11	13	10	12	13	14	13	10	8	
	5. Construction <sup>(n)</sup>	-28	05-02	-8	8	07-04	5	-2	8	8	7	5	-2	-5	-10	6	-3	-3	
	=6. ESI	76.8	03-99	100.0	131.4	06-00	108.9	107.1	107.4	104.2	110.5	105.9	113.5	106.8	101.0	100.5	102.7	94.4	
<b>SK</b>	1. Industry	-22	12-95	5	26	05-96	12	6	6	2	11	15	11	13	2	9	13	12	
	2. Services <sup>(n)</sup>	27	03-05	49	61	11-02	52	51	38	40	48	56	50	56	50	29	40	27	
	3. Consumer	-50	08-99	-32	-12	12-04	-26	-26	-22	-22	-22	-25	-25	-16	-12	-13	-13	-13	
	4. Retail trade	-17	10-93	7	34	11-98	11	14	13	10	-2	5	0	3	-7	8	5	12	
	5. Construction	-86	07-99	-29	18	03-97	-27	-22	-16	-18	-15	-14	-13	-23	-20	-12	-17	-13	
	=6. ESI	71.4	03-99	100.0	125.3	05-96	108.9	105.1	100.1	96.9	107.3	113.5	107.5	117.3	108.6	100.5	108.9	100.9	
<b>FI</b>	1. Industry	-24	01-93	2	30	10-94	1	-1	11	11	10	8	5	5	3	4	6		
	2. Services	-12	09-03	25	61	09-00	8	-3	-1	18	16	23	31	31	30	38	33	32	
	3. Consumer	6	11-01	15	23	02-00	13	14	15	12	17	15	14	14	16	13	16	17	
	4. Retail trade	-17	11-00	-4	10	05-04	6	10	0	2	-4	-3	1	-6	4	-1	-8	-4	
	5. Construction	-97	09-91	-19	48	06-98	0	7	-1	0	2	-1	0	-4	4	-7	12	16	
	=6. ESI	74.6	04-91	100.0	120.7	11-94	100.4	99.7	102.8	106.5	105.7	106.7	106.4	105.5	106.6	106.4	105.8	107.1	
<b>SE</b>	1. Industry	-29	10-01	-5	15	05-00	1	3	6	8	4	8	5	4	6	0	-7		
	2. Services	-24	01-03	16	46	12-00	17	24	29	28	26	29	36	29	23	40	30	32	
	3. Consumer	-10	09-96	8	25	03-00	6	6	6	4	6	6	8	7	10	8	8	7	
	4. Retail trade	-8	09-01	6	27	04-00	5	4	6	0	6	1	0	-3	0	0	2	0	
	5. Construction	-83	12-93	-39	25	01-01	-33	-28	-21	-9	-18	-6	-1	4	14	10	3	-3	
	=6. ESI	79.0	10-01	100.0	127.1	03-00	105.5	108.3	110.6	111.7	110.8	113.2	115.0	111.2	110.0	115.1	110.1	107.1	
<b>UK</b>	1. Industry	-40	02-91	-11	11	02-95	-8	3	0	-4	2	-1	0	-4	-3	-4	0	-5	
	2. Services	-20	12-02	15	37	10-97	16	17	16	16	19	27	25	19	19	10	24	3	
	3. Consumer	-28	10-92	-8	7	10-97	-2	-5	-5	-3	-4	-3	-2	0	0	0	0	3	
	4. Retail trade	-27	09-92	-4	20	06-04	9	15	20	5	5	-3	4	0	-3	-5	-9	-13	
	5. Construction	-79	06-91	-20	5	08-04	1	2	3	4	5	3	-3	1	-1	-2	-3	-2	
	=6. ESI	71.1	02-91	100.0	118.4	12-97	106.5	112.8	111.5	108.0	110.9	111.8	112.6	110.3	111.2	108.0	113.5	104.7	

In the tables: (s.a.) = seasonally adjusted, (n) = not seasonally adjusted, : = not available.

(\*) Minimum, maximum and averages are calculated over the period of availability which is not necessarily 01/1990.

The economic sentiment indicator is composed of the industrial confidence indicator (40%), the service confidence indicator (30%), the consumer confidence indicator (20%), the construction confidence indicator (5%), and the retail trade confidence indicator (5%). Its long term average (1990-2003) equals 100.

The reported ESI average is based on this standardisation sample. All confidence indicators are balances.

(a) The French consumer and service questionnaire were modified in January 2004, in order to bring it into line with the EU harmonised programme. The series prior to and after this date are therefore not completely comparable. However, the breaks in French data series have a moderate impact on the European aggregates.

(b) The Portuguese series were revised due to a sample change. (see notes to tables 2, 4

TABLE 2a: Monthly survey of manufacturing industry (s.a.)<sup>(a)</sup>

		Since 01/1990						2004						2005					
		Min.		Ave.		Max.		Apr.	May	June	July	Aug.	Sep.	Oct.	Nov.	Dec.	Jan.	Feb.	Mar.
		Value	Date	Value	Date	Value	Date												
INDUSTRIAL CONFIDENCE INDICATOR	EU	-28	07-93	-8	7	12-94	-5	-4	-3	-3	-3	-2	-2	-3	-3	-4	-5	-8	
	Euro area	-31	06-93	-8	6	05-00	-5	-5	-5	-4	-4	-3	-3	-3	-4	-5	-6	-7	
	BE	-33	04-93	-11	5	06-00	-3	-3	-5	3	-1	0	0	-2	-5	-3	-6	-7	
	CZ	-31	03-99	-1	27	06-00	7	5	11	9	10	10	12	12	11	7	8	7	
	DK	-26	12-98	-2	16	09-94	4	4	8	11	6	3	3	-3	2	3	1	1	
	DE	-35	04-93	-11	11	09-90	8	-9	-10	-9	-8	-7	-6	-6	-6	-6	-9	-11	
	EE	-31	07-92	4	19	03-01	14	18	17	10	10	12	7	5	6	12	15	17	
	EL	-12	09-90	1	13	03-00	9	7	4	0	-1	-3	-4	-4	-4	-3	-4	-7	
	ES	-44	01-93	-9	7	04-00	-1	-1	-4	-3	-3	-2	-2	-1	-4	-1	-5	-4	
	FR	-41	06-93	-8	15	06-00	-4	-3	-1	-2	-2	-1	-1	-3	-1	-5	-5	-9	
	IE	-23	11-01	-2	21	11-99	1	3	5	1	-13	-5	-4	-9	-7	-12	1	0	
	IT	-22	04-93	-4	13	07-95	-2	-4	-3	-1	-1	0	1	-1	-2	-2	-6	-7	
	CY	-9	04-03	3	13	04-02	5	5	5	10	10	6	8	1	10	4	3	6	
	LV	-45	04-93	-11	7	05-04	5	7	4	3	3	4	3	3	2	2	3	3	
	LT	-37	11-98	-15	1	07-04	-4	-3	-4	1	-5	-3	-1	-3	-12	-9	-7	-3	
	LU	-35	05-92	-10	26	04-95	-4	6	11	14	18	17	8	-1	-7	-1	-6	2	
	HU	-15	05-99	-3	8	12-97	3	-6	0	-5	-2	-3	-5	-11	-5	-7	-12	-12	
	NL	-12	05-93	-2	6	10-00	-4	-1	0	-1	-2	-2	-1	-2	-3	-2	-2	-1	
	AT	-30	06-93	-12	8	03-90	-9	-9	-8	-7	-7	-7	-6	-6	-8	-7	-9	-11	
	PL	-29	10-01	-14	9	09-97	-7	-9	-6	-5	-7	-8	-9	-10	-10	-11	-11	-11	
	PT <sup>(e)</sup>	-28	06-93	-7	7	03-98	-11	-9	-7	-7	-6	-8	-8	-7	-11	-9	-11	-10	
	SI	-21	03-99	-3	18	06-00	6	3	2	4	5	6	6	3	1	0	-2	0	
	SK	-22	12-95	5	26	05-96	12	6	6	2	11	15	11	13	2	9	13	12	
	FI	-24	01-93	2	30	10-94	1	-1	11	11	10	8	5	5	5	3	4	6	
	SE	-29	10-01	-5	15	05-00	1	3	6	8	4	8	5	5	4	6	0	-7	
	UK	-40	02-91	-11	11	02-95	-8	3	0	-4	2	-1	0	-4	-3	-4	0	-5	
	PRODUCTION EXPECTATIONS	EU	-16	11-92	6	23	12-94	12	13	13	10	11	13	13	12	10	9	9	7
Euro area		-18	12-92	5	21	12-94	11	10	10	8	8	11	11	10	9	7	6	5	
Component of the industrial confidence indicator	BE	-36	04-93	-3	16	12-94	8	4	2	9	8	7	8	6	2	0	0	3	
	CZ	-26	05-93	22	61	05-95	25	25	28	22	21	30	34	33	28	19	22	24	
	DK	-23	12-98	10	30	02-98	18	8	16	21	17	9	11	10	16	14	10	17	
	DE	-26	11-92	1	20	12-94	7	6	4	3	3	6	7	5	2	2	2	0	
	EE	-70	04-92	19	68	03-02	21	29	25	19	20	17	20	13	19	24	37	38	
	EL	3	02-91	26	44	02-00	31	31	23	18	16	14	20	20	23	22	23	19	
	ES	-19	01-93	5	17	12-00	16	16	7	6	3	13	8	12	7	9	3	9	
	FR	-30	07-93	6	27	10-00	13	12	14	11	12	14	11	11	16	9	9	5	
	IE	-22	11-01	9	35	11-99	23	20	16	12	-2	-10	1	-4	3	-10	24	1	
	IT	-12	12-92	14	31	12-94	13	14	16	12	18	17	19	18	16	14	14	10	
	CY	1	11-01	13	35	12-04	3	8	12	14	17	15	14	17	35	9	5	18	
	LV	-21	04-93	15	41	03-02	17	22	16	18	20	21	19	21	21	18	19	19	
	LT	-22	04-94	11	35	08-97	19	16	21	21	21	21	19	22	8	6	6	16	
	LU	-42	10-91	-4	28	04-95	16	22	16	27	24	23	15	6	-2	16	14	15	
	HU	-6	03-05	13	34	12-97	16	1	10	1	10	12	2	-5	7	6	-3	-6	
	NL	-4	04-93	6	15	11-99	3	8	8	3	-1	4	5	5	2	2	5	8	
	AT	-19	06-93	4	18	11-03	8	7	9	7	10	9	13	11	6	9	6	11	
	PL	-4	10-01	21	44	02-03	24	19	26	24	26	20	21	17	17	16	17	17	
	PT <sup>(e)</sup>	-11	03-93	5	21	01-97	-5	4	4	1	0	2	0	4	0	-5	-3	0	
	SI	10	10-01	23	42	06-00	29	25	28	28	39	40	38	24	28	30	26	29	
	SK	-12	12-95	31	62	12-97	50	40	47	4	38	53	43	46	6	15	38	36	
	FI	-26	06-91	13	44	07-04	19	18	44	44	33	34	28	35	28	27	20	30	
	SE	-19	05-91	15	46	05-00	30	31	38	35	28	37	29	30	35	38	23	9	
	UK	-38	02-91	6	33	02-95	8	21	16	7	18	14	18	13	3	8	16	9	
	ORDER BOOKS	EU	-50	07-93	-20	1	02-95	-17	-16	-15	-12	-12	-12	-11	-13	-11	-12	-15	-17
		Euro area	-55	07-93	-19	5	06-00	-16	-18	-16	-12	-13	-12	-11	-12	-12	-11	-15	-17
	Component of the industrial confidence indicator	BE	-51	05-93	-20	11	06-00	-15	-13	-11	-4	-9	-7	-6	-9	-11	-9	-18	-17
CZ		-50	12-98	-7	30	01-01	-1	-2	4	5	5	5	4	5	3	3	-3		
DK		-41	04-99	-6	32	12-94	2	4	9	10	6	6	4	-10	-2	2	-3	-5	
DE		-61	07-93	-24	12	07-90	-21	-24	-22	-19	-19	-17	-16	-15	-12	-13	-17	-19	
EE		-43	10-92	0	29	06-01	12	15	13	1	4	10	-2	1	2	7	5	10	
EL		-30	12-93	-13	7	05-98	0	-3	-5	-9	-10	-12	-17	-18	-20	-17	-21	-24	
ES		-65	01-93	-16	11	07-98	-7	-9	-9	-5	-4	-4	-1	-2	-7	-3	-8	-10	
FR		-64	06-93	-16	27	06-00	-13	-14	-11	-10	-10	-12	-11	-13	-14	-12	-14	-19	
IE		-36	06-93	-7	24	12-99	-15	-9	-4	-22	-32	-8	-6	-12	-10	-13	-14	2	
IT		-47	06-93	-16	13	02-95	-14	-19	-17	-9	-13	-10	-12	-12	-11	-12	-21	-20	
CY		-39	02-03	-20	-3	10-03	-6	-10	-11	-3	-9	-8	-7	-13	-12	-8	-12	-6	
LV		-79	07-93	-41	-7	12-03	-13	-10	-13	-16	-15	-14	-17	-17	-19	-18	-16	-14	
LT		-79	11-98	-43	-9	11-93	-28	-24	-26	-20	-34	-29	-22	-27	-40	-29	-25	-24	
LU		-64	02-92	-18	34	12-97	-24	-7	10	9	19	18	11	-4	-7	-12	-20	-11	
HU		-40	03-03	-19	0	04-98	-6	-16	-15	-15	-15	-15	-15	-20	-20	-24	-28	-23	
NL		-25	01-93	-8	6	11-00	-9	-7	-6	-4	-3	-6	-5	-6	-6	-4	-4	-5	
AT		-57	04-96	-25	11	03-90	-27	-27	-26	-23	-24	-23	-21	-22	-23	-25	-27	-32	
PL		-77	01-02	-58	8	09-97	-44	-45	-46	-41	-47	-42	-45	-43	-46	-47	-48	-47	
PT <sup>(e)</sup>		-52	07-93	-19	9	03-98	-24	-25	-16	-13	-10	-32	-19	-19	-29	-15	-21	-24	
SI		-51	03-99	-19	12	06-00	-6	-11	-13	-10	-13	-7	-9	-7	-11	-14	-19	-14	
SK		-70	03-99	-8	49	09-94	-20	-24	-28	0	-2	-6	-4	0	4	10	5	3	
FI		-70	09-91	-13	40	11-94	-10	-20	-1	0	-1	-2	2	-4	2	1	6	2	
SE		-67	03-92	-23	25	12-94	-14	-11	-5	-6	-9	-6	-9	-5	-8	-7	-11	-14	
UK		-62	07-91	-22	11	02-95	-17	-4	-10	-7	0	-4	-4	-13	-5	-13	-7	-9	

TABLE 2a: (continued) Monthly survey of manufacturing industry (s.a.)<sup>(a)</sup>

		Since 01/1990						2004						2005					
		Min.		Ave.		Max.		Apr.	May	June	July	Aug.	Sep.	Oct.	Nov.	Dec.	Jan.	Feb.	Mar.
		Value	Date	Value	Date	Value	Date												
STOCKS OF FINISHED PRODUCTS <sup>(b)</sup>	EU	3	12-94	11	23	06-93	9	7	8	8	8	8	8	8	8	9	9	12	
	Euro area	2	11-94	11	24	04-93	9	7	8	8	7	8	8	8	9	9	10	12	
Component of the industrial confidence indicator	BE	-4	02-95	9	26	10-01	2	2	4	-3	1	1	3	2	5	0	1	6	
	CZ	-12	04-00	17	46	08-93	4	7	0	-1	-4	6	2	0	0	3	0	0	
	DK	-7	03-94	10	28	06-99	9	0	0	-1	5	6	6	8	9	5	3	10	
	DE	-9	09-90	10	25	07-93	11	9	11	10	8	9	8	8	9	9	11	13	
	EE	-16	05-92	7	39	06-93	-8	-11	-12	-10	-7	-10	-2	1	2	-5	-2	-4	
	EL	1	06-94	12	22	09-90	4	8	7	8	10	11	13	14	13	13	13	15	
	ES	-1	11-02	15	47	01-93	13	10	9	10	10	16	13	12	11	10	11	12	
	FR	-2	04-00	13	34	06-93	11	7	7	8	8	6	4	6	6	12	10	13	
	IE	-13	12-99	6	23	11-93	4	1	-3	-13	6	-4	6	11	12	12	7	2	
	IT	-1	07-95	8	17	10-90	6	6	7	6	8	7	5	7	10	9	10	11	
	CY	-33	09-01	-16	0	11-04	-19	-16	-15	-19	-23	-11	-18	0	-7	-12	-16	-7	
	LV	-12	03-04	8	43	07-93	-10	-9	-7	-6	-4	-5	-5	-4	-5	-6	-5	-4	
	LT	-16	01-95	13	49	01-94	3	0	8	-3	2	2	-1	3	4	3	2	1	
	LU	-22	03-95	8	31	03-02	4	-4	-8	-6	-10	-10	1	4	11	8	12	0	
	HU	-7	11-03	3	15	12-98	1	2	-4	0	1	4	4	7	2	3	4	8	
	NL	-1	12-94	5	11	06-91	6	4	3	4	2	4	4	5	4	5	5	5	
	AT	4	03-90	14	26	04-96	7	7	7	5	6	7	8	6	6	6	7	12	
	PL	-11	10-94	3	20	02-99	0	0	-2	-2	1	2	3	2	2	3	2	3	
	PT <sup>(c)</sup>	-7	09-04	8	25	06-93	3	5	11	8	8	-7	4	5	3	8	8	6	
	SI	-1	06-00	14	28	02-96	6	6	10	8	10	15	11	8	15	16	14	15	
SK	-27	02-01	9	55	05-94	-6	-2	0	-2	4	3	6	8	3	-3	4	2		
FI	-20	04-95	4	31	01-96	7	2	10	11	2	9	14	15	15	18	14	13		
SE	3	03-00	17	37	11-01	13	12	15	6	7	9	6	10	16	13	12	15		
UK	6	03-04	17	32	11-98	16	8	7	13	13	14	13	12	7	8	8	13		
PRODUCTION TREND OBSERVED IN RECENT MONTHS	EU	-23	01-93	-1	19	01-95	8	5	6	9	7	7	6	3	6	5	4	-1	
	Euro area	-26	04-93	-2	17	01-95	5	2	4	7	4	4	2	0	4	4	2	-3	
	BE	-20	02-93	-1	16	05-97	4	2	2	11	3	5	5	-6	-1	4	-4	-1	
	CZ	-32	10-98	12	42	11-00	12	14	22	31	21	11	20	22	31	24	20	8	
	DK	-21	04-99	10	41	09-94	19	19	25	21	15	13	15	12	-1	2	3	-1	
	DE	-32	02-02	-4	22	12-90	9	-4	2	6	0	-1	-5	-7	3	-1	-3	-8	
	EE	-24	03-99	13	56	06-01	37	36	34	28	28	21	15	12	10	14	9	22	
	EL	-5	10-90	14	36	01-00	13	21	24	21	18	14	6	4	5	10	6	7	
	ES	-44	04-93	0	21	04-95	3	4	4	6	11	8	9	-1	3	6	5	2	
	FR	-38	07-93	4	36	01-95	8	16	15	13	11	9	14	14	7	16	15	9	
	IE	-25	10-01	6	38	03-00	16	12	9	9	-15	22	-2	6	-17	-4	9	-3	
	IT	-36	06-93	-10	14	03-95	-11	-14	-15	-9	-6	-5	-8	-10	-6	-10	-13	-15	
	CY	-33	04-03	-11	14	04-04	14	-2	-7	-3	-2	-27	7	-15	-4	-8	-8	-6	
	LV	-49	04-93	2	29	06-01	19	18	10	9	14	10	7	7	13	10	9	11	
	LT	-36	07-94	0	34	04-98	2	24	6	14	12	2	9	11	11	7	7	-6	
	LU	-41	04-92	-2	32	04-95	10	29	22	30	30	27	12	19	21	17	12	-7	
	HU	-30	06-99	-1	27	04-98	10	8	7	9	8	2	3	-4	-6	-9	-11	-16	
	NL	-12	05-93	3	14	10-97	8	9	10	11	5	1	3	-1	2	3	-2	-1	
	AT	-28	06-93	5	27	03-90	13	15	11	17	13	21	16	16	12	14	7	4	
	PL	-18	07-96	0	23	04-04	23	9	9	14	6	6	12	6	8	21	5	-3	
	PT <sup>(c)</sup>	-18	01-93	-1	15	08-94	-5	-7	-3	8	-1	-14	-16	-9	-3	1	-5	-10	
	SI	-20	02-99	8	39	05-00	17	6	6	13	13	9	12	6	11	7	1	2	
SK	-30	12-96	16	78	12-03	44	7	8	49	27	-5	46	46	69	17	27	24		
FI	-28	06-91	11	53	12-04	24	21	28	13	32	35	34	30	53	27	42	8		
SE	-28	07-91	9	48	12-94	31	23	25	28	29	31	24	24	18	15	17	13		
UK	-46	06-91	-2	34	03-95	12	17	10	9	19	19	16	7	14	3	13	9		
EXPORT ORDER BOOKS	EU	-45	06-93	-20	1	02-95	-16	-15	-12	-9	-10	-10	-10	-11	-11	-12	-12	-15	
	Euro area	-52	06-93	-21	3	06-00	-15	-17	-13	-9	-10	-10	-10	-11	-12	-10	-12	-15	
	BE	-56	05-93	-21	7	06-00	-10	-5	-5	-4	-6	-5	-1	-4	-10	-8	-22	-20	
	CZ	-41	12-98	-3	26	09-00	-5	-4	2	3	5	5	4	1	4	1	0	-10	
	DK	-39	04-99	-4	25	09-94	8	6	10	12	7	8	2	-8	1	-1	-4	-6	
	DE	-60	08-93	-28	0	02-90	-18	-19	-17	-11	-12	-11	-11	-11	-11	-9	-8	-12	
	EE	-37	03-99	1	25	03-01	0	2	-2	0	-2	10	0	-5	-5	-1	0	-4	
	EL	-36	05-03	-15	13	03-95	-9	-9	-7	-11	-14	-18	-21	-21	-24	-17	-18	-19	
	ES	-55	01-93	-19	6	05-95	-22	-21	-16	-15	-9	-15	-10	-15	-11	-9	-15	-15	
	FR	-65	07-93	-12	36	06-00	-4	-14	-5	-1	-2	-4	-5	-7	-9	-8	-9	-12	
	IE	-53	09-93	-7	38	04-00	22	17	18	-34	-42	-20	-3	2	-8	-2	-20	-1	
	IT	-43	09-92	-18	19	02-95	-20	-21	-18	-12	-17	-12	-14	-15	-16	-15	-20	-23	
	CY	-51	05-03	-28	-4	03-05	-17	-15	-21	-12	-13	-9	-10	-11	-21	-18	-34	-4	
	LV	-59	12-98	-37	-15	12-03	-18	-19	-19	-20	-22	-20	-21	-23	-21	-21	-20	-19	
	LT	-65	04-99	-37	-14	06-01	-26	-20	-25	-20	-38	-29	-23	-32	-45	-31	-27	-31	
	LU	-75	11-91	-23	45	04-00	-40	-20	4	-4	6	5	-2	-18	-20	-25	-26	-28	
	HU	-44	12-02	-15	7	02-98	-16	-15	-19	-16	-19	-19	-22	-21	-27	-24	-30	-29	
	NL	-24	01-93	-6	11	09-00	-5	-3	-1	3	4	-1	-2	-2	-2	1	-1	-3	
	AT	-58	04-96	-34	-1	03-90	-39	-38	-33	-32	-31	-35	-34	-31	-34	-35	-37	-39	
	PL	-75	05-99	-57	13	07-97	-50	-49	-48	-47	-49	-50	-49	-50	-52	-52	-52	-54	
	PT <sup>(c)</sup>	-59	04-93	-16	22	01-95	-20	-22	-18	-18	-19	-22	-21	-17	-16	-20	-18	-22	
	SI	-53	05-99	-16	15	06-00	-9	-11	-11	-6	-5	0	0	-4	-5	-11	-13	-13	
SK	-57	03-99	-9	53	01-94	-19	-22	-25	-17	-21	-5	-5	-4	4	6	7	1		
FI	-43	01-99	-8	42	01-95	-18	-19	-7	-2	-2	-8	-2	-6	1	-3	-2	-6		
SE	-45	12-01	5	45	08-91	-3	-4	5	8	-1	8	-2	1	1	1	-7	-19		
UK	-55	10-98	-22	19	04-95	-20	-2	-10	-10	-4	-5	-11	-11	-6	-17	-8	-5		



TABLE 2a: (continued) **Monthly survey of manufacturing industry (s.a.)** <sup>(a)</sup>

		Since 01/1990						2004						2005					
		Min.		Ave.		Max.													
		Value	Date	Value	Date	Value	Date	Apr.	May	June	July	Aug.	Sep.	Oct.	Nov.	Dec.	Jan.	Feb.	Mar.
EMPLOYMENT EXPECTATIONS	<b>EU</b>	-39	06-93	-15	2	11-00	-13	-12	-13	-12	-12	-12	-11	-12	-14	-12	-12	-12	-12
	<b>Euro area</b>	-42	06-93	-14	4	11-00	-13	-13	-13	-13	-14	-13	-12	-12	-14	-14	-12	-12	-13
		<b>BE</b>	-26	09-93	-9	9	09-00	-7	-9	-6	-4	-5	-8	-8	-11	-10	-10	-8	-10
		<b>CZ</b>	-58	06-99	-26	2	03-01	-11	-8	-6	-6	-5	-4	-5	-4	-3	-5	-7	-7
		<b>DK</b>	-23	06-93	-3	13	03-98	0	3	3	5	0	-1	-4	-6	-9	0	-3	3
		<b>DE</b>	-52	06-93	-18	8	02-90	-20	-20	-17	-18	-18	-14	-15	-14	-18	-17	-17	-21
		<b>EE</b>	-78	04-92	-13	16	03-05	9	5	7	2	3	-1	-5	-1	2	8	11	16
		<b>EL</b>	-12	12-04	-2	12	05-02	2	-5	-3	2	1	1	-7	-2	-12	-8	-6	-3
		<b>ES</b>	-53	06-93	-9	9	03-01	4	6	0	-7	-11	-12	-13	-11	-9	-4	-2	-3
		<b>FR</b>	-50	09-93	-17	12	09-00	-17	-17	-17	-18	-19	-20	-15	-19	-20	-17	-18	-16
		<b>IE</b>	-34	12-92	-10	16	09-00	3	-9	-8	-22	-18	-16	-8	-21	-13	-10	-6	-5
		<b>IT</b>	-30	08-96	-4	11	11-00	-3	-4	-4	-3	-5	-3	0	0	-5	-2	-2	-3
		<b>CY</b>	-15	04-02	10	41	10-04	23	4	5	29	7	4	41	11	10	33	11	8
		<b>LV</b>	-51	04-93	-10	8	10-04	1	4	3	3	5	6	8	7	5	6	3	4
		<b>LT</b>	-59	04-94	-29	4	03-03	4	1	4	-3	-3	-1	-5	-2	-11	-12	-5	2
		<b>LU</b>	-55	12-91	-27	1	09-01	-37	-23	-23	-14	-15	-13	-23	-20	-16	-20	-19	-26
		<b>HU</b>	-60	12-91	-17	10	10-97	-11	-15	-15	-13	-7	-6	-12	-16	-10	-13	-14	-13
		<b>NL</b>	-30	06-93	-8	15	06-90	-12	-11	-12	-7	-11	-10	-12	-9	-11	-9	-9	-10
		<b>AT</b>	-29	01-96	-10	6	09-00	-4	-3	-4	-5	-3	-5	-2	-4	-4	-3	-3	-6
		<b>PL</b>	-55	12-99	-25	-4	03-05	-11	-13	-11	-11	-13	-8	-5	-7	-6	-8	-8	-4
	<b>PT<sup>(c)</sup></b>	-35	06-93	-15	-2	02-90	-21	-21	-23	-21	-19	-22	-24	-20	-23	-19	-25	-22	
	<b>SI</b>	-42	10-95	-23	-10	07-04	-15	-14	-14	-10	-13	-13	-14	-18	-19	-18	-18	-18	
	<b>SK</b>	-56	06-99	-24	2	06-96	-29	-22	-30	-22	-18	-13	-13	-12	-18	-12	-14	-16	
	<b>FI</b>	-60	06-91	-16	15	12-00	-21	-19	-28	-13	-13	-19	-18	-13	-14	-21	-6	-6	
	<b>SE</b>	-51	06-92	-19	23	12-94	-24	-16	-19	-19	-10	-11	-8	-11	-14	-16	-18	-17	
	<b>UK</b>	-50	03-91	-20	2	06-97	-10	-7	-11	-8	-3	-5	-11	-13	-12	-12	-12	-8	
SELLING-PRICE EXPECTATIONS	<b>EU</b>	-13	01-99	5	26	02-95	3	7	8	7	7	9	8	13	13	10	10	6	
	<b>Euro area</b>	-11	12-98	5	25	02-95	2	6	6	6	5	8	8	12	13	9	9	5	
		<b>BE</b>	-18	02-96	2	26	12-94	7	10	11	10	6	14	16	15	13	14	4	2
		<b>CZ</b>	-6	12-98	21	71	03-95	18	23	24	21	16	13	20	19	10	11	10	11
		<b>DK</b>	-12	11-01	-1	12	11-04	7	2	9	8	3	1	4	12	8	10	0	2
		<b>DE</b>	-8	12-93	6	23	02-95	4	7	7	7	8	9	9	12	15	15	11	6
		<b>EE</b>	-28	03-99	16	86	04-92	21	31	26	26	19	21	20	22	26	22	19	12
		<b>EL</b>	-4	01-99	18	41	10-90	11	14	14	12	12	11	11	11	9	9	10	9
		<b>ES</b>	-18	04-93	3	35	04-95	2	2	3	4	3	4	5	12	15	8	7	7
		<b>FR</b>	-26	01-99	0	24	02-90	-8	1	0	-4	-2	1	0	12	13	0	7	4
		<b>IE</b>	-25	11-92	-3	29	11-03	-4	6	1	4	5	11	-2	1	-4	-5	2	-1
		<b>IT</b>	-10	12-98	11	40	03-95	11	9	10	11	9	14	14	15	15	11	11	7
		<b>CY</b>	-12	10-01	6	36	10-03	9	21	23	7	9	5	-5	8	6	3	-2	4
		<b>LV</b>	-17	12-98	16	50	07-94	29	28	23	21	18	19	24	24	28	24	19	17
		<b>LT</b>	-20	01-00	15	75	11-93	7	13	2	9	6	-2	-4	-5	-7	-8	1	7
		<b>LU</b>	-50	08-91	-2	53	12-94	9	18	5	13	17	12	26	31	22	10	3	13
		<b>HU</b>	16	04-03	30	51	01-01	36	28	31	30	28	29	31	31	24	23	24	16
		<b>NL</b>	-7	01-99	5	20	12-94	9	8	9	12	6	8	13	10	9	11	1	1
		<b>AT</b>	-23	03-96	-1	17	03-90	4	5	4	5	3	9	11	10	9	6	2	-1
		<b>PL</b>	-6	06-02	15	46	01-93	25	26	26	20	17	13	12	1	-1	3	4	-4
	<b>PT<sup>(c)</sup></b>	-9	05-03	8	29	10-90	3	0	-1	3	4	4	2	-2	0	-7	3	1	
	<b>SI</b>	-24	04-99	-8	5	01-01	-3	-2	-3	-2	-1	3	4	3	1	0	0	-3	
	<b>SK</b>	-33	03-01	31	81	04-95	38	35	19	26	20	9	16	6	20	-12	0	28	
	<b>FI</b>	-34	03-96	2	49	08-94	0	-5	9	4	13	13	5	14	14	17	31	15	
	<b>SE</b>	-20	11-96	5	37	12-94	8	18	21	15	22	16	17	20	19	21	13	1	
	<b>UK</b>	-30	01-99	0	29	02-95	-2	2	7	7	12	9	3	15	13	15	16	15	

(a) The indicator is the arithmetic average of the balances (%) of the questions on production expectations, order-books and stocks (the last with inverted sign).

(b) Highest figure is considered as minimum, lowest figure is considered as maximum.

(c) The Portuguese series was revised for the period Jan. 2003 to Jan. 2004 due to a sample change.

TABLE 2.b.1: Industrial confidence indicator by sector : consumer goods <sup>(a)</sup> (s.a.)

	Since 01/1990						2004						2005					
	Min.		Ave.		Max.		Apr.	May	June	July	Aug.	Sep.	Oct.	Nov.	Dec.	Jan.	Feb.	Mar.
	Value	Date	Value	Date	Value	Date												
EU	-21	01-93	-9	2	01-90	-7	-6	-8	-8	-9	-10	-8	-8	-8	-5	-6	-11	
<b>Euro area</b>	-23	01-93	-8	6	09-90	-8	-8	-10	-9	-11	-10	-9	-9	-7	-8	-7	-10	
BE	-29	06-93	-11	1	09-00	-6	-8	-7	-1	-8	-5	-5	-3	-9	-4	-8	-10	
CZ	0	11-04	7	16	09-02	15	12	13	8	10	4	6	0	3	7	11	7	
DK	-26	12-98	-2	20	04-01	-1	6	3	10	6	5	1	-3	-2	3	2	-2	
DE	-30	12-02	-15	22	09-90	-17	-17	-21	-19	-19	-19	-16	-18	-13	-14	-15	-14	
EE	5	02-02	12	20	02-03	12	17	18	11	9	13	7	6	11	8	8	15	
EL	-27	09-90	3	13	02-00	11	8	9	4	2	-2	-5	-5	0	2	-3	-5	
ES	-47	01-93	-8	8	10-97	-2	-3	-2	-6	-11	-6	-7	-3	-3	0	-4	-8	
FR	-26	06-93	-6	15	09-00	-6	-5	-7	-11	-11	-12	-8	-7	-8	-8	-6	-14	
IE	-34	08-93	-2	22	01-95	-11	-3	-3	3	-14	-6	-5	-11	-6	-7	7	8	
IT	-19	01-93	-2	10	01-90	1	-3	-4	-2	-2	0	-3	0	-2	-3	-3	-9	
CY	-13	04-03	-4	4	12-01	-2	-6	-10	-7	2	-5	-1	-5	-4	-6	-10	-2	
LV	-34	10-98	-5	10	09-03	5	4	2	5	4	6	1	2	1	1	3	3	
LT	-21	02-04	-11	2	03-05	-14	-14	-15	-13	-10	-11	-2	-4	-15	-12	-12	2	
LU	-41	05-93	3	40	12-90	4	5	24	22	25	24	15	7	12	5	-1	12	
HU	-19	11-04	-6	9	11-00	1	-13	-7	-9	-8	-10	-6	-19	-10	-17	-16	-9	
NL	-12	06-03	-2	6	12-94	-10	-6	-2	-7	-7	-5	-4	-4	-5	-5	-1	3	
AT	-23	04-96	-14	-5	04-00	-12	-15	-11	-12	-7	-9	-10	-9	-12	-13	-11	-15	
PL	-23	01-02	-16	-10	07-04	-11	-14	-11	-10	-10	-10	-12	-14	-13	-12	-15	-14	
PT <sup>(b)</sup>	-29	01-92	-6	11	01-91	-13	-10	-14	-13	-13	-13	-15	-12	-13	-17	-16	-16	
SI	-18	04-03	-6	10	04-04	10	1	-5	0	4	1	3	0	-1	-6	-7	-1	
SK	-12	09-03	2	19	08-01	-8	-10	-4	-6	-7	-2	-8	3	-9	-2	-4	0	
FI	-25	07-93	-2	14	06-97	7	5	0	7	2	-3	-3	-8	0	0	-7	-2	
SE	-24	06-04	-12	2	07-00	-18	-13	-24	-18	-11	-13	-19	-12	-14	-10	-8	-10	
UK	-43	11-98	-12	13	01-05	-4	3	0	-6	-5	-10	-3	-3	-8	13	4	-18	

TABLE 2.b.2: Industrial confidence indicator by sector : investment goods (incl. motor vehicles) <sup>(a)</sup> (s.a.)

	Since 01/1990						2004						2005					
	Min.		Ave.		Max.		Apr.	May	June	July	Aug.	Sep.	Oct.	Nov.	Dec.	Jan.	Feb.	Mar.
	Value	Date	Value	Date	Value	Date												
EU	-38	06-93	-8	7	06-98	-2	-2	0	-2	0	2	1	0	0	-4	-4	-5	
<b>Euro area</b>	-42	07-93	-8	10	06-98	-2	-3	-1	-1	-2	1	1	0	-1	-3	-5	-6	
BE	-44	01-93	-10	12	05-90	-4	2	1	1	-3	-2	2	2	-3	-3	-7	-4	
CZ	:	:	:	:	:	:	:	:	:	:	:	:	:	:	:	:	:	
DK	-29	11-98	-2	28	01-98	8	3	17	17	8	-1	4	-9	3	1	-3	-3	
DE	-45	07-93	-10	17	04-90	-3	-5	-5	-4	-3	0	1	1	0	-2	-5	-8	
EE	-11	09-01	12	38	09-02	7	25	10	6	3	7	2	3	3	18	24	17	
EL	-31	05-94	0	35	12-00	10	14	4	2	-2	-5	1	-4	-15	-12	-1	2	
ES	-46	07-93	-5	18	06-98	1	1	1	3	-1	6	6	4	3	-4	0	-1	
FR	-49	06-93	-8	29	07-98	0	0	6	4	4	5	1	-1	-2	-8	-6	-7	
IE	-53	11-01	3	60	12-99	7	18	46	-8	-26	-24	-1	2	-6	-12	7	-2	
IT	-36	05-93	-5	25	07-95	-6	-7	-6	-2	-3	-1	1	-7	-5	-3	-9	-6	
CY	-4	07-01	10	20	05-04	16	20	11	13	17	16	16	13	12	16	15	5	
LV	-34	07-99	-11	8	10-04	1	-1	7	2	4	2	8	3	4	3	-3	-2	
LT	-17	11-03	-3	13	01-05	4	2	-3	10	2	2	2	-6	4	13	-4	-8	
LU	-40	09-93	-7	21	08-95	3	11	10	10	4	4	4	6	-2	-6	9	11	
HU	-16	11-01	0	15	04-98	5	0	1	2	4	1	-2	-13	-4	-7	-5	-10	
NL	-18	03-93	-4	8	12-00	-2	-1	-1	0	-1	2	-1	1	-2	-1	-4	-3	
AT	-24	05-96	-8	10	09-00	-10	-6	-3	-4	-5	-3	-4	-5	-6	-3	-9	-7	
PL	-27	10-01	-13	1	11-04	-2	-3	1	-1	-3	0	0	1	-3	-5	-6	-5	
PT <sup>(b)</sup>	-43	09-93	-6	14	07-98	-2	-9	-6	-11	-9	-4	-10	-12	-5	-12	-12	-3	
SI	-16	06-96	2	20	06-00	10	12	14	16	16	16	15	9	9	6	3	6	
SK	-21	07-04	15	55	02-01	8	-12	-18	-21	17	13	19	4	-2	1	19	23	
FI	-30	01-03	9	31	10-00	2	-6	22	21	15	18	19	22	20	24	12	27	
SE	-31	02-02	-3	19	07-04	12	9	15	19	11	13	15	11	13	8	-2	-7	
UK	-44	12-01	-12	21	10-97	-9	-3	-6	-13	6	4	-8	-7	0	-13	-2	-4	

TABLE 2.b.3: Industrial confidence indicator by sector : intermediate goods <sup>(a)</sup> (s.a.)

	Since 01/1990						2004						2005					
	Min.		Ave.		Max.		Apr.	May	June	July	Aug.	Sep.	Oct.	Nov.	Dec.	Jan.	Feb.	Mar.
	Value	Date	Value	Date	Value	Date												
EU	-29	02-93	-10	14	12-94	-5	-4	-4	-2	-2	-1	-1	-4	-5	-4	-7	-8	
<b>Euro area</b>	-32	04-93	-10	12	12-94	-5	-5	-5	-3	-3	-2	-3	-4	-5	-5	-7	-9	
BE	-35	04-93	-12	15	01-95	-1	-4	-7	7	2	1	1	-2	-4	-3	-6	-6	
CZ	:	:	:	:	:	:	:	:	:	:	:	:	:	:	:	:	:	
DK	-21	01-99	-2	19	02-98	4	3	6	6	3	5	7	5	2	5	5	8	
DE	-36	04-93	-13	7	12-94	-10	-11	-10	-9	-8	-8	-9	-10	-10	-8	-10	-13	
EE	0	05-03	12	23	02-05	20	17	15	12	14	12	11	7	7	19	23	20	
EL	-20	02-91	-2	15	03-00	6	5	-1	-4	-4	-4	-2	-1	-3	-6	-5	-11	
ES	-41	03-93	-6	12	12-97	-1	-3	-4	-4	-2	-4	0	-1	-6	-1	-10	-4	
FR	-42	06-93	-9	22	12-94	-4	-4	-3	-3	-1	3	2	0	2	0	-4	-8	
IE	-29	09-01	-4	20	11-99	9	1	-9	2	-5	6	4	-12	-8	-16	-5	-7	
IT	-23	08-93	-5	14	07-95	-3	-3	-1	0	1	0	3	1	-2	-2	-6	-7	
CY	-33	06-03	6	21	06-01	14	15	21	16	14	16	20	5	11	10	19	-1	
LV	-21	09-99	-3	13	05-04	9	13	5	1	2	3	2	2	4	4	3	4	
LT	-17	12-01	-5	12	07-04	7	9	9	12	0	5	1	0	-9	-5	-7	-7	
LU	-55	03-02	-13	37	04-95	-8	6	7	12	18	16	9	-5	-15	-3	-10	-5	
HU	-16	01-02	-2	11	10-97	6	-1	2	-2	1	-1	-2	-7	-3	-5	-10	-14	
NL	-14	05-93	-2	9	01-95	2	4	3	5	3	1	2	-3	0	-1	-1	-5	
AT	-32	04-96	-12	2	09-00	-7	-6	-8	-5	-7	-7	-5	-4	-7	-7	-8	-12	
PL	-32	12-01	-18	-7	05-04	-7	-7	-7	-8	-9	-10	-8	-11	-13	-13	-14	-13	
PT <sup>(b)</sup>	-34	07-93	-9	13	01-95	-11	-8	-8	-8	-7	-5	-5	-6	-9	-10	-15	-16	
SI	-23	03-99	-2	18	06-00	2	1	3	2	1	4	4	-1	-1	2	1	0	
SK	-19	03-01	3	24	09-04	22	17	21	16	14	24	16	18	13	14	8	1	
FI	-36	09-01	-5	31	07-00	-2	1	5	4	8	3	-3	-4	-7	-6	-1	-8	
SE	-27	07-03	-8	7	01-05	-8	-1	-1	0	1	7	3	6	4	7	5	0	
UK	-45	02-91	-14	25	12-94	-10	3	4	3	0	3	5	-6	-5	-6	-6	-3	

TABLE 2.b.4: Industrial confidence indicator by sector: manufacture of food, beverage and tobacco<sup>(a)</sup> (s.a.)

	Since 01/1990															2005		
	Min.		Ave.		Max.		2004											
	Value	Date	Value	Date	Value	Date	Apr.	May	June	July	Aug.	Sep.	Oct.	Nov.	Dec.	Jan.	Feb.	Mar.
<b>EU</b>	-13	01-93	-3	4	07-90	-2	-3	-3	-3	-3	-5	-4	-2	-2	-4	-3	-6	
<b>Euro area</b>	-14	07-93	-3	7	11-90	-2	-3	-2	-3	-5	-4	-6	-4	-2	-3	-5	-8	
<b>BE</b>	-21	04-93	-4	8	08-91	0	-5	-4	4	-6	-2	-1	-2	-6	1	-7	-2	
<b>CZ</b>	-18	10-98	2	23	09-04	6	5	7	3	1	23	2	5	4	0	5	6	
<b>DK</b>	-44	12-98	-5	41	04-01	-14	-5	-2	9	4	0	4	-6	0	5	0	.	
<b>DE</b>	-11	12-00	-2	25	09-90	-5	-5	-6	-8	-6	-6	-6	-4	-2	-6	-6	-8	
<b>EE</b>	-1	02-02	13	25	05-04	24	25	16	15	11	14	11	9	10	10	5	20	
<b>EL</b>	-13	02-93	3	16	07-00	15	10	11	6	5	3	-2	1	4	0	-1	-3	
<b>ES</b>	-25	05-93	-1	15	02-03	4	0	8	1	-3	-1	-8	1	9	4	0	.	
<b>FR</b>	-31	06-93	-8	6	09-99	-7	-2	-7	-10	-12	-13	-15	-12	-8	-8	-10	-19	
<b>IE</b>	-31	07-03	-3	23	03-01	-13	-4	-5	-2	-16	-4	-7	-14	-1	-6	5	6	
<b>IT</b>	-15	01-93	2	12	01-98	10	2	3	6	2	8	3	6	5	-1	0	-5	
<b>CY</b>	-8	04-03	10	26	04-02	5	-1	5	6	13	8	5	10	25	9	1	13	
<b>LV</b>	-40	10-98	-5	15	03-03	2	3	1	5	5	-1	3	1	5	2	5	6	
<b>LT</b>	-37	01-99	-18	-2	11-04	-14	-16	-12	-10	-9	-10	-5	-2	-12	-9	-10	.	
<b>LU</b>	-40	05-93	-2	20	07-01	3	2	4	-11	-5	-5	5	-6	-2	-5	2	6	
<b>HU</b>	-25	09-03	-8	16	05-00	-6	-18	-11	-10	-11	-6	-8	-15	-9	-12	-23	-16	
<b>NL</b>	-15	07-03	-1	9	12-94	-5	-3	2	-1	1	0	-1	0	-2	-2	-1	-2	
<b>AT</b>	-30	05-99	-12	6	11-00	-9	-20	-10	-11	-7	-5	-9	-8	-9	-8	-13	-14	
<b>PL</b>	.	.	.	.	.	.	.	.	.	.	.	.	.	.	.	.	.	
<b>PT<sup>(b)</sup></b>	-22	05-93	-4	14	04-90	-9	-11	-14	-11	-13	-7	-8	-10	-9	-3	-7	-6	
<b>SI</b>	-16	08-95	3	25	03-00	18	4	6	1	6	1	11	9	9	-7	-1	5	
<b>SK</b>	-21	02-05	-2	18	11-00	-10	-10	-12	-9	-9	-9	-18	-4	-6	-12	-21	-6	
<b>FI</b>	-26	07-96	-2	11	10-97	11	7	2	7	3	-7	-2	-16	-8	3	-14	-7	
<b>SE</b>	-31	06-04	-8	7	08-99	-20	-17	-31	-18	-11	-11	-22	-9	-18	-14	-11	-16	
<b>UK</b>	-25	01-99	-2	20	06-01	4	3	-2	1	5	-11	7	10	0	-5	9	-1	

TABLE 2.b.5: Industrial confidence indicator by sector: chemical industry<sup>(a)</sup> (s.a.)

	Since 01/1990															2005		
	Min.		Ave.		Max.		2004											
	Value	Date	Value	Date	Value	Date	Apr.	May	June	July	Aug.	Sep.	Oct.	Nov.	Dec.	Jan.	Feb.	Mar.
<b>EU</b>	-23	11-92	-3	20	12-94	0	1	-1	2	4	3	5	2	4	4	5	-1	
<b>Euro area</b>	-30	05-93	-2	17	12-94	7	1	-1	3	5	5	5	3	6	2	2	-1	
<b>BE</b>	-20	10-01	0	26	02-95	4	5	-2	8	2	-2	6	9	6	5	3	3	
<b>CZ</b>	-26	11-98	-2	18	10-00	-12	-5	5	5	1	-2	0	-6	7	5	13	0	
<b>DK</b>	-23	12-98	13	44	12-94	9	4	4	18	7	12	13	15	15	11	8	.	
<b>DE</b>	-40	04-93	-7	16	12-94	3	4	0	4	5	6	8	5	4	2	2	4	
<b>EE</b>	-3	11-04	13	29	06-04	8	1	29	18	11	1	10	-3	10	26	16	16	
<b>EL</b>	-12	10-98	4	19	07-03	10	6	7	8	7	4	8	1	2	10	1	5	
<b>ES</b>	-11	04-96	1	14	02-95	4	0	-3	3	8	2	1	5	6	4	-8	.	
<b>FR</b>	-24	05-93	1	22	07-00	1	-5	-4	1	5	9	6	2	9	8	9	1	
<b>IE</b>	-22	01-99	3	40	03-96	18	-6	-11	-4	2	-1	-1	-3	15	-5	7	-1	
<b>IT</b>	-31	11-92	1	33	11-94	21	12	8	9	8	11	2	4	-3	-6	-8	-11	
<b>CY</b>	-8	10-02	15	50	01-04	6	28	27	15	11	6	41	-5	6	-3	-2	19	
<b>LV</b>	-28	02-97	-7	12	12-00	-6	-9	-4	-2	4	6	-3	3	5	-1	1	-5	
<b>LT</b>	-59	02-99	-12	29	07-04	-15	-9	12	29	-19	-8	9	10	-5	-9	-8	.	
<b>LU</b>	-65	02-02	-4	38	08-98	22	7	17	9	-1	-1	2	2	-8	15	-13	-15	
<b>HU</b>	-35	02-99	-2	23	10-00	13	-9	3	1	-12	4	13	-9	7	-18	0	-26	
<b>NL</b>	-9	03-99	1	16	10-94	3	7	5	6	6	1	2	4	6	3	1	-5	
<b>AT</b>	-23	04-96	-4	15	06-00	-3	-3	-4	-2	0	0	0	-3	-4	-1	-2	-8	
<b>PL</b>	-35	11-01	-18	8	09-97	-11	-12	-10	-12	-16	-8	-9	-9	-12	-7	-12	-12	
<b>PT<sup>(b)</sup></b>	-26	06-03	-1	19	03-00	11	-10	5	6	-2	3	1	-3	-7	-8	-20	-18	
<b>SI</b>	-34	10-98	-2	27	12-00	14	-3	-11	-8	2	10	17	-2	1	9	14	6	
<b>SK</b>	-27	01-04	-8	11	11-00	-15	-13	-12	-12	-12	-11	-10	-9	-20	-1	-15	-7	
<b>FI</b>	-23	10-98	3	27	06-04	-1	8	27	16	19	15	11	7	9	9	8	3	
<b>SE</b>	-13	07-03	6	22	09-04	-9	-3	5	14	10	22	13	10	6	21	6	-13	
<b>UK</b>	-42	04-91	-6	30	08-94	-35	3	3	-9	-4	-11	6	-5	-7	16	24	1	

TABLE 2.b.6: Industrial confidence indicator by sector: manufacture of motor vehicles, trailers and semi-trailers<sup>(a)</sup> (s.a.)

	Since 01/1990															2005		
	Min.		Ave.		Max.		2004											
	Value	Date	Value	Date	Value	Date	Apr.	May	June	July	Aug.	Sep.	Oct.	Nov.	Dec.	Jan.	Feb.	Mar.
<b>EU</b>	-56	07-93	-6	25	06-98	-1	0	-1	-3	2	4	0	2	4	-7	-10	-10	
<b>Euro area</b>	-62	07-93	-4	27	07-98	1	5	2	2	1	4	6	1	1	-6	-12	-11	
<b>BE</b>	-48	06-02	-7	31	02-95	-2	16	30	13	3	6	8	9	-2	-2	-3	-5	
<b>CZ</b>	-82	12-98	5	90	04-00	27	3	6	6	7	20	40	41	26	15	15	18	
<b>DK</b>	-52	03-04	1	48	12-04	-25	-6	6	5	13	16	34	36	48	26	18	.	
<b>DE</b>	-64	07-93	-1	41	09-90	2	2	-5	-3	-4	3	3	5	5	1	-8	-9	
<b>EE</b>	.	.	.	.	.	.	.	.	.	.	.	.	.	.	.	.	.	
<b>EL</b>	-91	07-91	1	69	03-90	21	13	3	7	0	-9	1	-10	-15	-27	-6	-7	
<b>ES</b>	-61	01-93	-8	26	02-98	-1	5	1	3	3	1	8	3	-4	-4	-8	.	
<b>FR</b>	-83	07-93	-6	68	07-98	2	8	14	14	14	14	13	3	4	-14	-15	-13	
<b>IE</b>	.	.	.	.	.	.	.	.	.	.	.	.	.	.	.	.	.	
<b>IT</b>	-53	10-90	-9	37	01-90	-3	10	2	-2	-5	-20	4	-36	-27	-28	-42	-37	
<b>CY</b>	-16	06-04	4	21	07-02	9	1	-16	-1	11	14	12	-3	1	-4	1	2	
<b>LV</b>	-24	02-02	2	19	12-02	4	5	17	4	10	12	17	8	10	-3	-2	10	
<b>LT</b>	-99	08-99	-24	20	11-03	-1	-12	-8	-6	15	-4	-1	10	13	15	9	.	
<b>LU</b>	-40	04-96	10	66	08-98	-28	8	16	22	10	6	21	-4	-10	-20	-24	-20	
<b>HU</b>	-40	02-96	0	40	12-96	11	-27	1	11	13	6	-32	-24	-9	6	-19	-4	
<b>NL</b>	-60	12-90	0	35	12-97	13	17	10	18	10	15	16	7	-1	0	-3	1	
<b>AT</b>	-27	09-01	-3	15	07-00	-9	11	6	2	3	6	-2	4	-3	-1	-8	0	
<b>PL</b>	-44	10-98	-10	27	10-97	6	6	15	10	8	9	5	1	0	-3	-2	-6	
<b>PT<sup>(b)</sup></b>	-65	09-93	-10	19	03-92	-28	-15	-21	-15	-18	-15	-9	-6	-11	-19	7	3	
<b>SI</b>	-33	10-96	4	42	09-04	17	21	20	24	23	42	31	26	17	24	8	20	
<b>SK</b>	-34	07-04	25	70	02-01	12	-16	-23	-34	20	14	21	1	-13	-5	25	30	
<b>FI</b>	-40	10-98	-6	32	07-04	5	-1	-4	32	-5	-6	7	-6	-19	7	2	8	
<b>SE</b>	-50	09-96	-3	39	05-00	34	19	32	24	8	10	7	1	6	6	4	-15	
<b>UK</b>	-83	12-90	-14	45	10-94	-34	-40	-35	-57	3	0	-50	6	19	-30	-13	-2	

TABLE 2.b.7: Industrial confidence indicator by sector: manufacture of textiles<sup>(a)</sup> (s.a.)

	Since 01/1990						2004						2005					
	Min.		Ave.		Max.		Apr.	May	June	July	Aug.	Sep.	Oct.	Nov.	Dec.	Jan.	Feb.	Mar.
	Value	Date	Value	Date	Value	Date												
EU	-34	02-93	-19	-1	07-97	-26	-23	-24	-21	-20	-19	-19	-21	-22	-20	-23	-24	
<b>Euro area</b>	-37	04-93	-18	0	08-00	-25	-24	-26	-22	-22	-20	-19	-21	-22	-20	-23	-25	
BE	-43	02-93	-18	6	04-00	-17	-17	-20	-19	-16	-17	-17	-14	-18	-21	-25	-27	
CZ	-42	02-99	-13	9	11-00	-5	-4	-12	-5	-2	-1	-2	3	0	3	-3	-5	
DK	-25	09-90	-2	21	07-04	2	7	8	21	9	-1	-2	6	-2	0	-1	.	
DE	-52	11-01	-34	-5	01-90	-47	-45	-47	-44	-44	-42	-40	-42	-45	-39	-34	-36	
EE	-16	05-03	6	28	12-02	3	1	-9	-4	4	3	-3	-14	-3	-8	7	18	
EL	-41	01-91	-9	21	05-00	-12	-19	-22	-16	-13	-9	-9	-17	-7	-9	-13	-10	
ES	-59	03-93	-25	4	07-97	-29	-30	-37	-39	-32	-35	-32	-35	-33	-25	-32	.	
FR	-48	06-93	-19	9	12-00	-27	-26	-31	-29	-28	-24	-20	-20	-25	-16	-26	-26	
IE	-71	11-02	-18	58	05-04	-1	58	17	51	32	49	40	40	20	36	-6	9	
IT	-32	02-93	-9	18	06-00	-17	-18	-15	-9	-10	-8	-8	-13	-12	-12	-15	-20	
CY	-27	11-04	-9	14	01-04	-3	-7	-8	-3	5	-22	-19	-27	-15	-5	-26	-18	
LV	-31	04-97	-2	19	12-00	9	12	9	8	6	7	5	6	5	5	0	-1	
LT	-48	06-99	-18	6	08-04	-9	-4	-7	-16	6	-9	-9	-17	-31	-14	-12	.	
LU	-67	06-96	6	87	09-97	-1	5	60	63	65	66	34	18	27	13	-4	23	
HU	-53	12-99	-8	48	12-00	-15	-18	-11	-39	3	-19	-24	-12	-3	-21	-26	-12	
NL	-32	04-93	-7	15	11-97	-13	-9	-8	-9	-8	-9	-9	-6	-8	-11	-15	-13	
AT	-40	12-96	-22	-5	12-98	-28	-15	-18	-22	-14	-19	-29	-30	-24	-24	-27	-29	
PL	-37	12-01	-21	-4	09-97	-18	-15	-14	-15	-17	-14	-19	-29	-25	-21	-22	-23	
PT <sup>(b)</sup>	-38	06-93	-12	14	05-98	-16	-13	-25	-15	-17	-17	-18	-21	-19	-24	-24	-28	
SI	-42	03-99	-15	7	02-01	-16	-20	-17	-16	0	-10	-9	-18	-16	-16	-18	-23	
SK	-50	03-99	-22	6	07-01	-27	-36	-22	-31	-38	-17	-30	-31	-16	-26	-16	-13	
FI	-28	11-98	-6	17	02-05	-1	-5	-3	4	-7	11	10	10	13	13	17	17	
SE	-53	11-01	-19	16	10-97	-8	-2	-40	-12	-26	-1	-16	-14	-23	-6	-20	-21	
UK	-52	08-98	-22	17	11-96	-40	-19	-14	-21	-17	-19	-19	-26	-24	-25	-29	-20	

TABLE 2.b.8: Industrial confidence indicator by sector: manufacture of basic metals<sup>(a)</sup> (s.a.)

	Since 01/1990						2004						2005					
	Min.		Ave.		Max.		Apr.	May	June	July	Aug.	Sep.	Oct.	Nov.	Dec.	Jan.	Feb.	Mar.
	Value	Date	Value	Date	Value	Date												
EU	-39	11-92	-9	30	11-94	6	5	6	7	8	11	11	10	7	7	1	-5	
<b>Euro area</b>	-38	11-92	-8	27	11-94	5	3	5	7	9	10	10	9	7	7	1	-7	
BE	-57	01-96	-17	28	05-00	4	-11	-16	20	18	17	1	2	-1	0	-11	-12	
CZ	-43	10-98	1	28	04-98	9	13	21	9	1	27	7	10	21	9	-1	16	
DK	-46	06-91	-5	43	12-94	10	14	17	16	12	28	7	18	4	9	0	.	
DE	-50	11-01	-9	34	05-00	5	2	7	13	12	15	11	14	11	11	9	-7	
EE	.	.	.	.	.	.	.	.	.	.	.	.	.	.	.	.	.	
EL	-54	02-96	-4	28	06-90	26	19	12	-1	-3	-6	-8	-15	-20	-28	-28	-27	
ES	-45	03-96	-7	36	04-00	8	-4	1	-7	-7	7	6	13	10	8	-9	.	
FR	-53	03-96	-5	54	10-94	4	13	6	0	4	8	12	11	9	2	-8	-10	
IE	-83	06-01	3	84	08-04	40	34	75	64	84	.	.	.	.	.	.	.	
IT	-41	09-91	-7	28	11-94	-2	1	8	-1	14	4	11	1	5	7	9	3	
CY	-22	05-01	14	59	04-02	-7	11	5	13	-3	-4	13	16	15	7	12	25	
LV	0	12-04	19	42	02-03	7	9	28	11	20	12	19	17	0	18	19	21	
LT	-48	08-99	-4	45	11-03	24	2	6	26	26	12	2	18	33	13	2	.	
LU	-82	03-02	-20	50	05-95	-11	4	26	5	4	3	-22	-48	-49	-37	-27	-24	
HU	-37	09-02	-5	32	10-00	30	-9	-18	-3	14	-3	-2	-5	-4	-9	-28	5	
NL	-41	11-92	4	35	02-98	27	27	22	31	24	22	26	4	12	27	15	13	
AT	-32	05-96	-5	24	09-97	-2	-14	-8	8	-9	-4	11	3	-12	-1	-17	-12	
PL	-34	05-99	-11	10	01-04	2	7	-1	2	-2	-5	0	-15	-9	-7	-13	-15	
PT <sup>(b)</sup>	-50	05-03	-3	37	10-04	-12	-8	-19	-14	21	17	37	15	1	1	-5	-34	
SI	-35	02-99	5	42	06-00	9	25	18	25	16	24	15	21	22	20	19	3	
SK	-52	03-01	-2	54	02-04	53	46	51	39	28	50	34	43	28	28	18	5	
FI	-43	11-01	3	58	11-00	9	16	18	16	10	11	0	0	12	-7	4	-11	
SE	-51	02-96	-7	29	11-04	2	6	15	20	18	24	25	29	24	25	13	11	
UK	-73	11-98	-14	48	11-94	14	14	6	-5	4	12	16	12	4	-2	-2	-8	

TABLE 2.b.9: Industrial confidence indicator by sector: manufacture of machinery and equipment<sup>(a)</sup> (s.a.)

	Since 01/1990						2004						2005					
	Min.		Ave.		Max.		Apr.	May	June	July	Aug.	Sep.	Oct.	Nov.	Dec.	Jan.	Feb.	Mar.
	Value	Date	Value	Date	Value	Date												
EU	-36	11-92	-11	10	02-95	-3	-3	-2	-1	0	0	1	-3	-1	-3	-2	-4	
<b>Euro area</b>	-38	05-93	-11	13	02-90	-5	-7	-4	-2	-1	0	-1	-2	-1	-1	-1	-3	
BE	-50	05-93	-14	14	03-90	-7	-5	-6	-7	-7	-6	1	0	-3	-8	-9	-6	
CZ	-17	08-02	-4	8	06-01	-3	2	-1	0	-3	-3	-2	-1	-5	-9	1	4	
DK	-49	11-98	-5	38	01-98	17	10	23	22	11	-1	0	-20	4	-7	-10	.	
DE	-39	03-93	-13	20	02-90	-5	-5	-3	-3	1	-1	-1	-1	0	0	1	-5	
EE	.	.	.	.	.	.	.	.	.	.	.	.	.	.	.	.	.	
EL	-33	05-94	-1	30	06-02	3	6	8	14	3	-8	-1	-4	-12	4	6	13	
ES	-58	03-93	-11	17	06-98	-1	1	7	2	7	7	1	-10	3	-3	0	.	
FR	-47	07-91	-13	19	04-00	-3	-4	-5	-3	-2	-2	-3	-5	-11	-10	-4	-6	
IE	-79	07-03	-14	63	07-94	-9	-17	-18	-29	-35	-19	-19	-12	-13	-7	-22	-23	
IT	-36	05-93	-5	30	02-95	-8	-12	-9	-2	-6	1	1	-1	-1	0	-5	-2	
CY	-37	04-04	-3	30	04-02	-37	-9	-13	-1	-19	-26	9	2	-31	2	-8	26	
LV	-39	11-98	-9	13	06-02	5	7	7	1	0	0	6	5	5	0	-5	-1	
LT	-45	01-05	-8	16	02-02	-10	11	-1	-10	-16	-12	5	-31	-31	-45	-5	.	
LU	-52	09-93	-8	28	02-05	0	8	6	7	7	6	8	12	8	6	28	22	
HU	-22	10-03	-1	21	12-97	-14	1	-11	-12	3	-11	-12	-21	-13	-17	-19	-18	
NL	-23	09-01	-4	13	12-00	-1	2	5	2	2	5	0	3	-2	0	-5	-4	
AT	-32	03-96	-11	13	11-00	-11	-14	-7	-7	-10	-9	-6	-3	3	-4	-5	-5	
PL	-34	03-99	-16	9	09-97	-4	-6	-3	-2	-2	-2	-3	-2	-7	-4	-6	-5	
PT <sup>(b)</sup>	-60	09-93	-8	36	07-96	0	-21	-3	-2	11	8	-5	-3	3	2	9	-9	
SI	-35	03-03	0	40	06-00	29	20	16	20	16	12	16	16	17	8	7	12	
SK	-17	08-03	8	37	11-04	-4	-7	10	15	14	15	23	37	14	14	14	14	
FI	-36	01-03	-1	30	01-05	-4	-1	11	10	8	2	19	19	29	30	12	17	
SE	-33	06-96	-7	18	06-04	11	16	18	13	11	10	11	13	11	10	13	12	
UK	-51	03-91	-16	24	03-95	3	13	0	-1	3	0	11	-15	-12	-22	-13	-18	

(a) For each sector, this indicator is an average of the responses (seasonally adjusted balances, i.e. differences between the percentages of respondents giving positive and negative replies) to the questions on production expectations, order-books and stocks (the last with inverted sign).

(b) The Portuguese series was revised for the period Jan. 2003 to Jan. 2004 due to a sample change.

TABLE 3: Monthly survey of services (s.a.)<sup>(a)</sup>

		Since 01/1990						2004						2005					
		Min.		Ave.		Max.		Apr.	May	June	July	Aug.	Sep.	Oct.	Nov.	Dec.	Jan.	Feb.	Mar.
		Value	Date	Value	Date	Value	Date												
SERVICES CONFIDENCE INDICATOR	EU	-8	03-03	17	32	08-98	13	14	12	13	14	14	15	13	12	14	13	9	
	<b>Euro area</b>	-7	03-03	18	34	08-98	11	13	11	12	13	11	12	11	10	13	10	9	
	BE	-7	03-03	13	33	03-98	12	10	12	18	8	15	17	10	11	15	14	11	
	CZ <sup>(n)</sup>	30	01-05	40	52	07-02	42	45	45	45	43	40	38	39	35	30	38	36	
	DK	11	10-01	25	37	12-04	37	32	29	28	28	30	35	33	37	34	33	34	
	DE	-23	12-02	25	52	03-99	14	17	11	12	13	12	11	11	8	11	6	5	
	EE <sup>(n)</sup>	-6	12-04	22	43	05-04	37	43	31	26	20	14	13	-5	-6	-3	14	23	
	EL	-14	04-03	27	62	08-00	28	26	24	24	16	7	13	11	6	20	18	23	
	ES	10	10-04	31	56	06-98	22	26	22	16	16	17	10	13	16	15	12	14	
	FR <sup>(b)</sup>	-22	06-93	3	25	06-90	4	3	6	10	9	9	12	10	11	11	9	7	
	IE	-14	05-03	17	44	08-98	-1	2	-7	7	4	-12	-4	-10	4	-2	-9	-4	
	IT	-5	11-01	17	44	02-98	7	13	15	15	17	11	17	13	10	19	13	16	
	CY <sup>(n)</sup>	-16	02-03	4	25	10-04	16	14	11	8	9	22	25	12	7	4	8	13	
	LV <sup>(n)</sup>	2	12-03	11	19	06-03	13	17	13	12	12	12	6	5	4	10	13	14	
	LT <sup>(n)</sup>	5	11-04	17	40	04-03	30	23	15	14	14	23	20	5	15	14	8	20	
	HU <sup>(n)</sup>	-10	11-04	1	14	03-02	4	5	1	1	-3	-6	-9	-10	-7	-7	0	-5	
	NL	3	06-03	17	35	12-97	6	7	4	5	8	10	8	7	8	7	11	7	
	AT	0	01-02	16	30	03-98	16	16	15	16	19	17	19	16	16	13	12	9	
	PL <sup>(n)</sup>	-8	03-03	0	8	02-05	2	1	4	-4	6	2	3	3	1	7	8	5	
	PT	-17	05-03	8	29	06-01	10	6	3	5	7	4	4	12	0	-2	5	-3	
SI <sup>(n)</sup>	12	03-05	25	34	10-02	29	26	27	21	25	21	23	23	20	20	22	12		
SK <sup>(n)</sup>	27	03-05	49	61	11-02	52	51	38	40	48	56	50	56	50	29	40	27		
FI	-12	09-03	25	61	09-00	8	-3	-1	18	16	23	31	31	30	38	33	32		
SE	-24	01-03	16	46	12-00	17	24	29	28	26	29	36	29	23	40	30	32		
UK	-20	12-02	15	37	10-97	16	17	16	16	19	27	25	19	19	10	24	3		
ASSESSMENT OF BUSINESS SITUATION	EU	-19	03-03	14	37	06-00	6	5	6	8	9	7	11	9	9	12	8	0	
	<b>Euro area</b>	-18	03-03	16	39	06-00	6	6	6	8	9	6	9	8	8	12	6	1	
	BE	-27	12-01	-3	28	01-98	-10	-5	-3	3	-2	1	3	-2	-5	0	-5	-2	
	CZ <sup>(n)</sup>	54	10-04	60	76	07-02	60	60	65	63	54	54	54	59	58	59	62	55	
	DK	4	05-03	22	42	04-00	32	25	22	19	19	25	30	24	29	27	27	28	
	DE	-35	01-03	27	63	12-98	16	15	8	13	16	12	11	11	8	10	5	-1	
	EE <sup>(n)</sup>	-6	11-04	26	52	06-04	29	52	52	39	27	14	17	-6	2	1	3	9	
	EL	-42	04-03	10	58	09-00	39	29	29	21	15	7	16	11	0	19	22	28	
	ES	4	10-04	31	67	04-00	16	16	14	10	11	9	4	8	10	9	6	5	
	FR <sup>(b)</sup>	-35	09-96	-2	29	06-00	2	-1	4	10	11	11	14	14	16	13	9	6	
	IE	-16	05-03	20	52	11-99	-3	-1	-10	2	2	-11	-1	-15	11	-4	-10	-7	
	IT	-27	10-02	14	44	02-01	-9	-8	-1	0	-12	-17	-3	-11	-3	18	0	-15	
	CY <sup>(n)</sup>	-37	03-03	-5	28	10-04	9	2	6	3	5	17	28	14	1	1	-5	-4	
	LV <sup>(n)</sup>	0	03-04	11	23	07-03	6	10	10	12	12	12	3	4	1	9	6	7	
	LT <sup>(n)</sup>	6	07-03	22	58	04-03	20	21	9	15	18	20	21	7	12	19	9	7	
	HU <sup>(n)</sup>	-17	05-03	1	16	08-02	-2	-1	-5	-4	-6	-12	-16	-10	-4	-6	-6	-10	
	NL	-26	07-93	12	70	12-00	3	5	8	1	14	8	8	9	8	18	19	13	
	AT	-4	10-96	13	30	03-98	10	15	12	16	17	15	16	11	12	11	7	6	
	PL <sup>(n)</sup>	-12	02-04	3	9	11-03	0	-2	1	-2	5	3	3	3	3	6	6	0	
	PT	-22	06-03	5	24	11-97	-8	-2	-9	2	-2	-5	-7	0	-11	2	-5	-7	
SI <sup>(n)</sup>	13	03-05	29	46	10-02	29	21	23	23	23	25	19	27	24	24	20	13		
SK <sup>(n)</sup>	13	03-05	46	64	01-03	52	53	45	44	44	62	40	59	42	21	35	13		
FI	-47	03-03	19	79	05-98	4	-23	-22	-21	7	-7	20	44	28	17	27	27		
SE	-60	01-02	6	48	01-05	23	22	29	26	20	25	34	37	23	48	37	36		
UK	-35	12-02	0	27	12-97	-1	-5	0	1	5	7	16	2	8	2	9	-21		
EVOLUTION OF DEMAND IN RECENT MONTHS	EU	-12	01-02	14	32	03-98	13	14	14	13	14	14	16	13	12	11	10	8	
	<b>Euro area</b>	-16	01-02	14	32	03-98	11	12	11	12	12	9	12	8	8	9	5	7	
	BE	-9	03-03	13	41	11-97	20	5	7	23	1	9	19	3	11	10	15	12	
	CZ <sup>(n)</sup>	14	10-02	28	38	08-04	27	33	36	38	38	30	29	29	27	25	28	24	
	DK	9	04-03	24	42	12-04	40	33	32	30	29	30	39	39	42	37	36	38	
	DE	-32	02-02	19	43	09-98	16	20	14	12	13	10	9	10	9	9	2	4	
	EE <sup>(n)</sup>	-6	11-04	22	50	05-04	33	50	40	35	19	12	16	-6	-2	-6	0	10	
	EL	-9	04-03	34	71	06-01	21	20	21	18	11	3	7	3	2	16	17	26	
	ES	-1	08-02	24	56	06-98	18	17	12	7	10	8	7	10	15	11	5	5	
	FR	-33	03-97	5	37	01-90	4	4	8	11	10	9	11	7	5	9	6	4	
	IE	-24	10-03	11	46	08-98	-10	-3	-12	5	1	-20	-10	-17	-10	-4	-15	-10	
	IT	-28	08-02	12	38	03-01	13	13	22	22	30	15	23	15	13	12	6	16	
	CY <sup>(n)</sup>	-32	03-03	-2	30	10-04	12	7	12	7	17	23	30	18	12	6	9	-5	
	LV <sup>(n)</sup>	-10	03-02	7	20	06-03	9	16	15	13	14	14	7	4	5	9	9	3	
	LT <sup>(n)</sup>	-9	02-03	17	40	04-03	29	25	16	16	13	24	18	2	16	19	7	16	
	HU <sup>(n)</sup>	-19	05-03	-2	13	12-02	0	2	-1	-1	-9	-12	-12	-9	-2	-6	-3	-15	
	NL	-49	03-01	8	50	06-98	-10	-8	-9	-9	-16	-15	-4	-11	-5	-16	-14	2	
	AT	-16	01-02	16	35	03-98	18	15	17	14	20	20	21	18	19	19	15	11	
	PL <sup>(n)</sup>	-18	02-03	-4	6	08-04	3	0	2	-4	6	1	3	2	-1	5	5	3	
	PT	-34	05-03	4	26	06-01	17	-1	5	5	9	4	10	14	-6	-5	6	-5	
SI <sup>(n)</sup>	-13	03-05	19	31	06-04	21	23	31	23	25	14	27	21	15	17	17	-13		
SK <sup>(n)</sup>	29	07-02	48	64	05-02	54	51	35	32	43	47	51	50	53	41	35	32		
FI	-20	09-03	27	83	04-01	-1	3	-8	32	22	33	56	22	29	35	36	34		
SE	-19	10-01	17	53	01-01	11	23	30	20	23	33	44	31	21	34	36	33		
UK	-19	07-03	16	43	01-97	16	23	27	21	22	37	34	33	27	11	31	7		

TABLE 3: (continued) Monthly survey of services (s.a.)<sup>(a)</sup>

		Since 01/1990						2004						2005					
		Min.		Ave.		Max.		Apr.	May	June	July	Aug.	Sep.	Oct.	Nov.	Dec.	Jan.	Feb.	Mar.
		Value	Date	Value	Date	Value	Date												
EVOLUTION OF DEMAND	<b>EU</b>	-1	11-01	24	37	06-98	19	22	17	18	19	23	19	19	16	19	20	20	
	<b>Euro area</b>	-6	11-01	24	38	05-00	16	20	15	16	17	20	17	17	14	18	18	19	
EXPECTED IN THE MONTHS AHEAD	<b>BE</b>	-2	07-03	28	51	01-95	25	31	32	29	24	36	28	28	28	34	33	24	
	<b>CZ<sup>(n)</sup></b>	2	01-04	32	51	05-02	38	41	35	33	36	35	32	30	19	6	24	30	
	<b>DK</b>	16	09-01	30	41	12-04	38	37	33	34	35	36	35	36	41	38	36	35	
	<b>DE</b>	-22	11-01	30	59	09-00	11	16	10	10	10	13	13	12	6	13	11	12	
Component of the services confidence indicator	<b>EE<sup>(n)</sup></b>	-17	12-04	18	60	04-03	49	27	0	4	15	15	6	-3	-17	-3	38	51	
	<b>EL</b>	5	05-03	38	75	09-01	25	29	23	34	24	11	15	18	16	23	14	13	
	<b>ES</b>	19	10-04	38	59	06-98	34	44	39	31	28	33	19	20	22	26	25	31	
	<b>FR</b>	-18	09-93	5	32	03-01	8	6	5	9	7	7	11	9	10	11	11	12	
	<b>IE</b>	-7	05-03	19	45	06-98	9	10	1	16	8	-4	-1	3	12	3	-2	6	
	<b>IT</b>	-6	09-00	25	57	06-01	17	33	23	22	33	35	32	35	20	26	32	47	
	<b>CY<sup>(n)</sup></b>	-3	06-03	17	47	03-05	28	34	16	15	3	27	16	5	8	3	20	47	
	<b>LV<sup>(n)</sup></b>	-5	12-02	14	35	02-02	25	24	15	10	10	9	8	8	5	12	24	33	
	<b>LT<sup>(n)</sup></b>	-18	01-04	12	42	04-04	42	23	20	11	12	25	19	6	19	5	8	35	
	<b>HU<sup>(n)</sup></b>	-14	12-04	5	24	03-02	13	12	8	7	5	5	-1	-10	-14	-8	8	9	
	<b>NL</b>	-4	01-96	26	54	07-00	25	23	14	22	26	36	19	22	20	20	28	6	
	<b>AT</b>	-1	10-01	19	34	06-98	20	19	17	19	20	17	21	17	17	11	12	10	
	<b>PL<sup>(n)</sup></b>	-10	03-03	1	14	02-05	4	5	8	-7	7	3	3	4	1	9	14	14	
	<b>PT</b>	-16	09-03	15	40	06-01	21	20	13	7	14	13	9	23	18	-4	12	4	
	<b>SI<sup>(n)</sup></b>	11	12-02	27	38	04-04	38	35	28	18	26	24	23	22	21	18	29	35	
	<b>SK<sup>(n)</sup></b>	26	01-05	53	74	09-02	49	49	34	45	56	60	58	60	54	26	50	35	
	<b>FI</b>	-12	10-96	30	71	01-01	22	11	28	42	19	42	17	27	33	62	36	35	
	<b>SE</b>	-4	01-03	24	66	02-01	18	26	28	36	36	30	31	20	25	38	18	27	
	<b>UK</b>	-14	03-03	29	57	10-97	33	32	22	27	29	38	26	23	22	18	30	23	
EVOLUTION OF EMPLOYMENT IN RECENT MONTHS	<b>EU</b>	-10	03-03	11	26	08-98	-1	-2	-1	0	2	4	5	4	3	-1	2	0	
	<b>Euro area</b>	-8	03-03	12	28	01-99	-1	-2	-1	-1	2	3	3	3	2	-3	-1	-1	
	<b>BE</b>	-14	08-02	8	30	08-98	1	4	2	2	-9	2	-1	0	-3	4	0	1	
	<b>CZ<sup>(n)</sup></b>	-27	11-04	-10	21	11-02	-23	-18	-10	-18	-24	-23	-21	-27	9	-9	-23	-26	
	<b>DK</b>	-2	04-03	8	21	04-00	14	15	11	8	12	12	14	15	15	13	14	12	
	<b>DE</b>	-19	12-02	15	44	03-99	-6	-4	-6	-3	-1	-2	-3	-2	-2	-6	-7	-5	
	<b>EE<sup>(n)</sup></b>	-3	11-04	8	21	07-04	8	12	20	21	20	8	6	-3	2	0	11	-3	
	<b>EL</b>	-42	06-01	8	45	06-00	11	12	13	23	19	14	4	-3	-15	-17	-8	-11	
	<b>ES</b>	4	03-03	19	45	08-98	17	13	11	6	12	8	5	6	10	9	11	13	
	<b>FR</b>	-27	06-93	4	23	12-90	-3	-9	-2	-4	2	8	9	6	3	3	-1	-1	
	<b>IE</b>	-17	09-04	2	25	02-98	-9	-10	-4	-7	-6	-17	-16	-13	-7	-12	-13	-14	
	<b>IT</b>	-13	05-03	7	25	05-00	5	-3	3	6	-1	4	8	13	7	-11	5	1	
	<b>CY<sup>(n)</sup></b>	-26	06-02	-5	4	08-03	-1	2	-6	0	-8	0	1	0	1	0	3	3	
	<b>LV<sup>(n)</sup></b>	-4	03-03	4	15	06-03	7	9	8	11	10	8	4	5	2	5	1	4	
	<b>LT<sup>(n)</sup></b>	-46	01-03	-12	20	08-04	-19	-18	0	0	20	-2	6	-24	5	-21	-11	-12	
	<b>HU<sup>(n)</sup></b>	-16	02-03	-6	3	10-02	0	-1	1	3	-6	-6	-5	0	-1	-12	-8	-15	
	<b>NL</b>	-8	05-03	17	66	06-98	1	1	-3	-1	2	0	-2	3	3	1	-1	-1	
	<b>AT</b>	-7	08-02	6	18	07-98	3	3	5	1	10	8	8	6	7	2	8	5	
	<b>PL<sup>(n)</sup></b>	-15	02-04	-9	2	02-05	-10	-10	-7	-10	-7	-12	-9	-8	-5	-3	2	-4	
	<b>PT</b>	-34	05-03	-1	28	07-98	-21	-19	-12	-4	-6	-13	-19	-13	-24	-19	-18	-15	
	<b>SI<sup>(n)</sup></b>	-10	02-04	3	16	08-04	-3	7	9	10	16	4	5	3	8	2	5	4	
	<b>SK<sup>(n)</sup></b>	-66	12-04	-37	0	05-02	-46	-56	-52	-54	-50	-47	-52	-59	-66	-40	-45	-46	
	<b>FI</b>	-26	04-97	30	91	11-97	3	20	14	-9	45	49	17	9	14	1	25	22	
	<b>SE</b>	-40	04-03	3	42	01-01	-21	-15	-18	-4	-6	-6	-3	-8	-3	8	-2	4	
	<b>UK</b>	-22	04-03	9	27	05-00	4	1	3	5	1	11	22	11	14	5	18	0	
EVOLUTION OF EMPLOYMENT EXPECTED IN THE MONTHS AHEAD	<b>EU</b>	-6	03-03	10	26	06-98	4	5	7	5	5	5	5	5	5	3	4	4	
	<b>Euro area</b>	-5	04-03	9	25	04-00	2	4	5	2	3	1	1	3	2	1	1	2	
	<b>BE</b>	-11	04-03	16	34	11-99	8	14	20	17	15	18	18	15	14	17	17	15	
	<b>CZ<sup>(n)</sup></b>	-34	12-02	-20	-2	06-02	-10	-17	-27	-18	-29	-27	-29	-29	-18	-25	-13	-16	
	<b>DK</b>	4	03-03	11	18	06-00	16	11	13	15	13	16	12	13	13	15	17	14	
	<b>DE</b>	-13	05-03	-4	11	02-01	-6	-1	-1	-5	-3	-5	-3	-1	-4	-3	-3	-1	
	<b>EE<sup>(n)</sup></b>	-5	08-02	15	39	03-05	28	30	22	13	6	12	16	18	14	15	24	39	
	<b>EL</b>	-33	12-00	11	47	05-99	13	23	13	21	14	7	-4	-8	-12	-6	-14	-18	
	<b>ES</b>	3	05-01	18	41	04-00	15	19	18	11	16	12	6	14	14	15	8	11	
	<b>FR</b>	-31	06-97	1	21	06-98	-2	6	3	2	0	4	1	4	2	0	0	4	
	<b>IE</b>	-13	11-04	8	31	04-98	-2	-2	-2	7	2	2	-11	-13	7	-2	-8	3	
	<b>IT</b>	-8	04-03	11	34	06-00	14	0	10	2	4	-2	3	2	6	-3	-2	0	
	<b>CY<sup>(n)</sup></b>	-5	11-02	4	25	05-02	9	3	2	2	2	3	-2	-2	-1	-1	2	1	
	<b>LV<sup>(n)</sup></b>	-2	12-03	7	18	03-05	15	16	14	8	7	5	5	5	5	10	13	18	
	<b>LT<sup>(n)</sup></b>	-42	12-02	-9	26	05-04	0	26	8	2	10	14	24	-12	-10	2	7	-5	
	<b>HU<sup>(n)</sup></b>	-17	12-03	-1	12	05-04	8	12	6	-2	-1	-4	-4	-5	-11	-2	3	4	
	<b>NL</b>	-4	03-05	19	40	01-99	8	8	5	5	6	6	5	10	6	8	9	-4	
	<b>AT</b>	-6	01-04	9	27	09-98	8	8	8	9	12	11	7	8	6	8	5	3	
	<b>PL<sup>(n)</sup></b>	-13	07-04	-8	-2	02-05	-9	-4	-6	-13	-2	-7	-5	-4	-8	-8	-2	-6	
	<b>PT</b>	-24	01-03	3	37	08-03	-15	-15	-20	-2	-11	-21	-14	-9	-5	-10	-7	-6	
	<b>SI<sup>(n)</sup></b>	-11	10-03	7	24	05-02	8	12	13	10	21	3	7	5	11	17	23	22	
	<b>SK<sup>(n)</sup></b>	-70	12-04	-44	-9	07-02	-47	-58	-57	-53	-42	-52	-61	-65	-70	-34	-39	-34	
	<b>FI</b>	-31	11-96	24	82	07-00	-15	8	5	24	17	4	3	1	10	-12	24	11	
	<b>SE</b>	-35	11-01	11	62	09-00	-6	-8	6	5	-3	-7	9	1	3	3	2	11	
	<b>UK</b>	-17	12-02	18	33	06-98	19	16											

TABLE 4: Consumer opinion on economic and financial conditions (s.a.)<sup>(a)(b)</sup>

		Since 01/1990						2004						2005					
		Min.		Ave.		Max.		Apr.	May	June	July	Aug.	Sep.	Oct.	Nov.	Dec.	Jan.	Feb.	Mar.
		Value	Date	Value	Date	Value	Date												
CONSUMER CONFIDENCE INDICATOR	<b>EU</b>	-27	03-93	-11	2	12-00	-12	-13	-12	-12	-12	-11	-11	-10	-10	-10	-10	-10	
	<b>Euro area</b>	-29	07-93	-12	2	04-00	-14	-15	-14	-14	-14	-13	-13	-13	-13	-13	-13	-14	
	<b>BE</b>	-27	08-93	-6	17	12-00	-4	-6	-1	-4	-2	-2	-4	-4	-4	-6	-3	-1	
	<b>CZ</b>	-36	03-98	-16	1	04-01	-20	-15	-13	-10	-10	-12	-11	-10	-5	-4	-5	-2	
	<b>DK</b>	-11	10-90	6	17	02-95	11	10	11	11	11	13	11	13	14	14	16	17	
	<b>DE</b>	-28	10-93	-11	6	05-00	-17	-18	-15	-17	-18	-15	-18	-17	-16	-12	-15	-18	
	<b>EE</b>	-56	04-93	-24	0	03-03	-16	-21	-18	-14	-14	-11	-11	-7	-11	-12	-10	-5	
	<b>EL</b>	-44	07-03	-30	-6	04-00	-18	-22	-23	-26	-28	-26	-25	-27	-28	-32	-32	-33	
	<b>ES</b>	-37	10-92	-10	6	03-00	-8	-9	-11	-11	-11	-13	-11	-10	-9	-9	-10	-10	
	<b>FR<sup>(d)</sup></b>	-34	08-93	-18	4	01-01	-14	-17	-18	-15	-13	-11	-11	-13	-13	-17	-14	-14	
	<b>IE</b>	-31	03-93	-5	19	01-00	-6	-6	-6	3	3	6	9	2	8	7	4	7	
	<b>IT</b>	-38	04-93	-13	2	06-01	-18	-19	-19	-20	-20	-20	-18	-14	-16	-16	-18	-18	
	<b>CY</b>	-43	07-04	-28	-14	06-01	-34	-34	-41	-43	-40	-37	-35	-38	-41	-34	-36	-36	
	<b>LV</b>	-45	02-93	-25	-7	09-01	-19	-19	-16	-14	-13	-18	-19	-20	-19	-16	-12	-11	
	<b>LT</b>	-33	05-01	-15	-2	10-04	-13	-13	-8	-7	-7	-3	-2	-2	-3	-5	-4	-5	
	<b>LU<sup>(n)</sup></b>	-5	11-02	4	14	02-02	-1	1	5	5	4	7	5	4	6	4	1	2	
	<b>HU</b>	-58	04-95	-29	0	08-02	-31	-28	-24	-25	-26	-24	-24	-25	-23	-21	-21	-24	
	<b>NL</b>	-19	07-93	4	31	03-00	-8	-10	-6	-3	1	1	-3	-3	-8	-4	-4	-3	
	<b>AT</b>	-16	04-96	-1	11	07-00	-3	-5	-2	-1	-2	-3	-1	-3	-3	1	-3	-2	
	<b>PL</b>	-41	05-01	-31	-18	03-05	-30	-25	-23	-26	-21	-24	-24	-22	-19	-20	-19	-18	
	<b>PT<sup>(e)</sup></b>	-49	03-03	-22	-1	07-91	-38	-35	-31	-31	-32	-32	-34	-34	-36	-35	-34	-31	
<b>SI</b>	-29	06-99	-19	-9	10-04	-22	-19	-19	-18	-15	-17	-9	-14	-18	-20	-13	-15		
<b>SK</b>	-50	08-99	-32	-12	12-04	-26	-26	-22	-22	-22	-25	-25	-16	-12	-13	-13	-13		
<b>FI</b>	6	11-01	15	23	02-00	13	14	15	12	17	15	14	14	16	13	16	17		
<b>SE</b>	-10	09-96	8	25	03-00	6	6	6	4	6	6	8	7	10	8	8	7		
<b>UK</b>	-28	10-92	-8	7	10-97	-2	-5	-5	-3	-4	-3	-2	0	0	0	0	3		
FINANCIAL SITUATION OF HOUSEHOLDS OVER NEXT 12 MONTHS	<b>EU</b>	-10	12-93	-1	5	04-01	-1	-2	-1	-2	-2	-1	-1	-1	0	0	0		
	<b>Euro area</b>	-11	07-93	-2	5	03-00	-3	-4	-3	-4	-4	-3	-4	-4	-3	-2	-3		
	<b>BE</b>	-9	12-93	2	13	08-00	7	5	7	5	6	5	8	5	6	5	7	6	
	<b>CZ</b>	-32	02-98	-10	2	05-02	-22	-17	-16	-7	-10	-13	-9	-6	-4	-4	-3	-3	
	<b>DK</b>	2	12-90	12	39	10-00	19	16	16	15	15	14	11	14	14	15	15	17	
	<b>DE</b>	-15	02-94	-5	4	05-00	-7	-8	-7	-8	-8	-7	-8	-6	-5	-2	-3	-4	
	<b>EE</b>	-38	04-93	-11	11	01-03	-7	-18	-10	-7	-6	-3	-2	3	-2	-3	-2	3	
	<b>EL</b>	-31	08-92	-15	10	04-00	-2	-8	-9	-11	-8	-8	-10	-14	-13	-17	-17	-19	
	<b>ES</b>	-16	10-92	1	10	10-99	0	0	-1	-1	-1	-2	-1	-1	2	0	-1	-1	
	<b>FR<sup>(d)</sup></b>	-12	12-95	-1	6	01-01	0	-1	-1	-2	-1	1	0	-2	-1	-3	-2	-1	
	<b>IE</b>	-13	02-93	1	16	01-00	-4	-1	-2	0	2	2	6	0	4	4	2	4	
	<b>IT</b>	-15	04-93	-1	7	07-01	-3	-3	-3	-4	-5	-4	-4	-3	-3	-4	-4	-4	
	<b>CY</b>	-36	06-04	-13	0	05-01	-25	-24	-36	-36	-32	-27	-24	-27	-29	-24	-27	-25	
	<b>LV</b>	-29	09-93	-8	10	08-02	-5	-6	-1	2	1	1	-2	-2	-3	2	3	5	
	<b>LT</b>	-10	05-01	-1	6	10-04	0	-4	3	2	2	6	6	6	4	2	3	4	
	<b>LU<sup>(n)</sup></b>	2	11-03	6	12	06-02	4	4	4	6	5	5	5	6	6	5	5	8	
	<b>HU</b>	-63	04-95	-22	16	08-02	-20	-17	-15	-14	-14	-12	-10	-12	-12	-7	-7	-10	
	<b>NL</b>	-11	12-04	4	16	12-99	-3	-1	-2	-2	1	-2	-5	-5	-11	-5	-5	-6	
	<b>AT</b>	-18	04-96	-5	4	04-99	-3	-5	-3	-3	-7	-4	-4	-9	-5	-1	-1	-2	
	<b>PL</b>	-20	08-01	-12	-3	03-05	-11	-12	-9	-13	-7	-7	-7	-6	-3	-5	-3	-3	
	<b>PT<sup>(e)</sup></b>	-26	03-03	-7	11	01-92	-17	-15	-13	-13	-16	-15	-15	-16	-17	-16	-18	-15	
<b>SI</b>	-30	06-99	-11	-2	11-96	-14	-8	-12	-12	-12	-10	-2	-7	-4	-7	-4	-6		
<b>SK</b>	-44	08-99	-25	-8	02-05	-31	-31	-24	-24	-24	-24	-23	-12	-10	-11	-8	-10		
<b>FI</b>	-8	04-93	6	13	10-04	10	10	10	11	11	12	13	12	12	10	13	11		
<b>SE</b>	-13	09-96	7	18	07-02	12	11	12	12	11	13	14	13	16	15	12	16		
<b>UK</b>	-23	03-90	2	16	09-02	10	8	8	8	7	7	9	10	8	10	10	11		
GENERAL ECONOMIC SITUATION OVER NEXT 12 MONTHS	<b>EU</b>	-32	03-93	-12	1	04-00	-14	-15	-14	-14	-14	-12	-12	-12	-12	-11	-10		
	<b>Euro area</b>	-35	03-93	-13	4	04-00	-14	-16	-14	-14	-14	-12	-13	-14	-13	-13	-13		
	<b>BE</b>	-46	07-93	-11	20	06-00	2	-4	5	-2	4	3	-1	-3	-2	-5	-1	2	
	<b>CZ</b>	-40	09-97	-12	8	10-95	-24	-14	-12	-8	-7	-11	-9	-10	-2	2	2	2	
	<b>DK</b>	-23	02-99	-2	23	07-01	11	8	6	2	6	5	7	7	6	6	10	13	
	<b>DE</b>	-41	03-93	-16	6	02-99	-21	-23	-18	-22	-24	-21	-23	-22	-20	-16	-19	-23	
	<b>EE</b>	-38	04-93	-4	25	03-03	-4	-8	-6	2	4	8	8	10	6	8	11	11	
	<b>EL</b>	-37	12-03	-16	17	01-00	-4	-8	-11	-15	-16	-9	-11	-16	-15	-20	-21	-19	
	<b>ES</b>	-38	10-92	-5	11	08-97	0	-2	-5	-2	-7	-6	-5	-6	-2	-2	-4	-5	
	<b>FR<sup>(d)</sup></b>	-37	01-91	-17	5	01-01	-19	-18	-17	-14	-11	-7	-11	-15	-14	-18	-15	-10	
	<b>IE</b>	-33	12-02	-2	22	01-00	-10	-10	-9	2	0	6	11	2	7	6	0	6	
	<b>IT</b>	-40	04-93	-8	13	02-95	-15	-17	-17	-18	-18	-16	-11	-6	-10	-11	-12	-12	
	<b>CY</b>	-46	06-04	-22	-6	05-01	-34	-33	-46	-45	-39	-33	-29	-35	-41	-32	-31	-33	
	<b>LV</b>	-27	06-95	-7	11	05-03	-2	-3	0	4	3	1	-2	-6	-4	-1	6	8	
	<b>LT</b>	-19	05-01	2	15	10-04	-1	0	6	5	7	13	15	13	11	8	10	8	
	<b>LU<sup>(n)</sup></b>	-27	02-03	-6	7	06-02	-11	-8	-1	0	-4	1	-1	-4	-3	-2	-9	-4	
	<b>HU</b>	-53	04-95	-15	19	08-02	-20	-11	-9	-9	-12	-7	-8	-10	-8	-5	-5	-8	
	<b>NL</b>	-42	03-93	-8	26	03-00	-8	-12	-7	0	0	-3	-6	-9	-16	-13	-6	-4	
	<b>AT</b>	-26	04-96	-6	8	11-99	-2	-4	-4	1	-5	-8	-6	-7	-8	-2	-6	-4	
	<b>PL</b>	-35	05-01	-23	-7	03-05	-33	-23	-21	-25	-16	-15	-17	-15	-10	-9	-7	-7	
	<b>PT<sup>(e)</sup></b>	-52	03-03	-16	12	01-92	-32	-28	-24	-25	-23	-23	-27	-27	-30	-29	-24	-18	
<b>SI</b>	-21	02-04	-9	7	10-04	-15	-5	-10	-13	-9	-9	7	-2	-3	-5	0	-4		
<b>SK</b>	-51	09-99	-32	-3	03-05	-28	-27	-20	-20	-19	-24	-21	-12	-6	-8	-6	-3		
<b>FI</b>	-24	04-91	6	28	01-95	8	4	6	6	9	6	5	4	6	3	5	8		
<b>SE</b>	-30	09-96	1	20	03-00	2	-2	-2	-3	2	1	3	3	3	0	1	-1		
<b>UK</b>	-33	03-90	-9	14	06-97	-12	-18	-18	-14	-16	-14	-12	-9	-7	-11				

TABLE 4 (continued) : Consumer opinion on economic and financial conditions (s.a.) <sup>(a)</sup>

		Since 01/1990						2004						2005					
		Min.		Ave.		Max.		Apr.	May	June	July	Aug.	Sep.	Oct.	Nov.	Dec.	Jan.	Feb.	Mar.
		Value	Date	Value	Date	Value	Date												
SAVINGS	<b>EU</b>	-15	08-93	-5	4	04-01	-4	-5	-5	-5	-4	-4	-4	-2	-3	-3	-4	-4	
OVER NEXT	<b>Euro area</b>	-14	08-93	-5	4	03-01	-8	-9	-9	-9	-7	-7	-8	-5	-6	-7	-8	-9	
12 MONTHS	<b>BE</b>	-2	12-93	13	31	06-98	13	13	16	12	12	16	15	13	17	15	16	16	
Component of the consumer confidence indicator	<b>CZ</b>	-16	03-98	-4	11	08-03	-4	0	6	4	5	-1	-1	2	2	6	2	5	
	<b>DK</b>	-3	01-90	22	38	03-05	24	27	27	31	29	36	36	35	36	37	37	38	
	<b>DE</b>	-5	03-03	8	23	08-90	0	1	2	-2	2	2	1	3	4	5	5	0	
	<b>EE</b>	-69	10-93	-51	-11	08-01	-41	-47	-43	-40	-41	-40	-40	-36	-39	-37	-36	-28	
	<b>EL</b>	-57	07-95	-44	-23	01-00	-42	-41	-37	-37	-37	-42	-37	-38	-44	-47	-47	-45	
	<b>ES</b>	-34	01-90	-19	0	07-00	-25	-25	-27	-31	-25	-29	-25	-24	-23	-25	-24	-20	
	<b>FR <sup>(d)</sup></b>	-36	03-96	-23	-7	04-04	-7	-14	-14	-11	-10	-9	-8	-9	-12	-16	-15	-14	
	<b>IE</b>	-32	03-93	-2	28	02-02	13	14	10	16	18	19	21	15	19	21	20	21	
	<b>IT</b>	-39	10-04	-15	2	03-91	-37	-38	-38	-37	-38	-38	-39	-29	-32	-30	-35	-36	
	<b>CY</b>	-55	06-02	-41	-14	06-01	-39	-39	-46	-50	-47	-42	-47	-47	-46	-39	-44	-38	
	<b>LV</b>	-90	03-96	-56	13	01-94	-51	-52	-47	-50	-43	-59	-53	-54	-53	-52	-50	-50	
	<b>LT</b>	-56	05-01	-47	-39	12-04	-46	-49	-45	-42	-46	-41	-41	-42	-39	-42	-40	-43	
	<b>LU <sup>(a)</sup></b>	40	07-03	47	58	04-02	45	47	48	46	45	52	47	51	54	46	49	45	
	<b>HU</b>	-70	11-95	-54	-19	01-00	-50	-50	-45	-47	-46	-45	-46	-47	-45	-45	-45	-44	
	<b>NL</b>	22	03-05	38	55	10-99	30	29	30	32	32	32	29	28	26	32	24	22	
	<b>AT</b>	-11	11-00	32	55	03-02	26	28	31	27	30	30	30	35	31	33	27	27	
	<b>PL</b>	-69	09-03	-51	-24	09-01	-48	-48	-47	-48	-45	-60	-53	-50	-52	-53	-51	-49	
	<b>PT <sup>(e)</sup></b>	-51	02-05	-33	-14	01-92	-46	-45	-46	-47	-48	-46	-50	-50	-50	-50	-51	-51	
	<b>SI</b>	-52	06-99	-29	-15	06-03	-27	-30	-27	-23	-20	-23	-24	-25	-26	-25	-25	-18	
	<b>SK</b>	-70	08-01	-42	-29	08-00	-45	-44	-41	-42	-35	-44	-46	-38	-35	-36	-37	-41	
<b>FI</b>	19	01-96	37	53	05-04	45	53	53	46	53	53	48	52	52	46	50	51		
<b>SE</b>	11	06-98	29	46	06-00	30	32	30	28	27	29	31	30	31	28	30	33		
<b>UK</b>	-26	10-92	-6	17	03-05	15	12	8	12	13	15	14	17	14	15	14	17		
UNEMPLOYMENT	<b>EU</b>	-2	12-00	26	56	03-93	28	30	28	28	27	26	26	26	25	26	27		
OVER NEXT	<b>Euro area</b>	-3	01-01	28	60	08-93	31	33	31	30	30	28	29	29	29	28	30		
12 MONTHS	<b>BE</b>	-19	12-00	27	63	10-93	38	39	30	31	29	30	31	31	35	37	33		
Component of the consumer confidence indicator	<b>CZ</b>	4	05-01	36	64	03-99	32	30	32	30	28	23	24	24	17	21	19		
	<b>DK</b>	-19	11-97	8	38	12-92	10	10	5	5	7	5	10	5	2	2	-2		
	<b>DE</b>	-3	01-01	30	58	10-93	40	41	37	37	40	36	41	42	41	34	43		
	<b>EE</b>	6	03-05	35	82	10-92	12	11	13	11	12	9	11	7	9	14	14		
	<b>EL</b>	24	04-90	44	62	12-98	25	30	34	44	50	43	42	42	40	43	43		
	<b>ES</b>	-8	03-00	18	67	01-93	6	10	12	10	11	15	15	9	12	8	10		
	<b>FR <sup>(d)</sup></b>	-14	01-01	31	64	03-03	32	36	39	35	32	29	26	25	26	32	25		
	<b>IE</b>	-29	12-99	16	58	04-92	24	24	23	5	8	4	2	8	-1	4	7		
	<b>IT</b>	-2	06-01	27	70	04-93	18	18	19	20	18	20	16	18	20	19	21		
	<b>CY</b>	25	10-03	35	49	12-04	37	39	35	43	44	44	39	44	49	41	42		
	<b>LV</b>	6	02-05	28	54	01-93	20	17	14	13	11	15	19	17	14	13	6		
	<b>LT</b>	-15	11-04	12	47	05-01	3	0	-6	-6	-7	-10	-13	-15	-11	-12	-14		
	<b>LU <sup>(a)</sup></b>	14	06-02	34	48	12-03	42	41	29	31	30	30	32	37	35	34	42		
	<b>HU</b>	-3	07-98	27	59	02-93	36	31	29	31	31	32	32	30	27	26	27		
	<b>NL</b>	-35	07-98	18	77	03-93	51	57	46	41	29	23	31	26	32	28	28		
	<b>AT</b>	-9	11-00	27	49	12-96	33	38	32	30	27	30	26	31	28	27			
	<b>PL</b>	11	01-05	40	65	05-01	27	16	15	19	15	15	19	17	11	11			
	<b>PT <sup>(e)</sup></b>	-10	08-97	32	73	10-93	56	52	41	40	42	42	44	46	46	46			
	<b>SI</b>	7	09-01	25	43	02-04	32	32	27	25	21	26	17	21	38	40			
	<b>SK</b>	-4	01-05	28	68	08-99	-1	1	2	3	12	9	9	4	-2	-4			
<b>FI</b>	-31	01-95	-1	42	07-91	12	12	11	13	4	13	11	10	5	7				
<b>SE</b>	-26	03-00	7	39	11-01	19	18	18	22	17	19	16	17	11	10				
<b>UK</b>	-11	04-98	21	53	02-91	22	21	20	20	21	21	19	18	15	16				
FINANCIAL SITUATION OF HOUSEHOLDS OVER LAST 12 MONTHS	<b>EU</b>	-19	01-94	-10	-2	05-00	-13	-13	-12	-13	-11	-12	-11	-11	-11	-11			
	<b>Euro area</b>	-20	02-03	-10	-1	05-90	-16	-16	-15	-16	-14	-14	-13	-14	-14	-14			
	<b>BE</b>	-16	12-93	-5	4	11-00	-6	-4	-3	-7	-4	-5	-7	-3	-4				
	<b>CZ</b>	-30	02-98	-15	-5	05-96	-20	-17	-19	-14	-16	-17	-17	-16	-13				
	<b>DK</b>	-5	04-01	6	16	02-05	14	9	11	12	13	12	11	12	14				
	<b>DE</b>	-31	12-02	-12	4	05-90	-15	-19	-16	-19	-14	-12	-13	-12	-11				
	<b>EE</b>	-54	04-93	-18	3	03-05	-3	-7	-7	-8	-8	-8	-6	-2	-4				
	<b>EL</b>	-43	01-93	-28	-6	04-00	-26	-27	-27	-26	-26	-23	-25	-27	-30				
	<b>ES</b>	-28	01-94	-8	4	04-00	-8	-9	-9	-9	-10	-11	-8	-8	-7				
	<b>FR <sup>(d)</sup></b>	-18	06-96	-9	-2	01-01	-13	-11	-11	-11	-11	-12	-9	-10	-11				
	<b>IE</b>	-25	02-93	-7	11	04-00	-9	-7	-10	-5	-5	-6	-4	-6	-2				
	<b>IT</b>	-30	02-04	-14	-1	05-90	-26	-26	-24	-23	-24	-22	-21	-25	-25				
	<b>CY</b>	-34	07-04	-16	-6	07-03	-21	-22	-31	-34	-28	-27	-25	-27	-26				
	<b>LV</b>	-57	01-93	-23	-4	08-02	-9	-10	-12	-7	-8	-10	-10	-11	-14				
	<b>LT</b>	-29	06-01	-15	-1	10-04	-7	-8	-8	-7	-7	-7	-1	-5	-4				
	<b>LU <sup>(a)</sup></b>	-1	11-03	2	9	01-02	1	0	-1	0	0	-1	0	2	3				
	<b>HU</b>	-65	11-95	-36	0	08-02	-29	-26	-26	-28	-27	-27	-28	-24	-26				
	<b>NL</b>	-25	03-05	1	17	02-00	-21	-17	-15	-16	-16	-20	-19	-20	-21				
	<b>AT</b>	-23	11-02	-13	-2	08-99	-17	-19	-22	-20	-18	-20	-18	-18	-20				
	<b>PL</b>	-34	05-01	-26	-15	03-05	-20	-20	-21	-23	-16	-21	-19	-18	-18				
	<b>PT <sup>(e)</sup></b>	-29	04-03	-13	3	01-92	-21	-21	-20	-19	-20	-19	-19	-19	-20				
	<b>SI</b>	-36	06-99	-27	-17	01-05	-28	-22	-25	-27	-25	-22	-24	-27	-25				
	<b>SK</b>	-43	10-99	-29	-16	03-05	-34	-30	-27	-29	-30	-30	-28	-23	-20				
	<b>FI</b>	-22	04-93	0	9	03-00	6	5	6	7	7	6	6	8	7				
	<b>SE</b>	-13	11-95	2	10	06-00	5	4	4	4	5	4	5	4	7				
	<b>UK</b>	-32	05-90	-8	7	06-02	-2	-1	-2	-2	-1	-3	-2	-1	-3				



TABLE 4 (continued):

Consumer opinion on economic and financial conditions (s.a.)<sup>(a)</sup>

		Since 01/1990					2004						2005						
		Min.		Ave.		Max.		Apr.	May	June	July	Aug.	Sep.	Oct.	Nov.	Dec.	Jan.	Feb.	Mar.
		Value	Date	Value	Date	Value	Date												
GENERAL	<b>EU</b>	-55	03-93	-27	-4	05-00	-34	-35	-34	-32	-31	-31	-30	-32	-30	-29	-28	-29	
ECONOMIC	<b>Euro area</b>	-58	07-93	-28	-2	05-00	-39	-40	-38	-37	-35	-34	-34	-36	-34	-34	-33	-34	
SITUATION	<b>BE</b>	-61	08-93	-25	22	12-00	-23	-24	-18	-23	-15	-19	-21	-19	-19	-20	-14	-11	
OVER LAST	<b>CZ</b>	-54	12-97	-22	3	10-95	-28	-25	-23	-27	-20	-23	-22	-19	-17	-11	-11	-7	
12 MONTHS	<b>DK</b>	-25	04-93	-1	22	09-95	5	9	7	9	8	9	9	10	15	14	16	19	
	<b>DE</b>	-60	05-03	-27	12	01-90	-44	-44	-40	-42	-40	-39	-40	-41	-37	-33	-34	-39	
	<b>EE</b>	-72	10-92	-12	20	01-03	12	9	1	3	4	6	8	8	7	11	7	12	
	<b>EL</b>	-50	05-90	-31	6	05-00	-29	-32	-32	-30	-26	-22	-25	-30	-31	-33	-33	-30	
	<b>ES</b>	-61	08-93	-16	13	03-00	-12	-13	-16	-15	-18	-16	-16	-16	-12	-13	-15	-16	
	<b>FR<sup>(d)</sup></b>	-57	10-96	-35	-1	01-01	-39	-44	-44	-40	-38	-36	-34	-36	-36	-39	-37	-37	
	<b>IE</b>	-59	03-93	-5	42	08-99	-20	-20	-19	-3	-8	-1	2	-2	5	7	4	7	
	<b>IT</b>	-74	04-93	-38	-8	05-90	-53	-53	-51	-51	-48	-46	-44	-50	-48	-48	-46	-47	
	<b>CY</b>	-41	07-04	-25	-12	01-02	-33	-32	-37	-41	-34	-31	-35	-35	-39	-32	-31	-32	
	<b>LV</b>	-59	01-93	-25	3	05-03	-1	-4	-5	-3	-2	-11	-12	-14	-16	-11	-6	-7	
	<b>LT</b>	-41	05-01	-12	5	10-04	-1	-1	0	1	0	3	5	3	3	2	4	2	
	<b>LU<sup>(n)</sup></b>	-36	12-03	-23	-5	06-02	-33	-27	-23	-21	-22	-22	-17	-17	-21	-15	-24	-20	
	<b>HU</b>	-71	04-95	-33	6	09-02	-36	-28	-25	-24	-26	-25	-26	-26	-26	-22	-24	-22	
	<b>NL</b>	-73	03-03	-12	45	03-00	-51	-50	-45	-40	-39	-37	-40	-41	-45	-44	-40	-35	
	<b>AT</b>	-50	02-97	-24	8	07-00	-29	-31	-29	-25	-27	-28	-24	-22	-28	-22	-28	-25	
	<b>PL</b>	-55	09-01	-43	-19	03-05	-43	-38	-37	-37	-32	-34	-31	-30	-24	-22	-21	-19	
	<b>PT<sup>(e)</sup></b>	-60	03-03	-24	13	10-91	-50	-49	-47	-43	-43	-42	-43	-45	-50	-51	-51	-49	
	<b>SI</b>	-39	09-98	-29	-19	02-00	-34	-22	-26	-29	-26	-26	-19	-25	-29	-26	-19	-22	
	<b>SK</b>	-69	10-99	-44	-11	03-05	-36	-33	-31	-31	-29	-33	-31	-27	-19	-22	-16	-11	
	<b>FI</b>	-65	01-92	-4	30	08-98	4	1	3	3	7	4	5	5	6	4	7	7	
	<b>SE</b>	-25	04-03	-6	25	03-00	-10	-11	-10	-9	-5	-8	-4	-1	-2	1	-2	-4	
	<b>UK</b>	-67	11-92	-25	5	10-97	-17	-19	-22	-17	-21	-21	-22	-21	-18	-17	-14	-13	
SAVINGS	<b>EU</b>	:	:	:	:	:	:	:	:	:	:	:	:	:	:	:	:	:	
AT PRESENT <sup>(c)</sup>	<b>Euro area</b>	:	:	:	:	:	:	:	:	:	:	:	:	:	:	:	:	:	
	<b>BE</b>	-45	12-03	45	70	02-01	-37	-22	-18	-20	-20	-21	-22	-26	-25	-27	-24	-29	
	<b>CZ</b>	-35	01-03	-15	15	03-01	-20	-15	-15	-13	-16	-16	-17	-20	-21	-19	-19	-18	
	<b>DK</b>	51	01-90	65	78	07-92	66	69	71	68	67	72	74	75	74	73	68	71	
	<b>DE</b>	29	11-92	45	61	09-02	46	47	48	47	41	44	43	46	46	45	45	42	
	<b>EE</b>	-58	09-96	-37	-14	08-01	-32	-36	-36	-28	-35	-24	-29	-24	-29	-29	-27	-23	
	<b>EL</b>	-64	10-01	-45	-18	01-00	-58	-56	-54	-57	-56	-61	-54	-54	-58	-61	-64	-61	
	<b>ES</b>	-33	12-03	30	59	08-96	-21	-21	-25	-29	-25	-29	-24	-20	-27	-20	-18	-19	
	<b>FR<sup>(d)</sup></b>	8	11-04	43	61	06-95	12	13	13	13	13	12	12	8	10	15	14	15	
	<b>IE</b>	-2	03-93	20	56	12-01	23	21	20	22	25	32	28	27	39	38	35	44	
	<b>IT</b>	26	06-04	45	59	06-96	31	28	26	29	34	42	35	38	40	40	46	47	
	<b>CY</b>	-38	07-04	-13	9	09-01	-34	-23	-33	-38	-18	-22	-26	-22	-12	-8	-3	9	
	<b>LV</b>	-78	12-95	-58	-29	09-01	-52	-51	-50	-50	-47	-58	-51	-52	-54	-50	-50	-49	
	<b>LT</b>	-48	05-01	-37	-28	05-02	-40	-45	-39	-36	-39	-35	-34	-38	-35	-36	-40	-39	
	<b>LU<sup>(n)</sup></b>	42	08-03	53	62	01-03	56	55	57	53	52	58	56	52	58	53	59	57	
	<b>HU</b>	-83	11-95	-65	-28	12-00	-54	-53	-47	-53	-52	-51	-52	-53	-58	-54	-51	-54	
	<b>NL</b>	47	06-91	61	70	09-96	62	65	64	66	68	65	64	68	70	64	61	62	
	<b>AT</b>	17	12-96	41	64	09-02	51	54	55	54	56	55	55	55	56	57	52	51	
	<b>PL</b>	-49	09-01	-38	-29	06-01	-34	-37	-33	-35	-35	-36	-40	-34	-31	-38	-35	-30	
	<b>PT<sup>(e)</sup></b>	-63	02-05	-39	-13	01-92	-59	-59	-58	-56	-60	-58	-61	-62	-63	-61	-63	-62	
	<b>SI</b>	-25	09-97	-13	-1	08-04	-10	-3	-7	-2	-1	-6	-6	-2	-4	-7	-9	-5	
	<b>SK</b>	-55	10-04	-46	-36	03-00	-49	-50	-50	-51	-51	-53	-55	-49	-49	-50	-50	-46	
	<b>FI</b>	-23	04-94	3	22	10-92	13	13	13	11	11	13	14	14	16	14	15	16	
	<b>SE</b>	-9	09-01	6	20	01-00	-2	-2	-1	1	0	-1	0	1	3	-2	-1	-1	
	<b>UK</b>	-16	03-03	11	36	05-90	18	11	19	21	24	22	25	23	22	25	24	28	
MAJOR	<b>EU</b>	-21	07-93	-16	-10	03-00	-19	-17	-18	-19	-18	-18	-18	-18	-17	-17	-17	-17	
PURCHASES	<b>Euro area</b>	-21	07-93	-17	-12	03-00	-21	-19	-20	-20	-19	-19	-19	-20	-19	-18	-18	-18	
OVER NEXT	<b>BE</b>	-29	10-96	-16	-6	10-03	-13	-10	-10	-11	-11	-14	-10	-16	-17	-14	-14	-14	
12 MONTHS	<b>CZ</b>	-36	01-01	-25	-7	05-02	-20	-11	-24	-13	-17	-18	-16	-15	-10	-14	-11	-17	
	<b>DK</b>	-14	01-93	-7	1	11-04	1	-1	-2	-2	-2	-1	1	1	-2	0	0	0	
	<b>DE</b>	-39	02-03	-26	-14	01-90	-36	-32	-34	-35	-33	-33	-33	-33	-30	-30	-30	-29	
	<b>EE</b>	-64	10-92	-26	-5	04-03	-11	-20	-17	-18	-22	-24	-16	-13	-9	-10	-12	-15	
	<b>EL</b>	-50	11-92	-23	5	06-03	-30	-30	-33	-37	-33	-22	-24	-23	-26	-23	-21	-21	
	<b>ES</b>	-48	11-93	-24	-7	11-00	-22	-21	-26	-20	-20	-25	-20	-26	-25	-23	-26	-23	
	<b>FR<sup>(d)</sup></b>	-6	04-04	0	1	09-99	-6	-3	-4	-5	-5	-5	-4	-5	-5	-3	-4	-5	
	<b>IE</b>	-20	05-93	-9	2	12-00	-3	-6	-5	-4	-6	-6	-4	-6	-6	-6	-4	-3	
	<b>IT</b>	-23	10-92	-18	-9	02-05	-14	-14	-13	-15	-13	-13	-14	-13	-12	-13	-9	-11	
	<b>CY</b>	-7	03-04	13	35	03-03	-4	-4	8	13	16	14	15	17	17	7	7	-4	
	<b>LV</b>	-84	03-96	-44	6	03-05	-6	-10	-10	-5	-4	-4	-4	-7	0	2	-1	6	
	<b>LT</b>	-19	12-02	-11	-1	11-04	-6	-6	-4	-2	-2	-3	-5	-1	-4	-6	-9	-5	
	<b>LU<sup>(n)</sup></b>	-19	08-03	-12	-5	01-02	-14	-12	-15	-14	-11	-16	-16	-12	-13	-10	-11	-10	
	<b>HU</b>	-69	06-95	-38	-8	08-02	-28	-27	-26	-27	-27	-25	-25	-22	-26	-23	-22	-22	
	<b>NL</b>	-25	03-03	-13	-4	11-98	-19	-17	-20	-15	-20	-17	-18	-18	-18	-17	-17	-20	
	<b>AT</b>	-26	11-04	-16	-4	11-00	-21	-21	-22	-24	-19	-19	-22	-26	-21	-22	-22	-19	
	<b>PL</b>	-25	09-01	-8	1	09-04	-5	-7	-3	-6	-5	1	-2	-1	-4	-3	-6	-7	
	<b>PT<sup>(e)</sup></b>	-23	11-95	-8	14	06-90	-10	-12	-11	-11	-10	-11	-13	-12	-11	-9	-14	-15	
	<b>SI</b>	-18	03-02	-5	4	04-00	-5	-3	-3	-4	-8	-8	-3	-9	-4	-2	-2	-4	
	<b>SK</b>	-4																	

TABLE 4 (continued) :

Consumer opinion on economic and financial conditions (s.a.)<sup>(a)</sup>

		Since 01/1990						2004						2005					
		Min.		Ave.		Max.		Apr.	May	June	July	Aug.	Sep.	Oct.	Nov.	Dec.	Jan.	Feb.	Mar.
		Value	Date	Value	Date	Value	Date												
MAJOR PURCHASES AT PRESENT	EU	-22	07-93	-10	6	01-00	-13	-16	-16	-16	-16	-16	-15	-15	-15	-13	-12	-12	
	<b>Euro area</b>	-28	03-03	-14	6	03-99	-21	-23	-22	-23	-22	-21	-21	-22	-23	-20	-19	-19	
	BE	-40	06-97	-5	26	12-00	11	11	13	10	10	14	16	17	20	18	19	19	
	CZ	-33	05-95	-1	34	07-03	7	8	9	15	10	8	11	4	9	9	14	13	
	DK	-27	01-93	-7	10	09-97	-9	-7	-9	-1	0	-9	-3	-3	0	0	-5	1	
	DE	-31	11-02	-11	6	04-99	-18	-21	-16	-22	-19	-18	-19	-20	-19	-15	-14	-13	
	EE	0	04-01	13	48	04-04	48	29	26	27	24	26	30	31	39	36	37	36	
	EL	-67	01-03	-35	-10	01-01	-37	-44	-46	-44	-49	-38	-41	-45	-49	-46	-45	-37	
	ES	-64	06-93	-17	26	11-99	-18	-20	-25	-29	-27	-28	-31	-27	-30	-20	-22	-19	
	FR <sup>(d)</sup>	-39	12-95	-14	14	07-00	-14	-15	-15	-10	-11	-12	-9	-11	-13	-14	-9	-11	
	IE	-22	04-92	14	40	09-97	12	12	9	16	19	19	18	20	19	26	21	28	
	IT	-64	11-96	-33	-2	05-90	-49	-49	-52	-50	-50	-50	-47	-48	-51	-49	-53	-51	
	CY	-19	10-01	1	25	11-04	5	6	-12	9	1	13	11	25	10	5	-3	-9	
	LV	-81	06-96	-44	9	09-01	3	0	1	4	3	-6	-1	-2	-5	4	0	-2	
	LT	-9	05-01	17	41	04-04	41	35	31	33	31	35	31	33	34	30	32	38	
	LU <sup>(n)</sup>	-19	05-03	-9	1	08-04	-12	-12	-18	-1	1	-1	-12	-11	-6	0	-9	-4	
	HU	-87	06-96	-57	-9	10-02	-21	-22	-18	-17	-16	-17	-16	-23	-24	-17	-16	-17	
	NL	-39	04-03	7	54	02-00	-30	-33	-30	-26	-25	-25	-30	-30	-33	-24	-28	-26	
	AT	-14	07-02	8	29	08-99	-8	-7	-9	-8	-7	-9	-10	-6	-3	-6	-7	-6	
	PL	-27	11-01	-11	3	03-04	-3	-13	-6	-8	-7	-12	-9	-9	-7	-3	-8	-5	
PT <sup>(e)</sup>	-58	12-04	-32	-2	01-92	-54	-53	-55	-57	-56	-57	-56	-58	-58	-56	-58	-57		
SI	-50	04-97	-23	10	05-99	-15	-10	-8	-7	-4	-1	-3	-8	-11	-6	-9	-8		
SK	-25	02-04	-10	4	08-99	-22	-21	-21	-23	-15	-20	-18	-14	-15	-13	-13	-15		
FI	-27	04-90	16	39	08-03	33	29	32	31	30	28	23	25	21	27	27	26		
SE	2	11-95	18	33	04-04	33	26	29	20	20	24	25	24	26	28	29	30		
UK	-22	05-90	8	28	11-02	14	11	5	8	5	3	5	7	13	8	14	12		
PRICE TRENDS OVER NEXT 12 MONTHS	EU	6	06-03	23	49	01-91	6	12	13	11	12	10	10	10	7	8	9	8	
	<b>Euro area</b>	3	04-04	23	51	01-91	3	10	10	8	9	8	7	8	6	8	9	9	
	BE	-4	09-02	20	46	10-01	8	15	14	17	12	15	19	18	12	13	14	15	
	CZ	15	02-05	47	72	03-98	55	44	37	35	38	34	35	36	29	17	15	18	
	DK	-29	08-93	-11	28	08-02	-9	-12	-8	-5	-5	-8	-2	-7	-2	-8	-19	-15	
	DE	5	12-04	33	58	03-91	8	14	13	14	13	12	11	7	5	8	8	9	
	EE	23	04-93	48	88	05-04	85	88	71	58	51	51	41	47	56	56	53	51	
	EL	0	03-04	38	60	05-90	2	18	13	16	13	10	23	24	15	17	18	19	
	ES	-4	11-98	14	36	01-02	4	13	15	12	17	17	22	18	19	21	16	18	
	FR <sup>(d)</sup>	-13	08-97	11	54	01-91	7	18	19	13	10	8	4	12	8	10	15	13	
	IE	6	01-94	22	42	10-00	14	19	26	21	22	20	19	22	11	20	20	15	
	IT	-23	12-04	22	62	02-91	-20	-20	-15	-15	-11	-17	-20	-20	-23	-17	-12	-12	
	CY	28	09-03	48	69	09-02	46	42	51	42	42	43	44	43	48	39	38	37	
	LV	16	03-00	32	70	03-04	65	64	56	50	46	46	45	44	46	41	40	38	
	LT	14	02-03	42	77	05-04	73	77	67	66	63	57	54	59	59	55	53	51	
	LU <sup>(n)</sup>	-5	06-03	13	30	03-03	8	15	11	9	16	16	21	19	19	11	20	19	
	HU	34	07-98	51	65	05-95	59	57	53	54	52	53	51	50	51	49	46	46	
	NL	-28	12-02	24	60	01-91	-7	3	3	4	1	4	7	10	14	9	12	16	
	AT	-19	12-95	14	41	09-01	21	21	19	20	25	24	27	31	21	26	23	21	
	PL	16	03-05	34	56	05-04	55	56	49	48	39	36	34	31	27	24	17	16	
PT <sup>(e)</sup>	-9	08-97	32	56	03-03	36	40	30	30	34	36	40	37	38	36	36	37		
SI	16	01-05	43	62	04-00	21	22	31	27	24	20	19	24	22	16	20	19		
SK	23	03-05	52	78	11-02	51	61	47	47	46	41	40	29	28	27	28	23		
FI	-21	12-95	10	40	09-01	10	16	18	17	22	15	16	13	13	20	19	21		
SE	-14	03-05	13	34	04-03	12	22	19	19	18	20	19	15	6	8	9	-14		
UK	5	03-05	27	57	09-90	11	16	19	15	20	18	14	14	10	5	6	5		
PRICE TRENDS OVER LAST 12 MONTHS	EU	-4	03-99	23	46	01-03	32	32	31	30	29	29	27	30	28	28	29	28	
	<b>Euro area</b>	-4	01-99	27	62	01-03	41	42	40	40	38	37	35	38	37	37	38	38	
	BE	-1	06-98	34	55	02-05	49	46	47	50	47	48	51	54	52	54	55	53	
	CZ	-33	08-03	26	63	03-98	-21	-12	-13	-10	-9	-7	-3	-11	-13	-15	-17	-16	
	DK	-51	09-93	-25	-1	02-90	-30	-30	-29	-31	-31	-33	-29	-33	-29	-30	-35	-33	
	DE	-3	03-99	31	74	08-02	28	29	28	29	25	27	25	25	23	20	23	22	
	EE	-1	04-03	33	52	09-96	35	39	43	46	49	49	44	52	51	52	48	52	
	ES	5	06-99	40	76	08-03	64	69	67	70	73	62	64	69	68	67	67	66	
	EL	-5	06-97	30	65	03-03	54	54	55	52	52	53	53	54	52	51	52	53	
	FR <sup>(d)</sup>	-23	01-99	12	54	01-04	46	47	46	50	46	42	39	45	46	47	49	51	
	IE	-3	07-97	29	66	12-02	46	41	48	40	46	45	46	51	40	45	42	40	
	IT	0	05-97	36	70	11-03	56	54	49	43	46	39	34	45	43	45	43	41	
	CY	21	05-01	40	62	10-04	44	49	45	53	62	60	62	55	62	52	48	42	
	LV	-31	09-96	22	54	03-05	39	46	44	43	46	50	53	51	49	51	51	54	
	LT	-17	10-03	7	31	12-04	-2	6	19	24	28	27	27	30	31	27	28	26	
	LU <sup>(n)</sup>	20	01-02	38	45	01-04	36	39	39	36	39	39	43	36	40	40	38	42	
	HU	9	12-02	42	71	06-95	32	32	28	30	28	29	27	26	25	19	20	20	
	NL	-3	04-90	28	89	12-02	41	37	34	33	35	33	27	27	33	34	33	31	
	AT	-48	02-96	4	46	01-03	41	44	36	36	36	36	35	42	36	39	35	39	
	PL	-6	05-03	18	48	10-04	19	26	32	45	46	48	48	46	42	40	36	33	
PT <sup>(e)</sup>	-6	08-97	37	61	10-90	49	50	44	39	42	42	44	43	46	43	42	41		
SI	14	01-05	43	65	06-02	31	29	37	32	29	23	24	28	31	14	14	19		
SK	14	03-05	44	69	10-99	41	34	38	39	39	43	37	34	32	24	17	14		
FI	-59	11-95	-15	3	04-02	-9	-8	-9	-9	-8	-10	-6	-5	-5	-8	-8	-8		
SE	-40	03-05	-26	-6	10-95	-27	-24	-26	-28	-28	-26	-26	-33	-32	-33	-32	-40		
UK	-15	11-01	10	49	10-														

TABLE 5: Monthly survey of retail trade (s.a.) <sup>(a)(b)</sup>

		Since 01/1990						2004						2005					
		Min.		Ave.		Max.		Apr.	May	June	July	Aug.	Sep.	Oct.	Nov.	Dec.	Jan.	Feb.	Mar.
		Value	Date	Value	Date	Value	Date												
RETAIL TRADE CONFIDENCE INDICATOR	EU	-19	12-92	-7	4	07-90	-3	-3	-4	-6	-4	-7	-4	-8	-6	-5	-7	-9	
	<b>Euro area</b>	-21	03-93	-9	8	08-90	-6	-7	-10	-9	-7	-9	-7	-10	-7	-6	-8	-10	
	BE	-25	05-93	-6	13	04-90	3	-1	-2	-5	-3	1	-1	-3	-2	1	-2	-10	
	CZ	-1	02-99	14	26	08-02	15	16	18	20	15	25	25	23	17	17	20	19	
	DK	-6	10-01	17	37	11-94	27	19	20	20	24	24	28	26	29	28	28	31	
	DE	-44	01-03	-18	21	02-91	-22	-21	-28	-27	-23	-28	-23	-27	-19	-17	-22	-30	
	EE <sup>(n)</sup>	-37	03-99	6	37	05-04	34	37	30	22	23	21	22	20	0	4	18	22	
	EL	-24	06-95	1	27	03-04	22	20	17	15	16	18	14	9	8	13	5	9	
	ES	-36	02-93	-7	10	06-00	3	-6	-5	-6	-9	-10	-11	-11	-10	-10	-12	-7	
	FR	-37	04-97	-16	6	10-04	-4	-2	-3	-2	0	1	6	-1	1	-2	-3	0	
	IE	-21	05-03	4	24	06-00	-6	-3	-3	2	0	-3	1	-7	-1	-4	-8	-3	
	IT	-19	10-96	8	39	10-95	12	5	6	11	15	9	6	7	5	10	14	12	
	CY <sup>(n)</sup>	-21	04-03	-6	4	01-04	-7	-5	-5	-4	-5	-3	-2	-1	-2	-1	-3	0	
	LV	1	10-96	9	19	06-03	16	14	15	15	15	13	14	13	10	12	14	11	
	LT	-25	09-00	-5	26	06-04	25	23	26	11	9	11	13	11	11	5	10	-5	
	HU	-28	03-05	-7	9	11-97	-7	-6	-9	-10	-12	-14	-19	-23	-24	-20	-20	-28	
	NL	-16	12-03	13	30	10-99	-10	-10	-10	-11	-6	-5	-3	-9	-10	-7	-10	-6	
	AT	-29	03-03	-13	4	07-00	-2	-5	-13	-12	-14	-8	-14	-18	-12	-15	-14	-10	
	PL	-19	01-02	-6	7	07-98	-6	-4	-4	-6	-9	-9	-9	-10	-8	-2	-6	-7	
	PT <sup>(e)</sup>	-27	01-03	-7	4	01-99	-10	-7	-10	-6	-8	-5	-8	-11	-7	-7	-10	-7	
SI	3	01-01	11	23	04-99	12	14	13	11	13	10	12	13	14	13	10	8		
SK	-17	10-93	7	34	11-98	11	14	13	10	-2	5	0	3	-7	8	5	12		
FI	-17	11-00	-4	10	05-04	6	10	0	2	-4	-3	1	-6	4	-1	-8	-4		
SE	-8	09-01	6	27	04-00	5	4	6	0	6	1	0	-3	0	0	2	0		
UK	-27	09-92	-4	20	06-04	9	15	20	5	5	-3	4	0	-3	-5	-9	-13		
PRESENT BUSINESS SITUATION	EU	-25	12-94	-8	18	04-90	-1	-2	-3	-3	-3	-7	-7	-10	-6	-6	-11	-13	
	<b>Euro area</b>	-29	12-94	-10	21	11-90	-7	-10	-14	-10	-10	-11	-13	-17	-12	-8	-14	-15	
	BE	-41	10-95	-6	29	06-00	9	-1	-5	-7	-5	-2	1	-11	2	1	-7	-16	
	CZ	0	11-98	27	52	08-02	40	37	42	37	46	47	49	45	43	49	52	49	
	DK	-1	08-01	28	57	11-94	43	33	29	29	34	36	44	43	49	52	44	47	
	DE	-66	02-02	-21	46	11-90	-21	-25	-34	-31	-35	-32	-38	-36	-21	-23	-34	-37	
	EE <sup>(n)</sup>	-53	06-99	5	72	05-04	44	72	63	55	55	46	43	33	33	56	22	13	
	EL	-50	04-95	-8	40	01-04	29	35	22	21	24	27	17	18	25	32	12	14	
	ES	-72	07-93	-29	4	06-00	-19	-34	-25	-26	-30	-33	-36	-34	-35	-31	-34	-34	
	FR	-50	03-93	-14	11	10-94	-7	2	-4	5	6	7	8	-9	-5	3	-2	0	
	IE	-30	05-03	7	37	06-98	-9	0	-3	5	4	-11	-3	-13	-10	-3	-4	-2	
	IT	-42	02-95	15	73	02-93	24	7	7	15	26	14	9	13	3	12	14	16	
	CY <sup>(n)</sup>	-66	04-03	-30	6	01-04	-34	-24	-24	-21	-25	-26	-15	-14	-29	-12	-15	-28	
	LV	-18	07-96	3	32	07-03	19	24	24	22	24	20	20	20	19	20	22	14	
	LT	-37	03-00	-13	43	06-04	34	35	43	12	10	15	15	15	16	10	14	-5	
	HU	-41	03-05	-6	16	03-98	-4	2	-7	-11	-9	-16	-28	-30	-30	-24	-19	-41	
	NL	-27	12-03	29	57	06-99	-19	-14	-13	-11	-7	-5	-3	-13	-12	-7	-10	-11	
	AT	-36	04-03	-12	13	07-00	2	1	-17	-9	-16	-7	-18	-26	-14	-14	-13	-19	
	PL	-36	01-01	-14	20	02-98	-6	1	0	-5	-19	-20	-16	-15	-16	3	-8	-15	
	PT <sup>(e)</sup>	-46	01-03	-20	3	07-99	-33	-23	-31	-25	-29	-21	-28	-32	-26	-26	-32	-26	
SI	2	04-02	18	44	01-99	19	23	23	23	21	19	25	24	21	15	17	11		
SK	-35	06-95	10	58	11-98	-1	24	14	12	-7	4	-9	-14	-22	2	-2	-1		
FI	-15	11-00	7	40	05-04	31	40	20	25	9	4	13	-2	13	11	4	9		
SE	-21	10-96	8	34	07-00	14	6	13	8	12	3	1	1	0	7	9	3		
UK	-57	09-92	-4	42	06-04	16	24	42	21	21	6	13	15	14	-5	-8	-14		
VOLUME OF STOCKS	EU	11	01-91	16	22	03-02	16	15	16	16	13	16	14	14	13	12	14	15	
	<b>Euro area</b>	7	01-91	16	23	10-96	15	15	16	15	12	16	14	12	12	11	13	13	
	BE	-5	09-90	13	32	03-92	6	5	5	10	7	4	5	3	6	5	8	15	
	CZ	0	03-00	10	27	05-95	9	11	6	6	11	12	13	9	15	8	13	13	
	DK	-1	04-98	18	32	04-00	21	24	18	22	18	23	18	13	16	18	13	14	
	DE	4	02-91	26	43	02-02	26	26	29	26	17	27	17	17	17	15	18	22	
	EE <sup>(n)</sup>	-7	09-96	10	25	09-99	7	7	11	21	13	8	9	12	17	17	19	14	
	EL	-7	11-02	13	41	12-93	8	7	0	5	12	17	19	23	28	12	18	21	
	ES	-8	02-96	5	16	07-92	3	4	6	5	8	7	6	8	8	6	8	8	
	FR	-3	10-93	11	21	09-98	7	11	10	13	12	11	11	10	7	14	14	8	
	IE	-5	06-00	10	25	08-98	8	8	6	17	8	7	9	12	8	8	10	9	
	IT	-8	10-99	8	43	10-96	12	7	8	2	1	8	16	6	6	-2	3	1	
	CY <sup>(n)</sup>	-17	02-03	-5	6	12-03	-3	-1	-2	-7	-4	-8	-7	-2	-4	-11	-4	6	
	LV	-18	07-96	-4	8	12-02	-1	-1	1	-1	-1	-3	0	1	2	-1	0	0	
	LT	-21	12-99	-1	13	10-96	-2	6	2	-1	0	0	-2	0	2	3	2	13	
	HU	4	02-96	23	33	01-99	20	19	22	17	23	20	20	23	28	24	23	21	
	NL	5	07-97	11	18	12-04	14	17	16	17	16	15	14	14	18	16	16	17	
	AT	-2	01-00	25	36	01-96	21	23	27	25	25	18	24	23	23	31	25	25	
	PL	-9	09-03	-2	5	02-05	-4	-5	-6	-3	-4	-2	-2	-1	-5	5	5	4	
	PT <sup>(e)</sup>	-3	12-03	9	25	06-90	3	8	2	3	4	2	8	7	1	5	2	2	
SI	8	05-02	17	33	01-99	11	9	11	18	17	17	19	17	12	14	14	13		
SK	-5	06-00	10	26	02-95	12	13	13	19	22	16	13	12	12	9	14	7		
FI	22	12-04	29	40	08-00	35	30	30	29	28	22	24	24	22	24	29	29		
SE	18	04-00	31	44	02-98	30	25	28	33	30	25	31	32	31	29	29	30		
UK	4	04-93	19	33	02-91	18	12	16	19	19	19	14	19	17	14	16	24		

TABLE 5 (continued): Monthly survey of retail trade (s.a.)<sup>(a)(b)</sup>

		Since 01/1990						2004						2005					
		Min.		Ave.		Max.		Apr.	May	June	July	Aug.	Sep.	Oct.	Nov.	Dec.	Jan.	Feb.	Mar.
		Value	Date	Value	Date	Value	Date												
EXPECTED	EU	-20	01-93	2	18	06-00		9	9	7	3	6	2	9	1	2	3	3	0
BUSINESS	Euro area	-26	02-93	-2	17	06-00		4	3	0	-1	2	0	7	-1	2	1	2	-1
SITUATION	BE	-23	04-03	2	22	04-98		8	2	5	2	3	9	1	5	-1	7	7	1
Component of the retail confidence indicator	CZ	2	09-00	23	46	02-02		15	22	17	28	9	40	38	34	24	10	22	21
	DK	8	10-01	40	71	07-94		60	50	48	54	56	59	57	50	54	50	53	58
	DE	-42	10-02	-7	26	12-90		-18	-13	-20	-23	-16	-25	-12	-27	-20	-13	-14	-30
	EE <sup>(n)</sup>	-41	03-99	22	67	03-05		63	47	39	32	28	25	31	38	-17	-27	50	67
	EL	-4	05-95	25	60	06-00		47	31	30	28	36	45	44	34	26	20	22	32
	ES	-34	02-93	14	34	04-91		29	22	17	14	12	11	8	11	14	8	5	20
	FR	-64	02-93	-24	19	10-04		2	4	3	4	5	5	19	16	14	4	5	7
	IE	-31	07-03	14	44	11-97		-1	-1	-1	16	5	9	16	5	15	-1	-9	0
	IT	-20	03-93	17	59	06-96		23	14	20	19	20	22	25	12	18	16	30	20
	CY <sup>(n)</sup>	-20	06-02	8	40	11-03		9	9	6	1	6	9	2	10	18	-2	3	35
	LV	2	01-04	19	36	09-99		28	16	21	21	21	17	22	21	13	14	19	18
	LT	-35	09-00	-4	45	03-04		39	41	39	21	17	18	23	18	19	8	17	4
	HU	-22	03-05	8	39	02-98		4	-1	1	-2	-4	-5	-9	-17	-15	-14	-18	-22
	NL	-5	12-03	20	41	10-99		2	2	-2	-4	6	6	8	1	1	1	-3	9
	AT	-24	03-03	-3	15	07-00		12	6	6	-1	0	1	1	-5	0	0	-4	14
	PL	-33	12-01	-7	17	07-98		-17	-19	-18	-16	-13	-9	-14	-15	-12	-3	-6	-4
	PT <sup>(c)</sup>	-26	01-03	8	39	01-90		7	10	2	9	9	7	12	8	8	10	5	8
	SI	15	02-03	31	47	04-99		29	29	26	28	36	28	31	31	34	37	27	26
	SK	-14	11-94	22	60	12-96		46	32	38	36	23	27	23	34	13	30	30	45
	FI	-4	04-03	9	39	05-97		23	21	11	10	9	10	15	7	20	9	1	9
SE	19	10-01	42	67	04-00		31	30	31	24	36	25	31	21	29	21	26	26	
UK	-25	10-98	12	40	01-97		30	32	33	15	14	5	14	4	-6	5	-2	-3	
INTENTIONS	EU	-16	10-02	-3	13	01-90		0	0	-2	-3	-1	-6	-3	-9	-6	-6	-3	-8
ORDERS	Euro area	-23	10-02	-5	15	01-90		-7	-7	-8	-6	-4	-8	-7	-11	-7	-8	-3	-8
	BE	-27	05-93	-7	15	03-90		-2	-6	-7	-8	-3	-3	-4	-10	-6	-8	-7	-8
	CZ	-34	02-96	29	56	02-95		31	26	26	23	26	24	33	22	30	10	22	14
	DK	-12	10-01	18	58	07-94		25	19	21	20	21	23	28	28	25	21	28	27
	DE	-51	09-02	-14	21	02-91		-29	-21	-27	-24	-17	-28	-27	-31	-21	-22	-15	-27
	EE <sup>(n)</sup>	-46	03-99	13	57	06-98		47	33	24	23	11	12	11	14	-31	-23	37	56
	EL	-23	04-93	10	38	06-96		19	17	22	17	18	19	12	5	16	14	2	15
	ES	-31	02-93	5	21	01-90		14	16	13	9	2	-1	1	-1	4	-1	-3	1
	FR	-37	12-92	-14	11	10-99		-4	-9	-7	-6	-5	-6	3	-2	-8	-4	-3	-3
	IE	-43	05-03	-4	27	08-00		-13	-13	-9	-7	-11	-7	10	-14	0	-21	-18	-13
	IT	-25	10-97	21	69	04-92		21	14	18	22	27	22	13	12	14	11	35	18
	CY <sup>(n)</sup>	-46	06-02	-11	15	12-04		8	-1	2	-17	-8	-2	-4	2	15	-20	-11	0
	LV	-4	10-96	8	27	03-02		11	7	11	12	13	9	12	17	9	10	11	16
	LT	-23	01-03	6	51	07-04		38	32	38	51	18	21	23	27	19	17	23	5
	HU	-29	03-05	-1	23	05-98		-1	-5	-8	-5	-9	-9	-20	-25	-19	-17	-25	-29
	NL	-22	09-03	4	25	08-99		-14	-13	-19	-13	-11	-10	-10	-13	-15	-12	-17	-10
	AT	-42	03-99	-31	-16	06-00		-22	-23	-27	-28	-26	-25	-26	-32	-26	-25	-28	-27
	PL	-30	12-01	-6	13	12-98		-11	-13	-10	-8	-6	-5	-11	-13	-8	-3	-6	-2
	PT <sup>(c)</sup>	-41	01-03	-13	12	11-98		-7	-5	-14	-3	-15	-14	-6	-12	-11	-8	-3	-6
	SI	-2	10-01	14	30	10-00		9	10	14	15	14	16	11	14	16	12	10	6
	SK	-19	03-96	34	78	01-02		41	48	37	42	31	36	40	43	19	34	37	51
	FI	-20	07-03	-7	11	04-04		11	5	-5	2	-4	-4	0	-1	9	9	4	4
	SE	-17	10-01	15	52	03-00		5	10	10	2	12	8	4	-2	3	2	6	3
	UK	-37	03-91	4	34	08-96		27	27	22	10	6	-1	15	-2	-6	0	-9	-12
EMPLOYMENT	EU	-13	12-92	-1	9	08-00		-3	0	-2	0	2	-2	2	-2	-3	0	-1	0
EXPECTATIONS	Euro area	-11	12-92	-1	10	08-00		-3	2	-2	1	3	0	3	-1	-3	2	0	1
	BE	-13	12-92	3	16	04-90		11	15	6	9	8	13	9	10	11	15	9	4
	CZ	-37	01-95	1	22	05-02		2	-1	1	3	12	8	7	9	17	6	8	8
	DK	-8	05-01	8	28	05-00		11	6	5	8	7	4	9	6	10	10	9	16
	DE <sup>(d)</sup>	-32	01-03	-8	15	03-98		-19	-7	-16	-12	-6	-13	-7	-9	-11	-6	-10	-12
	EE <sup>(n)</sup>	-30	03-99	-4	15	06-94		12	11	12	2	-1	-2	2	5	-3	-5	9	14
	EL	-8	02-04	29	62	03-98		3	-4	15	20	21	22	10	5	4	3	2	0
	ES	-19	09-93	0	8	12-98		3	3	8	2	1	0	-2	3	3	-1	4	5
	FR	-14	06-91	-2	12	10-00		-1	7	-1	-1	1	5	2	-2	-6	5	1	-1
	IE	-17	05-03	2	22	03-98		-6	-1	-7	-1	-3	-10	1	-5	-4	-9	-6	1
	IT	-34	02-97	11	54	02-00		22	15	18	28	29	15	32	15	8	19	21	31
	CY <sup>(n)</sup>	-6	07-02	0	2	01-03		1	1	1	1	0	1	0	1	-1	-1	0	-2
	LV	-23	04-96	-1	13	07-03		6	7	6	10	10	10	9	4	10	10	10	9
	LT	-48	07-95	-15	60	02-05		48	49	54	55	22	25	28	19	50	41	60	48
	HU	-36	05-96	-9	5	11-03		-1	-8	-4	-5	-11	-9	-12	-16	-13	-10	-13	-19
	NL	-6	03-04	3	13	06-99		-3	-6	-3	-5	-4	-3	-4	-2	-3	-4	-3	-2
	AT	-20	03-99	-5	71	01-96		-5	-6	-6	-4	-4	-4	-5	-8	-6	-5	-7	-6
	PL	-28	12-01	-12	2	07-97		-12	-8	-11	-14	-11	-9	-10	-9	-10	-8	-7	-7
	PT <sup>(c)</sup>	-23	05-03	-4	13	09-97		-13	-11	-12	-2	-11	-10	-12	-11	-6	-3	-11	-11
	SI	-46	02-99	-10	11	06-04		-6	1	11	8	9	-3	0	-6	-4	5	-13	-13
	SK	-71	12-93	-9	31	09-02		2	3	0	-3	-18	-26	-6	-6	-26	-15	-13	-17
	FI	-16	07-03	-3	10	05-04		8	10	7	4	-1	-4	1	1	-3	-2	-2	-2
	SE	-34	10-96	-3	23	06-00		-11	-8	-11	-15	-12	-13	-10	-13	-11	-15	-19	-15
	UK	-32	12-91	-2	25	10-97		-5	-5	-2	0	0	-7	-2	-3	-1	-10	-7	-2

(a) United Kingdom: refers to the volume

TABLE 6: Monthly survey of construction industry (s.a.)<sup>(a)</sup>

		Since 01/1985						2004						2005					
		Min.		Ave.		Max.		Apr.	May	June	July	Aug.	Sep.	Oct.	Nov.	Dec.	Jan.	Feb.	Mar.
		Value	Date	Value	Date	Value	Date												
CONSTRUCTION CONFIDENCE INDICATOR	<b>EU</b>	-42	10-93	-21	3	02-90	-15	-14	-13	-13	-13	-13	-12	-11	-11	-11	-12	-12	
	<b>Euro area</b>	-44	08-96	-21	4	02-90	-17	-16	-15	-16	-15	-15	-14	-14	-13	-13	-13	-14	
	<b>BE</b>	-35	11-95	-12	10	02-00	-10	-8	-8	-9	-9	-5	-5	-4	-9	-6	-6	-4	
	<b>CZ</b>	-64	06-99	-18	3	06-95	-6	0	2	-5	-5	-10	-9	-5	1	3	-4	-7	
	<b>DK</b>	-37	12-91	-9	19	03-98	-7	-4	-6	-6	-5	-2	-2	2	4	2	4	3	
	<b>DE</b>	-62	11-02	-36	3	01-91	-49	-48	-48	-49	-53	-52	-54	-53	-55	-50	-55	-51	
	<b>EE<sup>(n)</sup></b>	-46	03-99	1	32	07-02	16	27	27	22	21	20	12	6	8	13	20	27	
	<b>EL</b>	-53	03-05	-11	33	04-00	-4	-6	-13	-24	-35	-45	-37	-47	-49	-44	-48	-53	
	<b>ES</b>	-57	10-92	-3	42	01-99	10	7	7	5	25	18	26	22	24	17	26	28	
	<b>FR</b>	-60	03-93	-17	34	10-00	5	5	2	1	3	6	5	7	8	11	11	12	
	<b>IE</b>	-54	09-02	10	58	06-97	26	17	30	36	39	36	33	28	27	13	12	27	
	<b>IT</b>	-68	10-93	-14	21	05-90	-8	-5	10	13	3	2	2	5	4	6	2	-5	
	<b>CY<sup>(n)</sup></b>	-4	01-05	14	41	11-03	8	23	15	41	25	1	7	3	-2	-4	0	5	
	<b>LV</b>	-64	07-93	-30	3	03-05	-3	-1	-5	-8	-9	-11	-4	-3	-7	0	-2	3	
	<b>LT</b>	-76	09-00	-43	-2	03-05	-17	-14	-16	-21	-21	-12	-11	-9	-11	-10	-5	-2	
	<b>LU</b>	-73	03-94	-26	24	03-90	-47	-43	-37	-30	-28	-34	-19	-16	-10	-12	-22	-29	
	<b>HU</b>	-24	12-04	-7	11	09-98	-11	-10	-5	-11	-8	-10	-16	-20	-24	-19	-20	-17	
	<b>NL</b>	-25	05-03	-3	27	12-00	-15	-17	-17	-16	-14	-12	-7	-7	-7	-6	-5	-2	
	<b>AT</b>	-60	04-96	-30	-13	02-03	-23	-23	-29	-25	-24	-25	-23	-21	-16	-25	-22	-24	
	<b>PL</b>	-63	12-02	-44	-22	03-98	-43	-42	-40	-37	-37	-38	-32	-33	-39	-29	-32	-30	
<b>PT</b>	-56	02-03	-26	-1	12-97	-41	-42	-42	-44	-40	-41	-38	-34	-32	-33	-40	-34		
<b>SI<sup>(n)</sup></b>	-28	05-02	-8	8	07-04	5	-2	8	8	7	5	-2	-5	-10	6	-3	-3		
<b>SK</b>	-86	07-99	-29	18	03-97	-27	-22	-16	-18	-15	-14	-13	-23	-20	-12	-17	-13		
<b>FI</b>	-97	09-91	-19	48	06-98	0	7	-1	0	2	-1	0	-4	4	-7	12	16		
<b>SE</b>	-83	12-93	-39	25	01-01	-33	-28	-21	-9	-18	-6	-1	4	14	10	3	-3		
<b>UK</b>	-79	06-91	-20	5	08-04	1	2	3	4	5	3	-3	1	-1	-2	-3	-2		
ORDER BOOKS	<b>EU</b>	-55	08-93	-30	-2	03-90	-23	-21	-23	-23	-22	-21	-22	-18	-19	-18	-17		
	<b>Euro area</b>	-54	08-93	-29	-3	03-90	-24	-22	-24	-25	-24	-22	-23	-20	-21	-19	-18		
Component of the construction confidence indicator	<b>BE</b>	-48	02-96	-23	2	02-00	-18	-19	-18	-20	-19	-18	-14	-14	-20	-16	-16		
	<b>CZ</b>	-72	06-99	-23	9	12-02	-10	0	5	-7	-8	-18	-20	-9	2	7	-4		
	<b>DK</b>	-49	12-91	-12	33	03-95	-11	-7	-8	-8	-5	-3	-3	0	4	2	3		
	<b>DE</b>	-71	10-02	-45	-7	03-91	-56	-57	-60	-63	-69	-63	-65	-65	-66	-64	-66		
	<b>EE<sup>(n)</sup></b>	-64	06-99	-7	49	08-02	-1	12	20	20	21	26	25	13	10	16	6		
	<b>EL</b>	-77	06-95	-36	16	04-00	-26	-9	-27	-18	-22	-27	-37	-54	-53	-49	-61		
	<b>ES</b>	-64	08-93	0	50	02-05	16	25	12	9	33	24	20	36	32	30	50		
	<b>FR</b>	-74	09-93	-24	37	10-00	2	1	-2	-6	-4	1	0	3	2	9	10		
	<b>IE</b>	-61	06-94	3	68	06-97	4	1	20	11	20	16	9	25	16	4	-9		
	<b>IT</b>	-84	02-94	-25	17	05-90	-26	-24	-11	-6	-12	-10	-12	-6	-6	-3	-3		
	<b>CY<sup>(n)</sup></b>	-5	06-02	8	51	12-03	6	18	12	34	19	0	6	3	-1	-3			
	<b>LV</b>	-84	01-96	-53	-14	03-05	-24	-19	-20	-28	-23	-25	-21	-20	-22	-16			
	<b>LT</b>	-96	09-00	-66	-22	09-04	-40	-36	-35	-40	-41	-22	-27	-29	-34	-35			
	<b>LU</b>	-73	08-93	-28	12	03-90	-46	-47	-36	-34	-35	-35	-26	-17	-9	-19			
	<b>HU</b>	-35	12-04	-17	3	09-98	-23	-20	-16	-22	-17	-21	-28	-32	-35	-32			
	<b>NL</b>	-30	09-93	-8	20	09-00	-20	-19	-23	-19	-18	-17	-17	-15	-17	-13			
	<b>AT</b>	-65	04-96	-41	-22	11-99	-42	-38	-45	-39	-39	-40	-34	-33	-28	-35			
	<b>PL</b>	-99	12-02	-69	-31	12-01	-71	-70	-68	-66	-66	-66	-63	-64	-76	-61			
	<b>PT</b>	-79	05-94	-44	-9	12-97	-62	-66	-60	-64	-58	-63	-58	-56	-51	-53			
	<b>SI<sup>(n)</sup></b>	-47	05-02	-12	16	08-04	-9	-14	3	4	16	9	13	10	1	-1			
<b>SK</b>	-93	03-94	-45	-5	03-97	-41	-49	-38	-34	-33	-30	-27	-36	-31	-27				
<b>FI</b>	-99	12-93	-26	38	06-98	-3	19	-10	-5	-2	-6	-10	-3	1	-3				
<b>SE</b>	-97	05-97	-51	33	01-90	-58	-38	-38	-20	-33	-15	-11	-12	0	-7				
<b>UK</b>	-87	06-91	-35	-3	01-90	-8	-6	-6	-5	-7	-8	-14	-7	-9	-7				
EMPLOYMENT EXPECTATIONS	<b>EU</b>	-34	04-96	-12	9	02-90	-7	-8	-3	-4	-3	-5	-3	-4	-3				
	<b>Euro area</b>	-38	04-96	-13	11	02-90	-10	-11	-6	-7	-6	-9	-5	-7	-6				
Component of the construction confidence indicator	<b>BE</b>	-24	11-95	-1	19	02-90	-2	3	3	1	8	5	6	2	3				
	<b>CZ</b>	-57	06-99	-14	12	06-95	-3	-1	-1	-3	-3	-2	1	-1	1				
	<b>DK</b>	-31	09-91	-6	42	03-98	-3	-1	-3	-4	-4	-1	-1	3	5				
	<b>DE</b>	-59	03-96	-27	19	02-90	-41	-39	-36	-36	-37	-42	-42	-40	-43				
	<b>EE<sup>(n)</sup></b>	-57	03-99	9	58	03-97	34	42	34	24	21	14	-1	0	6				
	<b>EL</b>	-64	09-04	14	60	03-99	18	-3	1	-30	-49	-64	-38	-40	-45				
	<b>ES</b>	-66	03-93	-6	54	01-99	3	-12	2	0	16	11	31	7	17				
	<b>FR</b>	-51	03-93	-10	31	10-00	7	9	7	7	9	11	9	11	14				
	<b>IE</b>	-50	09-02	16	61	07-04	48	33	40	61	58	56	57	31	38				
	<b>IT</b>	-60	10-93	-2	31	06-04	11	15	31	31	18	14	16	15	14				
	<b>CY<sup>(n)</sup></b>	-5	01-05	21	60	11-03	9	27	18	48	30	2	8	4	-3				
	<b>LV</b>	-45	07-93	-7	26	03-04	19	16	11	12	6	4	13	14	9				
	<b>LT</b>	-56	09-00	-19	37	03-03	6	7	3	-2	-2	-2	5	11	13				
	<b>LU</b>	-77	02-94	-24	36	03-90	-48	-40	-37	-26	-22	-34	-12	-14	-12				
	<b>HU</b>	-13	12-04	2	21	01-98	1	-1	5	1	1	1	-3	-8	-13				
	<b>NL</b>	-26	05-03	2	36	12-00	-11	-14	-11	-13	-10	-6	3	1	3				
	<b>AT</b>	-76	02-01	-19	14	02-03	-5	-9	-12	-12	-9	-10	-11	-9	-4				
	<b>PL</b>	-49	04-02	-14	18	05-96	-16	-13	-13	-8	-8	-9	-2	-3	-2				
	<b>PT</b>	-47	02-03	-7	19	09-97	-21	-19	-24	-25	-21	-19	-18	-13	-12				
	<b>SI<sup>(n)</sup></b>	-30	12-02	-4	22	03-05	19	10	13	12	-3	1	-16	-20	-21				
<b>SK</b>	-86	07-99	-12	41	01-97	-13	4	6	-1	3	3	1	-11	-9					
<b>FI</b>	-100	04-91	-11	59	03-97	2	-5	7	4	5	5	10	-4	7					
<b>SE</b>	-78	01-97	-27	45	01-01	-8	-18	-4	2	-3	4	9	20	27					
<b>UK</b>	-72	06-91	-6	17	12-97	9	9	13	12	17	14	8	9	7					

TABLE 6 (continued): Monthly survey of construction industry (s.a.)<sup>(a)</sup>

		Since 01/1985				2004								2005					
		Min.		Ave.		Max.		Apr.	May	June	July	Aug.	Sep.	Oct.	Nov.	Dec.	Jan.	Feb.	Mar.
		Value	Date	Value	Date	Value	Date												
TREND OF	<b>EU</b>	-35	03-93	-8	15	03-90	-3	-3	1	1	1	0	2	-2	1	7	0	-9	
ACTIVITY	<b>Euro area</b>	-39	03-93	-9	17	03-90	-4	-3	-1	-1	-2	-2	1	-5	0	5	-2	-11	
COMPARED WITH	<b>BE</b>	-37	03-91	-4	36	02-90	4	-2	-8	-4	-7	0	10	-1	-5	2	3	-14	
PRECEDING	<b>CZ</b>	-34	06-99	24	77	01-05	27	32	37	42	42	33	52	60	60	77	61	50	
MONTHS	<b>DK</b>	-21	04-03	-4	19	01-98	-4	2	1	-2	-2	0	-2	8	8	5	9	8	
	<b>DE</b>	-44	03-96	-19	19	03-90	-18	-20	-24	-26	-27	-25	-27	-27	-25	-23	-29	-39	
	<b>EE<sup>(n)</sup></b>	-67	06-99	16	76	09-98	-3	30	52	67	56	60	56	50	19	10	-4	-10	
	<b>EL</b>	-50	12-94	7	61	06-98	27	30	25	23	7	-10	-15	-24	-23	-23	-35	-44	
	<b>ES</b>	-49	07-97	5	59	01-99	2	-6	0	10	21	0	22	-2	22	27	16	5	
	<b>FR</b>	-64	09-93	-9	42	07-00	9	16	17	10	12	16	20	19	16	20	19	16	
	<b>IE</b>	-45	09-91	3	47	05-96	40	31	41	47	24	23	46	27	10	24	-7	15	
	<b>IT</b>	-50	03-93	-2	26	07-04	7	5	26	26	4	12	10	5	6	15	11	3	
	<b>CY<sup>(n)</sup></b>	-95	09-04	6	56	11-03	2	14	13	13	28	-95	29	3	-2	-2	-4	7	
	<b>LV</b>	-47	04-96	-3	44	06-02	7	32	34	13	13	12	16	19	9	21	19	21	
	<b>LT</b>	-61	03-00	-5	81	06-02	13	30	56	20	28	18	18	11	0	11	23	-7	
	<b>LU</b>	-68	10-02	-23	30	04-91	-52	-24	-35	-38	-29	-6	-17	-18	-4	-2	-9	-32	
	<b>HU</b>	-37	03-03	-8	14	03-99	-5	2	5	5	3	-2	-8	-14	-18	-17	-19	-20	
	<b>NL</b>	-41	02-96	-3	37	03-97	-10	-4	-8	-6	2	8	1	-6	-1	12	2	-5	
	<b>AT</b>	-87	04-96	-8	27	01-04	-45	-12	-8	-4	-1	-7	4	8	15	22	-16	-38	
	<b>PL</b>	-30	01-02	9	42	01-05	-13	-3	-2	9	12	11	17	20	24	42	23	0	
	<b>PT</b>	-37	09-03	-9	24	05-97	-26	-27	-34	-21	-10	-5	-10	-13	-16	-8	-12	-24	
	<b>SI<sup>(n)</sup></b>	-46	03-05	14	45	08-03	-4	3	31	38	34	35	25	29	16	6	-30	-46	
	<b>SK</b>	-43	06-99	6	53	12-04	-7	20	24	40	44	50	47	50	53	37	3	-6	
	<b>FI</b>	-88	09-91	5	75	01-98	37	41	44	18	41	32	25	17	26	25	29	25	
	<b>SE</b>	-67	12-91	-13	46	04-01	-21	-30	-17	-13	2	21	9	13	10	16	13	12	
	<b>UK</b>	-69	06-91	-6	16	02-04	6	6	12	8	13	9	3	3	4	9	2	-1	
PRICE	<b>EU</b>	-21	04-96	0	25	02-90	5	7	5	7	10	6	5	9	6	7	3	1	
EXPECTATIONS	<b>Euro area</b>	-27	04-96	-2	32	04-90	0	2	-1	2	5	1	-1	3	1	2	-2	-3	
	<b>BE</b>	-22	01-96	-1	29	01-90	-2	-2	0	2	0	0	3	0	0	-1	-2	-1	
	<b>CZ</b>	-39	08-00	43	80	02-95	45	38	30	26	38	20	23	27	19	18	22	23	
	<b>DK</b>	-36	03-03	-17	0	05-98	-13	-9	-13	-9	-9	-10	-10	-3	-5	-4	-6	-6	
	<b>DE</b>	-45	03-96	-13	45	02-90	-18	-16	-17	-21	-19	-21	-20	-20	-18	-19	-21	-25	
	<b>EE<sup>(n)</sup></b>	-19	03-97	30	91	06-94	46	56	45	23	32	34	33	31	40	38	41	49	
	<b>EL</b>	-38	10-04	7	35	06-95	-8	-9	-1	-7	-17	-27	-38	-32	-32	-23	-30	-28	
	<b>ES</b>	-20	10-93	18	71	10-00	20	13	20	25	47	25	18	39	35	25	20	20	
	<b>FR</b>	-60	03-93	-17	32	10-00	-1	3	-4	2	3	4	2	3	-3	1	0	0	
	<b>IE</b>	-66	07-03	5	58	03-00	12	32	13	54	34	16	8	8	5	10	-10	-1	
	<b>IT</b>	-16	07-93	18	63	06-90	19	23	14	22	21	20	17	22	15	29	16	12	
	<b>CY<sup>(n)</sup></b>	13	04-03	38	83	06-04	16	54	83	78	61	49	18	21	52	19	16	14	
	<b>LV</b>	-11	03-01	24	66	01-05	47	62	60	54	50	50	54	60	62	66	60	48	
	<b>LT</b>	-5	03-01	35	89	01-95	39	46	48	40	47	43	47	48	48	41	46	42	
	<b>LU</b>	-67	05-93	-27	29	11-00	-53	-47	-54	-49	-41	-43	-42	-42	-41	-38	-35	-37	
	<b>HU</b>	-3	01-05	11	32	03-01	17	12	10	10	10	9	11	10	9	-3	1	4	
	<b>NL</b>	-7	01-04	25	69	04-01	0	6	5	7	9	11	13	9	5	-2	11	14	
	<b>AT</b>	-53	04-96	-12	18	06-91	7	12	2	1	-4	-1	2	-4	7	4	0	-1	
	<b>PL</b>	-27	03-02	16	45	05-96	9	14	13	12	9	7	11	10	8	12	9	7	
	<b>PT</b>	-40	05-03	1	48	06-90	-21	-15	-17	-17	-13	-16	-10	-10	-12	-11	-10	-7	
	<b>SI<sup>(n)</sup></b>	-16	10-04	5	20	03-04	13	17	16	11	13	12	-16	7	4	4	9	12	
	<b>SK</b>	-20	08-00	55	93	06-97	45	45	46	47	62	39	41	38	15	27	25	22	
	<b>FI</b>	-45	06-91	8	65	05-97	15	9	-4	19	6	5	-4	10	4	3	13	9	
	<b>SE</b>	-75	06-91	-16	33	01-01	2	-16	-18	5	-3	9	7	11	10	16	7	5	
	<b>UK</b>	-56	12-90	14	43	08-04	36	38	41	43	43	40	34	43	37	38	33	25	

(a) The indicator is the average of the balances (%) for the questions on order-books and employment expectations.

**TABLE 7a: Manufacturing industry; future Member States (s.a.)<sup>(a)</sup>**  
Balances: i.e.differences between the percentages of respondents giving positive and negative replies (s.a.)

		Since 01/1990						2004								2005			
		Min.		Ave.		Max.		Apr.	May	June	July	Aug.	Sep.	Oct.	Nov.	Dec.	Jan.	Feb.	Mar.
		Value	Date	Value	Date	Value	Date												
CONFIDENCE INDICATOR	BG	-30	06-93	-8	8	11-95	0	-1	-1	1	1	0	-1	2	3	2	2	0	
	RO	-22	09-92	-1	28	06-96	5	1	2	5	3	5	4	6	6	5	2	4	
PRODUCTION EXPECTATIONS	BG	-17	02-97	21	42	11-95	29	24	27	28	28	26	26	32	36	30	30	29	
	RO	-8	07-92	23	52	03-03	32	21	20	25	21	23	28	28	24	29	29	30	
ORDER BOOKS	BG	-65	06-93	-44	-19	10-00	-36	-36	-36	-31	-33	-35	-36	-34	-33	-33	-31	-33	
	RO	-53	06-99	-16	50	06-96	-11	-14	-13	-11	-13	-11	-14	-12	-10	-9	-12	-11	
STOCKS OF FINISHED PRODUCTS <sup>(b)</sup>	BG	-22	06-97	2	35	08-93	-6	-9	-6	-5	-7	-9	-8	-8	-7	-7	-7	-5	
	RO	-4	06-96	10	51	07-92	6	3	1	-2	0	-3	1	-2	-2	5	11	7	

(a) The confidence indicator is the arithmetic average of the three components (the last with inverted sign).  
(b) Highest figure is considered as minimum, lowest figure is considered as maximum.

**TABLE 7b: Services<sup>(a)</sup>**

		Since 01/1990						2004								2005			
		Min.		Ave.		Max.		Apr.	May	June	July	Aug.	Sep.	Oct.	Nov.	Dec.	Jan.	Feb.	Mar.
		Value	Date	Value	Date	Value	Date												
CONFIDENCE INDICATOR	BG <sup>(n)</sup>	12	03-03	29	43	06-02	36	26	29	30	30	33	23	18	23	29	24	26	
	RO <sup>(n)</sup>	6	02-03	30	72	06-04	33	28	72	47	40	38	35	32	29	30	20	20	
ASSESSMENT OF BUSINESS CLIMATE	BG <sup>(n)</sup>	10	05-03	31	60	12-02	23	16	15	30	31	28	28	23	20	24	13	17	
	RO <sup>(n)</sup>	9	12-03	41	75	04-03	39	31	74	52	40	47	43	41	34	43	21	22	
EVOLUTION OF DEMAND IN RECENT MONTHS	BG <sup>(n)</sup>	-11	05-02	17	32	03-04	23	18	29	21	29	28	25	20	15	15	9	13	
	RO <sup>(n)</sup>	-4	02-03	22	69	06-04	21	9	69	41	34	22	40	31	28	23	18	16	
EVOLUTION OF DEMAND IN THE MONTHS AHEAD	BG <sup>(n)</sup>	10	11-04	38	69	05-02	62	44	44	38	31	42	16	10	35	48	49	48	
	RO <sup>(n)</sup>	-23	01-03	26	72	06-04	38	45	72	48	46	46	22	24	26	24	20	22	

(a) The confidence indicator is the arithmetic average of the three components.  
(n) Not seasonally adjusted.

**TABLE 7c: Consumer opinion and financial condition; future Member States (a)**

		Since 01/1990						2004								2005			
		Min.		Ave.		Max.		Apr.	May	June	July	Aug.	Sep.	Oct.	Nov.	Dec.	Jan.	Feb.	Mar.
		Value	Date	Value	Date	Value	Date												
CONFIDENCE INDICATOR	BG <sup>(n)</sup>	-40	08-03	-29	-15	07-01	-25	-25	-26	-28	-32	-28	-28	-29	-28	-27	-26	-23	
	RO <sup>(n)</sup>	-33	07-02	-24	-13	01-05	-19	-19	-16	-16	-18	-18	-17	-13	-14	-13	-17	-19	
FINANCIAL SITUATION OVER NEXT 12 MONTHS	BG <sup>(n)</sup>	-24	08-03	-12	3	07-01	-9	-10	-10	-13	-15	-10	-13	-11	-11	-8	-9	-8	
	RO <sup>(n)</sup>	-14	07-02	-3	9	01-05	2	2	4	6	6	6	4	9	7	9	5	4	
GEN. ECON. SITUATION OVER NEXT 12 MONTHS	BG <sup>(n)</sup>	-27	08-03	-8	15	07-01	-6	-5	-7	-11	-13	-9	-9	-10	-5	-4	-4	0	
	RO <sup>(n)</sup>	-14	07-02	-1	12	01-05	2	4	10	8	7	5	7	8	7	12	8	6	
SAVINGS OVER NEXT 12 MONTHS	BG <sup>(n)</sup>	-80	03-02	-75	-68	06-01	-73	-75	-76	-73	-78	-76	-73	-79	-75	-76	-75	-73	
	RO <sup>(n)</sup>	-62	06-03	-54	-45	12-04	-52	-52	-50	-47	-48	-50	-47	-46	-45	-48	-51	-48	
UNEMPLOYMENT OVER NEXT 12 MONTHS	BG <sup>(n)</sup>	3	07-01	19	30	02-02	11	11	13	17	20	17	18	18	20	21	18	13	
	RO <sup>(n)</sup>	25	11-04	38	51	01-02	28	31	28	32	36	31	33	25	25	25	30	38	

(a) The confidence indicator is the average of the four components.  
(n) Not seasonally adjusted.

**TABLE 7d: Retail trade (s.a.)<sup>(a)</sup>**

		Since 01/1990						2004								2005			
		Min.		Ave.		Max.		Apr.	May	June	July	Aug.	Sep.	Oct.	Nov.	Dec.	Jan.	Feb.	Mar.
		Value	Date	Value	Date	Value	Date												
CONFIDENCE INDICATOR	BG	5	11-00	19	32	06-00	9	11	15	11	15	12	15	13	13	11	9	10	
	RO	1	06-99	16	36	12-97	19	18	25	19	22	24	24	23	23	22	17	19	
PRESENT BUSINESS SITUATION	BG	-3	09-96	22	54	11-97	1	7	16	11	13	11	14	8	12	8	5	2	
	RO	-1	02-03	28	58	09-97	22	21	34	23	25	27	33	28	32	35	23	18	
VOLUME OF STOCKS EXPECTED	BG	-55	03-97	-19	12	11-00	-7	-9	-10	-7	-8	-8	-5	-8	-4	-4	-5	-6	
	RO	-20	12-94	4	55	10-95	0	1	1	1	3	-3	2	-1	2	-3	-2	-1	
EXPECTED BUSINESS SITUATION	BG	-33	02-97	15	43	03-00	19	17	18	15	22	17	27	23	23	21	16	21	
	RO	-37	10-94	24	74	11-95	35	34	40	36	45	41	40	40	39	28	28	38	

(a) The confidence indicator is the arithmetic average of the three components (for stocks, with inverted sign).

**TABLE 7e: Construction industry; future Member States (s.a.)<sup>(a)</sup>**

		Since 01/1990						2004								2005			
		Min.		Ave.		Max.		Apr.	May	June	July	Aug.	Sep.	Oct.	Nov.	Dec.	Jan.	Feb.	Mar.
		Value	Date	Value	Date	Value	Date												
CONFIDENCE INDICATOR	BG	-56	03-93	-29	1	03-05	-7	-17	-18	-13	-15	-13	-11	-9	-4	-9	-6	1	
	RO	-60	09-99	-9	35	06-96	-12	-7	-7	-6	-13	-17	-6	-6	-8	-12	-16	-15	
ORDER BOOKS	BG	-74	10-00	-43	-20	12-04	-32	-31	-31	-33	-32	-30	-29	-23	-20	-21	-26	-24	
	RO	-89	09-99	-11	64	03-98	-30	-22	-18	-18	-27	-25	-23	-20	-23	-24	-26	-31	
EMPLOYMENT EXPECTATIONS	BG	-50	01-93	-14	27	03-05	18	-2	-6	8	3	4	7	6	11	4	14	27	
	RO	-39	06-97	-7	38	03-01	6	8	4	5	1	-10	10	7	7	1	-5	1	

(a) The confidence indicator is the average of both components.