



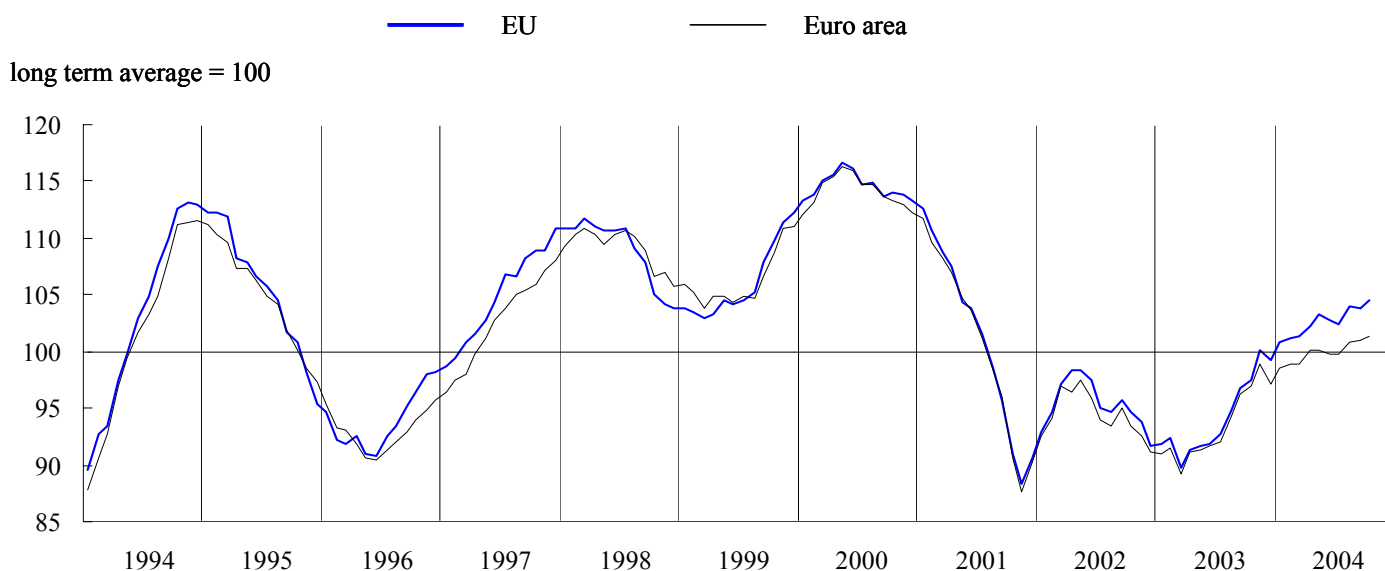
BUSINESS AND CONSUMER SURVEY RESULTS

October 2004

Next publication of Business and Consumer Survey Results scheduled for 30 November 2004

http://europa.eu.int/comm/economy_finance/indicators/businessandconsumersurveys_en.htm

GRAPH 1: Economic sentiment indicator (s.a.)



Improvement of economic sentiment in both the EU and the euro area

The *economic sentiment indicator (ESI)* for the *EU* rose in October by 0.6 points, reaching a level of 104.5. In the *euro area*, economic sentiment also improved although by a more moderate 0.3 points; the indicator reached 101.3.

Overall, changes in the components of the ESI were rather small. An exception is *retail trade confidence*, which saw a significant improvement in both areas, thereby correcting partially the strong deterioration of September. *Industrial confidence* moved sideward in the EU, but improved slightly in the *euro area*. Conversely, *services confidence* rose in the EU but remained unchanged in the euro area. *Consumer confidence* remained steady in the EU whereas it deteriorated marginally in the euro area. As for *construction confidence*, an unchanged value is registered for the EU, while the euro area saw an improvement.

At country level the picture is rather mixed, with changes in economic sentiment ranging from -7.4 (*Hungary*) to +7.4 (*Slovenia*). Almost all larger Member States saw improvements in the ESI, with the increase in *Italy* being most pronounced. By contrast, in *Spain* economic sentiment took a significant dive.

Industrial confidence unchanged in the EU, slightly up in the euro area

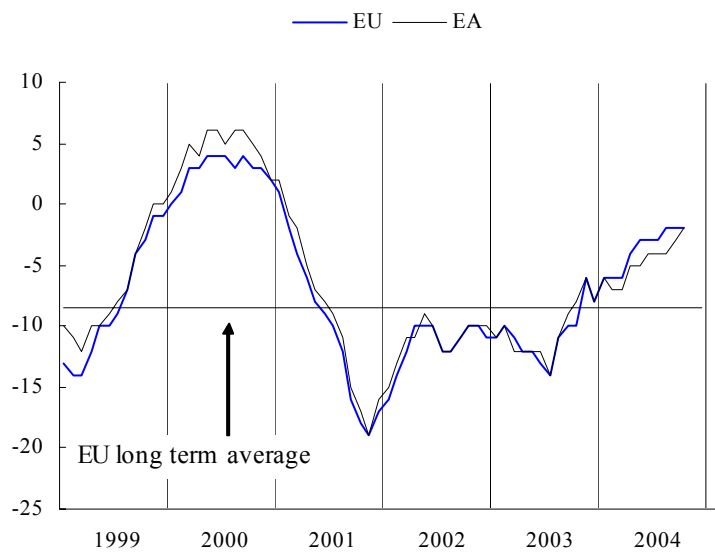
Industrial confidence remained unchanged in the EU but saw a small increase of 1 point in the euro area.

The relative stability of the confidence indicator is also reflected by the underlying components. Particularly, in the EU all components remained unchanged. In the euro area, the small overall increase is due to improvements in the assessment of *order books* and the *stock of finished products*, while *production expectations* remained unchanged.

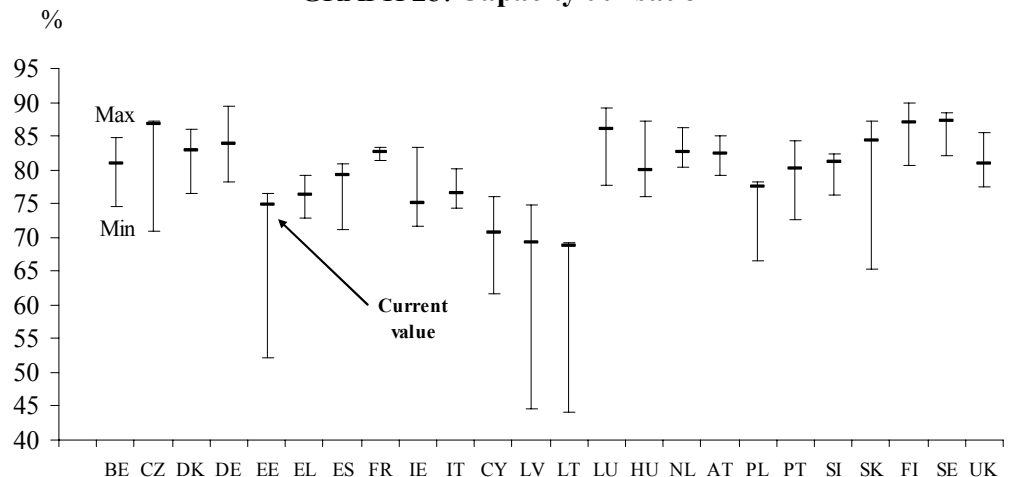
At the country level we can see a fairly stable picture as well. With the exception of *Luxembourg, Estonia* and the *Slovak Republic*, there were no large changes in industrial confidence.

The results of the *quarterly survey in the manufacturing sector*, which was carried out in October 2004, suggest a slight worsening in the outlook for industry in comparison with the previous survey of July. This is particularly true for the assessment of *new orders*, which saw a clear deterioration, especially in the euro area. Further, the *number of months of assured production* declined slightly. On the other hand, *export volume expectations* improved.

GRAPH 2: Industrial confidence indicator



GRAPH 2b: Capacity utilisation



Capacity utilisation remained fairly stable in both the EU and the euro area. However, the dominant picture at country level is a decline in the capacity utilisation, notably in *Belgium, Spain, France, Italy, the Netherlands, the UK* and most of the *new Member States*. Among the few countries that escaped this tendency are *Germany, Finland* and *Sweden*. While capacity utilisation remains above the historical average for a majority of the EU Member States, this is not the case for the EU and the euro area as a whole as in larger Member States capacity utilisation remains mostly below the long-term average. A noteworthy development has taken place in the *Slovak Republic*, where capacity utilisation has surged from a historical low just one year ago to a value close to the historical high.

At sub-sector level, a decline is registered for capacity utilisation in the *investment goods* sector, while the *intermediate goods* saw an increase. Among the branches where changes were most noticeable, *basic metals* and *motor vehicles* are to be mentioned, with an improvement in the former and a decline in the latter.

Services confidence slightly up in the EU

Confidence in the service sector has increased slightly in the EU in October, but remained unchanged in the euro area. The developments in the two areas, which over the longer term were fairly similar, seem to have been diverging over the last 6 months. Whereas the indicator for the euro area is at the same level as it was 12 months ago, the EU has seen a rise from a value of 10 in November 2003 to a value of 15 in October 2004. The main factor behind this is the development in the *UK* where service confidence has risen by a full 25 points over the last 12 months.

The increase in the services confidence indicator for the EU is the net result of, on the one hand, a more positive evaluation of the *current business situation* and *recent demand developments* and, on the other, a more pessimistic view of *demand expectations*.

While the confidence indicator remained fairly stable at an aggregate level, at country level significant changes can be observed. A strong improvement of services confidence was recorded in *Ireland, Finland, Sweden* and *Italy*, while confidence in *Spain, Latvia* and the *Slovak Republic* registered a significant drop.

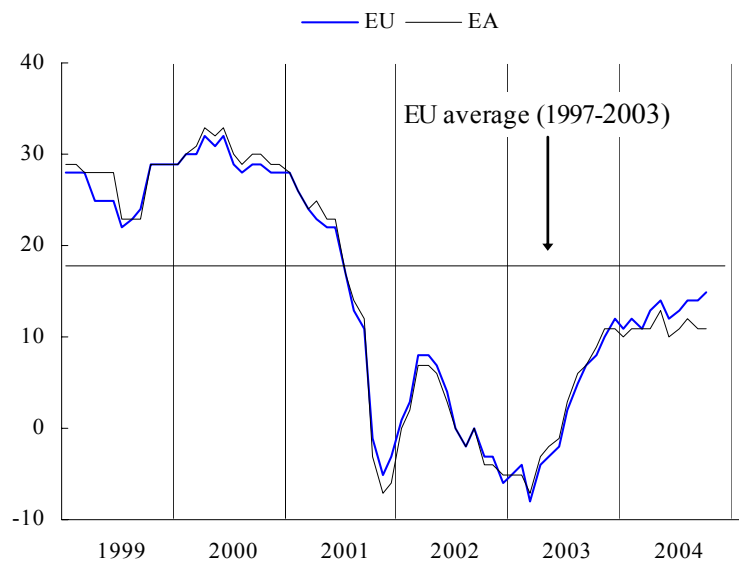
Consumer confidence unchanged in the EU, but slightly down in the euro area

Consumer confidence remained unchanged in the EU and recorded a small fall in the euro area. Consumer confidence has been fairly steady during 2004, following its strong growth in 2003.

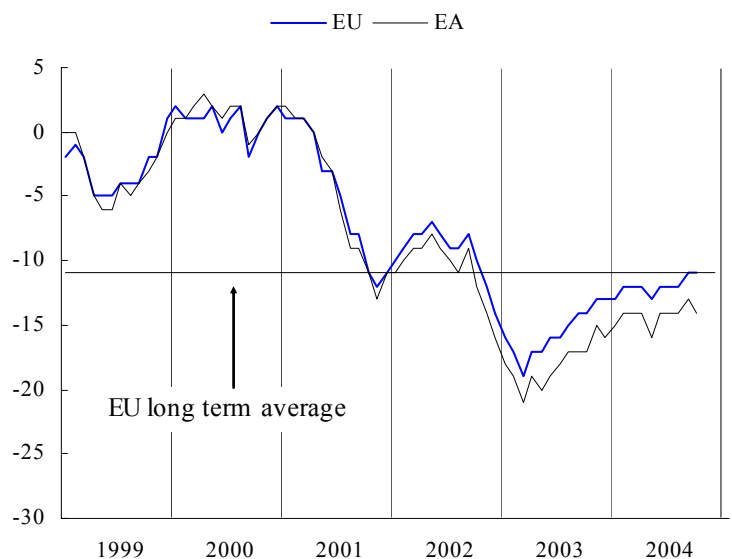
The development of the overall indicator was exactly matched by its components. In other words, in the EU all components remained unchanged while for the euro area all components fell by 1 point.

Fairly stable consumer confidence is also dominating the situation at country level. Only *Slovenia* and *Ireland* saw a more than marginal rise in confidence while the *Netherlands* was the only country where a significant fall was recorded. Looking at the development in the longer term it can be seen that, compared with 12 months ago, only *Germany, Italy, Cyprus* and *Latvia* registered a fall in confidence. *Greece, France, Ireland, Poland, Slovenia* and the *Slovak Republic*, on the other hand, all saw a rise in confidence of more than 10 points

GRAPH 3: Services confidence indicator



GRAPH 4: Consumer confidence indicator



Confidence in retail trade improved in both the EU and euro area

The *retail trade confidence indicator* increased by 3 points in both the EU and the euro area. The rather erratic behaviour of the confidence indicator makes it difficult to discover a trend. Whether we are still in the upward trend that started at the second quarter of 2003 or we are in a stationary trend since the beginning of this year is unclear.

The improvement of the indicator is mainly due to a strong increase in the assessment of the *expected business situation* supported by a slight improvement of the *volume of stocks*. The assessment of the *present business situation* did not change in the EU but deteriorated slightly in the euro area.

At country level, developments were quite diverse. The strongest increases in confidence were recorded in *Germany, France* and the *UK*, while a significant fall was registered in *Hungary, Austria* and the *Slovak Republic*. The increase by 7 points in the *UK* came after a dramatic fall of 23 points over the summer months.

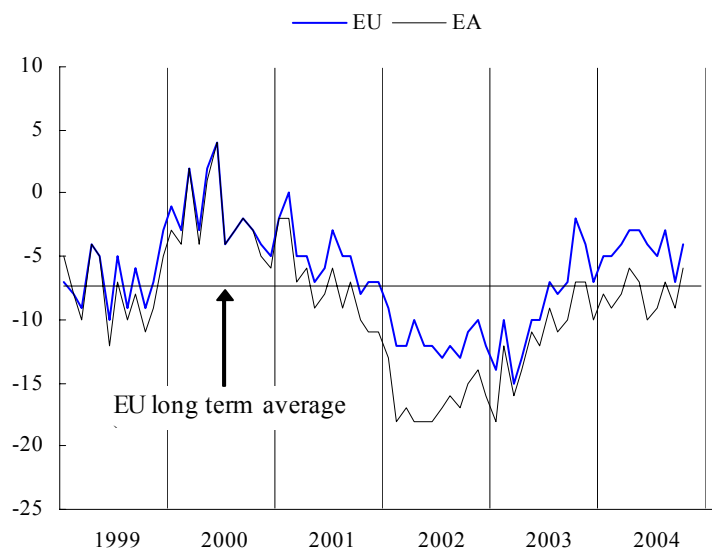
Confidence in the construction unchanged in the EU

Compared with September, the *construction confidence indicator* did not change in the EU while it improved by 2 points in the euro area. The indicator seems to continue its slow upward trend that started in the second half of 2003.

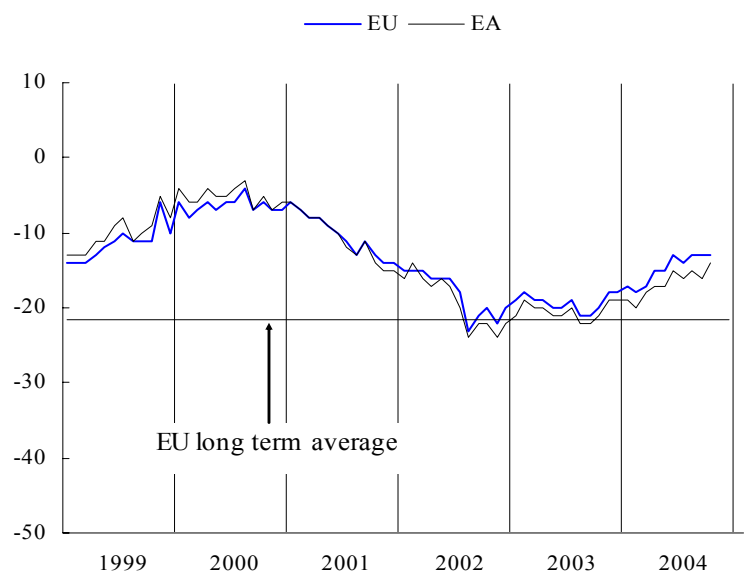
Looking at the components, a slightly more negative view concerning the assessment of *current order books* can be observed in both the euro area and the EU. *Employment expectations*, however, turned slightly more optimistic in the EU and considerably more optimistic in the euro area.

At country level, the indicator improved very strongly in *Luxembourg* and quite strongly in *Spain, Cyprus* and *Latvia*. A considerable fall in confidence was recorded in *Estonia, Hungary, Slovenia* and the *UK*

GRAPH 5: Retail confidence indicator



GRAPH 6: Construction confidence indicator

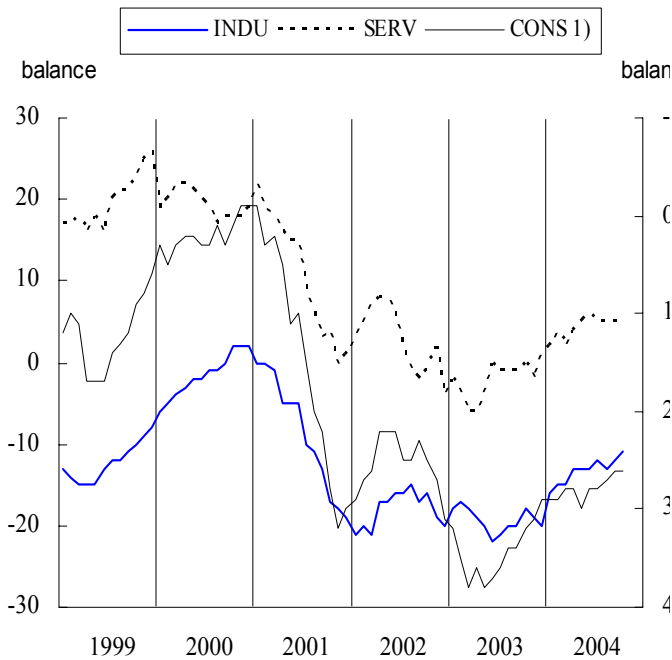


Employment, unemployment and price expectations in the EU

Employment expectations in the EU show a very stable picture. The expectations of service sector managers and of consumers remained unchanged while managers in the industry sector had a slightly more optimistic view on the employment developments.

Regarding *price expectations*, the picture is equally stable. Consumers and industrial managers did not change their price expectations while managers in the building industry adapted their expectations downward.

GRAPH 7: Employment and unemployment



1) Unemployment expectations (Right Hand Scale)

GRAPH 8: Price expectations

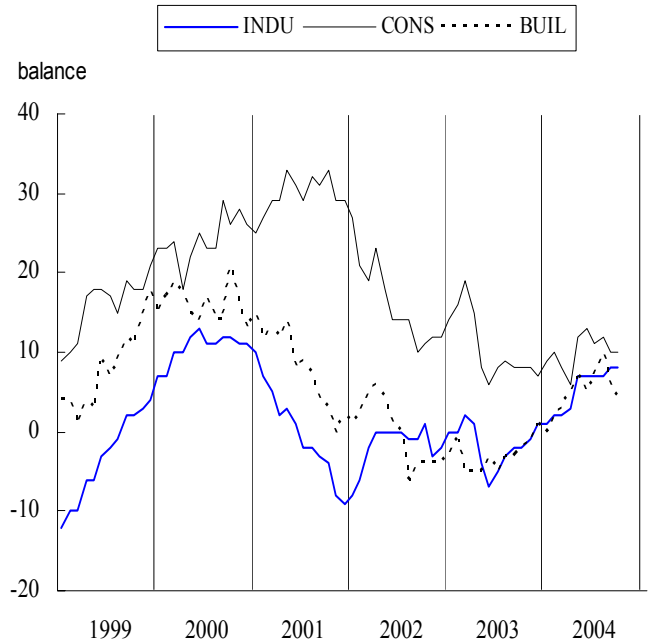


TABLE 18* Indicators of confidence and economic sentiment(s.a.)		Since 01/1990 ⁽¹⁾																
		2003						2004										
		Min.		Ave.		Max.		Nov.	Dec.	Jan.	Feb.	Mar.	Apr.	May	June	July	Aug.	Sep.
		Value	Date	Value	Date	Value	Date											
EU	1. Industry	-28	07-93	-8	7 12-94	-6	-8	-6	-6	-6	-4	-3	-3	-3	-2	-2	-2	
	2. Services	-8	03-03	18	32 06-00	10	12	11	12	11	13	14	12	13	14	14	15	
	3. Consumer ^(a)	-27	07-93	-11	2 12-00	-13	-13	-13	-12	-12	-12	-12	-13	-12	-12	-12	-11	-11
	4. Retail trade	-18	03-93	-7	4 06-00	-4	-7	-5	-5	-4	-3	-3	-4	-5	-3	-7	-4	
	5. Construction	-42	10-93	-22	4 02-90	-18	-18	-17	-18	-17	-15	-15	-13	-14	-13	-13	-13	
	=6. ESI ^(a)	76.5	07-93	100.0	116.6 05-00	100.2	99.2	100.8	101.1	101.4	102.2	103.3	102.8	102.5	104.0	103.9	104.5	
Euro area:	1. Industry	-31	07-93	-8	6 09-00	-6	-8	-6	-7	-7	-5	-5	-4	-4	-4	-3	-2	
	2. Services	-7	03-03	18	34 08-98	11	11	10	11	11	11	13	10	11	12	11	11	
	3. Consumer ^(a)	-29	08-93	-12	3 04-00	-15	-16	-15	-14	-14	-14	-16	-14	-14	-14	-13	-14	
	4. Retail trade	-21	03-93	-9	8 08-90	-7	-10	-8	-9	-8	-6	-7	-10	-9	-7	-9	-6	
	5. Construction	-44	08-96	-21	4 03-90	-19	-19	-19	-20	-18	-17	-17	-15	-16	-15	-16	-14	
	=6. ESI ^(a)	75.9	07-93	100.0	116.3 05-00	98.9	97.2	98.5	98.9	98.9	100.1	100.1	99.7	99.8	100.9	101.0	101.3	
BE	1. Industry	-33	04-93	-11	5 06-00	-10	-8	-9	-8	-7	-3	-4	-4	3	-1	-1	0	
	2. Services	-8	03-03	13	33 03-98	8	2	7	8	9	12	10	12	18	8	15	17	
	3. Consumer	-27	08-93	-6	17 12-00	-5	-7	-5	-4	-3	-4	-6	-1	-4	-2	-2	-2	
	4. Retail trade	-25	05-93	-6	12 04-90	-9	-13	-3	-9	-7	4	-1	-2	-5	-3	1	-1	
	5. Construction	-35	11-95	-12	10 02-00	-13	-12	-12	-13	-10	-10	-8	-8	-9	-9	-5	-5	
	=6. ESI	76.8	04-93	100.0	120.2 06-00	100.7	98.9	100.9	101.4	102.6	106.7	105.0	106.4	111.3	106.0	109.6	109.8	
CZ	1. Industry	-31	03-99	-1	27 06-00	9	5	1	7	8	7	5	10	9	10	10	12	
	2. Services ^(a)	32	12-03	41	52 07-02	49	32	35	38	36	42	45	45	45	43	40	38	
	3. Consumer	-36	03-98	-16	1 04-01	-19	-20	-21	-26	-24	-21	-15	-14	-10	-10	-12	-11	
	4. Retail trade	-2	02-99	13	26 01-03	20	21	13	9	15	15	16	18	20	15	25	25	
	5. Construction	-64	06-99	-19	3 06-95	-10	-8	-4	-5	-8	-7	-1	2	-5	-6	-10	-10	
	=6. ESI	69.8	03-99	100.0	117.7 04-01	112.3	97.3	98.0	99.9	98.9	103.6	106.9	112.0	111.8	109.4	106.4	107.3	
DK	1. Industry	-26	12-98	-2	16 12-94	6	2	0	4	1	4	4	8	11	6	3	3	
	2. Services	11	03-03	25	37 04-04	30	29	27	29	32	37	32	29	28	28	30	35	
	3. Consumer	-11	10-90	6	17 12-97	5	6	9	5	7	11	10	11	11	13	11		
	4. Retail trade	-6	10-01	16	37 11-94	18	12	13	15	20	27	20	20	24	24	28		
	5. Construction	-38	12-91	-9	20 03-98	-14	-15	-16	-11	-10	-7	-4	-6	-6	-5	-2	-2	
	=6. ESI	74.3	12-98	100.0	121.3 09-94	111.9	109.8	106.8	109.7	110.1	115.5	111.8	112.8	113.4	110.9	110.7	113.0	
DE	1. Industry	-35	04-93	-11	11 09-90	-12	-13	-10	-10	-11	-8	-9	-10	-9	-8	-7	-6	
	2. Services	-23	12-02	26	52 03-99	15	14	16	15	15	14	17	11	12	13	12	11	
	3. Consumer	-28	10-93	-11	6 08-00	-14	-15	-16	-13	-16	-17	-18	-15	-17	-18	-16	-18	
	4. Retail trade	-44	01-03	-18	21 02-91	-25	-22	-23	-21	-26	-21	-21	-28	-27	-23	-28	-22	
	5. Construction	-62	11-02	-36	3 01-91	-54	-52	-50	-51	-50	-49	-48	-48	-50	-53	-53	-54	
	=6. ESI	80.5	07-93	100.0	120.4 09-90	95.6	95.2	96.5	97.2	96.2	96.7	96.9	95.7	95.5	96.5	96.8	97.1	
EE	1. Industry	-31	07-92	4	19 03-01	9	4	10	12	13	14	18	17	10	10	12	7	
	2. Services ^(a)	8	12-03	25	43 05-04	20	8	9	20	25	37	43	31	26	20	14	13	
	3. Consumer	-56	04-93	-25	0 03-03	-13	-18	-12	-16	-16	-21	-18	-14	-14	-11	-11		
	4. Retail trade ^(a)	-37	03-99	5	37 05-04	19	-1	1	22	27	34	37	30	22	23	21	22	
	5. Construction ^(a)	-46	03-99	1	32 07-02	4	-1	1	3	9	16	27	27	22	21	20	12	
	=6. ESI	70.9	07-92	100.0	117.7 05-04	105.1	97.6	100.9	101.2	103.4	111.6	117.7	114.1	109.2	105.0	103.2	100.4	
EL	1. Industry	-12	09-90	1	13 03-00	4	6	7	4	6	9	7	4	0	-1	-3	:	
	2. Services	-14	04-03	28	62 08-00	16	23	35	31	31	28	26	24	24	17	7	:	
	3. Consumer	-44	07-03	-30	-6 04-00	-37	-42	-34	-32	-19	-18	-22	-23	-27	-28	-26	-25	
	4. Retail trade	-24	06-95	1	26 03-04	23	19	19	16	26	23	20	17	15	16	18	:	
	5. Construction	-51	09-94	-9	33 04-00	17	9	6	6	-1	-4	-6	-13	-24	-36	-46	:	
	=6. ESI	78.9	09-90	100.0	127.7 07-00	101.5	103.5	108.7	104.3	112.4	115.4	110.6	106.8	101.8	97.6	93.7	:	
ES	1. Industry	-44	01-93	-9	7 04-00	-1	-4	-4	-2	-3	-1	-1	-4	-3	-3	-2	-2	
	2. Services	10	10-04	32	56 06-98	19	22	20	20	22	23	26	22	16	16	17	10	
	3. Consumer	-37	10-92	-11	6 03-00	-12	-11	-12	-12	-11	-8	-9	-11	-11	-11	-13	-12	
	4. Retail trade	-36	02-93	-6	10 06-00	1	0	-2	-1	0	2	-5	-5	-6	-9	-10	-11	
	5. Construction	-57	10-92	-4	42 01-99	8	11	2	5	12	10	7	7	5	25	18	26	
	=6. ESI	69.8	01-93	100.0	116.7 04-00	99.9	99.9	98.2	99.6	100.8	102.3	103.5	99.6	97.4	97.1	98.0	95.4	
FR	1. Industry	-41	07-93	-8	15 06-00	-3	-6	-5	-5	-4	-3	-1	-2	-2	-1	0		
	2. Services	-22	06-93	2	25 06-90	0	1	4	4	3	4	3	4	7	6	6	8	
	3. Consumer ^(a)	-34	08-93	-18	4 01-01	-24	-24	-15	-16	-15	-15	-17	-18	-16	-14	-11	-11	
	4. Retail trade	-37	04-97	-16	7 10-04	-3	-11	-5	-3	-3	-4	-1	-3	-1	0	0	7	
	5. Construction	-61	03-93	-18	34 10-00	-4	-1	3	-3	-4	5	5	3	1	3	6	6	
	=6. ESI ^(a)	75.1	06-93	100.0	119.1 04-00	102.6	100.6	104.3	104.9	104.7	105.9	105.2	105.8	106.6	107.1	108.7	109.9	
IE	1. Industry	-23	11-01	-1	21 11-99	0	-5	1	-6	-12	1	3	5	1	-13	-5	-4	
	2. Services	-14	05-03	18	44 08-98	7	1	0	-4	4	-1	2	-7	8	4	-12	-4	
	3. Consumer	-31	03-93	-5	19 01-00	-8	-10	-8	-7	-5	-6	-5	-6	3	3	6	9	
	4. Retail trade	-21	05-03	4	24 06-00	-9	-5	-7	-7	-12	-6	-3	-3	2	0	-3	1	
	5. Construction	-54	09-02	9	58 06-97	5	18	22	2	9	26	17	30	36	39	36	33	
	=6. ESI	79.0	06-93	100.0	122.5 11-99	97.9	94.4	96.9	92.0	92.2	97.3	99.4	98.6	103.2	93.3	95.0	96.5	
IT	1. Industry	-22	01-93	-4	16 05-00	-2	-5	-4	-3	-4	0	-3	-3	0	0	0	0	
	2. Services	-5	10-02	17	43 02-98	16	23	4	12	5	7	13	14	15	17	11	17	
	3. Consumer	-38	04-93	-13	2 06-01	-14	-15	-18	-21	-19	-18	-19	-19	-20	-20	-20	-18	
	4. Retail trade	-19	10-96	8	39 10-95	14	8	9	1	9	12	5	6	11	15	9	6	
	5. Construction	-68	10-93	-14	21 05-90	-1	-6	-7	-11	-2	-8	-5	10	13	3	3	2	
	=6. ESI	75.4	04-93	100.0	119.3 06-00	101.8	99.1	95.7	96.2	94.7	97.9	99.0	98.8	100.6	101.5	99.3	101.5	
CY	1. Industry	-9	04-03	3	13 04-02	5	0	7	7	4	5	5	10	10	6	8		
	2. Services ^(a)	-16	02-03	3	25 10-04	11	9	0	10	7	16	14	11	8	8	22	25	
	3. Consumer	-44	07-04	-27	-14 06-01	-26	-30	-33	-36	-35	-34	-34	-41	-44	-41	-37	-35	
	4. Retail trade ^(a)	-21	04-03	-7	4 01-04	1	-12	4	-3	-3	-7	-5	-5	-4	-5	-3	-2	
	5. Construction ^(a)	1	09-04	17	41 07-04													

		TABLE 1*(continued) : Indicators of confidence and economic sentiment (s.a.)																	
		Since 01/1990 ^(*)						2003						2004					
		Min.		Ave.	Max.		Nov.	Dec.	Jan.	Feb.	Mar.	Apr.	May	June	July	Aug.	Sep.	Oct.	
		Value	Date	Value	Date														
LT	1. Industry	-37	11-98	-15	1 07-04	-3	-1	-7	-7	-5	-4	-3	-4	1	-5	-3	-1		
	2. Services ⁽ⁿ⁾	5	12-03	18	40 04-03	10	5	14	9	19	30	23	15	14	14	23	19		
	3. Consumer	-33	05-01	-16	-2 10-04	-11	-12	-15	-14	-12	-13	-13	-8	-8	-8	-3	-2		
	4. Retail trade	-25	09-00	-6	26 06-04	3	2	-1	4	26	25	23	26	11	9	11	13		
	5. Construction	-76	09-00	-44	-8 10-02	-10	-24	-25	-22	-11	-17	-15	-17	-21	-22	-12	-11		
	=6. ESI	74.9	11-98	100.0	124.7 10-04	114.0	111.5	108.5	107.3	117.2	122.6	118.2	117.7	119.8	114.9	124.0	124.7		
LU	1. Industry	-36	05-92	-10	25 04-95	-25	-17	-21	-10	-7	-4	6	11	14	18	17	8		
	2. Services	:	:	:	:	:	:	:	:	:	:	:	:	:	:	:	:		
	3. Consumer ⁽ⁿ⁾	-5	11-02	4	14 02-02	-1	-2	1	3	2	-1	1	5	5	4	7	5		
	4. Retail trade	:	:	:	:	:	:	:	:	:	:	:	:	:	:	:	:		
	5. Construction	-74	03-94	-27	24 03-90	-27	-28	-31	-38	-42	-47	-44	-37	-30	-28	-35	-19		
	=6. ESI	83.1	06-96	100.0	123.1 04-95	89.8	93.8	92.4	100.3	99.9	100.1	106.2	109.8	111.7	112.7	114.1	108.4		
HU	1. Industry	-15	05-99	-2	8 04-98	-1	1	-3	-6	-4	3	-6	0	-5	-2	-2	-5		
	2. Services ⁽ⁿ⁾	-10	10-04	2	14 03-02	0	-1	-2	4	1	4	4	1	1	-3	-6	-10		
	3. Consumer	-59	04-95	-29	0 08-02	-29	-29	-33	-33	-33	-32	-27	-25	-25	-26	-24	-24		
	4. Retail trade	-19	10-04	-6	9 02-98	-4	-10	-13	-9	-11	-7	-6	-9	-10	-12	-14	-19		
	5. Construction	-22	01-04	-7	12 09-98	-15	-16	-22	-18	-15	-11	-11	-6	-11	-8	-10	-16		
	=6. ESI	74.1	05-99	100.0	124.3 04-98	99.7	100.0	91.4	94.6	94.8	104.5	96.9	102.1	95.2	94.3	90.4	83.0		
NL	1. Industry	-12	06-03	-2	6 10-00	-7	-6	-5	-6	-4	-4	-1	0	-1	-2	-2	-1		
	2. Services	3	06-03	18	35 03-99	7	4	6	5	8	6	7	4	5	8	10	8		
	3. Consumer	-20	07-93	4	31 04-00	-11	-10	-13	-6	-10	-8	-11	-6	-3	1	1	-3		
	4. Retail trade	-16	12-03	13	29 10-99	-9	-16	-9	-7	-11	-10	-10	-10	-10	-6	-5	-3		
	5. Construction	-25	06-03	-3	27 12-00	-23	-24	-19	-18	-22	-15	-17	-17	-16	-14	-12	-7		
	=6. ESI	79.1	05-93	100.0	117.0 12-97	86.8	87.8	88.9	89.9	91.3	91.2	94.8	95.4	94.2	95.5	96.4	95.5		
AT	1. Industry	-30	09-93	-12	8 03-90	-6	-9	-9	-10	-13	-9	-9	-8	-7	-7	-7	-5		
	2. Services	0	01-02	16	30 03-98	15	14	12	13	16	16	16	15	16	19	17	19		
	3. Consumer	-16	04-96	-1	11 08-00	-2	-2	-3	-2	-2	-3	-5	-2	-1	-2	-3	-2		
	4. Retail trade	-29	03-03	-13	4 07-00	-11	-14	-14	-12	-7	-2	-5	-13	-12	-14	-8	-14		
	5. Construction	-60	04-96	-31	-13 02-03	-31	-26	-24	-27	-25	-23	-24	-29	-25	-24	-25	-23		
	=6. ESI	71.9	04-96	100.0	119.9 05-00	106.2	102.3	100.7	101.6	102.2	105.8	105.1	104.7	107.1	107.9	106.6	109.2		
PL	1. Industry	-29	10-01	-15	9 09-97	-15	-12	-10	-8	-7	-7	-9	-6	-5	-7	-8	-9		
	2. Services ⁽ⁿ⁾	-8	03-03	-1	6 08-04	0	0	-1	-7	-1	2	1	4	-4	6	2	3		
	3. Consumer	-41	05-01	-33	-21 08-04	-36	-29	-31	-33	-32	-30	-25	-23	-26	-21	-24	-24		
	4. Retail trade	-19	01-02	-6	7 07-98	-11	-11	-4	-7	-7	-6	-4	-4	-6	-9	-9	-9		
	5. Construction	-63	12-02	-45	-23 03-98	-53	-58	-48	-48	-47	-43	-42	-41	-37	-37	-38	-33		
	=6. ESI	76.0	02-99	100.0	136.8 08-04	100.4	110.5	109.5	96.4	112.4	119.8	120.1	132.5	108.6	136.8	124.0	124.8		
PT	1. Industry ^(b)	-28	07-93	-7	6 03-98	-17	-12	-11	-12	-10	-11	-9	-8	-7	-6	-8	-8		
	2. Services	-17	05-03	8	29 06-01	0	-9	-7	-1	7	10	6	3	5	5	4	4		
	3. Consumer ^(b)	-48	03-03	-22	-1 07-91	-35	-36	-36	-37	-36	-38	-35	-31	-32	-32	-32	-34		
	4. Retail trade ^(b)	-27	01-03	-7	4 07-99	-3	-2	-8	-11	-13	-10	-7	-10	-6	-8	-5	-8		
	5. Construction	-57	02-03	-26	-1 12-97	-43	-47	-40	-38	-56	-42	-43	-42	-45	-40	-41	-38		
	=6. ESI ^(b)	74.0	06-93	100.0	113.8 05-97	88.1	87.8	87.2	89.3	93.1	94.1	95.0	93.6	94.8	95.0	97.1	94.0		
SI	1. Industry	-21	03-99	-3	18 06-00	1	-2	-2	-3	-1	6	3	2	3	5	6	6		
	2. Services ⁽ⁿ⁾	21	09-04	26	34 10-02	22	22	25	23	26	29	26	27	21	25	21	23		
	3. Consumer	-29	06-99	-19	-9 10-04	-22	-23	-21	-26	-22	-22	-19	-19	-18	-16	-17	-9		
	4. Retail trade	3	01-01	10	23 04-99	12	11	13	13	11	12	14	13	11	13	10	12		
	5. Construction ⁽ⁿ⁾	-28	05-02	-9	8 07-04	-12	-10	-6	-6	-11	5	-2	8	8	7	5	-2		
	=6. ESI	77.0	03-99	100.0	131.4 06-00	99.0	96.1	99.9	95.1	99.7	109.0	107.1	107.4	103.9	110.3	106.0	113.4		
SK	1. Industry	-23	12-95	5	26 05-96	15	1	0	14	11	12	6	6	2	11	15	11		
	2. Services ⁽ⁿ⁾	32	07-02	50	61 05-03	45	37	46	52	45	52	51	38	40	48	56	50		
	3. Consumer	-50	08-99	-34	-22 07-04	-35	-34	-32	-35	-27	-26	-26	-22	-22	-23	-25	-25		
	4. Retail trade	-17	11-94	8	34 11-98	12	12	-2	-7	7	11	14	13	10	-2	5	0		
	5. Construction	-86	07-99	-29	18 03-97	-19	-28	-30	-34	-31	-27	-23	-16	-18	-16	-14	-13		
	=6. ESI	71.3	03-99	100.0	125.0 05-96	101.7	88.3	94.0	102.0	103.4	108.7	105.2	99.9	96.8	107.2	113.3	107.4		
FI	1. Industry	-24	01-93	2	29 11-94	-1	-2	-1	0	4	1	-1	11	11	10	8	5		
	2. Services	-11	09-03	25	61 09-00	12	12	12	14	-3	8	-3	-1	18	16	23	31		
	3. Consumer	6	11-01	15	23 02-00	13	14	11	13	13	14	15	13	17	15	14			
	4. Retail trade	-17	11-00	-5	10 05-04	1	-9	0	6	8	6	10	0	2	-3	-3	1		
	5. Construction	-98	09-91	-19	48 06-98	3	-5	-3	7	5	-1	7	-2	-1	2	-1	0		
	=6. ESI	74.4	04-91	100.0	120.8 11-94	102.3	100.6	101.0	102.6	101.6	100.3	99.8	102.7	106.6	105.9	106.8	106.5		
SE	1. Industry	-29	10-01	-5	15 05-00	-8	-6	-1	-2	-3	1	3	6	8	4	7	5		
	2. Services	-24	03-03	15	46 02-01	5	13	10	11	14	17	24	29	27	26	29	36		
	3. Consumer	-10	09-96	8	24 08-00	4	4	6	6	2	6	6	6	4	6	6	8		
	4. Retail trade	-8	10-01	7	27 04-00	10	4	-1	4	6	5	4	5	0	6	1	0		
	5. Construction	-83	12-93	-40	25 01-01	-57	-58	-56	-53	-52	-33	-28	-21	-9	-18	-6	-1		
	=6. ESI	79.0	10-01	100.0	127.2 03-00	95.4	97.9	100.9	100.9	99.7	105.8	108.4	110.6	111.8	110.8	113.1	115.0		
UK	1. Industry	-40	02-91	-12	11 02-95	-11	-10	-4	-6	-2	-8	3	0	-4	2	-1	0		
	2. Services	-20	12-02	15	37 11-97	0	10	15	14	11	16	17	16	16	19	27	25		
	3. Consumer	-28	10-92	-9	7 04-98	-4	-3	-3	-2	-2	-2	-5	-6	-4	-5	-3	-2		
	4. Retail trade	-27	09-92	-3	20 06-04	9	3	8	11	13	9	15	20	6	5	-3	4		
	5. Construction	-80	06-91	-21	5 08-04	-2	-3	1	3	1	1	2	4	4	5	3	-3		
	=6. ESI	70.8	02-91	100.0	118.5 12-97	100.9	104.1	109.8	107.5	110.1	106.3	112.9	111.4	107.9	111.1	111.8	112.6		

In the tables: (s.a.) = seasonally adjusted, (n) = not seasonally adjusted, : = not available.

(*) Minimum, maximum and averages are calculated over the period of availability which is not necessarily 01/1990.

The economic sentiment indicator is composed of the industrial confidence indicator (40%), the service confidence indicator (30%), the consumer confidence indicator (20%), the construction confidence indicator (5%), and the retail trade confidence indicator (5%). Its long term average (1990-2003) equals 100.

The reported ESI average is based on this standardisation sample. All confidence indicators are balances.

(a) The French consumer questionnaire was modified in January 2004, in order to bring it into line with the EU harmonised programme. The series prior to and after this date are therefore not completely comparable. However, the breaks in French data series have a moderate impact on the European aggregates.

(b) The Portuguese series were revised due to a sample change. (see notes to tables 2a, 4 and 5)

Source: unless stated otherwise: European Commission business and consumer surveys.

TABLE 2a: Monthly survey of manufacturing industry (s.a.)^(a)

		Since 01/1990			2003		2004											
		Min.		Ave.	Max.													
		Value	Date		Value	Date	Nov.	Dec.	Jan.	Feb.	Mar.	Apr.	May	June	July	Aug.	Sep.	Oct.
INDUSTRIAL CONFIDENCE INDICATOR	EU	-28	07-93	-8	7	12-94	-6	-8	-6	-6	-6	-4	-3	-3	-3	-2	-2	-2
	Euro area	-31	07-93	-8	6	09-00	-6	-8	-6	-7	-7	-5	-5	-4	-4	-4	-3	-2
	BE	-33	04-93	-11	5	06-00	-10	-8	-9	-8	-7	-3	-4	-4	3	-1	-1	0
	CZ	-31	03-99	-1	27	06-00	9	5	1	7	8	7	5	10	9	10	10	12
	DK	-26	12-98	-2	16	12-94	6	2	0	4	1	4	4	8	11	6	3	3
	DE	-35	04-93	-11	11	09-90	-12	-13	-10	-10	-11	-8	-9	-10	-9	-8	-7	-6
	EE	-31	07-92	4	19	03-01	9	4	10	12	13	14	18	17	10	10	12	7
	EL	-12	09-90	1	13	03-00	4	6	7	4	6	9	7	4	0	-1	-3	:
	ES	-44	01-93	-9	7	04-00	-1	-4	-4	-2	-3	-1	-1	-4	-3	-3	-2	-2
	FR	-41	07-93	-8	15	06-00	-3	-6	-5	-5	-5	-4	-3	-1	-2	-2	-1	0
	IE	-23	11-01	-1	21	11-99	0	-5	1	-6	-12	1	3	5	1	-13	-5	-4
	IT	-22	01-93	-4	16	05-00	-2	-5	-4	-3	-4	0	-3	-3	0	0	0	0
	CY	-9	04-03	3	13	04-02	5	0	7	7	4	5	5	5	10	10	6	8
	LV	-44	04-93	-12	7	05-04	4	4	2	4	5	5	7	3	3	3	4	2
	LT	-37	11-98	-15	1	07-04	-3	-1	-7	-7	-5	-4	-3	-4	1	-5	-3	-1
	LU	-36	05-92	-10	25	04-95	-25	-17	-21	-10	-7	-4	6	11	14	18	17	8
	HU	-15	05-99	-2	8	04-98	-1	1	-3	-6	-4	3	-6	0	-5	-2	-2	-5
	NL	-12	06-03	-2	6	10-00	-7	-6	-5	-6	-4	-4	-1	0	-1	-2	-2	-1
	AT	-30	09-93	-12	8	03-90	-6	-9	-9	-10	-13	-9	-9	-8	-7	-7	-7	-5
	PL	-29	10-01	-15	9	09-97	-15	-12	-10	-8	-7	-7	-9	-6	-5	-7	-8	-9
PT ^(c)	-28	07-93	-7	6	03-98	-17	-12	-11	-12	-10	-11	-9	-8	-7	-6	-8	-8	
SI	-21	03-99	-3	18	06-00	1	-2	-2	-3	-1	6	3	2	3	5	6	6	
SK	-23	12-95	5	26	05-96	15	1	0	14	11	12	6	6	2	11	15	11	
FI	-24	01-93	2	29	11-94	-1	-2	-1	0	4	1	-1	11	11	10	8	5	
SE	-29	10-01	-5	15	05-00	-8	-6	-1	-2	-3	1	3	6	8	4	7	5	
UK	-40	02-91	-12	11	02-95	-11	-10	-4	-6	-2	-8	3	0	-4	2	-1	0	
PRODUCTION EXPECTATIONS	EU	-16	11-92	6	23	12-94	11	8	12	13	12	13	13	13	10	11	13	13
	Euro area	-18	12-92	5	21	12-94	10	6	10	11	11	11	10	10	8	8	11	11
Component of the industrial confidence indicator	BE	-36	04-93	-3	16	12-94	1	5	2	6	7	8	4	2	9	8	6	8
	CZ	-26	05-93	21	61	05-95	31	17	7	9	22	25	24	28	22	21	30	34
	DK	-23	12-98	10	30	02-98	25	19	16	14	14	18	8	16	21	17	9	11
	DE	-26	11-92	1	20	12-94	6	3	9	10	7	7	6	4	3	3	6	7
	EE	-70	04-92	18	68	03-02	19	11	28	37	39	21	29	25	19	20	17	20
	EL	3	02-91	26	44	02-00	33	32	29	27	29	31	31	23	18	16	14	:
	ES	-19	01-93	5	17	03-04	10	7	5	12	17	16	16	7	6	3	13	8
	FR	-29	07-93	6	27	10-00	13	8	9	11	12	13	12	14	11	12	14	15
	IE	-22	11-01	9	35	11-99	13	12	14	6	-3	23	20	16	12	-2	-10	1
	IT	-20	06-96	13	34	06-00	18	10	17	18	17	18	15	15	14	17	18	18
	CY	1	05-02	13	32	04-02	21	10	11	13	15	3	8	12	14	17	15	13
	LV	-20	04-93	15	41	03-02	17	14	11	16	20	17	21	16	18	20	21	19
	LT	-22	04-94	11	35	08-97	24	22	6	0	13	19	16	21	21	21	21	19
	LU	-42	10-91	-4	28	04-95	-10	-5	-9	11	6	16	22	16	27	24	23	15
	HU	-3	02-04	14	34	12-97	7	13	6	-3	0	16	1	10	0	10	12	2
	NL	-4	06-03	6	15	11-99	2	6	7	2	4	3	8	8	3	-1	4	5
	AT	-19	06-93	4	18	11-03	18	10	8	10	3	8	7	9	7	10	9	13
	PL	-4	10-01	21	44	02-03	11	20	26	31	26	24	19	26	24	26	20	21
	PT ^(c)	-11	04-03	5	21	01-97	-3	3	-3	-4	-4	-5	4	4	1	0	2	0
	SI	10	10-01	22	42	06-00	27	27	33	26	25	29	25	28	28	39	40	38
SK	-12	12-95	31	62	06-03	48	18	9	37	46	50	40	47	4	38	53	43	
FI	-26	06-91	12	44	07-04	15	8	15	24	31	19	18	43	44	33	34	28	
SE	-19	06-91	14	46	05-00	25	30	35	31	32	30	31	38	35	28	37	29	
UK	-38	02-91	5	33	03-95	3	7	17	12	12	8	21	16	7	18	14	17	
ORDER BOOKS	EU	-50	07-93	-20	2	05-00	-22	-22	-21	-21	-20	-16	-16	-14	-11	-11	-11	-11
	Euro area	-54	07-93	-19	5	06-00	-21	-21	-20	-21	-21	-16	-18	-15	-12	-12	-12	-11
Component of the industrial confidence indicator	BE	-51	05-93	-21	11	06-00	-27	-26	-24	-22	-21	-15	-13	-11	-4	-9	-7	-6
	CZ	-50	12-98	-7	30	01-01	-1	0	-3	12	1	-1	-2	3	5	5	5	5
	DK	-41	04-99	-6	32	12-94	-7	-12	-10	-2	-8	2	4	9	10	6	6	4
	DE	-61	07-93	-24	12	07-90	-28	-29	-26	-28	-29	-21	-24	-22	-19	-18	-17	-16
	EE	-43	10-92	0	28	06-02	6	-1	-1	-1	-1	12	15	13	1	4	10	-2
	EL	-30	12-93	-13	6	05-98	-12	-9	-1	-3	-4	0	-3	-5	-9	-10	-12	:
	ES	-65	01-93	-17	11	07-98	-7	-9	-8	-8	-12	-7	-9	-9	-5	-4	-4	-1
	FR	-64	06-93	-16	27	06-00	-18	-19	-16	-19	-16	-13	-14	-11	-10	-10	-11	-10
	IE	-36	06-93	-7	24	12-99	-13	-25	-8	-14	-26	-15	-9	-4	-21	-32	-8	-6
	IT	-44	02-93	-14	16	05-00	-15	-13	-19	-17	-18	-11	-18	-14	-7	-10	-9	-13
	CY	-39	02-03	-21	-3	07-04	-11	-19	-7	-8	-7	-6	-10	-11	-3	-9	-8	-7
	LV	-79	07-93	-42	-7	12-03	-9	-7	-11	-13	-15	-13	-10	-11	-16	-15	-14	-17
	LT	-79	11-98	-43	-9	11-93	-32	-29	-29	-23	-27	-28	-24	-25	-20	-34	-29	-22
	LU	-64	02-92	-18	34	12-97	-45	-36	-32	-38	-21	-24	-7	10	9	19	18	11
	HU	-40	03-03	-19	0	04-98	-15	-13	-17	-18	-14	-6	-16	-15	-15	-15	-15	-15
	NL	-25	01-93	-8	5	12-00	-17	-16	-13	-13	-10	-9	-7	-6	-3	-3	-6	-5
	AT	-57	04-96	-25	11	03-90	-29	-25	-24	-30	-31	-27	-27	-26	-23	-24	-23	-21
	PL	-77	01-02	-59	8	09-97	-56	-58	-54	-52	-48	-44	-45	-46	-41	-47	-42	-45
	PT ^(c)	-52	07-93	-19	8	03-98	-34	-32	-22	-25	-23	-24	-25	-16	-13	-10	-32	-19
	SI	-51	03-99	-19	12	06-00	-13	-19	-18	-21	-18	-6	-11	-13	-10	-13	-7	-9
SK	-70	03-99	-8	49	09-94	-15	-9	-2	1	-23	-20	-24	-28	0	-2	-6	-4	
FI	-70	09-91	-14	39	11-94	-24	-21	-24	-21	-20	-10	-20	-1	0	-1	-2	2	
SE	-66	03-92	-24	25	12-94	-26	-22	-19	-19	-21	-14	-11	-5	-6	-9	-6	-9	
UK	-62	07-91	-23	11	02-95	-25	-22	-22	-18	-11	-17	-4	-9	-7	0	-4	-4	

TABLE 2a: (continued) Monthly survey of manufacturing industry (s.a.)^(a)

		Since 01/1990						2003			2004								
		Min.		Ave.		Max.		Nov.	Dec.	Jan.	Feb.	Mar.	Apr.	May	June	July	Aug.	Sep.	Oct.
		Value	Date	Value	Date	Value	Date												
STOCKS OF FINISHED PRODUCTS ^(b)	EU	3	12-94	12	23	07-93	8	10	9	10	9	10	7	8	8	7	8	8	8
	Euro area	2	04-00	11	24	07-93	8	10	9	10	10	9	7	8	8	7	8	7	8
Component of the industrial confidence indicator	BE	-3	07-04	9	26	10-01	3	3	5	7	6	2	2	4	-3	1	1	3	3
	CZ	-12	04-00	18	46	08-93	2	1	0	0	0	4	7	0	-1	-4	6	2	2
	DK	-7	03-94	10	28	06-99	1	0	6	-1	4	9	0	0	-1	5	5	6	6
	DE	-9	09-90	10	25	08-93	14	13	12	13	11	11	9	11	10	8	9	8	8
	EE	-16	05-92	7	39	06-93	-2	-2	-3	-1	-2	-8	-11	-12	-10	-6	-10	-2	-2
	EL	1	06-94	11	22	09-90	9	5	7	13	8	4	8	7	8	9	11	.	.
	ES	-1	11-02	15	47	01-93	7	9	9	10	14	13	10	9	9	9	16	13	13
	FR	-2	04-00	14	34	06-93	3	6	8	7	10	11	7	7	8	8	6	5	5
	IE	-13	07-04	6	23	11-93	1	2	3	9	6	4	1	-3	-13	6	-4	6	6
	IT	1	06-00	10	22	02-92	8	13	9	10	11	8	5	9	7	7	9	6	6
	CY	-33	09-01	-17	-5	03-04	-5	-9	-16	-15	-5	-19	-16	-15	-19	-23	-11	-18	-18
	LV	-11	03-04	8	43	07-93	-5	-6	-5	-8	-11	-10	-9	-7	-6	-4	-5	-5	-5
	LT	-16	01-95	13	49	01-94	1	-4	-3	-3	1	3	0	8	-3	2	2	-1	-1
	LU	-22	03-95	8	31	03-02	20	11	21	4	7	4	-4	-7	-6	-10	-10	1	1
	HU	-6	11-03	3	15	12-98	-6	-4	-2	-2	-3	1	2	-4	0	1	4	3	3
	NL	-1	12-94	5	11	09-93	7	7	8	6	6	6	4	3	4	2	4	4	4
	AT	4	06-90	14	26	07-96	8	11	10	10	11	7	7	7	5	6	7	8	8
	PL	-11	10-94	3	19	02-99	1	-2	1	3	0	0	0	-2	-2	1	2	3	3
	PT^(c)	-7	09-04	8	25	06-93	13	8	9	7	4	3	5	11	8	8	-7	4	4
	SI	-1	06-00	14	28	02-96	12	15	21	13	10	6	6	10	8	10	15	11	11
SK	-27	02-01	9	55	05-94	-13	7	6	-5	-11	-6	-2	0	-2	4	3	6	6	
FI	-20	04-95	3	31	01-96	-6	-6	-5	3	0	7	1	10	11	2	9	14	14	
SE	3	03-00	17	37	11-01	23	25	18	18	21	12	12	15	6	7	9	6	6	
UK	6	03-04	18	32	11-98	12	14	8	13	6	16	7	7	13	12	14	13	13	
PRODUCTION TREND OBSERVED IN RECENT MONTHS	EU	-22	01-93	-1	19	01-95	0	3	4	2	-1	8	5	6	8	7	6	5	5
	Euro area	-26	04-93	-2	16	05-00	-1	2	3	0	-4	5	2	4	7	4	3	2	2
	BE	-20	02-93	-1	16	05-97	-2	1	6	2	-1	4	2	2	11	3	5	5	
	CZ	-32	10-98	11	42	11-00	9	40	26	32	11	12	14	22	31	21	11	20	
	DK	-21	04-99	11	41	09-94	13	15	16	16	12	19	19	25	21	15	13	15	
	DE	-32	02-02	-4	22	12-90	-4	2	3	0	-7	9	-4	2	6	0	-1	-5	
	EE	-24	03-99	13	56	06-01	16	12	20	8	15	37	35	34	28	28	21	15	
	EL	-5	10-90	15	36	01-00	16	27	32	20	19	13	21	24	20	18	14	.	
	ES	-44	04-93	0	21	04-95	14	7	12	5	0	3	4	4	6	11	7	9	
	FR	-38	07-93	3	36	01-95	-6	-3	0	3	5	8	16	14	13	11	9	12	
	IE	-25	10-01	6	38	03-00	11	-7	0	5	-10	16	12	9	9	-15	22	-2	
	IT	-36	05-93	-9	17	07-00	-9	-6	-12	-15	-17	-10	-15	-13	-10	-7	-6	-10	
	CY	-33	04-03	-11	14	04-04	0	-17	6	-3	0	14	-2	-7	-3	-2	-27	7	
	LV	-49	04-93	2	29	06-01	20	17	17	6	10	19	18	10	9	14	10	7	
	LT	-36	07-94	0	34	04-98	21	29	29	20	0	2	24	6	14	12	1	9	
	LU	-41	04-92	-3	32	04-95	-3	5	6	0	18	10	29	22	30	30	27	12	
	HU	-29	06-99	-1	27	04-98	0	2	-2	-7	1	10	8	7	9	8	2	3	
	NL	-12	05-93	3	14	10-97	8	4	10	5	7	8	9	10	11	5	1	3	
	AT	-28	06-93	4	27	03-90	12	16	13	8	11	13	15	11	17	13	21	15	
	PL	-18	04-01	0	23	04-04	2	0	8	13	15	23	9	9	13	6	6	12	
	PT^(c)	-18	05-03	-1	15	08-94	-2	-6	-8	-6	-11	-5	-7	-3	8	-1	-14	-16	
	SI	-19	02-99	8	39	05-00	18	7	9	9	10	17	6	6	13	13	9	12	
	SK	-30	12-96	16	78	12-03	33	78	46	-13	-7	44	7	8	49	27	-5	46	
	FI	-28	06-91	10	47	07-97	21	41	20	17	-2	24	21	28	13	32	35	34	
	SE	-28	07-91	9	48	12-94	14	9	8	19	18	31	22	25	28	29	31	23	
	UK	-46	06-91	-2	34	03-95	-5	3	8	1	6	12	17	10	9	19	19	16	
EXPORT ORDER BOOKS	EU	-44	08-93	-20	3	01-95	-21	-20	-21	-21	-19	-14	-14	-11	-8	-9	-9	-10	
	Euro area	-51	08-93	-20	4	10-00	-19	-19	-19	-21	-19	-13	-16	-11	-8	-9	-10	-9	
	BE	-56	05-93	-22	7	06-00	-24	-26	-19	-17	-16	-10	-5	-5	-4	-6	-5	-1	
	CZ	-41	12-98	-3	26	09-00	-5	-3	-8	5	-3	-5	-4	1	3	5	5	4	
	DK	-39	04-99	-4	25	09-94	-4	-11	-2	1	-5	8	6	10	12	7	8	2	
	DE	-60	08-93	-28	0	02-90	-25	-26	-23	-25	-24	-18	-18	-17	-11	-12	-10	-10	
	EE	-37	03-99	1	25	03-01	6	-5	-10	-5	0	0	2	-2	0	-2	10	0	
	EL	-36	05-03	-15	13	03-95	-19	-16	-11	-12	-21	-9	-9	-7	-11	-14	-18	.	
	ES	-55	01-93	-19	6	05-95	-12	-15	-15	-16	-26	-22	-21	-16	-15	-9	-15	-10	
	FR	-65	07-93	-13	36	06-00	-14	-6	-13	-17	-6	-3	-14	-5	-1	-2	-4	-2	
	IE	-53	09-93	-7	38	06-00	-25	-17	-2	4	-27	22	17	17	-34	-42	-20	-3	
	IT	-41	12-92	-12	28	03-95	-12	-16	-19	-19	-21	-9	-13	-7	-4	-8	-9	-15	
	CY	-51	05-03	-29	-9	09-04	-35	-28	-12	-21	-23	-16	-15	-21	-12	-13	-9	-10	
	LV	-59	12-98	-37	-15	12-03	-16	-15	-18	-19	-18	-18	-19	-19	-20	-21	-20	-21	
	LT	-65	04-99	-37	-13	06-01	-37	-32	-29	-27	-22	-26	-20	-25	-20	-37	-29	-23	
	LU	-75	11-91	-23	45	04-00	-51	-45	-40	-47	-35	-40	-20	4	-4	6	5	-2	
	HU	-44	12-02	-14	7	02-98	-23	-20	-22	-21	-20	-16	-15	-19	-15	-19	-19	-22	
	NL	-24	02-93	-6	11	10-00	-13	-12	-10	-11	-8	-5	-3	-1	3	4	-1	-2	
	AT	-58	04-96	-34	-1	03-90	-39	-38	-39	-42	-37	-39	-38	-33	-32	-31	-35	-33	
	PL	-75	12-01	-57	13	07-97	-56	-51	-54	-49	-49	-50	-49	-48	-47	-49	-50	-49	
	PT^(c)	-58	04-93	-16	22	01-95	-23	-24	-19	-18	-17	-20	-22	-18	-18	-19	-22	-21	
	SI	-53	05-99	-17	15	06-00	-15	-17	-18	-21	-16	-9	-10	-11	-6	-5	0	0	
	SK	-57	03-99	-9	53	01-94	-9	-10	-8	8	-22	-19	-22	-25	-17	-21	-5	-5	

TABLE 2a: (continued) **Monthly survey of manufacturing industry** (s.a.)^(a)

		Since 01/1990			2003		2004											
		Min.		Ave.	Max.		Nov.	Dec.	Jan.	Feb.	Mar.	Apr.	May	June	July	Aug.	Sep.	Oct.
		Value	Date	Value	Date													
EMPLOYMENT EXPECTATIONS	EU	-39	06-93	-15	2	12-00	-19	-20	-16	-15	-15	-13	-13	-13	-12	-13	-12	-11
	Euro area	-42	06-93	-14	4	12-00	-17	-20	-16	-15	-15	-13	-14	-13	-12	-15	-14	-12
	BE	-26	09-93	-9	9	12-00	-16	-14	-11	-8	-9	-7	-9	-6	-4	-5	-8	-7
	CZ	-58	06-99	-27	2	03-01	-24	-23	-24	-14	-14	-11	-8	-6	-6	-5	-4	-5
	DK	-23	06-93	-3	13	03-98	-7	-4	-3	1	1	0	3	3	4	0	-1	-4
	DE	-52	06-93	-18	8	02-90	-20	-23	-21	-21	-21	-20	-19	-17	-18	-18	-14	-15
	EE	-78	04-92	-14	10	03-04	-1	-6	7	6	10	9	5	7	2	3	-1	-5
	EL	-11	06-91	-2	12	05-02	-5	-5	-4	3	-1	2	-5	-3	2	1	1	.
	ES	-53	06-93	-9	9	03-01	-8	-9	-8	3	1	4	6	0	-7	-11	-12	-13
	FR	-50	09-93	-17	12	09-00	-27	-29	-22	-21	-21	-17	-17	-17	-18	-19	-20	-15
	IE	-34	12-92	-10	16	09-00	-7	-30	-22	-16	-16	3	-9	-8	-22	-18	-16	-7
	IT	-30	08-96	-5	11	11-00	-7	-9	-4	-5	-5	-5	-9	-6	-6	-11	-8	0
	CY	-15	04-02	9	41	10-04	3	5	38	6	7	22	4	5	29	7	4	41
	LV	-51	07-93	-10	8	10-04	7	4	-2	1	4	1	4	3	3	5	5	8
	LT	-59	06-94	-30	4	06-04	-10	-12	-3	-3	-5	4	1	4	-3	-3	-1	-5
	LU	-55	12-91	-27	1	09-01	-39	-28	-32	-27	-29	-37	-23	-23	-14	-15	-13	-23
	HU	-60	12-91	-17	10	12-97	2	-8	-14	-6	-9	-11	-15	-14	-13	-7	-6	-12
	NL	-30	06-93	-8	15	06-90	-15	-15	-12	-12	-11	-12	-11	-12	-7	-11	-10	-12
	AT	-29	05-96	-10	6	09-00	-9	-6	-5	-10	-1	-4	-3	-4	-5	-3	-5	-2
	PL	-55	06-00	-26	-5	10-04	-27	-24	-19	-17	-13	-11	-13	-11	-11	-13	-8	-5
	PT^(c)	-35	06-93	-15	-1	02-90	-25	-23	-23	-21	-22	-21	-21	-23	-21	-19	-22	-24
	SI	-42	09-96	-24	-10	07-04	-16	-18	-19	-18	-13	-15	-14	-14	-10	-13	-13	-14
	SK	-56	06-99	-24	1	06-96	-17	-19	-28	-34	-30	-29	-22	-30	-22	-18	-13	-13
	FI	-60	06-91	-16	14	12-00	-21	-34	-29	-34	-23	-21	-19	-28	-13	-13	-19	-18
	SE	-51	06-92	-19	23	12-94	-36	-36	-32	-21	-20	-24	-16	-19	-19	-10	-11	-8
	UK	-50	03-91	-21	2	06-97	-26	-20	-10	-15	-14	-10	-7	-11	-8	-3	-5	-11
SELLING-PRICE EXPECTATIONS	EU	-12	01-99	5	26	02-95	-1	1	1	2	2	3	7	7	7	7	8	8
	Euro area	-10	01-99	5	25	02-95	0	0	0	2	1	2	6	5	6	5	8	8
	BE	-18	02-96	2	26	12-94	-1	-1	2	4	7	10	11	10	6	14	16	
	CZ	-6	12-98	22	71	03-95	12	8	12	18	19	18	23	24	21	16	13	20
	DK	-12	11-01	-1	11	11-00	3	1	-5	5	3	7	2	9	8	3	1	4
	DE	-8	12-93	6	23	02-95	0	2	2	2	0	4	7	7	7	8	9	9
	EE	-28	03-99	15	86	04-92	11	9	9	11	12	21	31	26	26	19	21	20
	EL	-4	01-99	18	41	10-90	14	21	21	13	12	11	14	14	12	12	11	.
	ES	-18	04-93	3	35	04-95	0	0	1	3	4	2	2	3	4	3	4	5
	FR	-26	01-99	0	24	02-90	-4	-8	-8	-2	-6	-8	1	0	-4	-2	1	0
	IE	-25	11-92	-3	29	11-03	29	10	9	2	-9	-4	6	1	4	5	11	-2
	IT	-9	12-96	11	38	03-95	2	7	6	9	11	11	10	8	11	9	13	13
	CY	-12	10-01	6	36	10-03	6	14	2	20	11	9	21	23	7	9	5	-5
	LV	-17	12-98	16	50	07-94	6	14	17	21	24	29	28	23	21	18	18	24
	LT	-20	01-00	16	75	11-93	-3	-5	-2	5	3	7	13	2	9	6	-2	-4
	LU	-50	08-91	-3	53	12-94	-13	4	-18	-3	7	9	18	5	13	17	11	26
	HU	16	04-03	31	51	07-00	24	23	28	26	29	36	28	31	31	28	29	31
	NL	-7	01-99	4	20	12-94	3	6	3	7	7	9	8	9	12	6	8	13
	AT	-23	03-96	-1	17	03-90	1	0	4	0	6	4	5	4	5	3	8	11
	PL	-6	06-02	15	46	01-93	8	15	15	11	14	25	26	26	20	17	13	12
	PT^(c)	-9	05-03	9	29	10-90	1	-1	3	1	3	3	0	-1	3	4	4	2
	SI	-24	04-99	-8	5	01-01	-9	-7	-9	-8	-8	-3	-2	-2	-2	-1	3	4
	SK	-33	03-01	32	81	04-95	24	11	9	0	25	38	35	19	26	20	9	16
	FI	-34	03-96	2	49	08-94	-7	-12	-11	-8	-9	0	-5	9	4	13	13	5
	SE	-20	11-96	5	37	12-94	-3	-1	4	-2	11	8	18	21	15	22	16	17
	UK	-30	01-99	-1	29	02-95	-10	0	-3	-2	-3	-2	2	7	12	9	3	

(a) The indicator is the arithmetic average of the balances (%) of the questions on production expectations, order-books and stocks (the last with inverted sign).

(b) Highest figure is considered as minimum, lowest figure is considered as maximum.

(c) The Portuguese series was revised for the period Jan. 2003 to Jan. 2004 due to a sample change.

TABLE 2b: Quarterly survey of manufacturing industry

Capacity utilisation in manufacturing industry (%) (s.a.) ^(a)													
	Since 01/1990					2003				2004			
	Min.		Ave.	Max.		I	II	III	IV	I	II	III	IV
	Value	Date	Value	Date									
EU^(d)	77.9	III-93	81.9	85.5	II-90	80.8	80.5	80.2	80.7	80.5	80.7	81.9	81.7
Euro area^(d)	77.5	III-93	82.2	85.8	IV-90	81.4	80.9	80.7	81.4	80.7	80.7	81.6	81.7
BE	74.5	III-93	80.0	84.8	I-01	79.3	78.6	77.9	79.0	79.4	79.6	81.5	80.9
CZ	70.9	IV-91	81.5	87.1	I-01	85.5	85.3	84.5	85.0	85.5	85.6	86.3	86.7
DK	76.4	II-93	81.8	86.1	III-98	81.4	80.6	80.5	79.8	81.5	81.9	83.0	82.8
DE	78.3	III-93	84.2	89.5	I-91	82.3	81.8	81.0	82.9	82.8	82.6	83.4	83.9
EE	52.2	IV-93	65.0	76.5	IV-02	73.6	74.2	73.1	73.8	73.0	75.5	74.3	74.8
EL	72.9	IV-97	76.4	79.3	II-01	75.8	77.1	76.8	76.1	77.5	74.6	76.3	:
ES	71.1	III-93	78.0	81.0	III-98	78.6	78.2	79.5	79.3	77.0	79.7	79.8	79.3
FR^(d)	81.4	I-04	82.1	83.2	III-04	:	:	:	:	81.4	81.8	83.2	82.6
IE	71.6	I-93	76.5	83.3	I-96	74.5	75.1	77.1	73.6	74.4	77.7	75.3	75.0
IT	74.3	IV-93	77.1	80.2	II-90	77.5	75.6	76.1	76.1	76.8	75.9	76.6	76.4
CY⁽ⁿ⁾	61.6	IV-02	70.7	75.9	IV-01	64.8	64.6	72.4	72.8	72.2	72.2	75.4	70.7
LV	44.6	II-93	59.1	74.9	I-04	72.2	68.2	66.7	72.4	74.9	72.7	72.7	69.1
LT	44.1	IV-95	54.7	69.1	III-04	64.7	68.4	65.7	68.8	68.2	68.4	69.1	68.7
LU	77.8	IV-96	83.7	89.2	I-01	84.1	85.9	84.8	83.9	83.5	85.6	87.4	86.0
HU	76.1	I-96	79.8	87.1	IV-00	78.8	79.6	79.9	79.2	81.6	80.3	82.2	80.0
NL	80.3	III-93	83.8	86.2	II-90	82.5	81.9	81.0	81.4	82.1	82.8	83.1	82.7
AT	79.1	IV-02	81.9	85.0	IV-00	79.7	80.4	79.4	80.3	80.0	80.4	82.3	82.4
PL	66.6	I-02	73.5	78.2	III-98	70.5	71.1	74.5	75.6	76.1	76.6	78.1	77.4
PT	72.6	IV-93	79.4	84.3	IV-03	77.5	77.6	76.4	84.3	80.6	79.3	81.4	80.2
SI	76.3	III-96	79.8	82.3	IV-03	81.2	80.5	79.6	82.3	81.9	81.6	81.7	81.2
SK	65.3	IV-03	78.6	87.1	II-01	81.3	76.5	73.6	65.3	78.6	71.3	74.4	84.2
FI	80.7	III-03	85.3	89.9	III-98	82.2	82.8	80.7	82.0	82.8	83.4	84.7	86.9
SE	82.2	III-01	84.9	88.5	IV-00	82.6	84.9	82.9	83.8	83.7	85.2	86.9	87.1
UK	77.4	I-93	81.1	85.4	II-95	78.4	78.9	77.9	77.5	78.7	79.7	82.7	81.0
Production capacity in manufacturing industry ^{(a)(b)(c)}													
	Since 01/1990					2003				2004			
	Min.		Ave.	Max.		I	II	III	IV	I	II	III	IV
	Value	Date	Value	Date									
EU	5	I-90	20	38	III-93	25	22	27	25	21	20	17	16
Euro area	2	I-90	18	38	III-93	20	22	25	25	20	19	17	15
BE	10	II-90	28	54	III-93	33	37	40	35	29	26	21	17
CZ	-6	II-00	8	28	III-99	13	11	9	8	7	7	2	0
DK	-5	I-98	16	33	II-93	28	23	25	26	19	16	6	9
DE	-6	IV-90	19	42	II-93	28	28	31	28	23	20	18	19
EE	-6	III-04	17	38	IV-96	7	0	6	-2	7	2	-6	3
EL	0	II-00	11	21	II-94	9	14	13	12	2	12	13	:
ES	-2	II-00	7	20	II-93	5	4	6	9	11	7	5	3
FR	-13	III-00	16	46	IV-93	14	14	20	22	14	15	14	8
IE	-4	III-00	12	29	III-93	18	20	22	27	19	18	23	15
IT	12	I-90	27	43	III-96	28	26	26	32	30	31	28	27
CY⁽ⁿ⁾	-12	III-01	2	21	IV-04	7	12	0	4	7	10	8	21
LV	-6	III-03	19	53	III-93	-1	0	-6	0	4	0	-1	0
LT	5	IV-02	29	68	IV-93	6	6	15	24	6	16	13	16
LU	-12	I-98	21	57	IV-96	33	37	23	33	40	25	3	-6
HU	-40	IV-03	22	44	III-03	38	44	44	-40	20	17	15	42
NL	-3	I-01	5	16	III-93	9	7	10	8	8	7	2	2
AT	0	III-00	14	22	III-03	19	20	22	17	17	16	13	11
PL	17	IV-04	34	56	III-92	34	32	27	19	20	31	23	17
PT	1	III-00	14	40	IV-93	16	26	23	21	21	18	18	19
SI	8	II-01	22	41	III-96	18	18	21	13	17	11	9	10
SK	-12	III-04	7	27	I-94	2	-4	3	1	2	0	-12	7
FI	-21	II-95	25	81	IV-91	34	40	44	33	29	29	20	7
SE	-19	III-00	7	30	IV-01	21	6	27	18	5	4	6	4
UK	10	II-95	32	55	III-91	44	36	41	41	33	32	25	27

TABLE 2b (continued) : Quarterly survey of manufacturing industry

Estimated number of months' production assured by orders on hand in manufacturing industry (s.a.)^(a)

	Since 01/1990					2003				2004			
	Min.		Ave.	Max.		I	II	III	IV	I	II	III	IV
	Value	Date		Value	Date								
EU^(d)	2.8	IV-93	3.2	3.6	II-90	3.3	3.5	3.2	3.3	3.3	3.3	3.4	3.3
Euro area^(d)	2.8	IV-93	3.1	3.6	II-90	3.2	3.4	3.2	3.2	3.2	3.2	3.3	3.1
BE	2.8	IV-03	3.2	4.2	III-90	2.9	2.9	2.8	2.8	2.9	3.1	3.1	3.2
CZ	7.3	III-03	13.9	22.6	II-01	10.9	12.2	7.3	9.8	9.8	10.6	8.0	10.2
DK	14	IV-04	19	2.5	III-90	1.5	14	14	1.5	16	14	16	14
DE	2.4	IV-93	2.8	3.3	I-91	2.8	2.8	2.7	2.8	2.7	2.6	2.7	2.6
EE	4.1	I-04	5.7	7.2	II-02	5.8	5.6	5.0	5.6	4.1	4.5	4.4	4.8
EL	4.5	III-04	5.6	6.6	III-90	5.1	5.3	5.1	5.2	6.2	4.7	4.5	:
ES	1.5	II-93	2.5	3.7	II-03	3.4	3.7	3.5	3.4	3.3	3.2	3.5	3.4
FR^(d)	2.5	IV-99	3.2	4.4	I-02	3.2	4.2	3.6	3.5	3.7	3.5	3.7	3.2
IE	1.6	IV-93	2.4	3.0	IV-04	2.3	2.8	2.6	2.7	3.0	2.9	3.0	3.0
IT	3.4	IV-04	4.1	4.9	II-00	4.5	3.8	3.8	3.9	3.7	3.8	3.9	3.4
CY⁽ⁿ⁾	2.7	III-01	3.6	4.7	IV-04	3.6	4.3	3.4	3.9	3.8	3.1	3.9	4.7
LV	3.0	II-04	3.5	4.1	I-01	3.1	3.0	3.4	3.5	3.1	3.0	3.3	3.5
LT	2.1	III-01	2.7	3.2	IV-04	2.7	2.8	3.2	3.0	3.0	2.7	2.9	3.2
LU	19	IV-93	2.6	3.3	III-04	3.2	2.9	2.7	2.8	2.9	3.1	3.3	3.2
HU	2.9	IV-02	4.0	5.1	IV-00	3.1	4.6	3.4	4.8	4.0	3.8	4.6	4.2
NL	2.1	I-95	2.6	3.3	I-91	2.6	2.6	2.6	2.6	2.6	2.7	2.7	2.8
AT	2.9	I-01	3.7	5.9	IV-01	3.8	3.7	3.7	3.5	3.8	4.1	4.2	3.6
PL	5.3	III-01	6.1	7.4	II-04	6.1	6.2	6.0	7.0	7.1	7.4	6.8	7.0
PT	2.7	III-03	3.8	6.4	II-04	3.6	3.0	2.7	3.1	3.3	6.4	4.6	5.0
SI	2.8	IV-98	4.3	5.0	IV-00	4.1	4.4	4.3	4.4	4.3	4.4	4.1	4.1
SK	5.3	I-04	7.8	9.5	I-01	6.7	6.7	8.6	6.0	5.3	5.7	6.4	6.9
FI	2.5	III-04	3.3	4.3	III-98	2.7	2.8	3.0	2.9	2.5	2.7	2.5	3.1
SE	18	IV-96	2.3	3.3	II-04	2.1	2.0	2.0	2.6	3.3	3.3	2.9	3.0
UK	2.4	I-95	3.1	3.8	I-99	2.8	3.6	3.0	3.1	3.1	2.8	3.6	3.3

New orders in manufacturing industry (s.a.)^{(a)(c)}

	Since 01/1990					2003				2004			
	Min.		Ave.	Max.		I	II	III	IV	I	II	III	IV
	Value	Date		Value	Date								
EU	-18	IV-92	1	22	I-95	-5	-10	-9	-1	9	15	13	7
Euro area	-20	II-93	1	20	I-95	-5	-9	-8	0	9	14	14	6
BE	-24	I-96	-4	20	IV-97	-17	-17	-14	0	-2	9	12	8
CZ	-10	IV-01	8	28	I-04	9	-1	7	24	28	1	19	24
DK	-23	I-99	6	37	III-94	-2	-14	-15	3	10	18	18	10
DE	-31	I-02	0	22	II-04	-11	-6	-9	6	12	22	16	5
EE	-14	IV-01	11	30	III-04	1	3	22	25	26	29	30	22
EL	-5	II-03	12	23	II-98	11	-5	13	8	8	12	3	:
ES	-8	III-93	5	14	I-04	3	13	8	6	14	11	10	5
FR	-45	III-93	-2	32	IV-00	-9	-18	-15	-11	3	11	14	10
IE	-18	I-03	3	28	III-95	-18	-17	-15	9	-1	12	-1	-8
IT	-22	III-96	6	28	I-95	10	-13	-1	-8	12	5	12	-1
CY⁽ⁿ⁾	-42	II-03	-17	-5	II-04	-28	-42	-18	-11	-9	-5	-16	-17
LV	7	IV-01	14	22	IV-03	16	12	19	22	20	21	9	15
LT	-10	II-02	7	22	II-04	13	2	-4	13	17	22	12	17
LU	-48	I-93	-7	32	I-00	-7	-1	-6	-3	-6	20	19	3
HU	-19	I-02	-1	23	III-00	-11	-13	-7	-11	-1	5	-3	-10
NL	-12	II-03	7	19	IV-99	3	-12	-6	2	7	9	12	3
AT	-30	II-96	1	28	II-00	0	-3	-3	8	14	13	12	17
PL	-17	III-02	13	45	I-98	-4	2	-9	11	9	20	7	6
PT	-37	III-93	-7	23	IV-94	-30	-30	-19	-19	-11	-15	3	-1
SI	-9	IV-01	4	17	IV-04	5	-5	0	10	7	15	11	17
SK	6	I-04	33	53	II-00	33	31	31	30	6	31	19	39
FI	-30	III-01	8	49	I-00	21	1	-11	19	9	28	24	35
SE	-37	I-91	4	48	II-00	-1	1	-13	2	14	31	26	18
UK	-46	III-91	-6	29	I-95	-14	-20	-17	-15	5	13	3	10

TABLE 2b (continued) : Quarterly survey of manufacturing industry

Export volume expectations in manufacturing industry (s.a.)^{(a) (c)}

	Since 01/1990					2003				2004			
	Min.		Ave.	Max.		I	II	III	IV	I	II	III	IV
	Value	Date		Value	Date								
EU	-12	IV-01	7	22	I-95	4	-1	0	9	12	15	12	14
Euro area	-10	III-93	6	21	I-95	5	-1	-1	9	11	16	13	15
BE	-26	I-96	-2	35	IV-97	-22	-19	-16	2	-1	12	14	12
CZ	0	IV-01	30	54	IV-97	13	25	16	28	15	15	28	39
DK	-2	II-01	12	24	IV-00	9	2	4	9	13	15	19	15
DE	-16	IV-92	4	17	IV-04	4	2	-1	11	10	16	14	17
EE	2	IV-01	17	38	III-00	23	16	23	19	20	15	12	19
EL	6	III-03	23	41	IV-97	17	20	6	22	15	25	17	:
ES	-8	II-93	4	12	II-00	1	0	9	-2	3	8	7	5
FR	-34	III-93	4	28	IV-97	7	-12	-7	6	15	20	15	21
IE	-33	IV-01	5	48	II-04	13	-12	-1	-6	8	48	-13	11
IT	-6	III-96	14	31	I-95	16	10	6	17	15	20	16	13
CY⁽ⁿ⁾	-11	IV-04	20	38	IV-02	18	22	12	22	23	6	0	-11
LV	-2	IV-98	14	24	IV-00	10	17	15	16	11	15	11	18
LT	-11	II-94	12	36	III-97	18	19	14	23	7	28	17	21
LU	-58	III-91	-7	41	II-00	11	-18	-1	-14	-5	18	8	0
HU	-2	IV-01	12	32	IV-00	2	3	3	9	15	16	12	11
NL	-11	III-03	8	22	III-00	-2	-2	-11	-1	4	12	7	7
AT	-8	IV-01	6	15	IV-03	5	3	3	15	10	8	8	10
PL	0	IV-01	15	25	III-04	24	18	12	18	21	22	25	22
PT	-24	III-93	7	30	IV-94	3	-5	4	11	0	-12	-1	-3
SI	3	IV-95	22	40	IV-04	22	20	27	26	31	27	30	40
SK	-15	I-04	36	75	I-96	27	60	40	53	-15	49	0	35
FI	-21	I-03	16	44	II-02	-21	-3	13	15	17	10	42	23
SE	-21	IV-01	19	49	I-04	15	19	0	26	49	27	32	37
UK	-34	IV-01	1	30	III-95	-9	-11	-3	1	5	2	-4	-3

(a) Data collected in January, April, July and October each year.

(b) Answers to the questions whether, taking into account the level of order-books or production, capacity is more than sufficient (+), sufficient (=) or less than sufficient (-). Thus, negative balances (capacity less than sufficient) indicate high levels of capacity utilisation, whereas positive balances (capacity more than sufficient) are associated with low levels of capacity utilisation.

(c) Balances: i.e., differences between the percentages of respondents giving positive and negative replies.

(d) This question was modified in the French industrial survey in the 1st quarter 2004, in order to bring it into line with the EU harmonised programme. The series prior to this date are therefore not published. In addition, due to the structural breaks in the series, the values from the 1st quarter 2004 onward are not seasonally adjusted.

(n) not seasonally adjusted.

TABLE 2c: Capacity utilisation by industrial branch ^(a) (s.a.)

Degree of capacity utilisation in %

		Since 01/1990						2003				2004			
		Min.		Ave.		Max.		I	II	III	IV	I	II	III	IV
		Value	Date	Value	Date	Value	Date								
CONSUMER GOODS ^(b)	EU	78.0	III-03	80.7	85.9	II-90	79.6	78.3	78	78.2	78.7	79.1	78.8	78.8	
	Euro area	77.4	IV-93	80.5	85.4	II-90	79.5	78.3	77.8	78.7	78.0	78.4	78	78.2	
INVESTMENT GOODS ^(b)	EU	75.8	IV-93	83.2	87.4	I-01	81.1	82	82	82.4	83.2	82.8	84.3	83.7	
	Euro area	75.7	IV-93	83.8	88.7	I-01	82.1	82.9	82.7	83.3	83.7	82.9	84.3	83.7	
INTERMEDIATE GOODS ^(b)	EU	77.5	I-93	82.1	85.9	I-90	80.6	80.4	79.8	81	79.8	81.2	81.9	82.6	
	Euro area	78.1	III-93	82.3	86.4	I-90	81.1	80.5	80.5	81.4	79.9	81.1	81.6	82.5	
FOOD AND BEVERAGES	EU	76.4	IV-04	79.2	82.7	II-91	80	78	77.9	79	78.9	77.9	78.8	76.4	
	Euro area	76.0	II-94	78.3	82	II-91	79.6	76.5	76.8	78.8	78.1	77.9	77.5	76.9	
TEXTILES	EU	75.3	II-04	80.1	84.3	I-90	77.7	78.3	77.1	76.6	77.6	75.3	75.5	76.5	
	Euro area	74.5	III-04	80	84.7	I-90	78	78.3	77.1	76.6	77.0	74.6	74.5	76.2	
WOOD AND WOOD PRODUCTS	EU	76.5	II-92	81.2	84.6	II-95	79.3	78	78	80.8	80.7	80.2	81.5	81.7	
	Euro area	76.5	II-92	81.2	84.8	IV-90	79.4	77.3	77.3	80.6	80.1	79.3	80.4	81	
PRINTING AND PUBLISHING	EU	77.3	III-03	81.3	85.6	III-90	79.4	79	77.3	78.4	80.8	81.3	80.8	81	
	Euro area	77.4	II-93	81.6	86.1	I-91	78.4	80.4	77.7	79.4	81.6	82.0	80.5	80.5	
NON-METALLIC MINERAL PRODUCTS	EU	76.2	III-93	80.1	84.2	II-90	78.5	78.4	79	79.8	76.7	79.4	80.9	81.8	
	Euro area	76.2	IV-93	80.3	85.2	II-90	78.7	77.5	78.5	79.7	77.1	78.3	80.5	81.7	
BASIC METALS	EU	73.7	IV-93	83	88	IV-97	86.3	84.8	84.1	83.6	83.3	85.1	85.7	87.1	
	Euro area	73.3	I-93	83.2	89.3	IV-00	87.4	85.3	84.9	83.7	82.6	85.1	85.9	87.8	
METAL PRODUCTS	EU	74.3	IV-93	80.1	85.4	I-90	77.9	77.4	77.5	78.9	79.1	78.3	80.1	80.3	
	Euro area	72.9	I-94	79.9	85.3	I-90	78.1	77.6	77.5	79	79.0	78.5	80.3	80.2	
MACHINERY AND EQUIPMENT	EU	77.0	IV-93	82.7	88.7	II-90	80.6	80	80.1	80.3	81.9	81.4	83.4	83.2	
	Euro area	76.1	IV-93	83.2	89.4	II-90	81.6	80.8	80.8	81.4	82.9	81.9	83.4	83.4	
MEDICAL AND OPTICAL INSTRUMENTS	EU	79.4	I-94	83.7	87.7	I-01	81.5	83.1	82.4	82.2	82.5	83.7	84.2	84.2	
	Euro area	80.0	II-93	84.2	89	I-01	81.9	83.9	82.9	82.7	82.6	83.3	84.5	84.3	
MOTOR VEH., TRAILERS AND SEMI-TRAILERS	EU	73.6	IV-93	86	90.9	II-90	86	86.4	84.8	86.9	86.3	85.8	87.9	86.3	
	Euro area	74.4	IV-93	87.2	92.9	I-01	87.9	88.2	87.3	88.1	85.9	85.5	87.2	85.7	

(a) Data collected in January, April, July and October each year.

(b) The three major groups do not cover all industrial sectors.

TABLE 2c: Export volume expectations by industrial branch ^(a) (s.a.)

Balances: i.e., differences between the percentages of respondents giving positive and negative replies

		Since 01/1990						2003				2004			
		Min.		Ave.		Max.		I	II	III	IV	I	II	III	IV
		Value	Date	Value	Date	Value	Date								
CONSUMER GOODS ^(b)	EU	-8	III-93	7	19	IV-00	1	1	-2	6	8	17	6	11	
	Euro area	-8	III-93	8	21	IV-00	4	-3	-1	6	8	17	6	13	
INVESTMENT GOODS ^(b)	EU	-20	IV-01	6	23	I-95	1	-2	-2	14	13	21	17	20	
	Euro area	-22	IV-92	7	26	II-98	5	1	1	16	12	23	22	24	
INTERMEDIATE GOODS ^(b)	EU	-17	IV-01	5	24	IV-94	1	-1	-1	9	10	13	10	12	
	Euro area	-16	IV-01	5	22	IV-94	2	-3	-4	10	10	15	10	10	
FOOD AND BEVERAGES	EU	-3	IV-98	9	20	I-95	9	3	2	4	6	14	6	5	
	Euro area	-2	II-93	9	22	I-95	9	6	0	4	6	15	5	9	
TEXTILES	EU	-25	IV-01	2	18	I-00	-4	-5	-10	9	3	3	-2	6	
	Euro area	-25	IV-01	3	21	I-00	1	-3	-7	10	2	3	-4	9	
WOOD AND WOOD PRODUCTS	EU	-11	IV-90	5	22	IV-94	-4	-4	0	2	5	17	14	1	
	Euro area	-11	II-96	3	19	IV-94	-2	-9	-2	2	2	14	16	5	
PRINTING AND PUBLISHING	EU	-12	III-94	0	13	IV-94	-6	-5	5	-4	-2	10	6	6	
	Euro area	-13	IV-93	2	18	I-91	-4	-6	2	-4	4	7	10	11	
NON-METALLIC MINERAL PRODUCTS	EU	-14	IV-01	4	20	IV-94	-3	-10	-1	9	-2	11	3	7	
	Euro area	-10	IV-98	4	18	IV-94	-2	-8	-3	13	-2	10	0	3	
BASIC METALS	EU	-26	IV-01	2	26	III-94	3	-3	-11	6	15	9	6	15	
	Euro area	-26	IV-01	1	24	III-94	0	-13	-17	4	13	7	4	10	
METAL PRODUCTS	EU	-14	IV-01	3	21	I-95	-1	-3	-1	5	7	12	5	11	
	Euro area	-16	I-93	3	19	I-95	-1	-4	-2	1	5	11	4	11	
MACHINERY AND EQUIPMENT	EU	-17	IV-01	5	25	I-95	0	-4	-2	12	15	17	17	23	
	Euro area	-14	I-91	5	25	I-95	2	-2	-3	10	13	17	16	21	
MEDICAL AND OPTICAL INSTRUMENTS	EU	-16	IV-01	12	29	I-00	6	13	5	17	16	19	17	18	
	Euro area	-19	III-93	11	31	IV-95	4	9	5	11	10	16	18	19	
MOTOR VEH., TRAILERS AND SEMI-TRAILERS	EU	-37	III-93	5	31	II-98	11	3	-3	8	14	24	18	17	
	Euro area	-41	III-93	5	39	II-98	5	6	0	14	13	30	32	29	

(a) Data collected in January, April, July and October each year.

(b) The three major groups do not cover all industrial sectors.

TABLE 3: Monthly survey of services (s.a.)^(a)

		Since 01/1990						2003		2004									
		Min.		Ave.		Max.		Nov.	Dec.	Jan.	Feb.	Mar.	Apr.	May	June	July	Aug.	Sep.	Oct.
		Value	Date	Value	Date	Value	Date												
SERVICES CONFIDENCE INDICATOR	EU	-8	03-03	18	32	06-00	10	12	11	12	11	13	14	12	13	14	14	15	
	Euro area	-7	03-03	18	34	08-98	11	11	10	11	11	11	13	10	12	11	12	11	
		BE	-8	03-03	13	33	03-98	8	2	7	8	9	12	10	12	18	8	15	17
		CZ ⁽ⁿ⁾	32	12-03	41	52	07-02	49	32	35	38	36	42	45	45	45	43	40	38
		DK	11	03-03	25	37	04-04	30	29	27	29	32	37	32	29	28	28	30	35
		DE	-23	12-02	26	52	03-99	15	14	16	15	15	14	17	11	12	13	12	11
		EE ⁽ⁿ⁾	8	12-03	25	43	05-04	20	8	9	20	25	37	43	31	26	20	14	13
		EL	-14	04-03	28	62	08-00	16	23	35	31	31	28	26	24	24	17	7	:
		ES	10	10-04	32	56	06-98	19	22	20	20	22	23	26	22	16	16	17	10
		FR	-22	06-93	2	25	06-90	0	1	4	4	3	4	3	4	7	6	6	8
		IE	-14	05-03	18	44	08-98	7	1	0	-4	4	-1	2	-7	8	4	-12	-4
		IT	-5	10-02	17	43	02-98	16	23	4	12	5	7	13	14	15	17	11	17
		CY ⁽ⁿ⁾	-16	02-03	3	25	10-04	11	9	0	10	7	16	14	11	8	8	22	25
		LV ⁽ⁿ⁾	2	12-03	11	19	06-03	5	2	12	9	9	13	17	13	12	12	12	6
		LT ⁽ⁿ⁾	5	12-03	18	40	04-03	10	5	14	9	19	30	23	15	14	14	23	19
		HU ⁽ⁿ⁾	-10	10-04	2	14	03-02	0	-1	-2	4	1	4	4	1	1	-3	-6	-10
		NL	3	06-03	18	35	03-99	7	4	6	5	8	6	7	4	5	8	10	8
		AT	0	01-02	16	30	03-98	15	14	12	13	16	16	16	15	16	19	17	19
		PL ⁽ⁿ⁾	-8	03-03	-1	6	08-04	0	0	-1	-7	-1	2	1	4	-4	6	2	3
		PT	-17	05-03	8	29	06-01	0	-9	-7	-1	7	10	6	3	5	5	4	4
	SI ⁽ⁿ⁾	21	09-04	26	34	10-02	22	22	25	23	26	29	26	27	21	25	21	23	
	SK ⁽ⁿ⁾	32	07-02	50	61	05-03	45	37	46	52	45	52	51	38	40	48	56	50	
	FI	-11	09-03	25	61	09-00	12	12	12	14	-3	8	-3	-1	18	16	23	31	
	SE	-24	03-03	15	46	02-01	5	13	10	11	14	17	24	29	27	26	29	36	
	UK	-20	12-02	15	37	11-97	0	10	15	14	11	16	17	16	16	19	27	25	
ASSESSMENT OF BUSINESS SITUATION	EU	-19	03-03	14	37	06-00	3	6	5	5	4	6	5	5	7	8	5	9	
	Euro area	-18	03-03	16	39	09-00	6	7	5	7	5	6	6	4	6	7	4	6	
		BE	-27	06-03	-3	28	01-98	-14	-22	-13	-11	-12	-10	-5	-3	3	-2	1	3
		CZ ⁽ⁿ⁾	54	10-04	61	76	07-02	68	54	65	65	60	60	65	63	54	54	54	54
	Component of the services confidence indicator	DK	4	05-03	22	42	04-00	20	16	17	17	23	32	25	22	19	19	25	30
		DE	-35	02-03	27	63	12-98	16	14	15	13	13	16	15	8	13	16	12	11
		EE ⁽ⁿ⁾	2	02-04	30	52	06-04	24	20	16	2	5	29	52	52	39	27	14	16
		EL	-42	04-03	10	58	09-00	22	20	39	35	35	39	29	29	21	15	7	:
		ES	4	10-04	32	67	04-00	11	12	14	13	15	16	16	14	10	11	9	4
		FR	-35	09-96	-2	29	06-00	-6	-7	-1	-1	0	0	-1	-2	0	0	1	4
		IE	-16	05-03	22	52	02-00	2	-2	-2	-7	-2	-3	-1	-10	2	2	-11	-1
		IT	-27	10-02	14	44	02-01	4	24	-8	14	-4	-9	-7	-1	0	-12	-17	-3
		CY ⁽ⁿ⁾	-37	03-03	-6	28	10-04	6	0	-7	2	-3	9	2	5	3	5	17	28
		LV ⁽ⁿ⁾	0	03-04	12	23	07-03	9	6	15	5	0	6	10	10	12	12	12	3
		LT ⁽ⁿ⁾	5	07-03	24	58	04-03	12	10	31	18	15	20	21	9	15	18	20	21
		HU ⁽ⁿ⁾	-17	05-03	2	16	08-02	1	2	-1	4	-5	-2	-1	-5	-4	-6	-12	-16
		NL	-26	07-93	12	70	12-00	9	3	12	8	8	3	5	8	1	14	8	8
		AT	-4	10-96	13	30	06-98	12	11	7	12	11	10	15	12	16	17	15	16
		PL ⁽ⁿ⁾	-12	02-04	3	9	12-03	9	9	0	-12	-5	0	-2	1	-2	5	3	3
		PT	-22	06-03	6	24	11-97	-10	-8	-19	-16	-7	-8	-2	-9	2	-1	-5	-7
SI ⁽ⁿ⁾		19	10-04	31	46	10-02	24	33	35	27	27	29	21	23	23	23	25	19	
SK ⁽ⁿ⁾		27	07-02	48	64	01-03	36	31	46	55	28	52	53	45	44	44	62	40	
FI		-46	03-03	18	79	05-98	-4	2	8	-4	-24	4	-22	-22	-21	7	-7	20	
SE		-60	01-02	4	40	12-00	7	22	20	21	22	23	22	28	26	20	25	34	
UK	-35	12-02	0	27	12-97	-20	-10	-5	-14	-7	-1	-5	0	1	5	7	16		
EVOLUTION OF DEMAND IN RECENT MONTHS	EU	-12	03-03	14	32	03-98	9	12	10	8	6	13	14	14	13	14	13	16	
	Euro area	-16	01-02	15	32	03-00	11	12	8	6	5	11	12	11	12	12	12	11	
		BE	-9	03-03	13	41	11-97	8	-2	11	15	10	20	5	7	23	1	9	
		CZ ⁽ⁿ⁾	14	10-02	29	38	08-04	37	29	38	30	15	27	33	36	38	38	30	29
	Component of the services confidence indicator	DK	8	04-03	23	40	04-04	32	31	34	34	37	40	33	32	30	29	30	39
		DE	-32	02-02	20	43	09-98	16	16	12	10	12	16	20	14	12	13	10	9
		EE ⁽ⁿ⁾	6	02-03	25	50	05-04	34	20	18	13	11	33	50	40	35	19	12	16
		EL	-9	04-03	35	71	06-01	13	21	33	27	27	21	20	21	18	11	3	:
		ES	-1	08-02	25	56	06-98	11	20	14	18	16	18	17	12	7	9	8	7
		FR	-33	03-97	5	36	01-90	3	5	4	3	1	4	4	8	11	10	9	10
		IE	-24	10-03	12	46	08-98	1	-7	-7	-12	-9	-10	-3	-12	5	1	-20	-10
		IT	-28	08-02	12	38	03-01	16	18	7	-7	-9	13	13	21	22	30	15	23
		CY ⁽ⁿ⁾	-32	03-03	-3	30	10-04	17	9	4	9	2	12	7	12	7	17	23	30
		LV ⁽ⁿ⁾	-10	03-02	7	20	06-03	3	2	13	4	-2	9	16	15	13	14	14	7
		LT ⁽ⁿ⁾	-9	02-03	17	40	04-03	15	15	30	5	11	29	25	15	16	13	24	18
		HU ⁽ⁿ⁾	-18	05-03	-1	13	12-02	6	-1	6	5	-3	0	2	-1	-1	-9	-12	-12
		NL	-49	03-01	9	50	06-98	-1	3	-8	-13	-11	-10	-8	-9	-9	-16	-15	-4
		AT	-16	01-02	16	35	03-98	19	17	14	13	17	17	15	17	14	20	19	21
		PL ⁽ⁿ⁾	-18	02-03	-6	6	08-04	-5	-6	-1	-7	-3	3	0	2	-4	6	1	3
		PT	-34	05-03	4	26	06-01	-10	-22	1	5	7	17	-1	5	5	6	4	9
SI ⁽ⁿ⁾		9	08-02	20	31	06-04	18	17	23	11	12	21	23	31	23	25	14	27	
SK ⁽ⁿ⁾		29	07-02	49	64	05-02	37	42	57	35	51	54	51	35	32	43	47	51	
FI		-20	09-03	27	83	04-01	17	25	2	29	-1	-1	3	-8	32	21	33	56	
SE		-19	10-01	16	53	01-01	1	2	-9	0	7	11	23	30	20	23	33	44	
UK	-19	07-03	16	43	01-97	-3	14	20	20	10	16	23	26						

TABLE 3: (continued) **Monthly survey of services (s.a.)^(a)**

		Since 01/1990						2003		2004									
		Min.		Ave.		Max.		Nov.	Dec.	Jan.	Feb.	Mar.	Apr.	May	June	July	Aug.	Sep.	Oct.
		Value	Date	Value	Date	Value	Date												
EVOLUTION OF DEMAND EXPECTED IN THE MONTHS AHEAD	EU	-1	11-01	24	37	06-98	17	17	19	22	23	19	22	17	18	20	23	19	
	Euro area	-6	11-01	24	38	05-00	16	15	18	21	22	16	20	15	16	17	20	17	
Component of the services confidence indicator	BE	-2	07-03	28	51	01-95	29	30	24	21	28	25	31	32	29	24	36	28	
	CZ⁽ⁿ⁾	2	01-04	34	51	05-02	42	44	2	20	33	38	41	35	33	36	35	32	
	DK	16	10-01	29	41	12-03	38	41	30	35	36	38	37	33	34	35	36	35	
	DE	-22	11-01	30	59	09-00	14	13	20	21	21	11	16	10	10	10	13	13	
	EE⁽ⁿ⁾	-17	12-03	18	60	04-03	1	-17	-6	44	59	49	27	0	4	15	15	6	
	EL	5	05-03	40	75	09-01	13	29	33	32	32	25	29	22	34	24	11	:	
	ES	19	10-04	39	59	06-98	35	34	32	30	34	34	44	39	31	28	33	19	
	FR	-17	09-93	4	32	03-01	4	4	9	10	8	8	6	5	9	7	7	10	
	IE	-7	05-03	20	45	08-98	18	12	9	8	23	9	10	1	16	8	-4	-1	
	IT	-6	09-00	25	57	06-01	27	27	14	30	27	17	33	23	22	33	35	32	
	CY⁽ⁿ⁾	-3	06-03	17	39	05-03	11	18	2	20	21	28	34	16	15	3	27	16	
	LV⁽ⁿ⁾	-5	12-02	14	35	02-02	2	-3	9	19	29	25	24	15	10	10	9	8	
	LT⁽ⁿ⁾	-18	01-04	11	42	04-04	4	-10	-18	3	30	42	23	20	11	12	25	19	
	HU⁽ⁿ⁾	-10	01-04	6	24	03-02	-7	-4	-10	4	11	13	12	8	7	5	5	-1	
	NL	-4	01-96	27	54	07-00	14	7	14	20	27	25	23	14	22	26	36	19	
	AT	-1	10-01	19	34	06-98	15	13	15	14	21	20	19	17	19	20	17	21	
	PL⁽ⁿ⁾	-10	03-03	-1	8	06-04	-3	-4	-2	-1	6	4	5	8	-7	7	3	3	
	PT	-16	09-03	15	40	06-01	20	3	-3	9	22	21	20	13	7	10	12	9	
	SI⁽ⁿ⁾	11	12-02	27	38	04-04	25	15	16	31	38	38	35	28	18	26	24	23	
	SK⁽ⁿ⁾	34	06-04	54	74	09-02	62	38	35	65	57	49	49	34	45	56	60	58	
	FI	-12	11-96	30	71	01-01	24	8	25	17	17	22	11	28	42	19	42	17	
	SE	-4	01-03	24	66	02-01	6	15	20	12	13	18	26	28	36	36	30	31	
	UK	-14	03-03	29	57	11-97	22	26	31	35	29	33	32	22	27	29	38	26	
EVOLUTION OF EMPLOYMENT IN RECENT MONTHS	EU	-10	03-03	11	26	03-99	-5	-4	-2	3	-1	-1	-2	-1	0	2	4	5	
	Euro area	-8	03-03	12	28	03-99	-4	-4	-3	3	-1	-1	-2	-1	-1	2	3	3	
	BE	-14	08-02	9	30	08-98	-2	-6	-4	-3	3	1	4	2	2	-9	2	-1	
	CZ⁽ⁿ⁾	-25	04-03	-9	21	11-02	-17	-18	-13	-16	-16	-23	-18	-10	-18	-24	-23	-21	
	DK	-2	04-03	8	21	05-00	6	6	7	6	9	14	15	11	8	12	12	14	
	DE	-19	12-02	16	44	03-99	-6	-11	-8	-6	-5	-6	-4	-5	-3	-1	-2	-3	
	EE⁽ⁿ⁾	-2	02-04	9	21	07-04	7	5	-2	-2	4	8	12	20	21	20	8	6	
	EL	-42	06-01	9	44	06-00	3	8	1	2	-2	10	12	12	23	19	14	:	
	ES	4	03-03	19	45	08-98	8	6	8	10	7	17	13	11	6	12	8	5	
	FR	-27	06-93	4	23	03-00	-6	-6	-3	5	5	-3	-9	-2	-4	2	8	9	
	IE	-16	10-04	3	25	02-98	-5	-9	-12	-14	-9	-9	-10	-4	-7	-6	-16	-16	
	IT	-13	05-03	7	25	05-00	-5	6	2	18	-3	5	-3	3	6	-1	4	8	
	CY⁽ⁿ⁾	-26	06-02	-6	4	08-03	-1	-2	-4	-2	-1	-1	2	-6	0	-8	0	1	
	LV⁽ⁿ⁾	-4	03-03	4	15	06-03	5	1	6	0	-1	7	9	8	11	10	8	4	
	LT⁽ⁿ⁾	-45	01-03	-12	20	08-04	-32	-34	-37	-40	-17	-19	-18	0	0	20	-2	6	
	HU⁽ⁿ⁾	-16	02-03	-6	3	07-04	-6	-13	-7	-11	-8	0	-1	1	3	-6	-6	-5	
	NL	-8	05-03	18	66	06-98	-4	-7	-2	-3	-4	1	1	-3	-1	2	0	-2	
	AT	-7	08-02	6	18	06-00	0	1	-2	-5	-3	3	3	5	0	10	8	8	
	PL⁽ⁿ⁾	-15	02-04	-10	-7	08-04	-7	-8	-12	-15	-12	-9	-10	-7	-10	-7	-12	-9	
	PT	-34	05-03	0	28	07-98	-20	-25	-19	-15	-15	-21	-19	-12	-4	-10	-13	-19	
	SI⁽ⁿ⁾	-10	02-04	3	16	08-04	-5	-10	-4	-10	-8	-3	7	9	10	16	4	5	
	SK⁽ⁿ⁾	-60	07-03	-35	0	05-02	-36	-53	-54	-42	-50	-46	-56	-52	-54	-50	-47	-52	
	FI	-26	04-97	31	91	11-97	2	8	9	48	10	3	20	13	-9	45	49	17	
	SE	-40	04-03	3	42	01-01	-20	-15	-29	-21	-26	-21	-15	-17	-4	-6	-6	-3	
	UK	-22	04-03	9	27	06-00	-5	-1	9	11	5	4	1	3	5	1	11	22	
EVOLUTION OF EMPLOYMENT EXPECTED IN THE MONTHS AHEAD	EU	-6	04-03	11	26	12-99	-2	1	2	4	2	4	5	6	5	5	5	5	
	Euro area	-5	04-03	9	25	04-00	-2	1	1	3	0	2	4	5	2	3	1	1	
	BE	-11	04-03	15	34	11-99	4	5	11	9	8	8	14	20	17	15	18	18	
	CZ⁽ⁿ⁾	-34	12-02	-20	-2	06-02	-23	-23	-26	-22	-20	-10	-17	-27	-18	-29	-27	-29	
	DK	4	04-03	11	18	06-00	14	13	10	12	14	16	11	13	15	13	16	12	
	DE	-13	05-03	-4	11	02-01	-4	-4	-4	-3	-4	-6	-1	-1	-4	-3	-5	-3	
	EE⁽ⁿ⁾	-5	08-02	13	30	05-04	15	13	13	20	26	28	30	22	13	5	12	15	
	EL	-33	06-01	12	47	06-99	6	17	5	3	3	13	23	13	21	14	7	:	
	ES	3	08-02	19	41	04-00	15	14	13	11	8	15	19	18	11	16	11	6	
	FR	-31	06-97	1	21	06-98	-7	4	7	2	1	-2	6	3	1	0	4	1	
	IE	-11	10-04	9	31	04-98	2	2	-6	-4	-1	-2	-2	-2	7	2	2	-11	
	IT	-8	04-03	12	34	06-00	2	0	2	13	-1	14	0	10	2	4	-2	2	
	CY⁽ⁿ⁾	-5	11-02	4	25	05-02	-3	-2	0	-2	1	9	3	2	2	2	3	-2	
	LV⁽ⁿ⁾	-2	12-03	7	16	05-04	3	-2	3	8	12	15	16	14	8	7	5	5	
	LT⁽ⁿ⁾	-42	12-02	-10	26	05-04	-29	-3	-17	-20	-16	0	26	8	1	10	14	24	
	HU⁽ⁿ⁾	-17	12-03	-1	12	05-04	-10	-17	-2	3	2	8	12	6	-2	-1	-4	-4	
	NL	-2	05-03	19	40	03-99	4	2	1	6	5	8	7	5	5	6	6	5	
	AT	-6	01-04	9	27	09-98	1	0	-6	7	4	8	8	8	9	12	11	7	
	PL⁽ⁿ⁾	-13	07-04	-9	-2	08-04	-10	-10	-8	-12	-7	-9	-4	-6	-13	-2	-7	-5	
	PT	-24	01-03	4	37	08-03	-8	-10	-11	-16	-11	-15	-15	-20	-2	-19	-22	-14	
	SI⁽ⁿ⁾	-11	10-03	5	24	05-02	-7	-7	-3	-1	1	8	12	13	10	21	3	7	
	SK⁽ⁿ⁾	-63	11-03	-44	-9	07-02	-63	-59	-60	-45	-52	-47	-58	-57	-53	-42	-52	-61	
	FI	-31	11-96	25	82	12-00	-7	-8	-16	4	4	-15	8	5	24	17	4	3	
	SE	-35	11-01	11	62	09-00	-11	-10	-15	-15	-11	-6	-8	6	5	-3	-7	8	
	UK	-17	03-03	18	33</														

TABLE 4a: Consumer opinion on economic and financial conditions (s.a.) ^{(a)(b)}

		Since 01/1990			2003		2004													
		Min.		Ave.	Max.		Nov.	Dec.	Jan.	Feb.	Mar.	Apr.	May	June	July	Aug.	Sep.	Oct.		
		Value	Date	Value	Date															
CONSUMER CONFIDENCE INDICATOR	EU	-27	07-93	-11	2	12-00	-13	-13	-13	-12	-12	-13	-12	-12	-12	-11	-11			
	Euro area	-29	08-93	-12	3	04-00	-15	-16	-15	-14	-14	-16	-14	-14	-14	-13	-14			
	BE	-27	08-93	-6	17	12-00	-5	-7	-5	-4	-3	-4	-6	-1	-4	-2	-2	-2		
	CZ	-36	03-98	-16	1	04-01	-19	-20	-21	-26	-24	-21	-15	-14	-10	-10	-12	-11		
	DK	-11	10-90	6	17	12-97	5	6	9	5	7	11	10	11	11	11	13	11		
	DE	-28	10-93	-11	6	08-00	-14	-15	-16	-13	-16	-17	-18	-15	-17	-18	-16	-18		
	EE	-56	04-93	-25	0	03-03	-13	-18	-12	-16	-16	-16	-21	-18	-14	-14	-11	-11		
	EL	-44	07-03	-30	-6	04-00	-37	-42	-34	-32	-19	-18	-22	-23	-27	-28	-26	-25		
	ES	-37	10-92	-11	6	03-00	-12	-11	-12	-12	-11	-8	-9	-11	-11	-11	-13	-12		
	FR ^(d)	-34	08-93	-18	4	01-01	-24	-24	-15	-16	-15	-15	-17	-18	-16	-14	-11	-11		
	IE	-31	03-93	-5	19	01-00	-8	-10	-8	-7	-5	-6	-5	-6	3	3	6	9		
	IT	-38	04-93	-13	2	06-01	-14	-15	-18	-21	-19	-18	-19	-19	-20	-20	-20	-18		
	CY	-44	07-04	-27	-14	06-01	-26	-30	-33	-36	-35	-34	-34	-41	-44	-41	-37	-35		
	LV	-45	03-93	-25	-7	09-01	-16	-14	-16	-18	-21	-19	-19	-16	-14	-13	-18	-19		
	LT	-33	05-01	-16	-2	10-04	-11	-12	-15	-14	-12	-13	-13	-8	-8	-8	-3	-2		
	LU ⁽ⁿ⁾	-5	11-02	4	14	02-02	-1	-2	1	3	2	-1	1	5	5	4	7	5		
	HU	-59	04-95	-29	0	08-02	-29	-29	-33	-33	-33	-32	-27	-25	-25	-26	-24	-24		
	NL	-20	07-93	4	31	04-00	-11	-10	-13	-6	-10	-8	-11	-6	-3	1	1	-3		
	AT	-16	04-96	-1	11	08-00	-2	-2	-3	-2	-2	-3	-5	-2	-1	-2	-3	-2		
	PL	-41	05-01	-33	-21	08-04	-36	-29	-31	-33	-32	-30	-25	-23	-26	-21	-24	-24		
	PT ^(e)	-48	03-03	-22	-1	07-91	-35	-36	-36	-37	-36	-38	-35	-31	-32	-32	-32	-34		
	SI	-29	06-99	-19	-9	10-04	-22	-23	-21	-26	-22	-22	-19	-19	-18	-16	-17	-9		
	SK	-50	08-99	-34	-22	07-04	-35	-34	-32	-35	-27	-26	-26	-22	-22	-23	-25	-25		
	FI	6	11-01	15	23	02-00	13	14	11	11	13	13	14	15	13	17	15	14		
	SE	-10	09-96	8	24	08-00	4	4	6	6	2	6	6	6	4	6	6	8		
	UK	-28	10-92	-9	7	04-98	-4	-3	-3	-2	-2	-2	-5	-6	-4	-5	-3	-2		
	FINANCIAL SITUATION OF HOUSEHOLDS OVER NEXT 12 MONTHS	EU	-10	12-93	-1	5	04-01	-2	-2	-3	-2	-1	-1	-2	-1	-2	-1	-1		
		Euro area	-11	08-93	-2	5	03-00	-4	-5	-5	-4	-4	-3	-4	-3	-4	-4	-3	-4	
BE		-9	12-93	2	13	08-00	6	6	5	6	6	7	5	7	5	6	5	8		
CZ		-32	02-98	-10	2	05-02	-14	-16	-17	-25	-23	-22	-17	-16	-7	-10	-13	-9		
DK		2	12-90	12	39	10-00	16	16	15	15	15	19	16	16	15	15	14	11		
DE		-15	02-94	-5	4	05-00	-5	-7	-9	-6	-8	-6	-8	-6	-8	-8	-7	-8		
Component of the consumer confidence indicator		EE	-38	06-93	-11	11	01-03	2	-1	-1	-6	-6	-7	-18	-10	-7	-6	-3	-2	
		EL	-31	08-92	-15	10	04-00	-22	-28	-18	-20	-6	-2	-8	-9	-11	-8	-8	-10	
		ES	-16	12-92	1	10	10-99	-1	0	0	-2	-1	0	0	-1	-1	-1	-2	-1	
		FR ^(d)	-12	12-95	-1	6	01-01	-4	-4	-3	-1	-1	0	-1	-1	-2	-1	1	0	
		IE	-13	02-93	1	16	01-00	-3	-4	-4	-3	0	-4	-1	-2	0	2	2	6	
		IT	-15	04-93	-1	7	07-01	-2	-3	-3	-5	-4	-3	-3	-4	-5	-4	-4	-4	
		CY	-36	07-04	-12	0	05-01	-11	-17	-18	-24	-25	-25	-24	-36	-36	-32	-27	-24	
		LV	-29	09-93	-8	10	08-02	3	2	0	-1	-7	-5	-5	-1	2	1	1	-2	
		LT	-10	10-01	-2	6	10-04	1	2	0	-1	1	0	-4	3	2	2	5	6	
		LU ⁽ⁿ⁾	2	11-03	6	12	06-02	2	3	3	5	3	4	4	4	6	5	5	5	
		HU	-63	04-95	-23	16	08-02	-18	-16	-23	-23	-26	-20	-17	-15	-14	-14	-12	-10	
		NL	-8	01-04	4	16	04-00	-6	-6	-8	-2	-3	-3	-1	-2	-2	1	-2	-5	
		AT	-18	04-96	-5	4	08-99	-8	-3	-7	-6	-3	-3	-5	-3	-3	-7	-4	-4	
		PL	-20	08-01	-12	-7	10-04	-17	-10	-11	-16	-14	-11	-12	-9	-13	-7	-7	-7	
		PT ^(e)	-26	02-03	-7	11	01-92	-15	-17	-17	-17	-16	-17	-15	-13	-13	-16	-15	-15	
		SI	-30	06-99	-11	-2	10-04	-15	-14	-14	-14	-12	-14	-8	-12	-12	-12	-10	-2	
		SK	-44	08-99	-27	-9	03-02	-34	-35	-35	-35	-29	-31	-31	-24	-24	-24	-24	-23	
		FI	-8	04-93	6	13	10-04	11	11	11	10	12	10	10	10	11	11	12	13	
		SE	-13	09-96	7	18	07-02	11	13	12	13	11	12	11	12	12	11	13	14	
		UK	-23	03-90	2	16	09-02	9	8	8	7	10	10	8	8	8	7	7	9	
		GENERAL ECONOMIC SITUATION OVER NEXT 12 MONTHS	EU	-32	03-93	-12	1	08-00	-15	-15	-13	-12	-13	-14	-15	-14	-14	-14	-12	-12
			Euro area	-35	03-93	-13	4	04-00	-16	-16	-14	-12	-13	-14	-16	-14	-14	-14	-12	-13
	BE		-46	07-93	-11	20	06-00	1	-2	0	4	5	2	-4	5	-2	4	3	-1	
	CZ		-40	12-97	-13	8	10-95	-18	-19	-20	-26	-25	-24	-14	-12	-8	-7	-11	-9	
	DK		-23	02-99	-2	23	07-01	-1	2	6	4	5	11	8	6	2	6	5	7	
	DE		-41	03-93	-16	6	02-99	-18	-17	-19	-16	-20	-21	-23	-18	-22	-24	-21	-23	
	Component of the consumer confidence indicator		EE	-38	05-93	-5	25	03-03	7	-4	4	-6	-6	-4	-8	-6	2	3	8	8
			EL	-37	12-03	-16	17	05-00	-30	-37	-26	-25	-6	-4	-8	-11	-15	-16	-9	-11
ES			-38	10-92	-5	11	11-98	-5	-4	-6	-4	-4	0	-2	-5	-2	-7	-6	-5	
FR ^(d)			-37	01-91	-17	5	01-01	-26	-25	-12	-13	-13	-19	-18	-17	-14	-11	-7	-11	
IE			-33	01-03	-2	22	01-00	-12	-15	-14	-13	-8	-9	-10	-9	2	0	6	11	
IT			-40	04-93	-8	13	02-95	-14	-14	-17	-17	-15	-17	-16	-18	-18	-16	-11	-11	
CY			-46	06-04	-20	-6	05-01	-16	-24	-30	-36	-31	-34	-33	-46	-45	-39	-33	-29	
LV			-27	06-95	-8	11	05-03	3	3	1	-2	-6	-2	-3	0	4	3	1	-2	
LT			-19	05-01	1	15	10-04	5	3	1	-1	0	-1	0	6	5	7	13	15	
LU ⁽ⁿ⁾			-27	02-03	-6	7	06-02	-9	-7	-3	2	-5	-11	-8	-1	0	-4	1	-1	
HU			-53	04-95	-15	19	08-02	-16	-18	-25	-24	-23	-20	-11	-9	-8	-12	-7	-8	
NL			-42	03-93	-8	26	03-00	-12	-17	-18	-6	-9	-8	-12	-7	0	0	-3	-6	
AT			-26	04-96	-6	8	11-99	-4	-5	-2	-1	1	-1	-4	-4	1	-5	-8	-6	
PL			-35	05-01	-25	-15	09-04	-32	-25	-31	-34	-33	-33	-23	-21	-25	-16	-15	-17	
PT ^(e)			-51	03-03	-15	12	01-92	-29	-28	-28	-28	-28	-32	-28	-24	-25	-23	-23	-27	
SI			-21	02-04	-10	7	10-04	-15	-15	-14	-21	-17	-15	-5	-9	-13	-9	-9	7	
SK			-50	09-99	-34	-19	08-04	-41	-39	-38	-38	-28	-28	-27	-20	-20	-19	-24	-21	
FI			-24	04-91	6	28	01-95	4	5	5	5	7	8	4	6	6	9	6	5	
SE			-30	09-96	1	20	03-00	-5	-2	1	1	-2	2	-2	-2	-3	2	1	3	
UK			-33	03-9																

TABLE 4a (continued) : Consumer opinion on economic and financial conditions (s.a.)^(a)

		Since 01/1990			2003		2004												
		Min.		Ave.	Max.		Nov.	Dec.	Jan.	Feb.	Mar.	Apr.	May	June	July	Aug.	Sep.	Oct.	
		Value	Date	Value	Date														
SAVINGS	EU	-15	08-93	-5	4	04-01	-5	-6	-5	-5	-5	-4	-5	-5	-5	-4	-4	-4	
OVER NEXT	Euro area	-14	08-93	-5	4	04-01	-8	-10	-9	-9	-9	-7	-9	-8	-9	-7	-7	-8	
12 MONTHS	BE	-2	12-93	13	31	06-98	11	8	11	11	11	13	13	16	12	12	16	15	
Component of the consumer confidence indicator	CZ	-16	09-99	-5	11	08-03	-3	-6	-4	-5	-7	-4	0	6	4	5	-1	-1	
	DK	-3	08-90	22	36	10-04	29	27	30	28	27	24	27	27	31	29	36	36	
	DE	-5	05-03	8	23	12-90	2	2	1	4	2	0	1	1	-2	2	2	1	
	EE	-69	12-93	-51	-11	08-01	-37	-40	-37	-36	-36	-41	-47	-43	-40	-41	-39	-40	
	EL	-57	07-03	-44	-23	01-00	-48	-52	-51	-46	-39	-42	-41	-37	-37	-37	-42	-36	
	ES	-34	01-90	-19	0	07-00	-30	-31	-30	-29	-30	-25	-25	-27	-31	-25	-29	-25	
	FR^(d)	-36	03-96	-23	-7	04-04	-21	-24	-17	-16	-12	-7	-14	-14	-11	-10	-9	-8	
	IE	-32	03-93	-2	28	02-02	14	8	14	15	12	13	14	14	10	16	18	19	21
	IT	-39	10-04	-15	2	03-91	-23	-30	-32	-38	-38	-37	-38	-38	-37	-38	-38	-39	
	CY	-55	06-02	-41	-14	06-01	-43	-43	-45	-42	-43	-39	-39	-46	-50	-47	-42	-47	
	LV	-90	03-96	-56	13	01-94	-51	-45	-48	-49	-53	-50	-52	-47	-50	-43	-59	-53	
	LT	-55	11-01	-48	-41	10-04	-43	-44	-49	-45	-45	-46	-49	-45	-42	-46	-41	-41	
	LU⁽ⁿ⁾	40	07-03	47	58	04-02	44	44	47	45	51	45	47	48	46	45	52	47	
	HU	-70	07-00	-54	-19	01-00	-43	-44	-49	-49	-49	-50	-50	-45	-47	-46	-45	-46	
	NL	26	07-90	39	55	10-99	28	32	30	32	29	30	28	30	32	32	32	29	
	AT	-11	11-00	32	55	03-02	37	27	24	30	23	26	28	31	27	30	30	30	
	PL	-69	09-03	-51	-24	09-01	-55	-49	-49	-50	-49	-48	-48	-47	-48	-45	-60	-53	
	PT^(e)	-50	10-04	-33	-14	01-92	-40	-43	-43	-46	-43	-47	-46	-47	-48	-48	-47	-50	
	SI	-52	06-99	-29	-14	06-03	-25	-29	-28	-27	-27	-27	-30	-27	-23	-20	-23	-24	
	SK	-70	08-01	-43	-29	08-00	-45	-46	-42	-49	-47	-45	-44	-41	-42	-35	-44	-46	
FI	19	01-96	36	53	09-04	52	53	46	47	50	45	53	53	46	53	53	48		
SE	11	06-98	29	46	06-00	28	28	32	32	27	30	32	30	28	27	29	31		
UK	-26	10-92	-7	15	09-04	11	14	13	14	13	15	12	8	12	12	15	14		
UNEMPLOYMENT	EU	-1	01-01	26	56	03-93	31	29	29	29	28	28	30	28	28	27	26	26	
OVER NEXT	Euro area	-3	01-01	28	60	08-93	33	31	31	30	30	31	33	31	30	30	28	29	
12 MONTHS	BE	-19	12-00	27	63	10-93	38	39	37	35	35	38	39	30	31	29	30	31	
Component of the consumer confidence indicator	CZ	4	05-01	37	64	04-99	39	39	42	48	39	32	30	32	30	28	23	24	
	DK	-19	11-97	8	38	12-92	26	21	14	27	19	10	10	5	5	7	5	10	
	DE	-3	01-01	30	58	11-93	36	36	38	34	38	40	41	37	37	40	36	41	
	EE	9	09-04	36	82	10-92	22	25	14	16	15	12	11	13	11	12	9	11	
	EL	24	04-00	44	62	12-98	47	49	42	38	26	25	30	34	43	50	43	42	
	ES	-7	04-00	18	67	01-93	11	8	10	11	7	6	10	12	10	11	15	15	
	FR^(d)	-14	01-01	31	64	03-03	44	43	29	33	33	32	36	38	35	32	29	26	
	IE	-29	12-99	16	58	04-92	29	30	29	28	24	24	24	23	5	8	4	2	
	IT	-2	06-01	27	70	04-93	16	12	20	22	17	18	18	19	20	18	20	16	
	CY	25	10-03	34	45	10-01	32	36	39	42	40	37	39	35	43	44	44	39	
	LV	11	08-04	29	54	01-93	17	16	18	19	19	20	17	14	13	11	15	19	
	LT	-13	10-04	15	47	05-01	7	7	10	8	2	3	0	-6	-5	-7	-10	-13	
	LU⁽ⁿ⁾	14	06-02	33	48	12-03	43	48	41	39	40	42	41	29	31	30	30	32	
	HU	-3	07-98	27	59	02-93	40	37	35	34	35	36	31	29	31	31	32	32	
	NL	-35	07-98	18	77	03-93	53	48	54	48	56	51	57	46	40	28	23	30	
	AT	-9	11-00	26	49	12-96	31	27	28	29	27	33	38	32	30	27	30	26	
	PL	15	09-04	43	65	05-01	40	31	31	33	31	27	16	15	19	15	15	19	
	PT^(e)	-10	10-97	31	73	10-93	57	55	56	55	56	56	52	41	40	41	42	44	
	SI	7	09-01	25	43	02-04	31	32	29	43	33	32	32	26	25	21	26	17	
	SK	-1	04-04	30	67	08-99	18	17	13	16	3	-1	1	2	3	12	9	9	
FI	-31	01-95	-2	42	07-91	17	15	18	20	16	12	12	11	13	4	13	11		
SE	-26	08-00	6	38	11-01	20	24	23	23	27	19	18	18	22	17	18	16		
UK	-11	04-98	21	53	12-92	24	21	21	21	20	22	21	20	20	21	21	19		
FINANCIAL	EU	-19	02-94	-10	-2	04-01	-13	-13	-14	-14	-13	-13	-13	-12	-13	-11	-12	-11	
SITUATION	Euro area	-20	02-03	-10	-1	08-90	-16	-16	-17	-17	-16	-15	-16	-15	-16	-14	-14	-13	
OF HOUSEHOLDS	BE	-16	12-93	-5	3	11-00	-8	-6	-8	-4	-6	-4	-3	-7	-4	-5	-7		
OVER LAST	CZ	-30	09-99	-15	4	05-96	-12	-15	-18	-21	-17	-20	-17	-19	-14	-16	-17	-17	
12 MONTHS	DK	-5	04-01	6	14	04-04	5	5	8	5	9	14	9	11	12	13	12	11	
DE	-31	12-02	-12	4	08-90	-16	-16	-17	-15	-16	-15	-18	-16	-19	-14	-12	-13		
EE	-54	05-93	-18	1	01-03	-6	-5	-3	-4	-6	-3	-7	-7	-8	-8	-8	-6		
EL	-43	01-93	-27	-6	04-00	-35	-37	-33	-32	-28	-26	-27	-27	-26	-26	-23	-25		
ES	-28	01-94	-8	4	04-00	-12	-8	-9	-10	-9	-7	-9	-9	-9	-10	-11	-8		
FR^(d)	-18	06-96	-9	-2	04-01	-11	-11	-12	-13	-12	-13	-11	-11	-11	-11	-12	-9		
IE	-25	03-93	-7	11	04-00	-13	-14	-11	-10	-7	-9	-7	-10	-5	-5	-6	-4		
IT	-29	02-04	-13	-1	06-90	-24	-25	-28	-29	-26	-26	-26	-24	-22	-23	-22	-20		
CY	-34	07-04	-15	-6	07-03	-9	-12	-17	-21	-22	-21	-22	-21	-22	-31	-28	-27	-25	
LV	-57	01-93	-24	-3	08-02	-4	-5	-8	-9	-11	-9	-10	-11	-7	-8	-10	-10		
LT	-29	06-01	-16	-1	10-04	-10	-11	-11	-10	-8	-7	-8	-8	-7	-7	-7	-1		
LU⁽ⁿ⁾	-1	11-03	2	9	01-02	-1	-1	2	-1	2	1	0	-1	0	0	-1	0		
HU	-65	11-95	-37	0	10-02	-22	-23	-26	-30	-33	-29	-26	-26	-28	-27	-27	-28		
NL	-23	11-03	2	17	04-00	-23	-19	-20	-19	-20	-21	-17	-15	-16	-16	-20	-19		
AT	-23	11-02	-13	-2	08-99	-20	-19	-22	-19	-19	-17	-19	-22	-20	-18	-20	-18		
PL	-34	08-01	-27	-16	08-04	-30	-24	-22	-25	-22	-20	-20	-21	-23	-16	-21	-19		
PT^(e)	-29	10-03	-12	3	01-92	-25	-25	-25	-24	-22	-22	-21	-20	-19	-20	-19	-19		
SI	-36	06-99	-27	-18	05-99	-25	-26	-27	-25	-26	-28	-22	-25	-27	-25	-22	-24		
SK	-43	10-99	-30	-19	03-02	-34	-32	-34	-38	-35	-34	-30	-27	-29	-29	-30	-28		

TABLE 4a (continued) : Consumer opinion on economic and financial conditions (s.a.)^(a)

		Since 01/1990			2003		2004												
		Min.		Ave.	Max.		Nov.	Dec.	Jan.	Feb.	Mar.	Apr.	May	June	July	Aug.	Sep.	Oct.	
		Value	Date	Value	Date														
GENERAL ECONOMIC SITUATION OVER LAST 12 MONTHS	EU	-55	03-93	-27	-4	05-00	-39	-38	-39	-36	-35	-34	-35	-34	-32	-31	-31	-30	
	Euro area	-58	07-93	-28	-2	05-00	-44	-43	-44	-41	-40	-39	-40	-38	-37	-35	-34	-34	
		BE	-61	08-93	-25	22	12-00	-35	-33	-32	-26	-21	-23	-24	-18	-23	-15	-19	-21
		CZ	-54	12-97	-22	3	10-95	-23	-24	-27	-33	-29	-28	-24	-23	-27	-20	-23	-22
		DK	-25	04-93	-1	22	09-95	-6	-11	-5	-6	-4	5	9	7	9	8	9	9
		DE	-60	05-03	-27	12	07-90	-47	-44	-46	-42	-43	-44	-44	-40	-42	-40	-39	-40
		EE	-72	10-92	-13	20	01-03	7	1	13	7	9	12	9	1	3	4	6	8
		EL	-50	05-90	-31	6	05-00	-41	-45	-39	-36	-28	-29	-32	-32	-30	-26	-22	-25
		ES	-60	01-94	-16	13	03-00	-18	-14	-16	-13	-15	-12	-13	-16	-15	-18	-16	-16
		FR^(d)	-57	10-96	-35	-1	01-01	-50	-51	-42	-41	-43	-39	-44	-44	-40	-38	-36	-34
		IE	-59	03-93	-5	42	08-99	-33	-38	-29	-25	-22	-20	-20	-19	-3	-8	-1	2
		IT	-74	04-93	-38	-8	05-90	-49	-49	-59	-60	-54	-53	-53	-51	-51	-48	-46	-44
		CY	-41	07-04	-24	-12	09-03	-15	-23	-30	-36	-31	-33	-32	-37	-41	-34	-31	-35
		LV	-59	01-93	-26	3	05-03	-1	2	0	0	-1	-1	-4	-4	-3	-2	-11	-12
		LT	-41	05-01	-14	5	10-04	-2	-2	-2	-3	-2	-1	-1	0	1	0	3	5
		LU⁽ⁿ⁾	-36	12-03	-24	-5	06-02	-32	-36	-32	-27	-29	-33	-27	-23	-21	-22	-22	-17
		HU	-71	04-95	-33	6	09-02	-28	-31	-38	-37	-39	-36	-28	-25	-24	-26	-25	-26
		NL	-73	03-03	-12	45	03-00	-62	-63	-66	-54	-52	-51	-50	-45	-40	-39	-36	-40
		AT	-50	02-97	-23	8	07-00	-34	-35	-33	-28	-27	-29	-31	-29	-25	-27	-28	-24
		PL	-55	09-01	-45	-31	10-04	-46	-41	-45	-47	-44	-43	-38	-37	-37	-32	-34	-31
		PT^(e)	-60	02-03	-23	13	01-92	-56	-55	-55	-53	-51	-50	-49	-46	-43	-43	-42	-43
		SI	-39	09-98	-29	-19	10-04	-32	-34	-32	-37	-32	-34	-21	-26	-29	-26	-26	-19
		SK	-69	10-99	-45	-29	08-04	-47	-45	-46	-46	-41	-36	-33	-31	-31	-29	-33	-31
		FI	-65	01-92	-4	30	08-98	-4	-4	-3	-3	1	4	1	2	3	7	4	5
		SE	-25	05-03	-6	25	03-00	-20	-20	-14	-11	-13	-10	-11	-10	-9	-5	-8	-4
		UK	-67	11-92	-25	5	10-97	-23	-21	-23	-18	-18	-17	-19	-22	-17	-21	-21	-22
	SAVINGS AT PRESENT ^(c)	EU	:	:	:	:	:	:	:	:	:	:	:	:	:	:	:	:	
Euro area		:	:	:	:	:	:	:	:	:	:	:	:	:	:	:	:		
		BE	-45	12-03	47	70	02-01	-40	-45	-38	-44	-41	-37	-22	-18	-20	-20	-21	-22
		CZ	-35	01-03	-15	15	03-01	-14	-11	-22	-23	-20	-20	-15	-15	-13	-16	-16	-17
		DK	51	01-90	65	78	07-92	73	73	67	63	69	66	69	71	68	67	72	74
		DE	28	11-92	45	61	09-02	43	45	42	47	46	46	46	48	47	41	44	43
		EE	-58	09-96	-38	-14	08-01	-32	-36	-31	-32	-32	-32	-36	-36	-28	-35	-24	-29
		EL	-63	10-01	-45	-18	01-00	-57	-61	-61	-59	-53	-58	-56	-53	-56	-61	-54	
		ES	-33	12-03	31	58	08-96	-19	-33	-24	-21	-26	-21	-21	-25	-29	-24	-29	-24
		FR^(d)	12	10-04	44	61	06-95	45	41	18	16	19	12	13	13	13	12	12	
		IE	-2	03-93	20	56	12-01	25	16	26	28	23	23	21	20	22	25	31	28
		IT	26	06-04	45	59	06-96	36	37	35	34	36	30	28	26	29	34	42	35
		CY	-38	07-04	-14	9	09-01	-25	-28	-31	-25	-30	-34	-23	-33	-38	-18	-22	-26
		LV	-78	12-95	-58	-29	09-01	-50	-46	-49	-50	-52	-52	-51	-50	-50	-47	-58	-51
		LT	-48	05-01	-37	-28	05-02	-37	-35	-39	-39	-41	-40	-45	-39	-35	-39	-35	-34
		LU⁽ⁿ⁾	42	08-03	53	62	01-03	54	52	50	46	54	56	55	57	53	52	58	56
		HU	-83	11-95	-66	-28	12-00	-49	-59	-55	-52	-54	-54	-53	-47	-53	-52	-51	-52
		NL	47	06-91	61	70	09-96	63	66	63	67	65	62	65	64	66	68	65	64
		AT	17	01-97	40	64	09-02	51	56	50	55	50	51	54	55	54	56	55	55
		PL	-49	09-01	-38	-29	06-01	-33	-39	-35	-35	-32	-34	-37	-33	-35	-35	-36	-40
		PT^(e)	-62	10-04	-38	-13	01-92	-50	-54	-55	-56	-57	-59	-59	-58	-56	-60	-58	-62
		SI	-25	09-97	-13	-1	08-04	-20	-20	-17	-15	-11	-10	-2	-7	-2	-1	-6	-6
		SK	-55	10-04	-46	-36	03-00	-50	-51	-50	-53	-51	-49	-50	-50	-51	-51	-53	-55
		FI	-23	04-94	3	22	10-92	13	10	11	9	12	13	13	13	11	11	13	14
		SE	-9	11-01	6	20	02-00	1	-4	-1	3	0	-2	-2	0	1	0	-1	0
		UK	-16	03-03	11	36	05-90	9	10	6	13	16	18	11	19	21	24	22	25
MAJOR PURCHASES OVER NEXT 12 MONTHS		EU	-21	07-93	-15	-10	03-00	-16	-17	-18	-18	-17	-19	-17	-18	-18	-18	-18	
	Euro area	-21	04-04	-17	-12	03-00	-17	-18	-20	-19	-19	-21	-19	-20	-20	-19	-19		
		BE	-29	10-96	-16	-6	10-03	-10	-15	-13	-10	-13	-10	-10	-11	-11	-14	-10	
		CZ	-36	01-01	-25	-7	05-02	-20	-16	-13	-10	-14	-20	-11	-24	-13	-17	-18	-15
		DK	-14	01-93	-7	1	10-04	-2	-8	-4	-2	-3	1	-1	-2	-2	-1	1	
		DE	-39	02-03	-26	-14	04-90	-30	-33	-37	-33	-32	-36	-32	-34	-35	-33	-33	-33
		EE	-64	10-92	-26	-5	04-03	-6	-12	-11	-13	-9	-10	-20	-17	-18	-22	-24	-16
		EL	-50	11-92	-22	5	06-03	-19	-29	-26	-26	-25	-30	-30	-33	-37	-33	-22	-24
		ES	-48	11-93	-24	-7	11-00	-21	-18	-18	-19	-21	-22	-21	-26	-20	-20	-25	-20
		FR^(d)	-6	04-04	0	1	04-03	-1	0	-4	-5	-4	-6	-3	-4	-5	-5	-5	-4
		IE	-20	05-93	-9	2	04-02	-5	-4	-5	-5	-5	-3	-6	-5	-4	-6	-6	-6
		IT	-23	03-95	-18	-11	03-00	-12	-15	-13	-12	-13	-14	-14	-13	-15	-13	-13	-14
		CY	-7	03-04	13	35	03-03	4	5	-3	5	-7	-4	-4	8	13	16	14	15
		LV	-84	03-96	-46	-2	05-02	-5	-5	-4	-4	-7	-6	-10	-9	-5	-4	-4	-4
		LT	-18	12-02	-11	-2	08-04	-10	-6	-7	-7	-6	-6	-6	-4	-2	-2	-3	-4
		LU⁽ⁿ⁾	-19	08-03	-12	-5	01-02	-15	-12	-13	-15	-13	-13	-12	-15	-14	-11	-16	-16
		HU	-69	06-95	-38	-7	08-02	-24	-23	-29	-30	-31	-28	-27	-26	-26	-27	-25	-25
		NL	-24	03-03	-13	-4	11-98	-21	-17	-22	-16	-18	-19	-17	-20	-15	-20	-17	-18
		AT	-26	11-03	-16	-4	11-00	-26	-23	-19	-23	-19	-20	-21	-22	-24	-19	-19	-22
		PL	-25	09-01	-8	1	09-04	-9	-7	-7	-5	-6	-5	-7	-3	-6	-5	1	-2
		PT^(e)	-23	12-96	-8	14	06-90	-8	-7	-7	-12	-13	-10	-12	-11	-12	-10	-11	-14
		SI	-18	03-02	-5	4	04-00	-10	-12	-14	-12	-5	-5	-3	-3	-4	-8	-8	-3
		SK	-41	08-01	-30	-20													

TABLE 4a (continued) : Consumer opinion on economic and financial conditions (s.a.)^(a)

		Since 01/1990						2003		2004									
		Min.		Ave.		Max.		Nov.	Dec.	Jan.	Feb.	Mar.	Apr.	May	June	July	Aug.	Sep.	Oct.
		Value	Date	Value	Date	Value	Date												
MAJOR PURCHASES AT PRESENT	EU	-22	12-95	-10	6	01-00	-15	-17	-15	-14	-14	-13	-16	-16	-16	-15	-16	-15	
	Euro area	-28	03-03	-14	6	03-99	-22	-25	-23	-21	-21	-21	-23	-22	-23	-22	-21	-21	
	BE	-40	06-97	-6	26	12-00	4	9	9	7	8	11	11	13	10	10	14	16	
	CZ	-33	05-95	-2	34	07-03	15	23	13	11	13	7	8	9	15	10	7	11	
	DK	-27	01-93	-7	9	09-97	1	1	-9	-6	-5	-9	-7	-9	0	0	-9	-3	
	DE	-31	11-02	-11	5	04-99	-16	-22	-23	-17	-17	-18	-21	-16	-22	-19	-18	-19	
	EE	0	04-01	12	48	04-04	37	41	46	45	46	48	29	26	27	24	26	30	
	EL	-67	01-03	-35	-10	01-01	-43	-46	-37	-37	-28	-37	-44	-46	-44	-49	-38	-41	
	ES	-64	06-93	-17	26	11-99	-20	-25	-18	-17	-16	-18	-20	-25	-29	-27	-28	-31	
	FR ^(d)	-39	12-95	-14	14	07-00	-16	-21	-12	-15	-11	-14	-15	-15	-10	-11	-12	-9	
	IE	-22	04-92	13	40	09-97	3	0	13	13	12	12	12	9	16	19	19	18	
	IT	-64	11-96	-32	-2	05-90	-54	-49	-55	-51	-52	-49	-49	-52	-50	-50	-50	-46	
	CY	-18	10-01	1	19	06-01	12	8	0	4	-2	4	6	-12	9	1	13	11	
	LV	-81	06-96	-46	9	09-01	1	-1	6	7	3	3	0	1	4	3	-6	-1	
	LT	-9	05-01	15	41	04-04	26	34	34	32	37	41	35	31	33	31	35	31	
	LU ⁽ⁿ⁾	-19	05-03	-10	1	08-04	-12	-15	-6	-4	-4	-12	-12	-18	-1	1	-1	-12	
	HU	-87	06-96	-58	-9	10-02	-16	-19	-22	-22	-23	-21	-22	-18	-17	-16	-17	-16	
	NL	-39	04-03	8	54	02-00	-31	-36	-29	-31	-35	-30	-33	-30	-26	-25	-25	-30	
	AT	-14	07-02	8	29	08-99	-5	-5	-7	-6	-5	-8	-7	-9	-8	-7	-9	-10	
	PL	-27	11-01	-11	3	03-04	3	-2	-3	0	3	-3	-13	-6	-8	-7	-12	-9	
PT ^(e)	-58	12-02	-31	-1	01-92	-44	-50	-48	-54	-54	-54	-53	-55	-57	-56	-57	-57		
SI	-50	04-97	-24	10	05-99	-17	-12	-11	-14	-16	-15	-10	-8	-7	-4	-1	-3		
SK	-25	02-04	-9	4	08-99	-16	-15	-19	-25	-20	-22	-20	-21	-23	-15	-20	-18		
FI	-27	04-90	16	39	08-03	29	30	33	34	30	33	29	32	30	30	28	23		
SE	1	11-95	17	33	04-04	14	13	17	20	24	33	26	28	20	20	24	25		
UK	-22	05-90	8	28	11-02	10	12	13	13	10	13	11	4	8	5	3	5		
PRICE TRENDS OVER NEXT 12 MONTHS	EU	6	04-04	24	49	01-91	8	7	9	10	8	6	12	13	11	12	10	10	
	Euro area	3	04-04	24	51	01-91	4	4	7	7	6	3	10	10	8	9	8	7	
	BE	-4	09-02	20	46	10-01	10	11	11	13	7	8	15	14	17	12	15	19	
	CZ	21	08-02	48	72	03-98	44	46	46	54	52	55	43	37	35	38	34	35	
	DK	-29	08-93	-11	28	08-02	7	3	-6	-4	-4	-9	-12	-8	-5	-5	-8	-2	
	DE	6	12-03	33	58	07-91	9	6	11	10	10	8	14	13	14	13	12	11	
	EE	23	04-93	48	88	05-04	62	68	70	76	82	85	88	71	58	51	51	41	
	EL	0	03-04	39	60	05-90	3	17	10	9	0	2	18	13	16	13	10	23	
	ES	-4	11-98	14	36	01-02	12	7	9	7	7	4	13	15	12	17	17	22	
	FR ^(d)	-13	08-97	11	54	01-91	11	11	16	17	13	7	18	19	13	10	8	4	
	IE	6	01-94	22	42	10-00	13	14	19	13	13	14	19	26	21	22	20	19	
	IT	-21	12-03	23	62	02-91	-21	-21	-20	-15	-18	-20	-20	-15	-14	-11	-17	-20	
	CY	28	09-03	49	69	09-02	35	39	42	49	41	46	42	51	42	42	43	44	
	LV	16	03-00	31	70	03-04	51	57	61	64	70	65	63	56	50	46	46	45	
	LT	14	02-03	40	77	05-04	38	45	50	59	60	73	77	67	66	62	57	53	
	LU ⁽ⁿ⁾	-5	06-03	12	30	03-03	6	10	11	7	11	8	15	11	9	16	16	21	
	HU	34	07-98	51	65	08-03	62	62	64	64	64	59	57	53	54	52	53	51	
	NL	-27	12-02	25	60	01-91	-24	-14	-15	-5	-6	-7	3	3	4	1	4	7	
	AT	-19	01-96	13	41	09-01	24	21	24	19	16	21	21	19	20	25	24	27	
	PL	17	05-03	35	56	05-04	31	40	44	47	52	55	56	49	48	39	36	34	
PT ^(e)	-9	08-97	32	56	03-03	32	36	36	38	34	36	40	30	30	34	36	40		
SI	19	10-04	44	62	06-00	31	29	32	20	21	21	22	31	27	24	19	19		
SK	34	08-01	54	78	11-02	61	64	56	55	52	51	61	47	47	45	41	40		
FI	-21	12-95	10	40	09-01	8	10	9	12	7	10	16	18	17	22	15	16		
SE	-10	03-99	13	33	04-03	29	26	20	21	19	12	22	19	19	18	20	19		
UK	10	03-04	27	57	09-90	17	14	10	13	10	11	16	19	15	20	18	14		
PRICE TRENDS OVER LAST 12 MONTHS	EU	-4	03-99	22	46	01-03	38	37	38	36	35	32	32	31	30	29	29	27	
	Euro area	-4	02-99	27	62	01-03	49	48	50	47	46	41	42	40	40	38	37	35	
	BE	-1	06-98	33	51	10-04	46	49	47	47	50	48	46	47	50	47	48	51	
	CZ	-33	08-03	28	63	03-98	-23	-21	-21	-19	-18	-21	-12	-13	-10	-9	-7	-3	
	DK	-51	09-93	-25	-1	03-90	-23	-24	-28	-24	-25	-30	-30	-29	-31	-31	-33	-29	
	DE	-2	03-99	32	74	08-02	37	36	37	32	32	28	29	28	29	25	27	25	
	EE	-1	04-03	32	52	09-96	25	30	31	30	35	35	39	43	46	49	49	44	
	EL	5	06-99	39	76	08-03	75	72	68	70	63	64	69	67	70	73	62	64	
	ES	-5	06-97	29	65	03-03	63	58	58	57	60	54	54	55	52	52	53	53	
	FR ^(d)	-23	01-99	11	54	01-04	47	48	54	52	51	46	47	46	50	46	42	39	
	IE	-3	07-97	29	66	01-03	55	56	62	53	50	46	41	48	40	46	45	46	
	IT	0	07-97	36	70	01-04	70	68	70	69	62	56	54	49	43	46	39	34	
	CY	21	05-01	39	62	10-04	39	50	52	62	54	44	49	45	53	62	60	62	
	LV	-31	09-96	21	53	10-04	13	20	28	34	41	39	46	44	43	46	50	53	
	LT	-17	10-03	4	28	08-04	-13	-14	-11	-2	-4	-2	5	19	24	28	26	27	
	LU ⁽ⁿ⁾	20	01-02	38	45	01-04	39	42	45	40	41	36	39	39	36	39	39	43	
	HU	9	12-02	42	71	06-95	22	25	31	32	36	32	32	28	30	28	29	27	
	NL	-3	04-90	28	89	12-02	62	60	60	48	42	41	37	34	33	34	33	27	
	AT	-48	02-96	3	46	01-03	38	36	39	44	41	41	44	36	36	36	36	35	
	PL	-6	05-03	15	48	10-04	7	7	10	13	14	19	26	32	45	46	48	48	
PT ^(e)	-8	10-97	37	61	10-90	46	46	47	48	47	49	50	44	39	42	43	44		
SI	23	09-04	44	65	10-02	47	42	39	34	31	31	29	37	32	29	23	24		
SK	27	10-02	46	69	10-99	43	42	42	45	44	41	34	38	39	39	43	37		
FI	-58	12-95	-16	3	04-02	-9	-6	-11	-9	-11	-9	-8	-9	-8	-10	-6	-6		
SE	-38	11-98	-25	-6	10-95	-20	-22	-25	-23	-26	-27	-24	-25	-28	-28	-26	-26		
UK	-15	11-01	11	49															

TABLE 4b: Quarterly survey of consumers

Intention to buy a car within the next 12 months (s.a.) ^{(a)(b)}													
	Since 01/1990					2003				2004		2002	
	Min.		Ave.	Max.		I	II	III	IV	I	II	III	IV
	Value	Date	Value	Date									
EU^(d)	-73	II-04	-55.0	-46	II-00	-59	-60	-70	-70	-73	-73	-71	-70
Euro area^(d)	-75	I-04	-56.0	-48	I-00	-61	-61	-72	-73	-75	-74	-73	-73
BE	-80	III-04	-56	-45	II-95	-59	-57	-76	-79	-78	-80	-80	-79
CZ	-79	II-04	-72	-66	I-03	-66	-69	-73	-69	-79	-79	-77	-77
DK	-79	I-90	-64	-43	I-97	-71	-70	-76	-74	-76	-68	-69	-71
DE	-78	II-04	-41	-28	II-90	-43	-42	-68	-71	-76	-78	-74	-75
EE	-85	IV-04	-70	-53	II-03	-53	-53	-76	-77	-79	-81	-82	-85
EL	-88	III-93	-65	-38	III-00	-53	-56	-60	-65	-67	-69	-70	-67
ES	-82	I-04	-67	-25	IV-99	-82	-76	-78	-79	-82	-76	-76	-73
FR^(e)	-83	II-97	-77	-70	II-90	-78	-79	-78	-79	-77	-79	-77	-72
IE	-60	III-93	-40	-21	IV-99	-45	-35	-41	-40	-38	-36	-31	-27
IT	-82	IV-04	-61	-47	IV-90	-66	-74	-80	-79	-82	-74	-80	-82
CY	-66	I-03	-55	-45	I-04	-66	-55	-57	-54	-45	-51	-49	-53
LV	-84	I-00	-70	-11	I-02	-70	-56	-53	-54	-61	-53	-53	-52
LT	-78	IV-04	-72	-65	III-01	-67	-71	-75	-71	-77	-76	-77	-78
LU^(a)	:	:	:	:	:	:	:	:	:	:	:	:	:
HU	-87	II-04	-68	-33	I-00	-73	-74	-83	-82	-86	-87	-84	-83
NL	-55	III-03	-44	-36	IV-99	-52	-53	-55	-52	-48	-51	-48	-48
AT	-80	I-04	-48	43	I-01	-66	-40	-56	-56	-80	-60	-61	-60
PL	-77	III-03	-75	-72	IV-01	-76	-76	-77	-76	-73	-73	-73	-75
PT^(f)	-84	II-04	-66	-56	III-98	-74	-74	-74	-82	-83	-84	-81	-81
SI	-77	I-04	-54	-44	I-01	-51	-55	-69	-74	-77	-72	-67	-69
SK	-85	IV-04	-79	-75	IV-02	-79	-78	-82	-83	-82	-85	-84	-85
FI	-62	IV-04	-44	-31	IV-02	-54	-60	-58	-55	-57	-57	-57	-62
SE	-58	I-04	-38	-27	I-00	-32	-31	-50	-50	-58	-57	-52	-54
UK	-71	III-93	-48	-8	II-00	-46	-55	-61	-57	-62	-67	-63	-60
Intention to purchase or build a home within the next 12 months (s.a.)^{(a)(b)}													
	Since 01/1990					2003				2004			
	Min.		Ave.	Max.		I	II	III	IV	I	II	III	IV
	Value	Date	Value	Date									
EU	-86	IV-04	-81	-70	II-00	-82	-84	-85	-86	-85	-86	-86	-86
Euro area	-88	IV-04	-83	-78	I-01	-85	-85	-87	-88	-88	-87	-87	-88
BE	-93	IV-03	-79	-67	II-95	-85	-89	-91	-93	-90	-91	-87	-90
CZ	-91	II-04	-87	-82	II-02	-88	-88	-89	-88	-89	-91	-89	-88
DK	-86	III-03	-76	-62	II-02	-76	-84	-86	-81	-83	-79	-79	-75
DE	-93	II-04	-83	-78	IV-99	-85	-86	-88	-90	-91	-93	-91	-91
EE	-89	IV-04	-34	11	IV-99	-72	-72	-84	-83	-86	-88	-88	-89
EL	-92	III-95	-82	-68	I-03	-68	-78	-81	-80	-82	-82	-82	-80
ES	-88	IV-03	-80	-71	IV-99	-83	-81	-86	-88	-86	-85	-86	-82
FR^(e)	-90	III-93	-87	-81	II-04	-85	-84	-83	-85	-84	-81	-84	-85
IE	-83	I-94	-79	-73	III-04	-76	-79	-77	-77	-77	-79	-73	-76
IT	-94	III-03	-85	-79	IV-90	-87	-90	-94	-92	-90	-88	-92	-92
CY	-80	I-03	-72	-65	I-04	-80	-74	-71	-67	-65	-69	-67	-74
LV	-95	I-03	-84	-15	I-02	-95	-78	-76	-80	-94	-76	-76	-70
LT	-91	I-04	-87	-82	I-03	-82	-85	-91	-89	-91	-90	-89	-90
LU^(a)	:	:	:	:	:	:	:	:	:	:	:	:	:
HU	-90	II-04	-75	-38	I-00	-82	-82	-87	-88	-90	-90	-89	-89
NL	-84	IV-03	-76	-68	III-99	-81	-82	-81	-84	-82	-79	-80	-83
AT	-99	I-04	-78	51	I-01	-99	-78	-83	-80	-99	-83	-85	-81
PL	-89	II-03	-86	-82	I-04	-89	-89	-87	-87	-82	-85	-87	-85
PT^(f)	-89	IV-04	-77	-70	II-90	-81	-83	-86	-87	-88	-89	-87	-89
SI	-89	IV-03	-77	-71	IV-96	-82	-77	-86	-89	-83	-83	-79	-82
SK	-90	IV-03	-86	-82	II-00	-86	-88	-86	-90	-87	-88	-89	-88
FI	-87	IV-03	-81	-76	III-02	-83	-87	-85	-87	-85	-84	-86	-85
SE	-78	IV-97	-71	-61	II-03	-61	-61	-72	-74	-73	-76	-74	-76
UK	-88	II-01	-75	-9	II-00	-69	-83	-75	-76	-75	-80	-80	-80

TABLE 4b (continued): Quarterly survey of consumers

Intention to carry out home improvements over the next 12 months (s.a.)^{(a)(b)}

	Since 01/1990					2003				2004				
	Min.		Ave.		Max.		I	II	III	IV	I	II	III	IV
	Value	Date	Value	Date	Value	Date								
EU^(d)	-66	I-97	-61	-51	II-00	-59	-60	-59	-57	-56	-55	-56	-54	
Euro area^(d)	-68	III-93	-62	-57	III-00	-64	-63	-64	-63	-62	-60	-61	-60	
BE	-65	III-97	-53	-32	III-01	-43	-37	-51	-50	-49	-50	-48	-48	
CZ	-52	III-01	-37	-26	III-03	-33	-33	-26	-33	-35	-33	-33	-35	
DK	-87	I-90	-67	-26	I-00	-80	-67	-56	-62	-64	-47	-60	-55	
DE	-60	I-97	-54	-45	I-90	-56	-55	-54	-51	-51	-51	-54	-51	
EE	-68	IV-92	-46	-16	IV-02	-18	-22	-25	-27	-27	-31	-39	-44	
EL	-83	III-95	-69	-44	IV-95	-71	-78	-79	-76	-72	-63	-64	-68	
ES	-82	II-94	-73	-61	I-91	-78	-81	-80	-80	-80	-80	-78	-74	
FR^(e)	-79	IV-95	-72	-56	II-04	-70	-67	-68	-70	-64	-56	-59	-59	
IE	-81	II-90	-68	-56	IV-04	-67	-74	-68	-59	-63	-61	-59	-56	
IT	-87	III-03	-69	-59	III-98	-70	-77	-87	-83	-84	-84	-85	-84	
CY	-71	IV-04	-57	-44	III-01	-67	-57	-56	-62	-54	-62	-62	-71	
LV	-77	IV-95	-60	-10	I-02	-54	-46	-41	-38	-46	-40	-44	-40	
LT	-66	IV-01	-61	-57	IV-03	-57	-61	-62	-57	-61	-59	-59	-62	
LU⁽ⁿ⁾	:	:	:	:	:	:	:	:	:	:	:	:	:	
HU	-73	II-04	-53	-23	III-00	-60	-61	-68	-68	-73	-73	-68	-72	
NL	-59	II-96	-48	-35	IV-00	-43	-43	-44	-47	-47	-42	-42	-47	
AT	-56	I-03	-39	3	I-01	-56	-45	-24	-22	-32	-23	-27	-28	
PL	:	:	:	:	:	:	:	:	:	:	:	:	:	
PT^(f)	-85	III-94	-59	50	III-92	-68	-70	-68	-73	-75	-75	-75	-75	
SI	-48	I-04	-29	-17	II-01	-37	-38	-41	-46	-48	-42	-34	-35	
SK	-63	III-04	-56	-48	IV-01	-61	-59	-59	-61	-57	-63	-63	-60	
FI	-72	III-98	-66	-55	I-00	-60	-66	-66	-64	-64	-66	-65	-60	
SE	-47	II-96	-32	-18	IV-04	-22	-23	-18	-21	-26	-27	-24	-18	
UK	-74	III-96	-55	-7	II-00	-44	-54	-40	-37	-34	-37	-38	-35	

(a) Data collected in January, April, July and October each year.

(b) Balances: i.e., differences between the percentages of respondents giving positive and negative replies.

TABLE 5: Monthly survey of retail trade (s.a.)^{(a)(b)}

		Since 01/1990						2003		2004									
		Min.		Ave.		Max.		Nov.	Dec.	Jan.	Feb.	Mar.	Apr.	May	June	July	Aug.	Sep.	Oct.
		Value	Date	Value	Date	Value	Date												
RETAIL TRADE	EU	-18	03-93	-7	4	06-00	-4	-7	-5	-5	-4	-3	-3	-4	-5	-3	-7	-4	
CONFIDENCE	Euro area	-21	03-93	-9	8	08-90	-7	-10	-8	-9	-8	-6	-7	-10	-9	-7	-9	-6	
INDICATOR	BE	-25	05-93	-6	12	04-90	-9	-13	-3	-9	-7	4	-1	-2	-5	-3	1	-1	
	CZ	-2	02-99	13	26	01-03	20	21	13	9	15	15	16	18	20	15	25	25	
	DK	-6	10-01	16	37	11-94	18	12	13	15	20	27	20	20	24	24	24	28	
	DE	-44	01-03	-18	21	02-91	-25	-22	-23	-21	-26	-21	-21	-28	-27	-23	-28	-22	
	EE⁽ⁿ⁾	-37	03-99	5	37	05-04	19	-1	1	22	27	34	37	30	22	23	21	22	
	EL	-24	06-95	1	26	03-04	23	19	19	16	26	23	20	17	15	16	18	:	
	ES	-36	02-93	-6	10	06-00	1	0	-2	-1	0	2	-5	-5	-6	-9	-10	-11	
	FR	-37	04-97	-16	7	10-04	-3	-11	-5	-3	-3	-4	-1	-3	-1	0	0	7	
	IE	-21	05-03	4	24	06-00	-9	-5	-7	-7	-12	-6	-3	-3	2	0	-3	1	
	IT	-19	10-96	8	39	10-95	14	8	9	1	9	12	5	6	11	15	9	6	
	CY⁽ⁿ⁾	-21	04-03	-7	4	01-04	1	-12	4	-3	-3	-7	-5	-5	-4	-5	-3	-2	
	LV	1	12-96	9	19	06-03	11	9	8	10	11	16	14	15	15	13	14	14	
	LT	-25	09-00	-6	26	06-04	3	2	-1	4	26	25	23	26	11	9	11	13	
	HU	-19	10-04	-6	9	02-98	-4	-10	-13	-9	-11	-7	-6	-9	-10	-12	-14	-19	
	NL	-16	12-03	13	29	10-99	-9	-16	-9	-7	-11	-10	-10	-10	-10	-6	-5	-3	
	AT	-29	03-03	-13	4	07-00	-11	-14	-14	-12	-7	-2	-5	-13	-12	-14	-8	-14	
	PL	-19	01-02	-6	7	07-98	-11	-11	-4	-7	-7	-6	-4	-4	-6	-9	-9	-9	
	P T^(c)	-27	01-03	-7	4	07-99	-3	-2	-8	-11	-13	-10	-7	-10	-6	-8	-5	-8	
	SI	3	01-01	10	23	04-99	12	11	13	13	11	12	14	13	11	13	10	12	
	SK	-17	11-94	8	34	11-98	12	12	-2	-7	7	11	14	13	10	-2	5	0	
	FI	-17	11-00	-5	10	05-04	1	-9	0	6	8	6	10	0	2	-3	-3	1	
	SE	-8	10-01	7	27	04-00	10	4	-1	4	6	5	4	5	0	6	1	0	
	UK	-27	09-92	-3	20	06-04	9	3	8	11	13	9	15	20	6	5	-3	4	
PRESENT BUSINESS SITUATION	EU	-25	12-94	-8	18	04-90	-2	-10	-5	-4	-5	-1	-2	-3	-3	-3	-7	-7	
	Euro area	-29	12-94	-10	21	11-90	-8	-17	-12	-11	-12	-7	-10	-14	-10	-10	-11	-13	
	BE	-41	10-95	-6	29	06-00	-3	-13	-3	-8	-8	9	-1	-5	-7	-5	-2	1	
	CZ	0	11-98	26	52	08-02	33	40	33	28	37	40	37	42	37	46	47	49	
Component of the retail confidence indicator	DK	-1	10-01	27	57	11-94	27	19	22	21	26	43	33	29	29	34	36	44	
	DE	-66	02-02	-20	46	11-90	-24	-28	-30	-26	-40	-20	-25	-34	-31	-35	-32	-38	
	EE⁽ⁿ⁾	-53	06-99	4	72	05-04	42	30	46	43	27	44	72	63	55	55	46	43	
	EL	-50	06-95	-9	40	01-04	31	30	40	31	32	29	35	22	21	24	27	:	
	ES	-72	07-93	-28	4	06-00	-21	-25	-18	-17	-24	-19	-34	-25	-26	-30	-33	-36	
	FR	-50	03-93	-14	11	10-94	-5	-28	-4	-1	1	-7	2	-4	5	6	7	9	
	IE	-30	05-03	7	37	06-98	-12	-7	-17	-7	-12	-9	0	-3	5	4	-11	-3	
	IT	-42	02-95	15	73	02-93	24	22	11	4	23	24	7	7	15	26	14	9	
	CY⁽ⁿ⁾	-66	04-03	-32	6	01-04	-36	-41	6	-20	-30	-34	-24	-24	-21	-25	-26	-15	
	LV	-18	08-96	3	32	07-03	12	12	20	8	5	19	24	24	22	24	20	20	
	LT	-37	03-00	-14	42	06-04	3	1	6	11	37	34	35	42	12	9	15	15	
	HU	-28	10-04	-5	16	03-98	1	-6	0	-6	-8	-4	2	-7	-11	-9	-16	-28	
	NL	-27	12-03	30	57	10-99	-13	-27	-11	-11	-20	-19	-14	-12	-10	-7	-5	-2	
	AT	-36	04-03	-11	13	07-00	-13	-22	-17	-15	-8	2	1	-17	-9	-16	-7	-18	
	PL	-36	01-01	-14	20	02-98	-22	-23	-3	-7	-16	-6	1	0	-5	-19	-20	-16	
	P T^(c)	-46	01-03	-20	3	07-99	-24	-20	-22	-32	-33	-33	-23	-31	-25	-29	-21	-27	
	SI	2	04-02	18	44	07-99	21	18	18	21	22	19	23	23	23	21	19	25	
	SK	-35	06-95	11	58	11-98	12	22	23	-5	-10	-1	24	14	12	-7	4	-9	
	FI	-15	11-00	7	40	05-04	22	2	12	23	36	31	40	20	24	9	4	13	
	SE	-21	10-96	8	34	07-00	25	18	9	11	13	14	6	13	8	12	3	1	
	UK	-57	09-92	-4	42	06-04	19	11	20	25	26	16	24	42	21	21	5	13	
VOLUME OF STOCKS	EU	11	05-93	16	22	03-02	16	16	16	14	15	16	15	16	16	13	16	14	
	Euro area	7	01-91	16	23	03-02	16	16	16	14	14	15	15	16	15	12	16	14	
	BE	-4	09-90	13	32	03-92	19	16	9	20	15	6	5	5	10	7	4	5	
	CZ	0	11-03	10	27	05-95	0	8	12	15	15	9	11	6	6	10	11	13	
Component of the retail confidence indicator	DK	-1	05-98	18	32	04-00	16	21	19	19	20	21	24	18	22	18	23	18	
	DE	4	02-91	26	43	02-02	32	29	28	20	19	26	26	29	26	17	27	17	
	EE⁽ⁿ⁾	-7	09-96	10	25	09-99	7	17	19	13	10	7	7	11	21	13	8	9	
	EL	-7	11-02	13	41	12-93	2	6	15	3	5	8	7	0	5	12	17	:	
	ES	-8	02-96	5	16	07-92	5	3	6	8	5	3	4	6	5	8	7	6	
	FR	-3	10-93	11	21	09-98	10	11	13	13	13	7	10	9	13	12	11	9	
	IE	-5	07-00	10	25	08-98	14	12	8	13	10	8	8	6	16	8	7	9	
	IT	-8	10-99	8	43	10-96	4	6	2	2	11	12	7	8	2	1	8	16	
	CY⁽ⁿ⁾	-17	02-03	-5	6	12-03	2	6	-7	-6	-15	-3	-1	-2	-7	-4	-8	-7	
	LV	-18	08-96	-4	8	12-02	-3	-3	-1	-4	-2	-1	-1	1	-1	-1	-3	0	
	LT	-21	12-99	-1	13	12-00	-1	-2	6	6	5	-2	6	2	-1	0	0	-2	
	HU	4	02-96	23	33	07-01	24	19	24	17	16	20	19	22	17	23	20	20	
	NL	5	07-99	11	17	07-04	13	16	15	14	13	14	17	16	17	16	15	14	
	AT	-2	01-00	25	36	01-96	21	20	24	25	21	21	23	27	25	18	24	24	
	PL	-8	11-03	-2	5	12-98	-8	-6	-4	-6	-4	-4	-5	-6	-3	-4	-2	-2	
	P T^(c)	-3	12-03	9	25	06-90	0	-3	6	6	8	3	7	2	3	4	2	8	
	SI	8	05-02	18	33	01-99	16	16	15	14	14	11	9	11	18	17	17	19	
	SK	-5	06-00	10	26	02-95	12	11	15	21	12	12	13	13	19	21	16	13	
	FI	22	09-04	29	40	08-00	28	29	28	25	31	35	30	30	29	28	22	24	
	SE	18	04-00	31	44	06-98	29	30	33	33	29	30	25	28	33	30	25	31	
	UK	4	04-93	18	33	02-91	18	17	18	14	18	18	12	16	19				

TABLE 5 (continued): Monthly survey of retail trade (s.a.)^{(a)(b)}

		Since 01/1990			2003		2004											
		Min.		Ave.	Max.		Nov.	Dec.	Jan.	Feb.	Mar.	Apr.	May	June	July	Aug.	Sep.	Oct.
		Value	Date	Value	Date	Value	Date	Value	Date	Value	Date	Value	Date	Value	Date	Value	Date	Value
EXPECTED	EU	-20	01-93	2	18	06-00	7	5	7	4	8	9	9	7	3	6	2	10
BUSINESS	Euro area	-26	02-93	-2	17	06-00	2	2	3	-1	1	4	3	0	-1	2	0	8
SITUATION	BE	-23	04-03	2	22	04-98	-4	-9	4	2	1	8	2	5	2	3	9	1
Component of the retail confidence indicator	CZ	2	09-00	23	46	02-02	27	32	19	13	22	15	22	17	28	9	40	38
	DK	7	10-01	40	71	07-94	43	39	37	43	53	60	50	48	54	56	59	57
	DE	-42	10-02	-7	26	12-90	-20	-10	-11	-16	-20	-18	-13	-20	-23	-16	-25	-12
	EE⁽ⁿ⁾	-41	03-99	22	64	03-04	20	-15	-24	36	64	63	47	39	32	28	25	31
	EL	-4	06-95	25	60	06-00	41	33	33	19	52	47	31	29	28	36	45	:
	ES	-34	02-93	14	34	04-91	29	27	17	22	28	29	22	17	14	12	11	8
	FR	-64	02-93	-25	20	10-04	6	6	3	5	4	2	4	3	4	5	5	20
	IE	-31	07-03	14	44	11-97	0	5	5	0	-15	-1	-1	-1	16	5	9	16
	IT	-20	03-93	17	59	06-96	21	9	19	0	16	23	14	20	19	20	22	25
	CY⁽ⁿ⁾	-20	06-02	8	40	11-03	40	12	-3	6	5	9	9	6	1	6	9	2
	LV	2	01-04	19	36	09-99	19	11	2	18	27	28	16	21	21	21	16	22
	LT	-35	09-00	-5	45	03-04	6	3	-2	8	45	39	41	39	21	17	18	23
	HU	-15	01-04	9	39	02-98	12	-4	-15	-4	-8	4	-1	1	-2	-4	-5	-9
	NL	-5	12-03	20	41	10-99	-1	-5	-1	3	1	2	2	-2	-4	6	6	8
	AT	-24	03-03	-3	15	07-00	2	-1	0	3	9	12	6	6	-1	0	1	1
	PL	-33	12-01	-7	17	07-98	-18	-16	-14	-19	-10	-17	-19	-18	-16	-13	-9	-14
	P T^(c)	-26	01-03	8	39	01-90	14	10	4	5	1	7	10	2	9	9	7	12
	SI	15	02-03	31	47	09-00	32	32	37	31	25	29	29	26	28	36	28	31
	SK	-14	11-94	22	60	12-96	37	26	-13	5	42	46	32	38	36	23	27	23
	FI	-4	06-03	9	39	05-97	9	0	16	21	20	23	21	11	10	9	10	15
SE	19	10-01	43	67	04-00	33	23	22	33	35	31	30	31	24	36	25	31	
UK	-25	10-98	13	40	01-97	25	14	22	21	30	30	32	33	15	14	5	14	
INTENTIONS	EU	-16	10-02	-2	13	01-90	-5	-3	-3	-3	-3	0	0	-2	-3	-1	-6	-3
OF PLACING	Euro area	-23	10-02	-5	15	01-90	-12	-7	-9	-8	-9	-7	-6	-8	-6	-4	-8	-7
ORDERS	BE	-27	05-93	-6	15	03-90	-14	-12	-5	-8	-10	-2	-6	-7	-8	-3	-4	
	CZ	-34	02-96	30	56	02-95	30	35	21	21	24	30	26	26	23	26	24	33
	DK	-12	10-01	18	58	07-94	23	16	14	17	24	25	19	21	20	21	23	28
	DE	-51	09-02	-14	21	02-91	-27	-19	-23	-30	-31	-29	-21	-27	-23	-17	-28	-27
	EE⁽ⁿ⁾	-46	03-99	13	57	06-98	0	-26	-11	34	54	47	33	24	23	11	12	11
	EL	-23	04-93	10	38	06-96	20	20	15	7	24	19	17	22	17	18	19	:
	ES	-31	02-93	5	21	01-90	11	11	5	8	11	14	16	13	9	2	-1	1
	FR	-37	01-93	-15	11	10-99	-13	-12	-6	-4	-7	-4	-9	-7	-6	-5	-6	4
	IE	-43	05-03	-4	27	08-00	-22	-18	-21	-11	-22	-13	-13	-8	-7	-11	-7	10
	IT	-24	10-97	21	69	04-92	8	22	9	28	21	21	13	18	22	27	22	13
	CY⁽ⁿ⁾	-46	06-02	-12	14	02-04	-13	0	-11	14	-2	8	-1	2	-17	-8	-2	-4
	LV	-4	12-96	8	27	03-02	7	2	0	9	13	11	7	11	12	13	9	12
	LT	-23	01-03	5	51	07-04	3	3	4	14	46	38	31	38	51	18	21	23
	HU	-23	01-97	0	22	05-98	1	0	-16	-11	-8	-1	-5	-8	-5	-9	-9	-20
	NL	-22	09-03	5	25	08-99	-18	-20	-19	-14	-13	-14	-13	-19	-13	-11	-10	-10
	AT	-42	03-99	-31	-16	06-00	-28	-28	-25	-25	-23	-22	-23	-27	-27	-26	-25	-26
	PL	-30	12-01	-6	13	12-98	-11	-9	-8	-14	-10	-11	-13	-10	-8	-6	-4	-11
	P T^(c)	-41	01-03	-13	12	11-98	-13	-11	-3	-13	-12	-7	-5	-14	-3	-15	-14	-6
	SI	-2	10-01	15	30	10-00	14	4	21	18	17	9	10	14	15	14	16	11
	SK	-19	03-96	34	78	01-02	47	29	2	38	44	41	48	37	42	31	36	40
	FI	-20	07-03	-8	11	04-04	-5	-12	-5	-5	7	11	5	-5	2	-4	-4	0
	SE	-17	10-01	15	52	03-00	4	1	3	6	5	5	10	10	2	12	8	4
	UK	-37	03-91	4	34	10-96	20	12	22	13	22	27	27	22	10	6	-1	15
EMPLOYMENT	EU	-13	12-92	-1	9	08-00	-6	-5	-2	-5	-4	-3	0	-2	0	2	-2	2
EXPECTATIONS	Euro area	-11	02-97	-1	10	08-00	-7	-5	0	-5	-4	-3	2	-2	1	3	0	3
	BE	-13	12-92	3	16	07-90	2	0	3	8	6	10	14	6	9	8	13	9
	CZ	-37	01-95	0	22	05-02	13	6	7	14	3	2	-1	1	3	12	8	7
	DK	-8	05-01	8	28	05-00	14	6	4	7	7	11	6	5	8	7	4	9
	DE^(d)	-32	01-03	-8	15	03-98	-18	-14	-9	-15	-13	-19	-7	-16	-11	-6	-13	-7
	EE⁽ⁿ⁾	-30	03-99	-5	15	06-94	2	-7	-5	11	13	12	11	12	2	-1	-2	2
	EL	-8	02-04	30	62	03-98	5	10	0	-8	3	3	-4	15	20	21	22	:
	ES	-19	09-93	0	8	06-04	3	5	5	2	1	3	3	8	2	1	0	-2
	FR	-14	06-92	-2	12	10-00	-1	-4	1	4	-3	-1	7	-1	-1	1	5	3
	IE	-17	05-03	3	22	03-98	-6	-2	-8	-3	-8	-6	-1	-7	-1	-3	-10	0
	IT	-34	02-97	10	54	02-00	-3	4	18	-2	11	22	15	17	28	29	14	32
	CY⁽ⁿ⁾	-6	07-02	0	2	01-03	1	0	-1	-1	0	1	1	1	0	1	0	0
	LV	-23	05-96	-1	13	07-03	2	0	6	10	9	6	7	6	9	10	10	9
	LT	-48	08-95	-17	54	07-04	9	0	8	15	48	48	48	54	54	22	25	27
	HU	-36	05-96	-9	5	11-03	5	-2	-8	-8	-6	-1	-8	-4	-5	-11	-9	-11
	NL	-6	05-04	3	13	01-00	-5	-4	-5	-4	-6	-3	-6	-3	-5	-4	-3	-4
	AT	-20	03-99	-5	71	01-96	-8	-7	-7	-6	-4	-5	-6	-6	-4	-4	-4	-5
	PL	-28	12-01	-12	2	07-97	-14	-15	-14	-14	-9	-12	-8	-11	-14	-11	-9	-10
	P T^(c)	-23	05-03	-4	13	09-97	-11	-19	-14	-15	-13	-13	-11	-12	-2	-11	-10	-12
	SI	-46	02-99	-10	11	06-04	4	2	7	6	5	-6	1	11	7	8	-2	0
	SK	-71	05-94	-8	31	09-02	-2	9	-17	-28	-2	2	3	0	-3	-18	-26	-6
	FI	-16	07-03	-3	10	05-04	-4	-8	-4	-4	5	8	10	6	4	-1	-4	1
	SE	-34	10-96	-3	23	06-00	-12	-14	-16	-13	-13	-11	-8	-11	-15	-12	-13	-9
	UK	-32	12-91	-1	25	10-97	-6	-6	-5	-3	-8	-5	-5	-2	0	0	-7	-2

(a) United Kingdom: refers to the volume of sales for the time of the year.

(b) The indicator is the arithmetic average of the balances

TABLE 6: Monthly survey of construction industry (s.a.)^(a)

		Since 01/1985												2003		2004					
		Min.		Ave.		Max.		Nov.	Dec.	Jan.	Feb.	Mar.	Apr.	May	June	July	Aug.	Sep.	Oct.		
		Value	Date	Value	Date	Value	Date														
CONSTRUCTION CONFIDENCE INDICATOR	EU	-42	10-93	-22	4	02-90	-18	-18	-17	-18	-17	-15	-15	-13	-14	-13	-13	-13			
	Euro area	-44	08-96	-21	4	03-90	-19	-19	-19	-20	-18	-17	-17	-15	-16	-15	-16	-14			
	BE	-35	11-95	-12	10	02-00	-13	-12	-12	-13	-10	-10	-8	-8	-9	-9	-5	-5			
	CZ	-64	06-99	-19	3	06-95	-10	-8	-4	-5	-8	-7	-1	2	-5	-6	-10	-10			
	DK	-38	12-91	-9	20	03-98	-14	-15	-16	-11	-10	-7	-4	-6	-6	-5	-2	-2			
	DE	-62	11-02	-36	3	01-91	-54	-52	-50	-51	-50	-49	-48	-48	-50	-53	-53	-54			
	EE⁽ⁿ⁾	-46	03-99	1	32	07-02	4	-1	1	3	9	16	27	27	22	21	20	12			
	EL	-51	09-94	-9	33	04-00	17	9	6	6	-1	-4	-6	-13	-24	-36	-46	:			
	ES	-57	10-92	-4	42	01-99	8	11	2	5	12	10	7	7	5	25	18	26			
	FR	-61	03-93	-18	34	10-00	-4	-1	3	-3	-4	5	5	3	1	3	6	6			
	IE	-54	09-02	9	58	06-97	5	18	22	2	9	26	17	30	36	39	36	33			
	IT	-68	10-93	-14	21	05-90	-1	-6	-7	-11	-2	-8	-5	10	13	3	3	2			
	CY⁽ⁿ⁾	1	09-04	17	41	07-04	41	39	4	7	17	8	23	15	41	25	1	7			
	LV	-64	07-93	-31	-2	05-04	-14	-17	-17	-9	-2	-3	-2	-5	-8	-9	-11	-4			
	LT	-76	09-00	-44	-8	10-02	-10	-24	-25	-22	-11	-17	-15	-17	-21	-22	-12	-11			
	LU	-74	03-94	-27	24	03-90	-27	-28	-31	-38	-42	-47	-44	-37	-30	-28	-35	-19			
	HU	-22	01-04	-7	12	09-98	-15	-16	-22	-18	-15	-11	-11	-6	-11	-8	-10	-16			
	NL	-25	06-03	-3	27	12-00	-23	-24	-19	-18	-22	-15	-17	-17	-16	-14	-12	-7			
	AT	-60	04-96	-31	-13	02-03	-31	-26	-24	-27	-25	-23	-24	-29	-25	-24	-25	-23			
	PL	-63	12-02	-45	-23	03-98	-53	-58	-48	-48	-47	-43	-42	-41	-37	-37	-38	-33			
	PT	-57	02-03	-26	-1	12-97	-43	-47	-40	-38	-56	-42	-43	-42	-45	-40	-41	-38			
	SI⁽ⁿ⁾	-28	05-02	-9	8	07-04	-12	-10	-6	-6	-11	5	-2	8	8	7	5	-2			
	SK	-86	07-99	-29	18	03-97	-19	-28	-30	-34	-31	-27	-23	-16	-18	-16	-14	-13			
	FI	-98	09-91	-19	48	06-98	3	-5	-3	7	5	-1	7	-2	-1	2	-1	0			
	SE	-83	12-93	-40	25	01-01	-57	-58	-56	-53	-52	-33	-28	-21	-9	-18	-6	-1			
	UK	-80	06-91	-21	5	08-04	-2	-3	1	3	1	1	2	4	4	5	3	-3			
	ORDER BOOKS	EU	-55	08-93	-30	-2	03-90	-26	-27	-26	-30	-26	-23	-21	-23	-23	-22	-21	-22		
	Euro area	-54	10-93	-29	-3	06-90	-26	-28	-27	-32	-26	-24	-22	-24	-25	-24	-22	-23			
Component of the construction confidence indicator	BE	-48	02-96	-23	2	02-00	-22	-21	-23	-24	-18	-18	-19	-18	-20	-19	-18	-14			
	CZ	-72	06-99	-24	9	12-02	-9	-5	-1	-15	-13	-10	0	5	-7	-8	-17	-20			
	DK	-49	12-91	-12	33	03-95	-20	-19	-19	-13	-13	-11	-7	-8	-8	-5	-3	-3			
	DE	-71	11-02	-45	-7	03-91	-62	-60	-62	-63	-60	-56	-57	-60	-63	-69	-63	-65			
	EE⁽ⁿ⁾	-63	06-99	-7	49	08-02	23	8	3	-3	-9	-1	12	20	20	21	26	25			
	EL	-77	06-95	-35	16	04-00	-8	-7	6	4	-9	-26	-9	-27	-18	-22	-27	:			
	ES	-64	08-93	-1	43	01-90	16	6	7	6	18	16	25	11	9	33	24	20			
	FR	-74	09-93	-25	37	10-00	-10	-7	-4	-13	-11	2	1	-2	-6	-4	1	2			
	IE	-61	06-94	3	68	06-97	-10	-5	0	-13	-12	4	1	20	11	20	16	9			
	IT	-84	02-94	-26	17	05-90	-17	-28	-22	-34	-21	-26	-24	-11	-5	-12	-9	-12			
	CY⁽ⁿ⁾	-5	06-02	10	51	12-03	22	51	4	8	28	6	18	12	33	19	0	6			
	LV	-84	01-96	-54	-19	05-04	-26	-28	-28	-29	-29	-24	-19	-20	-28	-23	-25	-21			
	LT	-96	09-00	-68	-22	09-04	-27	-36	-40	-48	-49	-40	-36	-35	-40	-41	-22	-27			
	LU	-73	08-93	-29	12	05-00	-42	-34	-37	-49	-45	-46	-47	-36	-34	-34	-35	-26			
	HU	-33	03-03	-16	3	03-99	-28	-29	-32	-30	-30	-23	-20	-16	-22	-17	-21	-28			
	NL	-30	09-93	-8	20	09-00	-24	-25	-25	-24	-24	-19	-19	-23	-19	-18	-17	-17			
	AT	-64	04-96	-42	-22	11-99	-39	-33	-39	-56	-44	-41	-38	-45	-38	-39	-40	-34			
	PL	-99	12-02	-69	-31	12-01	-80	-92	-79	-74	-74	-71	-70	-68	-66	-66	-66	-63			
	PT	-79	05-94	-43	-9	12-97	-58	-61	-59	-54	-75	-62	-66	-60	-64	-58	-63	-58			
	SI⁽ⁿ⁾	-47	05-02	-12	16	08-04	-8	-4	-15	-21	-33	-9	-14	3	4	16	9	13			
	SK	-93	03-94	-45	-4	03-97	-35	-33	-42	-43	-42	-41	-49	-38	-34	-33	-30	-27			
	FI	-99	12-93	-27	38	06-98	6	-10	-6	2	0	-3	19	-10	-5	-1	-6	-10			
	SE	-97	05-97	-52	33	01-90	-65	-62	-67	-70	-68	-58	-38	-37	-20	-33	-15	-11			
	UK	-87	06-91	-35	-3	03-90	-10	-13	-9	-6	-9	-8	-6	-6	-5	-7	-8	-14			
	EMPLOYMENT EXPECTATIONS	EU	-34	04-96	-12	9	02-90	-10	-8	-8	-6	-8	-7	-8	-3	-4	-3	-5	-3		
		Euro area	-38	04-96	-13	11	03-90	-12	-9	-10	-8	-10	-9	-11	-6	-7	-6	-9	-5		
	Component of the construction confidence indicator	BE	-24	11-95	-1	19	02-90	-3	-2	-1	-1	-1	-2	3	3	1	8	5			
CZ		-56	06-99	-15	12	06-95	-11	-11	-7	6	-2	-3	-1	-1	-3	-3	-2	1			
DK		-31	09-91	-6	42	03-98	-7	-11	-12	-8	-7	-3	-1	-3	-4	-4	-1	-1			
DE		-59	03-96	-26	19	02-90	-46	-44	-37	-38	-40	-41	-39	-36	-36	-37	-42	-42			
EE⁽ⁿ⁾		-57	03-99	9	58	03-97	-14	-11	-1	8	27	34	42	34	24	21	14	-1			
EL		-64	09-04	16	60	03-99	42	24	6	8	8	18	-3	1	-30	-49	-64	:			
ES		-66	03-93	-6	54	01-99	-1	15	-4	3	5	3	-12	2	0	16	11	31			
FR		-51	03-93	-11	31	10-00	3	6	10	8	3	7	9	7	7	9	11	10			
IE		-50	09-02	15	61	07-04	19	41	44	17	30	48	33	40	61	58	56	57			
IT		-60	10-93	-2	31	07-04	15	17	8	13	17	11	15	31	31	18	14	16			
CY⁽ⁿ⁾		2	09-04	24	60	11-03	60	27	4	7	6	9	27	18	48	30	2	8			
LV		-45	07-93	-8	26	03-04	-1	-5	-6	11	26	19	16	11	12	6	4	13			
LT		-56	09-00	-20	37	03-03	7	-11	-10	5	28	6	7	2	-2	-2	-2	5			
LU		-77	03-94	-25	36	03-90	-11	-21	-25	-27	-38	-48	-40	-37	-26	-22	-34	-12			
HU		-12	01-04	3	21	01-98	-2	-2	-12	-6	1	1	-1	5	1	1	1	-3			
NL		-26	05-03	2	36	12-00	-21	-22	-13	-11	-19	-11	-14	-11	-13	-10	-6	3			
AT		-76	02-01	-19	14	02-03	-22	-18	-9	3	-6	-5	-9	-12	-12	-9	-10	-11			
PL		-49	04-02	-14	18	05-96	-26	-23	-17	-21	-20	-15	-13	-13	-8	-8	-9	-2			
PT		-47	02-03	-7	18	09-97	-28	-32	-20	-21	-36	-21	-19	-24	-25	-21	-19	-18			
SI⁽ⁿ⁾		-30	12-02	-5	19	04-04	-15	-16	3	10	11	19	10	13	12	-3	1	-16			
SK		-86	07-99	-13	40	01-97	-3	-23	-17	-25	-19	-12	4	6	-1	2	2	1			
FI		-100	04-91	-12	59	03-97	-1	1	1	11	9	2	-5	7	4	5	5	10			
SE		-78	01-97	-28	45	01-01															

TABLE 6 (continued) : Monthly survey of construction industry (s.a.)^(a)

		Since 01/1985						2003		2004									
		Min.		Ave.		Max.		Nov.	Dec.	Jan.	Feb.	Mar.	Apr.	May	June	July	Aug.	Sep.	Oct.
		Value	Date	Value	Date	Value	Date												
TREND OF ACTIVITY COMPARED WITH PRECEDING MONTHS	EU	-35	03-93	-9	15	03-90	-4	0	1	0	-4	-3	-2	1	1	1	0	2	
	Euro area	-39	03-93	-9	17	03-90	-5	0	0	-2	-4	-4	-3	-1	-1	-2	-2	1	
	BE	-37	03-91	-4	36	02-90	-3	-5	3	-2	7	4	-2	-8	-4	-7	0	9	
	CZ	-34	06-99	22	76	01-04	59	61	76	57	47	27	32	37	42	42	33	52	
	DK	-21	04-03	-5	19	01-98	-9	-6	-6	-9	-6	-4	2	1	-2	-2	0	-2	
	DE	-44	11-02	-19	19	03-90	-29	-22	-23	-14	-15	-18	-20	-24	-26	-27	-25	-27	
	EE⁽ⁿ⁾	-67	06-99	16	76	09-98	46	14	4	-24	-31	-3	30	52	67	56	59	56	
	EL	-49	12-94	8	61	06-98	34	44	36	34	25	27	29	25	23	7	-10	:	
	ES	-49	07-97	5	59	01-99	19	27	15	0	0	2	-6	0	10	20	0	22	
	FR	-64	09-93	-10	42	08-00	-13	-5	4	4	5	9	16	17	10	12	16	20	
	IE	-45	09-91	3	47	07-04	16	38	19	21	25	40	31	41	47	24	23	46	
	IT	-50	03-93	-2	26	07-04	17	12	10	9	8	7	5	26	26	4	12	10	
	CY⁽ⁿ⁾	-95	09-04	7	56	11-03	56	48	3	0	28	2	14	13	13	28	-95	29	
	LV	-47	04-96	-4	44	06-02	5	2	10	1	-1	7	32	34	13	13	12	16	
	LT	-61	03-00	-6	81	06-02	14	-3	18	-5	-16	13	30	56	20	28	18	18	
	LU	-68	10-02	-23	30	04-91	-30	-21	4	-12	-48	-52	-24	-35	-38	-29	-6	-17	
	HU	-37	03-03	-7	14	03-99	-9	0	-10	-20	-13	-5	2	4	5	3	-2	-8	
	NL	-41	02-96	-3	37	03-97	-15	-14	-5	-5	-8	-9	-4	-8	-6	2	8	1	
	AT	-86	04-96	-9	27	01-04	8	14	27	-25	-55	-45	-12	-8	-3	-1	-7	4	
	PL	-30	01-02	8	36	06-96	-5	-5	11	3	-16	-13	-3	-2	9	12	11	17	
PT	-37	03-04	-8	24	05-97	-35	-27	-28	-24	-37	-26	-27	-34	-21	-10	-5	-10		
SI⁽ⁿ⁾	-35	02-03	17	45	08-03	33	31	21	0	-32	-4	3	31	38	34	35	25		
SK	-43	06-99	5	51	12-03	39	51	23	-9	-34	-7	20	24	40	44	50	47		
FI	-88	09-91	4	75	01-98	50	54	10	29	43	36	41	44	18	40	31	25		
SE	-67	12-91	-14	46	04-01	-22	-20	-45	-44	-27	-20	-30	-17	-13	2	21	9		
UK	-69	06-91	-7	16	02-04	4	1	11	16	2	6	6	12	8	13	9	3		
PRICE EXPECTATIONS	EU	-21	04-96	0	25	04-90	-1	1	0	2	3	5	7	5	7	10	6	4	
	Euro area	-26	04-96	-2	32	04-90	-6	-4	-4	-2	-1	0	2	-1	2	5	1	-1	
	BE	-22	01-96	-1	28	01-90	-7	-7	-8	-8	-3	-2	-2	0	2	0	0	3	
	CZ	-39	08-00	44	80	02-95	17	19	31	27	34	45	38	30	26	38	20	23	
	DK	-36	03-03	-18	0	05-98	-22	-20	-19	-19	-18	-13	-9	-13	-9	-9	-9	-10	
	DE	-45	03-96	-12	45	02-90	-20	-18	-17	-18	-14	-18	-16	-17	-21	-19	-21	-20	
	EE⁽ⁿ⁾	-19	03-97	30	91	06-94	1	6	10	15	31	46	56	45	23	32	34	33	
	EL	-28	03-93	8	35	06-95	0	0	3	-4	-4	-8	-9	-1	-7	-17	-27	:	
	ES	-20	10-93	18	71	10-00	8	12	9	6	8	20	13	20	24	47	25	18	
	FR	-60	03-93	-17	32	10-00	-18	-13	-6	-7	1	-1	3	-4	2	3	4	0	
	IE	-66	07-03	6	58	03-00	-42	-22	1	-9	15	12	32	13	54	34	16	8	
	IT	-16	07-93	18	63	06-90	21	18	11	26	21	19	23	13	22	21	20	17	
	CY⁽ⁿ⁾	13	04-03	40	83	06-04	36	48	18	71	16	16	54	83	78	61	49	18	
	LV	-11	03-01	23	62	05-04	10	16	20	28	37	47	62	60	54	50	50	54	
	LT	-5	03-01	34	89	01-95	14	12	15	21	30	38	45	48	40	47	43	47	
	LU	-67	05-93	-27	29	11-00	-39	-45	-40	-36	-49	-53	-47	-54	-49	-40	-43	-42	
	HU	1	03-03	12	32	03-01	10	12	9	5	9	17	12	10	10	10	9	11	
	NL	-7	01-04	25	69	04-01	-1	-5	-7	0	-2	0	6	5	7	9	11	13	
	AT	-53	04-96	-12	18	06-91	3	15	11	4	5	7	12	2	1	-4	-1	2	
	PL	-27	03-02	17	45	05-96	-10	-8	-5	-5	-1	9	14	13	12	9	7	11	
PT	-40	05-03	1	48	01-91	-33	-39	-31	-26	-38	-21	-15	-17	-17	-13	-16	-10		
SI⁽ⁿ⁾	-16	10-04	5	20	03-04	-5	4	9	12	20	13	17	16	11	13	12	-16		
SK	-20	08-00	56	93	06-97	43	31	30	42	43	45	45	46	47	62	39	41		
FI	-45	06-91	8	65	05-97	18	9	4	14	5	15	9	-4	19	6	5	-4		
SE	-75	08-91	-17	33	01-01	-15	-19	-31	-21	-23	2	-16	-18	5	-2	9	7		
UK	-56	12-90	14	43	08-04	30	35	32	34	33	36	38	41	43	43	40	34		

(a) The indicator is the average of the balances (%) for the questions on order-books and employment expectations.

TABLE 7a: Manufacturing industry; future Member States (s.a.)^(a)
Balances: i.e. differences between the percentages of respondents giving positive and negative replies (s.a.)

		Since 01/1990						2003		2004									
		Min.		Ave.		Max.		Nov.	Dec.	Jan.	Feb.	Mar.	Apr.	May	June	July	Aug.	Sep.	Oct.
		Value	Date	Value	Date	Value	Date												
CONFIDENCE INDICATOR	BG	-30	06-93	-9	8	11-95	0	0	-1	-2	0	0	-1	-1	1	1	0	-1	
	RO	-22	09-92	-1	28	06-96	8	12	2	9	9	5	1	2	5	3	5	4	
PRODUCTION EXPECTATIONS	BG	-17	02-97	20	42	11-95	27	30	24	19	25	29	24	27	28	28	26	26	
	RO	-8	07-92	23	52	03-03	26	36	23	42	43	32	21	20	25	21	23	27	
ORDER BOOKS	BG	-65	06-93	-44	-19	10-00	-37	-38	-36	-34	-33	-36	-36	-36	-31	-33	-35	-36	
	RO	-53	06-99	-16	50	06-96	-2	-3	-13	-14	-14	-11	-14	-13	-11	-13	-10	-14	
STOCKS OF FINISHED PRODUCTS ^(b)	BG	-22	06-97	2	35	08-93	-9	-7	-10	-8	-7	-6	-9	-6	-5	-7	-9	-8	
	RO	-4	06-96	10	50	07-92	-1	-3	4	1	1	6	3	1	-2	0	-3	1	

(a) The confidence indicator is the arithmetic average of the three components (the last with inverted sign).
(b) Highest figure is considered as minimum, lowest figure is considered as maximum.

TABLE 7b: Services^(a)

		Since 01/1990						2003		2004									
		Min.		Ave.		Max.		Nov.	Dec.	Jan.	Feb.	Mar.	Apr.	May	June	July	Aug.	Sep.	Oct.
		Value	Date	Value	Date	Value	Date												
CONFIDENCE INDICATOR	BG ⁽ⁿ⁾	12	03-03	30	43	06-02	29	26	25	28	34	36	26	29	30	30	33	23	
	RO ⁽ⁿ⁾	6	02-03	30	72	06-04	10	10	18	23	31	33	28	72	47	40	38	35	
ASSESSMENT OF BUSINESS CLIMATE	BG ⁽ⁿ⁾	10	05-03	33	60	12-02	30	25	28	22	16	23	16	15	30	31	28	28	
	RO ⁽ⁿ⁾	9	12-03	42	75	04-03	18	9	30	29	31	39	31	74	52	40	47	43	
EVOLUTION OF DEMAND IN RECENT MONTHS	BG ⁽ⁿ⁾	-11	05-02	18	32	03-04	28	24	25	26	32	23	18	28	21	29	28	25	
	RO ⁽ⁿ⁾	-4	02-03	22	69	06-04	18	19	16	3	14	21	9	69	41	34	22	40	
EVOLUTION OF DEMAND IN THE MONTHS AHEAD	BG ⁽ⁿ⁾	16	10-04	38	69	05-02	29	29	23	37	55	62	44	44	38	31	42	16	
	RO ⁽ⁿ⁾	-23	01-03	27	72	06-04	-5	1	9	36	49	38	45	72	48	46	46	22	

(a) The confidence indicator is the arithmetic average of the three components.
(n) Not seasonally adjusted.

TABLE 7c: Consumer opinion and financial condition; future Member States (a)

		Since 01/1990						2003		2004									
		Min.		Ave.		Max.		Nov.	Dec.	Jan.	Feb.	Mar.	Apr.	May	June	July	Aug.	Sep.	Oct.
		Value	Date	Value	Date	Value	Date												
CONFIDENCE INDICATOR	BG ⁽ⁿ⁾	-40	08-03	-29	-15	08-01	-29	-30	-30	-27	-27	-25	-25	-27	-29	-32	-28	-28	
	RO ⁽ⁿ⁾	-33	07-02	-25	-16	07-04	-29	-31	-24	-23	-24	-19	-19	-16	-16	-18	-18	-18	
FINANCIAL SITUATION OVER NEXT 12 MONTHS	BG ⁽ⁿ⁾	-24	08-03	-12	3	07-01	-15	-16	-15	-12	-11	-9	-10	-10	-13	-15	-10	-12	
	RO ⁽ⁿ⁾	-13	07-02	-4	6	09-04	-6	-8	-2	2	-1	2	2	4	6	6	6	3	
GEN. ECON. SITUATION OVER NEXT 12 MONTHS	BG ⁽ⁿ⁾	-26	08-03	-9	15	07-01	-11	-13	-13	-8	-8	-6	-5	-7	-11	-13	-9	-9	
	RO ⁽ⁿ⁾	-14	07-02	-2	10	06-04	-8	-8	-5	0	-2	2	4	10	8	7	5	7	
SAVINGS OVER NEXT 12 MONTHS	BG ⁽ⁿ⁾	-80	08-03	-75	-68	06-01	-77	-76	-74	-75	-75	-73	-75	-76	-73	-78	-76	-73	
	RO ⁽ⁿ⁾	-62	12-03	-55	-47	10-04	-60	-62	-54	-55	-56	-52	-52	-50	-47	-48	-50	-47	
UNEMPLOYMENT OVER NEXT 12 MONTHS	BG ⁽ⁿ⁾	3	08-01	20	30	03-02	13	15	17	14	12	11	11	13	17	20	17	18	
	RO ⁽ⁿ⁾	27	08-01	39	50	01-02	43	45	36	37	38	28	31	28	32	36	31	33	

(a) The confidence indicator is the average of the four components.
(n) Not seasonally adjusted.

TABLE 7d: Retail trade (s.a.)^(a)

		Since 01/1990						2003		2004									
		Min.		Ave.		Max.		Nov.	Dec.	Jan.	Feb.	Mar.	Apr.	May	June	July	Aug.	Sep.	Oct.
		Value	Date	Value	Date	Value	Date												
CONFIDENCE INDICATOR	BG	5	11-00	19	32	07-00	13	9	9	8	7	9	11	15	11	14	12	15	
	RO	1	06-99	16	36	12-97	19	21	18	20	21	19	18	24	19	22	24	24	
PRESENT BUSINESS SITUATION	BG	-3	03-04	23	54	11-97	6	3	6	1	-3	1	7	16	11	13	11	14	
	RO	-1	02-03	28	57	09-97	24	26	20	25	15	22	21	34	23	25	27	33	
VOLUME OF STOCKS EXPECTED BUSINESS SITUATION	BG	-55	03-97	-19	12	11-00	-14	-5	-8	-6	-5	-7	-9	-10	-7	-8	-8	-5	
	RO	-20	12-94	4	55	11-95	4	2	-4	-4	-6	0	1	1	1	3	-3	1	
	BG	-33	02-97	15	43	03-00	18	18	14	16	18	19	17	18	15	22	17	27	
	RO	-36	11-94	23	74	11-95	36	39	29	30	43	35	34	40	36	45	41	40	

(a) The confidence indicator is the arithmetic average of the three components (for stocks, with inverted sign).

TABLE 7e: Construction industry; future Member States (s.a.)^(a)

		Since 01/1990						2003		2004									
		Min.		Ave.		Max.		Nov.	Dec.	Jan.	Feb.	Mar.	Apr.	May	June	July	Aug.	Sep.	Oct.
		Value	Date	Value	Date	Value	Date												
CONFIDENCE INDICATOR	BG	-56	10-93	-30	-4	02-04	-16	-10	-12	-4	-12	-7	-17	-19	-13	-15	-13	-11	
	RO	-60	09-99	-9	35	06-96	7	4	-14	-9	-5	-12	-7	-7	-7	-13	-18	-7	
ORDER BOOKS	BG	-74	10-00	-44	-26	12-03	-29	-26	-28	-29	-28	-32	-31	-31	-33	-32	-30	-29	
	RO	-89	09-99	-11	64	03-98	-7	-5	-25	-28	-29	-30	-22	-18	-18	-27	-25	-23	
EMPLOYMENT EXPECTATIONS	BG	-50	10-93	-15	21	02-04	-2	6	4	21	4	18	-2	-6	8	3	4	7	
	RO	-39	06-97	-7	38	03-01	20	12	-3	10	19	6	8	4	5	1	-10	10	

(a) The confidence indicator is the average of both components.