



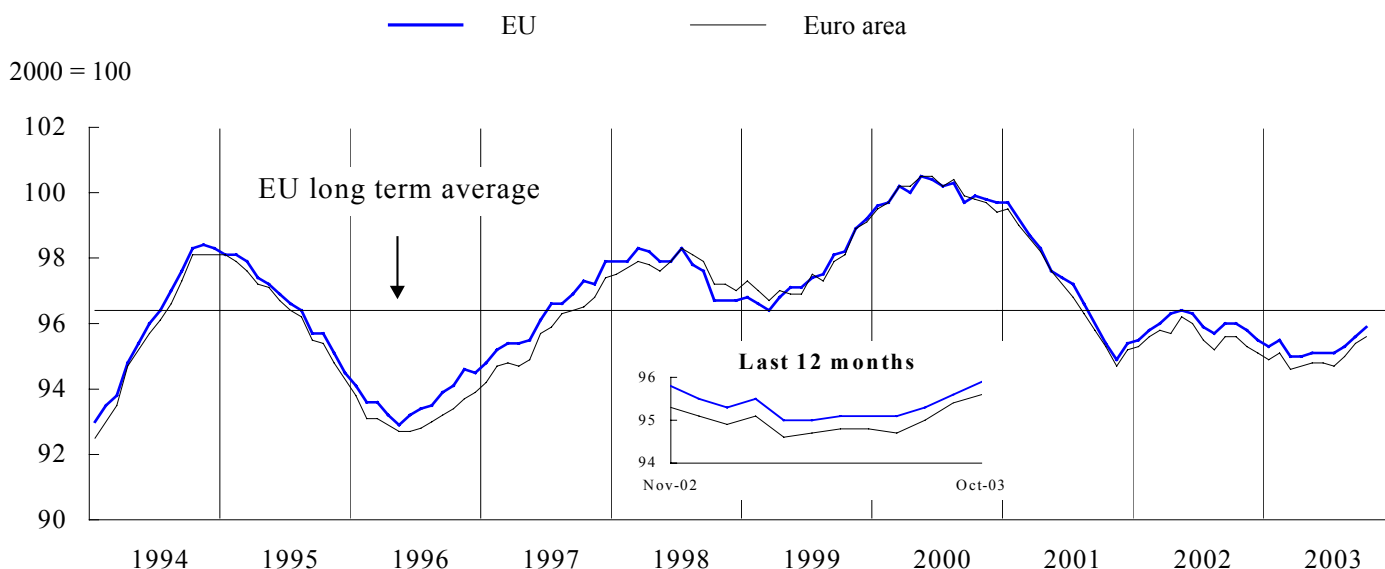
BUSINESS AND CONSUMER SURVEY RESULTS

October 2003

Next publication of Business and Consumer Survey Results scheduled for 28 November 2003

http://europa.eu.int/comm/economy_finance/indicators/businessandconsumersurveys_en.htm

GRAPH 1: Economic sentiment indicator (s.a.)



Economic sentiment continues its upward trend in both the EU and the euro area

The *economic sentiment indicator (ESI)* continued its rise in October, reaching 95.9 in the EU and 95.6 in the euro area. The indicator increased for the third consecutive month and is now at its highest level for the past 12 months. The improvement of the ESI is due to a rise in confidence in the business sector. Retailers, in particular, are clearly more upbeat compared with the views they held just two months ago. In the industry sector, the business climate has continued its trend towards more optimism already observed in the previous two months. A slight improvement in confidence seems to be underway also in the construction sector, although in view of the development over the last 12 months this needs to be confirmed in the coming months. The overall picture of increasing optimism in the business sector is complemented by data from the services sector, which shows a consolidation of the strong improvements observed over the past six months. Consumer confidence remained unchanged for the second month in a row, following its earlier sustained rise.

On a country level, fairly strong increases in confidence are noteworthy for *Denmark, Germany, Greece, Ireland, Portugal* and the *UK*. Only *Belgium, Spain, Italy* and *Luxembourg* show a (mild) deterioration in economic sentiment.

Industrial confidence continues to rise...

Industrial confidence in the EU improved for the third month in a row, bringing it back to the level of one year ago. The euro area shows a similar picture, with the overall improvement over the last months even slightly stronger. Industrial confidence in the euro area has now reached its highest level in more than two years. The rebound over the last three months can be observed for nearly all the euro area countries, with the exception of *Spain, Finland and Luxembourg*. Similar developments are shown for the EU countries outside the euro area, with *Sweden and Denmark* recording strong improvements while industrial confidence in the *UK* stabilised.

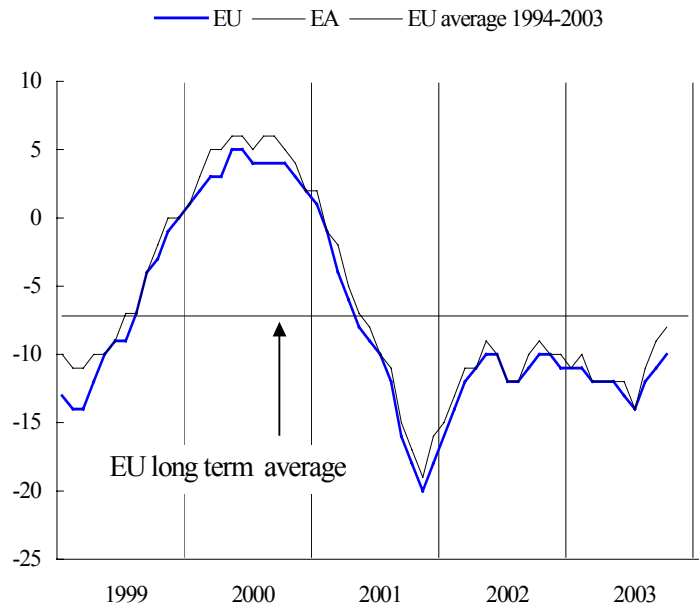
Among the components of the indicator *order books* recorded a particularly solid increase, with the improvement being almost universal across the EU countries. Results stand out, in particular, for *Ireland and France*, but clear upturns can also be seen in *Belgium, Finland and Denmark*. The assessment of *production expectations* stabilised after a strong increase over the last few months. The assessment of *stocks of finished products* also remained unchanged; the development of this indicator has been fairly flat over the last 12 months.

The results of the *quarterly survey in the manufacturing sector* are by and large consistent with the results of the monthly survey. In line with the upturn of the overall confidence indicator, both *new orders* and *export volume expectations* improved substantially compared with the July survey. *Capacity utilisation* also showed a small increase.

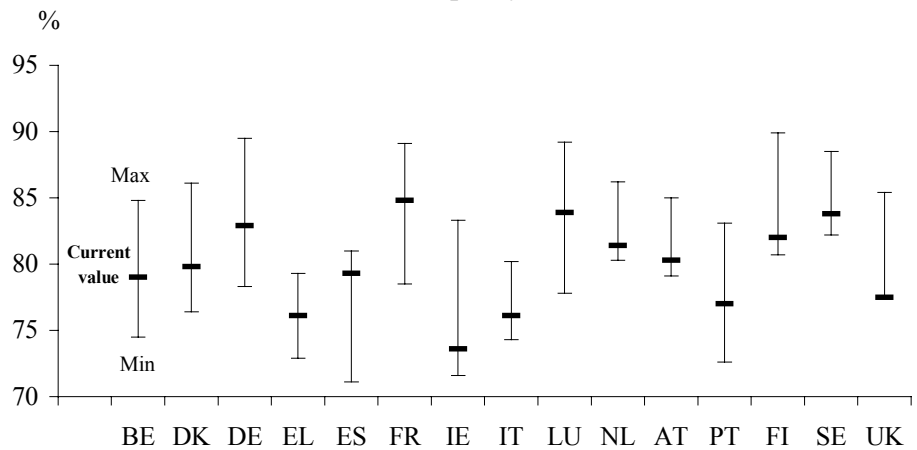
However, for around half of the EU countries this indicator is still very close to the long-term minimum, suggesting that any expected rise in investment demand might remain soft for some time.

Looking at the breakdown by industrial branches, a small improvement in the *capacity utilisation* can be observed across most branches. Similarly, the strong rise in *export volume expectations*, which can be seen for the industry as a whole, is reflected in almost all branches.

GRAPH 2: Industrial confidence indicator



GRAPH 2b: Capacity utilisation

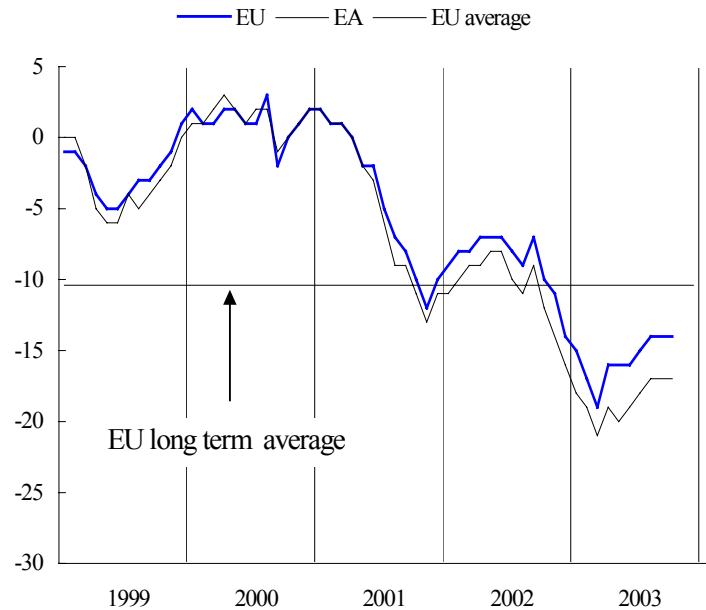


... while consumer confidence remains unchanged.

The *consumer confidence indicator* remained unchanged for the second month in a row in both the EU and the euro area. The indicator has seen a fairly sustained improvement since March, with one interruption in May. At country level, no striking changes can be observed either, with the exception of *Belgium*, where confidence fell by 8 points, and *Ireland*, where an increase of 6 points was recorded.

Households are slightly more pessimistic about their *financial situation over the next twelve months* and *expect to save less* in the coming year. However they are slightly more optimistic concerning the development of unemployment. Expectations for the *general economic situation* remained unchanged.

GRAPH 3: Consumer confidence indicator



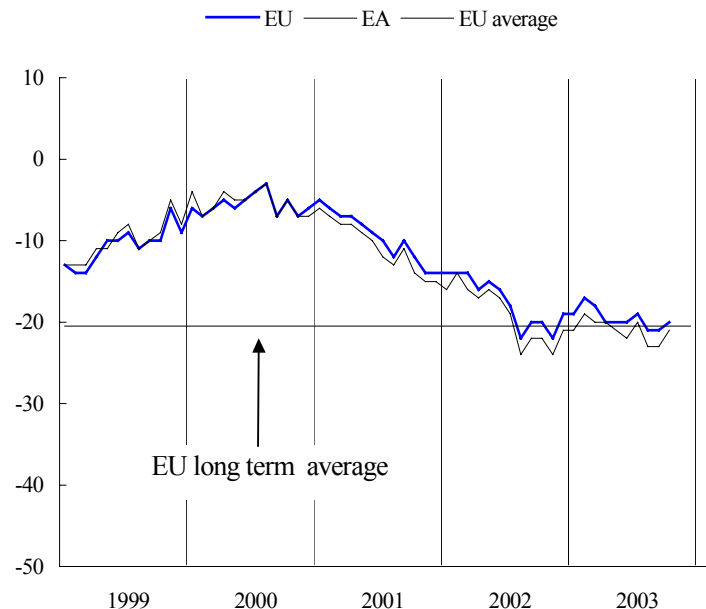
Confidence in the construction sector edges up ...

The *construction confidence indicator* edged up in both the EU and the euro area, following its slow but steady decline since March this year.

The small increase of the confidence indicator was mainly due to a less pessimistic view on *employment expectations*. The assessment of current *order books* did not show any remarkable change

At country level, the strong recovery of confidence in *Ireland* is noticeable. Where in March of this year the indicator stood at -29, this month it reached a value of +27.

GRAPH 4: Construction confidence indicator



... and rises rapidly in retail trade.

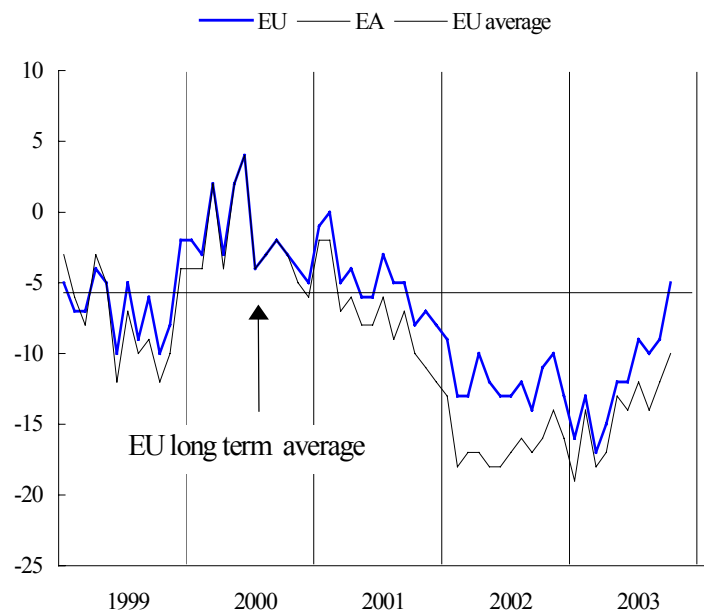
The **retail trade confidence indicator** in the EU continued its upward trend that started in April of this year. In October it has, for the first time since September 2001, risen above its long-term average.

Nearly all countries show an improvement over the past 6 months, but the developments were particularly impressive in the *UK*, where the indicator now approaches its long-term maximum. The *Netherlands* is the only country in the EU where retailers' confidence has declined markedly over the last 6 months.

The positive development of the indicator is reflected by all components. Managers' assessment of the *present business situation* as well as their assessment of the *expected business situation* improved strongly. Retailers also hold now significantly more positive views on the *volume of stock* compared to some months ago.

The increasingly positive assessment in the sector has not yet led to more optimistic employment expectations. However, the deterioration in October is mainly due to one country, namely *Italy*, where the indicator dropped by 29 points.

GRAPH 5: Retail confidence indicator

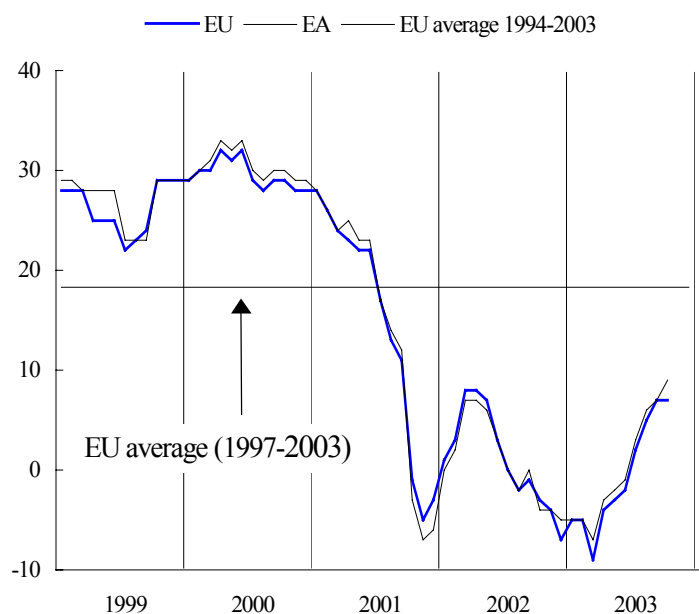


The strengthening of confidence in the services sector continues.

The development of the **services confidence indicator** in October confirms the upward trend observed over past months. In the euro area, sentiment in the services sector increased by 2 points. It remained unchanged in the EU, mainly due to a fairly strong decline in the *UK*. After having reached a record low in March of this year, confidence has shown a remarkable improvement for all countries except *Ireland*.

Of the underlying components of the indicator the assessment of the *present business situation* and of the *recent evolution of demand* showed a positive development, while managers were slightly less optimistic about the *future evolution of demand*.

GRAPH 6: Services confidence indicator



Developments in the future Member States

After a decline in September the **industrial confidence indicator** for the future Member States improved again, regaining its steady upward trend since the end of 2001. The improvement was most pronounced for the *Czech Republic* and *Slovakia*.

The **consumer confidence indicator**, although still at the historically low level, remained unchanged for the second month in a row, keeping the hope alive that we might see an upturn in the near future. Developments across countries were also quite stable. Only *Cyprus* and the *Czech Republic* showed a considerable worsening of consumer confidence, while in *Romania* the consumers were much more positive.

GRAPH 7: Confidence indicators in the future Member States

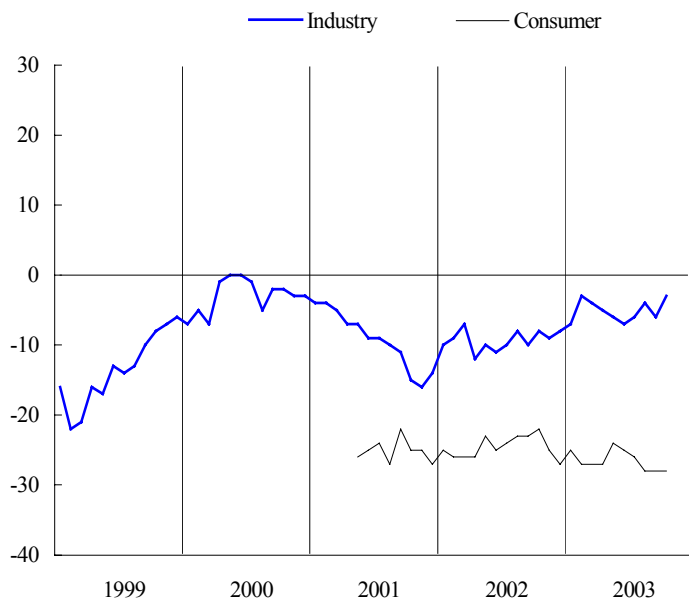


TABLE 1*: Indicators of confidence and economic sentiment (s.a.)

		Since 01/1990				2003											
		Min.		Max.		Nov	Dec.	Jan.	Feb.	Mar.	Apr.	May	June	July	Aug.	Sep.	Oct.
		Value	Date	Value	Date												
EU	1. industrial conf. ind.	-28	07-93	7	12-94	-10	-11	-11	-11	-12	-12	-12	-13	-14	-12	-11	-10
	2. consumer conf. ind.	-27	07-93	3	08-00	-11	-14	-15	-17	-19	-16	-16	-16	-15	-14	-14	-14
	3. construction conf. ind.	-42	04-96	4	02-90	-22	-19	-19	-17	-18	-20	-20	-20	-19	-21	-21	-20
	4. retail trade conf. ind.	-18	03-93	4	06-00	-10	-13	-16	-13	-17	-15	-12	-12	-9	-10	-9	-5
	=5. economic sent. ind.	90.5	07-93	100.5	05-00	95.8	95.5	95.3	95.5	95.0	95.0	95.1	95.1	95.1	95.3	95.6	95.9
	6. services conf. ind.	-9	03-03	32	06-00	-4	-7	-5	-5	-9	-4	-3	-2	2	5	7	7
Euro area	1. industrial conf. ind.	-31	07-93	6	09-00	-10	-10	-11	-10	-12	-12	-12	-12	-14	-11	-9	-8
	2. consumer conf. ind.	-29	08-93	3	04-00	-14	-16	-18	-19	-21	-19	-20	-19	-18	-17	-17	-17
	3. construction conf. ind.	-44	08-96	4	03-90	-24	-21	-21	-19	-20	-20	-21	-22	-20	-23	-23	-21
	4. retail trade conf. ind.	-21	03-93	8	08-90	-14	-16	-19	-14	-18	-17	-13	-14	-12	-14	-12	-10
	=5. economic sent. ind.	90.1	07-93	100.5	06-00	95.3	95.1	94.9	95.1	94.6	94.7	94.8	94.8	94.7	95.0	95.4	95.6
	6. services conf. ind.	-7	03-03	34	08-98	-4	-5	-5	-5	-7	-3	-2	-1	3	6	7	9
BE	1. industrial conf. ind.	-33	04-93	5	06-00	-10	-13	-13	-12	-17	-18	-20	-20	-20	-16	-14	-12
	2. consumer conf. ind.	-27	08-93	17	12-00	-2	-7	-11	-14	-18	-11	-11	-11	-12	-11	-5	-13
	3. construction conf. ind.	-35	11-95	10	02-00	-17	-18	-17	-18	-17	-21	-18	-15	-16	-12	-12	-13
	4. retail trade conf. ind.	-25	05-93	12	04-90	8	-2	2	-6	-15	-13	-10	-16	-12	-15	-12	-14
	=5. economic sent. ind.	93.1	04-93	100.5	06-00	97.2	96.5	96.4	96.2	95.4	95.4	95.5	95.5	95.5	96.0	96.5	96.2
	6. services conf. ind.	-8	03-03	33	03-98	0	-5	-5	2	-8	-2	1	-6	-3	-1	2	12
DK	1. industrial conf. ind.	-26	12-98	16	12-94	-4	-2	-4	-4	-8	-7	-12	-13	-13	-10	-9	-5
	2. consumer conf. ind.	-11	10-90	17	12-97	10	5	8	4	1	1	4	4	0	3	2	3
	3. construction conf. ind.	-38	12-91	20	03-98	-19	-20	-20	-16	-23	-25	-24	-22	-19	-15	-18	-17
	4. retail trade conf. ind.	-6	10-01	37	11-94	15	11	13	10	3	0	4	12	14	14	13	16
	=5. economic sent. ind.	95.9	12-98	102.3	11-94	98.6	98.6	98.5	98.5	97.7	97.6	97.4	97.6	97.5	98.0	98.0	98.4
	6. services conf. ind.	7	10-01	40	07-00	15	14	18	17	14	14	16	21	29	26	25	23
DE	1. industrial conf. ind.	-35	04-93	11	09-90	-17	-19	-18	-17	-20	-19	-19	-19	-21	-17	-14	-13
	2. consumer conf. ind.	-28	10-93	6	08-00	-17	-20	-19	-19	-21	-20	-23	-20	-18	-18	-19	-17
	3. construction conf. ind.	-62	11-02	3	01-91	-62	-59	-55	-53	-52	-49	-53	-52	-55	-54	-57	-55
	4. retail trade conf. ind.	-44	01-03	21	02-91	-39	-40	-44	-33	-36	-34	-29	-24	-22	-29	-22	-17
	=5. economic sent. ind.	94.1	07-93	104.9	09-90	94.9	94.7	94.9	95.4	94.8	95.3	95.0	95.5	95.2	95.5	95.9	96.4
	6. services conf. ind.	-23	12-02	52	03-99	-21	-23	-20	-18	-18	-9	-7	-4	5	10	14	13
EL	1. industrial conf. ind.	-12	09-90	13	03-00	5	1	-1	-1	-2	-7	-4	-1	0	0	-1	2
	2. consumer conf. ind.	-44	07-03	-6	04-00	-30	-32	-36	-37	-40	-38	-39	-44	-44	-40	-40	-39
	3. construction conf. ind.	-51	09-94	33	04-00	16	14	17	11	8	9	6	-3	3	8	14	20
	4. retail trade conf. ind.	-24	06-95	23	08-00	4	3	-2	5	10	2	7	11	12	15	19	21
	=5. economic sent. ind.	95.4	09-91	101.0	04-00	98.8	98.3	97.9	98.0	97.8	97.3	97.5	97.5	97.8	98.1	98.3	98.7
	6. services conf. ind.	-14	04-03	62	08-00	-1	0	10	0	-4	-14	1	5	3	4	5	15
ES	1. industrial conf. ind.	-44	01-93	7	04-00	-3	0	-1	2	2	0	0	-3	-1	-1	-2	-2
	2. consumer conf. ind.	-37	10-92	6	03-00	-12	-16	-16	-17	-18	-16	-14	-11	-14	-12	-11	-12
	3. construction conf. ind.	-57	10-92	42	01-99	3	5	10	16	16	9	10	11	19	4	8	4
	4. retail trade conf. ind.	-36	02-93	10	06-00	-1	-3	-5	0	-3	1	-4	-3	-3	-3	-1	2
	=5. economic sent. ind.	92.2	01-93	100.6	04-00	98.6	98.4	98.4	98.8	98.7	98.7	98.6	98.6	98.7	98.7	98.7	98.5
	6. services conf. ind.	15	08-02	56	06-98	18	19	17	22	17	24	25	21	19	18	19	24
FR	1. industrial conf. ind.	-41	07-93	15	06-00	-11	-5	-6	-10	-9	-9	-9	-12	-10	-10	-10	-9
	2. consumer conf. ind.	-34	08-93	4	01-01	-18	-17	-20	-26	-30	-27	-26	-25	-24	-23	-23	-24
	3. construction conf. ind.	-61	03-93	34	10-00	-10	-6	-10	-8	-8	-9	-10	-12	-11	-11	-10	-7
	4. retail trade conf. ind.	-37	01-93	5	10-94	-14	-15	-23	-22	-24	-27	-17	-24	-19	-23	-28	-21
	=5. economic sent. ind.	90.0	06-93	100.4	10-00	95.5	96.2	95.7	95.3	95.2	95.2	95.4	94.9	95.2	95.2	95.1	95.4
	6. services conf. ind.	-22	06-93	25	06-90	0	2	-2	-3	-8	-9	-7	-5	-4	-4	-4	-3
IE	1. industrial conf. ind.	-23	11-01	21	11-99	-4	-7	-10	-14	-17	-11	-12	-12	-8	-9	-9	2
	2. consumer conf. ind.	-31	03-93	19	01-00	-13	-17	-17	-17	-17	-17	-18	-18	-18	-18	-18	-12
	3. construction conf. ind.	-54	09-02	58	06-97	-20	-21	-15	-16	-29	-2	0	-2	12	11	23	27
	4. retail trade conf. ind.	-21	05-03	24	06-00	-10	-14	-3	-7	-16	-17	-21	-18	-20	-17	-12	-9
	=5. economic sent. ind.	95.1	02-93	100.7	11-99	97.1	96.7	96.9	96.6	96.2	96.8	96.7	96.7	96.9	97.1	97.3	98.0
	6. services conf. ind.	-14	05-03	44	08-98	-3	-10	-3	-2	-4	-3	-14	-3	-8	-7	-4	-10
IT	1. industrial conf. ind.	-22	01-93	16	05-00	-1	-5	-3	-1	-4	-6	-6	-4	-10	-3	-1	-2
	2. consumer conf. ind.	-38	04-93	2	06-01	-12	-17	-16	-13	-14	-14	-14	-15	-16	-14	-12	-14
	3. construction conf. ind.	-68	10-93	21	05-90	8	9	1	1	3	0	-1	-2	-2	-7	-7	-2
	4. retail trade conf. ind.	-19	10-96	39	10-95	17	16	13	19	6	14	14	8	14	18	17	13
	=5. economic sent. ind.	94.4	04-93	100.5	06-00	98.8	98.1	98.2	98.6	98.2	98.1	98.0	98.0	97.5	98.3	98.6	98.4
	6. services conf. ind.	-5	10-02	43	02-98	3	-1	3	-1	-1	4	-1	-1	-2	7	3	10

TABLE 1* (continued) : Indicators of confidence and economic sentiment (s.a.)

		Since 01/1990				2003											
		Min.		Max.													
		Value	Date	Value	Date	Nov	Dec.	Jan.	Feb.	Mar.	Apr.	May	June	July	Aug.	Sep.	Oct.
LU	1. industrial conf. ind.	-36	05-92	25	04-95	-14	-20	-13	-14	-12	-17	-19	-20	-19	-16	-9	-22
	2. consumer conf. ind. (n)	-5	11-02	14	02-02	-5	-1	0	-1	-3	-2	1	-1	2	2	4	1
	3. construction conf. ind.	-74	03-94	24	03-90	-45	-56	-61	-54	-55	-43	-40	-49	-47	-47	-34	-30
	4. retail trade conf. ind.	:	:	:	:	:	:	:	:	:	:	:	:	:	:	:	:
	=5. economic sent. ind.	95.9	08-93	100.9	04-00	97.3	97.0	97.2	97.2	97.2	97.2	97.3	97.1	97.2	97.3	97.8	97.3
	6. services conf. ind.	:	:	:	:	:	:	:	:	:	:	:	:	:	:	:	:
NL	1. industrial conf. ind.	-12	06-03	6	10-00	-4	-4	-6	-9	-9	-8	-9	-12	-9	-10	-8	-7
	2. consumer conf. ind.	-20	07-93	31	04-00	-6	-8	-15	-16	-17	-19	-15	-14	-19	-12	-14	-15
	3. construction conf. ind.	-25	06-03	27	12-00	-17	-14	-13	-19	-21	-24	-25	-25	-22	-21	-20	-23
	4. retail trade conf. ind.	-12	09-03	29	10-99	5	2	4	2	4	3	-5	-7	-8	-9	-12	-11
	=5. economic sent. ind.	92.2	06-03	100.4	10-00	94.6	94.4	93.9	93.1	93.0	92.8	92.7	92.2	92.3	92.5	92.5	92.6
	6. services conf. ind.	-9	07-93	35	03-99	13	14	10	6	5	9	9	3	9	6	9	7
AT	1. industrial conf. ind.	-30	09-93	8	03-90	-14	-14	-13	-11	-12	-12	-13	-13	-14	-13	-9	-7
	2. consumer conf. ind.	-16	04-96	11	08-00	7	7	2	2	-5	-5	-7	-8	-7	-5	-2	-1
	3. construction conf. ind.	-60	04-96	-13	02-03	-38	-38	-27	-13	-27	-24	-21	-26	-21	-21	-24	-25
	4. retail trade conf. ind.	-29	03-03	4	07-00	-15	-25	-27	-18	-29	-27	-19	-16	-18	-15	-16	-10
	=5. economic sent. ind.	97.1	04-96	100.3	07-00	98.9	98.8	98.8	99.3	98.7	98.9	98.9	98.9	98.9	99.0	99.3	99.6
	6. services conf. ind.	0	01-02	30	03-98	9	8	8	8	3	3	3	8	12	9	17	17
PT	1. industrial conf. ind.	-28	07-93	6	03-98	-17	-16	-18	-18	-17	-22	-19	-18	-18	-17	-14	-14
	2. consumer conf. ind.	-48	03-03	-1	07-91	-40	-41	-44	-48	-48	-47	-45	-42	-41	-41	-39	-37
	3. construction conf. ind.	-57	02-03	-1	12-97	-49	-50	-51	-57	-50	-47	-45	-42	-52	-42	-47	-46
	4. retail trade conf. ind.	-27	02-03	4	07-99	-23	-19	-27	-27	-24	-22	-24	-25	-22	-20	-21	-21
	=5. economic sent. ind.	94.5	06-93	100.8	05-98	95.5	95.5	95.0	94.7	95.1	94.7	95.1	95.4	95.2	95.6	95.9	96.1
	6. services conf. ind.	-17	05-03	29	06-01	-8	-4	-3	-2	-11	-14	-17	-13	-5	-5	-10	-6
FI	1. industrial conf. ind.	-24	01-93	29	11-94	0	-8	-17	-10	-4	-8	-3	-12	-4	-5	0	-3
	2. consumer conf. ind.	6	11-01	23	02-00	13	11	12	10	10	11	9	8	10	11	14	15
	3. construction conf. ind.	-98	09-91	48	06-98	13	11	11	17	0	3	-9	-12	6	-5	1	6
	4. retail trade conf. ind.	-17	11-00	8	05-97	-3	-11	-10	-2	-8	-9	-9	-12	-12	-7	-8	-7
	=5. economic sent. ind.	93.2	09-91	100.6	12-97	99.2	98.7	98.3	98.8	98.6	98.5	98.4	98.0	98.6	98.5	98.9	99.0
	6. services conf. ind.	-11	09-03	61	09-00	25	21	1	11	-11	-8	-5	-6	8	6	-11	10
SE	1. industrial conf. ind.	-29	10-01	15	05-00	-14	-11	-9	5	5	0	-2	-14	-18	-11	-14	-10
	2. consumer conf. ind.	-10	09-96	24	08-00	10	10	7	6	3	4	4	2	5	6	8	6
	3. construction conf. ind.	-83	12-93	25	01-01	-39	-45	-41	-30	-37	-47	-47	-52	-67	-64	-57	-58
	4. retail trade conf. ind.	-8	10-01	27	04-00	19	16	11	9	5	2	4	0	-2	4	9	5
	=5. economic sent. ind.	96.0	06-96	100.4	08-00	97.9	97.8	97.8	98.6	98.3	97.9	97.8	97.1	96.6	97.2	97.3	97.3
	6. services conf. ind.	-24	03-03	46	02-01	-17	-16	-24	-17	-24	-10	1	6	2	4	3	7
UK	1. industrial conf. ind.	-40	02-91	11	02-95	-9	-15	-15	-18	-17	-20	-18	-17	-21	-17	-21	-21
	2. consumer conf. ind.	-28	10-92	7	04-98	-1	-6	-9	-10	-11	-8	-6	-6	-6	-6	-3	-3
	3. construction conf. ind.	-80	06-91	3	09-01	-3	-2	1	-6	-5	-10	-6	-4	2	-4	-4	-3
	4. retail trade conf. ind.	-27	09-92	19	04-02	2	-7	-9	-12	-16	-11	-9	-4	0	3	0	16
	=5. economic sent. ind.	94.7	02-91	101.1	10-97	100.2	99.6	99.4	99.1	99.0	98.9	99.2	99.5	99.5	99.6	99.4	99.7
	6. services conf. ind.	-20	12-02	37	11-97	-4	-20	-8	-5	-19	-14	-13	-16	-11	-5	2	-4

* In the tables: (s.a.) = seasonally adjusted, (n) = not seasonally adjusted, : = not available.

The economic sentiment indicator (2000=100) is composed of the industrial confidence indicator (40%), the consumer confidence indicator (20%), the construction confidence indicator (20%), and the retail trade confidence indicator (20%); except for Luxemburg for which it is composed of the industrial (50%), the consumer (25%) and the construction confidence indicator (25%). All confidence indicators are balances.

Source: unless stated otherwise: European Commission business and consumer surveys.

TABLE 2.a: **Monthly survey of manufacturing industry** — Monthly questions and the composite industrial confidence indicator^(a)

Balances: i.e. differences between the percentages of respondents giving positive and negative replies (s.a.)

		Since 01/1990		2002				2003									
		Min.		Max.													
		Value	Date	Value	Date	Nov.	Dec.	Jan.	Feb.	Mar.	Apr.	May	June	July	Aug.	Sep.	Oct.
INDUSTRIAL CONFIDENCE INDICATOR	EU	-28	07-93	7	12-94	-10	-11	-11	-11	-12	-12	-12	-13	-14	-12	-11	-10
	Euro area	-31	07-93	6	09-00	-10	-10	-11	-10	-12	-12	-12	-12	-14	-11	-9	-8
	BE	-33	04-93	5	06-00	-10	-13	-13	-12	-17	-18	-20	-20	-20	-16	-14	-12
	DK	-26	12-98	16	12-94	-4	-2	-4	-4	-8	-7	-12	-13	-13	-10	-9	-5
	DE	-35	04-93	11	09-90	-17	-19	-18	-17	-20	-19	-19	-19	-21	-17	-14	-13
	EL	-12	09-90	13	03-00	5	1	-1	-1	-2	-7	-4	-1	0	0	-1	2
	ES	-44	01-93	7	04-00	-3	0	-1	2	2	0	0	-3	-1	-1	-2	-2
	FR	-41	07-93	15	06-00	-11	-5	-6	-10	-9	-9	-9	-12	-10	-10	-10	-9
	IE	-23	11-01	21	11-99	-4	-7	-10	-14	-17	-11	-12	-12	-8	-9	-9	2
	IT	-22	01-93	16	05-00	-1	-5	-3	-1	-4	-6	-6	-4	-10	-3	-1	-2
	LU	-36	05-92	25	04-95	-14	-20	-13	-14	-12	-17	-19	-20	-19	-16	-9	-22
	NL	-12	06-03	6	10-00	-4	-4	-6	-9	-9	-8	-9	-12	-9	-10	-8	-7
	AT	-30	09-93	8	03-90	-14	-14	-13	-11	-12	-12	-13	-13	-14	-13	-9	-7
	PT	-28	07-93	6	03-98	-17	-16	-18	-18	-17	-22	-19	-18	-18	-17	-14	-15
	FI	-24	01-93	29	11-94	0	-8	-17	-10	-4	-8	-3	-12	-4	-5	0	-3
SE	-29	10-01	15	05-00	-14	-11	-9	5	5	0	-2	-14	-18	-11	-14	-10	
UK	-40	02-91	11	02-95	-9	-15	-15	-18	-17	-20	-18	-17	-21	-17	-21	-21	
PRODUCTION EXPECTATIONS	EU	-16	12-92	23	12-94	5	1	0	3	0	0	1	-1	-1	3	7	7
	Euro area	-18	12-92	21	12-94	3	1	-1	2	0	1	0	0	-1	4	9	8
Component of the industrial confidence indicator	BE	-36	04-93	16	12-94	-3	-3	-4	-5	-11	-13	-17	-16	-13	-7	-4	-3
	DK	-23	12-98	30	02-98	11	10	7	4	3	4	1	2	6	3	11	13
	DE	-26	11-92	20	12-94	-3	-9	-8	-6	-10	-6	-8	-9	-11	-4	6	6
	EL	3	02-91	44	02-00	33	27	19	17	21	16	24	25	23	25	28	33
	ES	-19	01-93	17	02-03	0	5	2	17	15	15	9	7	12	16	4	5
	FR	-29	07-93	27	10-00	4	5	4	1	1	2	1	-2	3	6	10	3
	IE	-22	11-01	35	11-99	15	7	-1	-7	-7	1	-9	-2	10	-5	-3	14
	IT	-20	06-96	34	06-00	14	10	11	18	12	10	14	18	5	16	20	21
	LU	-42	10-91	28	04-95	-4	-9	-1	-10	-5	-13	-17	-15	-11	-15	3	-10
	NL	-4	06-03	15	11-99	6	4	2	-1	0	4	-2	-4	1	-2	5	3
	AT	-19	06-93	17	06-90	8	11	4	7	4	3	3	7	4	4	11	13
	PT	-14	04-03	21	01-97	-7	-5	-9	-8	-10	-14	-8	-5	-3	-4	-3	0
	FI	-26	06-91	39	10-94	8	0	-22	4	13	-2	18	-1	19	19	27	8
	SE	-19	06-91	46	05-00	17	6	8	33	31	25	22	9	0	13	10	17
	UK	-38	02-91	33	03-95	9	3	3	-3	-7	-10	-1	-5	-6	-5	-6	-1
ORDER BOOKS	EU	-49	07-93	4	05-00	-23	-23	-22	-24	-25	-26	-27	-28	-29	-26	-27	-24
	Euro area	-54	07-93	5	09-00	-22	-22	-22	-23	-26	-27	-27	-28	-28	-26	-26	-22
Component of the industrial confidence indicator	BE	-51	05-93	11	06-00	-21	-28	-29	-25	-31	-33	-34	-36	-37	-32	-36	-30
	DK	-41	04-99	32	12-94	-12	-8	-14	-13	-19	-19	-23	-27	-31	-22	-25	-19
	DE	-61	07-93	12	07-90	-34	-35	-33	-31	-35	-36	-35	-34	-37	-33	-33	-31
	EL	-30	12-93	6	05-98	-12	-15	-15	-13	-16	-26	-25	-19	-14	-16	-18	-18
	ES	-65	01-93	11	07-98	-9	-3	-5	-11	-5	-10	-6	-8	-12	-15	-5	-4
	FR	-64	06-93	27	06-00	-18	-11	-15	-20	-23	-23	-26	-28	-22	-24	-28	-19
	IE	-36	06-93	24	12-99	-13	-18	-20	-22	-35	-21	-24	-24	-21	-16	-23	-9
	IT	-44	02-93	16	05-00	-13	-17	-13	-15	-19	-22	-23	-23	-25	-16	-18	-17
	LU	-64	02-92	34	12-97	-40	-41	-30	-33	-29	-36	-35	-40	-36	-29	-31	-36
	NL	-25	01-93	5	12-00	-12	-11	-15	-18	-18	-19	-18	-22	-19	-19	-20	-17
	AT	-57	04-96	11	03-90	-36	-38	-32	-27	-29	-29	-33	-36	-34	-33	-31	-28
	PT	-52	07-93	8	03-98	-28	-29	-32	-31	-33	-42	-36	-36	-40	-38	-32	-31
	FI	-70	09-91	39	11-94	-14	-12	-21	-24	-22	-22	-30	-31	-29	-35	-30	-24
	SE	-66	03-92	25	12-94	-34	-31	-20	-8	-9	-13	-13	-22	-35	-27	-27	-26
	UK	-62	07-91	11	02-95	-23	-32	-26	-34	-28	-27	-31	-30	-36	-27	-34	-36
STOCKS OF FINISHED PRODUCTS ^(b)	EU	3	12-94	23	07-93	11	11	11	11	10	11	11	11	13	12	12	12
	Euro area	2	04-00	24	07-93	10	10	9	10	10	10	9	9	12	11	10	10
Component of the industrial confidence indicator	BE	-3	02-95	26	10-01	6	7	7	7	8	9	9	8	10	8	1	4
	DK	-7	03-94	28	06-99	11	9	6	3	7	7	14	13	13	10	12	10
	DE	-9	09-90	25	08-93	13	13	14	15	16	15	15	13	15	15	15	14
	EL	1	06-94	22	09-90	7	8	8	8	12	11	12	10	9	10	12	9
	ES	-1	11-02	47	01-93	-1	3	0	1	3	5	4	7	4	3	5	7
	FR	-2	04-00	34	06-93	19	9	6	10	6	7	2	6	12	12	11	12
	IE	-13	12-99	23	11-93	13	9	10	12	9	13	2	10	13	5	1	0
	IT	1	06-00	22	02-92	3	9	7	7	6	5	10	8	10	8	4	9
	LU	-22	03-95	31	03-02	-2	11	8	0	1	3	5	5	9	5	-1	19
	NL	-1	12-94	11	09-93	5	6	6	7	8	8	7	9	10	10	10	7
	AT	4	06-90	26	07-96	14	14	11	12	11	10	10	9	11	10	8	7
	PT	-6	10-94	25	06-93	15	15	14	14	8	11	12	14	12	9	7	13
	FI	-20	04-95	31	01-96	-6	11	9	9	4	-1	-3	3	1	-1	-4	-8
	SE	3	03-00	37	11-01	25	9	14	11	8	12	15	29	19	20	24	21
	UK	7	05-95	32	11-98	13	16	22	16	17	23	22	15	20	19	23	26

		Monthly survey of manufacturing industry															
		Since 01/1990				2002				2003							
		Min.		Max.		Nov.	Dec.	Jan.	Feb.	Mar.	Apr.	May	June	July	Aug.	Sep.	Oct.
Value	Date	Value	Date														
PRODUCTION TREND OBSERVED IN RECENT MONTHS	EU	-23	01-93	19	01-95	-4	-1	-6	-4	-9	-6	-9	-8	-10	-5	-10	-3
	Euro area	-25	05-93	16	05-00	-5	-1	-6	-4	-12	-6	-11	-9	-11	-6	-11	-3
	BE	-20	02-93	16	05-97	4	-2	-6	0	-8	-15	-4	-9	-9	-1	-6	-3
	DK	-21	04-99	41	09-94	11	16	5	4	-2	-4	7	-1	-10	-5	0	8
	DE	-32	02-02	22	12-90	-9	-5	-12	-9	-21	-7	-18	-11	-16	-5	-14	-3
	EL	-5	10-90	36	01-00	13	17	13	16	-2	7	9	9	15	15	16	19
	ES	-44	04-93	21	04-95	5	11	6	5	4	13	10	10	3	0	2	7
	FR	-38	07-93	36	01-95	-7	5	-5	0	-7	-12	-13	-11	-10	-12	-15	-6
	IE	-25	10-01	38	03-00	13	8	5	3	0	9	1	-7	4	0	-2	-7
	IT	-36	05-93	17	07-00	-13	-7	-8	-13	-14	-11	-15	-16	-19	-13	-14	-14
	LU	-41	04-92	32	04-95	3	-5	-10	-4	8	7	2	-18	-4	-2	-2	1
	NL	-12	05-93	14	10-97	3	0	-1	1	-1	-4	-1	-7	-4	4	-3	7
	AT	-28	06-93	27	03-90	1	1	1	9	3	3	0	1	0	6	7	12
	PT	-20	05-03	15	08-94	-12	-12	-15	-13	-14	-20	-20	-11	-16	-5	-12	-8
	FI	-28	06-91	47	07-97	15	-6	18	-1	-18	-9	-4	-11	-15	-4	-6	13
	SE	-28	07-91	48	12-94	10	17	18	23	22	13	26	14	4	12	9	15
	UK	-46	06-91	34	03-95	-2	-8	-12	-6	-3	-7	-9	-9	-5	-10	-13	-15
	EXPORT ORDER BOOKS	EU	-44	08-93	3	01-95	-21	-23	-21	-20	-24	-25	-26	-28	-28	-26	-26
Euro area		-50	08-93	4	10-00	-20	-20	-19	-18	-24	-26	-26	-29	-27	-26	-25	-23
BE		-56	05-93	7	06-00	-23	-24	-30	-19	-29	-32	-35	-37	-41	-30	-36	-29
DK		-39	04-99	25	09-94	-13	-8	-13	-13	-17	-16	-23	-29	-28	-22	-25	-16
DE		-60	08-93	0	02-90	-25	-26	-25	-26	-27	-29	-30	-31	-30	-30	-30	-28
EL		-36	05-03	13	03-95	-27	-25	-25	-26	-25	-31	-36	-31	-30	-31	-34	-28
ES		-55	01-93	6	05-95	-7	-6	-2	-4	-8	-8	-9	-13	-14	-17	-4	-3
FR		-65	07-93	36	06-00	-15	-8	-10	-10	-21	-24	-18	-28	-23	-22	-23	-20
IE		-53	09-93	38	06-00	-28	-34	-10	-7	-44	-35	-50	-47	-27	-18	-14	-13
IT		-41	12-92	28	03-95	-17	-21	-16	-18	-24	-24	-25	-25	-28	-24	-21	-23
LU		-75	11-91	45	04-00	-49	-48	-38	-36	-30	-42	-39	-40	-42	-37	-39	-43
NL		-24	02-93	11	10-00	-9	-8	-11	-12	-12	-14	-16	-21	-18	-18	-18	-14
AT		-58	04-96	-1	03-90	-41	-44	-41	-35	-37	-37	-44	-41	-48	-48	-46	-42
PT		-58	04-93	22	01-95	-25	-27	-31	-26	-25	-28	-29	-31	-27	-26	-23	-9
FI		-43	01-99	41	01-95	-17	-14	-22	-24	-21	-28	-34	-36	-32	-36	-33	-28
SE		-45	12-01	45	08-91	-25	-25	-15	11	0	-4	-13	-19	-24	-24	-27	-17
UK	-55	10-98	19	04-95	-32	-42	-39	-37	-32	-26	-30	-23	-29	-26	-35	-32	
EMPLOYMENT EXPECTATIONS	EU	-39	09-93	3	12-00	-19	-20	-17	-17	-18	-20	-20	-22	-21	-20	-20	-19
	Euro area	-42	06-93	4	12-00	-17	-18	-16	-17	-18	-18	-19	-21	-20	-19	-19	-17
	BE	-26	09-93	9	12-00	-15	-17	-14	-13	-17	-22	-18	-18	-17	-20	-20	-18
	DK	-23	06-93	13	03-98	-11	-10	-7	-1	-2	-9	-14	-10	-7	-4	-2	-9
	DE	-52	06-93	8	02-90	-26	-28	-26	-25	-25	-22	-26	-27	-27	-24	-22	-21
	EL	-11	06-91	12	05-02	-7	-4	-8	-3	0	2	-8	-8	-6	-6	-6	-2
	ES	-53	06-93	9	03-01	-11	-12	4	-9	-4	-5	-6	-7	-3	-13	-9	-12
	FR	-50	09-93	12	09-00	-16	-16	-18	-22	-22	-23	-22	-26	-25	-28	-30	-22
	IE	-34	12-92	16	09-00	-17	-11	-12	-6	-20	-32	-20	-22	-9	-14	-26	-22
	IT	-30	08-96	11	11-00	-5	-7	-3	-4	-5	-7	-6	-6	-8	-5	-4	-7
	LU	-55	12-91	1	09-01	-33	-33	-27	-26	-29	-29	-30	-28	-36	-34	-31	-37
	NL	-30	06-93	15	06-90	-15	-17	-17	-15	-15	-17	-16	-19	-14	-13	-16	-14
	AT	-29	05-96	6	09-00	-11	-11	-12	-5	-9	-13	-13	-10	-12	-13	-14	-4
	PT	-35	06-93	-1	02-90	-23	-24	-29	-24	-31	-32	-29	-29	-24	-24	-25	-26
	FI	-60	06-91	14	12-00	-25	-21	-23	-26	-23	-31	-36	-38	-26	-23	-18	-23
	SE	-51	06-92	23	12-94	-25	-29	-21	-17	-14	-16	-28	-33	-39	-37	-36	-38
UK	-50	03-91	2	06-97	-26	-27	-26	-19	-19	-31	-26	-27	-25	-26	-25	-25	
SELLING-PRICE EXPECTATIONS	EU	-13	01-99	25	02-95	-3	-2	0	0	1	0	-4	-8	-6	-4	-3	-2
	Euro area	-10	01-99	24	02-95	-1	0	3	2	4	1	-4	-8	-6	-3	-2	-2
	BE	-18	02-96	26	12-94	0	3	2	4	1	-6	-8	-7	-11	-10	-5	-4
	DK	-12	11-01	11	11-00	-5	-3	0	-5	-1	3	-1	-4	1	-1	2	4
	DE	-8	12-93	23	02-95	-2	-4	-2	-2	2	-1	-3	-4	-5	0	0	-2
	EL	-4	01-99	41	10-90	6	8	6	14	8	7	4	2	5	8	9	13
	ES	-18	04-93	35	04-95	2	6	3	7	6	7	4	-2	0	5	-2	3
	FR	-26	01-99	24	02-90	-10	0	5	-2	3	0	-14	-23	-13	-12	-12	-7
	IE	-25	11-92	15	01-00	2	-6	5	3	-11	-10	-13	-17	-9	-17	-12	-14
	IT	-9	12-96	38	03-95	4	2	8	11	8	9	4	3	1	4	9	5
	LU	-50	08-91	53	12-94	-4	-10	-7	-2	-12	-2	-5	-2	-13	-14	-18	-11
	NL	-7	01-99	20	12-94	3	2	4	4	7	5	1	-3	-3	-3	1	2
	AT	-23	03-96	17	03-90	-3	-3	-5	0	2	-1	-4	-9	-8	-5	-4	2
	PT	-9	01-02	29	10-90	4	0	5	-1	4	-2	-8	-5	-6	5	0	0
	FI	-34	03-96	49	08-94	6	14	9	1	-1	-20	-21	-22	-14	-16	-9	-18
	SE	-20	11-96	37	12-94	-8	-13	-8	8	9	8	6	-5	-3	-4	2	-1
UK	-30	01-99	29	02-95	-12	-12	-15	-15	-18	-8	-8	-13	-10	-13	-10	-7	

(a) The indicator is the arithmetic average of the balances (%) of the questions on production expectations, order-books and stocks (the last with inverted sign).

(b) Highest figure is considered as minimum, lowest figure is considered as maximum.

TABLE 2b: Quarterly survey of manufacturing industry

Capacity utilisation in manufacturing industry (%) (s.a.) ^(a)												
	Since 01/1990				2002				2003			
	Min.		Max.		I	II	III	IV	I	II	III	IV
	Value	Date	Value	Date								
EU	77.9	III-93	85.7	I-90	80.5	81.4	81.0	81.4	81.0	80.7	80.3	80.9
Euro area	77.5	IV-93	85.9	IV-90	81.0	81.5	81.2	81.7	81.3	80.8	80.7	81.2
BE	74.5	III-93	84.8	I-01	79.2	79.6	80.1	79.6	79.3	78.6	77.9	79.0
DK	76.4	II-93	86.1	III-98	81.0	81.5	80.9	81.4	81.4	80.6	80.5	79.8
DE	78.3	III-93	89.5	I-91	81.8	82.4	82.4	82.7	82.3	81.8	81.0	82.9
EL	72.9	IV-97	79.3	II-01	75.4	76.7	79.0	76.8	75.8	77.1	76.8	76.1
ES	71.1	III-93	81.0	III-98	76.3	77.0	76.3	79.3	78.6	78.2	79.5	79.3
FR	78.5	III-94	89.1	IV-00	85.5	85.8	85.3	84.7	85.1	84.9	84.8	84.8
IE	71.6	I-93	83.3	I-96	77.5	76.3	72.8	76.9	74.5	75.1	77.1	73.6
IT	74.3	IV-93	80.2	II-90	76.9	77.3	76.9	78.0	77.5	75.6	76.1	76.1
LU	77.8	IV-96	89.2	I-01	86.9	84.3	83.8	85.3	84.1	85.9	84.8	83.9
NL	80.3	III-93	86.2	II-90	83.5	82.9	82.5	82.8	82.5	81.9	81.0	81.4
AT	79.1	IV-02	85.0	IV-00	80.9	80.6	80.2	79.1	79.7	80.4	79.4	80.3
PT	72.6	IV-93	83.1	II-98	77.9	79.4	79.1	81.2	77.7	78.5	75.8	77.0
FI	80.7	III-03	89.9	III-98	82.0	82.7	83.0	83.1	82.2	82.8	80.7	82.0
SE	82.2	III-01	88.5	IV-00	83.3	83.8	82.3	82.9	82.6	84.9	82.9	83.8
UK	77.4	I-93	85.4	II-95	77.6	79.5	79.4	79.4	78.4	78.9	77.9	77.5

Production capacity in manufacturing industry ^{(a)(b)(c)}												
	Since 01/1990				2002				2003			
	Min.		Max.		I	II	III	IV	I	II	IV	IV
	Value	Date	Value	Date								
EU	4	I-90	38	III-93	25	23	23	25	23	21	27	26
Euro area	2	I-90	38	III-93	23	23	23	23	21	22	25	25
BE	10	II-90	54	III-93	34	32	31	34	33	37	40	35
DK	-5	I-98	33	II-93	23	17	22	25	28	23	25	26
DE	-6	IV-90	42	II-93	29	30	26	24	28	28	31	28
EL	0	II-00	21	II-94	12	10	5	11	9	14	13	12
ES	-2	II-00	20	II-93	5	8	14	10	5	4	6	9
FR	-13	III-00	46	IV-93	17	12	13	16	14	14	20	22
IE	-4	III-00	29	III-93	17	22	23	16	18	20	22	27
IT	12	I-90	43	III-96	28	28	29	36	28	26	26	32
LU	-12	I-98	57	IV-96	24	20	31	33	33	37	23	33
NL	-3	I-01	16	III-93	8	7	8	8	9	7	10	8
AT	0	III-00	22	III-03	21	21	18	19	19	20	22	17
PT	1	III-00	40	IV-93	10	9	12	14	17	22	24	28
FI	-21	II-95	81	IV-91	42	34	37	36	34	40	44	33
SE	-19	III-00	30	IV-01	24	15	10	17	21	6	27	18
UK	10	II-95	55	III-91	42	35	35	35	44	36	41	41

Estimated number of months' production assured by orders on hand in manufacturing industry (s.a.) ^(a)												
	Since 01/1990				2002				2003			
	Min.		Max.		I	II	III	IV	I	II	IV	IV
	Value	Date	Value	Date								
EU	2.8	IV-93	3.6	II-90	3.2	3.1	3.1	3.1	3.1	3.3	3.1	3.1
Euro area	2.7	IV-93	3.5	IV-90	3.3	3.2	3.2	3.2	3.2	3.4	3.2	3.2
BE	2.8	IV-03	4.2	III-90	2.9	3.0	3.0	2.9	2.9	2.9	2.8	2.8
DK	1.4	III-03	2.5	III-90	1.6	1.6	1.5	1.6	1.5	1.4	1.4	1.5
DE	2.4	IV-93	3.3	I-91	2.7	2.8	2.7	2.7	2.8	2.8	2.7	2.8
EL	4.8	I-00	6.6	III-90	4.9	5.2	5.4	5.8	5.1	5.3	5.1	5.2
ES	1.5	II-93	3.7	II-03	2.3	3.0	2.6	3.4	3.4	3.7	3.5	3.4
FR	2.5	IV-99	4.4	I-02	4.4	3.5	3.6	3.2	3.2	4.2	3.6	3.2
IE	1.6	IV-93	2.9	III-00	2.6	2.3	2.5	2.5	2.3	2.8	2.6	2.7
IT	3.7	II-95	4.9	II-00	3.8	3.8	4.3	4.1	4.5	3.8	3.8	3.9
LU	1.9	IV-93	3.3	I-02	3.3	3.0	3.1	3.0	3.2	2.9	2.7	2.8
NL	2.1	I-95	3.3	I-91	2.6	2.6	2.6	2.6	2.6	2.6	2.6	2.6
AT	2.9	I-01	5.9	IV-01	5.5	3.8	3.9	3.5	3.8	3.7	3.7	3.5
PT	2.7	IV-03	5.4	I-01	3.5	3.6	3.8	3.9	3.0	3.3	3.4	2.7
FI	2.6	I-02	4.3	III-98	2.6	3.4	3.0	2.7	2.7	2.8	3.0	2.9
SE	1.8	IV-96	3.1	III-00	2.0	1.9	1.9	1.9	2.1	2.0	2.0	2.6
UK	2.4	I-95	3.8	I-99	2.8	2.6	3.0	3.3	2.8	3.6	3.0	3.1

TABLE 2b (continued): Quarterly survey of manufacturing industry

New orders in manufacturing industry (s.a.) ^{(a)(c)}												
	Since 01/1990				2002				2003			
	Min.		Max.		I	II	III	IV	I	II	III	IV
	Value	Date	Value	Date								
EU	-18	IV-92	22	I-95	-16	-5	-3	-8	-6	-10	-9	-2
Euro area	-20	II-93	20	I-95	-16	-3	-3	-7	-5	-9	-8	-1
BE	-24	I-96	20	IV-97	-13	0	-2	-3	-17	-17	-14	0
DK	-23	I-99	37	III-94	-16	6	-2	-3	-2	-14	-15	3
DE	-31	I-02	19	II-97	-31	-1	-4	-4	-11	-6	-9	6
EL	-5	II-03	23	II-98	12	11	17	8	11	-5	13	8
ES	-8	III-93	13	II-03	4	-2	0	13	3	13	8	6
FR	-45	III-93	32	IV-00	-20	-7	-11	-21	-9	-18	-15	-14
IE	-18	I-03	28	III-95	-11	-17	-18	-1	-18	-17	-15	9
IT	-22	III-96	28	I-95	0	-3	4	-14	10	-13	-1	-8
LU	-48	I-93	32	I-00	-39	-21	-20	-5	-7	-1	-6	-3
NL	-12	II-03	19	IV-99	1	3	2	-1	3	-12	-6	2
AT	-30	II-96	28	II-00	-22	-11	-3	-2	0	-3	-3	8
PT	-37	III-93	23	IV-94	-12	-17	-16	-25	-29	-36	-25	-17
FI	-30	III-01	49	I-00	-3	-2	28	17	21	1	-11	19
SE	-37	I-91	48	II-00	-9	1	8	-12	-1	1	-13	2
UK	-46	III-91	29	I-95	-17	-17	-11	-13	-14	-20	-17	-15

Export volume expectations in manufacturing industry (s.a.) ^{(a)(c)}												
	Since 01/1990				2002				2003			
	Min.		Max.		I	II	III	IV	I	II	III	IV
	Value	Date	Value	Date								
EU	-13	IV-01	22	I-95	-7	6	5	5	3	-2	-1	8
Euro area	-10	III-93	21	I-95	-5	6	5	4	5	-2	-1	8
BE	-26	I-96	35	IV-97	-11	7	5	-6	-22	-19	-16	2
DK	-2	II-01	24	IV-00	9	12	15	16	9	2	4	9
DE	-16	IV-92	17	I-95	-5	7	6	7	4	2	-1	11
EL	6	III-03	41	IV-97	23	23	35	19	17	20	6	22
ES	-8	II-93	12	II-00	6	1	4	1	1	0	9	-2
FR	-34	III-93	28	IV-97	-20	-1	0	-8	7	-12	-7	4
IE	-33	IV-01	44	III-95	-1	-13	-29	11	13	-12	-1	-6
IT	-6	III-96	31	I-95	5	15	11	15	16	10	6	17
LU	-58	III-91	41	II-00	-30	-23	-20	-13	11	-18	-1	-14
NL	-11	III-03	22	III-00	3	6	7	2	-2	-2	-11	-1
AT	-8	IV-01	15	IV-03	1	9	6	8	5	3	3	15
PT	-24	III-93	30	IV-94	0	4	1	-3	-8	-11	-7	1
FI	-21	I-03	44	II-02	9	44	15	23	-21	-3	13	15
SE	-21	IV-01	44	II-00	7	19	14	2	15	19	0	26
UK	-34	IV-01	30	III-95	-29	0	-2	11	-9	-11	-3	1

(a) Data collected in January, April, July and October each year.

(b) Answers to the questions whether, taking into account the level of order-books or production, capacity is more than sufficient (+), sufficient (=) or less than sufficient (-). Thus, negative balances (capacity less than sufficient) indicate high levels of capacity utilisation, whereas positive balances (capacity more than sufficient) are associated with low levels of capacity utilisation.

(c) Balances: i.e., differences between the percentages of respondents giving positive and negative replies.

TABLE 2c: Capacity utilisation by industrial branch ^(a) (s.a.)
Degree of capacity utilisation in %

		Since 01/1990				2002				2003			
		Min.		Max.		I	II	III	IV	I	II	III	IV
		Value	Date	Value	Date								
CONSUMER GOODS ^(b)	EU	78.0	III-03	85.9	II-90	78.3	79.4	78.2	78.7	79.8	78.3	78	78.1
	Euro area	77.4	IV-93	85.4	II-90	78.9	79.0	77.7	78.2	79.6	78.3	77.8	78.5
INVESTMENT GOODS ^(b)	EU	76.3	IV-93	87.3	II-98	82.8	82.5	82.0	82.6	81.1	82.2	82.1	82.8
	Euro area	76.2	III-93	88.1	I-01	83.4	83.4	82.6	83.4	81.9	82.9	82.6	83.5
INTERMEDIATE GOODS ^(b)	EU	77.4	I-93	85.9	I-90	80.0	80.8	81.5	81.3	80.8	80.5	79.8	80.9
	Euro area	77.5	III-93	86.4	I-90	80.4	81.0	81.8	81.5	81.1	80.5	80.3	81.1
FOOD AND BEVERAGES	EU	77.2	III-99	82.7	II-91	78.2	78.9	78.6	80.5	80.3	78.3	78	78.7
	Euro area	76.0	II-94	82	II-91	76.7	78.2	78.0	79.4	79.6	76.5	76.9	78.1
TEXTILES	EU	76.6	III-02	84.3	I-90	78.4	77.5	76.6	78.4	78.1	78.4	77.4	76.9
	Euro area	75.9	II-93	84.7	I-90	78.3	77.3	77.2	78.1	78.1	78.3	77.1	76.6
WOOD AND WOOD PRODUCTS	EU	76.5	II-92	84.6	II-95	78.8	78.7	78.6	80	79.5	78.1	77.7	80.6
	Euro area	76.5	II-92	84.8	IV-90	77.8	77.9	78.3	80	79.6	77.3	77.1	80.2
PRINTING AND PUBLISHING	EU	77.3	III-03	85.6	III-90	81.4	80.9	80.0	80.9	79.4	79.3	77.3	78.6
	Euro area	77.4	II-93	86.1	I-91	82.2	80.7	80.0	80.8	78.5	80.4	77.6	79.5
NON-METALLIC MINERAL PRODUCTS	EU	76.2	III-93	84.2	II-90	78.1	79.7	78.6	79.1	78.5	78.5	78.9	79.6
	Euro area	76.2	IV-93	85.2	II-90	78.7	79.4	77.7	79.5	78.7	77.6	78.6	79.5
BASIC METALS	EU	73.7	IV-93	88.3	IV-97	83.4	84.0	85.8	87.4	86.7	85.3	84.3	84
	Euro area	73.3	I-93	89.3	IV-00	84.2	84.6	86.7	88	87.3	85.3	84.9	83.8
METAL PRODUCTS	EU	74.3	IV-93	85.4	I-90	79.0	78.7	77.8	78.3	78.1	77.6	77.2	78.9
	Euro area	72.9	I-94	85.3	I-90	79.0	78.4	77.7	78.3	78.2	77.7	77.5	79
MACHINERY AND EQUIPMENT	EU	76.9	IV-93	88.7	II-90	81.9	81.3	80.5	81.6	80.8	80.1	80.3	80.3
	Euro area	76.1	IV-93	89.5	II-90	82.3	81.9	81.3	82.3	81.5	80.8	80.8	81.2
MEDICAL AND OPTICAL INSTRUMENTS	EU	79.4	I-94	88.1	I-01	84.2	82.6	82.1	84.1	81.5	83.5	82.7	82.1
	Euro area	80.0	II-93	89	I-01	85.2	83.5	81.4	84.3	81.8	84	82.9	82.6
MOTOR VEH., TRAILERS AND SEMI-TRAILERS	EU	73.6	IV-93	90.9	II-90	86.0	87.8	87.4	88.3	86.5	86.8	85.2	87.8
	Euro area	74.4	IV-93	92.9	I-01	87.1	88.6	88.5	89.8	87.9	88.2	87.3	88.2

(a) Data collected in January, April, July and October each year.

(b) The three major groups do not cover all industrial sectors.

TABLE 2d: Export volume expectations by industrial branch ^(a) (s.a.)

Balances: i.e., differences between the percentages of respondents giving positive and negative replies

		Since 01/1990				2002				2003			
		Min.		Max.		I	II	III	IV	I	II	III	IV
		Value	Date	Value	Date								
CONSUMER GOODS ^(b)	EU	-8	I-02	19	IV-00	-8	0	2	2	0	0	-3	7
	Euro area	-8	III-93	21	IV-00	1	1	1	3	4	-3	-1	7
INVESTMENT GOODS ^(b)	EU	-20	IV-01	22	I-95	-12	5	5	1	-1	-3	-2	12
	Euro area	-20	IV-92	26	III-97	-6	10	5	4	5	-1	1	15
INTERMEDIATE GOODS ^(b)	EU	-16	IV-01	24	IV-94	-6	6	5	6	0	-3	-2	5
	Euro area	-14	IV-01	21	I-95	-4	5	5	3	2	-5	-5	6
FOOD AND BEVERAGES	EU	-4	IV-98	20	I-95	2	-1	1	7	8	2	1	3
	Euro area	-2	II-93	22	I-95	9	-1	6	5	8	6	0	4
TEXTILES	EU	-27	IV-01	18	I-00	-15	5	-5	-4	-5	-7	-10	5
	Euro area	-25	IV-01	21	I-00	-14	9	-3	-2	0	-3	-7	7
WOOD AND WOOD PRODUCTS	EU	-11	IV-90	22	IV-94	0	5	-2	1	-6	-6	-2	2
	Euro area	-11	II-96	19	IV-94	-1	2	1	5	-2	-9	-3	3
PRINTING AND PUBLISHING	EU	-12	III-94	13	IV-94	-8	-7	-3	-3	-7	-5	4	-5
	Euro area	-13	IV-93	18	I-91	0	-10	-6	0	-4	-6	1	-4
NON-METALLIC MINERAL PRODUCTS	EU	-15	IV-01	20	IV-94	-8	-1	-3	1	-5	-11	-2	5
	Euro area	-10	IV-98	18	IV-94	-4	1	1	0	-2	-8	-3	9
BASIC METALS	EU	-27	IV-01	26	III-94	-9	7	14	6	2	-3	-12	5
	Euro area	-26	IV-01	24	III-94	-8	5	15	2	0	-13	-17	2
METAL PRODUCTS	EU	-14	IV-01	21	I-95	-9	3	4	4	-2	-5	-2	5
	Euro area	-16	I-93	19	I-95	-6	5	3	3	-1	-4	-2	2
MACHINERY AND EQUIPMENT	EU	-18	IV-01	25	I-95	-12	3	7	7	0	-5	-4	10
	Euro area	-14	I-91	25	I-95	-10	3	5	7	2	-3	-3	8
MEDICAL AND OPTICAL INSTRUMENTS	EU	-17	IV-01	29	I-00	1	17	14	20	5	13	4	16
	Euro area	-19	III-93	31	IV-95	3	15	6	13	4	9	5	10
MOTOR VEH., TRAILERS AND SEMI-TRAILERS	EU	-37	III-93	31	II-98	-7	20	5	12	10	2	-4	7
	Euro area	-41	III-93	39	II-98	-7	24	8	11	5	6	0	15

(a) Data collected in January, April, July and October each year.

(b) The three major groups do not cover all industrial sectors.

TABLE 3: Consumer opinion on economic and financial conditions (s.a.)^{(a)(b)}

		Since 01/1990		2002		2003											
		Min.		Max.		Nov.	Dec.	Jan.	Feb.	Mar.	Apr.	May	June	July	Aug.	Sep.	Oct.
		Value	Date	Value	Date												
CONSUMER CONFIDENCE INDICATOR	EU	-27	07-93	3	08-00	-11	-14	-15	-17	-19	-16	-16	-15	-14	-14	-14	
	Euro area	-29	08-93	3	04-00	-14	-16	-18	-19	-21	-19	-20	-19	-18	-17	-17	
	BE	-27	08-93	17	12-00	-2	-7	-11	-14	-18	-11	-11	-11	-12	-11	-5	-13
	DK	-11	10-90	17	12-97	10	5	8	4	1	1	4	4	0	3	2	3
	DE	-28	10-93	6	08-00	-17	-20	-19	-19	-21	-20	-23	-20	-18	-18	-19	-17
	EL	-44	07-03	-6	04-00	-30	-32	-36	-37	-40	-38	-39	-44	-44	-40	-40	-39
	ES	-37	10-92	6	03-00	-12	-16	-16	-17	-18	-16	-14	-11	-14	-12	-11	-12
	FR	-34	08-93	4	01-01	-18	-17	-20	-26	-30	-27	-26	-25	-24	-23	-23	-24
	IE	-31	03-93	19	01-00	-13	-17	-17	-17	-17	-17	-18	-18	-18	-18	-18	-12
	IT	-38	04-93	2	06-01	-12	-17	-16	-13	-14	-14	-14	-15	-16	-14	-12	-14
	LU⁽ⁿ⁾	-5	11-02	14	02-02	-5	-1	0	-1	-3	-2	1	-1	2	2	4	1
	NL	-20	07-93	31	04-00	-6	-8	-15	-16	-17	-19	-15	-14	-19	-12	-14	-15
	AT	-16	04-96	11	08-00	7	7	2	2	-5	-5	-7	-8	-7	-5	-2	-1
	PT	-48	03-03	-1	07-91	-40	-41	-44	-48	-48	-47	-45	-42	-41	-41	-39	-37
	FI	6	11-01	23	02-00	13	11	12	10	10	11	9	8	10	11	14	15
	SE	-10	09-96	24	08-00	10	10	7	6	3	4	4	2	5	6	8	6
	UK	-28	10-92	7	04-98	-1	-6	-9	-10	-11	-8	-6	-6	-6	-6	-3	-3
FINANCIAL SITUATION OF HOUSEHOLDS OVER NEXT 12 MONTHS	EU	-10	12-93	5	04-01	0	-1	-2	-2	-3	-2	-1	-1	-1	-2	-1	-2
	Euro area	-11	08-93	5	03-00	-4	-4	-5	-5	-6	-5	-4	-4	-4	-4	-4	-5
	BE	-9	12-93	13	08-00	4	5	2	1	-1	4	4	4	3	1	4	3
	DK	2	12-90	39	10-00	14	16	15	10	15	14	16	19	12	14	13	8
	DE	-15	02-94	4	05-00	-10	-10	-9	-10	-11	-9	-8	-7	-6	-7	-7	-6
	EL	-31	08-92	10	04-00	-13	-16	-20	-20	-23	-21	-20	-27	-26	-23	-25	-25
	ES	-16	12-92	10	10-99	0	-4	-3	-4	-4	-2	0	0	-1	0	1	-3
	FR	-12	12-95	6	01-01	0	1	-1	-1	-3	-3	-2	-2	-2	-2	-2	-3
	IE	-13	02-93	16	01-00	-3	-10	-9	-9	-11	-6	-10	-10	-8	-6	-7	-8
	IT	-15	04-93	7	07-01	-1	-1	-1	-1	-1	-2	-2	-3	-3	-3	-2	-3
	LU⁽ⁿ⁾	4	10-03	12	06-02	5	8	8	8	4	7	4	4	6	4	6	4
	NL	-7	10-03	16	04-00	3	-2	-4	-3	-2	-4	-1	-4	-5	-4	-6	-7
	AT	-18	04-96	4	08-99	0	2	-2	-2	-7	-5	-8	-6	-5	-5	-3	-2
	PT	-26	02-03	11	01-92	-20	-21	-23	-26	-25	-25	-23	-19	-21	-21	-20	-16
	FI	-8	04-93	12	10-03	10	10	10	9	9	10	9	10	10	11	12	12
	SE	-13	09-96	18	07-02	14	13	9	11	12	11	12	13	13	14	15	13
	UK	-23	03-90	16	09-02	14	11	10	8	8	10	9	11	11	8	11	8
GENERAL ECONOMIC SITUATION OVER NEXT 12 MONTHS	EU	-32	03-93	1	08-00	-13	-18	-21	-23	-26	-21	-21	-20	-19	-18	-16	-16
	Euro area	-35	03-93	4	04-00	-15	-19	-21	-23	-26	-22	-23	-22	-21	-20	-18	-18
	BE	-46	07-93	20	06-00	0	-8	-19	-20	-27	-12	-7	-10	-12	-10	-1	-9
	DK	-23	02-99	23	07-01	0	-6	-2	-5	-11	-10	-4	-1	-11	-5	-1	3
	DE	-41	03-93	6	02-99	-24	-28	-26	-27	-29	-26	-31	-26	-22	-23	-23	-21
	EL	-34	09-03	17	05-00	-23	-25	-29	-30	-34	-30	-29	-32	-33	-30	-34	-31
	ES	-38	10-92	11	11-98	-4	-13	-13	-15	-18	-12	-8	-7	-8	-7	-4	-7
	FR	-37	01-91	5	01-01	-14	-14	-18	-25	-31	-27	-28	-28	-27	-26	-26	-25
	IE	-33	01-03	22	01-00	-28	-33	-33	-31	-31	-28	-29	-29	-31	-27	-25	-19
	IT	-40	04-93	13	02-95	-9	-14	-15	-14	-17	-15	-14	-16	-17	-18	-13	-14
	LU⁽ⁿ⁾	-27	02-03	7	06-02	-21	-17	-17	-27	-24	-14	-7	-11	-5	-5	1	-6
	NL	-42	03-93	26	03-00	-16	-20	-32	-32	-35	-34	-27	-25	-32	-18	-20	-20
	AT	-26	04-96	8	11-99	3	2	-6	-3	-11	-12	-16	-16	-14	-12	-4	-1
	PT	-51	03-03	12	01-92	-41	-39	-42	-47	-51	-46	-41	-37	-35	-38	-32	-30
	FI	-24	04-91	28	01-95	4	0	-2	-4	-5	-2	-4	-6	1	2	7	6
	SE	-30	09-96	20	03-00	5	4	-2	-3	-6	-6	-5	-4	0	0	4	2
	UK	-33	03-90	13	06-97	-5	-16	-25	-28	-29	-19	-14	-16	-13	-14	-12	-10
UNEMPLOYMENT OVER NEXT 12 MONTHS	EU	-2	12-00	56	03-93	27	31	32	35	38	36	38	37	36	34	34	32
	Euro area	-3	01-01	60	08-93	30	33	36	39	42	40	43	40	39	37	37	36
	BE	-19	12-00	63	10-93	25	37	43	46	51	44	46	45	49	44	36	53
	DK	-19	11-97	38	12-92	4	20	13	20	29	32	25	28	31	28	29	26
	DE	-3	01-01	58	11-93	31	35	38	37	39	39	49	44	44	41	45	42
	EL	24	04-00	62	12-98	38	39	44	44	46	44	59	61	60	52	50	48
	ES	-7	04-00	67	01-93	23	22	22	23	23	19	14	11	13	12	9	7
	FR	-14	01-01	64	03-03	38	36	43	57	64	57	54	53	48	46	44	43
	IE	-29	12-99	58	04-92	40	41	42	45	41	46	45	45	48	50	47	38
	IT	-2	06-01	70	04-93	16	26	23	17	19	20	21	19	19	17	16	15
	LU⁽ⁿ⁾	14	06-02	46	03-03	43	46	43	41	46	46	41	38	33	36	32	37
	NL	-35	07-98	77	03-93	46	48	54	62	66	70	66	64	74	62	65	61
	AT	-9	11-00	49	12-96	22	19	25	24	32	35	36	38	31	32	27	27
	PT	-10	10-97	73	10-93	58	58	61	68	70	69	66	61	58	57	57	54
	FI	-31	01-95	42	07-91	9	11	11	11	9	10	16	21	18	17	14	12
	SE	-26	08-00	38	11-01	8	8	10	12	18	17	20	28	23	19	18	20
	UK	-11	04-98	53	12-92	16	22	19	19	21	18	22	26	24	24	21	20

TABLE 3 (continued): Consumer opinion on economic and financial conditions (s.a.)^(a)

		Since 01/1990				2002				2003							
		Min.		Max.													
		Value	Date	Value	Date	Nov.	Dec.	Jan.	Feb.	Mar.	Apr.	May	June	July	Aug.	Sep.	Oct.
SAVINGS	EU	-14	02-94	5	03-01	-4	-5	-6	-6	-7	-6	-5	-4	-5	-3	-3	-5
OVER NEXT	Euro area	-14	08-93	4	04-01	-7	-9	-9	-9	-9	-9	-9	-8	-9	-7	-8	-9
12 MONTHS	BE	-2	12-93	31	06-98	12	11	18	10	7	9	7	9	9	12	7	
	DK	-3	08-90	36	05-98	28	31	30	30	27	30	29	27	29	29	26	27
Component of the	DE	-5	05-03	23	12-90	-2	-5	-4	-2	-5	-5	-5	-4	-1	1	-1	1
consumer confidence	EL	-57	07-03	-23	01-00	-47	-49	-52	-55	-55	-55	-49	-55	-57	-54	-50	-52
indicator	ES	-34	01-90	0	07-00	-22	-25	-24	-27	-25	-29	-30	-27	-32	-29	-30	-32
	FR	-36	03-96	-10	01-01	-20	-17	-18	-21	-20	-19	-19	-15	-17	-18	-20	-23
	IE	-32	03-93	28	02-02	21	16	15	17	15	14	14	13	16	10	8	16
	IT	-27	01-94	2	03-91	-21	-26	-26	-21	-20	-17	-18	-22	-24	-19	-18	-22
	LU⁽ⁿ⁾	40	07-03	58	04-02	41	51	54	55	53	47	47	41	40	44	41	45
	NL	26	07-90	55	10-99	37	37	31	32	34	33	34	37	37	35	34	30
	AT	-11	11-00	55	03-02	46	42	40	37	29	32	31	28	22	28	25	25
	PT	-50	02-03	-14	01-92	-42	-47	-49	-50	-45	-49	-49	-49	-49	-49	-47	-47
	FI	19	01-96	52	10-03	46	44	49	47	46	44	46	47	47	49	51	52
	SE	11	06-98	46	06-00	30	30	29	27	22	28	29	28	29	29	30	30
	UK	-26	10-92	10	10-03	4	2	-2	0	-2	-3	4	9	4	6	10	10
FINANCIAL	EU	-19	02-94	-1	03-01	-13	-14	-15	-15	-15	-14	-14	-13	-12	-13	-12	-14
SITUATION	Euro area	-20	03-03	-1	08-90	-18	-19	-19	-20	-20	-19	-17	-16	-15	-17	-16	-17
OF HOUSEHOLDS	BE	-16	12-93	3	11-00	-9	-8	-8	-9	-10	-10	-10	-8	-8	-10	-8	-7
OVER LAST	DK	-5	04-01	13	01-98	4	6	7	5	5	6	7	7	7	6	4	4
12 MONTHS	DE	-31	12-02	4	08-90	-30	-31	-29	-30	-29	-28	-22	-19	-17	-20	-19	-18
	EL	-43	01-93	-6	04-00	-23	-25	-27	-28	-31	-31	-30	-34	-34	-33	-38	-36
	ES	-28	01-94	4	04-00	-9	-13	-14	-13	-13	-9	-11	-9	-9	-10	-8	-13
	FR	-18	06-96	-2	04-01	-8	-8	-9	-10	-10	-10	-9	-10	-10	-10	-9	-11
	IE	-25	03-93	11	04-00	-8	-18	-19	-15	-16	-16	-18	-19	-18	-14	-14	-14
	IT	-24	01-94	-1	06-90	-15	-17	-21	-21	-21	-21	-22	-23	-22	-22	-22	-23
	LU⁽ⁿ⁾	-1	05-02	9	01-02	3	0	-1	4	2	2	2	-1	2	0	4	2
	NL	-21	10-03	17	04-00	-13	-12	-17	-19	-16	-17	-19	-19	-18	-21	-19	-21
	AT	-23	11-02	-2	08-99	-23	-17	-18	-19	-21	-21	-21	-19	-18	-21	-19	-18
	PT	-29	04-03	3	01-92	-22	-24	-26	-27	-27	-29	-26	-25	-25	-26	-23	-23
	FI	-22	04-93	9	02-01	5	5	5	3	4	4	4	5	6	5	5	7
	SE	-13	11-95	10	06-00	4	2	2	2	-2	1	1	3	3	3	6	4
	UK	-32	05-90	7	06-02	5	5	3	2	2	4	-4	-1	0	-1	0	-4
GENERAL	EU	-55	03-93	-4	05-00	-35	-40	-43	-44	-46	-43	-45	-44	-42	-42	-40	-41
ECONOMIC	Euro area	-58	07-93	-2	05-00	-40	-45	-48	-47	-49	-47	-50	-47	-47	-47	-45	-46
SITUATION	BE	-61	08-93	22	12-00	-29	-32	-44	-43	-51	-43	-45	-44	-48	-45	-38	-42
OVER LAST	DK	-25	04-93	22	09-95	-6	-8	-5	-10	-14	-13	-12	-13	-10	-7	-10	-7
12 MONTHS	DE	-60	05-03	12	07-90	-52	-59	-58	-57	-58	-54	-60	-56	-52	-52	-51	-50
	EL	-50	05-90	6	05-00	-33	-32	-37	-35	-41	-41	-40	-43	-42	-36	-47	-43
	ES	-60	01-94	13	03-00	-16	-25	-26	-26	-27	-20	-21	-16	-19	-19	-14	-19
	FR	-57	10-96	-1	01-01	-30	-31	-39	-38	-45	-44	-44	-44	-46	-46	-47	-50
	IE	-59	03-93	42	08-99	-44	-48	-51	-49	-50	-51	-54	-53	-51	-48	-46	-39
	IT	-74	04-93	-8	05-90	-42	-50	-51	-48	-51	-51	-52	-51	-46	-51	-47	-52
	LU⁽ⁿ⁾	-35	03-03	-5	06-02	-34	-33	-32	-33	-35	-32	-34	-32	-30	-29	-26	-30
	NL	-73	03-03	45	03-00	-60	-59	-68	-70	-73	-71	-68	-67	-72	-65	-67	-67
	AT	-50	02-97	8	07-00	-37	-36	-42	-43	-41	-43	-43	-44	-44	-45	-37	-34
	PT	-60	02-03	13	01-92	-54	-54	-56	-60	-59	-59	-58	-56	-55	-55	-51	-52
	FI	-65	01-92	30	08-98	-6	-7	-6	-10	-11	-12	-13	-16	-12	-7	-4	-3
	SE	-25	05-03	25	03-00	-18	-16	-19	-17	-24	-25	-25	-23	-17	-13	-9	-14
	UK	-67	11-92	5	10-97	-17	-23	-29	-33	-33	-28	-32	-32	-27	-28	-25	-24
SAVINGS	EU	25	09-03	42	04-91	31	32	30	29	28	28	27	26	25	25	25	26
AT PRESENT	Euro area	30	09-03	46	05-01	40	41	39	37	37	38	33	31	30	31	30	31
	BE^(e)	-38	10-03	70	02-01	61	61	61	59	58	53	-21	-24	-28	-38	-35	-38
	DK	51	01-90	78	07-92	68	69	71	71	71	71	65	58	65	70	70	72
	DE	28	11-92	61	09-02	52	56	53	52	53	54	48	44	43	45	46	46
	EL	-63	10-01	-18	01-00	-51	-57	-58	-60	-60	-60	-53	-58	-62	-56	-57	-60
	ES	-30	09-03	58	08-96	-6	-21	-18	-17	-22	-21	-24	-21	-30	-26	-30	-29
	FR	31	08-98	61	06-95	47	49	49	47	45	46	50	49	49	47	46	47
	IE	-2	03-93	56	12-01	41	34	28	26	14	17	14	14	14	13	21	28
	IT	30	06-99	59	06-96	41	44	42	36	38	40	37	33	41	40	38	40
	LU⁽ⁿ⁾	42	08-03	62	01-03	56	58	62	50	47	46	52	50	45	42	46	51
	NL	47	06-91	70	09-96	64	66	60	64	67	65	65	67	63	66	60	63
	AT	17	01-97	64	09-02	54	59	54	50	53	52	54	55	46	48	49	51
	PT	-60	08-03	-13	01-92	-52	-56	-59	-59	-56	-57	-59	-60	-60	-60	-58	-56
	FI	-23	04-94	22	10-92	16	14	14	12	11	11	11	12	10	10	10	12
	SE	-9	11-01	20	02-00	-5	-2	-6	-8	-7	-4	-4	-7	-3	-2	1	-2
	UK	-16	03-03	36	05-90	-10	-8	-9	-12	-16	-15	-2	-1	-2	-5	-2	0

TABLE 3 (continued): Consumer opinion on economic and financial conditions (s.a.)^(a)

		Since 01/1990		2002						2003								
		Min.		Max.		Nov.	Dec.	Jan.	Feb.	Mar.	Apr.	May	June	July	Aug.	Sep.	Oct.	
		Value	Date	Value	Date													
MAJOR PURCHASES OVER NEXT 12 MONTHS	EU	-20	02-94	-10	03-00	-18	-18	-18	-18	-17	-17	-18	-16	-17	-17	-17	-17	
	Euro area	-21	01-03	-12	03-00	-20	-21	-21	-20	-20	-19	-20	-20	-17	-18	-18	-19	-18
	BE	-29	10-96	-6	10-03	-11	-15	-16	-13	-15	-16	-12	-9	-12	-12	-10	-6	-6
	DK	-14	01-93	-1	11-95	-7	-3	-5	-5	-8	-6	-9	-6	-8	-4	-6	-4	-4
	DE	-39	02-03	-14	04-90	-38	-38	-36	-39	-36	-35	-36	-33	-33	-34	-35	-35	-35
	EL	-50	11-92	5	06-03	-5	-4	-1	-1	-4	-1	-2	5	1	4	-3	4	4
	ES	-48	11-93	-7	11-00	-24	-22	-23	-20	-21	-21	-20	-19	-17	-20	-22	-19	-19
	FR	-1	10-03	1	04-03	0	0	0	0	1	1	0	0	0	0	0	0	-1
	IE	-20	05-93	2	04-02	-6	-11	-6	-8	-5	-6	-6	-1	-9	-7	-5	-6	-6
	IT	-23	03-95	-11	03-00	-15	-19	-22	-17	-17	-17	-18	-13	-16	-16	-15	-15	-15
	LU⁽ⁿ⁾	-19	08-03	-5	01-02	-7	-6	-16	-11	-10	-8	-17	-13	-17	-19	-14	-16	-16
	NL	-24	03-03	-4	11-98	-20	-18	-22	-18	-24	-20	-17	-16	-18	-20	-15	-19	-19
	AT	-26	05-03	-4	11-00	-22	-22	-22	-19	-20	-20	-26	-24	-20	-24	-22	-22	-22
	PT	-23	12-96	14	06-90	-8	-13	-15	-16	-14	-16	-13	-14	-18	-16	-15	-16	-16
	FI	-12	04-96	-4	01-00	-8	-7	-7	-9	-6	-8	-6	-6	-6	-7	-6	-8	-8
	SE	-12	11-95	7	09-96	-4	-4	-3	-2	-6	-5	-6	-5	-5	-3	-3	-4	-4
	UK	-26	11-92	1	03-00	-8	-7	-8	-10	-8	-7	-14	-13	-16	-16	-13	-16	-16
MAJOR PURCHASES AT PRESENT	EU	-22	12-95	7	01-00	-16	-17	-16	-18	-20	-19	-18	-16	-15	-16	-15	-15	
	Euro area	-28	03-03	6	03-99	-26	-26	-24	-25	-28	-27	-26	-23	-24	-24	-23	-23	
	BE	-40	06-97	26	12-00	1	6	-5	-2	-4	1	1	0	3	2	6	4	
	DK	-27	01-93	9	09-97	-8	0	2	-4	-2	-6	-7	-10	-3	-4	-12	-11	
	DE	-31	11-02	5	04-99	-31	-27	-22	-23	-21	-23	-24	-19	-22	-21	-19	-18	
	EL	-67	01-03	-10	01-01	-50	-53	-67	-61	-60	-58	-46	-48	-37	-30	-30	-30	
	ES	-64	06-93	26	11-99	-18	-27	-26	-23	-28	-25	-28	-25	-21	-28	-23	-24	
	FR	-39	12-95	14	07-00	-11	-11	-10	-16	-26	-22	-17	-16	-13	-14	-16	-17	
	IE	-22	04-92	40	09-97	3	1	1	-2	0	4	-3	0	-1	4	4	6	
	IT	-64	11-96	-2	05-90	-52	-49	-52	-51	-51	-49	-50	-48	-50	-52	-47	-50	
	LU⁽ⁿ⁾	-19	05-03	-4	03-02	-13	-11	-11	-12	-9	-11	-19	-7	-10	-8	-10	-9	
	NL	-39	04-03	54	02-00	-35	-36	-30	-32	-39	-39	-34	-37	-37	-36	-38	-35	
	AT	-14	07-02	29	08-99	-5	-7	-1	-1	-2	-7	-13	-13	-11	-13	-10	-8	
	PT	-58	12-02	-1	01-92	-50	-58	-55	-52	-51	-54	-51	-48	-49	-51	-49	-48	
	FI	-27	04-90	39	08-03	8	10	30	26	28	32	34	33	32	39	35	35	
	SE	1	11-95	29	08-00	11	9	13	9	6	8	10	16	20	19	23	20	
	UK	-22	05-90	28	11-02	28	22	16	11	13	13	14	13	18	16	14	19	
PRICE TRENDS OVER NEXT 12 MONTHS	EU	5	06-03	49	01-91	11	11	13	15	19	14	7	5	7	8	7	7	
	Euro area	3	06-03	51	01-91	9	9	11	12	16	12	5	3	5	7	6	5	
	BE	-4	09-02	46	10-01	0	1	6	8	13	8	2	-3	0	7	0	1	
	DK	-29	08-93	28	08-02	15	15	10	17	16	15	10	4	5	3	-3	-2	
	DE	8	06-03	58	07-91	16	12	14	18	19	16	11	8	9	13	15	9	
	EL	7	10-03	60	05-90	17	22	32	37	38	35	11	7	18	21	10	7	
	ES	-4	11-98	36	01-02	30	24	25	27	25	22	8	5	10	7	6	7	
	FR	-13	08-97	54	01-91	-2	2	3	15	28	16	11	12	13	12	11	14	
	IE	6	01-94	42	10-00	11	18	16	18	15	12	11	13	14	14	17	16	
	IT	-19	10-03	62	02-91	7	9	5	-6	-9	-8	-17	-18	-17	-16	-18	-19	
	LU⁽ⁿ⁾	-5	06-03	30	03-03	11	7	12	25	30	21	0	-5	9	11	12	13	
	NL	-27	12-02	60	01-91	-25	-27	-16	-15	-7	-1	-7	-7	-10	-11	-7	-6	
	AT	-19	01-96	41	09-01	6	7	10	14	22	13	12	8	7	23	15	21	
	PT	-9	08-97	56	03-03	50	49	48	49	56	49	41	38	38	38	37	38	
	FI	-21	12-95	40	09-01	-2	3	11	10	9	-2	2	0	2	2	3	8	
	SE	-10	03-99	33	04-03	28	30	32	32	32	33	29	23	30	31	27	19	
	UK	11	09-03	57	09-90	18	20	25	27	29	22	11	11	12	11	11	17	
PRICE TRENDS OVER LAST 12 MONTHS	EU	-5	03-99	47	01-03	45	46	47	43	43	41	39	36	36	37	35	39	
	Euro area	-4	02-99	62	01-03	59	61	62	57	57	54	51	47	47	49	46	49	
	BE	-1	06-98	49	08-03	48	47	44	45	45	46	46	39	42	49	45	46	
	DK	-51	09-93	-1	03-90	-16	-15	-16	-15	-20	-16	-21	-23	-29	-23	-23	-22	
	DE	-2	03-99	74	08-02	71	72	69	61	60	56	46	39	39	42	37	40	
	EL	5	06-99	76	08-03	45	49	53	56	57	57	68	69	74	76	72	74	
	ES	-5	06-97	65	03-03	61	60	63	63	65	58	55	52	59	54	56	58	
	FR	-23	01-99	52	01-03	46	46	52	47	45	44	43	41	43	43	42	46	
	IE	-3	07-97	66	01-03	63	66	66	63	65	62	61	62	59	55	59	55	
	IT	0	07-97	70	01-03	56	62	70	66	67	67	68	66	63	64	63	68	
	LU⁽ⁿ⁾	20	01-02	45	09-03	38	38	38	39	38	33	37	29	39	45	45	44	
	NL	-3	04-90	89	12-02	87	89	88	81	76	73	74	71	70	72	70	68	
	AT	-48	02-96	46	01-03	41	43	46	40	40	38	38	30	33	36	33	37	
	PT	-8	10-97	61	10-90	54	51	55	56	60	57	53	53	50	45	46	47	
	FI	-58	12-95	3	04-02	-4	1	-2	-5	-4	-10	-8	-10	-10	-5	-7	-7	
	SE	-38	11-98	-6	10-95	-15	-15	-15	-12	-16	-14	-21	-24	-25	-23	-27	-25	
	UK	-15	11-01	49	10-90	-5	-11	-9	-9	-6	-7	-2	-1	-3	-4	-1	7	

(a) The sum of the replies for each Member State are weighted in the Community total with the value of consumers' expenditure.

(b) The indicator is the arithmetic average of the balances (%) of four questions: the financial situation of households, the general economic situation, unemployment expectations (with inverted sign) and savings, all over the next 12 months.

(c) This question was modified in the Belgian consumer survey in May 2003, in order to bring it into line with the EU harmonised programme. The series prior to and after this date cannot therefore be compared.

(n) Not seasonally adjusted.

TABLE 4: Survey of construction industry ^(a)

Balances: i.e. differences between the percentages of respondents giving positive and negative replies (s.a.)

		Since 01/1990		2002				2003									
		Min.		Max.		Nov.	Dec.	Jan.	Feb.	Mar.	Apr.	May	June	July	Aug.	Sep.	Oct.
		Value	Date	Value	Date												
CONSTRUCTION CONFIDENCE INDICATOR	EU	-42	04-96	4	02-90	-22	-19	-19	-17	-18	-20	-20	-20	-19	-21	-21	-20
	Euro area	-44	08-96	4	03-90	-24	-21	-21	-19	-20	-20	-21	-22	-20	-23	-23	-21
	BE	-35	11-95	10	02-00	-17	-18	-17	-18	-17	-21	-18	-15	-16	-12	-12	-13
	DK	-38	12-91	20	03-98	-19	-20	-20	-16	-23	-25	-24	-22	-19	-15	-18	-17
	DE	-62	11-02	3	01-91	-62	-59	-55	-53	-52	-49	-53	-52	-55	-54	-57	-55
	EL	-51	09-94	33	04-00	16	14	17	11	8	9	6	-3	3	8	14	20
	ES	-57	10-92	42	01-99	3	5	10	16	16	9	10	11	19	4	8	4
	FR	-61	03-93	34	10-00	-10	-6	-10	-8	-8	-9	-10	-12	-11	-11	-10	-7
	IE	-54	09-02	58	06-97	-20	-21	-15	-16	-29	-2	0	-2	12	11	23	27
	IT	-68	10-93	21	05-90	8	9	1	1	3	0	-1	-2	-2	-7	-7	-2
	LU	-74	03-94	24	03-90	-45	-56	-61	-54	-55	-43	-40	-49	-47	-47	-34	-30
	NL	-25	06-03	27	12-00	-17	-14	-13	-19	-21	-24	-25	-25	-22	-21	-20	-23
	AT	-60	04-96	-13	02-03	-38	-38	-27	-13	-27	-24	-21	-26	-21	-21	-24	-25
	PT	-57	02-03	-1	12-97	-49	-50	-51	-57	-50	-47	-45	-42	-52	-42	-47	-46
	FI	-98	09-91	48	06-98	13	11	11	17	0	3	-9	-12	6	-5	1	6
	SE	-83	12-93	25	01-01	-39	-45	-41	-30	-37	-47	-47	-52	-67	-64	-57	-58
UK	-80	06-91	3	09-01	-3	-2	1	-6	-5	-10	-6	-4	2	-4	-4	-3	
ORDER BOOKS Component of the construction confidence indicator	EU	-55	08-93	-2	03-90	-29	-27	-26	-25	-25	-27	-26	-26	-27	-27	-27	
	Euro area	-54	10-93	-3	06-90	-30	-28	-28	-26	-26	-27	-27	-28	-27	-29	-29	-28
	BE	-48	02-96	2	02-00	-25	-27	-26	-27	-29	-29	-29	-26	-23	-22	-21	-22
	DK	-49	12-91	33	03-95	-24	-22	-23	-22	-29	-33	-32	-26	-27	-20	-25	-23
	DE	-71	11-02	-7	03-91	-71	-70	-67	-65	-60	-59	-62	-61	-66	-63	-67	-63
	EL	-77	06-95	16	04-00	-5	-18	-12	-16	-20	-25	-17	-8	-1	-3	-8	-9
	ES	-64	08-93	43	01-90	12	13	21	29	25	20	24	25	32	23	24	8
	FR	-74	09-93	37	10-00	-13	-8	-11	-10	-9	-13	-12	-15	-15	-16	-14	-11
	IE	-61	06-94	68	06-97	-20	-24	-23	-19	-34	-15	-7	-15	-6	-9	0	4
	IT	-84	02-94	17	05-90	-10	-11	-11	-16	-13	-17	-18	-25	-22	-31	-25	-16
	LU	-73	08-93	12	05-00	-47	-58	-58	-56	-64	-57	-56	-61	-58	-65	-47	-44
	NL	-30	09-93	20	09-00	-20	-15	-18	-22	-25	-25	-24	-24	-26	-24	-22	-26
	AT	-64	04-96	-22	11-99	-50	-48	-48	-39	-46	-36	-38	-38	-31	-33	-35	-36
	PT	-79	05-94	-9	12-97	-57	-55	-57	-66	-60	-60	-59	-57	-69	-58	-68	-65
	FI	-99	12-93	38	06-98	9	13	5	15	0	-6	-8	-9	-3	-9	-4	0
	SE	-97	05-97	33	01-90	-51	-57	-52	-39	-36	-38	-53	-41	-65	-61	-64	-66
UK	-87	06-91	-3	03-90	-17	-15	-11	-18	-16	-23	-18	-14	-8	-13	-13	-10	
EMPLOYMENT EXPECTATIONS Component of the construction confidence indicator	EU	-35	04-96	9	02-90	-14	-11	-11	-9	-11	-12	-13	-13	-11	-14	-12	
	Euro area	-38	04-96	11	03-90	-17	-14	-14	-11	-13	-13	-15	-15	-13	-16	-16	-14
	BE	-24	11-95	19	02-90	-9	-9	-8	-8	-5	-13	-6	-3	-8	-1	-2	-3
	DK	-31	09-91	42	03-98	-13	-17	-17	-9	-17	-17	-16	-17	-11	-9	-10	-10
	DE	-59	03-96	19	02-90	-53	-47	-43	-41	-44	-39	-44	-43	-43	-45	-46	-47
	EL	-42	09-94	60	03-99	36	45	45	38	35	42	29	3	7	18	36	48
	ES	-66	03-93	54	01-99	-7	-4	-2	3	7	-2	-5	-3	5	-16	-9	-1
	FR	-51	03-93	31	10-00	-7	-4	-8	-5	-6	-4	-7	-9	-6	-6	-6	-3
	IE	-50	09-02	60	10-00	-20	-18	-7	-12	-23	12	7	12	29	30	46	49
	IT	-60	10-93	28	12-02	25	28	13	18	19	17	17	21	18	18	11	13
	LU	-77	03-94	36	03-90	-42	-54	-63	-52	-46	-28	-23	-36	-35	-28	-20	-16
	NL	-26	05-03	36	12-00	-13	-13	-8	-16	-16	-22	-26	-25	-17	-17	-18	-20
	AT	-76	02-01	14	02-03	-25	-27	-6	14	-7	-12	-3	-14	-11	-8	-13	-14
	PT	-47	02-03	18	09-97	-40	-44	-44	-47	-39	-34	-31	-26	-35	-26	-25	-26
	FI	-100	04-91	59	03-97	17	8	16	19	0	12	-10	-15	15	-1	5	11
	SE	-78	01-97	45	01-01	-27	-32	-29	-20	-38	-56	-40	-63	-69	-66	-49	-50
UK	-72	06-91	17	12-97	11	12	12	6	7	3	7	7	11	6	5	5	
TREND OF ACTIVITY COMPARED WITH PRECEDING MONTHS	EU	-35	03-93	15	03-90	-13	-11	-11	-4	-4	-5	-10	-9	-10	-9	-8	-9
	Euro area	-39	03-93	17	03-90	-15	-13	-13	-4	-4	-5	-11	-11	-12	-11	-10	-11
	BE	-37	03-91	36	02-90	-7	-4	-10	-4	1	2	-7	-9	-9	-6	0	9
	DK	-21	04-03	19	01-98	-16	-7	-15	-19	-21	-21	-16	-12	-10	-8	-10	-10
	DE	-44	11-02	19	03-90	-44	-37	-34	-20	-8	-16	-28	-30	-27	-27	-29	-26
	EL	-49	12-94	61	06-98	15	13	23	25	22	28	19	22	24	27	29	28
	ES	-49	07-97	59	01-99	13	0	10	26	17	24	0	4	-1	1	3	-16
	FR	-64	09-93	42	08-00	-27	-22	-25	-18	-20	-20	-17	-20	-21	-21	-20	-17
	IE	-45	09-91	47	05-96	-33	-35	-20	-30	-43	-18	12	-9	-9	-4	22	6
	IT	-50	03-93	23	02-90	18	20	14	10	9	11	17	15	12	9	9	16
	LU	-68	10-02	30	04-91	-55	-36	-41	-23	-60	-46	-55	-54	-39	-53	-6	-48
	NL	-41	02-96	37	03-97	-12	-7	-19	-18	-28	-17	-14	-17	-18	-14	-11	-14
	AT	-86	04-96	15	04-99	-5	-3	-16	0	-2	-2	2	7	7	7	11	4
	PT	-37	09-03	24	05-97	-27	-31	-28	-36	-32	-29	-37	-31	-29	-26	-37	-33
	FI	-88	09-91	75	01-98	44	33	29	47	9	20	20	18	5	15	21	17
	SE	-67	12-91	46	04-01	-15	-14	-12	-21	-17	-20	-31	-12	-28	-19	-22	-22
UK	-69	06-91	14	04-94	4	0	5	3	-3	1	0	4	2	7	5	6	

TABLE 4 (continued): **Survey of construction industry** ^(a)

Balances: i.e. differences between the percentages of respondents giving positive and negative replies (s.a.)

		Since 01/1990		2002				2003									
		Min.		Max.		Nov.	Dec.	Jan.	Feb.	Mar.	Apr.	May	June	July	Aug.	Sep.	Oct.
		Value	Date	Value	Date												
PRICE	EU	-23	04-96	25	04-90	-5	-4	-3	-2	-6	-5	-5	-3	-5	-3	-4	-2
EXPECTATIONS	Euro area	-26	04-96	32	04-90	-8	-8	-7	-4	-9	-9	-10	-8	-10	-7	-8	-7
	BE	-22	01-96	28	01-90	-10	-15	-13	-14	-9	-13	-12	-12	-11	-6	-5	-10
	DK	-36	03-03	0	05-98	-27	-30	-30	-26	-36	-30	-31	-29	-25	-21	-24	-21
	DE	-45	03-96	45	02-90	-27	-24	-22	-20	-21	-24	-25	-24	-22	-22	-20	-19
	EL	-28	03-93	35	06-95	17	25	22	17	17	18	12	6	4	0	-3	-5
	ES	-20	10-93	71	10-00	6	2	5	18	6	19	5	11	10	17	1	-1
	FR	-60	03-93	32	10-00	-17	-15	-14	-16	-26	-32	-26	-27	-32	-29	-24	-20
	IE	-66	07-03	58	03-00	-30	-46	-52	-35	-49	-41	-47	-52	-66	-57	-31	-21
	IT	-16	07-93	63	06-90	21	25	22	26	22	18	23	27	20	24	26	25
	LU	-67	05-93	29	11-00	-54	-63	-58	-55	-57	-65	-60	-51	-50	-52	-50	-46
	NL	-2	12-02	69	04-01	1	-2	0	1	0	2	2	1	1	3	5	0
	AT	-53	04-96	18	06-91	-4	-17	-5	-6	-7	-6	1	0	-1	1	-1	1
	PT	-40	05-03	48	01-91	-18	-19	-24	-28	-35	-29	-40	-36	-34	-28	-28	-32
	FI	-45	06-91	65	05-97	-3	5	0	4	3	3	3	-7	-1	10	-4	3
	SE	-75	08-91	33	01-01	-11	-24	-22	-8	-12	-20	-10	-14	-28	-8	-23	-14
	UK	-56	12-90	39	12-97	23	24	26	17	19	25	28	33	33	29	29	31

(a) The indicator is the average of the balances (%) for the questions on order-books and employment expectations.

TABLE 5: Results of business surveys in the retail trade ^{(a) (b)}
 Balances: i.e. differences between the percentages of respondents giving positive and negative replies (s.a.)

		Since 01/1990		2002				2003									
		Min.		Max.		Nov.	Dec.	Jan.	Feb.	Mar.	Apr.	May	June	July	Aug.	Sep.	Oct.
		Value	Date	Value	Date												
RETAIL TRADE	EU	-18	03-93	4	06-00	-10	-13	-16	-13	-17	-15	-12	-12	-9	-10	-9	-5
CONFIDENCE	Euro area	-21	03-93	8	08-90	-14	-16	-19	-14	-18	-17	-13	-14	-12	-14	-12	-10
INDICATOR	BE	-25	05-93	12	04-90	8	-2	2	-6	-15	-13	-10	-16	-12	-15	-12	-14
	DK	-6	10-01	37	11-94	15	11	13	10	3	0	4	12	14	14	13	16
	DE	-44	01-03	21	02-91	-39	-40	-44	-33	-36	-34	-29	-24	-22	-29	-22	-17
	EL	-24	06-95	23	08-00	4	3	-2	5	10	2	7	11	12	15	19	21
	ES	-36	02-93	10	06-00	-1	-3	-5	0	-3	1	-4	-3	-3	-3	-1	2
	FR	-37	01-93	5	10-94	-14	-15	-23	-22	-24	-27	-17	-24	-19	-23	-28	-21
	IE	-21	05-03	24	06-00	-10	-14	-3	-7	-16	-17	-21	-18	-20	-17	-12	-9
	IT	-19	10-96	39	10-95	17	16	13	19	6	14	14	8	14	18	17	13
	NL	-12	09-03	29	10-99	5	2	4	2	4	3	-5	-7	-8	-9	-12	-11
	AT	-29	03-03	4	07-00	-15	-25	-27	-18	-29	-27	-19	-16	-18	-15	-16	-10
	PT	-27	02-03	4	07-99	-23	-19	-27	-27	-24	-22	-24	-25	-22	-20	-21	-21
	FI	-17	11-00	8	05-97	-3	-11	-10	-2	-8	-9	-9	-12	-12	-7	-8	-7
	SE	-8	10-01	27	04-00	19	16	11	9	5	2	4	0	-2	4	9	5
	UK	-27	09-92	19	04-02	2	-7	-9	-12	-16	-11	-9	-4	0	3	0	16
PRESENT	EU	-27	06-93	18	07-90	-11	-20	-24	-16	-23	-21	-16	-15	-14	-13	-14	-7
BUSINESS	Euro area	-30	01-03	22	07-90	-17	-24	-30	-18	-25	-24	-19	-18	-19	-18	-19	-17
SITUATION	BE	-41	10-95	29	06-00	17	-2	7	3	-21	-8	-6	-16	-7	-3	-9	-10
	DK	-1	10-01	57	11-94	33	26	21	18	9	3	8	17	22	15	17	24
Component of the	DE	-66	02-02	46	11-90	-43	-55	-65	-46	-46	-45	-34	-26	-30	-32	-33	-24
retail trade	EL	-50	06-95	27	10-03	-12	-19	-25	-7	-2	-8	3	24	19	17	17	27
confidence indicator	ES	-72	07-93	4	06-00	-14	-19	-20	-11	-15	-12	-26	-17	-23	-17	-21	-22
	FR	-64	02-93	16	09-98	-26	-27	-35	-34	-46	-50	-36	-40	-36	-37	-39	-34
	IE	-30	05-03	37	06-98	-8	-7	3	5	-24	-11	-30	-23	-11	-23	-11	-12
	IT	-42	02-95	73	02-93	27	21	15	38	21	25	28	16	19	27	30	18
	NL	-17	09-03	57	10-99	18	15	19	23	22	23	-2	-7	-6	-10	-17	-16
	AT	-36	04-03	13	07-00	-16	-33	-27	-19	-33	-36	-24	-17	-20	-22	-26	-14
	PT	-49	06-03	3	07-99	-38	-42	-46	-48	-45	-39	-49	-49	-45	-44	-47	-44
	FI	-15	11-00	23	12-01	13	-6	-6	11	4	5	-1	1	-5	7	6	8
	SE	-21	10-96	34	07-00	26	27	23	16	14	9	15	7	5	14	23	18
	UK	-57	09-92	40	04-02	9	-10	-8	-19	-22	-16	-5	-5	3	5	3	31
VOLUME	EU	11	05-93	23	03-02	19	18	19	15	18	17	19	19	16	18	15	13
OF STOCKS	Euro area	7	01-91	23	03-02	18	17	18	14	18	17	18	18	16	18	14	12
	BE	-4	09-90	32	03-92	0	5	1	2	4	9	10	16	15	22	22	21
Component of the	DK	-1	05-98	32	04-00	23	24	17	19	24	28	24	20	21	21	22	19
retail trade	DE	4	02-91	43	02-02	39	33	35	28	37	33	35	32	28	40	25	20
confidence indicator	EL	-7	11-02	41	12-93	-7	6	10	9	5	12	10	12	10	5	-2	1
	ES	-8	02-96	16	07-92	4	6	6	3	8	5	4	5	5	7	7	5
	FR	-3	10-93	21	09-98	8	9	11	12	10	8	9	18	10	10	12	14
	IE	-5	07-00	25	08-98	13	18	9	10	10	11	18	12	17	20	16	16
	IT	-8	10-99	43	10-96	6	4	2	1	2	5	7	3	2	-1	-2	-3
	NL	5	07-99	17	11-95	13	10	11	14	11	15	11	12	13	14	15	15
	AT	-2	01-00	36	01-96	17	24	34	22	29	26	21	23	22	16	21	16
	PT	-3	05-03	25	06-90	8	3	9	3	-2	6	-3	4	4	-2	2	1
	FI	22	11-01	40	08-00	28	28	29	23	28	27	26	32	33	32	33	29
	SE	18	04-00	44	06-98	22	23	23	25	28	27	30	29	31	30	31	30
	UK	4	04-93	33	02-91	20	23	25	14	15	16	23	19	16	13	16	13
EXPECTED	EU	-16	01-93	17	06-00	-1	-2	-6	-7	-11	-6	-1	-2	3	0	1	6
BUSINESS	Euro area	-22	03-93	16	06-00	-7	-7	-10	-9	-12	-9	-3	-6	0	-5	-4	0
SITUATION	BE	-23	04-03	22	04-98	8	0	0	-18	-19	-23	-13	-15	-13	-19	-6	-11
	DK	7	10-01	71	07-94	36	31	34	31	25	26	29	39	40	47	44	44
Component of the	DE	-42	10-02	26	12-90	-35	-32	-33	-25	-26	-23	-18	-15	-7	-16	-7	-7
retail trade	EL	-4	06-95	60	06-00	18	33	30	31	38	25	29	22	27	34	38	38
confidence indicator	ES	-34	02-93	34	04-91	16	15	10	14	14	20	19	13	19	16	24	33
	FR	-50	03-93	11	10-94	-7	-9	-22	-20	-16	-23	-6	-13	-12	-21	-32	-16
	IE	-31	07-03	44	11-97	-9	-18	-2	-15	-15	-28	-15	-20	-31	-8	-8	0
	IT	-20	03-93	59	06-96	29	30	27	20	0	22	21	12	25	27	19	18
	NL	-5	07-03	41	10-99	9	0	4	-3	0	2	-3	-2	-5	-4	-4	-3
	AT	-24	03-03	15	07-00	-11	-17	-20	-13	-24	-19	-13	-8	-12	-6	0	0
	PT	-29	02-03	39	01-90	-23	-12	-26	-29	-28	-20	-27	-21	-18	-19	-15	-17
	FI	-4	06-03	39	05-97	7	1	4	5	1	-4	1	-4	1	4	2	1
	SE	19	10-01	67	04-00	53	44	34	37	29	24	28	22	20	29	36	28
	UK	-25	10-98	40	01-97	18	13	6	-4	-12	0	0	11	12	17	13	30

TABLE 5 (continued): Results of business surveys in the retail trade^(a)

Balances: i.e. differences between the percentages of respondents giving positive and negative replies (s.a.)

		Since 01/1990				2002		2003										
		Min.		Max.														
		Value	Date	Value	Date	Nov.	Dec.	Jan.	Feb.	Mar.	Apr.	May	June	July	Aug.	Sep.	Oct.	
INTENTIONS OF PLACING ORDERS	EU	-16	10-02	13	01-90	-10	-10	-11	-14	-15	-14	-6	-11	-7	-8	-4	-4	
	Euro area	-23	10-02	15	01-90	-16	-15	-13	-16	-15	-15	-7	-12	-9	-11	-6	-10	
	BE	-27	05-93	15	03-90	-5	-8	-6	-17	-18	-18	-16	-16	-15	-16	-16	-14	
	DK	-12	10-01	58	07-94	3	13	4	4	-2	3	1	12	15	19	17	18	
	DE	-51	09-02	21	02-91	-44	-42	-31	-35	-31	-33	-22	-29	-22	-28	-13	-20	
	EL	-23	04-93	38	06-96	10	8	0	7	9	1	2	7	9	8	9	11	
	ES	-31	02-93	21	01-90	9	3	5	3	7	8	11	12	8	7	9	12	
	FR	-37	01-93	11	10-99	-7	-9	-7	-8	-13	-17	-2	-8	-10	-13	-17	-15	
	IE	-43	05-03	27	08-00	-27	-31	-18	-26	-28	-23	-43	-32	-37	-38	-28	-22	
	IT	-24	10-97	69	04-92	12	24	14	6	7	15	27	11	21	25	28	14	
	NL	-22	09-03	25	08-99	-8	-14	-16	-22	-20	-16	-20	-18	-20	-21	-22	-18	
	AT	-42	03-99	-16	06-00	-28	-31	-35	-30	-39	-37	-36	-34	-30	-32	-21	-25	
	PT	-47	02-03	12	11-98	-38	-35	-41	-47	-43	-38	-41	-42	-38	-38	-32	-29	
	FI	-20	07-03	6	05-97	-9	-9	-7	-9	-8	-10	-15	-18	-20	-14	-13	-12	
	SE	-17	10-01	52	03-00	24	19	19	14	12	10	12	-1	3	7	12	9	
UK	-37	03-91	34	10-96	9	5	-8	-11	-16	-13	-5	-10	-2	3	3	17		
EMPLOYMENT EXPECTATIONS	EU	-13	12-92	9	08-00	1	-2	-5	-3	-7	-7	-4	-5	-3	-5	-1	-4	
	Euro area	-11	02-97	10	08-00	-1	-3	-9	-6	-8	-6	-3	-4	-2	-4	-1	-4	
	BE	-13	12-92	16	07-90	10	6	0	6	10	4	4	3	-6	-1	-1	3	
	DK	-8	05-01	28	05-00	6	5	6	4	5	3	-5	3	11	7	9	7	
	DE^(c)	-32	01-03	15	03-98	-20	-25	-32	-24	-31	-24	-23	-23	-18	-22	-15	-11	
	EL	-8	09-00	62	03-98	31	4	2	6	5	2	9	3	13	12	12	16	
	ES	-19	09-93	8	12-98	5	3	-1	0	3	5	4	6	5	3	4	3	
	FR	-14	06-92	12	10-00	0	-3	-3	0	-1	0	-2	-1	-3	-3	-2	-2	
	IE	-17	05-03	22	03-98	-6	-6	-4	-6	-6	-10	-17	-14	-6	-9	-3	-7	
	IT	-34	02-97	54	02-00	29	37	22	18	18	15	32	29	33	30	35	6	
	NL	-6	09-03	13	01-00	-1	-3	0	-3	-3	-3	-1	-5	-4	-6	-6	-5	
	AT	-20	03-99	71	01-96	-6	-12	-8	-7	-11	-16	-11	-8	-8	-8	-10	-9	
	PT	-21	04-03	13	09-97	-15	-15	-17	-21	-21	-21	-19	-18	-13	-19	-18	-18	
	FI	-16	07-03	7	03-98	-2	-7	-6	-5	-10	-8	-4	-11	-16	-9	-8	-9	
	SE	-34	10-96	23	06-00	12	7	5	4	0	-2	-8	-11	-16	-14	-10	-13	
UK	-32	12-91	25	10-97	9	4	9	6	-2	-11	-6	-12	-5	-13	-2	-5		

(a) United Kingdom: refers to the volume of sales for the time of the year.

(b) The indicator is the arithmetic average of the balances (%) for the present and the future business situation, and for stocks – with inverted sign.

(c) Quarterly data, seasonally adjusted monthly.

TABLE 6: **Monthly survey of services** — Monthly questions ^(a)
Balances: i.e. differences between the percentages of respondents giving positive and negative replies (s.a.)

		Since 01/1990		2002				2003									
		Min.		Max.													
		Value	Date	Value	Date	Nov.	Dec.	Jan.	Feb.	Mar.	Apr.	May	June	July	Aug.	Sep.	Oct.
SERVICES CONFIDENCE INDICATOR	EU	-9	03-03	32	06-00	-4	-7	-5	-5	-9	-4	-3	-2	2	5	7	7
	Euro area	-7	03-03	34	08-98	-4	-5	-5	-5	-7	-3	-2	-1	3	6	7	9
	BE	-8	03-03	33	03-98	0	-5	-5	2	-8	-2	1	-6	-3	-1	2	12
	DK	11	03-03	36	07-00	20	19	16	14	11	14	15	19	24	23	27	28
	DE	-23	12-02	52	03-99	-21	-23	-20	-18	-18	-9	-7	-4	5	10	14	13
	EL	-14	04-03	62	08-00	-1	0	10	0	-4	-14	1	5	3	4	5	15
	ES	15	08-02	56	06-98	18	19	17	22	17	24	25	21	19	18	19	24
	FR	-22	06-93	25	06-90	0	2	-2	-3	-8	-9	-7	-5	-4	-4	-4	-3
	IE	-14	05-03	44	08-98	-3	-10	-3	-2	-4	-3	-14	-3	-8	-7	-4	-10
	IT	-5	10-02	43	02-98	3	-1	3	-1	-1	4	-1	-1	-2	7	3	10
	NL	3	06-03	35	03-99	13	14	10	6	5	9	9	3	9	6	9	7
	AT	0	01-02	30	03-98	9	8	8	8	3	3	3	8	12	9	17	17
	PT	-17	05-03	29	06-01	-8	-4	-3	-2	-11	-14	-17	-13	-5	-5	-10	-6
	FI	-11	09-03	61	09-00	25	21	1	11	-11	-8	-5	-6	8	6	-11	10
	SE	-24	03-03	46	02-01	-17	-16	-24	-17	-24	-10	1	6	2	4	3	7
UK	-20	12-02	37	11-97	-4	-20	-8	-5	-19	-14	-13	-16	-11	-5	2	-4	
ASSESSMENT OF BUSINESS SITUATION	EU	-20	03-03	37	06-00	-15	-16	-17	-16	-20	-16	-14	-13	-5	-5	-1	0
	Euro area	-18	03-03	39	09-00	-13	-13	-15	-15	-18	-14	-11	-10	-3	-1	1	4
	BE	-27	06-03	28	01-98	-23	-23	-24	-20	-26	-24	-17	-27	-16	-16	-16	-9
	DK	4	05-03	43	04-00	19	16	12	12	5	13	4	8	16	11	22	18
	DE	-35	02-03	63	12-98	-29	-32	-35	-35	-34	-27	-16	-12	3	7	12	11
	EL	-42	04-03	58	09-00	-32	-24	-16	-25	-31	-42	-7	3	5	9	12	18
	ES	11	06-03	67	04-00	21	22	20	24	20	19	16	11	14	13	13	19
	FR	-35	09-96	29	06-00	-8	-8	-10	-10	-15	-20	-13	-11	-9	-9	-8	-9
	IE	-16	05-03	52	02-00	-4	-12	-1	-5	-10	-8	-16	-5	-12	-10	-7	-14
	IT	-27	10-02	44	02-01	-17	-12	-15	-15	-21	-1	-20	-16	-21	-14	-13	0
	NL	-26	07-93	70	12-00	24	30	21	11	18	6	-2	-8	4	4	2	5
	AT	-4	10-96	30	06-98	5	4	6	5	-3	-2	1	3	12	6	14	14
	PT	-22	06-03	24	11-97	-7	-5	-5	-1	-16	-15	-22	-22	-17	-12	-10	-10
	FI	-46	03-03	79	05-98	-8	-25	-41	-23	-46	-42	-28	-43	-17	-7	-22	-5
	SE	-60	01-02	40	12-00	-45	-47	-51	-49	-57	-23	-2	-1	1	-4	-1	7
UK	-35	12-02	27	12-97	-28	-35	-25	-19	-31	-28	-33	-32	-19	-29	-16	-20	
EVOLUTION OF DEMAND IN RECENT MONTHS	EU	-12	03-03	32	03-98	-1	-5	-10	-7	-12	-2	-2	-1	0	4	5	7
	Euro area	-16	01-02	32	03-00	-4	-4	-12	-9	-13	-1	0	1	3	5	4	9
	BE	-9	03-03	41	11-97	8	-7	-3	9	-9	11	6	-3	9	-1	-5	17
	DK	7	04-03	33	07-00	17	14	17	13	10	7	13	18	22	21	26	31
	DE	-32	02-02	43	09-98	-22	-23	-31	-26	-26	-6	-7	-3	-1	6	11	11
	EL	-9	04-03	71	06-01	11	9	19	11	9	-9	5	4	-3	-3	-2	11
	ES	-1	08-02	56	06-98	7	10	0	8	2	11	19	13	11	6	20	19
	FR	-33	03-97	36	01-90	6	12	0	0	-8	-1	-2	2	-3	-4	-7	-3
	IE	-24	10-03	46	08-98	-17	-15	-8	-13	-13	-8	-18	-10	-13	-12	-13	-24
	IT	-28	08-02	38	03-01	3	-4	-4	-4	-4	0	0	1	12	15	1	11
	NL	-49	03-01	50	06-98	2	4	-12	-5	-8	12	22	11	11	4	7	4
	AT	-16	01-02	35	03-98	9	6	4	8	4	-2	1	5	11	9	21	21
	PT	-34	05-03	26	06-01	-12	-15	-13	-21	-17	-29	-34	-22	-8	-9	-5	-6
	FI	-20	09-03	83	04-01	29	51	12	33	-5	7	6	7	-2	13	-20	35
	SE	-19	10-01	53	01-01	-6	0	-16	-12	-16	-10	-6	-1	-2	-5	-5	4
UK	-19	07-03	43	01-97	13	-13	3	2	-12	-5	-12	-18	-19	1	9	-2	
EVOLUTION OF DEMAND EXPECTED IN THE MONTHS AHEAD	EU	-1	11-01	37	06-98	5	1	11	9	6	5	6	7	10	15	16	14
	Euro area	-6	11-01	38	05-00	5	2	13	10	9	7	6	6	10	14	16	15
	BE	-2	07-03	51	01-95	15	15	12	16	12	6	15	12	-2	14	28	28
	DK	16	09-01	39	07-00	23	26	19	18	17	21	27	32	33	36	33	35
	DE	-22	11-01	59	09-00	-12	-14	7	6	5	5	2	4	12	16	19	17
	EL	5	05-03	75	09-01	17	14	28	13	11	10	5	8	8	7	6	17
	ES	23	09-02	59	06-98	25	26	30	33	28	41	39	39	31	34	25	34
	FR	-17	09-93	32	03-01	1	3	3	1	0	-6	-7	-7	1	2	4	3
	IE	-7	05-03	45	08-98	12	-3	1	11	10	6	-7	6	1	0	8	7
	IT	-6	09-00	57	06-01	23	13	29	15	22	12	17	11	2	19	21	18
	NL	-4	01-96	54	07-00	14	8	20	13	6	10	6	5	11	10	17	12
	AT	-1	10-01	34	06-98	14	14	15	12	9	12	8	15	13	12	16	17
	PT	-16	09-03	40	06-01	-4	9	10	15	1	1	4	6	9	7	-16	-1
	FI	-12	11-96	71	01-01	55	37	33	24	18	12	6	18	44	12	8	1
	SE	-4	01-03	66	02-01	-1	-1	-4	9	2	4	11	19	8	22	15	10
UK	-14	03-03	57	11-97	4	-12	-3	2	-14	-10	5	1	5	13	14	9	

TABLE 6 (continued): **Monthly survey of services** — Monthly questions ^(a)

Balances: i.e. differences between the percentages of respondents giving positive and negative replies (s.a.)

		Since 01/1990				2002				2003							
		Min.		Max.													
		Value	Date	Value	Date	Nov.	Dec.	Jan.	Feb.	Mar.	Apr.	May	June	July	Aug.	Sep.	Oct.
EVOLUTION OF EMPLOYMENT IN RECENT MONTHS	EU	-10	03-03	26	03-99	0	-8	-5	-5	-10	-9	-6	-3	-5	-4	-1	-1
	Euro area	-8	03-03	28	03-99	-3	-6	-5	-4	-8	-6	-5	-2	-3	-2	2	0
	BE	-14	08-02	30	08-98	-5	-7	-5	-8	-2	-4	-4	-5	-7	-3	-1	-2
	DK	-2	04-03	22	04-00	4	4	0	0	0	-2	0	0	5	2	4	4
	DE	-19	12-02	44	03-99	-19	-19	-17	-11	-12	-11	-10	-7	-7	-6	-2	-8
	EL	-42	06-01	44	06-00	-2	-3	-5	-9	-8	4	1	0	9	9	9	0
	ES	4	03-03	45	08-98	9	5	6	16	4	7	14	10	14	12	10	10
	FR	-27	06-93	23	03-00	6	3	6	-2	-11	-3	1	3	0	0	-1	5
	IE	-12	08-03	25	02-98	-11	-10	-6	-9	-11	-4	-6	-4	-11	-12	-11	-11
	IT	-13	05-03	25	05-00	6	-5	2	-5	-6	-7	-13	-4	-7	-2	16	9
	NL	-8	05-03	66	06-98	3	4	-1	-1	-1	-5	-8	-3	-2	-4	-6	-3
	AT	-7	08-02	18	06-00	-6	-6	-5	-3	-4	1	-2	-2	-2	1	0	0
	PT	-34	05-03	28	07-98	-13	-18	-30	-27	-23	-31	-34	-32	-28	-29	-25	-26
	FI	-26	04-97	91	11-97	49	50	8	36	-6	-14	-12	4	-23	12	1	6
	SE	-40	04-03	42	01-01	-21	-19	-33	-33	-26	-40	-34	-24	-36	-29	-28	-19
UK	-22	04-03	27	06-00	22	-20	-6	-6	-20	-22	-6	-6	-11	-11	-14	-2	
EVOLUTION OF EMPLOYMENT EXPECTED IN THE MONTHS AHEAD	EU ⁽ⁿ⁾	-8	12-02	25	01-01	-2	-8	1	-1	-2	-3	-1	2	0	-1	-1	-6
	Euro area ⁽ⁿ⁾	-7	10-02	27	04-00	-4	-6	1	-1	1	-1	-1	1	1	-1	-3	-7
	BE	-11	04-03	34	11-99	-9	-1	-9	-3	-4	-11	-5	-4	-9	-3	7	7
	DK	3	03-03	18	06-00	6	5	5	3	3	4	8	6	8	11	11	10
	DE ⁽ⁿ⁾	-15	12-02	15	02-01	-15	-15	-8	-7	-9	-6	-10	-10	-1	-2	-7	-10
	EL	-33	06-01	47	06-99	3	5	3	-3	-12	13	9	11	14	12	10	1
	ES	3	08-02	41	04-00	9	8	6	8	8	8	14	19	11	8	5	14
	FR	-31	06-97	21	06-98	9	0	2	1	-1	-2	-1	-2	-3	-4	-2	-6
	IE	-8	10-03	31	04-98	5	-2	2	0	2	4	5	0	-1	-7	-2	-8
	IT	-8	04-03	34	06-00	13	12	5	-5	4	-8	-3	7	6	0	8	5
	NL	-2	05-03	40	03-99	3	2	7	1	1	4	-2	1	2	2	-1	2
	AT	-3	10-01	27	09-98	0	-1	3	2	-1	2	-1	1	2	1	1	0
	PT	-24	01-03	37	08-03	-17	-15	-24	-20	-19	-23	12	6	-13	37	30	-5
	FI	-31	11-96	82	12-00	13	-2	37	9	-7	-10	-22	-9	-10	-1	-8	-13
	SE	-35	11-01	62	09-00	-14	-17	-25	-23	-20	-26	-20	-8	-26	-10	-16	-10
UK	-17	03-03	33	06-98	15	-17	0	-3	-17	-12	0	8	-2	0	4	4	

(a) The indicator is the arithmetic average of the balances (%) for the questions on business situation and recent and expected evolution of demand.

(n) Not seasonally adjusted.

TABLE 7: Business and consumer surveys in the future Member States (s.a.)^(a)

		Since 01/1990				2002		2003									
		Min.		Max.													
		Value	Date	Value	Date	Nov.	Dec.	Jan.	Feb.	Mar.	Apr.	May	June	July	Aug.	Sep.	Oct.
INDUSTRIAL CONFIDENCE INDICATOR	All	-22	02-99	4	11-97	-9	-8	-7	-3	-4	-5	-6	-7	-6	-4	-6	-3
	BG	-30	06-93	8	11-95	-4	-5	-3	-3	-4	-4	-2	-2	-2	-2	-1	-3
	CY ⁽ⁿ⁾	-13	04-03	11	05-03	7	0	-4	-6	2	-13	11	4	-4	3	6	6
	CZ	-31	03-99	27	06-00	0	-2	-5	4	4	7	2	3	-1	0	-3	9
	EE	-31	07-92	19	03-01	12	7	17	18	17	11	6	7	11	11	11	12
	HU	-15	05-99	8	04-98	-5	-6	-10	-8	-11	-8	-7	-9	-4	-5	-8	-7
	LV	-44	04-93	7	03-03	1	2	1	3	7	4	4	1	4	4	5	4
	LT	-37	11-98	0	07-95	-7	-8	-9	-8	-14	-14	-11	-17	-14	-14	-10	-7
	PL	-29	10-01	9	09-97	-21	-18	-12	-8	-11	-16	-17	-15	-13	-10	-14	-15
	RO	-22	09-92	28	06-96	0	-2	2	6	9	9	8	8	8	9	8	12
	SK	-23	12-95	26	05-96	9	8	-1	2	4	13	8	11	3	3	5	13
SI	-21	03-99	18	06-00	0	-1	-1	-1	-6	-11	-9	-10	-7	-5	0	-2	
CONSUMER CONFIDENCE INDICATOR	All ⁽ⁿ⁾	-28	10-03	-22	10-02	-25	-27	-25	-27	-27	-27	-24	-25	-26	-28	-28	-28
	BG ⁽ⁿ⁾	-37	08-03	-12	08-01	-31	-28	-27	-31	-31	-36	-33	-32	-37	-37	-30	-27
	CY ⁽ⁿ⁾	-38	10-01	-9	06-01	-26	-22	-26	-23	-25	-28	-23	-21	-24	-25	-24	-29
	CZ	-36	03-98	1	04-01	-10	-9	-13	-15	-14	-16	-15	-13	-15	-13	-15	-20
	EE	-56	04-93	0	03-03	-5	-7	-3	-4	0	-4	-6	-9	-11	-13	-11	-12
	HU	-59	04-95	0	08-02	-9	-7	-14	-20	-21	-18	-20	-22	-23	-31	-30	-29
	LV ⁽ⁿ⁾	-42	09-93	-5	09-01	-8	-10	-12	-13	-16	-12	-12	-14	-13	-18	-15	-13
	LT ⁽ⁿ⁾	-33	05-01	-6	01-03	-17	-15	-6	-9	-9	-11	-9	-10	-11	-9	-13	-11
	PL ⁽ⁿ⁾	-40	08-01	-27	09-01	-34	-38	-34	-35	-36	-35	-29	-30	-30	-33	-32	-33
	RO ⁽ⁿ⁾	-35	07-02	-20	06-01	-26	-22	-21	-25	-28	-31	-28	-31	-29	-32	-31	-26
	SK ⁽ⁿ⁾	-48	09-99	-24	09-02	-42	-42	-40	-37	-38	-35	-30	-33	-33	-35	-31	-31
SI	-29	06-99	-12	06-01	-17	-16	-19	-19	-17	-18	-20	-17	-22	-20	-20	-20	
CONSTRUCTION CONFIDENCE INDICATOR	All	-64	06-93	-2	09-96	-33	-36	-31	-31	-31	-28	-28	-27	-28	-27	-29	-27
	BG	-56	10-93	-7	05-03	-20	-31	-18	-20	-19	-24	-7	-24	-17	-17	-19	-16
	CY ⁽ⁿ⁾	4	04-03	28	06-03	18	17	10	4	12	4	13	28	9	20	22	20
	CZ	-64	06-99	3	06-95	-5	-1	-7	-6	-8	-9	-10	-5	-6	-3	-8	-8
	EE ⁽ⁿ⁾	-46	03-99	32	07-02	-1	-11	-5	-2	-3	5	12	15	22	16	19	11
	HU	-21	07-96	12	09-98	-10	-10	-20	-16	-17	-14	-9	-18	-19	-16	-15	-16
	LV	-64	07-93	-8	03-03	-14	-18	-20	-13	-8	-12	-10	-10	-11	-15	-23	-11
	LT	-76	09-00	-8	10-02	-29	-28	-26	-13	-10	-17	-20	-13	-17	-20	-22	-17
	PL	-63	12-02	-23	03-98	-58	-63	-51	-54	-54	-52	-52	-51	-52	-51	-54	-53
	RO	-60	09-99	35	06-96	-26	-28	-28	-20	-10	-10	-14	-8	-4	-7	-9	7
	SK	-86	07-99	18	03-97	-22	-21	-23	-21	-19	-12	-13	-15	-20	-17	-16	-17
SI ⁽ⁿ⁾	-28	05-02	2	06-03	-18	-27	-17	-20	-15	-5	-1	2	-3	-4	-11	-11	
RETAIL TRADE CONFIDENCE INDICATOR	All	-4	11-01	10	10-97	1	1	1	-1	-2	-2	0	-1	-1	0	1	3
	BG	5	11-00	32	07-00	19	15	15	13	13	12	7	7	7	8	9	8
	CY ⁽ⁿ⁾	-21	04-03	0	01-03	-1	-6	0	-6	-8	-21	-1	-7	-12	-2	-4	-10
	CZ	-2	02-99	26	01-03	23	21	26	17	18	16	15	16	20	23	21	23
	EE ⁽ⁿ⁾	-37	03-99	22	09-03	10	8	6	5	5	3	18	18	19	17	22	19
	HU	-16	06-03	9	02-98	-5	-3	-7	-11	-15	-11	-10	-16	-14	-11	-12	-9
	LV	1	12-96	19	06-03	11	12	10	12	13	13	16	19	17	16	11	13
	LT	-25	09-00	7	12-02	7	7	2	4	3	0	0	4	1	2	3	0
	PL	-19	01-02	7	07-98	-9	-10	-7	-11	-12	-14	-12	-13	-13	-13	-10	-7
	RO	1	06-99	36	12-97	10	10	13	7	12	16	26	26	20	22	20	20
	SK	-17	11-94	34	11-98	1	2	-4	23	8	16	16	11	12	9	7	20
SI	3	01-01	22	04-99	12	9	10	6	8	5	12	11	11	12	11	14	
SERVICES CONFIDENCE INDICATOR	All ⁽ⁿ⁾	10	03-03	29	10-02	28	24	10	10	10	15	14	17	13	16	12	15
	BG ⁽ⁿ⁾	12	03-03	43	06-02	29	34	28	23	12	18	17	23	31	33	31	29
	CY ⁽ⁿ⁾	-16	02-03	23	09-03	-9	-12	-8	-16	-15	-7	5	-2	-2	14	23	20
	CZ ⁽ⁿ⁾	35	01-03	52	07-02	44	41	35	38	41	44	41	43	39	42	40	40
	EE ⁽ⁿ⁾	14	01-03	38	05-03	24	15	14	23	28	37	38	37	31	21	17	27
	HU ⁽ⁿ⁾	-10	05-03	14	03-02	7	7	4	-3	-1	2	-10	0	-3	5	-2	2
	LV ⁽ⁿ⁾	2	12-02	19	06-03	3	2	8	11	12	17	17	19	17	14	9	10
	LT ⁽ⁿ⁾	7	07-03	40	04-03	18	18	17	22	39	40	22	20	7	10	10	22
	PL ⁽ⁿ⁾	-8	03-03	1	10-03	:	:	-6	-6	-8	-5	-3	-1	-2	-1	1	1
	RO ⁽ⁿ⁾	6	02-03	58	06-03	35	25	6	6	16	35	40	58	33	42	27	21
	SK ⁽ⁿ⁾	32	07-02	61	05-03	61	52	53	56	51	55	61	57	46	54	:	53
SI ⁽ⁿ⁾	22	09-03	34	10-02	28	25	23	26	23	27	28	29	24	23	22	24	

(a) All data are balances.

(n) Not seasonally adjusted.

Source: Surveys conducted by national statistical (and other) institutes and harmonised by European Commission.