



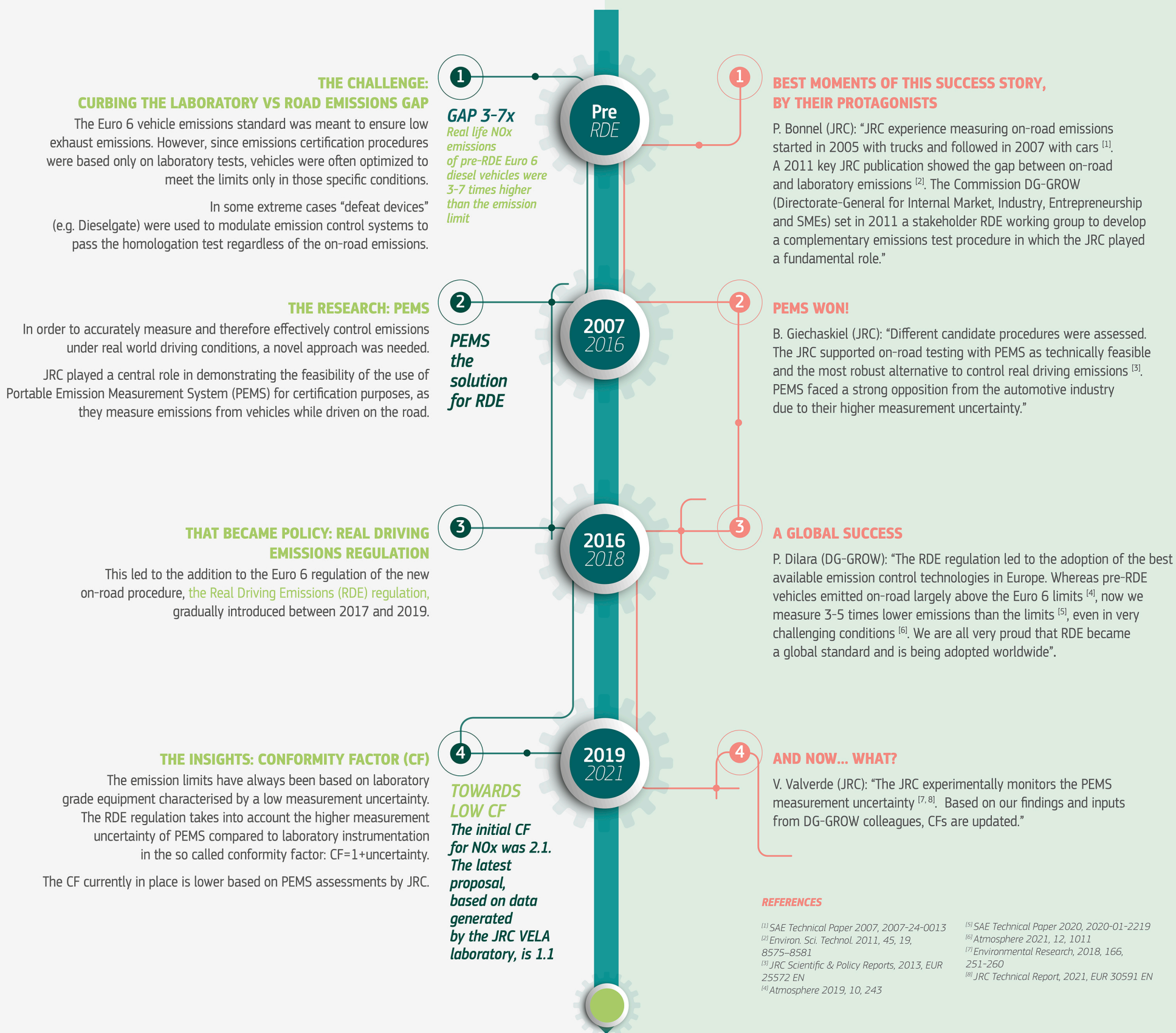
HOW DOES RESEARCH HELP IN DESIGNING BETTER POLICIES?

RDE REAL-DRIVING EMISSION

VEHICLES ARE NOW CLEAN ALSO ON THE ROAD UNDER A WIDE RANGE OF CONDITIONS

Vehicle emission limits (the so called Euro standards), which are in place since 1970s, have decreased by more 90% over the last decades. However, the actual emissions on the road did not follow the same trend and remained much higher, until the introduction of the RDE (Real Driving Emissions) regulation.

This is the story of how a team of EU scientists from the Joint Research Centre (JRC) and lawyers and engineers from the Directorate-General for Internal Market, Industry, Entrepreneurship & SMEs (DG-GROW) jointly developed the rules that have brought truly clean cars on the roads.



RESEARCH HELPS TO BUILD A BETTER EUROPE
RESEARCH IS MADE BY PEOPLE

