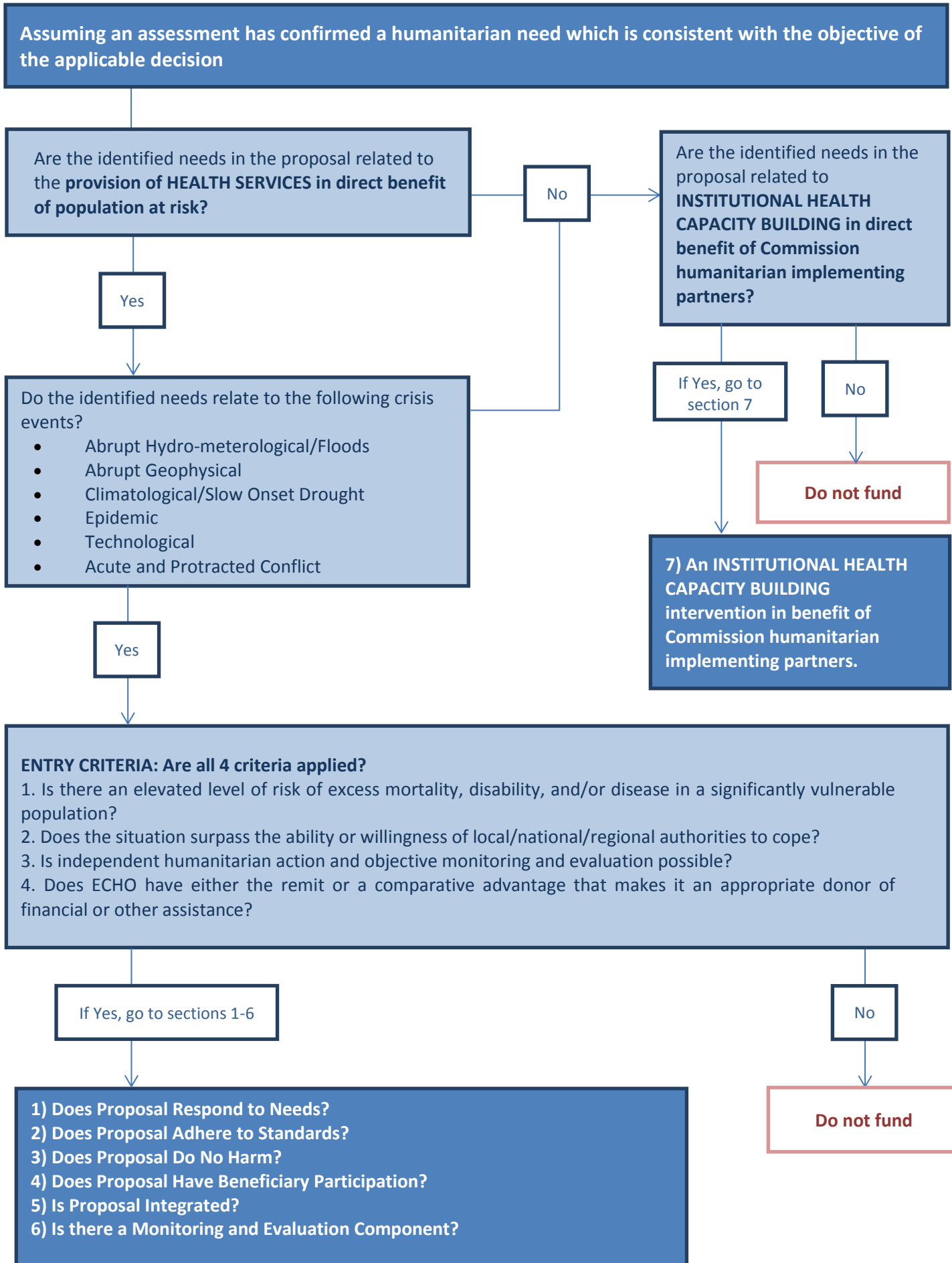
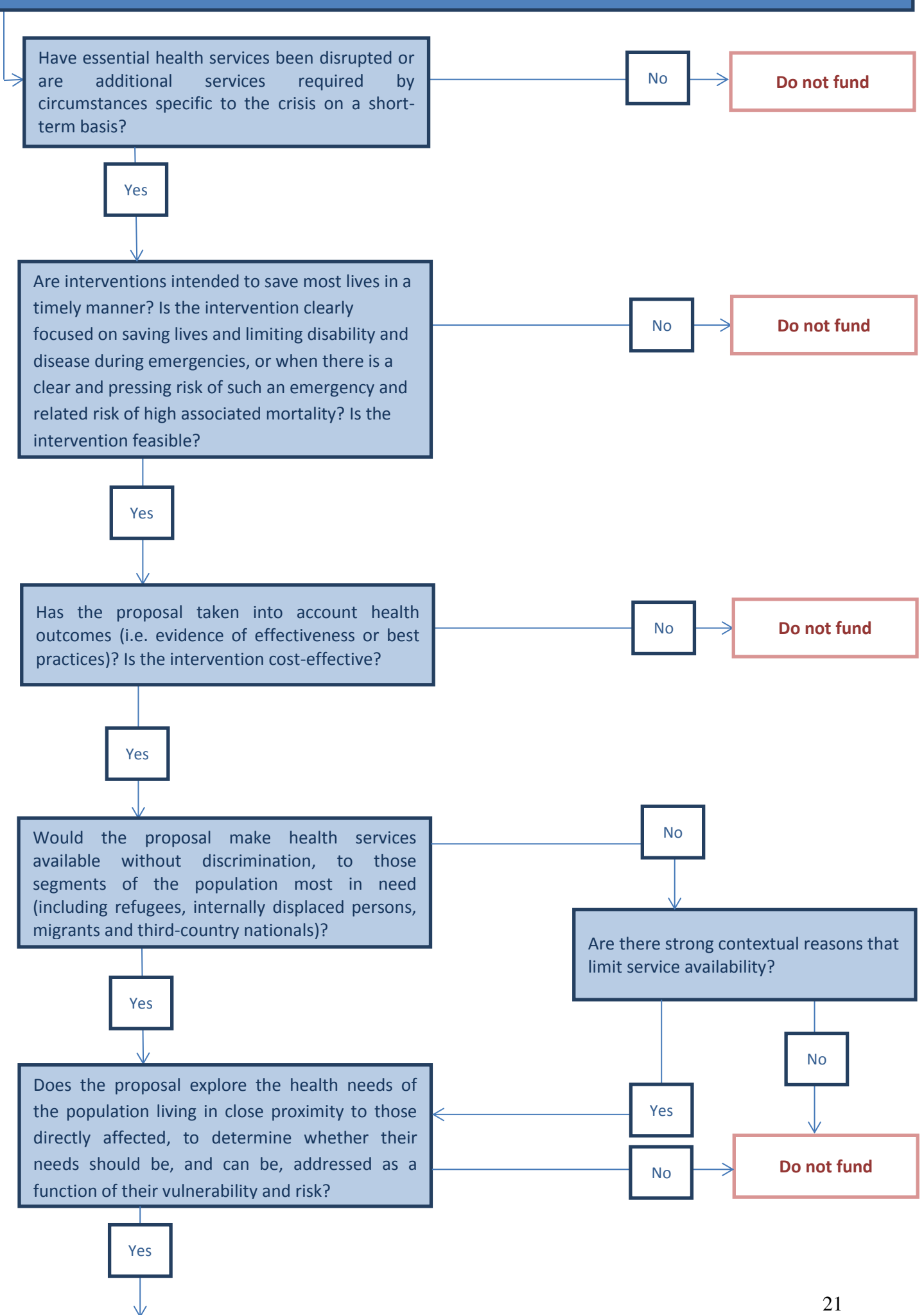
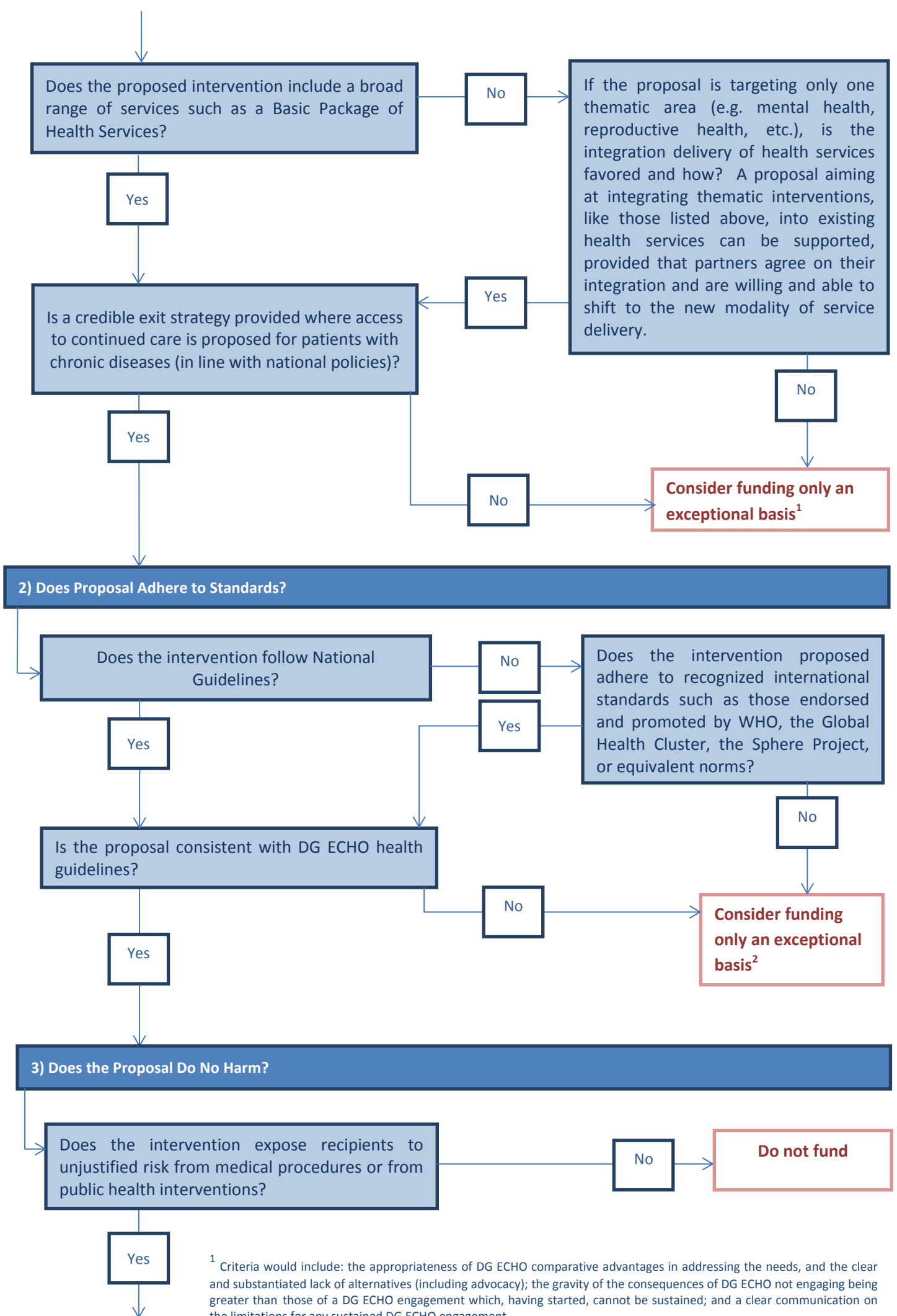


ANNEX A. FULL INDICATIVE DECISION TREE



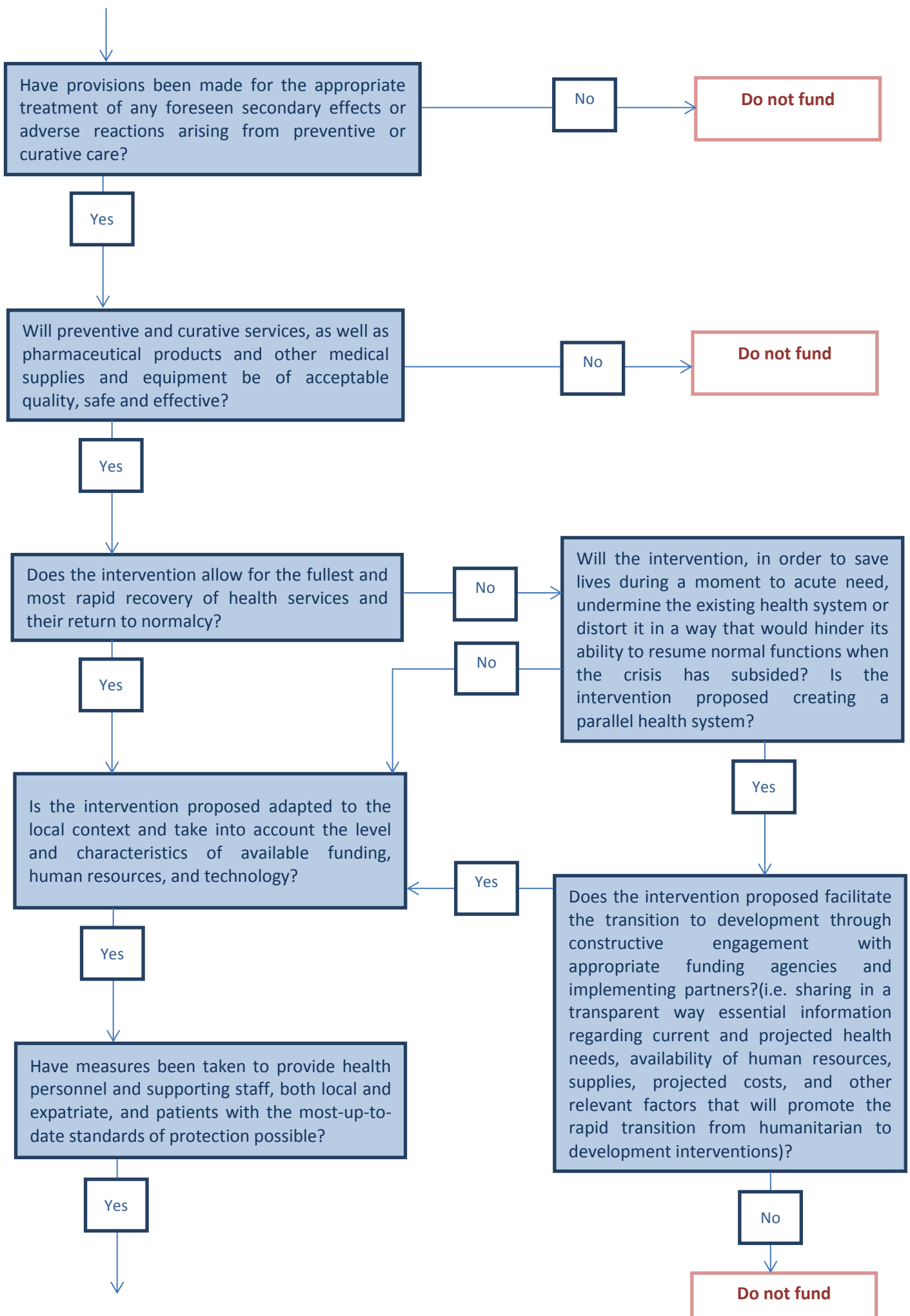
1) Does Proposal Respond to Needs?

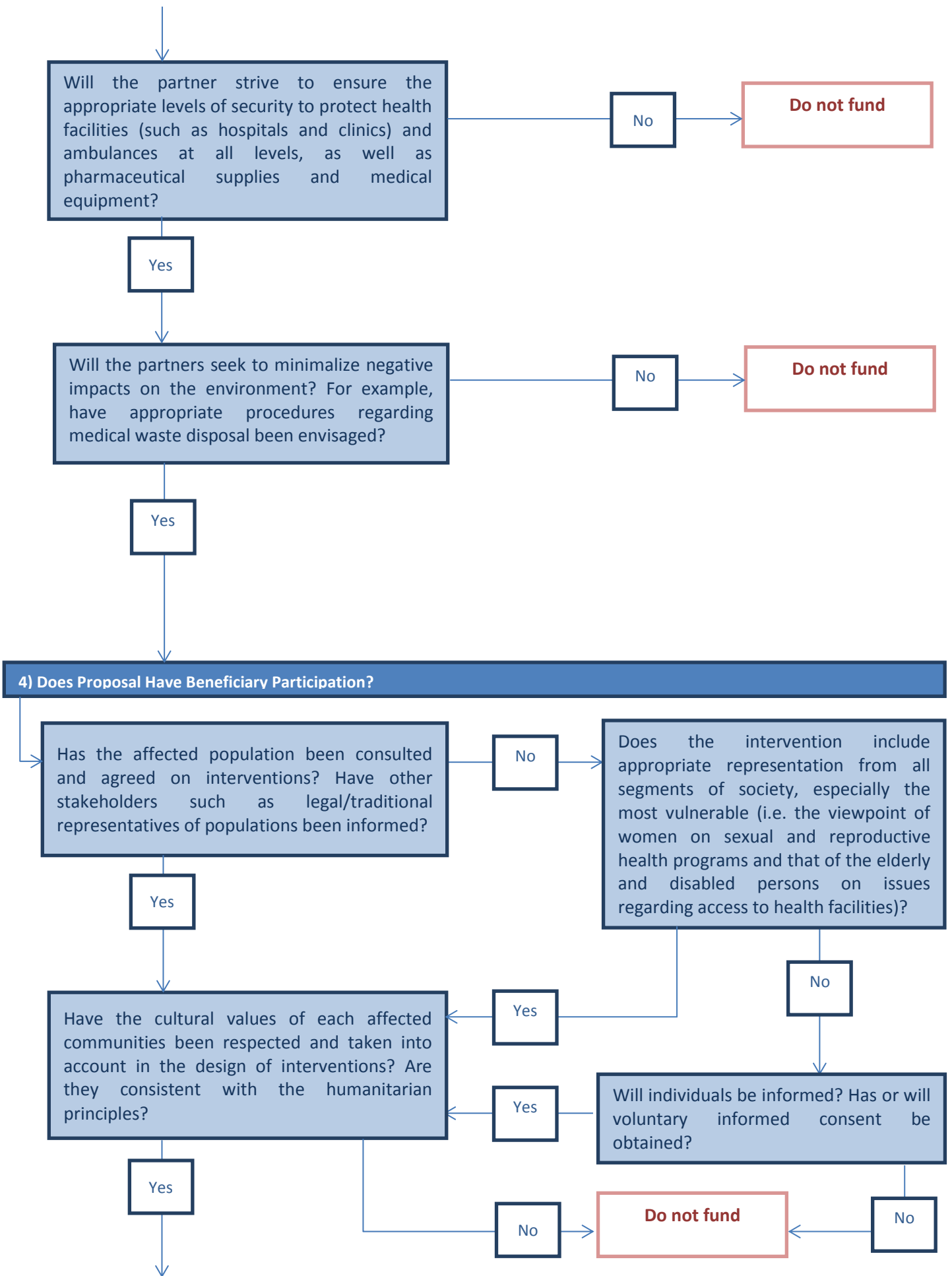


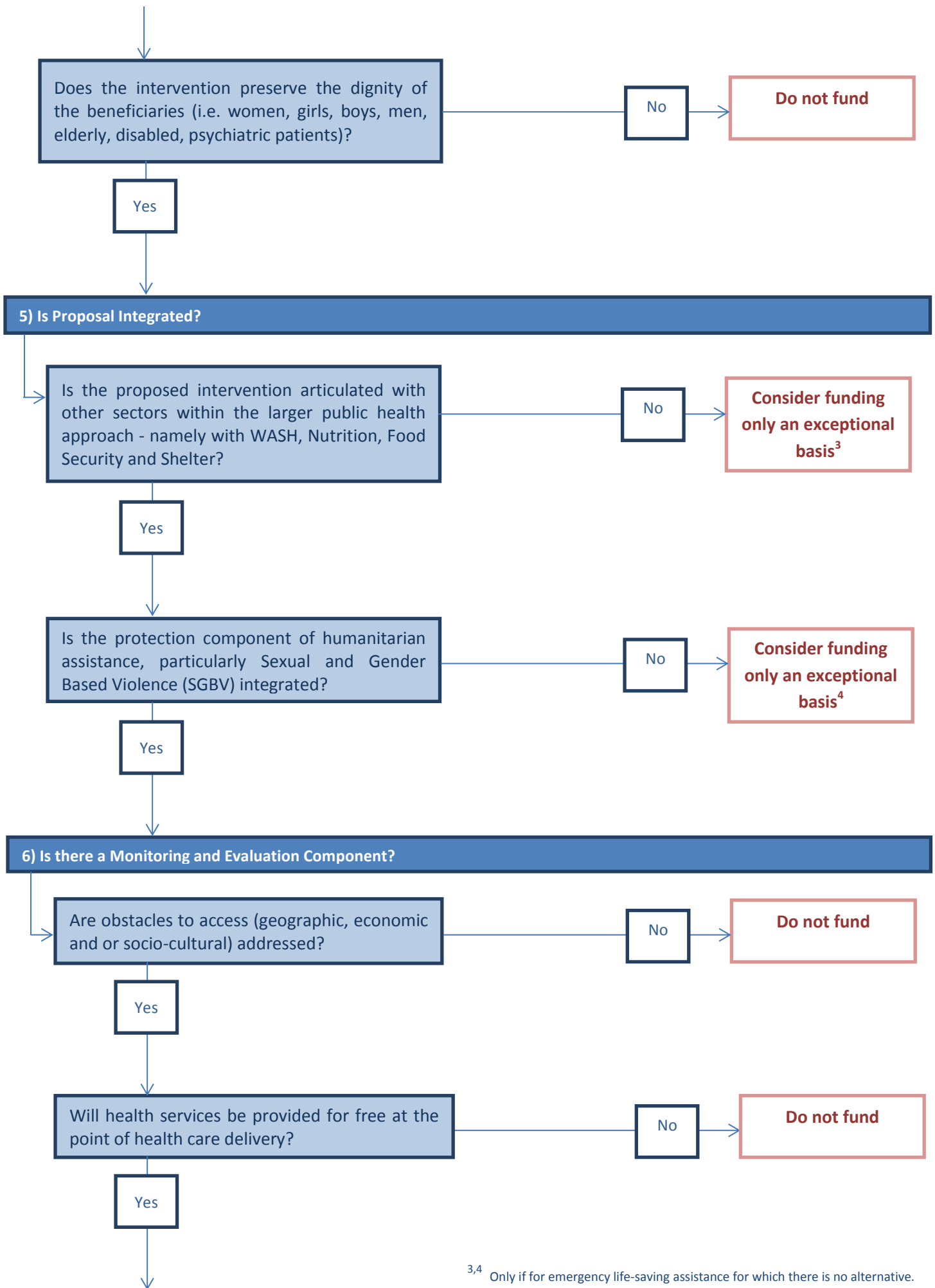


¹ Criteria would include: the appropriateness of DG ECHO comparative advantages in addressing the needs, and the clear and substantiated lack of alternatives (including advocacy); the gravity of the consequences of DG ECHO not engaging being greater than those of a DG ECHO engagement which, having started, cannot be sustained; and a clear communication on the limitations for any sustained DG ECHO engagement.

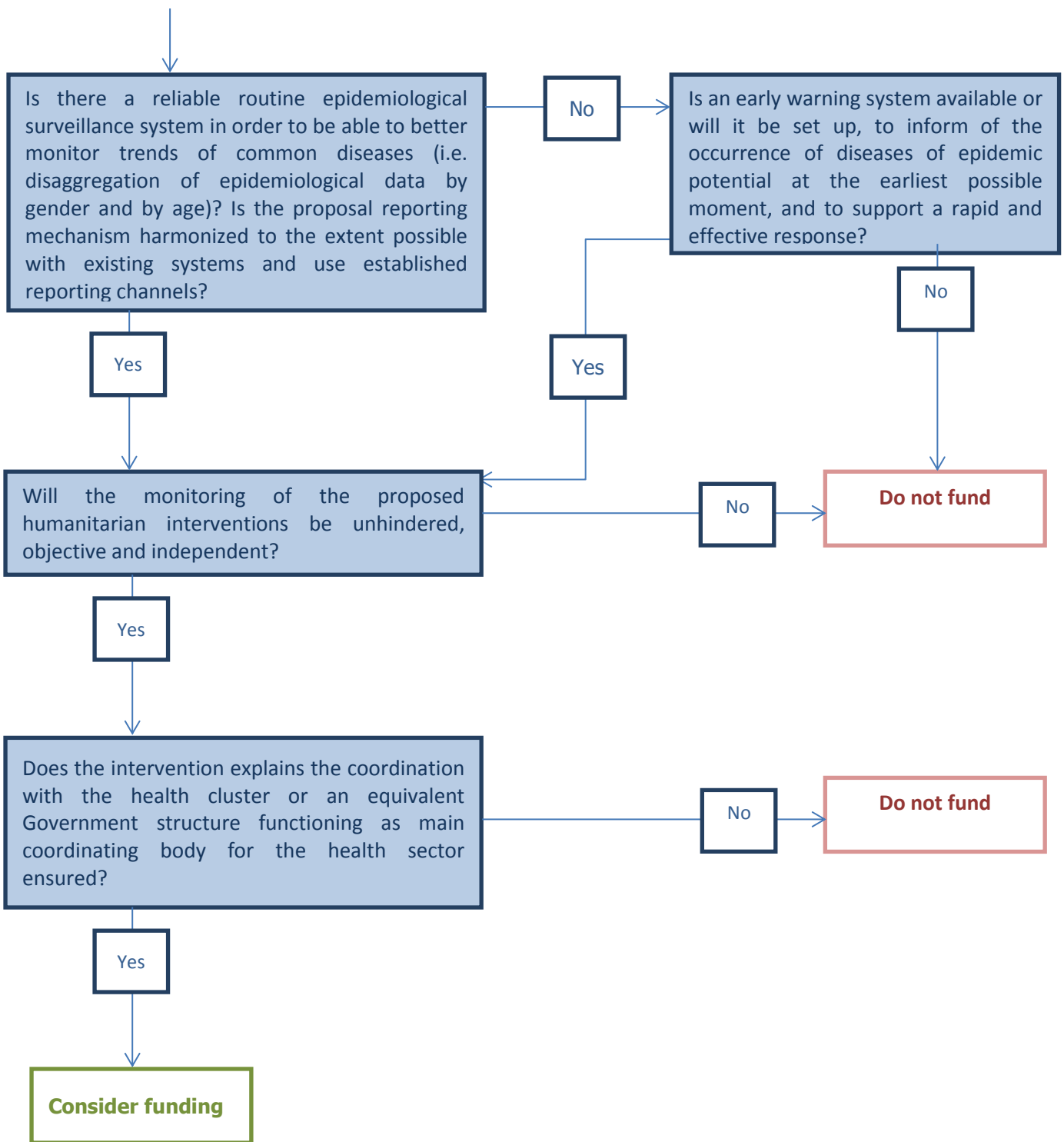
² For example a specific and detailed context related justification.







^{3,4} Only if for emergency life-saving assistance for which there is no alternative.



7) An INSTITUTIONAL HEALTH CAPACITY BUILDING intervention in benefit of Commission humanitarian implementing partners.

