

# Atmosphere monitoring Service (MACC/-II)

Access to GMES services

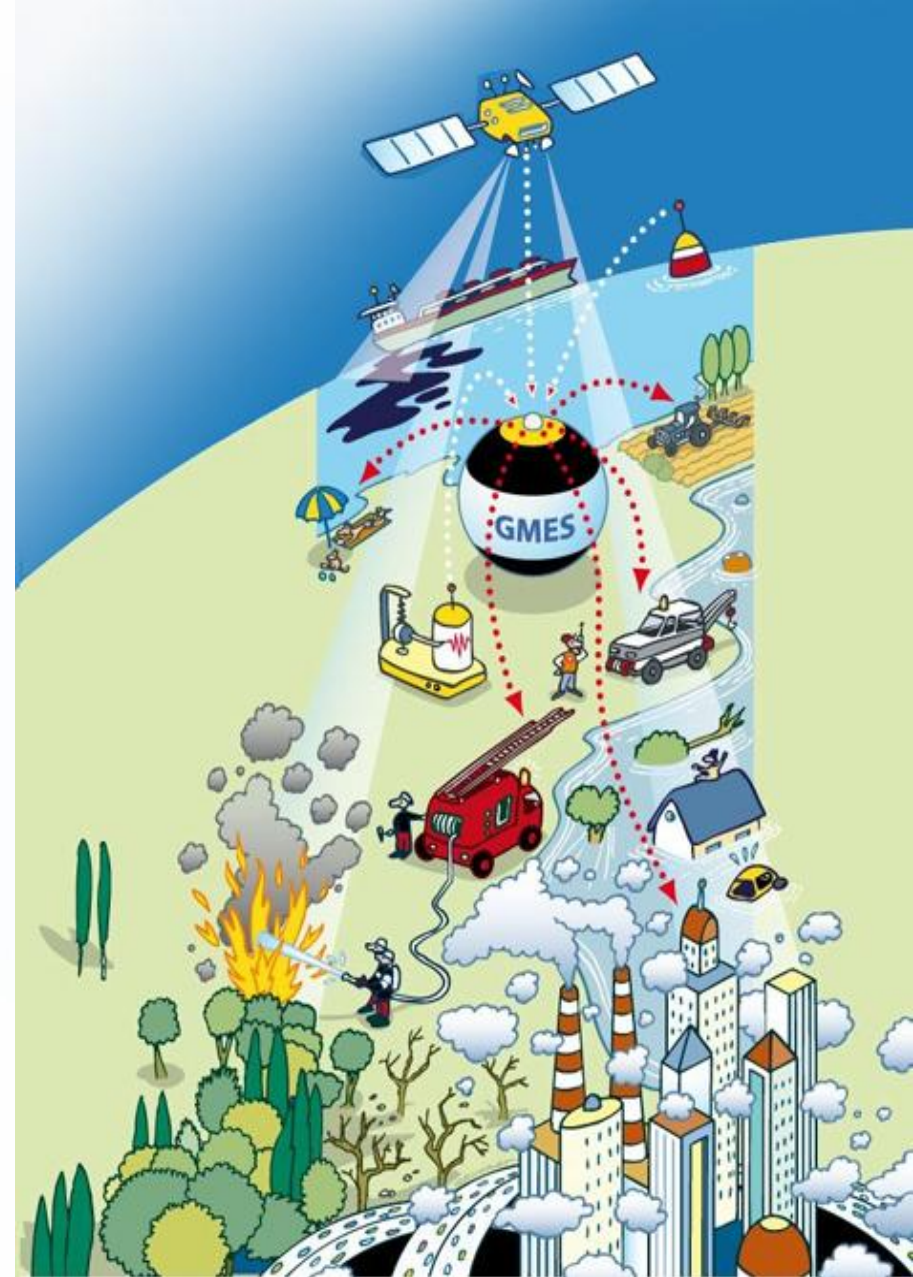
*Vincent-Henri Peuch, ECMWF*  
*MACC-II co-ordinator*



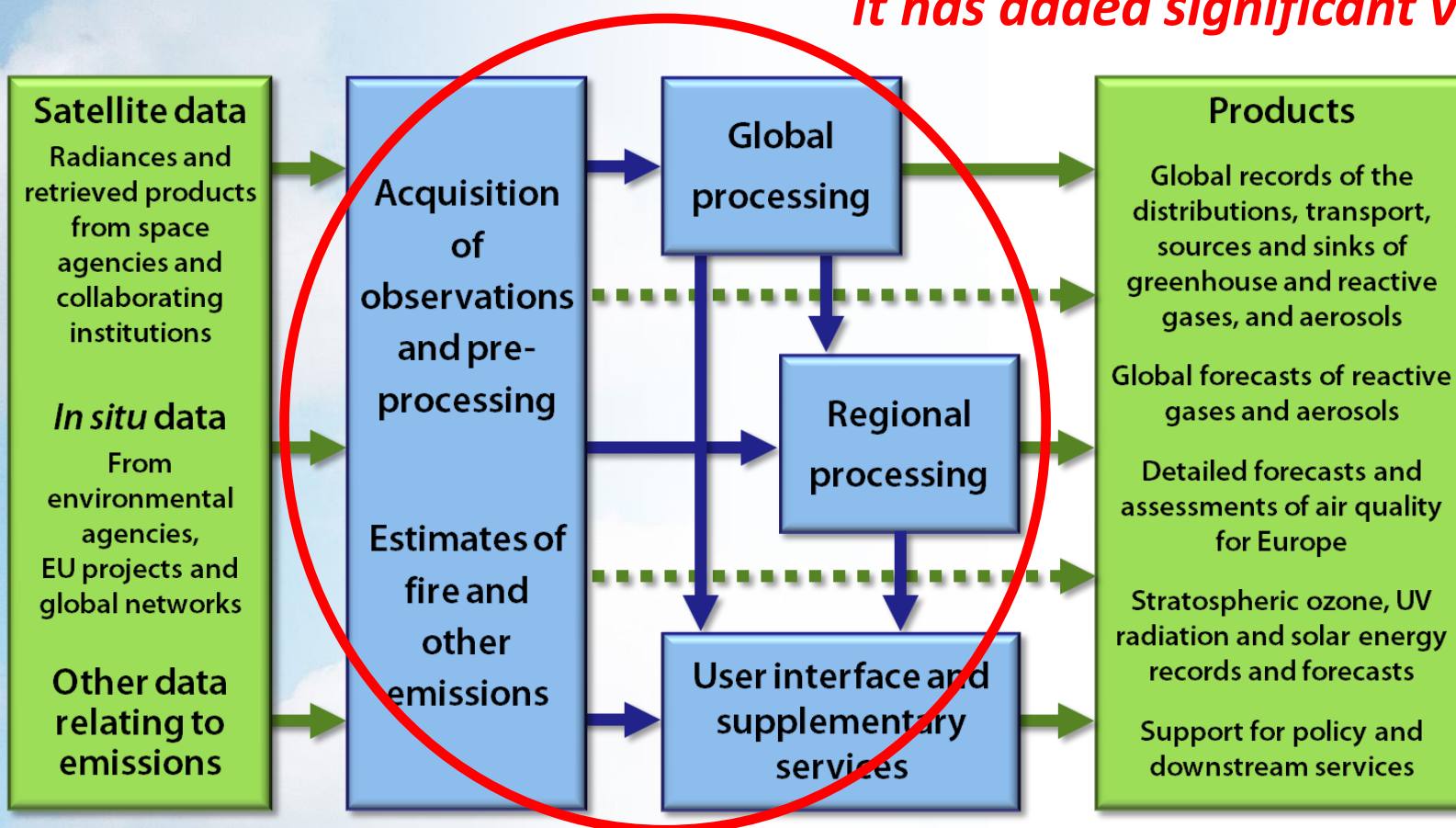
Helping  
Europe  
**respond** to  
**climate**  
**change** and  
**poor**  
**air quality**



- **MACC/MACC-II (Monitoring Atmospheric Composition and Climate)** is a component of GMES program focusing on atmospheric composition
- **As for the other thematic areas, the atmospheric programme comprises**
  - developing operational space-based observation of constituents (Sentinels 5P, 4 and 5)
  - strengthening the provision of *in situ* observations (GISC)
  - developing and operating associated data and information services (MACC, MACC-II)
  - downstream (PASODOBLE, ENDORSE, OBSAIRVE...) and supporting projects (NORSE....)



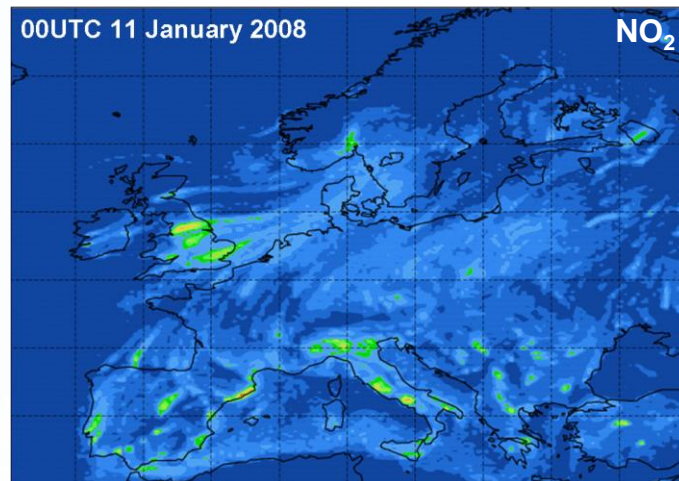
***MACC/MACC-II only distributes data and information for which it has added significant value.***



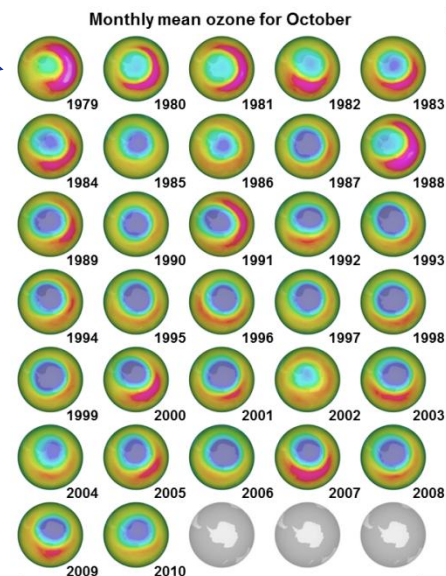




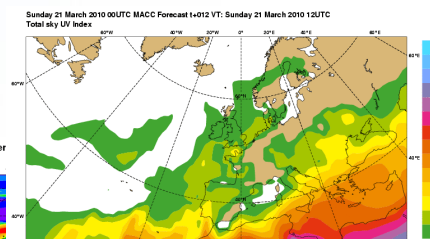
**Air-quality  
forecast**



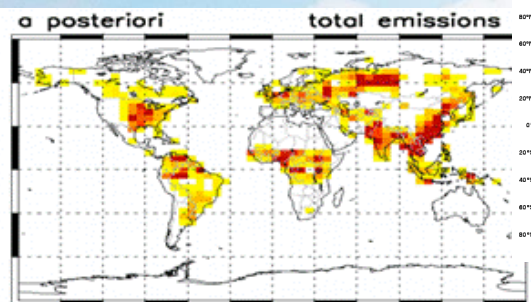
**Stratospheric  
ozone records**



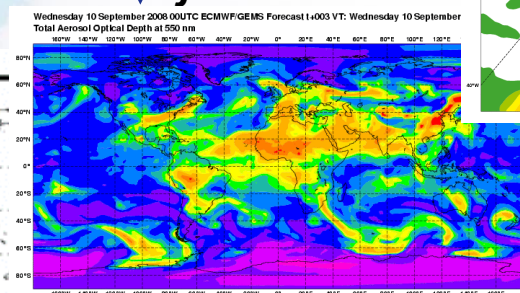
**UV index**

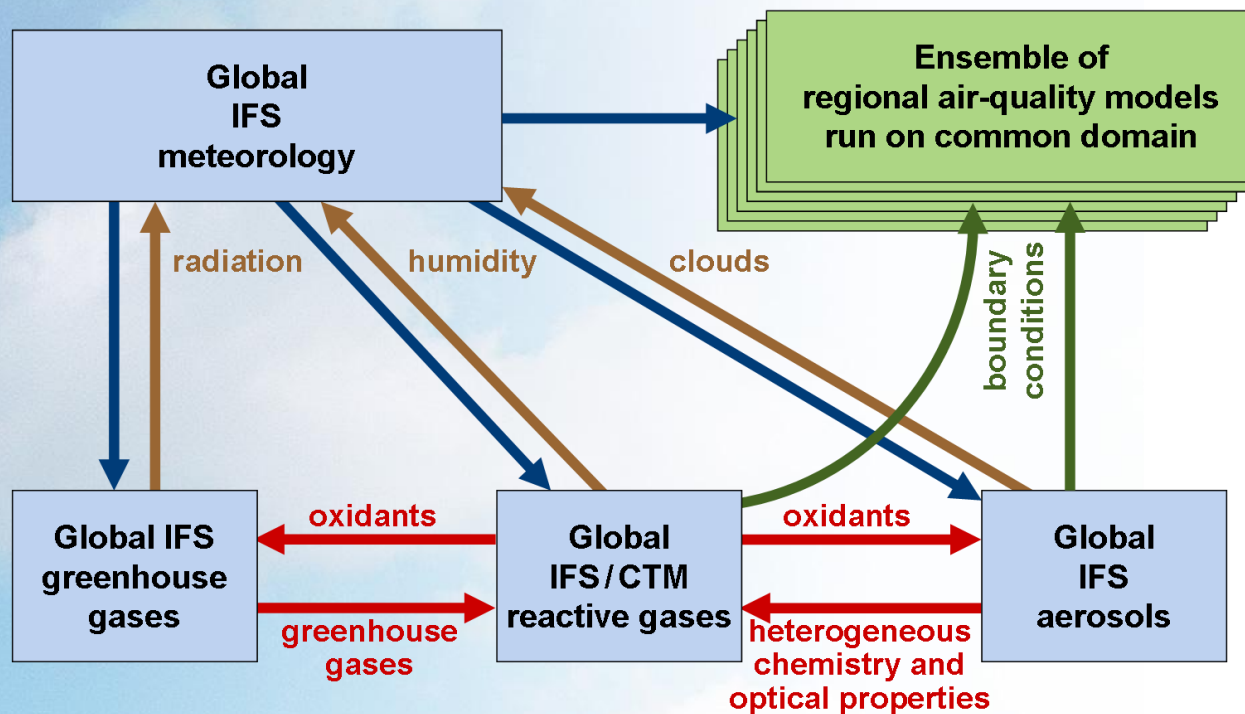


**Monthly methane  
emissions**



**Aerosol  
forecast**





*A multi-model ensemble of regional chemistry and transport models distributed in 6 European countries.*

3 streams :

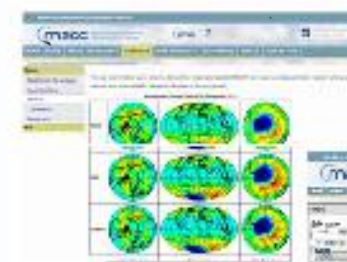
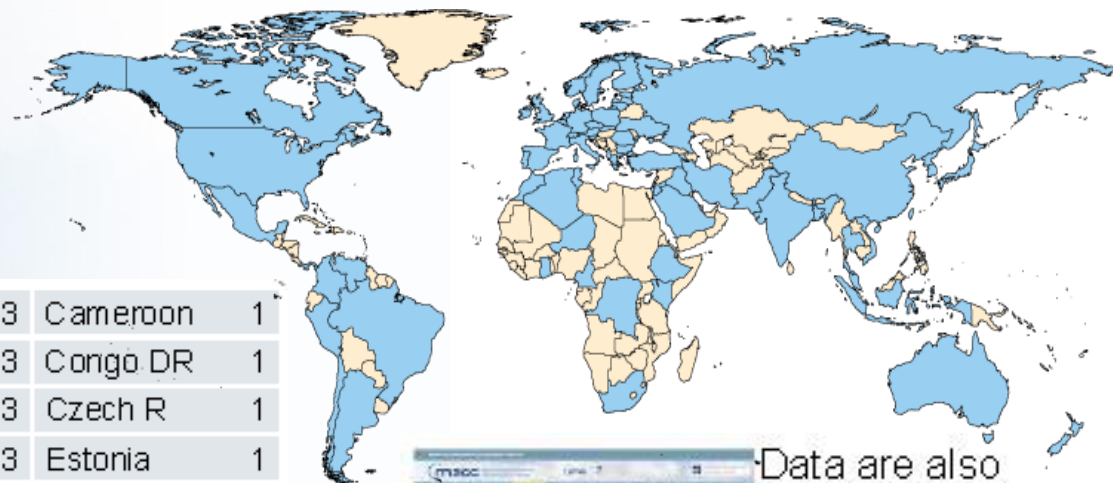
- NRT analyses and forecasts
- Delayed mode (6m-1y) analyses
- Re-analyses 2003-...

*A global integrated system based on ECMWF meteorological model and including composition.*



# Worldwide users (ECMWF servers access by institutions, Nov. 2011)

China	103	Portugal	10	Austria	3	Cameroon	1
Germany	67	Australia	9	Chile	3	Congo DR	1
UK	64	Norway	9	Colombia	3	Czech R	1
France	57	Turkey	9	Ghana	3	Estonia	1
USA	52	Belgium	8	Malta	3	Hong Kong	1
Italy	24	Canada	7	Morocco	3	Iraq	1
Spain	24	Lithuania	7	New Zealand	3	Jordan	1
India	23	Taiwan	7	Slovakia	3	Kenya	1
Japan	18	Ukraine	7	South Africa	3	Latvia	1
Netherlands	18	Poland	6	Bangladesh	2	Malaysia	1
Brazil	16	South Korea	6	Ethiopia	2	Mexico	1
Russia	13	Denmark	5	Israel	2	Niger	1
Romania	12	Viet Nam	5	Pakistan	2	North Korea	1
Greece	11	Bulgaria	4	Slovenia	2	Panama	1
Indonesia	11	Finland	4	Thailand	2	Peru	1
Sweden	11	Ireland	4	Albania	1	Singapore	1
Switzerland	11	Saudi Arabia	4	Algeria	1	Tunisia	1
Iran	10	Argentina	3	Armenia	1	Venezuela	1

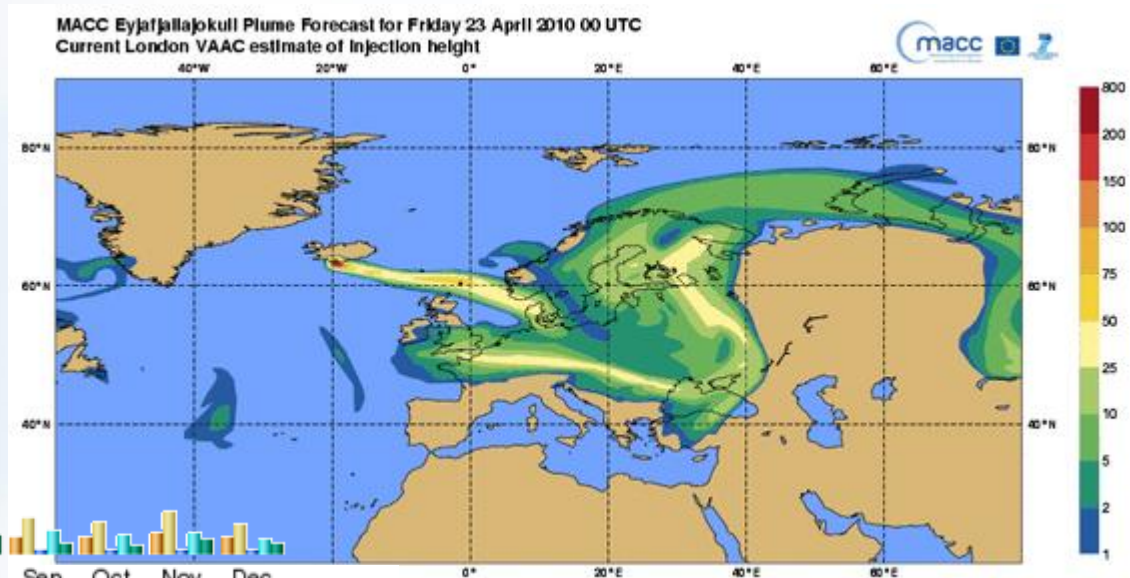
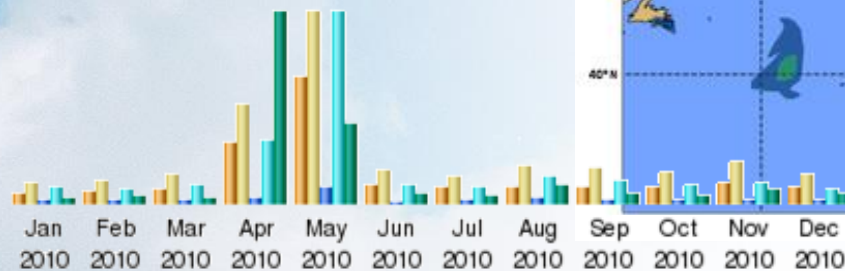


Data are also served by other project partners



~25 Service Level Agreements

# Environmental “events” and MACC users



MACC information pages for the Eyjafjoll (Island-mountain) eruption drew a lot of interest with more than 10,000 unique visitors in May 2010.

# Users and data policy

*Caveat:* FP6 or FP7 (RTD or CP/CSA) projects are not an ideal context for addressing fully these aspects. In particular, it is not possible to commit beyond the time span of each individual project and significant latitude is only available when submitting a new project. Yet, it makes some aspects simpler.

## Two types of user interaction:

- Interaction through **Service Level Agreements**, where a user and a service line leader agree terms and conditions, including quality insurance (within the framework of free and open access to data produced by GMES services, and using as much as possible a standard “template”). The primary goal is to set up and maintain feedback loops, not at all to restrain access in any way.
- **Open data server**, with minimal “questionnaire” for registration (e-mail, name, affiliation and purpose of use of the data) . An internal agreement loop initially set-up has been removed (criteria?). It is requested (but not enforced) that MACC/MACC-II, EC/FP7 and GMES are referenced in communication of any form.



# Atmospheric composition data and meteorological data

---

Meteorological data (forecasts, analyses, re-analyses) is out of the scope and funding of GMES. Thus, different data policy apply to atmospheric composition (or related) “GMES Service” data and to meteorological data:

- **GMES services data** are free and open. Most products are available in graphical form on the atmosphere Service website. Numerical data are available mainly on three data servers/archives: one at ECMWF (global products and back-up for regional products, ftp server), one at Météo-France (regional products, ftp server) and one at Jülich Research Centre (additional global products, OGC server).
- Access to **meteorological data** follows the data policy of each provider. Data policies and views on the economical model for meteorology are diverse throughout Europe and, in particular, the data policy of ECMWF results from the decisions of its Council (composed of its Member States).

# Users and data policy

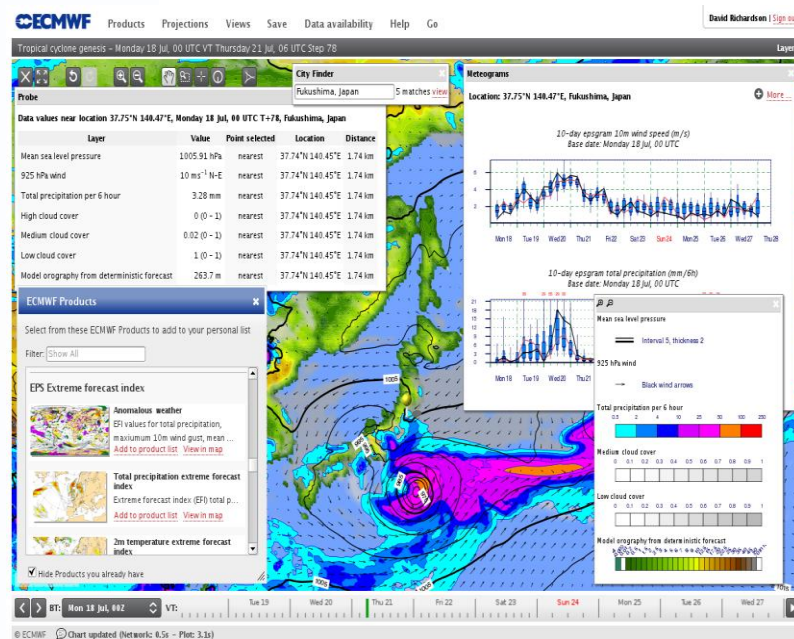
## ■ 'Full' access

- National Met Services of Member and Co-operating States
- Those licensed by the NMSs (private sector service providers and end users)
- Those licensed directly by ECMWF (outside Europe)

## ■ Restricted or time-limited access

- By license to WMO NMHSs for 'Official Duty' use
- Subsets labelled "WMO-additional" (to NMHSs worldwide) and "WMO-essential" (freely available)
- Disasters / humanitarian needs / developing countries

## ■ Graphical products available via [www.ecmwf.int](http://www.ecmwf.int)



# Conclusions

---

- MACC and its successor project MACC-II (until July 2014) **deliver products** on the regional and global scales and is already in readiness for the operational phase of GMES atmospheric services.
- MACC is the effort of an **entire consortium**. Only a limited number of partners actually run pre-operational systems and deliver products to users, but we rely on wider research activities (developments, algorithms, validation...) that are essential to maintain at the best international level, very much like it is the case for operational NWP. The concept of “service chain” is important.
- MACC/MACC-II have implemented a **free and open data policy** for the products developed and operated in their context, though FP European funding requires co-investing by projects’ beneficiaries.
- There is a **grey zone** between “atmosphere services” and “meteorology”, making it sometimes difficult to understand for users in need of elements from both.
- The lack of visibility and associated uncertainty on the **sustainable funding** phase is a major to issue to really go forward with the GMES Data Policy.



Website:

<http://www.gmes-atmosphere.eu>

Contact:

[info@gmes-atmosphere.eu](mailto:info@gmes-atmosphere.eu)

# The MACC-II Portfolio

Stream	Scale	Category	Product
NRT and forecast	Global	GHG	<b>Forecasts of key global greenhouse gases</b>
		RG	<b>NRT analyses and forecasts of global reactive gases</b>
			<i>SACADA assimilated NRT global stratospheric ozone</i>
			<i>BASCOE assimilated NRT global stratospheric ozone, HNO<sub>3</sub>, H<sub>2</sub>O, HCl, N<sub>2</sub>O, CH<sub>5</sub></i>
			<i>TM3DAM global total ozone monitoring and forecast</i>
			<b>NRT ozone &amp; NO<sub>2</sub> data from OMI, SCIAMACHY, GOME &amp; GOME-2</b>
		Aerosol	<b>NRT analyses and forecasts of global aerosol</b>
			<b>SYNAER NRT aerosol &amp; PM data</b>
			<b>ATSR-DV global aerosol</b>
			<b>SEVIRI aerosol data</b>
	Regional	Emissions	<b>NRT Biomass burning emissions based on observed Fire Radiative Power (FRP), GFASv0 and v1.0</b>
		Solar	<b>Global solar UV index monitoring and forecast</b>
		Aerosol	<b>Dust NRT regional monitoring based on satellites &amp; the Aeronet network</b>
			<b>ATSR-DV NRT aerosol over Europe</b>
		AQ	<b>European-scale ensemble hourly AQ analyses of the previous day and forecast up to 72h ahead</b>
			<i>European-scale hourly AQ analyses of the previous day and forecast up to 72h ahead (CHIMERE)</i>
			<i>European-scale hourly AQ analyses of the previous day and forecast up to 72h ahead (EMEP)</i>
			<i>European-scale hourly AQ analyses of the previous day and forecast up to 72h ahead (EURAD)</i>
			<i>European-scale hourly AQ analyses of the previous day and forecast up to 72h ahead (LOTOS-EUROS)</i>
			<i>European-scale hourly AQ analyses of the previous day and forecast up to 72h ahead (MATCH)</i>
			<i>European-scale hourly AQ analyses of the previous day and forecast up to 72h ahead (MOCAGE)</i>
			<i>European-scale hourly AQ analyses of the previous day and forecast up to 72h ahead (SILAM)</i>
			<b>Web-oriented warning &amp; information system about health impacts of poor AQ (preoperational)</b>
			<b>Origin of forecasted pollution episodes (graphic presentation)</b>
			<b>Regional AQ forecasts with source-allocation capabilities (web-based)</b>

Main products, **Obs. products**, *Additional products*

# The MACC-II Portfolio (continued)

Stream	Scale	Category	Product
Delayed	Global	GHG	Reprocessed analyses of global GHG, RG & aerosol
			Global CH <sub>4</sub> source & sink inversions
			Global CO <sub>2</sub> source & sink inversions
			Stand-alone CO <sub>2</sub> & CH <sub>4</sub> retrievals from AIRS & IASI over 2003-2010
		Aerosol	Reprocessed analyses of global aerosol
			SYANER aerosol & PM data record
		Emissions	Updated inventory of global emissions based on RETRO
			Biomass burning emissions based on observed Burnt Area for 2010 (GFED3.1)
		Solar	HELIOCLIM archive of surface solar irradiance
			SOLEMI archive of surface solar irradiance
Reanalysis	Global	Regional AQ	Library of test cases for AQ emergency scenarios
			Updated inventory of European emissions by TNO
		GHG	Extension of GEMS global GHG reanalysis to 2009
			Global GHG reanalysis over 2003-2010
		RG	Extension of GEMS global RG reanalysis to 2009
			Global RG reanalysis over 2003-2010
		Aerosol	SACADA, BASCOE, TM3DAM assimilated historical global stratospheric ozone and other species
			Extension of GEMS global aerosol reanalysis to 2009
		Emissions	Global aerosol reanalysis over 2003-2010
			Biomass burning emissions based on observed Burnt Area (BA) for 1997-2009 (GFED3.1)
Other	G. + Reg.	Technical	Biomass burning emissions based on assimilated Fire Radiative Power (FRP) since 2003 (GFASv1.0)
		AQ	Ensemble regional AQ reanalysis (hourly) for Years 2007, 2008 & 2009 <i>Regional AQ reanalysis for Years 2007, 2008 &amp; 2009 with CHIMERE, EMEP, EURAD, LOTOS-EUROS, MATCH, MOCAGE, SILAM</i>
Other	Regional	Technical	Web-based graphical display and supply of data from global MACC production, monitoring and validation
		AQ	Toolbox for AQ emergency scenarios (via web)