

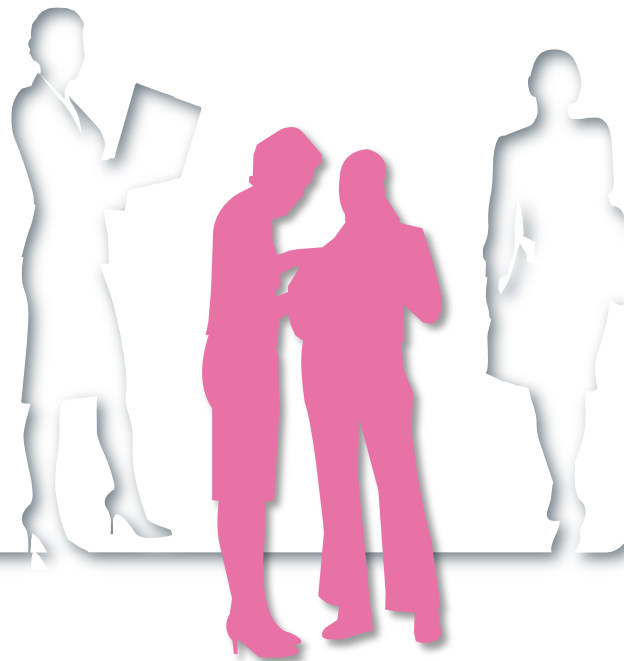
THE EURO-MED CHARTER/SBA ASSESSMENT KEY FINDINGS

**DIM. 1: ENTREPRENEURIAL LEARNING AND TRAINING
FOR WOMEN ENTREPRENEURSHIP**

DIM. 8.1: ENTREPRISE SKILLS

**EVA JIMENO SICILIA, HEAD OF SEMED UNIT
ETF**

BRUSSELS, 22 JANUARY 2014



MOVING FORWARD WITH DEFINITIONS

ENTREPRENEURIAL LEARNING

'ALL FORMS OF EDUCATION AND TRAINING, BOTH FORMAL AND NON-FORMAL, WHICH CONTRIBUTE TO AN ENTREPRENEURIAL SPIRIT AND ENTREPRENEURIAL BEHAVIOUR WITH OR WITHOUT A COMMERCIAL OBJECTIVE.' (ETF, 2009).

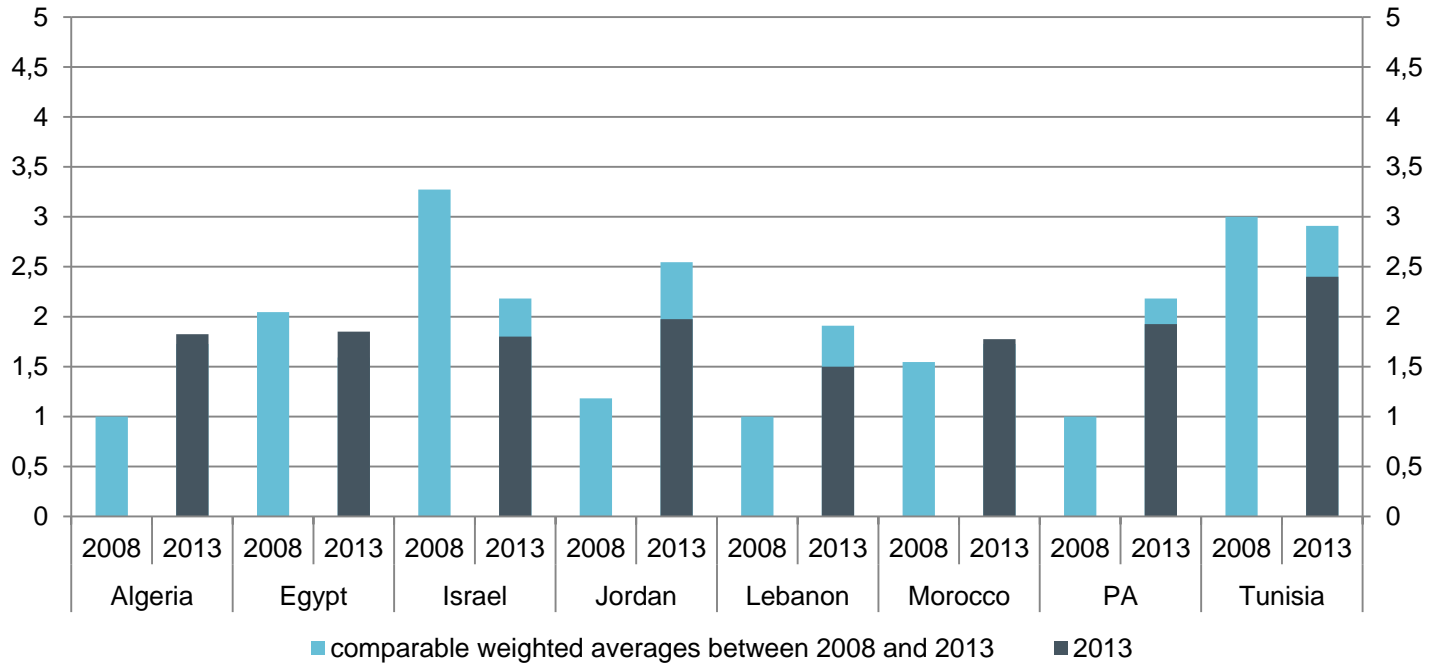
ALL LEVELS OF EDUCATION

ALL SUB-SYSTEMS OF EDUCATION

ENTREPRENEURSHIP AS A KEY COMPETENCE.: BEYOND PURE BUSINESS ORIENTATION AND INVOLVING BEHAVIOURAL AND COGNITIVE ISSUES

DIMENSION 1: 2008(5) AND 2013 (9)

1. Entrepreneurial learning



KEY FINDINGS IN THE REGION: DIMENSION 1

A POLICY JOINED UP POLICY FRAMEWORK ON ENTREPRENEURSHIP REMAINS A CHALLENGE DESPITE INCREASED AWARENESS ON ITS IMPORTANCE

LIMITED LEADERSHIP BY **EDUCATION MINISTRIES** TO ENTREPRENEURIAL LEARNING DEVELOPMENT

EXCELLENT DEVELOPMENT OF **GOOD PRACTICES**, MAINLY THROUGH PROJECTS (MANY OUTSIDE FORMAL EDUCATION)

POST SECONDARY SEEMS TO BE MORE ADVANCED THAN SECONDARY (DIRECT LINKS TO EMPLOYABILITY?)

THE ABOVE APPLIES TO **WOMEN ENTREPRENEURSHIP**: WEAK POLICY FRAMEWORK, BOTTOM UP NETWORKS EXIST, GOOD PRACTICES NOT SCALED UP, SCOPE FOR DEVELOPMENT OF TRAINING PROVISION, **ACCESS** IS A KEY ISSUE

DIMENSION 1: THE WAY FORWARD

REINFORCE POLICY MAKING : MORE LEADERSHIP AND POLICY INITIATIVE BY MINISTRIES OF EDUCATION

BUILD PARTNERSHIP AMONG GOVERNMENT (EDUCATION, EMPLOYMENT AND INDUSTRY), CIVIL SOCIETY AND THE PRIVATE SECTOR: **COORDINATION AND CONSULTATION**

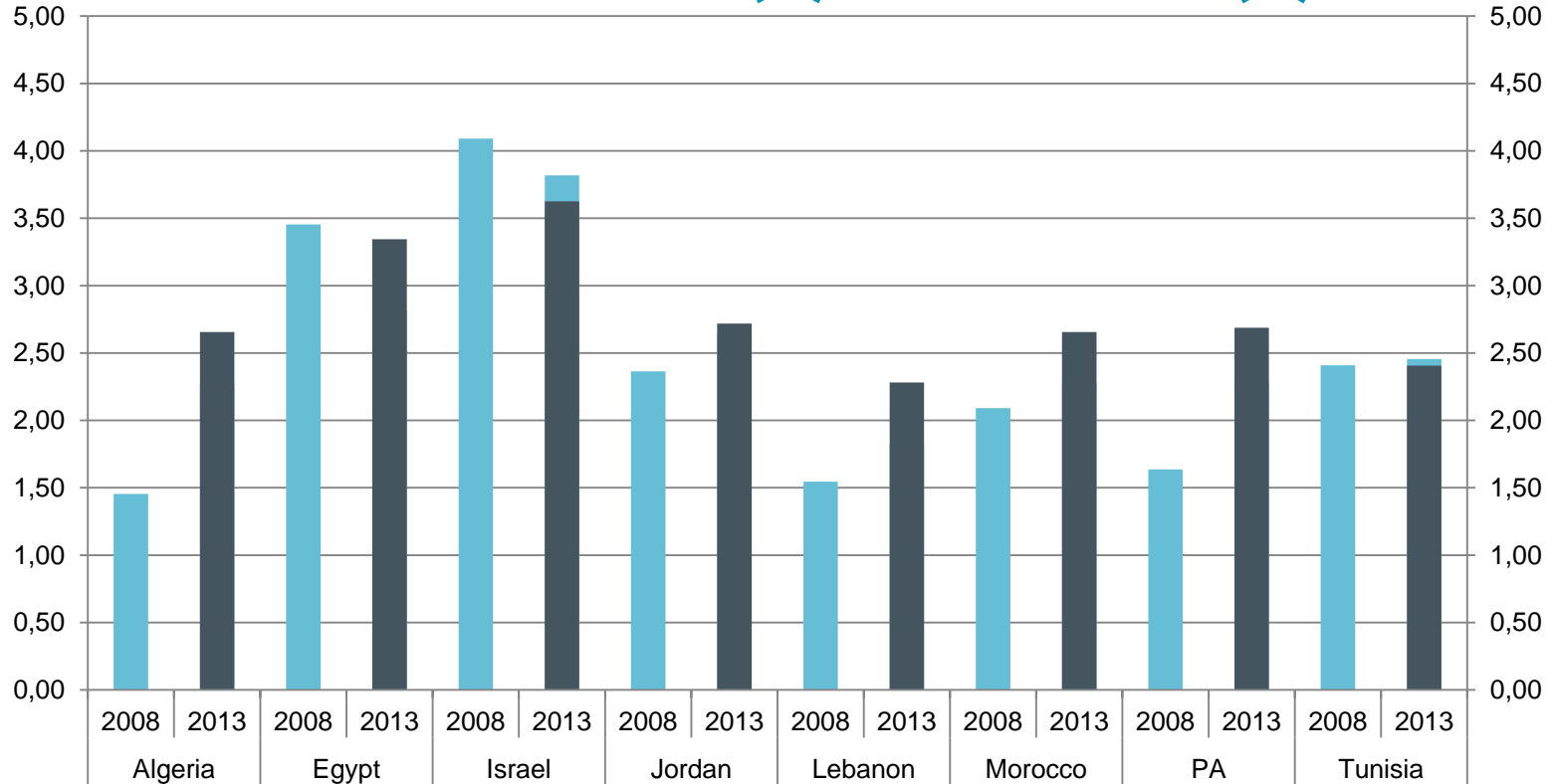
SUPPORT MORE STRATEGIC EXCHANGE OF QUALITY-ASSURED **GOOD PRACTICE** TO INFORM **POLICY DEVELOPMENTS** AND BECOME **STANDARD PRACTICES**

STRENGTHEN COOPERATION AMONG **HIGHER EDUCATION INSTITUTIONS** AND THEIR LINKS WITH **BUSINESS**

IMPROVE ACCESS FOR WOMEN (TO EDUCATION, CREDIT, MENTORING, COACHING)

DEVELOP ROLE MODELS AND CARRY OUT SPECIFIC TRAINING NEEDS ANALYSIS (FOCUS ON LEADERSHIP, IT SKILLS ,.....)

DIM. 8.1: 2008 (5) AND 2013 (8)



■ comparable weighted averages between 2008 and 2013 ■ 2013

KEY FINDINGS IN THE REGION: DIMENSION 8.1

AD HOC INITIATIVES, OFTEN SECTOR BASED, ON TRAINING NEEDS ANALYSIS

SUPPORT MEASURES FOR BUSINESS START-UPS AND GROWTH AVAILABLE. THOUGH ACCESS IS A DIFFERENT STORY (FUNDING; IDENTIFICATION NEEDS...). EFFICIENCY?

TRAINING FOR INTERNATIONALISATION WELL DEVELOPED

ONLINE TRAINING STILL VERY LIMITED (DESPITE ITS POTENTIAL TO IMPROVE ACCESS)

VERY WEAK AVAILABILITY OF DATA HEAVILY PENALISES SCORES

SCATTERED INITIATIVES ON SID

DIMENSION 8.1: THE WAY FORWARD

STATE – BUSINESS ESTABLISH **LONG-TERM PARTNERSHIP ON SKILLS DEVELOPMENT TO SYSTEMATICALLY ARTICULATE TRAINING NEEDS TO INFORM TRAINING DESIGN**

A FRAMEWORK FOR A **COMPREHENSIVE AND REGULAR TNA** IS SET UP

BUILD ON CURRENT MECHANISMS SUPPORTING SMES TO **SYSTEMATICALLY COLLECT DATA** ON SKILLS NEEDS AND ACCESS TO TRAINING

EVALUATION OF EFFICIENCY OF CURRENT MECHANISMS

KEY MESSAGES

- SECOND CHARTER ASSESSMENT **SHOWS LIMITED PROGRESS** (NEED TO CONSIDER THE DIFFICULT SITUATION DURING THE ASSESSMENT PERIOD) TOWARDS AN EL POLICY FRAMEWORK
- **JOINED UP POLICY FRAMEWORKS** TO PROMOTE ENTREPRENEURSHIP ARE STILL WEAK - TO THE EXPENSE OF COORDINATION , FOCUS AND IMPACT
- **PARTNERSHIPS** AMONG DIFFERENT GOVERNMENT AGENCIES/MINISTRIES, PRIVATE SECTOR AND CIVIL SOCIETY ARE ON THE MAKING (AD HOC)
- **SYSTEMATIC INTELLIGENCE ON SMES STILL MISSING** (NEEDED TO ESTABLISH NECESSARY POLICIES, SUPPORT STRUCTURES AND TRAINING - OTHERWISE **IMPACT, EFFICIENCY ARE ?**)
- **GOOD AVAILABILITY** OF TRAINING AND SUPPORT SERVICES (MAINLY IN MAIN CITIES) AND SUPPORT SERVICES - HOWEVER **ACCESS IS AN ISSUE**
- **WEALTH OF GOOD PRACTICES AND BOTTOM UP INITIATIVES:** SCALE UP THROUGH STRATEGIC SHARING, COORDINATION AND CONSULTATION
- **WOMEN ENTREPRENEURSHIP REFLECTS THE ABOVE IN ACCENTUATED WAY:** POLICY FRAMEWORK TOO WEAK TO ENSURE IMPACT; ACCESS EVEN MORE AN ISSUE, NEED FOR SPECIFIC NEEDS ANALYSIS

ETF FOLLOW UP IN 2014

CONTRIBUTE TO **DISSEMINATION OF ASSESSMENT RESULTS** IN REGIONAL AND NATIONAL EVENTS

LINK AND USE ASSESSMENT RESULTS **TO ETF ACTIVITIES** IN THE COUNTRIES

BRIDGE BETWEEN EDUCATION AND TRAINING AND SME ACTORS

CONTRIBUTE TO **POLICY DIALOGUE** ON EURO-MEDITERRANEAN INDUSTRIAL COOPERATION IN LINE WITH RECOMMENDATIONS FROM THE MINISTERIAL CONFERENCE

ORGANISE A **REGIONAL SEMINAR** FOR EXCHANGE OF GOOD PRACTICES EMERGED FROM ASSESSMENT AND HELP IDENTIFY SPECIFIC LINES FOR ACTION (IN COORDINATION WITH DEVCO ACTIONS)

FOR FURTHER INFORMATION

MS MARIAVITTORIA GARLAPPI

TEL: 0039.011.630.22.43

MVG@ETF.EUROPA.EU

WWW.ETF.EUROPA.EU