

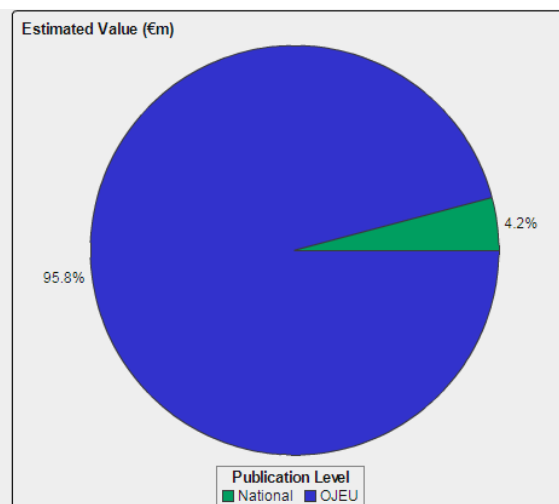
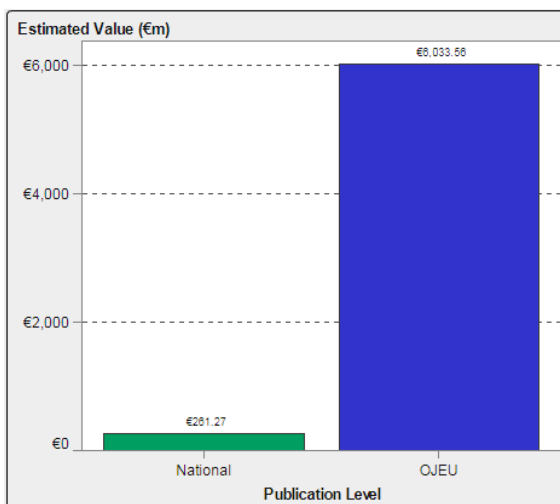
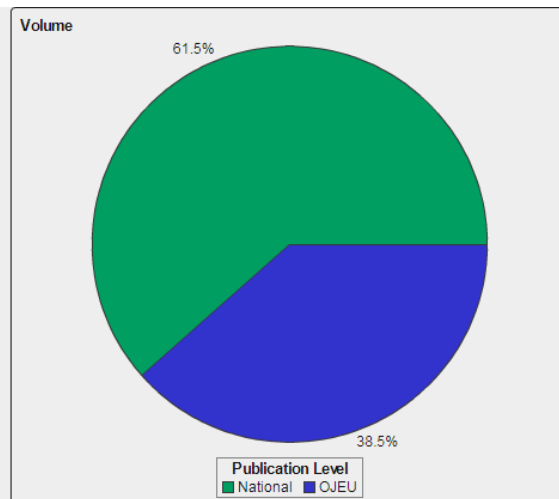
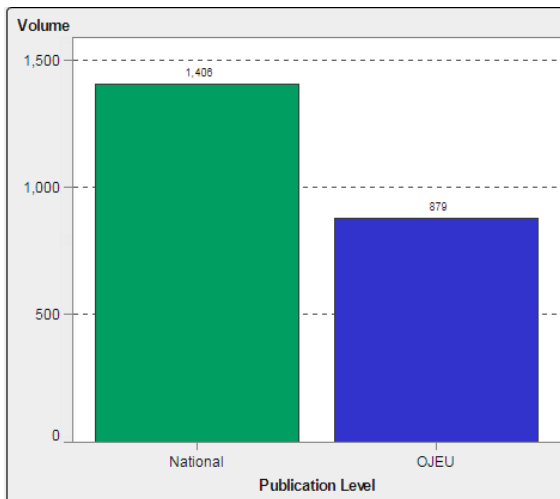
Contents

Section I.....	2
Section II.....	3
Section II.3 - quantitative.....	3
Section III.....	7
Section III.3 - quantitative.....	7
Section IV	10
Section IV.3 - quantitative.....	10
Section V	11
1- Green Procurement.	11
2- Socially responsible public procurement ('SRPP').....	11
3- Public procurement of innovation.....	11
Section VI	12

Section I

Below is the volume and estimated value of national (below the EU threshold) and OJEU (above the EU threshold) Contract Award Notices (CAN). The table shows that 61% of the 2,285 CAN's published in 2017 were at national level and account for 4% of the total estimated tender value. OJEU tenders account for 39% of CAN's and 96% of the estimated value.

Publication L... ▲	Volume	Estimated Value (€m)
National	1,406	€261.27
OJEU	879	€6,033.56
Total	2,285	€6,294.82



Section II

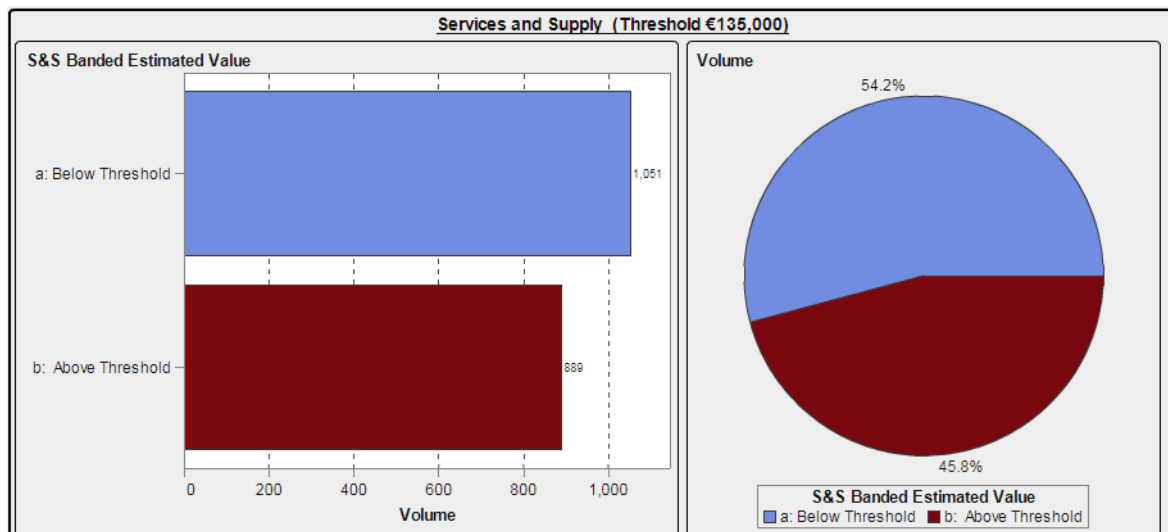
Section II.3 - quantitative

a- Services and Supply CAN's (Threshold €135,000)

The below table shows the volume and estimated value of above and below threshold competitions for Services and Supplies. Threshold for Services and Supplies in 2017 was €135,000.

S&S Banded...	a: Below Threshold		b: Above Threshold		Total	
Contract Type	Volume	Estimated Value (€m)	Volume	Estimated Value (€m)	Volume	Estimated Value (€m)
Services	689	€30.42	611	€2,906.12	1,300	€2,936.55
Supplies	362	€15.55	278	€1,668.61	640	€1,684.16
Total	1,051	€45.97	889	€4,574.73	1,940	€4,620.70

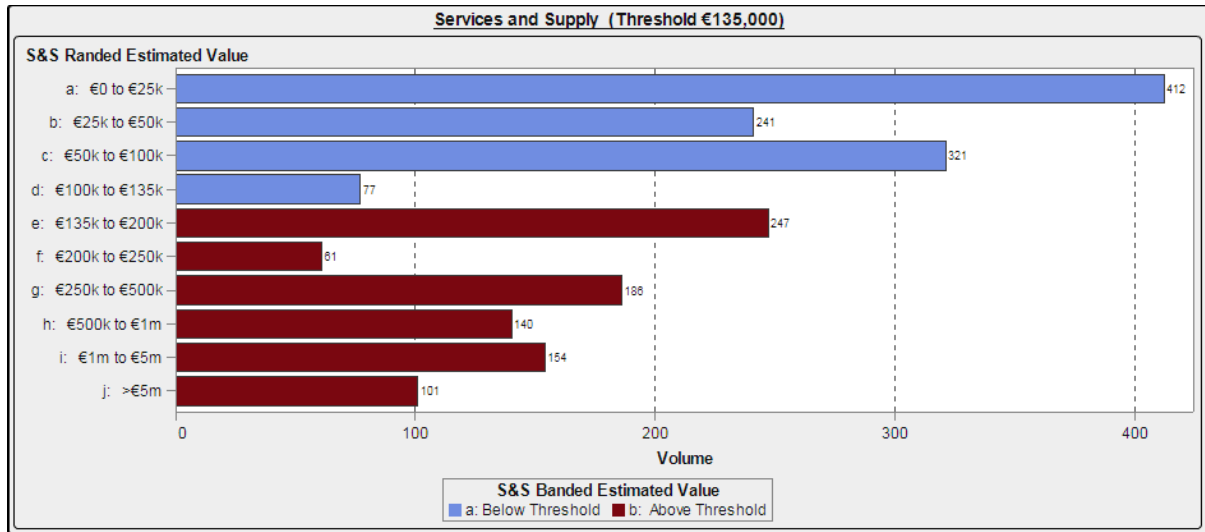
The bar and pie charts below show a graphic representation of the volume figures. The below threshold competitions are 54.2% of the total number of competitions run while above threshold is 45.8%.



This histogram shows the monthly breakdown for above and below threshold. It shows that all months had more below threshold competitions with the exception of August.



The Below splits up the Thresholds into banded figures

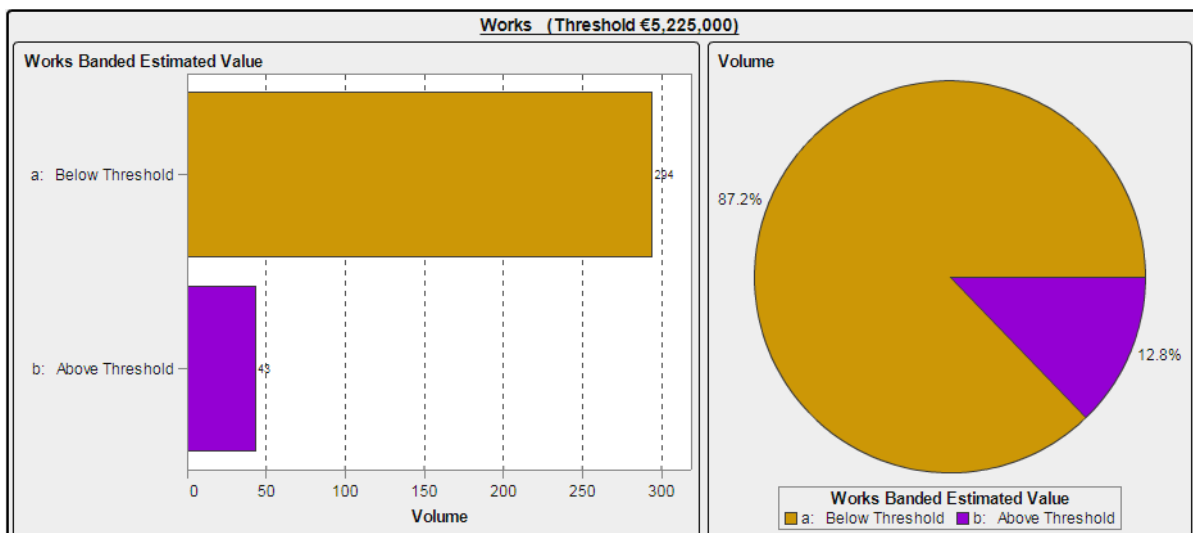


b- Works CAN's (Threshold €5,225,000)

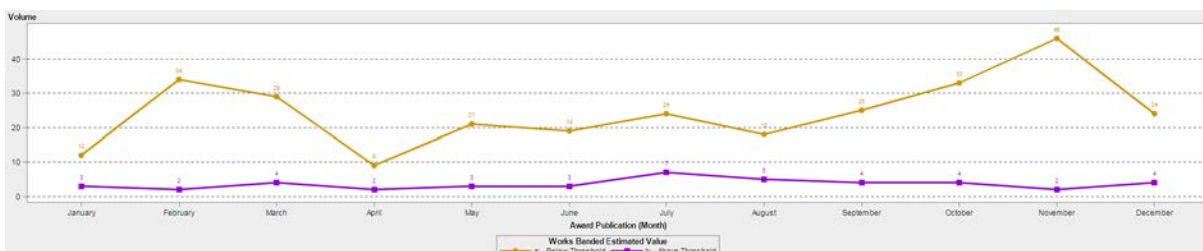
The below table shows the volume and estimated value of above and below threshold competitions for Works. Threshold for Works in 2017 was €5,225,000.

Works Band... ▲	a: Below Threshold		b: Above Threshold		Total	
Contract Type ▲	Volume	Estimated Value (€m)	Volume	Estimated Value (€m)	Volume	Estimated Value (€m)
Works	248	€137.14	32	€1,126.48	280	€1,263.62

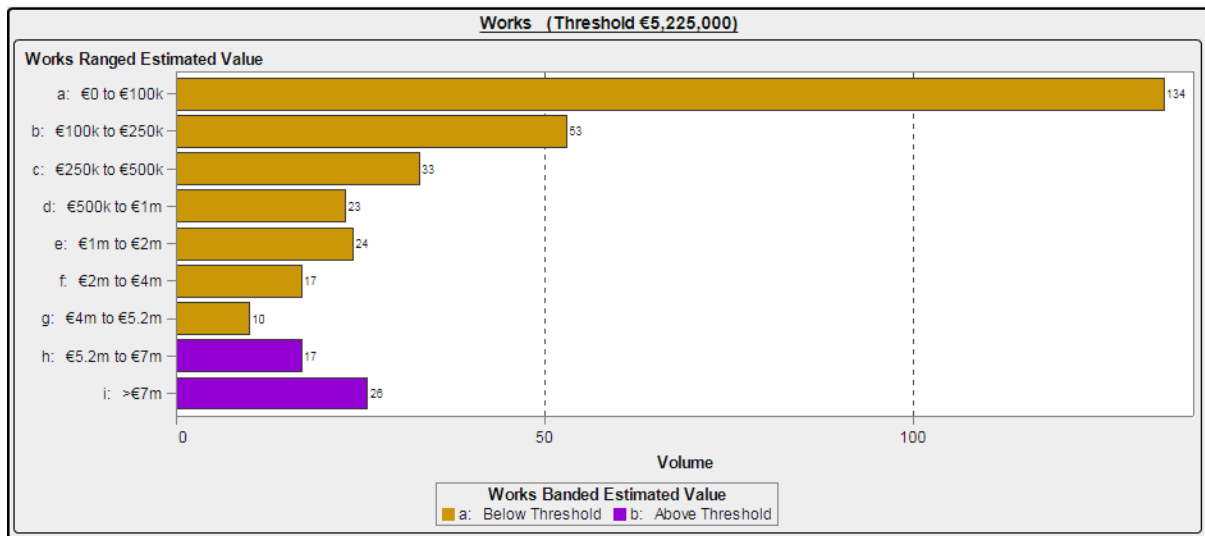
The bar and pie charts below show a graphic representation of the volume figures. The below threshold competitions are 87.2% of the total number of competitions run while above threshold is 12.8%.



This histogram shows the monthly breakdown for above and below threshold. It shows that all months had more below threshold competitions than above threshold.



The Below splits up the Thresholds into banded figures



Section III

Section III.3 - quantitative

Below is a list of contracting authorities that have at least 3 awarded competitions and compares how many had just 1 bid. OJEU competitions only.

Contracting Authority	Comps Run	Awards Given	1 Bid	1 Bid %
Air Corps Contracts Section	6	3	2	67%
An Garda Síochána	9	4		0%
An Post	11	11		0%
Beaumont Hospital	24	17	1	6%
Bord Altranais agus Cnáimhseachais na hÉireann/Nursing and Midwifery Board of Ireland	3	3		0%
Bord Bia (Irish Food Board)	31	14	2	14%
Bord Iascaigh Mhara - Irish Sea Fisheries Board (BIM)	6	3	2	67%
Bord Na Mona	9	3		0%
Bus Eireann/Irish Bus	11	3		0%
Central Bank of Ireland	11	11	1	9%
Commission for Regulation of Utilities	8	4	1	25%
Commissioners of Irish Lights	2	3		0%
Cork County Council	30	8	1	13%
Curragh Racecourse Ltd	1	10	2	20%
Defence Forces Ireland	22	11	2	18%
Department of Children and Youth Affairs	3	4	1	25%
Department of Culture, Heritage & the Gaeltacht	19	11	6	55%
Department of Education and Skills	15	3		0%
Department of Employment Affairs and Social Protection	4	11	2	18%
Department of Foreign Affairs and Trade/An Roinn Gnóthaí Eachtracha agus Trádála	9	6	4	67%
Department of Jobs, Enterprise and Innovation	14	11	1	9%
Department of Public Expenditure and Reform		3		0%
Department of Transport, Tourism & Sport	10	3		0%
Design Pro Ltd.	4	3		0%
Dublin Bus / Bus Atha Cliath	13	6	1	17%
Dublin City Council	43	36	5	14%
Dublin City University (DCU)	5	4		0%
Dublin Institute of Technology	10	5		0%
Dublin Port Company	1	6		0%
Dun Laoghaire Rathdown County Council	4	3	1	33%
Education Procurement Service (EPS)	60	54	12	22%
EirGrid plc	13	14		0%
Electricity Supply Board (ESB)	50	13	2	15%
Environmental Protection Agency	6	4	1	25%

Ervia	31	5	1	20%
Fáilte Ireland-National Tourism Development Authority	13	8		0%
Fingal County Council	18	4	1	25%
Food Safety Authority of Ireland	4	5		0%
Galway County Council	11	5	1	20%
Galway Mayo Institute of Technology	3	6		0%
Health Service Executive (HSE)	89	51	3	6%
Horse Racing Ireland (HRI)	13	5		0%
Houses of the Oireachtas Service	10	6	1	17%
Iarnród Éireann-Irish Rail	63	35	5	14%
IDA Ireland	13	3		0%
Irish Aviation Authority	6	7	2	29%
Irish Blood Transfusion Service	9	6	4	67%
Irish Naval Service	5	7	3	43%
Irish Prison Service	11	3		0%
Kerry County Council		10	1	10%
Kilkenny County Council	4	4	1	25%
Limerick City and County Council	11	6		0%
Louth and Meath Education & Training Board (LMETB)	2	3		0%
Louth County Council	12	4	2	50%
Marine Institute	8	8	3	38%
Maynooth University	10	3		0%
Meath County Council	5	3	1	33%
Monaghan County Council	9	4		0%
National Paediatric Hospital Development Board		3	2	67%
National Standards Authority of Ireland (NSAI)	2	4	1	25%
National Transport Authority	21	14	2	14%
National Treasury Management Agency (NTMA)	12	6		0%
National University of Ireland, Galway (NUI Galway)	20	12	1	8%
Office of Public Works (OPW)	31	11	1	9%
Office of the Revenue Commissioners	3	5	1	20%
Raidió Teilifís Éireann (RTÉ)	11	8		0%
Road Safety Authority (RSA)	7	6	1	17%
Roscommon County Council	9	6	2	33%
Shannon Group plc		4		0%
South Dublin County Council	27	13		0%
St James's Hospital	26	7	1	14%
Sustainable Energy Authority of Ireland	14	8		0%
The Adelaide & Meath Hospital, Dublin Incorporating The National Children's Hospital (AMNCH)	9	3		0%
The Health Research Board	2	3	1	33%
The Office of Government Procurement	95	91	3	3%

Transport Infrastructure Ireland (TII)	12	5		0%
Trinity College Dublin, the University of Dublin	12	7		0%
University College Cork (UCC)	16	14	1	7%
University College Dublin (UCD)	20	9	1	11%
University of Limerick	10	5	1	20%

Below gathers the contracting authorities from the above list and places them with the percentage range.

% Range	Figures
0% - 10%	41
10% - 20%	19
20% - 30%	8
30% - 40%	5
40% - 50%	2
50% - 60%	1
60% - 70%	5
70% - 80%	0
80% - 90%	0
90% - 100%	0
	81

Section IV

Section IV.3 - quantitative

Below is the amount of competitions that were awarded in 2017 with at least 1 SME and the total estimated value of those competitions.

No of Contracts with SME's	Total Estimated Value
933	€6,813,178,565

Section V

1- Green Procurement.

Currently we don't have the ability to determine whether procurement competitions are run with "Green" Procurement in mind.

2- Socially responsible public procurement ('SRPP')

Currently we don't have the ability to determine the SRPP with procurement competitions.

3- Public procurement of innovation

Currently we don't have to ability to look at the innovations within the procurement competitions.

Section VI

The TED database for 2017 may be used for OJEU competitions but national competitions are not available outside of the Irish Office of Government Procurement. The URL to the TED data files can be found at: <https://data.europa.eu/euodp/de/data/dataset/ted-csv>