

Nordic Institute for  
Interoperability  
Solutions



# X-Road as an Interoperability Component in European eDelivery

VILLE SIRVIÖ, PETTERI KIVIMÄKI

BRUSSELS, 3 APRIL 2019





NIIS as the X-Road  
core development  
organization





# Mission

To ensure the development and strategic management of the X-Road and other cross-border components for eGovernment infrastructure.





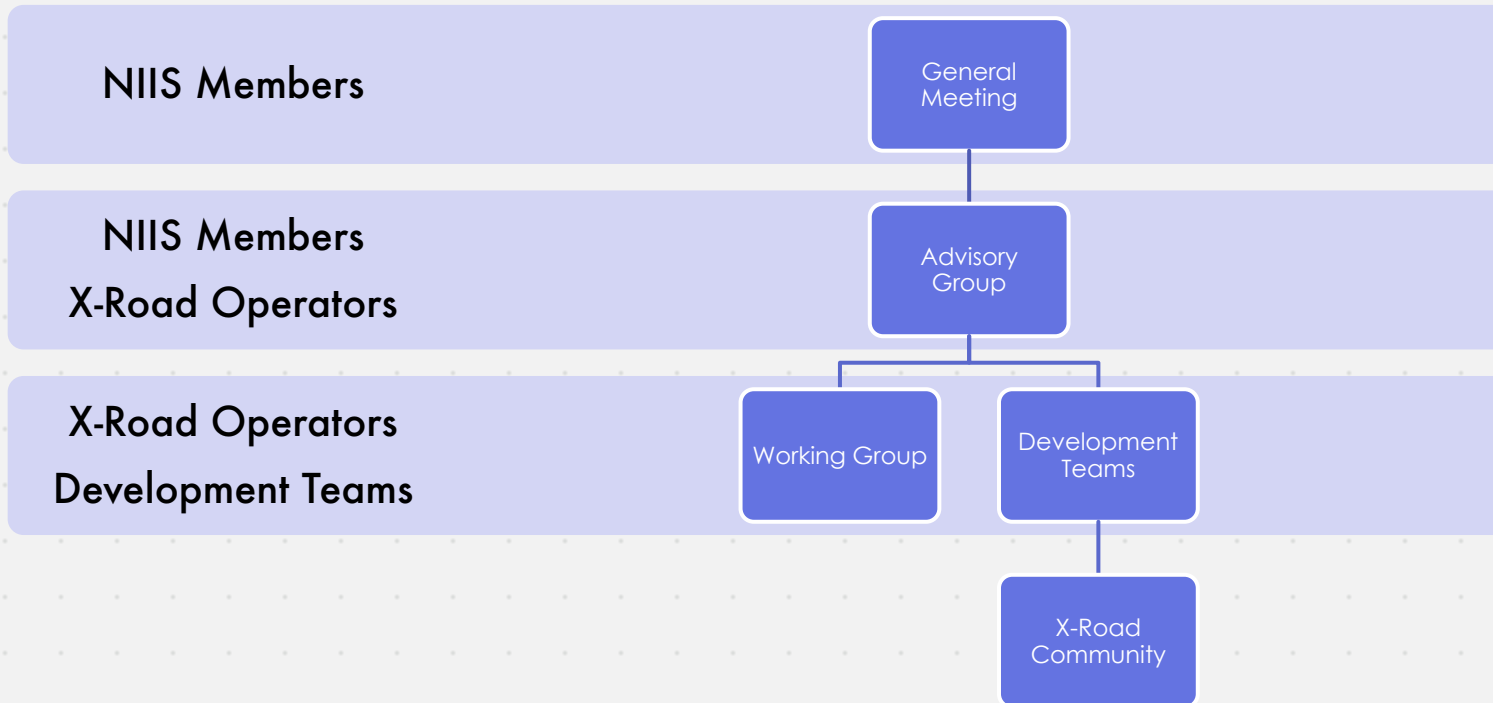
# NIIS Responsibilities

- ▶ Management, development, verification, and audit of the source code
- ▶ Administration of documentation
- ▶ Administration of business and technical requirements
- ▶ Conducting development
- ▶ Developing and implementing principles of licensing and distribution
- ▶ Providing second-line support for members
- ▶ International cooperation.





# NIIS governance model



## NIIS Members

- Ministry of Economic Affairs and Communications (Estonia)
- Ministry of Finance (Finland)

## X-Road Operators

- Information Systems Authority (Estonia)
- Population Register Centre (Finland)

## Partners

- Iceland



**MIIS**

# What is X-Road



**X-ROAD**





# X-Road Provides

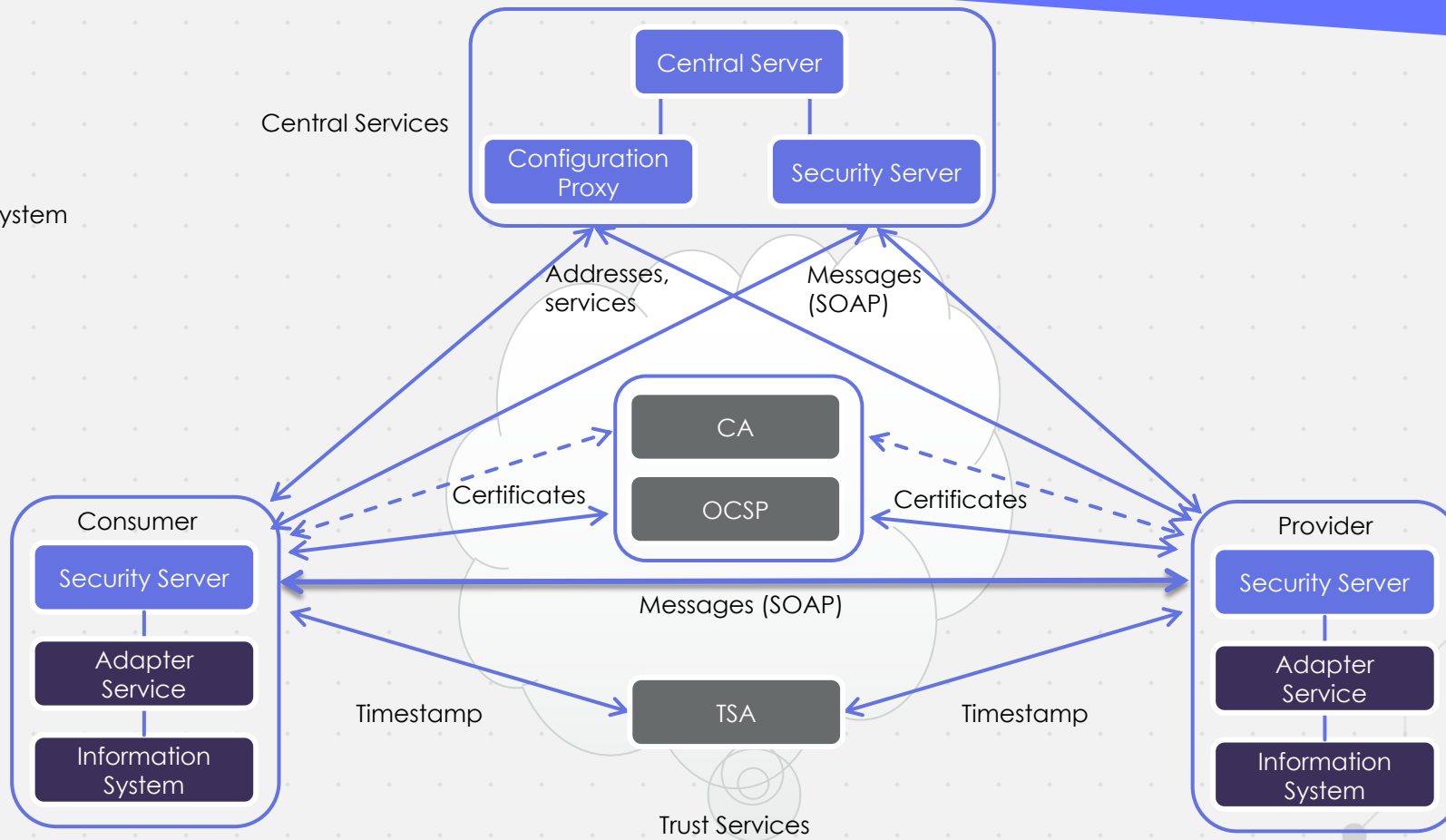
- ▶ Organization level authentication
- ▶ Machine to machine authentication
- ▶ Standardized messaging model
- ▶ Non-repudiation of messages
- ▶ Logging of messages
- ▶ Access rights management
- ▶ Address management and message routing
- ▶ Transportation level encryption.





# X-Road Architecture

- X-Road Core
- Trust Services
- Information System



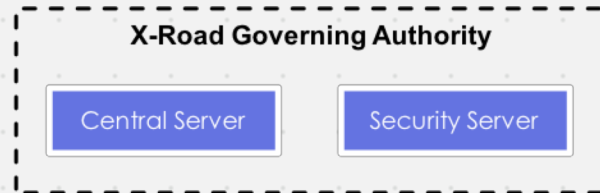




# What Is X-Road



**Trust Services** - certification and time-stamping services - are provided by **Trust Service Providers**. They may be commercial third parties, or the services can be provided and maintained by the X-Road Governing Authority as well. Trust Services are not part of the X-Road core.



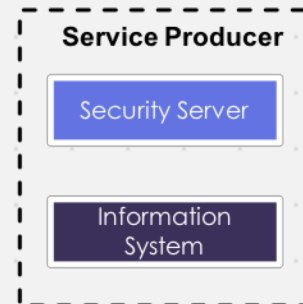
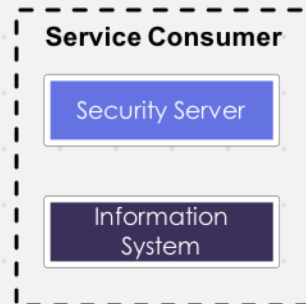
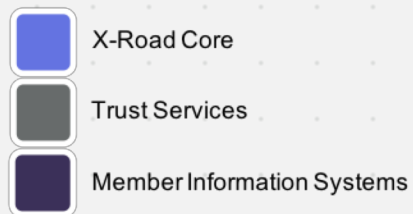
**X-Road Governing Authority** is responsible for all the aspects of the operations of an X-Road ecosystem including defining regulations and practices, accepting new Members, providing support for Members and operating the central components of the X-Road software.

## X-Road Core

- **Central Server** - Registry of X-Road member organizations and their Security Servers.
- **Security Server** - Entry point to X-Road - required for both producing and consuming services via X-Road. Mediates service calls and service responses between Information Systems.

## Member Information Systems

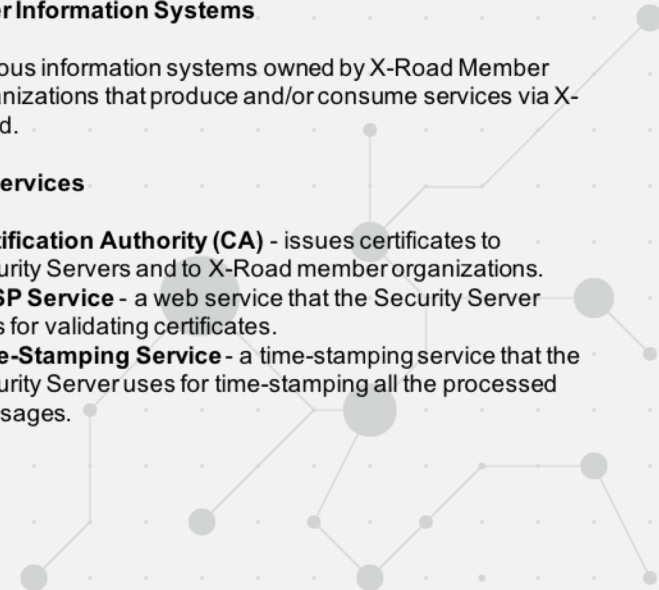
- Various information systems owned by X-Road Member organizations that produce and/or consume services via X-Road.



**Service Consumers** and **Service Producers** are **X-Road Members** - organizations that have joined the ecosystem and produce and/or consume services with other Members. A Member organization can be service provider, service consumer or both.

## Trust Services

- **Certification Authority (CA)** - issues certificates to Security Servers and to X-Road member organizations.
- **OCSP Service** - a web service that the Security Server uses for validating certificates.
- **Time-Stamping Service** - a time-stamping service that the Security Server uses for time-stamping all the processed messages.





# What Is X-Road

- ▶ A centrally managed distributed data exchange layer for information systems – an open source platform enabling a secure Internet-based data exchange between information systems.
- ▶ All kind of organizations - public and private sector enterprises and institutions - can connect their information systems to X-Road.
- ▶ X-Road employs a versatile security solution: authentication, multilevel authorization, a high-level log processing system, digitally signed and time-stamped data traffic.
- ▶ Distributed architecture and standardized messaging model make data exchange between all the members of the X-Road ecosystem significantly more efficient.





# X-Road as enabler for cross-border data exchange





# X-Road Federation

- ▶ Two X-Road ecosystems can be joined together, federated. Federation is a one to one relationship between two ecosystems.
- ▶ Members of the federated ecosystems can publish and consume services with each other as if they were members of the same ecosystem.
- ▶ It is possible to create federation connections with multiple ecosystems, but transitive federation relationships are not supported.
- ▶ Ecosystem does not have a federation relationship with another ecosystem that it's not directly federated with.

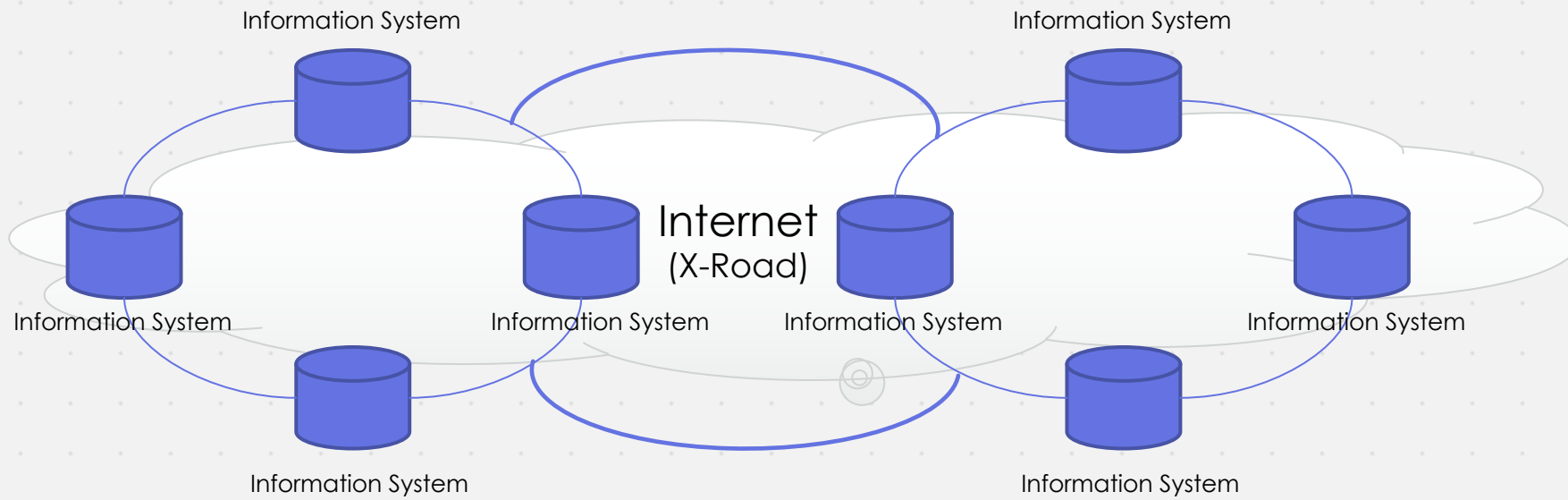




# X-Road Federation

**X-Road Ecosystem 1**

**X-Road Ecosystem 2**





# X-Road and eDelivery





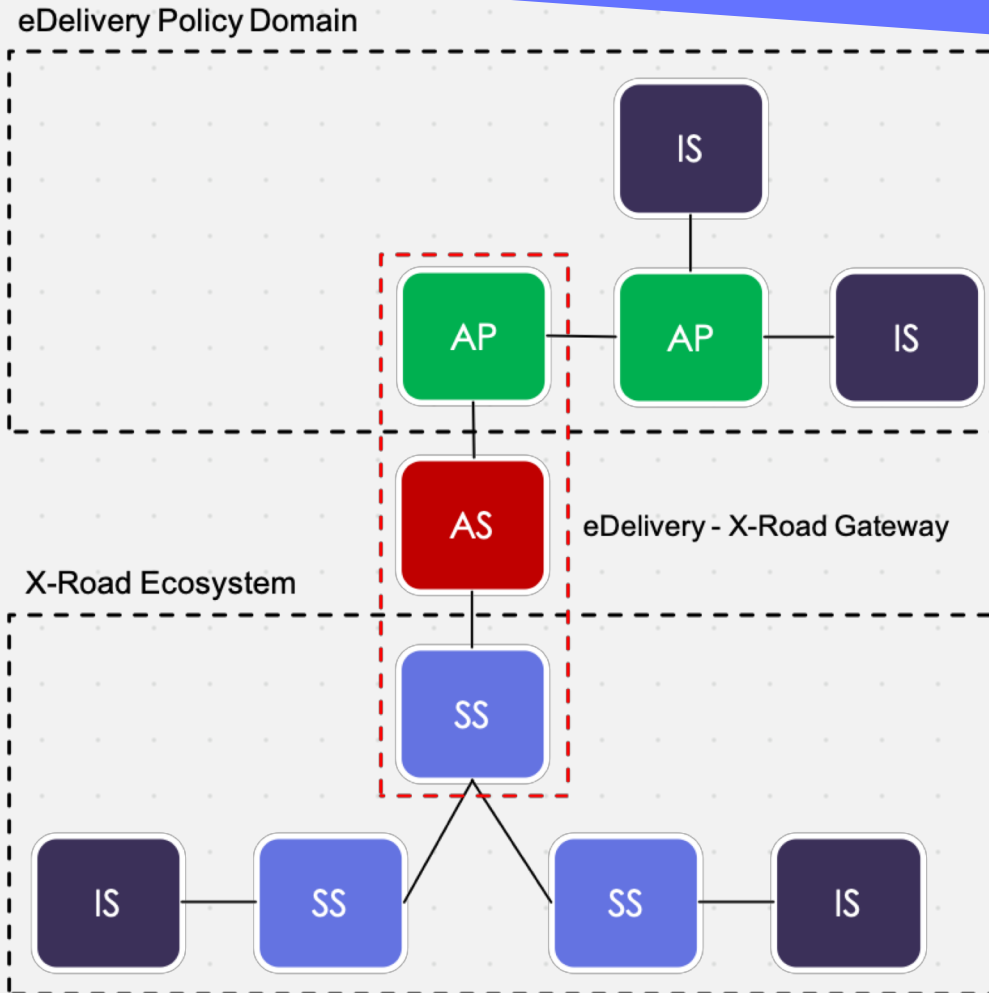
# X-Road and eDelivery

- ▶ X-Road is used nationwide in Estonia and Finland.
  - ▶ Cross-border and cross-sector data exchange.
- ▶ eDelivery is used in multiple member states.
  - ▶ Data exchange within a policy domain (e.g. finance, healthcare etc.).
- ▶ Is it possible to publish a service via one platform, and access it from both platforms?
  - ▶ TOOP in the context of publishing APIs/interfaces/services.





# eDelivery – X-Road Gateway



-  X-Road Security Server (SS)
-  eDelivery Access Point (AP)
-  Adapter Service (AS)
-  Information System (IS)







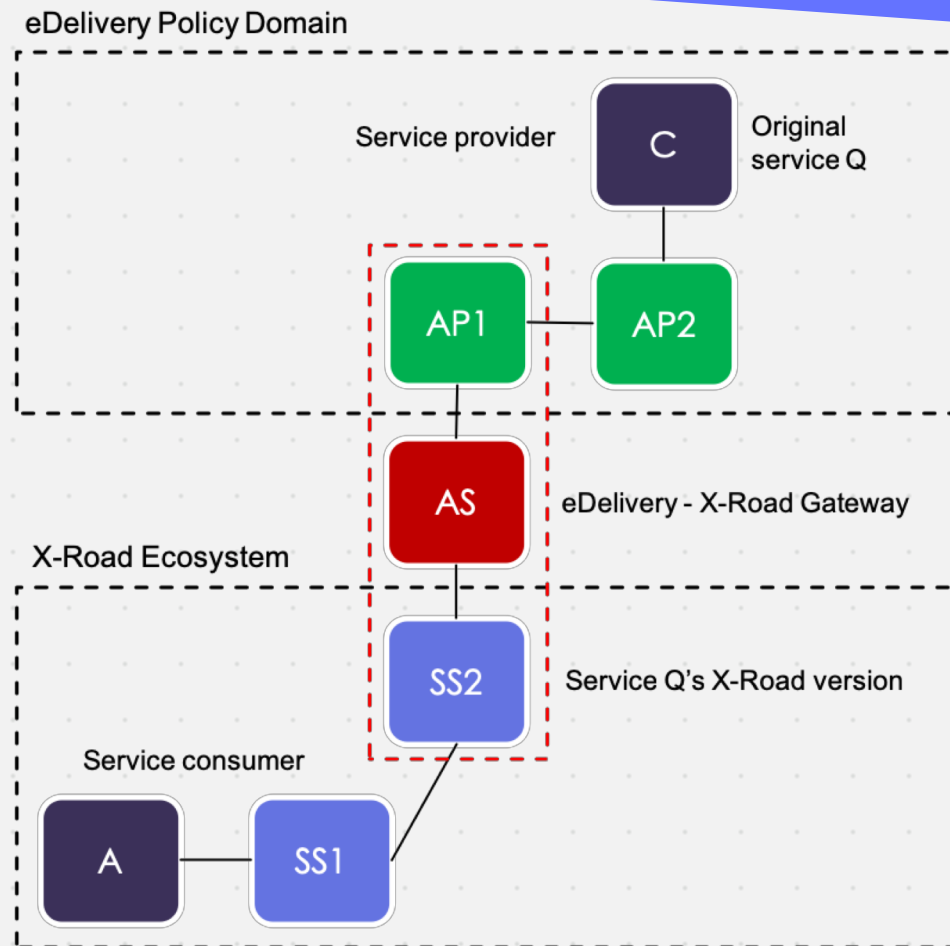
# eDelivery – X-Road Gateway

- ▶ Component that automatically converts messages from AS4 to X-Road SOAP (and vice versa).
  - ▶ Hides AS4 messages from X-Road, and X-Road SOAP from eDelivery AP.
- ▶ Enables consuming eDelivery services using X-Road Security Server, and X-Road services using eDelivery Access Point (AP).
- ▶ Maps eDelivery organization and service identifiers to X-Road organisation and service identifiers (and vice versa).





# Sample Message Flow



-  X-Road Security Server (SS)
-  eDelivery Access Point (AP)
-  Adapter Service (AS)
-  Information System (IS)





# Open Questions

- ▶ The Gateway is maintained by an operator which identity is used for:
  - ▶ Publishing eDelivery services in X-Road (and vice versa)
  - ▶ Consuming eDelivery services from X-Road (and vice versa)
- ▶ Message receiver sees the operator as a sender – message is signed by the operator, not by the original sender.
- ▶ **Access rights management and legal issues?**





# Open Questions

- ▶ eDelivery and X-Road use different identifiers for organizations and services – mapping should be automated.





Nordic Institute for  
Interoperability  
Solutions

